

Published in final edited form as:

Nat Med. 2016 February ; 22(2): 138–145. doi:10.1038/nm.4025.

Spatiotemporal neuromodulation therapies engaging muscle synergies improve motor control after spinal cord injury

Nikolaus Wenger^{1,2,3,*}, Eduardo Martin Moraud^{4,*}, Jerome Gandar^{1,*}, Pavel Musienko^{1,5,6,7,&}, Marco Capogrosso^{4,8,&}, Laetitia Baud¹, Camille G. Le Goff¹, Quentin Barraud¹, Natalia Pavlova^{1,5}, Nadia Dominici^{1,9}, Ivan R. Minev¹⁰, Leonie Asboth¹, Arthur Hirsch¹⁰, Simone Duis¹, Julie Kreider¹, Andrea Mortera⁴, Oliver Haverbeck¹¹, Silvio Kraus¹¹, Felix Schmitz¹², Jack DiGiovanna⁴, Rubia van den Brand¹, Jocelyne Bloch¹³, Peter Detemple¹², Stéphanie P. Lacour¹⁰, Erwan Bézard^{14,15,16}, Silvestro Micera^{4,8}, and Grégoire Courtine^{1,13}

¹International Paraplegic Foundation Chair in Spinal Cord Repair, Center for Neuroprosthetics and Brain Mind Institute, School of Life Sciences, Swiss Federal Institute of Technology (EPFL), Lausanne, Switzerland ²Department of Neurology with Experimental Neurology, Charité–Universitätsmedizin Berlin, Berlin, Germany ³Center for Stroke Research Berlin, Charité–Universitätsmedizin Berlin, Berlin, Germany ⁴Bertarelli Foundation Chair in Translational Neuroengineering, Center for Neuroprosthetics and Institute of Bioengineering, School of Bioengineering, EPFL, Lausanne, Switzerland ⁵Motor Physiology Laboratory, Pavlov Institute of Physiology, St. Petersburg, Russia ⁶Laboratory of Neuroprosthetics, Institute of Translational Biomedicine, St Petersburg State University, St Petersburg, Russia ⁷Lab of Neurophysiology and Experimental Neurorehabilitation, Children's Surgery and Orthopedic Clinic, Department of Non-pulmonary Tuberculosis, Institute of Phthysiopulmonology, St. Petersburg, Russia ⁸The BioRobotics Institute, Scuola Superiore Sant'Anna, Pisa, Italy ⁹MOVE Research Institute Amsterdam, Faculty of Behavioural and Movement Sciences, VU University Amsterdam, Amsterdam, The Netherlands ¹⁰Bertarelli Foundation Chair in Neuroprosthetic Technology, Center for Neuroprosthetics and Institute of Bioengineering, EPFL, Lausanne, Switzerland ¹¹Micromotive GmbH, Mainz, Germany ¹²Fraunhofer Fraunhofer Institute for Chemical Technology

Users may view, print, copy, and download text and data-mine the content in such documents, for the purposes of academic research, subject always to the full Conditions of use:http://www.nature.com/authors/editorial_policies/license.html#terms

CONTACT Correspondence to G.C. (gregoire.courtine@epfl.ch).
* & equal contributions

Author Contribution

N.W., P.M., J.B., N.P., and G.C. developed and performed the surgeries. N.W., E.M.M., J.G., P.M., J.D., L.B., S.D., M.C., L.A., and G.C. performed in vivo experiments. N.W., E.M.M., J.G., C.G.L., L.A., N.D., and G.C. analyzed functional data. N.W., E.M.M. and J.G. conducted the statistical analysis. S.P.L., P.D., I.R.M., A.H., P.M., O.H., S.K. and F.S. developed the implant technology. M.C., A.M., and S.M. conducted computational simulations. J.K., Q.B. and N.P. conducted anatomical evaluations. N.W., E.M.M., P.M., M.C., J. dG., S.M., E.B. and G.C. conceived experiments. R.B., E.B., J.B., Q.L., L.B., and S.D. were responsible for the animal models. N.W., E.M.M., L.A., J.G., C.G.L., and G.C. prepared the figures with the help of the other authors. G.C. wrote the manuscript and all the authors contributed to its editing. G.C. supervised and coordinated all the aspects of the work.

Competing Financial Interest

G.C., N.W., P.M., M.C., A.L., J.V., M.C., I.M., E.M.M., S.M. and S.L. hold various patents on electrode implant designs (WO2011/157714), chemical neuromodulation therapies (WO2015/000800), spatiotemporal neuromodulation algorithms (WO2015/063127), and robot-assisted rehabilitation enabled by neuromodulation therapies (WO2013/179230). G.C., S.L., S.M. and J.B. are founders and shareholders of G–Therapeutics SA; a company developing neuroprosthetic systems in direct relationships with the present work.

– Mainz Institute for Microtechnology (ICT–IMM), Mainz, Germany ¹³Centre Hospitalier Universitaire Vaudois (CHUV), Lausanne, Switzerland ¹⁴Motac Neuroscience Inc., Beijing, China ¹⁵University of Bordeaux, Institut des Maladies Neurodégénératives, Bordeaux, France ¹⁶CNRS, Institut des Maladies Neurodégénératives, Bordeaux, France

Abstract

Electrical neuromodulation of lumbar segments improves motor control after spinal cord injury in animal models and humans. However, the physiological principles underlying the effect of this intervention remain poorly understood, which has limited this therapeutic approach to continuous stimulation applied to restricted spinal cord locations. Here, we developed novel stimulation protocols that reproduce the natural dynamics of motoneuron activation during locomotion. For this, we computed the spatiotemporal activation pattern of muscle synergies during locomotion in healthy rats. Computer simulations identified optimal electrode locations to target each synergy through the recruitment of proprioceptive feedback circuits. This framework steered the design of spatially selective spinal implants and real–time control software that modulate extensor versus flexor synergies with precise temporal resolution. Spatiotemporal neuromodulation therapies improved gait quality, weight–bearing capacities, endurance and skilled locomotion in multiple rodent models of spinal cord injury. These new concepts are directly translatable to strategies to improve motor control in humans.

Spinal cord injury (SCI) disrupts the communication between supraspinal centers and spinal circuits, which leads to a range of motor disabilities. Neuromodulation strategies provide access to surviving circuits and pathways to alleviate these deficits^{1,2}. In particular, electrical and chemical neuromodulation of the lumbar spinal cord has mediated significant improvement of lower–limb motor control in animal models^{3–7} and humans^{6,8–11} with SCI.

Computer simulations^{12–14} and experimental studies^{7,15–17} have provided evidence that electrical neuromodulation applied to the dorsal aspect of lumbar segments primarily engages proprioceptive feedback circuits. The prevailing view is that the recruitment of these neural pathways activates central–pattern generating networks^{9,18} and raises the excitability of spinal circuits to a level that enables sensory information to become a source of motor control¹⁹. This framework enacted two fundamental limitations in the clinical application of electrical neuromodulation therapies. First, the spatial location of stimulation remains confined to single spinal cord regions that are selected based on empirical mapping experiments^{9,20}. Second, the temporal structure of stimulation protocols is restricted to non–modulated patterns that remain constant during motor execution, regardless of the current state of lower–limb movements^{8,9,15}.

The production of lower–limb movements involves the activation of spatially distributed motoneurons^{21,22} following precise temporal sequences^{23,24} that are continuously adjusted through sensory feedback²⁵. Current stimulation protocols do not attempt to reproduce these spatiotemporal patterns of motoneuron activation to facilitate movement. Here, we hypothesized that electrical neuromodulation therapies integrating spatial

selectivity and temporal structure matching the natural dynamics of motoneuron activation will improve stimulation efficacy, enhancing the quality and vigor of lower-limb movements after SCI.

In order to address this hypothesis, we first conducted anatomical and functional experiments to visualize the spatiotemporal pattern of hindlimb motoneuron activation in healthy rats. We found that walking involves the alternating activation of spatially restricted hotspots underlying extensor versus flexor muscle synergies. We then developed neuromodulation strategies that specifically target proprioceptive feedback circuits in the dorsal roots in order to access these hotspots. Computer simulations determined the optimal electrode locations to recruit specific subsets of dorsal roots. These results steered the design of spatially selective spinal implants and real-time control software to modulate extensor versus flexor muscle synergies with precise temporal resolution adjusted through movement feedback. Spatiotemporal neuromodulation therapies reinforced extension versus flexion components for each hindlimb independently, which improved a range of important gait features after complete SCI. This conceptually new stimulation strategy improved dynamic balance and skilled descending control during quadrupedal locomotion in rats with clinically relevant SCI.

Results

Dynamics of hindlimb motoneuron activation during gait

We first injected pairs of antagonist muscles spanning each hindlimb joint with Fluorogold in order to visualize the spatial location of hindlimb motoneurons. To combine tracings from multiple rats, we elaborated a 3D digital model of lumbar segments using retrogradely-labeled tibialis anterior motoneurons as a landmark (Fig. 1a). As expected, motoneurons were segregated into well-defined columns of motor pools innervating a single muscle. Each column occupied a reproducible spatial location that created a rostrocaudal gradient of flexor and extensor motoneurons innervating proximal to distal hindlimb muscles (Supplementary Fig. 1a).

We then implanted bipolar electrodes into hindlimb muscles of seven intact rats to record the electromyographic activity of all traced muscles simultaneously during locomotion (Fig. 1b). The muscle activity was projected onto motoneuron locations to visualize the spatiotemporal maps of motoneuron activation (Fig. 1c), which were consistent across the rats (Supplementary Fig. 2a). These maps revealed that locomotion involves a burst of motoneuron activity in L4–L6 segments during stance and a burst of motoneuron activity mostly centered around L2–L4 segments during swing. Gaussian clustering analysis identified these two spatial locations mathematically ($P < 0.01$), which we termed hotspots (Fig. 1c).

To identify the functionality and temporal structure underlying the activation of these hotspots, we decomposed muscle activity in functional modules termed muscle synergies^{24,26} using non-negative matrix factorization²⁷. Four temporal activation profiles coalescing weighted combinations of the recorded muscle activity were sufficient to reconstruct more than 92 % of the variance in the original signals (92.0 ± 1.1 , Fig. 1d). To

link muscle synergies to the activation of hotspots, we extracted the spatiotemporal map of motoneuron activation for each synergy independently (Fig. 1e). This analysis revealed that the first and fourth synergies produced hindlimb extension and enabled resisting gravity through the activation of the first hotspot, which we termed extensor hotspot. These synergies were activated during stance and prior to foot strike. The third synergy promoted hindlimb flexion during swing through the activation of the second hotspot, which we termed flexor hotspot. The second synergy emerged during the stance to swing transition, and involved the simultaneous recruitment of both hotspots. These experiments thus uncovered the function and temporal structure underlying the successive activation of spatially restricted extensor and flexor hotspots during locomotion (Fig. 1f). The spatiotemporal trajectory of the hindlimb endpoint accurately captured this pattern (Fig. 1g).

Electrode position to target extensor vs. flexor hotspots

Epidural electrical stimulation of lumbar segments primarily recruits large-diameter proprioceptive fibers in the dorsal roots^{7,12,29,30}. We thus hypothesized that electrodes targeting specific subsets of dorsal roots may provide access to spatially restricted spinal segments associated with extensor versus flexor hotspots.

We reconstructed the 3D location of dorsal roots innervating each lumbar segment (Supplementary Fig. 1b–c), and integrated this anatomical data into an experimentally validated computational model of epidural electrical stimulation¹². We then performed computer simulations using an optimization function that searched optimal electrode locations to recruit the dorsal roots projecting to spinal segments containing extensor versus flexor hotspots on each side of the spinal cord (Supplementary Fig. 3). Simulations revealed that electrodes located 1.00 mm laterally at the border between L2 and L3 segments, and 0.75 mm laterally at the S1 segment preferentially recruited the dorsal roots projecting to flexor versus extensor hotspots, respectively (Fig. 2a–b).

To verify these predictions, we delivered stimulation at the identified electrode locations during acute experiments. Simultaneous electromyographic recordings of mono- and poly-synaptic motor responses in hindlimb muscles enabled the reconstruction of spinal segment activation for each site of stimulation (Fig. 1). These experiments confirmed the ability to target the spatially restricted hotspots unilaterally using electrode locations identified with computer simulations (Fig. 2c–d).

Hardware: spatially selective spinal implants

We exploited microfabrication techniques to design spinal implants integrating the electrode configuration identified with computer simulations (Supplementary Fig. 4a). The topologies and dimensions of the implants were tailored to the anatomy of the spinal cord and vertebrae structures (Supplementary Fig. 1c).

We developed dedicated surgical procedures, including a tailored fixation structure, for locating and stabilizing the spinal implants overlying the targeted epidural spinal cord regions (Fig. 2e and Supplementary Fig. 4d). Repeated impedance and electrophysiological evaluations over 6 weeks (Supplementary Fig. 5a–b), and the absence of inflammatory

responses after explantation (Supplementary Fig. 5c–e) revealed the long-term functionality and bio-integration of the spinal implants.

Delivery of short bursts (4 pulses at 40 Hz) of electrical stimulation through the spinal implants elicited the predicted unilateral movements of extension versus flexion during suspended conditions in six intact rats (Fig. 2f and Supplementary Video 1).

Software: parameters adjusted through movement feedback

We next exploited an advanced real-time control platform⁷ to implement spatiotemporal neuromodulation therapies. We elaborated signal-processing algorithms that detected the timing of gait events based on real-time tracking of bilateral hindlimb kinematics (Fig. 3). The continuous temporal sequence of gait events was derived from the angular displacements of the hindlimb endpoint (foot) around its center of rotation (Fig. 3). This progression of the foot in space resembles a clock that encodes the current timing of gait (Fig. 1g).

A finite-state machine logic triggered the activation of each individual electrode when the hindlimb endpoint trajectory crossed user-defined angular thresholds (Fig. 3 and Supplementary Video 2). Adjustments in amplitude or frequency could be tuned based on control policies⁷ (Fig. 3). The time necessary to trigger stimulation based on movement feedback remained below 20 ms, which is 40 times faster than the average gait cycle duration in rats (800 ± 146 ms). Stimulation was triggered with 97.8 % accuracy for a temporal window constrained within less than 5 % of the relative gait cycle duration ($n = 140$ gait cycles).

This computational infrastructure provides the technological framework for real-time adjustment of neuromodulation parameters over multiple electrodes based on high-fidelity kinematic feedback.

Spatiotemporal neuromodulation after complete SCI

We next exploited the developed hardware and software to test whether spatiotemporal neuromodulation therapies mediated superior gait improvements than continuous stimulation protocols. Adult rats received a complete transection of the T7 segment (Fig. 4a). The tailored spinal implant was inserted in the same surgery. Five weeks post-lesion, all rats exhibited complete hindlimb paralysis when positioned bipedally in a robotic bodyweight support system⁴ (Fig. 4b). Ten minutes prior to testing, we administered a serotonergic replacement therapy^{4,5} that compensates for the interrupted source of monoaminergic modulation after injury. Continuous electrical neuromodulation delivered over the midline of L2–L3 and S1 segments enabled all the tested rats to perform coordinated locomotion in response to treadmill motion, as previously reported⁴ (Fig. 4b). However, the spatiotemporal map of motoneuron activation differed from those observed in intact rats (Fig. 4b), which translated into reduced vertical ground reaction forces ($P < 0.01$; Fig. 4b) and less extensive foot movement during swing ($P < 0.01$; Fig. 4b) in injured compared to intact rats.

To optimize the temporal structure of spatiotemporal neuromodulation therapies, we evaluated the impact of varying the onset or end of stimulation through the spatially

selective lateral electrodes of the implant. Adjustment of the activation timing for the electrode targeting the flexion hotspot led to a gradual tuning of flexion related variables such as flexor muscle activity, step height, and foot acceleration during swing (Supplementary Fig. 6). The same modulation was detected for extensor related variables such as extensor muscle activity and vertical ground reaction force when varying the activation timing of the electrode targeting the extensor hotspot (Supplementary Fig. 6). The concurrent activation of flexor and extensor hotspots at the end of stance was also critical to prevent foot dragging (Supplementary Fig. 6). For each electrode, we selected the timing that yielded optimal values for this ensemble of gait parameters. The resulting temporal structure matched the temporal activation profiles of muscle synergies exposed in intact rats (Supplementary Fig. 6c).

We tested whether this optimized stimulation protocol was capable of reproducing the spatiotemporal maps of motoneuron activation underlying locomotion of intact rats. In all tested rats, spatiotemporal neuromodulation therapies reinforced the amplitude of electromyographic signals and improved the activation timing in nearly all recorded hindlimb muscles (Supplementary Fig. 7). This robust modulation led to spatiotemporal maps of hindlimb motoneuron activation that resembled those observed in intact rats (Fig. 4b, Supplementary Fig. 2 and Supplementary Video 2).

Finally, we evaluated whether spatiotemporal neuromodulation improved locomotion compared to continuous neuromodulation. To quantify gait performance, we computed numerous parameters from kinematic, kinetic and muscle activity recordings ($n = 137$, Supplementary Table 1). To weight their relative importance objectively, we subjected the parameters to a principal component (PC) analysis^{4,5}. We visualized gait patterns in the new space created by PC1–2, where PC1 explained the highest amount of variance (27 %) and reflected the degree of similarity to intact rats (Fig. 4c). Analysis of scores on PC1 revealed that spatiotemporal neuromodulation promoted gait patterns closer to those of intact rats compared to continuous neuromodulation ($P < 0.05$; Supplementary Fig. 8). We extracted parameters that highly correlated ($|\text{value}| > 0.5$, factor loadings) with PC1, and regrouped them into functional clusters corresponding to basic movement features. This analysis revealed that spatiotemporal neuromodulation normalized many key features of hindlimb movements (41 of 137 significantly improved parameters, $P < 0.05$, Supplementary Fig. 8). Continuous stimulation delivered through the 4 spatially selective lateral electrodes failed to improve gait performance ($p < 0.05$; Fig. 4c and Supplementary Fig. 8), confirming the synergy between spatial selectivity and temporal structure.

Gradual adjustment of extension vs. flexion movements

We previously showed that modulation of stimulation amplitude and frequency led to gradual adjustments of hindlimb movements⁷. We asked whether this modulation could be superimposed onto spatiotemporal neuromodulation therapies in injured rats. We first varied the amplitude of stimulation delivered through one of the spatially selective lateral electrodes. A progressive increase of stimulation amplitude for the electrode targeting extension versus flexion hotspots promoted a selective and gradual augmentation of extensor versus flexor muscle activity on the stimulation side in all tested rats ($n = 5$, $P < 0.05$; Fig.

5a). This tuning translated into an incremental enhancement of extension versus flexion components (Fig. 5b), which supported the control of hindlimb extension during stance and foot trajectories during swing over ranges that reached the anatomical limits of motion (Supplementary Video 2). In contrast, increases in stimulation amplitude blocked hindlimb movements when stimulation was delivered without temporal structure (Supplementary Video 2). Muscle activity resulted from a succession of motor responses elicited after each pulse of stimulation (Supplementary Fig. 9), which likely originated from the recruitment of proprioceptive feedback circuits^{7,12,29,30}. Increase in stimulation amplitude led to commensurate augmentation of the amplitude of these responses (Supplementary Fig. 9)

We then verified that the previously observed modulation of step height with adjustment of stimulation frequency⁷ was preserved during spatiotemporal neuromodulation (Fig. 5c). In all rats, adjustment of stimulation frequency led to a gradual increase in both extension and flexion components, which mediated a linear tuning of gait features such as foot height (Fig. 5d). These relationships support control over complex foot trajectories during locomotion⁷, and can thus be combined with spatiotemporal neuromodulation.

Spatiotemporal neuromodulation after clinically relevant SCI

We finally evaluated the potential of spatiotemporal neuromodulation therapies to improve locomotion after clinically relevant SCI. Spinal cord damage in humans primarily results from contusions. To model such lesions, we delivered a robotically controlled impact onto thoracic segments (21.8 ± 1.7 % sparing, Fig. 6a and Supplementary Fig. 10). Early after injury, all rats dragged both hindlimbs along the treadmill belt (Fig. 6b). Administration of the serotonergic replacement therapy failed to promote movement at this stage. The addition of continuous electrical neuromodulation instantly enabled locomotion. However, hindlimb movements extinguished after a few minutes since the rats were no longer able to support their bodyweight. Spatiotemporal neuromodulation instantly reestablished locomotion, enabling robust and powerful movements of both hindlimbs (Fig. 6b and Supplementary Video 3).

To quantify this improved performance, we measured weight-bearing capacities and endurance during continuous versus spatiotemporal neuromodulation. To determine weight-bearing capacities, we progressively decreased the amount of vertical robotic assistance by 5 % increments until the rats failed to perform ten consecutive steps. Spatiotemporal neuromodulation mediated 25 to 60 % augmentation of weight bearing capacities ($P < 0.05$, Fig. 6c), which correlated with substantial increase in vertical peak forces ($P < 0.05$, Fig. 6c) and extensor muscle activity ($P < 0.01$, Fig. 6c). To evaluate endurance, we provided optimal bodyweight support, and measured the time until the rats collapsed. Spatiotemporal neuromodulation extended the duration of locomotion from 40 to 270 % ($P < 0.01$, Fig. 6d), maintaining step heights towards intact values during most of the testing (Fig. 6d).

In the chronic stage (8 weeks), the rats exhibited limited recovery of hindlimb motor control. When tested quadrupedally on a runway, gait performance ranged from limited movement of hindlimb joints to occasional plantar placements (Supplementary Fig. 11). During spatiotemporal neuromodulation, the rats were capable of executing full weight bearing plantar steps ($P < 0.01$, Supplementary Fig. 11 and Supplementary Video 3). Spatiotemporal

neuromodulation significantly improved trunk dynamics and thus the maintenance of balance during quadrupedal locomotion ($P < 0.01$, Fig. 6e).

We then tested the rats during staircase climbing, a task requiring precise voluntary foot placement over consecutive steps to resist gravity and avoid tumbling against the stairs. Spontaneously, rats essentially tumbled against or hit the staircase. Spatiotemporal neuromodulation allowed both hindlimbs to pass the steps successfully without contact with the staircase in a substantial number of trials ($P < 0.01$, Fig. 6f and Supplementary Video 3).

Discussion

Therapeutic outcomes in animal models^{4,5,7,31,32} and paraplegic patients^{8,9,11,15} have accelerated the deployment of clinical studies to evaluate the potential of epidural electrical stimulation for improving recovery after SCI³³. In the absence of a conceptual framework, however, stimulation protocols have remained unspecific, restricted to single regions, and delivered continuously. Here, we have introduced spatiotemporal neuromodulation therapies that are derived from biological principles. This conceptually new stimulation strategy reestablished lower-limb motor control when conventional protocols failed to facilitate movement. We expect that this approach will support the design of evidence-based neuromodulation therapies that improve motor control and gait rehabilitation in humans.

Various studies proposed that the motor command underlying the production of limb movement originates from a small set of motor primitives termed muscle synergies^{18,24,34,35}. These motor primitives help coping with the redundant degrees of freedom at muscles and joints³⁵, and are thus considered the building blocks for motor control^{24,34–36}. Previous work suggested that a control architecture based on muscle synergies would simplify the manipulation of natural limb dynamics in robotics²⁶ and neuroprosthetics³⁷. We followed this approach to design evidence-based neuromodulation therapies. As observed in humans³⁷, we found that rodent locomotion involves the sequential activation of spatially restricted hotspots associated with extensor versus flexor muscle synergies. These hotspots reflect the final motor command²¹, which is elaborated by neuronal circuits located in the same regions^{38–40}. These cells integrate supraspinal information and feedback signals to produce precisely timed muscle contractions^{41–43}. Evidence suggested that these cellular nodes encode muscle synergies promoting extension versus flexion movements of the lower-limbs^{38,39}. These muscle synergy encoders receive dense synaptic contacts from proprioceptive afferents^{39,40}. Indeed, the proprioceptive regulation of neuronally encoded motor primitives⁴⁴ can predict the formation of lower-limb trajectory in the frog⁴⁵.

Epidural electrical stimulation leads to motor pattern formation through the recruitment of proprioceptive feedback circuits, both in rats^{7,12,16,29} and humans^{15,46}. We reasoned that spinal implants tailored to activate the proprioceptive afferents projecting to the identified hotspots would engage muscle synergy encoders related to extension versus flexion. By analogy, the recruitment of auditory afferent pathways related to specific tones has guided the development of cochlear implants to restore hearing⁴⁷. Tailored spinal implants with electrodes targeting specific subsets of dorsal roots enabled a gradual control over the degree

of flexion versus extension movements on the left and right hindlimbs. This hypothesis-driven neuromodulation therapy only required a few electrodes that were optimally located based on neuroanatomical reconstructions and computer simulations. In turn, the limited number of electrodes reduced technological challenges, allowing the development of highly reliable spinal implants that displayed long-term functionality and remarkable bio-integration.

This conceptual framework also simplified the architecture of the real-time control software. We found that the temporal activation profiles of muscle synergies were captured in the spatiotemporal trajectory of the foot, as previously reported during human walking²³. Thus, a single parameter provided a simplified and reliable feedback signal to trigger simultaneous adjustments of neuromodulation parameters across multiple electrode configurations with high fidelity.

These new concepts and technologies will support the development of more refined control policies. For example, we found that the predictive modulation of step height with changes in stimulation frequency⁷ was well preserved during spatiotemporal neuromodulation. Algorithms incorporating adjustments of spatial and temporal patterns, both in amplitude and frequency, under the guidance of dynamic computational models have the potential to further improve gait performance.

Habitual bipedalism elicited a series of adaptations in the dynamics of lower-limb motoneuron activation during human walking^{24,48}. Despite these evolutionary adaptations, both muscle synergies^{24,36} and proprioceptive feedback circuits⁴⁹ appear remarkably conserved across mammals. Moreover, the neuroanatomical⁵⁰, electrophysiological^{15,17}, computational^{18,24} and modeling¹³ concepts that guided the design of our hypothesis-driven neuromodulation therapies are directly applicable to humans.

Existing wearable and implanted wireless sensors⁵¹ provide off-the-shelf solutions to monitor foot trajectory during locomotion. Neuromodulation platforms have been developed⁵² to enable integration of feedback signals for closed-loop electrical stimulation of the human nervous system. These neurotechnologies are well suited to conduct clinical evaluations on the ability of spatiotemporal neuromodulation therapies to facilitate motor control and gait rehabilitation in humans. While challenges lie ahead, we believe that spatiotemporal neuromodulation of the spinal cord will become a viable therapy to accelerate and augment functional recovery in humans with SCI.

Online Methods

Animal Models and Surgical Procedures

Animal species and animal groups—All experiments were conducted in accordance with Swiss federal legislation and under the guidelines established at EPFL. Local Swiss Veterinary Offices approved all the procedures. Experiments were performed on female Lewis rats (LEW-ORlj) with initial weight of 180–220g that were ordered from Janvier Labs in France. A total of 47 rats were used for experiments, which were distributed into different experiments to determine the spatial distribution of hindlimb motoneurons ($n = 20$

rats), experiments for reconstruction of spinal segments and dorsal roots ($n = 3$ rats), experiments for motor evoked potentials and induction of movement ($n = 6$ rats), experiments to determine the spatiotemporal map of motoneuron activation in healthy animals ($n = 7$ rats) and experiments to test the functional effects of spatiotemporal neuromodulation in rats with complete SCI ($n = 5$ rats) and contusion SCI ($n = 6$ rats).

Surgical procedures—General surgical procedures for the majority of interventions carried out have been described previously^{5,7,53}. All the interventions were performed under full general anesthesia with isoflurane in oxygen-enriched air (1–2 %). After surgery, the rats were placed in an incubator for optimized recovery from anesthesia.

Implantation of intra-muscular electrodes—To record electromyographic activity, bipolar electrodes were implanted into selected hindlimb muscles. Combinations of the following muscles were implanted depending on experiments: gluteus medius, iliopsoas, vastus lateralis, semi-tendinosus, biceps femoris, gastrocnemius medialis, gastrocnemius lateralis, tibialis anterior, extensor digitorum longus, flexor hallucis longus. Briefly, recording electrodes were fabricated by removing a small part (0.5 mm notch) of insulation from each the implanted wire (AS631, Cooner wires). A common ground wire was created by removing about 1cm of Teflon from the distal extremity of the wire, which was inserted subcutaneously over the right shoulder. All electrode wires were connected to a percutaneous amphenol connector (Omnetics Connector Corporation) cemented to the skull of the rats. The proper location of the electrodes was verified post-mortem.

Surgical insertion of spinal implants—The surgical methods to insert and stabilize the spinal implant into the epidural space are detailed in Supplementary Fig. 6. Briefly, 2 partial laminectomies were performed at vertebrae levels L3–L4 and T12–T13 to create entry and exit points for the implant. The implant was gently pulled above the dura mater using a surgical suture. Electrophysiological testing was performed intra-operatively to fine-tune positioning of electrodes. The connector of the implant was secured into a protective cage plastered using freshly mixed dental cement on top of the L3–L4 vertebra.

Spinal cord injury models—Two models of spinal cord injuries were used in the present experiments. All the main experiments were conducted in rats that received a complete transection of the mid-thoracic spinal cord, towards T8 spinal segment. Under aseptic conditions and general anesthesia, a dorsal midline skin incision was made from vertebral level T5 to L2 and the underlying muscles were removed. A partial laminectomy was performed around T8 vertebra to expose the spinal cord. The exposed spinal cord was then cut with customized tools. The complete transection lesions were verified post-mortem by confirming the absence of neural tissues throughout the dorsoventral extent of the spinal cord. The second group of rats received a spinal cord contusion. A partial laminectomy was made at the T9 vertebra to expose T7 and T8 segments. A 230 kdyn (1 dyn = 10 μ N) contusion injury was applied using a force-controlled spinal cord impactor (IH-0400 Impactor, Precision Systems and Instrumentation LLC, USA). The amount of damaged spinal tissue was evaluated using coronal sections stained with antibodies against glial fibrillary acidic protein (GFAP) (Dako Z0334, USA). The contours of the spared and

damaged spinal tissues were reconstructed in the NeuroLucida image analysis software to reconstruct the lesion in 3D.

Rehabilitation procedures after spinal cord injury—All the injured rats were trained daily for 30 min, starting 7 days post-injury. The neurorehabilitation program was conducted on a treadmill using a robotic bodyweight support system (Robomedica) that was adjusted to provide optimal assistance during bipedal stepping⁷. To enable locomotion, a serotonergic replacement therapy combining the 5HT_{2A} agonist quipazine and the 5HT_{1A-7} agonist 8-OHDPAT was administered systemically 10 min prior to training. Electrical neuromodulation was delivered throughout the training session.

Multimodal Recordings and data Analysis

Recordings of whole-body kinematics, kinetics, and muscle activity—

Procedures to record kinematics, kinetics, and muscle activity have been detailed previously⁷. Briefly, whole-body kinematics was recorded using the high-speed motion capture system Vicon (Vicon Motion Systems), combining 12 infrared cameras (200 Hz). Reflective markers were attached bilaterally overlying iliac crest, greater trochanter (hip), lateral condyle (knee), lateral malleolus (ankle) and distal end of the fifth metatarsal (limb endpoint). During quadrupedal locomotion, an additional marker was placed on the shoulders. 3D position of the markers was reconstructed offline using Vicon Nexus software. The body was modeled as an interconnected chain of rigid segments, and joint angles were generated accordingly. In addition we computed changes in the angle and length of the virtual telescopic limb linking the hip to the foot, which we termed hindlimb. Electromyographic signals (2 kHz) were amplified, filtered (10–2000 Hz bandpass), stored and analyzed off-line. Ground reaction forces in the vertical, anteroposterior and mediolateral directions were monitored using a force plate (2 kHz, HE6X6, AMTI) located in the middle of the runways, or below the treadmill belt. Concurrent video recordings (200 Hz) were obtained using two cameras (Basler Vision Technologies) oriented at 90 ° and 270 ° with respect to the direction of locomotion.

Analysis of whole-body kinematics, kinetics, and muscle activity—A minimum of 10 step cycles was typically extracted for each hindlimb in each experimental task and rat. A total of 137 parameters quantifying kinematics ($n = 118$), kinetic ($n = 6$) and muscle activity ($n = 13$) features were computed for each gait cycle using custom written Matlab scripts and according to methods described in details previously⁷. All the computed parameters are reported in Supplementary Table 1. To demonstrate the effects of experimental conditions, and extract the parameters that captured the largest amount of variance across rats or between conditions, we implemented a multi-step procedure based on principal component (PC) analysis^{5,7,54}. PC analyses were applied on all the computed parameters from all individual gait cycles for all the rats together. Gait cycles were visualized in the new synthetic PC space, and PC scores were extracted to quantify differences between groups or experimental conditions. Parameters highly correlated (factor loadings) with PCs that discriminated the experimental conditions were extracted, and regrouped into functional clusters corresponding to basic movement features, which were named for clarity.

Dynamic trunk balance—To quantify improvement of dynamic trunk movement during quadrupedal locomotion, we computed the mean of an ensemble of parameters related to the orientation of the trunk, the variability of trunk movement, and the amplitude of trunk movement. Parameters are all reported in Supplementary Table 1. For each component of trunk movement (amplitude, orientation and variability), we expressed these parameters along a dedicated axis that report the degree of similarity of these parameters to those measured in intact rats (Figure 6e).

Muscle synergy extraction—Muscle activation signals (electromyographic data) were high-pass filtered (30 Hz) with a zero lag fourth-order Butterworth filter, full-wave rectified, smoothed with a zero lag fourth-order low-pass (20 Hz) Butterworth filter, time interpolated over individual gait cycles to fit a normalized time base with 200 points, and averaged across all gait cycles performed by the individual rat. The electromyographic signal of each muscle was normalized to its peak value. We then applied a non-negative matrix factorization algorithm on these curated muscle activation signals to derive the weighting components and temporal activation profiles of muscle synergies²⁴.

Spatiotemporal map of motoneuron activation—To visualize spatiotemporal map of motoneuron activation, electromyographic signals were mapped onto the rostrocaudal distribution of the reconstructed motoneuron matrix²¹. This approach provides an interpretation of the motoneuron activation at a segmental level rather than at the individual muscle level. The maps were constructed by adding up the contributions of each muscle to the total activity at each spinal segment. The motor output pattern of each spinal segment S_i was estimated by the following equation:

$$S_i = \frac{\sum_{j=1}^{n_i} \left(\frac{MN_{ij}}{MN_j} \right) \cdot EMG_j}{\sum_{j=1}^{n_i} \left(\frac{MN_{ij}}{MN_j} \right)} \cdot N_i$$

where n_i is the number of EMG_js corresponding to the i th segment, EMG_j represents the normalized muscle activity, MN_{ij} is the number of motor neurons related to muscle j for the segment i , MN_j is the total number of motor neurons for the muscle j , N_i is the number of muscles innervated by the i th spinal segment.

Gaussian cluster algorithms—Clusters of activity were extracted from the spatiotemporal map of motoneuron activation using Gaussian Mixture Models (GMM). GMM was applied to the temporal activation profiles of motoneuron activation within each spinal segment. Four clusters maximized fitting quality according to Bayesian information criteria. This analysis highlighted two main hotspots along the rostrocaudal direction, and three main timings of activation corresponding to stance, stance-to-swing transition, and late swing.

Anatomical and Imaging Procedures

Spatial distribution of hindlimb motoneurons—Rats ($n = 20$) received injections of Fluorogold (2 % in sterile saline, 30–80 μl per muscle) into the tibialis anterior muscle, and in the same surgery, into one additional muscle on the contralateral side. The following muscles were traced: gluteus medius, iliopsoas, vastus lateralis, semi-tendinosus, biceps femoris, gastrocnemius medialis, gastrocnemius lateralis, extensor digitorum longus, and flexor hallucis longus. The location of the retrogradely traced motoneurons was reconstructed in 3D from serial spinal cord sections using Neurolucida. To merge reconstruction from several rats into a unified digital library, the tibialis anterior motor column was used as a landmark in each rat.

Micro-computed tomography—Repeated imaging of spinal implants *in vivo* was conducted using the micro-computer tomography scanner Skyscan 1076 (Bruker μCT). Scanner settings were adjusted to avoid artefacts induced by metallic parts of the vertebral orthosis (0.5–1 mm aluminum filter, voltage 70–100 kV, current 100–140 μA , exposure time 120–160 ms, rotation step 0.5 $^\circ$). The resulting projection images were reconstructed into 3D renderings using NRecon and GPURecon Server (Bruker μCT). Rats were kept under isoflurane anesthesia during the scan to reduce motion artifacts. Segmentation and 3D model were constructed with Amira® (FEI Visualization Sciences Group).

Measurement of vertebrae and spinal segments—The shape of vertebrae was measured using micro-computed tomography imaging. The spinal cords of three rats were imaged, and the entire bone structure was reconstructed in 3D. The 3D renderings were exported in the virtual reality modeling language file format WRL that was later merged with spinal tissue and dorsal root reconstructions.

Measurements of relationships between vertebra and spinal segment morphologies were performed on fresh tissue. For each subject, the spinal segments were identified based on the innervation of the dorsal roots. The center of the segment was defined as the entry point of the rootlets. After measuring the length of vertebra, and the relationships between vertebra and spinal segments, the entire spinal cord was extracted, and the roots moved perpendicular to the spinal cord to clearly visualize the segments. The location and length of each segment was then calculated.

Reconstruction of spinal segments—At the end of the experimental procedures, rats were perfused with Ringer's solution containing 100'000 IU–L heparin and 0.25 % NaNO_2 followed by 4 % phosphate buffered paraformaldehyde, pH 7.4 containing 5 % sucrose. The spinal cords were dissected, post-fixed overnight, and transferred to 30 % phosphate buffered sucrose for cryoprotection. After four days, the tissue was embedded and the entire lumbosacral spinal cord sectioned in a cryostat at a 40 μm thickness. To reconstruct spinal segment morphology in a 3D model, a Nissl staining (ThermoFisher) was performed on 25 evenly cross-sections of lumbar and sacral segments, each separated by 0.8 mm. The slides were assembled into the Neurolucida image analysis software (MBF Bioscience) to reconstruct lumbosacral segments in 3D.

Reconstruction of dorsal root trajectories—After fixation, the spinal cord was extracted from the vertebral canal. The dura mater was opened along the rostrocaudal axis, and gently moved on the side. For each spinal segment, the dorsal root ganglions were identified. The corresponding root was retracted cranially and laterally. The entire length of the root was painted, from the cut extremity to the entrance into the spinal segment. All the painted roots from S3 to L1 were repositioned in their original location along spinal segments, and the dura mater was sutured using surgical wire (Ethilon 6.0). The spinal cord was then frozen and cut into 80 μm thick slices using a cryostat (Leica Instruments). Reconstructions were conducted using every other section, corresponding to intervals of 160 μm . The slides were assembled into the Neurolucida image analysis software (MBF Bioscience) to reconstruct the color-coded dorsal roots in 3D.

Histology of explanted spinal cord with long-term implants—After 8 weeks of implantation, rats were perfused, and their spinal cords sectioned, as explained above. Astrocytic reactivity was revealed by performing immunohistological staining against glial fibrillary acidic protein (GFAP). Coronal sections of the spinal segments located below the implant were incubated overnight in serum containing anti-GFAP (1:1000, Dako Z0334, USA) antibodies. Immunoreactions were visualized with appropriate secondary antibodies labeled with Alexa fluor® 488 or 555 (Thermofisher). Sections were mounted onto microscope slides using anti-fade fluorescent mounting medium and covered with a cover glass. The tissue sections were observed and photographed with a laser confocal fluorescence microscope (Leica). Immunostaining density was measured offline using 6 representative confocal images of each lumbar segment per rat. Images were acquired using standard imaging settings that were kept constant across rats, and analyzed using custom-written Matlab scripts according to previously described methods⁵. All analyses were performed blindly.

Morphology of the entire spinal cord—All the 3D reconstructions derived from micro-computed tomography imaging and anatomical experiments were merged to generate a global model including the bony structure of vertebrae, the shape of spinal segments, and the trajectory of each dorsal root. We generated a database using the STereoLithography (.stl) file format that is supported by many software packages, and is widely used for rapid prototyping and computer-aided manufacturing. This database is available for download on our website.

Computational Model

Hybrid computational model of electrical spinal cord stimulation—We previously elaborated and validated experimentally a hybrid computational model of epidural electrical stimulation of the rat spinal cord¹². The model combines (i) finite element modeling of the entire lumbosacral spinal cord to compute the electrical fields elicited by electrical spinal cord stimulation, and (ii) anatomically and biophysically realistic neural structures to derive the type of fibers and neurons activated by the stimulation. In the present experiments, we integrated all the results from the traced hindlimb motoneurons (Supplementary Fig. 1) and updated the positioning of the dorsal roots in the model with the new 3D reconstructions.

Computer simulations and model predictions—We conducted simulations to identify the optimal electrode locations to activate interneurons and motoneurons located within extensor- and flexor-related hotspots of lumbar segments during gait. Computerized simulations, neurophysiological experiments, and pharmacological testing revealed that epidural electrical stimulation activates interneurons and motoneurons indirectly through the recruitment of proprioceptive fibers feedback circuits fibers within the dorsal roots^{7,12,29}. Therefore, we performed computerized simulations that searched optimal electrode locations to activate proprioceptive afferent fibers (A α fibers) running in the dorsal roots projecting to the targeted spinal segments. The segmental distribution of extensor- and flexor-related hotspots during gait was derived from Gaussian clustering analysis (Fig. 1, See below).

To optimize electrodes configurations, a grid of electrodes was positioned over the modeled lumbosacral segments. The grid combined five active sites per segment, resulting in a total of 30 electrodes. Active sites were located over the midline, and at 750 and 1500 μm from the midline for the more caudal segments (L4–S1), and at 1000 and 1500 μm from the midline for the more rostral segments (L2–L3) in order to conform the enlargement of lumbosacral segments. The spacing of electrodes along the mediolateral direction was selected to maximize left–right specificity¹². To evaluate the ability of each electrode to access the targeted dorsal roots, we elaborated an optimization algorithm that calculated the cost to achieve specificity based on four factors: (i) stimulation specificity for the targeted segments; (ii) ipsilateral vs. contralateral specificity; (iii) minimum threshold; and (iv) specificity of the neighboring sites. The later term was important to ensure robustness in case of electrode misplacement, inter–individual variability, and post–implantation migration. For each active site, stimulations were delivered at increasing amplitudes ranging from 50 to 600 μA . The resulting recruitment of Ia–alpha fibers was evaluated for each segment at each current level. The total number of implemented simulations reached 112'500, which required approximately eight days of computer time (Supplementary Fig. 4).

Acute Electrophysiological Experiments

Motor evoked potentials to validate model predictions—Adult rats were anesthetized with urethane (1 g/kg, i.p., Sigma Aldrich). Bipolar electrodes were implanted into a pair of antagonist muscles spanning each joint of the hindlimb: gluteus medius, iliopsoas, vastus lateralis, semi–tendinosus, gastrocnemius medialis, tibialis anterior, extensor digitorum longus, flexor hallucis longus. An extensive laminectomy was performed to expose all the lumbar and sacral segments, and visualize the dorsal roots projecting to each segment. Motor evoked potentials were simultaneously recorded in all the implanted muscles while delivering rectangular pulses (0.2 ms duration) at 0.5 Hz through epidural electrodes. The electrode was positioned at the locations identified by simulations using dorsal roots and the spinal cord midline as anatomical landmarks. The intensity of the electrical stimulation was increased progressively from 20 to 300 μA . Electromyographic signals (12.207 kHz) were amplified, filtered (1–5000 Hz bandpass), and stored for off–line analysis. The root mean square (RMS) of the motor evoked potentials were calculated for each muscle, and represented in color–coded spatial maps of motoneuron activation that were directly meshed onto the spinal cord model. The methodology to compute these maps is explained above.

Spinal Implant

Design and fabrication—Epidural implants were fabricated using ultra-violet (UV) photolithographic patterning of a photosensitive polyimide, as well as micro electroforming to create gold electrodes and embedded gold interconnects. Polyimide is a mechanically and chemically robust polymer material that showed a high level of biocompatibility⁵⁵. Processing of the implants was performed on wafer scale, which allowed parallel fabrication of ten devices or more on a 125 mm silicon wafer serving as carrier wafer. Processing started with deposition of a 20 µm thick polyimide film by spin coating on the silicon substrate. UV lithography was used to shape the polyimide-based bottom layer, which constituted the footprint of the implant. A 200 nm thick gold layer was deposited using vacuum evaporation and lithographically structured providing a conductive seed pattern. Gold was then electroplated to a height of approximately 6 µm to create the electrodes and leads. A 20 µm cover layer of photosensitive polyimide resist was applied by spin coating to uniformly cover the bottom and electrode structure. A final UV lithography step was conducted to structure the top layer of the implant, and create openings over the electrodes and contact pads. Before peeling off the implants from the carrier wafer, holes were punctuated through the polyimide using mechanical punching to promote the growth of conjunctive tissues that stabilized implants over time. To create a connector, the contact pads located at the extremity of the implant were glued to a small support plate made of medical grade PMMA sheet material. Precision milled alignment structures allowed fine adjustment of the support plate to the polyimide-based implant, and to the extremity of the leads. The support plate contained a seat in which a tiny printed circuit board (PCB) with conductive stripes was fixed. Stainless steel leads with FEP (Fluorinated Ethylene Propylene) insulation (AS-632, Cooner Wire) were directly soldered to the contact pads of the implant via the contact stripes located on the PCB. The resulting implants and connective leads were highly reliable mechanically and electrically. Finally, the entire contact area was covered with a UV-curable, methacrylate-based resin that provided tight sealing. For improved bio-integration, the contact interface was over-molded with a thin layer of medical grade silicone (Supplementary Fig. 4).

Long Term Functionality of Spinal Implants

Induction of movement and motor evoked potentials—The ability to spinal implants to engage specific muscles and to elicit distinct movements was tested using short bursts of stimulation delivered through chronic spinal implants. After recovery from implantation (around 2 weeks), rats ($n = 6$) were lightly anesthetized with ketamine, and suspended in the air in a custom-made jacket. Electromyographic activity was recorded at 2 kHz in conjunction with bilateral hindlimb kinematics (see above). Stimulations were delivered at 40 Hz, and synchronized with recordings of motor evoked potentials and kinematic data. Stimulation conditions were randomized and blinded to the experimenter. To avoid repeated anesthesia of animals, experiments were repeated 4 times on one day.

To verify the long-term functionality of electrodes, motor evoked potentials were recorded weekly in fully awake rats. For each electrode of the spinal implant, single-pulses (0.2 ms, 0.5 Hz) were delivered at increasing intensities. The current threshold necessary to elicit motor evoked potentials in the left and right tibialis anterior muscles was measured. The

obtained values were normalized to baseline recordings, and averaged across rats and electrodes.

Electrode impedance—The impedance of electrodes embedded in the spinal implants was recorded using a bipolar electrode configuration. The counter electrode was created by removing the insulation of a Teflon-coated stainless wire at its extremity, and implanted the electrode subcutaneously. Impedance at 1 kHz was obtained with a potentiostat equipped with a frequency response analyzer (Reference 600, Gamry Instruments). Weekly electrochemical impedance spectroscopy measurements of all the electrodes of the spinal implants were made in fully awake rats.

Real-Time Monitoring Platform and Control Policies

Software development—The real-time monitoring and control platform was implemented within a multi-threaded C++ code (Visual Studio 2010, Microsoft) running on a quad core Microsoft Windows 7 computer. Stimulation patterns were applied via an RZ5 processing unit (Tucker-Davis Technologies) connected to an MS16 Stimulus Isolator (Tucker-Davis Technologies). The integrated Vicon recording system generated raw 3D positions of the markers, which were imported into the C++ environment in (soft) real time via Ethernet using the DataStream SDK software. We developed a custom algorithm for online interpolation of missing markers through triangulation and relabeling of each marker to the appropriate joint landmark. All signals were filtered online using least mean squares adaptive filters.

The control logic triggered individual electrodes based on trajectory of left and right hindlimb endpoints. Triggering-events were extracted for each electrode individually. Control algorithms continuously calculated the angular trajectory of the foot around a virtual center of rotation in the sagittal plane. The change in on-off state of each electrode configuration was triggered when the angular values crossed user-defined thresholds that were previously optimized for each electrode and rat during mapping experiments (Supplementary Fig. 6).

The algorithm calculated for each gait-cycle k the estimated position of the virtual center of rotation \hat{C}_k derived from the trajectory T_k of each foot in the sagittal plane as:

$$(x_C, y_C) = (x_{max}, \frac{1}{N} \sum_{j=1}^N y_j)$$

where x_{max} is the x-coordinate at the point of highest step-height (y_{max}), and N the number of data-points recoded per gait cycle. In order to prevent jittering due to cycle-to-cycle variability, the estimate of the center of rotation was iteratively updated at every gait cycle as:

$$\hat{C}_k = \hat{C}_{k-1} + \mu (C_{k-1} - \hat{C}_{k-1})$$

with an updating factor $\mu = 0.2$. This approach captured the natural alternation of stance and swing phases during gait despite intrinsic variability within and in-between gait cycles. This procedure was also inherently invariant to scaling, and compliant enough to detect triggering-times with high fidelity compared to other methods that exhibit increase in variability with deteriorated gait movements. These control algorithms provide a flexible tool to study and implement phase-dependent modulation of neuroprosthetic system in real-time during gait.

To evaluate the delay in the processing time of this loop, we simulated an input and recorded the time necessary to adapt the stimulation parameters. This delay included the processing of video recordings by the motion capture system, the transfer of this data via Ethernet to a real-time control computer, the processing of this data using dedicated libraries, the changes in the parameters of the stimulus isolator, and the delivery of the modified stimulation pulse through the plug mounted on the head of the rat. We sent concomitant pulses at opposite ends of the loop, and calculated the discrepancy between both signals after each iteration, for more than 100 successive cycles. The computed delays remained below 20 ms. Custom-developed C++ and Tucker-Davis Technologies codes will be made available through material transfer agreement upon request to G.C.

Behavioral Recordings

Behavioral conditions—Rats were recorded under two conditions. First, bipedal locomotion was recorded on a treadmill while the robotic bodyweight support system provided optimal support against the direction of gravity and prevented lateral falls. Second, quadrupedal locomotion was recorded along a straight runway with a flat surface, and along a staircase that combined a succession of 4 steps, as described previously⁵⁴. All the experimental conditions within and between recording sessions were randomized. Experiments were replicated at least twice on two successive days for each reported time-point. Behavioral recordings were blinded after stimulation amplitudes were set by one of the experimenter, who remained with the animal and remained blinded to the stimulation conditions during experiments. A second experimenter who operated the recording equipment verified the appropriate timing of spatiotemporal neuromodulation during experiments.

Spatiotemporal neuromodulation in rats with complete SCI—Electrochemical stimulation protocols were selected based on an extensive amount of previous studies in rats with complete and incomplete SCI^{5,7}. The serotonergic replacement therapy used during training was administered systemically prior to testing. After a few minutes, monopolar electrical stimulation currents were delivered between relevant electrodes of the implants and an indifferent ground located subcutaneously. The intensity of electrical spinal cord stimulation was tuned (40 Hz, 50–300 μ A, biphasic rectangular pulses, 0.2 ms duration) to obtain optimal stepping visually.

To optimize the timing of stimulation onset and end for each relevant electrode of the spinal implant, we performed a comprehensive mapping that linked the timing of stimulation with functional effects in rats with complete transection of the thoracic spinal cord. For each rat

($n = 5$), the duration of the gait cycle (800 ± 156 ms, SD) was normalized, and then divided into 10 equal bins that served as triggering events to turn the stimulation on or off. For electrodes targeting extensor versus flexor hotspots, the stimulation was turned on or off over the entire range of bins. A total of 10 steps were usually recorded for each electrode and bin. Temporal structure was optimized based on the modulation of a few gait parameters that characterized the expected effects of the stimulation. The timing of the electrodes targeting the extensor hotspot was driven by the amplitude of ankle extensor muscle activity, the amount of vertical ground reaction forces, and the intensity and amount of foot acceleration at push off (Supplementary Fig. 6). The timing of the electrodes targeting the flexor hotspot was driven by amplitude of flexor muscle activity, the amount of foot dragging, step height, and the intensity and orientation of foot acceleration at swing onset (Supplementary Fig. 6). These parameters were weighted equally for identification of the optimal temporal structure for each hotspot.

After optimization of the temporal structure, the ability of spatiotemporal neuromodulation to mediate superior facilitation of locomotion compared to continuous neuromodulation was tested in the same rats during bipedal locomotion on a treadmill. A total of 10 to 20 successive steps were recorded during continuous neuromodulation (40 Hz, 20–200 μ A, biphasic rectangular pulses, 0.2 ms duration) applied through electrodes located over the midline of spinal segments L2–L3 and S1 (conventional protocols), and through spatially selective electrodes located on the lateral aspect of the same segments. Locomotor performance was compared with neuromodulation applied through the same spatially selective lateral electrodes with the identified temporal structure. The amount of robot-assisted bodyweight support was maintained constant across conditions. The amplitude of stimulation was adjusted for each condition. The amplitudes optimal for spatiotemporal neuromodulation could not be used for continuous neuromodulation since these values led to diminished performances, and could occasionally block hindlimb movements.

The maximum weight bearing capacities of each rat with contusion SCI was tested under continuous neuromodulation and spatiotemporal neuromodulation around 7 weeks post-SCI. From an optimal vertical weight support condition, the amount of assistance was decreased by 5 % increments after each sequence of ten successful steps, until the rats collapsed. Kinematic and muscle activity was recorded throughout these evaluations.

The endurance of rats with contusion SCI was recorded on two different days that were randomized across animals, around 7 weeks post-SCI. From an optimal vertical weight support condition, rats stepped with continuous neuromodulation or spatiotemporal neuromodulation until they collapsed onto the treadmill. Concomitant kinematic recordings were used to measure the step height of each step.

Rats with contusion SCI ($n = 6$) were evaluated during quadrupedal locomotion at 2 months post-SCI, when functional recovery had plateaued⁵. Rats performed 4 successive trials without stimulation and with the serotonergic replacement therapy and spatiotemporal neuromodulation, both along the runway and staircases. Bilateral hindlimb and trunk kinematics were recorded during these trials. The percent of tumbles, touches, and passes over the steps was computed based on video recordings. Tumbles were defined as dragging

throughout the execution over the step, whereas touches characterized gait cycles during which the paw entered into contact with the steps but passed it successfully. The events were classified as “pass” when the paw had no contact with the step during the entire swing phase.

Data Analysis

Statistics—All the computed parameters were quantified and compared between tested groups, unless otherwise specified. Statistics were performed on averaged values per rat. All data are reported as mean values \pm SEM, unless specified otherwise. Significance was analyzed using paired Student’s t-test, ANOVA or repeated measures ANOVA when data were distributed normally. Post hoc comparisons were performed using the Kruskal–Wallis test. The non-parametric tests Mann–Whitney was used comparisons with less than 6 rats.

The size of the experimental groups was selected to minimize the number of sentient animals used in the studies, while providing sufficient information to report significant and reliable results. One animal from the complete SCI group had to be excluded from the analysis of spatiotemporal maps due to failure of some of the electrodes to record muscle activity. However, this animal could still be used for the analysis of whole-body kinematics, kinetics and muscle activity of ankle muscles. Gait cycles were excluded from data analysis when stimulation profiles were delivered with incorrect timing during behavioral recordings, which occurred in less than 3 % of all gait cycles for spatiotemporal neuromodulation. For continuous neuromodulation, none of the gait cycles had to be excluded. The group size, methods and the statistics are reported in the Supplementary Table 2.

Supplementary Material

Refer to Web version on PubMed Central for supplementary material.

Acknowledgments

We thank countless individuals who passionately helped along the past 6 years to take care of injured animals and to test multiple iterations of neural implants. We also would like to thank Prof. D. Pioletti for providing access to the micro-computed tomography (CT) scanner. N.W. is participant in the Charité Clinical Scientist Program funded by the Charité–Universitätsmedizin Berlin and the Berlin Institute of Health. Funding was provided by the European Community’s Seventh Framework Program [CP–IP 258654, NeuWALK, G.C., S.M., E.B., J.B., P.D]; a Starting Grant from the European Research Council [ERC 261247, Walk Again, G.C.]; Russian Science Foundation (development of the surgical implantation by RSF grant № 14–15–00788, P.M.), and funding from the Swiss National Science Foundation including the National Center of Competence in Research (NCCR) in Robotics (G.C., S.L., S.M.), Dynamo project (S.M.), and NanoTera.ch program [SpineRepair] (G.C., S.L., S.M.).

References

1. Borton D, Micera S, Millan Jdel R, Courtine G. Personalized neuroprosthetics. *Science translational medicine*. 2013; 5:210rv212.
2. Lozano AM, Lipsman N. Probing and regulating dysfunctional circuits using deep brain stimulation. *Neuron*. 2013; 77:406–424. [PubMed: 23395370]
3. Barthelemy D, Leblond H, Rossignol S. Characteristics and mechanisms of locomotion induced by intraspinal microstimulation and dorsal root stimulation in spinal cats. *Journal of neurophysiology*. 2007; 97:1986–2000. [PubMed: 17215509]
4. Courtine G, et al. Transformation of nonfunctional spinal circuits into functional states after the loss of brain input. *Nature neuroscience*. 2009; 12:1333–1342. [PubMed: 19767747]

5. van den Brand R, et al. Restoring voluntary control of locomotion after paralyzing spinal cord injury. *Science*. 2012; 336:1182–1185. [PubMed: 22654062]
6. Holinski BJ, Everaert DG, Mushahwar VK, Stein RB. Real-time control of walking using recordings from dorsal root ganglia. *Journal of neural engineering*. 2013; 10:056008. [PubMed: 23928579]
7. Wenger N, et al. Closed-loop neuromodulation of spinal sensorimotor circuits controls refined locomotion after complete spinal cord injury. *Science translational medicine*. 2014; 6:255ra133.
8. Carhart MR, He J, Herman R, D'Luzansky S, Willis WT. Epidural spinal-cord stimulation facilitates recovery of functional walking following incomplete spinal-cord injury. *IEEE transactions on neural systems and rehabilitation engineering : a publication of the IEEE Engineering in Medicine and Biology Society*. 2004; 12:32–42.
9. Angeli CA, Edgerton VR, Gerasimenko YP, Harkema SJ. Altering spinal cord excitability enables voluntary movements after chronic complete paralysis in humans. *Brain*. 2014
10. Gerasimenko Y, et al. Noninvasive Reactivation of Motor Descending Control after Paralysis. *J Neurotrauma*. 2015
11. Herman R, He J, D'Luzansky S, Willis W, Dilli S. Spinal cord stimulation facilitates functional walking in a chronic, incomplete spinal cord injured. *Spinal cord*. 2002; 40:65–68. [PubMed: 11926417]
12. Capogrosso M, et al. A computational model for epidural electrical stimulation of spinal sensorimotor circuits. *The Journal of neuroscience : the official journal of the Society for Neuroscience*. 2013; 33:19326–19340. [PubMed: 24305828]
13. Rattay F, Minassian K, Dimitrijevic MR. Epidural electrical stimulation of posterior structures of the human lumbosacral cord: 2. quantitative analysis by computer modeling. *Spinal cord*. 2000; 38:473–489. [PubMed: 10962608]
14. Ladenbauer J, Minassian K, Hofstoetter US, Dimitrijevic MR, Rattay F. Stimulation of the human lumbar spinal cord with implanted and surface electrodes: a computer simulation study. *IEEE transactions on neural systems and rehabilitation engineering: a publication of the IEEE Engineering in Medicine and Biology Society*. 2010; 18:637–645.
15. Hofstoetter US, et al. Periodic modulation of repetitively elicited monosynaptic reflexes of the human lumbosacral spinal cord. *Journal of neurophysiology*. 2015 jn 00136 02015.
16. Gerasimenko YP, et al. Spinal cord reflexes induced by epidural spinal cord stimulation in normal awake rats. *Journal of neuroscience methods*. 2006; 157:253–263. [PubMed: 16764937]
17. Sayenko DG, Angeli CA, Harkema SJ, Edgerton VR, Gerasimenko YP. Neuromodulation of evoked muscle potentials induced by epidural spinal cord stimulation in paralyzed individuals. *Journal of neurophysiology*. 2013
18. Danner SM, et al. Human spinal locomotor control is based on flexibly organized burst generators. *Brain*. 2015; 138:577–588. [PubMed: 25582580]
19. Edgerton VR, et al. Training locomotor networks. *Brain research reviews*. 2008; 57:241–254. [PubMed: 18022244]
20. Rejc E, Angeli C, Harkema S. Effects of Lumbosacral Spinal Cord Epidural Stimulation for Standing after Chronic Complete Paralysis in Humans. *PloS one*. 2015; 10:e0133998. [PubMed: 26207623]
21. Yakovenko S, Mushahwar V, VanderHorst V, Holstege G, Prochazka A. Spatiotemporal activation of lumbosacral motoneurons in the locomotor step cycle. *Journal of neurophysiology*. 2002; 87:1542–1553. [PubMed: 11877525]
22. Cappellini G, Ivanenko YP, Dominici N, Poppele RE, Lacquaniti F. Migration of motor pool activity in the spinal cord reflects body mechanics in human locomotion. *Journal of neurophysiology*. 2010; 104:3064–3073. [PubMed: 20881204]
23. Ivanenko YP, et al. Temporal components of the motor patterns expressed by the human spinal cord reflect foot kinematics. *Journal of neurophysiology*. 2003; 90:3555–3565. [PubMed: 12853436]
24. Dominici N, et al. Locomotor primitives in newborn babies and their development. *Science*. 2011; 334:997–999. [PubMed: 22096202]

25. Kiehn O. Locomotor circuits in the mammalian spinal cord. *Annual review of neuroscience*. 2006; 29:279–306.
26. Berniker M, J A, Bizzi E, Tresch MC. Simplified and effective motor control based on muscle synergies to exploit musculoskeletal dynamics. *PNAS*. 2009; 106:7601–7606. [PubMed: 19380738]
27. Lee DD, Seung HS. Learning the parts of objects by non-negative matrix factorization. *Nature*. 1999; 401:788–791. [PubMed: 10548103]
28. Gaunt RA, Prochazka A, Mushahwar VK, Guevremont L, Ellaway PH. Intraspinal microstimulation excites multisegmental sensory afferents at lower stimulus levels than local alpha-motoneuron responses. *Journal of neurophysiology*. 2006; 96:2995–3005. [PubMed: 16943320]
29. Lavrov I, et al. Epidural stimulation induced modulation of spinal locomotor networks in adult spinal rats. *The Journal of neuroscience : the official journal of the Society for Neuroscience*. 2008; 28:6022–6029. [PubMed: 18524907]
30. Minassian K, et al. Stepping-like movements in humans with complete spinal cord injury induced by epidural stimulation of the lumbar cord: electromyographic study of compound muscle action potentials. *Spinal cord*. 2004; 42:401–416. [PubMed: 15124000]
31. Ichiyama RM, et al. Step training reinforces specific spinal locomotor circuitry in adult spinal rats. *The Journal of neuroscience : the official journal of the Society for Neuroscience*. 2008; 28:7370–7375. [PubMed: 18632941]
32. Gad P, et al. Forelimb EMG-based trigger to control an electronic spinal bridge to enable hindlimb stepping after a complete spinal cord lesion in rats. *Journal of neuroengineering and rehabilitation*. 2012; 9:38. [PubMed: 22691460]
33. Bioengineering N.I.o.B.I.a. Framework for a Research Study on Epidural Spinal Stimulation to Improve Bladder, Bowel, and Sexual Function in Individuals with Spinal Cord Injuries. National Institutes of Health; 2015.
34. Bizzi E, Tresch MC, Saltiel P, d'Avella A. New perspectives on spinal motor systems. *Nat Rev Neurosci*. 2000; 1:101–108. [PubMed: 11252772]
35. Bernstein, N. *The co-ordination and regulation of movements*. Pergamon Press; Oxford: 1967.
36. Giszter SF. Motor primitives—new data and future questions. *Current opinion in neurobiology*. 2015; 33:156–165. [PubMed: 25912883]
37. La Scaleia V, Ivanenko YP, Zelik KE, Lacquaniti F. Spinal motor outputs during step-to-step transitions of diverse human gaits. *Frontiers in human neuroscience*. 2014; 8:305. [PubMed: 24860484]
38. Hagglund M, et al. Optogenetic dissection reveals multiple rhythmogenic modules underlying locomotion. *Proceedings of the National Academy of Sciences of the United States of America*. 2013; 110:11589–11594. [PubMed: 23798384]
39. Levine AJ, et al. Identification of a cellular node for motor control pathways. *Nature neuroscience*. 2014; 17:586–593. [PubMed: 24609464]
40. Tripodi M, Stepien AE, Arber S. Motor antagonism exposed by spatial segregation and timing of neurogenesis. *Nature*. 2011; 479:61–66. [PubMed: 22012263]
41. Grillner S, Jessell TM. Measured motion: searching for simplicity in spinal locomotor networks. *Current opinion in neurobiology*. 2009; 19:572–586. [PubMed: 19896834]
42. Arber S. Motor circuits in action: specification, connectivity, and function. *Neuron*. 2012; 74:975–989. [PubMed: 22726829]
43. Bourane S, et al. Identification of a spinal circuit for light touch and fine motor control. *Cell*. 2015; 160:503–515. [PubMed: 25635458]
44. Hart CB, Giszter SF. A neural basis for motor primitives in the spinal cord. *The Journal of neuroscience : the official journal of the Society for Neuroscience*. 2010; 30:1322–1336. [PubMed: 20107059]
45. Kargo WJ, Ramakrishnan A, Hart CB, Rome LC, Giszter SF. A simple experimentally based model using proprioceptive regulation of motor primitives captures adjusted trajectory formation in spinal frogs. *Journal of neurophysiology*. 2010; 103:573–590. [PubMed: 19657082]

46. Sayenko DG, Angeli C, Harkema SJ, Edgerton VR, Gerasimenko YP. Neuromodulation of evoked muscle potentials induced by epidural spinal–cord stimulation in paralyzed individuals. *J Neurophysiol.* 2014; 111:1088–1099. [PubMed: 24335213]
47. Zeng FG, Rebscher S, Harrison W, Sun X, Feng H. Cochlear implants: System design, integration, and evaluation. *IEEE Rev Biomed Eng.* 2008; 1:115–142. [PubMed: 19946565]
48. Capaday C. The special nature of human walking and its neural control. *Trends in neurosciences.* 2002; 25:370–376. [PubMed: 12079766]
49. Clarac F, Cattaert D, Le Ray D. Central control components of a 'simple' stretch reflex. *Trends in neurosciences.* 2000; 23:199–208. [PubMed: 10782125]
50. Canbay S, et al. Anatomical relationship and positions of the lumbar and sacral segments of the spinal cord according to the vertebral bodies and the spinal roots. *Clinical anatomy.* 2014; 27:227–233. [PubMed: 23649511]
51. Mariani B, Jimenez MC, Vingerhoets FJ, Aminian K. On–shoe wearable sensors for gait and turning assessment of patients with Parkinson's disease. *IEEE Trans Biomed Eng.* 2013; 60:155–158. [PubMed: 23268531]
52. Afshar P, et al. A translational platform for prototyping closed–loop neuromodulation systems. *Frontiers in neural circuits.* 2012; 6:117. [PubMed: 23346048]
53. Minev IR, et al. Biomaterials. Electronic dura mater for long–term multimodal neural interfaces. *Science.* 2015; 347:159–163. [PubMed: 25574019]
54. Dominici N, et al. Versatile robotic interface to evaluate, enable and train locomotion and balance after neuromotor disorders. *Nature medicine.* 2012; 18:1142–1147.
55. Stieglitz T, Meyer JU. Implantable microsystems. Polyimide–based neuroprostheses for interfacing nerves. *Med Device Technol.* 1999; 10:28–30.

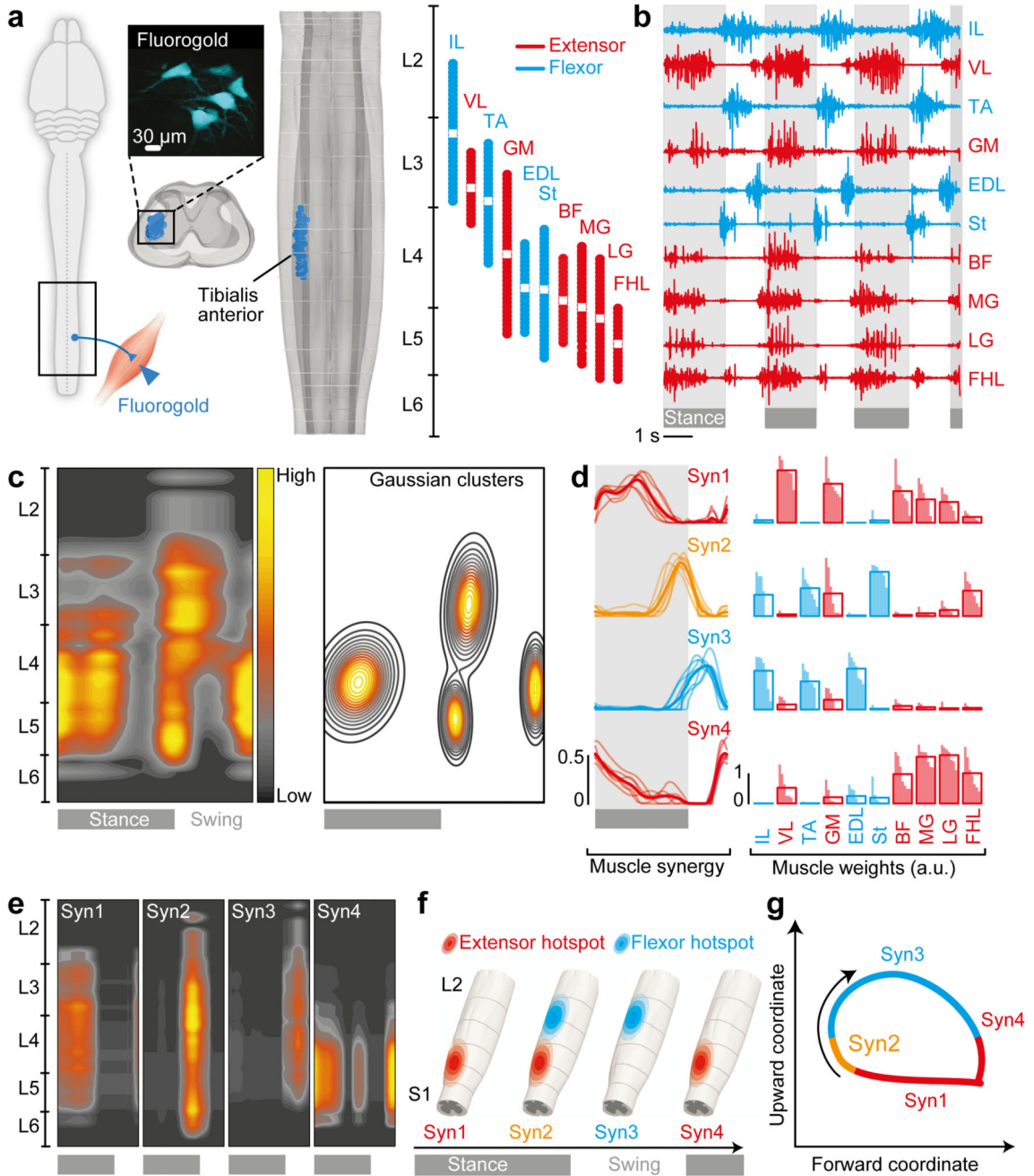


Figure 1. Spatiotemporal activation of hindlimb motoneuron during locomotion

(a) Diagram illustrating tracer injections into the tibialis anterior (TA) muscle to label motoneurons. Top-down and coronal snapshots of 3D lumbosacral reconstructions; each TA motoneuron is represented by a single dot. The same procedure was applied to gluteus medius (GM), iliopsoas (IL), vastus lateralis (VL), semi-tendinosus (St), biceps femoris (BF), gastrocnemius medialis (MG), gastrocnemius lateralis (LG), extensor digitorum longus (EDL), and flexor hallucis longus (FHL) muscles. The rostrocaudal location and center (white square) of each reconstructed motoneuron column is indicated in red and blue

for muscles acting functionally for extension versus flexion, respectively. **(b)** Muscle activity during locomotion in an intact rat. **(c)** The muscle activity was projected onto the motoneuron location matrix to elaborate the spatiotemporal map of motoneuron activation. The spatially restricted hotspots emerging during gait were extracted by applying a Gaussian cluster algorithm onto the map. **(d)** Mean (thick lines) and individual (thin lines, $n = 7$ rats) temporal activation profiles of muscle synergies (Syn 1–4), and histogram plots reporting muscle weighting for each rat (vertical bars) and muscle on each muscle synergy. **(e)** Spatiotemporal maps of muscle synergy activation, elaborated by representing the temporal activation profiles onto the weighted motoneuron matrix. **(f)** Model of spinal segments depicting the temporal sequence underlying the recruitment of muscle synergies, and the corresponding activation of extensor and flexor hotspots. **(g)** Illustration of the timing underlying muscle synergy activation, as captured in the spatiotemporal trajectory of the hindlimb endpoint.

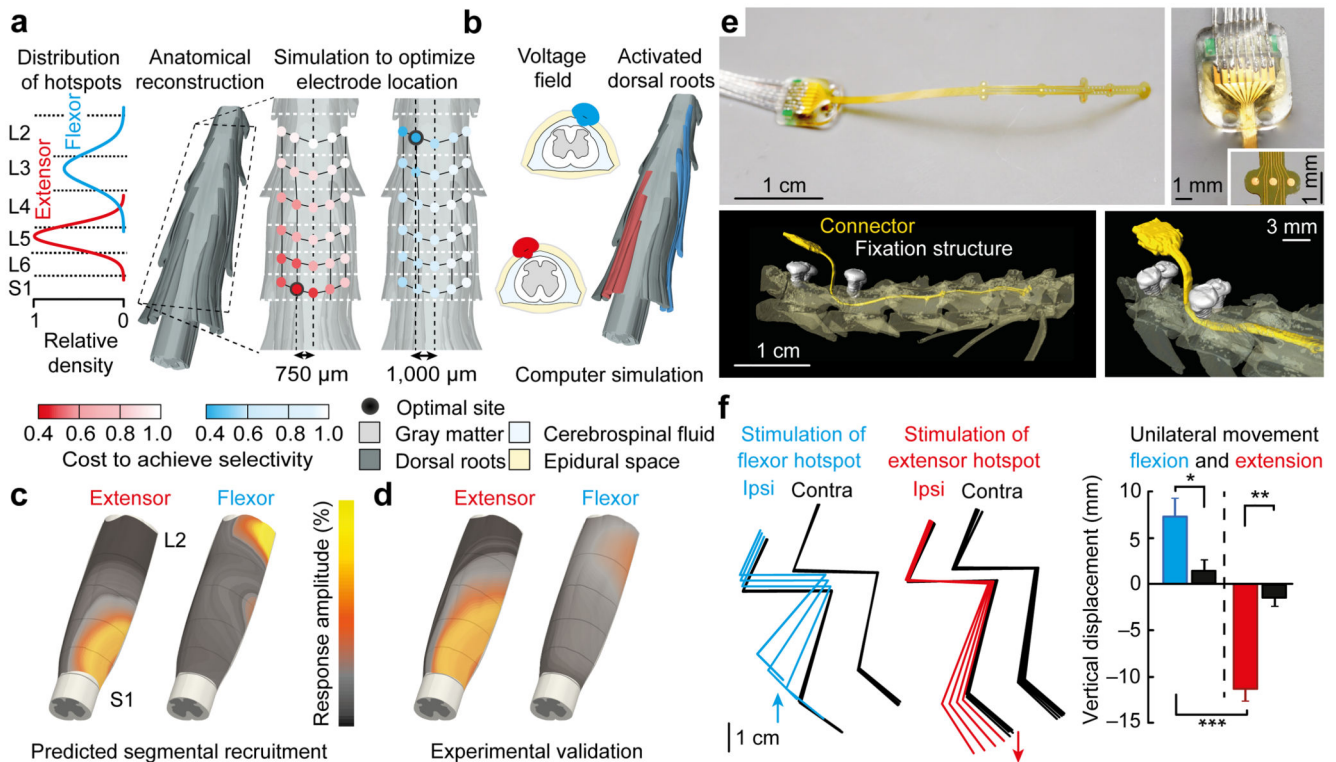


Figure 2. Design, fabrication and validation of spatially selective spinal implants

(a) An optimization algorithm identified the cost to preferentially activate dorsal roots projecting to extensor versus flexor hotspots. The Gaussian curves display the spatial distribution of each hotspot. The dorsal roots were reconstructed in 3D ($n = 3$ rats). Computer simulations were iterated over a grid of electrodes covering the targeted neural structures. The black circles indicate the optimal locations of electrodes. (b) Computer simulations showing isopotential 1 V surface following a 150 μA stimulation at each identified electrode location, including the resulting dorsal root activation. (c) Spatial maps of spinal segment activation for the optimal electrodes predicted by computer simulations and (d) experimental validation in anesthetized rats ($n = 4$). The map is computed from motor responses recorded from eight hindlimb muscles, as described previously (Fig. 1). (e) Photographs, including zooms on electrodes and connector, showing spinal implants. The 3D rendering was reconstructed from high-resolution micro-computed tomography (μCT) scans performed after 5 weeks of implantation. (f) Under suspended conditions, a series of four bursts (40 Hz) was delivered through the electrodes targeting each hotspot. The resulting stick diagram decomposition of hindlimb movements is shown for the ipsilateral (color) and contralateral (black) side to the stimulation, together with histogram plots reporting the vertical displacement of the hindlimb endpoint (ANOVA one-way, $n = 6$, mean and SEM. *, $P < 0.05$; **, $P < 0.01$; ***, $P < 0.001$)

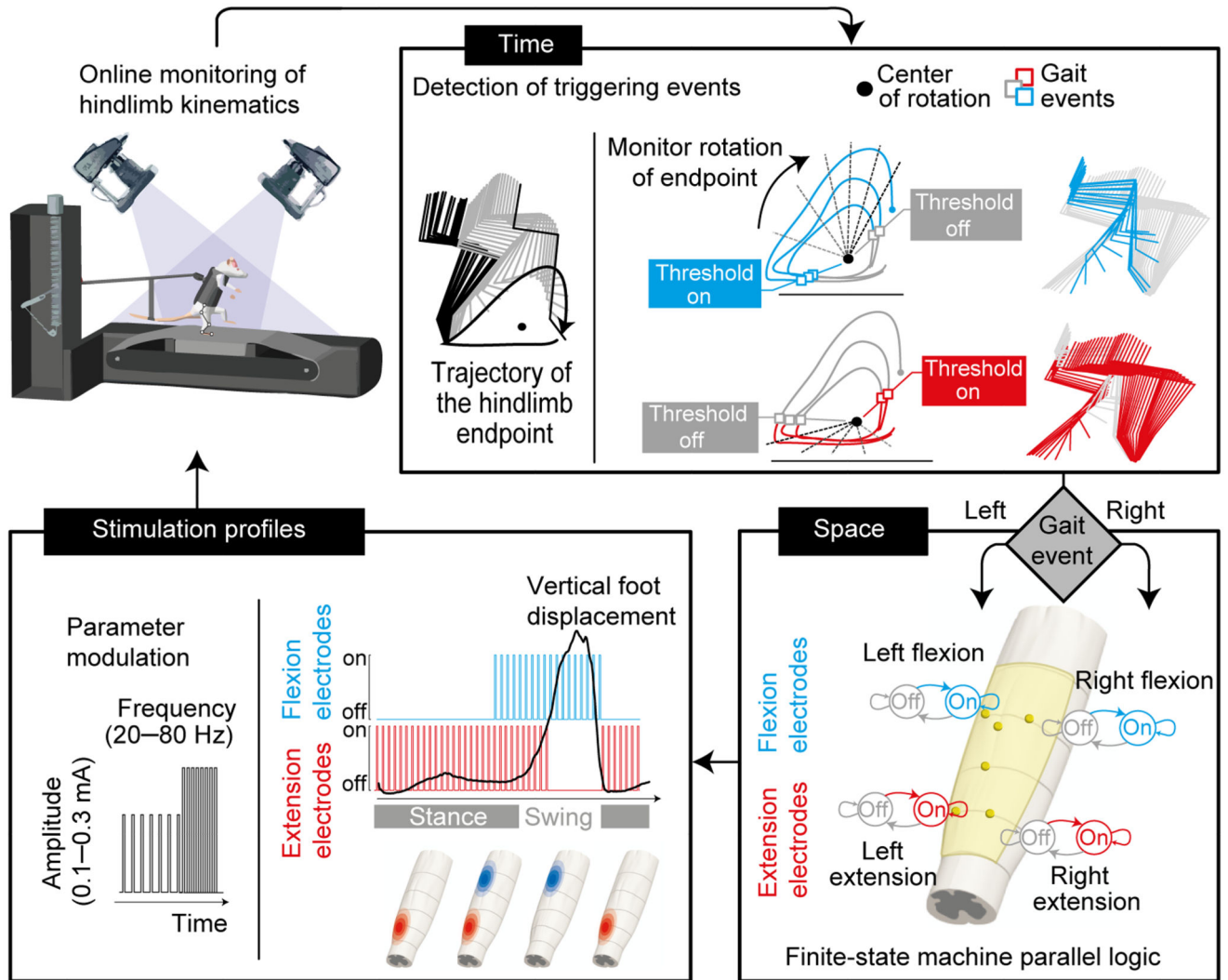


Figure 3. Software to adjust spatiotemporal neuromodulation in real-time during locomotion

Computational platform to trigger adjustments of the temporal structure, spatial configuration and stimulation parameters of the neuromodulation therapies. Rats were supported bipedally in a robotic system provided vertical support during locomotion onto a motorized treadmill belt. A high-resolution video system allowed real-time monitoring of the left and right hindlimb endpoints (feet). The angular displacements of hindlimb endpoints around a calculated center of rotation were converted into angular coordinates, as indicated with the dotted grey lines. The on and off states of electrodes targeting extensor- and flexor-related hotspots were triggered when the angular coordinates crossed user-defined thresholds, personalized for each rat. The stimulation profile module enabled tuning the amplitude and frequency of stimulation based on the therapist or control policies. The diagram represents the relationship between the vertical displacement of the foot and the activation of extensor and flexor hotspot, and how the spatially selective electrodes were turned on and off to replicate this activation pattern.

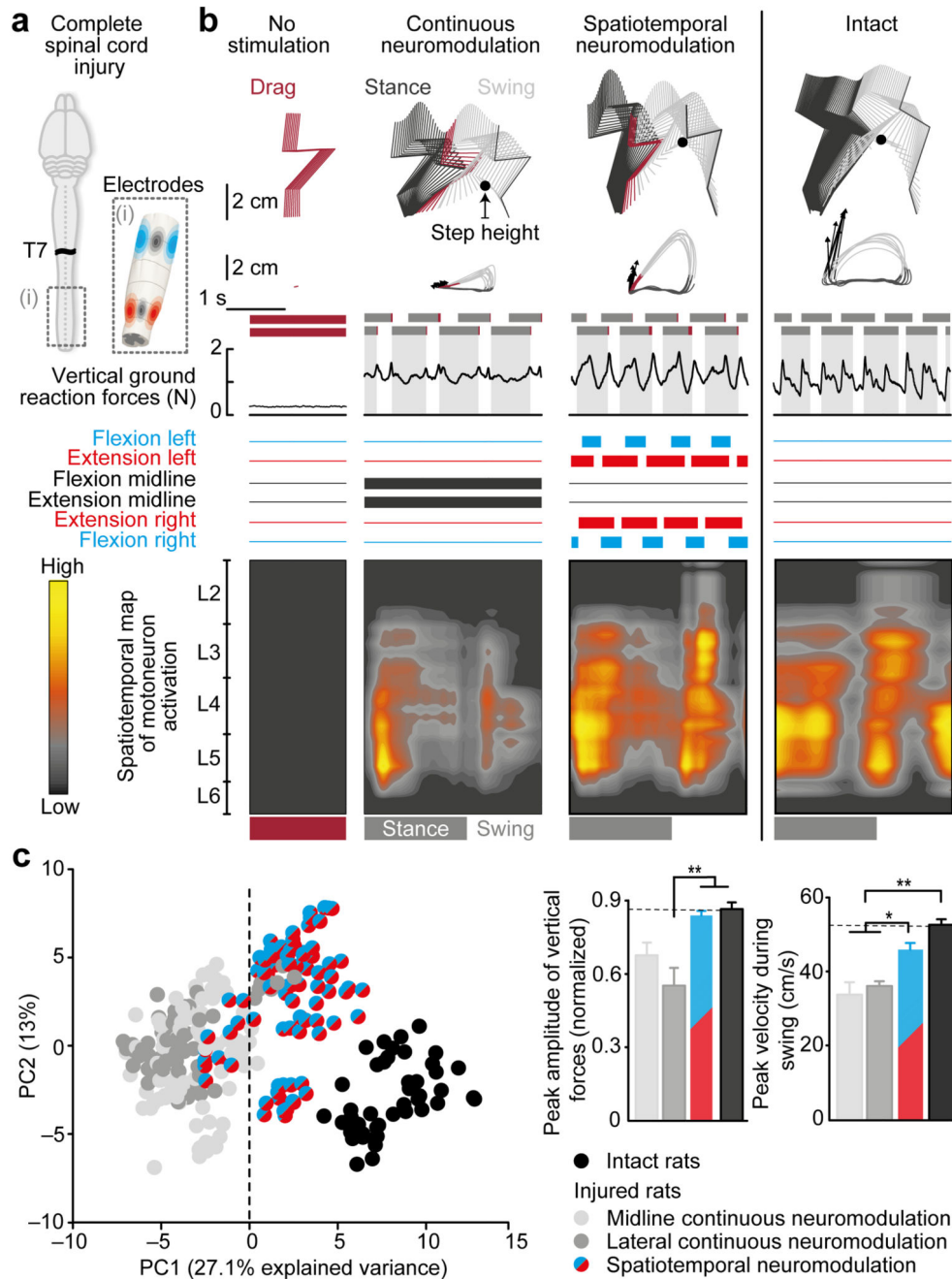


Figure 4. Spatiotemporal neuromodulation reproduces the natural pattern of motoneuron activation

(a) Rats receive a complete SCI at the thoracic level (T8) and a spinal implant with conventional midline electrodes (black) and spatially selective lateral electrodes (blue and red). (b) Locomotion was recorded on a treadmill without stimulation, with continuous neuromodulation applied over the midline of lumbar and sacral segments, and during spatiotemporal neuromodulation. For each condition (same rat, $n = 5$) and intact rats ($n = 3$), a stick diagram decomposition of left hindlimb movement is shown together with successive trajectories of the hindlimb endpoint, the velocity and orientation of the foot trajectory at toe

off (vector with arrowheads), the stance (dark gray), drag (dark red) and swing phases (light gray) of both hindlimbs, and vertical ground reaction forces during a continuous sequence of steps. The horizontal bars (blue, red, black) indicate the current state of the electrodes. The corresponding spatiotemporal maps of motoneuron activation were calculated over ten consecutive steps. Conventions are the same as previously (Fig. 1). (c) Left, PC analysis applied on 137 gait parameters with all the gait cycles recorded in rats ($n = 5$) under the different conditions of neuromodulation are represented in a PC space. Right, histogram plots report mean peak amplitude of vertical ground reaction forces and the mean peak velocity of the foot during swing for the different neuromodulation conditions and for intact rats. (Kruskal Wallis, mean and SEM. *, $P < 0.05$; **, $P < 0.01$)

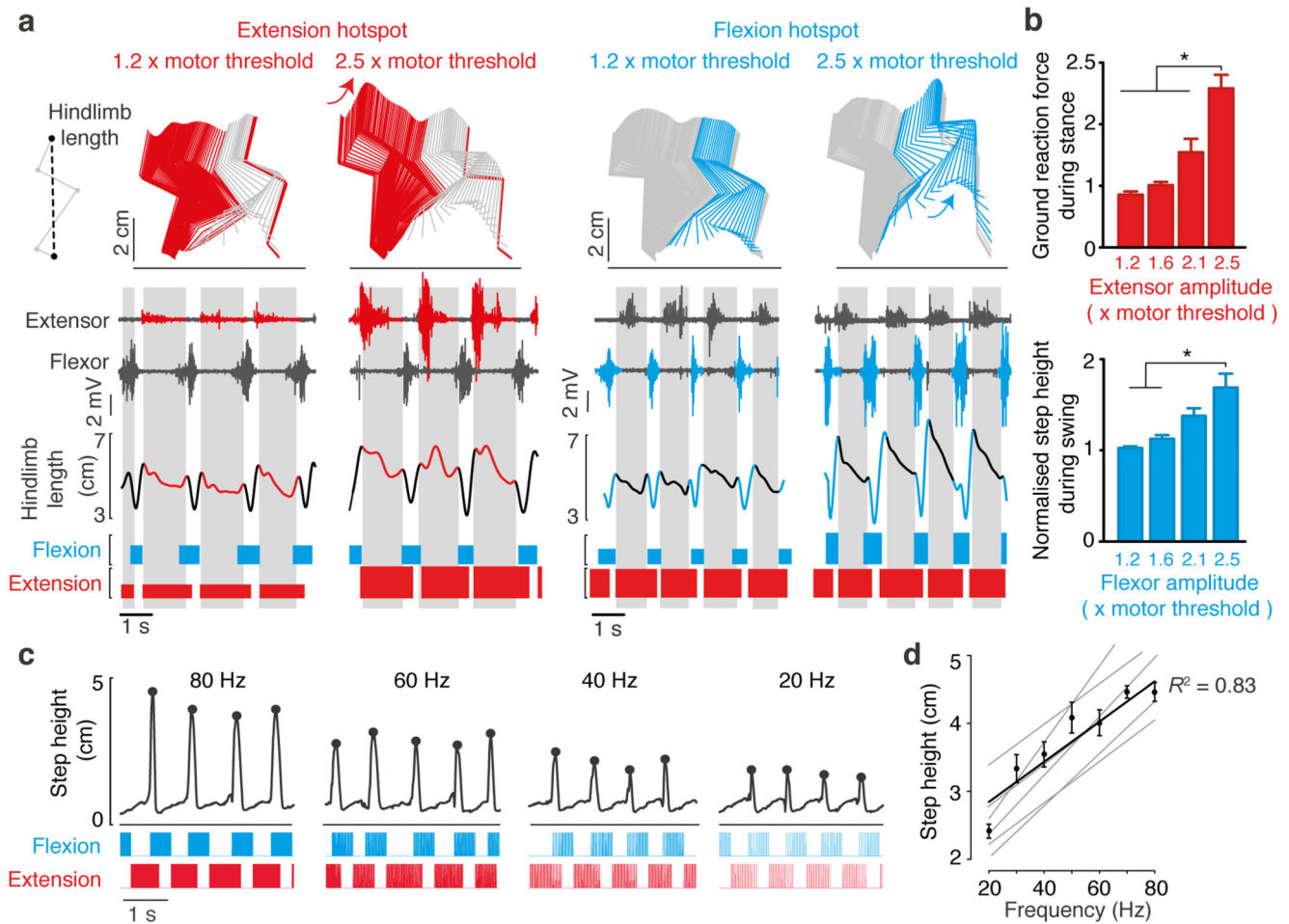


Figure 5. Selective and gradual modulation of extension and flexion components

(a) Locomotor sequences recorded during spatiotemporal neuromodulation in an injured rat with different levels of stimulation amplitudes for the electrode targeting the extensor (left) versus flexor (right) hotspot. A representative stick diagram decomposition of hindlimb movement is shown for each condition. The colors correspond to the period during which the modulated electrode is turned on. Below, the electromyographic activity of extensor and flexor ankle muscles is displayed together with the changes in hindlimb length for a series of steps. The upper right diagram explains the calculation of the hindlimb length, which combines changes over multiple joints of the hindlimb. The spatiotemporal pattern of stimulation is shown at the bottom. The height of the bars is proportional to the stimulation amplitude. (b) Histogram plots reporting the mean vertical ground reaction forces measured during stance while modulating the amplitude of the extension electrode, and the mean step height measured during swing while modulating the flexion electrode (One-way ANOVA, $n = 5$, mean and SEM. *, $P < 0.05$.). (c) Vertical foot displacements during locomotion under different stimulation frequency adjusted over both extension and flexion electrodes. The dots highlight the step height. Each pulse of stimulation is represented in the spatiotemporal patterns of stimulation shown at the bottom. (d) The plot displays the relationships between

the stimulation frequency and the step height for all the rats together and each rat individually (thin line, $n = 6$).

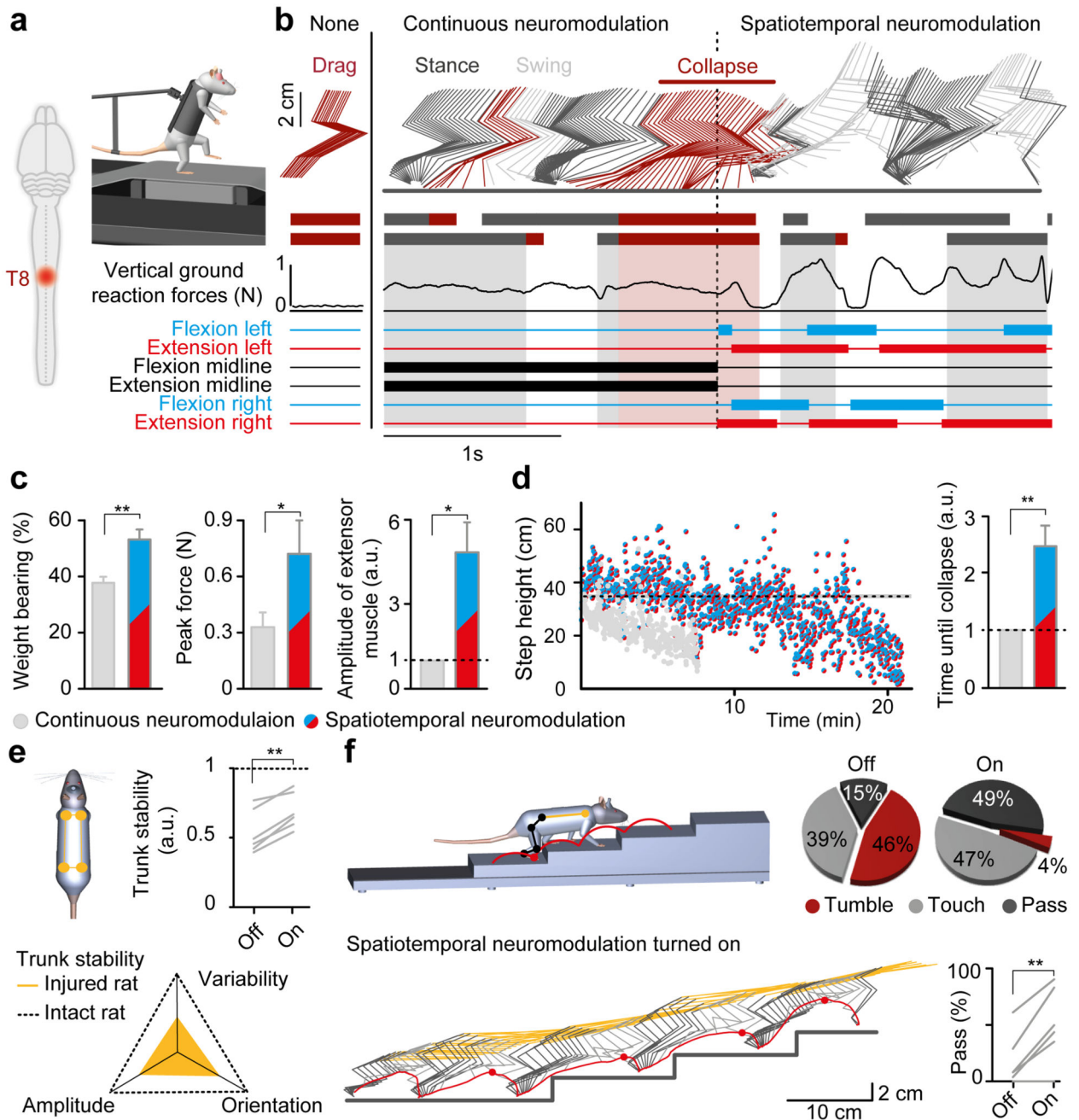


Figure 6. Spatiotemporal neuromodulation improves motor control after clinically relevant SCI (a) Rats received a contusion at T8. (b) Locomotion was recorded 14 days after injury on a treadmill. Continuous neuromodulation led to rapid fatigue, but spatiotemporal neuromodulation instantaneously restored locomotion. (c) Histogram plots reporting the maximum weight-bearing capacities, maximal vertical ground reaction forces, and amplitude of extensor muscle activity measured in the same rats during continuous versus spatiotemporal neuromodulation (paired t-test, $n = 6$, *, $P < 0.05$, **, $P < 0.01$). (d) Left, successive step heights measured during a sequence recorded in the same rat under both

paradigms. The horizontal line indicates the mean of step height measured in intact rats ($n = 3$). The shaded area reports the SEM. Right, bar plots report the normalized duration of locomotion (paired t -test, $n = 6$, $P < 0.01$). (e) Rats were recorded during quadrupedal locomotion at two months post-SCI. Parameters related to trunk dynamics were computed to obtain an index quantifying trunk stability relative to intact rats. The improvement of this index is shown for each rat individually (paired t -test, $n = 6$, $P < 0.01$). (f) Stick diagram decomposition of hindlimb and trunk movements together with hindlimb endpoint trajectory during staircase climbing under spatiotemporal neuromodulation. The diagrams report the percent of tumbles, touches and passes over the steps under both conditions. The percent of successful passes over the step is shown for each rat individually (paired t -test, $n = 6$, $P < 0.01$).