

Bursts of activity in collective cell migration

Oleksandr Chepizhko^a, Costanza Giampietro^b, Eleonora Mastrapasqua^c, Mehdi Nourazar^a, Miriam Ascagni^c, Michela Sugni^b, Umberto Fascio^c, Livio Leggio^c, Chiara Malinverno^d, Giorgio Scita^d, Stéphane Santucci^e, Mikko J. Alava^a, Stefano Zapperi^{a,f,g,h}, and Caterina A. M. La Porta^{b,1}

^aDepartment of Applied Physics, Aalto University, FIN-00076 Aalto, Espoo, Finland; ^bDepartment of Biosciences, Center for Complexity and Biosystems, University of Milan, 20133 Milan, Italy; ^cDepartment of Biosciences, University of Milan, 20133 Milan, Italy; ^dDipartimento di Scienze della Salute, San Paolo, University of Milan, 20122 Milan, Italy; ^eLaboratoire de Physique de l'École Normale Supérieure de Lyon, UMR CNRS 5672, Université de Lyon, 69364 Lyon, France; ^fDepartment of Physics, Center for Complexity and Biosystems, University of Milan, 20133 Milan, Italy; ^gInstitute for Scientific Interchange Foundation, 10126 Torino, Italy; and ^hIstituto di Chimica della Materia Condensata e di Tecnologie per l'Energia, Consiglio Nazionale delle Ricerche, 20125 Milan, Italy

Edited by Herbert Levine, Rice University, Houston, TX, and approved August 19, 2016 (received for review January 11, 2016)

Dense monolayers of living cells display intriguing relaxation dynamics, reminiscent of soft and glassy materials close to the jamming transition, and migrate collectively when space is available, as in wound healing or in cancer invasion. Here we show that collective cell migration occurs in bursts that are similar to those recorded in the propagation of cracks, fluid fronts in porous media, and ferromagnetic domain walls. In analogy with these systems, the distribution of activity bursts displays scaling laws that are universal in different cell types and for cells moving on different substrates. The main features of the invasion dynamics are quantitatively captured by a model of interacting active particles moving in a disordered landscape. Our results illustrate that collective motion of living cells is analogous to the corresponding dynamics in driven, but inanimate, systems.

collective cell migration | avalanches | universality | vascular endothelial cadherin | collagen substrate

Collective cell movement depends on intracellular biological mechanisms as well as environmental cues due to the extracellular matrix (1–5), mainly composed of collagen which is organized in hierarchical structures, such as fibrils and fibers. The mechanical properties of collagen fibril networks are essential to offer little resistance and high sensitivity to small deformations, allowing easy local remodeling and strong strain stiffening needed to ensure cell and tissue integrity (6). Wound healing is a typical biological assay to study collective migration of cells under controlled conditions in vitro and is a prototypical experimental method to study active matter (7–10). Experiments performed on soluble collagen (11) or other gels (12), micropatterned (13, 14) and deformable substrates (1) show that cell migration is guided by the substrate structure and stiffness (5, 15, 16).

It has been argued that collective migration properties arise from stresses transmitted between neighboring cells (1) giving rise to long-ranged stress waves in the monolayer (17, 18). Hence the dynamics of an invading cell sheet is ruled by a combination of long-range internal stresses and interactions with the substrate, suggesting an analogy with driven elastic systems moving in a disordered medium such as cracks lines (19, 20), imbibition fronts (21), or ferromagnetic domain walls (22). The scaling laws in these systems are usually associated with a depinning critical point that has been widely studied by simple models for interface dynamics. Thanks to a combination of numerical simulations (23, 24) and renormalization group theory (23, 25–27), we now have a detailed picture of the nonequilibrium phase transitions and universality classes in these systems. Here we substantiate the analogy between collective cell migration and depinning by revealing and characterizing widely distributed bursts of activity in the collective migration of different types of cells (human cancer cells and epithelial cells, mouse endothelial cells) over different substrates (plastic, soluble, and fibrillar collagen) and experimental conditions [vascular endothelial (VE)-cadherin knockdown] and compare the experiments with simulations of a computational model of active particles (10). We find that in all these cases the statistical properties of the bursts follow universal scaling laws that are quantitatively similar to those observed in driven disordered systems (28).

Results and Discussion

Cell-Front Dynamics and Activity Clusters. We perform migration experiments on different cell lines as described in *Materials and Methods*. We extract and record the cell-front position as a function of time as shown in Fig. 1 for experiments (Movies S1–S7) and in simulations (Movie S8). The fronts show a rough structure with localized bursts of activity that is reminiscent of elastic lines moving in a pinning landscape (19–22). Spatiotemporal velocity fluctuations in moving fronts can be effectively quantified by constructing activity maps, as done previously for moving crack fronts (20) and fluid imbibition through porous media (21). As discussed in *Materials and Methods*, from each time-lapse movie we construct a spatial map $v^f(x,y)$ measuring the velocity of the front at position (x,y) (SI Appendix, Fig. S1). Using these maps we can define regions of coordinated activity by introducing a threshold c for the velocity. The maps reported in Fig. 1 vividly illustrate the formation of localized clusters of activity similar to those found in fracture (20) and imbibition (21). The corresponding distributions of cluster areas are reported in Fig. 24 for experiments on different cell types and for simulations. They all display a power-law decay $P(S) \sim S^{-\tau}$ up to a cutoff length S^* .

The exponent τ of the power-law distribution appears to be similar for different cell types: the fitted values (SI Appendix, Table S1) are all similar within error bars ($\tau \simeq 1.4 - 1.6$) and remarkably close to the values recorded in crack-front propagation (20). As observed in moving crack fronts, the cluster distributions, and in particular the cutoff to the power-law decay, depend on the threshold c used to identify the activity (*Materials and Methods* and SI Appendix, Fig. S1). The value of the cutoff S^* is in all cases much larger than the typical size of a cell, indicating that correlated activity spans multiple cells (SI Appendix, Fig.

Significance

During wound healing and in cancer invasion, cells migrate collectively driven by active internal forces and invade the available space. Here we show that this motion occurs by intermittent bursts of activity described by universal scaling laws similar to the ones observed in other driven systems where a front propagates in response to an external force, such as in fracture and fluid imbibition. Our results demonstrate that living systems display universal nonequilibrium critical fluctuations, induced by cell mutual interactions, that are usually associated with externally driven inanimate media.

Author contributions: M.J.A., S.Z., and C.A.M.L.P. designed research; O.C., C.G., E.M., M.N., M.A., M.S., U.F., L.L., C.M., G.S., and C.A.M.L.P. performed research; O.C., M.N., and S.S. analyzed data; and S.Z. and C.A.M.L.P. wrote the paper.

The authors declare no conflict of interest.

This article is a PNAS Direct Submission.

Freely available online through the PNAS open access option.

¹To whom correspondence should be addressed. Email: caterina.laporta@unimi.it.

This article contains supporting information online at www.pnas.org/lookup/suppl/doi:10.1073/pnas.1600503113/-DCSupplemental.

quantitative differences between different cell types and substrates. However, the general shape of the velocity distribution is similar in all cases as shown in Fig. 3C, where the velocities for each experiment are rescaled by their average value. This leads to a collapse of all of the distributions, including the results of numerical simulations, apart from small deviations in the tails.

Effect of VE-Cadherin Knockdown. Internal couplings usually play a key role in avalanche statistics (23, 25–27). To understand this point in our context, we assess the role of cell–cell interactions performing the same cell migration assay knocking down VE-cadherin in mouse endothelial cells (29). VE-cadherin is an endothelial-specific cadherin molecule located at adherent junctions which regulates adhesion between adjacent endothelial cells. Here we consider cells without VE-cadherin (VEC-null) but still expressing *N*-cadherin, another important molecule expressed by several types of cells such as neuronal, skeletal, and heart muscle cells or fibroblasts (30). Moreover, *N*-cadherin is

highly expressed in mesenchymal stem cells and cancer cells that are highly invasive and poorly polarized (31). As shown in Fig. 4A, VEC-null cell fronts move faster, but in a more disordered way (*SI Appendix, Fig. S6*) than VEC-positive fronts. The distribution of activity cluster areas is very similar in the two cases (Fig. 4A), with slightly larger cutoff size for VEC-positive cells (*SI Appendix, Fig. S2*). Despite these similarities, VEC-null cells tend to detach from the advancing front and move forward (*Movie S9*). We have tracked the trajectories of individual cells (Fig. 4C) and shown that they follow a persistent random walk, displaying ballistic motion at short time scales (Fig. 4D). The combination of faster fronts and individual cells detachment confirms a more invasive phenotype for VEC-null cells (32).

Numerical Simulations of an Active Particle Model. To better understand how avalanche-like fluctuations arise in collective cell migration, we simulate the model of interacting active particle introduced in ref. 10 (for the details, see *Materials and Methods*).

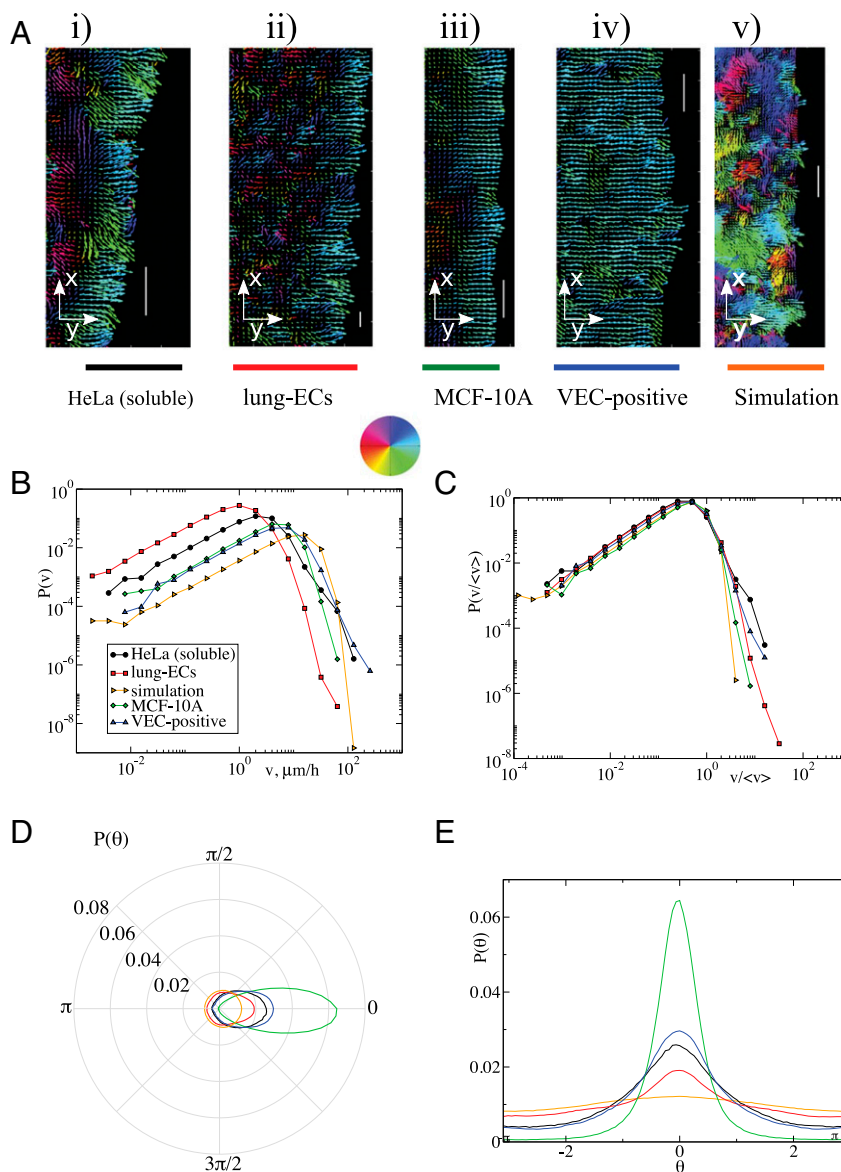


Fig. 3. Cell velocity distributions display universal statistics. (A) Velocity maps for different cell types and for simulations as obtained from PIV. The colors indicate the orientation of the velocity following the color wheel. The length of the arrows is proportional to the magnitude of the velocity. (Scale bar, 100 μm .) (B) The corresponding distributions of velocity magnitudes. (C) Scaling the velocities by their magnitude leads to a collapse of all of the distributions, apart from small deviations in the tails. (D and E) The distribution of the orientations of the velocities.

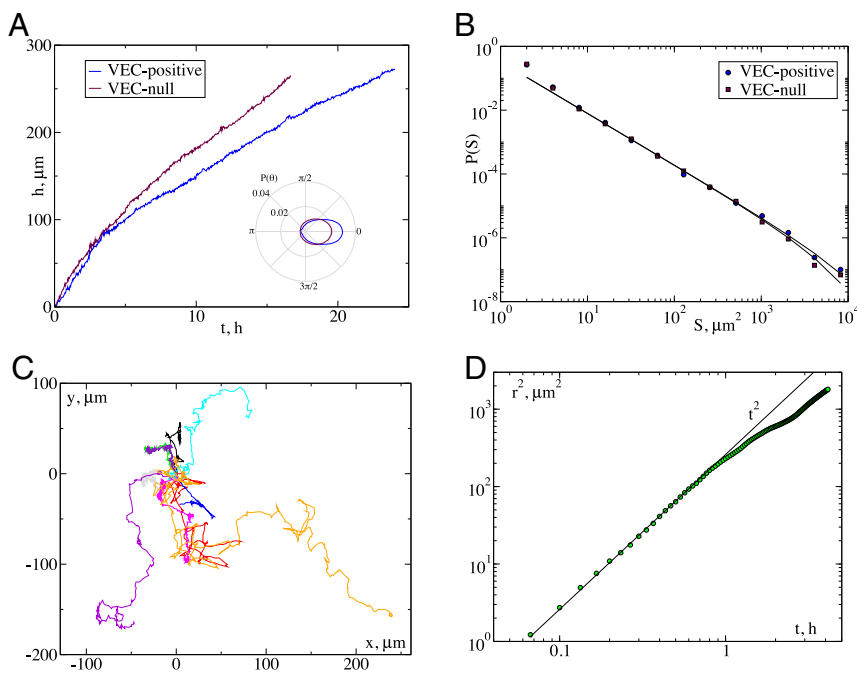


Fig. 4. Knockdown of VE-cadherin leads to faster fronts and individual cell motion. (A) The time evolution of the front position for mouse endothelial cell expressing (VEC-positive) or not (VEC-null) VE-cadherin. VEC-null cells move faster. (B) The corresponding cluster size distribution displays the same exponent and small changes in the cutoff. (C) In the VEC-null cases cells detach from the front and invade the space individually following trajectories as the ones illustrated. (D) The average mean-square displacement of the trajectories indicates an initial ballistic regime followed by a slowing down.

The geometry of the system, the size, and number of particles are chosen to match the experimental images. Particles are first packed into a confined space and then allowed to invade space filled with “surface” particles. For the time scales considered in the present experiments, cell division is negligible and therefore we do not consider it in the model. The main tuning parameters of the model are the interparticle velocity coupling β , the amplitude of the noise η , and the adhesion strength U_1 . We also take into account the rough structure of the fibrillar collagen substrate by including a quenched (i.e., time-independent) random force field with amplitude σ_{rf} and correlation length ζ . Simulations representing plastic or soluble collagen substrate are performed without quenched disorder (i.e., $\sigma_{rf} = 0$), with fluctuations arising only from the random initial condition and the time-dependent noise in the dynamics. In addition to the random force field, the main difference between our simulations and ref. 10 is that we do not consider leader cells.

The numerical simulations allow us to reproduce with good accuracy all of the salient features of collective cell migration revealed by our experiments as reported in Figs. 1–3. As already discussed, the numerical simulations reproduce the statistical features of activity bursts (Fig. 2) and cell velocities (Fig. 3). Furthermore, the numerical results illustrate the key role played by the substrate disorder, encoded in its correlation length ζ , in determining the cutoff scale of the cluster size distribution (SI Appendix, Fig. S7). In particular, higher values of ζ correspond to larger activity clusters. This explains why cells move in larger activity bursts on fibrillar substrates, where disorder is stronger. Decreasing the velocity coupling β or the adhesion strength U_1 increases the front velocity (SI Appendix, Fig. S8), which should be compared with an analogous result observed when VE-cadherin is knocked down (Fig. 4). The model allows us to explore the limits of universality. We observe an activity cluster distribution comparable to the experimentally measured one only for relatively small values of β . When β is larger (e.g., $\beta = 60$) the exponent τ is significantly smaller, suggesting the presence of different universality classes (see SI Appendix, Fig. S7 and Table S2 for the results of the fits). Finally, we assess the relevance of interactions (i.e., performing simulations with $\beta = 0$ and $U_0 = U_1 = 0$) and pinning (i.e., no surface particles and no random field) and find that when either one of the two ingredients is missing, the distribution is not a power law anymore (SI Appendix, Fig. S9). When neither

pinning nor interactions are present, we cannot record a well-defined front.

Universal Scaling. The combinations of experimental results and numerical simulations suggest that the activity bursts observed in collective cell migration could be described by universal scaling laws as in nonequilibrium critical phenomena. To strengthen this conclusion it is, however, imperative to overcome the limitations of power-law fitting (33) and focus instead on scaling functions, as indicated by Sethna et al. (28). Refs. 24, 27 show that in proximity of a depinning critical point, avalanche distributions $P(S)$ can be written as $P(S) = (\langle S \rangle / S^*) p(S/S^*)$, where $S^* = \langle S^2 \rangle / 2\langle S \rangle$ and $p(s)$ is a universal scaling function. Here, we follow the same approach with our data and show that indeed all of the experimental distributions, involving different cell lines and substrates, and those obtained from numerical simulations collapse into a single universal scaling curve as shown in Fig. 5. We thus perform a joint fit of all of the distributions with a single scaling function $p(s) = s^{-\tau} \exp(-Cs)$, yielding $\tau = 1.58 \pm 0.02$ as best fitting parameter. This result provides a strong test of the universality of the bursty behavior we observe in collective cell migration.

Discussion

The collective motion of a cell layer as it invades an empty region has been extensively studied experimentally (7–10) but the relation with the glassy features observed in confluent layers (34, 35) was not explored. The externally driven motion of disordered and glassy systems typically involves intermittent behavior and avalanches (28). Our work shows that collective bursts of activity are also present in active matter with cells advancing in avalanches of widely distributed sizes. Similar intermittent activity (36) and scaling behavior has been previously recorded in animal (37) and even human mobility patterns (38) and it is thus intriguing to realize that it exists even at the cellular level. Finally, migration is a key property of tumor cells for tissue invasion and metastasis. Our detailed statistical analysis shows quantitatively how the organization and structure of the substrate, either gel or fibrillar, affects the way cells move. The final invasion velocity is the same but the motion is different, with larger intermittent fluctuations present on fibrillar substrates. This finding is interesting because it implies that cancer cells use different

internal mechanisms to migrate depending on the environment, a fact that should be relevant for the metastatic process.

Materials and Methods

Collagen Coating. Collagen substrates are prepared from a 3% solution of soluble bovine collagen in 0.01 HCl (code C4243, Sigma), kept in ice until use. Both solubilized (“soluble collagen”) and refibrillated collagen (“fibrillar collagen”) are prepared in 35-mm Petri dishes. For soluble substrates a sufficient amount of collagen solution is added to a Petri dish so that the bottom is covered, the excess is removed after 15 min, and the dish is dried at room temperature for at least 2 h. For fibrillar substrates, a mixture of 3% (mass/vol) collagen solution (code C4243, Sigma), 0.1 N NaOH, 10% PBS (8:1:1) is prepared and 0.8 mL are pipetted to the Petri dish and incubated at 37 °C overnight to allow the proper gelification/refibrillation. After polymerization, samples are 5–10 μm in height.

Cell Culture. HeLa cell line (ATCC CCL-2) is cultured in DMEM supplemented with 10% FCS, 2 mM L-glutamine, 100 U/mL penicillin, 100 mg/mL streptomycin, and 0.25 mg/mL amphotericin B (Invitrogen) at 37 °C and humidity (95% relative humidity), and CO₂ concentration [5% (vol/vol)]. Cells are seeded in bovine soluble collagen, or fibrillar bovine collagen or without collagen-coated dishes and grow up to reach confluence overnight. Endothelial cells were derived from embryonic stem cells with homozygous null mutation of the VE-cadherin gene (VEC-null) (39). The wild-type form of VE-cadherin was introduced in these cells (VEC-positive) as described in detail in ref. 40. Endothelial cells were isolated from lungs of wild-type adult mice and cultured as previously described (29). Starving medium was MCDB 131 (Invitrogen) with 1% BSA (EuroClone), 2 mM glutamine, 100 U/liter penicillin/streptomycin, and 1 mM sodium pyruvate. The MCF-10A cell line is a nontumorigenic human mammary epithelial cell line (ATCC CRL10317) grown in DMEM/F12 supplemented with 5% (vol/vol) horse serum, 20 ng/mL EGF, 0.5 mg/mL hydrocortisone, 100 ng/mL Cholera toxin, and 10 μg/mL insulin.

Migration Assay. For the migration assay, a wound is introduced in the central area of the confluent cell sheet by using a pipette tip and the migration followed by time-lapse imaging. HeLa cells were stained with 10-μM cell tracker green CMFDA (5-chloromethylfluorescein diacetate) (Molecular Probes) in serum-free medium for 30 min and then the complete medium was replaced. Mouse endothelial cell monolayers were wounded after an overnight starving, washed with PBS, and incubated at 37 °C in starving medium. MCF-10A cell monolayers were wounded after an O/N doxycycline induction, washed with PBS, and incubated at 37 °C in fresh media + doxycycline.

Time-Lapse Imaging. For HeLa cells, time-lapse multifield experiments were performed using an automated inverted Zeiss Axiovert S100 TV2 microscope (Carl Zeiss Microimaging Inc.) with a chilled Hamamatsu CCD camera Orca-ER. Displacements of the sample and the image acquisition are computer-controlled using Oko-Vision software (from okolab). This microscope was equipped with a cage incubator designed to maintain all of the required

environmental conditions for cell culture all around the microscopy workstation, thus enabling us to carry out prolonged observations on biological specimens. Cell tracker and phase-contrast images were acquired with an A-Plan 10× (N.A. 0.25) objective; the typical delay between two successive images of the same field was set to 10 min for 12 h. For mouse endothelial cells and MCF-10A cells, time-lapse imaging of cell migration was performed on an inverted microscope (Eclipse TE2000-E; Nikon) equipped with an incubation chamber (okolab) maintained at 37 °C in an atmosphere of 5% (vol/vol) CO₂. Movies were acquired with a Cascade II 512 (Photometrics) CCD camera controlled by MetaMorph Software (Universal Imaging) using a 4× or 10× magnification objective lens (Plan Fluor 10, N.A. 0.30). Images were acquired every 2 or 5 min over a 24-h period. See *SI Appendix, Table S3* for the time-lapse parameters.

SEM. Collagen substrates are fixed with 2% (mass/vol) glutaraldehyde in 0.1 M cacodylate buffer for 2 h at 4 °C and postfixed with 1% osmium tetroxide in 0.1 M sodium cacodylate buffer (2 h, room temperature). After several washings with dH₂O, they are dehydrated in an increasing ethanol scale and treated with a series of solutions of hexamethyldisilazane (HMDS) and ethanol in different proportions (1:3, 1:1, 3:1, and 100% HMDS), mounted on stubs, covered with pure gold (Agar SEM Auto Sputter). The samples are observed under an SEM (LEO-1430, Zeiss).

PIV. The measurements of the velocity field were done using PIVlab app for MATLAB (41, 42). The method is based on the comparison of the intensity fields of two consequent photographs of cells. The difference in the intensity is converted into velocity field measured in pixels per frame. Then the velocity is converted to micrometers per hour through coefficient that is specific for each experiment, shown in *SI Appendix, Table S3*.

Border Progression Measurement. The method of border detection is based on the procedures described in refs. 43, 44. The method is based on the border extraction procedure described in the manual of the MATLAB software package (CellSegmentationExample).

Front Activity Maps. We analyze the propagation of the cell front by measuring for each recorded image, and thus, at each time step t , the cell-front position $y = h(x, t)$, along the abscissa x . We then construct a local velocity map of such interface $v^f(x, y)$ by computing the velocity of the cell front at each position of the front $[x, y = h(x, t)]$ during its progression:

$$v^f(x, y = h(x, t_i)) = \frac{h(x, t_{i+1}) - h(x, t_i)}{t_{i+1} - t_i}$$

SI Appendix, Fig. S1A provides such spatial color-scale map $v^f(x, h(x, t))$ of the local velocity fluctuations for a typical wound-healing experiment using HeLa cells moving on a soluble collagen substrate. The various regions of different color levels reveal an intermittent burst-like dynamics on a broad range of length scales. Such a complex dynamics can also be unveiled by representing the spatiotemporal map $v^f(x, t)$ giving the instantaneous velocity of each point of the cell front during its propagation, as shown in *SI Appendix, Fig. S1B*. Occasional overhangs in the front are eliminated by the maximum value of h for a given x . When the front locally moves backward, we average all of the velocity values at that point. To define areas of correlated activity, we consider the spatial map of the local front velocities $v^f(x, h(x, t))$ and define avalanches as clusters of velocities larger than an arbitrary threshold (20, 21): $v^f(x, h(x, t)) \geq c \langle v^f \rangle$, where $\langle v^f \rangle$ is the mean front velocity during the experiment (*SI Appendix, Fig. S1C*). Cluster sizes S are given by the area of the clusters, and their shape is characterized by their length l (lateral extension along x) and their width w (extension in the mean direction of propagation y). The cutoff of the cluster size distribution depends slightly on c , but its scaling exponent does not (*SI Appendix, Fig. S1D*).

Simulations of the Active Particle Model. We simulate collective cell migration using a modified version of the model introduced in ref. 10. Here we introduce a pinning field and we do not consider a leader cell.

The main equation of motion is given by

$$\frac{dv_i}{dt} = -\alpha v_i + \sum_j \left[\frac{\beta}{N_j} (v_j - v_i) + \mathbf{f}_{ij} \right] + \sigma(\rho_i) \eta_i + \mathbf{F}_{\text{rt}}(x_i), \quad [1]$$

where the sum is restricted to the nearest neighbors of i , α is a damping parameter, β is the velocity coupling strength, $\mathbf{f}_{ij} = -\nabla_j U(r_{ij})$ is the force between neighboring cells, where

$$U(r) = U_0 \exp\left(-\frac{r}{a_0}\right)^2 + U_1 (r - a_1)^2 H(r - a_1). \quad [2]$$

Here $H(x)$ is the Heaviside function $H(x) = 1$ for $x > 0$ and $H(x) = 0$ otherwise, U_1 is the adhesion, and U_0 the repulsive strength. The noise

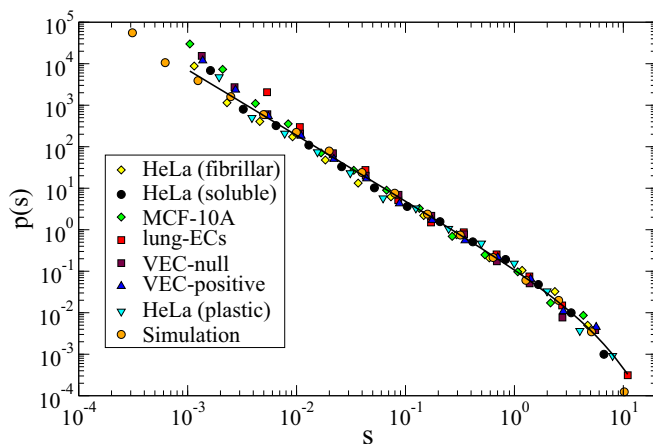


Fig. 5. Distribution of activity clusters is universal. The distributions of the areas of activity clusters from Figs. 2 and 4 can all be collapsed into a single universal scaling function $p(s) = s^{-7} \exp(-Cs)$ (line) when plotted in terms of the reduced variable $s = S/S^*$.

term is $\sigma(\rho_i)\eta_i$, where η_i is an Ornstein–Uhlenbeck process with correlation time τ :

$$\tau \frac{d\eta_i}{dt} = -\eta_i + \xi_i, \quad [3]$$

where ξ_i is a delta-correlated white noise, independent for each cell ($\langle \xi_i(t)\xi_j(t') \rangle = \delta_{ij}\delta(t-t')$). The amplitude of the noise term σ depends on the density of the neighboring particles ρ_i :

$$\sigma(\rho_i) = \sigma_0 + (\sigma_1 - \sigma_0)(1 - \rho_i/\rho_0). \quad [4]$$

The neighbors of each particle are defined in the same way as ref. 10. The neighborhood of a particle i is split into six equal sectors. The particle closest to the particle i in each sector (but closer than the interaction radius of 100 μm) is chosen to be a neighbor. The local density is computed then as $\rho_i = 1/[\pi(\langle d \rangle)^2]$, where $\langle d \rangle$ is the average distance between cell i and its six neighbors (for sectors without neighbors the distance is taken to be 100 μm). To model heterogeneous substrates we include an additional random force field $F_{\text{rf}}(\mathbf{x}_i)$. A pair of Gaussian distributed random numbers, representing the two components of the random force, are placed on a square grid of spacing ζ , quantifying the correlation length of the disorder. The value of random force between grid points is obtained through bilinear interpolation.

As in the original model, the free surface is modeled by surface particles that are hindering cells to enter the empty space. The interaction between a surface particle and a cell is modeled as

$$\mathbf{f}_{ij}^s = -\nabla_i U^s(r_{ij}), \quad [5]$$

where $U^s(r)$ is $U^s(r) = A_s \exp(-r/a_s)^2$. A scalar damage variable q is associated with each surface particles and follows the equation

$$\nu \frac{dq_i}{dt} = \sum_{j \in S_i} |f_{ij}^s|. \quad [6]$$

The values of the parameters that were used for simulations match the ones used in ref. 10: number of particles $N = 4,000$, size of the box $2L \times L$, $L = 1,000 \mu\text{m}$, $\alpha = 1.42 \text{ h}^{-1}$, β varying, but the value used in most of the simulations was $\beta = 10 \text{ h}^{-1}$, $\tau = 1.39 \text{ h}^{-1}$, $\sigma_0 = 150 \mu\text{m h}^{-3/2}$, $\sigma_1 = 300 \mu\text{m h}^{-3/2}$, $U_0 = 2,400 \mu\text{m}^2/\text{h}^2$, $a_0 = 8 \mu\text{m}$, $U_1 = 2 \text{ h}^{-2}$, $a_1 = 35 \mu\text{m}$, $\rho_0 = 4.0 \times 10^{-3} \mu\text{m}^{-2}$. r_s , the radius of interaction between a cell and a surface particle, is chosen to be $r_s = 50 \mu\text{m}$, $\nu = 7 \text{ h}^{-1}$, $A_s = 2,400 \mu\text{m}^2/\text{h}^2$, $a_s = 8 \mu\text{m}$; the threshold value $q_i = \theta$ after reaching which the surface particle disappears is taken to be $\theta = 30 \mu\text{m}$. The values for the parameters of the random field are also varied. Contrary to ref. 10, we do not introduce any leader cell.

Data Fitting. We fit the distribution of cluster sizes using the least-square method for binned histograms and the maximum likelihood method (see *SI Appendix*, Fig. S10 and Tables S1 and S2 for more details).

ACKNOWLEDGMENTS. C.A.M.L.P. and S.S. thank the Aalto Science Institute visitor program of Aalto University where part of this work was completed. We acknowledge the computational resources provided by the Aalto University School of Science “Science-IT” project, as well as those provided by CSC-IT Center for Science Ltd. (Finland). O.C. and S.Z. acknowledge support from the Academy of Finland FiDiPro program, Project 13282993. S.Z. is supported by the European Research Council (ERC) Advanced Grant 291002 SIZEEFFECTS. M.N. and M.J.A. are supported by the Academy of Finland through its Centres of Excellence Programme (2012–2017) under Project 251748. G.S. is supported by Associazione Italiana per la Ricerca sul Cancro (AIRC) (Grant 10168), Worldwide Cancer Research (Grant AICR-14-0335), and the ERC (ERC Advanced Grant 268836).

- Tambe DT, et al. (2011) Collective cell guidance by cooperative intercellular forces. *Nat Mater* 10(6):469–475.
- Brugués A, et al. (2014) Forces driving epithelial wound healing. *Nat Phys* 10(9):683–690.
- Haeger A, Krause M, Wolf K, Friedl P (2014) Cell jamming: Collective invasion of mesenchymal tumor cells imposed by tissue confinement. *Biochim Biophys Acta* 1840(8):2386–2395.
- Lange JR, Fabry B (2013) Cell and tissue mechanics in cell migration. *Exp Cell Res* 319(16):2418–2423.
- Koch TM, Münster S, Bonakdar N, Butler JP, Fabry B (2012) 3D traction forces in cancer cell invasion. *PLoS One* 7(3):e33476.
- Sacks MS, Sun W (2003) Multiaxial mechanical behavior of biological materials. *Annu Rev Biomed Eng* 5:251–284.
- Vedula SRK, Ravasio A, Lim CT, Ladoux B (2013) Collective cell migration: A mechanistic perspective. *Physiology (Bethesda)* 28(6):370–379.
- Szabó B, et al. (2006) Phase transition in the collective migration of tissue cells: Experiment and model. *Phys Rev E Stat Nonlin Soft Matter Phys* 74(6 Pt 1):061908.
- Poujade M, et al. (2007) Collective migration of an epithelial monolayer in response to a model wound. *Proc Natl Acad Sci USA* 104(41):15988–15993.
- Sepúlveda N, et al. (2013) Collective cell motion in an epithelial sheet can be quantitatively described by a stochastic interacting particle model. *PLoS Comput Biol* 9(3):e1002944.
- Haga H, Irahara C, Kobayashi R, Nakagaki T, Kawabata K (2005) Collective movement of epithelial cells on a collagen gel substrate. *Biophys J* 88(3):2250–2256.
- Ng MR, Besser A, Danuser G, Brugge JS (2012) Substrate stiffness regulates cadherin-dependent collective migration through myosin-II contractility. *J Cell Biol* 199(3):545–563.
- Saez A, Ghibaudo M, Buguin A, Silberzan P, Ladoux B (2007) Rigidity-driven growth and migration of epithelial cells on microstructured anisotropic substrates. *Proc Natl Acad Sci USA* 104(20):8281–8286.
- Röttgermann PJF, Alberola AP, Rädler JO (2014) Cellular self-organization on microstructured surfaces. *Soft Matter* 10(14):2397–2404.
- Oakes PW, et al. (2009) Neutrophil morphology and migration are affected by substrate elasticity. *Blood* 114(7):1387–1395.
- Metzner C, et al. (2015) Superstatistical analysis and modelling of heterogeneous random walks. *Nat Commun* 6:7516.
- Serra-Picamal X, et al. (2012) Mechanical waves during tissue expansion. *Nat Phys* 8:628–634.
- Banerjee S, Utuje KJ, Marchetti MC (2015) Propagating stress waves during epithelial expansion. *Phys Rev Lett* 114(22):228101.
- Måløy KJ, Santucci S, Schmittbuhl J, Toussaint R (2006) Local waiting time fluctuations along a randomly pinned crack front. *Phys Rev Lett* 96(4):045501.
- Tallakstad KT, Toussaint R, Santucci S, Schmittbuhl J, Måløy KJ (2011) Local dynamics of a randomly pinned crack front during creep and forced propagation: An experimental study. *Phys Rev E Stat Nonlin Soft Matter Phys* 83(4 Pt 2):046108.
- Clotet X, Ortin J, Santucci S (2014) Disorder-induced capillary bursts control intermittency in slow imbibition. *Phys Rev Lett* 113(7):074501.
- Durin G, Zapperi S (2000) Scaling exponents for Barkhausen avalanches in polycrystalline and amorphous ferromagnets. *Phys Rev Lett* 84(20):4705–4708.
- Leschhorn H, Nattermann T, Stepanow S, Tang LH (1997) Driven interface depinning in a disordered medium. *Ann Phys* 6:1–34.
- Rosso A, Le Doussal P, Wiese KJ (2009) Avalanche-size distribution at the depinning transition: A numerical test of the theory. *Phys Rev B* 80:144204.
- Narayan O, Fisher DS (1992) Critical behavior of sliding charge-density waves in 4-epsilon dimensions. *Phys Rev B Condens Matter* 46(18):11520–11549.
- Chauve P, Le Doussal P, Wiese KJ (2001) Renormalization of pinned elastic systems: How does it work beyond one loop? *Phys Rev Lett* 86(9):1785–1788.
- Le Doussal P, Wiese KJ (2009) Size distributions of shocks and static avalanches from the functional renormalization group. *Phys Rev E Stat Nonlin Soft Matter Phys* 79(5 Pt 1):051106.
- Sethna JP, Dahmen KA, Myers CR (2001) Crackling noise. *Nature* 410(6825):242–250.
- Giampietro C, et al. (2015) The actin-binding protein EPS8 binds VE-cadherin and modulates YAP localization and signaling. *J Cell Biol* 211(6):1177–1192.
- Goodwin M, Yap AS (2004) Classical cadherin adhesion molecules: Coordinating cell adhesion, signaling and the cytoskeleton. *J Mol Histol* 35(8-9):839–844.
- Wheelock MJ, Johnson KR (2003) Cadherins as modulators of cellular phenotype. *Annu Rev Cell Dev Biol* 19:207–235.
- Giampietro C, et al. (2012) Overlapping and divergent signaling pathways of N-cadherin and VE-cadherin in endothelial cells. *Blood* 119(9):2159–2170.
- Clauset A, Shalizi CR, Newman ME (2009) Power-law distributions in empirical data. *SIAM Rev* 51:661–703.
- Angelini TE, et al. (2011) Glass-like dynamics of collective cell migration. *Proc Natl Acad Sci USA* 108(12):4714–4719.
- Park JA, et al. (2015) Unjamming and cell shape in the asthmatic airway epithelium. *Nat Mater* 14(10):1040–1048.
- Weber CA, et al. (2015) Random bursts determine dynamics of active filaments. *Proc Natl Acad Sci USA* 112(34):10703–10707.
- Ginelli F, et al. (2015) Intermittent collective dynamics emerge from conflicting imperatives in sheep herds. *Proc Natl Acad Sci USA* 112(41):12729–12734.
- Song C, Koren T, Wang P, Barabási AL (2010) Modelling the scaling properties of human mobility. *Nat Phys* 6:818–823.
- Balconi G, Spagnuolo R, Dejana E (2000) Development of endothelial cell lines from embryonic stem cells: A tool for studying genetically manipulated endothelial cells in vitro. *Arterioscler Thromb Vasc Biol* 20(6):1443–1451.
- Lampugnani MG, et al. (2002) VE-cadherin regulates endothelial actin activating Rac and increasing membrane association of Tiam. *Mol Biol Cell* 13(4):1175–1189.
- Thielicke W (2014) The flapping flight of birds: Analysis and application. PhD thesis (University of Groningen, Groningen, The Netherlands).
- Thielicke W, Stamhuis E (2014) PIVlab—towards user-friendly, affordable and accurate digital particle image velocimetry in MATLAB. *J Open Res Software* 2(1):e30.
- Johnston ST, Simpson MJ, McElwain DLS (2014) How much information can be obtained from tracking the position of the leading edge in a scratch assay? *J R Soc Interface* 11(97):20140325.
- Treloar KK, Simpson MJ (2013) Sensitivity of edge detection methods for quantifying cell migration assays. *PLoS One* 8(6):e67389.