

Retrospective Study

Cyclooxygenase-2 expression is associated with initiation of hepatocellular carcinoma, while prostaglandin receptor-1 expression predicts survival

Hao-Jie Yang, Jing-Hang Jiang, Yu-Ting Yang, Xiang-Di Yang, Zhe Guo, Ya-Peng Qi, Feng-Hua Zeng, Ke-Lan Zhang, Neng-Zhi Chen, Bang-De Xiang, Le-Qun Li

Hao-Jie Yang, Jing-Hang Jiang, Ya-Peng Qi, Bang-De Xiang, Le-Qun Li, Department of Hepatobiliary Surgery, Affiliated Tumor Hospital of Guangxi Medical University, Nanning 530021, Guangxi Zhuang Autonomous Region, China

Hao-Jie Yang, Feng-Hua Zeng, Ke-Lan Zhang, Neng-Zhi Chen, Department of General Surgery, The First People's Hospital of Changde, Changde 415000, Hunan Province, China

Jing-Hang Jiang, Department of General Surgery, Second People's Hospital of Jing Men, Jingmen 448000, Hubei Province, China

Yu-Ting Yang, Department of Chemotherapy, Affiliated Tumor Hospital of Guangxi Medical University, Nanning 530021, Guangxi Zhuang Autonomous Region, China

Xiang-Di Yang, Department of Oncology, Chenzhou No.1 People's Hospital, Chenzhou 423000, Hunan Province, China

Zhe Guo, Department of Thyroid and Breast Surgery, Central Hospital of Wuhan, Wuhan 430000, Hubei Province, China

Author contributions: Yang HJ, Jiang JH and Yang YT contributed equally to this work; Xiang BD and Li LQ contributed equally to this work; Xiang BD and Li LQ designed the research; Yang HJ, Jiang JH, Yang YT and Qi YP performed the research; Yang HJ, Yang YT, Zhang KL and Chen NZ evaluated the clinic records and performed the statistical analyses; Yang HJ wrote the manuscript; all authors have read and approved the final manuscript.

Supported by National Natural Science Foundation of China, No. 81260331; and Key Laboratory for High-Incidence Tumor Prevention and Treatment, Ministry of Education, No. GKE2015-ZZ05.

Institutional review board statement: The study was reviewed and approved by the Tumor Hospital of Guangxi Medical

University Institutional Review Board.

Informed consent statement: All study participants, or their legal guardian, provided informed written consent prior to study enrollment.

Conflict-of-interest statement: No potential conflicts of interest relevant to this article were reported.

Data sharing statement: Technical appendix, statistical code, and dataset are available from the corresponding author at cdsdyrmyy01@163.com. Participants gave informed consent for data sharing.

Open-Access: This article is an open-access article which was selected by an in-house editor and fully peer-reviewed by external reviewers. It is distributed in accordance with the Creative Commons Attribution Non Commercial (CC BY-NC 4.0) license, which permits others to distribute, remix, adapt, build upon this work non-commercially, and license their derivative works on different terms, provided the original work is properly cited and the use is non-commercial. See: <http://creativecommons.org/licenses/by-nc/4.0/>

Manuscript source: Unsolicited manuscript

Correspondence to: Dr. Bang-De Xiang, Professor, Department of Hepatobiliary Surgery, Affiliated Tumor Hospital of Guangxi Medical University, 71 Hedi Road, Nanning 530021, Guangxi Zhuang Autonomous Region, China. yhj894924067@163.com
Telephone: +86-771-5310045
Fax: +86-771-5312000

Received: June 15, 2016

Peer-review started: June 16, 2016

First decision: July 29, 2016

Revised: August 15, 2016

Accepted: August 30, 2016

Article in press: August 30, 2016

Published online: October 21, 2016

Abstract

AIM

To determine whether cyclooxygenase-2 (COX-2) and prostaglandin E1 receptor (EP₁) contribute to disease and whether they help predict prognosis.

METHODS

We retrospectively reviewed the records of 116 patients with hepatocellular carcinoma (HCC) who underwent surgery between 2008 and 2011 at our hospital. Expression of COX-2 and EP₁ receptor was examined by immunohistochemistry of formalin-fixed, paraffin-embedded tissues using polyclonal antibodies. Possible associations between immunohistochemical scores and survival were determined.

RESULTS

Factors associated with poor overall survival (OS) were alpha-fetoprotein > 400 ng/mL, tumor size \geq 5 cm, and high EP₁ receptor expression, but not high COX-2 expression. Disease-free survival was not significantly different between patients with low or high levels of COX-2 or EP₁. COX-2 immunoreactivity was significantly higher in well-differentiated HCC tissues (Edmondson grade I - II) than in poorly differentiated tissues (Edmondson grade III-IV) ($P = 0.003$). EP₁ receptor immunoreactivity was significantly higher in poorly differentiated tissue than in well-differentiated tissue ($P = 0.001$).

CONCLUSION

COX-2 expression appears to be linked to early HCC events (initiation), while EP₁ receptor expression may participate in tumor progression and predict survival.

Key words: Cyclooxygenase-2; Hepatocellular carcinoma; Liver resection; Prognosis; Prostaglandin E1 receptor

© **The Author(s) 2016.** Published by Baishideng Publishing Group Inc. All rights reserved.

Core tip: We retrospectively reviewed the records of 116 patients with hepatocellular carcinoma (HCC) who underwent surgery between 2008 and 2011 at our hospital. Our results suggest that the factors associated with poor overall survival were alpha-fetoprotein > 400 ng/mL, tumor size \geq 5 cm, and high prostaglandin E1 (EP₁) receptor expression, but not high cyclooxygenase-2 (COX-2) expression. Disease-free survival did not differ significantly between patients with low or high levels of COX-2 or EP₁. COX-2 immunoreactivity was significantly higher in well-differentiated HCC tissues (Edmondson grade I - II) than in poorly differentiated tissues (Edmondson grade III-IV) ($P = 0.003$). EP₁ receptor immunoreactivity was significantly higher in poorly differentiated tissue than in well-differentiated tissue ($P = 0.001$).

while prostaglandin receptor-1 expression predicts survival. *World J Gastroenterol* 2016; 22(39): 8798-8805 Available from: URL: <http://www.wjgnet.com/1007-9327/full/v22/i39/8798.htm> DOI: <http://dx.doi.org/10.3748/wjg.v22.i39.8798>

INTRODUCTION

Hepatocellular carcinoma (HCC) is one of the most aggressive tumors and the third most frequent cause of cancer-related death in the world^[1,2]. Although early diagnosis and treatment of HCC have improved substantially, prognosis remains unsatisfactory. HCC often involves highly malignant tumors that respond poorly or not at all to adjuvant systemic and local therapies. This highlights the need for new approaches to prevent and treat the disease.

Two molecules that may be involved in HCC at different stages, and that therefore may be useful for understanding the pathogenesis and progression of the disease, are cyclooxygenase-2 (COX-2) and prostaglandin E1 receptor (EP₁ receptor). These molecules have already been shown to play important roles in the onset of various cancers, including HCC^[3-9].

COX-2 inhibits apoptosis and increases proliferation in various type of tumors^[10-12]. It also triggers the production of vascular endothelial growth factor and activates metalloproteinases, substantially altering the tumor microenvironment of various cancers^[13-15]. The precise role of COX-2 in HCC remains unclear. Its expression decreases with extent of de-differentiation, and it does not appear to be associated with prognosis^[16-19]. It may be involved in HCC initiation, although direct evidence of this is lacking.

COX-2 catalyzes the conversion of arachidonic acid to prostaglandin E2, which promotes the progression of various types of tumors by binding to the G-protein-coupled EP₁ receptor. This led us to wonder whether EP₁ receptor expression might correlate with HCC progression and might even serve as a prognostic indicator of survival. In fact, in a mouse model of chemically induced colon cancer, administration of selective EP₁ receptor antagonists or knockout of the EP₁ receptor gene led to nearly 60% fewer precancerous lesions and a lower overall colon cancer incidence^[20,21]. EP₁ receptor antagonists have also been reported to block the progression of other types of tumor^[22,23], including HCC^[18,24].

To begin to clarify the potential roles of COX-2 and EP₁ receptor in HCC, and to determine the potential prognostic value of EP₁ receptor expression, we examined relative expression levels in tissues taken from HCC patients treated at our hospital, and correlated these levels with survival.

MATERIALS AND METHODS

This research was approved by the Ethics Committee of the Tumor Hospital of Guangxi Medical University,

Yang HJ, Jiang JH, Yang YT, Yang XD, Guo Z, Qi YP, Zeng FH, Zhang KL, Chen NZ, Xiang BD, Li LQ. Cyclooxygenase-2 expression is associated with initiation of hepatocellular carcinoma,

and patients provided informed consent for their data and tissue to be used for research purposes when they were admitted for treatment at our hospital.

Patients

This study was a retrospective analysis of HCC patients treated by curative hepatectomy at the Tumor Hospital of Guangxi Medical University between May 2008 and May 2011. To be included in our study, patients needed to have pathology-confirmed HCC and no history of antitumor therapies before hepatic resection. They also needed to satisfy the following curative hepatectomy criteria: (1) the tumor removed by hepatectomy was solitary; (2) the surgery margin was greater than 1 cm; (3) there was no residual tumor^[25], portal tumor thromboses^[26] or extrahepatic metastases based on post-surgical imaging; and (4) patients with high levels of alpha-fetoprotein (AFP) before surgery had normal levels within two months after surgery. Patients were excluded from the study if they had multiple tumors, extrahepatic metastases or macroscopic intrahepatic metastases adjacent to the primary tumor.

Follow-up

All HCC patients were followed up 1 mo after resection, then at 3-mo intervals in the first year, and then at 3-6 mo intervals thereafter until 60 mo after resection or death. During each follow-up visit, routine investigations including AFP level, liver function, chest X-ray, ultrasound, CT or MRI were conducted.

Immunohistochemistry of COX-2 and EP₁ receptor

Tumor specimens were fixed in 10% formalin, embedded in paraffin, cut into 3- μ m sections, deparaffinized with xylene and rehydrated by decreasing concentrations of ethanol. Antigen retrieval was performed for 10 min at 95 °C in citrate buffer (pH 6.0) in a microwave oven. Sections were immersed in 3% hydrogen peroxide for 15 min to block endogenous peroxidases, then incubated at 37 °C for 1 h with rabbit anti-human COX-2 polyclonal antibody (1:400; Abcam, United Kingdom) or rabbit anti-human EP₁ receptor polyclonal antibody (1:200; Abcam). The sections were rinsed in phosphate-buffered saline (PBS), incubated with biotinylated anti-rabbit immunoglobulin for 20 min at room temperature, and then rinsed again with PBS. The sections were incubated with anti-horseradish peroxidase conjugate for 10 min, rinsed with PBS, and incubated with diaminobenzidine for 10 min. Finally, the sections were counterstained with hematoxylin. As a negative control, tissues were treated as described above, except they were incubated with PBS instead of primary antibodies.

Immunohistochemical staining results were independently evaluated by three authors (Hao-Jie Yang, Zhe Guo and Yu-Ting Yang) and an experienced hepatopathologist (Chun-Jun Li) from the Department of Pathology of Guangxi Tumor Hospital. The per-

centages of cells positive for COX-2 or EP₁ receptor as well as relative staining intensity were determined. Percentages of positive cells were categorized as follows: 0 (no positive tumor cells), 1 (1%-25% positive), 2 (26%-50% positive), 3 (51%-75% positive), and 4 (76%-100% positive). Staining intensity was categorized as follows: 0 (no staining), 1 (weak, light yellow), 2 (moderate, yellow-brown), and 3 (strong, brown)^[27]. The scores for positive cell percentages and for staining intensity were multiplied together to yield a single immunohistochemical staining index from 0 to 12. Sections with an index of 0-5 were defined as showing low expression, while those with an index of 6-12 were defined as showing high expression.

Statistical analysis

All statistical analyses were performed using SPSS 19.0 (IBM, United States). Inter-group differences in categorical variables were assessed for significance using the χ^2 test; differences in continuous variables were assessed using the Mann-Whitney *U* test or *t*-test. OS and DFS were analyzed using the Kaplan-Meier method, and differences between curves were assessed for significance using the log-rank test. Multivariate Cox proportional hazards modeling was used to identify independent prognostic factors. The threshold for significance was defined as *P* < 0.05.

RESULTS

Patient characteristics

During the study, 748 patients with HCC were scheduled for hepatectomy in my center. Of these, 221 (29.5%) were excluded as they had received initial HCC treatment in other hospitals. Of the remaining 527 patients, 161 (30.5%) had solitary nodular tumors without portal tumor thromboses or extrahepatic metastases. We excluded 33 (20.4%) because they underwent only transarterial chemoembolization, local ablation therapy, or ethanol injection, and we excluded 12 (7.4%) as they lacked complete follow-up data. In total, 116 (72%) patients were included in the final analysis (93 men, 23 women) with a median age of 67 (range, 39-83) (Table 1). Immunohistochemistry showed low COX-2 expression in 62 patients (53.4%) and low EP₁ receptor expression in 73 (62.9%).

EP₁ receptor expression is a prognostic predictor of OS

OS was significantly lower among patients with high expression of EP₁ receptor than among those with low expression (Figure 1). OS did not differ significantly between patients with low or high COX-2 expression. DFS did not differ significantly between patients with low or high expression of COX-2 or EP₁ receptor.

The Cox hazards model showed 3 independent predictors of poor OS: tumor size \geq 5 cm, high expression of EP₁ receptor and AFP \geq 400 ng/mL (Table 2).

Table 1 Clinicopathological characteristics of 116 hepatocellular carcinoma patients treated by curative resection, stratified by COX-2 and EP₁ receptor expression

| Variable | COX-2 | | P value | EP ₁ receptor | | P value |
|-------------------------------------|----------------------------|-----------------------------|---------|----------------------------|-----------------------------|---------|
| | Low expression (n = 62) | High expression (n = 54) | | Low expression (n = 73) | High expression (n = 43) | |
| Gender, M/F | 48/14 | 45/9 | 0.426 | 60/13 | 33/10 | 0.477 |
| Age (yr) | 46.9 ± 10.8 | 47.9 ± 11.5 | 0.308 | 46.6 ± 11.1 | 47.3 ± 11.2 | 0.486 |
| HbsAg | | | | | | |
| Negative | 10 | 10 | 0.734 | 11 | 9 | 0.420 |
| Positive | 52 | 44 | | 62 | 34 | |
| Liver cirrhosis | | | | | | |
| No | 10 | 10 | 0.734 | 14 | 6 | 0.472 |
| Yes | 52 | 44 | | 59 | 37 | |
| AFP (ng/mL) | | | | | | |
| < 400 | 41 | 44 | 0.062 | 56 | 29 | 0.276 |
| ≥ 400 | 21 | 10 | | 17 | 14 | |
| Edmondson grade | | | | | | |
| I - II | 26 | 37 | 0.004 | 46 | 17 | 0.014 |
| III-IV | 36 | 17 | | 27 | 26 | |
| Child-Pugh class | | | | | | |
| A | 43 | 48 | 0.773 | 60 | 31 | 0.201 |
| B | 11 | 14 | | 13 | 12 | |
| Tumor capsule | | | | | | |
| Complete | 37 | 34 | 0.717 | 44 | 27 | 0.788 |
| Incomplete | 25 | 20 | | 29 | 16 | |
| Tumor size (cm) | 5.7 (3-7) | 6.6 (4-8.6) | 0.134 | 5 (3.5-7) | 6 (3.7-8.5) | 0.207 |
| Albumin (g/L) | 41.1 ± 4.4 | 40.4 ± 4.6 | 0.434 | 41.5 ± 4.3 | 40.2 ± 4.5 | 0.134 |
| Platelet count (10 ⁹ /L) | 167.9 (107.3-205.3) | 186.6 (136.3-230) | 0.136 | 178.9 (107.3-205.3) | 186.6 (136.3-230) | 0.833 |
| AST (U/L) | 56.6 (28.3-61) | 55.6 (27-60) | 0.924 | 38 (27-60) | 44 (30.5-61.5) | 0.737 |
| ALT (U/L) | 54.8 (28-56) | 62.7 (24.8-57.9) | 0.539 | 37(27-56) | 38(27-55) | 0.917 |
| Total bilirubin (μmol/L) | 14.08 (8.9-18.4) | 14.3 (9.4-15.3) | 0.912 | 11.9(9.35-16.6) | 13.4(9-17.7) | 0.580 |

AFP: Alpha-fetoprotein; ALT: Alanine aminotransferase; AST: Aspartate aminotransferase; HbsAg: Hepatitis B surface antigen.

Table 2 Multivariable analysis to identify predictors of overall survival in 116 hepatocellular carcinoma patients

| Factors | Hazard ratio | 95%CI | P value |
|-------------------------------------|--------------|-------------|---------|
| AFP ≥ 400 ng/mL | 1.691 | 1.094-2.614 | 0.018 |
| Incomplete tumor capsule | 0.979 | 0.659-1.454 | 0.915 |
| Tumor size ≥ 5 cm | 1.582 | 1.027-2.438 | 0.038 |
| Edmondson grade III-IV | 1.149 | 0.663-1.992 | 0.621 |
| EP ₁ receptor expression | 2.318 | 1.190-4.516 | 0.014 |

AFP: Alpha-fetoprotein.

COX-2 and EP₁ receptor expression correlates with tumor differentiation

COX-2 immunoreactivity was significantly higher in well-differentiated HCC tissues (Edmondson grade I - II) than in poorly differentiated tissues (Edmondson grade III-IV) (*P* = 0.003). EP₁ receptor immunoreactivity was significantly higher in poorly differentiated tissue than in well-differentiated tissue (Figure 2; *P* = 0.001). Figure 3 shows representative examples of different staining results in tissues of different histology grade.

DISCUSSION

HCC is one of the most aggressive tumors and has a poor prognosis. Some patients can undergo curative resection, but this treatment is associated with a high

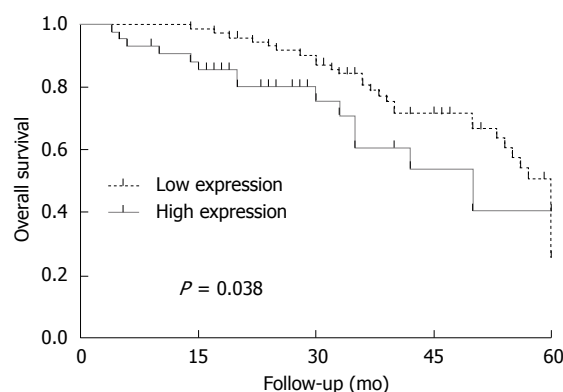


Figure 1 Overall survival of hepatocellular carcinoma patients stratified by low or high expression of EP₁ receptor.

rate of intrahepatic recurrence. Most patients with HCC are ineligible for resection because their disease has already reached an advanced stage by the time it is diagnosed. These patients are treated with local or systemic adjuvant modalities that provide only short-term regression, stabilization, or symptomatic control. Therefore, new therapeutic strategies are needed to improve long-term survival.

Our results indicate that the EP₁ receptor is involved in HCC progression, suggesting that it may be a reasonable therapeutic target. High expression of the EP₁ receptor was associated with poor prognosis in our

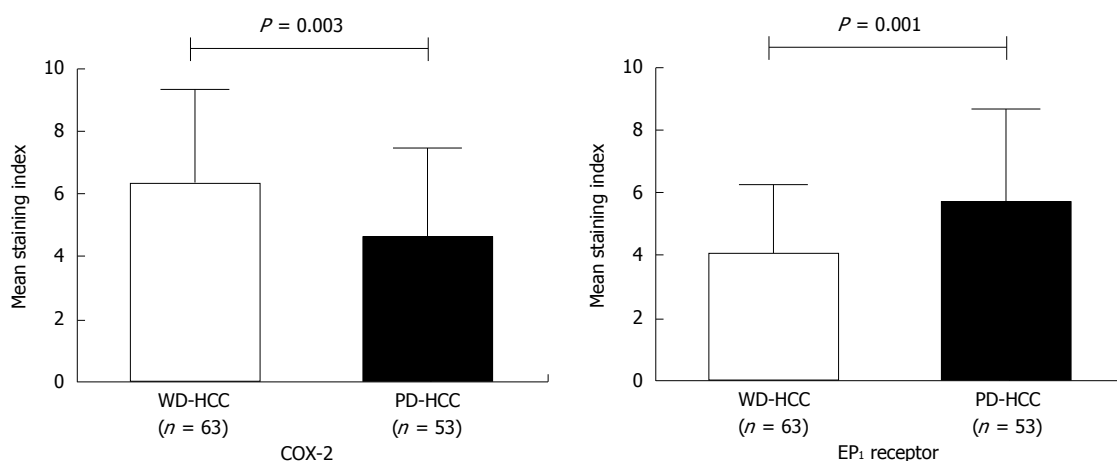
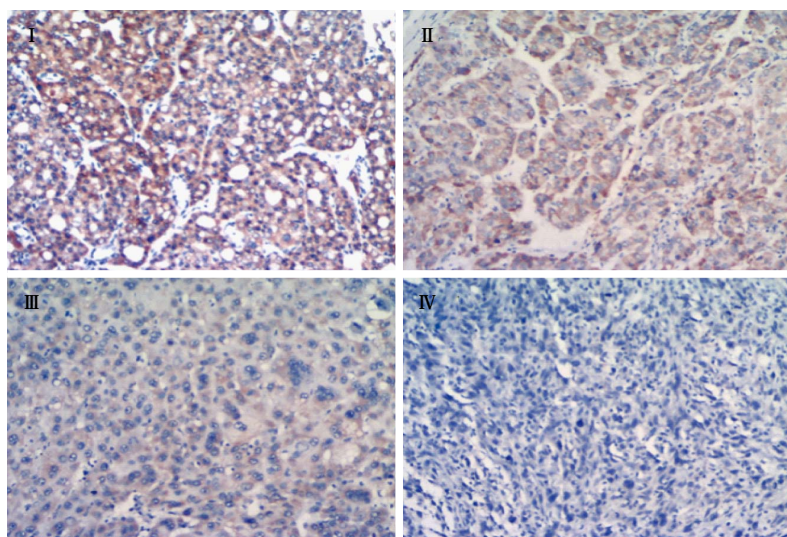


Figure 2 Cyclooxygenase-2 and prostaglandin E1 receptor immunoreactivity scores in hepatocellular carcinoma tissues at different histological grades. Cyclooxygenase-2 (COX-2) expression was higher in well-differentiated tissue (Edmondson grade I - II), while EP₁ receptor expression was higher in poorly-differentiated tissue (Edmondson grade III-IV). WD: Well-differentiated; PD: Poorly differentiated; HCC: Hepatocellular carcinoma.

COX-2



EP₁ receptor

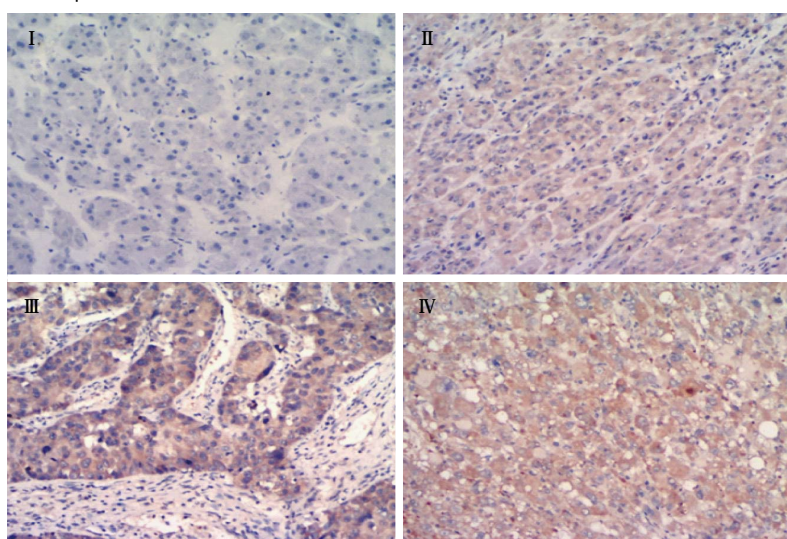


Figure 3 Representative micrographs showing different intensities of immunohistochemical stain against cyclooxygenase-2 and prostaglandin E1 receptor in tissues with different histological grades (Edmondson grade I -IV). Magnification, × 100. Cyclooxygenase-2 (COX-2) expression level decreased with lower grade of differentiation, while EP₁ receptor expression increased with lower grade of differentiation.

patients, and expression was significantly higher in poorly differentiated tissue than in well-differentiated tissue. The observed correlation between higher expression and poorer differentiation is consistent with a previous study^[18]. These results suggest that targeting the EP₁ receptor may provide a more selective approach to treating HCC than using COX inhibitors to block prostaglandin E₂ synthesis, which increases the risk of cardiovascular events^[28].

Although studies have associated COX-2 expression with differentiation, invasion and metastasis in HCC^[3,18,24], it has not been linked with survival. In the present study, we failed to find an association between COX-2 expression and survival when patients were dichotomized into groups with low or high expression. While it is possible that a more quantitative approach may identify associations between COX-2 levels and survival, we believe it is more likely that expression of COX-2 may be important only during initiation of HCC, whereas the EP₁ receptor, which is the downstream target of prostaglandin E₂ generated by COX-2, may be involved in disease progression. This may explain why we observed a different relationship between the expression of COX-2 and EP₁ receptor: patients with high expression of one showed low expression of the other. This may also explain why we found that expression of the EP₁ receptor, but not the COX-2 receptor, predicted OS in our cohort.

Several factors may help to explain why high expression of the EP₁ receptor predicts poor survival. The receptor enhances tumor cell proliferation, invasion and migration^[4,6,29,30], as well as adaptation to hypoxic conditions^[6,31]. The receptor has also been reported to inhibit immune function and promote tumor progression^[32]. The EP₁ receptor can even induce prostaglandin E₂ production by binding to the receptor of Fas ligand^[32-34].

This study has some limitations. Firstly, the authors used only an HE method, therefore more accurate and quantitative methods, such as Western blot, polymerase chain reaction *etc.*, should be applied in future studies. Secondly, it is known that other cytokines, except COX-2 and EP₁, have been reported to be strongly associated with HCC. These cytokines may be involved in different aspects of the pathogenesis of HCC and should be explored as a network pattern in future studies.

In conclusion, our results suggest that COX-2 expression correlates with an early event during the initiation of HCC, while EP₁ receptor expression plays an important role in tumor progression and predicts OS.

remains unsatisfactory. HCC often involves highly malignant tumors that respond poorly or not at all to adjuvant systemic and local therapies. This highlights the need for new approaches to prevent and treat the disease.

Research frontiers

Two molecules that may be involved in HCC at different stages, and that therefore may be useful for understanding the pathogenesis and progression of the disease, are cyclooxygenase-2 (COX-2) and prostaglandin E₁ receptor (EP₁ receptor). These molecules have already been shown to play important roles in the onset of various cancers, including HCC.

Innovations and breakthroughs

The authors retrospectively reviewed the records of 116 patients with HCC who underwent surgery between 2008 and 2011 at their hospital, and found that COX-2 expression appears to be linked to early HCC events (initiation), while EP₁ receptor expression may participate in tumor progression and predict survival.

Applications

These results suggest that targeting the EP₁ receptor may provide a more selective approach to treating HCC than using COX inhibitors to block prostaglandin E₂ synthesis, which increases the risk of cardiovascular events.

Terminology

Percentages of positive cells were categorized as follows: 0 (no positive tumor cells), 1 (1%-25% positive), 2 (26%-50% positive), 3 (51%-75% positive), and 4 (76%-100% positive). Staining intensity was categorized as follows: 0 (no staining), 1 (weak, light yellow), 2 (moderate, yellow-brown), and 3 (strong, brown). The scores for positive cell percentages and for staining intensity were multiplied together to yield a single immunohistochemical staining index from 0 to 12. Sections with an index of 0-5 were defined as showing low expression, while those with an index of 6-12 were defined as showing high expression.

Peer-review

The paper is a good study on COX-2 and EP₁ receptor immunoreactivity in patients with HCC. The investigators shown that COX-2 immunoreactivity was higher in well-differentiated HCC tissues and EP₁ receptor immunoreactivity was significantly higher in poorly differentiated tissue than in well-differentiated tissue.

REFERENCES

- 1 **Torre LA**, Bray F, Siegel RL, Ferlay J, Lortet-Tieulent J, Jemal A. Global cancer statistics, 2012. *CA Cancer J Clin* 2015; **65**: 87-108 [PMID: 25651787 DOI: 10.3322/caac.21262]
- 2 **Yang HJ**, Guo Z, Yang YT, Jiang JH, Qi YP, Li JJ, Li LQ, Xiang BD. Blood neutrophil-lymphocyte ratio predicts survival after hepatectomy for hepatocellular carcinoma: A propensity score-based analysis. *World J Gastroenterol* 2016; **22**: 5088-5095 [PMID: 27275101 DOI: 10.3748/wjg.v22.i21.5088]
- 3 **Guo Z**, Jiang JH, Zhang J, Yang HJ, Yang FQ, Qi YP, Zhong YP, Su J, Yang RR, Li LQ, Xiang BD. COX-2 Promotes Migration and Invasion by the Side Population of Cancer Stem Cell-Like Hepatocellular Carcinoma Cells. *Medicine* (Baltimore) 2015; **94**: e1806 [PMID: 26554780 DOI: 10.1097/MD.0000000000001806]
- 4 **Zhang H**, Cheng S, Zhang M, Ma X, Zhang L, Wang Y, Rong R, Ma J, Xia S, Du M, Shi F, Wang J, Yang Q, Bai X, Leng J. Prostaglandin E₂ promotes hepatocellular carcinoma cell invasion through upregulation of YB-1 protein expression. *Int J Oncol* 2014; **44**: 769-780 [PMID: 24378923 DOI: 10.3892/ijo.2013.2234]
- 5 **Jin J**, Chang Y, Wei W, He YF, Hu SS, Wang D, Wu YJ. Prostanoid EP₁ receptor as the target of (-)-epigallocatechin-3-gallate in suppressing hepatocellular carcinoma cells in vitro. *Acta Pharmacol Sin* 2012; **33**: 701-709 [PMID: 22553372 DOI: 10.1038/aps.2012.13]
- 6 **Kim SH**, Park YY, Kim SW, Lee JS, Wang D, DuBois RN. ANGPTL4 induction by prostaglandin E₂ under hypoxic

COMMENTS

Background

Hepatocellular carcinoma (HCC) is one of the most aggressive tumors and the third most frequent cause of cancer-related death in the world. Although early diagnosis and treatment of HCC have improved substantially, prognosis

- conditions promotes colorectal cancer progression. *Cancer Res* 2011; **71**: 7010-7020 [PMID: 21937683 DOI: 10.1158/0008-5472.CAN-11-1262]
- 7 **Bai XM**, Jiang H, Ding JX, Peng T, Ma J, Wang YH, Zhang L, Zhang H, Leng J. Prostaglandin E2 upregulates survivin expression via the EP1 receptor in hepatocellular carcinoma cells. *Life Sci* 2010; **86**: 214-223 [PMID: 20035770 DOI: 10.1016/j.lfs.2009.12.009]
 - 8 **Han C**, Michalopoulos GK, Wu T. Prostaglandin E2 receptor EP1 transactivates EGFR/MET receptor tyrosine kinases and enhances invasiveness in human hepatocellular carcinoma cells. *J Cell Physiol* 2006; **207**: 261-270 [PMID: 16331686 DOI: 10.1002/jcp.20560]
 - 9 **Hull MA**, Ko SC, Hawcroft G. Prostaglandin EP receptors: targets for treatment and prevention of colorectal cancer? *Mol Cancer Ther* 2004; **3**: 1031-1039 [PMID: 15299086]
 - 10 **Zhang P**, Luo HS, Li M, Tan SY. Artesunate inhibits the growth and induces apoptosis of human gastric cancer cells by downregulating COX-2. *Onco Targets Ther* 2015; **8**: 845-854 [PMID: 25945055 DOI: 10.2147/OTT.S81041]
 - 11 **Qian M**, Yang X, Li Z, Jiang C, Song D, Yan W, Liu T, Wu Z, Kong J, Wei H, Xiao J. P50-associated COX-2 extragenic RNA (PACER) overexpression promotes proliferation and metastasis of osteosarcoma cells by activating COX-2 gene. *Tumour Biol* 2016; **37**: 3879-3886 [PMID: 26476537 DOI: 10.1007/s13277-015-3838-8]
 - 12 **Lv P**, Zhang P, Li X, Chen Y. Micro ribonucleic acid (RNA)-101 inhibits cell proliferation and invasion of lung cancer by regulating cyclooxygenase-2. *Thorac Cancer* 2015; **6**: 778-784 [PMID: 26557918 DOI: 10.1111/1759-7714.12283]
 - 13 **Lee JH**, Piao MS, Choi JY, Yun SJ, Lee JB, Lee SC. Up-regulation of cyclooxygenase 2 and matrix metalloproteinases-2 and -9 in cutaneous squamous cell carcinoma: active role of inflammation and tissue remodeling in carcinogenesis. *Ann Dermatol* 2013; **25**: 145-151 [PMID: 23717003 DOI: 10.5021/ad.2013.25.2.145]
 - 14 **Mohammad MA**, Zeeneldin AA, Abd Elmageed ZY, Khalil EH, Mahdy SM, Sharada HM, Sharawy SK, Abdel-Wahab AH. Clinical relevance of cyclooxygenase-2 and matrix metalloproteinases (MMP-2 and MT1-MMP) in human breast cancer tissue. *Mol Cell Biochem* 2012; **366**: 269-275 [PMID: 22527932 DOI: 10.1007/s11010-012-1305-z]
 - 15 **Li Y**, Li S, Sun D, Song L, Liu X. Expression of 15-hydroxyprostaglandin dehydrogenase and cyclooxygenase-2 in non-small cell lung cancer: Correlations with angiogenesis and prognosis. *Oncol Lett* 2014; **8**: 1589-1594 [PMID: 25202373 DOI: 10.3892/ol.2014.2371]
 - 16 **Yang Y**, Zhu J, Gou H, Cao D, Jiang M, Hou M. Clinical significance of Cox-2, Survivin and Bcl-2 expression in hepatocellular carcinoma (HCC). *Med Oncol* 2011; **28**: 796-803 [PMID: 20401641 DOI: 10.1007/s12032-010-9519-y]
 - 17 **Yildirim Y**, Ozyilkcan O, Bilezikci B, Akcali Z, Haberal M. Lack of influence of cyclooxygenase-2 expression in hepatocellular carcinomas on patient survival. *Asian Pac J Cancer Prev* 2008; **9**: 295-298 [PMID: 18712978]
 - 18 **Breinig M**, Rieker R, Eiteneuer E, Wertenbruch T, Haugg AM, Helmke BM, Schirmacher P, Kern MA. Differential expression of E-prostanoid receptors in human hepatocellular carcinoma. *Int J Cancer* 2008; **122**: 547-557 [PMID: 17918156 DOI: 10.1002/ijc.23098]
 - 19 **Koga H**, Sakisaka S, Ohishi M, Kawaguchi T, Taniguchi E, Sasatomi K, Harada M, Kusaba T, Tanaka M, Kimura R, Nakashima Y, Nakashima O, Kojiro M, Kurohiji T, Sata M. Expression of cyclooxygenase-2 in human hepatocellular carcinoma: relevance to tumor dedifferentiation. *Hepatology* 1999; **29**: 688-696 [PMID: 10051469 DOI: 10.1002/hep.510290355]
 - 20 **Watanabe K**, Kawamori T, Nakatsugi S, Ohta T, Ohuchida S, Yamamoto H, Maruyama T, Kondo K, Narumiya S, Sugimura T, Wakabayashi K. Inhibitory effect of a prostaglandin E receptor subtype EP(1) selective antagonist, ONO-8713, on development of azoxymethane-induced aberrant crypt foci in mice. *Cancer Lett* 2000; **156**: 57-61 [PMID: 10840160 DOI: 10.1016/S0304-3835(00)00440-7]
 - 21 **Watanabe K**, Kawamori T, Nakatsugi S, Ohta T, Ohuchida S, Yamamoto H, Maruyama T, Kondo K, Ushikubi F, Narumiya S, Sugimura T, Wakabayashi K. Role of the prostaglandin E receptor subtype EP1 in colon carcinogenesis. *Cancer Res* 1999; **59**: 5093-5096 [PMID: 10537280]
 - 22 **Kawamori T**, Uchiya N, Nakatsugi S, Watanabe K, Ohuchida S, Yamamoto H, Maruyama T, Kondo K, Sugimura T, Wakabayashi K. Chemopreventive effects of ONO-8711, a selective prostaglandin E receptor EP(1) antagonist, on breast cancer development. *Carcinogenesis* 2001; **22**: 2001-2004 [PMID: 11751431 DOI: 10.1093/carcin/22.12.2001]
 - 23 **Tober KL**, Wilgus TA, Kusewitt DF, Thomas-Ahner JM, Maruyama T, Oberyszyn TM. Importance of the EP(1) receptor in cutaneous UVB-induced inflammation and tumor development. *J Invest Dermatol* 2006; **126**: 205-211 [PMID: 16417238 DOI: 10.1038/sj.jid.5700014]
 - 24 **Cusimano A**, Foderà D, Lampiasi N, Azzolina A, Notarbartolo M, Giannitrapani L, D'Alessandro N, Montalto G, Cervello M. Prostaglandin E2 receptors and COX enzymes in human hepatocellular carcinoma: role in the regulation of cell growth. *Ann N Y Acad Sci* 2009; **1155**: 300-308 [PMID: 19250221 DOI: 10.1111/j.1749-6632.2009.03701.x]
 - 25 **Fan ST**, Lo CM, Liu CL, Lam CM, Yuen WK, Yeung C, Wong J. Hepatectomy for hepatocellular carcinoma: toward zero hospital deaths. *Ann Surg* 1999; **229**: 322-330 [PMID: 10077043 DOI: 10.1097/0000658-199903000-00004]
 - 26 **Xia Y**, Qiu Y, Li J, Shi L, Wang K, Xi T, Shen F, Yan Z, Wu M. Adjuvant therapy with capecitabine postpones recurrence of hepatocellular carcinoma after curative resection: a randomized controlled trial. *Ann Surg Oncol* 2010; **17**: 3137-3144 [PMID: 20602260 DOI: 10.1245/s10434-010-1148-3]
 - 27 **Baker AM**, Bird D, Welti JC, Gourlaouen M, Lang G, Murray GI, Reynolds AR, Cox TR, Erler JT. Lysyl oxidase plays a critical role in endothelial cell stimulation to drive tumor angiogenesis. *Cancer Res* 2013; **73**: 583-594 [PMID: 23188504 DOI: 10.1158/0008-5472.CAN-12-2447]
 - 28 **Narumiya S**, FitzGerald GA. Genetic and pharmacological analysis of prostanoid receptor function. *J Clin Invest* 2001; **108**: 25-30 [PMID: 11435452 DOI: 10.1172/JCI13455]
 - 29 **Bai X**, Wang J, Zhang L, Ma J, Zhang H, Xia S, Zhang M, Ma X, Guo Y, Rong R, Cheng S, Shu W, Wang Y, Leng J. Prostaglandin E2 receptor EP1-mediated phosphorylation of focal adhesion kinase enhances cell adhesion and migration in hepatocellular carcinoma cells. *Int J Oncol* 2013; **42**: 1833-1841 [PMID: 23525457 DOI: 10.3892/ijo.2013.1859]
 - 30 **Yang SF**, Chen MK, Hsieh YS, Chung TT, Hsieh YH, Lin CW, Su JL, Tsai MH, Tang CH. Prostaglandin E2/EP1 signaling pathway enhances intercellular adhesion molecule 1 (ICAM-1) expression and cell motility in oral cancer cells. *J Biol Chem* 2010; **285**: 29808-29816 [PMID: 20647315 DOI: 10.1074/jbc.M110.108183]
 - 31 **Kaidi A**, Qualtrough D, Williams AC, Paraskeva C. Direct transcriptional up-regulation of cyclooxygenase-2 by hypoxia-inducible factor (HIF)-1 promotes colorectal tumor cell survival and enhances HIF-1 transcriptional activity during hypoxia. *Cancer Res* 2006; **66**: 6683-6691 [PMID: 16818642 DOI: 10.1158/0008-5472.CAN-06-0425]
 - 32 **O'Callaghan G**, Ryan A, Neary P, O'Mahony C, Shanahan F, Houston A. Targeting the EP1 receptor reduces Fas ligand expression and increases the antitumor immune response in an in vivo model of colon cancer. *Int J Cancer* 2013; **133**: 825-834 [PMID: 23390011 DOI: 10.1002/ijc.28076]
 - 33 **Zhang Y**, Liu Q, Zhang M, Yu Y, Liu X, Cao X. Fas signal promotes lung cancer growth by recruiting myeloid-derived suppressor cells via cancer cell-derived PGE2. *J Immunol*

2009; **182**: 3801-3808 [PMID: 19265159 DOI: 10.4049/jimmunol.0801548]

34 **O'Callaghan G**, Kelly J, Shanahan F, Houston A. Prostaglandin

E2 stimulates Fas ligand expression via the EP1 receptor in colon cancer cells. *Br J Cancer* 2008; **99**: 502-512 [PMID: 18648368 DOI: 10.1038/sj.bjc.6604490]

P- Reviewer: Alexopoulou A, de Oliveira CPMS, Mihaila RG
S- Editor: Gong ZM **L- Editor:** Webster JR **E- Editor:** Wang CH





Published by **Baishideng Publishing Group Inc**

8226 Regency Drive, Pleasanton, CA 94588, USA

Telephone: +1-925-223-8242

Fax: +1-925-223-8243

E-mail: bpgoffice@wjgnet.com

Help Desk: <http://www.wjgnet.com/esps/helpdesk.aspx>

<http://www.wjgnet.com>



ISSN 1007-9327

