


RESEARCH ARTICLE

Progesterone Alleviates Endometriosis via Inhibition of Uterine Cell Proliferation, Inflammation and Angiogenesis in an Immunocompetent Mouse Model

Yanfen Li¹[✉]^{aa}, Malavika K. Adur²^{ab}, Athilakshmi Kannan¹, Juanmahel Davila¹, Yuechao Zhao³, Romana A. Nowak², Milan K. Bagchi³, Indrani C. Bagchi¹, Quanxi Li¹*

1 Department of Comparative Biosciences, University of Illinois at Urbana-Champaign, Urbana, Illinois, United States of America, **2** Department of Animal Science, University of Illinois at Urbana-Champaign, Urbana, Illinois, United States of America, **3** Department of Molecular & Integrative Physiology, University of Illinois at Urbana-Champaign, Urbana, Illinois, United States of America

 These authors contributed equally to this work.

^{aa} Current address: Department of Bioengineering, University of Illinois at Urbana-Champaign, Urbana, Illinois, United States of America

^{ab} Current address: Department of Animal Sciences, Iowa State University, Ames, Iowa, United States of America

* quanxili@illinois.edu



CrossMark
click for updates

 OPEN ACCESS

Citation: Li Y, Adur MK, Kannan A, Davila J, Zhao Y, Nowak RA, et al. (2016) Progesterone Alleviates Endometriosis via Inhibition of Uterine Cell Proliferation, Inflammation and Angiogenesis in an Immunocompetent Mouse Model. PLoS ONE 11 (10): e0165347. doi:10.1371/journal.pone.0165347

Editor: Jae-Wook Jeong, Michigan State University, UNITED STATES

Received: September 9, 2016

Accepted: October 10, 2016

Published: October 24, 2016

Copyright: © 2016 Li et al. This is an open access article distributed under the terms of the [Creative Commons Attribution License](https://creativecommons.org/licenses/by/4.0/), which permits unrestricted use, distribution, and reproduction in any medium, provided the original author and source are credited.

Data Availability Statement: All relevant data are within the paper and its Supporting Information files.

Funding: The work was supported by R21 ES024198, <http://www.niehs.nih.gov/>, National Institute of Environmental Health Science, QL. The funder had a role in study design, data collection and analysis, decision to publish, and preparation of the manuscript. The work was also supported by U54 HD 055787, <https://www.nichd.nih.gov/Pages/index.aspx>, National Institute of Child Health and

Abstract

Endometriosis, defined as growth of the endometrial cells outside the uterus, is an inflammatory disorder that is associated with chronic pelvic pain and infertility in women of child-bearing age. Although the estrogen-dependence of endometriosis is well known, the role of progesterone in development of this disease remains poorly understood. In this study, we developed a disease model in which endometriosis was induced in the peritoneal cavities of immunocompetent female mice, and maintained with exogenous estrogen. The endometriosis-like lesions that were identified at a variety of ectopic locations exhibited abundant blood supply and extensive adhesions. Histological examination revealed that these lesions had a well-organized endometrial architecture and fibrotic response, resembling those recovered from clinical patients. In addition, an extensive proliferation, inflammatory response, and loss of estrogen receptor alpha (ER α) and progesterone receptor (PR) expression were also observed in these lesions. Interestingly, administration of progesterone before, but not after, lesion induction suppressed lesion expansion and maintained ER α and PR expressions. These progesterone-pretreated lesions exhibited attenuation in KI67, CD31, and pro-inflammatory cytokine expression as well as macrophage infiltration, indicating that progesterone ameliorates endometriosis progression by inhibiting cell proliferation, inflammation and neovascularization. Our studies further showed that suppression of global DNA methylation by application of DNA methyltransferase inhibitor to female mice bearing ectopic lesions restrained lesion expansion and restored ER α and PR expression in eutopic endometrium and ectopic lesions. These results indicate that epigenetic

Human Development. MKB and ICB. The funder had a role in study design, data collection and analysis. The work was also supported by U54 HD40093, <https://www.nichd.nih.gov/Pages/index.aspx>, National Institute of Child Health and Human Development. RAN. The funder had a role in study design, data collection and analysis, decision to publish.

Competing Interests: The authors have declared that no competing interests exist.

regulation of target gene expression via DNA methylation contributes, at least in part, to progesterone resistance in endometriosis.

Introduction

Endometriosis is a gynecological disorder defined as the growth of endometrial glands and stroma in extrauterine locations, primarily on the surfaces of the pelvic peritoneum, ovaries, and rectovaginal septum [1, 2]. It affects 6%–10% of women of reproductive age and the prevalence increases as high as 35%–50% in women experiencing chronic pelvic pain, and/or infertility that negatively affect their health and quality of life [3]. Although the etiology of endometriosis has not been defined, the widely accepted mechanism of the disease is the entry of the endometrial cell aggregates into the peritoneal cavity via the fallopian tubes, a process known as retrograde menstruation, where these endometrial fragments attach and invade into the peritoneal surfaces and grow into lesions at these ectopic sites [1, 2].

Prolonged exposure to estrogen (E_2) is a major endocrine risk factor for endometriosis establishment and progression. Several lines of evidence have linked endometriosis with excessive E_2 signaling in the ectopic tissues [4, 5]. The presence of an E_2 biosynthesis machinery, including elevated levels of 17β -hydroxysteroid dehydrogenase-1 and aromatase, which produces excess E_2 in ectopic lesions has been reported [6–8]. This local E_2 activates estrogen receptors (ER) to stimulate mitotic activity and inflammatory responses. Hence, aromatase inhibitors and certain ER modulators have been proposed to alleviate the clinical symptoms of this disease [9–12]. There are two different forms of the ER, usually referred to as $ER\alpha$ and $ER\beta$, and encoded by two separate genes, *Esr1* and *Esr2*, respectively. Early studies using $ER\alpha$ - or $ER\beta$ -null mice and selective estrogen receptor modulators revealed that both $ER\alpha$ and $ER\beta$ play essential roles in the establishment and development of ectopic lesions [9, 12, 13]. Interestingly, ample evidence indicates that $ER\beta$ is excessively expressed in the ectopic lesions when compared with normal endometrium [14].

In the normal endometrium, P_4 , via progesterone receptor (PR), counteracts E_2 -mediated action and exhibits anti-proliferative and anti-inflammatory roles [15, 16]. There are two PR isoforms, PRA and PRB, which are transcribed from a single gene (*Pgr*) with two alternative promoters. PRA and PRB differ only in that PRB contains an additional 164 amino acids at the N-terminus that are missing in PRA [17, 18]. Although the functional interaction between PR-A and PR-B is not required for reproductive activity [19], early studies indicated that loss of PR expression or perturbation of PR-mediated signaling is often associated with a hyperactive E_2 action in the endometrium and development of female reproductive diseases including endometriosis [15, 20–24]. Hence, the antagonistic nature of P_4 to E_2 in endometrium empowers progestin as the first line of hormonal therapy for clinical treatment of endometriosis [25–28]. Unfortunately, the therapeutic efficacy and the beneficial effect of P_4 on pathogenesis of endometriosis remain debatable. This is primarily due to the proliferative role of P_4 in endometrial stromal cells that constitute a major cellular component in the ectopic lesions [29]. In addition, the efficacy of this hormone is only limited to a subset of patients. Protein analysis of PRA and PRB expression in the eutopic endometrium and the ectopic lesions of patients showed lower levels of PRA and PRB expression in the diseased tissues when compared with the endometrium of patients without disease [30–33]. Using experimental animals as disease models, early studies showed that PR and PR-mediated signaling components are often intact in the early stages of endometriosis. With disease progression, the overall level of PR expression and its targets decline in the eutopic endometrium and the ectopic lesions [34]. However, it

remains unclear whether the P₄ resistance in the endometrium predisposes women to endometriosis, and what the driving factors are that down regulate PR signaling in these disease tissues.

Although it is variable, the length of time between the onset of pain symptoms and the surgical diagnosis of endometriosis is estimated between 8 to 11 years in women from the UK and the USA [35]. Studies relying on clinically obtained disease samples preclude investigation of the early events in pathogenesis of this disease. Studies in immunocompromised mice aimed to circumvent host immune rejection and establish human disease tissues in mice. To delineate the time course of disease progression and investigate the roles of steroid hormones in pathogenesis of endometriosis, we adopted a syngeneic mouse model of endometriosis that recapitulates the retrograde mensuration in humans. Our studies revealed that PR and PR-mediated signaling are progressively lost in the developing ectopic lesions. Treatment of host female mice with P₄ before endometriosis induction inhibits establishment and growth of ectopic lesions, primarily via suppression of proliferation, inflammation, and angiogenesis. Our studies further revealed that inhibition of DNA methylation in the host females ameliorates lesion growth and restored PR and PR-target gene expression indicating an involvement of epigenetic regulation in the pathogenesis of endometriosis.

Materials and Methods

Reagents

Progesterone (P8783) and 17- β -estradiol (E2758) were purchased from Sigma Chemical Co. (St. Louis, MO). 5-aza-2'-deoxycytidine (Decitabine, 3842) was purchased from Tocris Bioscience. Antibodies were purchased from Abcam (alpha smooth muscle actin/ α SMA, ab5694; C-C Motif Chemokine Receptor 7/CCR7, ab103404; Cluster of Differentiation 68/CD68, ab955; CD206/mannose receptor, ab64693; Forkhead box P3/FOXP3, ab20034; and Platelet endothelial cell adhesion molecule/PECAM-1/CD31, ab28364), BD PharMingen (Ki67, 550609), Cell Signaling (Vimentin/VIM, 5714S), Dako (PR, A0098), eBioscience (EGF-like module-containing mucin-like hormone receptor-like 1, EMR1 (F4/80), 12–4801; RAR-related orphan receptor gamma/ROR γ (t), 14–6988), Leica Biosystems (ER α , NCL-L-ER-6F11), Developmental Studies Hybridoma Bank (Cytokeratin 11/KRT11/CK11, TROMA-I-s; Jackson ImmunoResearch Laboratories (Alexa Fluor[®] 488 AffiniPure Donkey Anti-Rabbit IgG (H +L), Code: 711-545-152; Rhodamine Red[™]-X (RRX) AffiniPure Donkey Anti-Mouse IgG (H +L), 715-295-150), Novus Biologicals (Cysteine-rich angiogenic inducer 61/CYR61/CCN1, NB100-356), and Santa Cruz Biotechnology (Heart And Neural Crest Derivatives Expressed 2/dHand/HAND2, sc-9409), respectively (Table A in [S1 File](#)).

Ovariectomy and mouse model of endometriosis

All experiments involving animals were approved by the University of Illinois Institutional Animal Care and Use Committee and conducted in accordance with National Institutes of Health standards for the use and care of animals. Animals were maintained at the animal facility of College of Veterinary Medicine, University of Illinois at Urbana-Champaign in accordance with the applicable portions of the Animal Welfare Act and the guidelines prescribed in the DHHS publication, "Guide for the Care and Use of Laboratory Animals". CD-1 female mice were purchased from Charles River. Mice were kept in a standard light controlled animal room (12 h day light) at 23–25°C in polypropylene cages and provided with a rodent diet with minimal natural phytoestrogens and water *ad libitum*.

Ovariectomy: Adult mice (6–8 weeks of age) were anesthetized using a cocktail of Ketamine/Xylazine (87mg/kg; 15mg/kg) by intraperitoneal injection. The initial site for the incisions for mice was dorsal in the midline (approximately 1 cm), then by a similar incision lateral

to the midline through the muscle (0.5 cm). Following the muscle incision, ovaries were located and excised, followed by closure of the muscular incisions with sterile resorbable suture and skin incisions with wound clips. Buprenorphine (0.05 mg/kg, subcutaneously) was used as analgesia to minimize discomfort, distress, and pain before and after surgery. Wound clips were removed 10–14 days post-operation.

Mouse model of endometriosis: Donor female mice were primed with pregnant mare serum gonadotropin (PMSG) for 48 hours to stimulate growth of the uterus. At the time of tissue transplantation, uterine tissues were harvested and minced into smaller cell aggregates in warm Hank's buffered saline after careful peeling off myometrial layers. Syngeneic females served as recipients and were subjected to ovariectomy. 14 days after surgery, equal volumes of uterine cell suspension were transferred into the peritoneal cavities of the recipients at a ratio of 1 donor to 2 recipients. A gentle massage was given to disperse the tissue fragments. 2 weeks after surgery and 4 days before endometriosis induction, the recipients were injected subcutaneously with a physiological dose of E₂ (100ng/mouse), then once every 4 days, to maintain endometriosis progression. For P₄ pre-treatment experiments (Pre-P₄), P₄ (1mg/mouse) was administered along with E₂ beginning at 4 days before endometriosis induction. For P₄-post-treatment experiments (Post-P₄), P₄ was administered along with E₂ beginning at 4 days after endometriosis induction. For DNA methylation experiments, Decitabine (0.5 mg/kg/day) was injected intraperitoneally once every other day beginning at 4 days after endometriosis induction until tissue collection. Recipients were euthanized by different days after transplantation (n = 6 per treatment group), the number, location, and sizes of ectopic lesions were assessed under a dissecting microscope, followed by histological evaluation (Fig 1).

Mouse model of endometriosis

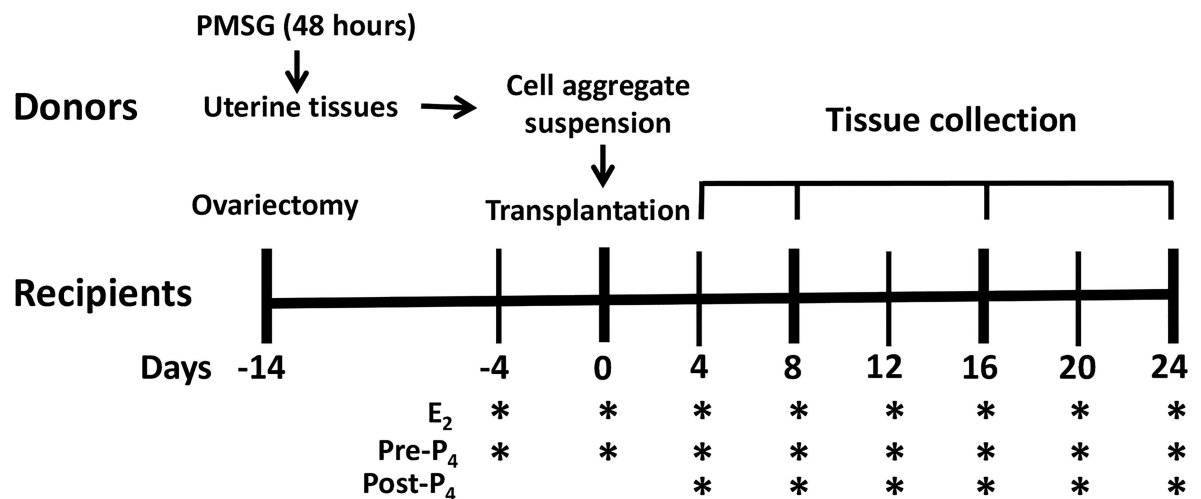


Fig 1. Immunocompetent mouse model of endometriosis. 6–8 weeks-old CD1 female mice were primed with PMSG for 48 hours. Uterine tissues were then harvested and minced into tiny cell aggregates after myometrial removal. Female mice with the same genetic background were subjected to ovariectomy and served as recipients. 2 weeks after surgery, equal volumes of uterine cell aggregate suspension were transferred into the peritoneal cavities of recipients. Endometriosis was maintained by subcutaneous administration of 100 ng of E₂ once every 4 days until tissue collection. For the studies of the role of P₄ in endometriosis, 1 mg of P₄ (pre-P₄) was administered along with E₂ beginning at 4 days before transplantation. For P₄-resistance experiments (Post-P₄), 1 mg of P₄ was administered along with E₂ beginning at 4 days after transplantation. The ectopic lesions were assessed under a dissecting microscope at different days after endometrial cell transplantation (n = 6 per treatment group).

doi:10.1371/journal.pone.0165347.g001

RNA isolation and quantitative real-time PCR analysis (qPCR)

Uterine tissue collection, RNA purification, cDNA synthesis, and qPCR were performed as described previously [36]. Primer sequences corresponding to specific target genes are listed in Table B in [S1 File](#). *36B4*, encoding an acidic ribosomal phosphoprotein, served as an internal control. The mean ΔCt was calculated from individual ΔCt values obtained from a minimum of three replicates. $\Delta\Delta\text{Ct}$ was calculated as the difference between the mean ΔCt values of the experimental and control samples. The fold change of gene expression in each sample relative to a control was computed as $2^{-\Delta\Delta\text{Ct}}$. The relative gene expression level was expressed as the average fold change \pm SEM from at least three independent experiments.

Histological evaluation

Sections of paraffin-embedded uterine tissues and ectopic lesions were deparaffinized, rehydrated in xylene and a series of graded ethanol, and subjected to histological evaluation. For Masson's trichrome staining, sections were first incubated with Weigert's hematoxylin solution, followed by bieberich scarlet solution, phosphomolybdic acid solution and aniline blue solution to stain nuclei, plasma, and collagen, respectively. Immunohistochemistry (IHC) and Immunofluorescence (IF) analysis were performed as described previously [22]. Briefly, sections were subjected to antigen retrieval with citrate buffer (pH 6.0), and then incubated with the corresponding primary antibodies, respectively. For IHC, sections were incubated with the horseradish peroxidase-labeled Avidin-Biotin system (Vector Laboratories, Burlingame, CA) and color was developed by incubation briefly with AEC chromogen (3-amino-9-ethylcarbazole) substrate. Sections were counterstained with hematoxylin and mounted. Red color deposits indicate the sites of immunostaining. For IF, after primary antibody incubation the sections were labeled with Alexa Fluor 488- or Rhodamine Red-conjugated donkey serum anti-mouse/rabbit IgG (H+L), respectively, and then mounted with medium containing DAPI. The sections were examined under the microscope (Olympus BX51), photographed. Images with the same magnification were then analyzed by ImageJ software (ImageJ 1.49, NIH, USA) as described previously [37]. The number of positive cells and the staining intensities were quantified by comparing the average number of positively stained cells to the total number of cells in the demarcated areas from three independent samples.

DNA methylation analysis

Genomic DNA samples were purified from the ectopic lesions and donor's endometrium following the protocol of Allprep DNA/RNA purification kit (Qiagen), then digested with Methylation-sensitive, Methylation-dependent, or both enzymes, respectively. Equal amounts of digested DNAs were then subjected to qPCR following the EpiTect Methyl II Assay protocol (Qiagen) using specific primers flanking the known/predicted "CG" islands in the promoter regions of mouse *Pgr* (EPMM111296-1A) and *Hoxa10* (EPMM109276-1A), respectively. The methylated or non-methylated lymph node genomic DNA (New England Biolabs) served as positive or negative controls. Levels of DNA methylation were determined by the average ΔCt values obtained from qPCR amplification of mock-digested, methylation-sensitive enzyme-digested, methylation-dependent enzyme-digested and double-digested DNA samples following product protocol. The fold induction of DNA methylation in the ectopic lesions (D16) compared to that in the donor's endometrium (D0) was determined.

Statistical analysis

All of the numerical values were obtained from at least three independent samples and were analyzed by One-way ANOVA followed by Dunnett's post hoc test when comparisons were

made between a control group and more than one experimental group, or by Student's *t*-test for single comparison (GraphPad Prism 5.0, GraphPad Software, Inc., San Diego, CA). Data are expressed as mean \pm SEM. Statistical significance is defined as $p < 0.05$.

Results

P₄ alleviates establishment and progression of ectopic lesions in mouse model of endometriosis

To investigate the molecular mechanisms underlying the time course of disease progression and steroid hormone regulation in pathogenesis of endometriosis, we adopted a syngeneic mouse model of endometriosis with minor modification. This model recapitulates the retrograde menstruation in human [13]. In this model, tiny endometrial cell aggregates, without the myometrium, were inoculated into the abdominal cavities of the syngeneic females to allow random attachment and growth (Fig 1). The recipient mice were ovariectomized, and then treated with E₂ or E₂ and P₄ subcutaneously once every 4 days beginning at 4 days before lesion induction (Pre-P₄ treatment). The number, location, and size of the ectopic lesions were assessed in these mice under a dissecting microscope, followed by histological evaluation. The endometrial implants were established as early as 24 hours after transplantation and eventually developed into endometriosis-like lesions at a variety of places, primarily on the surfaces of the parietal peritoneum, visceral peritoneum and mesentery covering the uterus, gut, liver, kidney, and intestines, and abdominal fat pads (Fig 2A and 2B). The volumes of these ectopic lesions expanded with the time of progression (Fig 2C). Interestingly, E₂-treated recipients had 2–5

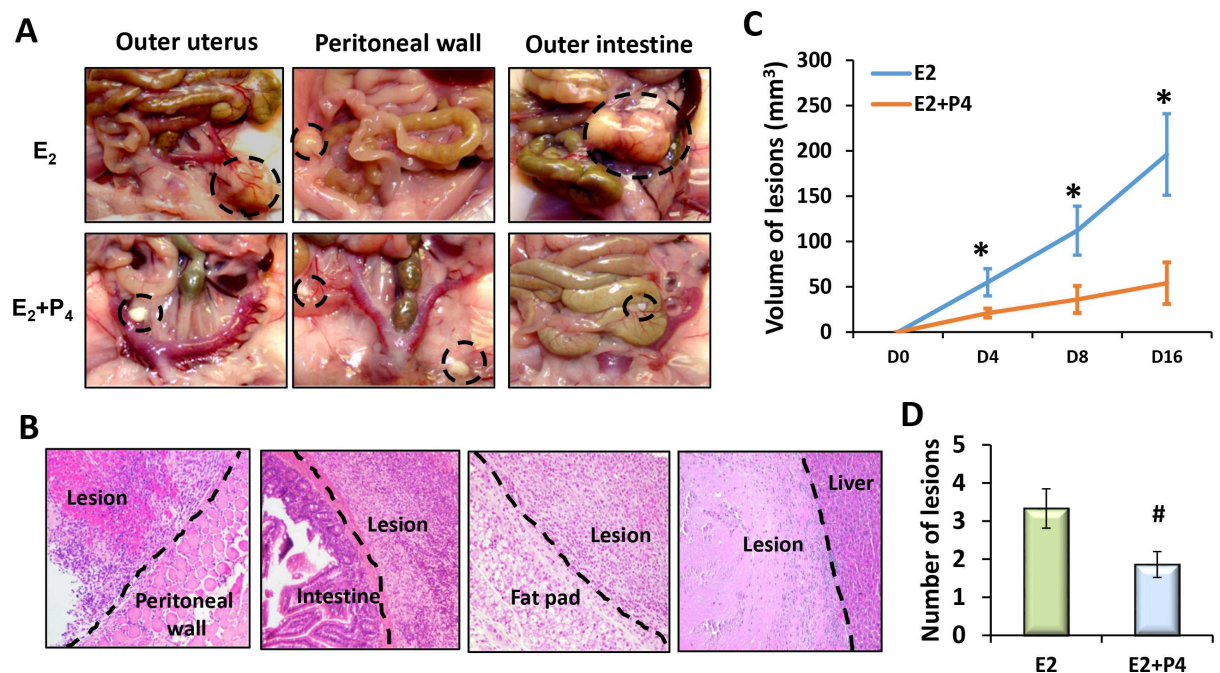


Fig 2. P₄ alleviates E₂-dependent establishment and growth of ectopic lesions. Ectopic lesions were established in the peritoneal cavities of immunocompetent female mice and treated with E₂ or P₄ along with E₂ as described in Fig 1 (N = 6). (A) Locations of ectopic lesions (Dashed circles). (B) Histology of ectopic lesions. Dashed lines indicate the contact sites of the ectopic lesions with adjacent peritoneum. Representative images of ectopic lesions harvested at four weeks after induction are shown (40X). (C) Time-course progression of ectopic lesions. The average volumes of the ectopic lesions at the indicated time points are shown. (D) The average numbers of ectopic lesions identified in each treatment group are shown. The numerical values were analyzed by One-way ANOVA followed by Dunnett's post hoc test and expressed as mean \pm SEM. Statistical significance is defined as #: $p < 0.05$, *: $p < 0.01$.

doi:10.1371/journal.pone.0165347.g002

large, light yellow color lesions with abundant blood vessels and extensive adhesions after four weeks of induction. In contrast, 1–3 small, white color and nonvascular lesions with loose attachment were seen in the E₂ plus P₄-treated group (Fig 2C and 2D). Hence, this syngeneic mouse model of endometriosis provides unique opportunity to study the steroid hormone-regulated molecular mechanisms that are associated with the establishment and progression of endometriosis.

P₄ restricts expansion of the ectopic lesions by inhibiting endometrial cell proliferation and neovascularization

To further characterize the ectopic lesions obtained from our mouse model of endometriosis, lesion sections were subjected to histological examination by H&E and trichrome staining, or IHC analysis using antibodies against epithelial and stromal cell biomarkers cytokeratin 11 (KRT11) or Vimentin (VIM), respectively. As shown in Fig 3A, these lesions had a well-organized stromal and glandular architecture with glandular cysts filled with inflammatory cells and luminal epithelial cell debris. In addition, an extensive fibrotic response was also observed in the stromal cell compartment as indicated by the staining of the collagen-rich connective tissue (Trichrome) and a myofibroblast and smooth muscle biomarker, α SMA [38].

Ectopic lesion expansion depends on endometrial cell proliferation and neovascularization. To investigate the role of P₄ in the developmental process of endometriosis, cell mitotic activity and angiogenesis were further compared in the ectopic lesions collected from host females treated with E₂ or P₄ along with E₂, respectively. As shown in Fig 3B, E₂-treated lesions exhibited extensive mitotic activity with large supporting blood vessels established at the periphery of lesions and the junctional region near the host peritoneum. Interestingly, in the E₂ plus P₄-treated lesions there was a significant reduction in uterine cell proliferation (KI67), perimeters of supporting blood vessels as well as expression of CD31 (an endothelial cell marker also known as PECAM-1) and CCN1/Cyr61, a critical angiogenic regulator in pathogenesis of endometriosis [39]. Collectively, these results indicated that P₄ attenuates E₂-dependent establishment and growth of ectopic lesions, most likely by inhibition of endometrial cell proliferation and angiogenesis.

P₄ suppresses E₂-dependent inflammatory responses in the ectopic lesions

Immune cell infiltration is a hallmark of endometriosis [40]. Macrophages are particularly interesting in this disease, primarily due to their abundance as well as scavenging activity of misplaced/damaged cells in the peritoneal cavity. Ample evidence exists to indicate that macrophage function can be polarized to a wide spectrum of phenotypes depending upon the inflammatory stimuli in the microenvironment [41]. The inflammatory phenotype M1 is mainly responsible for clearance of infectious pathogens and damaged/apoptotic cells by producing pro-inflammatory factors (e.g., IL-6, IL-1b, IL-8, NOS, PGE2 and TNF α) [41]. The anti-inflammatory/pro-angiogenic phenotype M2, however, is predominantly involved in immunosuppression and tissue repair by producing factors such as IGF1, TGF β , IL-10, and VEGF [41]. Early studies indicated that both macrophage phenotypes are present in the peritoneal fluid and the ectopic lesions of patients [42]. To investigate the impact of P₄ on the inflammatory responses in endometriosis, we first examined infiltration and activation of peritoneal macrophages in response to endometrial cells by IHC or IF analysis using antibodies against the pan-macrophage biomarker (F4/80), M1 (CCR7), or M2 (CD206), respectively [41]. As shown in S1 and S2 Figs, in response to endometrial cell stimulation the number of peritoneal cells increased rapidly, but equally, in both E₂ and E₂ plus P₄-treated female mice, then declined by day 16 and returned to basal levels by 24 days after lesion induction. When macrophage

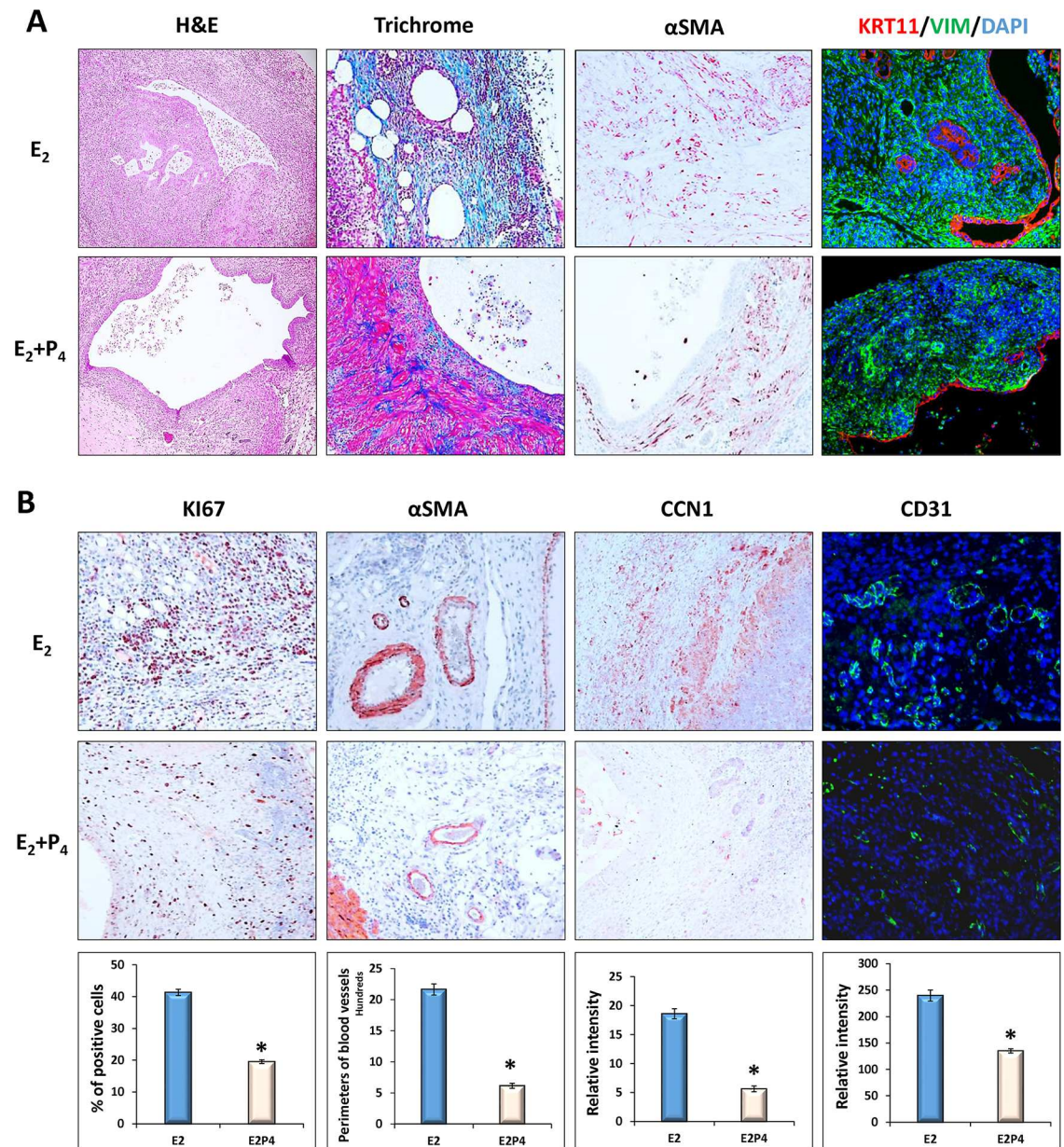


Fig 3. P₄ inhibits E₂-dependent cell proliferation and angiogenesis in ectopic lesions. Sections of the ectopic lesions collected from E₂ or E₂ plus P₄-treated recipients (D16, n = 6) were subjected to histological examination. (A) Representative images (20X) showing H&E and Trichrome staining, or IHC analysis using antibody against myofibroblast biomarker αSMA, uterine epithelial biomarker KRT11, or uterine stromal biomarker VIM, respectively. (B) Representative images (20X) showing IHC analysis using antibodies against cell proliferation biomarker KI67, smooth muscle biomarker αSMA, endothelial cells CD31, or an angiogenetic regulator CCN1, respectively. The numbers of KI67-positive cells, the perimeters of the supporting blood vessels, and the immunostaining intensities of CCN1 and CD31 were analyzed by ImageJ software. The numerical values were analyzed by One-way ANOVA followed by Dunnett's post hoc test and expressed as mean ± SEM. Statistical significance is defined as #: p < 0.05, *: p < 0.01.

doi:10.1371/journal.pone.0165347.g003

biomarkers were examined in these cells, we found that in the absence of endometrial cells more than half of the peritoneal cells were large, M2-like naïve resident macrophages that are positive for F4/80 and CD206 with a low level of CCR7 expression (CD206^{hi}/CCR7^{lo}/F4/80^{hi}). These cells, however, rapidly disappeared from the peritoneal cavity following endometrial

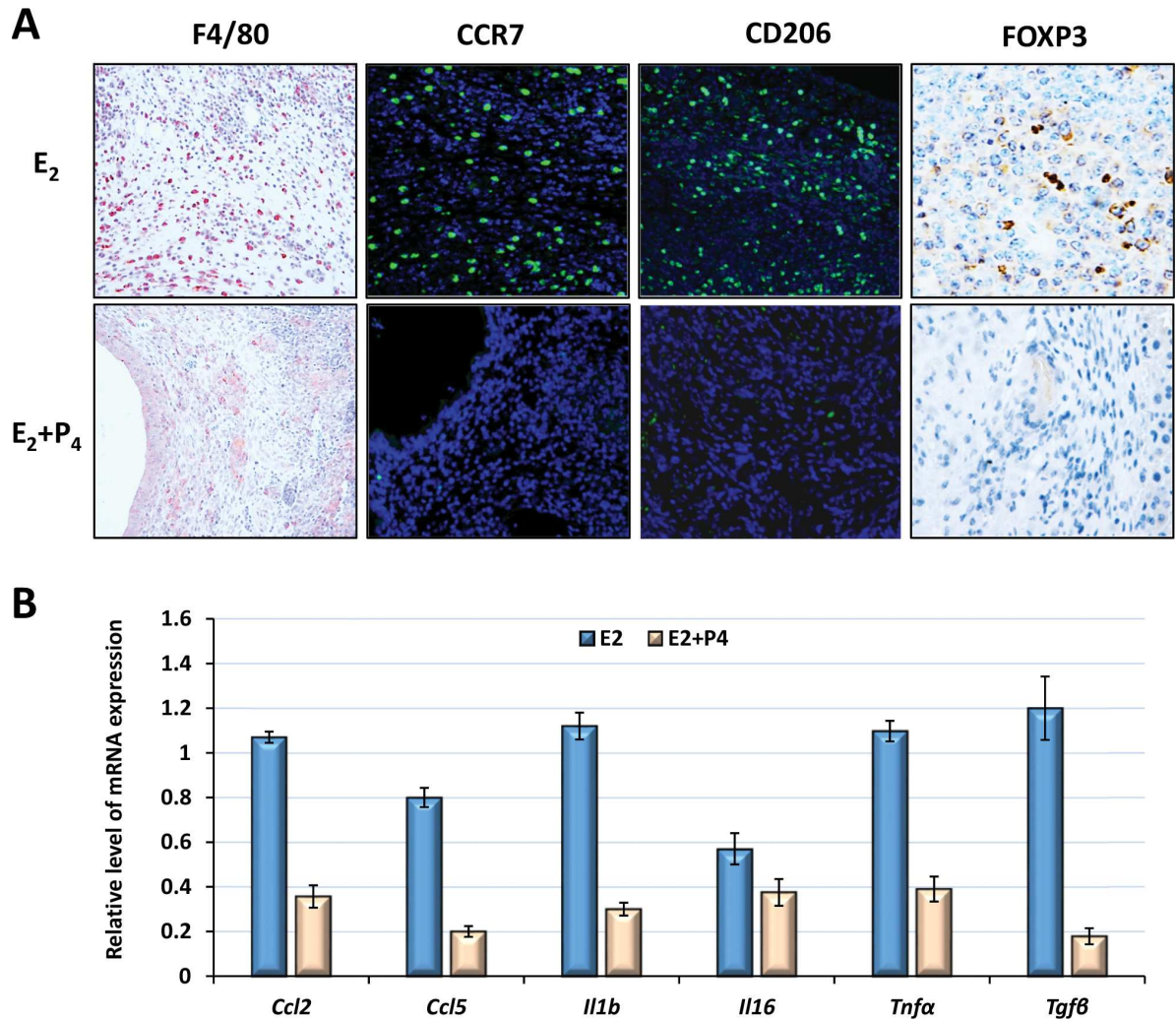


Fig 4. P₄ suppresses E₂-dependent inflammatory responses in the ectopic lesions. Ectopic lesions were harvested from E₂ or E₂ plus P₄-treated recipients (n = 6) by 16 days after induction. (A) Representative images (20X) showing IHC analysis using antibodies against pan-macrophage biomarker (F4/80), inflammatory M1 (CCR7), anti-inflammatory M2 (CD206) macrophages or Treg cell biomarker (FOXP3), respectively. (B) The relative level of mRNA expression corresponding to *Ccl2*, *Ccl5*, *Il1b*, *Il6*, *Tnfa*, and *Tgfb* was analyzed by qPCR after moralization to the internal control gene, *36B4*. The numerical values were analyzed by One-way ANOVA followed by Dunnett's post hoc test and expressed as mean ± SEM. Statistical significance is defined as #: p < 0.05, *: p < 0.01.

doi:10.1371/journal.pone.0165347.g004

inoculation, and were replaced with abundant small monocyte-derived inflammatory macrophages exhibiting a high level of CCR7 with low level of F4/80 and CD206 expression (CD206^{lo}/CCR7^{hi}/F4/80^{lo}). As disease progression continued, the CD206 level gradually increased and CCR7 level gradually decreased, until eventually all of the peritoneal macrophages acquired a F4/80^{hi}/CD206^{hi}/CCR7^{lo} phenotype. This phenomenon is similar to that observed during peritonitis indicating activation and M1 to M2 transition of macrophages during progression of endometriosis [43]. Surprising, there was no apparent difference in the numbers of M1 or M2 macrophages in E₂- and E₂ plus P₄-treated groups when examined 16 days after endometriosis induction (S2 Fig).

We next investigated activation and infiltration of macrophages in the ectopic lesions. As shown in Fig 4A, abundant cells that are positive for CD206, CCR7, or F4/80 infiltrated into

E₂-treated ectopic lesions (D8). We also examined expression of macrophage-derived pro-inflammatory cytokines (IL-6 and IL-1b), chemotactic factors (CCL2 and CCL5) and pro-angiogenic growth factors (TNF α and TGF β) in these lesions by qPCR analysis. Our results showed that all of these factors were rapidly induced in the ectopic lesions. While *Ccl2*, *Il6*, and *Il1b* expression peaked by 4 days after lesion induction, expression levels of *Ccl5*, *Tgfb*, and *Tnfa* were sustained until day 16 (S3 Fig). Interestingly, the number of activated macrophages and expression levels of the inflammatory factors diminished dramatically in the ectopic lesions in response to P₄ administration (Fig 4). We also examined expression of B cell surface marker CD45R, T Regulatory cell (Treg) marker FOXP3, and T helper 17 cell (Th17) marker ROR γ in these lesions. No apparent difference in B cell populations was observed between E₂ and E₂ plus P₄-treated ectopic lesions. Treg cell populations were decreased in response to P₄ stimulation, whereas Th17 cells were not observed in either group of lesions (Fig 4A). Collectively, these results indicate that P₄ regulates E₂-dependent inflammatory responses in endometriosis, primarily by suppressing production of the pro-inflammatory cytokines and infiltration of immune cells in the ectopic lesions.

Progressive loss of ER α /PR-mediated signaling in the ectopic lesions leads to resistance to P₄ therapy

Several lines of evidence now suggest that endometrial stromal cells, collected from the eutopic endometrium and the ectopic lesions of patients, exhibit insufficient response to P₄ stimulation. To investigate the time-course progression of PR-mediated signaling in endometriosis, the ectopic lesions collected from our mouse model of endometriosis were first subjected to qPCR to analyze gene expression levels of PR-signaling components. Interestingly, our results showed a progressive down-regulation of mRNA expression corresponding to *Esr1*, *Pgr*, and PGR-stromal targets *Hand2* and *Hoxa-10* with time of disease progression. In contrast, *Esr2* mRNA gradually increased in these lesions (S4 Fig). Immunostaining of these lesions also showed a sharp decline in the protein levels of ER α , PR and HAND2 when compared to the donor uterine tissues (Fig 5A, middle vs left panels). Interestingly, *Esr1*, *Pgr*, and *Hoxa10* expression were sustained in the ectopic lesions when P₄ was administered to the host females before lesion induction, while *Hand2* expression remained suppressed (Pre-P₄ in Fig 5A and 5B). In contrast, the P₄-mediated inhibitory effect was not seen in host females when P₄ treatment was started 4 days after lesion induction (Post-P₄ in Fig 5B and 5C). These results further support the notion that loss of PR-mediated signaling during disease progression contributes to the increased susceptibility to P₄ resistance in endometriosis patients.

Epigenetic regulation of PR-mediated signaling molecules via DNA methylation is involved in pathogenesis of endometriosis

It is well known that epigenetic regulation of target gene expression is involved in pathogenesis of many female reproductive diseases [44–50]. To explore the potential role of DNA methylation in the development of endometriosis, we utilized a DNA methyltransferase (DNMT) inhibitor Decitabine (DAC, 5-aza-2'-deoxycytidine), an analogue of deoxycytidine that can incorporate into DNA strands and cause DNA demethylation [51]. Endometriosis was induced and maintained in E₂-treated female mice. Beginning at day 4 after induction, host females were treated with either vehicle (VEH) or 0.5 mg/kg of DAC, intraperitoneally, once every other day, until tissue collection. Interestingly, DAC significantly inhibited growth of the ectopic lesions by 8 and 16 days after lesion induction (Fig 6A). In addition, administration of this inhibitor markedly increased expression levels of PR protein as well as mRNA corresponding to *Esr1*, *Pgr*, *Hand2*, and *Hoxa10*, but not for *Ccl5* and *Ptgs2* in the eutopic endometrium

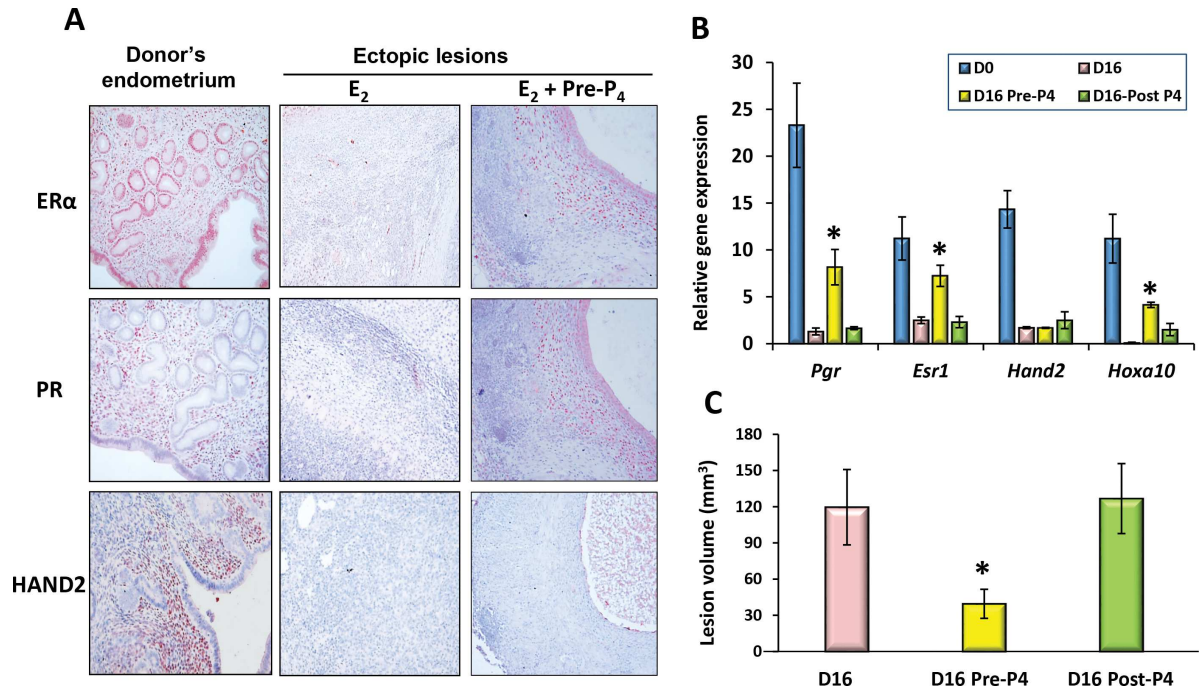


Fig 5. Loss of ER α /PR-mediated signaling contributes to P₄-resistance in this mouse model of endometriosis. Endometriosis was induced and maintained with E₂ as described in Fig 1. The host females were then treated with P₄ beginning at 4 days before (Pre-) or 4 days after (Post-) endometrial cell transplantation until tissue collection (n = 6). Donor uterine tissue (D0) and ectopic lesions were subjected to IHC analysis (A) for ER α , PR and HAND2 protein expression (20X) or qPCR analysis (B) to assess expression level of mRNA corresponding to *Esr1*, *Pgr*, *Hand2*, and *Hoxa10*, respectively. (C) Lesion volumes were quantitated by 16 days after induction. The numerical values were analyzed by One-way ANOVA followed by Dunnett's post hoc test and expressed as mean \pm SEM. Statistical significance is defined as #: p < 0.05, *: p < 0.01.

doi:10.1371/journal.pone.0165347.g005

and the ectopic lesions (Fig 6B and 6C). We further compared the levels of DNA methylation in promoter regions of *Hoxa10* and *Pgr* in the donor uterine tissues and the ectopic tissues (D16) treated with or without inhibitor. Equal amounts of the genomic DNA were digested with DNA methylation-dependent or sensitive enzymes, and the relative level of DNA methylation was determined by qPCR. Compared to the donor's endometrium, the levels of DNA methylation in the promoters of *Hoxa10* and *Pgr* were markedly enhanced in the ectopic lesions and this increase in DNA methylation was suppressed significantly by the DNMT inhibitor treatment (Fig 6D), indicating that DNA methylation is involved, at least in part, in the pathogenesis of endometriosis by affecting target gene expression.

Discussion

Progestin treatment is considered as one of the standard hormonal therapies for alleviating clinical symptoms and preventing recurrence of endometriosis [25–28]. However, the therapeutic efficacy of this treatment is limited to only a subset of patients, impeding routine clinical application. The P₄-resistance is primarily due to the low level of PR expression in the eutopic endometrium and the ectopic lesions of patients [30–34]. Consistently, in our mouse model of endometriosis we observed that expression of ER α , PR, and PR-stromal targets progressively declined in the diseased tissues, leading to unresponsiveness to the subsequent P₄ treatment. A similar observation was also reported in the nonhuman primate model of endometriosis in which expression levels of PR and its downstream targets were diminished in the eutopic endometrium and the ectopic lesions with disease progression [34]. Interestingly, P₄ is able to

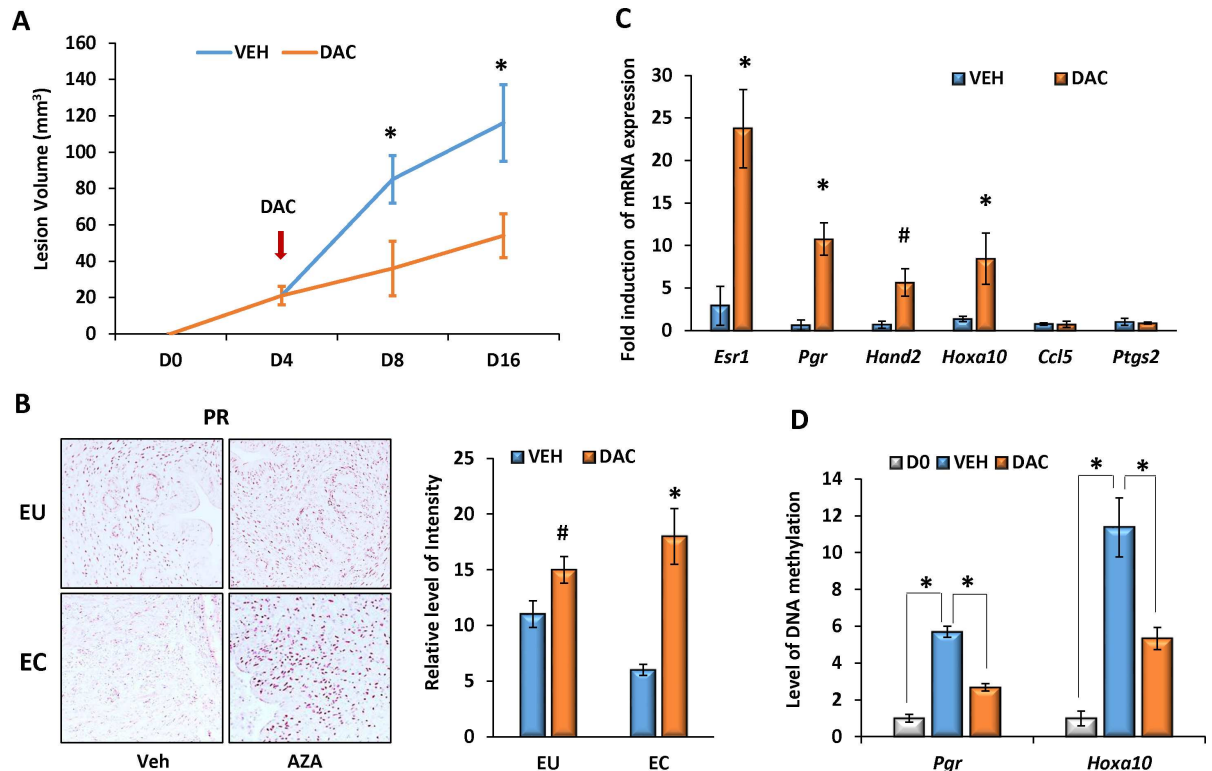


Fig 6. DNA methylation is involved in regulation of PR-signaling in endometriosis. Endometriosis was induced in female mice and maintained with E₂. Beginning at 4 days after induction, host females were treated with either vehicle (VEH) or 0.5 mg/kg of Decitabine (DAC) intraperitoneally, once every other day until tissues collection (n = 6). (A) Lesion volumes were measured at 8 and 16 days after induction. (B) The eutopic endometrium (EU) and the ectopic lesions (EC) were subjected to IHC analysis for PGR protein expression (20X). Representative images from each group are shown. The relative intensities of PR staining were analyzed by ImageJ software. (C) qPCR was employed to analyze relative levels of gene expression in the ectopic lesions (D16) treated with VEH or DAC. (D) DNA methylation levels of *Hoxa10* and *Pgr* promoters were assessed by qPCR following digestion of genomic DNA with methylation-specific enzymes. The numerical values were analyzed by One-way ANOVA followed by Dunnett's post hoc test and expressed as mean ± SEM. Statistical significance is defined as #: p < 0.05, *: p < 0.01.

doi:10.1371/journal.pone.0165347.g006

ameliorate lesion outgrowth and maintain ER α and PR expression when this hormone was administered early prior to lesion induction. These results clearly indicate that the loss of PR-mediated signaling components is a major causal factor for the P₄ resistance that exists in females with endometriosis. Hence, PR and PR-downstream targets may serve as useful biomarkers to predict efficacy of hormonal therapy and recurrence of endometriosis.

The underlying mechanisms involved in the regulation of the molecules that are critical for steroid responsiveness in endometriosis remain poorly understood. Early studies showed that the ER β expression level in endometriosis is >100 times higher than that in normal endometrial tissues [14]. Since ER β can bind directly to the ER α promoter region to repress ER α gene expression, it was believed that the high ratio of ER β -to-ER α in the ectopic endometrial cells would result in suppression of ER α /PR expression, thus contributing to P₄ resistance [14]. P₄ responsiveness may also be impaired by PR-coregulators and/or their downstream effectors, e.g. FKBP52, HIC-5/ARA55, KLF9/13, HOXA10, HAND2 or FOXO1, that play critical roles in PR-mediated endometrial functions, but are aberrantly expressed in eutopic endometrium and ectopic lesions of endometriosis [21, 23, 52, 53]. A recent study also showed that inhibition of the v-akt murine thymoma viral oncogene homolog (AKT)-mediated signaling pathway impaired development of endometriosis and restored PR and FOXO1 expression in ectopic lesions [54].

Ample evidence suggests that epigenetic regulation including DNA methylation is involved in pathogenesis of many female reproductive diseases including endometriosis [55–57]. Early studies showed that the promoter sequences of ER α and ER β (*Esr1* and *Esr2*), PRs (*Pgr-A* and *B*), as well as PR-targets *Hoxa10*, *Gata2/6*, and *Hand2* are susceptible to DNA methyltransferases, leading to an aberrant expression of these molecules in endometrial diseases [44–50]. Many laboratories are currently investigating genome-wide alteration of DNA methylation in clinically obtained samples [50, 58–60], however the primary drivers for these epigenetic aberrations remain unclear. Several lines of evidence have suggested that induction of pelvic endometriosis is sufficient to trigger long-lasting changes of target gene expression in the eutopic endometrium [47, 61]. Since chronic inflammation is closely involved in disease progression of endometriosis [40], and the inflammatory factors produced by the activated immune cells, notably macrophages and neutrophils, are important epigenetic modifiers that provoke widespread changes in the chromatin landscape of many cell types [62–67], it is plausible to envisage a mechanism in which paracrine inflammatory factors produced by ectopic endometrial cells and activated immune cells act on the eutopic endometrium and the ectopic lesions, to regulate target gene expression through epigenetic mechanisms. Indeed, our current studies showed that DNA methylation of the CG islands in *Pgr* and *Hoxa10* promoters was enhanced in the ectopic lesions in comparison to the normal endometrium. Inhibition of genome-wide DNA methylation in female mice restrained lesion expansion and partially restored target gene expression. These results indicate that epigenetic regulation of target gene expression via DNA methylation contributes, at least in part, to P₄-resistance in endometriosis.

E₂ and P₄ exert opposing effects in controlling the inflammatory responses in the endometrium. Specifically, E₂ enhances inflammation by directly promoting production of cytokines, including TNF α , TGF β , MMP7, RANTES, IL6, VEGFs, and activation of NF- κ B-mediated inflammatory pathways, whereas P₄ inhibits them [40, 68, 69]. Hence, a hyperactive E₂ action and sustained inflammatory response were frequently observed in the uterine tissues of female mice lacking PR or PR-mediated signaling molecules [20, 70]. In the ectopic lesions, both ER α and ER β contribute to the E₂-induced inflammatory responses. Recent studies by the Katzenellenbogen group showed that inhibition of ER β activity by ER β -selective antagonists in ectopic lesions suppressed inflammation and lesion growth [9]. Studies by O'Malley *et al* also showed that ER β could enhance inflammation and endometriosis progression by interacting with components of the cytoplasmic inflammasome to increase interleukin-1 β [12]. Although there is no evidence currently available to show that PR could potentially interact with ER β directly, it is possible that ER β may impair PR-mediated signaling in the ectopic lesions indirectly through SRC1, a PR coactivator [71]. In endometriosis, both inflammatory (M1) and anti-inflammatory (M2) macrophages are present in the peritoneal fluid and ectopic lesions. Adequate evidence suggests that both ER α and PR are present in peritoneal macrophages, and E₂ and P₄ could influence the inflammatory functions of these cells [72]. Interestingly, our studies revealed that P₄ exhibits minimal effects on infiltration and activation of peritoneal macrophage in response to endometrial cells, however we cannot exclude the possibility that P₄ exerts an immunomodulatory action by controlling production of pro-inflammatory factors and/or pro-angiogenic growth factors in these macrophages [73–75].

In summary, using a mouse model of endometriosis our studies unraveled a potential mechanism underlying P₄-resistance that is associated with the loss of PR-mediated signaling in endometriosis. Our studies have clearly shown that early P₄ treatment, when PR is present, could preserve steroid responsiveness and ameliorate E₂-dependent disease progression. On the other hand, P₄ has a minimal effect on disease progression when this hormone is administered along with E₂ at a later stage when PR is absent. Deciphering the molecular mechanisms by which PR-mediated signaling is aberrantly regulated in the eutopic endometrium and ectopic lesions of patients will provide mechanistic insights into the pathogenesis of

endometriosis, and lead to identification of novel prognostic biomarkers to predict the efficacy of hormonal therapy and recurrence of endometriosis.

Supporting Information

S1 Fig. Peritoneal macrophages are activated in this mouse model of endometriosis. Endometriosis was induced in immunocompetent host females and maintained with E_2 . Peritoneal cells were harvested at the indicated time points and subjected to double Immunofluorescent labeling for CD206 or CCR7 with F4/80, respectively. Representative images at each time point are shown (top panels, 20X). The percentages of positive cell numbers for CD206, CCR7, CCR7⁺/F4/80⁺, or CD206⁺/F4/80⁺ are shown (bottom panel). The numerical values were analyzed by One-way ANOVA followed by Dunnett's post hoc test and expressed as mean \pm SEM (n = 5). *p < 0.01 verse D0.
(TIF)

S2 Fig. P₄ exhibits minimal effects on peritoneal macrophages. Ectopic lesions were induced in E_2 -, or E_2 plus P_4 -treated immunocompetent host females. The total number of exuded peritoneal cells were counted (A) and subjected to double immunofluorescent labeling for CD206 or CCR7 with F4/80 (B). The average percentages of cell numbers for CCR7⁺/F4/80⁺ or CD206⁺/F4/80⁺ are shown. The numerical values were analyzed by One-way ANOVA followed by Dunnett's post hoc test and expressed as mean \pm SEM (n = 5). Statistical significance is defined as #: p < 0.05, *: p < 0.01 verse D0.
(TIF)

S3 Fig. Rapid induction of pro-inflammatory cytokines in ectopic lesions. Endometriosis was induced in immunocompetent female mice and maintained with E_2 . The ectopic lesions were harvested on days 0, 4, 8, and 16 after induction and subjected to qPCR analysis to assess the relative level of gene expression corresponding to *Ccl2*, *Ccl5*, *Il1b*, *Il6*, *Tnf α* , and *Tgf β* , respectively. The numerical values were analyzed by One-way ANOVA followed by Dunnett's post hoc test and expressed as mean \pm SEM (n = 6). Statistical significance is defined as #: p < 0.05, *: p < 0.01 verse D0.
(TIF)

S4 Fig. Progressive declines in expression of ER α /PR-mediated signaling components in the developing ectopic lesions. Endometriosis was induced in immunocompetent female mice and maintained with E_2 . The ectopic lesions were harvested on Days 0, 4, 8, and 16 after induction (N = 6) and subjected to qPCR analysis to assess the relative level of gene expression corresponding to *Esr1*, *Pgr*, *Hand2*, and *Hoxa10* (upper panel), or *Esr2* (Lower panel), respectively. The numerical values were analyzed by One-way ANOVA followed by Dunnett's post hoc test and expressed as mean \pm SEM. Statistical significance is defined as #: p < 0.05, *: p < 0.01 verse D0.
(TIF)

S1 File. Antibodies and Primers used in this study.
(PDF)

Acknowledgments

The authors thank Karen Doty for the technological assistance in histological evaluation.

Author Contributions

Conceptualization: QL.

Formal analysis: QL.
Funding acquisition: QL.
Investigation: YL MKA QL.
Methodology: YL MKA AK JD YZ.
Resources: QL ICB.
Supervision: QL ICB MKB RAN.
Validation: QL ICB RAN.
Visualization: QL.
Writing – original draft: QL.
Writing – review & editing: ICB RAN.

References

- Giudice LC. Clinical practice. Endometriosis. *The New England journal of medicine*. 2010; 362(25):2389–98. Epub 2010/06/25. doi: [10.1056/NEJMcp1000274](https://doi.org/10.1056/NEJMcp1000274) PMID: [20573927](https://pubmed.ncbi.nlm.nih.gov/20573927/); PubMed Central PMCID: [PMC3108065](https://pubmed.ncbi.nlm.nih.gov/PMC3108065/).
- Bulun SE. Endometriosis. *The New England journal of medicine*. 2009; 360(3):268–79. Epub 2009/01/16. doi: [10.1056/NEJMra0804690](https://doi.org/10.1056/NEJMra0804690) PMID: [19144942](https://pubmed.ncbi.nlm.nih.gov/19144942/).
- Moradi M, Parker M, Sneddon A, Lopez V, Ellwood D. Impact of endometriosis on women's lives: a qualitative study. *BMC women's health*. 2014; 14:123. Epub 2014/10/05. doi: [10.1186/1472-6874-14-123](https://doi.org/10.1186/1472-6874-14-123) PMID: [25280500](https://pubmed.ncbi.nlm.nih.gov/25280500/); PubMed Central PMCID: [PMC4287196](https://pubmed.ncbi.nlm.nih.gov/PMC4287196/).
- Dizerega GS, Barber DL, Hodgen GD. Endometriosis: role of ovarian steroids in initiation, maintenance, and suppression. *Fertility and sterility*. 1980; 33(6):649–53. Epub 1980/06/01. PMID: [6769717](https://pubmed.ncbi.nlm.nih.gov/6769717/).
- Kitawaki J, Kado N, Ishihara H, Koshiba H, Kitaoka Y, Honjo H. Endometriosis: the pathophysiology as an estrogen-dependent disease. *The Journal of steroid biochemistry and molecular biology*. 2002; 83(1–5):149–55. Epub 2003/03/26. PMID: [12650711](https://pubmed.ncbi.nlm.nih.gov/12650711/).
- Acien P, Velasco I, Gutierrez M, Martinez-Beltran M. Aromatase expression in endometriotic tissues and its relationship to clinical and analytical findings. *Fertility and sterility*. 2007; 88(1):32–8. Epub 2007/03/06. doi: [10.1016/j.fertnstert.2006.11.188](https://doi.org/10.1016/j.fertnstert.2006.11.188) PMID: [17336977](https://pubmed.ncbi.nlm.nih.gov/17336977/).
- Delvoux B, Groothuis P, D'Hooghe T, Kyama C, Dunselman G, Romano A. Increased production of 17beta-estradiol in endometriosis lesions is the result of impaired metabolism. *The Journal of clinical endocrinology and metabolism*. 2009; 94(3):876–83. Epub 2008/12/18. doi: [10.1210/jc.2008-2218](https://doi.org/10.1210/jc.2008-2218) PMID: [19088158](https://pubmed.ncbi.nlm.nih.gov/19088158/).
- Bulun SE, Cheng YH, Yin P, Imir G, Utsunomiya H, Attar E, et al. Progesterone resistance in endometriosis: link to failure to metabolize estradiol. *Molecular and cellular endocrinology*. 2006; 248(1–2):94–103. Epub 2006/01/13. doi: [10.1016/j.mce.2005.11.041](https://doi.org/10.1016/j.mce.2005.11.041) PMID: [16406281](https://pubmed.ncbi.nlm.nih.gov/16406281/).
- Zhao Y, Gong P, Chen Y, Nwachukwu JC, Srinivasan S, Ko C, et al. Dual suppression of estrogenic and inflammatory activities for targeting of endometriosis. *Science translational medicine*. 2015; 7(271):271ra9. Epub 2015/01/23. doi: [10.1126/scitranslmed.3010626](https://doi.org/10.1126/scitranslmed.3010626) PMID: [25609169](https://pubmed.ncbi.nlm.nih.gov/25609169/).
- Ferrero S, Remorgida V, Maganza C, Venturini PL, Salvatore S, Papaleo E, et al. Aromatase and endometriosis: estrogens play a role. *Annals of the New York Academy of Sciences*. 2014; 1317:17–23. Epub 2014/04/18. doi: [10.1111/nyas.12411](https://doi.org/10.1111/nyas.12411) PMID: [24738993](https://pubmed.ncbi.nlm.nih.gov/24738993/).
- Harris HA, Bruner-Tran KL, Zhang X, Osteen KG, Lyttle CR. A selective estrogen receptor-beta agonist causes lesion regression in an experimentally induced model of endometriosis. *Hum Reprod*. 2005; 20(4):936–41. Epub 2004/12/25. doi: [10.1093/humrep/deh711](https://doi.org/10.1093/humrep/deh711) PMID: [15618247](https://pubmed.ncbi.nlm.nih.gov/15618247/).
- Han SJ, Jung SY, Wu SP, Hawkins SM, Park MJ, Kyo S, et al. Estrogen Receptor beta Modulates Apoptosis Complexes and the Inflammasome to Drive the Pathogenesis of Endometriosis. *Cell*. 2015; 163(4):960–74. Epub 2015/11/07. doi: [10.1016/j.cell.2015.10.034](https://doi.org/10.1016/j.cell.2015.10.034) PMID: [26544941](https://pubmed.ncbi.nlm.nih.gov/26544941/); PubMed Central PMCID: [PMC4640214](https://pubmed.ncbi.nlm.nih.gov/PMC4640214/).
- Burns KA, Rodriguez KF, Hewitt SC, Janardhan KS, Young SL, Korach KS. Role of estrogen receptor signaling required for endometriosis-like lesion establishment in a mouse model. *Endocrinology*. 2012;

- 153(8):3960–71. Epub 2012/06/16. doi: [10.1210/en.2012-1294](https://doi.org/10.1210/en.2012-1294) PMID: [22700766](https://pubmed.ncbi.nlm.nih.gov/22700766/); PubMed Central PMCID: [PMC3404357](https://pubmed.ncbi.nlm.nih.gov/PMC3404357/).
14. Bulun SE, Monsavais D, Pavone ME, Dyson M, Xue Q, Attar E, et al. Role of estrogen receptor-beta in endometriosis. *Seminars in reproductive medicine*. 2012; 30(1):39–45. Epub 2012/01/25. doi: [10.1055/s-0031-1299596](https://doi.org/10.1055/s-0031-1299596) PMID: [22271293](https://pubmed.ncbi.nlm.nih.gov/22271293/); PubMed Central PMCID: [PMC4034571](https://pubmed.ncbi.nlm.nih.gov/PMC4034571/).
 15. Fang Z, Yang S, Lydon JP, DeMayo F, Tamura M, Gurates B, et al. Intact progesterone receptors are essential to counteract the proliferative effect of estradiol in a genetically engineered mouse model of endometriosis. *Fertility and sterility*. 2004; 82(3):673–8. Epub 2004/09/18. doi: [10.1016/j.fertnstert.2004.01.048](https://doi.org/10.1016/j.fertnstert.2004.01.048) PMID: [15374713](https://pubmed.ncbi.nlm.nih.gov/15374713/).
 16. Cooke PS, Buchanan DL, Young P, Setiawan T, Brody J, Korach KS, et al. Stromal estrogen receptors mediate mitogenic effects of estradiol on uterine epithelium. *Proceedings of the National Academy of Sciences of the United States of America*. 1997; 94(12):6535–40. Epub 1997/06/10. PMID: [9177253](https://pubmed.ncbi.nlm.nih.gov/9177253/); PubMed Central PMCID: [PMC21085](https://pubmed.ncbi.nlm.nih.gov/PMC21085/).
 17. Kastner P, Krust A, Turcotte B, Stropp U, Tora L, Gronemeyer H, et al. Two distinct estrogen-regulated promoters generate transcripts encoding the two functionally different human progesterone receptor forms A and B. *The EMBO journal*. 1990; 9(5):1603–14. Epub 1990/05/01. PMID: [2328727](https://pubmed.ncbi.nlm.nih.gov/2328727/); PubMed Central PMCID: [PMC551856](https://pubmed.ncbi.nlm.nih.gov/PMC551856/).
 18. Conneely OM, Kettelberger DM, Tsai MJ, Schrader WT, O'Malley BW. The chicken progesterone receptor A and B isoforms are products of an alternate translation initiation event. *The Journal of biological chemistry*. 1989; 264(24):14062–4. Epub 1989/08/25. PMID: [2760059](https://pubmed.ncbi.nlm.nih.gov/2760059/).
 19. Mulac-Jericevic B, Lydon JP, DeMayo FJ, Conneely OM. Defective mammary gland morphogenesis in mice lacking the progesterone receptor B isoform. *Proceedings of the National Academy of Sciences of the United States of America*. 2003; 100(17):9744–9. Epub 2003/08/05. doi: [10.1073/pnas.1732707100](https://doi.org/10.1073/pnas.1732707100) PMID: [12897242](https://pubmed.ncbi.nlm.nih.gov/12897242/); PubMed Central PMCID: [PMC187836](https://pubmed.ncbi.nlm.nih.gov/PMC187836/).
 20. Lydon JP, DeMayo FJ, Funk CR, Mani SK, Hughes AR, Montgomery CA Jr., et al. Mice lacking progesterone receptor exhibit pleiotropic reproductive abnormalities. *Genes & development*. 1995; 9(18):2266–78. PMID: [7557380](https://pubmed.ncbi.nlm.nih.gov/7557380/).
 21. Hirota Y, Tranguch S, Daikoku T, Hasegawa A, Osuga Y, Taketani Y, et al. Deficiency of immunophilin FKBP52 promotes endometriosis. *The American journal of pathology*. 2008; 173(6):1747–57. Epub 2008/11/08. doi: [10.2353/ajpath.2008.080527](https://doi.org/10.2353/ajpath.2008.080527) PMID: [18988805](https://pubmed.ncbi.nlm.nih.gov/18988805/); PubMed Central PMCID: [PMC2626386](https://pubmed.ncbi.nlm.nih.gov/PMC2626386/).
 22. Li Q, Kannan A, DeMayo FJ, Lydon JP, Cooke PS, Yamagishi H, et al. The antiproliferative action of progesterone in uterine epithelium is mediated by Hand2. *Science*. 2011; 331(6019):912–6. Epub 2011/02/19. 331/6019/912 [pii] doi: [10.1126/science.1197454](https://doi.org/10.1126/science.1197454) PMID: [21330545](https://pubmed.ncbi.nlm.nih.gov/21330545/).
 23. Heard ME, Simmons CD, Simmen FA, Simmen RC. Kruppel-like factor 9 deficiency in uterine endometrial cells promotes ectopic lesion establishment associated with activated notch and hedgehog signaling in a mouse model of endometriosis. *Endocrinology*. 2014; 155(4):1532–46. Epub 2014/01/31. doi: [10.1210/en.2013-1947](https://doi.org/10.1210/en.2013-1947) PMID: [24476135](https://pubmed.ncbi.nlm.nih.gov/24476135/); PubMed Central PMCID: [PMC3959595](https://pubmed.ncbi.nlm.nih.gov/PMC3959595/).
 24. Tangen IL, Werner HM, Berg A, Halle MK, Kusonmano K, Trovik J, et al. Loss of progesterone receptor links to high proliferation and increases from primary to metastatic endometrial cancer lesions. *Eur J Cancer*. 2014; 50(17):3003–10. Epub 2014/10/05. doi: [10.1016/j.ejca.2014.09.003](https://doi.org/10.1016/j.ejca.2014.09.003) PMID: [25281525](https://pubmed.ncbi.nlm.nih.gov/25281525/).
 25. Schweppe K-W. The Current Place of Progestins in the Treatment of Endometriosis. *Expert Rev of Obstet Gynecol*. 2012; 7(2):141–8.
 26. Mounsey AL, Wilgus A, Slawson DC. Diagnosis and management of endometriosis. *American family physician*. 2006; 74(4):594–600. Epub 2006/08/31. PMID: [16939179](https://pubmed.ncbi.nlm.nih.gov/16939179/).
 27. Dunselman GA, Vermeulen N, Becker C, Calhaz-Jorge C, D'Hooghe T, De Bie B, et al. ESHRE guideline: management of women with endometriosis. *Hum Reprod*. 2014; 29(3):400–12. Epub 2014/01/18. doi: [10.1093/humrep/det457](https://doi.org/10.1093/humrep/det457) PMID: [24435778](https://pubmed.ncbi.nlm.nih.gov/24435778/).
 28. Vercellini P, Vigano P, Somigliana E, Fedele L. Endometriosis: pathogenesis and treatment. *Nature reviews Endocrinology*. 2014; 10(5):261–75. Epub 2013/12/25. doi: [10.1038/nrendo.2013.255](https://doi.org/10.1038/nrendo.2013.255) PMID: [24366116](https://pubmed.ncbi.nlm.nih.gov/24366116/).
 29. Burney RO, Giudice LC. Pathogenesis and pathophysiology of endometriosis. *Fertility and sterility*. 2012; 98(3):511–9. Epub 2012/07/24. doi: [10.1016/j.fertnstert.2012.06.029](https://doi.org/10.1016/j.fertnstert.2012.06.029) PMID: [22819144](https://pubmed.ncbi.nlm.nih.gov/22819144/).
 30. Attia GR, Zeitoun K, Edwards D, Johns A, Carr BR, Bulun SE. Progesterone receptor isoform A but not B is expressed in endometriosis. *The Journal of clinical endocrinology and metabolism*. 2000; 85(8):2897–902. Epub 2000/08/18. PMID: [10946900](https://pubmed.ncbi.nlm.nih.gov/10946900/). doi: [10.1210/jcem.85.8.6739](https://doi.org/10.1210/jcem.85.8.6739)
 31. Prentice A, Randall BJ, Weddell A, McGill A, Henry L, Horne CH, et al. Ovarian steroid receptor expression in endometriosis and in two potential parent epithelia: endometrium and peritoneal mesothelium. *Hum Reprod*. 1992; 7(9):1318–25. Epub 1992/10/01. PMID: [1479018](https://pubmed.ncbi.nlm.nih.gov/1479018/).

32. Bergqvist A, Ferno M. Estrogen and progesterone receptors in endometriotic tissue and endometrium: comparison according to localization and recurrence. *Fertility and sterility*. 1993; 60(1):63–8. Epub 1993/07/01. PMID: [8513960](#).
33. Hayashi A, Tanabe A, Kawabe S, Hayashi M, Yuguchi H, Yamashita Y, et al. Dienogest increases the progesterone receptor isoform B/A ratio in patients with ovarian endometriosis. *Journal of ovarian research*. 2012; 5(1):31. Epub 2012/11/02. doi: [10.1186/1757-2215-5-31](#) PMID: [23113924](#); PubMed Central PMCID: PMC3541078.
34. Fazleabas AT. Progesterone resistance in a baboon model of endometriosis. *Seminars in reproductive medicine*. 2010; 28(1):75–80. Epub 2010/01/28. doi: [10.1055/s-0029-1242997](#) PMID: [20104431](#).
35. Hadfield R, Mardon H, Barlow D, Kennedy S. Delay in the diagnosis of endometriosis: a survey of women from the USA and the UK. *Hum Reprod*. 1996; 11(4):878–80. Epub 1996/04/01. PMID: [8671344](#).
36. Li Q, Davila J, Kannan A, Flaws JA, Bagchi MK, Bagchi IC. Chronic Exposure to Bisphenol A Affects Uterine Function During Early Pregnancy in Mice. *Endocrinology*. 2016; 157(5):1764–74. Epub 2016/03/30. doi: [10.1210/en.2015-2031](#) PMID: [27022677](#).
37. Fuhrich DG, Lessey BA, Savaris RF. Comparison of HSCORE assessment of endometrial beta3 integrin subunit expression with digital HSCORE using computerized image analysis (ImageJ). *Analytical and quantitative cytopathology and histopathology*. 2013; 35(4):210–6. Epub 2013/12/18. PMID: [24341124](#); PubMed Central PMCID: PMC4090774.
38. van Kaam KJ, Schouten JP, Nap AW, Dunselman GA, Groothuis PG. Fibromuscular differentiation in deeply infiltrating endometriosis is a reaction of resident fibroblasts to the presence of ectopic endometrium. *Hum Reprod*. 2008; 23(12):2692–700. Epub 2008/08/22. doi: [10.1093/humrep/den153](#) PMID: [18716038](#).
39. Zhao Y, Li Q, Katzenellenbogen BS, Lau LF, Taylor RN, Bagchi IC, et al. Estrogen-induced CCN1 is critical for establishment of endometriosis-like lesions in mice. *Mol Endocrinol*. 2014; 28(12):1934–47. Epub 2014/10/17. doi: [10.1210/me.2014-1080](#) PMID: [25321413](#); PubMed Central PMCID: PMC4250364.
40. Bruner-Tran KL, Herington JL, Duleba AJ, Taylor HS, Osteen KG. Medical management of endometriosis: emerging evidence linking inflammation to disease pathophysiology. *Minerva ginecologica*. 2013; 65(2):199–213. Epub 2013/04/20. PMID: [23598784](#); PubMed Central PMCID: PMC3718308.
41. Sica A, Mantovani A. Macrophage plasticity and polarization: in vivo veritas. *The Journal of clinical investigation*. 2012; 122(3):787–95. Epub 2012/03/02. doi: [10.1172/JCI59643](#) PMID: [22378047](#); PubMed Central PMCID: PMC3287223.
42. Bacci M, Capobianco A, Monno A, Cottone L, Di Puppo F, Camisa B, et al. Macrophages are alternatively activated in patients with endometriosis and required for growth and vascularization of lesions in a mouse model of disease. *The American journal of pathology*. 2009; 175(2):547–56. Epub 2009/07/04. doi: [10.2353/ajpath.2009.081011](#) PMID: [19574425](#); PubMed Central PMCID: PMC2716955.
43. Ghosn EE, Cassado AA, Govoni GR, Fukuhara T, Yang Y, Monack DM, et al. Two physically, functionally, and developmentally distinct peritoneal macrophage subsets. *Proceedings of the National Academy of Sciences of the United States of America*. 2010; 107(6):2568–73. Epub 2010/02/06. doi: [10.1073/pnas.0915000107](#) PMID: [20133793](#); PubMed Central PMCID: PMC2823920.
44. Wu Y, Strawn E, Basir Z, Halverson G, Guo SW. Promoter hypermethylation of progesterone receptor isoform B (PR-B) in endometriosis. *Epigenetics: official journal of the DNA Methylation Society*. 2006; 1(2):106–11. Epub 2007/10/30. PMID: [17965625](#).
45. Meyer JL, Zimbardi D, Podgaec S, Amorim RL, Abrao MS, Rainho CA. DNA methylation patterns of steroid receptor genes ESR1, ESR2 and PGR in deep endometriosis compromising the rectum. *International journal of molecular medicine*. 2014; 33(4):897–904. Epub 2014/02/01. doi: [10.3892/ijmm.2014.1637](#) PMID: [24481237](#).
46. Xue Q, Lin Z, Cheng YH, Huang CC, Marsh E, Yin P, et al. Promoter methylation regulates estrogen receptor 2 in human endometrium and endometriosis. *Biology of reproduction*. 2007; 77(4):681–7. Epub 2007/07/13. doi: [10.1095/biolreprod.107.061804](#) PMID: [17625110](#).
47. Lee B, Du H, Taylor HS. Experimental murine endometriosis induces DNA methylation and altered gene expression in eutopic endometrium. *Biology of reproduction*. 2009; 80(1):79–85. Epub 2008/09/19. doi: [10.1095/biolreprod.108.070391](#) PMID: [18799756](#); PubMed Central PMCID: PMC2804809.
48. Wu Y, Halverson G, Basir Z, Strawn E, Yan P, Guo SW. Aberrant methylation at HOXA10 may be responsible for its aberrant expression in the endometrium of patients with endometriosis. *American journal of obstetrics and gynecology*. 2005; 193(2):371–80. Epub 2005/08/16. doi: [10.1016/j.ajog.2005.01.034](#) PMID: [16098858](#).

49. Andersson KL, Bussani C, Fambrini M, Polverino V, Taddei GL, Gemzell-Danielsson K, et al. DNA methylation of HOXA10 in eutopic and ectopic endometrium. *Hum Reprod.* 2014; 29(9):1906–11. Epub 2014/06/26. doi: [10.1093/humrep/deu161](https://doi.org/10.1093/humrep/deu161) PMID: [24963168](https://pubmed.ncbi.nlm.nih.gov/24963168/).
50. Dyson MT, Roqueiro D, Monsivais D, Ercan CM, Pavone ME, Brooks DC, et al. Genome-wide DNA methylation analysis predicts an epigenetic switch for GATA factor expression in endometriosis. *PLoS genetics.* 2014; 10(3):e1004158. Epub 2014/03/08. doi: [10.1371/journal.pgen.1004158](https://doi.org/10.1371/journal.pgen.1004158) PMID: [24603652](https://pubmed.ncbi.nlm.nih.gov/24603652/); PubMed Central PMCID: [PMC3945170](https://pubmed.ncbi.nlm.nih.gov/PMC3945170/).
51. Slack A, Cervoni N, Pinard M, Szyf M. Feedback regulation of DNA methyltransferase gene expression by methylation. *European journal of biochemistry / FEBS.* 1999; 264(1):191–9. Epub 1999/08/14. PMID: [10447688](https://pubmed.ncbi.nlm.nih.gov/10447688/).
52. Jackson KS, Brudney A, Hastings JM, Mavrogianis PA, Kim JJ, Fazleabas AT. The altered distribution of the steroid hormone receptors and the chaperone immunophilin FKBP52 in a baboon model of endometriosis is associated with progesterone resistance during the window of uterine receptivity. *Reprod Sci.* 2007; 14(2):137–50. Epub 2007/07/20. doi: [10.1177/1933719106298409](https://doi.org/10.1177/1933719106298409) PMID: [17636225](https://pubmed.ncbi.nlm.nih.gov/17636225/).
53. Aghajanova L, Velarde MC, Giudice LC. The progesterone receptor coactivator Hic-5 is involved in the pathophysiology of endometriosis. *Endocrinology.* 2009; 150(8):3863–70. Epub 2009/04/25. doi: [10.1210/en.2009-0008](https://doi.org/10.1210/en.2009-0008) PMID: [19389829](https://pubmed.ncbi.nlm.nih.gov/19389829/); PubMed Central PMCID: [PMC2717860](https://pubmed.ncbi.nlm.nih.gov/PMC2717860/).
54. Kim TH, Yu Y, Luo L, Lydon JP, Jeong JW, Kim JJ. Activated AKT pathway promotes establishment of endometriosis. *Endocrinology.* 2014; 155(5):1921–30. Epub 2014/03/13. doi: [10.1210/en.2013-1951](https://doi.org/10.1210/en.2013-1951) PMID: [24605828](https://pubmed.ncbi.nlm.nih.gov/24605828/); PubMed Central PMCID: [PMC3990849](https://pubmed.ncbi.nlm.nih.gov/PMC3990849/).
55. Izawa M, Taniguchi F, Terakawa N, Harada T. Epigenetic aberration of gene expression in endometriosis. *Frontiers in bioscience.* 2013; 5:900–10. Epub 2013/06/12. PMID: [23747905](https://pubmed.ncbi.nlm.nih.gov/23747905/).
56. Nasu K, Kawano Y, Tsukamoto Y, Takano M, Takai N, Li H, et al. Aberrant DNA methylation status of endometriosis: epigenetics as the pathogenesis, biomarker and therapeutic target. *The journal of obstetrics and gynaecology research.* 2011; 37(7):683–95. Epub 2011/06/10. doi: [10.1111/j.1447-0756.2011.01663.x](https://doi.org/10.1111/j.1447-0756.2011.01663.x) PMID: [21651673](https://pubmed.ncbi.nlm.nih.gov/21651673/).
57. Guo SW. Epigenetics of endometriosis. *Molecular human reproduction.* 2009; 15(10):587–607. Epub 2009/08/05. doi: [10.1093/molehr/gap064](https://doi.org/10.1093/molehr/gap064) PMID: [19651637](https://pubmed.ncbi.nlm.nih.gov/19651637/).
58. Borghese B, Barboux S, Mondon F, Santulli P, Pierre G, Vinci G, et al. Research resource: genome-wide profiling of methylated promoters in endometriosis reveals a subtelomeric location of hypermethylation. *Molecular endocrinology.* 2010; 24(9):1872–85. Epub 2010/08/06. doi: [10.1210/me.2010-0160](https://doi.org/10.1210/me.2010-0160) PMID: [20685852](https://pubmed.ncbi.nlm.nih.gov/20685852/).
59. Yamagata Y, Nishino K, Takaki E, Sato S, Maekawa R, Nakai A, et al. Genome-wide DNA methylation profiling in cultured eutopic and ectopic endometrial stromal cells. *PloS one.* 2014; 9(1):e83612. Epub 2014/01/28. doi: [10.1371/journal.pone.0083612](https://doi.org/10.1371/journal.pone.0083612) PMID: [24465385](https://pubmed.ncbi.nlm.nih.gov/24465385/); PubMed Central PMCID: [PMC3900404](https://pubmed.ncbi.nlm.nih.gov/PMC3900404/).
60. Naqvi H, Ilagan Y, Krikun G, Taylor HS. Altered genome-wide methylation in endometriosis. *Reprod Sci.* 2014; 21(10):1237–43. Epub 2014/05/03. doi: [10.1177/1933719114532841](https://doi.org/10.1177/1933719114532841) PMID: [24784717](https://pubmed.ncbi.nlm.nih.gov/24784717/).
61. Afshar Y, Hastings J, Roqueiro D, Jeong JW, Giudice LC, Fazleabas AT. Changes in eutopic endometrial gene expression during the progression of experimental endometriosis in the baboon, *Papio anubis*. *Biology of reproduction.* 2013; 88(2):44. Epub 2013/01/04. doi: [10.1095/biolreprod.112.104497](https://doi.org/10.1095/biolreprod.112.104497) PMID: [23284138](https://pubmed.ncbi.nlm.nih.gov/23284138/); PubMed Central PMCID: [PMC3589234](https://pubmed.ncbi.nlm.nih.gov/PMC3589234/).
62. Wu Y, Starzinski-Powitz A, Guo SW. Prolonged stimulation with tumor necrosis factor-alpha induced partial methylation at PR-B promoter in immortalized epithelial-like endometriotic cells. *Fertility and sterility.* 2008; 90(1):234–7. Epub 2007/08/31. doi: [10.1016/j.fertnstert.2007.06.008](https://doi.org/10.1016/j.fertnstert.2007.06.008) PMID: [17727850](https://pubmed.ncbi.nlm.nih.gov/17727850/).
63. Xia D, Wang D, Kim SH, Katoh H, DuBois RN. Prostaglandin E2 promotes intestinal tumor growth via DNA methylation. *Nature medicine.* 2012; 18(2):224–6. Epub 2012/01/25. doi: [10.1038/nm.2608](https://doi.org/10.1038/nm.2608) PMID: [22270723](https://pubmed.ncbi.nlm.nih.gov/22270723/); PubMed Central PMCID: [PMC3274627](https://pubmed.ncbi.nlm.nih.gov/PMC3274627/).
64. Hahn MA, Hahn T, Lee DH, Esworthy RS, Kim BW, Riggs AD, et al. Methylation of polycomb target genes in intestinal cancer is mediated by inflammation. *Cancer research.* 2008; 68(24):10280–9. Epub 2008/12/17. doi: [10.1158/0008-5472.CAN-08-1957](https://doi.org/10.1158/0008-5472.CAN-08-1957) PMID: [19074896](https://pubmed.ncbi.nlm.nih.gov/19074896/); PubMed Central PMCID: [PMC2491345](https://pubmed.ncbi.nlm.nih.gov/PMC2491345/).
65. Yasmin R, Siraj S, Hassan A, Khan AR, Abbasi R, Ahmad N. Epigenetic regulation of inflammatory cytokines and associated genes in human malignancies. *Mediators of inflammation.* 2015; 2015:201703. Epub 2015/03/31. doi: [10.1155/2015/201703](https://doi.org/10.1155/2015/201703) PMID: [25814785](https://pubmed.ncbi.nlm.nih.gov/25814785/); PubMed Central PMCID: [PMC4359879](https://pubmed.ncbi.nlm.nih.gov/PMC4359879/).
66. Foran E, Garrity-Park MM, Mureau C, Newell J, Smyrk TC, Limburg PJ, et al. Upregulation of DNA methyltransferase-mediated gene silencing, anchorage-independent growth, and migration of colon

- cancer cells by interleukin-6. *Molecular cancer research: MCR*. 2010; 8(4):471–81. Epub 2010/04/01. doi: [10.1158/1541-7786.MCR-09-0496](https://doi.org/10.1158/1541-7786.MCR-09-0496) PMID: [20354000](https://pubmed.ncbi.nlm.nih.gov/20354000/).
67. Khin SS, Kitazawa R, Kondo T, Idei Y, Fujimoto M, Haraguchi R, et al. Epigenetic Alteration by DNA Promoter Hypermethylation of Genes Related to Transforming Growth Factor-beta (TGF-beta) Signaling in Cancer. *Cancers*. 2011; 3(1):982–93. Epub 2011/01/01. doi: [10.3390/cancers3010982](https://doi.org/10.3390/cancers3010982) PMID: [24212650](https://pubmed.ncbi.nlm.nih.gov/24212650/); PubMed Central PMCID: PMC3756400.
 68. Kaponis A, Iwabe T, Taniguchi F, Ito M, Deura I, Decavalas G, et al. The role of NF-kappaB in endometriosis. *Frontiers in bioscience*. 2012; 4:1213–34. Epub 2012/06/02. PMID: [22652867](https://pubmed.ncbi.nlm.nih.gov/22652867/).
 69. Lousse JC, Van Langendonck A, Defrere S, Ramos RG, Colette S, Donnez J. Peritoneal endometriosis is an inflammatory disease. *Frontiers in bioscience*. 2012; 4:23–40. Epub 2011/12/29. PMID: [22201853](https://pubmed.ncbi.nlm.nih.gov/22201853/).
 70. Pawar S, Hantak AM, Bagchi IC, Bagchi MK. Minireview: Steroid-regulated paracrine mechanisms controlling implantation. *Mol Endocrinol*. 2014; 28(9):1408–22. Epub 2014/07/23. doi: [10.1210/me.2014-1074](https://doi.org/10.1210/me.2014-1074) PMID: [25051170](https://pubmed.ncbi.nlm.nih.gov/25051170/); PubMed Central PMCID: PMC4154240.
 71. Zheng QM, Mao HL, Zhao YJ, Zhao J, Wei X, Liu PS. Risk of endometrial polyps in women with endometriosis: a meta-analysis. *Reproductive biology and endocrinology: RB&E*. 2015; 13(1):103. Epub 2015/09/18. doi: [10.1186/s12958-015-0092-2](https://doi.org/10.1186/s12958-015-0092-2) PMID: [26377086](https://pubmed.ncbi.nlm.nih.gov/26377086/); PubMed Central PMCID: PMC4574029.
 72. Xiu-li W, Wen-jun C, Hui-hua D, Su-ping H, Shi-long F. ERB-041, a selective ER beta agonist, inhibits iNOS production in LPS-activated peritoneal macrophages of endometriosis via suppression of NF-kappaB activation. *Molecular immunology*. 2009; 46(11–12):2413–8. Epub 2009/05/19. doi: [10.1016/j.molimm.2009.04.014](https://doi.org/10.1016/j.molimm.2009.04.014) PMID: [19447495](https://pubmed.ncbi.nlm.nih.gov/19447495/).
 73. Hughes GC, Choubey D. Modulation of autoimmune rheumatic diseases by oestrogen and progesterone. *Nature reviews Rheumatology*. 2014; 10(12):740–51. Epub 2014/08/27. doi: [10.1038/nrrheum.2014.144](https://doi.org/10.1038/nrrheum.2014.144) PMID: [25155581](https://pubmed.ncbi.nlm.nih.gov/25155581/).
 74. Pisetsky DS, Spencer DM. Effects of progesterone and estradiol sex hormones on the release of microparticles by RAW 264.7 macrophages stimulated by Poly(I:C). *Clinical and vaccine immunology: CVI*. 2011; 18(9):1420–6. Epub 2011/06/10. doi: [10.1128/CVI.05110-11](https://doi.org/10.1128/CVI.05110-11) PMID: [21653747](https://pubmed.ncbi.nlm.nih.gov/21653747/); PubMed Central PMCID: PMC3165218.
 75. Jones LA, Anthony JP, Henriquez FL, Lyons RE, Nickdel MB, Carter KC, et al. Toll-like receptor-4-mediated macrophage activation is differentially regulated by progesterone via the glucocorticoid and progesterone receptors. *Immunology*. 2008; 125(1):59–69. doi: [10.1111/j.1365-2567.2008.02820.x](https://doi.org/10.1111/j.1365-2567.2008.02820.x) PMID: [18373668](https://pubmed.ncbi.nlm.nih.gov/18373668/); PubMed Central PMCID: PMCPMC2526260.