

Photo Quiz

(For answer and discussion, see page 2843 in this issue [[doi:10.1128/JCM.03295-14](https://doi.org/10.1128/JCM.03295-14)].)

A Man with Lymphadenopathy and Lethargy

Xiaoxia Hu,^a Yi Sun,^b Xinxin Xia,^a Lili Xu,^a Bihe Min,^a Daoyin Zhou,^b Libing Wang,^b Hui Wang,^b Ziguang Niu,^b Miaoxia He,^c Jianmin Wang,^a Anmei Deng,^b Jianmin Yang^a

Institute of Hematology, Department of Hematology,^a Department of Laboratory Medicine,^b and Department of Pathology,^c Changhai Hospital, Second Military Medical University, Shanghai, China

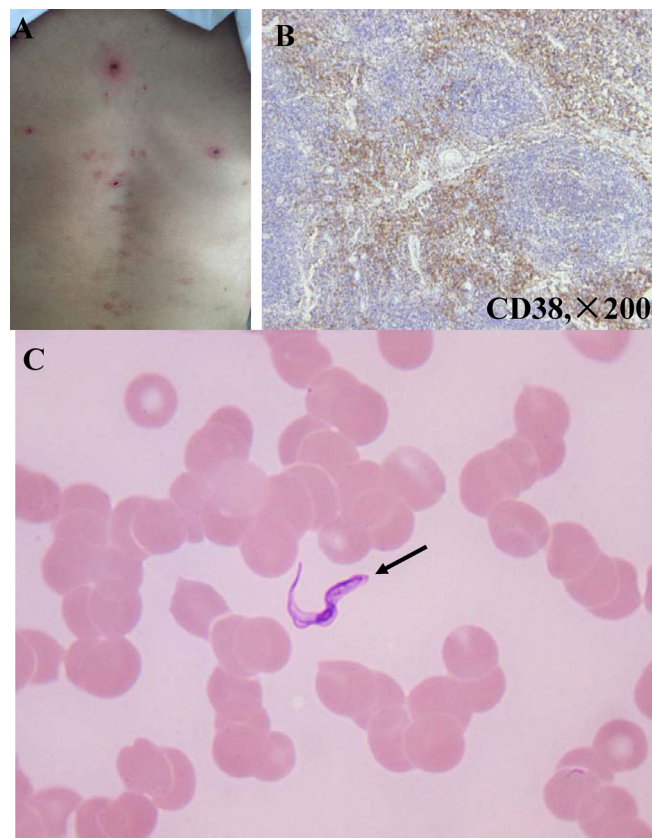


FIG 1 (A) Multiple papules observed on the front chest. (B) An axillary node biopsy demonstrated reactive follicular hyperplasia with CD38 staining (magnification, $\times 200$). (C) Structure found in the blood film.

A 45-year-old Chinese male presented with lymphadenopathy, irregular fever, and lethargy. The patient had traveled to the Gabonese Republic in West Africa as a member of a labor export service and had stayed there for 6 months every year for the past 4 years. On examination, multiple papules were observed on the skin of the front chest (**Fig. 1A**). Lymphadenopathy was observed in the right neck and the bilateral axilla. Mild splenomegaly was present. The serum immunoglobulin IgM level was increased to 27.5 g/liter. An axillary node biopsy demonstrated reactive follicular hyperplasia, and no malignancy was noted (**Fig. 1B**). Numerous structures were found in the peripheral blood smear (**Fig. 1C**).

Citation Hu X, Sun Y, Xia X, Xu L, Min B, Zhou D, Wang L, Wang H, Niu Z, He M, Wang J, Deng A, Yang J. 2016. A man with lymphadenopathy and lethargy. *J Clin Microbiol* 54:2631. [doi:10.1128/JCM.03285-14](https://doi.org/10.1128/JCM.03285-14).

Editor: P. Bourbeau

Address correspondence to Anmei Deng, amdeng@163.com, or Jianmin Yang, yangjianmin@medmail.com.cn.

X.H. and Y.S. contributed equally to the paper.

Copyright © 2016, American Society for Microbiology. All Rights Reserved.