

Perspectives Series: Cell Adhesion in Vascular Biology

Heparan Sulfate Proteoglycans of the Cardiovascular System Specific Structures Emerge But How Is Synthesis Regulated?

Robert D. Rosenberg,*[‡] Nicholas W. Shworak,*[‡] Jian Liu,* John J. Schwartz,* and Lijuan Zhang*

*Department of Biology, Massachusetts Institute of Technology, Cambridge, Massachusetts 02139; and [‡]Department of Medicine, Harvard Medical School, Beth Israel Hospital, Boston, Massachusetts 02215

Introduction

The cell surfaces and surrounding extracellular matrix of the cardiovascular system possess large quantities of heparan sulfate proteoglycans (HSPGs)¹ (1). These highly charged macromolecules consist of different core proteins with covalently linked heparan sulfate chains (HS) of varying monosaccharide sequence which serve as critical mediators of biologic processes (2, 3). For example, these components are involved in regulating mesodermal cell fate, positioning of the heart, vasculogenesis and angiogenesis after ischemic injury, interactions of cells with adhesive proteins and blood vessels, proliferation of smooth muscle cells during atherogenesis, metabolism of lipoproteins, nonthrombogenic characteristics of endothelial cells, etc. (4–9). Detailed investigations over the past decade have defined the structures of HSPGs, uncovered the molecular mechanisms by which these components carry out their diverse functions, and revealed that specific monosaccharide sequences of HS are required for interaction with biologic targets. In this review, we outline the current state of our knowledge about the structure and the biosynthesis of HSPGs as well as describe interactions of these components with growth factors, enzymes, and protease inhibitors. These observations provide a conceptual framework for elucidating the roles of HSPGs in other biologic systems.

Address correspondence to Robert D. Rosenberg, Massachusetts Institute of Technology, Bldg. 68-480, 77 Massachusetts Ave., Cambridge, MA 02139. Phone: 617-253-8804; FAX: 617-258-6553; E-mail: rdrosen@mit.edu

Accepted for publication 31 March 1997.

1. *Abbreviations used in this paper:* AT, antithrombin; CS, chondroitin sulfate; FGFs, fibroblast growth factors; GAG, glycosaminoglycan; GlcA, glucuronic acid; GlcA 2S, 2-O-sulfated glucuronic acid; GlcNAc, N-acetylglucosamine; GlcN(Ac/S), N-acetyl or N-sulfated glucosamine; GlcNAc 6S, 6-O-sulfated N-acetylglucosamine; GlcNS 3S, 3-O-sulfated N-sulfated glucosamine; HexA, unspecified uronic acid, either GlcA or IdoA; HS, heparan sulfate chains; HSPGs, heparan sulfate proteoglycans; IdoA, iduronic acid; IdoA 2S, 2-O-sulfated iduronic acid; LPL, lipoprotein lipase; NST, N-deacetylase/N-sulfotransferase; 6-OST, 6-O-sulfotransferase. For all sequences given, the linkages and configurations are $\rightarrow 4\text{-D-GlcAp}\beta 1\rightarrow$, $\rightarrow 4\text{-D-GlcNp(Ac/S)}\alpha 1\rightarrow$, and $\rightarrow 4\text{-L-IdoA}\alpha 1\rightarrow$.

J. Clin. Invest.

© The American Society for Clinical Investigation, Inc.

0021-9738/97/05/2062/09 \$2.00

Volume 99, Number 9, May 1997, 2062–2070

Structure and biosynthesis of HSPGs

The syndecan, glypican, and perlecan core protein families constitute the major HSPGs generated within the cardiovascular system (Fig. 1). The syndecan core protein family contains four human or murine members as well as a *Drosophila* homologue. Syndecan family members exhibit an extracellular region with multiple glycosaminoglycan (GAG) attachment sites and a protease dibasic cleavage sequence, a homologous membrane spanning region, and a short highly conserved cytoplasmic tail with four tyrosine residues at fixed positions (for review see reference 10). The sequences of the extracellular regions of syndecan family members are quite divergent except for the GAG attachment and putative cleavage sites, suggesting that this domain may function as a potentially cleavable protein scaffold onto which GAGs are attached. The residues of the extracellular and transmembrane regions of syndecan family members allow homo-oligomerization which can permit the cytoplasmic tail to interact with and activate protein kinase C (11, 12). The cytoplasmic tails of syndecan family members also interact with either intracellular microfilaments or focal adhesion, depending upon the core protein (13). In the former instance, a specific tyrosine residue appears to be involved in regulating this association (14). The phosphorylation of intracytoplasmic serine residues and possibly tyrosine residues may play a critical role in the above process (15). Syndecan family core proteins exhibit cell type-specific distributions with vascular endothelial cells/smooth muscle cells expressing syndecans-1, -2, and -4 with predominant targeting to basolateral surfaces. The glypican core protein family is comprised of four human or murine members as well as the *Drosophila* homologue *dally*. (Recent data reveal the glypican family to be even larger [Saunders, S., S. Paine-Saunders, and A.D. Lander, manuscript submitted for publication].) Glypican family members possess an extracellular region with GAG attachment sites, 14 invariant cysteine residues, which stabilize a highly compact tertiary structure, and a COOH-terminal GPI anchor. The extracellular regions of the different family members are quite similar, which suggests that these areas may be involved in important cellular functions such as binding to ligands or interaction with Golgi components to direct glycanation. Glypican family core proteins are selectively expressed on different cell types with only glypican-1 present on vascular endothelial cells/smooth muscle cells (for review see reference 16). These core proteins are mainly targeted to apical surfaces which are partially dependent upon the extent of glycanation (17). Perlecan represents the final class of core protein to be considered with only a single human or murine family member, but multiple splice variants are possible (18). The intact

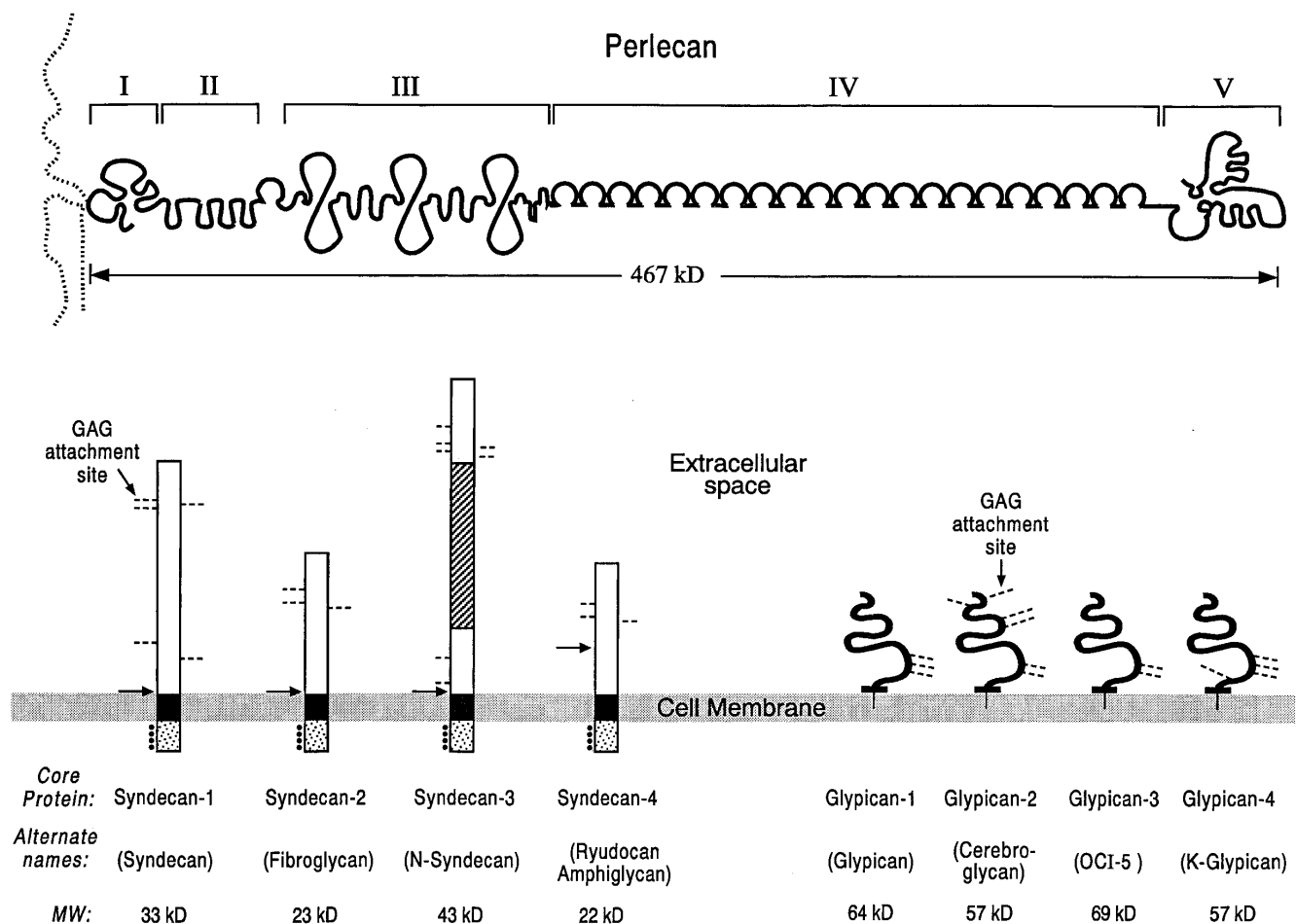


Figure 1. Major HSPG core protein families. Displayed are the human members of the membrane spanning syndecans, the GPI anchored glypicans, and the matrix localized perlecan (467 kD). Potential and identified GAG attachment sites are indicated by dotted lines. For the syndecans, indicated are the homologous transmembrane domain (*black*) and intracellular domain (*stipple*) with conserved tyrosines (*dots*), as well as potential dibasic cleavage site (*arrows*) and the Thr, Ser, Pro rich domain of syndecan-3 (*crosshatch*). The structure of perlecan is also displayed and includes a region for HS attachment (*I*), as well as domains which are homologous to the LDL receptor (*II*), laminin short arm (*III*), N-CAM (*IV*), and laminin A globular end (*V*).

core protein contains five separate regions with a variety of intriguing structural motifs decorated by posttranslational modifications such as GAG chains, O-linked nonsulfated oligosaccharides as well as long chain fatty acids. Perlecan is secreted by multiple cell types including vascular endothelial cells/smooth muscle cells, and interacts with collagens, laminin, and other components within the basement membrane (19).

The biosynthetic mechanism of core protein glycanation has been extensively investigated over the past decade, but only partially defined. The glycanation of core proteins is initiated by four specific enzymes which generate a unique linkage region tetrasaccharide (20). The tetrasaccharide acceptor site is represented by a Ser-Gly (Ala)-X-Gly (Ala) sequence with subsequent attachment of HS, rather than chondroitin sulfate (CS), favored by multiple acidic amino acids at a distance of seven to nine residues, the occurrence of tryptophan residues in close proximity, and the presence of adjacent tracts of Ser-Gly repeats (for review see reference 21). However, the relative intracellular concentrations of metabolic intermediates required for HS versus CS biosynthesis, and the overall struc-

tures of core proteins also play a critical role in specifying the linkage of a particular GAG. The attachment of HS to glypican family members is unusually selective, frequently approaching 100%; the linkage of HS to the NH₂ terminus of perlecan is highly specific frequently approximating 80% with CS linked to the remaining sites, whereas the coupling of HS to syndecan family members is favored averaging 60% with the remaining sites decorated with CS (22–24). Under certain conditions, occasional acceptor sites in the above core proteins may be unsubstituted.

The fine structure of HS attached to core proteins is established by a complex biosynthetic pathway (Fig. 2). The generation of HS is initiated by HS copolymerase which sequentially transfers glucuronic acid (GlcA) and *N*-acetylglucosamine (GlcNAc) residues from their respective sugar nucleotides to the tetrasaccharide linkage region to produce GAGs with ~ 100 disaccharide units of $\rightarrow 4\text{-D-GlcAp}\beta 1\rightarrow 4\text{-D-GlcNpAc}\alpha 1\rightarrow$. The homogenous copolymer is structurally altered at rare GlcNAc residues by *N*-deacetylase/*N*-sulfotransferase (NST), which replaces *N*-acetyl groups with *N*-sulfate groups, with the process

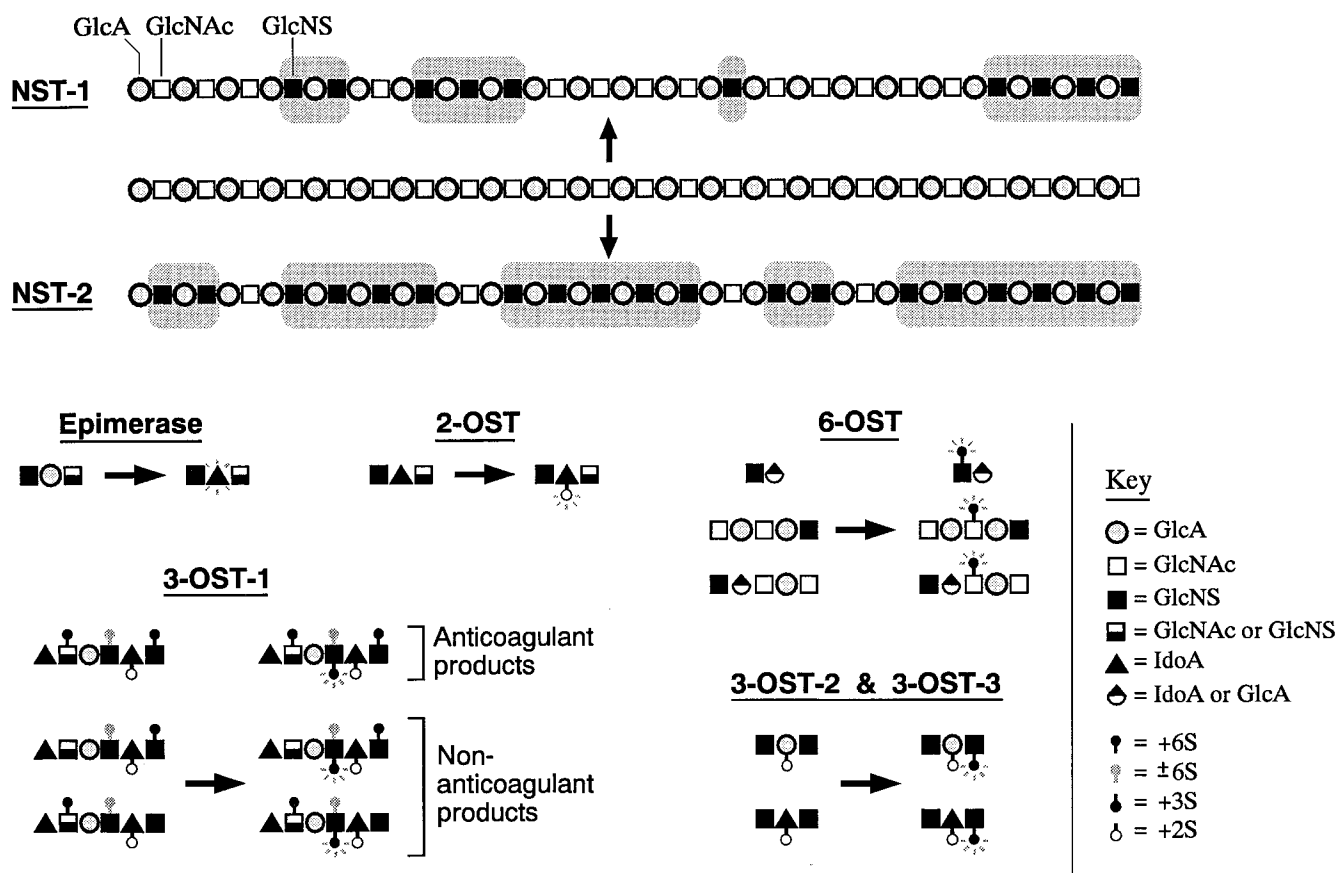


Figure 2. Biochemical specificities of heparan biosynthetic enzymes. Specificities are based on biochemical activities of cell extracts (epimerase, 2-OST, 6-OST) (for review see reference 25) or from expression of cloned cDNAs of NST (87, 88) and 3-OST isoforms (Liu, J., N.W. Shworak, J.J. Schwartz, L.M.S. Fritze, and R.D. Rosenberg; and Zhang, L., N.W. Shworak, J. Liu, and R.D. Rosenberg, manuscripts in preparation). Shading indicates blocks of GlcNS generated by NST isoforms.

spreading in both directions to generate modified domains of ~ 5 disaccharide units separated by relatively unmodified regions of ~ 18 disaccharide units. The C5 glucuronosyl/iduronosyl epimerase then catalyzes transformation of occasional D-GlcA residues to L-iduronic acid (IdoA) residues if N-sulfate groups are present at the immediate upstream position. The equilibrium distribution of this reaction lies far in the direction of GlcA but epimerization is favored by sulfation of a IdoA. The iduronosyl 2-O-sulfotransferase (2-OST) then sulfates selected IdoA residues (creates IdoA 2S) provided that N-sulfated glucosamine (GlcNS) groups are located at the immediate upstream position and 6-O-sulfated glucosamine [GlcN (Ac/S) 6S] groups are absent from the immediate downstream position. The glucuronosyl 2-O-sulfotransferase also sulfates rare GlcA residues (creates GlcA 2S) which prevent subsequent epimerization to IdoA. The glucosaminyl 6-O-sulfotransferase (6-OST) then frequently sulfates GlcN(Ac/S) residues provided that N-sulfate groups are present at either the immediate upstream or downstream positions (extensively reviewed in reference 25). Finally, the glucosaminyl 3-O-sulfotransferase (3-OST-1) sulfates occasional GlcNS and GlcNS 6S residues (creates GlcNS 3S and GlcNS 3S 6S, respectively) predominantly when \rightarrow HexA (GlcA or IdoA) \rightarrow GlcN(Ac/S) \pm 6S 6S \rightarrow GlcA \rightarrow is present in the immediate upstream position and the downstream location is filled by an \rightarrow IdoA 2S \rightarrow GlcNS \rightarrow . Thus, the above enzymatic reactions which generate

distinct HS fine structures represent, at the very minimum, a partially ordered biochemical pathway with clear cut precursor/product relationships.

Until recently, all biosynthetic enzymes were postulated entities based upon the biochemical activities of cell lysates. During the past 4 yr, virtually all of these proteins have been purified and several have been molecularly cloned (26–32). The available data on the initial and final sulfation enzymes in the biosynthetic pathway provide intriguing clues about potential mechanisms for generating HS with regions of defined monosaccharide sequence. The primary structures and biochemical specificities of murine/human NSTs and 3-OSTs have been determined. We note that NST-1 and NST-2 were cloned from hepatic cells and mast cells, respectively, but are also expressed in other cell types (30–32). The two enzymes exhibit alternate specificities that initially lead to a varying extent of N-sulfation of HS (i.e., NST-1 generates $\sim 40\%$ N-sulfation of HS whereas NST-2 produces $\sim 80\%$ N-sulfation of HS), which subsequently results in different patterns of sulfation/epimerization (Fig. 2). Murine/human 3-OST-1 have also been molecularly cloned and homologous regions used to isolate human cDNA clones for 3-OST-2, and 3-OST-3 which are 60% homologous to human 3-OST-1 (Shworak, N.W., J. Liu, L.M.S. Fritze, J.J. Schwartz, L. Zhang, and R.D. Rosenberg, manuscript submitted for publication, and Shworak, N.W., J. Liu, L. Zhang, and R.D. Rosenberg, manuscript in preparation). The

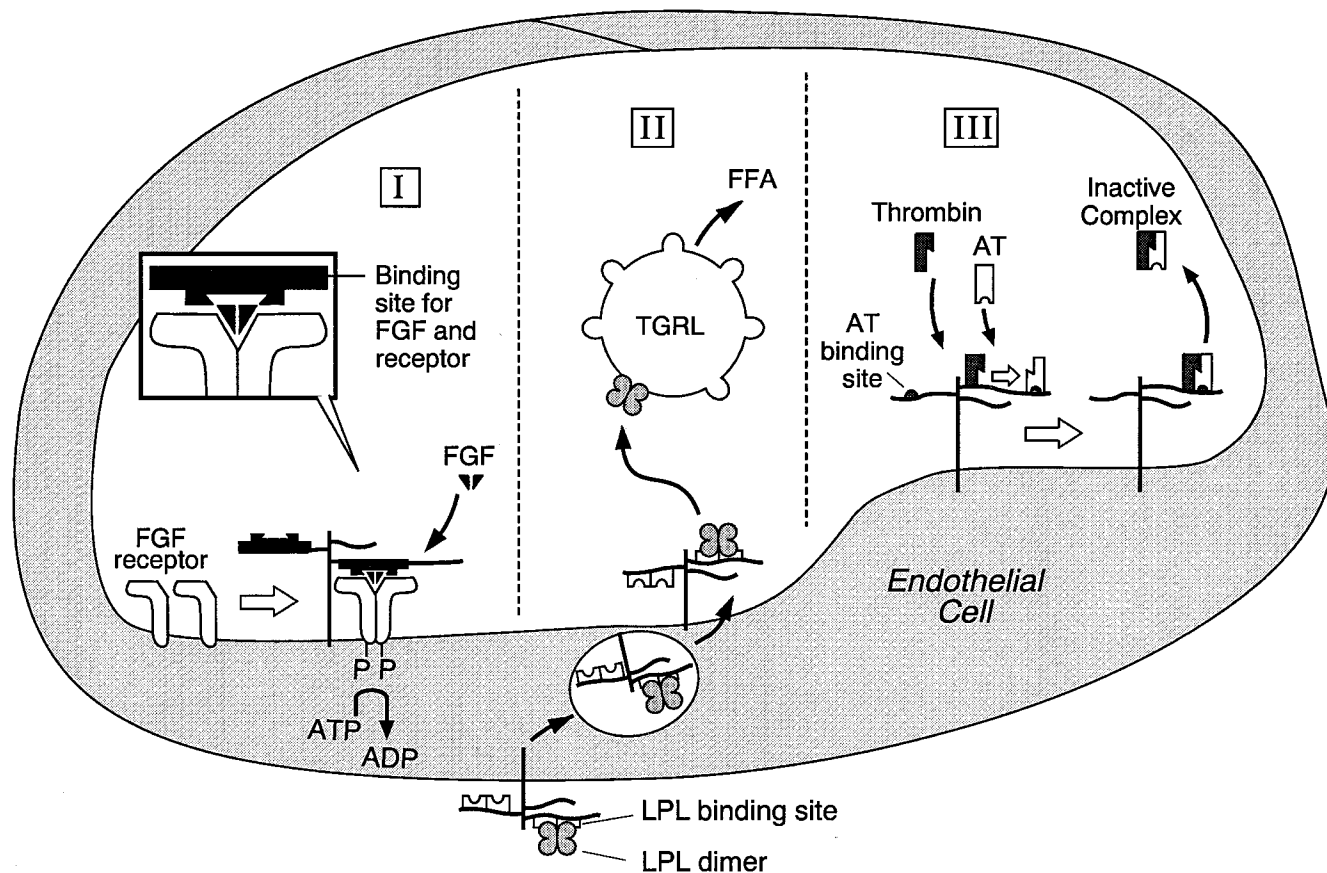


Figure 3. Distinct HS structures allow HSPGs to regulate multiple events within a single cardiovascular cell type. HSPGs are schematically depicted as a core protein with three attached HS chains. As described in the text, discrete HS sequences regulate (I) FGF signaling, (II) the presentation of LPL to triglyceride-rich lipoproteins (TGRL) to generate FFA, and (III) neutralization of coagulation proteases by AT.

3-OSTs have been expressed, and the sites of sulfation have been determined. The results demonstrate that 3-OST-1 sulfates GlcNS residues when the upstream uronic acid is GlcA, whereas 3-OST-2 and 3-OST-3 sulfate GlcNS residues when the upstream uronic acid is IdoA 2S or GlcA 2S (Fig. 2). The specificities of these enzymes are also dependent upon additional residues in the neighborhood of the site of sulfation. Based upon these data, we speculate that isoforms of biosynthetic enzyme exist in different cell types which sulfate HS at specific sites based upon the surrounding monosaccharide sequence and hence are capable of producing GAGs with regions of defined structure. The regulation of the concentrations of these enzymes, provided that they serve as limiting components in a biosynthetic pathway, would establish particular levels of HS with regions of defined monosaccharide sequence.

Growth factors and HSPGs

Fibroblast growth factors (FGFs), vascular endothelial growth factor, heparin binding EGF, the Wnts, interleukin-3, GM-CSF, and IFN-gamma form tight complexes with HSPGs (for review see reference 33). These mitogens, differentiation factors, and cytokines are critically involved in early development, angiogenesis, thrombosis, and atherosclerosis of the cardiovascular system. In the section below, we describe the regulation of FGF signaling which serves as a paradigm for elucidating the role of HSPGs in modulating the function of other growth factors/cytokines.

The HSPGs are required for high-affinity binding of FGFs to their receptors (34, 35) (Fig. 3). Syndecans-1, -2, and -4 as well as glypican-1, possess HS which carry out this function. The crystal structures of FGF-2 and heparin oligosaccharides reveal specific interactions between asp²⁸, arg¹²¹, lys¹²⁶, and gln¹³⁵ of the growth factor and the IdoA 2-O-sulfate and GlcN N-sulfate residues as well as other carboxyl groups within the oligosaccharide (36, 37). The binding of HS or heparin to FGF-2 leads to the dimerization of growth factor without significant conformational alterations, as documented by cross-linking experiments and crystallographic studies (36–38). HS or heparin also interacts with FGFR1 (39, 40). The HS binding domain of FGFR1 is positioned between the first and second IgG repeats of the extracellular domain; antibodies generated against this sequence block FGF-2 interactions, and mutations of this region drastically reduce binding of growth factor. The minimal structure of the FGF-2 binding site of HS is represented by the pentasaccharide HexA→GlcNS→HexA→GlcNS→IdoA 2S (41–43). The critical importance of the IdoA 2S residue has been confirmed by showing that Chinese hamster ovary mutants lacking this modification cannot bind to or respond to growth factor (44). However, the smallest oligosaccharide required to generate a mitogenic signal with added FGF-2 is significantly larger than that needed for growth factor binding (38). Experiments using selectively modified GAGs demonstrate that a signaling sequence is required which includes both IdoA 2S and GlcNS 6S groups (45). Indeed, the minimal binding and

signaling sequence must be present on a dodecasaccharide to induce mitogenesis with no activity noted if the same sequences are located on a decasaccharide. The two sequences appear to be necessary for binding to both growth factor and receptor.

Based upon the above data, it is surmised that HSPGs bearing specific binding and signaling sequences complex with FGF-2 to induce growth factor dimer formation and also interact directly with FGFR1 (34, 35, 39, 40). The end result is transient dimerization of the receptor which facilitates phosphorylation of cytoplasmic tails, assembly of intracellular components, and mitogenesis (46, 47). Additional monosaccharide sequences may also be required to generate stably phosphorylated higher order receptor complexes that lead to an increased strength of cell signaling (46). The regulation of FGFs by cell surface HSPGs is also likely to be modulated by extracellular and intracellular events. On the one hand, the FGFs interact with basement membrane perlecan which reduces the quantities of growth factor binding to receptor but also provides a ready reservoir for rapid mobilization (48). On the other hand, the binding of the cytoplasmic tails of syndecans to cytoskeletal elements and protein kinase C may modulate the response to FGF signaling (11, 12). Finally, we note that the structures of HS required to initiate a mitogenic response with FGF-1 and FGF-4 are different from those described above (45). Thus, it appears likely that specific monosaccharide sequences of HS may differentially regulate the biologic effects of FGF family members within the cardiovascular system.

Surprising results have emerged from genetic screens in *Drosophila* that underscore the importance of growth factor regulation by HSPGs at the whole animal level. The Wnts are growth factors known to generate complexes with HS and play an important role in development. The seven membrane spanning Frizzled gene family has been identified recently as the long-sought Wnt receptors, and in vitro depletion of HS from *Drosophila* cells inhibits binding of Wnt 1 to Frizzled as well as suppresses cell signaling (49, 50). A genetic screen to identify new components in the Wnt signaling pathway generated mutant flies with deletions of NST that exhibit a severe developmental malfunction of this system (51). Using a similar approach, saturation mutagenesis was used to identify new effectors involved in cell division patterning in *Drosophila*, which uncovered *dally* mutants with abnormalities in M phase progression (52). The sequencing of wild-type *dally* cDNA reveals an open reading frame extremely homologous to glypican with 14 cysteine residues and several GAG attachment sites as well as a putative GPI anchor. It appears likely that *dally* is a core protein that bears HS and is required for the binding of growth factor needed for normal cell division.

Lipoprotein metabolism and HSPGs

The metabolism of lipoproteins is partially regulated by HSPGs through interactions with lipoprotein lipase (LPL) and apolipoproteins B and E (apoB and apoE). LPL is the rate-limiting enzyme for hydrolysis of triglycerides in very low density lipoproteins as well as chylomicrons and therefore controls the delivery of fatty acids to tissues. In the section below, we describe the modulation of this pathway by HSPGs which provide a conceptual framework for considering the effects of GAGs on other cell surface bound enzymes in the cardiovascular system.

The primary site of action of LPL is the luminal surface of capillary endothelial cells where the enzyme is anchored to HSPGs (53) (Fig. 3). The core proteins involved in this interaction have not been completely defined but the available data are compatible with a major role for syndecan 1 (54). The enzymatically active dimeric LPL binds 6,000-fold more tightly than inactive monomeric enzyme to HSPGs (55). This interaction allows dimeric LPL to be localized on the endothelial cell surface whereas monomeric enzyme enters the blood and is cleared by the liver. The binding of LPL to HSPGs fails to appreciably alter the conformation of the enzyme or its ability to interact with lipoproteins. Thus, LPL is targeted to the appropriate locale to carry out its biologic role without perturbing structural features needed for optimal function. The localization of LPL to the endothelial cell surface may also involve a 116-kD NH₂-terminal region processed form of apoB (NTAB) which contains separate binding domains for LPL and HS. The endothelial cell expression of NTAB may alter the interactions of LPL with HSPGs or apoB containing lipoproteins. The apical anchoring of LPL exposes the enzyme to circulating triglyceride-rich lipoproteins, and the presence of apoE may facilitate binding to endothelial cell HSPGs. The surface bound LPL attaches to lipoproteins, possibly by complexing to apoB, with the cofactor apoCII activating the enzyme. During lipolysis, LPL can dissociate from cell surfaces which makes it unclear whether hydrolysis of triglycerides takes place at the cell surface or within the capillary lumen (for an extensive review see reference 56). Surprisingly, LPL is synthesized predominantly in myocytes and adipocytes, and presumably exchanges between HSPGs of the extracellular matrix to reach the basolateral surface of endothelial cells. At this latter site, the enzyme bound to carrier HSPGs is internalized and transcellularly transported to the apical surface (57). LPL complexed with HSPGs of cell surfaces and extracellular matrix can simultaneously interact with lipoproteins, and such nonenzymatic bridging may affect lipoprotein localization and metabolism. On the one hand, retention of LDL and VLDL within the sub-endothelial space is dependent on the presence of both HSPGs and LPL (58). On the other hand, LPL-dependent degradation of lipoproteins is initiated through uptake by several distinct receptors and, in specific cell types, HSPGs may constitute a major, functionally independent internalization pathway (59–61).

The interaction of HS with dimeric LPL leads to the formation of a 1:1 stoichiometric complex which depends upon specific groups of the enzyme and GAG. Based upon the crystallographic structure of the homologous pancreatic lipase, the front surface of LPL is thought to contain the active site, whereas the back surface is believed to possess four regions of clustered basic residues (62). In particular residues 279–282 and 292–304 (human LPL numeration) show homology to the heparin-binding consensus sequences -X-B-B-X-B-X- and -X-B-B-B-X-X-B-X-, which are comprised of basic (B) and small neutral (X) amino acid residues (63). Mutational analysis demonstrates that Arg²⁷⁹, Arg²⁸⁰, Arg²⁸², Arg²⁹⁶, Arg²⁹⁷, as well as unspecified sites within residues 404–430, are required for binding to HS (64, 65). The sulfate groups of HSPGs are critical for interaction with LPL since the reduction in levels of PAPS, the biochemical sulfate donor, greatly decreases the binding of enzyme to the cell surface (66). In an attempt to define the critical oligosaccharide sequence, HS fragments were subjected to LPL affinity chromatography, which yielded de-

casaccharide that represented 2% of the initial HS mass. These deca-saccharides constitute the minimum size capable of binding dimeric enzyme as efficiently as HS, and are represented by the sequences (IdoA 2S→GlcNS 6S→)₃ and (IdoA 2S→GlcNS 6S→)₃ GlcA→GlcNS 6S→IdoA 2S→GlcNS 6S (67, 68). Detailed biochemical investigations reveal that ionic bonding to LPL only requires 10 of the 20 available negative groups, with nonelectrostatic interactions accounting for 40% of the total binding energy (55). Thus, more in depth structural analyses are required to establish the exact set of ionic and nonionic groups involved in the interaction of HS with LPL.

Blood coagulation and HSPGs

The blood coagulation cascade consists of a series of linked inactive precursor–serine protease transformations which generate thrombin, thereby activating platelets as well as producing fibrin. The various natural anticoagulant mechanisms of the blood vessel wall oppose the action of the blood coagulation cascade and hence prevent thrombotic events. In the section below, we describe the endothelial cell anticoagulant heparan sulfate pathway which accelerates inhibition of coagulation proteases by a circulating plasma protease inhibitor and provides a framework for considering how HSPGs with regions of defined monosaccharide sequence might be generated in other biologic systems.

The plasma protease inhibitor antithrombin (AT) slowly inactivates thrombin (T), Factor Xa, and other coagulation proteases by formation of enzyme–AT complexes (69) (Fig. 3). The binding of the active center of coagulation proteases to the reactive site of AT induces a partial insertion of the amino terminal of the protease inhibitor into its interior, which arrests cleavage of the reactive site bond and traps the enzyme in a stable complex. Heparin induces a conformational alteration in AT by binding to two sets of positively charged residues, and in certain cases augments interactions of protease inhibitor with free enzyme as well as enhances enzyme reactivity. These molecular events dramatically accelerate enzyme–AT complex generation. Once generation of the interaction product is completed, heparin dissociates and then catalyzes additional rounds of enzyme neutralization by plasma inhibitor (69–71; for reviews see references 72 and 73). The affinity fractionation of heparin by AT revealed a small subpopulation of GAG with the unique sequence: →HexA→GlcN(Ac/S) 6S→GlcA→GlcNS 3S 6S→IdoA 2S→GlcNS 6S→ which is mainly responsible for binding protease inhibitor and accelerating Factor Xa inhibition (74–79). The evaluation of individual residues demonstrate that the 6-*O*-sulfate group on residue 2 and the 3-*O*-sulfate group on residue 4 act in a concerted fashion to bind AT and accelerate Factor Xa neutralization (78, 79). The downstream flanking disaccharide, →IdoA 2S→GlcNS 6S→, is also of importance in this process (80). Two additional heparin domains of unknown structure are required for neutralization of thrombin, as well as the remaining coagulation proteases other than Factor Xa. Cultured cloned endothelial cells synthesize small amounts of anticoagulant HSPGs with covalently linked HS possessing the AT binding site, which accelerates enzyme–inhibitor complex formation. The physiologic role of endothelial cell anticoagulant HSPGs has been defined by perfusing rat hindlimbs with T and AT, and showing that T–AT complex generation is dramatically accelerated by a heparan sulfate vessel wall component. The *in vivo* location of anticoagulant HSPGs was ascertained by light and EM level

autoradiography which revealed small amounts of anticoagulant HSPGs on the luminal surface of endothelial cells with much larger quantities deposited in the subendothelial space (for review see reference 81). Thus, it appears likely that coagulation enzyme–AT interactions are dramatically accelerated in normal and damaged blood vessels by anticoagulant HSPGs.

The HS biosynthetic pathway generates limiting amounts of anticoagulant HSPGs with regions of defined structure that contain the AT binding site, and also produces the more abundant nonanticoagulant HSPGs with regions of varying structure that carry out other biologic functions. It has been argued that the amounts of anticoagulant HSPGs generated could not be formed by a completely random process and that the anticoagulant HS biosynthetic mechanism must be ordered. However, the anticoagulant HSPGs are produced by a complex pathway with multiple enzymatic components, and until recently regulation of this process remained obscure. The analyses of cell mutants, created by overexpression of the syndecan-4 core protein or chemical exposure, revealed that anticoagulant HS generation requires a pathway-specific component present in limiting amounts (82, 83). The rate-limiting step was identified by establishing a cell-free system using microsomal conversion activity from wild-type microsomes, and radiolabeled HSPG precursor from microsomes of mutants blocked in anticoagulant HSPG generation (84). The addition of these two extracts results in the production of large amounts of anticoagulant HSPG. Further investigation demonstrated that the concentrations of microsomal conversion activity in many different cell types predicts the cellular levels of anticoagulant HSPG generated. The treatment of radiolabeled wild-type microsomal and cell surface HSPGs with excess microsomal conversion activity transforms a maximum of 35% of total HSPGs into anticoagulant HSPG. This extent of conversion should be contrasted to the existing levels of cell surface anticoagulant HSPG, which average ~1–5% of total HSPGs (84). These investigations provide convincing evidence that microsomal conversion activity represents the limiting intracellular component that transforms small amounts of an HSPG precursor population into anticoagulant HSPGs.

The above assay system was then used to isolate the limiting factor which proved to be the long sought glucosaminyl 3-*O*-sulfotransferase (3-OST-1, see previous section) (29). This enzyme is present in trace amounts, as compared with other HS biosynthetic enzymes, and sulfates six sites per GAG chain to generate either anticoagulant or nonanticoagulant HS. Detailed analyses show that the sulfated sequence in both precursor populations is a tetrasaccharide of similar structure (Fig. 2). Surprisingly, anticoagulant and nonanticoagulant HS differ mainly in the downstream disaccharide which must contain →IdoA 2S→GlcNS 6S→ to interact tightly with AT. The invariant presence of this disaccharide in AT binding sites of anticoagulant HS tagged with 3-*O*-sulfated glucosamine and the absence of this disaccharide in the alternate sites of nonanticoagulant HS labeled with 3-*O*-sulfated glucosamine reveal an ordered biosynthetic pathway for assembling precursor populations. Thus, the HS biosynthetic enzymes other than 3-OST-1 generate two types of precursors with differing monosaccharide sequences that are sulfated by 3-OST-1 to a limited extent to produce anticoagulant and nonanticoagulant HS. Indeed, the selective overexpression of 3-OST-1 in two different non-endothelial cell types dramatically augments the levels of anticoagulant HS. Therefore, to a major extent, the generation of

anticoagulant HS is controlled by the intracellular levels of a 3-OST isoform which sulfates specific sites in precursor GAGs depending upon the neighboring monosaccharide sequence. We note that 3-OST-2 or 3-OST-3, neither of which appears to be present in endothelial cells, sulfates precursor HS at other sites and hence produces GAGs with potential interaction sites for biologic targets other than AT. It is of interest that HS modified by the latter 3-OST isoforms has been identified in the glomerular basement membrane where it has been hypothesized to be involved in regulating permeability to proteins (85, 86).

Conclusions

We have summarized recent advances in our knowledge of HSGPs, which demonstrate that covalently linked HS with regions of defined monosaccharide sequence interact with receptors and proteins to regulate different biologic functions. Indeed, given the various cellular processes thought to be controlled by GAGs, one should anticipate the existence of numerous discrete HS sequences. However, it remains unclear how the biosynthetic mechanism is able to generate and specifically regulate the concentrations of each of these components. Based upon available data, we speculate that the various classes of sulfotransferases exist as multiple isoforms, each able to recognize and modify slightly different monosaccharide sequences. Cell type-specific expression of these isoforms would then dictate the synthesis of a particular array of GAGs. The actual levels of a given HS population with regions of defined monosaccharide sequence could then be regulated by controlling the concentrations/activities of key enzymes present in limiting amount. The validation of this hypothesis, or the development of alternative models, will require improved approaches for separating HS into functionally discrete components, more powerful methods for sequencing GAGs, and the availability of enzyme cDNAs to allow genetic manipulation of biosynthetic pathways. Recent progress in these three areas suggests that the mechanisms for controlling the diversity of HSPGs will be delineated over the next few years. Success in this endeavor should provide us with novel insights into the regulation of different biologic functions, and lead to the development of new therapeutic approaches for cardiovascular disorders.

Acknowledgments

Apologies to all our colleagues whose experiments were not cited for lack of space.

The studies cited from this laboratory were supported by the National Institutes of Health (HL41484).

References

1. Simionescu, M., N. Simionescu, J.E. Sibert, and G.E. Palade. 1981. Differentiated microdomains on the luminal surface of the capillary endothelium. II. Partial characterization of their anionic sites. *J. Cell Biol.* 90:614–621.
2. Conrad, H.E. 1989. Structure of heparan sulfate and dermatan sulfate. *Ann. NY Acad. Sci.* 556:18–28.
3. Yanagishita, M., and V.C. Hascall. 1992. Cell surface heparan sulfate proteoglycans. *J. Biol. Chem.* 267:9451–9454.
4. Nathan, A., M.A. Nugent, and E.R. Edelman. 1995. Tissue engineered perivascular endothelial cell implants regulate vascular injury. *Proc. Natl. Acad. Sci. USA.* 92:8130–8134.
5. Yost, H.J. 1992. Regulation of vertebrate left-right symmetries by extracellular matrix. *Nature (Lond.)*. 357:158–161.
6. Sanderson, R.D., J.E. Turnbull, J.T. Gallagher, and A.D. Lander. 1994. Structure of heparan sulfate regulates proteoglycan function and cell behavior.

- J. Biol. Chem.* 269:13100–13106.
7. Guyton, J.R., R.D. Rosenberg, A.W. Clowes, and M.J. Karnovsky. 1980. Inhibition of rat arterial smooth muscle cell proliferation by heparin. In vivo studies with anticoagulant and nonanticoagulant heparin. *Circ. Res.* 46:625–634.
8. Itoh, K., and S.Y. Sokol. 1994. Heparan sulfate proteoglycans are required for mesoderm formation in *Xenopus* embryos. *Development (Camb.)*. 120:2703–2711.
9. Nikkari, S.T., H.T. Jarvelainen, T.N. Wight, M. Ferguson, and A.W. Clowes. 1994. Smooth muscle cell expression of extracellular matrix genes after arterial injury. *Am. J. Pathol.* 144:1348–1356.
10. Bernfield, M., R. Kokenyesi, M. Kato, M.T. Hinkes, J. Spring, R.L. Gallo, and E.J. Lose. 1992. Biology of the syndecans: a family of transmembrane heparan sulfate proteoglycans. *Annu. Rev. Cell Biol.* 8:365–393.
11. Asundi, V.K., and D.J. Carey. 1995. Self-association of *N*-syndecan (syndecan-3) core protein is mediated by a novel structural motif in the transmembrane domain and ectodomain flanking region. *J. Biol. Chem.* 270:26404–26410.
12. Oh, E.-S., A. Woods, and J.R. Couchman. 1997. Multimerization of the cytoplasmic domain of syndecan-4 is required for its ability to activate protein kinase C. *J. Biol. Chem.* In press.
13. Baci, P.C., and P.F. Goetinck. 1995. Protein kinase C regulates the recruitment of syndecan-4 into focal contacts. *Mol. Biol. Cell.* 6:1503–1513.
14. Carey, D.J., K.M. Bendt, and R.C. Stahl. 1996. The cytoplasmic domain of syndecan-1 is required for cytoskeleton association but not detergent insolubility. Identification of essential cytoplasmic domain residues. *J. Biol. Chem.* 271:15253–15260.
15. Itano, N., K. Oguri, Y. Nagayasu, Y. Kusano, H. Nakanishi, G. David, and M. Okayama. 1996. Phosphorylation of a membrane-intercalated proteoglycan, syndecan-2, expressed in a stroma-inducing clone from a mouse Lewis lung carcinoma. *Biochem. J.* 315:925–930.
16. Weksberg, R., J.A. Squire, and D.M. Templeton. 1996. Glypicans: a growing trend. *Nat. Genet.* 12:225–227.
17. Mertens, G., B. Van der Schueren, H. van den Berghe, and G. David. 1996. Heparan sulfate expression in polarized epithelial cells. The apical sorting of glypican (GPI-anchored proteoglycan) is inversely related to its heparan sulfate content. *J. Cell Biol.* 132:487–497.
18. Noonan, D.M., A. Fulle, P. Valente, S. Cai, E. Horigan, M. Sasaki, Y. Yamada, and J.R. Hassell. 1991. The complete sequence of perlecan, a basement membrane heparan sulfate proteoglycan, reveals extensive similarity with laminin A chain, low density lipoprotein-receptor, and the neural cell adhesion molecule. *J. Biol. Chem.* 266:22939–22947.
19. Murdoch, A.D., G.R. Dodge, I. Cohen, R.S. Tuan, and R.V. Iozzo. 1992. Primary structure of the human heparan sulfate proteoglycan from basement membrane (HSPG2/perlecan). A chimeric molecule with multiple domains homologous to the low density lipoprotein receptor, laminin, neural cell adhesion molecules, and epidermal growth factor. *J. Biol. Chem.* 267:8544–8557.
20. Sugahara, K., H. Tsuda, K. Yoshida, S. Yamada, T. de Beer, and J.F. Vliedgenhart. 1995. Structure determination of the octa- and decasaccharide sequences isolated from the carbohydrate-protein linkage region of porcine intestinal heparin. *J. Biol. Chem.* 270:22914–22923.
21. Esko, J.D., and L. Zhang. 1996. Influence of core protein sequence on glycosaminoglycan assembly. *Curr. Opin. Struct. Biol.* 6:663–670.
22. David, G., V. Lories, B. Decock, P. Marynen, J.-J. Cassiman, and H. Van den Berghe. 1990. Molecular cloning of a phosphatidylinositol-anchored membrane heparan sulfate proteoglycan from human lung fibroblasts. *J. Cell Biol.* 111:3165–3176.
23. Dolan, M., T. Horchar, B. Rigatti, and J.R. Hassell. 1997. Identification of sites in domain I of perlecan that regulate heparan sulfate synthesis. *J. Biol. Chem.* 272:4316–4322.
24. Shworak, N.W., M. Shirakawa, R.C. Mulligan, and R.D. Rosenberg. 1994. Characterization of ryudocan glycosaminoglycan acceptor sites. *J. Biol. Chem.* 269:21204–21214.
25. Lindahl, U. 1989. Biosynthesis of heparin and related polysaccharides. In *Heparin, Chemical and Biological Properties: Clinical Applications*. D.A. Lane and U. Lindahl, editors. Edward Arnold, London. 159–191.
26. Lind, T., U. Lindahl, and K. Lidholt. 1993. Biosynthesis of heparin/heparan sulfate. Identification of a 70-kDa protein catalyzing both the D-glucuronosyl- and the N-acetyl-D-glucosaminyltransferase reactions. *J. Biol. Chem.* 268:20706–20708.
27. Kobayashi, M., H. Habuchi, O. Habuchi, M. Saito, and K. Kimata. 1996. Purification and characterization of heparan sulfate 2-sulfotransferase from cultured Chinese hamster ovary cells. *J. Biol. Chem.* 271:7645–7653.
28. Habuchi, H., O. Habuchi, and K. Kimata. 1995. Purification and characterization of heparan sulfate 6-sulfotransferase from the culture medium of Chinese hamster ovary cells. *J. Biol. Chem.* 270:4172–4179.
29. Liu, J., N.W. Shworak, L.M.S. Fritze, J.M. Edelberg, and R.D. Rosenberg. 1996. Purification of heparan sulfate D-glucosaminyl 3-O-sulfotransferase. *J. Biol. Chem.* 271:27072–27082.
30. Orellana, A., C.B. Hirschberg, Z. Wei, S.J. Swiedler, and M. Ishihara. 1994. Molecular cloning and expression of a glycosaminoglycan N-acetylglucosaminyl N-deacetylase/N-sulfotransferase from a heparin-producing cell line.

J. Biol. Chem. 269:2270–2276.

31. Hashimoto, Y., A. Orellana, G. Gil, and C.B. Hirschberg. 1992. Molecular cloning and expression of rat liver *N*-heparan sulfate sulfotransferase. *J. Biol. Chem.* 267:15744–15750.
32. Eriksson, I., D. Sandbäck, B. Ek, U. Lindahl, and L. Kjellén. 1994. cDNA cloning and sequencing of mouse mastocytoma glucosaminyl *N*-deacetylase/*N*-sulfotransferase, an enzyme involved in the biosynthesis of heparin. *J. Biol. Chem.* 269:10438–10443.
33. Nelson, R.M., A. Venot, M.P. Bevilacqua, R.J. Linhardt, and I. Stamenkovic. 1995. Carbohydrate-protein interactions in vascular biology. *Annu. Rev. Cell Dev. Biol.* 11:601–631.
34. Olwin, B.B., and A. Rapraeger. 1992. Repression of myogenic differentiation by aFGF, bFGF, and K-FGF is dependent on cellular heparan sulfate. *J. Cell Biol.* 118:631–639.
35. Ornitz, D.M., and P. Leder. 1992. Ligand specificity and heparin dependence of fibroblast growth factor receptors 1 and 3. *J. Biol. Chem.* 267:16305–16311.
36. Faham, S., R.E. Hileman, J.R. Fromm, R.J. Linhardt, and D.C. Rees. 1996. Heparin structure and interactions with basic fibroblast growth factor. *Science (Wash. DC)*. 271:1116–1120.
37. Ornitz, D.M., A.B. Herr, M. Nilsson, J. Westman, C.-M. Svahn, and G. Waksman. 1995. FGF binding and FGF receptor activation by synthetic heparan-derived di- and trisaccharides. *Science (Wash. DC)*. 268:432–436.
38. Yayon, A., M. Klagsbrun, J.D. Esko, P. Leder, and D.M. Ornitz. 1991. Cell surface, heparin-like molecules are required for binding of basic fibroblast growth factor to its high affinity receptor. *Cell*. 64:841–848.
39. Kan, M., F. Wang, J. Xu, J.W. Crabb, J. Hou, and W.L. McKeehan. 1993. An essential heparin-binding domain in the fibroblast growth factor receptor kinase. *Science (Wash. DC)*. 259:1918–1921.
40. Brickman, Y.G., M.D. Ford, D.H. Small, P.F. Bartlett, and V. Nurchombe. 1995. Heparan sulfates mediate the binding of basic fibroblast growth factor to a specific receptor on neural precursor cells. *J. Biol. Chem.* 270:24941–24948.
41. Habuchi, H., S. Suzuki, T. Saito, T. Tamura, T. Harada, K. Yoshida, and K. Kimata. 1992. Structure of a heparan sulphate oligosaccharide that binds to basic fibroblast growth factor. *Biochem. J.* 285:805–813.
42. Maccarana, M., B. Casu, and U. Lindahl. 1993. Minimal sequence in heparin/heparan sulfate required for binding of basic fibroblast growth factor. *J. Biol. Chem.* 268:23898–23905.
43. Turnbull, J.E., D.G. Fernig, Y. Ke, M.C. Wilkinson, and J.T. Gallagher. 1992. Identification of the basic fibroblast growth factor binding sequence in fibroblast heparan sulfate. *J. Biol. Chem.* 267:10337–10341.
44. Bai, X., and J.D. Esko. 1996. Mutant defective in heparan sulfate hexuronic acid 2-*O*-sulfation. *J. Biol. Chem.* 271:17711–17717.
45. Guimond, S., M. Maccarana, B.B. Olwin, U. Lindahl, and A.C. Rapraeger. 1993. Activating and inhibitory heparin sequences for FGF-2 (basic FGF). Distinct requirements for FGF-1, FGF-2, and FGF-4. *J. Biol. Chem.* 268:23906–23914.
46. Krufka, A., S. Guimond, and A.C. Rapraeger. 1996. Two hierarchies of FGF-2 signaling in heparin: mitogenic stimulation and high-affinity binding/receptor transphosphorylation. *Biochemistry*. 35:11131–11141.
47. Ueno, H., M. Gunn, K. Dell, A.J. Tseng, and L. Williams. 1992. A truncated form of fibroblast growth factor receptor 1 inhibits signal transduction by multiple types of fibroblast growth factor receptor. *J. Biol. Chem.* 267:1470–1476.
48. Aviezer, D., D. Hecht, M. Safran, M. Eisinger, G. David, and A. Yayon. 1994. Perlecan, basal lamina proteoglycan, promotes basic fibroblast growth factor-receptor binding, mitogenesis, and angiogenesis. *Cell*. 79:1005–1013.
49. Perrimon, N. 1996. Serpentine proteins slither into the wingless and hedgehog fields. *Cell*. 86:513–516.
50. Reichsman, F., L. Smith, and S. Cumberledge. 1996. Glycosaminoglycans can modulate extracellular localization of the *wingless* protein and promote signal transduction. *J. Cell Biol.* 135:819–827.
51. Lin, X., U. Haecker, and N. Perrimon. 1996. Mutations in the synthesis of heparan sulfate result in defects of *wg* signaling. Wnt meeting 1996, Stanford University.
52. Nakato, H., T.A. Futch, and S.B. Selleck. 1995. The *division abnormally delayed* (*dally*) gene: a putative integral membrane proteoglycan required for cell division patterning during postembryonic development of the nervous system in *Drosophila*. *Development (Camb.)*. 121:3687–3702.
53. Cheng, C.F., A. Oosta, A. Bensadoun, and R.D. Rosenberg. 1981. Binding of lipoprotein lipase to endothelial cells in culture. *J. Biol. Chem.* 256:12893–12896.
54. Saxena, U., M.G. Klein, and I.J. Goldberg. 1991. Identification and characterization of the endothelial cell surface lipoprotein lipase receptor. *J. Biol. Chem.* 266:17516–17521.
55. Lookene, A., O. Chevreuril, P. Ostergaard, and G. Olivecrona. 1996. Interaction of lipoprotein lipase with heparin fragments and with heparan sulfate: stoichiometry, stabilization, and kinetics. *Biochemistry*. 35:12155–12163.
56. Goldberg, I.J. 1996. Lipoprotein lipase and lipolysis: central roles in lipoprotein metabolism and atherogenesis. *J. Lipid Res.* 37:693–707.
57. Saxena, U., M.G. Klein, and I.J. Goldberg. 1991. Transport of lipoprotein lipase across endothelial cells. *Proc. Natl. Acad. Sci. USA*. 88:2254–2258.
58. Eisenberg, S., E. Sehayek, T. Olivecrona, and I. Vlodavsky. 1992. Lipoprotein lipase enhances binding of lipoproteins to heparan sulfate on cell surfaces and extracellular matrix. *J. Clin. Invest.* 90:2013–2021.
59. Ji, Z.S., S. Fazio, and R.W. Mahley. 1994. Variable heparan sulfate proteoglycan binding of apolipoprotein E variants may modulate the expression of type III hyperlipoproteinemia. *J. Biol. Chem.* 269:13421–13428.
60. Obunike, J.C., I.J. Edwards, S.C. Rumsey, L.K. Curtiss, W.D. Wagner, R.J. Deckelbaum, and I.J. Goldberg. 1994. Cellular differences in lipoprotein lipase-mediated uptake of low density lipoproteins. *J. Biol. Chem.* 269:13129–13135.
61. Fernandez-Borja, M., D. Bellido, E. Vilella, G. Olivecrona, and S. Vilaro. 1996. Lipoprotein lipase-mediated uptake of lipoprotein in human fibroblasts: evidence for an LDL receptor-independent internalization pathway. *J. Lipid Res.* 37:464–481.
62. van Tilbeurgh, H., A. Roussel, J.M. Lalouel, and C. Cambillau. 1994. Lipoprotein lipase. Molecular model based on the pancreatic lipase x-ray structure: consequences for heparin binding and catalysis. *J. Biol. Chem.* 269:4626–4633.
63. Cardin, A.C., and H.R.J. Weintraub. 1989. Molecular modeling of proteoglycan-glycosaminoglycan interactions. *Arteriosclerosis*. 9:21–32.
64. Hata, A., D.N. Ridinger, S. Sutherland, M. Emi, Z. Shuhua, R.L. Myers, K. Ren, T. Cheng, I. Inoue, D.E. Wilson, P.-H. Iverius, and J.-M. Lalouel. 1993. Binding of lipoprotein lipase to heparin. Identification of five critical residues in two distinct segments of the amino-terminal domain. *J. Biol. Chem.* 268:8447–8457.
65. Nielsen, M.S., J. Brejning, R. García, H. Zhang, M.R. Hayden, S. Vilaró, and J. Gliemann. 1997. Segments in the C-terminal folding domain of lipoprotein lipase important for binding to the low density lipoprotein receptor-related protein and to heparan sulfate proteoglycans. *J. Biol. Chem.* 272:5821–5827.
66. Hoogewerf, A.J., L.A. Cisar, D.C. Evans, and A. Bensadoun. 1991. Effect of chlorate on the sulfation of lipoprotein lipase and heparan sulfate proteoglycans. Sulfation of heparan sulfate proteoglycans affects lipoprotein lipase degradation. *J. Biol. Chem.* 266:16564–16571.
67. Parthasarathy, N., I.J. Goldberg, P. Sivaram, B. Mulloy, D.M. Flory, and W.D. Wagner. 1994. Oligosaccharide sequences of endothelial cell surface heparan sulfate proteoglycan with affinity for lipoprotein lipase. *J. Biol. Chem.* 269:22391–22396.
68. Larnkjær, A., A. Nykjær, G. Olivecrona, H. Thøgersen, and P.B. Østergaard. 1995. Structure of heparin fragments with high affinity for lipoprotein lipase and inhibition of lipoprotein lipase binding to alpha 2-macroglobulin-receptor/low-density-lipoprotein-receptor-related protein by heparin fragments. *Biochem. J.* 307:205–214.
69. Rosenberg, R.D., and P.S. Damus. 1973. The purification and mechanism of action of human antithrombin-heparin cofactor. *J. Biol. Chem.* 248:6490–6505.
70. Carrell, R.W., P.E. Stein, G. Fermi, and M.R. Wardell. 1994. Biological implications of a 3 Å structure of dimeric antithrombin. *Structure (Lond.)*. 2:257–270.
71. Gettins, P.G.W., B. Fan, B.C. Crews, and I.V. Turko. 1993. Transmission of conformational change from the heparin binding site to the reactive center of antithrombin. *Biochemistry*. 32:8385–8389.
72. Shworak, N.W., and R.D. Rosenberg. 1995. Antithrombotic defence potential of the blood vessel wall: the heparan sulfate-antithrombin pathway. *In* The Endothelial Cell in Health and Disease. J.R. Vane, G.V.R. Born, and D. Welzel, editors. Schattauer, Stuttgart. 119–146.
73. Olson, S.T., and I. Björk. 1994. Regulation of thrombin activity by antithrombin and heparin. *Semin. Thromb. Hemostasis*. 20:373–409.
74. Lam, L.H., J.E. Silbert, and R.D. Rosenberg. 1976. The separation of active and inactive forms of heparin. *Biochem. Biophys. Res. Commun.* 69:570–577.
75. Rosenberg, R.D., and L. Lam. 1979. Correlation between structure and function of heparin. *Proc. Natl. Acad. Sci. USA*. 76:1218–1222.
76. Lindahl, U., G. Bäckström, L. Thunberg, and I.G. Leder. 1980. Evidence for a 3-*O*-sulfated D-glucosamine residue in the antithrombin-binding sequence of heparin. *Proc. Natl. Acad. Sci. USA*. 77:6551–6555.
77. Choay, J., M. Petitou, J.C. Lormeau, P. Sinaÿ, B. Casu, and G. Gatti. 1983. Structure-activity relationship in heparin: a synthetic pentasaccharide with high affinity for antithrombin III and eliciting high anti-factor Xa activity. *Biochem. Biophys. Res. Commun.* 116:492–499.
78. Atha, D.H., J.C. Lormeau, M. Petitou, R.D. Rosenberg, and J. Choay. 1985. Contribution of monosaccharide residues in heparin binding to antithrombin III. *Biochemistry*. 24:6723–6729.
79. Atha, D.H., J.C. Lormeau, M. Petitou, R.D. Rosenberg, and J. Choay. 1987. Contribution of 3-*O*- and 6-*O*-sulfated glucosamine residues in the heparin-induced conformational change in antithrombin III. *Biochemistry*. 26:6454–6461.
80. Casu, B. 1985. Structure and biological activity of heparin. *Adv. Carbohydr. Chem. Biochem.* 43:51–134.
81. Marcum, J.A., and R.D. Rosenberg. 1989. The biochemistry, cell biology, and pathophysiology of anticoagulant active heparin-like molecules of the vessel wall. *In* Heparin, Chemical and Biological Properties: Clinical Appli-

cations. D.A. Lane and U. Lindahl, editors. Edward Arnold, London. 275–294.

82. Shworak, N.W., M. Shirakawa, S. Collic-Jouault, J. Liu, R.C. Mulligan, L.K. Birinyi, and R.D. Rosenberg. 1994. Pathway-specific regulation of the synthesis of anticoagulant active heparan sulfate. *J. Biol. Chem.* 269:24941–24952.

83. Collic-Jouault, S., N.W. Shworak, J. Liu, A.I. de Agostini, and R.D. Rosenberg. 1994. Characterization of a cell mutant specifically defective in the synthesis of anticoagulant active heparan sulfate. *J. Biol. Chem.* 269:24953–24958.

84. Shworak, N.W., L.M.S. Fritze, J. Liu, L.D. Butler, and R.D. Rosenberg. 1996. Cell-free synthesis of anticoagulant heparan sulfate reveals a limiting activity which modifies a nonlimiting precursor pool. *J. Biol. Chem.* 271:27063–27071.

85. Edge, A.S., and R.G. Spiro. 1990. Characterization of novel sequences containing 3-*O*-sulfated glucosamine in glomerular basement membrane hepa-

ran sulfate and localization of sulfated disaccharides to a peripheral domain. *J. Biol. Chem.* 265:15874–15881.

86. Kanwar, Y.S., A. Linker, and M.G. Farquhar. 1980. Increased permeability of the glomerular basement membrane to ferritin after removal of glycosaminoglycans (heparan sulfate) by enzyme digestion. *J. Cell Biol.* 86:688–693.

87. Ishihara, M., Y. Guo, Z. Wei, Z. Yang, S.J. Swiedler, A. Orellana, and C.B. Hirschberg. 1993. Regulation of biosynthesis of the basic fibroblast growth factor binding domains of heparan sulfate by heparan sulfate-*N*-deacetylase/*N*-sulfotransferase expression. *J. Biol. Chem.* 268:20091–20095.

88. Cheung, W.-F., I. Eriksson, M. Kusche-Gullberg, U. Lindahl, and L. Kjellén. 1996. Expression of the mouse mastocytoma glucosaminyl *N*-deacetylase/*N*-sulfotransferase in human kidney 293 cells results in increased *N*-sulfation of heparan sulfate. *Biochemistry.* 35:5250–5256.

“Cell Adhesion In Vascular Biology”

Series Editors, Mark H. Ginsberg, Zaverio M. Ruggeri, and Ajit P. Varki

October 15, 1996	Adhesion and signaling in vascular cell–cell interactions	Guy Zimmerman, Tom McIntyre, and Stephen Prescott
November 1, 1996	Endothelial adherens junctions: implications in the control of vascular permeability and angiogenesis	Elisabetta Dejana
November 15, 1996	Genetic manipulation of vascular adhesion molecules in mice	Richard O. Hynes and Denisa D. Wagner
December 1, 1996	The extracellular matrix as a cell cycle control element in atherosclerosis and restenosis	Richard K. Assoian and Eugene E. Marcantonio
December 15, 1996	Effects of fluid dynamic forces on vascular cell adhesion.....	Konstantinos Konstantopoulos and Larry V. McIntire
January 1, 1997	The biology of PECAM-1	Peter J. Newman
January 15, 1997	Selectin ligands: Will the real ones please stand up?.....	Ajit Varki
February 1, 1997	Cell adhesion and angiogenesis.....	Joyce Bischoff
February 15, 1997	von Willebrand Factor.....	Zaverio Ruggeri
March 1, 1997	Therapeutic inhibition of carbohydrate–protein interactions in vivo.....	John B. Lowe and Peter A. Ward
March 15, 1997	Integrins and vascular matrix assembly.....	Erkki Ruoslahti
April 1, 1997	Platelet GPIIb/IIIa antagonists: The first anti-integrin receptor therapeutics.....	Barry S. Collier
April 15, 1997	Biomechanical activation: An emerging paradigm in endothelial adhesion biology	Michael A. Gimbrone, Jr., Tobi Nagel, and James N. Topper
May 1, 1997	Heparan sulfate proteoglycans of the cardiovascular system. Specific structures emerge but how is synthesis regulated?.....	Robert D. Rosenberg, Nicholas W. Shworak, Jian Liu, John J. Schwartz, and Lijuan Zhang
May 15, 1997	New insights into integrin-ligand interaction	Robert Liddington and Joseph Loftus
June 1, 1997	Adhesive interactions of Sickle erythrocytes with endothelium	Robert Heibel
June 15, 1997	Cell migration in vascular biology	Stephen Schwartz
July 1, 1997	Integrin signaling in vascular biology	Sanford Shattil and Mark Ginsberg
July 15, 1997	Multi-step mechanisms of leukocyte homing.....	Eugene Butcher
August 1, 1997	Role of PSGL-1 binding to selectins in leukocyte recruitment.....	Rodger McEver and Richard Cummings