

• Original Article

# Spatial assessment of soil contamination by heavy metals from informal electronic waste recycling in Agbogbloshie, Ghana

Vincent Nartey Kyere<sup>1</sup>, Klaus Greve<sup>2</sup>, Sampson M. Atiemo<sup>3</sup>

<sup>1</sup>Center for Development Research (ZEF), University of Bonn, Bonn; <sup>2</sup>Geography Institute, University of Bonn, Bonn, Germany; <sup>3</sup>Ghana Atomic Energy Commission, Accra, Ghana

**Objectives** This study examined the spatial distribution and the extent of soil contamination by heavy metals resulting from primitive, unconventional informal electronic waste recycling in the Agbogbloshie e-waste processing site (AEPS) in Ghana.

**Methods** A total of 132 samples were collected at 100 m intervals, with a handheld global position system used in taking the location data of the soil sample points. Observing all procedural and quality assurance measures, the samples were analyzed for barium (Ba), cadmium (Cd), cobalt (Co), chromium (Cr), copper (Cu), mercury (Hg), nickel (Ni), lead (Pb), and zinc (Zn), using X-ray fluorescence. Using environmental risk indices of contamination factor and degree of contamination ( $C_{deg}$ ), we analyzed the individual contribution of each heavy metal contamination and the overall  $C_{deg}$ . We further used geostatistical techniques of spatial autocorrelation and variability to examine spatial distribution and extent of heavy metal contamination.

**Results** Results from soil analysis showed that heavy metal concentrations were significantly higher than the Canadian Environmental Protection Agency and Dutch environmental standards. In an increasing order,  $Pb > Cd > Hg > Cu > Zn > Cr > Co > Ba > Ni$  contributed significantly to the overall  $C_{deg}$ . Contamination was highest in the main working areas of burning and dismantling sites, indicating the influence of recycling activities. Geostatistical analysis also revealed that heavy metal contamination spreads beyond the main working areas to residential, recreational, farming, and commercial areas.

**Conclusions** Our results show that the studied heavy metals are ubiquitous within AEPS and the significantly high concentration of these metals reflect the contamination factor and  $C_{deg}$ , indicating soil contamination in AEPS with the nine heavy metals studied.

**Keywords** Electronic waste, Geostatistical techniques, Heavy metals, Contamination factor, Degree of contamination

## Introduction

Changing electrical electronic equipment consumer's lifestyle and the ever growing demand for newer and more efficient technologies are contributing to the increasing rate of obsolescence of electrical materials [1,2]. An estimated 41 million tons of electrical electronic equipment waste, also known as electronic waste (e-waste), were generated globally in 2014 [3]. Fifty to

eighty percent of electrical electronic equipment meant for disposal and recycling in developed countries are either legally or illegally shipped to developing countries under the disguise of slightly used or charity materials [4]. Some of these equipment end up in informal recycling sites where primitive recycling methods, such as the open burning of cables, fridge, and television casings, are performed, exposing the environment and entire communities to pollution [5]. Contamination of the envi-

Correspondence: Vincent Nartey Kyere  
3 Walter Flex Strasse, Bonn 53113, Germany  
Tel: +49-15218672980  
Fax: +49-228731869  
E-mail: kyerevincent@gmail.com

Received: January 22, 2016  
Accepted: March 11, 2016  
Published: March 17, 2016

This article is available from: <http://e-eh.t.org/>

ronment due to uncontrolled e-waste recycling has been reported in Ghana and particularly Ghana's largest e-waste recycling area Agbogbloshie [6-10]. The contamination of the environment is driven by increased quantities of electrical e-waste in Ghana, which have created avenues and opportunities for individuals to make a living by using unconventional, primitive, and crude recycling methods to recover precious and valuable metals from e-waste. The uncontrolled recycling activities of individuals, especially informal recyclers, and the absence of a well-structured management policy or strategy in Ghana have resulted in pollution of the environment through the release of heavy metals from some of the unconventional recycling methods. This present study seeks to determine qualitatively and quantitatively heavy metal contamination from e-waste processing in Agbogbloshie, Ghana, and further through geostatistical techniques and spatial analysis to examine the spatial extent of heavy metal contamination from e-waste processing in Agbogbloshie. The results of this study can be useful in decision making processes for selecting appropriate remediation measures for contaminated environments and protection of affected communities from potential health hazards.

## Materials and Methods

### Study Area, Sample Collection, and Data Preparation

A total of 132 samples were collected from Agbogbloshie e-waste processing site (AEPS), using a 100 m interval grid based sampling procedure. AEPS is located close to the central business district of Ghana's national capital (Figure S1) and consists of a number of clusters such as burning, dismantling, residential, recreational, commercial, worship, and school sites. Data collection was conducted while observing all standard procedures to avoid cross contamination. The collected samples were air dried at room temperature, sieved through a 100  $\mu\text{m}$  mesh, and pressed into pellets with a diameter of 2.5 cm using a 10-ton hydraulic press. Heavy metal analysis was performed using an X-ray fluorescence (XRF) spectrometer, (at the Department of Geological Survey, Accra, Ghana), at a maximum power of 3000 W (60 Kv and 50 mA). The pelleted samples were placed on a disk which was put on the excitation source of the XRF for a 10-minute irradiation, using a silicon lithium Si (Li) detector with a resolution of 16 V with manganese and potassium alpha peaks throughout the procedure. To validate the procedure and ensure quality, International Atomic Energy Agency (IAEA) standard reference IAEA soil seven was irradiated five times and average values were compared with recommended values before analysis of prepared samples.

### Statistical and Geostatistical Analysis

The study adopted the steps as shown in Figure S2 for the statistical and geostatistical analysis of the heavy metals barium (Ba), cadmium (Cd), cobalt (Co), chromium (Cr), copper (Cu), mercury (Hg), nickel (Ni), lead (Pb), and zinc (Zn) identified in the soil samples. The selection of heavy metals used in our study was based on the criteria defined by the Dutch soil quality and guidance standards for contaminated lands and environmental remediation [11].

#### *Data Preparation and Exploratory Analysis*

Heavy metal concentrations values together with the coordinates were listed in Microsoft Excel 2013 (Microsoft Co., Redmond, WA, USA) and exploratory analysis of descriptive variables, normality, and correlation between heavy metals were performed using R.3.2.1 software.

#### *Trend Analysis and Variogram Construction*

Trend analysis was performed using ArcGIS 10.1 to identify global trends or patterns which have to be taken into account before applying geostatistical interpolation. Variogram models and the global Moran's index were used to examine spatial autocorrelation and spatial variability of heavy metals. Spatial variability of the data was also assessed for each heavy metal using semivariogram or entropy voronoi maps before prediction or kriging of the data [12]. Exponential, spherical, and K-Bessel models were chosen as they obtained the best fit in the assessment of spatial autocorrelation for the heavy metal variables. The sill, nugget, and range for each of the models (exponential, K-Bessel and spherical) were also explored to ascertain variability and spatial dependency of the heavy metal dataset.

#### *Kriging and Cross Validation*

The final step in the geostatistical data analysis was kriging. With data not indicating any direction and no local drift or trend in the data set, anisotropic kriging, universal kriging, and co-kriging procedures were avoided in the prediction. The ordinary kriging process was performed on the degree of heavy metal contamination.

### Contamination Assessment

There are three categories of heavy metal assessment indices [13], which include (a) contamination indices [14] and metal enrichment index, (b) background enrichment indices [15]; index of geoaccumulation [16], contamination factor (CF) and degree of contamination ( $C_{\text{deg}}$ ) [17], and (c) ecological risk indices [18]. For the purpose and objectives of this study, the CF and  $C_{\text{deg}}$  were chosen over the other indices for the following

reasons:

CF and  $C_{deg}$  indices overcome the requirement of using a suitable location for background concentration value by using continental crust average as specified in [17].

The  $C_{deg}$  complimented by the CF provides a comprehensive picture of a particular site by aggregating individual heavy metal toxicity as single contamination index while pollution, metal enrichment, enrichment indices, and index of geoaccumulation are only suitable for evaluating single elements.

The CF and the  $C_{deg}$  have been used over the years to assess or ascertain the extent of heavy metal contamination of soils by comparing the results for the contaminants with different reference or background levels [7,19–21]. The CF which evaluates environmental pollution by single substances is expressed as:

$$C_f^i = \frac{C_{0-1}^i}{C_n^i}$$

where  $C_f^i$  is the CF of the element of interest;  $C_{0-1}^i$  is the concentration of the element in the sample;  $C_n^i$  is the background concentration or the continental crustal average as was used by Muller [17]. The classification for contamination ranges from  $CF < 1$  as low CF;  $1 < CF \leq 3$  as moderate CF;  $3 < CF \leq 6$  as considerable CF and  $CF > 6$  very high CF. Complementing the CF is the  $C_{deg}$ , which is the sum of CFs and describes the contamination of the environment by all examined substances, further defining the quality of the environment. The  $C_{deg}$  is expressed as:

$$C_{deg} = \sum C_f^i$$

The  $C_{deg}$  is useful to identify hot spots within the sampling location. It is also categorized into four stages, such as  $C_{deg} < 8$  implying a low,  $C_{deg} 8 \leq C_{deg} < 16$  indicating a moderate  $C_{deg}$ ,  $16 \leq C_{deg} < 32$  indicating a considerable  $C_{deg}$ , and  $C_{deg} \geq 32$  indicating a very high  $C_{deg}$ .

## Results

### Descriptive Parameters of Heavy Metals Within Study Area

To evaluate the raw data set, we calculated the descriptive statistics of mean, median, standard deviation, skewness, and coefficient of variation (CV) (Table 1). The concentrations of the heavy metals Ba, Cd, Co, Cr, Cu, Hg, Ni, Pb, and Zn under investigation were extended over several orders of magnitudes. Compared with the Dutch and the Canadian Environmental Quality Standards for Soils, the mean values of Ba, Cu, Pb, and Zn were above both the optimal and action values of the Dutch and Canadian Soil Quality Guidance Values (SQGV) while those of Cd, Co, Hg, and Ni had mean values below action required values of SQGV. The skewness values for Co, Cd, Cr, and Hg were relatively low, however, those for Ba, Pb, Zn, Cu, and Ni were high, indicating non-normality of the data set for these heavy metals. Further, CV values of Ni, Pb, Cu, and Zn were 6.05, 1.82, 1.81, and 1.40, respectively, and higher than those of Ba, Co, Cr, Cd, and Hg, suggesting that Ni, Pb, Cu, and Zn had greater variation among soils within the study area.

Table 1 also shows the mean CF for each of the heavy metals, indicating toxicity contribution. CFs of Ba, Co, Cr and Ni were within the moderate CFs while that of Cd, Cu, Hg, Pb and Zn were approximately 5, 4, 5, 11 and 3 times respectively within the high CF classification.

### Correlation Between Heavy Metals

Table 2 shows the correlations between heavy metals. Our results indicate significant correlation at  $p < 0.05$  of Ba with all heavy metals apart from Ni and Pb. Cd also showed significant correlation at  $p < 0.05$  with all other heavy metals apart from Cr and Ni, while Co showed significant correlation at  $p < 0.05$  with Cr, Cu, Hg, and Zn, but weakly correlated with Ni and Pb. Table 2 shows

**Table 1.** Summary statistics of heavy metal concentrations in soil

Heavy metal	Mean	Median	Minimum	Maximum	SD	CV	Skewness	Mean CF	Dutch SQGV		Canadian SQGV
									Optimal	Action	
Ba	627.7	574.0	120.6	2635	339.1	0.54	1.88	1.46	200	625	500
Cd	6.6	3.9	0.4	26.5	6.8	1.04	1.35	32.80	1	12	10
Co	46.6	35.3	8.8	153.7	29.2	0.63	1.12	1.86	20	240	-
Cr	296.6	197.3	21.1	1332	273.3	0.92	1.57	2.94	100	380	64
Cu	1387.9	290.7	9.4	18285	2507.2	1.81	3.70	23.11	36	190	63
Hg	2.7	1.4	0.4	13.4	2.9	1.07	2.03	32.61	0.3	10	7
Ni	61.7	13.9	0.6	4003	373.4	6.05	10.59	0.37	35	210	50
Pb	953.2	290.9	14.2	10280	1734.8	1.82	3.29	70.25	85	530	140
Zn	1371.1	576.6	41.9	12907.5	1923.8	1.40	3.07	17.85	140	720	200

Concentration values are measured in ppm.

SD, standard deviation; CV, coefficient of variation; CF, contamination factor; SQGV, soil quality and guidance values; Ba, barium; Cd, cadmium; Co, cobalt; Cr, chromium; Cu, copper; Hg, mercury; Ni, nickel; Pb, lead; Zn, zinc.

**Table 2.** Correlation between heavy metal concentrations in soil at AEPS

Heavy metal	Ba	Cd	Co	Cr	Cu	Hg	Ni	Pb	Zn
Ba	1								
Cd	0.712*	1							
Co	0.748*	0.599*	1						
Cr	0.604*	0.356	0.549*	1					
Cu	0.449*	0.761*	0.435*	0.042	1				
Hg	0.602*	0.804*	0.563*	0.190	0.855*	1			
Ni	0.115	0.050	0.328	0.001	0.181	0.472*	1		
Pb	0.341	0.724*	0.266	-0.139	0.903*	0.874*	0.250	1	
Zn	0.549*	0.767*	0.598*	0.252	0.856*	0.778*	0.140	0.775*	1

AEPS, Agbogbloshie electronic waste processing site; Ba, barium; Cd, cadmium; Co, cobalt; Cr, chromium; Cu, copper; Hg, mercury; Ni, nickel; Pb, lead; Zn, zinc. \* $p < 0.05$ .

**Table 3.** Summary statistics and geostatistical parameters for degree of contamination

Contamination assessment								
Summary statistics	Mean	Median	SD	Minimum	Maximum	CV	Skewness	Kurtosis
	158.68	63.21	222.42	3.36	968.01	1.41	2.13	4.14
Spatial autocorrelation	MI	EV	Variance	Z-score	$p$ -value	DT		
	0.175	-0.008	0.006	2.362	0.02	500		
Geostatistical characteristics	Model	Nugget (Co)	Sill (C1)	Co/C1	Range			
	Spherical	0.219	1.022	0.214	851.49			
	Exponential	0.288	0.911	0.317	1057.40			
	Gaussian	0.350	0.898	0.390	712.01			
	K-Bessel	0.344	0.916	0.375	753.10			

SD, standard deviation; CV, coefficient of variation; MI, Moran index; EV, error variance; DT, distance threshold.

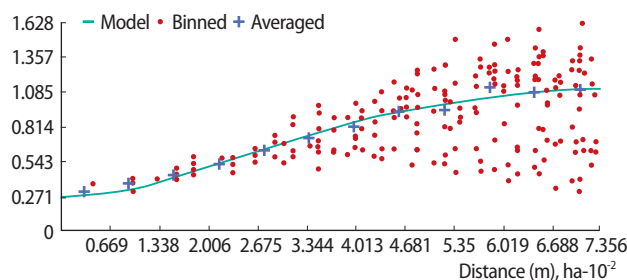
that Ni only correlated significantly with Hg and weakly with all other heavy metals. The weak correlation of Cr and Ni with other heavy metals indicates sources of Cr and Ni independent of the other heavy metals, while the closely significant correlation between Ba, Cd, Co, Cu, Pb, and Zn indicates a source of similar origin or activity (such as Pb in printed circuit boards, Ba, Cd, Pb, Zn in cathode ray tube and batteries, Cu in cables and transformer coils, which are the main devices processed at AEPS).

### Contamination Assessment

To describe the extent of contamination and to examine the toxicity of the metals under investigation, we calculated the  $C_{deg}$  as the sum of all CFs for each element present at a site or location. The mean  $C_{deg}$  was 158.68, indicating a very high contamination. The calculation of the  $C_{deg}$  also revealed a 1.41 CV, indicating high variability in the  $C_{deg}$ , and a skewness value of 2.13, showing a non-normal distribution and positively skewed data of the  $C_{deg}$  (Table 3).

### Geostatistical and Spatial Distribution of Degree of Contamination

Geostatistical and spatial distribution assessment revealed spatial autocorrelation with a Moran's index at a z-score of 2.362



**Figure 1.** Isotropic semivariogram fitted with spherical model.

and a  $p$ -value less than 0.05 (Table 3), indicating that the dataset was spatially related and that both human induced and natural activities contributed to the high  $C_{deg}$ .

### Spatial Structure of Degree of Contamination

The spatial structure and spatial variation of the  $C_{deg}$  were further revealed by the variogram cloud (Figure S3A) and the entropy voronoi map (Figure S3B). The variogram cloud showed the best correlation in the northeast and southwest directions, indicating an omnidirectional orientation and thus isotropy in the  $C_{deg}$ . Figure S3B shows the spatial variation in the  $C_{deg}$ . Dark and light green areas indicate little variation, while orange and dark red indicate greater variation. The map roughly indicates stationarity in the  $C_{deg}$ .

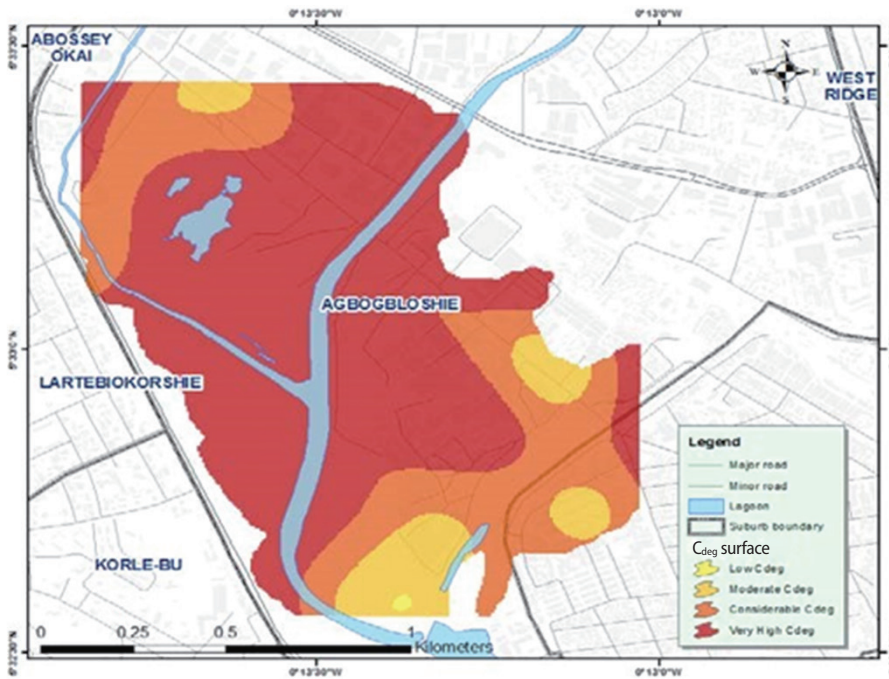


**Table 4.** Degree of contamination ( $C_{deg}$ ) and mean concentration of heavy metals per site in AEPS

Site	Ba	Cd	Co	Cr	Cu	Hg	Ni	Pb	Zn	$C_{deg}$
Burning	641.5	10.1	43.8	171.5	2967.8	3.5	21.8	2666.4	1887.2	393.4
Dismantling	785.7	7.8	66.1	419.2	1643.5	1.6	44.6	846.8	1939.2	193.5
Residential	658.1	2.6	51.5	153.9	1354.6	1.6	27.2	896.1	1170.4	152.2
Recreational	443.7	1.9	36.5	338.6	762.9	0.5	14.8	355.2	700.3	74.2
Commercial area	493.6	0.6	29.6	290.9	157.7	0.3	6.2	163.9	516.9	36.2
Worship	783.9	0.3	30.5	184.6	118.2	0.4	4.9	117.0	419.9	29.4
Farm	315.4	0.2	23.7	319.2	91.4	0.5	4.9	143.5	271.2	29.1
School	394.3	0.3	42.3	118.8	47.6	0.6	2.2	111.3	293.2	25.9
Clinic	581.1	-	28.5	119.3	40.7	-	-	55.8	220.5	12.0

Concentration values are measured in ppm.

AEPS, Agboglobshie electronic waste processing site; Ba, barium; Cd, cadmium; Co, cobalt; Cr, chromium; Cu, copper; Hg, mercury; Ni, nickel; Pb, lead; Zn, zinc.



**Figure 2.** Spatial distribution map for degree of contamination ( $C_{deg}$ ).

The isotropic semivariogram model for the  $C_{deg}$  exhibited a very good structure, which was best fitted with a spherical model in ArcGIS 10.1 (Figure 1). The model resulted in the following model parameters: a nugget value of 0.219, a sill of 1.022, and a range of 851.49 meters (Table 3). While a smaller nugget value reveals that the sample density is adequate to a good spatial structure, the nugget to sill ratio, which if less than 25%, reveals strong spatial dependence of the variable; values between 25% and 75% indicate moderate spatial dependence and at values greater than 75%, the  $C_{deg}$  variable shows a nugget to sill ratio of 0.214 (that is 21.4%, indicating moderate spatial dependence of the  $C_{deg}$  dataset). Furthermore, a range of 851.49 also indicated that the length at which the data maintain spatial autocorrelation was longer than the general sampling interval of 100 meters.

### Spatial Distribution Map of Degree of Contamination

With the data on the  $C_{deg}$  exhibiting spatial autocorrelation, being stationary, omnidirectional (that is isotropic), and showing moderate spatial dependency, simple kriging was used to interpolate the surface and was subsequently classified according to the  $C_{deg}$  categories. Figure 2 shows the spatial distribution and extent at which AEPS is contaminated. For the purpose of examining the  $C_{deg}$ , the kriged surface was reclassified according to the  $C_{deg}$  set by Meza-Figueroa et al. [16]. The red areas in Figure 2 indicate highly contaminated sites within the study area.

Based on the cluster of areas such as burning, dismantling, recreational, residential, etc., an assessment of the  $C_{deg}$  within AEPS is presented in Table 4. Table 4 shows mean heavy metal concentrations in ppm and the  $C_{deg}$  per site. With reference to the  $C_{deg}$  caused by heavy metals per site, the result indicates burn-

ing > dismantling > residential > recreational > commercial area > worship > farm > school > clinic in a descending order of degree or extent of heavy metal contamination. The extremely high values recorded for the burning and dismantling sites could be due to the intensity of activities by informal e-waste recyclers in these areas; a similar trend was reported by previous studies [22–25]. The remaining sequence/order is residential > recreational > commercial > worship > farm > school > clinic could be attributed to the proximity of these areas to the main burning and dismantling sites of informal recyclers.

## Discussion

The CF shows the contribution of each of the heavy metals to the  $C_{deg}$ ; it shows Zn, Cu, Hg, Cd, and Pb in an increasing order as contributing immensely to the  $C_{deg}$ . The kriged map for the  $C_{deg}$  estimated on the basis of the CF and reference or background values is consistent with similar studies [7,16,18,26]. The  $C_{deg}$  map showed most of the areas within AEPS, which consists of burning, dismantling, residential, recreational, commercial, worship centers, and school were highly or severely contaminated with the studied heavy metals. A further assessment of the spatial distribution map revealed 66%, representing 110 ha of the land area, classified as severely contaminated, while 25% (42 ha), 8% (14 ha), and less than 1% classified as considerably, moderately, and slightly contaminated, respectively. The significantly high  $C_{deg}$ , spatial autocorrelation, and spatial random variance in the  $C_{deg}$  indicate anthropogenic influence, i.e., e-waste recycling activities. Hereby, school, residential, market, farm, and worship areas are of particular concern as children spend a considerable amount of time there. Heavy metals, in particular Pb and Cd, can cross the blood brain barriers of children, exerting toxic or hazardous effects which might result in a low IQ and developmental disorders; in children and adults, heavy metals can also cause cancer [7,27,28].

The spatial assessment of soil contamination from an informal e-waste recycling site in Agbogbloshie was undertaken by examining levels of heavy metals and the spatial extent of heavy metal contamination as possible environmental impacts of e-waste recycling activities. The study concludes that nine heavy metals, namely Ba, Cd, Co, Cr, Cu, Hg, Ni, Pb, and Zn were ubiquitous within AEPS and that heavy metal concentrations in soils from the study exceeded the optimal and action requiring limits of both the Dutch and Canadian SQGV by 10 to 1000 times. These high heavy metal concentrations indicate pollution of AEPS with these nine heavy metals, in particular with Cd, Cu, Hg, Pb, and Zn. In addition, kriging requirements of normality, spatial variation, and autocorrelation were met before predic-

tion of spatial distribution maps, which revealed the contamination of the study area to an extent beyond just the main working areas of dismantling and burning sites to areas close to schools, the clinic, residential, and worship premises. The concentrations of these heavy metals and the spatial extent of their distribution poses an ecological risk for humans and other terrestrial and aquatic species at AEPS; therefore, further research of potential ecological and human health risks of informal e-recycling is needed.

## Acknowledgements

We sincerely thank the Centre for Development Research, University of Bonn, for funding the data collection and laboratory analysis of the soil samples. We also thank the Ghana Atomic Energy Commission and the Geological Surveys Department, Accra, Ghana, for conducting the laboratory analyses. The Katholischer Akademischer Ausländer-Dienst and the Catholic University College of Ghana provided a monthly stipend to Vincent Nartey Kyere.

## Conflict of Interest

The authors have no conflicts of interest associated with the material presented in this paper.

## ORCID

Vincent Nartey Kyere <http://orcid.org/0000-0002-8727-6442>

## References

1. Yang Y, Williams E. Logistic model-based forecast of sales and generation of obsolete computers in the U.S. *Technol Forecast Soc Change* 2009;76(8):1105–1114.
2. Yu J, Williams E, Ju M, Yang Y. Forecasting global generation of obsolete personal computers. *Environ Sci Technol* 2010;44(9):3232–3237.
3. Solving the E-waste Problem. Annual report 2013/ 2014 [cited 2015 Jun 22]. Available from: [http://www.step-initiative.org/files/step-2014/Publications/Step\\_ARs/2013\\_14/step\(1\)/flipview-erexpress.html](http://www.step-initiative.org/files/step-2014/Publications/Step_ARs/2013_14/step(1)/flipview-erexpress.html).
4. United Nations Environment Programme. E-waste, the hidden side of IT equipment's manufacturing and use; 2005 [cited 2015 Jun 22]. Available from: [http://www.grid.unep.ch/products/3\\_Reports/ew\\_ewaste.en.pdf](http://www.grid.unep.ch/products/3_Reports/ew_ewaste.en.pdf).
5. Lundgren K. The global impact of e-waste: addressing the challenge. Geneva: International Labour Office; 2012, p. 72.
6. Caravanos J, Clark E, Fuller R, Lambertson C. Assessing worker and environmental chemical exposure risks at an e-waste recycling and disposal site in Accra, Ghana. *J Health Pollut* 2011;1(1):16–25.

7. Atiemo SM, Ofosu FG, Aboh IK, Kuranchie-Mensah H. Assessing the heavy metals contamination of surface dust from waste electrical and electronic equipment (e-waste) recycling site in Accra, Ghana. *Res J Environ Earth Sci* 2012;4(5):605-611.
8. Otsuka M, Itai T, Asante KA, Muto M, Tanabe S. Trace element contamination around the e-waste recycling site at Agbogbloshie, Accra City, Ghana. *Interdiscip Stud Environ Chem Environ Pollut Ecotoxicol* 2012;6:161-167.
9. Asante KA, Agusa T, Biney CA, Agyekum WA, Bello M, Otsuka M, et al. Multi-trace element levels and arsenic speciation in urine of e-waste recycling workers from Agbogbloshie, Accra in Ghana. *Sci Total Environ* 2012;424:63-73.
10. Itai T, Otsuka M, Asante KA, Muto M, Opoku-Ankomah Y, Ansa-Asare OD, et al. Variation and distribution of metals and metalloids in soil/ash mixtures from Agbogbloshie e-waste recycling site in Accra, Ghana. *Sci Total Environ* 2014;470-471:707-716.
11. Ministry of Housing, Spatial Planning and Environment. Dutch target and intervention values, 2000 (the new Dutch list) [cited 2016 Jul 11]. Available from: [http://www.esdat.net/Environmental%20Standards/Dutch/annexS\\_I2000Dutch%20Environmental%20Standards.pdf](http://www.esdat.net/Environmental%20Standards/Dutch/annexS_I2000Dutch%20Environmental%20Standards.pdf).
12. Cahn MD, Hummel JW, Brouer BH. Spatial analysis of soil fertility for site-specific crop management. *Soil Sci Soc Am J* 1994; 58(4):1240-1248.
13. Kerry R, Oliver MA. Average variograms to guide soil sampling. *Int J Appl Earth Obs Geoinf* 2004;5(4):307-325.
14. Caeiro S, Costa MH, Ramos TB, Fernandes F, Silveira N, Coimbra A, et al. Assessing heavy metal contamination in Sado Estuary sediment: an index analysis approach. *Ecol Indic* 2005;5(2):151-169.
15. Ott WR. Environmental indices: theory and practice. Ann Arbor: Ann Arbor Science; 1978.
16. Meza-Figueroa D, De la O-Villanueva M, De la Parra ML. Heavy metal distribution in dust from elementary schools in Hermosillo, Sonora, México. *Atmos Environ* 2007;41(2):276-288.
17. Muller G. Index of geoaccumulation in sediments of the Rhine River. *Geol J* 1969;2(3):108-118.
18. Taylor SR, McLennan SM. The continental crust: its composition and evolution. *Geol Mag* 1985;122(6):673-674.
19. Hakanson L. An ecological risk index for aquatic pollution control. A sedimentological approach. *Water Res* 1980;14(8):975-1001.
20. Loska K, Cebula J, Pelczar J, Wiechula D, Kwapuliński J. Use of enrichment and contamination factors together with geoaccumulation indexes to evaluate the content of Cd, Cu, and Ni in the Rybnik water reservoir in Poland. *Water Air Soil Pollut* 1997;93(1): 347-365.
21. Loska K, Wiechula D, Korus I. Metal contamination of farming soils affected by industry. *Environ Int* 2004;30(2):159-165.
22. Liu WH, Zhao JZ, Ouyang ZY, Söderlund L, Liu GH. Impacts of sewage irrigation on heavy metal distribution and contamination in Beijing, China. *Environ Int* 2005;31(6):805-812.
23. Leung A, Cai ZW, Wong MH. Environmental contamination from electronic waste recycling at Guiyu, southeast China. *J Mater Cycles Waste Manag* 2006;8(1):21-33.
24. Wong CS, Wu SC, Duzgoren-Aydin NS, Aydin A, Wong MH. Trace metal contamination of sediments in an e-waste processing village in China. *Environ Pollut* 2007;145(2):434-442.
25. Wong CS, Duzgoren-Aydin NS, Aydin A, Wong MH. Evidence of excessive releases of metals from primitive e-waste processing in Guiyu, China. *Environ Pollut* 2007;148(1):62-72.
26. Leung AO, Duzgoren-Aydin NS, Cheung KC, Wong MH. Heavy metals concentrations of surface dust from e-waste recycling and its human health implications in southeast China. *Environ Sci Technol* 2008;42(7):2674-2680.
27. Lu X, Wang L, Lei K, Huang J, Zhai Y. Contamination assessment of copper, lead, zinc, manganese and nickel in street dust of Baoji, NW China. *J Hazard Mater* 2009;161(2-3):1058-1062.
28. Frazzoli C, Orisakwe OE, Dragone R, Mantovani A. Diagnostic health risk assessment of electronic waste on the general population in developing countries' scenarios. *Environ Impact Assess Rev* 2010;30(6):388-399.
29. Riederer AM, Adrian S, Kuehr R. Assessing the health effects of informal e-waste processing. *J Health Pollut* 2013;3(4):1-3.

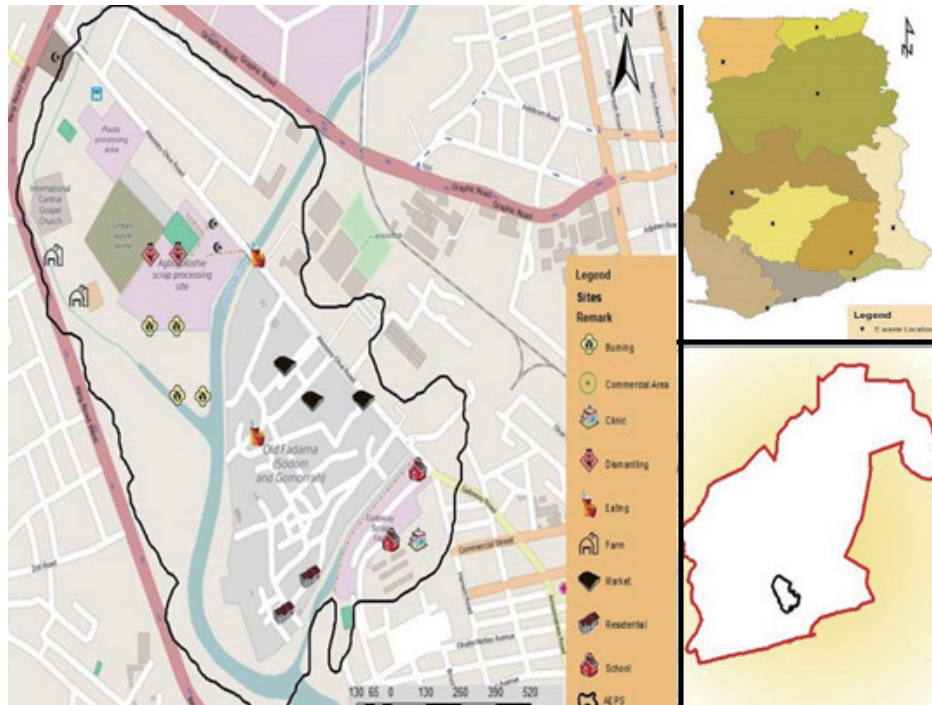
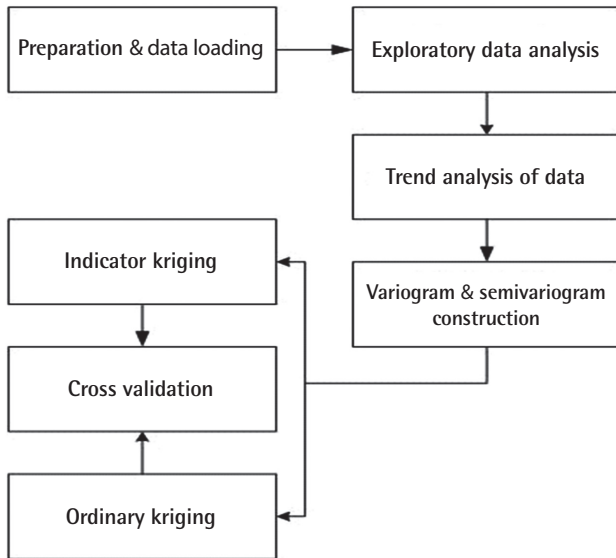
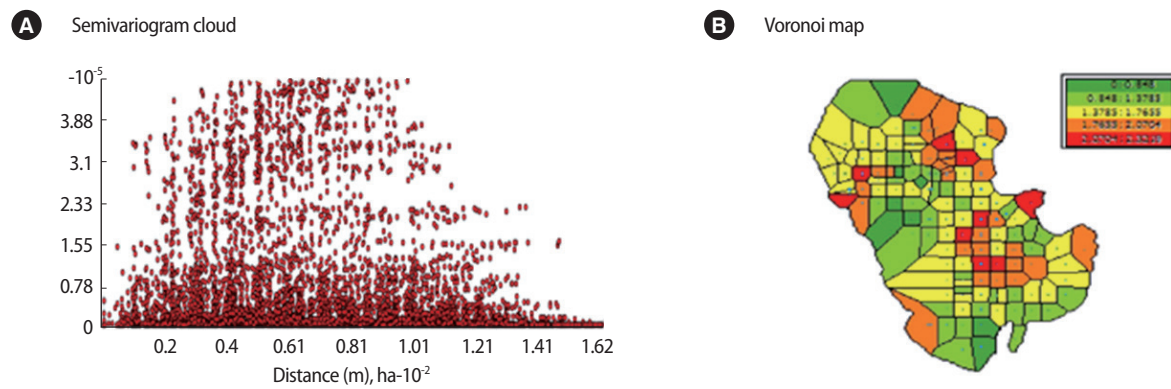


Figure S1. Location map of Agboglobloshie processing site.





**Figure S2.** Steps involved in statistical and geostatistical data analysis.



**Figure S3.** Semivariogram cloud (A) and voronoi map of degree of contamination (B).