

# Trends in medication use in patients with type 2 diabetes mellitus: a long-term view of real-world treatment between 2000 and 2015

Victoria Higgins  
James Piercy  
Adam Roughley  
Gary Milligan  
Andrea Leith  
James Siddall  
Mike Benford

Adelphi Real World, Macclesfield, UK

**Background:** Despite the availability of a variety of treatments, many patients with type 2 diabetes mellitus (T2DM) are not achieving glucose control. We analyzed successive waves of the Adelphi Real World Diabetes Disease Specific Programmes (DSPs) to assess treatment patterns reported by primary care physicians (PCPs) and specialists and the effect of treatment on levels of glucose control.

**Methods:** Data were collected between 2000 and 2015 in the US and EU5 (France, Germany, Italy, Spain, and the UK). Physicians completed patient record forms for the next 10 patients consulting with T2DM. Key aspects captured were change over time in therapy usage, time to insulin introduction, and glycated hemoglobin (HbA<sub>1c</sub>) levels.

**Results:** Over 12 DSP waves, 3,555 specialists and 5,109 PCPs completed questionnaires for 70,657 patients. Treatment patterns changed considerably over time as new agents were introduced. The number of agents prescribed per patient increased over time, as did HbA<sub>1c</sub> levels at which physicians stated they would introduce insulin. The greatest improvements in HbA<sub>1c</sub> levels occurred during 2000–2008, with little improvement since 2008.

**Conclusion:** In this real-world setting, the proportion of patients with T2DM achieving good glucose control has not increased greatly since 2008. A better understanding of how to individualize treatment pathways may be required to improve control in these patients.

**Keywords:** insulinization, real world, type 2 diabetes, treatment trends

## Introduction

The array of treatment options available to patients with type 2 diabetes mellitus (T2DM) has increased markedly in recent years, as reflected in recent treatment guidelines.<sup>1</sup> Current recommendations involve commencing metformin monotherapy if dietary and lifestyle modifications are not sufficient, with the addition of other agents if the patient's glycated hemoglobin (HbA<sub>1c</sub>) target is not met after 3 months. Available agents include sulfonylureas (SUs), thiazolidinediones (TZDs), dipeptidyl peptidase-4 (DPP-4) inhibitors, sodium–glucose cotransporter 2 (SGLT-2) inhibitors, glucagon-like peptide 1 receptor agonists (GLP-1 RAs), and insulin. Triple therapy may be needed if the HbA<sub>1c</sub> target is not reached on dual therapy, with the addition of insulins if required.<sup>1</sup> Glucose control or homeostasis is the focus of treatment for patients with T2DM. Current guidelines from the American Diabetes Association (ADA) and the European Association for the Study of Diabetes (EASD) recommend a personalized approach to glycemic control rather than a universal goal for all patients; an HbA<sub>1c</sub> level of 7% is often used as a cutoff point.<sup>1,2</sup> Despite comprehensive treatment guidelines and the

Correspondence: Victoria Higgins  
Adelphi Real World, Adelphi Mill,  
Grimshaw Lane, Bollington, Macclesfield,  
Cheshire SK10 5JB, UK  
Tel +44 1625 57 7361  
Fax +44 1625 57 5853  
Email [victoria.higgins@adelphigroup.com](mailto:victoria.higgins@adelphigroup.com)

availability of a range of therapeutic options, many patients continue to have poorly controlled diabetes. In the US, 48% of people with diabetes in the National Health and Nutrition Examination Surveys (NHANES) had an uncontrolled HbA<sub>1c</sub> >7% between 2007 and 2010,<sup>3</sup> with 13% of patients having an HbA<sub>1c</sub> >9%.<sup>4</sup> In an audit of over 2 million patients with diabetes in England and Wales, 35% of patients with T2DM had HbA<sub>1c</sub> >7.5%.<sup>5</sup> These data suggest that, despite the availability of a range of therapeutic options and guidelines, patients may be treated inadequately or are not taking control of their condition effectively, for example, via lack of lifestyle improvements or non-adherence to medication regimens.

Using data from successive waves of the Adelphi Real World Diabetes Disease Specific Programme (DSP), the aim of these analyses was to assess treatment patterns reported by primary care physicians (PCPs) and specialists involved in the management of patients with T2DM and the subsequent impact on levels of glycemic control. Key aspects of these analyses were to assess changing T2DM therapy usage since the launch of newer drug classes; review the role of polypharmacy; identify the trigger point at which physicians introduce insulin therapy in patients with T2DM; review any changes in time to insulin introduction; and analyze if any identified changes in treatment have ultimately affected HbA<sub>1c</sub> levels over an extended period in this patient population.

## Methods

Data were drawn from successive waves of the Diabetes DSP conducted between 2000 and 2015 in the US and EU5 (France, Germany, Italy, Spain, and the UK). These were prospective, cross-sectional surveys of physicians and their patients presenting in a real-world clinical setting. Although not longitudinal in nature, each wave provides an independent snapshot of cross-sectional data, which can be used to explore patterns over time. DSPs are large, multinational surveys conducted in clinical practice that describe current disease management, disease-burden impact, and associated treatment effects (clinical and physician-perceived). The survey methodology is designed to facilitate collection of up-to-date data from the following three key sources of information: physician face-to-face interviews, physician-reported workload questionnaires, and patient record forms. A complete description of the methods of the survey has been previously published.<sup>6</sup>

Using a check box, patients provided informed consent for use of their anonymized and aggregated data for research and publication in scientific journals. Data were collected in such a way that patients and physicians could not be identified

directly; all data were aggregated and de-identified before receipt, and as a result, data collection was undertaken in line with European Pharmaceutical Marketing Research Association guidelines and as such it does not require ethics committee approval. Each survey was performed in full accordance with relevant legislation at the time of data collection, including the US Health Insurance Portability and Accountability Act 1996,<sup>7</sup> the European Pharmaceutical Marketing Research Association guidelines,<sup>8</sup> and Health Information Technology for Economic and Clinical Health Act legislation.<sup>9</sup>

## Participating physicians and patients

For each DSP wave, physicians were eligible to participate in this research if they were personally responsible for treatment decisions and management of patients with T2DM. Inclusion criteria for patients were aged ≥18 years, a physician-confirmed diagnosis of T2DM, receiving antidiabetic non-insulin therapy (with or without insulin regimens), and consulting the physician on the day of assessment. Each wave of data collection was independent of the others, ensuring the same physicians and patients were not included year on year.

Eligible physicians completed a face-to-face interview. Of particular importance to our study objective was the question included from 2004 onward that specifically asked physicians what HbA<sub>1c</sub> level would prompt initiation of insulin therapy.

Physicians then completed a workload page for the next 5 working days. This provides a holistic view of T2DM management including prescribed and nonprescribed approaches. Irrespective of which patients were recruited for the survey, physicians recorded the total number of patients with T2DM consulting per day who were being managed with the following treatment approaches: 1) diet and exercise only; 2) non-insulin drug treatment only; 3) non-insulin drug treatment plus insulin; and 4) insulin only.

Physicians were then instructed to complete a patient record form for the next 10 consecutive consulting patients with a physician-confirmed diagnosis of T2DM and receiving prescribed antidiabetic therapy (with or without insulin), regardless of the reason for the consultation. The physician-reported forms reflected physicians' knowledge about their treatment decisions and assessment of health status in patients seeking routine care, including information on patients' demographics, clinical assessments, clinical outcomes, diabetes medication use, and history. The physician-reported forms also collected information on the time to insulin initiation. Market updates from year to year necessitated minor amendments to some questions (refer [Table S1](#) for specific questions administered in each wave).

It should be noted that as each survey was designed to facilitate understanding of real-world clinical practice, physicians could only report on data they had to hand at the time of the consultation. Therefore, this represents the evidence they had when making any clinical treatment and other management decisions at that consultation. No tests, treatments, or investigations were performed as part of this survey.

## Statistical analyses

Patient characteristics were analyzed descriptively for the total study sample. Categorical variables were described by proportion of respondents, excluding any missing values. Continuous numerical variables were described by their mean.

As the time from diagnosis of T2DM to the survey date was different in each patient within each wave, the time to initiation of insulin was compared against the year the patient was diagnosed, rather than the survey year in which the patient was included. For example, a patient recruited in 2015 diagnosed with T2DM 5 years earlier was considered the same as a patient recruited in 2011 diagnosed for 1 year, as their diabetes management would have started in the same year.

Survival analysis was used to analyze the time from diagnosis to the first insulin regimen. This method was chosen as patients who had not received any insulin regimen by the time of the survey could be included; therefore, a patient's

time from diagnosis to the point of data collection was used even if a patient had not yet received insulin, as they could potentially receive insulin at some point in the future.

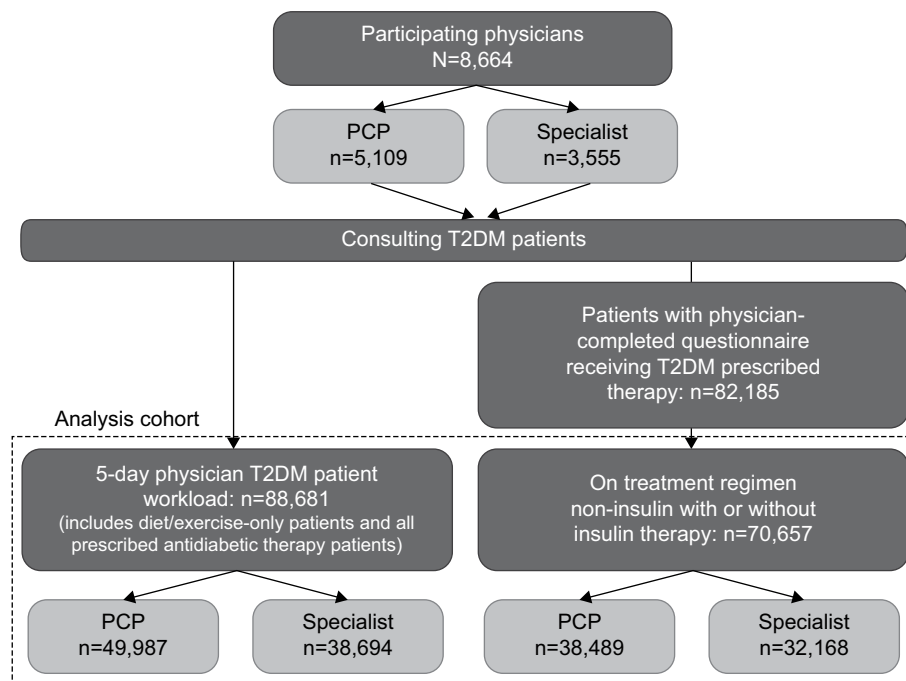
Kaplan–Meier failure curves were plotted by time of diagnosis, where “failure” in this analytical setting infers the initiation of insulin. A log-rank test was used to assess significant differences in the time taken for patients to receive insulin.

## Results

### Patients and physicians

A total of 3,555 specialists and 5,109 PCPs participated in the 12 DSP waves conducted between 2000 and 2015. A total of 88,681 patients with T2DM were counted via the 5-day workload page, providing the holistic prescribed and non-prescribed antidiabetic cohort; 70,657 patients with T2DM were recruited via the physician-reported questionnaires providing the prescribed antidiabetic therapy (non-insulin therapy with or without insulin) cohort (Figure 1).

Baseline characteristics of patients treated by PCPs and specialists were generally consistent over time (Table 1). No changes were apparent in mean age at diagnosis, current age, and body mass index. However, a slight increase was observed in the mean number of antidiabetic agents prescribed. This was more pronounced among specialists, who prescribed an average of 1.6 agents per patient in 2000, increasing to 2.1 per patient in 2015. This increase was



**Figure 1** Analyses cohort diagram.

**Note:** Specialist here refers to a diabetes specialist (diabetologist, endocrinologist).

**Abbreviations:** PCP, primary care physician; T2DM, type 2 diabetes mellitus.

**Table 1** Demographics and clinical characteristics by survey year of patients with T2DM treated by PCPs and specialists

Characteristic	Survey year				
	2000	2002	2004	2006	2008
Patients treated by PCPs					
Age (years), mean (SD), n	61.1 (13.0), 2,939	62.3 (12.3), 2,218	62.8 (12.4), 2,214	62.8 (11.8), 2,539	62.6 (11.9), 2,593
Male, %, n	54.0, 2,939	53.5, 2,216	54.7, 2,215	51.4, 2,485	52.6, 2,528
Age at diagnosis (years), mean (SD), n	53.4 (12.4), 2,439	55.5 (11.2), 1,950	56.3 (11.6), 1,959	57.5 (11.1), 2,337	56.9 (11.1), 2,445
Body mass index, (kg/m <sup>2</sup> ), mean (SD), n	29.5 (6.1), 2,856	29.5 (8.1), 2,189	29.5 (6.1), 2,181	29.4 (5.9), 2,508	29.1 (5.9), 2,554
Most recent HbA <sub>1c</sub> result (%), mean (SD), n	7.7 (1.6), 2,219	7.5 (1.6), 1,971	7.3 (1.5), 2,019	7.2 (1.2), 2,386	7.2 (1.2), 2,447
Antidiabetic drugs, mean (SD), n	1.4 (0.5), 2,942	1.6 (0.6), 2,219	1.5 (0.6), 2,215	1.6 (0.6), 2,539	1.6 (0.6), 2,593
Patients treated by specialists					
Age (years), mean (SD), n	60.0 (12.7), 1,942	60.1 (12.5), 2,096	60.5 (12.9), 2,133	60.6 (11.6), 2,321	61.1 (12.7), 2,459
Male, %, n	54.9, 1,941	53.6, 2,096	52.5, 2,131	53.3, 2,288	54.0, 2,401
Age at diagnosis (years), mean (SD), n	52.0 (12.3), 1,777	52.9 (11.3), 1,976	52.8 (11.9), 1,999	53.7 (12.1), 2,237	53.7 (12.1), 2,388
Body mass index (kg/m <sup>2</sup> ), mean (SD), n	29.8 (5.8), 1,853	30.1 (6.8), 2,055	29.9 (6.1), 2,058	29.6 (6.1), 2,279	29.7 (6.1), 2,408
Recent HbA <sub>1c</sub> result (%), mean (SD), n	7.8 (1.6), 1,650	7.7 (1.4), 1,949	7.6 (1.5), 1,998	7.5 (1.3), 2,231	7.5 (1.4), 2,374
Antidiabetic drugs, mean (SD), n	1.6 (0.6), 1,944	1.8 (0.6), 2,097	1.8 (0.6), 2,135	1.9 (0.7), 2,322	1.9 (0.7), 2,459

**Abbreviations:** T2DM, type 2 diabetes mellitus; PCPs, primary care physicians; SD, standard deviation; HbA<sub>1c</sub>, glycated hemoglobin.

greatest between 2000 and 2006, with the mean number of antidiabetic drugs remaining relatively static since 2006.

## Therapy patterns over time

In order to obtain an overview of treatment received by patients with diabetes, PCPs and specialists were asked to record what therapies their patients were receiving: diet and exercise only; non-insulin drug treatment only; non-insulin drugs plus insulin; and insulin only. As shown in [Figure S1](#), the majority of patients were prescribed non-insulin agents only. Insulin-only regimens and diet and exercise only played a minor role, being used in <20% and <10% of patients, respectively, with these proportions remaining relatively unchanged over time. Both PCPs and specialists have consistently reported prescribing a higher proportion of both non-insulin-only regimens and – especially among specialists – non-insulin plus insulin regimens, and this generally remained static between 2004 and 2015. Owing to these therapy dynamics, subsequent analyses excluded patients on insulin-only regimens and diet and exercise only.

The range of individual regimens used for the treatment of patients with T2DM has changed greatly since 2000, as demonstrated by the introduction of new agents from 2006 onward ([Figure 2](#)). Metformin monotherapy was most commonly prescribed by PCPs, increasing to a peak of 44% of patients in 2012 before dropping to 36% in 2015. The use of non-insulin-only combinations containing the new drug classes is derived from the addition of metformin plus DPP-4 inhibitor usage to all other non-insulin regimens containing single or combined use of DPP-4 inhibitors, SGLT-2 inhibitors, and GLP-1 RAs. Non-insulin-only combination use of these newer drug classes increased among PCPs from 4%

of patients in 2008 to 33% in 2015, in particular, metformin plus DPP-4 inhibitors predominantly in free form but also included fixed-dose combinations. This pattern was observed to a greater extent among specialists, where the use of the newer non-insulin-only classes, alone or in combination, increased from 1% of patients in 2006 to 43% in 2015. Specialist use of regimens containing non-insulin drugs plus insulin increased over the time period, being prescribed for 16% of patients in 2000 and 29% of patients in 2015, whereas PCP use of these regimens remained relatively static.

## Insulin initiation: perception versus reality

The proportion of physicians stating they would introduce insulin at HbA<sub>1c</sub> <8% decreased from 24% of PCPs and 34% of specialists in 2004 to 7% for both PCPs and specialists in 2015 ([Figure S2](#)). A corresponding increase in the proportion of physicians waiting until HbA<sub>1c</sub> was ≥9% was observed over this time period, from 36% of PCPs and 24% of specialists in 2004 to 42% of PCPs and 39% of specialists in 2015.

In line with physicians' perceptions of insulin being initiated at higher HbA<sub>1c</sub> levels, mean actual HbA<sub>1c</sub> level at the time of insulin initiation increased over the study period, as shown in [Figure S3](#), with the most pronounced increase being observed between 2011 and 2014 for PCPs (2011: 8.7%; 2014: 9%) and between 2011 and 2015 for specialists (2011: 8.8%; 2015: 9.7%).

## Time to insulin initiation

[Figure 3](#) shows time to insulin initiation, with patients receiving insulin significantly sooner after diagnosis in more recent years ( $P<0.001$ ; log-rank test). An overall trend toward a shorter time to insulin initiation was observed;

**Table I** (Continued)

Survey year						
2009	2010	2011	2012	2013	2014	2015
62.7 (12.0), 2,756	61.8 (12.1), 2,965	62.2 (12.2), 3,065	61.2 (12.0), 3,056	61.4 (11.9), 4,628	61.6 (11.9), 4,726	61.7 (12.0), 4,726
54.4, 2,684	55.8, 2,937	55.6, 3,064	54.3, 3,046	54.9, 4,659	53.6, 4,750	54.2, 4,726
57.3 (11.5), 2,586	56.3 (11.1), 2,623	56.5 (11.6), 2,737	56.3 (11.0), 2,734	56.1 (10.8), 4,069	56.3 (10.8), 4,178	56.2 (11.1), 3,911
29.4 (5.9), 2,685	29.8 (6.0), 2,929	29.5 (5.7), 3,016	29.3 (5.6), 2,998	29.5 (5.7), 4,578	30.0 (5.9), 4,522	29.8 (5.6), 4,655
7.2 (1.1), 2,575	7.1 (1.2), 2,776	7.2 (2.5), 2,925	7.1 (1.0), 2,901	7.1 (1.1), 4,573	7.2 (1.1), 4,665	7.2 (1.3), 4,644
1.6 (0.7), 2,756	1.6 (0.7), 2,966	1.6 (0.7), 3,067	1.6 (0.6), 3,057	1.6 (0.7), 4,659	1.6 (0.7), 4,750	1.7 (0.8), 4,726
60.5 (12.2), 2,523	60.0 (12.6), 3,090	59.9 (12.9), 3,143	59.8 (12.4), 3,155	59.6 (12.3), 3,050	59.1 (12.0), 3,080	59.0 (12.4), 3,151
52.8, 2,469	52.8, 3,043	54.8, 3,142	54.8, 3,143	53.9, 3,058	54.2, 3,086	54.3, 3,151
53.7 (11.5), 2,400	53.1 (11.8), 2,870	53.1 (11.9), 2,923	53.2 (11.6), 2,841	53.1 (11.4), 2,763	52.7 (10.9), 2,784	52.8 (11.5), 2,758
30.1 (5.8), 2,447	30.0 (6.0), 3,016	30.1 (5.9), 3,078	30.7 (6.1), 3,099	30.7 (6.2), 3,001	30.9 (6.3), 2,907	30.6 (6.0), 3,065
7.5 (1.3), 2,385	7.5 (1.4), 2,908	7.7 (3.7), 3,036	7.5 (1.2), 3,066	7.4 (1.4), 3,043	7.6 (1.4), 3,050	7.6 (1.5), 3,120
2.0 (0.7), 2,523	1.9 (0.8), 3,090	2.0 (0.8), 3,145	2.0 (0.8), 3,156	2.0 (0.9), 3,060	1.9 (0.9), 3,086	2.1 (0.9), 3,151

this was most pronounced among specialists. For example, a specialist-treated patient diagnosed before 1999 had an 8% likelihood of receiving insulin within the first 5 years after diagnosis compared with 17% for a patient diagnosed between 2004 and 2007 and 19% for a patient diagnosed between 2008 and 2011.

## Glucose control as measured by most recent HbA<sub>1c</sub>

The proportion of patients with HbA<sub>1c</sub> <7%, the goal recommended by many guidelines, is shown in Figure 4. In 2015, 50% of PCP-treated patients were likely to have controlled diabetes compared with 36% of specialist-treated patients. As expected, specialists treated a higher proportion of patients with HbA<sub>1c</sub> >9% compared with PCPs. Although improvements were seen in both groups of patients between 2000 and 2015, the majority of this progress was achieved between 2000 and 2008; glucose control has improved little since then.

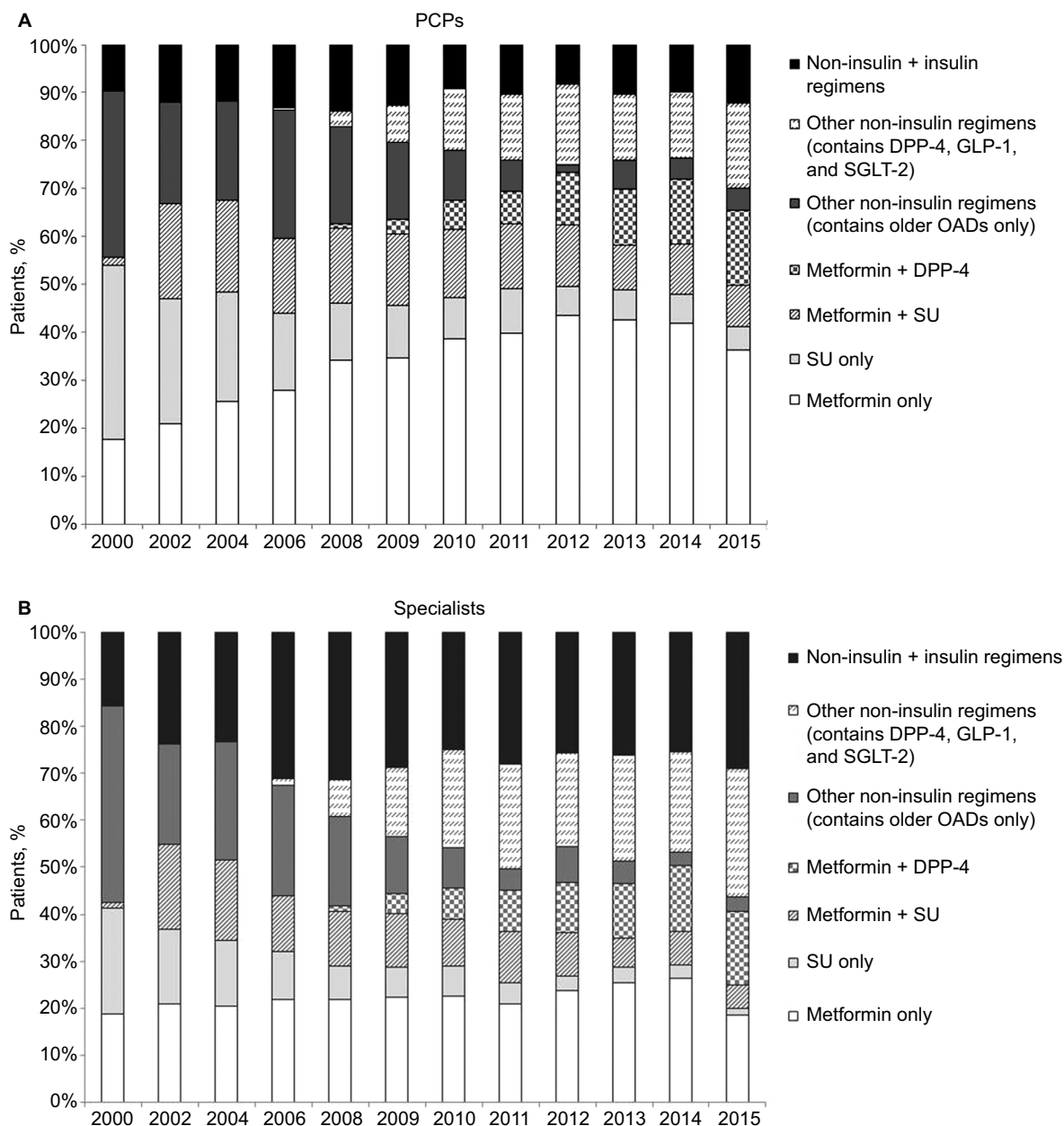
## Discussion

Real-world data spanning prolonged time intervals provide an opportunity to gain insights into treatment patterns and how they change over time. The diabetes suite of DSP analyses has assessed clinical trends and treatment patterns almost annually since 2000, providing a real-world view of the changing T2DM environment over this period.

The present analysis of treatment patterns in patients with T2DM over the period between 2000 and 2015 began with a holistic overview of four main treatment classes: diet and exercise only; non-insulin drug treatment only; insulin only; and insulin plus a non-insulin drug. The most apparent changes over time were an increase in the use of insulin plus an oral

non-insulin (oral antidiabetic agent with or without GLP-1 RA) and a reduction in the use of oral antidiabetic non-insulin agents alone. This is in line with treatment guidelines, which provide clear recommendations on when insulin should be added to oral non-insulin therapy,<sup>1,2</sup> and agrees with the notion that physicians do not appear to feel constrained by payer or formulary influences when prescribing antidiabetic therapies.<sup>10</sup> Examination of drug treatment patterns over this time period revealed that specialist use of non-insulin plus insulin regimens doubled between 2000 and 2006, whereas PCP use increased only slightly. Since 2006, there have been large increases in the use of the DPP-4 inhibitors, GLP-1 RAs, and SGLT-2 inhibitors by PCPs and specialists. This coincided with a decline in the use of regimens containing older agents such as SUs, TZDs, prandial glucose regulators, and alpha-glucosidase inhibitors. The use of TZDs may have been affected by the introduction in 2007 of a black box warning for rosiglitazone;<sup>11</sup> this may have resulted in an increase in the use of insulin in 2008. In their study of prescribing in the UK primary care population, Sharma et al<sup>12</sup> reported an increase in metformin from 55% of treated patients in 2000 to 84% in 2013, while prescription of SUs decreased from 65% to 41%, results that are in agreement with the findings of this analysis.

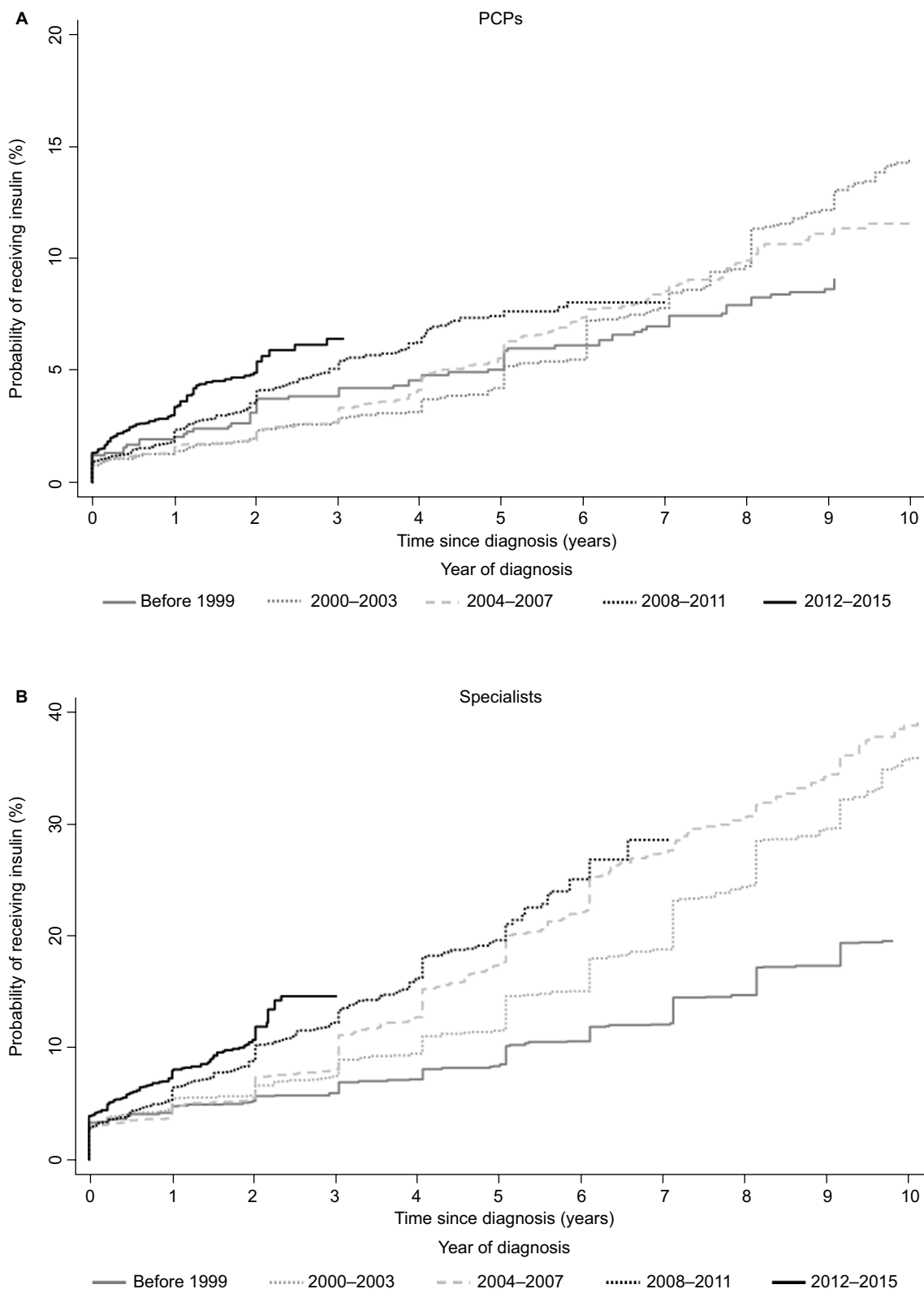
Our analysis also showed that the mean number of antidiabetic drugs per patient increased slightly between 2000 and 2008, a trend that was more noticeable in patients treated by specialists. Interestingly, the mean number of antidiabetic drugs has remained static since 2006 among PCPs and increased only slightly among specialists, suggesting that PCPs are more likely to switch therapy, while specialists add agents in an effort to achieve glycemic control. Among patients treated by specialists, fewer received



**Figure 2** Combination regimens used for the treatment of patients with T2DM between 2000 and 2015 for (A) PCPs and (B) specialists.  
**Notes:** All patients were receiving  $\geq 1$  non-insulin antidiabetic treatment and could also have been receiving insulin, but insulin-only patients were excluded. Older OADs category includes prandial glucose regulators, alpha-glucosidase inhibitors, TZDs, and combinations with metformin and SU. All other OADs are included in the “other non-insulin regimens” (including DPP-4 inhibitors, GLP-1 receptor agonists, and SGLT-2 inhibitors). Data collected in Diabetes Disease Specific Programme 2000–2015, physician-completed patient record form. Base: all patients receiving a non-insulin  $\pm$  insulin regimen from surveys conducted in 2000 (n=4,886), 2002 (n=4,316), 2004 (n=4,350), 2006 (n=4,861), 2008 (n=5,052), 2009 (n=5,279), 2010 (n=6,055), 2011 (n=6,212), 2012 (n=6,213), 2013 (n=7,719), 2014 (n=7,836), 2015 (n=7,877).  
**Abbreviations:** T2DM, type 2 diabetes mellitus; PCP, primary care physician; OADs, oral antidiabetic drugs; TZDs, thiazolidinediones; SU, sulfonylurea; DPP-4, dipeptidyl peptidase 4 inhibitor; GLP-1, glucagon-like peptide 1; SGLT-2, sodium–glucose cotransporter 2 inhibitor.

metformin monotherapy and more received insulin therapy compared with patients treated by PCPs; this is consistent with more advanced disease at the time of referral to the specialist. Although we observed increased use of newer agents, use of metformin monotherapy remained relatively static, suggesting no move toward introduction of multiple therapies earlier in the treatment path.

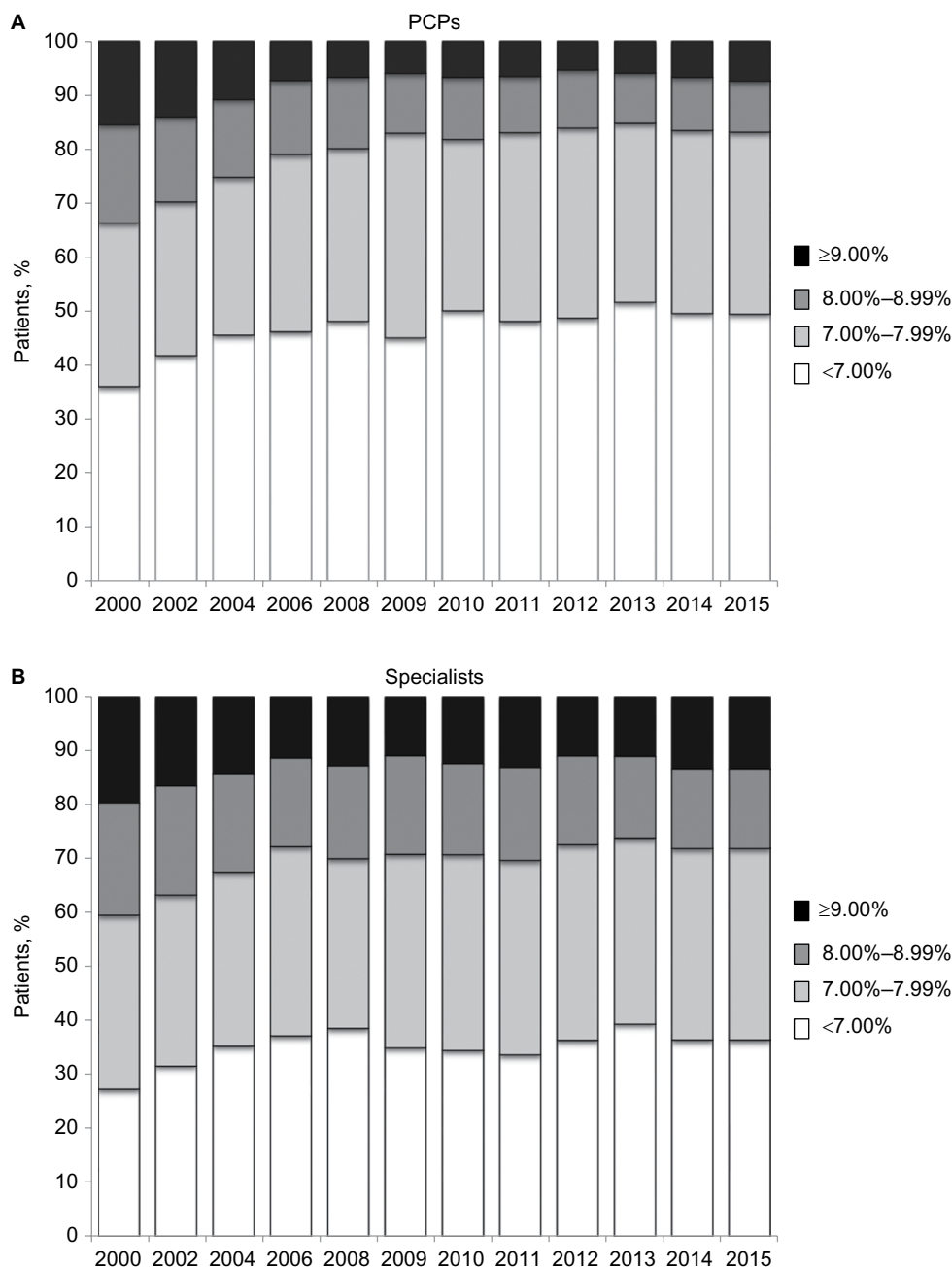
Between 2010 and 2015, an increase was observed in the HbA<sub>1c</sub> level at which physicians stated they would initiate insulin. In-line with these perception data, the HbA<sub>1c</sub> level at which insulin was actually initiated also increased. Current ADA/EASD guidelines recommend introducing insulin to the regimen for HbA<sub>1c</sub> levels  $\geq 10\%$ – $12\%$ ;<sup>1</sup> therefore, our findings are suggestive of adherence to guideline recommendations.



**Figure 3** Time to initiation of insulin in patients with T2DM for **(A)** PCPs and **(B)** specialists.

**Notes:** All patients were receiving  $\geq 1$  non-insulin antidiabetic treatment and could also have been receiving insulin, but insulin-only patients were excluded. As time to diagnosis of T2DM to the survey date was different in each patient within each wave, time to initiation of insulin was compared for the year the patient was diagnosed, rather than the survey year in which the patient was included. Data collected in Diabetes Disease Specific Programme 2011–2015, physician-completed patient record form. Base: year of diagnosis: pre-1999 (n=2,032), 2000–2003 (n=2,695), 2004–2007 (n=4,959), 2008–2011 (n=10,264), 2012–2015 (n=7,456).

**Abbreviations:** T2DM, type 2 diabetes mellitus; PCPs, primary care physicians.



**Figure 4** HbA<sub>1c</sub> levels in patients with T2DM treated by (A) PCPs and (B) specialists.

**Notes:** All patients were receiving  $\geq 1$  non-insulin antidiabetic treatment and could also have been receiving insulin, but excluded insulin-only patients. Data collected in Diabetes Disease Specific Programme 2000–2015, physician-completed patient record form. Base: all patients with stated most recent HbA<sub>1c</sub> from surveys conducted in 2000 (n=3,869), 2002 (n=3,920), 2004 (n=4,017), 2006 (n=4,617), 2008 (n=4,821), 2009 (n=4,960), 2010 (n=5,817), 2011 (n=5,961), 2012 (n=5,967), 2013 (n=7,616), 2014 (n=7,715), 2015 (n=7,764).

**Abbreviations:** HbA<sub>1c</sub>, glycated hemoglobin; T2DM, type 2 diabetes mellitus; PCPs, primary care physicians.

Despite insulin now being initiated at higher HbA<sub>1c</sub> levels than in earlier years, the actual time to insulin initiation decreased over the study period, suggesting that insulin-naïve patients are reaching these higher HbA<sub>1c</sub> levels sooner. Coupled with our data also showing that patient age at diagnosis has not changed over the survey time period, this would suggest that more patients are reaching the point of needing insulin treatment sooner in their disease progression.

A key finding of our research was that, despite the increased range of antidiabetic agents now available, HbA<sub>1c</sub> levels did not appear to be substantially better in 2015 than in 2000 in specialist-treated patients, although a small reduction was observed in patients treated by PCPs. This is likely to be a consequence of referral bias, with specialists seeing patients with more advanced, complex disease after failure of more straightforward therapy. In-line with our own findings, the



prevalence of patients achieving HbA<sub>1c</sub> <7% reported in the US NHANES study increased from 43% in the 1988–1994 report to 57% in NHANES 2003–2007 report as a result of the availability of newer agents, before falling to 53% in 2007–2010.<sup>3</sup> Further research is needed to establish why the development of new and effective antidiabetic agents has not led to better glucose control; however, as the mean change in HbA<sub>1c</sub> achieved is <1% for many of the glucose-lowering agents and >1% for only the SUs, GLPs, and insulins,<sup>13</sup> the challenge faced by clinicians is considerable.

Some limitations of this analysis should be considered. Different waves of the Diabetes DSP surveys are based on questionnaires and interviews that changed over time depending on market changes, needs, and prescribing environments. This evolution of the DSP facilitates the collection of more timely and relevant data, which can be used to monitor trends in a changing landscape. For example, introduction in recent surveys of a key question such as “At what HbA<sub>1c</sub> level would you initiate insulin?” enhances disease management understanding in today’s market where newer agents offer pre-insulin options that did not previously exist. Information regarding the time from diagnosis to insulin initiation was recorded differently in the various surveys. Questions administered in 2011 and 2012 captured this information via a direct question to the physician in each patient form. Data collected during 2013–2015 derived this information via treatment history information, although it must be borne in mind that it is possible that there may be missing information as physicians might not have had access to the complete patient record from diagnosis, particularly if patients changed their physician (or insurer). Patients included in the surveys may not reflect the general diabetes population, as patients in these analyses are consulting their physician and represent those who are likely to consult more frequently.

Despite these limitations, real-world studies play an important part in highlighting areas of concern that are not addressed in clinical trials. Patients included in clinical trials represent a small proportion of the consulting population as a result of age restrictions and failure to meet stringent eligibility criteria.<sup>14</sup> Patients treated in the real-world setting may be less likely to be adherent to medication than those included in clinical trials.<sup>15</sup> As a result, data from real-world studies can complement clinical trials and provide insight into the efficacy of interventions in patients commonly seen in clinical practice.

## Conclusion

Treatment choices after metformin monotherapy have increased markedly for patients with T2DM, as specialists

in particular take advantage of the range of antidiabetic agents and insulins now available. The proportion of patients achieving good glucose control (HbA<sub>1c</sub> <7%) increased most between 2000 and 2008. However, despite the availability of the newer agents and earlier introduction of insulin regimens, no improvement in the proportion of patients achieving HbA<sub>1c</sub> <7% has been observed since that time. It would seem that further clarification is required to establish which T2DM treatment pathways should be utilized in individual patient types to achieve improved and sustained glycemic control.

## Acknowledgment

The authors would like to thank Deirdre Carman for editorial assistance in the preparation of this manuscript. Adelphi Real World designed the data collection tools, run the fieldwork and own the data.

## Disclosure

The authors received no sponsorship or any outside funding or involvement in setting the research objectives, for this analysis and publication. The authors are employed by Adelphi Real World. The authors report no other conflicts of interest in this work.

## References

1. Inzucchi SE, Bergenstal RM, Buse JB, et al. Management of hyperglycaemia in type 2 diabetes, 2015: a patient-centred approach. Update to a position statement of the American Diabetes Association and the European Association for the Study of Diabetes. *Diabetologia*. 2015;58:429–442.
2. National Institute for Health and Care Excellence Guidance [webpage on the Internet]. Type 2 diabetes: the management of type 2 diabetes. Available from: <https://www.nice.org.uk/guidance/ng28>. Accessed August 18, 2016.
3. Stark Casagrande S, Fradkin JE, Saydah SH, Rust KF, Cowie CC. The prevalence of meeting A1C, blood pressure, and LDL goals among people with diabetes, 1988–2010. *Diabetes Care*. 2013;36:2271–2279.
4. Ali MK, McKeever Bullard K, Imperatore G, Barker L, Gregg EW; Centers for Disease Control and Prevention (CDC). Characteristics associated with poor glycemic control among adults with self-reported diagnosed diabetes – National Health and Nutrition Examination Survey, United States, 2007–2010. *MMWR Morb Mortal Wkly Rep*. 2012;61(suppl):32–37.
5. Health and Social Care Information Centre. *National Diabetes Audit 2012–2013. Report 1: Care Processes and Treatment Targets*; 2014. Available from: <http://www.hscic.gov.uk/catalogue/PUB14970/nati-diab-audi-12-13-care-proc-rep.pdf>. Accessed August 18, 2016.
6. Anderson P, Benford M, Harris N, Karavali M, Piercy J. Real-world physician and patient behaviour across countries: disease-specific programmes – a means to understand. *Curr Med Res Opin*. 2008;24:3063–3072.
7. US Department of Health and Human Services. *Summary of the HIPAA Privacy Rule*; 2003. Available from: <http://www.hhs.gov/sites/default/files/privacysummary.pdf>. Accessed August 18, 2016.

8. EphMRA Code of Conduct [webpage on the Internet]. Updated January 2016. Available from: <http://www.ephmra.org/code-of-conduct/2/A-Purpose-Scope-and-Sources>. Accessed August 18, 2016.
9. Health Information Technology. *Health Information Technology Act*. Available from: [https://www.healthit.gov/sites/default/files/hitech\\_act\\_excerpt\\_from\\_arra\\_with\\_index.pdf](https://www.healthit.gov/sites/default/files/hitech_act_excerpt_from_arra_with_index.pdf). Accessed August 18, 2016.
10. Silvey M, Higgins V, Leith A, Benford M, Graham A, Piercy J. International differences in the role of payer and administrative controls in prescribing decisions in type 2 diabetes mellitus (T2DM). *Value Health*. 2016;19:A209.
11. U.S. Food & Drug Administration [webpage on the Internet]. FDA Adds Boxed Warning for Heart-related Risks to Anti-Diabetes Drug Avandia Agency says drug to remain on market, while safety assessment continues; 2007. Available from: <http://www.fda.gov/NewsEvents/Newsroom/PressAnnouncements/2007/ucm109026.htm>. Accessed September 13, 2016.
12. Sharma M, Nazareth I, Petersen I. Trends in incidence, prevalence and prescribing in type 2 diabetes mellitus between 2000 and 2013 in primary care: a retrospective cohort study. *BMJ Open*. 2016;6(1):e010210. [Erratum in: *BMJ Open*. 2016;6:e010210corr1].
13. Liu SC, Tu YK, Chien MN, Chien KL. Effect of antidiabetic agents added to metformin on glycaemic control, hypoglycaemia and weight change in patients with type 2 diabetes: a network meta-analysis. *Diabetes Obes Metab*. 2012;14(9):810–820.
14. Saunders C, Byrne CD, Guthrie B, et al; Scottish Diabetes Research Network Epidemiology Group. External validity of randomized controlled trials of glycaemic control and vascular disease: how representative are participants? *Diabet Med*. 2013;30(3):300–308.
15. Hubbard TE, Paradis R. *Real-World Evidence: A New Era for Health Care Innovation*. The Network for Excellence in Health Innovation; 2015. Available from: [http://www.nehi.net/writable/publication\\_files/file/rwe\\_issue\\_brief\\_final.pdf](http://www.nehi.net/writable/publication_files/file/rwe_issue_brief_final.pdf). Accessed August 18, 2016.

## Diabetes, Metabolic Syndrome and Obesity: Targets and Therapy

Dovepress

### Publish your work in this journal

Diabetes, Metabolic Syndrome and Obesity: Targets and Therapy is an international, peer-reviewed open-access journal committed to the rapid publication of the latest laboratory and clinical findings in the fields of diabetes, metabolic syndrome and obesity research. Original research, review, case reports, hypothesis formation, expert

opinion and commentaries are all considered for publication. The manuscript management system is completely online and includes a very quick and fair peer-review system, which is all easy to use. Visit <http://www.dovepress.com/testimonials.php> to read real quotes from published authors.

Submit your manuscript here: <https://www.dovepress.com/diabetes-metabolic-syndrome-and-obesity-targets-and-therapy-journal>