



Antiplatelet and Antithrombotic Effects of the Extract of *Lindera obtusiloba* Leaves

Jun Ho Kim^{1,†,*}, Jaemin Lee^{2,†}, Soouk Kang¹, Hongsik Moon², Kyung Ho Chung¹ and Kyoung Rak Kim¹

¹Research and Development Center, Han Wha Pharma. Co., Ltd., Chuncheon 24468,

²Research Center, Yang Ji Chemical, Suwon 16229, Republic of Korea

Abstract

Lindera obtusiloba has been used in traditional herbal medicine for the treatment of blood stasis and inflammation. The leaves of *Lindera obtusiloba* have been reported to exhibit various physiological activities. However, there is little information available on their antiplatelet and antithrombotic activities. Thus, the present study aimed to evaluate the effect of *Lindera obtusiloba* leaf extract (LLE) on platelet activities, coagulation and thromboembolism. In a platelet aggregation study, LLE significantly inhibited various agonist-induced platelet aggregations *in vitro* and *ex vivo*. Furthermore, LLE significantly inhibited collagen-induced thromboxane A₂ (TXA₂) production in rat platelets. In addition, oral administration of LLE was protective in a mouse model of pulmonary thromboembolism induced by intravenous injection of a mixture of collagen and epinephrine. Interestingly, LLE did not significantly alter prothrombin time (PT) and activated partial thromboplastin time (aPTT). This study indicates that the antithrombotic effects of LLE might be due to its antiplatelet activities rather than anticoagulation. Taken together, these results suggest that LLE may be a candidate preventive and therapeutic agent in cardiovascular diseases associated with platelet hyperactivity.

Key Words: *Lindera obtusiloba*, Platelet aggregation, Thrombosis, Thromboxane

INTRODUCTION

Platelet adhesion, activation and aggregation on the exposed subendothelial extracellular matrix are essential for hemostasis and central events in the blood clotting process (Jennings, 2009). Platelets are activated by various endogenous factors (e.g., collagen, serotonin and TXA₂), and a platelet-rich thrombus is subsequently formed in the lumen of the injured vessel (Jennings, 2009). Platelet deposition by aggregation at these sites appears to be an important event leading to thrombotic disorders. Thus, antiplatelet therapy features prominently in the treatment or prevention of thrombotic diseases (Gross and Weitz, 2009; Rondina *et al.*, 2013).

Antithrombotic agents, such as aspirin, cilostazol and clopidogrel, have adverse effects, including internal bleeding, prolonged bleeding time, gastrointestinal bleeding, palpitation (CAPRIE Steering Committee, 1996; Johnson, 2008; Francescone and Halperin, 2008) and headache (Birk *et al.*, 2006). For these reasons, a number of studies have been conducted to identify antithrombotic agents from medicinal plants with fewer adverse effects. Many reports have indicated that plant-

based materials have the potential to be novel antithrombotic agents (Ballabeni *et al.*, 2007; Vilahur and Badimon, 2013). Additionally, several of these compounds exhibit excellent pharmacological activities and are free from adverse effects (Ballabeni *et al.*, 2007; Ryu *et al.*, 2009; Fuentes *et al.*, 2014). Moreover, natural flavonoids and polyphenols have been shown to effectively inhibit platelet aggregation (Bucki *et al.*, 2003). Therefore, development of antithrombotic agents from medicinal plants has attracted much interest.

Lindera obtusiloba, which is found in many provinces of Korea and China, is a known medicinal herb traditionally used for the treatment of blood stasis and inflammation (Yook, 1989). The leaves of *Lindera obtusiloba* in particular are traditionally consumed in both food and tea. We previously demonstrated that a twig extract from *Lindera obtusiloba* inhibited rat platelet aggregation *in vitro* and decreased mortality in a mouse model of thromboembolism (Lee *et al.*, 2010). Furthermore, a relevant patent application was published that describes preliminary data on the antithrombotic effects of *Lindera obtusiloba* twigs and leaves, which improve blood circulation (Oak *et al.*, 2014). Many researchers have reported strong antioxidant ef-

Open Access <https://doi.org/10.4062/biomolther.2016.021>

This is an Open Access article distributed under the terms of the Creative Commons Attribution Non-Commercial License (<http://creativecommons.org/licenses/by-nc/4.0/>) which permits unrestricted non-commercial use, distribution, and reproduction in any medium, provided the original work is properly cited.

Received Jan 29, 2016 Revised Apr 7, 2016 Accepted May 3, 2016

Published Online Nov 1, 2016

***Corresponding Author**

E-mail: jungom@hwpharm.com

Tel: +82-33-260-0500, Fax: +82-33-260-0507

[†]The first two authors contributed equally to this work.

fects and various physiological activities of *Lindera obtusiloba* leaf extracts (Hong *et al.*, 2013a; Hong *et al.*, 2013b; Hong, 2013). Despite the results of these studies, the antiplatelet and antithrombotic properties of the leaves of *Lindera obtusiloba* have not been studied.

In this study, we examined the effects of the leaves of *Lindera obtusiloba* on platelet function and coagulant activities using blood from rats and the antithrombotic effects using a mouse thromboembolism model.

MATERIALS AND METHODS

Reagents

Collagen, adenosine diphosphate (ADP), arachidonic acid (AA) and thrombin were purchased from Chrono-Log (Havertown, PA, USA). Aspirin and heparin were purchased from Sigma (St. Louis, MO, USA). Quercitrin was purchased from Santa Cruz Biotechnology (Dallas, TX, USA). Afzelin was purchased from BioBioPha (Kunming, China).

Plant materials and extract preparation

The dried leaves of *Lindera obtusiloba* were collected in the vicinity of Hongcheon and were purchased from Yakcho119 (Hongcheon, Republic of Korea). The dried leaves were extracted with 70% ethanol (v/v) at 70°C for 4 h, and the extracted solution was then filtered and evaporated. The extract was then freeze-dried to obtain powder and used as the *Lindera obtusiloba* leaf extract (LLE). The yield of LLE was 21.8%

Animals

Male Sprague-Dawley (SD) rats (7 weeks, 200-240 g) and ICR mice (7 weeks, 30-33 g) were purchased from Orient Bio (Sungnam, Republic of Korea). All animals were housed in colony cages, under standard laboratory conditions (12/12 h light/dark cycle), and had free access to food and water. All animal study protocols were conducted in accordance with the Guide for the Care and Use of Laboratory Animals published by the US National Institutes of Health (NIH Publication No. 85-23, revised 1996) and were approved by the Institutional Animal Care and Utilization Committee for Gyeonggi BioCenter (Suwon, Republic of Korea).

Preparation of blood samples

SD rats weighing 200-240 g were lightly anesthetized with diethyl ether. Blood samples were collected from the abdominal aorta into a syringe containing 3.8% sodium citrate. The ratio of blood to 3.8% sodium citrate was adjusted to 1:9 v/v. After centrifugation at 150×g for 10 min at room temperature, supernatants (platelet-rich plasma, PRP) were used for the aggregation study. The platelet count in PRP was finally adjusted to approximately 2×10⁸ cells/ml with Tyrode's solution (pH 7.4, 134 mM NaCl, 3 mM KCl, 2 mM MgCl₂, 0.3 mM NaH₂PO₄, 12 mM NaHCO₃, 12 mM glucose). Platelet-poor plasma (PPP) was obtained by centrifuging the samples at 2000×g for 20 min for the coagulation assay.

In vitro platelet aggregation study

Platelet aggregation was determined by the turbidimetric method using an aggregometer (Chrono-Log, Havertown, PA, USA). PRP was diluted with Tyrode's solution containing 0.3% BSA and adjusted to 400 μl to obtain a platelet count of 2×

10⁸ cells/ml. PRP was stimulated to aggregate using different aggregating agents at the following final concentrations: collagen, 2 μg/ml; ADP, 10 μM; AA, 100 μM; and thrombin, 0.2 U/ml. Platelet aggregation was recorded for 5 min after stimulation. Aggregations were measured and expressed as percent changes in light transmission with respect to PPP. In the *in vitro* study, PRP was preincubated with LLE (0.1, 0.3, 1 mg/ml) or aspirin at 37°C for 5 min before stimulation with the aggregating agents.

Ex vivo platelet aggregation study

SD rats were orally administered 70% polyethylene glycol (PEG)-saline, LLE (100, 200, 400 mg/kg), or aspirin (50 mg/kg) once a day for 5 days. Two hours after the last administration, rat blood samples were collected, and the platelet aggregation study was performed as described above.

Measurement of thromboxane A2 (TXA2) formation

PRP (2×10⁸ cells/ml) was preincubated with LLE (0.1, 0.3, 1 mg/ml) or aspirin at 37°C for 5 min, and 2 mg/ml collagen was added. After incubation at 37°C for 5 min with stirring, 10 mM ethylenediaminetetraacetic acid (EDTA) was added to stop TXA2 formation. The amount of TXA2 was determined by measuring thromboxane B2 (TXB2, the stable metabolite of TXA2). After centrifugation at 12,000 g for 3 min, the amount of TXB2 in the supernatant was measured using a commercial TXB2 enzyme immunoassay (EIA) kit (Cayman, Ann Arbor, MI, USA).

Pulmonary embolism model

The antithrombotic effect of LLE was investigated using a mouse pulmonary thromboembolism test as previously described (Lee *et al.*, 2010). In brief, LLE (100, 200, 400 mg/kg) and aspirin (50 mg/kg) as a positive control were orally administered once per day for 5 days to ICR mice weighing 30-33 g. One hour after the final oral administration, a mixture of collagen (20 μg/mouse) plus epinephrine (2 μg/mouse) was injected into the tail vein to induce pulmonary thromboembolism. A collagen solution containing native collagen fibrils from equine tendons was used (385, Chrono-Log). The number of dead mice was determined after 15 min, and the survival rate (%) was calculated using the following equation: [1-(dead or paralyzed mice)/total mice tested]×100.

Coagulation assay

Prothrombin time (PT) and activated partial thromboplastin time (aPTT) were automatically measured using an Automated Coagulation Laboratory 100 (Instrumentation Laboratory, Bedford, MA, USA) according to the manufacturer's instruction. PPP was prepared as described above. In brief, PPP was incubated with LLE for 3 min at 37°C, and the aPTT reagent was then added to the mixture and incubated for 3 min at 37°C. Then, 20 μM CaCl₂ was added, and the clotting time was recorded. For the PT assay, PPP was incubated with LLE for 3 min at 37°C. PT reagent was then added, and the clotting time was recorded. Saline was used as a control.

High-performance liquid chromatography (HPLC) analysis

The analytical HPLC profile was obtained using an Alliance® HPLC system (e2695, Waters, Milford, MA, USA). Chromatographic separation was performed on a Capcell Pak UG120 column (4.6×250 mm, 5 μm, Shiseido, Tokyo, Japan) at 30°C.

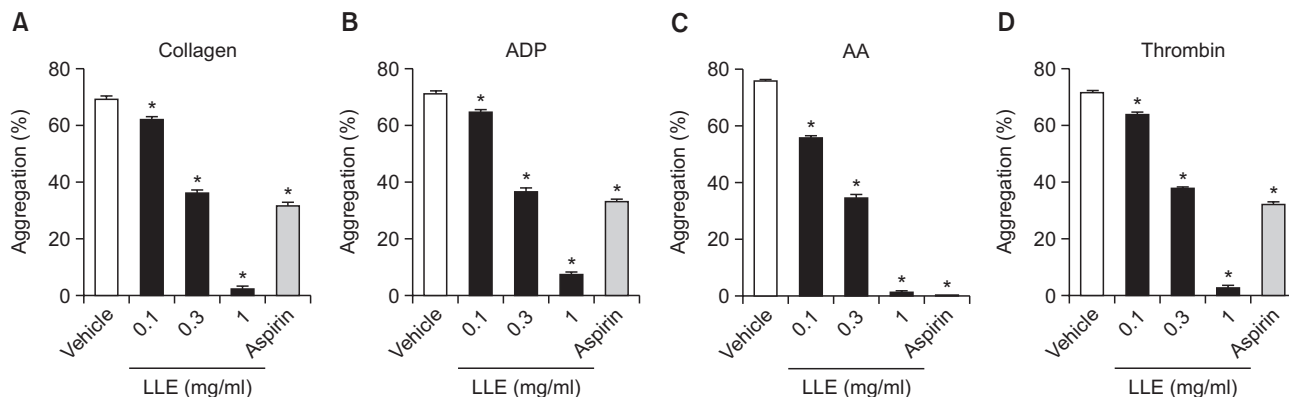


Fig. 1. Inhibitory effect of the extract of *Lindera obtusiloba* leaves (LLE) on platelet aggregation *in vitro*. After preincubation with LLE (0.1, 0.3, 1 mg/ml) or aspirin (1 mg/ml) for 5 min at 37°C, platelets were stimulated with 2 µg/ml collagen (A), 10 µM adenosine diphosphate (ADP) (B), 100 µM arachidonic acid (AA) (C), and 0.2 U/ml thrombin (D). Data are expressed as the mean ± SEM. n=5, *p<0.05 compared with the vehicle.

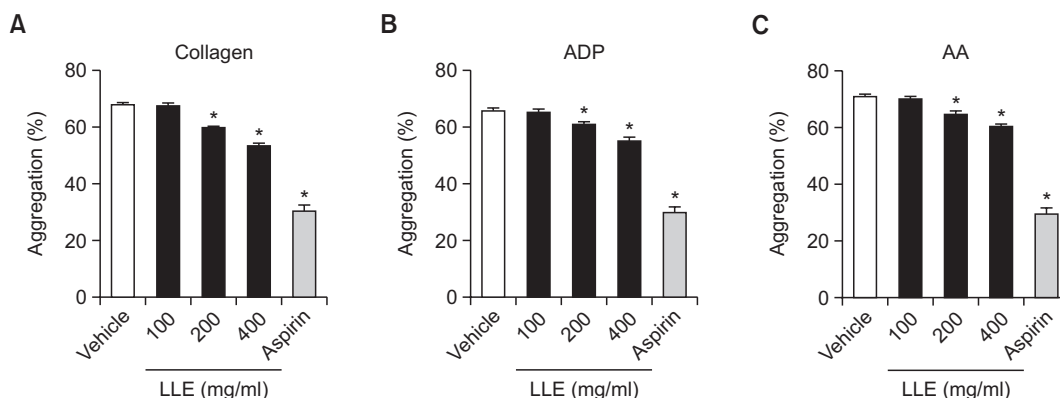


Fig. 2. Inhibitory effect of the extract of *Lindera obtusiloba* leaves (LLE) on platelet aggregation *ex vivo*. After rats were treated with LLE (100, 200, 400 mg/kg) or aspirin (50 mg/kg), blood samples were collected, and platelets were stimulated with 2 µg/ml collagen (A), 10 µM adenosine diphosphate (ADP) (B), 100 µM arachidonic acid (AA) (C). Data are expressed as the mean ± SEM. n=6, *p<0.05 compared with the vehicle.

The mobile phase was 20% acetonitrile in water containing 0.08% trifluoroacetic acid. The flow rate was 1.0 ml/min with an injection volume of 10 µl, and UV detection was performed at 254 nm.

Statistical analysis

In pulmonary thromboembolism experiment, the chi-square test was used to determine significant differences between the vehicle and treated groups. In the other experiments, data are expressed as the mean ± SE. The statistical comparisons were performed using one-way analysis of variance (ANOVA) followed by Dunnett's test or one-way ANOVA followed by Tukey's test. A significant difference was defined as $p < 0.05$.

RESULTS

Effect of LLE on platelet aggregation *in vitro*

We evaluated the antiplatelet effect of LLE using rat PRP. Aspirin (1 mg/ml) was used as a positive control. Our results showed that LLE had a maximum inhibitory effect on colla-

gen (2 µg/ml, Fig. 1A)-, ADP (10 µM, Fig. 1B)-, AA (100 µM, Fig. 1C)-, and thrombin (0.2 U/ml, Fig. 1D)-induced platelet aggregation (96.9 ± 0.8%, 89.4 ± 0.8%, 97.9 ± 0.5% and 96.1 ± 1.0% inhibition respectively) at a concentration of 1 mg/ml. The half maximal inhibitory concentration (IC_{50}) values were 0.48 ± 0.0, 0.48 ± 0.0, 0.44 ± 0.0 and 0.49 ± 0.0 mg/ml, respectively.

Effect of LLE on platelet aggregation *ex vivo*

The inhibitory effect of LLE on *ex vivo* platelet aggregation is shown in Fig. 2. Aspirin (50 mg/kg) was used as a positive control. Isolated platelets from LLE (200 and 400 mg/kg)-treated rats showed significant inhibition in collagen (2 µg/ml)-, ADP (10 µM)-, and AA (100 µM)-induced platelet aggregation, which concurred with the results obtained when PRP was directly incubated with LLE.

Effect of LLE on TXA₂ formation

TXA₂ is an important mediator of collagen-induced platelet activation and aggregation. Therefore, we evaluated the effect of LLE on TXA₂ formation. However, TXA₂ is unstable and

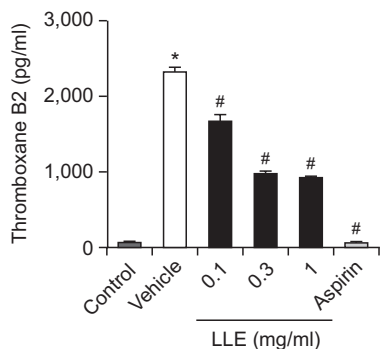


Fig. 3. Inhibitory effect of the extract of *Lindera obtusiloba* leaves (LLE) on thromboxane A2 (TXA2) formation. Platelets were preincubated with LLE (0.1, 0.3, 1 mg/ml) or aspirin (0.1 mg/ml) for 5 min and then stimulated with collagen (2 µg/ml) for 5 min. The TXA2 content in the supernatant was determined using a commercial EIA kit. Data are expressed as the mean ± SEM. n=3, *p<0.05 compared with the control. #p<0.05 compared with the vehicle.

is quickly converted to TXB2, the stable metabolite of TXA2. Thus, a TXB2 EIA kit was used to determine the TXA2 concentrations. As shown in Fig. 3, the TXB2 level in the control group was 77.1 ± 1.6 pg/ml, and this increased to 2327.8 ± 61.0 pg/ml after stimulation with collagen (2 µg/ml). As shown in Fig. 3, LLE (0.1, 0.3, 1 mg/ml) significantly inhibited collagen-induced TXB2 formation (1676.6 ± 82.5, 987.1 ± 26.2, 930.1 ± 9.8 pg/ml, respectively). Aspirin, the positive control, almost completely blocked TXB2 formation (63.5 ± 3.3 pg/ml) at a concentration of 0.1 mg/ml.

Effect of LLE on pulmonary thromboembolism in mice

To investigate the effect of LLE on occlusive thrombus formation, we tested the antithrombotic effect using a pulmonary thromboembolism model. An intravenous injection of collagen (20 µg/mouse) and epinephrine (2 µg/mouse) in mice induced massive pulmonary thrombotic occlusion, causing acute paralysis and death. As shown in Table 1, oral administration of LLE (400 mg/kg) to mice resulted in significant protection from the death due to thrombosis. Aspirin (50 mg/kg) was used as a positive control.

Effect of LLE on coagulation in vitro

To determine whether LLE has anticoagulant properties, PT and aPTT were evaluated using rat plasma. As shown in Table 2, LLE did not affect the rat plasma coagulation times. Heparin was used as a positive control and significantly prolonged PT and aPTT.

HPLC analysis

Several peaks were identified in the HPLC chromatogram of LLE (Fig. 4). Comparing the chromatographic peaks of LLE with reference chromatographic peaks, quercitrin and afzelin were identified.

DISCUSSION

In the *in vitro* platelet aggregation study, LLE significantly inhibited platelet aggregation induced by thrombin, collagen, ADP, and AA in a concentration-dependent manner. Addi-

Table 1. Effect of the extract of *Lindera obtusiloba* leaves (LLE) on pulmonary thrombosis in mice

	Dose (mg/kg)	Dead or paralyzed mice	Survival rate (%)
Vehicle		15	0
LLE	100	13	13.3
	200	12	20.0
	400	6	60.0*
Aspirin	50	7	53.3*

LLE (100, 200, 400 mg/kg) or aspirin (50 mg/kg) was orally administered to mice 2 h before the experiments. The chi-square test used to examine the difference between the vehicle and treated group. n=15. *p<0.05 compared with vehicle.

Table 2. Effect of the extract of *Lindera obtusiloba* leaves (LLE) on rat plasma coagulation time *in vitro*

	Concentration	PT (sec)	aPTT (sec)
Vehicle		8.55 ± 0.00	15.93 ± 0.93
	0.1 mg/ml	8.45 ± 0.17	15.20 ± 1.07
LLE	0.3 mg/ml	8.50 ± 0.09	15.13 ± 2.50
	1 mg/ml	8.95 ± 0.09	16.70 ± 0.46
Heparin	10 IU/ml	37.05 ± 10.82*	>106*

Data are expressed as means ± SEM. n=3. *p<0.05 compared with vehicle. PT: prothrombin time, aPTT: activated partial thromboplastin time.

tionally, collagen-induced TXA2 production was significantly inhibited by preincubation with LLE. However, the mechanism underlying the antiplatelet effect of LLE is unknown. It has been reported that several plant flavonoids inhibit platelet function by antagonistically binding to the TXA2 receptor (Guerrero *et al.*, 2005). However, based on the similar IC₅₀ values against various agonists, we hypothesize that LLE may regulate common signaling pathways, such as phospholipase (PLC)-associated signaling (Li *et al.*, 2010), rather than bind to specific receptors. Further studies are needed to elucidate the detailed mechanisms of LLE antiplatelet activity. The anti-aggregatory effect was also confirmed by an *ex vivo* study in rats. Oral administration of LLE resulted in dose-dependent inhibition of the platelet aggregation induced by collagen, ADP and AA. Disappointingly, however, the inhibitory effect of LLE was much less potent in the *ex vivo* assay compared to that of the *in vitro* assay. We speculate that oral LLE bioavailability and persistency in rat plasma may be factors in the difference between the *ex vivo* and *in vitro* results. Further investigations to determine the pharmacokinetic and pharmacodynamic properties will be helpful for understanding the effects of LLE. In the thromboembolism model, oral administration of LLE significantly increased the survival rate of mice with acute pulmonary thrombosis. These results indirectly demonstrate that the LLE antithrombotic effect was correlated with inhibition of platelet activity. Notably, LLE did not prolong PT and aPTT in the *in vitro* coagulation assay. These results suggest that LLE intake can prevent platelet hyperactivity with few side effects.

The leaves and twigs of *Lindera obtusiloba* were reported to contain polyphenols and flavonoids (Hong, 2013). Daily consumption of these compounds was shown to inhibit plate-

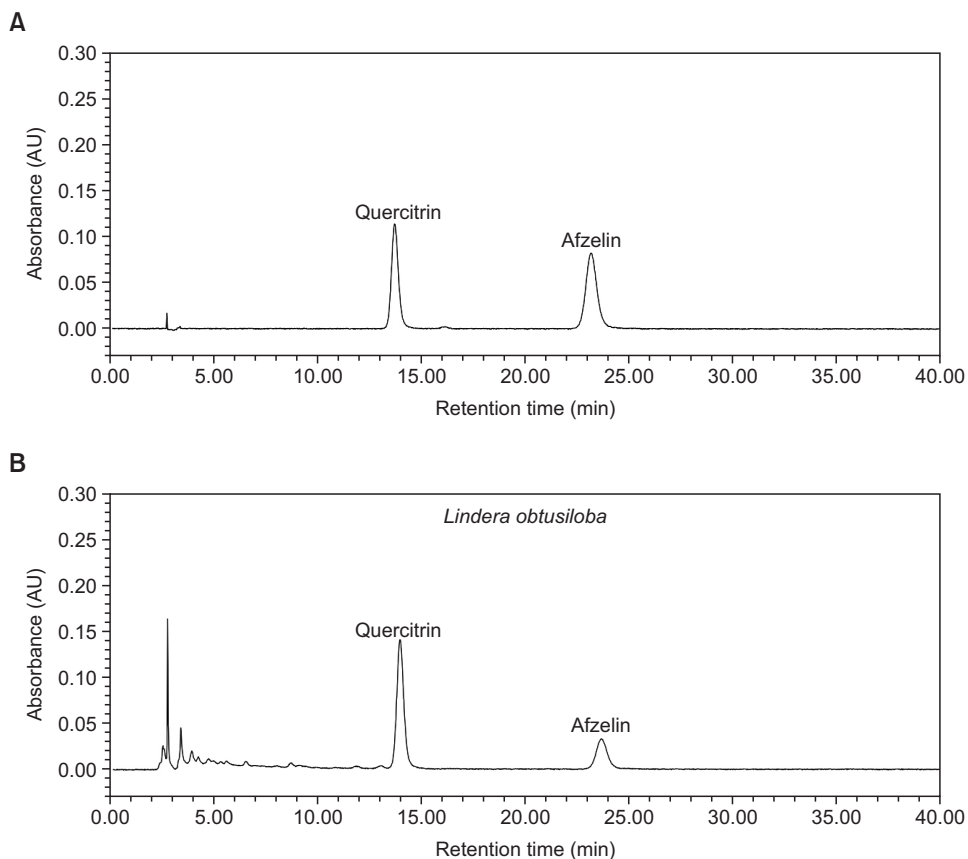


Fig. 4. HPLC chromatogram of the extract of *Lindera obtusiloba* leaves (B). Quercitrin and afzelin were identified based on the retention times of each reference compound (A).

let function (Murphy *et al.*, 2003). In this study, we observed that quercitrin and afzelin were the most abundant compounds in LLE. Quercitrin inhibited AA-induced platelet aggregation in rat platelets (Kim and Yun-Choi, 2008). In addition, quercetin, the aglycone of quercitrin, inhibited collagen-induced platelet aggregation by blocking hydrogen peroxidase production, calcium mobilization, and 1,3,4-inositol triphosphate formation in human platelets (Pignatelli *et al.*, 2000). Furthermore, kaempferol, the aglycon of afzelin, inhibited collagen-induced platelet aggregation and adhesion *in vitro* by suppressing the tyrosine phosphorylation of key components involved in the collagen receptor signaling cascade, such as spleen tyrosine kinase (Syk), Bruton's tyrosine kinase (Btk) and PLC γ 2 (Wang *et al.*, 2015). Although we confirmed that quercitrin and afzelin are the major constituents of LLE, the pharmacological effects of these compounds were not investigated. Therefore, further studies are necessary to determine the effect of these compounds on platelets and thrombosis. Additionally, the mechanism of action should be clarified.

In summary, our present results demonstrated that LLE has antiplatelet and antithrombotic effects *in vitro* and *in vivo*. These findings suggest that LLE may have therapeutic potential for the prevention or treatment of platelet-associated cardiovascular diseases.

ACKNOWLEDGMENTS

This research was financially supported by the Ministry of Trade, Industry and Energy (MOTIE) and the Korea Institute for Advancement of Technology (KIAT) through Promoting Regional Specialized Industry (R0002418).

REFERENCES

- Ballabeni, V., Tognolini, M., Bertoni, S., Bruni, R., Guerrini, A., Rueda, G. M. and Barocelli, E. (2007) Antiplatelet and antithrombotic activities of essential oil from wild *Ocotea quixos* (Lam.) Kosterm. (Lauraceae) calices from Amazonian Ecuador. *Pharmacol. Res.* **55**, 23-30.
- Birk, S., Kruuse, C., Petersen, K. A., Tfelt-Hansen, P. and Olesen, J. (2006) The headache-inducing effect of cilostazol in human volunteers. *Cephalalgia* **26**, 1304-1309.
- Bucki, R., Pastore, J. J., Giraud, F., Sulpice, J.-C. and Janmey, P. A. (2003) Flavonoid inhibition of platelet procoagulant activity and phosphoinositide synthesis. *J. Thromb. Haemost.* **1**, 1820-1828.
- CAPRIE Steering Committee (1996) A randomised, blinded, trial of clopidogrel versus aspirin in patients at risk of ischaemic events (CAPRIE). CAPRIE Steering Committee. *Lancet* **348**, 1329-1339.
- Francescone, S. and Halperin, J. L. (2008) "Triple therapy" or triple threat? Balancing the risks of antithrombotic therapy for patients with atrial fibrillation and coronary stents. *J. Am. Coll. Cardiol.* **51**, 826-827.

- Fuentes, E., Alarcón, M., Fuentes, M., Carrasco, G. and Palomo, I. (2014) A novel role of *Eruca sativa* Mill. (rocket) extract: antiplatelet (NF- κ B inhibition) and antithrombotic activities. *Nutrients* **6**, 5839-5852.
- Gross, P. L. and Weitz, J. I. (2009) New antithrombotic drugs. *Clin. Pharmacol. Ther.* **86**, 139-146.
- Guerrero, J. A., Lozano, M. L., Castillo, J., Benavente-García, O., Vicente, V. and Rivera, J. (2005) Flavonoids inhibit platelet function through binding to the thromboxane A2 receptor. *J. Thromb. Haemost.* **3**, 369-376.
- Hong, C.-O., Lee, H. A., Rhee, C. H., Choung, S.-Y. and Lee, K.-W. (2013a) Separation of the antioxidant compound quercitrin from *Lindera obtusiloba* Blume and its antimelanogenic effect on B16F10 melanoma cells. *Biosci. Biotechnol. Biochem.* **77**, 58-64.
- Hong, C.-O., Rhee, C. H., Won, N.-H., Choi, H.-D. and Lee, K.-W. (2013b) Protective effect of 70% ethanolic extract of *Lindera obtusiloba* Blume on tert-butyl hydroperoxide-induced oxidative hepatotoxicity in rats. *Food Chem. Toxicol.* **53**, 214-220.
- Hong, J.-H. (2013) Physiological activities of leaf and twig extracts from *Lindera obtusiloba* Blume. *Korean J. Food Cookery Sci.* **29**, 573-580.
- Jennings, L. K. (2009) Mechanisms of platelet activation: need for new strategies to protect against platelet-mediated atherothrombosis. *Thromb. Haemost.* **102**, 248-257.
- Johnson, S. (2008) Known knowns and known unknowns: risks associated with combination antithrombotic therapy. *Thromb. Res.* **123 Suppl 1**, S7-S11.
- Kim, J. M. and Yun-Choi, H. S. (2008) Anti-platelet effects of flavonoids and flavonoid-glycosides from *Sophora japonica*. *Arch. Pharm. Res.* **31**, 886-890.
- Lee, J.-O., Kim, C.-Y., Lee, S.-W. and Oak, M.-H. (2010) Antiplatelet and Antithrombotic Activities of *Lindera obtusiloba* Extract *in vitro* and *in vivo*. *Biomol. Ther. (Seoul)* **18**, 205-210.
- Li, Z., Delaney, M. K., O'Brien, K. A. and Du, X. (2010) Signaling during platelet adhesion and activation. *Arterioscler. Thromb. Vasc. Biol.* **30**, 2341-2349.
- Murphy, K. J., Chronopoulos, A. K., Singh, I., Francis, M. A., Moriarty, H., Pike, M. J., Turner, A. H., Mann, N. J. and Sinclair, A. J. (2003) Dietary flavanols and procyanidin oligomers from cocoa (*Theobroma cacao*) inhibit platelet function. *Am. J. Clin. Nutr.* **77**, 1466-1473.
- Oak, M.-H., Lee, J.-O., Kang, S.-H., Sohn, J.-D., Kim, J.-H., Lim, J.W., Na, Y., Oh, Y., Lee, S.-W, inventors; Han Wha Pharma Co., Ltd., Yang Ji Chemical Co., Ltd., assignees. Method for preventing and treating thrombotic disorders using a pharmaceutical composition comprising an extract of *Lindera obtusiloba*. United States patent US20140255529 A1. 2014 May 20.
- Pignatelli, P., Pulcinelli, F. M., Celestini, A., Lenti, L., Ghiselli, A., Gazzaniga, P. P. and Violi, F. (2000) The flavonoids quercetin and catechin synergistically inhibit platelet function by antagonizing the intracellular production of hydrogen peroxide. *Am. J. Clin. Nutr.* **72**, 1150-1155.
- Rondina, M. T., Weyrich, A. S. and Zimmerman, G. A. (2013) Platelets as cellular effectors of inflammation in vascular diseases. *Circ. Res.* **112**, 1506-1519.
- Ryu, K. H., Han, H. Y., Lee, S. Y., Jeon, S. D., Im, G.-J., Lee, B. Y., Kim, K., Lim, K.-M. and Chung, J.-H. (2009) Ginkgo biloba extract enhances antiplatelet and antithrombotic effects of cilostazol without prolongation of bleeding time. *Thromb. Res.* **124**, 328-334.
- Vilahir, G. and Badimon, L. (2013) Antiplatelet properties of natural products. *Vascul. Pharmacol.* **59**, 67-75.
- Wang, S. B., Jang, J. Y., Chae, Y. H., Min, J. H., Baek, J. Y., Kim, M., Park, Y., Hwang, G. S., Ryu, J.-S. and Chang, T.-S. (2015) Kaempferol suppresses collagen-induced platelet activation by inhibiting NADPH oxidase and protecting SHP-2 from oxidative inactivation. *Free Radic. Biol. Med.* **83**, 41-53.
- Yook, C. (1989) Medicinal plants of Korea. p. 184. Academy Publishing, Seoul.