

ARTICLE

Received 14 Dec 2015 | Accepted 19 Sep 2016 | Published 16 Nov 2016

DOI: 10.1038/ncomms13275

OPEN

Myelinosome formation represents an early stage of oligodendrocyte damage in multiple sclerosis and its animal model

Elisa Romanelli¹, Doron Merkler^{2,3}, Aleksandra Mezydło¹, Marie-Theres Weil^{4,5}, Martin S. Weber^{5,6}, Ivana Nikić¹, Stephanie Potz¹, Edgar Meinl¹, Florian E.H. Matznick¹, Mario Kreutzfeldt², Alexander Ghanem⁷, Karl-Klaus Conzelmann⁷, Imke Metz⁶, Wolfgang Brück⁶, Matthew Routh⁸, Mikael Simons^{4,5,9,10,11}, Derron Bishop¹², Thomas Misgeld^{9,10,11,13,*} & Martin Kerschensteiner^{1,11,*}

Oligodendrocyte damage is a central event in the pathogenesis of the common neuroinflammatory condition, multiple sclerosis (MS). Where and how oligodendrocyte damage is initiated in MS is not completely understood. Here, we use a combination of light and electron microscopy techniques to provide a dynamic and highly resolved view of oligodendrocyte damage in neuroinflammatory lesions. We show that both in MS and in its animal model structural damage is initiated at the myelin sheaths and only later spreads to the oligodendrocyte cell body. Early myelin damage itself is characterized by the formation of local myelin out-foldings—‘myelinosomes’—, which are surrounded by phagocyte processes and promoted in their formation by anti-myelin antibodies and complement. The presence of myelinosomes in actively demyelinating MS lesions suggests that oligodendrocyte damage follows a similar pattern in the human disease, where targeting demyelination by therapeutic interventions remains a major open challenge.

¹Institute of Clinical Neuroimmunology, University Hospital and Biomedical Center, Ludwig-Maximilians University Munich, 81377 Munich, Germany.

²Department of Pathology and Immunology, University of Geneva, 1211 Geneva, Switzerland. ³Division of Clinical Pathology, Geneva University Hospital, 1211 Geneva, Switzerland. ⁴Max-Planck Institute of Experimental Medicine, 37075 Göttingen, Germany. ⁵Department of Neurology, Georg-August University Göttingen, 37075 Göttingen, Germany. ⁶Institute of Neuropathology, Georg-August University Göttingen, 37075 Göttingen, Germany. ⁷Max von Pettenkofer-Institute and Gene Center, Ludwig-Maximilians University Munich, 81377 Munich, Germany. ⁸Department of Physiology and Health Science, Ball State University, Muncie, Indiana 47306, USA. ⁹German Center for Neurodegenerative Diseases (DZNE), 81377 Munich, Germany. ¹⁰Institute of Neuronal Cell Biology, Technical University Munich, 80802 Munich, Germany. ¹¹Munich Cluster of Systems Neurology (SyNergy), 81377 Munich, Germany.

¹²Department of Cellular and Integrative Physiology and Stark Neurosciences Research Institute, Indiana University School of Medicine, Indianapolis, Indiana 46202, USA. ¹³Center of Integrated Protein Sciences (CIPS), 81377 Munich, Germany. * These authors contributed equally to this work. Correspondence and requests for materials should be addressed to T.M. (email: thomas.misgeld@tum.de) or to M.K. (email: martin.kerschensteiner@med.uni-muenchen.de).

Although demyelination is a defining hallmark of multiple sclerosis (MS) and underlies the chronic impairment of axonal conduction in this disease, the cellular mechanisms of immune-mediated oligodendrocyte damage remain enigmatic¹. For example, where neuroinflammatory damage is initiated along the extended geometry of an oligodendrocyte is unclear², that is, whether at the cellular scale such damage spreads ‘centrifugally’ (from the oligodendrocyte cell body to myelin³) or rather ‘centripetally’ (from myelin to the soma⁴). Similarly, the earliest signs of demyelination in MS lesions are still unresolved. In principle, two different patterns could be posited: myelin damage could start at the myelin surface, where myelin is exposed to humoral and cellular immune mediators, or alternatively, pathology could first affect the myelin-axon adhesion, and hence the most distal extent of the oligodendrocyte. Furthermore, such myelin changes could be initiated focally at isolated sites on a myelin sheath or act segmentally affecting a larger stretch of myelin simultaneously, such as an entire internode. Disambiguating such possibilities is important to formulate clear molecular hypotheses about the mechanisms underlying oligodendrocyte damage and hence to build a rational foundation for future therapeutic approaches to prevent demyelination.

In vivo imaging has been a powerful analytical approach to resolve cell biological disease mechanisms in the intact nervous system. In the context of neuroinflammation, it has been applied to resolve the initiation of neuronal damage^{5,6}, the subcellular correlate of axonal damage⁷, as well as at the immune cell dynamics that represent the proximate cause of these neuronal changes⁸. However, so far *in vivo* imaging has not been used to explore the cellular dynamics underlying neuroinflammatory oligodendrocyte damage.

Here, we take advantage of multi-spectral two-photon imaging of axons, oligodendrocytes and myelin in the intact spinal cord, viral labelling of single oligodendrocytes, correlated light and electron microscopy and immune modulation approaches, to show in mouse models of MS: (1) that the initial site of immune attack appears to be myelin rather than the oligodendrocyte soma and that damage then spreads centripetally, (2) that one of the early signs of demyelination is the focal formation of bulb-like structures, which we call myelinosomes, that appear on the surface of the myelin sheath and (3) that formation of such myelinosomes is promoted by anti-myelin antibodies and abrogated by complement depletion, compatible with a model of surface opsonization of myelin. Finally, this cellular mechanism of oligodendrocyte damage seems to be also operational in MS lesions, as we find the same sequence of oligodendrocyte damage, as well as evidence of myelinosome formation by high-resolution confocal imaging of actively demyelinating MS lesions.

Results

Demyelination precedes oligodendrocyte loss in an MS model.

To understand where along the oligodendrocyte’s extent damage is initiated during neuroinflammation, we first quantified distinct aspects of oligodendrocyte pathology in an animal model of MS, experimental autoimmune encephalomyelitis (EAE). For this purpose, we induced EAE in Biozzi ABH mice by active immunization with the myelin oligodendrocyte glycoprotein (MOG). In this model, which recreates key histopathological features of MS, the mice initially develop relapses, which later give way to a steady progression of the disease⁹. To reliably visualize oligodendrocyte cell bodies, we crossed Biozzi ABH with PLP-GFP/BL6 mice, in which the expression of GFP is driven by the PLP promoter, thus allowing the visualization of oligodendrocytes and their processes¹⁰. Experiments were performed with F1 hybrids,

in which the clinical course and histopathological appearance of the disease is similar to wild-type Biozzi ABH mice (Supplementary Fig. 1). We perfused mice at different time-points during the course of EAE (at weight loss, at the onset of clinical symptoms, two days after the onset and at a chronic time-point, 20 days after onset of the progressive disease phase) and used confocal microscopy to determine the number of oligodendrocytes, as well as myelin density (based on MBP staining) in relation to the local infiltration density (based on Neurotrace staining). Our analysis showed that the proportion of lost myelin exceeded the percentage of oligodendrocyte loss throughout the course of EAE. For example, already nearly half of the myelin was lost in lesions analyzed during the initial stages of the disease, while oligodendrocyte numbers were unchanged at this time. Likewise, at the peak of disease activity (2 days after onset of clinical symptoms) myelin loss appeared to be the predominant alteration in all areas of a neuroinflammatory lesion (Fig. 1a–c): In the lesion centre (defined by a high density of infiltrating cells) myelin was largely lost, while more than half of the oligodendrocyte cell bodies were still present. Likewise, in lesion areas with only a moderate or low number of infiltrating immune cells, we observed a substantial decrease of myelin density in the absence of measurable oligodendrocyte loss. To confirm at the single-cell level that the spread of oligodendrocyte damage indeed follows a centripetal pattern, we established a low-cellular density labelling approach based on the injection of a diluted mCherry-expressing rabies virus¹¹. When injected into the lumbar dorsal columns of PLP-GFP/Biozzi ABH spinal cords this technique allowed us to reconstruct single oligodendrocytes and their processes using confocal microscopy. Quantitative analysis revealed that oligodendrocytes in spinal EAE lesions preserved shorter and fewer processes than oligodendrocytes in healthy mice (Fig. 1d–g). In line with these observations in fixed tissue, *in vivo* two-photon imaging of single-labelled oligodendrocytes at different stages of the neuroinflammatory lesion revealed that progressively shorter and less oligodendrocyte processes were observed, confirming the centripetal progression of oligodendrocyte pathology (Supplementary Fig. 2). During time-lapse recordings of several hours, almost no changes were observed, suggesting that oligodendrocytes stably persisted for longer periods of time despite extensive damage to their processes. Moreover, this ‘amputated’ state appears not to be an immediate step towards cell loss, as during our *in vivo* imaging experiments, we did not see any cell die (total of 100 h of imaging of 20 oligodendrocytes in 18 mice).

Taken together, these results point to a sequence of damage that starts with myelin loss followed by degeneration of oligodendrocyte processes and only in some cases, cell death. One conclusion from these results is that to understand how neuroinflammatory oligodendrocyte damage is initiated, we have to focus on the myelin sheaths themselves.

***In vivo* imaging reveals formation of myelinosomes.** To directly visualize early signs of neuroinflammatory myelin damage, we induced EAE in *Thy1-YFP16*/Biozzi ABH mice, in which many spinal axons are marked by YFP¹², and labelled myelin by local application of MitoTracker Red (which acts as a lipophilic myelin dye at the concentration used¹³). We then imaged regions of active inflammation (identified based on the accumulation of immune cells labelled with the vital dye Popo-1-Iodide¹³) in the superficial dorsal spinal cord by *in vivo* two-photon microscopy (Fig. 2a). In the resulting time-lapse movies, we could in some cases ($n = 13$) observe the *de novo* formation of bulb-like myelin structures, which we refer to as ‘myelinosomes’ (adopting a nomenclature used for fragments shed by other cells¹⁴). These

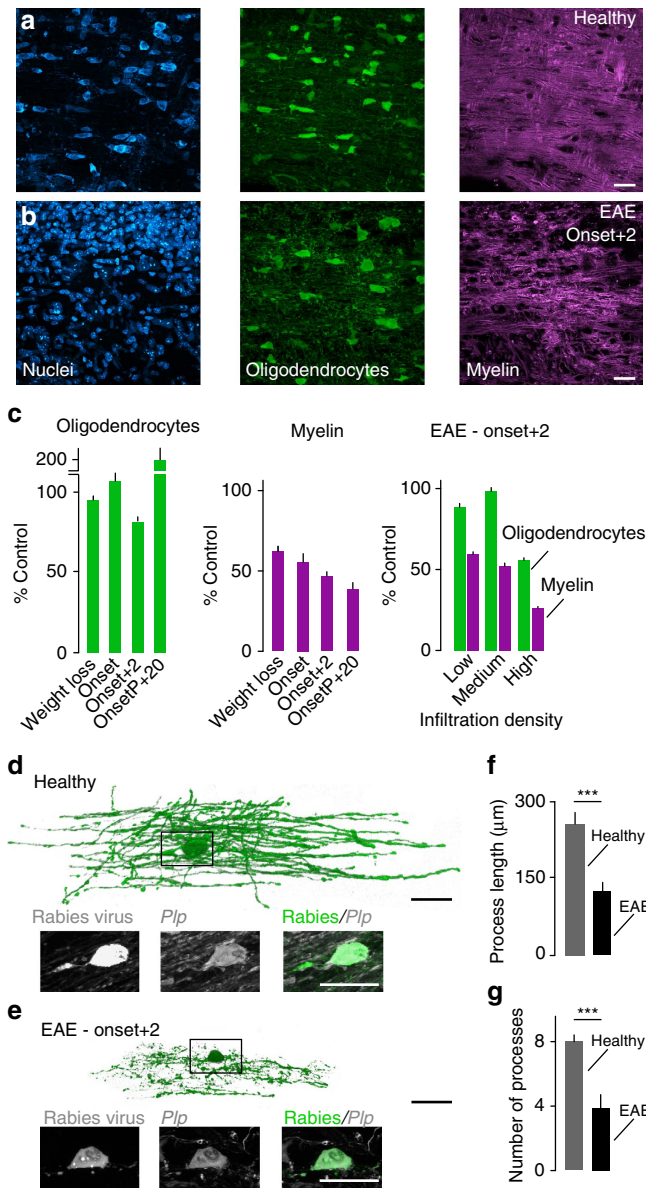


Figure 1 | Centripetal spread of oligodendrocyte damage in EAE lesions.

(a,b) Low magnification views of spinal cord sections of *PLP-GFP*/Biozzi ABH mice (oligodendrocytes labelled with GFP, green; nuclei with NT, cyan; myelin with MBP, magenta). In EAE (b) compared with healthy controls (a) invading immune cells and myelin disruption are apparent. (c) Quantification of oligodendrocyte number (green bars) and myelin length (magenta bars) at different time-points (Weight loss, $n = 3$ mice; Onset, $n = 3$ mice; Onset + 2, $n = 6$ mice; Onset of progression + 20 days, OnsetP + 20, $n = 3$ mice) and related to infiltration density in lesions analyzed at Onset + 2 days ($n = 6$ mice). All values are shown as percentage of control ($n = 3$ mice). (d-g) Three-dimensional renderings of confocal image stacks of single oligodendrocytes infected with rabies virus in *PLP-GFP*/Biozzi ABH mice, revealing oligodendrocyte process damage in EAE (e) compared with healthy controls (d) that affects both the length (f) and number of processes (g; $n = 8$ oligodendrocytes for each group). Insets below in d,e show the respective oligodendrocyte somata. (a,b) Scale bar, 25 μm ; (d,e) Scale bar, 100 μm (rendering) and 20 μm (inset). $***P < 0.001$ (f, $P = 0.0001$; g, $P = 0.0007$; t -test).

myelinosomes appeared at discrete spots along the internode and gradually lifted off the parent axons, in the process sometimes forming a myelin dye-labelled inclusion sandwiched between the

myelin out-folding and the axon (Fig. 2b; Supplementary Movie 1). Subsequent confocal microscopy analysis of fixed EAE tissue stained with an anti-MBP antibody confirmed the presence of myelinosomes in neuroinflammatory lesions independently of *in vivo* imaging and vital dye application. A particularly high density of myelinosomes was present during active inflammation 2 days after EAE onset, as well as at 2 days following the onset of EAE progression. Myelinosomes were still present, albeit at a lower density, during the chronic phase of the disease (Fig. 2c). Further analysis revealed that myelinosomes are not only present in the Biozzi EAE model, but are also observed in *Thy1-YFP16* mice on a C57BL/6 background (*Thy1-YFP16*/BL6) immunized with recombinant rodent or human MOG (EAE induced by rodent MOG in *Thy1-YFP16*/BL6 mice: 1 ± 0.1 myelinosomes/mm axon at Onset + 2 days; $n = 5$ mice, 252 axon segments with 9 mm of total axon length were evaluated; EAE induced by human MOG in *Thy1-YFP16*/BL6 mice: 1.5 ± 0.6 myelinosomes per mm axon at Onset + 2 days; $n = 3$ mice, 286 axon segments with 6.9 mm total axon length were evaluated). In contrast, such structures were observed neither in healthy control animals (Fig. 2c), nor in a centrifugal model of oligodendrocyte pathology induced by the injection of ethidium bromide into the lumbar spinal cord (0 ± 0 myelinosomes; $n = 3$ healthy mice, 217 axon segments, 5 mm total axon length; likewise 0 ± 0 myelinosomes were observed in 3 saline-injected mice, 183 axon segments, 4.1 mm total axon length; Supplementary Fig. 3).

To understand the ultrastructure of myelinosomes, we used the near infrared branding (NIRB) technique¹⁵ to reconstruct myelinosomes identified under the light microscope by serial sectioning transmission electron microscopy (Fig. 2d-f). The ultrastructural analysis confirmed that myelinosomes, as well as the myelin dye-positive inclusions, are composed of structures that showed the membrane layering characteristic of compacted myelin. To better visualize internal myelin ultrastructure, we analyzed high-pressure frozen samples of neuroinflammatory lesions induced in Biozzi ABH mice. This analysis revealed two morphological features that subcategorize myelinosomes: (i) myelin outfolding could either result from the detachment of the entire myelin sheath from the axon surface or a splitting of the myelin sheets, resulting in myelinosomes comprised of only some superficial myelin leaflets (typically including about 50% of the myelin thickness); (ii) some myelinosomes contained myelin inclusions inserted either between the axon and the detached myelin or between flared myelin sheaths (Fig. 2g-i; Supplementary Fig. 4). Such ultrastructural myelin changes appear to be specific for immune-mediated oligodendrocyte damage, as they are essentially absent in a model of toxic demyelination induced by the copper chelator cuprizone (one structure resembling a myelinosome was observed in 181 myelin profiles in the corpus callosum from 6 mice, half of which were examined at 2 or 3 weeks of cuprizone treatment, respectively, versus no myelinosomes in 172 myelin profiles in the corpus callosum of 3 control mice; cf. 16 myelinosomes that were observed in 115 myelin profiles in the spinal cord from 3 EAE mice versus none in 125 myelin profiles in the spinal cord of 3 control mice).

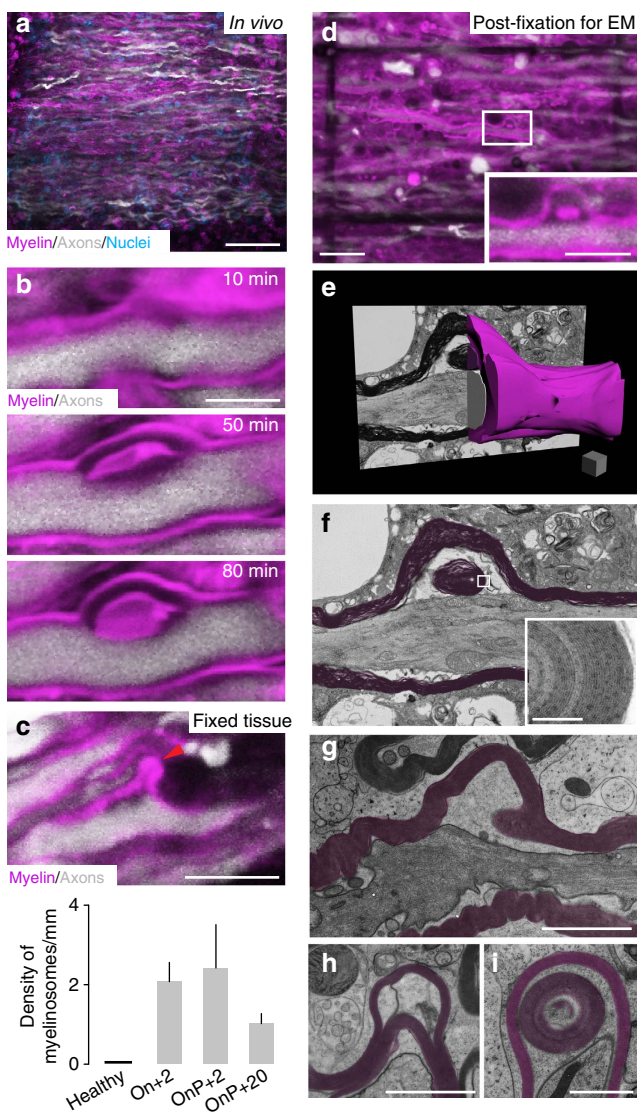
Antibody-complement complexes promote myelinosome formation.

To identify potential immune mediators that can induce myelinosome formation, we first investigated the cellular environment of myelinosomes in electron microscopy reconstructions. We found that in our samples, myelinosomes were often in the immediate vicinity of phagocytes, which in some cases engulfed the myelinosomes (Fig. 3a; Supplementary Movie 2). To better characterize the phagocyte population surrounding sites of

myelinosome formation, we induced EAE in *CCR2^{RFP/+}/Biozzi ABH* mice. In this knock-in mouse strain monocyte-derived macrophages, the primary phagocyte population associated with demyelination in EAE¹⁶, are labelled with RFP. We perfused mice at the peak of disease activity (2 days after onset) and counterstained the tissue for MBP to detect myelinosomes. To probe whether macrophages are more likely to interact with myelinosomes than morphologically unaffected myelin, we compared the probability of a macrophage to be in close apposition (<1µm distance) to a myelinosome to the probability of a phagocyte contact on the opposite side of the axon (where due to the low density of myelinosomes, such a structure is typically absent). Our confocal analysis showed that 83.7% of the myelinosomes examined ($n = 43$ myelinosomes from four mice) were in close apposition with blood-derived macrophages (RFP⁺ cells), while only 34.9% of the (unaltered) myelin on the other side showed such appositions. To further assess the potential contribution of tissue-resident microglia cells to myelinosome formation, we counterstained additional tissue sections with the phagocyte marker Iba1. Here, none of the myelinosomes examined ($n = 15$ myelinosomes from three mice) were in contact with microglial cells (Iba1⁺/RFP⁻ cells), while in 20% of the cases microglia cells were found in close apposition

with the corresponding unaffected side of the axon. Taken together, these analyses suggest a preferential association of myelinosomes and blood-derived macrophages.

One candidate mechanism that could initiate such a macrophage-mediated immune attack against myelin is the humoral immune response. To directly test whether anti-myelin antibodies can induce myelinosome formation, we induced EAE in *Thy1-YFP16/BL6* mice by immunization with MOG_{35–55} peptide. In this variant of EAE, B cells and antibodies play only a minor role and primary demyelination is limited¹⁷. Demyelination can however be substantially enhanced by the transfer of the MOG-reactive monoclonal antibody, 8.18C5 (ref. 18). Indeed, in this EAE model, we found a comparably low density of myelinosomes, while anti-MOG antibody transfer not only increased the area of demyelination, but also the local density of myelinosomes within the demyelinated area (Fig. 3b,c). At the same sites, T cells and macrophage densities were not significantly altered (Supplementary Fig. 5). These experiments indicate that anti-myelin antibodies can induce the formation of myelinosomes in a neuroinflammatory environment, and raise the question how such antibodies prime phagocyte activation. One possible intermediate of such phagocyte priming could be the activation of complement components by myelin-bound antibodies¹⁹. To probe the involvement of this mechanism in myelinosome formation, we treated *Thy1-YFP16/BL6* mice with Cobra Venom Factor (CVF) to deplete complement²⁰ and in parallel induced myelinosome formation by transfer of the 8.18C5 antibody. Complement depletion prevented antibody-induced myelinosome formation in areas of demyelination (Fig. 3b,c), again leaving infiltration densities unaffected (Supplementary Fig. 5). In line with previous work¹⁸, complement depletion also reduced the overall size of the demyelinated area. Together these results indicate that antibody–complement complexes play an important role in the initiation of myelinosome formation and subsequent myelin loss in neuroinflammatory lesions.



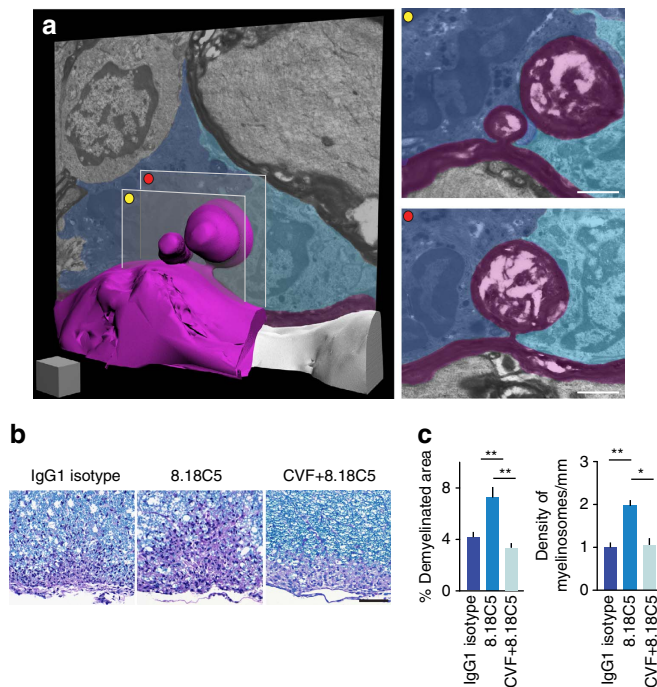


Figure 3 | Myelinosome formation is mediated by antibody opsonization and macrophage engulfment. (a) Three-dimensional electron microscopy reconstructions reveal that myelinosomes (here examples composed of a few myelin leaflets; pseudocoloured in magenta) are surrounded by cells that show the ultrastructural hallmarks of phagocytes (pseudocoloured in cyan and blue). Single electron microscopy planes of the myelinosomes are shown on the right. (b,c) Anti-myelin antibodies and complement initiate demyelination and myelinosome formation as revealed by LFB/PAS stainings (b, myelin, blue) to assess the area of demyelination and confocal microscopy analysis of MBP-immunostained sections to quantify myelinosome density, both performed in EAE animals (*Thy1-YFP16/BL6*) treated with anti-MOG antibody (8.18C5) without or with complement depletion (cobra venom factor, CVF; for the area of demyelination were analyzed: $n = 11$ mice injected with IgG1 isotype control antibody, $n = 11$ mice treated with 8.18C5 and $n = 4$ mice receiving CVF + 8.18C5; for the quantification of density of myelinosomes were analyzed: $n = 14$ mice injected with IgG1 isotype control antibody, $n = 15$ mice treated with 8.18C5 and $n = 8$ mice receiving CVF + 8.18C5). (a) Scale bar, 1 μm (cube), and 1 μm (insets); (b) Scale bar, 50 μm . * $P < 0.05$; ** $P < 0.01$ (for analysis of demyelinated area: Kruskal-Wallis followed by Dunn's multiple comparison test; for analysis of myelinosomes formation: one-way ANOVA followed by Bonferroni's multiple comparison tests).

Myelinosomes are present in actively demyelinating MS lesions.

To investigate whether myelinosome formation is also an early step of oligodendrocyte damage in the human disease, we analyzed actively demyelinating lesions in brain biopsies from MS patients (Supplementary Table 1). To determine, whether in MS oligodendrocyte damage followed a 'centripetal' pattern, we used the same approach as in EAE (cf. Fig. 1) and performed triple immuno-labelling to reveal oligodendrocytes (stained for NogoA), myelin (MBP) and microglia/macrophages (Iba1) on sections counterstained with the nuclear dye DAPI (Fig. 4a; Supplementary Fig. 6). Quantitative analysis of early active lesions²¹ showed that myelin was almost completely lost in the centre and substantially reduced at the rim region of the lesion, while it was preserved in the normal-appearing white matter (NAWM). In contrast, the density of NogoA-positive oligodendrocytes was comparable between the lesion areas and the adjacent NAWM (Fig. 4b–e). These results are consistent with

a centripetal spread of damage in oligodendrocytes located in active MS lesions, that is damage that primarily affects myelin integrity, and only to a lesser extent oligodendrocyte survival.

To determine whether oligodendrocyte damage in actively demyelinating MS lesions is also accompanied by myelinosome formation, we imaged myelin sheaths with higher resolution in brain sections immunostained for MBP and neurofilament (NF200). We detected focal myelin out-foldings that met the morphological criteria for myelinosomes as dynamically observed and ultrastructurally corroborated in the EAE model (Fig. 4f). Myelinosome density was elevated in the lesion area compared with the adjacent NAWM. No myelinosomes were present in the white matter of control brain sections from patients without neuroimmunological disease or in brain lesions of patients suffering from progressive multifocal leukoencephalopathy (PML), a disease, in which a viral attack results in oligodendrocyte death²² (Fig. 4g; Supplementary Fig. 6). Thus, also in MS, myelin damage corresponds to the presence of focal changes akin to myelinosomes, suggesting the occurrence of a local immune attack mediated by the abundant mononuclear phagocytes found in areas of active demyelination in MS (Fig. 4b,e).

Discussion

Damage to oligodendrocytes and their myelin sheaths is the pathological hallmark of MS lesions. Here, we show that changes in oligodendrocyte morphology in neuroinflammatory lesions proceed from the outside-in—resulting in oligodendrocytes that have less and shorter processes. Remarkably, oligodendrocytes appear to be able to survive in this amputated state for extended periods of time, potentially preserving their ability to reform myelin sheaths. While the morphological consequence of a neuroinflammatory attack is thus the selective loss of the peripheral oligodendrocyte compartments, this does not exclude a predisposing global incapacitation of the affected oligodendrocytes, for example, due to an altered metabolic state or disrupted ion balance due to a toxic inflammatory milieu (a state of the oligodendrocyte that could be described as a 'dying-back oligodendrogliopathy'^{22,23,24}). Indeed the ability of therapeutic strategies that primarily target oligodendrocyte survival and function to also limit demyelination would argue for such a predisposing effect^{25,26}. In the MS models and brain biopsies we investigated here, the centripetal pattern of oligodendrocyte damage we observed appears to be initiated at discrete sites on the surface of myelin sheaths, where in parallel to the progress of demyelination, local out-foldings—myelinosomes—are found. Electron microscopy analysis using high-pressure frozen samples to optimally preserve myelin morphology^{27,28} and serial sectioning electron microscopy for 3D reconstruction^{14,15} revealed that myelinosomes can be classified into several ultrastructural subtypes. In some cases, the entire myelin sheaths was detached from the underlying axon, while in other cases only the upper half of the myelin leaflets was lifted off, resulting in split myelin sheaths. Both of these patterns were sometimes accompanied by myelin inclusions. At least some of these phenomena could be explained by the recent insight that myelin basic protein (MBP), the major protein component of the myelin sheath, transitions from a soluble phase to a cohesive network to allow myelin compaction²⁹. Such a protein phase transition could be locally reversed by pathological impact, allowing individual myelin leaflets to separate and collapse into myelin bulbs³⁰.

Bulb-like myelin structures have indeed been noted in a number of situations, where myelin sheaths are attacked or remodelled, for example, in peripheral neuropathies such as Charcot-Marie-Tooth type 4H³¹, in animal models of dysmyelination³², as well as, already previously, in MS and its

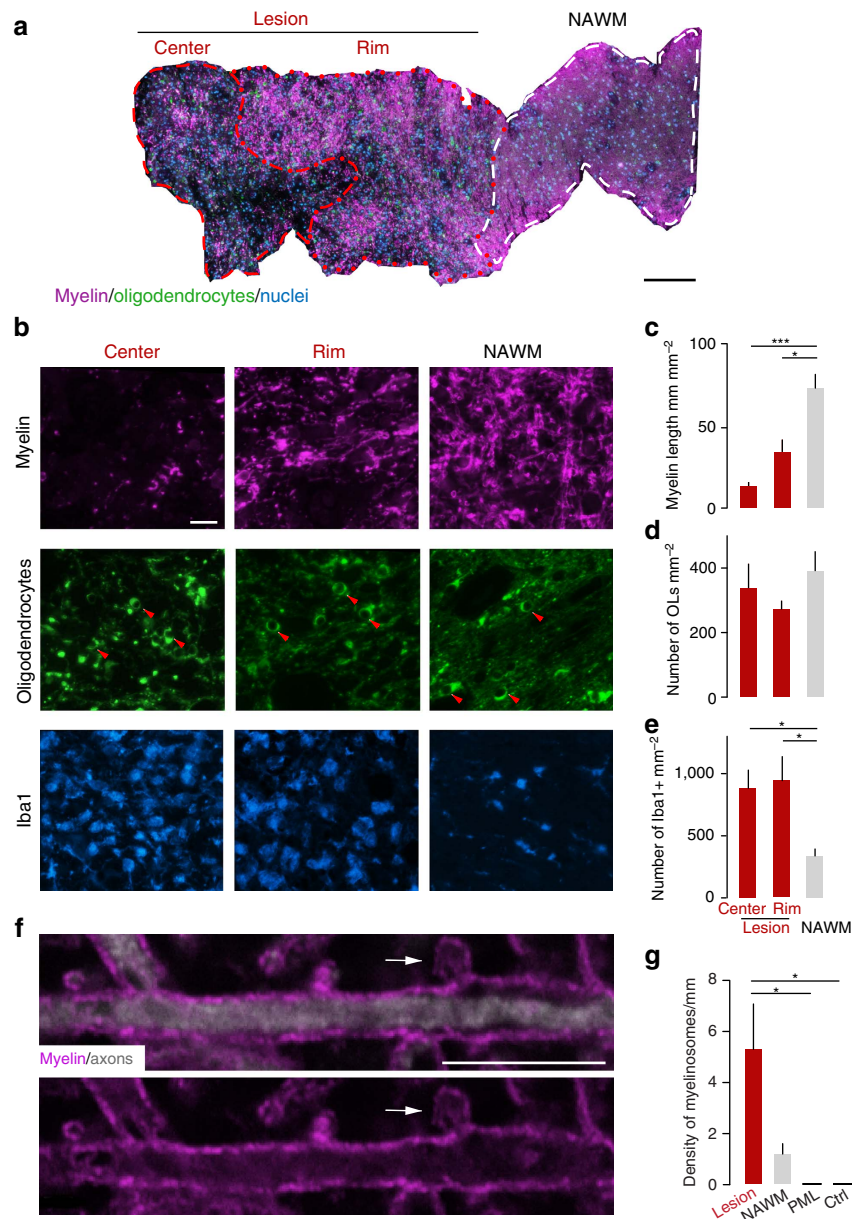


Figure 4 | Oligodendrocyte pathology in actively demyelinating MS lesions spreads centripetally and involves myelinosome formation. (a) Overview of a biopsy containing an actively demyelinating MS lesion stained for oligodendrocytes (NogoA, green), myelin (MBP, magenta) and nuclei (DAPI, cyan) that is segmented in three different areas, the lesion centre, lesion rim and normal-appearing white matter ('NAWM'). (b) Higher magnification views from areas as defined in a (also stained for Iba1 to reveal the activation of mononuclear phagocytes, cyan). Arrowheads, oligodendrocyte somata. (c–e) Quantification shows loss of myelin (c; lesion centre, $n = 25$ areas from 11 biopsies; rim of the lesion, $n = 15$ areas from 11 biopsies and NAWM, $n = 10$ areas from 4 biopsies), while oligodendrocyte density is preserved (d; lesion centre, $n = 23$ areas from 11 biopsies; rim of the lesion, $n = 29$ areas from 11 biopsies and NAWM, $n = 16$ areas from 7 biopsies) in areas of phagocyte infiltration (e; lesion centre, $n = 5$ areas from 3 biopsies; rim of the lesion, $n = 6$ areas from 3 biopsies and NAWM, $n = 5$ areas from 3 biopsies). (f) High-power view of a myelinosome (arrow; MBP, magenta; neurofilament, white) in an actively demyelinating MS lesion. (g) A comparably high density of myelinosomes is present in MS lesions, while only few are found in normal-appearing white matter in MS and none are detected in cases of PML or in controls without inflammatory CNS disease ('ctrl', $n = 3$ autopsy cases; NAWM, $n = 7$ biopsies; MS lesion, $n = 7$ biopsies; PML, $n = 4$ autopsy cases). (a) Scale bar, 200 μm ; (b) Scale bar, 20 μm ; (f) Scale bar, 10 μm . * $P < 0.05$; ** $P < 0.01$ (Kruskal-Wallis followed by Dunn's multiple comparison tests).

animal model^{16,33–35}. Similar alterations also occur during development when excess myelin is formed, for example, in the optic nerve²⁷. Still, when we analyzed models where the site of initial injury is expected to be at the oligodendrocyte soma (for example, ethidium bromide and cuprizone intoxication of oligodendrocytes, as well as a viral attack in human PML), we did not observe typical myelinosomes. This suggests that myelinosome formation is indicative of a centripetal progression of

oligodendrocyte damage, possibly caused, or at least promoted, by stressors that attack the cell's periphery.

What might the local stressors be that induce myelinosome formation in neuroinflammatory lesions? Our analysis indicates that anti-myelin antibodies that bind and activate the complement cascade are important mediators of myelinosome formation. Such antibody–complement complexes could opsonize the myelin surface and make myelin a target for processes of

bloodborne macrophages resulting in myelin stripping. This interpretation is in line with previous work implicating monocyte-derived macrophages as primary effectors of autoimmune demyelination¹⁶. In contrast, results obtained in the cuprizone model suggest that during toxic demyelination microglial cells rather than bone-marrow derived macrophages remove myelin³⁶. Thus, there appears to be a mechanistic distinction between phagocytic clearance of myelin debris during repair after toxic oligodendrocyte injury^{36–38}, and the inflammatory destabilization and stripping of myelin that mediates primary myelin damage in autoimmune disease models.

As antibody–complement complexes have also been detected in actively demyelinating MS lesions^{4,39}, it is conceivable that the described cascade of myelin damage is also operational in human MS⁴⁰. Indeed our analysis of actively demyelinating MS lesions showed that myelin was lost, while oligodendrocyte cell bodies were preserved. Notably, we focused our analysis on early active lesions, in which the presence of minor myelin constituents in the phagocyte cytoplasm indicates that demyelination has been initiated within the last 2–3 days²¹. While this time-frame should limit the contribution of cell replacement processes, it is difficult to exclude that some of the oligodendrocytes in the lesion centre and probably to a lesser extent at the lesion rim are recruited from local progenitor pools. Still our results are at least consistent with the view that in our samples of actively demyelinating MS lesions, which were classified as pattern I or pattern II lesions⁴¹, oligodendrocyte damage spreads in a centripetal pattern, with myelin as the first target of the immune attack. In other types of lesions, distinct mechanisms might well operate, as—for example—oligodendrocyte apoptosis is prominent in pattern III lesions^{4,41} and has also been described in particularly early, pre-phagocytic stages of actively demyelinating central nervous system (CNS) lesions^{3,42,43}. In this context, it is interesting to note that lesions in PML, a disease in which extensive oligodendrocyte apoptosis is induced by the JC virus²², show no evidence of myelinosome formation. In any case, as pattern I and II lesions presumably represent a majority of actively demyelinating MS lesions^{4,44}, our findings are relevant for many cases of MS. It was in such MS lesions, where we found a high density of myelinosomes comparable to that observed in acute EAE lesions. Interestingly, myelinosomes were present on normal-appearing axons in both EAE and MS lesions, indicating that myelin damage can be initiated independently of axon damage in neuroinflammatory lesions⁶ (Supplementary Fig. 7).

Taken together, our results suggest that the process of myelinosome formation is also present in actively demyelinating MS lesions, and that the presence of myelinosomes indicates the centripetal spread of morphological alterations in oligodendrocytes due to an immune attack on their periphery. Thus, interventions that target the cellular executors and molecular mediators of myelinosome formation might help to prevent myelin loss in MS.

Methods

Transgenic mice. C57BL/6 and Biozzi ABH mice were obtained from Janvier Labs and from Envigo, respectively. Reporter mice on a C57BL/6 background were crossed with Biozzi ABH mice to obtain (F1) *Thy1-YFP16/Biozzi* ABH mice, in which neurons were fluorescently labelled¹²; *PLP-GFP/Biozzi* ABH mice, in which the PLP promoter localizes the GFP specifically to oligodendrocytes¹⁰ and *CCR2^{RFP}+/Biozzi* ABH, in which circulating monocytes are labelled with RFP¹⁶. For the experiments, adult animals between 6 and 12 weeks of age from both sexes were used. All animal experiments were performed in accordance with regulations of the relevant animal welfare acts and protocols approved by the respective regulatory bodies (Regierung von Oberbayern).

EAE induction. Active EAE was induced in adult mice by immunization with recombinant MOG or a synthetic MOG peptide. Biozzi ABH and Biozzi ABH/BL6 animals were immunized as described previously⁷ and received an emulsion

containing 50 µg of purified recombinant MOG (N1-125) in complete Freund's adjuvant (containing 5–10 mg ml⁻¹ *Mycobacterium tuberculosis* H37 Ra, Sigma-Aldrich) at day 0 and day 7. On day 0, 1, 7 and 8 following immunization, 50 ng of pertussis toxin was administered intraperitoneally. Mice on a C57BL/6 background were immunized with either 200 µg of MOG peptide (N35-55) in complete Freund's adjuvant as previously described⁴⁵, followed by the injection of 400 ng of pertussis toxin at day 0 and day 2 after immunization; or 200 µg of recombinant rodent MOG (N1-125) in complete Freund's adjuvant, followed by the injection of 250 ng of pertussis toxin at day 0 and day 2 after immunization; or 100 µg of recombinant human MOG in complete Freund's adjuvant as previously described⁴⁶, followed by the injection of 240 ng of pertussis toxin at day 0 and day 2 after immunization.

After immunization, mice were weighed daily and neurological deficits were evaluated according to the following EAE score: 0, no clinical signs; 0.5, partial tail weakness; 1, tail paralysis; 1.5, gait instability or impaired righting ability; 2, hind limb paresis; 2.5, hind limb paresis with dragging of one foot; 3, total hind limb paralysis; 3.5, hind limb paralysis and fore limb paresis; 4, hind limb and fore limb paralysis; 5, death.

Ethidium bromide model. Chemical induction of demyelination was performed in *PLP-GFP/Biozzi* ABH mice as described previously⁴⁷. Briefly, mice received a single injection of 0.5 µl of ethidium bromide (1 mg ml⁻¹) into the ventral funiculus of the lumbar spinal cord, at a depth of 1.2 mm from the meningeal surface. Control animals were injected with 0.5 µl of saline using the same protocol. Mice were sacrificed 4 days after the injection.

Immunohistochemistry. Animals were euthanized with isoflurane and perfused transcardially with 20 ml of saline solution followed by 20–30 ml of 4% paraformaldehyde (PFA) in 0.1 M phosphate buffer. Spinal cords were dissected out and post-fixed in 4% PFA overnight at 4 °C. To cryo-protect the tissue, it was incubated in 30% sucrose in 1 × PBS for 48 h before embedding the specimens in Tissue-Tek (O.C.T., Sakura Finetek Europe B.V.) compound and freezing it at -20 °C. Subsequently 20–30 µm thick longitudinal sections of the lumbar spinal cord were cut and stained free-floating. The sections were rinsed three times for 10 min in 1 × PBS at room temperature and then incubated for 1 h at room temperature with 10% goat serum. To stain myelin, a rabbit anti-MBP antibody was applied after cold methanol pre-treatment and to label phagocytes, a rabbit anti-Iba1 (antibody dilution 1:200, Wako) was used. The sections were first incubated overnight at 4 °C in a solution containing 1% goat serum/ 0.1% Na₂S₂O₈/ 0.5% Triton/ 1 × PBS in which the primary antibody was diluted. The sections were washed three times with 1 × PBS and incubated with a goat anti-rabbit Alexa 594 secondary antibody (dilution 1:1,000, Thermo Fisher Scientific) for 4 h at 4 °C in a solution containing 1% goat serum/ 0.5% Triton/ 1 × PBS. All samples were counterstained with the Nissl-like dye, Neurotrace 640/660 (1:500, Thermo Fisher Scientific). After staining, the samples were mounted with Vectashield and covered with a coverslip glass sealed with nail polish.

Single-cell labelling. Healthy and immunized *PLP-GFP/Biozzi* ABH animals were used to study the morphology of single oligodendrocytes. Seven days after immunization (in case of EAE animals), mice were first anesthetized with ketamine and xylazine (ketamine 87 mg kg⁻¹, Bremer Pharma GmbH; xylazine 13 mg kg⁻¹, Serumwerk Bernburg AG) and the dorsal spinal cord was exposed as previously described⁴⁸. Then 0.5 µl of rabies virus SAD ΔG mCherry was injected in the white matter of the lumbar spinal cord with a glass capillary at a depth of 0.2–0.4 mm. Each mouse received two injections. Animals were then killed 9 days after rabies virus injections. For two-photon time-lapse experiments, mice were imaged at weight loss, at the onset of clinical symptoms, and at 1 or 2 days after the onset, and killed after the imaging session (6–9 days after rabies virus injection).

Quantifications of the process number and length of single oligodendrocytes were performed manually based on 3D-rendered confocal images stacks (rendering was performed with Imaris Scientific 3D/4D Image processing software). The total number of primary processes exiting the soma was counted and expressed as the average number of processes per OL; the length of all the processes (primary and other) was measured and divided by the number of processes to obtain average process length. Images from both healthy and EAE groups were analyzed by an evaluator blinded to the group status of the images.

Histopathology. For histopathological analysis Biozzi ABH, Biozzi ABH/BL6 and *Thy1-YFP16/BL6* mice were transcardially perfused with 4% PFA and paraffin-embedded according to standardized protocols. Stainings were done on 3–4 µm thick cross-sections of lumbar, thoracic and cervical spinal cords. LFB/PAS-staining was performed to assess demyelination, and the demyelinated area of spinal cross-sections (expressed as % of total white matter) was measured manually using Panoramic Viewer 1.15 software (http://www.3dhitech.com/panoramic_viewer). Images from both healthy and EAE groups were analyzed by an evaluator blinded to the group status of the images.

To assess axonal pathology, sections were stained with Bielschowsky silver impregnation. For automatic quantification of axon density a custom ruleset was created using Definiens Developer software (Definiens). First, regions of interest

were exported from 400 × slide scans in full resolution using Panoramic viewer. On these, tissue-background separation was performed and the total area of tissue calculated. Axons were detected and nuclei excluded based on their respective characteristic spectral properties (for example, brightness, RGB channel distribution) and morphology (for example, surrounded by cytoplasm). The number of axons was quantified within a lesion and in the respective perilesion area (considered as normal-appearing white matter). Axon numbers were first exported as axon density [$\#mm^{-2}$], and subsequently expressed in % normalized to the NAWM.

Immunostainings were carried out after antigen retrieval with microwave pre-treatment (citrate buffer, pH 6). Non-specific antibody binding was inhibited with 10% FCS in PBS. Immunostaining was done using following primary antibodies: rat anti-Mac3 (macrophages/activated microglia, 1:200, BD), T cells with an anti-CD3 (T cells, 1:50, Serotec). Bound primary antibodies were visualized by an avidin-biotin technique with 3,3'-diaminobenzidine 3 (DAB) as chromogen (haemalaun counterstaining of nuclei). Stained tissue sections were scanned at × 200 magnification using a panoramic 250 flash slide scanner (3D Histech Ltd). For the quantification of immune cell density, images were opened with the software Panoramic Viewer and exported as TIFF-files to ImageJ. To count the number of Mac3+ cells and the number of CD3+ cells, the 'cell counter' plugin was used.

Human tissue analysis. For histopathological analysis, brain sections derived from biopsies of MS lesions (classified as early active pattern I or II lesions as described previously³; for details see Supplementary Table 1), from autopsy cases of PML or from control white matter derived from autopsy cases without neuroimmunological diseases were fixed in 4% PFA and embedded in paraffin according to standardized protocols. Their use for scientific purposes was in accordance with institutional ethical guidelines and approved by the ethics committee of the University of Göttingen (Germany). Informed consent was obtained from all subjects. Immunostainings were carried out on 2–3 μ m thick sections after antigen retrieval with microwave pre-treatment (citrate buffer, pH 6). Non-specific antibody binding was inhibited with 10% FCS in PBS. The following primary antibodies were used: rabbit anti-myelin basic protein (MBP; 1:1,000, Dako), mouse anti-NogoA (oligodendrocytes, 1:10,000, mAb 11C7, a generous gift from M.E. Schwab, Brain Research Institute, ETH and University of Zürich) and Alexa647 pre-labelled rabbit anti-Iba1 (microglia/macrophages; 1:1,000, WAKO), antibody labelling was done with Alexa Fluor 647 antibody labelling kit, Molecular Probes) and anti-Neurofilament 200 (axons, 1:50, Dako). Bound primary antibodies were visualized using appropriate species-specific Alexa488- or Alexa555-conjugated secondary antibodies (all from Jackson ImmunoResearch Laboratories Inc) and counterstained with Neurotrace 435 (Thermo Fisher Scientific) or DAPI. Stained tissue sections were scanned at × 400 magnification using a panoramic 250 flash slide scanner.

Confocal microscopy. Samples were scanned on an upright FV1000 confocal microscopy system (Olympus) equipped with × 10/0.4 air, × 20/0.85 and × 60/1.42 oil immersion objectives. Images were acquired using standard filter sets and processed with ImageJ or Adobe Photoshop software.

Molecular manipulation of demyelination. To assess the contribution of antibodies and the complement system to myelinosome formation we used *Thy1-YFP16/BL6* mice. To induce primary demyelination the anti-MOG monoclonal antibody 8.18C5 (purified hybridoma supernatant with 35 μ g of mouse IgG per injection, kindly provided by Dr. Krishnamoorthy, Max-Planck Institute of Biochemistry) was injected intraperitoneally for three days starting from disease onset¹⁸. An IgG1 isotype control antibody (100 μ g per injection) was injected at similar time-points in the control group. To deplete complement 25 μ g of Cobra Venom Factor⁴⁹ (1 μ g μ l⁻¹, Quidel Corporation) was injected at the day of disease onset followed by three injections with anti-MOG monoclonal antibody 8.18C5 (at Onset, Onset + 1, Onset + 2). All mice were weighed and scored daily (as described above) and sacrificed three days after onset of clinical signs.

In vivo imaging. After anaesthesia with ketamine and xylazine (ketamine 87 mg kg⁻¹, xylazine 13 mg kg⁻¹) or with a combination of medetomidin (0.5 mg kg⁻¹, Orion Pharma), midazolam (5 mg kg⁻¹, Ratiopharm) and fentanyl (0.05 mg kg⁻¹, B. Braun Melsungen AG) animals were placed on a heating pad for 15 min. Tracheotomy and intubation were performed to minimize breathing artefacts by controlling respiration during imaging and the dorsal spinal cord was surgically exposed as previously described^{7,13,48}; the opening was constantly superfused with artificial cerebrospinal fluid (aCSF; prepared according to the protocol provided by Alzet, http://www.alzet.com/products/guide_to_use/csf_preparation.html). A spinal clamping device (spinal adaptor; Narishige STS-A) was used to stabilize the animal and an agarose well (4% agarose) surrounding the spinal opening was formed to keep the spinal cord covered with aCSF and to incubate with vital dyes as previously described¹³. For *in vivo* imaging, we used the following two-photon microscopes: a custom-built setup based on an Olympus FV300 and a commercially available Olympus FV1200 MPE. Both microscopes

were equipped with femto-second pulsed Ti:Sapphire lasers, which were attenuated by a polarization-based beam splitter or acousto-optical modulators, respectively.

To study myelin damage *in vivo*, immunized *Thy1-YFP16/Biozzi* ABH mice with an EAE score ≥ 2.5 were imaged. After bath application of MitoTracker Red (Thermo Fischer Scientific) at a concentration of 8 μ M for 30 min (an application scheme that primarily reveals myelin¹³) the spinal cord was carefully washed with aCSF before the imaging session. The laser was tuned to 910 nm to excite both YFP (axons) and MitoTracker Red (myelin) and fluorescence emission was detected using a green/red filter set (BA495-540, BA575-630). The presence of damaged axons, myelin debris and a high density of nuclei, labelled by the nuclear dye POPO-1 Iodide (Thermo Fischer Scientific) as previously described¹³, were used to identify inflamed areas of the dorsal white matter where imaging was performed. To monitor changes in myelin morphology over time, image stacks were acquired every 10 min for several hours. Time-lapse images were acquired with a × 25/1.25 water immersion objective with a pixel size of 0.082 μ m pixel⁻¹ and a pixel dwell time of 2 μ s.

To study oligodendrocyte damage at the single-cell level, *PLP-GFP/Biozzi* ABH mice were immunized and injected with SADAG-mCherry rabies virus (as described above). Mice were imaged at weight loss, at the onset of clinical symptoms or one and two days later. The laser was tuned to 840 nm to excite GFP (oligodendrocytes) and to 910 nm to visualize the virus-induced expression of mCherry. Single oligodendrocytes were imaged for 270–330 min; time-lapse images were obtained with a × 25/1.25 water immersion objective and a pixel dwell time of 2 μ s.

Similar imaging experiments were performed in healthy animals with or without SADAG-mCherry rabies virus injection, to make sure that the morphological changes in myelin structure and oligodendrocyte processes were not due to anaesthesia, surgery, photo-, dye- or virus-toxicity. In control mice neither signs of myelin alterations ($n = 3$ mice each imaged for 2–3 h) nor other signs of oligodendrocyte damage ($n = 5$ mice each imaged for 270–300 min) were detected even after several hours of imaging.

Tissue fixation for correlated light and electron microscopy. *Thy1-YFP16/Biozzi* ABH animals with an EAE score of ≥ 2.5 were transcardially perfused with 2.5% electron microscopy grade glutaraldehyde (GA) and 2% PFA in 0.1 M phosphate buffer (pH 7.2). The spinal cords were isolated and post-fixed in 2.5% GA/ 2% PFA overnight. The tissue was then embedded in 4% agarose and cut into thick sections (100–150 μ m) using a vibratome. To visualize myelin, MitoTracker Red (at a concentration of 8 μ M) was applied for 5 h at room temperature. Then sections were carefully washed three times for 15 min in 1 × PBS and mounted in 1 × PBS under a coverslip in imaging chambers built with parafilm spacers on a glass slide¹⁵.

NIRB and electron microscopy. MitoTracker Red-labelled samples were imaged on an Olympus FV1200 MPE using confocal laser excitation at 515 and 559 nm (ExDM405/488/559/635, BA505-540, BA575-620) to detect myelinosomes. Once the myelin out-folding was located, NIRB marks were placed using the Ti:Sapphire laser tuned to 910 nm and a pixel dwell time of 10 μ s pixel⁻¹ with a × 25/1.05 water objective¹⁵. To facilitate the detection of the structure of interest a bigger box of 100 × 100 μ m was burnt 2 μ m above the myelinosome. The serial sectioning of the tissue containing the NIRB marks was performed as described previously¹⁵. Electron micrographs were obtained at 120 KV using a JEOL JEM-1400 equipped with a Gatan Ultrascan 1000XP camera. Images were then processed with the software Reconstruct (<http://synapses.clm.utexas.edu/tools/reconstruct/reconstruct.stm>), while for rendering we used 3DS Max software (Autodesk).

Preparation and microscopy of high-pressure frozen samples. MOG-immunized Biozzi ABH mice and mice fed with 0.2% of the copper chelator cuprizone, were killed during the progressive phase of EAE (about 25–30 days after immunization) or 2 or 3 weeks after cuprizone feeding, respectively, by cervical dislocation and the spinal cord was quickly dissected. After embedding in 10% gelatine (Twee Torens), 200 μ m thick cross-sections of the spinal cord were cut with the help of the Leica vibratome VT1200S. The sections were assessed macroscopically and lesion-containing regions were cryofixed in 20% poly(vinylpyrrolidone) (Sigma-Aldrich) using the high-pressure freezer Leica HPM100. The tissue samples were then freeze-substituted using the 'tannic acid and OsO₄-protocol in a semi-automated fashion on the Leica AFS II as described previously^{27,28}. After Epon embedding of the tissue, the samples were cut with a Leica Ultracut S ultramicrotome into 0.5 μ m semithin sections. These cross-sections were subsequently stained with methylene blue/Azure II blue for 1 min to visualize myelin (lipid-rich) areas in the tissue. Areas devoid of this staining were considered regions of interest that contain lesions sites. Ultrathin sections of 50 nm thickness of these areas were cut thereafter and contrasted with 4% uranylacetate for 20 min at room temperature²⁸ (SPI-Chem). Electron micrographs were obtained on a LEO EM912AB electron microscope (Zeiss) equipped with an on-axis 2k CCD-camera (TRS) using the ITEM (Olympus) software.

Image processing and analysis. To analyze the spread of oligodendrocyte damage, *PLP-GFP/Biozzi* ABH mice were immunized and perfused with 4% PFA at

weight loss, onset of clinical symptoms, two days after onset, and 20 days after the second bout of EAE. Longitudinal sections of the lumbar spinal cord were cut and stained free-floating with an anti-MBP antibody and NeuroTrace 640/660 as described above. For each animal, we analyzed three lesions (each lesion was separated into the following regions: lesion centre, lesion border and adjacent normal-appearing white matter). ImageJ was used for processing and quantification of the areas. The 'cell counter' plugin was used to count the number of oligodendrocyte cell bodies and the number of all nuclei. The length of myelin was traced using the 'freehand line' tracing tool and the 'measure' plugin, and expressed in mm. The quantification of myelinosome density in *Thy1-YFP16/Biozzi* ABH at different time-points of the disease course, in *Thy1-YFP16/BL6* mice treated with 8.18C5/ CVF + 8.18C5 or isotype control antibody, mice immunized with recombinant MOG or human MOG, and mice injected with ethidium bromide, as well as in human samples (MS, control and PML cases), was performed as follows. Sections were stained with anti-MBP as described above. High magnification confocal images were taken with a $\times 60/1.42$ oil objective (with $\times 4$ zoom at $0.082 \mu\text{m pixel}^{-1}$) at the border of the lesions. Quantification was performed using ImageJ and its 'trace' and 'measure' plugins: the length of each axon in the stack was measured and the density of myelinosomes was expressed as number of myelinosomes per total mm of axons analyzed. Myelinosomes were defined as bulb-like myelin out-foldings that were still connected to the main myelin sheath. For the analysis of the human samples, images were opened with the software Panoramic Viewer (http://www.3dhistech.com/panoramic_viewer) and exported as TIFF-files to ImageJ. To count the number of Iba1+ cells and the number of NogoA+ cells, the 'cell counter' plugin was used. The length of myelin was measured with the 'trace' and 'measure' plugins, as described before. The density of myelinosomes was measured as described above for the murine model.

Statistical analysis. Results are given as mean \pm s.e.m. Data sets were tested for normal distribution using the D'Agostino–Pearson test. Those data sets for which a normal distribution could be assumed were then compared using student *t*-test or, if there were more than two samples, analyzed using one-way ANOVA followed by Bonferroni's multiple comparison tests. When normal distribution could not be assumed, the nonparametric Mann–Whitney test or, if there were more than two samples, the Kruskal–Wallis followed by Dunn's multiple comparison tests were chosen. Statistical analyses were performed with GraphPad Prism software.

Data availability. All data generated or analyzed during this study are included in the published article (and its Supplementary Information file) or are available from the corresponding authors upon reasonable request.

References

- Popescu, B. F. & Lucchinetti, C. F. Pathology of the demyelinating diseases. *Annu. Rev. Pathol.* **60**, 46–58 (2012).
- Simons, M., Misgeld, T. & Kerschensteiner, M. A unified cell biological perspective on axon-myelin injury. *J. Cell Biol.* **206**, 335–345 (2014).
- Barnett, M. H. & Prineas, J. W. Relapsing and remitting multiple sclerosis: pathology of the newly forming lesion. *Ann. Neurol.* **55**, 458–468 (2004).
- Lucchinetti, C. *et al.* Heterogeneity of multiple sclerosis lesions: implications for the pathogenesis of demyelination. *Ann. Neurol.* **47**, 707–717 (2000).
- Siffrin, V. *et al.* *In vivo* imaging of partially reversible th17 cell-induced neuronal dysfunction in the course of encephalomyelitis. *Immunity* **33**, 424–436 (2010).
- Nikić, I. *et al.* A reversible form of axon damage in experimental autoimmune encephalomyelitis and multiple sclerosis. *Nat. Med.* **17**, 495–499 (2011).
- Sorbara, C. D. *et al.* Pervasive axonal transport deficits in multiple sclerosis models. *Neuron* **84**, 1183–1190 (2014).
- Bartholomäus, I. *et al.* Effector T cell interactions with meningeal vascular structures in nascent autoimmune CNS lesions. *Nature* **462**, 94–98 (2009).
- Amor, S., Smith, P. A., Hart, B. & Baker, D. Biozzi mice: of mice and human neurological diseases. *J. Neuroimmunol.* **165**, 1–10 (2005).
- Mallon, B., Shick, H. E., Kidd, G. J. & Macklin, W. B. Proteolipid promoter activity distinguishes two populations of NG2-positive cells throughout neonatal cortical development. *J. Neurosci.* **22**, 876–885 (2002).
- Wickersham, I. R., Finke, S., Conzelmann, K.-K. & Callaway, E. M. Retrograde neuronal tracing with a deletion-mutant rabies virus. *Nat. Methods* **4**, 47–49 (2007).
- Feng, G. *et al.* Imaging neuronal subsets in transgenic mice expressing multiple spectral variants of GFP. *Neuron* **28**, 41–51 (2000).
- Romanelli, E. *et al.* Cellular, subcellular and functional *in vivo* labeling of the spinal cord using vital dyes. *Nat. Protoc.* **8**, 481–490 (2013).
- Bishop, D. L., Misgeld, T., Walsh, M. K., Gan, W. B. & Lichtman, J. W. Axon branch removal at developing synapses by axosome shedding. *Neuron* **44**, 651–661 (2004).
- Bishop, D. *et al.* Near-infrared branding efficiently correlates light and electron microscopy. *Nat. Methods* **8**, 568–570 (2011).
- Yamasaki, R. *et al.* Differential roles of microglia and monocytes in the inflamed central nervous system. *J. Exp. Med.* **211**, 1533–1549 (2014).
- Lyons, J. A., San, M., Happ, M. P. & Cross, A. H. B cells are critical to induction of experimental allergic encephalomyelitis by protein but not by a short encephalitogenic peptide. *Eur. J. Immunol.* **29**, 3432–3439 (1999).
- Urich, E., Gutcher, I., Prinz, M. & Becher, B. Autoantibody-mediated demyelination depends on complement activation but not activatory Fc-receptors. *Proc. Natl Acad. Sci. USA* **103**, 18697–18702 (2006).
- Zipfel, P. F. & Skerka, C. Complement regulators and inhibitory proteins. *Nat. Rev. Immunol.* **9**, 729–740 (2009).
- Ramaglia, V. *et al.* C3-dependent mechanism of microglial priming relevant to multiple sclerosis. *Proc. Natl Acad. Sci. USA* **109**, 965–970 (2012).
- Brück, W. *et al.* Oligodendrocytes in the early course of multiple sclerosis. *Ann. Neurol.* **35**, 65–73 (1994).
- Richardson-Burns, S. M., Kleinschmidt-DeMasters, B. K., DeBiasi, R. L. & Tyler, K. L. Progressive multifocal leukoencephalopathy and apoptosis of infected oligodendrocytes in the central nervous system of patients with and without AIDS. *Arch. Neurol.* **12**, 1930–1936 (2002).
- Ludwin, S. K. & Johnson, E. S. Evidence for a 'dying-back' gliopathy in demyelinating disease. *Ann. Neurol.* **3**, 301–305 (1981).
- Lin, W. & Popko, B. Endoplasmic reticulum stress in disorders of myelinating cells. *Nat. Neurosci.* **4**, 379–385 (2009).
- Hisahara, S. *et al.* Targeted expression of baculovirus p35 caspase inhibitor in oligodendrocytes protects mice against autoimmune-mediated demyelination. *EMBO J.* **19**, 341–348 (2000).
- Lin, W. *et al.* The integrated stress response prevents demyelination by protecting oligodendrocytes against immune-mediated damage. *J. Clin. Invest.* **117**, 448–456 (2007).
- Snaidero, N. *et al.* Myelin membrane wrapping of CNS axons by PI(3,4,5)P3-dependent polarized growth at the inner tongue. *Cell* **156**, 277–290 (2014).
- Möbius, W. *et al.* Electron microscopy of the mouse central nervous system. *Methods Cell Biol.* **96**, 475–512 (2010).
- Aggarwal, S. *et al.* Myelin membrane assembly is driven by a phase transition of myelin basic proteins into a cohesive protein meshwork. *PLoS Biol.* **11**, e1001577 (2013).
- Weil, M. T. *et al.* Loss of myelin basic protein function triggers myelin breakdown in models of demyelinating diseases. *Cell Rep.* **16**, 2211–1247 (2016).
- Stendel, C. *et al.* Peripheral nerve demyelination caused by a mutant Rho GTPase guanine nucleotide exchange factor, frabin/FGD4. *Am. J. Hum. Genet.* **81**, 158–164 (2007).
- Bolino, A. *et al.* Disruption of Mtmr2 produces CMT4B1-like neuropathy with myelin outfolding and impaired spermatogenesis. *J. Cell. Biol.* **167**, 711–721 (2004).
- Périer, O. & Grégoire, A. Electron microscopic features of multiple sclerosis lesions. *Brain* **88**, 937–952 (1965).
- Lampert, P. W. & Kies, M. W. Mechanism of demyelination in allergic encephalomyelitis of guinea pigs. An electron microscopic study. *Exp. Neurol.* **18**, 210–223 (1967).
- Epstein, L. G., Prineas, J. W. & Raine, C. S. Attachment of myelin to coated pits on macrophages in experimental allergic encephalomyelitis. *J. Neurol. Sci.* **61**, 341–348 (1983).
- Lampron, A. *et al.* Inefficient clearance of myelin debris by microglia impairs remyelinating processes. *J. Exp. Med.* **212**, 481–495 (2015).
- Kotter, M. R., Setzu, A., Sim, F. J., Van Rooijen, N. & Franklin, R. J. Macrophage depletion impairs oligodendrocyte remyelination following lysolecithin-induced demyelination. *Glia* **35**, 204–212 (2001).
- Miron, V. E. & Franklin, R. J. M. Macrophages and CNS remyelination. *J. Neurochem.* **130**, 165–171 (2014).
- Storch, M. K. *et al.* Multiple sclerosis: *in situ* evidence for antibody- and complement-mediated demyelination. *Ann. Neurol.* **43**, 465–471 (1998).
- Spadaro, M. *et al.* Histopathology and clinical course of MOG-antibody-associated encephalomyelitis. *Ann. Clin. Transl. Neurol.* **2**, 295–301 (2015).
- Lassmann, H., Brück, W. & Lucchinetti, C. Heterogeneity of multiple sclerosis pathogenesis: implications for diagnosis and therapy. *Trends Mol. Med.* **7**, 115–121 (2001).
- Prineas, J. W. & Parratt, J. D. E. Oligodendrocytes and the early multiple sclerosis lesion. *Ann. Neurol.* **72**, 18–31 (2012).
- Brück, W. *et al.* Neuromyelitis optica lesions may inform multiple sclerosis heterogeneity debate. *Ann. Neurol.* **72**, 385–394 (2012).
- Metz, I. *et al.* Pathologic heterogeneity persists in early active multiple sclerosis lesions. *Ann. Neurol.* **75**, 728–738 (2014).
- Stromnes, I. M. & Goverman, J. M. Active induction of experimental allergic encephalomyelitis. *Nat. Protoc.* **1**, 1810–1819 (2006).
- Fillatreau, S., Sweeney, C. H., McGeachy, M. J., Gray, D. & Anderton, S. M. B cells regulate autoimmunity by provision of IL-10. *Nat. Immunol.* **3**, 944–950 (2002).

47. Fushimi, S. & Shirabe, T. The reaction of glial progenitor cells in remyelination following ethidium bromide-induced demyelination in the mouse spinal cord. *Neuropathology* **4**, 233–242 (2002).
48. Misgeld, T., Nikic, I. & Kerschensteiner, M. *In vivo* imaging of single axons in the mouse spinal cord. *Nat. Protoc.* **2**, 263–268 (2007).
49. Verschoor, A. *et al.* A platelet-mediated system for shuttling blood-borne bacteria to CD8 α ⁺ dendritic cells depends on glycoprotein GPIb and complement C3. *Nat. Immunol.* **12**, 1194–1201 (2011).

Acknowledgements

We would like to thank A. Schmalz, M. Adrian, Y. Hufnagel and K. Wullmann for excellent technical assistance and D. Matzek, B. Stahr, M. Budak, N. Budak and Lj. Marinković for animal husbandry. We thank G. Krishnamoorthy (Max Planck Institute of Biochemistry) for the gift of 8.18.C5 antibody, M.E. Schwab (Brain Research Institute, ETH and University of Zürich) for the mAb 11C7 and W. Macklin (University of Colorado) for the PLP-GFP mice. Work in M.Ke.'s laboratory is financed through grants from the German Federal Ministry of Research and Education (BMBF; Competence Network Multiple Sclerosis), the European Research Council under the European Union's Seventh Framework Program (FP/2007-2013; ERC Grant Agreement n. 310932), and the 'Verein Therapieforschung für MS-Kranke e.V.'. T.M. is supported by the Center for Integrated Protein Science Munich (CIPSM, EXC 114), the European Research Council under the European Union's Seventh Framework Program (FP/2007-2013; ERC Grant Agreement n. 616791) and the German-Israeli Foundation. T.M. and M.S. are associated to the German Center for Neurodegenerative Diseases (DZNE Munich). M.Ke., M.S. and T.M. are further supported by the Munich Center for Systems Neurology (SyNergy; EXC 1010) and M.Ke. and T.M. additionally by the DFG Priority Program 1710. M.Ke., E.M. and M.S. are supported by the DFG Collaborative Research Centre/Transregio 128 (Projects B8, B13). M.Ke., D.M., T.M. and M.S. are supported by the Hertie-Foundation (collaboration with the Myelin Repair Foundation for M.Ke. and M.S.). K.-K.C. and T.M. are supported by the grants from the DFG (Collaborative Research Center 870). D.M. holds a stipendiary professorships of the Swiss National Science Foundation (No. PP00P3_152928) and is supported by the Klaus-Tschira Foundation, Gebert-Rüf Foundation and by the Swiss MS Society.

Author contributions

E.R., T.M. and M.Ke. conceived the experiments. E.R., A.M., I.N., S.P. and F.E.H.M. performed imaging experiments and image analysis. D.M., M.Kr., I.M. and W.B. provided and characterized human tissue samples and performed histopathological analysis. E.R., M.-T.W., M.R., M.S. and D.B. contributed to ultrastructural analysis; E.R., A.M., M.S.W. and E.M. contributed to EAE experiments and A.G. and K.-K.C. provided and characterized rabies virus samples. E.R., T.M. and M.Ke. wrote the paper.

Additional information

Supplementary Information accompanies this paper at <http://www.nature.com/naturecommunications>

Competing financial interests: The authors declare no competing financial interests.

Reprints and permission information is available online at <http://npg.nature.com/reprintsandpermissions/>

How to cite this article: Romanelli, E. *et al.* Myelinosome formation represents an early stage of oligodendrocyte damage in multiple sclerosis and its animal model. *Nat. Commun.* **7**, 13275 doi: 10.1038/ncomms13275 (2016).

Publisher's note: Springer Nature remains neutral with regard to jurisdictional claims in published maps and institutional affiliations.



This work is licensed under a Creative Commons Attribution 4.0 International License. The images or other third party material in this article are included in the article's Creative Commons license, unless indicated otherwise in the credit line; if the material is not included under the Creative Commons license, users will need to obtain permission from the license holder to reproduce the material. To view a copy of this license, visit <http://creativecommons.org/licenses/by/4.0/>

© The Author(s) 2016