

The relationship between heart rate and mortality of patients with acute coronary syndromes in the coronary intervention era

Meta-analysis

Tan Xu, MD^a, Youqin Zhan, MD^a, Jianping Xiong, MD^a, Nan Lu, MD^a, Zhuoqiao He, MD^a, Xi Su, MD^b, Xuerui Tan, MD^a

Abstract

Background: Most of acute coronary syndromes (ACS) were receiving intervention treatment a high overall rate of coronary angiography in the modern medical practice.

Consequently, we conduct a review to determine the heart rate (HR) on the prognosis of ACS in the coronary intervention era.

Methods: PubMed, EMBASE, MEDLINE, and the Cochrane Library was systematically searched up to May 2016 using the search terms “heart rate,” “acute coronary syndrome,” “acute myocardial infarction,” “ST elevation myocardial infarction,” “non-ST-segment elevation.” The outcome of interest was all-cause mortality. All analyses were performed using Review Manager.

Results: Database searches retrieved 2324 citations. Eleven studies enrolling 156,374 patients were included. In-hospital mortality was significantly higher in the elevated HR group compared to the lower HR group (pooled RR 2.04, 95%CI 1.80–2.30, $P < 0.0001$). Individuals with elevated admission HR had increased risk of long-term mortality (Pooled RR = 1.63, 95%CI 1.27–2.10, $P = 0.008$) compared to lower admission HR. The pooled results showed elevated discharge and resting HR were related to increased mortality of patients with ACS (pooled RR 1.88, 95% CI 1.02–3.47, $P = 0.04$; pooled RR 2.14, 95%CI 1.37–3.33, $P < 0.0001$, respectively).

Conclusion: Elevated HR may increase the mortality of ACS patients in the percutaneous coronary intervention era.

Abbreviations: ACS = acute coronary syndromes, CAD = coronary artery diseases, CI = confidence intervals, HR = heart rate, PCI = percutaneous coronary intervention, RR = relative risks.

Keywords: acute coronary syndrome, heart rate, percutaneous coronary intervention

1. Introduction

More and more studies have revealed that the heart rate (HR) is a risk factor of mortality and cardiovascular morbidity in coronary artery disease, including patients with stable or acute coronary syndromes.^[1–7] Diaz et al^[1] has explored that patients suspected or proven coronary artery diseases (CAD) with resting HR > 83 bpm had a significantly higher risk for total mortality and

cardiovascular mortality when compared with the HR ≤ 62 bpm group. In the modern era of primary percutaneous coronary intervention, an observational study^[2] has showed that hazard ratio for all-cause mortality in the elevated admission HR group (>70 bpm) was 1.59 for STEMI patients when compared with patients with an HR ≤ 70 bpm. Similarly, Antoni and his colleagues^[8] has concluded that patients with a discharge HR of ≥ 70 bpm had a 2 times increased risk of cardiovascular mortality at 1- and 4-year follow-up compared with patients with an HR < 70 bpm. However, another study^[6] prospectively enrolled 30,339 acute coronary syndromes (ACS) patients has demonstrated that admission HR >90 bpm or <50 bpm were associated with an increased risk of mortality. That means the relationship between HR and major adverse cardiac events followed a J-shaped curve with worst outcomes in the lowest and highest HR groups. Currently, some ACS risk models such as the PURSUIT^[9] and GRACE^[10] risk models have also included admission HR as a prognostic factor, modeled as a linear function. For example, in the GRACE risk model, the risk of events increased by 30% for every 30 beat increase in the heart rate (adjusted hazard ratio = 1.30; 95% CI = 1.23–1.47).

Inevitably, there calls into question the validity of a uniform “lower is better” paradigm or “J-shaped” between the heart rate and the prognosis of ACS patients in the contemporary practices. Most of ACS patients were receiving intervention treatment with a high overall rate of coronary angiography in the modern medical practice. Consequently, we conduct a systematic review and meta-analysis of clinical trials to determine the effect of HR on the prognosis of ACS patients in the coronary intervention era.

Editor: Leonardo Gilardi.

Funding: The study was partially supported by the National Natural Science Foundation of China (NO 81473063).

Authorship: Conceived and designed the experiments—TX, XT, and JX; performed the experiments—TX, YZ, NL, and ZH; analyzed the data—TX, XT, and XS; wrote the paper—TX, YZ. All authors read and approved the final manuscript.

The authors have no conflicts of interest to disclose.

^a Department of Cardiology, First Affiliated Hospital of Shantou University Medical College, Shantou, Guangdong, ^b Department of Cardiology, Wuhan Asian Heart Hospital, Wuhan, Hubei, China.

* Correspondence: Xuerui Tan and Xi Su (e-mail: tanxuerui@vip.sina.com)

Copyright © 2016 the Author(s). Published by Wolters Kluwer Health, Inc. All rights reserved.

This is an open access article distributed under the Creative Commons Attribution-Share Alike License 4.0, which allows others to remix, tweak, and build upon the work, even for commercial purposes, as long as the author is credited and the new creations are licensed under the identical terms.

Medicine (2016) 95:46(e5371)

Received: 15 September 2016 / Received in final form: 16 October 2016 /

Accepted: 17 October 2016

<http://dx.doi.org/10.1097/MD.0000000000005371>

2. Material and methods

Our systematic review and meta-analysis were performed following the guidelines set forth in Preferred Reporting Items for Systematic Reviews and Meta-Analyses.^[11] And the ethical approval was not necessary because our meta-analysis was based on data from previously published studies.

2.1. Search strategy

PubMed, EMBASE, MEDLINE, and the Cochrane Library was systematically searched up to May 2016 using the search terms “heart rate,” “acute coronary syndrome,” “acute myocardial infarction,” “ST elevation myocardial infarction,” “non-ST-segment elevation” (see Fig. 1 for detailed search strategy). English language restriction was applied. The search was conducted by 2 independent researchers (TX and YZ).

2.2. Selection criteria

We included clinical trials to investigate the relationship between the heart rate and the prognosis of ACS. Eligible studies included adult patients with ACS including ST segment elevated myocardial infarction and non-ST segment elevated ACS treated with optimal percutaneous coronary intervention (PCI) and drug strategy. Studies were excluded if the reperfusion strategies were mainly coronary artery bypass grafting or fibrinolytic therapy.

Studies identified by the search strategy were screened by the title and abstract and excluded if they were not relevant to the research target by 2 investigators (TX and YZ). According to inclusion and exclusion criteria, the potentially eligible studies were then retrieved in the full text. When the eligibility of the studies exist divergence, a third investigator (XT) made the final decision. Citations of retrieved full text were also screened for eligible studies.

2.3. Data extraction and validity assessment

Data extraction was independently performed by 2 investigators (TX and YZ). Divergences were resolved by the aforementioned 2 reviewers’ consensus. Details of the publication (i.e., authors, year of publication), inclusion/exclusion criteria, and numbers of patients actually included in the analysis, demographics (patients’ age and gender), cardiovascular risk factors of the enrolled patients, percent of PCI strategies, and outcome definitions and events were collected and collated, mainly all-cause mortality.

The elevated HR included in the systemic review and meta-analysis, defined as the highest categories of HR, the other as lower HR. If the included studies have evaluated the adjusted confounding factors, the adjusted hazard ratio should be given priority to be extracted.

The outcomes of interest were (i) all-cause in-hospital mortality; (ii) long-term all-cause mortality. Endpoint definitions of the individual studies were included in the final analysis.

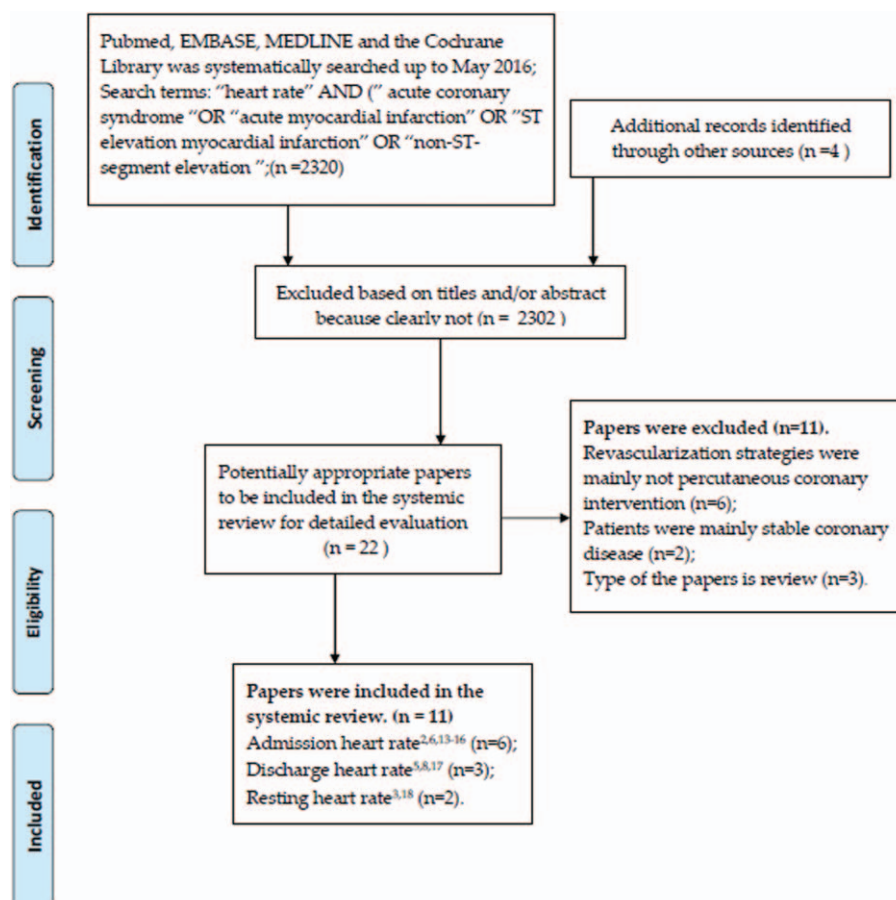


Figure 1. Flowchart of study selection.

Table 1
Study and participant summary characteristics on admission heart rate.

Trial on admission heart rate	Population	Number of pts	Mean age (y)	Male (%)	Coronary intervention	Groups for multivariate analysis (bpm)	Events	Median follow-up and rate
Saraiva et al ^[16]	ACS	1720	67	70.2	PCI 70.2%	Lower: <82; Elevated: ≥82	All-cause mortality	In-hospital; 12 m (89%)
Parodi et al ^[15]	AMI	2477	65	72.87	pPCI 100%	Lower: <80; Elevated: ≥80	Death; Re-infarction; Target vessel revascularization	In-hospital; 6 m (98%).
Honda et al ^[14]	AMI	200	69	72	PCI 92.5%	Lower: <92; Elevated: ≥92	In-hospital death	In-hospital
Bangalore et al ^[13]	NSTE-ACS	135164	67	59.7	PCI 44%	Reference:60-69; Lower: <50; Elevated:>130	Death/Re-infarction /stroke	In-hospital
Noman et al ^[2]	STEMI	2222	63	71.26	pPCI 100%	Lower: ≤70; Elevated:>70	All-cause mortality	In-hospital; 559d (100%)
Perne et al ^[6]	AMI	6168	69	70.4	PCI 77.6%	Lower:≤90; Elevated:> 90	All-cause mortality	3m (49%)

ACS = acute coronary syndromes, AMI = acute myocardial infarction, NSTE-ACS = non-ST elevated acute coronary syndrome, PCI = percutaneous coronary intervention.

2.4. Statistical analysis

All the potentially cites of the systemic review and meta-analysis were managed by the EndNote software. All analyses were performed using Review Manager (RevMan version 5.3; Cochrane Collaboration, Oxford, UK). The unadjusted and multivariable-adjusted risk estimates for categorical (highest vs lower categories) outcome data (relative risks, hazard risks, and 95% confidence intervals) were transformed logarithmically in each study. The I^2 statistic was used to test for heterogeneity, and the studies were pooled using fixed effects models with low heterogeneity ($I^2 < 50\%$).^[12] Otherwise, a random-effects model was used. Relative risks (RR) were used to pool outcomes with a 2-sided significance level of 5%. Individual trial and summary results are reported with 95% confidence intervals (CI). Sensitivity analysis was conducted to determine if an individual study was responsible for the observed effect by omitting 1 study and the risk of publication bias was assessed by examining the funnel plots. The statistical tests were 2-tailed with $P < 0.05$ chosen at the level of significance.

3. Results

Database searches retrieved 2324 citations. Most papers were excluded based on titles and/or abstract because clearly not relevant. Twenty-two potentially appropriate papers to be included for the full text review. According to the inclusion criteria, 11 studies enrolling 156,374 patients were eventually include in the systemic review. Six studies^[2,6,13-16] showed the relationship between admission HR and mortality of patients with ACS. Three studies^[5,8,17] measured the influence of discharge HR on the mortality of patients with ACS. The other 2 studies^[3,18] have demonstrated the relationship between resting HR and mortality of ACS patients.

3.1. Description of included studies and quality assessment

The baselines of study characteristics are summarized in Tables 1–3. Average age across all studies 65 years, 72.21% of patients were male. Patient follow-up ranged from 3 months to 5 years (median 23 months). The percentage of PCI strategies ranges from 44% to 100%. The revascularization strategy of 5 studies were total PCI.^[2,3,5,8,15] Three studies^[6,13,15] verified the J-shaped relationship between HR and mortality of patients with ACS. In despite of different HR levels, the aforementioned 3 studies all verified lower or elevated heart rate to be related to mortality of patients with ACS. The potential confounding adjusted factors differed across studies and the primary adjusted factors were age, sex, heart failure, and beta-blocker used.

Study quality, where specified, was relatively high (Table 4). Based on the NOS quality assessment, 4 studies were defined as high quality (1 study scored 9 and 5 studies scored 7), and the other 5 studies were defined as moderate quality (3 studies scored 6 and 2 studies scored 5)

3.2. Quantitative data synthesis

3.2.1. Admission heart rate and in-hospital mortality. All-cause in-hospital mortality were significant higher in the elevated HR group compared to the lower HR group (pooled RR 2.04, 95% CI 1.80–2.30, $P < 0.0001$; $I^2 = 31\%$) (Fig. 2). Unfortunately, the definition of elevated heart rate or lower admission heart rate is different. The dividing line mainly ranged from 70 bpm to 90 bpm. In the maximum weight study,^[13] the elevated heart rate was >130 bpm.

3.2.2. Admission heart rate and long-term mortality. This forest plot presents the association between elevated HR and long-term mortality compare to lower HR (Fig. 3). A statistical

Table 2
Study and participant summary characteristics on discharge heart rate.

Trial on discharge heart rate	Population	Number of pts	Mean age (y)	Male (%)	Coronary intervention	Groups for multivariate analysis (bpm)	Events	Median follow-up and rate
Antoni et al ^[8]	AMI	1453	61	76	pPCI 100%	Lower: <70; Elevated:≥70	All-cause mortality	40 m (99%)
Jensen et al ^[9]	ACS (64.4%)	2029	63	76.15	PCI 100%	Reference: <60; Quintile2: 60–69; Quintile3: 70–79; Quintile 4:80–89; Quintile5:>90	all-cause mortality; cardiovascular death/myocardial infarction	24 m (NA)
Seronde et al ^[17]	AMI	3079	66	69.54	PCI 83.27%	Lower: ≤75/70; Elevated: >75/70; Quartile1:<60; Quartile 4:>75	All-cause mortality	5 y (95%)

ACS = acute coronary syndromes, AMI = acute myocardial infarction, PCI = percutaneous coronary intervention.

Table 3

Study and participant summary characteristics on resting heart rate.

Trial on discharge heart rate	Population	Number of pts	Mean age (y)	Male (%)	Coronary intervention	Groups for multivariate analysis (bpm)	Events	Median follow-up and rate
Facila et al ^[18]	AMI	1054	67	70.6	PCI 55.81%	Lower: <70; Elevated: ≥ 70	Overall mortality	382 d (91.2%)
Wang et al ^[3]	ACS	808	61	74.6	PCI 100%	Tertiles 1: <61; Tertiles 2: 61–76; Tertiles 3: >76	MACE	1 y (96.12%)

MACE: a composite of cardiac death, nonfatal recurrent myocardial infarction, ischemic-driven revascularization, and ischemic stroke.

ACS = acute coronary syndromes, AMI = acute myocardial infarction, PCI = percutaneous coronary intervention.

Table 4

Assessment of study quality.

References	Quality Indications of Newcastle–Ottawa Scale Total								Total
	1	2	3	4	5	6	7	8	
Saraiva et al ^[16]	Yes	Yes	No	Yes	No	Yes	Yes	No	5
Parodi et al ^[15]	Yes	Yes	Yes	Yes	Yes	Yes	No	Yes	7
Honda et al ^[14]	Yes	Yes	No	Yes	Yes	Yes	Yes	No	6
Bangalore et al ^[13]	Yes	Yes	Yes	Yes	No	Yes	Yes	Yes	7
Norman et al ^[2]	Yes	Yes	No	Yes	Yes	Yes	Yes	Yes	7
Perne et al ^[6]	No	Yes	Yes	Yes	Yes	Yes	No	No	5
Antoni et al ^[8]	Yes	Yes	Yes	Yes	Yes	2Yes	Yes	Yes	9
Jensen et al ^[5]	No	Yes	Yes	Yes	Yes	Yes	Yes	No	7
Seronde et al ^[17]	Yes	No	Yes	Yes	Yes	Yes	Yes	Yes	7
Facila et al ^[18]	No	Yes	Yes	Yes	Yes	Yes	No	Yes	6
Wang et al ^[3]	Yes	Yes	Yes	No	No	Yes	Yes	Yes	6

(1) Representativeness of the exposed cohort; (2) selection of the nonexposed cohort; (3) ascertainment of exposure; (4) demonstration that outcome of interest was not present at start of study; (5) comparability of cohorts on the basis of the design or analysis; (6) comparability of cohorts on the basis of the design or analysis; (7) was follow-up long enough for outcomes to occur; (8) adequacy of follow-up of cohorts.

heterogeneity ($I^2=69%$) was observed, so the random-effect model was used. The meta-analysis of the 4 studies suggested that individuals with elevated admission HR had an increased risk of long-term mortality (pooled RR=1.63, 95%CI 1.27–2.10, $P=0.008$) compared to lower admission HR. In this 4 included studies, the differences of elevated or lower heart rate are relatively minor.

3.2.3. Discharge heart rate and long-term mortality. Three included studies^[5,8,17] evaluated the relationship between discharge HR and long-term mortality. The follow-up duration ranged from 24 months to 5 years. The pooled results showed that elevated discharge HR was related to the increased mortality of patients with ACS (pooled RR 1.88, 95% CI 1.02–3.47, $P=0.04$; $I^2=74%$) (Fig. 4). Seronde et al^[17] presented different discharge HR categories and follow-up duration, ± 70 bpm as the

dividing level for heart rate and 5 years follow-up mortality were included in the meta-analysis. Similarly, the included follow-up duration of Antoni study^[8] was 4 years.

3.2.4. Resting heart rate and long-term mortality or MACE.

The definitions of resting HR were similar in the 2 included studies, between day 3 and 7 of the event once the patient was stable,^[18] or on 72 hours after onset of ACS during hospitalization.^[3] Elevated resting HR increased mortality or MACE of patients with ACS (pooled RR 2.14, 95% CI 1.37–3.33, $P<0.0001$, $I^2=0%$) (Fig. 5). MACE, major adverse cardiovascular events, includes a composite of cardiac death, nonfatal recurrent myocardial infarction, ischemic-driven revascularization, and ischemic stroke. The elevated heart rate of aforementioned 2 studies were similar, >76 bpm^[3] and ≥70 bpm,^[18] respectively. However, the events of interesting in the 2 included studies were not the same.

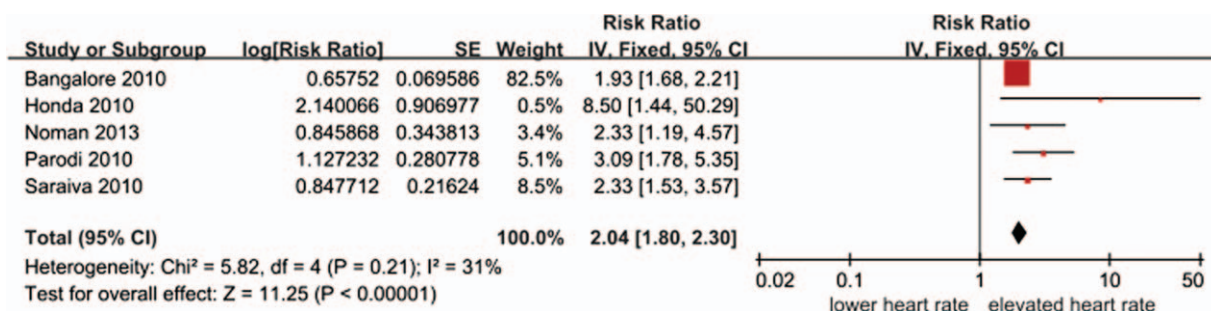


Figure 2. Relationship between the admission heart rate and in-hospital mortality.

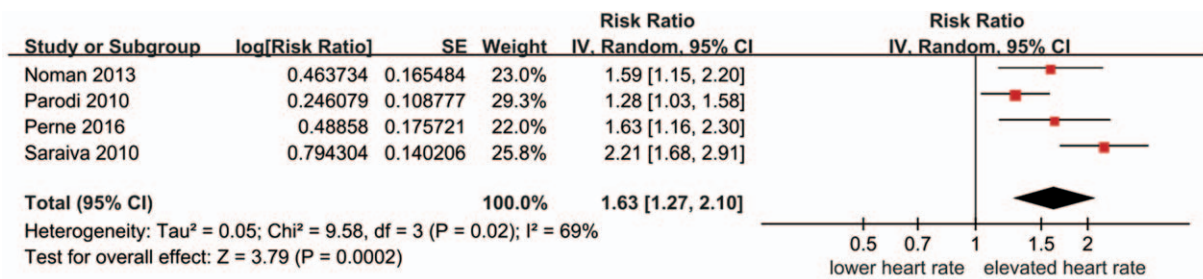


Figure 3. Relationship between the admission heart rate and long-term mortality.

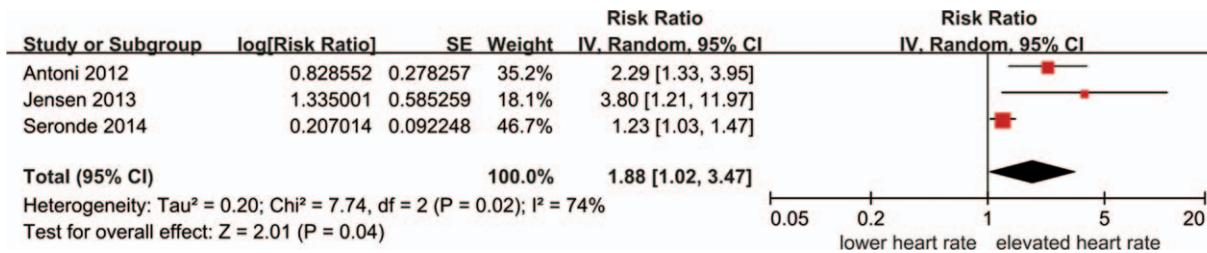


Figure 4. Relationship between discharge heart rate and long-term mortality.

3.2.5. Heterogeneity among included studies. Unfortunately, due to the differences in the definitions of elevated or lower HR, duration of follow-up, and the small number of events of some studies, we could not explore the sources of heterogeneity with subgroup analysis or meta-regression according to our prespecified procedures.

3.2.6. Publication bias and funnel plots. Owing to the small number of included studies about the influence of heart rate on mortality of patients with ACS in the era of PCI, with a maximum of 5 studies investigating admission heart rate and all-cause in-hospital mortality, the graphical or statistical assessment of publication bias was not sensitive. The funnel plots showed each comparison outcomes (Fig. 6A-D).

3.3. Sensitivity analyses

To analyze sensitivity, the primary results were not influenced by omitting 1 study except the resting heart rate and long-term mortality (Fig. 7A-C).

4. Discussion

In this systemic review and meta-analysis including 11 studies in the era of PCI and >150,000 ACS patients, we demonstrated elevated HR is associated with a statistically significant increased risk of all-cause death of patients with ACS, in despite of admission, discharge or resting HR.

HR is increasingly been recognized as a modifiable risk factor for cardiovascular disease. In the contemporary practice, the PCI is the mainly revascularization strategies for coronary heart diseases, especially for the ACS patients. However, the prognostic significance of HR in a contemporary population undergoing PCI for ACS has not been systemically reviewed. Our systematic review and meta-analysis is the first to include 3 categories of heart rate together, admission, discharge, and resting HR, respectively.

For the sake of quantitative analysis, the relationship between heart rate and mortality of ACS patients, the HR was arbitrarily divided 2 parts, elevated or lower HR. The elevated admission heart rate was the predictor of ACS mortality in-hospital and long-term follow-up (pooled RR 2.04, 95% CI 1.80-2.30;

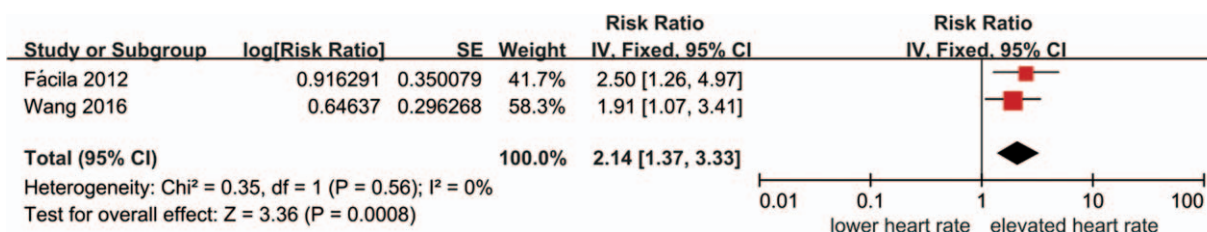


Figure 5. Relationship between resting heart rate and long-term mortality or MACE.

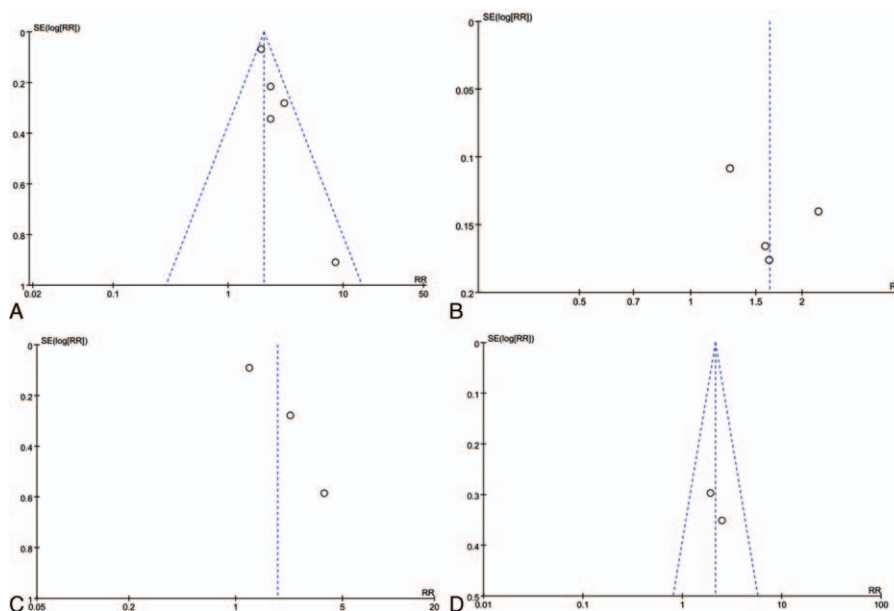


Figure 6. (A) The funnel plots of admission heart rate and in-hospital mortality. (B) The funnel plots of admission heart rate and long-term mortality. (C) The funnel plots of discharge heart rate and long-term mortality. (D) The funnel plots of resting heart rate and long-term mortality or MACE.

pooled RR=1.63, 95% CI 1.27–2.10, respectively). Similarly, the discharge and resting heart rate also increased the mortality of ACS patients (pooled RR 1.88, 95% CI 1.02–3.47; pooled RR 2.14, 95% CI 1.37–3.33, respectively).

In the systemic review, 3 studies^[6,13,15] showed the J-shaped relationship between heart rate and mortality of patients with ACS. Bangalore et al^[13] has been evaluated that the relationship between admission heart rate and mortality followed a “J-shaped” curve, <50 bpm or >130 bpm as increased

mortality compared with 60 to 69 bpm. As suggested by J-shaped relationship, we should paid attention to the extreme conditions when explaining the lower or elevated heart rate.

A meta-regression of randomized clinical trials^[19] has verified quantitative relationship between resting heart rate reduction and magnitude of clinical benefits in post-myocardial infarction. A statistically significant relationship was found between resting HR reduction and the clinical benefit including reduction in cardiac death, all-cause death, sudden death, and non-fatal

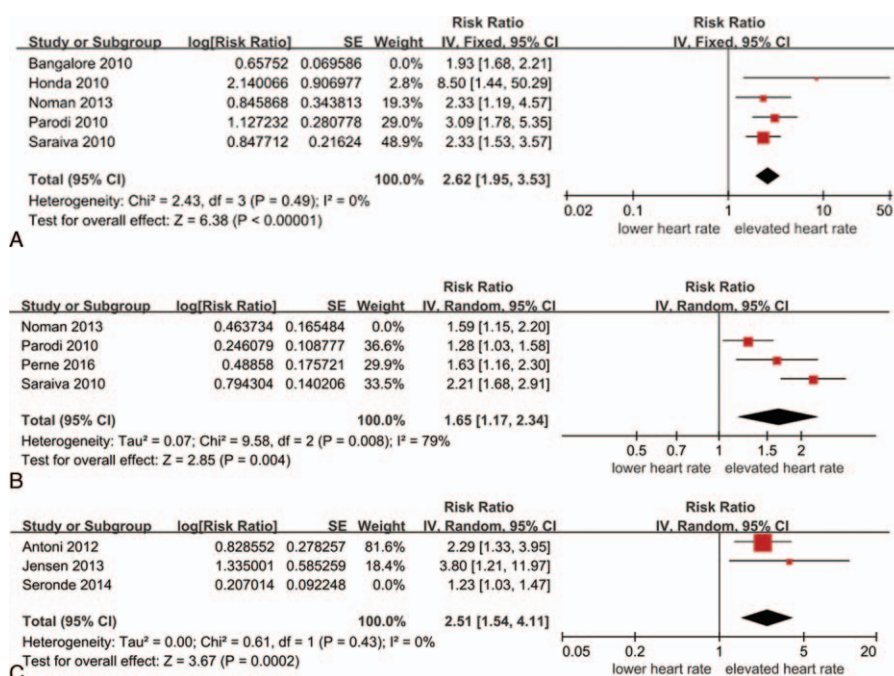


Figure 7. (A) The relationship between admission heart rate and in-hospital mortality by omitting 1 study. (B) The relationship between admission heart rate and long-term mortality by omitting 1 study. (C) The relationship between discharge heart rate and long-term mortality by omitting 1 study.

myocardial infarction recurrence. Each 10 bpm reduction in the HR is estimated to reduce the relative risk of cardiac death by 30%. This meta-analysis indirectly showed the hazard of elevated HR for myocardial infarction patients. However, the included studies were all pre-PCI era.

The pathophysiological mechanism of HR-related mortality is still elusive. It has been demonstrated that in patients with CAD, elevated HR produces coronary vasoconstriction, potentially further impairing oxygen supply.^[20] Other study^[21] has shown that an elevated HR might influence the atherosclerotic coronary disease progression and plaque stability. Inevitably, HR is regarded as a phenomenon, as it derives from the depolarization rate of the sinoatrial node that in its turn largely derives from the activity of the autonomic nervous system. Thus, HR is directly related to sympathetic activity or autonomic imbalance. It is unknown whether heart rate mediates the deleterious effects of sympathetic hyperactivity or contribute per se to patient outcome.^[15]

The optimal admission, discharge, and resting HR were unable to be given for clinical practice because there was not consistent definition of elevated or lower HR in the included studies. However, most of the included studies have regarded >70 to 80 bpm as the elevated HR.^[2,3,8,15-18] Therefore, >70 to 80 bpm should be identified as the risk factor for mortality of ACS patients.

5. Study limitations

The present study must be interpreted within the context of its potential limitations. First, heterogeneity: There was significant heterogeneity among the included studies for the analysis relationship between admission or discharge HR and long-term mortality. However, as a result of the limited number of included studies for each outcome, we could not identify the sources of heterogeneity. Second, the included studies have not the same criteria for elevated or lower HR, which may have substantial detrimental on the explanation of the pooled results. Thus, the optimal HR for clinical practice on ACS patients cannot be given. Third, although revascularization strategy of 5 studies was total PCI, yet strategy in some included studies were not totally PCI, which may also influence the pooled results on the behalf of PCI era.

6. Conclusion

Our systematic review reveals that elevated admission, discharge, and resting HR may increase the mortality of ACS patients in the PCI era. As J-shaped relationship existed, the extreme conditions should be paid attention when explaining the lower or elevated heart rate. Because there are not identical definition of elevated or lower HR, there need large cohort studies to confirm optimal heart rate for clinical practice in the future.

References

[1] Diaz A, Bourassa MG, Guertin MC, et al. Long-term prognostic value of resting heart rate in patients with suspected or proven coronary artery disease. *Eur Heart J* 2005;26:967-74.

[2] Noman A, Balasubramaniam K, Das R, et al. Admission heart rate predicts mortality following primary percutaneous coronary intervention for ST-elevation myocardial infarction: an observational study. *Cardiovasc Ther* 2013;31:363-9.

[3] Wang SL, Wang CL, Wang PL, et al. Resting heart rate associates with one-year risk of major adverse cardiovascular events in patients with acute coronary syndrome after percutaneous coronary intervention. *Exp Biol Med* (Maywood) 2016;241:478-84.

[4] Kolloch R, Legler UF, Champion A, et al. Impact of resting heart rate on outcomes in hypertensive patients with coronary artery disease: findings from the INternational VErapamil-SR/trandolapril STudy (INVEST). *Eur Heart J* 2008;29:1327-34.

[5] Jensen MT, Kaiser C, Sandsten KE, et al. Heart rate at discharge and long-term prognosis following percutaneous coronary intervention in stable and acute coronary syndromes—results from the BASKET PROVE trial. *Int J Cardiol* 2013;168:3802-6.

[6] Perne A, Schmidt FP, Hochadel M, et al. Admission heart rate in relation to presentation and prognosis in patients with acute myocardial infarction: Treatment regimens in German chest pain units. *Herz* 2016;41:233-40.

[7] Kovar D, Cannon CP, Bentley JH, et al. Does initial and delayed heart rate predict mortality in patients with acute coronary syndromes? *Clin Cardiol* 2004;27:80-6.

[8] Antoni ML, Boden H, Delgado V, et al. Relationship between discharge heart rate and mortality in patients after acute myocardial infarction treated with primary percutaneous coronary intervention. *Eur Heart J* 2012;33:96-102.

[9] Boersma E, Pieper KS, Steyerberg EW, et al. Predictors of outcome in patients with acute coronary syndromes without persistent ST-segment elevation. Results from an international trial of 9461 patients. The PURSUIT Investigators. *Circulation* 2000;101:2557-67.

[10] Granger CB, Goldberg RJ, Dabbous O, et al. Predictors of hospital mortality in the global registry of acute coronary events. *Arch Intern Med* 2003;163:2345-53.

[11] Liberati A, Altman DG, Tetzlaff J, et al. The PRISMA statement for reporting systematic reviews and meta-analyses of studies that evaluate health care interventions: explanation and elaboration. *Ann Intern Med* 2009;151:W65-94.

[12] Higgins JP, Thompson SG, Deeks JJ, et al. Measuring inconsistency in meta-analyses. *BMJ* 2003;327:557-60.

[13] Bangalore S, Messerli FH, Ou FS, et al. The association of admission heart rate and in-hospital cardiovascular events in patients with non-ST-segment elevation acute coronary syndromes: results from 135 164 patients in the CRUSADE quality improvement initiative. *Eur Heart J* 2010;31:552-60.

[14] Honda T, Kanazawa H, Koga H, et al. Heart rate on admission is an independent risk factor for poor cardiac function and in-hospital death after acute myocardial infarction. *J Cardiol* 2010;56:197-203.

[15] Parodi G, Bellandi B, Valenti R, et al. Heart rate as an independent prognostic risk factor in patients with acute myocardial infarction undergoing primary percutaneous coronary intervention. *Atherosclerosis* 2010;211:255-9.

[16] Saraiva F, Antonio N, Lourenco C, et al. Heart rate and prognosis in acute coronary syndromes. *Rev Port Cardiol* 2010;29:1101-19.

[17] Seronde MF, Geha R, Puymirat E, et al. Discharge heart rate and mortality after acute myocardial infarction. *Am J Med* 2014;127:954-62.

[18] Facila L, Morillas P, Quiles J, et al. Prognostic significance of heart rate in hospitalized patients presenting with myocardial infarction. *World J Cardiol* 2012;4:15-9.

[19] Cucherat M. Quantitative relationship between resting heart rate reduction and magnitude of clinical benefits in post-myocardial infarction: a meta-regression of randomized clinical trials. *Eur Heart J* 2007;28:3012-9.

[20] Sambuceti G, Marzilli M, Marraccini P, et al. Coronary vasoconstriction during myocardial ischemia induced by rises in metabolic demand in patients with coronary artery disease. *Circulation* 1997;95:2652-9.

[21] Heidland UE, Strauer BE. Left ventricular muscle mass and elevated heart rate are associated with coronary plaque disruption. *Circulation* 2001;104:1477-82.