



HHS Public Access

Author manuscript

Phys Chem Chem Phys. Author manuscript; available in PMC 2017 November 30.

Published in final edited form as:

Phys Chem Chem Phys. 2016 November 30; 18(47): 32358–32368. doi:10.1039/c6cp05680f.

Multiple binding modes of ibuprofen in human serum albumin identified by absolute binding free energy calculations

Stefania Evoli^{1, #}, David L. Mobley², Rita Guzzi^{1, 3}, and Bruno Rizzuti^{4, *}

¹Department of Physics, University of Calabria, 87036 Rende, Italy

²Departments of Pharmaceutical Sciences and Chemistry, University of California, Irvine, United States of America

³CNISM Unit, University of Calabria, 87036 Rende, Italy

⁴CNR-NANOTEC, Licryl-UOS Cosenza and CEMIF.Cal, Department of Physics, University of Calabria, 87036 Rende, Italy

Abstract

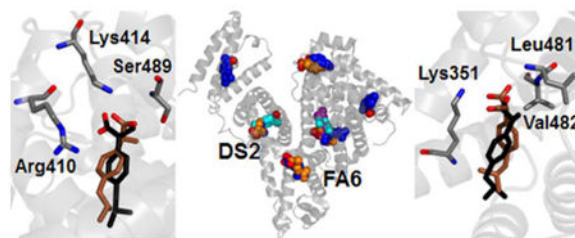
Human serum albumin possesses multiple binding sites and transports a wide range of ligands that include the anti-inflammatory drug ibuprofen. A complete map of the binding sites of ibuprofen in albumin is difficult to obtain in traditional experiments, because of the structural adaptability of this protein in accommodating small ligands. In this work, we provide a set of predictions covering the geometry, affinity of binding and protonation state for the pharmaceutically most active form (S- isomer) of ibuprofen to albumin, by using absolute binding free energy calculations in combination with classical molecular dynamics (MD) simulations and molecular docking. The most favorable binding modes correctly reproduce several experimentally identified binding locations, which include the two Sudlow's drug sites (DS2 and DS1) and the fatty acid binding sites 6 and 2 (FA6 and FA2). Previously unknown details of the binding conformations were revealed for some of them, and formerly undetected binding modes were found in other protein sites. The calculated binding affinities exhibit trends which seem to agree with the available experimental data, and drastically degrade when the ligand is modeled in a protonated (neutral) state, indicating that ibuprofen associates with albumin preferentially in its charged form. These findings provide a detailed description of the binding of ibuprofen, help to explain a wide range of results reported in the literature in the last decades, and demonstrate the possibility of using simulation methods to predict ligand binding to albumin.

Graphical abstract

Alchemical free energy methods can identify favored binding modes of a ligand within a large protein with multiple binding sites

*Corresponding author: Bruno Rizzuti, CNR-NANOTEC, Licryl-UOS Cosenza and CEMIF.Cal, Department of Physics, University of Calabria, 87036 Rende, Italy. Tel: + 39 0984 496078, bruno.rizzuti@cnr.it.

#Current address: KAUST Catalysis Center, King Abdullah University of Science and Technology, Jeddah, Saudi Arabia



Keywords

Human serum albumin; ibuprofen; binding modes; absolute binding free energy; molecular dynamics

1. Introduction

Human serum albumin is the most abundant protein in blood plasma, where it acts as a carrier of non-esterified fatty acids and several other endogenous and exogenous compounds, including a large variety of pharmaceuticals and active metabolites.¹

Albumin is monomeric (585 amino acid residues, 66 kDa), with a predominantly α -helical secondary content and a heart-shaped tertiary conformation.² The protein structure encompasses three homologous domains (I-III), each divided in two sub-domains (A-B) connected through random coils. Long-chain fatty acids, as well as many other different ligands, attach to albumin in seven binding pockets with corresponding names FA1 through FA7.³ Site FA7 can enlarge to accommodate ligands bulkier than fatty acids, extending towards site FA2 to form Sudlow's drug site 1,⁴ or DS1. Similarly, the two sites FA3 and FA4 can rearrange into a single and larger drug site, DS2. Other binding sites for complex heterocyclic drugs have also been detected or proposed.^{5,6} Some smaller ligands can additionally bind along the protein cleft in between domains IB-III A, or in an extension of site FA2 completely included in domain IA, called site FA2' when occupied by lauric or myristic acid.³ Overall, the binding features of albumin are due to such a multiplicity of available binding pockets, combined with its intrinsic structural plasticity in accommodating several types of compounds.

Ibuprofen is a non-steroidal drug (Fig. 1) used for its anti-inflammatory effects, which has long been considered as stereotypical ligand for site DS2.⁴ It is almost insoluble in water, and in ordinary therapeutic quantity is 99% bound and carried in blood plasma through proteins,⁷ mostly by human serum albumin. The carboxyl group of ibuprofen has $pK_a \approx 4.4$,⁸ thus it is expected to be deprotonated ($-\text{COO}^-$) under physiological conditions (pH of blood is 7.40 ± 0.05). However, within the core of a protein matrix the pH may easily differ by up to three units compared to the surrounding solvent.⁹ Thus, ibuprofen might be complexed with albumin in either or both neutral or charged states, and the assumption that it binds only in deprotonated form needs to be verified. In addition, due to the presence of a chiral center involving the central carbon atom in the propionic acid moiety (see Fig. 1), ibuprofen has two enantiomers. In commercial formulations, the drug is commonly available in a racemic mixture of both isomers. However, only S-ibuprofen is pharmacologically

active, as demonstrated in both *in vitro* and *in vivo* studies.^{10,11} Furthermore, the R– isomer largely interconverts into S–ibuprofen as a result of metabolism.¹¹

Ibuprofen shows a very high affinity for albumin, with measured binding constants up to $2 \cdot 10^6 \text{ M}^{-1}$,^{12,13} and primarily binds in site DS2, as demonstrated by competition for binding with the marker ligand diazepam.¹⁴ The crystallographic structure of the molecular complex of albumin with S–ibuprofen¹⁵ confirmed this binding location and demonstrated the presence of a secondary site corresponding to FA6. The ligand is assumed to be deprotonated in both cases, although no direct evidence is available because hydrogen atoms are not resolved in the crystal. Ibuprofen was also found to bind with lower affinity in the DS1 site, but the observed electron density was too weak to define the conformation and orientation of a binding pose.¹⁵ Another weak binding location has been proposed in site FA2,¹⁶ but the exact anchoring geometry and protonation of ibuprofen is unknown also in this case. Several other spectroscopic techniques suggested the presence of possible, additional secondary sites in unidentified locations: the estimate of the binding parameters of ibuprofen to albumin by equilibrium dialysis¹⁴ required a total of 6 sites to fit the experimental data, whereas up to 10 binding modes were suggested in other cases.^{17,18}

Molecular dynamics (MD) simulations have already been used in several works to elucidate details of the binding location, conformation and affinity of ligands associated with human serum albumin.^{19–22} Alchemical free energy methods are currently emerging as one of the most powerful tools to study the binding of drugs to host proteins^{23–29} but (to the best of our knowledge) have not been applied so far to a large protein with multiple binding sites, such as albumin. This is partly because, among alchemical calculations, relative free energy calculations are not suitable for predicting binding sites or comparing binding of the same ligand in multiple sites, and absolute free energy calculations have not yet seen much mainstream usage. In this work, by using a combination of molecular docking, conventional MD simulations and absolute alchemical free energy calculations, we report predicted bound geometries, protonation state and affinity for the binding of the pharmaceutically active form of ibuprofen (S–ibuprofen) to human serum albumin. The results are in excellent agreement with previous experimental observations, appear to exclude the possibility that ibuprofen binds the protein in neutral form, and uncover several previously undetected binding modes, ultimately demonstrating that simulation techniques can reveal significant details of the binding properties of albumin.

2. Computational methods

2.1 Molecular modeling and docking

The structure of unliganded albumin was obtained from the complex crystallized in the presence of two ibuprofen molecules,¹⁵ deposited as 2BXG entry in the Protein Data Bank. The position of seven missing residues at the two protein backbone termini, as well as missing atoms in solvent-exposed side chains of some other residues, was reconstructed *in silico* by using VMD.³⁰

Molecular docking of S–ibuprofen to albumin was carried out through AutoDock Vina.³¹ The graphical interface AutoDock Tools 1.5.6³² was preliminarily used to add polar

hydrogen atoms to the protein, determine the allowed torsions for the ligand, and define the coordinates for the search space (the resulting structure files and the configuration used for running the docking calculations are given as Electronic Supplementary Information material).

The docking procedure consisted of 12 independent runs, each determining the best 20 docking conformations ranked according to their binding affinity. The search space included the entire protein volume in an unbiased way. The resulting 240 poses were reduced to 38 through a clustering procedure based on distances, that included binding modes with a RMSD (Root Mean Square Deviation) of atomic positions $< 2.5 \text{ \AA}$ in each cluster.

2.2 Molecular dynamics simulations

MD simulations were performed for albumin complexed with a single ibuprofen molecule, either neutral or charged, placed in each of the 38 binding modes previously selected, for a total of 76 runs. The simulation package GROMACS 4.6.3³³ was used in combination with the AMBER 99SB-ILDN force field for the protein³⁴ and GAFF for the ligand.³⁵ The topologies for ibuprofen was built by using AmberTools 13³⁶ and atomic charges were assigned by using the AM1-BCC method,³⁷ as implemented in the Antechamber module.

Protein residues were adapted to mimic a physiological pH, with positively charged Arg/Lys side chains and N-terminus, and negatively charged Asp/Glu side chains and C-terminus. The complex was placed in a rhombic dodecahedron box with a minimum distance of 1 nm to the nearest box edge, and surrounded with ~ 32000 water molecules described by the TIP3P water model.³⁸ The overall charge of the system was neutralized by adding 15 Na^+ counterions in simulations with neutral ibuprofen, and 16 for the charged form (the topology of the protein-ligand complex is given as Electronic Supplementary Information). Periodic boundary conditions were applied to avoid edge effects. The energy of the system was minimized by using a steepest descendent method for 1500 steps.

Initial velocities were obtained from a Maxwell-Boltzmann distribution at 300 K, and the system was equilibrated for 10 ps at constant volume and temperature. Production runs were carried out for 5 ns in the NPT ensemble, using a Berendsen barostat with a time constant 0.5 ps to control the pressure³⁹ and a Langevin thermostat with inverse friction coefficient 0.1 ps. The electrostatic interactions were treated with the Particle-Mesh Ewald (PME) method,^{40,41} with 1.2 nm cut-off between direct and reciprocal space summation, and 6th order spline interpolation with a grid spacing of 0.1 nm. The van der Waals interactions were modeled with a switched Lennard-Jones potential cut-off at 1 nm, with long range dispersion corrections applied for both energy and pressure. Bond distances involving hydrogen atoms were constrained with the P-LINCS algorithm⁴² and an integration time step of 2 fs was used.

2.3 Clustering and selection of binding modes

Binding modes of ibuprofen that were stable during the MD simulations were selected on the basis of their position and predicted binding and/or interaction energy. To this aim, the configurations of the complex in the individual MD trajectories previously obtained were grouped, and a Perron-Cluster Cluster Analysis (PCCA) was performed.⁴³ The subspace of

clustering included the whole protein volume, and the selection criteria were as previously described.⁴⁴ This resulted in 74 and 82 binding modes for charged and neutral ibuprofen, respectively. This number was further reduced by a filtering process consisting of several different metrics and manual inspection. We retained up to four binding modes for each site, and these were selected through a preliminary free energy estimation based on the Zwanzig relationship⁴⁵ (as previously described by Rocklin et al.,⁵² this can be helpful in highlighting candidate binding modes that are likely to be significantly populated when a more accurate free energy calculation is done) and the docking scores assigned by AutoDock Vina.³¹ This process resulted in us retaining 18 and 13 binding modes for charged and neutral ibuprofen, respectively (the structure of these complexes are given as Electronic Supplementary Information).

2.4 Absolute binding free energy calculations

A thermodynamic cycle⁴⁶⁻⁴⁸ including four steps was constructed to estimate the binding affinity of ibuprofen, G , in each of the binding modes selected. A total of six restraints (one for the distance, two for bond angles and three for dihedral torsions) were used to confine ibuprofen in the binding location,⁴⁶ and the free energy difference G_{res} between a restrained and unrestrained MD run was calculated. Subsequently, ibuprofen was decoupled from the system by conducting a series of separate simulations at varying values of coupling parameter λ , ranging from 0 (full interactions) to 1 (no interactions). Coulombic interactions were decoupled first, followed by non-electrostatic ones, with softcore potentials used for Lennard-Jones interactions only (for details and a full list of all the values of λ used, see the input files given in the Electronic Supplementary Information). This resulted in 24 simulations carried out for 1 ns each in the presence of restraints, after which the overall G_{site} term was evaluated by using MBAR.^{49,50} The energetic contribution due to the presence of the restraints, G_{unres} , was calculated analytically.⁴⁶ The free energy of hydration of ibuprofen, G_{water} , was obtained by turning on again both electrostatic and non-electrostatic interactions in the presence of only solvent, in a simulation carried out for 5 ns at each λ value.

Both protonation states of ibuprofen complexed with albumin were of interest in the calculation of binding free energies. Ibuprofen ought to be deprotonated in solution because of its relatively low pK_a (see Fig. 1), therefore for the charged state we considered the same protonation state of the ligand in solution and in the binding site. For the case of binding of neutral ibuprofen, we computed the binding free energy of taking the protonated form from solution to the binding site via the normal thermodynamic cycle, and included the additional free energy cost of taking ibuprofen from its charged form to the neutral form in solution. This additional term, which we called G_{prot} is zero for charged ibuprofen and equal to $-G_{deprot} = 2.303 RT \ln (pH - pK_a) = 3.6$ kcal/mol for neutral ibuprofen.

Finally, the binding free energy of ibuprofen for each binding mode was obtained by summing all the above contributions:

$$\Delta G = -\Delta G_{res} - \Delta G_{site} + \Delta G_{unres} + \Delta G_{water} + \Delta G_{prot} \quad (1)$$

Random errors are independent for each single term of this summation, therefore the uncertainty on G for each binding mode was calculated as the root square of the square-sum of the uncertainty of the individual contributions. In particular, uncertainties for the G_{site} term were the standard error in the calculated binding free energy, as evaluated in the alchemical analysis performed through the use of MBAR after subsampling at intervals of the autocorrelation time.^{49,50}

The accuracy of the calculated free energy values depends on both adequate sampling and reliability of the force field.⁵⁰ For a host-ligand complex involving a relatively large protein such as albumin, a careful sampling of the relevant conformational states is a computational challenge, and the ability of the force field to model interactions in buried binding sites (where the ligand is well screened from the solvent) is a further cause for concern. In fact, the absence of an explicit polarizability term in classical ‘effective’ force fields reduces the dielectric response within the protein matrix and increases the strength of electrostatic interactions.⁵¹⁻⁵² Although this effect is difficult to estimate, and might require a reparameterization of atomic partial charges to be adequately addressed, in the following we will provide some suggestions on where it could play a role in our system. The calculated binding free energies could be further influenced by finite-size effects due to the relatively small extent of the simulation box, in combination with the use of periodic boundary conditions and lattice-sum treatment of the electrostatic interactions.⁵³⁻⁵⁵ We note that this could affect the values obtained for charged ibuprofen, but has no influence on the neutral form and it is essentially independent of the binding modes examined.

3. Results

3.1 Docking predictions include a variety of possible binding sites

Initial exploration for potential binding locations of ibuprofen complexed to human serum albumin was carried out by using molecular docking. A systematic search was performed that included the whole volume for the protein, and both protonation forms for the ligand. Due to its relatively small size, ibuprofen could bind in several different internal pockets of albumin. A total of 240 binding modes were obtained, scattered in 8 different binding sites, as reported in Table 1. Two of these positions correspond to the drug sites DS1 and DS2. Other four positions are the fatty acid binding sites FA1, FA2, FA5 and FA6. The two remaining sites are in the upper and lower region of the protein cleft (hereafter abbreviated as site PC_{up} and PC_{down}, respectively). Site PC_{up} partly overlaps with FA8, which is a binding location that can be occupied by capric acid but cannot fit fatty acids with a longer chain,^{2,3} whereas PC_{down} does not correspond to any known crystallographic location for ligands bound to albumin.

The two crystallographic binding sites DS2 and FA6 showed two of the most favorable docking score, -7.5 and -7.0 kcal/mol, respectively. This finding is not surprising and should not be overemphasized, because in both cases ibuprofen re-docked in the binding cavity left empty upon separation of the ligand from the crystallographic complex.¹⁵ The other poses showed docking scores ranging from -7.0 to -6.0 kcal/mol, the two extreme values being found for ibuprofen bound in the lower and upper region of the protein cleft, respectively. Overall, the docking scores predicted on the basis of molecular docking

calculations spanned an interval of only 1.5 kcal/mol, which is a difference too small to be reconciled with the variability in the ibuprofen affinity found in the experiment;¹⁷ furthermore, differences in the interaction energies between charged and neutral ibuprofen were exceedingly low, about 0.3 kcal/mol. These variations were of the same order of the typical uncertainties in scores provided in general by the docking technique and of the differences observed in repeating our simulation runs (about 0.1–0.3 kcal/mol in both cases).

The number of docking poses were reduced by identifying clusters of analogous binding modes differing from each other by less than 2.5 Å in the RMSD of their position. This procedure resulted in a total of 38 binding modes being selected. The number of binding modes found in each site was highly variable, ranging from 1 to 11. This quantity does not appear to be directly correlated with the volume of each protein site nor, seemingly, with other features of these cavities. The highest variety of binding modes was found for sites DS1 and FA6, suggesting that these protein pockets may accommodate ibuprofen in a multitude of different conformations.

3.2 MD simulations identify highly populated ligand conformations

Molecular docking is useful to identify potential binding locations, but it does not take into account the protein dynamics, which can crucially contribute to accommodate the ligand in the anchoring sites. To consider this effect, MD runs of 5 ns were carried out for the albumin-ibuprofen complex, with the drug placed in each of the 38 candidate binding modes identified by docking. Every simulation was performed with both charged or neutral ibuprofen, initially placed in the same starting position in either form, to investigate directly the consequences due to the sole difference in the protonation state. At the end of the simulations, a PCCA cluster analysis was performed⁴³ to select the most populated ligand conformations. This procedure resulted in 74 and 82 binding modes being identified for charged and neutral ibuprofen, respectively. Details of the distribution of the binding modes in the various protein sites are reported in Table 2.

The number of conformations was further reduced on the basis of their binding affinity, and considering a maximum number of four binding modes for each protein site. This final selection provided a total of 31 binding modes of ibuprofen, including 18 and 13 in charged and neutral form, respectively. The exact locations and conformation of the binding modes selected after the MD simulations were generally different compared to those obtained by molecular docking, although they were distributed in the same protein regions. Compared to the results previously obtained, the only possibility immediately ruled out was for ibuprofen in neutral form to associate in the upper cleft (i.e., site PC_{up}) of albumin, which molecular docking had already predicted to be the least favorable region (see Table 1).

The distribution of all the possible binding modes within albumin is summarized in Fig. 2. While our process did not design for this, the resulting candidate binding modes cover all the possible ligand positions found in crystallography for any human serum albumin-ligand complex,⁵⁶ which currently encompass 38 distinct structures deposited in the Protein Data Bank. These positions also include the possibility that ibuprofen in charged form binds in site PC_{up}, which is experimentally confirmed as a binding location only for capric acid, thyroxine and iodipamide.^{3,15} In addition, a possible binding site of neutral and charged

ibuprofen was considered in the lower region of the protein cleft (i.e., site PC_{down}); this does not correspond to a crystallographic location for any ligand bound to albumin, and lies roughly at the edge of site DS1. At this stage, though, all of these candidate binding modes are still considered very preliminary as they result from docking followed by relaxation via molecular dynamics.

3.3 Binding free energies of ibuprofen span a large range of values

The predicted binding free energy of ibuprofen in each of the binding modes, determined by using alchemical free energy computations, are summarized in Table 3. A cut-off of -1.4 kcal/mol (corresponding to an association constant $K_a < 10 \text{ M}^{-1}$) was considered the minimum favorable energy necessary for considering a binding location to be at least a weak affinity site for ibuprofen. In 13 cases the predicted binding free energy showed values below this threshold: 4 cases for charged ibuprofen and 9 for the ligand in neutral form. These occurrences also include all the binding modes for charged ibuprofen in site PC_{up}, allowing us to entirely exclude the upper region of the protein cleft as a possible binding location for ibuprofen.

The free energy values observed are compatible with the existence of a variety of possible binding locations, which will be described (in the next two paragraphs, 3.4 and 3.5) starting with the comparison of the simulated binding modes with crystallographic data available for the albumin-ibuprofen complex (paragraph 3.4), and later analyzing the predictions obtained for the other binding sites (paragraph 3.5). Furthermore, it is clear that ibuprofen in charged form shows a much greater affinity for albumin compared to its neutral form.

Overstabilization of charge-charge interactions due to inadequacies of the force field may contribute to some extent both to increase the range in the calculated values and yield overly favorable binding free energies. In addition, box-size effects could also influence the binding free energy values obtained for ibuprofen in charged form,⁵³ without modifying the relative ranking obtained for the different binding sites.

On the other hand, from a structural molecular point of view, this finding suggests that interactions between the carboxylate group of ibuprofen and positively charged (or polar) protein residues contribute significantly to determine the binding affinity. Thus, we will first analyze results observed for charged ibuprofen, and we will consider only later for comparison (in paragraph 3.6) those obtained for the neutral form. Finally, when considered separately, the ranking order in terms of affinity determined for the binding locations of charged and neutral ibuprofen are similar: site DS2 shows the highest affinity values, and less favorable binding free energies are found for some other secondary sites. This observation constitutes an additional evidence of the reliability of our alchemical free energy methodology in reproducing experimental binding locations.

3.4 Simulations of charged ibuprofen reproduce the crystallographic poses

The site DS2 is the most favorable binding location for ibuprofen both in the experiment and in simulation (see Table 3). For ibuprofen in its charged form, two binding modes were found with similar orientation and with binding free energies -18.0 ± 0.6 and -13.8 ± 0.4 kcal/mol, and a third one with opposite orientation and a smaller binding free energy, -11.2

± 0.2 kcal/mol. As shown in Fig. 3, in the two binding modes of ibuprofen showing the best affinities the carboxylate group is an acceptor of hydrogen bond (HB) for both O γ -Ser489 (donor-acceptor distance 0.26 ± 0.01 nm) and N ξ -Lys414 (0.31 ± 0.01 nm). The close proximity in their locations and large difference (4.2 kcal/mol) in binding free energies both suggest that the most favorable binding mode should be drastically more populated. However, the underlying clustering procedure of the MD trajectories indicated that both binding modes (Fig. 3a and 3b) were significantly populated conformations representative of actual anchoring geometries, revealing that the range of calculated binding affinities is possibly overestimated.

Both these binding modes are very close to the location of ibuprofen detected in crystallography (represented in black in Fig. 3). One difference is that in the X-ray structure of the complex the strongest HB is formed with the hydroxyl group of Tyr411; another minor difference is that the carboxylate group of ibuprofen forms a HB with the side chain of Arg410, whereas interaction with this residue in simulation is electrostatically very favorable but does not involve the formation of a stable HB. Ibuprofen can bind within site DS2 also in an opposite orientation (Fig. 3c) compared to the crystallographic one. In this case, it can form three HBs: one with N-Gly431 (donor-acceptor distance 0.26 ± 0.01 nm) and the other two with N-Lys432 (with a distance from the two carboxylate oxygens of 0.32 ± 0.01 and 0.34 ± 0.01 nm).

The site FA6 is the only other binding location solved in crystallography for ibuprofen in albumin. The binding free energy calculated in simulation for the two binding modes is -10.4 ± 0.4 and -9.3 ± 0.3 kcal/mol (see Table 3), thus affinity is lower than for site DS2, but still in the nanomolar range. As shown in Fig. 4, both binding modes are very similar to the one detected in crystallography. The carboxylate group of ibuprofen interacts closely with the charged side chain of Lys351 and forms HBs with the two amine nitrogen atoms of Leu481 and Val482. For the favorite binding mode, donor-acceptor distance is, respectively, 0.29 ± 0.01 and 0.30 ± 0.01 nm for the two HB.

3.5 Several additional binding sites are predicted for ibuprofen

The simulation results show that site DS1 is the second most favorable binding site for charged ibuprofen interacting with albumin. The binding conformations obtained in simulation are shown in Fig. 5. Two binding modes were detected with highly favorable energies, -15.4 ± 0.3 and -12.2 ± 0.3 kcal/mol, and other two with lower affinity, -7.2 ± 0.3 and -6.3 ± 0.4 kcal/mol (see Table 3). Ibuprofen forms HBs with N ξ -Lys199, N η -Arg218 and N η -Arg222, with an average donor-acceptor distance of 0.28 ± 0.01 nm in the first two cases and 0.31 ± 0.01 nm in the third one; exceptions are the second most favorable binding mode (Fig. 5b), which does not form a HB with N η -Arg222 but it does with N ξ -Lys195 (with distance 0.31 ± 0.01 nm), and the third most favorable binding mode (Fig. 5c), which does not form a HB with Arg218. Therefore, although the two binding modes with the most favorable free energies should be significantly preferred, overall ibuprofen in charged form shows a variety of possibilities to interact with albumin in site DS1. A direct comparison with crystallography is not possible because an accurate experimental position of the binding

pose was not reported, although indications were found of the presence of the ligand in this site.¹⁵

The binding affinity of site FA2 is -10.2 ± 0.4 kcal/mol (see Table 3) and is comparable with the one of site FA6, in agreement with the indications of experiments,⁷ although only the latter has been detected in crystallography. As shown in Fig. 6, ibuprofen in site FA2 forms a HB with the side chain of Arg10, with a donor-acceptor distance of 0.32 ± 0.02 nm. The other three possible binding sites investigated (FA1, FA5 and PC_{down}) show low affinity values, indicating that they have lower specificity for ibuprofen and could be occupied only when all the other locations are already saturated. In particular, binding free energy site for site PC_{down} is very low, indicating that this site has low specificity for ibuprofen.

3.6 Ibuprofen binds albumin only in charged form, not neutral

The binding of ibuprofen in neutral form to albumin may appear to have a significant affinity in absolute terms, because the values obtained in simulation extend up to -5.5 kcal/mol for site DS2 (see Table 3), i.e. to micromolar affinity. Nevertheless, binding free energy values in every binding location are systematically more favorable for ibuprofen in charged form compared to the neutral one, even when the best binding geometry found for the two protonation states is almost identical. This evidence seems to exclude the possibility that ibuprofen binds significantly to albumin in neutral form.

An example is shown in Fig. 7, where the binding mode with the most favorable free energy for neutral ibuprofen in site DS2 is reported. This binding mode is close to the one observed in crystallography (in black in Fig. 7), and similar to the one already found for charged ibuprofen (see Fig. 3), which has however a binding free energy predicted to be more favorable by 12.5 kcal/mol (see Table 3). The difference in the affinity between the two protonation states of ibuprofen is essentially due to electrostatic interactions that are missing in the neutral state. Other contributions, such as the possibility for neutral ibuprofen to form a HB between its unprotonated O atom and N^ε-Lys414 (see Fig. 7), only play a minor role. The same is observed also for binding modes in other protein sites, which have less favorable interactions with the protein due to the absence of significant electrostatic contributions, and show only low affinities values. In particular, for site PC_{down} the calculated value of binding affinity is particularly unfavorable, ruling out this location as a binding site for ibuprofen in any form of protonation.

It is interesting to note that the minimum difference in binding free energy between the two protonation states of ibuprofen in the same binding location is found for sites FA6, which is a shallow trench on the protein surface, thus relatively open and accessible to the solvent. In contrast, binding free energy differences between charged and neutral form of ibuprofen are very large for both Sudlow's drug sites, which are secluded inner cavities and are predominantly apolar, except for the additional presence of either two patches of basic and polar residues (site DS1) or a single polar patch (DS2). This observation supports the idea that there may be an inadequate environmental polarization in the most solvent-sheltered protein regions that would have an impact on the calculated interaction energies, systematically affecting the values obtained for charged ibuprofen over those relative to the neutral form.

4. Discussion

Mapping the exact location and binding affinity of ligands to human serum albumin is remarkably important in pharmacology, because it contributes to determine the adsorption of currently administered drugs and could help in the design new active compounds. This task is difficult, both from a theoretical and experimental point of view, for a number of reasons. The most important one is that albumin possesses several inner pockets, variously accessible to different ligands:¹⁵ e.g., seven sites for long-chain fatty acids, five for thyroxine, etc. In addition, multiple binding modes can sometimes be found in a single binding site; e.g., stearic acid can bind in two configurations with opposite direction in site FA2.³ Some compounds are also titratable, and their binding free energy is affected by their protonation state.

Ibuprofen is an important molecule from a pharmaceutical point of view, and it can be considered a model ligand for a systematic *in silico* investigation of the binding properties of albumin. In fact, several experimental techniques suggest that ibuprofen has multiple binding locations,¹⁴ and some of them can possibly be occupied in more than a single binding mode. Furthermore, the protonation state of this ligand may be either charged or neutral, although the former state is more likely to occur at physiological pH. Both protonation forms were simulated and the results were compared.

Our investigation on the possible binding locations and affinity for ibuprofen complexed to albumin has relied on a combination of simulation methods. Molecular docking was used as an ancillary technique for a first screening of the protein surface, in search for binding cavities to be (potentially) occupied by ibuprofen. The positions determined included all of the binding pockets already known in crystallography for ligands bound to albumin,⁵⁶ plus a supplementary location in the lower region of the central protein cleft. The binding modes obtained were subsequently refined through MD simulations that allowed the protein to accommodate the ligand. This procedure let ibuprofen adapt its position and sample the most populated and energetically favorable conformations, and alchemical free energy calculations were finally used to evaluate the binding free energies in these positions.

Several arguments strongly suggest that our predicted binding modes may provide a realistic molecular picture. First, the most favorable binding modes reproduce very accurately the position found in crystallography for ibuprofen bound to human serum albumin.¹⁵ Second, the ranking of the binding free energies calculated in the different positions is in excellent agreement with the indications of experiments.⁷ Third, simulation of ibuprofen in neutral form does not alter significantly such ranking, and yet the binding affinity drastically reduces compared to the charged state, ruling out the possibility that the ligand is protonated within the protein matrix – as it was reasonable to expect. Finally, although no additional binding site compared to the ones known for other ligands was found for ibuprofen within albumin, a multiplicity of possible binding locations and modes were found in simulation, suggesting an immediate rationale to explain some previously discordant experimental observations on the exact number of such locations and their respective affinity.^{13,14,18}

A direct comparison between the affinity values found in simulation and the experimental ones is not straightforward. For instance, experiments are often performed under restricted conditions, e.g. with albumin solved in a buffer or immobilized on a substrate. For this reason, estimates of the binding constants of ibuprofen to albumin may be at variance even in different ‘wet lab’ experiments,¹⁴ and it is not surprising that simulation results obtained under ideal, unperturbed conditions may further differ. Conversely, computational methods are also not immune from systematic errors that may affect the correct estimate of the binding free energy. As an example, discrepancies up to 4.5 kcal/mol with the experiment were reported in the affinity of fatty acids calculated by using molecular mechanics Poisson–Boltzmann surface area (MM-PBSA), one of the most accurate method applied to estimate ligand binding to human serum albumin to date.¹⁹

In our case, typical unavoidable difficulties associated with MD simulations, such as intrinsic limits in both sampling and force field, might affect the quantitative estimates of the determined free energy values. We note that finite-size effects⁵³ may influence the results obtained for charged ibuprofen, without affecting those for the neutral form. However, these effects are essentially independent of the specific binding location, thus would not alter the overall ranking of the preferred binding sites. Therefore, we point out to an excess in the stabilization of charge-charge interactions as the possible predominant source of error in our calculations, in close similarity with work on cytochrome *c* peroxidase.^{51,52} Although not easy to prove in the practice, this hypothesis would explain in a rather straightforward way three systematic effects that are evident in our data: (i) overly favorable binding free energies, particularly for (but not limited to) charged ibuprofen; (ii) large variations in the calculated values across all the possible binding sites for the charged ligand form; and, (iii) differences between binding energies of protonated versus deprotonated ibuprofen in the same binding site are much greater for the most internal and apolar binding pockets (i.e., site DS1 and DS2), where the solvent cannot provide adequate screening of electrostatic interactions.

These effects are particularly evident for site DS2, which is the most favorable binding location found for ibuprofen – in agreement with experiment. For comparison, binding free energies varying in the range between –8.6 and –6.9 kcal/mol for S–ibuprofen in the highest affinity site of albumin were previously reported in experiments performed with several techniques, which included ultrafiltration after *in vivo* administration of ³H-labeled ibuprofen,¹⁰ microcalorimetry,⁵⁷ circular dichroism,⁵⁸ and high-performance liquid chromatography (HPLC) either by equilibrium dialysis,¹² or on an immobilized albumin column,⁵⁹ or using a chiral fluorescent derivatizing reagent.¹³

The second most favorable binding site found in simulation is DS1, and shows several possible binding modes that may contribute to explain a number of puzzling experimental observations. In fact, ibuprofen was reported¹⁴ to be indifferent to the presence of warfarin and prone to an anti-cooperative behavior towards phenylbutazone, both typical marker ligands of site DS1. In contrast, warfarin is displaced from this site in haem-bound albumin under excess of ibuprofen, after the latter has saturated its primary site DS2;⁶⁰ the same effect was observed for unliganded albumin after sequential addition of ochratoxin A and ibuprofen.⁶¹ A strong interference was also found in the concurrent association of quercetin,

which is likely to bind primarily in site DS1.⁶² These competitive behaviors were explained by assuming that ibuprofen binds preferentially to albumin in site DS2, with DS1 available as a secondary site. Nevertheless, Hage and coworkers⁵⁹ reported the presence of two high affinity sites with similar binding free energy for S-ibuprofen bound to albumin. Their experiment were performed on immobilized albumin, and this rationale is usually given to account for differences with other studies.¹³ However, a number of high affinity sites in between 1 and 2 was observed to be necessary to fit experimental observations for both ibuprofen isomers also by Rahman and coworkers.¹² Thus, DS1 may be more appropriately described as a versatile high-affinity binding site for ibuprofen, as our simulation results readily suggest.

The multiplicity of possible binding modes in site DS1 would also explain why the exact position of ibuprofen in this site is poorly solved in the crystallographic complex¹⁵ compared with site FA6, although the latter is found only as a secondary site both in other spectroscopic experiments¹⁶ and in our free energy calculations. The higher adaptability of site DS1 in lodging ibuprofen compared to DS2 might also justify why only the former shows high affinity for the (biologically less relevant) R- isomer,⁵⁹ although this hypothesis should be further tested.

Other binding locations, with comparatively less favorable affinity, were found in simulation in sites FA6 and FA2. Site FA6 has two binding modes, with most the favorable one showing a binding geometry in close agreement with crystallographic data.¹⁵ In contrast, site FA2 has a single binding mode and was not found in X-ray experiments, but it was already reported as an experimental binding location for ibuprofen;¹⁶ in this case, the results of our MD simulations allow us to predict details of the binding geometry that were formerly unknown. Finally, sites FA1 and FA5 are low affinity binding locations that could constitute secondary association sites at sufficiently high concentrations of ibuprofen, and even the central cleft of albumin (site PC_{down}) may bind ibuprofen under opportune conditions, although with very low affinity.

The existence of multiple binding sites for ibuprofen was already hypothesized⁶² to explain the increase of fluorescence quenching in flavonoids/albumin complexes taking place upon addition of relatively high concentrations (ibuprofen/albumin molar ratio > 4). Up to 6–10 binding modes were also necessary in former studies to explain some experimental data.^{14,17,18} Such an assortment of possibilities may be relevant *in vivo* because, although at typical therapeutic concentrations ($\sim 5 \cdot 10^{-5}$ M, or 10 mg/L) the molar ratio ibuprofen/albumin is about 0.1,¹³ other endogenous and exogenous ligands compete at the same time to occupy the binding sites of the protein. In particular, bulkier drugs generally have no other possibilities than binding in Sudlow's DS1 and DS2 sites. Thus, the variety of binding possibilities found in our simulations reveal the versatility and promiscuity of albumin in forming a complex with a multiplicity of ligands, which is one of the major keys in determining the importance of this transport protein in the blood.

5. Conclusion

The binding of ibuprofen to human serum albumin is important from a pharmacological point of view, and constitutes a relevant test case to assess the general ability of MD simulations to reproduce experimental findings and predict binding locations in this essential plasmatic protein. Alchemical free energy calculations were found to accurately model both the geometry and the binding affinity of ibuprofen in the various protein binding sites. The simulation results explain several findings obtained by using different spectroscopic techniques, and make testable predictions that will help to complete an accurate description of the binding sites of human serum albumin. The simulation methods here described could also be immediately extended to investigate the binding of other endogenous and exogenous molecules to albumin, or to other drug-binding proteins with an equally complex structural architecture and dynamical behavior. More ambitiously, this work may constitute a starting point for more advanced simulations, to investigate interactions among competing ligands with the same host macromolecule, or to unravel the role of allosteric regulation in the binding of small molecules to transport proteins.

Supplementary Material

Refer to Web version on PubMed Central for supplementary material.

Acknowledgments

DLM appreciates financial support from the National Institutes of Health (1R01GM108889-01).

References

1. Fasano M, Curry S, Terreno E, Galliano M, Fanali G, Narciso P, Notari S, Ascenzi P. *IUBMB Life*. 2005; 57:787–796. [PubMed: 16393781]
2. Curry S, Mandelkow H, Brick P, Franks N. *Nat Struct Biol*. 1998; 5:827–835. [PubMed: 9731778]
3. Bhattacharya AA, Grune T, Curry S. *Journal of Molecular Biology*. 2000; 303:721–732. [PubMed: 11061971]
4. Sudlow G, Birkett DJ, Wade DN. *Mol Pharmacol*. 1975; 11:824–832. [PubMed: 1207674]
5. Wang ZM, Ho JX, Ruble JR, Rose J, Ruker F, Ellenburg M, Murphy R, Click J, Soistman E, Wilkerson L, Carter DC. *BBA-Gen Subjects*. 2013; 1830:5356–5374.
6. Handing KB, Shabalin IG, Szlachta K, Majorek KA, Minor W. *Mol Immunol*. 2016; 71:143–151. [PubMed: 26896718]
7. Fanali G, di Masi A, Trezza V, Marino M, Fasano M, Ascenzi P. *Mol Aspects Med*. 2012; 33:209–290. [PubMed: 22230555]
8. Babic S, Horvat AJM, Pavlovic DM, Kastelan-Macan M. *TRAC-Trends Anal Chem*. 2007; 26:1043–1061.
9. Onufriev AV, Alexov E. *Q Rev Biophys*. 2013; 46:181–209. [PubMed: 23889892]
10. Paliwal JK, Smith DE, Cox SR, Berardi RR, Dunnkucharski VA, Elta GH. *J Pharmacokinet Biopharm*. 1993; 21:145–161. [PubMed: 8229677]
11. Cheng HY, Rogers JD, Demetriades JL, Holland SD, Seibold JR, Depuy E. *Pharmaceut Res*. 1994; 11:824–830.
12. Rahman MH, Maruyama T, Okada T, Imai T, Otagiri M. *Biochem Pharmacol*. 1993; 46:1733–1740. [PubMed: 8250958]
13. Itoh T, Saura Y, Tsuda Y, Yamada H. *Chirality*. 1997; 9:643–649. [PubMed: 9366025]
14. Kosa T, Maruyama T, Otagiri M. *Pharmaceut Res*. 1997; 14:1607–1612.

15. Ghuman J, Zunszain PA, Petitpas I, Bhattacharya AA, Otagiri M, Curry S. *J Mol Biol.* 2005; 353:38–52. [PubMed: 16169013]
16. di Masi A, Gullotta F, Bolli A, Fanali G, Fasano M, Ascenzi P. *FEBS J.* 2011; 278:654–662. [PubMed: 21205199]
17. Whitlam JB, Crooks MJ, Brown KF, Pedersen PV. *Biochem Pharmacol.* 1979; 28:675–678. [PubMed: 571721]
18. Montero MT, Estelrich J, Valls O. *Int J Pharm.* 1990; 62:21–25.
19. Fujiwara SI, Amisaki T. *Biophys J.* 2008; 94:95–103. [PubMed: 17827235]
20. Deeb O, Rosales-Hernandez MC, Gomez-Castro C, Garduno-Juarez R, Correa-Basurto J. *Biopolymers.* 2010; 93:161–170. [PubMed: 19785033]
21. Pantusa M, Bartucci R, Rizzuti B. *J Agr Food Chem.* 2014; 62:4384–4391. [PubMed: 24773207]
22. Rizzuti B, Bartucci R, Sportelli L, Guzzi R. *Arch Biochem Biophys.* 2015; 579:18–15. [PubMed: 26048999]
23. Chodera JD, Mobley DL, Shirts MR, Dixon RW, Branson K, Pande VS. *Curr Opin Struc Biol.* 2011; 21:150–160.
24. Christ CD, Fox T. *J Chem Inf Model.* 2014; 54:108–120. [PubMed: 24256082]
25. Gallicchio E, Levy RM. *Curr Opin Struc Biol.* 2011; 21:161–166.
26. Gumbart JC, Roux B, Chipot C. *J Chem Theory Comput.* 2013; 9:794–802. [PubMed: 23794960]
27. Michel J. *Phys Chem Chem Phys.* 2014; 16:4465–4477. [PubMed: 24469595]
28. Mobley DL, Klimovich PV. *J Chem Phys.* 2012; 137:230901-1–12. [PubMed: 23267463]
29. Wang L, Wu YJ, Deng YQ, Kim B, Pierce L, Krilov G, Lupyan D, Robinson S, Dahlgren MK, Greenwood J, Romero DL, Masse C, Knight JL, Steinbrecher T, Beuming T, Damm W, Harder E, Sherman W, Brewer M, Wester R, Murcko M, Frye L, Farid R, Lin T, Mobley DL, Jorgensen WL, Berne BJ, Friesner RA, Abel R. *J Am Chem Soc.* 2015; 137:2695–2703. [PubMed: 25625324]
30. Humphrey W, Dalke A, Schulten K. *J Mol Graph Model.* 1996; 14:33–38.
31. Trott O, Olson AJ. *J Comput Chem.* 2010; 31:455–461. [PubMed: 19499576]
32. Morris GM, Goodsell DS, Halliday RS, Huey R, Hart WE, Belew RK, Olson AJ. *J Comput Chem.* 1998; 19:1639–1662.
33. Pronk S, Pall S, Schulz R, Larsson P, Bjelkmar P, Apostolov R, Shirts MR, Smith JC, Kasson PM, van der Spoel D, Hess B, Lindahl E. *Bioinformatics.* 2013; 29:845–854. [PubMed: 23407358]
34. Lindorff-Larsen K, Piana S, Palmo K, Maragakis P, Klepeis JL, Dror RO, Shaw DE. *Proteins.* 2010; 78:1950–1958. [PubMed: 20408171]
35. Wang JM, Wolf RM, Caldwell JW, Kollman PA, Case DA. *J Comput Chem.* 2004; 25:1157–1174. [PubMed: 15116359]
36. Wang JM, Wang W, Kollman PA, Case DA. *J Mol Graph Model.* 2006; 25:247–260. [PubMed: 16458552]
37. Jakalian A, Jack DB, Bayly CI. *J Comput Chem.* 2002; 23:1623–1641. [PubMed: 12395429]
38. Jorgensen WL, Chandrasekhar J, Madura JD, Impey RW, Klein ML. *J Chem Phys.* 1983; 79:926–935.
39. Berendsen HJC, Postma JPM, Di Nola A, Haak JR. *J Chem Phys.* 1984; 81:3684–3690.
40. Darden T, York D, Pedersen L. *J Chem Phys.* 1993; 98:10089–10092.
41. Essmann U, Perera L, Berkowitz ML, Darden T, Lee H, Pedersen LG. *J Chem Phys.* 1995; 103:8577–8593.
42. Hess B. *J Chem Theory Comput.* 2008; 4:116–122. [PubMed: 26619985]
43. Deuffhard P, Weber M. *Linear Algebra Appl.* 2005; 398:161–184.
44. Zheng YC, Duan YC, Ma JL, Xu RM, Zi X, Lv WL, Wang MM, Ye XW, Zhu S, Mobley D, Zhu YY, Wang JW, Li JF, Wang ZR, Zhao W, Liu HM. *J Med Chem.* 2013; 56:8543–8560. [PubMed: 24131029]
45. Zwanzig RW. *J Chem Phys.* 1954; 22:1420–1426.
46. Boresch S, Tettinger F, Leitgeb M, Karplus M. *J Phys Chem B.* 2003; 107:9535–9551.
47. Mobley DL, Chodera JD, Dill KA. *J Chem Phys.* 2006; 125:084902-1–16. [PubMed: 16965052]

48. Mobley DL, Chodera JD, Dill KA. *J Chem Theory Comput.* 2007; 3:1231–1235. [PubMed: 18843379]
49. Shirts MR, Chodera JD. *J Chem Phys.* 2008; 129:124105-1–10. [PubMed: 19045004]
50. Klimovich PV, Shirts MR, Mobley DL. *J Comput Aid Mol Des.* 2015; 29:397–411.
51. Banba S, Brooks CL. *J Chem Phys.* 2000; 113:3423–3433.
52. Rocklin GJ, Boyce SE, Fischer M, Fish I, Mobley DL, Shoichet BK, Dill KA. *J Mol Biol.* 2013; 425:4569–4583. [PubMed: 23896298]
53. Rocklin GJ, Mobley DL, Dill KA, Hünenberger PH. *J Chem Phys.* 2013; 139:184103-1–32. [PubMed: 24320250]
54. Reif MM, Oostenbrink C. *J Comput Chem.* 2014; 35:227–243. [PubMed: 24249099]
55. Lin YL, Aleksandrov A, Simonson T, Roux B. *J Chem Theory Comput.* 2014; 10:2690–2709. [PubMed: 26586504]
56. Cuya Guizado TRC. *J Mol Model.* 2014; 20:2450-1–13. [PubMed: 25241161]
57. Cheruvallath VK, Riley CM, Narayanan SR, Lindenbaum S, Perrin JH. *Pharm Res.* 1996; 13:173–178. [PubMed: 8668670]
58. Cheruvallath VK, Riley CM, Narayanan SR, Lindenbaum S, Perrin JH. *J Pharmaceut Biomed.* 1997; 15:1719–1724.
59. Hage DS, Noctor TAG, Wainer IW. *J Chromatogr A.* 1995; 693:23–32. [PubMed: 7697161]
60. Baroni S, Mattu M, Vannini A, Cipollone R, Aime S, Ascenzi P, Fasano M. *Eur J Biochem.* 2001; 268:6214–6220. [PubMed: 11733017]
61. Il'ichev YV, Perry JL, Ruker F, Dockal M, Simon JD. *Chem-Biol Interact.* 2002; 141:275–293. [PubMed: 12385724]
62. Dufour C, Dangles O. *BBA-Gen Subjects.* 2005; 1721:164–173.

Abbreviations

DS1/DS2	Sudlow's drug site 1/2
FA1/7	fatty acid site 1/7
HB	hydrogen bond
HPLC	high-performance liquid chromatography
MD	molecular dynamics
MM-PBSA	molecular mechanics Poisson–Boltzmann surface area
PCCA	Perron-cluster cluster analysis
PC_{down}/PC_{up}	lower/upper protein cleft site
PME	Particle-Mesh Ewald
RMSD	root mean square deviation

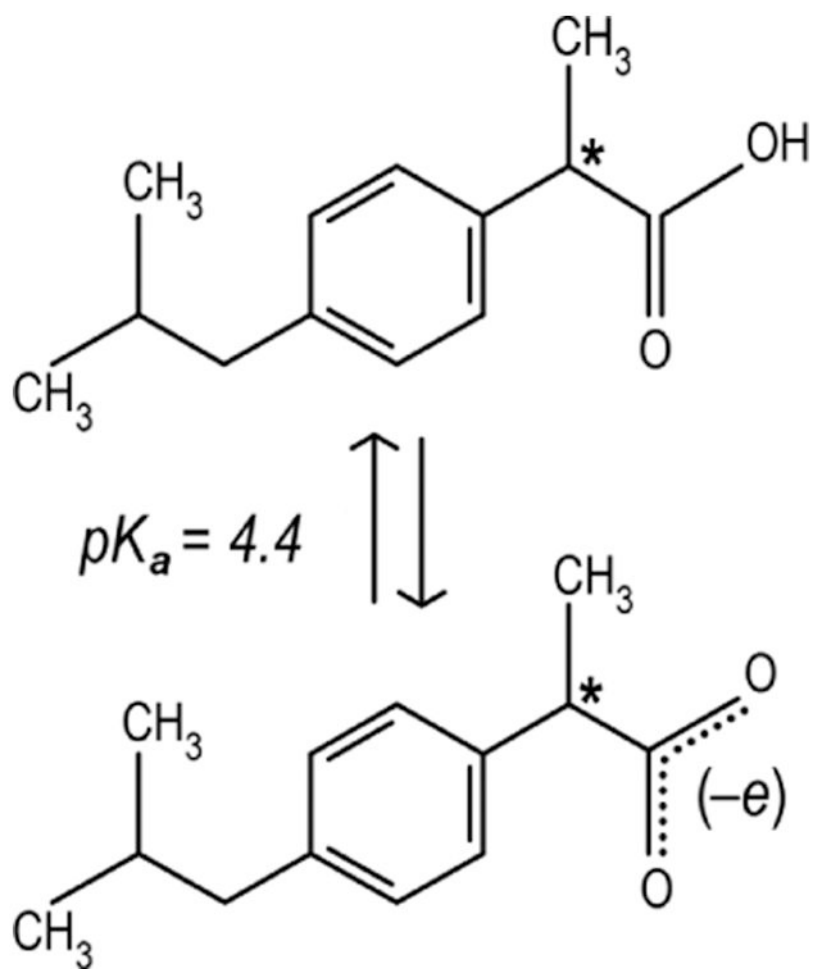


Fig. 1. Structure of ibuprofen: (top) protonated neutral, and (bottom) deprotonated charged form. Molecular mass is, respectively, 206.3 and 205.3 Da for the two forms. The only chiral C atom is indicated with an asterisk.

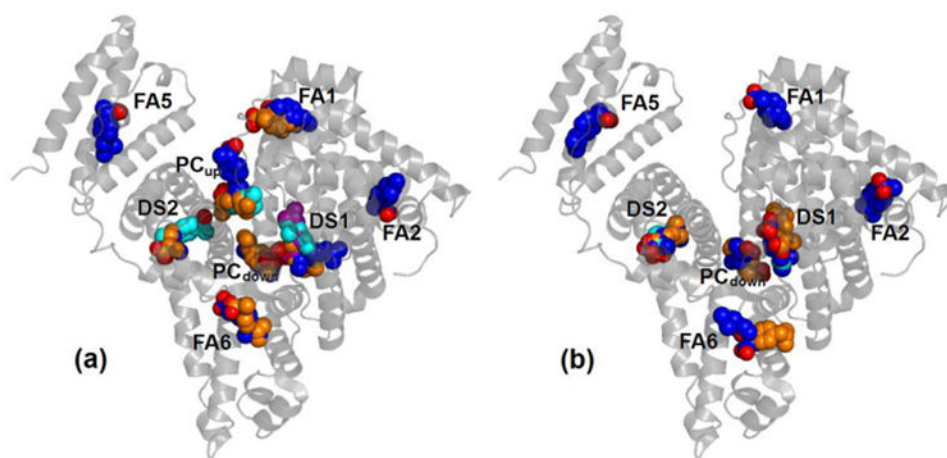


Fig. 2. Selected binding modes of ibuprofen to human serum albumin: (a) charged and (b) neutral ibuprofen. Oxygen atoms are in red for all poses, carbons are either blue, orange, cyan or purple.

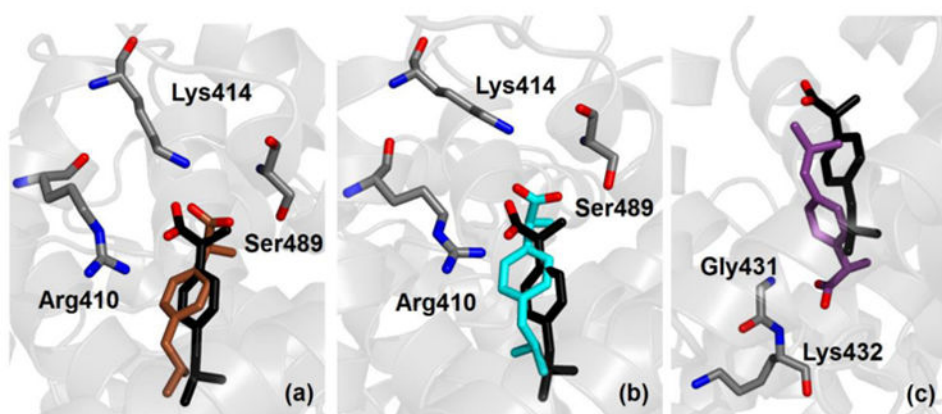


Fig. 3. Crystallographic (black) and simulated conformation (either brown, cyan or purple) of ibuprofen in charged form bound within site DS2 of albumin. Binding modes are shown according to decreasing affinity (see Table 3) from (a) to (c). Selected protein residues are also shown; only non-hydrogen atoms are displayed.

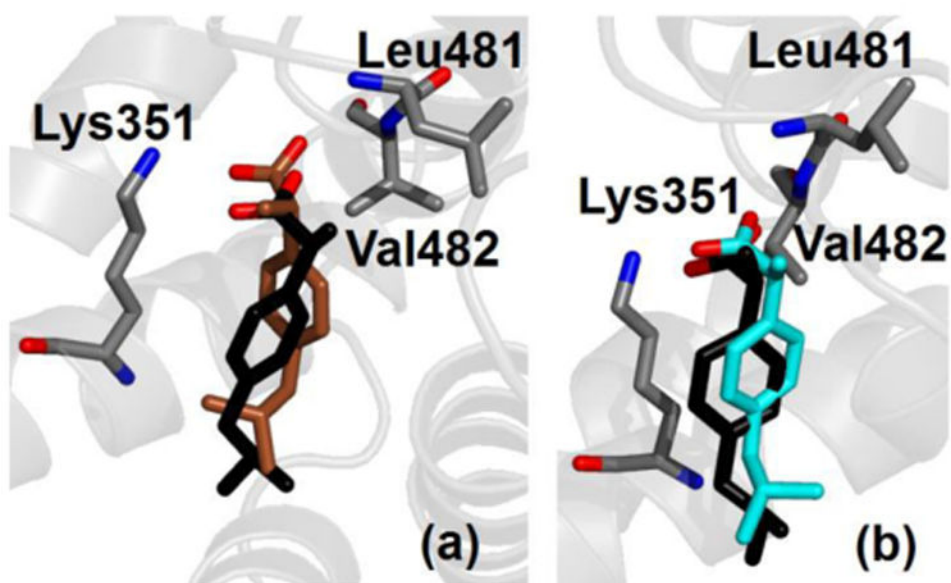


Fig. 4. Crystallographic (black) and simulated conformation (either brown or cyan) of ibuprofen in charged form bound within site FA6 of albumin. Binding modes are shown according to decreasing affinity (see Table 3) from (a) to (b). Selected protein residues are also shown; only non-hydrogen atoms are displayed.

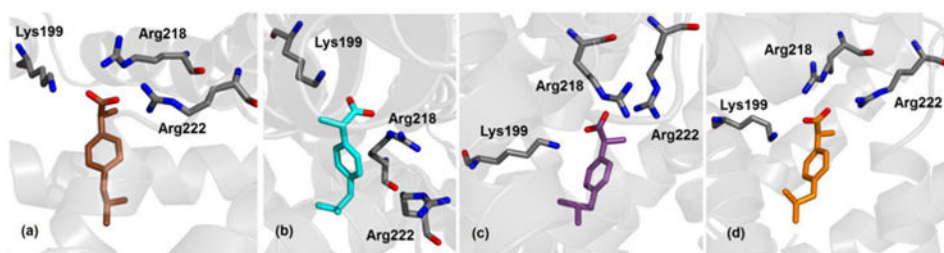


Fig. 5. Ibuprofen in charged form bound within site DS1 of albumin; binding modes are shown according to decreasing affinity (see Table 3) from (a) to (d). Selected protein residues are also shown; only non-hydrogen atoms are displayed.

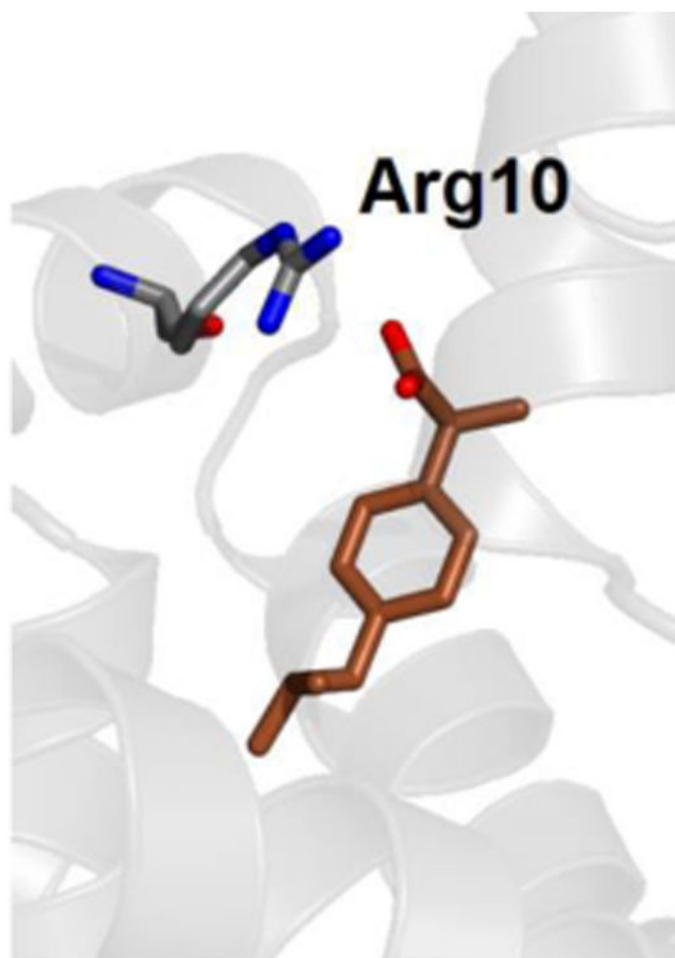


Fig. 6. Ibuprofen in charged form bound within site FA2 of albumin. The hydrogen-bonding residue Arg10 is also shown; only non-hydrogen atoms are displayed.

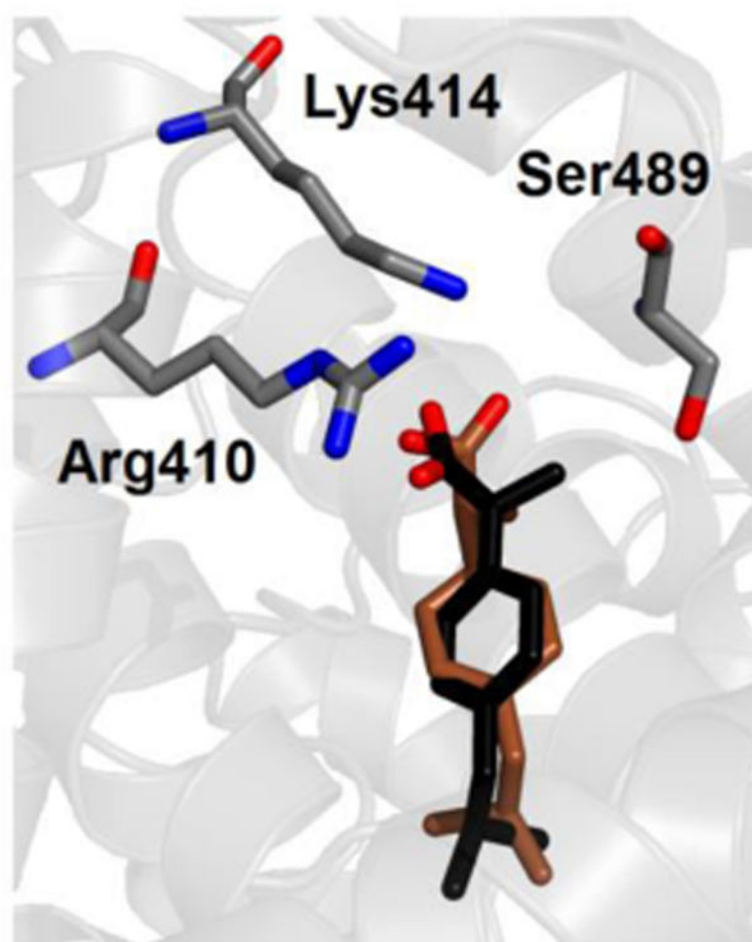


Fig. 7. Crystallographic (black) and simulated conformations of the most favorable binding mode (brown) of ibuprofen in neutral form in site DS2 of albumin. Selected protein side chains are also shown; only non-hydrogen atoms are displayed

Table 1

Most favorable docking score and number of binding modes found in molecular docking of ibuprofen to albumin. Selection from first to second stage was performed by a clustering procedure with a cutoff of 2.5 Å in the RMSD of atomic positions of ibuprofen.

Subdomain	Site	Docking score [kcal/mol]	Binding modes	
			Selection 1 st stage	Selection 2 nd stage
IA-IIA	FA2	-6.0	1	1
IB	FA1	-6.5	3	1
IIA	DS1	-6.4	64	11
IIA-IIB	FA6	-7.0	90	10
IIA-IIIA	PC _{down}	-7.1	21	6
IIIA	DS2	-7.5	42	5
IIIA-IB	PC _{up}	-6.1	7	2
IIIB	FA5	-6.5	12	2
		Total binding modes	240	38

Table 2

Number of binding modes found in MD simulation for ibuprofen, either in charged or neutral form, complexed with albumin. Selection from first to second stage was performed on the basis of coarse binding free energy estimates from the Zwanzig relationship,⁴⁵ the number of the binding modes, and the observed population of each binding mode in our simulations.

Subdomain	Site	Binding modes			
		Charged form		Neutral form	
		1 st stage	2 nd stage	1 st stage	2 nd stage
IA-IIA	FA2	1	1	1	1
IB	FA1	2	2	3	1
IIA	DS1	23	4	28	3
IIA-IIB	FA6	25	2	22	2
IIA-IIIA	PC _{down}	5	2	15	2
IIIA	DS2	11	3	8	3
IIIA-IB	PC _{up}	6	3	4	0
IIIB	FA5	1	1	1	1
		74	18	82	13

Table 3

Binding energy of ibuprofen complexed with albumin determined by using alchemical free energy calculations. Free energy values $G_b > -1.4$ kcal/mol are reported in parentheses, and values extending up to the positive range are indicated as 0.0 kcal/mol.

Site	Binding energy [kcal/mol]	
	Charged form	Neutral form
DS2	-18.0 ± 0.6	-5.5 ± 0.3
	-13.8 ± 0.4	-5.1 ± 0.2
	-11.2 ± 0.2	-3.6 ± 0.3
DS1	-15.4 ± 0.3	(0.0)
	-12.2 ± 0.3	(0.0)
	-7.2 ± 0.3	(0.0)
	-6.3 ± 0.4	(0.0)
FA6	-10.4 ± 0.4	-2.7 ± 0.3
	-9.3 ± 0.3	(0.0)
FA2	-10.2 ± 0.4	(-0.5 ± 0.2)
FA1	-6.0 ± 0.5	(0.0)
	-5.2 ± 0.4	(0.0)
FA5	-4.0 ± 0.4	(0.0)
		(0.0)
PC _{down}	-3.2 ± 0.4	(0.0)
	(-0.5 ± 0.3)	(0.0)
PC _{up}	(0.0)	
	(0.0)	-
	(0.0)	