

Oxidative stress induces transient O-GlcNAc elevation and tau dephosphorylation in SH-SY5Y cells

Emese Kátai ^a, József Pál ^{b, c}, Viktor Soma Poór ^d, Rupeena Purewal ^e, Attila Miseta ^a,
Tamás Nagy ^{a, f, *}

^a Department of Laboratory Medicine, University of Pécs, Pécs, Hungary

^b Department of Neurosurgery, University of Pécs, Pécs, Hungary

^c Neuronal Networks Group, College of Medical and Dental Sciences, University of Birmingham, Birmingham, UK

^d Department of Forensic Medicine, University of Pécs, Pécs, Hungary

^e Department of Pediatrics, West Virginia University, Morgantown, WV, USA

^f János Szentágothai Research Centre, University of Pécs, Pécs, Hungary

Received: January 27, 2016; Accepted: May 19, 2016

Abstract

O-linked β -*N*-acetylglucosamine or O-GlcNAc modification is a dynamic post-translational modification occurring on the Ser/Thr residues of many intracellular proteins. The chronic imbalance between phosphorylation and O-GlcNAc on tau protein is considered as one of the main hallmarks of Alzheimer's disease. In recent years, many studies also showed that O-GlcNAc levels can elevate upon acute stress and suggested that this might facilitate cell survival. However, many consider chronic stress, including oxidative damage as a major risk factor in the development of the disease. In this study, using the neuronal cell line SH-SY5Y we investigated the dynamic nature of O-GlcNAc after treatment with 0.5 mM H₂O₂ for 30 min. to induce oxidative stress. We found that overall O-GlcNAc quickly increased and reached peak level at around 2 hrs post-stress, then returned to baseline levels after about 24 hrs. Interestingly, we also found that tau protein phosphorylation at site S262 showed parallel, whereas at S199 and PHF1 sites showed inverse dynamic to O-Glycosylation. In conclusion, our results show that temporary elevation in O-GlcNAc modification after H₂O₂-induced oxidative stress is detectable in cells of neuronal origin. Furthermore, oxidative stress changes the dynamic balance between O-GlcNAc and phosphorylation on tau proteins.

Keywords: O-GlcNAc • oxidative stress • stress response • Alzheimer's disease • tau phosphorylation

Introduction

Cells maintain their intracellular milieu within a quite narrow range. This is a dynamic equilibrium which stabilizes the cells' internal environment in response to the alterations of external conditions. Cells exposed to any damage react with a complex mechanism called stress response which varies by the actual tolerance level of the given cell type and the duration and severity of the stress [1]. When the impairment of the cells does not cause immediate cell death (necrosis), the cells may recover and adapt to the changed environment [2]. When complete adaptation is not possible, stress response will include hypertrophy, hyperplasia, atrophy and metaplasia or activation of death signalling pathways: apoptosis, necrosis or autophagy

cell death [1, 3, 4]. Not surprisingly, dysfunctions of the adaptive mechanisms play an important role in many diseases such as ischaemia, diabetes, atherosclerosis, neurodegenerative disorders and tumours.

Stress response induces and regulates a variety of intracellular adaptive mechanisms ranging from receptor binding, signal transduction, gene transcription to protein synthesis [5]. These mechanisms contribute to the survivability of the cells by controlling cell cycle, repairing/stabilizing functional proteins, removing of damaged molecules, mobilizing stored resources and modifying metabolic pathways [3, 6, 7]. Cellular proteins are regulated in these processes at multiple levels; altered protein degradation (*e.g.* activation of caspases) or synthesis (transcriptional changes, unfolded protein response) and functional changes [8–10]. Post-translational modifications such as phosphorylation, glycosylation and acetylation also play a critical role

*Correspondence to: Tamás NAGY
E-mail: nagy.tamas@pte.hu

in these processes, as they can reversibly or irreversibly modify the structure, the stability and the function of proteins [11].

Recently, several studies indicated the involvement of a special post-translational modification in stress response: O-linked β -*N*-acetylglucosamine or O-GlcNAc modification [12, 13]. Upon O-GlcNAc modification, a single *N*-acetylglucosamine is attached to the hydroxyl group of serine or threonine moieties of cytosolic and nuclear proteins [14]. This modification is a dynamic and reversible process and was shown to impact so far more than 1000 cytoplasmic, nuclear and mitochondrial proteins such as NF-Kb, PI3-kinase, endothelial nitric oxide synthase, O-GlcNAc transferase (OGT), α -tubulin, c-myc and heat shock protein 70 [15, 16]. It plays a critical role in the regulation of signal transduction, transcriptional activity, cell-cycle regulation, protein degradation and glucose metabolism [15]. Previous studies have shown that increased O-GlcNAc has a protective role in acute stress, best characterized in cardiac cells [17]. Recent findings suggest that O-GlcNAc is also abundant in neuronal tissues [18] and it was shown that chronic imbalance between O-GlcNAc and phosphorylation on tau proteins is a major element in the pathophysiology of Alzheimer's disease [19]. Although it was shown that O-GlcNAc is dynamic and is induced by excitatory neuronal stimuli [18], the regulation of O-GlcNAc during acute stress in neuronal cells is far from completely understood.

The aim of this study was to investigate the dynamic change in O-GlcNAc in the neuronal cell line SH-SY5Y after H₂O₂-induced oxidative stress. We found that intracellular O-GlcNAc rapidly elevated after treatment with 0.5 mM H₂O₂ for 30 min., reached peak level then declined close to the basal level. Moreover, reciprocal relationship between O-GlcNAc and phosphorylation of tau protein after oxidative stress was directly demonstrated. These findings suggest that the pathophysiology of neurodegenerative diseases might be connected to cellular stress adaptation mechanisms.

Materials and methods

Cell line and culture conditions

SH-SY5Y neuroblastoma cells (ATCC CRL-2266 human neuroblastoma) were grown in a 1:1 mixture of EMEM and Ham's F12 medium supplemented with 10% foetal bovine serum (FBS), 1% non-essential amino acids, penicillin (100 U/ml) and streptomycin (100 μ g/ml). The cells were incubated at 37°C, in 95% air–5% CO₂ atmosphere in a humidified incubator. Subculturing was performed in every 2–3 days and fresh medium was replaced 12–24 hrs prior to each experiment. The experiments were performed on the cells at 80% or less confluency. Oxidative conditions were chosen based on experimental set-ups found in the literature [20, 21] and our pilot experiments (data not shown). Our aim was to decrease the viability to ~75% by the treatment. Thus, cells were treated with 0.5 mM H₂O₂ for 30 min. in serum-free medium to avoid rapid H₂O₂ degradation by antioxidants present in FBS. After the treatment, the medium was replaced by complete medium and the cells were incubated as described above for the following recovery times: 0, 30, 60 min. and 2, 4, 24, 48 and 72 hrs.

Western blot analysis

The treated cells were washed twice in ice-cold PBS buffer and harvested in RIPA buffer [10 mM Tris pH 7.2, 100 mM NaCl, 1 mM ethylenediaminetetraacetic acid (EDTA), 1 mM ethylene glycol-bis (2-aminoethylether)-*N,N,N',N'*-tetraacetic acid (EGTA), 0.1% SDS, 1% Triton-X 100, 0.5% deoxycholate, 10% glycerol, protease inhibitor cocktail: 1 tablet/10 ml (Roche Applied Science, Penzberg, Germany)], kept on ice for 30 min. and centrifuged for 10 min. at 4°C at 14,000 \times g. From the supernatant the total protein concentration was determined using Bio-Rad *Dc* Assay Kit. Proteins were separated on 7.5% SDS-PAGE and transferred onto polyvinylidene difluoride membranes (Millipore, Billerica, MA, USA). The same amount of protein of each sample was confirmed by SYPRO Ruby Protein Blot Stain (Bio-Rad, Hercules, CA, USA) on the membranes. Blots were probed with the anti-O-GlcNAc antibody CTD110.6 (monoclonal mouse IgM, 1:2000; Sigma-Aldrich, St. Louis, MO, USA) in 1% casein blocking buffer and followed with HRP conjugated goat antimouse IgM (1:5000; Thermo Fisher Scientific, Waltham, MA, USA). Blots were also probed with mouse (monoclonal) anti-tau antibody (1:250) and rabbit (polyclonal) anti-tau [Ps¹⁹⁹] phospho-specific antibody (1:1000; Thermo Fisher Scientific), rabbit (polyclonal) anti-tau [Ps²⁶²] antibody (1:1000; Abcam, Cambridge, MA, USA) and PHF1 (anti-tau Ps^{396/404}) (1:200; gift from Dr. P. Davies, Albert Einstein College of Medicine, Bronx, NY, USA) according to the manufacturer's protocol. The blots were developed using Femto chemiluminescent substrate (Thermo Fisher Scientific) and the signal was visualized by Kodak Image Station 2000R. Kodak 1D and ImageJ analysis software were used to quantify the intensity of bands.

Cell viability test

Cells were lifted by trypsin and quickly washed 2 \times in ice-cold PBS. Approximately 10⁶ cells/sample were stained with Propidium iodide and Annexin V-FITC according to the manufacturer's instruction (BD Pharmingen, Heidelberg, Germany). The fluorescence signal of Propidium-iodide dye was detected at FL3 channel (620 nm), and FITC Annexin V intensity was detected at FL1 channel (525 nm) with a Cytomic FC 500 flow cytometer (Beckman Coulter, Fullerton, CA, USA). Defining the quadrants of dead cells (positive for propidium iodide) and live cells (minimal staining for both Propidium iodide and FITC Annexin V) was performed on control samples and identical boundaries were utilized for all samples.

Intracellular ROS detection

Intracellular reactive oxygen species (ROS) levels were measured by fluorescence using CM-H2DCFDA (Thermo Fisher Scientific) fluorescence dye as a ROS probe. SH-SY5Y cells were cultured as mentioned above. Before the experiments, the cells were lifted from the flasks by 0.25% trypsin/0.5 mM EDTA/PBS then immediately washed with pre-warmed complete media to neutralize trypsin. Next, the cells were quickly washed in Hank's balanced salt solution (HBSS), and resuspended in HBSS containing 1% bovine serum albumin, 1.2 mM Ca²⁺, 1.0 mM Mg²⁺ and 2 μ M CM-H2DCFDA. Samples were incubated in the dark at room temperature for 30 min. Cell suspensions were gently mixed every 10 min. during the incubation to prevent the attachment to the vessels' wall. Following two wash steps to remove the excess of the

fluorescence dye, the cells were resuspended in HBSS. Fluorescence signal was measured at 25°C by F4500 fluorescence spectrophotometer (Hitachi High-Technologies Europe, Krefeld, Germany) at excitation wavelength of 490 nm and emission wavelength of 525 nm. Baseline level of fluorescence was recorded for ~1 min. before the addition of 0.5 mM H₂O₂ or vehicle. The relative level of ROS was expressed as F/F₀ values. Fluorescence signal was monitored for 10 min. following peroxide or vehicle treatment.

Real-time RT-PCR analysis

Total RNA was isolated from SH-SY5Y neuroblastoma cells using RNeasy Mini Kit (Qiagen, Hilden, Germany). RNA quantity was determined using a Nanodrop Implen Nanophotometer. Reverse transcription into cDNA was performed with iScript cDNA Synthesis Kit (Bio-Rad). Pre-designed TaqMan assay (Roche Applied Science) was used to determine mRNA expression levels of human OGT and glucosamine-fructose-6-phosphate aminotransferase (GFAT). As a reference gene, human porphobilinogen deaminase (PBGD) was used. Amplification primers and hydrolysis probes were designed using ProbeFinder software (www.universalprobelibrary.com). Sequences of the forward and reverse primers of OGT were 5'-AGACGATGGCACAACCTCC-3' and 5'-ATCAGCTGCTTTCCATTGC-3', the hydrolysis probe was UPL #29. Sequences of the forward and reverse primers of GFAT were 5'-TGAGATTGGTGTGGCCAGTA-3' and 5'-GGCAAA-CATCACAAGGGATAC-3', the hydrolysis probe was U PL #20. The sequences of the reference gene PBGD were as follows: sense 5'-TGCCA-GAGAAGAGTGTGGTG-3', antisense 5'-AGCCGGGTGTGAGGTTT-3', the hydrolysis probe was UPL #24. Real-time PCR was performed in a LightCycler[®] thermal cycler (Roche Applied Science). Each reaction was performed in a 20 µl volume, using the LightCycler Taqman Master Mix (Roche Applied Science). Both target and reference genes were amplified with efficiencies near 100% and within 5% of each other. For the relative gene expression analysis, the 2 $\Delta\Delta$ Ct (Livak) method was used. The expression level of the gene of interest was compared with the level of PBGD in each sample.

Immunofluorescence microscopy

Cells were grown on coverslips and after oxidative stress/recovery treatments they were washed twice in ice-cold PBS. Next, the cells were fixed in 10% PBS-buffered formaldehyde for 30 min. at room temperature, subsequently washed with PBS. To avoid formaldehyde autofluorescence, the coverslips were quenched with 50 mM ammonium chloride for 10 min. Cells were permeabilized with 0.1% Triton-X 100 for 5 min. Non-specific sites were blocked with 5% bovine serum albumin (Sigma-Aldrich) in PBS for 5 min. and then the coverslips were incubated at room temperature with CTD110.6 monoclonal antibody for 30 min. at a dilution of 1:100 in 5% BSA/PBS. After rinsing three times with PBS, the samples were incubated with Alexa Fluor 594 goat antimouse IgM secondary antibody (1:200; Thermo Fisher Scientific) for 30 min. in dark. Nuclei were counterstained with Hoechst dye at a dilution of 1:5000 for 15 min. at room temperature. Finally, coverslips were mounted with Vectashield (Vector Laboratories, Burlingame, CA, USA) mounting medium. Image acquisition was performed with a Zeiss Axiovert 35 (Carl Zeiss Microscopy GmbH, Jena, Germany) inverted fluorescent microscope with CellID (Olympus, Tokyo, Japan) software.

Data analysis

Data are presented as means \pm S.E.M. throughout. Comparisons were performed with repeated measures one-way ANOVA and statistically significant differences between groups were defined as $P < 0.05$ and are indicated in the legends of figures.

Results

Effect of treatment with 0.5 mM H₂O₂ for 30 min. on cell survival

We have used H₂O₂ to expose SH-SY5Y neuroblastoma cells to oxidative stress. Figure 1A shows that the addition of 0.5 mM H₂O₂ markedly increased the level of intracellular ROS as measured by the ROS sensitive fluorescent dye CM-H2DCFDA. To simulate acute oxidative stress and subsequent recovery, we exposed the cells to 0.5 mM H₂O₂ for 30 min. and then carefully washed out the oxidative agent from the medium to allow the cells to recover (Fig. 1B). Intracellular ROS levels were also assessed at various timepoints (1–6 hrs) after the removal of H₂O₂ from the media, but no significant difference could be found between control and H₂O₂-treated cells (data not shown). Next, the cells were incubated under normal growth conditions for up to 72 hrs. The damage caused by oxidative stress was fully apparent at 24 hrs after the treatment (the ratio of dead cells increased to 22.6 (\pm 7.3) % compared to 6.7 (\pm 2.5) % of the control). The ratio of dead cells did not increase any further (22.3 (\pm 7.1) % and 15.8 (\pm 5.0) % after 48 and 72 hrs, respectively).

Immunofluorescence microscopy reveals dynamic changes in protein O-GlcNAcylation

To assess the effect of oxidative stress induced by 30 min. treatment with 0.5 mM H₂O₂ on protein O-glycosylation, SH-SY5Y cells were formalin fixed and labelled with anti-O-GlcNAc monoclonal antibody (CTD110.6) after exposing them to conditions analogous to the cell survival experiments. Figure 2 shows control and stress-exposed cells after various recovery times. Similar to other cell types, SH-SY5Y cells showed abundant, diffuse granular cytoplasmic CTD110.6 positivity. Whereas each cell seemed to increase its overall O-GlcNAc levels upon stress, we found some very intensely labelled cells that also appeared to have more compact and round-shaped morphology. Based on Hoechst nuclear counterstaining, these cells were either mitotic cells or apoptotic cells, the latter more frequently appearing in the late post-stress phase (data not shown). Fluorescence intensity was averaged for all experimental conditions and is summarized in the bar graph shown at the right of Figure 2. Although no significant increase in intensity was observed at 2 hrs compared with control, we found significant changes within stress-exposed cells as recovery time progressed.

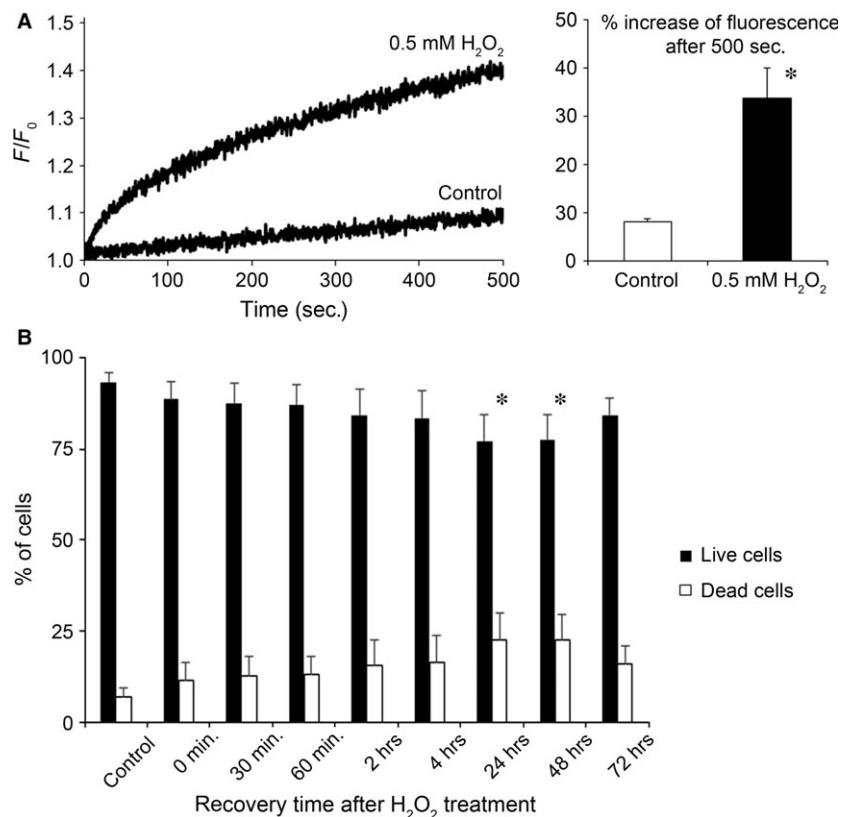


Fig. 1 Effect of moderate oxidative stress on cell viability. **(A)** Intracellular ROS levels measured by ROS sensitive fluorescent dye CM-H2DCFDA. SH-SY5Y cells were treated with either 0.5 mM H₂O₂ or vehicle (control) starting at 0 sec. and the change in fluorescence signal was recorded for 500 sec. Representative curves of relative fluorescence (F/F₀) are shown on the left, whereas the average increase in fluorescence signal 500 sec. after the start of the experiment is shown on the right. Data are means ± S.E.M. from three independent experiments. **P* < 0.05 versus control. **(B)** SH-SY5Y cells were treated with 0.5 mM H₂O₂ for 30 min. in serum-free growth medium, then the medium was replaced and cells were incubated under normal growth conditions. The indicated times refer to the recovery time after the end of H₂O₂ treatment. At those time points, cells were collected and cell viability assay was performed to measure the percentage of living cells (Annexin V and Propidium-Iodide negative) and dead cells (Propidium-Iodide positive). Data are means ± S.E.M. from eight independent experiments. **P* < 0.05 versus control.

Elevation in O-GlcNAc protein and decrease/reduce in protein phosphorylation

The dynamic changes in O-GlcNAc levels demonstrated by immunofluorescence were confirmed by immunoblots. We found that SH-SY5Y cells required about 2–4 hrs to reach peak level of O-GlcNAc following oxidative stress induced by 30 min. treatment with 0.5 mM H₂O₂. On the long run, O-GlcNAc levels returned to normal intensities after about 24–48 hrs (Fig. 3).

Many studies have shown an interaction between O-GlcNAc and other signalling mechanisms, the most documented one is the reciprocal relationship between O-GlcNAc and phosphorylation, particularly on tau proteins which play a key role in the development of Alzheimer's disease [22]. As of today, scientific consensus agrees that proper O-GlcNAcylation can prevent the hyperphosphorylation of tau proteins and subsequent formation of neurofibrillary tangles [23]. In this study, we analysed the level of tau phosphorylation (Fig. 3B) using an antibody against total tau and phosphospecific antibody

against tau [Ps¹⁹⁹], [Ps²⁶²] and PHF1. We found that the ratio of tau [Ps¹⁹⁹] and PHF1 compared with the amount of total tau protein level significantly decreased after oxidative stress induced by 30 min. treatment with 0.5 mM H₂O₂. After 24–72 hrs of recovery times, both [Ps¹⁹⁹] tau and PHF1 phosphorylation returned to baseline levels, which dynamic seems to be the opposite of the overall O-GlcNAc levels' dynamic. On the other hand, [Ps²⁶²] phosphorylation seemed to follow a parallel dynamic to O-GlcNAcylation; short-term elevation after oxidative stress followed by decreased level of phosphorylation during the recovery phase.

Real-time PCR analysis of GFAT and OGT mRNA expression in SH-SY5Y neuronal cell culture

Protein O-GlcNAc modification is regulated by OGT which is the only enzyme responsible to the addition of the *N*-acetyl-glucosamine moiety to Ser/Thr residues. However, metabolic flux through the

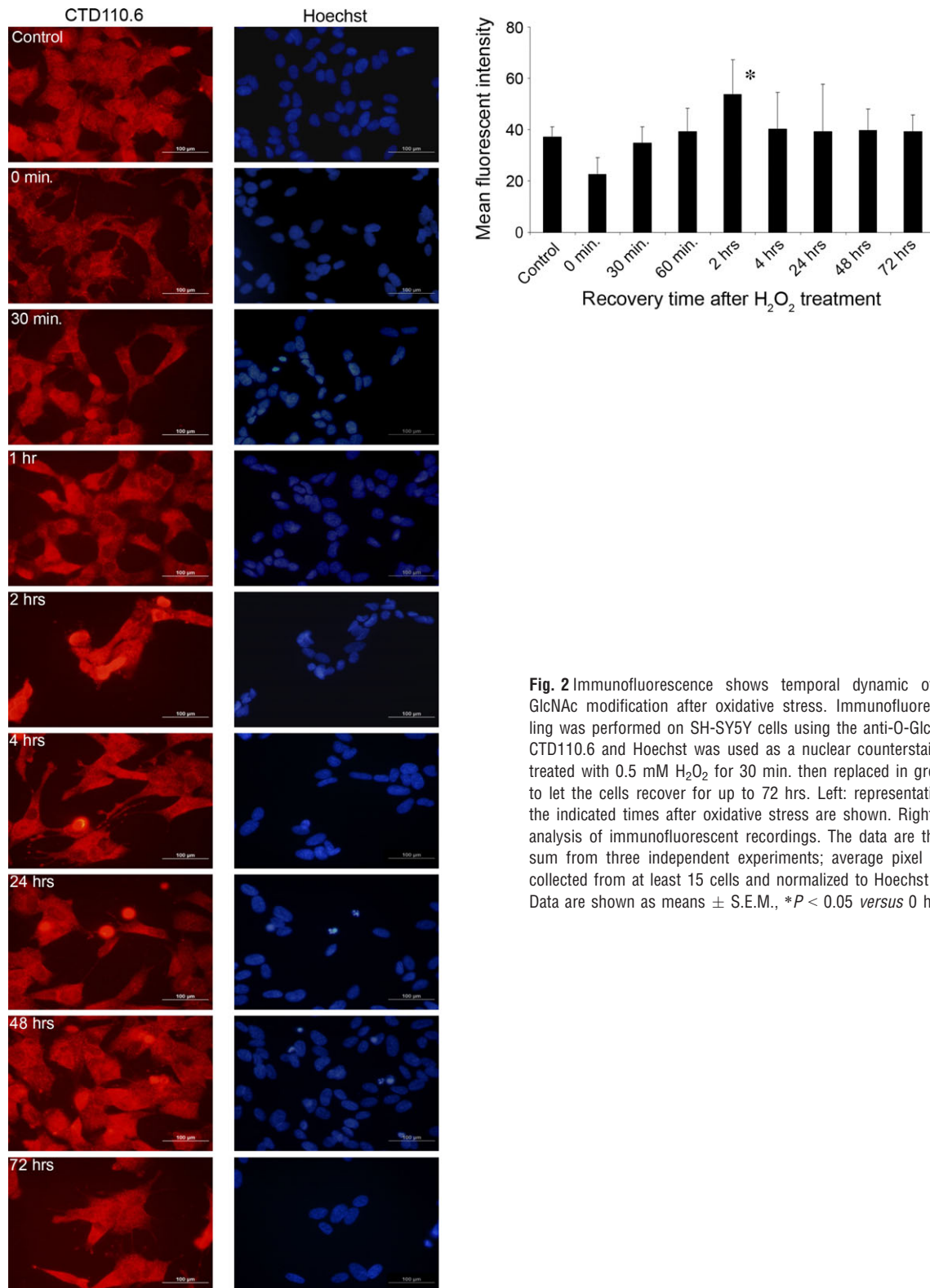


Fig. 2 Immunofluorescence shows temporal dynamic of protein O-GlcNAc modification after oxidative stress. Immunofluorescence labeling was performed on SH-SY5Y cells using the anti-O-GlcNAc antibody CTD110.6 and Hoechst was used as a nuclear counterstain. Cells were treated with 0.5 mM H₂O₂ for 30 min. then replaced in growth medium to let the cells recover for up to 72 hrs. Left: representative images at the indicated times after oxidative stress are shown. Right: quantitative analysis of immunofluorescent recordings. The data are the cumulative sum from three independent experiments; average pixel intensity was collected from at least 15 cells and normalized to Hoechst counterstain. Data are shown as means \pm S.E.M., * $P < 0.05$ versus 0 hr.

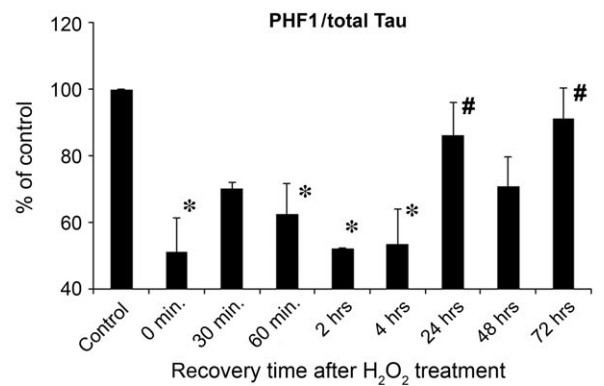
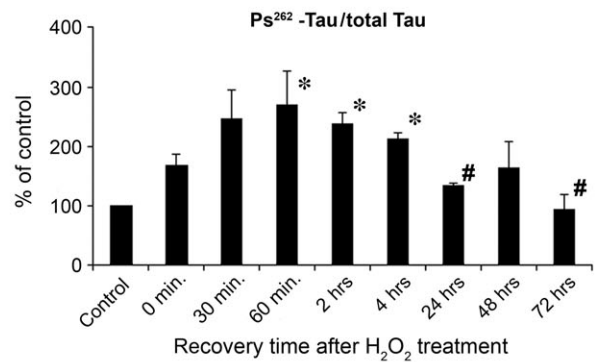
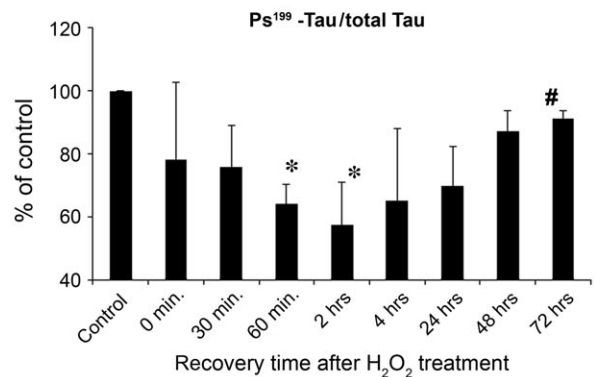
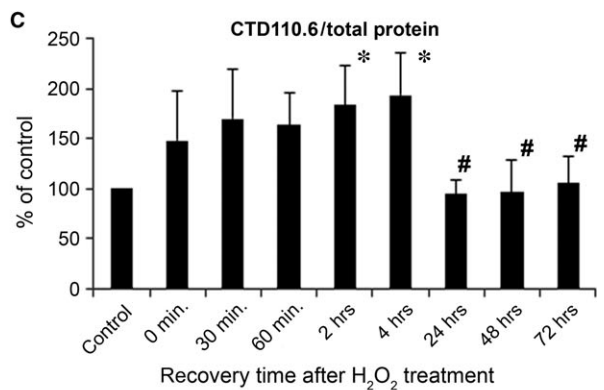
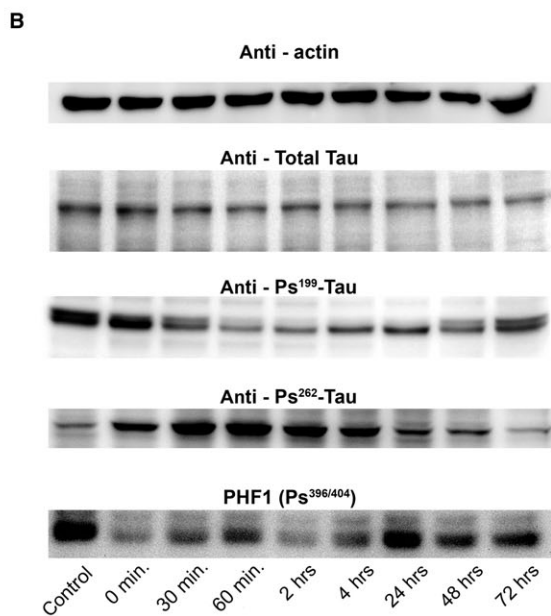
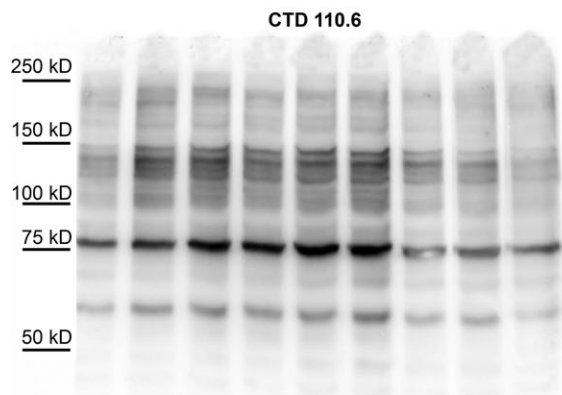
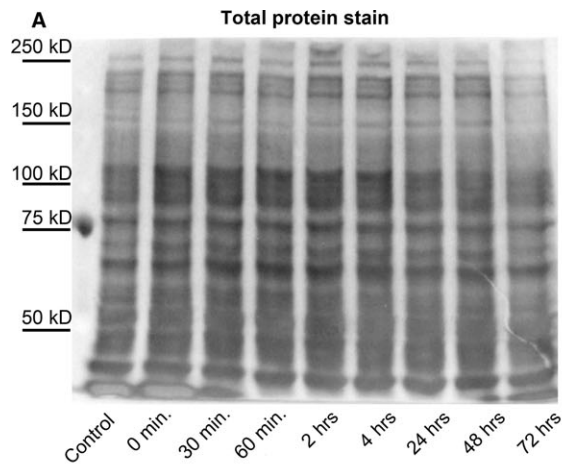


Fig. 3 Temporal dynamics of O-GlcNAc modification and tau phosphorylation after oxidative stress revealed by Western blot. **(A)** Western blot analysis using SYPRO Ruby Blot Total Protein Staining and CTD110.6 antibody and **(B)** actin, total tau, [Ps¹⁹⁹], [Ps²⁶²] and PHF1 staining shows representative samples of protein extracts from SH-SY5Y cells previously incubated for 30 min. with 0.5 mM H₂O₂ then replaced in normal growth medium to recover. **(C)** Densitometric analysis of the CTD110.6 and [Ps¹⁹⁹], [Ps²⁶²] and PHF1 staining over time. Levels are expressed as a percentage of the baseline ratio. Each data point represents the average of at least three separate experiments. Data are shown as means ± S.E.M., **P* < 0.05 versus Control, #*P* < 0.05 versus 2 hrs.

hexosamine biosynthesis pathway (HBP) also influences O-GlcNAc levels by the regulation of the availability of UDP-GlcNAc. The first, rate-limiting step of HBP is catalysed by GFAT. Therefore, we analysed the mRNA expressional levels of two key enzymes related to O-GlcNAc; GFAT (Fig. 4A) and OGT (Fig. 4B).

SH-SY5Y cells were exposed to the same oxidative stress condition and recovery periods as described above. We found that the mRNA level of both GFAT and OGT showed a biphasic dynamic. First, GFAT and OGT mRNA was increased by up to ~3× the normal expressional rate peaking at 4 hrs post-stress, than the expressional levels gradually decreased close to the normal levels in the next 3 days.

Discussion

In this study we demonstrated the effect of 30 min. treatment with 0.5 mM H₂O₂ on the regulation of the O-GlcNAc dynamics in SH-SY5Y neuroblastoma cells. We have found that following this oxidative stress, protein O-GlcNAc modification and mRNA expressional levels of GFAT and OGT, the rate-limiting enzymes of HBP and O-GlcNAc, respectively, are all changing in a very similar manner over time (Figs 3 and 4). O-GlcNAc levels were increased significantly reaching peak values 2–4 hrs post-stress. At a longer time scale – after about 24–72 hrs – the cells apparently recovered from the stress and O-GlcNAc returned to normal levels similar to what was observed prior to stress. Interestingly, we found that tau phosphorylation changed in a reciprocal way; it decreased at 2–4 hrs after stress, but increased again after about 72 hrs following stress. These results suggest that O-GlcNAc modification is a sensitive, dynamic marker of cellular stress and that its interaction with other intracellular processes (such as the Alzheimer's hallmark tau phosphorylation) can have both acute and chronic consequences.

O-GlcNAc seems to regulate (or at the least influence) many intracellular processes such as cell-cycle [24], epigenetics [25], stress adaptation [12], Ca²⁺ signalling [26] or phosphorylation [27], consequently its imbalance has been investigated in the development of many diseases. Since its discovery [28], O-GlcNAc has been implicated either as a beneficial (*e.g.* in Alzheimer's disease [29] and ischemia reperfusion [30]), or as an adverse factor (insulin resistance, diabetes [22] and malignant disorders [31]). Chronic diseases in which O-GlcNAc seems to be involved take years or even decades to develop; however, O-GlcNAc also has relevance in cellular mechanisms that take place at a much shorter time scale. In particular, stress response and the role of O-GlcNAc in cellular adaptation to various stresses such as hypoxia or oxidative stress has been intensively studied [32, 33]. Most of these studies were conducted on

cardiomyocytes and on isolated perfused hearts. Overwhelming number of evidence from these studies suggests two main conclusions; (*i*) overall O-GlcNAc level tends to increase shortly after stress, (*ii*) increasing the level of O-GlcNAc seems to protect from the deleterious effect of stress [30, 34–36]. Theories have been put forward to explain the protective effect of O-GlcNAc, such as HSP activation or modulation of Ca²⁺ signalling [32, 37], but the complex pro-survival mechanism of O-GlcNAc remains to be elucidated. In contrast to cardiac tissue, relatively little is known about O-GlcNAc's behaviour during stress in the neuronal tissue. Interestingly, the available literature suggests that O-GlcNAc is rather down-regulated by hypotonic [38], or LPS-induced stress [39]. On the other hand (and paradoxically), Cheung and Hart [40] found that glucose deprivation significantly increased O-GlcNAc levels in Neuro-2a murine neuroblastoma cells. In our present experiments we have found that in SH-SY5Y cell line, which is a human neuroblastoma cell line, O-GlcNAc levels behave in a similar manner as in cardiomyocytes (Fig. 3). Moreover, O-GlcNAc elevation was accompanied by the up-regulation of key regulators of the HBP pathway, to support the cells' need for more O-GlcNAc (Fig. 4). Thus, our data demonstrate that O-GlcNAc increases upon oxidative stress are an actively regulated process in neuronal cells.

Contrary to the relatively unexplored behaviour of O-GlcNAc during acute stress response in neuronal cells, its reciprocal relationship with phosphorylation and imbalance in Alzheimer's disease is well-established [19, 22]. According to the generally accepted view, the dynamic balance between phosphorylation and O-GlcNAc modification on tau proteins in Alzheimer's patients is shifted in favour of the phosphorylation which will result in hyperphosphorylated tau and neurofibrillary tangle deposition. Stress, and especially oxidative stress is also strongly implicated in the pathophysiology of Alzheimer's disease, however, the exact relationship between oxidative stress and tau phosphorylation is controversial. Some of the oxidative agents cause hyperphosphorylation, whereas others induce de-phosphorylation of tau [41]. Multiple studies also indicated that tau hyperphosphorylation can follow, but also precede oxidative stress [42]. To our knowledge, O-GlcNAc modification of tau has not been investigated in oxidative stress before, however, common sense dictates that the reciprocal relationship between phosphorylation and O-GlcNAc should be maintained also under this condition. In our experiments, we have found that 30 min. long oxidative stress by H₂O₂ resulted in temporal decrease of tau phosphorylation at site S199 and PHF1, but reciprocal elevation in O-GlcNAc modified proteins (Fig. 3). Interestingly, the phosphorylation at site S262 showed similar dynamic pattern as O-GlcNAc levels. Although the interplay between O-GlcNAc and phosphorylation is usually characterized by same site competition, other mechanism such as proximal site

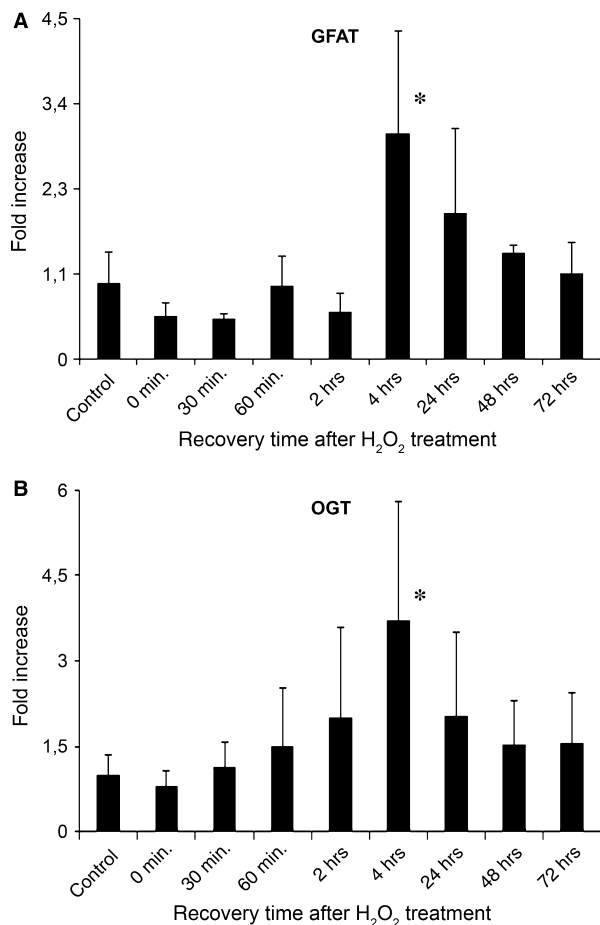


Fig. 4 Temporal dynamics of OGT and GFAT expression after oxidative stress follow similar pattern as protein O-GlcNAc modification. SH-SY5Y cells were treated with 0.5 mM H₂O₂ for 30 min. in serum-free growth medium, then the medium was replaced and cells were incubated under normal growth conditions until harvesting the cells. Each bar represents fold increase in relative levels of OGT or GFAT mRNA compared with control samples. **(A)** Relative levels of GFAT mRNA in cells exposed to oxidative stress at the indicated post-stress times. **(B)** Relative levels of OGT mRNA in cells exposed to oxidative stress at the indicated post-stress times. Data are means \pm S.E.M. from at least three independent experiments. * $P < 0.05$ versus control cells.

competition or proximal site occupation is also known [13]. Increased phosphorylation at S262 (and possibly at other sites as well) after oxidative stress despite elevated level of O-GlcNAc could be the result

References

1. Lockshin RA, Zakeri Z. Cell death in health and disease. *J Cell Mol Med.* 2007; 11: 1214–24.
2. Kültz D. Evolution of the cellular stress proteome: from monophyletic origin to ubiquitous function. *J Exp Biol.* 2003; 206: 3119–24.
3. Kültz D. Molecular and evolutionary basis of the cellular stress response. *Annu Rev Physiol.* 2005; 67: 225–57.

that either O-GlcNAc is not competing or even contributing to phosphorylation under various conditions.

Although our O-GlcNAc data collected from SH-SY5Y neuroblastoma exposed to H₂O₂ induced oxidative stress are in accordance with the data found in cardiomyocytes and also demonstrate the reciprocal relationship between O-GlcNAc and specific tau phosphorylation sites, the question whether these effects observed at short term could be understood and interpreted also under chronic conditions remains to be answered. In Alzheimer's disease, despite oxidative stress is a major factor in the pathophysiology, the dynamic of O-GlcNAc seems to be reversed. It is also important to note that diabetes is a risk factor for Alzheimer's disease [43]. One of the mechanism by which diabetes could accelerate the development of AD is increased ROS production. Insulin resistance in type 2 diabetes was also found to be associated with AD. How big of a role O-GlcNAc plays in these processes and how these processes are related to the regulation of tau phosphorylation still needs to be addressed. Nevertheless, we think that studying O-GlcNAc modification simultaneously with tau phosphorylation in oxidative stress-exposed neuronal cells should significantly contribute to the understanding of the development of Alzheimer's disease.

A number of studies deal with the role of O-GlcNAc in various stress situations [12, 13, 32, 33]. Here, we demonstrated, for the first time, that treatment with 0.5 mM H₂O₂ for 30 min. to induce oxidative stress causes a rapid, temporary increase in O-GlcNAc in SH-SY5Y neuroblastoma cells. We have also shown that the dynamic changes in protein O-GlcNAc modification can behave in an inverse relationship with tau phosphorylation during recovery from oxidative stress. Taken together, we think that O-GlcNAc regulation is an important mechanism in stress adaptation and it is conceivable that protein O-GlcNAc modification is part of a complex system that influences not only short-term effects but also chronic pathophysiological events such as Alzheimer's disease.

Acknowledgements

This work was funded by the Research Fund of the University of Pécs, Faculty of Medicine (ÁOK-KA 2013/19) and supported by János Szentágothai Research Centre, University of Pécs. We thank Professor Dr. Peter Davies at the Albert Einstein College of Medicine, Bronx, NY for providing the PHF1 antibody. EK, JP, SVP and RP performed the research; TN and AM designed the research study; JP contributed essential reagents or tools; EK and TN analysed the data; AM and TN wrote the manuscript.

Conflict of interest

The authors confirm that there are no conflicts of interest.

4. **Green DR, Galluzzi L, Kroemer G.** Metabolic control of cell death. *Science*. 2014; 345: 1250256.
5. **de Nadal E, Ammerer G, Posas F.** Controlling gene expression in response to stress. *Nat Rev Genet*. 2011; 12: 833–45.
6. **Fulda S, Gorman AM, Hori O, et al.** Cellular stress responses: Cell survival and cell death. *Int J Cell Biol*. 2010; 2010: 214074.
7. **Wu Y-T, Wu S-B, Wei Y-H.** Metabolic reprogramming of human cells in response to oxidative stress: implications in the pathophysiology and therapy of mitochondrial diseases. *Curr Pharm Des*. 2014; 20: 5510–26.
8. **Walter P, Ron D.** The unfolded protein response: from stress pathway to homeostatic regulation. *Science*. 2011; 334: 1081–6.
9. **Utz PJ, Anderson P.** Life and death decisions: regulation of apoptosis by proteolysis of signaling molecules. *Cell Death Differ*. 2000; 7: 589–602.
10. **Hartl FU, Bracher A, Hayer-Hartl M.** Molecular chaperones in protein folding and proteostasis. *Nature*. 2011; 475: 324–32.
11. **Storey KB, Wu C-W.** Stress response and adaptation: a new molecular toolkit for the 21st century. *Comp Biochem Physiol A Mol Integr Physiol*. 2013; 165: 417–28.
12. **Zachara NE, O'Donnell N, Cheung WD, et al.** Dynamic O-GlcNAc modification of nucleocytoplasmic proteins in response to stress: A survival response of mammalian cells. *J Biol Chem*. 2004; 279: 30133–42.
13. **Butkinaree C, Park K, Hart GW.** O-linked β -N-acetylglucosamine (O-GlcNAc): Extensive crosstalk with phosphorylation to regulate signaling and transcription in response to nutrients and stress. *Biochim Biophys Acta*. 2010; 1800: 96–106.
14. **Hart GW, Housley MP, Slawson C.** Cycling of O-linked β -N-acetylglucosamine on nucleocytoplasmic proteins. *Nature*. 2007; 446: 1017–22.
15. **Zachara NE, Hart GW.** Cell signaling, the essential role of O-GlcNAc!. *Biochim Biophys Acta Mol Cell Biol Lipids*. 2006; 1761: 599–617.
16. **Hahne H, Sobotzki N, Nyberg T, et al.** Proteome wide purification and identification of O-GlcNAc-modified proteins using click chemistry and mass spectrometry. *J Proteome Res*. 2013; 12: 927–36.
17. **Fülöp N, Marchase RB, Chatham JC.** Role of protein O-linked N-acetylglucosamine in mediating cell function and survival in the cardiovascular system. *Cardiovasc Res*. 2007; 73: 288–97.
18. **Rexach JE, Clark PM, Hsieh-Wilson LC.** Chemical approaches to understanding O-GlcNAc glycosylation in the brain. *Nat Chem Biol*. 2008; 4: 97–106.
19. **Deng Y, Li B, Liu F, et al.** Regulation between O-GlcNAcylation and phosphorylation of neurofilament-M and their dysregulation in Alzheimer disease. *FASEB J*. 2008; 22: 138–45.
20. **Castino R, Fiorentino I, Cagnin M, et al.** Chelation of lysosomal iron protects dopaminergic SH-SY5Y neuroblastoma cells from hydrogen peroxide toxicity by precluding autophagy and Akt dephosphorylation. *Toxicol Sci*. 2011; 123: 523–41.
21. **Chetsawang J, Govitrapong P, Chetsawang B.** Hydrogen peroxide toxicity induces Ras signaling in human neuroblastoma SH-SY5Y cultured cells. *J Biomed Biotechnol*. 2010; 2010: 3–7.
22. **Dias WB, Hart GW.** O-GlcNAc modification in diabetes and Alzheimer's disease. *Mol Biosyst*. 2007; 3: 766–72.
23. **Zhu Y, Shan X, Yuzwa SA, et al.** The emerging link between O-GlcNAc and Alzheimer disease. *J Biol Chem*. 2014; 289: 34472–81.
24. **Slawson C, Zachara NE, Vosseller K, et al.** Perturbations in O-linked β -N-acetylglucosamine protein modification cause severe defects in mitotic progression and cytokinesis. *J Biol Chem*. 2005; 280: 32944–56.
25. **Fujiki R, Chikanishi T, Hashiba W, et al.** GlcNAcylation of a histone methyltransferase in retinoic-acid-induced granulopoiesis. *Nature*. 2009; 459: 455–9.
26. **Nagy T, Champattanachai V, Marchase RB, et al.** Glucosamine inhibits angiotensin II-induced cytoplasmic Ca^{2+} elevation in neonatal cardiomyocytes via protein-associated O-linked N-acetylglucosamine. *Am J Physiol Cell Physiol*. 2006; 290: C57–65.
27. **Wang Z, Pandey A, Hart GW.** Dynamic interplay between O-linked N-acetylglucosaminylation and glycogen synthase kinase-3-dependent phosphorylation. *Mol Cell Proteomics*. 2007; 6: 1365–79.
28. **Torres CR, Hart GW.** Topography and polypeptide distribution of terminal N-acetylglucosamine residues on the surfaces of intact lymphocytes. Evidence for O-linked GlcNAc. *J Biol Chem*. 1984; 259: 3308–17.
29. **Graham DL, Gray AJ, Joyce JA, et al.** Increased O-GlcNAcylation reduces pathological tau without affecting its normal phosphorylation in a mouse model of tauopathy. *Neuropharmacology*. 2014; 79: 307–13.
30. **Ngoh GA, Hamid T, Prabhu SD, et al.** O-GlcNAc signaling attenuates ER stress-induced cardiomyocyte death. *Am J Physiol Heart Circ Physiol*. 2009; 297: H1711–9.
31. **Fardini Y, Dehennaut V, Lefebvre T, et al.** O-GlcNAcylation: A new cancer hallmark? *Front Endocrinol (Lausanne)*. 2013; 4: 99.
32. **Chatham JC, Marchase RB.** The role of protein O-linked Beta-N-acetylglucosamine in mediating cardiac stress responses. *Biochim Biophys Acta*. 2010; 1800: 57–66.
33. **Ngoh GA, Watson LJ, Facundo HT, et al.** Augmented O-GlcNAc signaling attenuates oxidative stress and calcium overload in cardiomyocytes. *Amino Acids*. 2011; 40: 895–911.
34. **Vibjerg Jensen R, Johnsen J, Buus Kristiansen S, et al.** Ischemic preconditioning increases myocardial O-GlcNAc glycosylation. *Scand Cardiovasc J*. 2013; 47: 168–74.
35. **Champattanachai V, Marchase RB, Chatham JC.** Glucosamine protects neonatal cardiomyocytes from ischemia-reperfusion injury via increased protein O-GlcNAc and increased mitochondrial Bcl-2. *Am J Physiol Cell Physiol*. 2008; 294: C1509–20.
36. **Liu J, Pang Y, Chang T, et al.** Increased hexosamine biosynthesis and protein O-GlcNAc levels associated with myocardial protection against calcium paradox and ischemia. *J Mol Cell Cardiol*. 2006; 40: 303–12.
37. **Nagy T, Miseta A, Kovacs L.** Protein-associated O-GlcNAc, a multifunctional mechanism in cell signaling and its role in the pathogenesis of diabetes, stress and malignant diseases. *Biochem Medica*. 2007; 17: 162–77.
38. **Kommaddi RP, Dickson KM, Barker PA.** Stress-induced expression of the p75 neurotrophin receptor is regulated by O-GlcNAcylation of the Sp1 transcription factor. *J Neurochem*. 2011; 116: 396–405.
39. **Zheng GM, Yu C, Yang Z.** Puerarin suppresses production of nitric oxide and inducible nitric oxide synthase in lipopolysaccharide-induced N9 microglial cells through regulating MAPK phosphorylation, O-GlcNAcylation and NF- κ B translocation. *Int J Oncol*. 2012; 40: 1610–8.
40. **Cheung WD, Hart GW.** AMP-activated protein kinase and p38 MAPK activate O-GlcNAcylation of neuronal proteins during glucose deprivation. *J Biol Chem*. 2008; 283: 13009–20.
41. **Su B, Wang X, Lee H-G, et al.** Chronic oxidative stress causes increased tau phosphorylation in M17 neuroblastoma cells. *Neurosci Lett*. 2010; 468: 267–71.
42. **Luque-Contreras D, Carvajal K, Toral-Rios D, et al.** Oxidative stress and metabolic syndrome: cause or consequence of Alzheimer's disease? *Oxid Med Cell Longev*. 2014; 2014: 1–11.
43. **Verdile G, Fuller SJ, Martins RN.** The role of type 2 diabetes in neurodegeneration. *Neurobiol Dis*. 2015; 84: 22–38.