

ARTICLE

Received 7 Jul 2016 | Accepted 23 Nov 2016 | Published 4 Jan 2017

DOI: 10.1038/ncomms14034

OPEN

Architecture and mechanism of the late endosomal Rab7-like Ypt7 guanine nucleotide exchange factor complex Mon1-Ccz1

Stephan Kiontke¹, Lars Langemeyer², Anne Kuhlee³, Saskia Schuback¹, Stefan Raunser³,
Christian Ungermann² & Daniel Kümmel¹

The Mon1-Ccz1 complex (MC1) is the guanine nucleotide exchange factor (GEF) for the Rab GTPase Ypt7/Rab7 and is required for endosomal maturation and fusion at the vacuole/lysosome. Here we present the overall architecture of MC1 from *Chaetomium thermophilum*, and in combining biochemical studies and mutational analysis in yeast, we identify the domains required for catalytic activity, complex assembly and localization of MC1. The crystal structure of a catalytic MC1 core complex bound to Ypt7 provides mechanistic insight into its function. We pinpoint the determinants that allow for a discrimination of the Rab7-like Ypt7 over the Rab5-like Vps21, which are both located on the same membrane. MC1 shares structural similarities with the TRAPP complex, but employs a novel mechanism to promote nucleotide exchange that utilizes a conserved lysine residue of Ypt7, which is inserted upon MC1 binding into the nucleotide-binding pocket of Ypt7 and contributes to specificity.

¹Division of Structural Biology, Department of Biology/Chemistry, University of Osnabrück, Barbarastraße 13, Osnabrück 49076, Germany. ²Biochemistry Section, Department of Biology/Chemistry, University of Osnabrück, Barbarastraße 13, Osnabrück 49076, Germany. ³Department of Structural Biochemistry, Max-Planck-Institute of Molecular Physiology, Otto-Hahn-Straße 11, Dortmund 44227, Germany. Correspondence and requests for materials should be addressed to D.K. (email: daniel.kuettel@uos.de).

Eukaryotic cells are compartmentalized into organelles, which fulfil specialized functions. Exchange of substances between these membrane compartments is mediated by vesicular transport¹. In this context, the endocytic compartment plays a central role in the sorting of cargo between the plasma membrane, the Golgi apparatus and the lysosome (vacuole in yeast) for recycling or degradation. Uptake of extracellular material and plasma membrane components into the cell is initially mediated by the budding of endocytic vesicles that fuse to form early endosomes (EEs) and subsequently mature to late endosomes (LEs). The LE acts as a general sorting station within the cell and represents a central hub in the endocytic pathway. Endosomal cargo can either be recycled to the Golgi or the plasma membrane, or is delivered to the lysosome/vacuole along with Golgi vesicles and autophagic structures for degradation.

The identity of different organelles is conveyed by Rab GTPases². Rabs belong to the superfamily of Ras-like small GTPases and cycle between a GDP-bound 'off' state, in which they show cytosolic localization, and a GTP-bound 'on' state where Rabs associate with membranes and bind effectors. The nucleotide-binding pockets of Ras-like GTPases contain a guanine base recognition motif and P-loop motif, which coordinates the nucleotide β -phosphate and a Mg^{2+} ion as essential cofactor. Furthermore, two variable regions - switch I and switch II - adopt distinct conformations depending on the nucleotide-loading state of the GTPase.

The intrinsic GTP hydrolysis rate of Rab GTPases is low; thus, their inactivation requires GTPase-activation proteins (GAPs). RabGAPs contain TBC (Tre-2/Bub2/Cdc16) domains, which insert conserved arginine and glutamine residues into the Rab nucleotide-binding pocket to catalyse GTP hydrolysis to GDP³. Activation of GTPases, which importantly coincides with membrane recruitment, in turn requires guanine nucleotide exchange factors (GEFs). In contrast to RabGAPs, RabGEFs are structurally and mechanistically diverse^{4,5}. The underlying principle of nucleotide exchange common to all GEFs is that switch I and switch II are remodelled such that the affinity for nucleotide is lowered. GDP will leave the binding pocket and when the binding site is re-occupied by GTP, which is present at 10-fold higher concentrations than GDP in the cytosol, the transient GEF-GTPase complex falls apart. DENN domain proteins constitute the largest family of RabGEFs and remodel but do not block the nucleotide-binding pocket⁶. Vps9 GEFs, in contrast, additionally use insertion of a conserved aspartate to sterically expel nucleotide from the GTPase^{7,8}. The TRAPP complex is a unique oligomeric GEF with three subunits participating in catalysis. As a variation to Vps9, TRAPP sticks an acidic glutamate into the nucleotide-binding pocket⁹. A fourth example for a RabGEF is Sec2, which forms an asymmetric coiled-coil dimer that has not been observed in any other GEF^{10,11}.

Finally, the family of heterodimeric RabGEFs consists of the Hps1-Hps4 (BLOC3) and Mon1-Ccz1 (MC1) complexes¹²⁻¹⁴. BLOC3 promotes nucleotide exchange for Rab32 and Rab38 and plays an essential role in the biogenesis of lysosome-related organelles¹³. Mutations in BLOC3 can cause the Hermansky-Pudlak syndrome, a genetic disease associated with albinism, defective cellular storage and bleeding disorders that leads to pulmonary fibrosis¹⁵. MC1 has been identified as the GEF for Rab7/Ypt7 and localizes to LEs^{12,16}. The structure and mechanism of the heterodimeric RabGEFs is not known, but the presence of a longin domain in each subunit, which are required for complex formation, is a characteristic feature^{12,13,17}. Longin domains are found in several Rab-interacting proteins, including DENN GEFs and the TRAPP complex, but the

interacting structural motifs of the longin domain vary¹⁸. However, two longin subunits in TRAPP form a heterodimer that also contributes to GEF activity of TRAPP. A similar structural module might be used by the heterodimeric GEFs^{9,17}.

The MC1 complex has been characterized in several species¹⁹⁻²⁴. It plays an essential role in a Rab cascade that defines the endolysosomal system and orchestrates the Rab switch between Rab5 and Rab7 (ref. 25). Its function is conserved in yeast, where it promotes the switch of Vps21 to Ypt7. EEs are initially positive for the GTPase Rab5 (Vps21 in yeast). The sequential inactivation of Rab5 and activation of Rab7 (Ypt7 in yeast), which then serves as marker for LEs, confers membrane identity and directionality during the endosomal maturation process²⁶. The current model suggests that MC1 is initially recruited by Rab5/Vps21, the phospholipid phosphoinositol-3-phosphate (PI3P) and probably further factors to endosomes²⁷. Via its GEF activity, MC1 will trigger localization of active Rab7/Ypt7 to the membrane. At the same time, MC1 is thought to oust the Rab5 GEF and promote recruitment of Rab5 GAP²⁸. Thus, MC1 action will rapidly remove Rab5 from the endosomal membrane and replace it with Rab7, switching organelle identity from EE to LE.

The molecular mechanism, by which heterodimeric RabGEFs fulfil their functions, remained unclear. We now provide the structural and biochemical characterization of the MC1 complex architecture and the catalytic mechanism. Furthermore, we investigate the localization requirements for proper function of MC1 *in vivo*. Our study shows that MC1 forms a heterotetrameric complex with specific localization domains and a catalytic core that acts through a unique mechanism, thus representing a novel class of RabGEFs.

Results

Architecture of the Mon1-Ccz1 complex. The heterodimeric Mon1-Ccz1 (MC1) complex from *Saccharomyces cerevisiae* (ScMC1) has been successfully used in biochemical studies, but the recombinant proteins show low expression levels, aggregation and instability. Proteins from the thermophilic fungus *Chaetomium thermophilum* have been shown to be better suited for structural studies than homologues from other species²⁹. We therefore used Mon1 and Ccz1 from *C. thermophilum*, which show an analogous domain architecture compared with the *S. cerevisiae* MC1 complex (Supplementary Fig. 1a): importantly, longin domains at the N-terminus of Ccz1 and in Mon1, which mediate complex assembly, are conserved. In addition, Mon1 and Ccz1 contain putative α -helical C-terminal domains, and the very N-terminal ~150 amino acids of Mon1 are predicted to be disordered.

The full-length CtMC1 (CtMC1full) complex could be produced using co-expression and was purified to homogeneity. The complex elutes as an apparent ~300 kDa particle with a 1:1 stoichiometry of CtMon1 and CtCcz1 on gel filtration, suggesting that the proteins form a dimer of heterodimers (Supplementary Fig. 1b). To more comprehensively investigate the overall architecture of the full complex, we used electron microscopy (EM). The CtMC1 complex was analysed by negative stain EM and single particle analysis (Supplementary Fig. 1c-g). The complex has a globular ellipsoid structure with dimensions of 12 nm \times 7 nm, consistent with a size range of 250-350 kDa. CtMC1 lies on the grid at random orientations along the long axis of the particle, yielding different side views and intermediates between side and top views (Supplementary Fig. 1c). A total of 22,165 particles were classified into 100 classes (Supplementary Fig. 1d). The averages appear to be twofold symmetric, which indicates a dimerization of heterodimers. However, a three-

dimensional (3D) reconstruction at $\sim 17 \text{ \AA}$ resolution (Supplementary Fig. 1e–g) of CtMC1 does not show a clear twofold symmetry as one might expect, suggesting a non- or pseudo-symmetrical interaction. Overall, EM analysis establishes that CtMC1 forms a tetramer with two copies of each protein, in line with the observations from gel filtration.

When co-expressed with a nucleotide-free mutant of Ypt7 (CtYpt7–N125I), a stable $\sim 350 \text{ kDa}$ complex consisting of two copies each of CtMon1, CtCcz1 and CtYpt7 was isolated on gel filtration (Supplementary Fig. 1h). We further dissected CtMC1 architecture by generating truncation constructs. Removal of the CtMon1 N-terminus (residues 1–140) had no effect on complex stability; however, the additional deletion of CtCcz1 C-terminus (residues 250–796, CtMC1 Δ) eluted as an $\sim 110 \text{ kDa}$ particle containing MC1 and Ypt7. Thus, dimerization of the MC1 heterodimer was lost. We also co-expressed the predicted longin domain fragments (CtMC1core: CtMon1 195–355 and CtCcz1 1–249). The longin domains had previously been shown to mediate interaction between Mon1 and Ccz1 (ref. 12). For the Mon1 construct, an additional N-terminal helix $\alpha 0$ was needed for stability of the protein. The core complex still bound Ypt7 but showed a trimer/hexamer equilibrium (Supplementary Fig. 1h). Because MC1 Δ –Ypt7, which additionally contains the C-terminus of Mon1, elutes as a trimer, we conclude that hexamer formation of MC1core–Ypt7 is an artifact from the truncation of Mon1 that does not reflect a functional interaction mode and does not occur in the context of full complex. Taken together, the longin domains of Mon1 and Ccz1 form a heterodimer that is sufficient to bind Ypt7, and the C-terminus of Ccz1 represents a homodimerization domain for MC1.

Requirements for MC1 complex functionality. Binding studies showed that the CtMC1core complex binds to Ypt7, suggesting that it might be sufficient to convey the catalytic activity of the whole complex. We used a fluorescence-based GEF activity assay⁴ to compare the activity of CtMC1full and CtMC1core (Fig. 1a and Supplementary Fig. 2a,b). Recombinantly purified CtMC1full showed a concentration-dependent GEF activity towards its Rab GTPase CtYpt7 upon addition of GTP (k_{cat}/K_M $2.1 \times 10^4 \text{ M}^{-1} \text{ s}^{-1}$). The enzyme-mediated exchange rates differed significantly from the intrinsic rate of the CtYpt7–MANT–GDP complex without CtMC1. In contrast, absence of GTP induced no significant release of MANT–GDP, thus demonstrating that all observed nucleotide exchange reactions are GTP-driven (Supplementary Fig. 2a). The CtMC1core complex exhibits a similar catalytic efficiency (k_{cat}/K_M $2.3 \times 10^4 \text{ M}^{-1} \text{ s}^{-1}$) compared with the full-length GEF complex, which demonstrates that residual parts are not crucial for GEF function.

Because the longin dimer subcomplex of MC1 was sufficient to catalyse nucleotide exchange of Ypt7, we wanted to address the function of the remaining domains of the complex. In yeast cells, MC1 has to localize to endosomal structures¹². On the basis of our analysis of the architecture of CtMC1, we designed truncations of yeast Mon1 and Ccz1 and tested their ability to rescue the vacuole fragmentation phenotype in a knockout background (Fig. 1b,c). The deletion of the N-terminus of Mon1 did not affect the localization of the protein and consequently rescued vacuolar morphology. In contrast, deletion of the Mon1 C-terminus alone and in combination with the N-terminus resulted in cytosolic localization and vacuoles remained fragmented. Similarly, deletion of the Ccz1 C-terminus rendered the complex dysfunctional, and the protein was mislocalized. This suggests that the C-terminal domains of Mon1 and Ccz1 jointly are required to localize

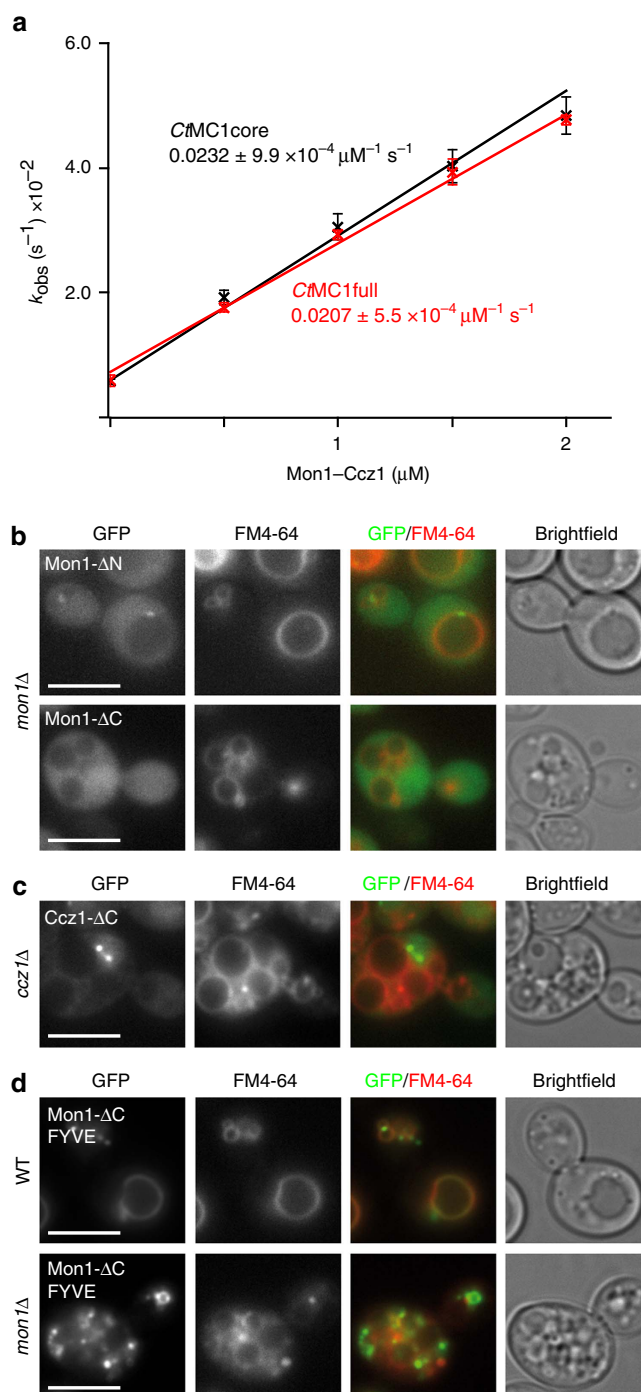


Figure 1 | Catalytic activity and localization requirements of Mon1–Ccz1.

(a) Nucleotide exchange rates of Ypt7 are plotted as a function of CtMC1 concentrations. The catalytic efficiency of full-length CtMC1 and a truncated CtMC1core complex (Mon1 195–355, Ccz1 1–249) are comparable. Error bars represent s.d. of three independent biological repeats. (b) GFP-tagged truncations of ScMon1 and (c) ScCcz1 are introduced into *mon1 Δ* and *ccz1 Δ* yeast knockout strains. The N-terminus of Mon1 is dispensable, but deletion of the Mon1 and Ccz1 C-termini cause mislocalization and vacuolar fragmentation. (d) The C-terminus of Mon1 is replaced by a PI3P-binding FYVE domain and artificially recruited to endosomal and vacuolar membranes as seen in a wild-type background, but Mon1- Δ C-FYVE is not able to complement a *mon1 Δ* strain. Scale bars: 5 μm .

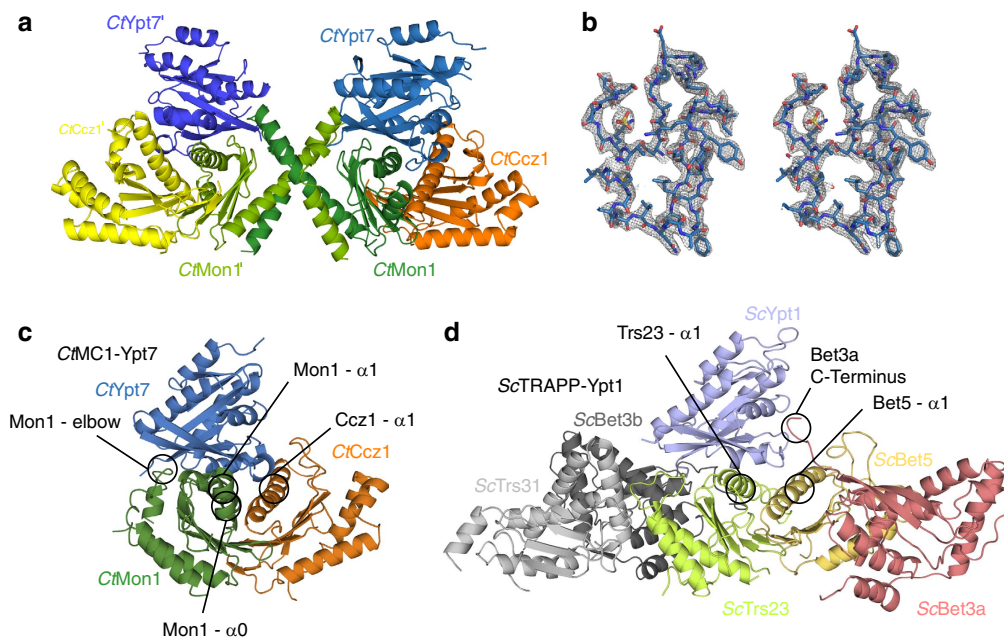


Figure 2 | Crystal structure of the catalytic CtMC1core complex bound to nucleotide-free CtYpt7-N125I. (a) The content of the asymmetric unit is shown, comprising two copies of Ypt7 and two Mon1-Ccz1 heterodimers that interact via the domain-swapped helix $\alpha 3$ of Mon1. (b) Stereo image of the $2F_o - F_c$ electron density map at 1.8σ contour level of the switch I, switch II and P-loop region of CtYpt7-N125I bound to MC1. (c) Complex structures of MC1 with Ypt7 where the domains' swap was corrected to represent the likely functional unit. (d) Complex structure of TRAPP with Ypt1. The different interaction interfaces between GTPase and GEF are marked.

MC1 to endosomal membranes. The Mon1 C-terminus alone did not associate with membranes in a wild-type background, neither did a fusion construct comprising both C-termini of Mon1 and Ccz1 (Supplementary Fig. 2d). Thus, Mon1 and Ccz1 not only cooperate in membrane recruitment by providing additive binding interfaces, the defined arrangement of these modules in the context of the properly assembled MC1 complex seems also necessary.

Previous studies suggested that PI3P binding of MC1 is a major determinant of membrane localization. We wondered whether artificially tethering MC1 to PI3P-positive membranes can rescue its function. The C-terminal domain of Mon1 is predicated to have a strikingly high isoelectric point (CtMon1: aa 486–665, $pI = 9.42$), suggesting that its surface is positively charged and thus is prone to interacting with negatively charged lipid head groups like of PI3P. We therefore replaced the C-terminus of Mon1 by the FYVE domain of the EEA1 (early endosomal antigen 1), which has been shown to specifically and robustly interact with PI3P. Although Mon1 Δ C-FYVE was efficiently recruited to endosomes and vacuoles, vacuolar morphology was not restored (Fig. 1d). Taken together, we conclude that functionality of MC1 requires its proper localization to specific endosomal microcompartments, which involves both the termini of Mon1 and Ccz1 and their proper arrangement within the complex.

Crystal structure of the catalytic CtMC1core with Ypt7. To gain mechanistic insight into MC1 function, we determined the crystal structure of the catalytically active CtMC1core bound to the nucleotide-free CtYpt7-N125I. The structure was refined to 2.5 Å resolution revealing two CtMC1-Ypt7 complexes per asymmetric unit (Table 1 and Fig. 2a,b). Both complexes are structurally highly similar (r.m.s.d. 0.324 Å over 411 C_α atoms; ref. 30). Thus, the following structural analyses will refer to the complex of CtYpt7 chain C, which shows better defined

electron density. We used full-length CtYpt7 for crystallization, but the hypervariable region is not resolved in the electron density map. Mon1 as well as Ccz1 adopt the typical longin domain architecture (Supplementary Fig. 3), with Mon1 harbouring an additional α -helix $\alpha 0$ at the N-terminus (D211 to G220). This helix is conserved in Mon1—including the yeast and human protein—and an integral part of the globular Mon1 fold. Two extensive loops in CtCcz1 between β -strand $\beta 2$ and α -helix $\alpha 1$ as well as $\beta 5$ and $\alpha 2$ are disordered. The latter is flanked by two short additional β -strands. In the asymmetric unit the C-terminal α -helices $\alpha 3$ of both CtMon1 molecules are swapped such that a dimer of the trimeric CtMC1-Ypt7 complex is formed (Fig. 2a). This likely explains the trimer/hexamer equilibrium observed for MC1core-Ypt7 on gel filtration. Because MC1 Δ -Ypt7, which also contains the C-terminus of Mon1, was monomeric, we reason that in the context of full complex, no domain swap occurs and $\alpha 3$ of Mon1 will not interact *in trans*.

We tried to identify a possible hinge where the domain swap might occur. Helix $\alpha 2$ is interrupted by a kink introduced by a proline (P317) and followed by a 15 amino-acid 'elbow loop' that connects $\alpha 2$ and $\alpha 3$, indicating substantial conformational flexibility in this region. It is therefore possible that $\alpha 2$ is bent at position 317 at a different angle in the context of the full complex, which would then allow a different orientation of the elbow loop and helix $\alpha 3$ to interact *in cis*. On the basis of these considerations, we generated a composite model of the likely functional biological unit without domain swap where the elbow loop folds back and $\alpha 3$ completes the longin fold of Mon1 intramolecularly (Fig. 2c and Supplementary Fig. 4a,b).

The heterodimerization of CtMon1 and CtCcz1 is mainly mediated by the central β -strands of both proteins, which form a continuous β -sheet, and the α -helices $\alpha 1$, which are oriented on top of the β -sheet alongside another in an antiparallel manner. This $\alpha 1$ surface also represents the main interaction site

Table 1 | Crystallographic statistics of the CtMC1core–Ypt7 complexes.

	CtMC1core–Ypt7 (SAD peak)	CtMC1core–Ypt7 (pdb code: 5LDD)
Data collection		
X-ray source	Beamline P13, EMBL, Hamburg, Germany	
Detector	PILATUS 6M	
Wavelength (Å)	0.97958	0.97951
Space group	$P2_12_12_1$	$P2_12_12_1$
Cell dimensions (<i>a,b,c</i> Å)	62.56, 100.57, 207.10	70.08, 103.81, 206.67
Resolution (Å)	48.86–2.89 (3.07–2.89)	46.38–2.49 (2.65–2.49)
Total reflections	392922	346702
Multiplicity	6.97	6.53
Unique reflections	56335	53101
Completeness (%)	99.7 (98.6)	99.5 (98.1)
R_{meas} (%)	13.1 (78.5)	7.6 (90.9)
CC 1/2 (ref. 50)	99.7 (84.8)	99.9 (91.9)
$I/\sigma(I)$	11.77 (2.72)	15.24 (2.62)
Mosaicity (°)	0.153	0.134
Wilson <i>B</i> -factor (Å ²)	60.89	69.32/46.3*
Refinement		
Resolution (Å)		46.38–2.50
$R_{\text{work}}, R_{\text{free}}$		0.200, 0.241
Reflections (working, test set)		46240, 1839
Completeness for range (%)		86.7
r.m.s.d. from ideal		
Bond lengths (Å)		0.004
Bond angles (°)		0.620
Total number of atoms		7670
Mean <i>B</i> value (Å ²)		71.3
Values in parentheses denote the highest resolution shell.		
*After anisotropy correction.		

with Ypt7 (ref. 31; Supplementary Table 1). The interface of the MC1 complex with Ypt7 is mainly formed by Mon1 (~960 Å²) with smaller contributions of Ccz1 (~450 Å²). An additional interaction interface is formed by the ‘elbow loop’ between helices $\alpha 2$ and $\alpha 3$ of Mon1 that interacts with the $\alpha 3$ – $\beta 5$ loop of Ypt7 (~350 Å²).

The overall arrangement of the complex resembles the structure of the five-subunit TRAPP GEF complex bound to its substrate Ypt1 (Fig. 2d). The subunits Trs23 and Bet5, homologous to Mon1 and Ccz1, respectively, also form a longin dimer with a central β -sheet and interact with Ypt1 via an interface formed by the $\alpha 1$ helices³². Differences are the contribution of a third subunit, Bet3, which inserts its C-terminus into the Ypt1-binding pocket. No equivalent structural feature is present in MC1. Instead, helix $\alpha 0$ and the elbow loop of Mon1 make additional contacts with the GTPase not found for TRAPP. Therefore, the interface between the MC1 longin dimer with 1,760 Å² is significantly larger than between TRAPP Trs23 and Bet5 and Ypt1, which covers only ~1,070 Å².

Recognition of Ypt7 over Vps21. Several GEFs have been shown to have limited selectivity regarding their GTPase substrate. However, since Ypt7 and Vps21 like MC1 are localized to the endosomal compartment, MC1 should discriminate between both proteins. Indeed, CtMC1 did not show measurable activity towards CtVps21 (Fig. 3a). In a sequence alignment we searched for MC1-interacting residues that are conserved within in the Ypt7 family but differ from the Vps21 family in yeast and *C. thermophilum* (Fig. 3b and Supplementary Fig. 5). We introduced the corresponding mutations in CtYpt7, which change polarity (Y37R), introduce charge inversion (E47R) or change small to bulky residues (T58K, A76M/G80N) and tested their functionality in the GEF assay (Fig. 3a). The charge inversion

E47R could be tolerated, leading to only a slight decrease in catalytic activity of MC1. For the remaining mutations, however, no MC1-stimulated nucleotide exchange could be detected. Thus, a few key residues render the surface properties of Vps21 incompatible with MC1 interaction and thus guarantee GEF specificity for Ypt7.

Guanine nucleotide exchange mechanism by the MC1 complex.

We first tested the contributions of the different MC1–Ypt7 interaction interfaces to the efficiency of nucleotide exchange (Fig. 4). On the basis of the homology to TRAPP, the $\alpha 1$ interface has been proposed as important for GEF activity before¹⁷. We generated three sets of double mutants in the $\alpha 1$ interface of CtMC1, G250W/T254K and G232P/K233D in CtMon1 and G106W/G110M in CtCcz1. To test for the requirement of the elbow loop of Mon1, we mutated a conserved SxDxR motif that interacts with Ypt7 (S328W/D330A/R332A) and replaced the entire loop by a GS-linker (S312-[GS]₆-E339; Fig. 4a). All mutant complexes expressed well and yielded homogenous protein, but they had no detectable nucleotide exchange activity in the fluorescence GEF assay (Fig. 4b).

For a correlation with functionality *in vivo*, we used *mon1* Δ and *ccz1* Δ yeast deletion strains, which show a vacuolar fragmentation phenotype as a consequence of defective Ypt7 activation in these cells. The expression of GFP–Mon1 or GFP–Ccz1, respectively, rescues the phenotype. We tested mutants of the yeast proteins that are equivalent to the mutations we had introduced in CtMC1 for their ability to complement the knockout (Fig. 4c,d). Consistent with the results from *in vitro* characterization, none of the mutants was able to rescue. All mutants properly localized to endosomal structures in a wild-type background (Supplementary Fig. 6), showing that the observed effects arise from defective interaction of MC1 with

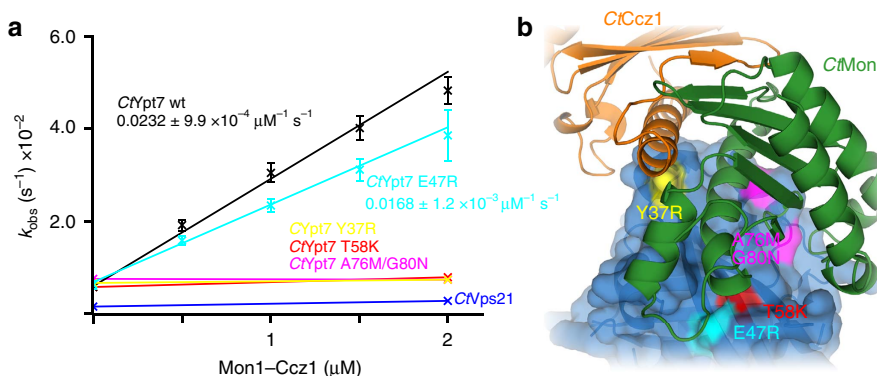


Figure 3 | Selectivity of Mon1-Ccz1 for Ypt7 over Vps21. (a) For CtVps21, CtYpt7 and different mutations, nucleotide exchange rates are plotted as a function of CtMC1core concentration. Error bars represent s.d. of three independent biological repeats. (b) MC1-interacting interface of Ypt7 is shown in blue. Positions that are conserved in the Ypt7 family, but not the Vps21 family, are highlighted. Labels show the mutations from Ypt7- to Vps21-specific residues. Colours correspond to the graphs in b.

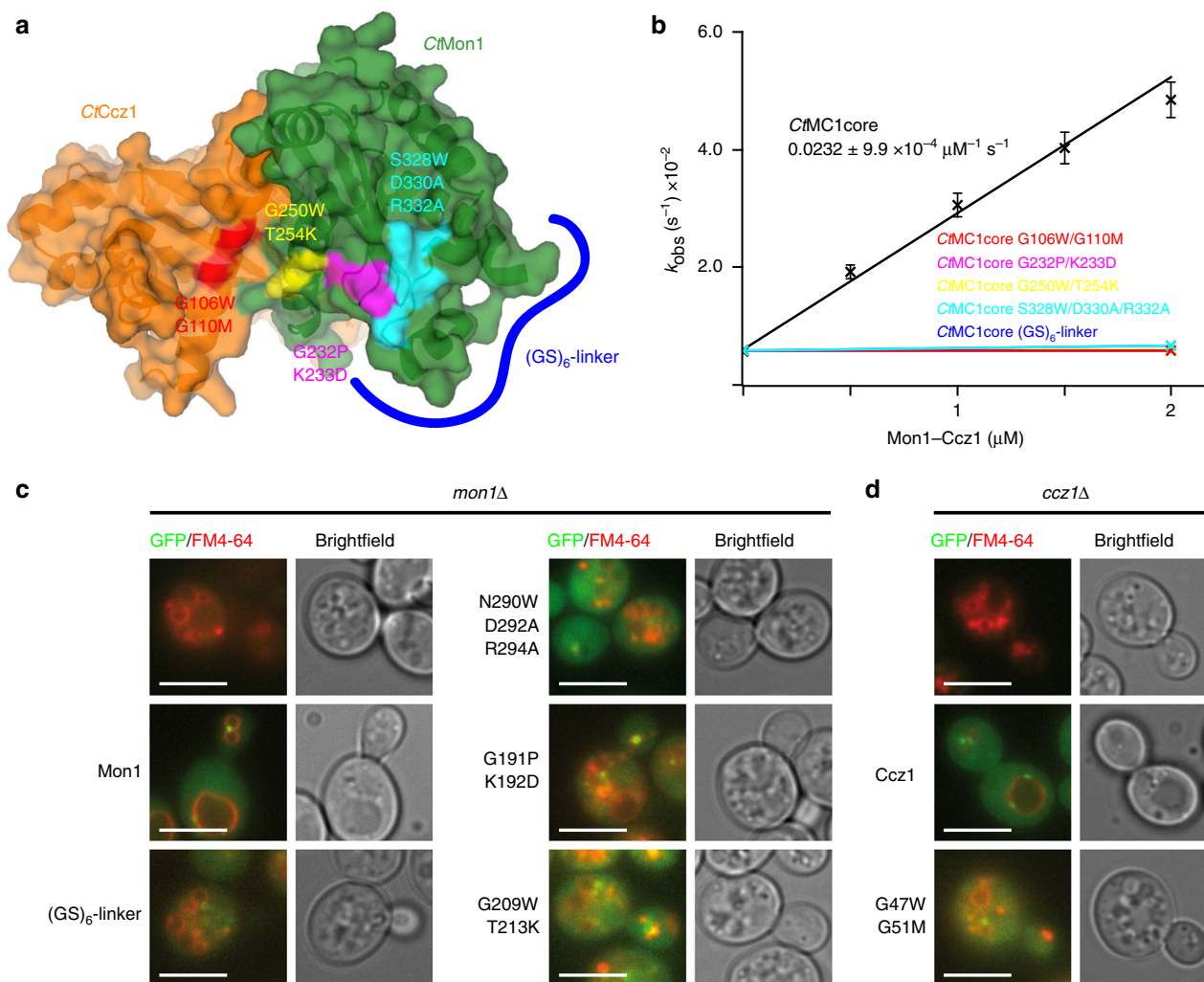


Figure 4 | Interaction of Mon1-Ccz1 with Ypt7. (a) Surface representation of the CtMC1 longin heterodimer. Mutations introduced in the interaction interface with Ypt7 are labelled. (b) Nucleotide exchange rates of Ypt7 are plotted as a function of the concentration of CtMC1core wild-type and different mutations. Error bars represent s.d. of three independent biological repeats. Colours of the graphs correspond to highlighted mutations in a. Functionality test of mutations in (c) *mon1*Δ and (d) *ccz1*Δ yeast knockout strains. The vacuolar fragmentation phenotype is rescued by the introduction of ScMon1 and ScCcz1, respectively, but not the mutations corresponding to the GEF-deficient mutants described above. Scale bars: 5 μm .

Ypt7. Importantly, the elbow loop represents a previously unrecognized structural element that is essential for MC1 functionality.

In the CtMC1–Ypt7 complex, the conformation of the Ypt7 P-loop is identical to the nucleotide-bound form and coordinates a sulfate ion from the crystallization condition at the

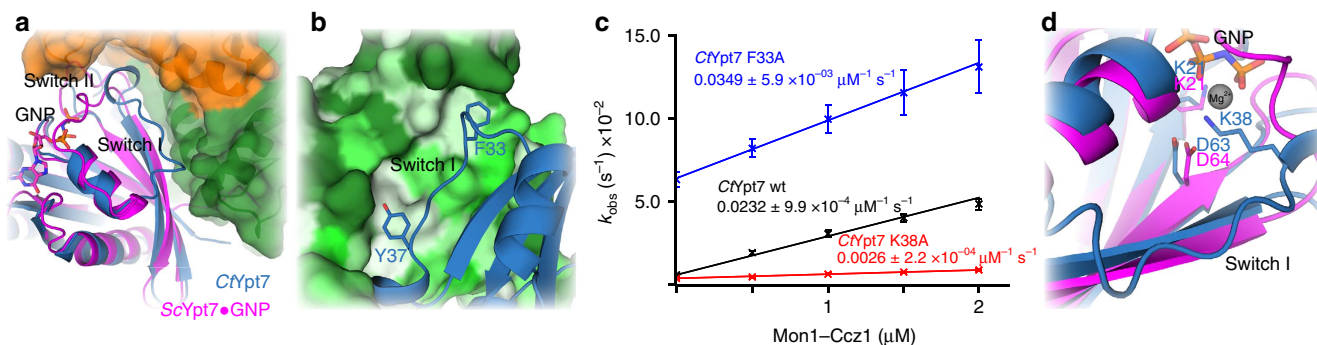


Figure 5 | Mechanism of nucleotide exchange by Mon1-Ccz1. (a) Superposition of ScYpt7 bound to the GTP analogue GNP in magenta with MC1-bound CtYpt7 in blue. The switch I and switch II regions, which undergo major rearrangements, are labelled. (b) Interaction of F33 and Y37 from switch I of Ypt7 with two hydrophobic pockets on MC1. The surface of MC1 is coloured according to hydrophobicity from green (hydrophilic) to grey (hydrophobic). (c) Nucleotide exchange rates of CtYpt7 wild type and the mutants F33A and K38A are plotted as a function of the concentration of CtMC1core. Error bars represent s.d. of three independent biological repeats. (d) Close-up of the nucleotide pocket from ScYpt7-GNP and MC1-bound CtYpt7. The position of switch II D63/64 and P-loop K21 are unaltered. K38 from switch I is inserted into the pocket and clashes with the Mg^{2+} involved in coordinating nucleotides.

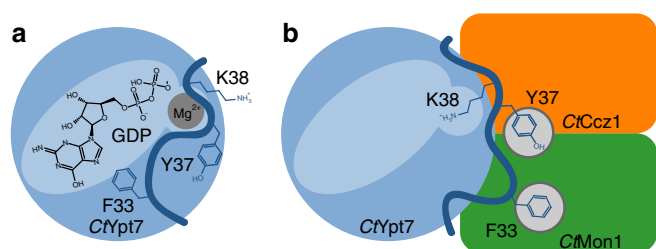


Figure 6 | Model of the nucleotide exchange mechanism by Mon1-Ccz1. (a) F33 of Ypt7 interacts with the guanosine base to stabilize nucleotide binding. Switch I closes the binding pocket with Y37 and K38 solvent exposed. (b) F33 and Y37 are fixed in hydrophobic pockets on Mon1-Ccz1, leading to switch I rearrangement and opening of the nucleotide-binding pocket. In addition, K38 of Ypt7 is inserted into the nucleotide pocket, repelling with its positively charged terminal amine group the Mg^{2+} cofactor ion from the binding site.

position that would be occupied by the β -phosphate of GDP or GTP. The presence of a phosphate or sulfate ion at this position is a common feature of some GEF-GTPase complex crystal structures^{33,34}. Interaction with MC1 leads to a dramatic remodelling of the nucleotide-binding pocket of Ypt7 (Fig. 5a). Switch I is moved 18 Å and switch II 8 Å compared with the active conformation observed for ScYpt7 in complex with the GTP analogue GNP (guanosine 5'-[β,γ -imido]triphosphate)³⁵. The entire switch I is ordered and held in place by the interaction of the aromatic switch I residues F33 and Y37 with hydrophobic binding pockets on MC1 (Fig. 5b). The interaction of Y37 with MC1 is essential for GEF function, as nucleotide exchange of CtYpt7-Y37R was no longer stimulated by CtMC1 (Fig. 3a). F33 is a conserved key residue that was described to stabilize nucleotide binding to Ypt7 via edge-to-face interactions³⁵. As expected, the intrinsic nucleotide exchange rate of a CtYpt7-F33A mutant was strongly elevated by an order of magnitude (Fig. 5c and Supplementary Fig. 7a). The dislocation of this aromatic residue from the binding pocket was reported as part of the nucleotide release mechanism for TRAPP⁹ and DENND1 (ref. 6). Surprisingly, addition of CtMC1 could still further stimulate nucleotide exchange of CtYpt7-F33A with a catalytic efficiency comparable to CtYpt7 wild-type protein (k_{cat}/K_M $3.5 \times 10^4 \text{ M}^{-1} \text{ s}^{-1}$, Fig. 5c and Supplementary Fig. 2c), suggesting a negligible role in the mechanism.

Another striking consequence of the switch I conformation imposed by MC1 is that K38 of Ypt7 is inserted into the nucleotide-binding pocket (Fig. 5d). In the active Ypt7 conformation, this residue is surface-exposed and disordered, but in complex with the GEF, the lysine amine group occupies the position of the Mg^{2+} ion in the nucleotide-bound structures. A lysine at this position of switch I is conserved in the Rab7 family (Supplementary Fig. 7b). We envisage that upon MC1 binding to Ypt7, K38 will push the Mg^{2+} out of the binding pocket and thus destabilize nucleotide binding. To test the importance of this mechanism, we generated a CtYpt7-K38A mutant. The basal exchange rate of the mutant was only slightly reduced by a factor of two compared to wild-type CtYpt7 (Supplementary Fig. 7a) and the catalytic efficiency of MC1 for this mutant was strongly reduced by an order of magnitude to $2.6 \times 10^3 \text{ M}^{-1} \text{ s}^{-1}$ (Fig. 5c). Thus, reorientation of a Rab switch I lysine into the nucleotide-binding pocket represents a novel mechanism employed by a RabGEF.

Discussion

The analysis of the entire MC1 complex by electron microscopy established that Mon1 and Ccz1 form a globular heterotetramer with two copies of each protein. The complex shows a double-winged overall architecture with a pseudo-twofold symmetry. Mon1 and Ccz1 assemble into this arrangement via two distinct interfaces. The longin domains in both proteins mediate the formation of heterodimers, which then interact with the C-terminal domain of Ccz1 to form the complete complex. The heterotetrameric arrangement is required for full functionality of MC1 *in vivo*. We find that different molecular functions of MC1 are carried out by distinct domains within the complex: whereas the C-termini of Mon1 and Ccz1 are needed for proper localization of MC1, the longin heterodimer catalyses nucleotide exchange of Ypt7 - but only jointly in the context of the assembled complex these different activities constitute the entire MC1 functionality. For MC1 it has been shown that membrane binding leads to a dramatic increase in catalytic activity¹⁷. This is likely the result of the locally increased concentration of enzyme and substrate in two dimensions as seen for the GAP Rasal³⁶. Whether orientation effects might play a role as well warrants further investigation.

The activation of Rab GTPases is coupled with their binding to membranes. Therefore, the localization of GEFs is crucial for proper recruitment of the cognate Rab protein. Identity of

membranes in the endomembrane system is in part conveyed by phosphatidylinositides, of which different species are concentrated at different membranes by respective kinases and phosphatases. The membranes of the endosomal system are enriched in PI3P³⁷. Previous work had shown that binding to PI3P represents an important factor to recruit MC1 to model membranes¹⁷, providing a potential mechanism for MC1 localization to membranes. We find that PI3P binding alone is not sufficient to guarantee functionality of MC1 *in vivo*. When we artificially tethered the catalytically active MC1core to PI3P-positive membranes, yeast cells still showed vacuolar fragmentation indicative of defective Ypt7 activation and impaired fusion. Likely, MC1 has to be concentrated or confined to specific microcompartments, and additional factors like regulatory proteins are needed to coordinate MC1 recruitment. In addition, proper orientation on the membrane could be required. One important factor might be the Rab5-like Vps21, the upstream Rab GTPase in the endosomal Rab cascade²⁸. We speculate that Vps21, potentially along with other yet unidentified factors, needs to interact with MC1 to ensure proper activation.

The enzymatic activity of MC1 is mediated entirely by a core complex consisting of the longin domains of Mon1 and Ccz1 plus an extra N-terminal helix of Mon1. The globular shape of both the longin dimer and complete complex do not allow to fit the crystal structure of the core unambiguously into the EM density of full-length MC1. The comparison of the full complex with MC1core at 17 Å resolution shows that the core, which only represents a third of the total complex, could fit into the EM reconstruction at various positions (Supplementary Fig. 4c). The catalytic efficiency k_{cat}/K_M of $\sim 2.1 \times 10^4 \text{ M}^{-1} \text{ s}^{-1}$ we measured for MC1 is comparable to that of other RabGEFs and most similar to TRAPP (k_{cat}/K_M $1.6 \times 10^4 \text{ M}^{-1} \text{ s}^{-1}$; ref. 9) or DENND1 (k_{cat}/K_M $2.3 \times 10^4 \text{ M}^{-1} \text{ s}^{-1}$; ref. 4). For yeast MC1 a k_{cat}/K_M of $1.6 \times 10^3 \text{ M}^{-1} \text{ s}^{-1}$ has been reported¹⁷. We rationalize the 10-fold difference with the poor stability of the complex from *S. cerevisiae* that likely led to an underestimation of ScMC1 activity.

The utilization of a longin heterodimer by MC1 as GEF module is reminiscent of TRAPP. Longin domains are commonly found as interactors, but the interaction interfaces are hardly conserved¹⁸. Nevertheless, binding of MC1 to Ypt7 and TRAPP to Ypt1 occurs in an identical orientation to a surface formed jointly by the helices $\alpha 1$ from both longin domains. This argues for a divergent evolutionary relationship between MC1 and TRAPP in contrast to other examples described so far. However, besides the obvious difference in the total number of subunits, MC1 and TRAPP are also distinct in the mechanism by which they mediate nucleotide exchange. To promote nucleotide exchange, TRAPP uses in addition to the Trs23/Bet5 longin dimer the C-terminal tail of a third subunit Bet3 as a wedge that is inserted into the nucleotide-binding pocket of the GTPase. The absence of this feature in MC1 is compensated by a more extensive interaction interface between longin domains and GTPase ($1,760 \text{ \AA}^2$ for MC1 versus $1,070 \text{ \AA}^2$ for TRAPP), which is mediated by two conserved structural features in Mon1: the additional N-terminal helix $\alpha 0$ and the elbow loop with an SxRx motif.

The interaction with MC1 locks the switch I region of Ypt7 in a conformation incompatible with nucleotide binding. Switch I is entirely structured and well defined in our crystal structure, revealing two complimentary mechanisms that stimulate nucleotide exchange (Fig. 6). First, F33 of Ypt7 is fixed in a hydrophobic pocket on Mon1 and is thus not available for interaction with the guanosine base of GTPase-bound nucleotide. Aromatic residues are conserved at this position

of Rab switch I regions, and their extraction from the nucleotide-binding pocket was proposed to represent a common theme in the mechanism of GEFs⁶. In contrast, we find that MC1 can still promote nucleotide exchange with a catalytic efficiency comparable to wild type, indicating that removal of F33 does not play a key role in the catalytic mechanism of MC1. Unexpectedly, the MC1 stabilized conformation of switch I also leads to insertion of K38 of Ypt7 into the nucleotide pocket, thus occupying with its positively charged terminal amine group the binding site of the Mg^{2+} cofactor ion. This position in switch I is variable within the Rab family, but strictly conserved in the Rab7 subfamily (Supplementary Fig. 7b), which is substrate for MC1. This supports its essential role in the GEF mechanism. Furthermore, the necessity for a lysine in switch I ensures specificity of MC1 in addition to recognition requirements as we observed them for Vps21.

The BLOC3 complex (Hps1–Hps4) has been identified in mammalian cells as a homologous complex to MC1 with different substrate specificity for Rab32/38 instead of Rab7 (ref. 13). Both subunits contain a predicted longin domain in their N terminus, but lack the additional helix $\alpha 0$. It is to be expected that Hps1 and Hps4 also form a catalytic longin dimer. Interestingly, both Rab32 and Rab38 contain an arginine residue at the equivalent position to K38 in Ypt7 (Supplementary Fig. 7b). Thus, BLOC3 might utilize the same mechanism as MC1 to catalyse nucleotide exchange.

Methods

Cloning of CtMC1 and Rab GTPases. To identify the heterodimeric MC1 GEF complex in the thermophilic fungus *C. thermophilum*, DELTA-BLAST searches (www.ncbi.nlm.nih.gov/BLAST/) were performed using the protein sequences of the *S. cerevisiae* MC1 complex (ScMon1: UniProt entry P53129, ScCcz1: UniProt entry P38273) as queries. Homologues of Mon1 and Ccz1 could be found with sequence identities of 29% (NCBI accession code XP_006697030, E value: $6e^{-53}$) and 15% (XP_006695440, E value: $1e^{-6}$), respectively. Constructs of CtMon1 and CtCcz1 were amplified from codon-optimized synthetic genes (GenScript, Supplementary Table 2). PCR products (for a detailed primer list see Supplementary Table 3) were subcloned into modified expression vectors pCDF-6P and pET-28a-HS, yielding N-terminally tagged GST-CtMon1 and His₆-SUMO-CtCcz1 fusion proteins, respectively. CtYpt7 (XP_006696898) as well as CtVps21 (XP_006697636) were amplified from *C. thermophilum* cDNA (courtesy E. Hurt) and subsequently subcloned into the modified expression vectors pCDF-6P and pLinkG, respectively. The latter encodes an N terminally glutathione S-transferase (GST) fusion protein with an additional TEV cleavage site. The plasmid pLinkG-CtYpt7 was used for co-expression of the trimeric CtMC1–Ypt7 complex. Mutants of CtMon1 and CtCcz1 as well as CtYpt7 were generated with the Q5 Site-Directed Mutagenesis Kit (NEB) and subsequently verified by sequencing (Seqlab).

Co-expression and protein purification of the CtMC1 complex. *Escherichia coli* Rosetta (DE3) cells (Novagen) were transformed by electroporation with both plasmids pCDF-6P-CtMon1 and pET-28a-HS-CtCcz1. Cells were grown in LB medium to OD₆₀₀ 0.6. After cold shock, co-expression was triggered by 0.25 mM isopropyl- β -D-thiogalactoside at 16 °C and cells were harvested after 18 h. Cell pellets were resuspended in buffer I (50 mM NaH₂PO₄, 500 mM NaCl, 5% glycerol, 2 mM dithiothreitol (DTT), pH 7.5) and cell disruption was performed in the presence of lysozyme, DNase I and protease inhibitors (Pierce Protease Inhibitor Tablets, EDTA-free, Thermo Fisher Scientific) with a French Press. After centrifugation (39,191g, 30 min, 4 °C), the supernatant was applied on a self-packed glutathione column (Pierce Glutathione Superflow Agarose, Thermo Fisher Scientific). Proteolytic cleavage of expression tags was achieved by overnight incubation at 4 °C with PreScission (GST-CtMon1) and SUMO protease (His₆-SUMO-CtCcz1), respectively. After elution, the CtMC1 complex was concentrated with an Amicon Ultra concentrator (Merck Millipore). As a final polishing step, size exclusion chromatography was performed to separate the heterodimeric GEF complex from proteases. For EM studies, CtMC1 in buffer II (10 mM HEPES, 200 mM NaCl, 0.5 mM TCEP, pH 7.3) was used, whereas the GEF activity assay was performed in buffer III (10 mM HEPES, 200 mM NaCl, 1 mM MgCl₂, 5% glycerol, 0.5 mM TCEP, pH 7.3). The CtMC1core complex was purified according to the protocol, but elution was performed with 20 mM GSH in buffer I supplemented with 10 mM DTT to retain both expression tags.

To obtain the trimeric CtMC1–Ypt7 complex *Escherichia coli* Rosetta (DE3) cells were transformed by electroporation with latter plasmids as well as pLinkG-CtYpt7–N125I. Triple co-expression and cell disruption was performed

as described for the CtMC1 complex. The protein purification protocol was modified such that after 2 h of PreScission and SUMO protease treatment GSH beads were washed with buffer I to remove all unbound proteins, namely proteases and excess CtMC1. GSH beads with remaining trimeric CtMC1–Ypt7–N125I complex and CrYpt7–N125I alone were incubated with TEV protease at 4 °C overnight and subsequently eluted. For protein crystallization, gel filtration was performed in buffer IV (25 mM HEPES, 300 mM NaCl, 5% glycerol, 1 mM TCEP, pH 7.5) to separate the trimeric CtMC1–Ypt7 complex from TEV protease as well as CrYpt7–N125I and yielded >95% pure protein.

For the purification of CrYpt7 and CrVps21 *E. coli* Rosetta (DE3) cells were chemically transformed with the expression plasmid pCDF-6P–CrYpt7 and pCDF-6P–CrVps21, respectively. After inoculation, cells were grown in terrific broth medium at 25 °C for 24 h and gene expression was controlled by autoinduction. Both Rab GTPases were purified according to the protocol of the CtMC1 complex with the exception that only PreScission protease was used for proteolytic cleavage of the expression tag. Gel filtration was performed in buffer III.

Expression and purification of all mutants and their complexes were performed as described above.

Electron microscopy. Four microlitres of each sample were adsorbed for 2 min at 25 °C on glow-discharged carbon-coated copper grids. The grids were washed twice with the appropriate purification buffer and negatively stained with 0.75% uranyl formate. Samples were imaged on a JEOL JEM-1400 equipped with a LaB₆ cathode operated at 120 kV. Images were recorded on a 4k × 4k charge-coupled device camera F416 (TVIPS) using minimal dose conditions. After manual selection of the single particles using EMAN2 (ref. 38), reference-free and reference-based alignment as well as K-means and ISAC classifications were performed using SPARX³⁹. In total, 22,165 particles were aligned and classified into 100 classes. These ISAC classes provided the templates for *ab initio* 3D structure determination with svxipr (SPARX). The initial model was subsequently refined using the raw single particles. The resolution of the final reconstruction, estimated using a Fourier shell correlation criterion of 0.5, was calculated to be ~17 Å (Supplementary Fig. 1e).

GEF activity assay. Purified CrYpt7 and CrVps21 were loaded with MANT–GDP (Jena Bioscience) in the presence of 20 mM EDTA and 1.5 molar excess of fluorescent nucleotide at 4 °C overnight. Loading reaction was quenched by the addition of MgCl₂ to 25 mM and the resulting Rab GTPase–MANT–GDP complex purified via size exclusion chromatography in buffer III. For the GEF activity assay, 2.0 μM Rab GTPase–MANT–GDP complex were pre-incubated with 2.0, 1.5, 1.0, 0.5 and 0 μM of respective CtMC1 complex. After baseline stabilization, the nucleotide exchange reaction was triggered by the addition of 0.1 mM GTP. Substitution of MANT–GDP for GTP upon GEF activity was monitored by the decrease in fluorescence emission at λ_{em} 450 nm (λ_{ex} 354 nm) in intervals of 60 s at 25 °C. Data were fitted against a first-order exponential decay ($y = y_0 + A \exp(-x/t)$) and k_{obs} (s⁻¹) was determined by $k_{\text{obs}} = 1/t$. Subsequently, k_{obs} was plotted against the CtMC1 concentration and k_{cat}/K_M (M⁻¹s⁻¹) was determined as the slope of the linear fit $y = A \cdot x + B$. The measured k_{obs} of the intrinsic nucleotide exchange was used as data point for 0 μM CtMC1 concentration.

Protein crystallization and structure determination. An initial crystallization screening was performed with commercially available crystallization screens (Molecular Dimensions) and a Gryphon robot system (Art Robbins Instruments) in a 96-well format. First crystals were obtained at 12 °C and a protein concentration of 6.3 mg ml⁻¹ after several weeks in a crystallization condition containing 0.2 M sodium chloride, 0.1 M HEPES sodium salt, pH 6.5 and 10% PEG 4000. Subsequent microseed matrix screening⁴⁰ identified a reliable crystallization condition containing 0.15 M ammonium sulfate, 0.1 M MES, pH 6.0 and 15% PEG 4000. Optimization was done in a 24-well format using the hanging-drop vapour diffusion method at 12 °C and a protein concentration of 7.3 mg ml⁻¹. Native protein crystals for data collection were obtained after a few days using the streak seeding technique⁴¹ in latter crystallization condition but with 18% PEG 4000 and supplemented with 25% glycerol. Native crystals were directly flash-cooled in liquid nitrogen. To obtain phase information, selenomethionine-substituted protein was produced⁴², purified and crystallized in the native crystallization condition supplemented with 15% glycerol using the streak seeding technique with seeds from native crystals. Selenium-derivative crystals were flash-cooled in liquid nitrogen in latter condition with 17% PEG 4000 and with 25% glycerol as cryoprotectant.

Native as well as anomalous X-ray data were collected from single crystals at 100 K at beamline P13, EMBL Hamburg, Germany. Diffraction data were processed using XDSAPP⁴³. Initial phases were determined by single-wavelength anomalous dispersion at the selenium peak energy using phenix.autosol^{44,45}, followed by density modification and automated model building using phenix.autobuild^{44,46}. Since the diffraction pattern showed strong anisotropy, processed native data were analysed through the UCLA Diffraction Anisotropy Server⁴⁷ (<http://services.mbi.ucla.edu/anisoscalle>) and ellipsoidally truncated to 2.9, 2.5 and 2.5 Å along a*, b* and c*, respectively. After anisotropic scaling, a

negative isotropic B-factor of -22.01 Å² was applied to correct data for further refinement. Iterative cycles of model building in COOT⁴⁸ and refinement at 2.5 Å using phenix.refine^{44,49} led to a final model with R_{factors} of R_{work} 20.0% and R_{free} 24.1%. Data collection and refinement statistics are summarized in Table 1. Coordinates and structure factors have been deposited in the Protein Data Bank (pdb code: 5LDD). Protein interfaces and interactions were calculated using PISA⁵¹ (<http://www.ebi.ac.uk/pdbe/pisa/>). PYMOL was used for graphical analysis and visualization³⁰.

Fluorescence microscopy. Microscopic analyses of yeast cells¹⁷ were performed as described in Cabrera *et al.*¹⁷ Cells were grown in YPD overnight, diluted to OD₆₀₀ of 0.25 in the morning and grown until an OD₆₀₀ of ~1. Cells were collected by centrifugation (5,000g, 3 min, 20 °C) and washed in synthetic media. For staining of the vacuole by FM4-64, cells were incubated in synthetic media containing 30 μM FM4-64 for 30 min at 30 °C, washed twice in fresh media and incubated another 60 min in media without dye. Images were acquired directly afterwards using a Delta Vision Elite (GE Healthcare) equipped with an inverted microscope (model IX-71; Olympus), an UAPON × 100 (1.49 numerical aperture (NA)) oil immersion or PLAPON × 60 (1.42 NA) oil immersion objective, an InsightSSI light source (Applied Precision) and an sCMOS camera (PCO). Data were processed using ImageJ 2.0.0.

Data availability. The coordinates and structure factors of the CtMC1core–Ypt7 complex have been deposited in the Protein Data Bank under the accession codes 5LDD. All additional experimental data are available from the corresponding author on reasonable request. The UniProt accession codes P53129 and P38273 and the NCBI accession codes XP_006697030, XP_006695440, XP_006696898 and XP_006697636 were used in this study.

References

- Jahn, R. & Scheller, R. H. SNAREs—engines for membrane fusion. *Nat. Rev. Mol. Cell Biol.* **7**, 631–643 (2006).
- Stenmark, H. Rab GTPases as coordinators of vesicle traffic. *Nat. Rev. Mol. Cell Biol.* **10**, 513–525 (2009).
- Pan, X., Eathiraj, S., Munson, M. & Lambright, D. G. TBC-domain GAPs for Rab GTPases accelerate GTP hydrolysis by a dual-finger mechanism. *Nature* **442**, 303–306 (2006).
- Langemeyer, L. *et al.* Diversity and plasticity in Rab GTPase nucleotide release mechanism has consequences for Rab activation and inactivation. *Elife* **3**, e01623 (2014).
- Ishida, M., Oguchi, M. E. & Fukuda, M. Multiple types of guanine nucleotide exchange factors (GEFs) for Rab small GTPases. *Cell Struct. Funct.* **41**, 61–79 (2016).
- Wu, X. *et al.* Insights regarding guanine nucleotide exchange from the structure of a DENN-domain protein complexed with its Rab GTPase substrate. *Proc. Natl Acad. Sci. USA* **108**, 18672–18677 (2011).
- Delprato, A., Merithew, E. & Lambright, D. G. Structure, exchange determinants, and family-wide rab specificity of the tandem helical bundle and Vps9 domains of Rabex-5. *Cell* **118**, 607–617 (2004).
- Delprato, A. & Lambright, D. G. Structural basis for Rab GTPase activation by VPS9 domain exchange factors. *Nat. Struct. Mol. Biol.* **14**, 406–412 (2007).
- Cai, Y. *et al.* The structural basis for activation of the Rab Ypt1p by the TRAPP membrane-tethering complexes. *Cell* **133**, 1202–1213 (2008).
- Dong, G., Medkova, M., Novick, P. & Reinisch, K. M. A catalytic coiled coil: structural insights into the activation of the Rab GTPase Sec4p by Sec2p. *Mol. Cell* **25**, 455–462 (2007).
- Sato, Y., Fukui, S., Ishitani, R. & Nureki, O. Crystal structure of the Sec4p:Sec2p complex in the nucleotide exchanging intermediate state. *Proc. Natl Acad. Sci. USA* **104**, 8305–8310 (2007).
- Nordmann, M. *et al.* The Mon1–Ccz1 complex is the GEF of the late endosomal Rab7 homolog Ypt7. *Curr. Biol.* **20**, 1654–1659 (2010).
- Gerondopoulos, A., Langemeyer, L., Liang, J.-R., Linford, A. & Barr, F. A. BLOC-3 mutated in Hermansky-Pudlak syndrome is a Rab32/38 guanine nucleotide exchange factor. *Curr. Biol.* **22**, 2135–2139 (2012).
- Poteryaev, D., Fares, H., Bowerman, B. & Spang, A. *Caenorhabditis elegans* SAND-1 is essential for RAB-7 function in endosomal traffic. *EMBO J.* **26**, 301–312 (2007).
- Sánchez-Guio, I. *et al.* Hermansky-Pudlak syndrome. Overview of clinical and molecular features and case report of a new HPS-1 variant. *Hamostaseologie* **34**, 301–309 (2014).
- Rana, M., Lachmann, J. & Ungermann, C. Identification of a Rab GTPase-activating protein cascade that controls recycling of the Rab5 GTPase Vps21 from the vacuole. *Mol. Cell Biol.* **26**, 2535–2549 (2015).
- Cabrera, M. *et al.* The Mon1–Ccz1 GEF activates the Rab7 GTPase Ypt7 via a longin-fold-Rab interface and association with PI3P-positive membranes. *J. Cell Sci.* **127**, 1043–1051 (2014).

18. Levine, T. P. *et al.* Discovery of new Longin and Roadblock domains that form platforms for small GTPases in regulator and TRAPP-II. *Small GTPases* **4**, 62–69 (2013).
19. Cui, Y. *et al.* Activation of the Rab7 GTPase by the MON1-CCZ1 complex is essential for PVC-to-vacuole trafficking and plant growth in *Arabidopsis*. *Plant Cell* **26**, 2080–2097 (2014).
20. Kucharczyk, R., Kierzek, A. M., Slonimski, P. P. & Rytka, J. The Ccz1 protein interacts with Ypt7 GTPase during fusion of multiple transport intermediates with the vacuole in *S. cerevisiae*. *J. Cell Sci.* **114**, 3137–3145 (2001).
21. Li, Y. *et al.* FgMon1, a guanine nucleotide exchange factor of FgRab7, is important for vacuole fusion, autophagy and plant infection in *Fusarium graminearum*. *Sci. Rep.* **5**, 18101 (2015).
22. Singh, M. K. *et al.* Protein delivery to vacuole requires SAND protein-dependent Rab GTPase conversion for MVB-vacuole fusion. *Curr. Biol.* **24**, 1383–1389 (2014).
23. Wang, C.-W., Stromhaug, P. E., Shima, J. & Klionsky, D. J. The Ccz1-Mon1 protein complex is required for the late step of multiple vacuole delivery pathways. *J. Biol. Chem.* **277**, 47917–47927 (2002).
24. Yousefian, J. *et al.* Dmon1 controls recruitment of Rab7 to maturing endosomes in *Drosophila*. *J. Cell Sci.* **126**, 1583–1594 (2013).
25. Balderhaar, H. J. & Ungermann, C. CORVET and HOPS tethering complexes - coordinators of endosome and lysosome fusion. *J. Cell Sci.* **126**, 1307–1316 (2013).
26. Huotari, J. & Helenius, A. Endosome maturation. *EMBO J.* **30**, 3481–3500 (2011).
27. Cabrera, M., Engelbrecht-Vandré, S. & Ungermann, C. Function of the Mon1-Ccz1 complex on endosomes. *Small GTPases* **5**, 1–3 (2014).
28. Poteryaev, D., Datta, S., Ackema, K., Zerial, M. & Spang, A. Identification of the switch in early-to-late endosome transition. *Cell* **141**, 497–508 (2010).
29. Amlacher, S. *et al.* Insight into structure and assembly of the nuclear pore complex by utilizing the genome of a eukaryotic thermophile. *Cell* **146**, 277–289 (2011).
30. DeLano, W. L. *The PyMOL Molecular Graphics System* (DeLano Sci. LLC, 2003).
31. Krissinel, E. & Henrick, K. Inference of macromolecular assemblies from crystalline state. *J. Mol. Biol.* **372**, 774–797 (2007).
32. Cai, H. *et al.* TRAPPI tethers COPII vesicles by binding the coat subunit Sec23. *Nature* **445**, 941–944 (2007).
33. Schoebel, S., Oesterlin, L. K., Blankenfeldt, W., Goody, R. S. & Itzen, A. RabGDI displacement by DrrA from *Legionella* is a consequence of its guanine nucleotide exchange activity. *Mol. Cell* **36**, 1060–1072 (2009).
34. Buchwald, G. *et al.* Structural basis for the reversible activation of a Rho protein by the bacterial toxin SopE. *EMBO J.* **21**, 3286–3295 (2002).
35. Constantinescu, A.-T. *et al.* Rab-subfamily-specific regions of Ypt7p are structurally different from other RabGTPases. *Structure* **10**, 569–579 (2002).
36. Sot, B., Behrmann, E., Raunser, S. & Wittinghofer, A. Ras GTPase activating (RasGAP) activity of the dual specificity GAP protein Rasal requires colocalization and C2 domain binding to lipid membranes. *Proc. Natl Acad. Sci. USA* **110**, 111–116 (2013).
37. Krauss, M. & Haucke, V. Phosphoinositide-metabolizing enzymes at the interface between membrane traffic and cell signalling. *EMBO Rep.* **8**, 241–246 (2007).
38. Tang, G. *et al.* EMAN2: An extensible image processing suite for electron microscopy. *J. Struct. Biol.* **157**, 38–46 (2007).
39. Hohn, M. *et al.* SPARX, a new environment for Cryo-EM image processing. *J. Struct. Biol.* **157**, 47–55 (2007).
40. D’Arcy, A., Villard, F. & Marsh, M. An automated microseed matrix-screening method for protein crystallization. *Acta Crystallogr. D Biol. Crystallogr.* **63**, 550–554 (2007).
41. Bergfors, T. Seeds to crystals. *J. Struct. Biol.* **142**, 66–76 (2003).
42. Doublé, S. [29] Preparation of selenomethionyl proteins for phase determination. *Methods Enzymol.* **276**, 523–530 (1997).
43. Krug, M., Weiss, M. S., Heinemann, U. & Mueller, U. XDSAPP: A graphical user interface for the convenient processing of diffraction data using XDS. *J. Appl. Crystallogr.* **45**, 568–572 (2012).
44. Adams, P. D. *et al.* PHENIX: a comprehensive Python-based system for macromolecular structure solution. *Acta Crystallogr. D Biol. Crystallogr.* **66**, 213–221 (2010).
45. Terwilliger, T. C. *et al.* Decision-making in structure solution using Bayesian estimates of map quality: the PHENIX AutoSol wizard. *Acta Crystallogr. D Biol. Crystallogr.* **65**, 582–601 (2009).
46. Terwilliger, T. C. *et al.* Iterative model building, structure refinement and density modification with the PHENIX AutoBuild wizard. *Acta Crystallogr. D Biol. Crystallogr.* **64**, 61–69 (2008).
47. Strong, M. *et al.* Toward the structural genomics of complexes: crystal structure of a PE/PPE protein complex from *Mycobacterium tuberculosis*. *Proc. Natl Acad. Sci. USA* **103**, 8060–8065 (2006).
48. Emsley, P., Lohkamp, B., Scott, W. G. & Cowtan, K. Features and development of Coot. *Acta Crystallogr. D Biol. Crystallogr.* **66**, 486–501 (2010).
49. Afonine, P. V. *et al.* Towards automated crystallographic structure refinement with *phenix.refine*. *Acta Crystallogr. D Biol. Crystallogr.* **68**, 352–367 (2012).
50. Karplus, P. A. & Diederichs, K. Linking crystallographic model and data quality. *Science* **336**, 1030–1033 (2012).

Acknowledgements

We acknowledge the Helmholtz-Zentrum Berlin for provision of synchrotron radiation beamtime at beamline MX14.1 & MX14.3 of BESSY II and would like to thank Uwe Müller for assistance. We are grateful to Johanna Kallio, Michele Cianci and the staff of the EMBL beamline P13 at the PETRA III synchrotron for excellent support during data collection and Siegfried Engelbrecht-Vandré for helpful discussions. We are grateful to Eric Herrmann for technical assistance. L.L. was supported in part by an incentive award of the Department of Biology/Chemistry in Osnabrück. This study was supported by grants from DFG to D.K. (KU2531/2-1, SFB 944-P17), C.U. (SFB944-P11) and S.R. (RA 1781/2-3).

Author contributions

S.K., C.U. and D.K. conceived the study and designed the biochemical and cell biology experiments; S.K. purified and crystallized proteins, performed kinetic analysis and solved the structure with help from S.S. and D.K.; A.K. and S.R. designed, performed and analysed the EM experiments; L.L. performed cell biology experiments; S.K. and D.K. wrote the manuscript; all authors contributed to discussion and approved the final manuscript.

Additional information

Supplementary Information accompanies this paper at <http://www.nature.com/naturecommunications>

Competing financial interests: The authors declare no competing financial interests.

Reprints and permission information is available online at <http://npg.nature.com/reprintsandpermissions/>

How to cite this article: Kiontke, S. *et al.* Architecture and mechanism of the late endosomal Rab7-like Ypt7 guanine nucleotide exchange factor complex Mon1-Ccz1. *Nat. Commun.* **8**, 14034 doi: 10.1038/ncomms14034 (2017).

Publisher’s note: Springer Nature remains neutral with regard to jurisdictional claims in published maps and institutional affiliations.



This work is licensed under a Creative Commons Attribution 4.0 International License. The images or other third party material in this article are included in the article’s Creative Commons license, unless indicated otherwise in the credit line; if the material is not included under the Creative Commons license, users will need to obtain permission from the license holder to reproduce the material. To view a copy of this license, visit <http://creativecommons.org/licenses/by/4.0/>

© The Author(s) 2017