

RESEARCH

Open Access



# Epidemiology of *Mansonella perstans* in the middle belt of Ghana

Linda Batsa Debrah<sup>1,7\*</sup>, Norman Nausch<sup>2</sup>, Vera Serwaa Opoku<sup>1</sup>, Wellington Owusu<sup>1</sup>, Yusif Mubarik<sup>1</sup>, Daniel Antwi Berko<sup>1</sup>, Samuel Wanji<sup>6</sup>, Laura E. Layland<sup>3</sup>, Achim Hoerauf<sup>3</sup>, Marc Jacobsen<sup>2</sup>, Alexander Yaw Debrah<sup>4</sup> and Richard O. Phillips<sup>5</sup>

## Abstract

**Background:** Mansonellosis was first reported in Ghana by Awadzi in the 1990s. Co-infections of *Mansonella perstans* have also been reported in a small cohort of patients with Buruli ulcer and their contacts. However, no study has assessed the exact prevalence of the disease in a larger study population. This study therefore aimed to find out the prevalence of *M. perstans* infection in some districts in Ghana and to determine the diversity of *Culicoides* that could be potential vectors for transmission.

**Methods:** From each participant screened in the Asante Akim North (Ashanti Region), Sene West and Atebubu Amantin (Brong Ahafo Region) districts, a total of 70 µl of finger prick blood was collected for assessment of *M. perstans* microfilariae. Centre for Disease Control (CDC) light traps as well as the Human Landing Catch (HLC) method were used to assess the species diversity of *Culicoides* present in the study communities.

**Results:** From 2,247 participants, an overall prevalence of 32% was recorded although up to 75% prevalence was demonstrated in some of the communities. *Culicoides inornatipennis* was the only species of *Culicoides* caught with the HLC method. By contrast, *C. imicola* (47%), *C. neavei* (25%) and *C. schultzei* (15%) were caught by the CDC light trap method. A wide diversity of other *Culicoides* spp. was also identified but correlation was only found between the prevalence of *C. inornatipennis* and *M. perstans* during the dry season.

**Conclusions:** Here we demonstrate for the first time that *M. perstans* is highly prevalent in three districts in Ghana. We found a wide spectrum of *Culicoides* spp. *Culicoides inornatipennis* was the most anthropophilic and is therefore likely to be the species responsible for transmission of infection but formal proof has yet to be obtained.

**Trial registration:** NCT02281643. Registered October 26, 2014. 'Retrospectively registered'. Trial Registry: ClinicalTrials.gov.

**Keywords:** Mansonellosis, *Mansonella perstans*, *Culicoides*, Microfilariae, Epidemiology

## Background

Amongst the known human filarial infections that parasitize man, mansonellosis is the least studied even though more than 100 million individuals are estimated to be infected [1]. Prevalence of mansonellosis has mainly been reported in sub-Saharan Africa and parts of Central and South America with about 600 million

individuals being at risk of infection in about 33 countries [1, 2]. To date, mansonellosis in man is elicited by three known agents: *M. perstans*, *M. streptocerca* and *M. ozzardi*. These agents vary in morphological and anatomical features as well as in their geographical locations [3]. Whereas *M. perstans* and *M. streptocerca* occur mainly in western, eastern and central Africa, *M. ozzardi* is only prevalent in South America [3].

As with other filariae, *M. perstans* requires a vector and is transmitted by female flies of the genus *Culicoides* (biting midges). The overall life-cycle is similar to those of other nematode infections such as onchocerciasis, lymphatic filariasis and loiasis where humans are the

\* Correspondence: lindrousy@yahoo.com

<sup>1</sup>Kumasi Centre for Collaborative Research into Tropical Medicine (KCCR), Kumasi, Ghana

<sup>7</sup>Department of Clinical Microbiology, Kwame Nkrumah University of Science and Technology, Kumasi, Ghana

Full list of author information is available at the end of the article

definitive host. In brief, infective larvae are introduced into the host during a blood meal and develop into adult worms that reside in the coelomic cavity, peritoneal and pleural cavities as well as mesenteric perirenal and retroperitoneal tissues [4]. They produce thousands of unshathed microfilariae (MF) that appear in the blood stream with no particular periodicity and are taken up by another biting midge for transmission to continue [1]. The exact lifespan of *M. perstans* adult worms has not been deciphered although there is a report of the presence of MF in the blood of a person who left the endemic community 10 years earlier [5].

Mansonellosis has previously been thought of as non-pathogenic [1, 6] but there have been associations of some clinical manifestations with MF release, such as eosinophilia and ocular disorders [7–9]. Other studies have implicated *M. perstans* in the disease progression of clinical malaria [10] and co-infections have been shown to influence infant morbidity in Uganda [11–13]. In Ghana, *M. perstans* was detected in the 1990s [14] but its relevance was not documented until its association with *Mycobacterium ulcerans* was noted in Buruli ulcer endemic communities in the Asante Akim North District [15]. Epidemiological surveys on *M. perstans* prevalence in Ghana are lacking and the distribution of different *Culicoides* species serving as potential vectors is not known.

Thus given the paucity of information regarding *M. perstans* prevalence in Ghana and also the existence of different species of vector(s) involved in the transmission of *M. perstans* in Africa [16–18], we carried out epidemiological studies of *M. perstans* to assess the burden of infection and to further identify the diversity of *Culicoides* species that are attracted by light and humans.

## Methods

### Study design

*Mansonella perstans* prevalence was determined in 2,247 participants from areas of the Middle Belt of Ghana between July 2014 and September 2015. From the Ashanti Region, eight communities (Sereboso, Nhyieso, Dukusen, Beemu, Bebuso, Ananekrom, Afrisere and Abutantri) were selected in the Ashanti Akim North District based on previous reports of the disease [15]. From the Brong Ahafo region, five communities (Akyere-made Battor, Drobe, Kofi Gyan, Lemu and Shafa) in the Sene West and five communities (Duabone No. 1, Duabone No. 2, Garadima, Issifu Akuraa and Seneso) in the Atebubu-Amantin Districts were also selected due to considerable migration of people from the Ashanti Akim North District to these communities. These three districts are in tropical rainforest areas with similar ecological characteristics. Entomological surveys were

also performed in communities in the Ashanti Akim North District to determine diversity of *Culicoides* species that are attracted to light and/or humans (Fig. 1).

General demographic information such as age, sex, and history of previous Mass Drug Administration (MDA) were obtained from the consented participants. A total of 70  $\mu$ l finger pricked blood samples was taken under sterile conditions for parasitological assessment. Entomological assessment of *Culicoides* spp. was carried out during the same period.

### Parasitological examination

#### *Microfilariae assessment by direct finger pricking*

The middle finger of the volunteer's left hand was wiped and massaged simultaneously to ensure adequate blood flow to the tip of the finger. The skin of the tip of the finger was disinfected with 70% alcohol, pricked with a sterile lancet and 20  $\mu$ l of blood pipetted onto a clean-labelled microscope slide. A coverslip was placed on the blood and directly observed under 10 $\times$  objective lens of the light microscope for the presence of motile microfilariae.

#### *Microfilariae assessment by counting chamber technique*

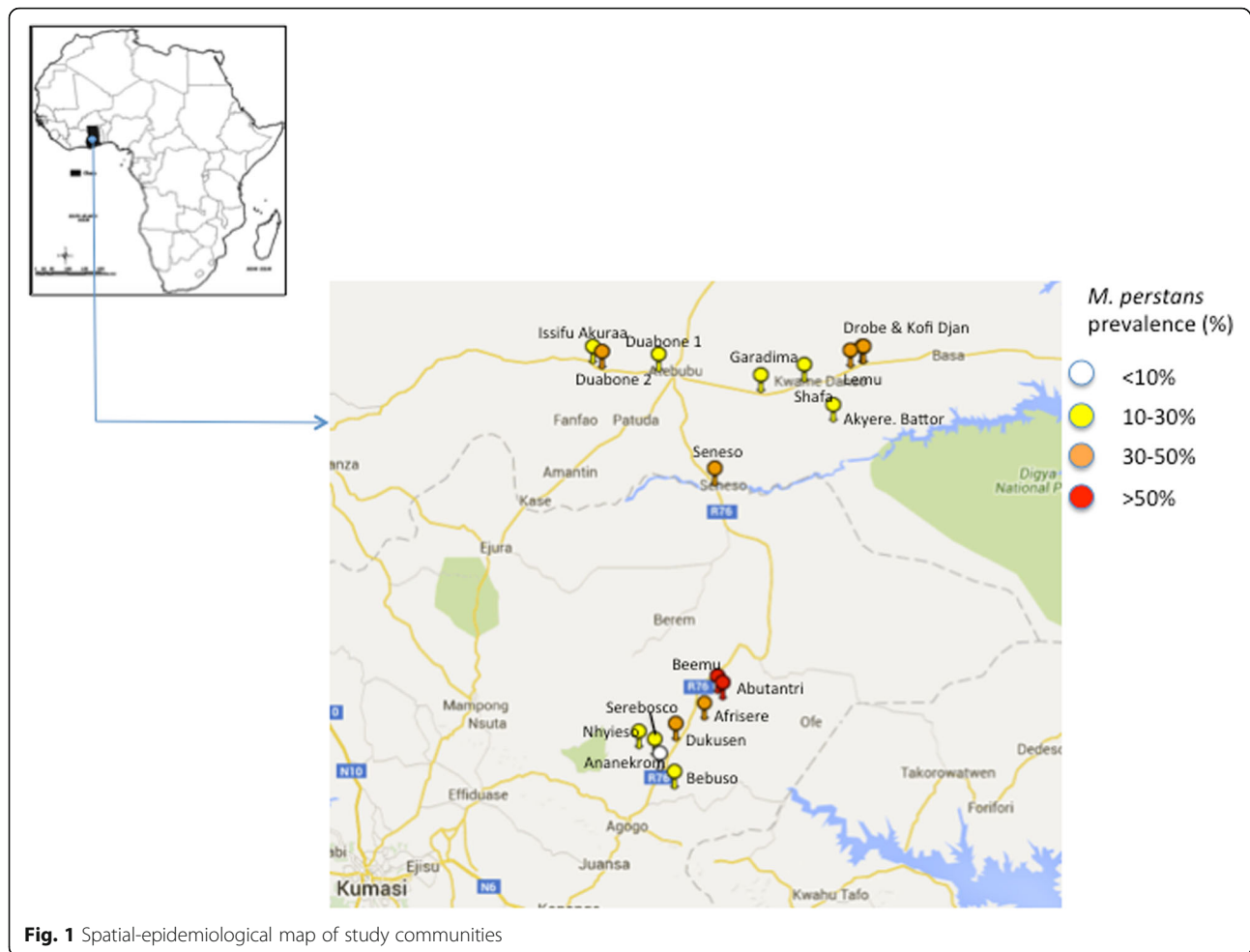
To confirm that the MF identified in the direct finger prick blood were *M. perstans*, 50  $\mu$ l of blood was additionally transferred from the pricked finger into already prepared 1.5 ml Eppendorf tubes containing 950  $\mu$ l of 3% acetic acid and mixed thoroughly to haemolyse the red cells. The solution was poured into the Sedgewick counting chamber ensuring the absence of air bubbles. The presence or absence of *M. perstans* MF was assessed under a light microscope using the 10 $\times$  objective lens. The MF were identified morphologically as *M. perstans* based on the absence of sheath, extension of nuclei to the bluntly rounded tip and their small size (usually about 200  $\mu$ m).

### Entomological survey

Seasonal collections of *Culicoides* species were carried out from June to September 2014 for the wet season and November 2014 to February 2015 for the dry season, which are the two main seasonal variations in Ghana. *Culicoides* species were collected during the first week of each month.

### Light trap collections

Centre for Disease Control's (CDC) New Standard Miniature light traps from John W. Hock Company, Florida, USA, were mounted in proximity to both breeding sites and human habitations. Each study community was divided into four parts and a light trap mounted in each part for the trapping of the midges in the dry and wet seasons. The same collection sites were used at both



**Fig. 1** Spatial-epidemiological map of study communities

sampling times. Attracted by UV light emitted by the trap, *Culicoides* spp. and other flies were trapped in a Petri plate containing 80% alcohol placed in the suspended trap. Catches were made from 6:00 to 9:00 h for the morning periods and from 16:00 to 17:00 h for the evening periods. The trap catches were removed at the end of the three hours collection and each trap assigned a unique number with respect to its position in the field. An overnight trap was additionally mounted from 18:00 to 6:00 h. The trapped flies were transferred into labelled 50 ml falcon tubes containing 80% alcohol and placed in a cold box for transportation to the laboratory. The number of flies caught by each trap (6:00–9:00 h, 16:00–17:00 h and 18:00–6:00 h) was recorded and the flies identified morphologically [19].

#### Human landing catches

Volunteers from the various communities were given training on how to collect midges using the human landing catch method. They were then deployed to their various communities, and collection of *Culicoides* was supervised by a trained staff member to reduce bias.

Midges were captured daily by 4 trained collectors stationed near human habitations in the study communities. Blood-seeking female midges were collected using locally made aspirators when they were attempting to take a blood meal on the collectors. The catching times were made to coincide with that of the aforementioned light traps. The caught midges were aspirated and stored into labelled transparent plastic cups covered with a fine net and blocked with cotton wool at the base. Midges were knocked-down by freezing for few minutes and then transferred into a labelled eppendorf tube containing 80% ethanol. They were then transported to the laboratory for morphological identification on the species level.

#### Data analysis

Descriptive statistics was used to obtain general descriptive information using the StatView®, Version 5 for Windows. Data were analysed using IBM SPSS statistics software version 22 and  $P$ -values less than 0.05 ( $P < 0.05$ ) considered statistically significant. Prism 6 software was used for plotting the graphs from data generated. Geospatial maps were

created using <http://www.spatial-epidemiology.com>. Mann-Whitney U-tests were carried out for the determination of the differences in demographic information between males and females and Spearman's correlation was used to check for correlation between *M. perstans* prevalence and *Culicoides* abundance.

## Results

### Characteristics of the study populations according to districts

A total of 2,247 participants from 18 communities in Ashanti Akim North District, Atebubu Amantin District and Sene West Districts was screened for the presence of *M. perstans* MF in their blood. Upon comparison of participating districts, there was no significant difference in gender or age distribution with the exception of participants from the Sene West District where the proportion of female volunteers was significantly higher than males (Table 1).

### Prevalence of *M. perstans* infection in study communities

There was statistical significance in microfilarial prevalence between males and females, with the exception of participants from Sene West District. In all three districts, there were associations between the *M. perstans* infection prevalence and age of study participants ( $\chi^2 = 24.3$ ,  $df = 8$ ,  $P = 0.0020$ ;  $\chi^2 = 25.1$ ,  $df = 8$ ,  $P = 0.0015$ ; and  $\chi^2 = 28.3$ ,  $df = 8$ ,  $P = 0.0004$ , respectively). In the Ashanti Akim North District the prevalence increased with age with an exceptionally high prevalence within the 14–19 years age group (Fig. 2a). In Sene West and Atebubu Amantin Districts (Fig. 2b, c) microfilarial prevalence increased from age group 9–13 years until it plateaued from age 20–25 years.

Ashanti Akim North District had the highest overall prevalence of 33% with some communities recording over 70% microfilarial prevalence. In Sene West and Atebubu Amantin Districts the prevalence rates were similar to those of Ashanti Akim North District at 31% (Table 1). Within the various districts the prevalence differed from one community to the other. Communities in the Ashanti Akim North District showed the highest variation with 2% in Ananekrom and 75% in Beemu (Additional file 1: Table S1; Fig. 2d). Sampled areas in the Atebubu Amantin and Sene West Districts were more comparable with *M. perstans* prevalence ranging from 22–41% and 18–46%, respectively (Additional file 1: Table S1; Fig. 2e, f).

Further analysis was carried out for Drobe, a community where participants had received Ivermectin for the treatment of onchocerciasis for more than five years under Mass Drug Administration (MDA) program. MDA had taken place 3 months prior to the present study. From 107 patients screened in that community, 58 (54.2%) had taken part in MDA and of those, 35 individuals were *M. perstans* MF positive. Twenty of 35 (60%) individuals had taken part in MDA for more than three years. As this study did not include MDA treatment as a factor, the impact of MDA on *M. perstans* infection was not evaluated in detail.

Co-infection with *Wuchereria bancrofti* MF was coincidentally identified in five people from Abutantri community in the Ashanti Akim North District. The MF were differentiated by their size and presence of sheath around the MF.

### Entomological findings

From June 2014 to October 2015 an entomological survey to identify diversity of *Culicoides* species in Ashanti

**Table 1** Characterization of volunteers in the study districts

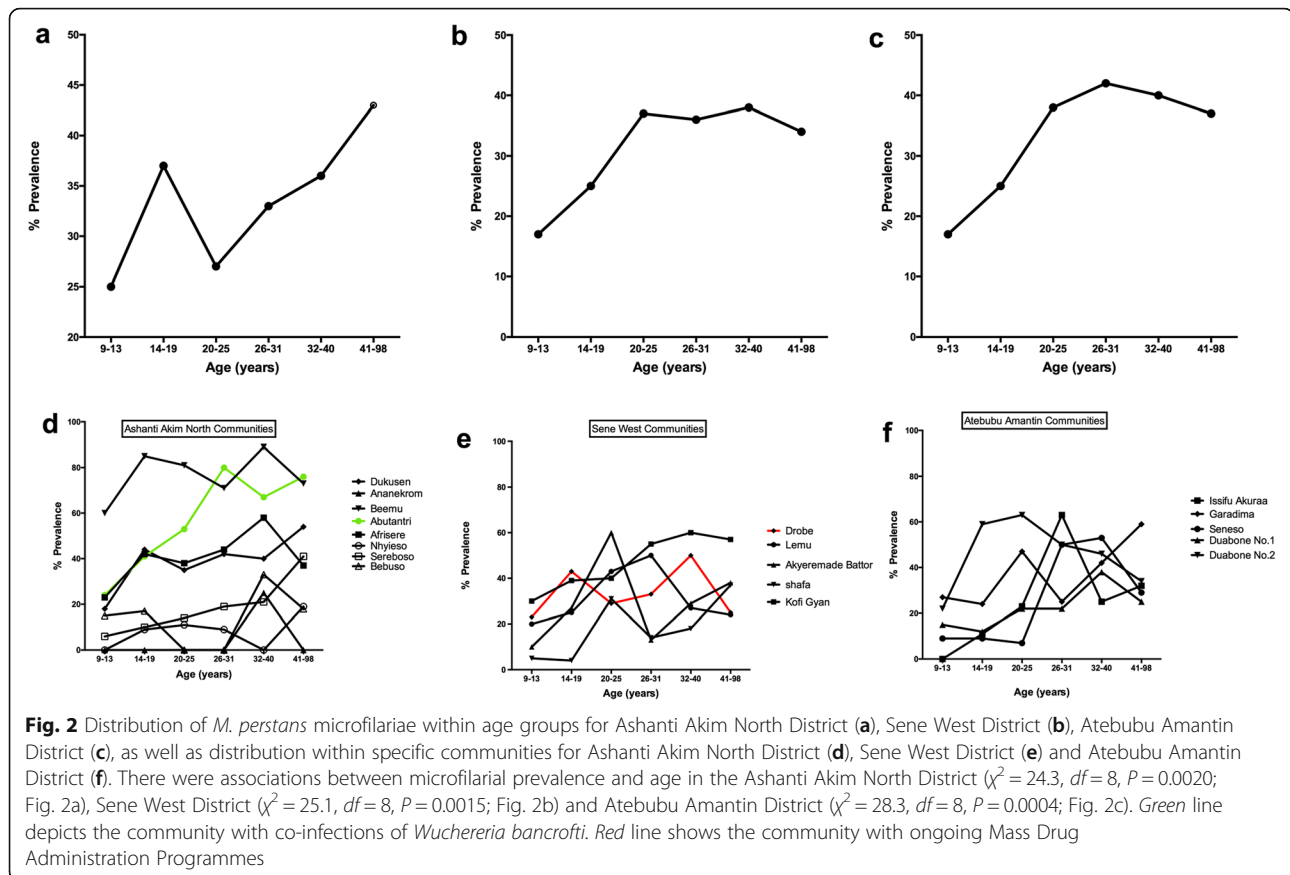
Characteristics	Sex	District				P-value
		Ashanti Akim North	Atebubu Amantin	Sene West	Total	
No. of screened		1,215	508	524	2,247	0.794
	M	601	253	251	1,105	
	F	614	255	273	1,142	
Mean age yrs (range)		27.89 (9–98)	30.69 (9–89)	31.70 (9–92)	29.41 (9–98)	0.788
	M	28.55 (9–98)	32.08 (9–89)	29.87 (9–91) <sup>a</sup>	29.66 (9–98)	
	F	27.24 (9–83)	29.30 (9–85)	33.37 (9–92) <sup>a</sup>	29.17 (9–92)	
MF positive		407	158	160	725	< 0.001
	M	233	89	78 <sup>b</sup>	400	
	F	174	69	82 <sup>b</sup>	325	
MF prevalence (%)		33	31	31		0.391
MDA		No	No	Yes <sup>c</sup>		

<sup>a</sup>Significant differences observed in Sene West District (Mann-Whitney U-Test,  $U = 29,539$ ,  $Z = -2.727$ ,  $P = 0.0064$ )

<sup>b</sup>No significant difference between MF positive and gender (Fisher's exact test,  $P = 0.435$ )

<sup>c</sup>One community in the Sene West District had taken part in the national mass drug administration programme (MDA)

Abbreviations: M, male; F, female, MF, microfilariae



Akim North District was undertaken. A total of 2,207 *Culicoides* species were caught in eight communities in the Ashanti Akim North District in the communities where the screening of volunteers for *M. perstans* was also performed. *Culicoides* species were identified by wing morphology as previously described by Boormann & Glick [19, 20]. Results presented are for the evening (16:00–17:00 h) and overnight (18:00–6:00 h) collections since no *Culicoides* species was caught in the morning either by light trap or HLC method.

In the dry season, 546 *Culicoides* were collected with the CDC light traps and 364 by the HLC method. The overall *Culicoides* species caught in the rainy season was higher (1,297), with 737 flies caught by the CDC light traps and 560 using the HLC method. The evening catch (16:00–17:00 h) for the wet and dry seasons yielded 833 and 631, respectively, whilst the overnight *Culicoides* collection (18:00–6:00 h) yielded 464 and 279 for the wet and dry season respectively (Additional file 2: Table S2 and Additional file 3: Table S3).

Interestingly, *C. inornatipennis* was the only species collected when the HLC method was used irrespective of seasons (wet and dry) or collection times (evening and overnight). This species was recorded in all the communities where the screening was done but was

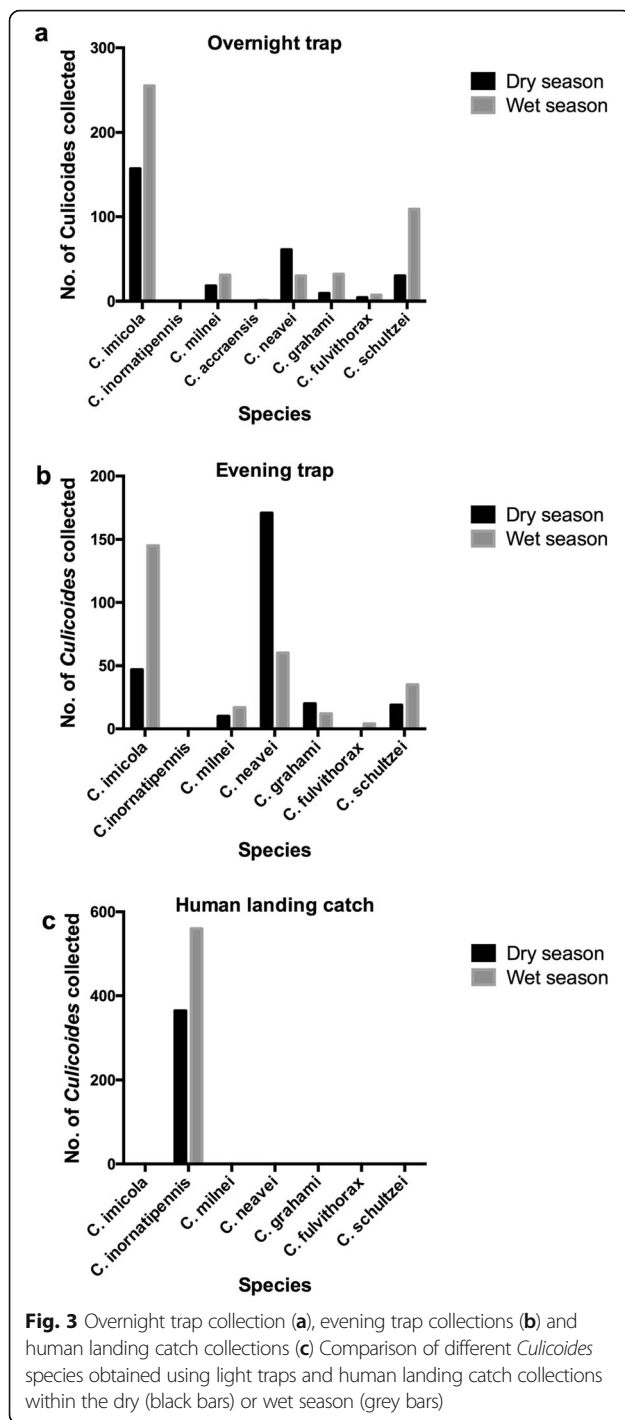
never present in the light trap collections. Figure 3 shows that there was some species diversity in the total trap collection with the highest recorded *Culicoides* species being *C. imicola* (47%) followed by *C. neavei* (25%) then *C. schultzei* (15%) in both seasons at all times. Less than 6% of all the *Culicoides* collected in the evening and overnight collections belonged to other *Culicoides* species (Additional file 2: Table S2 and Additional file 3: Table S3).

These species were also not present in the HLC method. Although the total number of *Culicoides* collected were higher in the wet season when compared with the dry season the species diversity was comparable. A non-parametric correlation analysis revealed a significant correlation between *M. perstans* prevalence and *C. inornatipennis* only in the dry season (Table 2). But there was no correlation among any of the other *Culicoides* species regardless of the season.

## Discussion

Even though *M. perstans* was suspected to be present in Ghana (Awadzi et al. [14]), verification was only ascertained when MF were coincidentally found in stained peripheral blood mononuclear cells (PBMCs) from patients with Buruli ulcer [15]. The overall prevalence of





*M. perstans* in this study was found to be 32%, with a wide variation between 2 and 75% (Additional file 1: Table S1). This is understandable since *M. perstans* distribution is known to vary from areas of low endemicity to areas where almost everyone is infected [11, 21, 22]. This prevalence rate is high compared with several areas in which this infection has been reported [2, 6, 23, 24] even though higher prevalence

rates of over 50% have also been reported in other studies [6, 25–27].

Generally, the prevalence of *M. perstans* infection was dependent on host gender since our survey indicated that males had a higher chance of acquiring the infection than females probably because males are more exposed than females. However, in the Sene West District, males and females appeared to have equal chances of acquiring the infection. This is in conformity with previous gender associations [7, 11] but others could not confirm this [6, 28, 29].

There have also been suggestions that age influences *M. perstans* infection. It is noteworthy that in our study, young volunteers from nine years of age were infected with *M. perstans* and the rate of infection increased with age as was observed elsewhere [3, 6, 23]. The 20 to 45-year-old volunteer group had a higher chance of being infected when compared to those in other age groups, probably because they are more active and therefore more likely to be exposed to vector bites. It is possible that the cumulative effect of reinfection plays a role in adults getting infected than children. In low transmission communities the differences in MF counts between adults and children suggested a slow steady increase with age [30] whereas high transmission areas had a more rapid increase with age [6]. There was a progressive rise in prevalence with age irrespective of high transmission or low transmission [6].

The selected communities in this study were surrounded by vegetation (plantain farms) and livestock that are known to be breeding grounds for biting midges but the community with the highest prevalence (> 50%) had plantain vegetation that was more dense or swampy with a lot of compost material from the decaying of the plantain stems and droppings from the livestock. Probably that might be the preferred breeding ground for the midges as was observed in other studies [1, 16, 31].

The wide distribution of *M. perstans* MF in the districts suggests a broad distribution of the vector in the Ashanti Akim District. The communities with the high microfilarial prevalence were also noted to have high distribution of *C. inornatipennis* collected with the HLC method. Although previously *C. austeni* (currently *C. milnei*), *C. grahamsi* and *C. fulvithorax* were noted for transmission of the parasite [16–18, 31] their proportion in this study was less than 6%, and there was no significant correlation with the prevalence of *M. perstans* in the dry and wet seasons. The vegetation in *M. perstans* endemic communities comprised of plantain farms, shrubs and decaying plant matters which are known to favour the breeding of *Culicoides* [19].

Trap collections gave seven different species (*C. grahamsi*, *C. milnei*, *C. neavei*, *C. imicola*, *C. fulvithorax*, *C. schultzei* and *C. accraensis*) whereas HLC gave only

**Table 2** Correlation between *M. perstans* prevalence and *Culicoides* spp. abundance: evening trap and human landing catch collections

		<i>C. inornatipennis</i>	<i>C. milnei</i>	<i>C. grahami</i>	<i>C. neavei</i>	<i>C. imicola</i>
Dry season	<i>r</i>	0.847*	0.275	0.408	-0.144	-0.234
	<i>P</i>	0.016	0.55	0.364	0.758	0.613
Wet season	<i>r</i>	0.286	-0.546	-0.179	-0.577	-0.214
	<i>P</i>	0.535	0.205	0.701	0.175	0.645

\*Significant at  $P < 0.05$ 

one species (*C. inornatipennis*). This suggests that of all the collected species, only *C. inornatipennis* was preferentially anthropophilic. Similarly, this finding is in consonance with those of Viennet et al. [32] who collected a higher diversity of species (15 species) using the UV light trap compared to direct aspiration.

## Conclusion

To our knowledge, this is the first study investigating the prevalence of mansonellosis in Ghana in a large study population. Our study proves the presence of mansonellosis in Ghana with over 30% of the people in the study communities being infected. This study therefore provides a platform for additional investigations into the relevance of this filarial, especially its role in co-infections. Interestingly, this study also revealed that the diversity of *Culicoides*, obtained in an endemic area, depends on the type of trap. Here we show that the human landing catch method collected only one species (*C. inornatipennis*) whereas the CDC light traps caught seven different species (*C. grahami*, *C. milnei*, *C. neavei*, *C. imicola*, *C. fulvithorax*, *C. schultzei* and *C. accraensis*) but not *C. inornatipennis*. Such findings need to be taken into consideration when performing entomological studies on *Culicoides* species. The species responsible for transmitting *M. perstans* in Ghana is likely to be *C. inornatipennis*, but formal proof has yet to be obtained.

## Additional files

**Additional file 1: Table S1.** Demographic distribution of volunteers in study communities. (DOCX 83 kb)

**Additional file 2: Table S2.** Evening trap and hlc collections (4–7 pm) for dry season and wet season. (DOCX 106 kb)

**Additional file 3: Table S3.** Overnight trap collections for dry season and wet season (6 pm – 6 am). (DOCX 67 kb)

## Abbreviations

CDC: Centre for Disease Control; MDA: Mass drug administration; LTC: Light trap collection; HLC: Human landing catch; PBMCs: Peripheral blood mononuclear cells

## Acknowledgements

We thank all the volunteers in the study, as well as the Ashanti Akim North District Health Directorate in the Ashanti Region, Sene West and Atebubu Amantin District Health Directorates in the Brong Ahafo Region for their cooperation. We are also grateful to Deutsche Forschungsgemeinschaft (DFG) for funding this work.

## Funding

This work was funded through the Deutsche Forschungsgemeinschaft within the German-African Cooperation Projects in Infectiology (Grant numbers JA 1479/5-1 and HO 2009/10-1).

## Availability of data and materials

The datasets supporting the conclusions of this article are included within the article and in Additional file 1: Table S1, Additional file 2: Table S2 and Additional file 3: Table S3.

## Authors' contributions

AH, MJ, LEL, ROP and AYD designed the study setup. SW trained VSO on *Culicoides* species collection and identification. LBD, VSO, WO, DAB and YM performed the fieldwork. LBD and NN performed the analysis of the data. All authors read and approved the final manuscript.

## Competing interests

The authors declare that they have no competing interests.

## Consent for publication

Consent to publish was obtained by the participants and the guardians of participants below 18 years of age who are considered in Ghana as minors.

## Ethics approval and consent to participate

Approval of the study was granted by the Committee on Human Research, Publication, and Ethics of the School of Medical Sciences (SMS) of Kwame Nkrumah University of Science and Technology (KNUST) (Ref: CHRPE/AP/433/13). The District Health Directorates, chiefs, opinion leaders and community health liaison officers in participating communities were also consulted. Consent/assent was further obtained from all participants aged nine years and above who were willing to take part in the study either by thumb-printing or signing the Informed Consent Form. For children below 18 years, parental consent was additionally obtained.

## Author details

<sup>1</sup>Kumasi Centre for Collaborative Research into Tropical Medicine (KCCR), Kumasi, Ghana. <sup>2</sup>Department of General Pediatrics, Neonatology, and Pediatric Cardiology, University Children's Hospital, Duesseldorf, Germany. <sup>3</sup>Institute for Medical Microbiology, Immunology and Parasitology, University Hospital of Bonn, Bonn, Germany. <sup>4</sup>Faculty of Allied Health Sciences of Kwame Nkrumah University of Science and Technology, Kumasi, Ghana. <sup>5</sup>Department of Medicine, Kwame Nkrumah University of Science and Technology, Kumasi, Ghana. <sup>6</sup>Department of Microbiology and Parasitology, University of Buea, Buea, Cameroon. <sup>7</sup>Department of Clinical Microbiology, Kwame Nkrumah University of Science and Technology, Kumasi, Ghana.

Received: 16 August 2016 Accepted: 28 December 2016

Published online: 07 January 2017

## References

1. Simonsen PE, Onapa AW, Asio SM. *Mansonella perstans* filariasis in Africa. *Acta Trop*. 2011;120(Suppl 1):S109–20.
2. Kamtchum Tatuene JGFR, Nkoa T, Tchateng Mbougua JB, Nana Djeunga HC, Bopda J, Kamgno J. Epidemiology of *Loa loa* and *Mansonella perstans* filariasis in the Akonolinga health district, centre region, Cameroon. *Health Sci Dis*. 2014;15(1):3.
3. Downes BL, Jacobsen KH. A systematic review of the epidemiology of mansonellosis. *Afr J Infect Dis*. 2010;4(1):7–14.

4. Walther M, Muller R. Diagnosis of human filariases (except onchocerciasis). *Adv Parasitol.* 2003;53:149–93.
5. Kiefer G, Bategay M, Gyr N, Hatz C. *Mansonella perstans* filariasis after stay in Cameroon. A 19-year-old patient born in Cameroon, in Switzerland for the last 10 years. *Praxis.* 2002;91(3):61–6.
6. Asio SM, Simonsen PE, Onapa AW. *Mansonella perstans* filariasis in Uganda: patterns of microfilaraemia and clinical manifestations in two endemic communities. *Trans R Soc Trop Med Hyg.* 2009;103(3):266–73.
7. Anosike JC, Dozie IN, Onwuliri CO, Nwoke BE, Onwuliri VA. Prevalence of *Mansonella perstans* infections among the nomadic Fulanis of northern Nigeria. *Ann Agric Environ Med.* 2005;12(1):35–8.
8. Fux CA, Chappuis B, Holzer B, Aebi C, Bordmann G, Marti H, Hatz C. *Mansonella perstans* causing symptomatic hyper eosinophilia in a missionary family. *Travel Med Infect Dis.* 2006;4(5):275–80.
9. Bregani ER, Tantardini F, Rovellini A. *Mansonella perstans* filariasis. *Parassitologia.* 2007;49(1–2):23–6.
10. Dolo H, Coulibaly YI, Dembele B, Konate S, Coulibaly SY, Doumbia SS, et al. Filariasis attenuates anemia and proinflammatory responses associated with clinical malaria: a matched prospective study in children and young adults. *PLoS Negl Tropical Dis.* 2012;6(11):e1890.
11. Wanji S, Tendongfor N, Esum M, Ndingeng S, Enyong P. Epidemiology of concomitant infections due to *Loa loa*, *Mansonella perstans*, and *Onchocerca volvulus* in rain forest villages of Cameroon. *Med Microbiol Immunol.* 2003; 192(1):15–21.
12. Bouyou-Akotet MK, Moussavou Boussougou MN, Ovono-Abessolo F, Owono-Medang M, Kombila M. Influence of *Mansonella perstans* microfilaraemia on total IgE levels in Gabonese patients co-infected with *Loa loa*. *Acta Trop.* 2014;131:11–5.
13. Ndibazza J, Webb EL, Lule S, Mpairwe H, Akello M, Oduru G, et al. Associations between maternal helminth and malaria infections in pregnancy and clinical malaria in the offspring: a birth cohort in entebbe Uganda. *J Infect Dis.* 2013;208(12):2007–16.
14. Awadzi K, Hero M, Opoku O, Buttner DW, Gilles HM. The chemotherapy of onchocerciasis. XV. Studies with albendazole. *Trop Med Parasitol.* 1991;42(4):356–60.
15. Phillips RO, Frimpong M, Sarfo FS, Kretschmer B, Beissner M, Debrah A, et al. Infection with *Mansonella perstans* nematodes in Buruli ulcer patients Ghana. *Emerg Infect Dis.* 2014;20(6):1000–3.
16. Hopkins CA, Nicholas WL. *Culicoides austeni*, the vector of *Acanthocheilonema perstans*. *Ann Trop Med Parasitol.* 1952;46(3):276–83.
17. Sharp NAD. Development of *Microfilaria perstans* in *Culicoides grahami*; a preliminary note. *Trans R Soc Trop Med Hyg.* 1927;27:70.
18. Agbolade OM, Akinboye DO, Olateju TM, Ayanbiyi OA, Kuloyo OO, Fenuga OO. Biting of anthropophilic *Culicoides fulvithorax* (Diptera: Ceratopogonidae), a vector of *Mansonella perstans* in Nigeria. *Korean J Parasitol.* 2006;44(1):67–72.
19. Boorman J. Biting midges: Ceratopogonidae. In: Lane RP, Crosskey RW, Chapman, Hall, editors. *Medical insects and arachnids*; 1993. p. 32–42.
20. Glick J. *Culicoides* biting midges (Diptera: Ceratopogonidae) of Kenya. *J Med Entomol.* 1990;27:85–195.
21. Fischer P, Bamuhiga J, Buttner DW. Occurrence and diagnosis of *Mansonella streptocerca* in Uganda. *Acta Trop.* 1997;63(1):43–55.
22. Onapa AW, Simonsen PE, Baehr I, Pedersen EM. Rapid assessment of the geographical distribution of *Mansonella perstans* infections in Uganda, by screening schoolchildren for microfilariae. *Ann Trop Med Parasitol.* 2005; 99(4):383–93.
23. Bassene H, Sambou M, Fenollar F, Clarke S, Djiba S, Mourembou G, et al. High prevalence of *Mansonella perstans* filariasis in rural Senegal. *Am J Trop Med Hyg.* 2015;93(3):601–6.
24. Mommers EC, Dekker HS, Richard P, Garica A, Chippaux JP. Prevalence of *L. loa* and *M. perstans* filariasis in southern Cameroon. *Trop Geogr Med.* 1995;47(1):2–5.
25. Noireau F, Carme B, Apembet JD, Gouteux JP. *Loa loa* and *Mansonella perstans* filariasis in the Chaillu mountains, Congo: parasitological prevalence. *Trans R Soc Trop Med Hyg.* 1989;83(4):529–34.
26. Kamgno J, Bouchite B, Baldet T, Folefack G, Godin C, Boussinesq M. Study of the distribution of human filariasis in West Province of Cameroon. *Bull Soc Pathol Exot.* 1997;90(5):327–30 (In French).
27. Wanji S, Tayong DB, Layland LE, Datchoua Poutcheu FR, Ndongmo WP, et al. Update on the distribution of *Mansonella perstans* in the southern part of Cameroon: influence of ecological factors and mass drug administration with ivermectin. *Parasit Vectors.* 2016;9(1):311.
28. Agbolade M, Akinboye DO. *Loa loa* and *Mansonella perstans* infections in Ijebu north, western Nigeria: a parasitological study. *Jpn J Infect Dis.* 2001;54(3):108–10.
29. Boussinesq M, Gardon J, Gardon-Wendel N, Chippaux JP. Clinical picture, epidemiology and outcome of *Loa*-associated serious adverse events related to mass ivermectin treatment of onchocerciasis in Cameroon. *Filaria J.* 2003;2 Suppl 1:54.
30. Akue JP, Nkoghe D, Padilla C, Moussavou G, Moukana H, Mbo RA, et al. Epidemiology of concomitant infection due to *Loa loa* and *Mansonella perstans* in Gabon. *PLoS Negl Trop Dis.* 2011;5(10):e1329.
31. Hopkins CA. Notes on the biology of certain *Culicoides* studied in the British Cameroons, West Africa, together with observations on their possible role as vectors of *Acanthocheilonema perstans*. *Ann Trop Med Parasitol.* 1952;46(2):165–72.
32. Viennet E, Garros C, Lancelot R, Allene X, Gardes L, Rakotoarivony I, et al. Assessment of vector/host contact: comparison of animal-baited traps and UV-light/suction trap for collecting *Culicoides* biting midges (Diptera: Ceratopogonidae), vectors of Orbiviruses. *Parasit Vectors.* 2011;4:119.

Submit your next manuscript to BioMed Central and we will help you at every step:

- We accept pre-submission inquiries
- Our selector tool helps you to find the most relevant journal
- We provide round the clock customer support
- Convenient online submission
- Thorough peer review
- Inclusion in PubMed and all major indexing services
- Maximum visibility for your research

Submit your manuscript at  
[www.biomedcentral.com/submit](http://www.biomedcentral.com/submit)

