

# The Calcium Conundrum. Both Versatile Nutrient and Specific Signal<sup>1</sup>

Kendal D. Hirschi\*

United States Department of Agriculture/Agricultural Research Service Children's Nutrition Research Center, and Department of Human and Molecular Genetics, Baylor College of Medicine, Houston, Texas 77030; and Vegetable and Fruit Improvement Center, Texas A&M University, College Station, Texas 77845

Versatility and specificity are usually mutually exclusive terms. However, as we discuss calcium's role in plant nutrition, we are obliged to contrast the plethora of general housekeeping functions of this element against the ability of calcium ( $\text{Ca}^{2+}$ ) to impart signaling specificity during biological responses (Marschner, 1995). Plants have evolved to rely on the unique properties of  $\text{Ca}^{2+}$  for a range of structural, enzymatic, and signaling functions. In this brief update, I will attempt to touch upon the various roles of  $\text{Ca}^{2+}$  in plant nutrition, growth, and development.

$\text{Ca}^{2+}$  is a relatively large divalent cation, and in contrast to other macronutrients, a high proportion of total  $\text{Ca}^{2+}$  is found in the cell walls (apoplast). Some of this  $\text{Ca}^{2+}$  is associated to the cell wall, while another portion is exchangeable at the plasma membrane. Additionally,  $\text{Ca}^{2+}$  can be found at high concentrations within the vacuole of plant cells. In some tissues of particular plants,  $\text{Ca}^{2+}$  can be more than 10% of the dry weight and cause no deleterious effects to plant growth (Marschner, 1995). Juxtaposed against these concentrations of total calcium, the cytosolic-free  $\text{Ca}^{2+}$  activity within these cells remains around the 0.1 to 0.2  $\mu\text{M}$  level. In this update, the first portion will detail the general role of  $\text{Ca}^{2+}$  in plant growth and development. In the middle section, we will focus on how almost imperceptible fluctuations in  $\text{Ca}^{2+}$  within the cytosol may be translated into plant growth and adaptation. This then leads to the final part of this broad review, to a discussion regarding how biologists are attempting to manipulate  $\text{Ca}^{2+}$  levels to improve plant productivity and human nutrition.

### "EN GARDE": CALCIUM PROVIDES MEMBRANE STABILITY AND STRESS TOLERANCE

While we need  $\text{Ca}^{2+}$  to build strong bones, plants need  $\text{Ca}^{2+}$  to strengthen cell walls and provide stress

protection. When human diets are low in  $\text{Ca}^{2+}$ , this leads to fragile bones or osteoporosis. With plants, soils or media deficient in  $\text{Ca}^{2+}$  can cause the disintegration of cell walls and the collapse of the affected tissues (Kirby and Pilbeam, 1984).  $\text{Ca}^{2+}$  deficiencies have been associated with bacterial diseases, fruit rotting, and other postharvest problems (Marschner, 1995). Thus,  $\text{Ca}^{2+}$  is cited for its beneficial effect on plant vigor and stiffness and also on grain and seed formation (Bennett, 1993). Increasing the  $\text{Ca}^{2+}$  content of fruits, for example, by spraying several times with  $\text{Ca}^{2+}$  salts during fruit development or by postharvest dipping in  $\text{CaCl}_2$  solution, leads to an increase in firmness of the fruit and can delay fruit ripening (Bramlage, 1994; Bramlage and Weis, 1994).

$\text{Ca}^{2+}$  stabilizes cell membranes by connecting various proteins and lipids at membrane surfaces. Additionally,  $\text{Ca}^{2+}$  can be exchanged with other cations ( $\text{K}^+$ ,  $\text{Na}^+$ , or  $\text{H}^+$ ) during stress responses. To protect the plasma membrane from various stresses,  $\text{Ca}^{2+}$  must always be present in the external solution, where it can regulate the selectivity of ion uptake. In fact, when plants are challenged with salinity stress, an increase in the concentration of  $\text{Ca}^{2+}$  often can ameliorate the inhibitory effect on growth (Epstein, 1972). In general,  $\text{Ca}^{2+}$  is involved in a plethora of plant functions (Marschner, 1995).  $\text{Ca}^{2+}$  is involved in cell elongation and cell division, influences the pH of cells, and also acts as a regulatory ion in the source-sink translocation of carbohydrates through its effect on cells and cell walls.

When  $\text{Ca}^{2+}$  is deficient in the media/soil, there will be problems with cell wall stability (see above; Marschner, 1995).  $\text{Ca}^{2+}$  in the xylem sap is translocated upward in the transpiration system, but once deposited, it is almost immobile. As a result of this immobility, deficiency symptoms are most pronounced in young tissues—where cell division is occurring. However, true  $\text{Ca}^{2+}$  deficiencies in soils are rather rare, and problems associated with low soil  $\text{Ca}^{2+}$  may be attributed to soil problems rather than a true  $\text{Ca}^{2+}$  deficiency. For example,  $\text{Ca}^{2+}$  deficiencies are favored by very low soil pH and on soils high in magnesium and potassium. Probably the most recognizable  $\text{Ca}^{2+}$  deficiency, especially to the weekend gardener, is blossom-end rot of tomato fruits, which is induced

<sup>1</sup> This work was supported by the U.S. Department of Agriculture/Agricultural Research Service (cooperative agreement no. 58-6250-6001), by the National Science Foundation (grant no. IBN-0209777), and by the National Institute of Health (grant no. 1R01 DK 062366).

\* E-mail kendalh@bcm.tmc.edu; fax 713-798-7078.

www.plantphysiol.org/cgi/doi/10.1104/pp.104.046490.

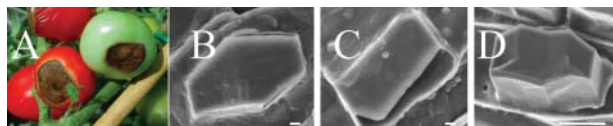
by water stress (Bennett, 1993). At the time of fruit set, cells at the blossom end of fruits are injured when insufficient  $\text{Ca}^{2+}$  translocation to the flower results in a dry-rot area on the expanding fruit (Fig. 1).

The distribution of  $\text{Ca}^{2+}$  at the cell wall and plasma membrane is mainly the result of a plethora of binding sites for  $\text{Ca}^{2+}$  in the cell walls as well as the carefully regulated transport of  $\text{Ca}^{2+}$  into the cytoplasm (Han et al., 2003; see below). Pectins and pectates bind a large portion of  $\text{Ca}^{2+}$ . As  $\text{Ca}^{2+}$  supplies increase within certain cells, the proportion of  $\text{Ca}^{2+}$  oxalate increases. In certain situations, oxalate-bound  $\text{Ca}^{2+}$  may represent the dominant binding form of  $\text{Ca}^{2+}$  (Fig. 1; Nakata, 2003). Intracellular  $\text{Ca}^{2+}$  is also found in the endoplasmic reticulum (ER) and chloroplast, and most of the water-soluble calcium is in the vacuole. By virtue of their size and capacity for calcium accumulation, the vacuole is the most prominent sink for calcium storage.

Much of our knowledge regarding the role of  $\text{Ca}^{2+}$  in cell wall stability and expansion has been obtained from classic physiology experiments. Since it is difficult (impossible?) to generate plant  $\text{Ca}^{2+}$  auxotrophs, the onus is now on plant biologists to generate a set of molecular tools to unravel the mechanisms behind these actions (Braam, 1999).

#### “HUSHHHH”: KEEPING FREE CYTOSOLIC CALCIUM LEVELS LOW

Numerous cytosolic proteins bind  $\text{Ca}^{2+}$  to dampen free cytosolic  $\text{Ca}^{2+}$  concentrations (Sanders et al., 1999; Luan et al., 2002; Sanders et al., 2002). Some of the most prominent  $\text{Ca}^{2+}$ -binding proteins are the molecular chaperone binding proteins, calnexin, calsequestrin, and calreticulin (CRT; Pittman and Hirschi, 2003). Of these, CRT is responsible for the main  $\text{Ca}^{2+}$ -retaining pool in plants. During signal transduction events (see below), proteins like calmodulin and  $\text{Ca}^{2+}$ -dependent protein kinases (CDPKs) also bind  $\text{Ca}^{2+}$ . Calmodulin and CDPKs contains four  $\text{Ca}^{2+}$ -binding EF-hand motifs. Arabidopsis appears to have around 250 putative proteins that contain at least one EF-hand motif (Day et al., 2002). Future work will need to be directed at the function of these various proteins in  $\text{Ca}^{2+}$  homeostasis, signaling, and plant architecture.



**Figure 1.** A, Blossom-end rot of tomato is caused in part by calcium deficiencies. Scanning electron micrographs of calcium oxalate crystals from *Trifolium pratense* (B), *Vigna unguiculata* (C), and *Vicia faba* (D). Note the different shapes among the various plants. Scale bar = 1  $\mu\text{m}$  (from Nakata, 2003, with permission).

Another means of reducing cytosolic calcium levels is by transporting the  $\text{Ca}^{2+}$  into endomembranes such as the ER, chloroplast, and vacuole (Sze et al., 2000). Homeostasis of  $\text{Ca}^{2+}$  must be achieved by moving  $\text{Ca}^{2+}$  out of the cytosol across the plasma membrane and various endomembranes. Efflux across the plasma membrane may be the ultimate fate of excess cytosolic  $\text{Ca}^{2+}$  because both biochemical buffering and sequestration have finite capacities. At the plasma membrane, the  $\text{Ca}^{2+}$  concentration ratio (inside/outside) is typically of the order of  $10^{-4}$ . Efflux of  $\text{Ca}^{2+}$  from the cytosol is mediated by pumps energized by either ATP hydrolysis or the proton motive force. Passive entry of  $\text{Ca}^{2+}$  into the cytosol is mediated by ion channels (Sanders et al., 2002).

#### “STOP AND GO”: CHANGES IN CYTOSOLIC CALCIUM LEVELS MEDIATE PLANT RESPONSES

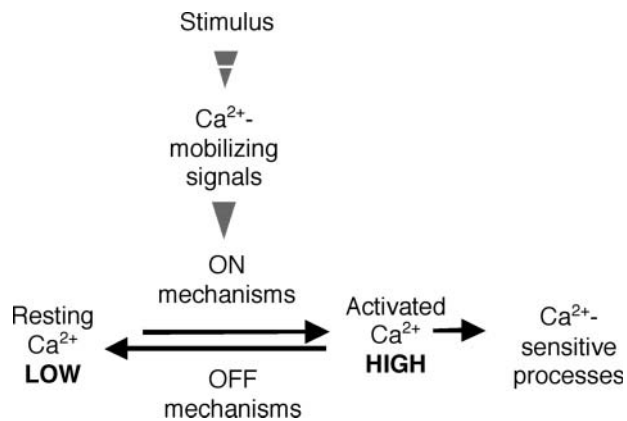
$\text{Ca}^{2+}$  is a fundamental component of eukaryotic signaling.  $\text{Ca}^{2+}$ -triggered events are critical for both normal cellular activity and for adapted responses (Sanders et al., 2002). At one level, these  $\text{Ca}^{2+}$  signaling events appear simple: cells at rest have a low level of cytosolic  $\text{Ca}^{2+}$  that rises during a signal transduction event. However, this signaling is quite complex when one contemplates how a ubiquitous nutrient becomes translated into a myriad of unique stimulus dependent responses.

$\text{Ca}^{2+}$  signal transduction can be divided into four components (Fig. 2; Berridge et al., 2000): (1) signaling elicits various  $\text{Ca}^{2+}$  mobilizing signals; (2) the mobilizing signals feed  $\text{Ca}^{2+}$  into the cytoplasm generating the ON events; (3)  $\text{Ca}^{2+}$  functions as a messenger to activate  $\text{Ca}^{2+}$  sensitive processes, which are mediated by proteins like calmodulin and CDPKs; and (4) the OFF mechanisms, composed of transporters and binding proteins, remove the  $\text{Ca}^{2+}$  from the cytoplasm to restore the resting state.

These distinctions are somewhat arbitrary given that the mechanisms are tightly coupled and there is often a link between  $\text{Ca}^{2+}$  efflux or depletion and  $\text{Ca}^{2+}$  entry. A central facet of these four components of signaling is that local spatial and temporal patterns of  $\text{Ca}^{2+}$  signals are important in encoding the specificity of cellular responses (Putney, 1998). In other words,  $\text{Ca}^{2+}$  signaling, like real-estate prices, depends on location.

These localized alterations in  $\text{Ca}^{2+}$  must be judiciously regulated. A marked and prolonged increase in  $\text{Ca}^{2+}$  is harmful to cells because it leads to activation of particular  $\text{Ca}^{2+}$ -dependent enzymes, having a potentially adverse effect. In some mammalian cells,  $\text{Ca}^{2+}$  overload can also cause mitochondrial failure; if this becomes irreversible it leads to cell death (Duchen, 2000).

There are several fundamental aspects of plant  $\text{Ca}^{2+}$  signaling that should be noted. While animals predominantly utilize  $\text{Na}^+$  as the coupling ion to circulate



**Figure 2.** The four units of the Ca<sup>2+</sup>-signaling network (Berridge et al., 2000). Stimuli act by generating Ca<sup>2+</sup>-mobilizing signals that act on various ON mechanisms to trigger an increase in the intracellular concentration of Ca<sup>2+</sup>. The response is terminated by OFF mechanisms that restore Ca<sup>2+</sup> to resting levels.

Ca<sup>2+</sup> across biological membranes, plants almost exclusively use protons as the coupling ion (Sze et al., 1999). Also, the design and architecture of the plant cell mediate spatial features to the Ca<sup>2+</sup> spike not seen in mammalian systems—in particular, the Ca<sup>2+</sup> spikes around the vacuole. Did you know the plant vacuole can occupy up to 99% of a plant cell's volume (Marty, 1999)? Aside from the Ca<sup>2+</sup> fluctuations that occur around the ER and plasma membrane, various findings now suggest that localized Ca<sup>2+</sup> spikes around the plant vacuole play a pivotal role in determining a plant's growth, development, and adaptation to environmental responses (Sanders et al., 2002). However, Ca<sup>2+</sup> spikes in and around the mitochondria and other endomembranes are also likely to be important in particular cellular responses (Logan and Knight, 2003).

The technology to visualize fluctuations in cytosolic Ca<sup>2+</sup> levels and combine these approaches with molecular genetics is an exciting new vista in plant biology (Allen et al., 1999; Kiegle et al., 2000). For example, this technology has been used to visualize the perturbations in cytosolic calcium oscillations associated with reduced vacuolar H<sup>+</sup>-ATPase (V-ATPase) activity (Allen et al., 2000, 2001). These studies have gone on to demonstrate that specific cytosolic Ca<sup>2+</sup> oscillations are essential to elicit processes like stomatal closure.

#### DESIGNING FOR YIELD: ALTERING CALCIUM LEVELS FOR INCREASED PLANT PRODUCTIVITY

For more than 2,000 years, it has been standard agricultural practice to add mineral elements to soils to improve plant growth. As we mentioned previously, increased Ca<sup>2+</sup> levels in the soils can improve membrane stability, and Ca<sup>2+</sup> is applied to

soils to ameliorate salinity effects and decrease pathogen infection. It is also added exogenously to ripe fruits to improve durability. The genetic manipulation of the processes that govern the passage of Ca<sup>2+</sup> through the cytoplasm may also have a substantial impact not only on improving growth but also on manipulating particular cellular responses (Pittman and Hirschi, 2003). For example, rice plants have been generated with increased levels of a particular CDPK (Saijo et al., 2000, 2001). The extent of tolerance to cold and salt/drought stresses of these plants correlated well with the level of CDPK proteins. Plants have also been engineered to express higher levels of the Ca<sup>2+</sup>-binding protein CRT (Persson et al., 2001; Wyatt et al., 2002). These plants are more vigorous than the controls and contain slightly more total Ca<sup>2+</sup> than wild-type plants. Therefore, it appears that the manipulation of CDPK, CRT, and other Ca<sup>2+</sup>-binding proteins may be one way to engineer more robust plant varieties.

#### DESIGNING FOR FEED: INCREASING BIOAVAILABLE CALCIUM LEVELS IN FOODS

Some portion of Ca<sup>2+</sup> in foods is bioavailable, meaning it is digested, absorbed, and metabolized. This bioavailable Ca<sup>2+</sup> affects various developmental processes, including bone formation and calcification. An estimated \$13.8 billion in health-care costs each year is used on osteoporosis-related care (Bachrach, 1999, 2001). Unfortunately, the majority of people do not consume enough Ca<sup>2+</sup>. The low Ca<sup>2+</sup> content of the most widely consumed vegetables make them a minor contributor to the Ca<sup>2+</sup> intake for most Americans (Weaver et al., 1999). Many plant foods are enriched in Ca<sup>2+</sup>, but the Ca<sup>2+</sup> is often found sequestered as an oxalate salt (Fig. 1). Oxalate is an antinutrient that sequesters Ca<sup>2+</sup> in a state that renders it unavailable for nutritional absorption (Weaver et al., 1987). In general, Ca<sup>2+</sup> absorption is inversely proportional to the oxalic acid content of the food. The ability to genetically alter the Ca<sup>2+</sup> content of agriculturally important crops is just emerging.

Recently, scientists have manipulated Ca<sup>2+</sup> oxalate crystal formation in *Medicago truncatula* (a forage legume; Nakata, 2003). *Medicago* is not consumed by humans; however, the plant contains Ca<sup>2+</sup> oxalate crystals in the leaf tissue that are very similar to those found in other plant foods such as spinach (Fig. 1). Several allelic mutants (*cod 5*) devoid of crystal formation have been isolated. In the greenhouse, plant phenotype and growth studies indicated little difference between the *cod 5* and unmutagenized control plants. Oxalate measurements show that *cod 5* has oxalate levels at the limit of detection. Ca<sup>2+</sup> levels, on the other hand, are comparable to unmutagenized control plants. Overall, the isolation of *cod 5* shows the feasibility of manipulating Ca<sup>2+</sup> oxalate formation in

plants, including many crop plants (e.g. leafy green vegetables), via a mutation at a single loci. These findings suggest that in the future, it may be possible to alter the function of a single gene in spinach to remove all Ca<sup>2+</sup> oxalate crystals.

Another approach to alter the content of bioavailable Ca<sup>2+</sup> content in plants is to engineer high expression of Ca<sup>2+</sup> transporters in the edible portion of the plant. Simplistically, this strategy can be thought of as nutrient mining, where the nutrient is transported from the soil into the edible portions of the plant. Specifically, one potential model for increasing the Ca<sup>2+</sup> content in edible foods would be to manipulate plant endomembrane transporters to transport more Ca<sup>2+</sup>. In plants, we have characterized a vacuolar Ca<sup>2+</sup> antiporter termed cation exchanger 1 (CAX1). In both tobacco and carrots, high-level expression of CAX1 displays dramatic increases in calcium content when compared to vector control plants (Hirschi, 1999; Park et al., 2004). In a similar fashion, ectopic expression in tobacco of a wheat cation transporter LCT1 increases shoot Ca<sup>2+</sup> levels (Antosiewicz and Hennig, 2004). In the future, using mouse and human feeding studies, biologists will test if these genetically modified plants have altered calcium bioavailability.

## CONUNDRUM REDOX

In this general overview, I have attempted to illustrate that while Ca<sup>2+</sup> is required for basic plant nutrition, it is also the most common signal transduction element in all eukaryotic cells. To paraphrase the paradox, Ca<sup>2+</sup> levels can climb to a huge percentage of the plant dry mass; however, minute fluctuations in cytosolic Ca<sup>2+</sup> levels determine how plants respond to developmental and external cues. While Ca<sup>2+</sup> is required for life, prolonged high intracellular Ca<sup>2+</sup> levels lead to cell death. Ca<sup>2+</sup> cannot be metabolized like other second messenger molecules, so cells tightly regulate cytosolic levels through numerous binding proteins and transporters.

Remember, next time you bite into an apple or squeeze a tomato, you are, in part, assessing the Ca<sup>2+</sup> status of the fruit. Using the tools of modern molecular genetics and in vivo Ca<sup>2+</sup> imaging, plant scientists are trying to assess the cytosolic Ca<sup>2+</sup> fluctuations in plants. The outcome of these studies should aid in conceptualizing and harnessing this useful signal/nutrient.

## ACKNOWLEDGMENTS

I thank the members of my lab and Jon K. Pittman for critical reading of this manuscript.

Received May 14, 2004; returned for revision June 16, 2004; accepted June 21, 2004.

## LITERATURE CITED

- Allen GJ, Kwak JM, Chu SP, Llopis J, Tsien RY, Harper JE, Schroeder JI (1999) Cameleon calcium indicator reports cytoplasmic calcium dynamics in *Arabidopsis* guard cells. *Plant J* **19**: 735–747
- Allen GJ, Chu SP, Harrington CL, Schumacher K, Hoffman T, Tang YY, Grill E, Schroeder JI (2001) A defined range of guard cell calcium oscillation parameters encodes stomatal movements. *Nature* **411**: 1053–1057
- Allen GJ, Chu SP, Schumacher K, Shimazaki CT, Vafeados D, Kemper A, Hawke SK, Tallman G, Tsien RY, Harper JE, et al (2000) Alteration of stimulus-specific guard cell calcium oscillations and stomatal closing in *Arabidopsis det3* mutant. *Science* **289**: 2338–2342
- Antosiewicz DM, Hennig J (2004) Overexpression of LCT1 in tobacco enhances the protective action of calcium against cadmium toxicity. *Environ Pollut* **129**: 237–245
- Bachrach LK (1999) Malnutrition, endocrinopathies, and deficits in bone mass acquisition. In J-P Bonjour, RC Tsang, eds, *Nutrition and Bone Development*. Vevey/Lippincott-Raven, Philadelphia, pp 261–277
- Bachrach LK (2001) Acquisition of optimal bone mass in childhood and adolescence. *Trends Endocrinol Metab* **12**: 22–28
- Bennett WF (1993) *Nutrient Deficiencies and Toxicities in Crop Plants*. APS Press, St. Paul
- Berridge MJ, Lipp P, Bootman MD (2000) The versatility and universality of calcium signaling. *Nat Rev Mol Cell Biol* **1**: 11–21
- Braam J (1999) If walls could talk. *Curr Opin Plant Biol* **2**: 521–524
- Bramlage WJ (1994) Physiological role of calcium in fruit. In AB Petersen, RG Stevens, eds, *Tree Fruit Nutrition*. Good Fruit Grower, Yakima, WA, pp 101–107
- Bramlage WJ, Weis SA (1994) Postharvest use of calcium. In AB Petersen, RG Stevens, eds, *Tree Fruit Nutrition*. Good Fruit Grower, Yakima, WA, pp 125–134
- Day IS, Reddy VS, Ali GS, Reddy ASN (2002) Analysis of EF-hand-containing proteins in *Arabidopsis*. *Genome Biol* **3**: 1–24
- Duchen MR (2000) Mitochondria and Ca<sup>2+</sup> in cell physiology and pathophysiology. *Cell Calcium* **28**: 339–348
- Epstein E (1972) *Mineral Nutrition of Plants: Principles and Perspectives*. Wiley, New York
- Han S, Tang R, Anderson LK, Woerner TE, Pei Z-M (2003) A cell surface receptor mediates extracellular Ca<sup>2+</sup> sensing in guard cells. *Nature* **425**: 196–200
- Hirschi KD (1999) Expression of *Arabidopsis* CAX1 in tobacco: altered calcium homeostasis and increased stress sensitivity. *Plant Cell* **11**: 2113–2122
- Kiegle E, Moore CA, Haseloff J, Tester MA, Knight MR (2000) Cell-type-specific calcium responses to drought, salt and cold in the *Arabidopsis* root. *Plant J* **23**: 267–278
- Kirby EA, Pilbeam DJ (1984) Calcium as a plant nutrient. *Plant Cell Environ* **7**: 397–405
- Logan DC, Knight MR (2003) Mitochondrial and cytosolic calcium dynamics are differentially regulated in plants. *Plant Physiol* **133**: 21–24
- Luan S, Kudla J, Rodriguez-Concepcion M, Yalovsky S, Grissem W (2002) Calmodulins and calcineurin B-like proteins: calcium sensors for specific signal response coupling in plants. *Plant Cell* **14** (Suppl): S389–S400
- Marschner H (1995) *Mineral Nutrition of Plants*, Ed 2. Academic Press, Boston
- Marty F (1999) Plant vacuoles. *Plant Cell* **11**: 587–599
- Nakata PA (2003) Advances in our understanding of calcium oxalate crystals formed in plants. *Plant Sci* **164**: 901–909
- Park SH, Kim C-K, Pike LM, Smith RH, Hirschi KD (2004) Increased calcium in carrots by expression of an *Arabidopsis* H<sup>+</sup>/Ca<sup>2+</sup> transporter. *Mol Breed* (in press)
- Persson S, Wyatt SE, Love J, Thompson WF, Robertson D, Boss WF (2001) The Ca<sup>2+</sup> status of the endoplasmic reticulum is altered by induction of calreticulin expression in transgenic plants. *Plant Physiol* **126**: 1092–1104
- Pittman JK, Hirschi K (2003) Don't shoot the (second) messenger: endomembrane transporters and binding proteins modulate cytosolic Ca<sup>2+</sup> levels. *Curr Opin Plant Biol* **6**: 257–262

- Putney JW** (1998) Calcium signaling: up, down, up, down...what's the point? *Science* **279**: 191–192
- Saijo Y, Hata S, Kyojuka J, Shimamoto K, Izui K** (2000) Over-expression of a single  $\text{Ca}^{2+}$ -dependent protein kinase confers both cold and salt/drought tolerance on rice plants. *Plant J* **23**: 319–327
- Saijo Y, Kinoshita N, Ishiyama K, Hata S, Kyojuka J, Hayakawa T, Nakamura T, Shimamoto K, Yamaya T, Izui K** (2001) A  $\text{Ca}^{2+}$ -dependent protein kinase that endows rice plants with cold- and salt-stress tolerance functions in vascular bundles. *Plant Cell Physiol* **42**: 1228–1233
- Sanders D, Brownlee C, Harper JF** (1999) Communicating with calcium. *Plant Cell* **11**: 691–706
- Sanders D, Pelloux J, Brownlee C, Harper JF** (2002) Calcium at the crossroads of signaling. *Plant Cell* **14** (Suppl): S401–S417
- Sze H, Li X, Palmgren MG** (1999) Energization of plant cell membranes by  $\text{H}^+$ -pumping ATPases: regulation and biosynthesis. *Plant Cell* **11**: 677–689
- Sze H, Liang F, Hwang I, Harper J** (2000) Diversity and regulation of  $\text{Ca}^{2+}$  pumps: insights from expression in yeast. *Annu Rev Plant Physiol Plant Mol Biol* **51**: 433–462
- Weaver CM, Martin BR, Ebner JS, Krueger CA** (1987) Oxalic acid decreases calcium absorption in rats. *J Nutr* **117**: 1903–1906
- Weaver CM, Proulx WR, Heaney R** (1999) Choices for achieving adequate dietary calcium with a vegetarian diet. *Am J Clin Nutr* **70**: 543S–548S
- Wyatt SE, Tsou P-L, Robertson D** (2002) Expression of the high capacity calcium binding domain of calreticulin increase bioavailable calcium stores in plants. *Transgenic Res* **11**: 1–10