

RESEARCH ARTICLE

Open Access



A genome-wide scan for genes under balancing selection in *Drosophila melanogaster*

Myriam Croze^{1*}, Andreas Wollstein¹, Vedran Božičević¹, Daniel Živković^{1,2}, Wolfgang Stephan^{1,3} and Stephan Hutter¹

Abstract

Background: In the history of population genetics balancing selection has been considered as an important evolutionary force, yet until today little is known about its abundance and its effect on patterns of genetic diversity. Several well-known examples of balancing selection have been reported from humans, mice, plants, and parasites. However, only very few systematic studies have been carried out to detect genes under balancing selection. We performed a genome scan in *Drosophila melanogaster* to find signatures of balancing selection in a derived (European) and an ancestral (African) population. We screened a total of 34 genomes searching for regions of high genetic diversity and an excess of SNPs with intermediate frequency.

Results: In total, we found 183 candidate genes: 141 in the European population and 45 in the African one, with only three genes shared between both populations. Most differences between both populations were observed on the X chromosome, though this might be partly due to false positives. Functionally, we find an overrepresentation of genes involved in neuronal development and circadian rhythm. Furthermore, some of the top genes we identified are involved in innate immunity.

Conclusion: Our results revealed evidence of genes under balancing selection in European and African populations. More candidate genes have been found in the European population. They are involved in several different functions.

Keywords: Balancing selection, Genome scan, *Drosophila melanogaster*, Population genetics

Background

In most species, a high level of genetic polymorphism has been observed, and the causes of this high diversity have been widely debated. Dobzhansky proposed the 'balanced hypothesis', which suggests that many genes are polymorphic and that these polymorphisms are maintained by heterozygote advantage [1]. However, systematic studies that have been carried out on various organisms have so far reported little evidence of balancing selection [2–8].

Balancing selection is characterized by an increased genetic diversity because it maintains alleles at intermediate

frequencies within populations. It involves various mechanisms: besides heterozygote advantage (also called overdominant selection [9, 10]) frequency-dependent selection [11] and local adaptation in substructured populations [12] have been proposed.

One famous case of heterozygote advantage is the sickle cell hemoglobin polymorphism in humans, which is maintained in environments in which *Plasmodium falciparum* is endemic [13]. Furthermore, some antigen genes are under overdominant selection in *P. falciparum* [7]. Several examples of negative frequency-dependent selection are also known, as for instance in the Major Histocompatibility Complex (MHC) in vertebrates [14–18] and in resistance genes (R-genes) in plants [19–21]. Frequency-dependent selection may be linked to coevolution between hosts and pathogens and,

* Correspondence: croze@bio.lmu.de

¹Section of Evolutionary Biology, Department of Biology II, University of Munich (LMU), Grosshaderner Str. 2, 82152 Planegg-Martinsried, Germany
Full list of author information is available at the end of the article



more specifically, to the trench warfare scenario in which polymorphisms in the host and the pathogen may be maintained for a long time [21, 22]. In *Drosophila*, it has been suggested that immune genes might be evolving under this type of balancing selection due to host-parasite interactions [23–25].

Most of the examples of balancing selection have been found in humans [4, 26–28], bacteria [5, 7], mice [29] and plants [30–32], and to a lesser extent in *D. melanogaster* (but see [33–37]). Although limited in number, these examples seem to suggest that, in addition to immunity genes, genes under balancing selection are also involved in other functions, such as the ABO blood group in primates [38] or the S-locus (determining self-incompatibility) in plants [39].

The reason why our understanding of balancing selection is limited to relatively few loci may be mainly due to the difficulty associated with detecting this type of selection at the whole-genome level. However, with the new technologies to analyze large datasets and the availability of whole-genome sequence data with high densities of polymorphisms, it should be possible to identify signatures of balancing selection if they exist. Only a few of these examples were detected by systematic searches (i.e. whole genome scans). An exception presents the work by Andrés et al. [4] who analyzed 13,400 human genes using methods based on the HKA test [40] and the site-frequency-spectrum (SFS). They found 60 candidate genes under balancing selection in two human populations. Several *Drosophila* studies have also recently obtained encouraging results in this respect [8, 36, 37]. Based on whole-genome sequence data, it has been shown that some genes share non-synonymous polymorphisms between *D. melanogaster* and *D. simulans* [34]. Such trans-species polymorphisms are expected to occur in the case of ancient balancing selection [41, 42]. Furthermore, Comeron [35] used a background selection model to look for the spatial distribution of polymorphisms and substitutions around selective sites as well as the allele frequencies surrounding polymorphic sites. He also found some new candidate genes for balancing selection in *D. melanogaster*. Interestingly, these genes are not only related to immunity, but are involved in an array of biological processes such as sensory perception of chemical stimuli, olfactory behavior, and inter-male aggressive behavior. However, more analyses are needed to increase our knowledge about balancing selection.

In this study, we performed a systematic genome-wide scan to search for signatures of balancing selection in *D. melanogaster*. Following our preliminary work [8], we used next-generation-sequencing (NGS) data to identify targets of balancing selection in a derived (European) and an ancestral (African) population. We searched for evidence of balancing selection based on two criteria:

high levels of polymorphism compared to neutral expectations and a distortion of the SFS toward intermediate frequencies. To ensure significance of our results we performed coalescent simulations using appropriate demographic models.

Methods

Sequence data

Full-genome sequences of *D. melanogaster* populations were taken from the *Drosophila* Population Genomics Project (DPGP) (<http://www.dpgp.org>). We used samples from an African and a derived European population whose demography has been reasonably well estimated [43]. The African samples consist of 22 lines from Rwanda including 20 lines from Gikongoro and two from Cyanguu [44]. The European samples consist of four lines from Lyon, France [44] and eight lines from Leiden, the Netherlands [45]. Full-genome sequences were generated by next-generation sequencing of haploid embryos as described in [46]. Consequently, all sequences are haploid, which should minimize the influence of mapping errors. All the lines used for the analysis (22 in Africa and 12 in Europe) were without admixture since in a previous analysis we tested for population substructure using sNMF [47] (A. Wollstein, unpublished results) and excluded these lines from subsequent analysis. This led to the removal of seven out of originally 27 lines from Gikongoro, four out of eight lines from Lyon and two out of 10 lines from Leiden. This procedure coincidentally also removed lines for which genomic blocks of identity-by-descent (IBD) had previously been described [44].

Statistical analyses

Basic population genetic parameters were estimated using the program *VariScan* [48]. This includes Watterson's estimator θ_w [49] and Tajima's D [50]. Similar to Andrés et al. [4], we used these statistics to search for evidence of balancing selection such as a high level of polymorphisms (θ_w) and an excess of polymorphisms at intermediate frequency (Tajima's D). Even though these estimators are slightly different from the statistics used in Andrés et al. [4], they look for similar characteristics of balancing selection and are easily computed and simulated. We estimated these statistics for the whole genome and for each chromosome arm (X, 2L, 2R, 3L, 3R) for different window sizes (0.2, 0.5, 1, 2, and 5 kb) to optimize our analysis (see below).

To determine which window size is best, we simulated balancing selection with the software *msms* [51]. We performed coalescent simulations under the estimated demographic model (see below) for a neutral model and a selection model of heterozygote advantage. We set the selection coefficient for heterozygote advantage (s) to

0.1. The current effective population size N_e was estimated from the demographic model as 1.09×10^6 in the European population and 1.62×10^6 in the African population. We used a recombination rate of 0.5 cM/Mb and set the start of selection to $2N_e$ generations backward in time. We compared the distributions of the Tajima's D and θ_w statistics for simulated data under neutrality and selection and determined the percentage of overlap between the two distributions for each window size (0.2, 0.5, 1, 2, and 5 kb). Windows that show smaller overlap between the distributions should have higher power to distinguish between selection and neutrality.

To conduct a test of balancing selection we estimated the parameters of the demographic null models of the European and African populations (A. Wollstein, unpublished results) based on expectations of the SFS at neutral sites [52]. The SFS for both populations were generated by extracting SNPs located at positions 8 – 30 within small introns (length ≤ 65 bp) as these sites are thought to behave closest to neutrality [53]. Demographic parameters were estimated for a model with instantaneous population size changes at varying time points. The demographic models that best fit the observed data were used for our analysis. The best-fit demographic models allow for a bottleneck in the European population and stepwise growth (with a shallow bottleneck) in the African population. Parameters were estimated for autosomal chromosomes and X chromosome separately as autosomes and sex chromosomes might have different demographic histories [54].

We ran 1000 coalescent simulations for each window of 1-kb across the full genome using *ms* [55] and for each coalescent simulation θ_w and Tajima's D were estimated resulting in a neutral distribution of both statistics for each window across the genome. For each window local mutation rates were inferred based on divergence to *D. sechellia* [56, 57]. The local recombination rates were obtained using the *D. melanogaster* recombination rate calculator [58] based on the values of [59]. We then compared the observed values of Tajima's D and θ_w for each window to the neutral distributions generated with simulations that take into account the demographic history.

Only those windows for which the observed values of both statistics fell within the upper 95th percentile of the simulations were kept as candidates. A p -value was estimated for each window for the θ_w and Tajima's D statistics based on the proportion of simulations for which θ_w and Tajima's D was greater than the observed value. When the p -value was equal to zero, we ran additional 10,000 coalescent simulations to obtain a more precise p -value. Benjamini-Hochberg multiple test correction [60] was applied to adjust the p -values. Windows with corrected p -values < 0.05 were retained as significant.

GO enrichment analysis

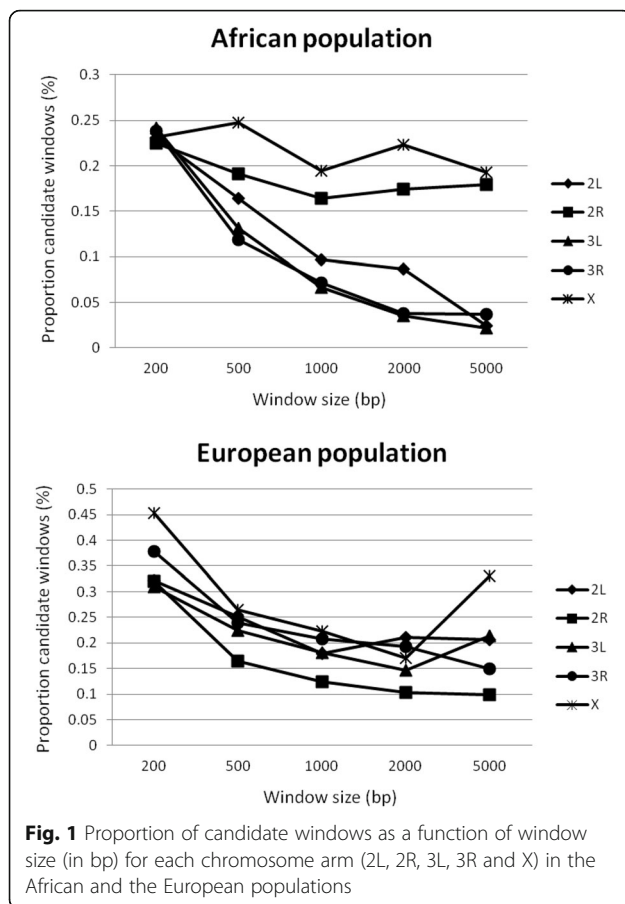
First, a list of genes located in candidate windows, which were significant after correction for multiple testing, was determined for the African and European populations as well as for candidate regions and genes shared between the two populations. Then a gene ontology (GO) enrichment analysis was applied to this list of genes in candidate windows using Cytoscape version 3.2.0 [61], in particular its plugin ClueGO version 2.2.5 (<http://apps.cytoscape.org/apps/cluego>) and CluePedia version 1.2.5 [62, 63] (<http://apps.cytoscape.org/apps/cluepedia>). We used Cohen's Kappa score [64] of 0.7 as a threshold for the proportion of genes shared between enriched ontology and pathway terms to link the terms into GO networks [63] and networks of KEGG [65] and Reactome [66] metabolic pathways. Using ClueGO and CluePedia we integrated enriched GO and pathway terms into networks. Enrichments and depletions of single terms were calculated using a two-tailed hypergeometric test. We applied the false-discovery-rate (FDR) correction [60] and retained the enriched terms with a FDR-corrected p -value of less than 0.05 that contained at least three candidate genes, or those whose candidate genes represented at least 4% of the total number of genes related to the term. In addition, we used the option *Fusion* to group the related terms that have similar associated genes.

Results

Genome scan

To detect signatures of balancing selection in the genome of *D. melanogaster*, two statistics were used: θ_w and Tajima's D . Estimates of these two statistics were computed for windows covering the complete genome. To find an appropriate window size, we performed analyses for various lengths (0.2, 0.5, 1, 2, and 5 kb). Recombination might confine signals of selection to a narrow region. Consequently the analyzed window sizes should be limited. However, windows must also be large enough to contain a sufficient number of polymorphisms for obtaining reasonable estimates of both statistics. We found a window size of 1 kb to be appropriate (see below).

We generated empirical distributions of both statistics separately for each of the five major chromosomal arms. Windows in which the two statistics jointly fell into the upper 95th percentile of the distribution were considered as potential candidates of balancing selection. The proportion of windows on each chromosome identified as candidates differed depending on window size, such that the proportions generally decreased with increasing size (Fig. 1). This decrease may be explained by linked recurrent negative [67] or positive selection [68], which is more pronounced in the larger windows. For chromosome arm 2R and X the pattern was not as clear in the



African population (Fig. 1). This may be explained by the higher average recombination rate on chromosome arm 2R and X compared to the other chromosome arms [59]. In the European population, we observed an increase for the X chromosome for 5 kb which could be due to the fact that the overall number of windows along the chromosome for 5 kb is low compared to smaller window sizes and consequently the proportion of candidate windows may be inflated purely due to variance. Overall, the proportion of windows we identified as candidates is rather low (<0.25% in Africa). This suggests that our approach may be conservative, which might be influenced by the fact that our two used summary statistics (θ_w and Tajima's D) are numerically not independent.

In order to examine which window size has the highest power to detect balancing selection, we simulated sequence data under neutrality and balancing selection as described in Methods and compared the overlap between the distributions of neutral and selected Tajima's D and θ_w values for different window sizes (Fig. 2). The amount of overlap is inversely related to the power. The more the two distributions overlap, the less ability we have to distinguish selected from putatively neutral regions. We observed for larger window sizes a larger

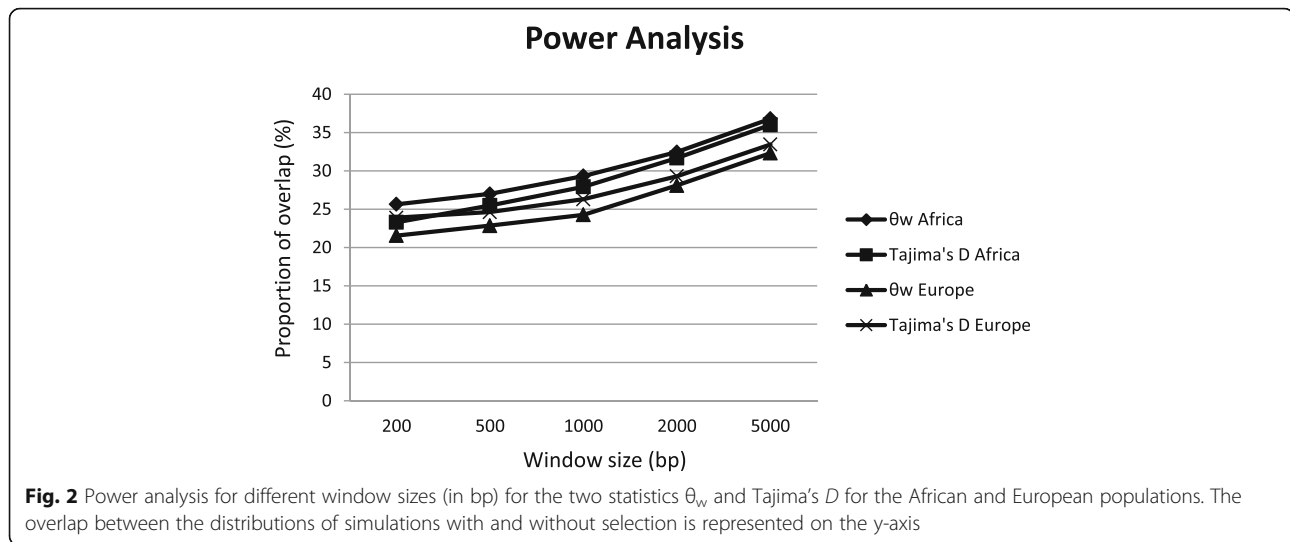
overlap between the two distributions and thus a lower power to distinguish selection from neutrality. The overlap for the 1-kb window is slightly larger than for the 0.2- and 0.5-kb windows and smaller than for the 2- and 5-kb ones. Moreover, the largest difference in power is between 1 kb and 2 kb, which should make 1 kb a good choice. Our choice of window size for subsequent analysis was also influenced by the fact that in Fig. 2 we show perfectly simulated data whereas in our genome scan data may be missing such that the windows behave smaller than the corresponding simulated windows (on average around 10% of the data are missing). Therefore, we continued our analyses with the results obtained from the scan with a window size of 1 kb, even though smaller windows performed slightly better for simulated data.

We observed for the whole genome a mean θ_w averaged over all windows of 0.0088 in Africa and 0.0033 in Europe (Table 1). The diversity in the European populations of *D. melanogaster* is reduced on each chromosome arm compared to the African populations, which agrees with previous estimates [44]. Mean Tajima's D is -0.5605 in Africa and -0.4111 in Europe for the whole genome. However, the X chromosome has a reduced Tajima's D in Africa (Tajima's $D = -0.8979$) compared to the autosomal chromosomes and, on the contrary, an elevated Tajima's D in Europe (Tajima's $D = -0.2968$). Finally, as previously noticed by Glinka et al. [69], the variance of Tajima's D is much higher in Europe than in Africa (Table 1), which indicates that the European population has been undergoing a bottleneck.

Candidate genes

Since the demographic history of a population can mimic selection (e.g. in the case of a bottleneck), we performed coalescent simulations under the demographic model that best fits the observed data for each population (A. Wollstein, unpublished results). Clearly, the demographic models that we estimated do not represent exactly the history of our populations. Indeed their history is likely more complex but the models fit the data sufficiently well to be used as a null model to reduce the number of false positives. Only windows significantly different from the overall patterns observed in the genome (taking into account the demographic history) are candidates. Then we searched for significantly elevated values of θ_w and Tajima's D compared to the distributions obtained by the neutral coalescent simulations that included demography.

We detected 171 candidate windows (of 1 kb each) for the European population and 60 for the African population with significant signatures of balancing selection. Interestingly, in the European population 77 candidate windows are on the X chromosome whereas in the African population we detected only two candidate



windows on this chromosome. Then, we identified the genes overlapping with our candidate windows. Occasionally, several genes (up to three for one window) overlapped with the same window. We observed 20 candidate windows in the European population with two genes present (and one with three genes), and eight windows in the African populations. In this case, it was difficult to identify the specific gene under balancing selection. We found 141 (Additional file 1: Table S1) and 45 (Additional file 1: Table S2) candidate genes in the European and African populations, respectively.

We investigated this discrepancy in the number of candidate genes between both populations. In the European population the candidate genes are much larger than in the African population (the average size of the genes is 27.5 kb in Europe and 11.3 kb in Africa). To understand this observation, we studied the genomic

distributions of the candidate genes. The European genes are restricted to regions of intermediate to high recombination rates, in which variation is less suppressed by linked selection (discussed above). The 58 candidate genes on the X are distributed over about 20 Mb, whereas those on the autosome arms are located in narrower regions: 16 genes in about 9 Mb on 3R, 16 genes in 13.5 Mb on 3L, 28 genes in 15 Mb on 2R, and 23 genes in 12 Mb on 2L. This pattern may be explained to some extent by the higher average recombination rate on chromosome arm 2R and X compared to the other chromosome arms [59]. The excess of large genes on the X compared to the autosome arms, however, cannot be explained by recombination ("large" is defined somewhat arbitrarily as >10 kb, but other definitions lead to similar conclusions). While 8–10 genes on each autosomal arm are large, 35 are large on the X.

Table 1 Statistical values for the mean of θ_w and Tajima's D for each chromosome arm and population

Population	Chr.	θ_w			Tajima's D		
		5%	mean	95%	5%	mean	95%
Africa	2 L	0.0028	0.0095	0.0173	-1.4842	-0.4714	0.6342
	2R	0.0022	0.0086	0.0167	-1.5752	-0.5905	0.4894
	3 L	0.0017	0.0088	0.0174	-1.5104	-0.5035	0.6523
	3R	0.0015	0.0069	0.0141	-1.4119	-0.3390	0.8357
	X	0.0033	0.0100	0.0174	-1.7449	-0.8979	0.0263
	Average	0.0102	0.0088	0.0166	-1.2794	-0.5605	0.5980
Europe	2 L	0.0013	0.0034	0.0073	-1.5795	-0.4262	1.1724
	2R	0.0010	0.0036	0.0082	-1.5058	-0.3851	1.1714
	3 L	0.0007	0.0037	0.0087	-1.5849	-0.4517	1.1032
	3R	0.0007	0.0030	0.0071	-1.5830	-0.4957	1.1498
	X	0.0003	0.0030	0.0069	-1.7982	-0.2968	1.4504
	Average	0.0008	0.0033	0.0076	-1.6103	-0.4111	1.1075

This suggests that the excess of large genes on the X in the European population may be due to false positives, which by chance hit longer genes more often than shorter ones. Protein-coding genes generally tend to be longer on the X chromosome compared to autosomes (with average lengths of 8.2 kb vs. 6.1 kb). This may partly explain the observed size distribution between X and autosomes, but needs to be further discussed below.

The average size of the African candidate genes of 11.3 kb is also larger than the average gene length of *D. melanogaster* (which is 6.5 kb for protein-coding genes). This indicates that false positives may play a role in this dataset as well (although to a lesser extent, as only seven out of 45 genes are longer than 10 kb).

As mentioned before 43 genes in Europe and 16 genes in Africa are uncertain due to the fact that they are in the same candidate window. Three genes (*fry*, *chm* and *CG42389*) show signals of balancing selection in both populations (Table 2). However, these signals were

detected in two different regions (windows) of the genes (see e.g. Fig. 3 for *chm*). Selection acting in both populations is characteristic for long-term balancing selection, which agrees with our expectation when selection predates the split of the two populations. On the other side, candidate genes with significant statistics only in one population have likely been under more recent balancing selection.

The number of candidate genes detected in the two populations is very different: 45 in the African population and 141 in the European population. The differences between both populations are even more striking on the X chromosome where we found 58 candidate genes (overlapping with 77 windows) in Europe and only one candidate gene (overlapping with two windows) in Africa. In converse, this would mean that on the autosomes the total numbers are relatively similar: 44 in Africa and 83 in Europe. The disparity in the number of candidate genes between populations is unlikely strongly

Table 2 List of the best candidate genes for the European and African populations with a p -value $< 10^{-4}$ for θ_w and Tajima's D

Population	FBgn number	Gene name	Chromosome	θ_w	Tajima's D	
Europe	FBgn0039004	<i>Nup133</i>	3R	0.0029	2.5160	
	FBgn0263986	<i>cd</i>				
	FBgn0039536	<i>unc80</i>	3R	0.0028	2.0467	
	FBgn0001316	<i>klar</i>	3 L	0.0053	2.1501	
	FBgn0265988	<i>mv</i>	3 L	0.0046	2.5476	
	FBgn0085428	<i>Nox</i>	2R	0.0064	2.1896	
	FBgn0002543	<i>lea</i>	2 L	0.0026	2.4560	
	FBgn0031424	<i>VGlut</i>	2 L	0.0040	2.2109	
	FBgn0085424	<i>nub</i>	2 L	0.0064	2.3335	
	FBgn0086899	<i>tlk</i>	X	0.0044	2.2383	
	FBgn0029504	<i>CHES-1-like</i>	X	0.0046	2.4145	
	FBgn0030244	<i>CG2157</i>	X	0.0069	2.3996	
	FBgn0030245	<i>CG1637</i>				
	FBgn0030286	<i>CG1657</i>	X	0.0041	2.0603	
	FBgn0267001	<i>Ten-a</i>	X	0.0051	2.3024	
	FBgn0030412	<i>Tomosyn</i>	X	0.0049	2.2223	
	FBgn0030466	<i>CG15744</i>	X	0.0056	2.2758	
			X	0.0058	2.3005	
	Africa	FBgn0040076	<i>primo-2</i>	3R	0.0105	2.2764
		FBgn0040077	<i>primo-1</i>			
FBgn0039519		<i>Cyp6a18</i>	3R	0.0130	2.1106	
FBgn0036173		<i>CG7394</i>	3 L	0.0103	2.1201	
FBgn0261853		<i>CG42782</i>	2R	0.0205	1.9016	
FBgn0031910		<i>CG15818</i>	2 L	0.0121	1.8187	
FBgn0028387		<i>chm</i>	2 L	0.0080	2.5511	
FBgn0028899		<i>CG31817</i>	2 L	0.0144	1.8100	
FBgn0259735		<i>CG42389</i>	2 L	0.0202	1.1303	

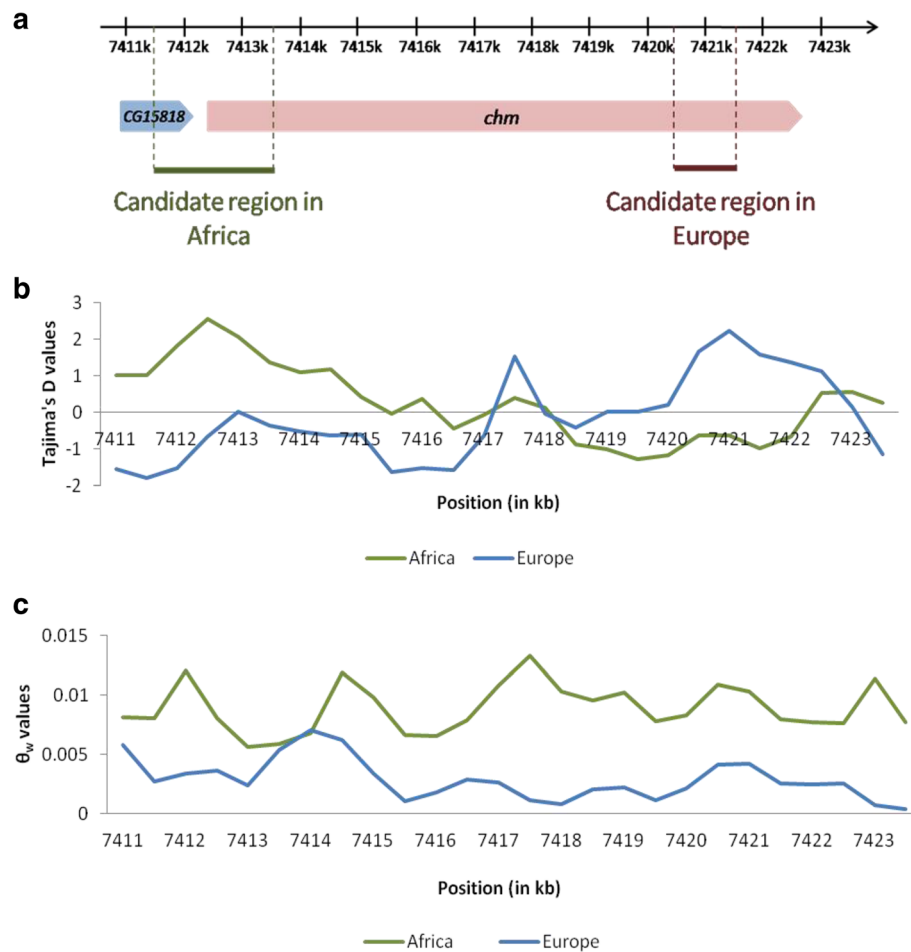


Fig. 3 Map of the genes *CG15818* and *chm*. In **a**, the green bar represents the region of interest in the African population and the red bar represents the region of interest in the European population. In the case of the African population, the region of interest is larger as two contiguous candidate windows are significant. The Tajima's *D* (**b**) and θ_w (**c**) values are plotted for a 1-kb sliding window across the genes *CG15818* and *chm* for both the European and African populations. Plot of θ_w for a 1-kb window across the gene *CG15818* and *chm* for the European and African populations. The x-axis represents the position on the chromosome and the y-axis, the values of θ_w . Plot of Tajima's *D* for a 1-kb window across the gene *CG15818* and *chm* for the European and African populations. The x-axis represents the position on the chromosome and the y-axis, the values of Tajima's *D*. Map of the genes *CG15818* and *chm*. the green bar represents the region of interest in the African population and the red bar represents the region of interest in the European population

influenced by differences in statistical power as the proportion of overlap between simulated selected and neutral data in Africa for a 1-kb window is not much different from Europe (Fig. 2). However, in Africa the proportion of overlap is slightly higher, which might indicate a lower power than in Europe. Many genes significant in Europe show high values of Tajima's *D* and θ_w in Africa as well but they do not reach statistical significance in this population. In Europe, all the significant windows where we found our candidate genes have also significant θ_w values in Africa, but their Tajima's *D* values are not significant. In the African population, we observed 13 genes (same windows in Africa and Europe) with a Tajima's *D* > 0 (*p*-values are going from 0.24 to 0.82) for the X chromosome and 18 candidate genes

with a Tajima's *D* > 0.5 (*p*-values = 1) for the autosomal chromosomes.

To summarize, taking into account possible false positives the number of candidate genes on the X (without the excess of large genes) converges toward the numbers of candidate genes on the autosome arms in the European population. This is particularly the case for chromosome arm 2R. Furthermore, the overall number of candidate genes in the European population is no longer much greater than that of the African population and the numbers on the autosomes of both populations are more similar than reported above. On the other hand, the African X and the European X still differ greatly in the number of candidate genes, which might be due to an increase of false positives on the European X (discussed below).

GO terms

A GO analysis was performed on significant genes to determine the groups of terms enriched for both the European and the African populations. Groups are based on GO hierarchy or on the kappa score [64], which is based on the overlapping genes (within categories). The name of the group is determined by the most significant term of the group. The European population is enriched for many terms, 41 biological function categories are enriched and are grouped in eight terms (see Additional file 1: Table S3). We observed three groups with many GO terms and consequently have a high number of genes including shared genes between several GO terms (Additional file 1: Table S3). Additionally, we observed three GO terms enriched within the molecular process and cellular component categories each (Additional file 1: Table S4). Finally, eight pathways from the KEGG [65] and Reactome [66] databases were enriched for candidate genes (Additional file 1: Table S4). However, since half of the European candidate genes are located on the X chromosome and there is evidence that these genes may contain an increased number of false positives we repeated our GO analysis with autosomal genes only. With this reduced dataset we only found four enriched GO terms under biological process (*mushroom body development*, *regulation of circadian sleep/wake cycle*, *organophosphate metabolic process* and *nucleotide metabolic process*) and *transcription cofactor activity* under molecular process. All five of these terms were also significant in the original analysis. Analyzing the complete African candidate gene set we found only two GO terms enriched (*aspartic-type endopeptidase activity* and *surfactant metabolism*) for all categories. However, this result might be an artifact since the three genes enriched for these terms (*CG31928*, *CG31926* and *CG33128*) are physically adjacent, which might explain why they collectively show a signal of balancing selection.

Then we examined in greater detail the more extreme candidate genes (p -value $< 10^{-4}$ for θ_w and Tajima's D after multiple testing corrections). In the European population, we found 17 genes (Table 2), which include genes involved in different functions such as circadian rhythm (*unc80*), cell migration (*klar*), neuronal development (*lea* and *Ten-a*),

neurogenesis and memory (*Tomosyn*), and chemical synaptic transmission (*VGlut*). We also found genes related to immunity (*Nox*, *nub* and *tlk*) or involved in phagocytosis (*mv* and *CHES-1-like*). The genes *cd* and *Nup133* are located in the same genomic region; *cd* is involved in several processes including response to oxidative stress, while *Nup133* is involved in nucleocytoplasmic transporter activity. Interestingly, there is evidence that *Nup133* may also have undergone recurrent adaptive evolution in *D. simulans* and *D. melanogaster* [70]. Candidate genes with unknown functions have been also found (*CG2157*, *CG1637*, *CG1657* and *CG15744*). Concerning the African population, 9 genes (Table 2) are highly significant (p -values $< 10^{-4}$). However, the genes *primo-1* and *primo-2* are located in the same region. Their proteins have the same function. The genes *CG15818* and *chm* are also localized in the same region with two significant windows adjacent. The gene *chm* is involved in 15 biological processes such as neuron differentiation, development (larvae, pupal and wing), histone acetylation and regulation of metabolic processes. The gene *Cyp6a18* has an oxidoreductase activity. However, the function of the other genes remains unknown. Moreover, two of the best candidate genes (*chm* and *CG42389*) in Rwanda are also significant in Europe (Table 3). In addition, the gene *fry* is also shared by the two populations.

Discussion

Some recent studies have found new examples of genes under balancing selection in *D. melanogaster*. For instance, Sato et al. [37] detected balancing selection in core promoter regions. Unckless et al. [36] found evidence of alleles maintained by balancing selection in genes encoding antimicrobial peptides. Nonetheless, examples of genes under balancing selection in *D. melanogaster* are still scarce, and no genome-wide analysis for balancing selection has been done in this species with the exception of our own previous preliminary work [8]. Based on the availability of a wealth of NGS data we approached the difficulties of detecting balancing selection in the genome using two common statistics (high genetic diversity and

Table 3 List of candidate genes shared by the African and European populations and the values of the significant statistics observed (p -value < 0.05) for θ_w and Tajima's D

FBgn number	Gene name	Chromosome	Population	θ_w	Tajima's D
FBgn0016081	<i>fry</i>	3 L	Europe	0.0051 (0.0121)	2.1338 ($< 10^{-4}$)
			Africa	0.0103 ($< 10^{-4}$)	1.8448 (0.0219)
FBgn0028387	<i>chm</i>	2 L	Europe	0.0042 (0.0285)	2.2383 (0.0231)
			Africa	0.008 ($< 10^{-4}$)	2.5511 ($< 10^{-4}$)
FBgn0259735	<i>CG42389</i>	2 L	Europe	0.0025 (0.0469)	2.3025 ($< 10^{-4}$)
			Africa	0.0202 ($< 10^{-4}$)	1.1303 ($< 10^{-4}$)

The p -values of the statistics are indicated in the parentheses

intermediate-frequency polymorphism), without specifying a certain type of balancing selection. These two features are characteristics of balancing selection and cannot be confounded by other types of selection such as purifying and positive directional selection. Furthermore, we accounted for demography in our methods. Thus we followed a similar approach as Andrés et al. [4] rather than using a model-based method, such as DeGiorgio et al. [71].

In total, we found 183 candidate genes: 141 in the European population and 45 in the African one, with only three genes overlapping between both populations. This overlap is much smaller than found in humans between a Europe-derived and an Africa-derived population [4], which may be explained by the much longer separation time (in generations) between the two fly populations. However, even if the p -values are not significant, we observed many genes with high estimates of θ_w and Tajima's D shared between both populations. The small overlap of significant genes might therefore be due to our statistical approach being conservative.

Although we fitted demographic models to the data for both the African and European populations, we found evidence for false positives in our set of candidate genes. More false positives appear to be present in the European set of candidate genes (in particular on the X chromosome). Inaccuracies in the estimation of demographic parameters may be the primary reason for this problem. We estimated demography for the X and the autosomes separately, based on the SFS at neutral sites [52, 53]. Since the European X chromosome harbors the lowest amount of variability the estimated demography might have been less precise for the European X compared to the European autosomes and the African X and autosomes, leading to an elevation of false positives.

The discrepancy between the X chromosomes of both populations is particularly large. We observed only one candidate gene on the African X, but 20–30 on the European one (after correcting for the excess of large genes). As mentioned above, all significant windows on the X where we found our candidate genes in Europe have also significant θ_w values in Africa, but their Tajima's D values are not significant. The reason for this may be as follows. As already Glinka et al. [69] noticed, the variance of the European X is higher than that under standard neutrality, and lower in Africa (see also Table 1). Therefore, scaling Tajima's D with the standard neutral variance may have led to too many candidates in Europe and/or too few in Africa.

Concerning the functions of genes, we observed enrichment in many biological processes in the European population. When we repeated the analysis for autosomal genes only, we were, however, only left with five GO terms. This reduction might be because of an overrepresentation of certain functions on the X chromosome,

but could also be purely due to reduced statistical power given the lower number of genes in the autosomal dataset. GO terms that were consistently detected include ones related to circadian behavior and the development of mushroom bodies. Mushroom bodies play a major role in olfactory learning and memory, but have also been shown to be involved in other behavioral traits and the regulation of sleep [72, 73]. Even though these GO terms seem to be closely related their statistical significance is driven by different sets of genes (Additional file 1: Table S3). Candidate genes related to neuronal development and behavior are particularly interesting, as evidence of balancing selection in genes associated with neuromuscular junction development and behavior [35] has previously been reported. For the African population, only two GO terms are enriched and the three corresponding genes lie in the same genomic region.

Andrés et al. [4] performed a genome-wide analysis to detect balancing selection in humans using a similar method. They found a relatively high number of candidate genes related to immunity. Indeed, genes involved in immune defense are assumed to often evolve under balancing selection. However, we did not find an enrichment of genes involved in immunity. Only a few candidate genes of our scan are involved in immunity, such as *Ser* and *tlk* genes in Europe and *Dif* gene in Africa. However, we detected four genes involved in wound healing (*Cad96Ca*, *Fhos*, *Rok* and *Hml*) in Europe. Even if the majority of our candidate genes seem to be involved in other functions, they could also play a role during an infection. It has been shown that the immune system is linked to circadian rhythms [74]. Clock genes may be involved in the fight against bacterial invasion [75, 76]. For example, the ortholog of our candidate gene *cry* has been shown to up-regulate pro-inflammatory cytokine gene expression during an infection in mice [77]. Moreover, an enrichment of genes involved in extracellular matrix interaction (Additional file 1: Table S4) has been found. Andrés et al. [4] also detected candidate genes involved in the extracellular matrix. Concerning the examples found previously in *D. melanogaster* [35–37], we did not confirm any of these examples although we observed some genes with similar functions such as oxidation-reduction process and olfactory behavior. Furthermore, Comeron et al. [35] found a P450 gene (*Cyp6a16*) as candidate gene for balancing selection, which was also detected in our search. The fact that we did not find overlap with other studies might be explained by the difference in the methods [35] and the samples, which are not exactly the same. Moreover, in the studies [36] and [37], the authors look for balancing selection only in a small part of the genome of *D. melanogaster*. We also find little overlap when we compare the results to our earlier study [8]: only one gene (*CG18208*) is shared for the African candidate

genes. This discrepancy might again be explained by our different methodology and different dataset. In our previous study, we preselected windows in which the observed θ_w and Tajima's D values jointly fell within the 95th percentile of the empirical distribution for each chromosome. Consequently, many candidate windows were removed. Moreover, in our current study we performed rigorous multiple testing correction, which led to many overlapping genes losing significance after correction.

We found 17 extreme genes (p -value $< 10^{-4}$ for θ_w and Tajima's D) in the European population and 9 in the African population. Among these genes, some are related to immunity. The gene *tlk* has been reported to be involved in the humoral immune response [78]. The gene *Nox* has a role in both regulation of the gut microbiota and resistance to infection by inducing the generation of reactive oxygen species [79]. The gene *nub* is a negative regulator of antimicrobial peptide biosynthesis. It represses the expression of NF- κ B-dependent immune genes and increases the tolerance to gut microbiota [80]. The gene *CHES-1-like* is required for phagocytosis of the fungal pathogen *Candida albicans* [81]. *CG15818* has been shown to be down-regulated in flies infected by the Nora virus [82]. The gene *Cyp6a18* may play a role in the metabolism of insect hormones and in the resistance to insecticides. Concerning the other genes, some are involved in neural function. The gene *Ten-a* is involved in neuronal development and also in the establishment of neuron connectivity [83]. The gene *Tomosyn* plays a role in the regulation of behavioral plasticity and memory [84] and *VGlut* is involved in neuromuscular junctions. The genes *primo-1* and *primo-2* have both a function in dephosphorylation and play a role in different functions such as neurogenesis [85]. Finally, *chm* enhances JNK signaling during metamorphosis and thorax closure and acts positively in the JNK-dependent apoptotic pathway [86]. This gene is also required for the maintenance of Hox gene silencing by PolyComb group proteins [87]. It is interesting that many genes have a role in the nervous system, which is known to be connected to immunity in insects [88]. While many examples of balancing selection have been found in immune genes, genes involved in other functions might be under this type of selection due to temporal changes in the environment like fluctuations between seasons [89].

Thus, of the extreme genes, many seem to be related to immunity or to neuronal function. Of course, it will be interesting to examine these genes in more detail. In addition to our analysis, it would be informative to combine our summary statistics with other estimators, such as linkage disequilibrium to detect evidence for recent balancing selection, and species comparisons to find trans-species polymorphism as signatures of ancient balancing selection.

Conclusion

We identified candidate genes under balancing selection in two populations of *D. melanogaster*: 141 in the European population and 45 in the African one. The difference between both populations is mainly due to an excess of candidate genes on the European X chromosome, which is likely due to false positives. Correcting for this effect reduces the difference between both populations considerably. Among the candidate genes detected in the European population there is an overrepresentation of genes involved in neuronal development and circadian rhythm. Other genes are involved in immunity including the top candidates. These top genes are also involved in behavioral plasticity, memory, neuromuscular junctions or neurogenesis.

Additional file

Additional file 1: Table S1. List of candidate genes for the European population and the values of the significant statistics observed (p -value < 0.05) for a 1-kb window. The p -values of the statistics are indicated in the parentheses. **Table S2:** List of candidate genes for the African population and the values of the significant statistics observed (p -value < 0.05) for a 1-kb window. The p -value of the statistics is indicated in the brackets. **Table S3:** List of enriched GO terms and the genes grouped under this term for the European population in biological processes. The GO term shown in bold is the name of the group (the most significant term of the group). **Table S4:** List of enriched GO terms and the genes grouped under this term for the European population for molecular function, cellular component and KEGG and Reactome pathways. (DOCX 59 kb)

Abbreviations

FDR: False-discovery rate; GO: Gene ontology; MHC: Major histocompatibility complex; NGS: Next-generation sequencing; SFS: Site frequency spectrum; SNP: Single nucleotide polymorphism

Acknowledgements

We would like to thank three anonymous reviewers and the editor Ryan Gutenkunst for very helpful suggestions on our paper.

Funding

This work was supported by the DFG Priority Program 1399 (grant HU 1776/1-2 to SH and WS).

Authors' contributions

MC, WS, SH, AW, DZ, and VB wrote the manuscript. MC analyzed the data. DZ and AW estimated the demographic history. VB and MC did the GO analysis. All authors have read and approved the final manuscript.

Competing interests

The authors declare that they have no competing interests.

Consent for publication

Not applicable.

Ethics approvals and consent to participate

Not applicable.

Author details

¹Section of Evolutionary Biology, Department of Biology II, University of Munich (LMU), Grosshaderner Str. 2, 82152 Planegg-Martinsried, Germany. ²Center of Food and Life Sciences Weihenstephan, Technische Universität München, 85354 Freising, Germany. ³Natural History Museum Berlin, 10115 Berlin, Germany.

Received: 13 August 2016 Accepted: 17 December 2016

Published online: 13 January 2017

References

- Dobzhansky T. A review of some fundamental concepts and problems of population genetics. Cold Spring Harb Symp Quant Biol. 1955;20:1–15.
- Soejima M, Tachida H, Tsuneoka M, Takenaka O, Kimura H, Koda Y. Nucleotide sequence analyses of human complement 6 (C6) gene suggest balancing selection. Ann Hum Genet. 2005;69(Pt 3):239–52.
- Grigороva M, Rull K, Laan M. Haplotype structure of FSHB, the beta-subunit gene for fertility-associated follicle-stimulating hormone: possible influence of balancing selection. Ann Hum Genet. 2007;71(Pt 1):18–28.
- Andrés AM, Hubisz MJ, Indap A, Torgerson DG, Degenhardt JD, Boyko AR, Gutenkunst RN, White TJ, Green ED, Bustamante CD, et al. Targets of balancing selection in the human genome. Mol Biol Evol. 2009;26(12):2755–64.
- Thomas JC, Godfrey PA, Feldgarden M, Robinson DA. Candidate targets of balancing selection in the genome of *Staphylococcus aureus*. Mol Biol Evol. 2012;29(4):1175–86.
- Zhang XH, Dai ZX, Zhang GH, Han JB, Zheng YT. Molecular characterization, balancing selection, and genomic organization of the tree shrew (*Tupaia belangeri*) MHC class I gene. Gene. 2013;522(2):147–55.
- Amambua-Ngwa A, Tetteh KK, Manske M, Gomez-Escobar N, Stewart LB, Deerhake ME, Cheeseman IH, Newbold CI, Holder AA, Knuepfer E, et al. Population genomic scan for candidate signatures of balancing selection to guide antigen characterization in malaria parasites. PLoS Genet. 2012;8(11):e1002992.
- Croze M, Zivkovic D, Stephan W, Hutter S. Balancing selection on immunity genes: review of the current literature and new analysis in *Drosophila melanogaster*. Zoology. 2016;119:322–9.
- Bamshad M, Wooding SP. Signatures of natural selection in the human genome. Nat Rev Genet. 2003;4(2):99–111.
- Hedrick PW. What is the evidence for heterozygote advantage selection? Trends Ecol Evol. 2012;27(12):698–704.
- Charlesworth D, Awadalla P. Flowering plant self-incompatibility: the molecular population genetics of *Brassica* S-loci. Heredity. 1998;81(Pt 1):1–9.
- Charlesworth D. Balancing selection and its effects on sequences in nearby genome regions. PLoS Genet. 2006;2(4):e64.
- Hedrick PW. Population genetics of malaria resistance in humans. Heredity. 2011;107(4):283–304.
- Klein J. Origin of major histocompatibility complex polymorphism: the trans-species hypothesis. Hum Immunol. 1987;19(3):155–62.
- Takahata N, Nei M. Allelic genealogy under overdominant and frequency-dependent selection and polymorphism of major histocompatibility complex loci. Genetics. 1990;124(4):967–78.
- Cutrera AP, Lacey EA. Trans-species polymorphism and evidence of selection on class II MHC loci in *tuco-tucos* (*Rodentia: Ctenomyidae*). Immunogenetics. 2007;59(12):937–48.
- Eizaguirre C, Lenz TL, Kalbe M, Milinski M. Rapid and adaptive evolution of MHC genes under parasite selection in experimental vertebrate populations. Nat Commun. 2012;3:621.
- Sutton JT, Robertson BC, Grueber CE, Stanton JA, Jamieson IG. Characterization of MHC class II B polymorphism in bottlenecked New Zealand saddlebacks reveals low levels of genetic diversity. Immunogenetics. 2013;65(8):619–33.
- Stahl EA, Dwyer G, Mauricio R, Kreitman M, Bergelson J. Dynamics of disease resistance polymorphism at the Rpm1 locus of *Arabidopsis*. Nature. 1999;400(6745):667–71.
- Schierup MH, Mikkelsen AM, Hein J. Recombination, balancing selection and phylogenies in MHC and self-incompatibility genes. Genetics. 2001;159(4):1833–44.
- Rose LE, Grzeskowiak L, Hörger AC, Groth M, Stephan W. Targets of selection in a disease resistance network in wild tomatoes. Mol Plant Pathol. 2011;12(9):921–7.
- Ebert D. Host-parasite coevolution: insights from the daphnia-parasite model system. Curr Opin Microbiol. 2008;11(3):290–301.
- Tellier A, Moreno-Gamez S, Stephan W. Speed of adaptation and genomic footprints of host-parasite coevolution under arms race and trench warfare dynamics. Evolution. 2014;68(8):2211–24.
- Lazzaro BP. Natural selection on the *Drosophila* antimicrobial immune system. Curr Opin Microbiol. 2008;11(3):284–9.
- Obbard DJ, Welch JJ, Kim KW, Jiggins FM. Quantifying adaptive evolution in the *Drosophila* immune system. PLoS Genet. 2009;5(10):e1000698.
- Asthana S, Schmidt S, Sunyaev S. A limited role for balancing selection. Trends Genet. 2005;21(1):30–2.
- Bubb KL, Bovee D, Buckley D, Haugen E, Kibukawa M, Paddock M, Palmieri A, Subramanian S, Zhou Y, Kaul R, et al. Scan of human genome reveals no new loci under ancient balancing selection. Genetics. 2006;173(4):2165–77.
- Leffler EM, Gao Z, Pfeifer S, Segurel L, Auton A, Venn O, Bowden R, Bontrop R, Wall JD, Sella G, et al. Multiple instances of ancient balancing selection shared between humans and chimpanzees. Science. 2013;339(6127):1578–82.
- Linnenbrink M, Johnsen JM, Montero I, Brzezinski CR, Harr B, Baines JF. Long-term balancing selection at the blood group-related gene B4galnt2 in the genus *Mus* (*Rodentia: Muridae*). Mol Biol Evol. 2011;28(11):2999–3003.
- Tian D, Araki H, Stahl E, Bergelson J, Kreitman M. Signature of balancing selection in *Arabidopsis*. Proc Natl Acad Sci U S A. 2002;99(17):11525–30.
- Bakker EG, Toomajian C, Kreitman M, Bergelson J. A genome-wide survey of R gene polymorphisms in *Arabidopsis*. Plant Cell. 2006;18(8):1803–18.
- Hörger AC, Ilyas M, Stephan W, Tellier A, van der Hoorn RA, Rose LE. Balancing selection at the tomato RCR3 Guardee gene family maintains variation in strength of pathogen defense. PLoS Genet. 2012;8(7):e1002813.
- Juneja P, Lazzaro BP. Haplotype structure and expression divergence at the *Drosophila* cellular immune gene eater. Mol Biol Evol. 2010;27(10):2284–99.
- Langley CH, Stevens K, Cardeno C, Lee YC, Schrider DR, Pool JE, Langley SA, Suarez C, Corbett-Detig RB, Kolaczowski B, et al. Genomic variation in natural populations of *Drosophila melanogaster*. Genetics. 2012;192(2):533–98.
- Cameron JM. Background selection as baseline for nucleotide variation across the *Drosophila* genome. PLoS Genet. 2014;10(6):e1004434.
- Unckless RL, Howick VM, Lazzaro BP. Convergent balancing selection on an antimicrobial peptide in *Drosophila*. Curr Biol. 2016;26(2):257–62.
- Sato MP, Makino T, Kawata M. Natural selection in a population of *Drosophila melanogaster* explained by changes in gene expression caused by sequence variation in core promoter regions. BMC Evol Biol. 2016;16:35.
- Segurel L, Thompson EE, Flutre T, Lovstad J, Venkat A, Margulis SW, Moysé J, Ross S, Gamble K, Sella G, et al. The ABO blood group is a trans-species polymorphism in primates. Proc Natl Acad Sci U S A. 2012;109(45):18493–8.
- Roux C, Pauwels M, Ruggiero MV, Charlesworth D, Castric V, Vekemans X. Recent and ancient signature of balancing selection around the S-locus in *Arabidopsis halleri* and *A. lyrata*. Mol Biol Evol. 2013;30(2):435–47.
- Hudson RR, Kreitman M, Aguade M. A test of neutral molecular evolution based on nucleotide data. Genetics. 1987;116:153–9.
- Figuerola F, Gunther E, Klein J. MHC polymorphism pre-dating speciation. Nature. 1988;335(6187):265–7.
- Wiuf C, Zhao K, Innan H, Nordborg M. The probability and chromosomal extent of trans-specific polymorphism. Genetics. 2004;168(4):2363–72.
- Stephan W, Li H. The recent demographic and adaptive history of *Drosophila melanogaster*. Heredity. 2007;98(2):65–8.
- Pool JE, Corbett-Detig RB, Sugino RP, Stevens KA, Cardeno CM, Crepeau MW, Duchon P, Emerson JJ, Saelao P, Begun DJ, et al. Population genomics of sub-Saharan *Drosophila melanogaster*: African diversity and non-African admixture. PLoS Genet. 2012;8(12):e1003080.
- Voigt S, Laurent S, Litovchenko M, Stephan W. Positive selection at the polyhomeotic locus led to decreased thermosensitivity of gene expression in temperate *Drosophila melanogaster*. Genetics. 2015;200(2):591–9.
- Langley CH, Crepeau M, Cardeno C, Corbett-Detig R, Stevens K. Circumventing heterozygosity: sequencing the amplified genome of a single haploid *Drosophila melanogaster* embryo. Genetics. 2011;188(2):239–46.
- Frichot E, Mathieu F, Trouillon T, Bouchard G, François O. Fast and efficient estimation of individual ancestry coefficients. Genetics. 2014;196(4):973–83.
- Hutter S, Vilella AJ, Rozas J. Genome-wide DNA polymorphism analyses using VariScan. BMC Bioinformatics. 2006;7:409.
- Watterson GA. On the number of segregating sites in genetical models without recombination. Theor Popul Biol. 1975;7(2):256–76.
- Tajima F. Statistical method for testing the neutral mutation hypothesis by DNA polymorphism. Genetics. 1989;123(3):585–95.
- Ewing G, Hermisson J. MSMS: a coalescent simulation program including recombination, demographic structure and selection at a single locus. Bioinformatics. 2010;26(16):2064–5.
- Zivkovic D, Stephan W. Analytical results on the neutral non-equilibrium allele frequency spectrum based on diffusion theory. Theor Popul Biol. 2011;79:184–91.

53. Parsch J, Novozhilov S, Saminadin-Peter SS, Wong KM, Andolfatto P. On the utility of short intron sequences as a reference for the detection of positive and negative selection in *Drosophila*. *Mol Biol Evol*. 2010;27(6):1226–34.
54. Hutter S, Li H, Beisswanger S, De Lorenzo D, Stephan W. Distinctly different sex ratios in African and European populations of *Drosophila melanogaster* inferred from chromosome-wide SNP data. *Genetics*. 2007;177:469–80.
55. Hudson RR. Generating samples under a Wright-Fisher neutral model of genetic variation. *Bioinformatics*. 2002;18(2):337–8.
56. Li YJ, Satta Y, Takahata N. Paleo-demography of the *Drosophila melanogaster* subgroup: application of the maximum likelihood method. *Genes Genet Syst*. 1999;74(4):117–27.
57. Kim Y, Stephan W. Detecting a local signature of genetic hitchhiking along a recombining chromosome. *Genetics*. 2002;160(2):765–77.
58. Fiston-Lavier AS, Singh ND, Lipatov M, Petrov DA. *Drosophila melanogaster* recombination rate calculator. *Gene*. 2010;463(1–2):18–20.
59. Comeron JM, Ratnappan R, Bailin S. The many landscapes of recombination in *Drosophila melanogaster*. *PLoS Genet*. 2012;8(10):e1002905.
60. Benjamini Y, Hochberg Y. Controlling the false discovery rate: a practical and powerful approach to multiple testing. *J R Stat Soc Ser B Methodol*. 1995;57(1):289–300.
61. Shannon P, Markiel A, Ozier O, Baliga NS, Wang JT, Ramage D, Amin N, Schwikowski B, Ideker T. Cytoscape: a software environment for integrated models of biomolecular interaction networks. *Genome Res*. 2003;13(11):2498–504.
62. Bindea G, Galon J, Mlecnik B. CluePedia Cytoscape plugin: pathway insights using integrated experimental and in silico data. *Bioinformatics*. 2013;29(5):661–3.
63. Bindea G, Mlecnik B, Hackl H, Charoentong P, Tosolini M, Kirilovsky A, Fridman WH, Pages F, Trajanoski Z, Galon J. ClueGO: a Cytoscape plug-in to decipher functionally grouped gene ontology and pathway annotation networks. *Bioinformatics*. 2009;25(8):1091–3.
64. Cohen J. Weighted kappa: nominal scale agreement with provision for scaled disagreement or partial credit. *Psychol Bull*. 1968;70(4):213–20.
65. Kanehisa M, Goto S. KEGG: kyoto encyclopedia of genes and genomes. *Nucleic Acids Res*. 2000;28(1):27–30.
66. Croft D, O’Kelly G, Wu G, Haw R, Gillespie M, Matthews L, Caudy M, Garapati P, Gopinath G, Jassal B, et al. Reactome: a database of reactions, pathways and biological processes. *Nucleic Acids Res*. 2011;39(Database issue):D691–697.
67. Charlesworth B, Morgan MT, Charlesworth D. The effect of deleterious mutations on neutral molecular variation. *Genetics*. 1993;134:1289–303.
68. Stephan W. An improved method for estimating the rate of fixation of favorable mutations based on DNA polymorphism data. *Mol Biol Evol*. 1995;12:959–62.
69. Glinka S, Ometto L, Mousset S, Stephan W, De Lorenzo D. Demography and natural selection have shaped genetic variation in *Drosophila melanogaster*: a multi-locus approach. *Genetics*. 2003;165(3):1269–78.
70. Presgraves D, Stephan W. Pervasive adaptive evolution among interactors of the *drosophila* hybrid inviability gene, *Nup96*. *Mol Biol Evol*. 2007;24(1):306–14.
71. DeGiorgio M, Lohmueller KE, Nielsen R. A model-based approach for identifying signatures of ancient balancing selection in genetic data. *PLoS Genet*. 2014;10:e100456.
72. Heisenberg M. Mushroom body memoir: from maps to models. *Nat Rev Neurosci*. 2003;4(4):266–75.
73. Joiner WJ, Crocker A, White BH, Sehgal A. Sleep in *Drosophila* is regulated by adult mushroom bodies. *Nature*. 2006;441(7094):757–60.
74. Tsoumtsa LL, Torre C, Ghigo E. Circadian control of antibacterial immunity: findings from animal models. *Front Cell Infect Microbiol*. 2016;6:54.
75. Shirasu-Hiza MM, Dionne MS, Pham LN, Ayres JS, Schneider DS. Interactions between circadian rhythm and immunity in *Drosophila melanogaster*. *Curr Biol*. 2007;17(10):R353–355.
76. Lee JE, Ederly I. Circadian regulation in the ability of *Drosophila* to combat pathogenic infections. *Curr Biol*. 2008;18(3):195–9.
77. Narasimamurthy R, Hatori M, Nayak SK, Liu F, Panda S, Verma IM. Circadian clock protein cryptochrome regulates the expression of proinflammatory cytokines. *Proc Natl Acad Sci U S A*. 2012;109(31):12662–7.
78. Kleino A, Valanne S, Ulvila J, Kallio J, Myllymaki H, Enwald H, Stoven S, Poidevin M, Ueda R, Hultmark D, et al. Inhibitor of apoptosis 2 and TAK1-binding protein are components of the *Drosophila* Imd pathway. *EMBO J*. 2005;24(19):3423–34.
79. Buchon N, Silverman N, Cherry S. Immunity in *Drosophila melanogaster*—from microbial recognition to whole-organism physiology. *Nat Rev Immunol*. 2014;14(12):796–810.
80. Dantoft W, Davis MM, Lindvall JM, Tang X, Uvell H, Junell A, Beskow A, Engstrom Y. The Oct1 homolog Nubbin is a repressor of NF-kappaB-dependent immune gene expression that increases the tolerance to gut microbiota. *BMC Biol*. 2013;11:99.
81. Stroschein-Stevenson SL, Foley E, O’Farrell PH, Johnson AD. Identification of *Drosophila* gene products required for phagocytosis of *Candida albicans*. *PLoS Biol*. 2006;4(1):e4.
82. Cordes EJ, Licking-Murray KD, Carlson KA. Differential gene expression related to Nora virus infection of *Drosophila melanogaster*. *Virus Res*. 2013;175(2):95–100.
83. Mosca TJ, Luo L. Synaptic organization of the *Drosophila* antennal lobe and its regulation by the Teneurins. *eLife*. 2014;3:e03726.
84. Chen K, Richlitzki A, Featherstone DE, Schwarzel M, Richmond JE. Tomosyn-dependent regulation of synaptic transmission is required for a late phase of associative odor memory. *Proc Natl Acad Sci U S A*. 2011;108(45):18482–7.
85. Miller DT, Read R, Rusconi J, Cagan RL. The *Drosophila* primo locus encodes two low-molecular-weight tyrosine phosphatases. *Gene*. 2000;243(1–2):1–9.
86. Miotto B, Sagnier T, Berenger H, Bohmann D, Pradel J, Graba Y, Chameau HAT and DRpd3 HDAC function as antagonistic cofactors of JNK/AP-1-dependent transcription during *Drosophila* metamorphosis. *Genes Dev*. 2006;20(1):101–12.
87. Grienenberger A, Miotto B, Sagnier T, Cavalli G, Schramke V, Geli V, Mariol MC, Berenger H, Graba Y, Pradel J. The MYST domain acetyltransferase Chameau functions in epigenetic mechanisms of transcriptional repression. *Curr Biol*. 2002;12(9):762–6.
88. Mallon EB, Brockmann A, Schmid-Hempel P. Immune response inhibits associative learning in insects. *Proc R Soc Lond*. 2003;B 270:2471–2473.
89. Bergland AO, Behrman EL, O’Brien KR, Schmidt PS, Petrov DA. Genomic evidence of rapid and stable adaptive oscillations over seasonal time scales in *Drosophila*. *PLoS Genet*. 2014;10(11):e1004775.

Submit your next manuscript to BioMed Central and we will help you at every step:

- We accept pre-submission inquiries
- Our selector tool helps you to find the most relevant journal
- We provide round the clock customer support
- Convenient online submission
- Thorough peer review
- Inclusion in PubMed and all major indexing services
- Maximum visibility for your research

Submit your manuscript at
www.biomedcentral.com/submit

