

# Systemic inflammatory response syndrome is more associated with bacteremia in elderly patients with suspected sepsis in emergency departments

Hsien-Ling Chou, MD<sup>a</sup>, Shih-Tsung Han, MD, PhD<sup>a</sup>, Chun-Fu Yeh, MD<sup>b</sup>, I-Shaing Tzeng, PhD<sup>a</sup>, Tsung-Han Hsieh, MS<sup>c</sup>, Chin-Chieh Wu, PhD<sup>d</sup>, Jen-Tse Kuan, MD<sup>e</sup>, Kuan-Fu Chen, MD, PhD<sup>d,f,g,\*</sup>

## Abstract

Early diagnosis of bacteremia for patients with suspected sepsis is 1 way to improve prognosis of sepsis. Systemic inflammatory response syndrome (SIRS) has long been utilized as a screening tool to detect bacteremia by front-line healthcare providers. The value of SIRS to predict bacteremia in elderly patients ( $\geq 65$  years) with suspected sepsis has not yet been examined in emergency departments (EDs).

We aimed to evaluate the performance of SIRS components in predicting bacteremia among elderly patients in EDs.

We retrospectively evaluated patients with suspected sepsis and 2 sets of blood culture collected within 4 hours after admitting to ED in a tertiary teaching hospital between 2010 and 2012. Patients were categorized into 3-year age groups: young (18–64 years), young-old (65–74 years), and old patients ( $\geq 75$  years). Vital signs and Glasgow Coma Scale with verbal response obtained at the triage, comorbidities, sites of infection, blood cultures, and laboratory results were retrieved via the electronic medical records.

A total of 20,192 patients were included in our study. Among them, 9862 (48.9%) were the elderly patients (young-old and old patients), 2656 (13.2%) developed bacteremia. Among patients with bacteremia, we found the elderly patients had higher SIRS performance (adjusted odds ratio [aOR]: 2.40, 95% confidence interval [CI]: 1.90–3.03 in the young-old and aOR: 2.66, 95% CI: 2.19–3.23 in the old). Fever at the triage was most predictive of bacteremia, especially in the elderly patients (aOR: 2.19, 95% CI: 1.81–2.65 in the young-old and aOR: 2.27, 95% CI: 1.95–2.63 in the old), and tachypnea was not predictive of bacteremia among the elderly patients (all  $P > 0.2$ ).

The performance of SIRS to predict bacteremia was more suitable for elderly patients in EDs observed in this study. The elderly patients presented with more fever and less tachypnea when they had bacteremia.

**Abbreviation:** aOR = adjusted odds ratio, CCI = Charlson comorbidity index, CI = confidence interval, ED = emergency department, EMRs = electronic medical records, SIRS = systemic inflammatory response syndrome.

**Keywords:** bacteremia, elderly, emergency department, old, systemic inflammatory response syndrome, young-old

## 1. Introduction

Bacteremia is a major issue in daily practice at the critical care settings such as emergency departments (EDs). Diagnosis of bacteremia with early adequate antibiotic use can increase survival in patients with sepsis.<sup>[1]</sup> In order to replace the time-consuming conventional blood culture methods, many studies

attempted to develop predictive models or biomarkers to risk stratify or early detect patients with bacteremia,<sup>[2–7]</sup> and some of them focused on the elderly patients.<sup>[8,9]</sup> Due to the growing population over the age of 65 years worldwide, special attentions for elderly patients ( $\geq 65$  years) is necessary. Early detection for bacteremia in elderly patients is more difficult than in younger

Editor: Dimitrios Paraskevis.

S-TH, C-FY, and I-ST have contributed equally to the article.

**Funding/support:** This study was supported by the National Science Council and Chang Gung Memorial Hospital in Taiwan (100-2314-B-182A-038-MY3, CMRPG2C0202, CIRPG2E0022, CMRPG2B0124, CMRPG2B0273, CMRPG2B0373, and CPRPG2D0012).

The funders had no role in study design, data collection and analysis, decision to publish, or preparation of the manuscript.

The authors have no conflicts of interest to disclose.

<sup>a</sup> Department of Emergency Medicine, Chang-Gung Memorial Hospital, Linkou, <sup>b</sup> Division of Infectious Diseases, Department of Internal Medicine, Chang Gung Memorial Hospital, Linkou, Chang Gung University College of Medicine, <sup>c</sup> Tissue Bank, Chang Gung Memorial Hospital, Linkou, Taoyuan, <sup>d</sup> Department of Emergency Medicine, Chang Gung Memorial Hospital, Keelung, <sup>e</sup> Department of Emergency Medicine, Chang Gung Memorial Hospital, Taipei, <sup>f</sup> Community Medicine Research Center, Chang Gung Memorial Hospital, Keelung, <sup>g</sup> Clinical Informatics and Medical Statistics Research Center, Chang Gung University, Taoyuan, Taiwan.

\* Correspondence: Kuan-Fu Chen, Clinical Informatics and Medical Statistics Research Center, Chang Gung University, No. 5, Fusing St, Gueishan Township 333, Taoyuan County, Taiwan (e-mail: kfchen@cgmh.org.tw)

Copyright © 2016 the Author(s). Published by Wolters Kluwer Health, Inc. All rights reserved.

This is an open access article distributed under the Creative Commons Attribution-NoDerivatives License 4.0, which allows for redistribution, commercial and non-commercial, as long as it is passed along unchanged and in whole, with credit to the author.

Medicine (2016) 95:49(e5634)

Received: 8 April 2016 / Received in final form: 16 August 2016 / Accepted: 17 November 2016

<http://dx.doi.org/10.1097/MD.0000000000005634>

population because they commonly have vague statements of symptoms due to declined cognition, altered consciousness, or atypical symptoms and signs.<sup>[10–12]</sup>

Systemic inflammatory response syndrome (SIRS) is closely related to sepsis, and the criteria of SIRS to define sepsis were proposed by the consensus conference of the American College of Chest Physicians in 1992.<sup>[13]</sup> After Rangel-Frausto discussed about progression of SIRS, sepsis, severe sepsis, and septic shock,<sup>[14]</sup> there were many studies worked on the predictive value of SIRS to severe sepsis and found that SIRS had less predictive value for severe sepsis or septic shock.<sup>[15,16]</sup> However, SIRS was regarded as an adequate predictor for bacteremia in some studies,<sup>[17,18]</sup> and we found there was no study focused on performance of SIRS in elderly patients with bacteremia in EDs. Due to the great challenge of early diagnosing bacteremia of elderly patients in EDs, we aimed to evaluate the components of SIRS and their performance in predicting bacteremia among elderly patients in EDs.

## 2. Methods

### 2.1. Patients and setting

We collected data of patients admitted to the ED of Chang Gung Memorial Hospital in Linkou, a tertiary academic medical center in Northern Taiwan serving approximately 180,000 patients in ED annually. We reviewed electronic medical charts and constructed a retrospective cohort study from 2010 to 2012. Two-step inclusion algorithm was utilized in this study: all adult patients (older than 18 years) with international classification of disease, 9th revision, clinical modification (ICD-9-CM) diagnosis codes of infectious diseases (appendix 1); patients with clinically suspected bacteremia as indicated by 2 sets of blood cultures ordered on physician's discretion within 4 hours after admitting to ED. Patients who had cardiac arrest before ED visit and visited ED owing to traumatic injury were excluded from this study. Only the first ED visit of each patient during the study period was included in the final analysis. The institutional review board of the Chang Gung Memorial Hospital approved the study and waived requirement for informed consent.

### 2.2. Measurements

The vital signs and Glasgow Coma Scale with verbal response at the triage, basic demographic data, comorbidities, sites of infection, laboratory, and microbiological results and the final discharge status were retrieved via the electronic medical records (EMRs) for all patients. All variables were defined before data collected and recorded in a standardized format during information collection. Structured Query Language was utilized by trained research coordinators with predefined data collection forms to retrieve EMRs, and EMRs were stored in Microsoft Access (Microsoft, Redmond, WA) for subsequent chart review and data management. The data abstractors were blinded to the study objectives and hypothesis. Different program codes were used to double-check the results of the EMRs. Charlson Comorbidity Index (CCI) was obtained from ICD-9-CM diagnosis codes the patients ever had in the EMRs. The SIRS criteria were defined as more than one of the below parameters met: body temperature more than 38 or less than 36°C; heart rate more than 90 bpm; tachypnea with respiratory rate more than 20 bpm; and white blood cell count greater than 12,000/mm<sup>3</sup> or below 4000/mm<sup>3</sup> or band form greater than 10% as established

by the American College of Chest Physicians/Society of Critical Care Medicine Consensus Conference in 1992. Presumed sites of infection were identified as ED diagnoses and categorized into respiratory, genitourinary, soft tissue, intra-abdominal, others (such as meningitis and osteomyelitis), and unknown origin.

### 2.3. Criteria for bacteremia

Bacteremia was defined as both 2 sets of blood culture grew the same microorganism or 1 set of blood culture had bacteria except possible contaminated resource, that is, *coagulase-negative Staphylococci*, *Corynebacterium species*, *Propionibacterium species*, *Bacillus species*, *Aerococcus species*, and *Micrococcus species*. Blood cultures were verified from the microbiology laboratory database, and results were confirmed by the microbiology laboratory.

### 2.4. Mortality

The mortality record was retrieved from the EMRs and classified into 3 groups; within 24 hours, 72 hours, and 28 days after admitting to ED. Patients discharged critically were categorized in the mortality group.

### 2.5. Statistical analysis

Statistical analysis was performed with R software version 3.1.0 (R Foundation for Statistical Computing, Vienna, Austria) and STATA 13.0 (StataCorp, College Station, TX). Descriptive analysis was used to summarize the demographics and characteristics of our patients with 3 age groups as young (18–64 years), young-old (65–74 years), and old (75 years and over). Categorical variables were reported as number and percentages. Continuous variables were reported as mean and standard deviation. Continuous variables of clinical data were converted into categorical variables by cutoff points, which referred to clinical practice, protocols in other studies, or associated laboratory references. The categorical variables were examined by chi-square test or Fisher exact test when appropriate. A linear association between the row categorical variable and the column categorical variable were examined by Mantel–Haenszel chi-square test. An Allen-Cady backward stepwise multivariable logistic regression was used to adjust potential confounders between bacteremia and components of SIRS criteria, for example, comorbidities using CCI, DM, and history of malignancy, sites of infection, and verbal response at the triage. Interaction between SIRS score and age groups was examined by multivariable logistic regression. We also performed another Allen-Cady backward stepwise multivariable logistic regression to analyze the risk factors between 28-day mortality and bacteremia, components of SIRS criteria, age categories, comorbidities, sites of infection, and verbal response at the triage.

## 3. Results

From 2010 to 2012, 130,869 patients visited our ED with infection. Among them, 110,378 patients were excluded due to either younger than 18 years old, visiting ED owing to traumatic injury, out-of-hospital cardiac arrest, or not drawing blood cultures within 4 hours after admitting to ED. After further excluding 299 patients with incomplete data or uncertain discharge time (1.5%), 20,192 patients were included in our final analysis (Fig. 1).

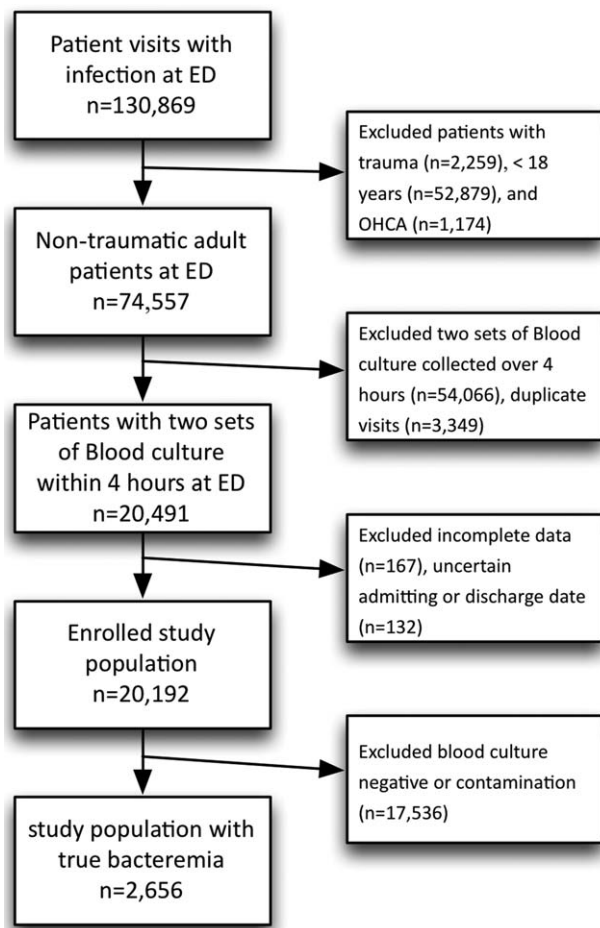


Figure 1. Flowcharts of enrollment of study population.

### 3.1. Patient characteristics

In 20,192 enrolled patients, 10,954 were male (54.3%), and the mean age was  $62 \pm 18.6$  (standard deviation) years (Table 1). Of all patients, 10,330 (51.2%) were younger than 65 years, 3561 (17.6%) between 65 and 74 years and 6301 (31.2%) older than 75 years. No gender difference was found in all 3 age groups. Highest CCI was observed in the young-old group (young: 1.2, young-old: 1.7, and old: 1.4;  $P < 0.0001$ ). The young-old group also had highest proportion of diabetes (47.43%,  $P < 0.0001$ ) and malignancy (29.43%,  $P < 0.0001$ ). The trend of impaired consciousness with manifestation of declined verbal response at the triage was significant. In the old group, there was almost 1/3 patients could not converse normally or were not verbally oriented (young: 8.65%, young-old: 19.77%, and old: 35.90%;  $P$  for trend  $< 0.0001$ ). The most common site of infection overall was respiratory tract infection (44%), and it was found in more than half of the old group (55.5%,  $P < 0.0001$ ). Genitourinary system was the second most common site of infection (21%), and there was a trend toward more prevalence among the older patient groups ( $P = 0.02$ ).

### 3.2. Bacteremia

In 20,192 enrolled patients, bacteremia was confirmed by the microbiology laboratory in 2656 patients (13.15%). The percentage of bacteremia in the young group was 12.11%

( $N = 1251$ ), and patients in young-old and old groups had higher percentage of bacteremia (15.84%,  $N = 564$  and 13.35%,  $N = 841$ , respectively,  $P < 0.0001$ , Table 2). Gram-negative bacteremia accounted for the largest proportion of bacteremia (65.4%, Table 2).

### 3.3. SIRS criteria

There were nearly 2/3 of all enrolled patients with clinically suspected sepsis met the SIRS criteria ( $N = 14,054$ , 69.6%). The elderly patients were less likely to have abnormal body temperature, tachycardia, or abnormal white blood cell count but more likely to have tachypnea (all  $P$  for trend  $< 0.0001$ , Table 1). Among patients with confirmed bacteremia, the elderly patients tended to be less likely to present with tachycardia but more like to present with tachypnea (young: 28.8%, young-old: 36.5%, and old: 49.7%;  $P < 0.0001$ , Table 2).

Table 3 illustrated the performance of SIRS score to predict bacteremia among patients with suspected sepsis in different age groups. Overall, SIRS was marginally more likely to predict bacteremia among the elderly patients, compared to young patients (adjusted area under the curve: 0.63 vs 0.60, adjusted for site of infection and comorbidities). SIRS performed better among the elderly patients (young: adjusted odds ratio [aOR] 2.06, young-old: aOR 2.40, and old: aOR 2.66). Abnormal body temperature at the triage was most predictive of bacteremia, especially in the young-old group (aOR: 2.22, 95% confidence interval [CI]: 1.85–2.67, all  $P < 0.0001$ , adjusting for CCI, comorbidities, site of infection, and verbal response, same adjustment for aOR below). Hyperthermia ( $> 38^\circ\text{C}$ ) indicated the highest risk for bacteremia in the old group (aOR: 2.27, 95% CI: 1.95–2.63, all  $P < 0.0001$ , interaction  $P = 0.003$ ). On the contrary, hypothermia ( $< 36^\circ\text{C}$ ) was associated negative blood culture results among the old patient groups (old group aOR: 0.68, 95% CI: 0.51–0.91,  $P = 0.01$ ). Tachycardia and abnormal white blood cell count were both risk factors for bacteremia for the elderly patients but not as significant as abnormal body temperature (all  $P < 0.0001$ ), and both were more likely to be found in the young-old group than in the old group. Lastly, tachypnea was least predictive of bacteremia among the elderly patients (all  $P > 0.2$ , Table 3).

### 3.4. Mortality

The mortality rate of all enrolled patients within 24 hours after admission to our ED was 1.9%, and the mortality rate was higher among the elderly patients (young: 1.3%, young-old: 2.4%, and old: 2.5%;  $P$  for trend  $< 0.0001$ , Table 1). The same trends were also observed in mortality within 72 hours ( $P$  for trend = 0.04), and within 28 days ( $P$  for trend  $< 0.0001$ , Table 1). Table 2 showed the mortality rates of patients with confirmed bacteremia. Similarly, the elderly groups had higher mortality within 24 hours, 72 hours, and 28 days (all  $P$  for trend  $< 0.0001$ ). Furthermore, in the final multivariable logistic regression model, we found that the 28-day mortality was positively associated with bacteremia, age, CCI, malignancy, and respiratory and unknown site of infection, and negatively associated with genitourinary site of infection, and verbal response and body temperature at the triage (all  $P < 0.001$ , Table 4).

## 4. Discussion

Due to the rapid growing of elderly population (aged over 65 years), we encounter increasing proportion of elderly patient

**Table 1****Basic characteristics of study population stratified by age groups.**

	Total		Young		Young-old		Old	
	N = 20,192		<65 y (18–64) (N = 10,330)		65–74 y (N = 3561)		≥75 y (N = 6301)	
	Number (mean)	% (SD)	Number (mean)	% (SD)	Number (mean)	% (SD)	Number (mean)	% (SD)
Age in years	62.0	18.6	46.9	12.4	69.8	2.9	82.4	5.3
Male	10,954	54.3	5548	53.7	1945	54.6	3461	54.9
Comorbidity								
CCI	1.4	1.8	1.2	1.8	1.7	1.9	1.4	1.6
Diabetes	7409	36.69	3066	29.68	1689	47.43	2654	42.12
Malignancy	4870	24.12	2457	23.79	1048	29.43	1365	21.66
Renal disease	3563	17.65	1376	13.32	790	22.18	1397	22.17
Liver disease	2706	13.40	1685	16.31	472	13.25	549	8.71
Signs of SIRS								
Body temperature								
>38°C*	7355	36.4	4129	40.0	1258	35.3	1968	31.2
36–38°C	11,349	56.2	5579	54.0	2029	57.0	3741	59.4
<36°C	1488	7.4	622	6.0	274	7.7	592	9.4
HR > 90/min*	15,041	74.5	8341	80.8	2471	69.4	4229	67.1
RR > 20/min*	6558	32.5	2283	22.1	1270	35.7	3005	47.7
WBC								
>12,000/μL*	8812	43.6	4408	42.7	1598	44.9	2806	44.5
4000–12,000/μL	9900	49.0	5006	48.5	1672	47.0	3222	51.1
<4000/μL	1480	7.3	916	8.9	291	8.2	273	4.3
Band >10%	1223	6.1	633	6.1	251	7.1	339	5.4
SIRS criteria	14,054	69.6	7273.0	70.4	2414.0	67.8	4367.0	69.3
Conscious level at triage								
Verbal ≤4*	3860	19.1	894	8.7	704	19.8	2262	35.9
Specific sites of infection								
Respiratory system*	8876	44.0	3823	37.0	1557	43.7	3496	55.5
genitourinary system†	4302	21.3	2158	20.9	721	20.3	1423	22.6
Skin and soft tissue infection	2101	10.4	1291	12.5	378	10.6	432	6.9
Intra-abdominal	1269	6.3	724	7.0	261	7.3	284	4.5
24-h mortality*	374	1.9	134	1.3	84	2.4	156	2.5
72-h mortality*	603	3.0	212	2.1	128	3.6	263	4.2
28-day mortality*	1649	8.2	577	5.6	337	9.5	735	11.7

CCI = Charlson Comorbidity Index, HR = heart rate, RR = respiratory rate, SD = standard deviation, SIRS = systemic inflammatory response syndrome, WBC = white blood cell count.

\* P value for trend &lt;0.0001.

† P value for trend &lt;0.05.

**Table 2****SIRS of patients with bacteremia stratified by age groups.**

	Total		Young		Young-old		Old	
	(N = 2656)		<65 y (18–64) (N = 1251)		65–74 y (N = 564)		≥75 y (N = 841)	
	Number	%	Number	%	Number	%	Number	%
Pathogen								
Gram positive	813	30.6	384	30.7	161	28.5	268	31.9
Mixed (positive and negative)	105	4.0	47	3.8	15	2.7	43	5.1
Gram negative	1738	65.4	820	65.5	388	68.8	530	63.0
SIRS finding								
Abnormal temperature	1557	58.6	748	59.8	336	59.6	473	56.2
Tachycardia*	2163	81.4	1082	86.5	442	78.4	639	76.0
Tachypnea	984	37.0	360	28.8	206	36.5	418	49.7
Abnormal WBC level	1568	59.0	724	57.9	353	62.6	491	58.4
Specific sites of infection								
Respiratory system*	848	29.3	358	28.6	165	29.3	325	38.6
Genitourinary system*	842	29.1	361	28.9	173	30.7	308	36.6
Skin and soft tissue infection†	180	6.2	107	8.6	32	5.7	41	4.9
Intra-abdominal	216	7.5	126	10.1	47	8.3	43	5.1
Other†	56	1.9	36	2.9	11	2	9	1.1
Unknown‡	748	25.9	363	29	182	32	203	2.4
Conscious at triage								
Verbal ≤4 (not clear)*	618	3.1	146	11.7	135	23.9	337	40.1
24-h mortality*	120	4.5	53	4.2	28	5.0	39	4.6
72-h mortality*	183	6.9	81	6.5	38	6.7	64	7.6
28-day mortality*	370	13.9	155	12.4	83	14.7	132	15.7

Other including nervous and muscle skeleton systems. SIRS = systemic inflammatory response syndrome, WBC = white blood cell count.

\* P value for trend &lt;0.0001.

† P value for trend &lt;0.001.

‡ P value for trend &lt;0.05.



**Table 3**  
The performance of SIRS score to predict bacteremia among patient with suspected sepsis in different age groups.

	Total		Young		Young-old		Old	
	Adjusted odds ratio (95% CI)	P	Age (<65y)		Age (65–74y)		Age (≥75y)	
			Adjusted odds ratio (95% CI)	P	Adjusted odds ratio (95% CI)	P	Adjusted odds ratio (95% CI)	P
Abnormal temperature	1.99 (1.84, 2.17)	<0.0001	1.89 (1.67, 2.13)	<0.0001	2.22 (1.85, 2.67)	<0.0001	2.08 (1.79, 2.41)	<0.0001
Hyperthermia (>38 °C)	2.01 (1.84, 2.18)	<0.0001	1.81 (1.60, 2.05)	<0.0001	2.19 (1.81, 2.65)	<0.0001	2.27 (1.95, 2.63)	<0.0001
Hypothermia (<36 °C)	0.77 (0.65, 0.92)	<0.0001	0.86 (0.66, 1.12)	0.28	0.70 (0.47, 1.03)	0.07	0.68 (0.51, 0.91)	0.01
Tachycardia	1.59 (1.43, 1.76)	<0.0001	1.61 (1.35, 1.90)	<0.0001	1.73 (1.40, 2.14)	<0.0001	1.65 (1.39, 1.95)	<0.0001
Tachypnea	1.26 (1.16, 1.38)	<0.0001	1.50 (1.32, 1.72)	<0.0001	1.05 (0.87, 1.26)	0.64	1.10 (0.95, 1.27)	0.21
Abnormal WBC level	1.46 (1.34, 1.58)	<0.0001	1.34 (1.19, 1.51)	<0.0001	1.59 (1.32, 1.91)	<0.0001	1.56 (1.34, 1.80)	<0.0001
SIRS criteria	2.27 (2.04, 2.52)	<0.0001	2.06 (1.76, 2.41)	<0.0001	2.40 (1.90, 3.03)	<0.0001	2.66 (2.19, 3.23)	<0.0001
SIRS score	1.50 (1.43, 1.56)	<0.0001	1.46 (1.37, 1.56)	<0.0001	1.55 (1.41, 1.70)	<0.0001	1.52 (1.42, 1.64)	<0.0001

SIRS = systemic inflammatory response syndrome, WBC = white blood cell count.

in ED.<sup>[19]</sup> SIRS, a combination of physiological responses to a nonspecific insult of either infectious or noninfectious, had been thought to be predictive of severity of infection such as bacteremia.<sup>[7,20]</sup> In this retrospective cohort study, we illustrated the capacity of SIRS criteria to predict bacteremia in the elderly patients in ED. We found the elderly patients with suspected sepsis had less abnormal body temperature, tachycardia or abnormal white blood cell count but more tachypnea than the young patients. Furthermore, the SIRS criteria were more likely to predict bacteremia among the elderly patients. Lastly, after adjusting for potential confounders, hyperthermia was more predictive of laboratory-confirmed bacteremia among the elderly patients than the young group. Surprisingly, tachypnea was found unlikely to be predictive of bacteremia among the elderly patients.

Abnormal vital signs are commonly used to predict the severity of infection.<sup>[21]</sup> The relationship between fever and bacteremia has been examined in some studies, and some indicated that fever had no predictive value for bacteremia in adults, especially for catheter-related bacteremia.<sup>[22–24]</sup> In our study, we observed that the elderly patients with suspected bacteremia were less likely to present with fever. This phenomenon could be explained by the blunted response to endogenous pyrogens with aging or the lower baseline body temperature of the elder population.<sup>[25,26]</sup> It could also be possible that clinician would be more cautious to survey the possibility of bacteremia among the elderly in our ED.

**Table 4**  
Multivariable logistic regression evaluating the association between 28-day mortality and risk factors.

	Adjusted odds ratio (95% CI)	P
Bacteremia	2.36 (2.06, 2.71)	<0.0001
Young-old age*	1.35 (1.16, 1.56)	<0.0001
Old age*	1.60 (1.41, 1.82)	<0.0001
Comorbidity		
CCI	1.14 (1.11, 1.17)	<0.0001
Malignancy	2.74 (2.39, 3.13)	<0.0001
Site of infection		
Respiratory system	3.19 (2.68, 3.80)	<0.0001
Genitourinary system	0.57 (0.47, 0.69)	<0.0001
Unknown	1.60 (1.31, 1.96)	<0.0001
Verbal ≤4 (not clear)	0.74 (0.71, 0.76)	<0.0001
Abnormal temperature	0.75 (0.67, 0.84)	<0.0001

CI = confidence interval, CCI = Charlson Comorbidity Index.

\*Reference group: young age group.

Furthermore, bacteremia was more likely to be associated with fever among the elderly than the young patients in our study, which was also seen in Tomohiro study.<sup>[24]</sup>

Tachycardia is one of the physiological effects of endogenous mediators induced by inflammation and has been found as an independent factor of mortality for elderly patients with infection.<sup>[27]</sup> It is also associated with bacteremia for all patients independent of their age.<sup>[28,29]</sup> In our study, tachycardia was less likely to be observed in elderly patients, but more indicative for bacteremia than the young group. As Green et al<sup>[30]</sup> observed decreased likelihood of tachycardia in octogenarians with bacteremia, the old group with tachycardia in our study also had less risk of bacteremia than the young-old group (old group aOR: 1.65, 95% CI: 1.39–1.95,  $P < 0.0001$ ). This phenomenon could be explained by multiple factors associated with heart rates among the elderly patients, including declining intrinsic heart rate, changes in response to adrenergic mediated stress, or medication for chronic disease.<sup>[31]</sup>

In our study, the elderly patients with suspected bacteremia tended to present with tachypnea and had higher probability to suffer from respiratory tract infection. However, tachypnea was not a significant predictor for bacteremia in the elderly patients after adjustment for comorbidities, sites of infection, and verbal response in our study. The medical comorbidities could potential influence the baseline respiratory rate, and we observed elderly patients did have higher CCI.<sup>[32]</sup> Although tachypnea had been thought one of the host responses to severe infection,<sup>[27,33]</sup> it was not a significant predictor of mortality.<sup>[30]</sup> Further studies to clarify for this phenomenon is merited.

The only criterion of SIRS requiring laboratory confirmation is white blood cell count or bandemia. In the present study, we did not find the phenomenon of blunt leukocytosis in elderly patients with suspected bacteremia as Lai et al<sup>[34]</sup> on 2011, and abnormal white blood count and bandemia in the elderly patients is a weak predictor to bacteremia in our study (young-old group aOR: 1.59, 95% CI: 1.32–1.91; old group aOR: 1.56, 95% CI: 1.34–1.80,  $P < 0.0001$  and  $P < 0.0001$ , compared to the young group). Furthermore, we found that leukocytosis was more important among the young-old patients, of whom more diabetes, malignancy and other comorbidities were found. Complicated interaction between aging and these comorbidities might be the reason of this phenomenon and needs further studies to disentangle.

Altered mental status could serve as an indicator of mortality for elderly patients with bacteremia.<sup>[35–38]</sup> In our study population, we observed patients with bacteremia also had the trend of declined verbal response with aging. Progressive

degeneration or previous neurovascular event could make the elderly have trouble in communication and verbal response, which might be worsened by bacteremia. This condition will make a dilemma about early diagnosis and treatment for the elderly patients with bacteremia.

As illustrated, we observed higher probability of bacteremia in elderly patients. Respiratory tract infection was the most common suspected source for bacteremia, especially in the elderly patients. We found both respiratory tract and urogenital system infection were common sources of bacteremia in the elderly patients. It may be related to institution resident or indwelling urinary catheters usually seen in the elderly patients and increases the risk of catheter-associated infection, but we did not verify that from EMRs in this study. Other possible hypotheses include lower sensitivity of the immune system, changes in host defense mechanism and increased incidences of underlying illness, which might explain the lower resistance to infection among the elderly patients.<sup>[39]</sup>

This study showed the trend of increasing mortality with age among patients with suspected sepsis and laboratory-confirmed bacteremia. The elderly had higher mortality rate compared to the younger patients in 24 hours, 72 hours, and 28 days after admitting to ED significantly. Some unique aspects of infections in the elderly, such as reduced physiologic reserve capacity of aging, may contribute to higher morbidity and mortality in this population.<sup>[40]</sup> Hence, early diagnosis of bacteremia for the front-line emergency physicians in order to start adequate management for the elderly patients with sepsis to improve outcome is mandatory.

## 5. Limitation

There were some limitations in our study. First, due to all the data were retrieved via the EMRs, there was incomplete information regarding patient sources and the prevalence of indwelling urinary catheter. Second, respiratory rate was counted by triage nurses visually and was not highly reliable, which could potentially contribute to its poor performance to predict bacteremia. Third, we may underestimate the prevalence of fever at the triage because patients may have antipyretic before visiting ED, which could also influence the performance of hyperthermia to predict bacteremia. Fourth, although we have attempted to adjust the potential confounders such as comorbidities, we caution the reader to generalize our results before comparing their own patient population. Lastly, although we included patients with infectious diseases and clinically suspected bacteremia as indicated by 2 sets of blood cultures ordered on physician's discretion and excluded patients who had cardiac arrest before ED visit and visited ED owing to traumatic injury, it is still possible that bacteremia is a secondary effect that associated with diseases and disorders accompanied with SIRS other than infections.

## 6. Conclusion

In conclusion, the elderly patients usually present vague symptoms and signs of sepsis. SIRS is slightly more accurate to predict bacteremia for the elderly patients with suspected sepsis in ED. If the elderly patients present with fever or tachycardia they have higher possibility to have bacteremia.

## Acknowledgment

The authors thank Mr Bin-Zhe Hong for the assistance of statistics.

## References

- Gaieski DF, Mikkelsen ME, Band RA, et al. Impact of time to antibiotics on survival in patients with severe sepsis or septic shock in whom early goal-directed therapy was initiated in the emergency department. *Crit Care Med* 2010;38:1045–53.
- Morrison J, Zweitzig D, Riccardello N, et al. Retrospective analysis of clinical data associated with patients enrolled in a molecular diagnostic feasibility study highlights the potential utility for rapid detection of bloodstream infection. *Am J Emerg Med* 2014;32:511–6.
- Hoenigl M, Raggam RB, Wagner J, et al. Diagnostic accuracy of soluble urokinase plasminogen activator receptor (suPAR) for prediction of bacteremia in patients with systemic inflammatory response syndrome. *Clin Biochem* 2013;46:225–9.
- Bell K, Wattie M, Byth K, et al. Procalcitonin: a marker of bacteraemia in SIRS. *Anaesth Intensive Care* 2003;31:629–39.
- Lin KJ, Lin J, Hanasawa K, et al. Interleukin-8 as a predictor of the severity of bacteremia and infectious disease. *Shock* 2000;14:95–100.
- Falguera M, Trujillano J, Caro S, et al. A prediction rule for estimating the risk of bacteremia in patients with community-acquired pneumonia. *Clin Infect Dis* 2009;49:409–16.
- Wildi K, Tschudin-Sutter S, Dell-Kuster S, et al. Factors associated with positive blood cultures in outpatients with suspected bacteremia. *Eur J Clin Microbiol Infect Dis* 2011;30:1615–9.
- Marti L, Cervera C, Filella X, et al. Cytokine-release patterns in elderly patients with systemic inflammatory response syndrome. *Gerontology* 2007;53:239–44.
- Lai CC, Chen SY, Wang CY, et al. Diagnostic value of procalcitonin for bacterial infection in elderly patients in the emergency department. *J Am Geriatr Soc* 2010;58:518–22.
- Wester AL, Dunlop O, Melby KK, et al. Age-related differences in symptoms, diagnosis and prognosis of bacteremia. *BMC Infect Dis* 2013;13:346.
- Fontanarosa PB, Kaeberlein FJ, Gerson LW, et al. Difficulty in predicting bacteremia in elderly emergency patients. *Ann Emerg Med* 1992;21:842–8.
- Girard TD, Opal SM, Ely EW. Insights into severe sepsis in older patients: from epidemiology to evidence-based management. *Clin Infect Dis* 2005;40:719–27.
- Bone RC BR, Cerra FB, Dellinger RP, et al. Definitions for sepsis and organ failure and guidelines for the use of innovative therapies in sepsis. The ACCP/SCCM Consensus Conference Committee. American College of Chest Physicians/Society of Critical Care Medicine. *Chest* 1992;101:1644–55.
- Rangel-Frausto MS, Pittet D, Costigan M, et al. The natural history of the systemic inflammatory response syndrome (SIRS). A prospective study. *JAMA* 1995;273:117–23.
- Gille-Johnson P, Hansson KE, Gardlund B. Severe sepsis and systemic inflammatory response syndrome in emergency department patients with suspected severe infection. *Scand J Infect Dis* 2013;45:186–93.
- Bossink AW, Groeneveld AB, Koffeman GI, et al. Prediction of shock in febrile medical patients with a clinical infection. *Crit Care Med* 2001;29:25–31.
- Leth RA, Forman BE, Kristensen B. Predicting bloodstream infection via systemic inflammatory response syndrome or biochemistry. *J Emerg Med* 2013;44:550–7.
- Jones GR, Lowes JA. The systemic inflammatory response syndrome as a predictor of bacteraemia and outcome from sepsis. *Q J Med* 1996;89:515–22.
- George G, Jell C, Todd BS. Effect of population ageing on emergency department speed and efficiency: a historical perspective from a district general hospital in the UK. *Emerg Med J* 2006;23:379–83.
- Baitello AL, Colleoni Neto R, Herani Filho B, et al. Bacteremia—prevalence and associated factors in patients with acute calculous cholecystitis. *Rev Assoc Med Bras* 2004;50:373–9.
- Nolt BR, Gonzales R, Maselli J, et al. Vital-sign abnormalities as predictors of pneumonia in adults with acute cough illness. *Am J Emerg Med* 2007;25:631–6.
- Al-Solaiman Y, Estrada E, Allon M. The spectrum of infections in catheter-dependent hemodialysis patients. *Clin J Am Soc Nephrol* 2011;6:2247–52.
- Coburn B, Morris AM, Tomlinson G, et al. Does this adult patient with suspected bacteremia require blood cultures? *JAMA* 2012;308:502–11.
- Taniguchi T, Tsuha S, Takayama Y, et al. Shaking chills and high body temperature predict bacteremia especially among elderly patients. *Springerplus* 2013;2:624.

- [25] Castle SC, Norman DC, Yeh M, et al. Fever response in elderly nursing home residents: are the older truly colder? *J Am Geriatr Soc* 1991; 39:853–7.
- [26] Gomolin IH, Aung MM, Wolf-Klein G, et al. Older is colder: temperature range and variation in older people. *J Am Geriatr Soc* 2005;53:2170–2.
- [27] Caterino JM, Kulchycki LK, Fischer CM, et al. Risk factors for death in elderly emergency department patients with suspected infection. *J Am Geriatr Soc* 2009;57:1184–90.
- [28] Lee CC, Chen SY, Chang IJ, et al. Comparison of clinical manifestations and outcome of community-acquired bloodstream infections among the oldest old, elderly, and adult patients. *Medicine* 2007;86:138–44.
- [29] Phua J, Ngerng W, See K, et al. Characteristics and outcomes of culture-negative versus culture-positive severe sepsis. *Crit Care* 2013;17:R202.
- [30] Green JE, Ariathianto Y, Wong SM, et al. Clinical and inflammatory response to bloodstream infections in octogenarians. *BMC Geriatr* 2014;14:55.
- [31] Christou DD, Seals DR. Decreased maximal heart rate with aging is related to reduced {beta}-adrenergic responsiveness but is largely explained by a reduction in intrinsic heart rate. *J Appl Physiol* 1985;2008;105:24–9.
- [32] Charlson ME, Pompei P, Ales KL, et al. A new method of classifying prognostic comorbidity in longitudinal studies: development and validation. *J Chronic Dis* 1987;40:373–83.
- [33] Cardoso T, Teixeira-Pinto A, Rodrigues PP, et al. Predisposition, insult/infection, response and organ dysfunction (PIRO): a pilot clinical staging system for hospital mortality in patients with infection. *PLoS One* 2013;8:e70806.
- [34] Lai WA, Chen SF, Tsai NW, et al. Clinical characteristics and prognosis of acute bacterial meningitis in elderly patients over 65: a hospital-based study. *BMC Geriatr* 2011;11:91.
- [35] Deulofeu F, Cervelló B, Capell S, et al. Predictors of mortality in patients with bacteremia: the importance of functional status. *J Am Geriatr Soc* 1998;46:14–8.
- [36] Rebelo M, Pereira B, Lima J, et al. Predictors of in-hospital mortality in elderly patients with bacteraemia admitted to an Internal Medicine ward. *Int Arch Med* 2011;4:33.
- [37] Calle A, Márquez MA, Arellano M, et al. Geriatric assessment and prognostic factors of mortality in very elderly patients with community-acquired pneumonia. *Arch Bronconeumol* 2014;50:429–34.
- [38] Ruiz LA, Zalacain R, Capelastegui A, et al. Bacteremic pneumococcal pneumonia in elderly and very elderly patients: host- and pathogen-related factors, process of care, and outcome. *J Gerontol A Biol Sci Med Sci* 2014;69:1018–24.
- [39] Nasa P, Juneja D, Singh O. Severe sepsis and septic shock in the elderly: an overview. *World J Crit Care Med* 2012;1:23–30.
- [40] Yoshikawa TT. Epidemiology and unique aspects of aging and infectious diseases. *Clin Infect Dis* 2000;30:931–3.