

Quantification of Lung PET Images: Challenges and Opportunities

Delphine L. Chen¹, Joseph Cheriyan^{2,3}, Edwin R. Chilvers², Gourab Choudhury⁴, Christopher Coello⁵, Martin Connell⁴, Marie Fisk², Ashley M. Groves⁶, Roger N. Gunn^{5,7}, Beverley F. Holman⁶, Brian F. Hutton⁶, Sarah Lee⁸, William MacNee⁴, Divya Mohan⁹, David Parr¹⁰, Deepak Subramanian¹¹, Ruth Tal-Singer⁹, Kris Thielemans⁶, Edwin J. R. van Beek⁴, Laurence Vass², Jeremy W. Wellen¹², Ian Wilkinson^{2,3}, and Frederick J. Wilson¹³

¹Mallinckrodt Institute of Radiology, Washington University School of Medicine, St. Louis, Missouri; ²Department of Medicine, University of Cambridge, Cambridge, United Kingdom; ³Cambridge University Hospitals NHS Foundation Trust, Cambridge, United Kingdom; ⁴Queen's Medical Research Institute, University of Edinburgh, Edinburgh, United Kingdom; ⁵Imanova Ltd., London, United Kingdom; ⁶Institute of Nuclear Medicine, University College London, London, United Kingdom; ⁷Department of Medicine, Imperial College London, London, United Kingdom; ⁸Medical Image Analysis Consultant, London, United Kingdom; ⁹Clinical Discovery, Respiratory Therapy Area Unit, GlaxoSmithKline R&D, King of Prussia, Pennsylvania; ¹⁰University Hospitals Coventry and Warwickshire, Coventry, United Kingdom; ¹¹Derby Teaching Hospitals NHS Foundation Trust, Derby, United Kingdom; ¹²Worldwide Research and Development, Pfizer, Inc., Cambridge, Massachusetts; and ¹³Experimental Medicine Imaging, GlaxoSmithKline, Stevenage, United Kingdom

Learning Objectives: On successful completion of this activity, participants should be able to (1) describe the methods that have been used to quantify ¹⁸F-FDG uptake in the lungs using dynamic PET; (2) discuss the interpretation of the outcomes from these methods; and (3) provide suggested considerations on quantification of ¹⁸F-FDG uptake in the lungs for future studies.

Financial Disclosure: Dr. Cheriyan's salary is funded in part by GlaxoSmithKline for clinical research. Dr. Lee is a consultant to GlaxoSmithKline. Drs. Mohan and Tal-Singer and Mr. Wilson are employees and shareholders of GlaxoSmithKline. Mr. Wilson was previously a consultant to ECNP R&S, GlaxoSmithKline, IPPEC, King's College London, Lundbeck A/S, Mentis Cura Ehf, and Pfizer, Inc., and has received travel expenses as a guest speaker from Orion Pharma Ltd. Dr. Wellen is an employee and shareholder of Pfizer. Dr. Gunn is a consultant for Abbvie, Biogen, GlaxoSmithKline, UCB, Roche, and Genentech, S.A. Drs. Groves, Holman, Thielemans, and Hutton have research grants from GlaxoSmithKline and receive funding from the National Institute for Health Research University College London Hospitals Biomedical Research Centre. Dr. Chen receives funding from the National Institutes of Health (R01 HL121218). Drs. Cheriyan and Wilkinson receive funding from the National Institute of Health Research (NIHR) Cambridge Comprehensive Biomedical Research Centre. Dr. Gunn is an employee of Imanova and Imperial College London. Dr. Coello is an employee of Imanova. The authors of this article have indicated no other relevant relationships that could be perceived as a real or apparent conflict of interest.

CME Credit: SNMMI is accredited by the Accreditation Council for Continuing Medical Education (ACCME) to sponsor continuing education for physicians. SNMMI designates each *JNM* continuing education article for a maximum of 2.0 AMA PRA Category 1 Credits. Physicians should claim only credit commensurate with the extent of their participation in the activity. For CE credit, SAM, and other credit types, participants can access this activity through the SNMMI website (<http://www.snmmilearningcenter.org>) through February 2020.

Millions of people are affected by respiratory diseases, leading to a significant health burden globally. Because of the current insufficient knowledge of the underlying mechanisms that lead to the development and progression of respiratory diseases, treatment options remain limited. To overcome this limitation and understand the associated molecular changes, noninvasive imaging techniques such as PET and SPECT have been explored for biomarker development, with ¹⁸F-FDG PET imaging being the most studied. The quantification of pulmonary molecular imaging data remains challenging because of variations in tissue, air, blood, and water fractions within the lungs. The proportions of these components further differ depending on the lung disease. Therefore, different quantification approaches have been proposed to address these variabilities. However, no standardized approach has been developed to date. This article reviews the data evaluating ¹⁸F-FDG PET quantification approaches in lung diseases, focusing on methods to account for variations in lung components and the interpretation of

the derived parameters. The diseases reviewed include acute respiratory distress syndrome, chronic obstructive pulmonary disease, and interstitial lung diseases such as idiopathic pulmonary fibrosis. Based on review of prior literature, ongoing research, and discussions among the authors, suggested considerations are presented to assist with the interpretation of the derived parameters from these approaches and the design of future studies.

Key Words: pulmonary; lung inflammation; molecular imaging; positron emission tomography

J Nucl Med 2017; 58:201–207

DOI: 10.2967/jnumed.116.184796

Respiratory diseases are a significant global health burden that affect millions of people (1,2). However, treatment options remain limited because pathogenic mechanisms remain poorly understood. The clinical manifestations and severity of lung diseases vary significantly, and the number of clinical biomarkers available to identify aggressive disease phenotypes with accelerated progression is limited. Furthermore, 50% of drugs fail in phase III trials because of lack of demonstrable efficacy, and respiratory drugs are often the costliest to develop (1,3,4). These facts

Received Dec. 1, 2016; revision accepted Jan. 10, 2017.

For correspondence or reprints contact: Delphine L. Chen, Washington University School of Medicine, Campus Box 8225, 510 S. Kingshighway Blvd., St. Louis, MO 63110.

E-mail: chend@wustl.edu

Published online Jan. 12, 2017.

COPYRIGHT © 2017 by the Society of Nuclear Medicine and Molecular Imaging.

highlight the need for quantitative biomarkers to select appropriate therapeutic targets and assess the efficacy of novel respiratory therapies.

The U.S. Food and Drug Administration defines a biomarker as “a defined characteristic that is measured as an indicator of normal biologic processes, pathogenic processes, or responses to an exposure or intervention, including therapeutic interventions” (5). Traditional clinical measures, such as global lung function, reflect disease severity rather than disease activity. Because inflammation is commonly associated with respiratory diseases, robust molecular biomarkers of pulmonary inflammation might be applied in multiple ways to aid the development of effective therapies, including in early-phase clinical pharmacodynamic studies of antiinflammatory therapies, as a complement to structural imaging and functional spirometry measures in phenotyping patients who may benefit from more intensive therapy or earlier lung transplantation, and as a tool to improve our understanding of the pathogenic mechanisms of these complex lung diseases.

Molecular imaging approaches such as PET and SPECT might meet the need for noninvasive biomarkers of lung disease (6). Because inflammatory cell recruitment leads to increased glucose utilization in the lungs, ^{18}F -FDG PET has been widely explored as a biomarker of pulmonary inflammation (7–11). However, standardized quantification approaches are lacking. To isolate the ^{18}F -FDG uptake by parenchymal and immune or inflammatory cells, different methods have been proposed to account for regional variations in the fractions of air, blood, and water, which can vary dramatically with each lung disease. Accounting for these variations will apply equally to new molecular imaging tracers that can measure the activity of specific aspects of lung inflammation or other processes such as fibrosis or endothelial cell activity, as recently reviewed (12,13).

A primary goal for this field is to standardize these approaches for each lung condition. Variability in measured tracer uptake also arises from respiratory motion and differences in reconstruction approaches, among other factors, but these technical issues will be discussed only briefly. Quantification methods for ^{18}F -FDG lung imaging will be reviewed as it is the most widely studied PET tracer to date and serves as a model for all PET and SPECT tracers used for lung imaging.

CLINICAL APPLICATIONS INVESTIGATED WITH ^{18}F -FDG PET IMAGING

Inflammation characterizes several lung diseases, including pneumonia, cystic fibrosis, chronic obstructive pulmonary disease (COPD), acute respiratory distress syndrome (ARDS), asthma, and interstitial lung diseases such as idiopathic pulmonary fibrosis (IPF), among others (7,8,10,11,14–25). Because ARDS, COPD, and IPF can cause significant variability in the amounts of air, blood, and water in the lungs (Fig. 1), we will focus our methodology discussion on these diseases. ARDS is characterized by persistent pulmonary neutrophilic inflammation, edema, and pulmonary hemorrhage. These can lead to signal from unbound ^{18}F -FDG in the increased blood and water fractions as well as specific trapping in neutrophils (26). In COPD, increased numbers of lung neutrophils and macrophages (1,27–30) would be expected to increase the ^{18}F -FDG signal despite a reduction in measured ^{18}F -FDG due to larger air fractions and reduced blood volumes as a result of emphysema (31). Finally, IPF is characterized by interstitial pneumonia along with fibrosis in a characteristic subpleural pattern of distribution, leading to reduced air, increased fibrosis, and alterations in blood volume depending on the stage of fibrosis (32). These differences in pathobiology highlight the need to account for the changes in the cellular and fluid composition in the lungs when interpreting any increased lung ^{18}F -FDG uptake. Exacerbations also represent a confounding factor leading to increased lung inflammation and ^{18}F -FDG uptake; consequently, most studies have been performed in the clinically stable state.

ANALYSIS METHODS AND THEIR APPLICATIONS IN LUNG DISEASES

Quantification Approaches for ^{18}F -FDG

Overview. The ^{18}F -FDG signal within each PET voxel or pre-defined region of interest (ROI) in the lungs represents the contribution of activity in parenchymal (i.e., alveolar), airway wall, vascular wall (e.g., endothelial), and immune cells (known collectively in this paper as lung cells), as well as blood and water (i.e., extracellular fluid). Several factors can degrade the lung cell signal within each voxel, including normal respiratory motion and the presence of air that causes partial-volume averaging within each

voxel. Furthermore, the contribution of signal from compartments without specific binding, such as blood or water in the lungs, further reduces the signal specificity. The ideal parameter for quantifying ^{18}F -FDG lung uptake would reflect metabolic activity only from the cells thought to contribute to lung disease progression, namely the lung cells, to determine their pathogenic role. Therefore, investigations have tested different methods to account for the ^{18}F -FDG signal in the blood and water and to remove the impact of air fraction so that an outcome measure specific to lung cells can be derived. Although distinguishing the metabolism of specific cell types, such as parenchymal versus airway cells, would contribute significantly to mechanistic studies of lung disease, these quantification methods alone cannot provide such information. However,

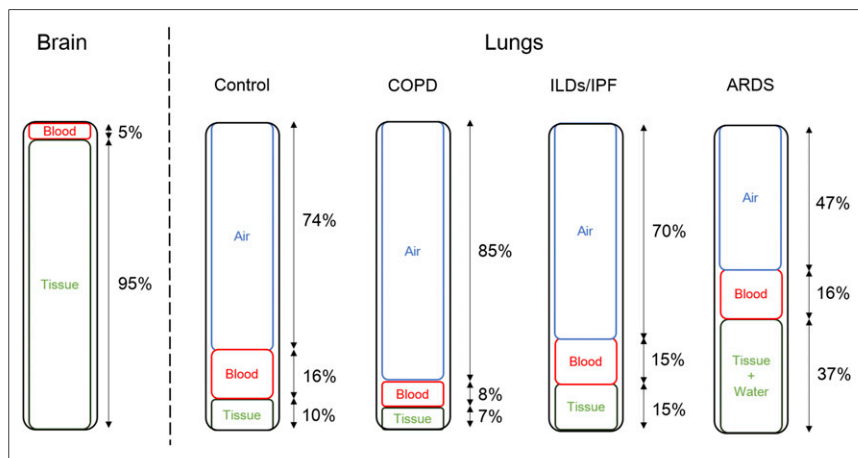


FIGURE 1. Variations in relative proportions of air, blood, lung tissue (parenchymal/airway and endothelial cells) and immune cells, and water by lung disease. Proportions of blood and tissue in brain are also shown for comparison.

finding ways to measure lung cell metabolism specifically would still help better characterize the role of lung cells in promoting disease activity and progression.

The methods used to quantify ^{18}F -FDG uptake in human studies and that will be discussed in this review are summarized in Table 1. Compartmental modeling and Patlak graphical analysis have been used to quantify ^{18}F -FDG uptake from dynamic images. The SUV, with or without dual-time-point imaging, and tissue-to-blood ratio have been used for static images. Different approaches have been further applied to reduce the contribution of background ^{18}F -FDG signal from blood and water in the lungs as well as to reduce partial-volume averaging from air in the ROI. For example, kinetic modeling of dynamic PET data can determine the fractional blood volume, V_B . PET and CT images have been used to estimate the regional air fraction (V_A). Using V_A and

V_B , the ^{18}F -FDG uptake in everything that is not air or blood (i.e., lung cells and water) can be measured. These approaches are reviewed below, followed by a discussion of their specific applications in ARDS, COPD, and IPF.

Kinetic Approaches. The Sokoloff method for quantifying ^{18}F -FDG uptake has served as the basis from which many of the currently used kinetic quantification approaches are derived (33,34). The method was originally developed for measuring brain glucose metabolism, but a key assumption was that the blood volume contribution was negligible relative to the brain parenchymal signal. This was a recognized limitation for applying the method in brain tumors, which have higher V_B than normal brain, necessitating the addition of a blood volume component to the model (35). With V_B estimated at approximately 0.16 in normal lungs, the blood component has a more substantial effect, both in

TABLE 1
Summary of Human Studies Evaluating Quantitative Parameters for ^{18}F -FDG Uptake in Lungs

Cohort	Publication	No. of subjects	Parameters derived from PET imaging data	Correlative data
ARDS	Bellani et al., 2009 (19)	10	Patlak K_i	PFTs
ARDS	Bellani et al., 2011 (18)	13	Patlak K_i	PFTs
ARDS/HV	Grecchi et al., 2016 (20)	11/5	CM K_b , Patlak K_i , SUV	None
ARDS model in HV	Chen et al., 2006 (57)	18	Patlak K_i	BAL neutrophil ^3H -deoxyglucose uptake
ARDS model in HV	Chen et al., 2009 (56)	18	Patlak K_i	BAL
Asthma-BC	Taylor et al., 1996 (24)	9	Patlak K_i	BAL
Asthma-BC	Harris et al., 2011 (8)	6	Patlak K_i	BAL
COPD/asthma/HV	Jones et al., 2003 (10)	6/6/5	Patlak K_{iN}	^{11}C -PBR28 uptake, PFT, sputum
COPD/HV/AATD COPD	Subramanian et al., 2012 (17)	10/10/10	Patlak K_{iN}	PFTs
COPD	Torigian et al., 2013 (39)	49	AFC SUV	None
Cystic fibrosis/control	Labiris et al., 2003 (16)	8/3	Patlak K_i	Sputum
Cystic fibrosis/HV	Chen et al., 2006 (7)	20/7	Patlak K_b , K_{iN}	BAL and PFTs
Cystic fibrosis	Klein et al., 2009 (25)	20	SUV	PFTs, WBC, CRP
Cystic fibrosis/control	Amin et al., 2012 (15)	20/10	SUV	PFTs, sputum, CT metrics
HV	Lambrou et al., 2011 (38)	12	AFC SUV	None
Interstitial lung diseases, including IPF	Groves et al., 2009 (11)	18 IPF/18 other interstitial lung diseases	SUV, TBR	PFTs
IPF	Umeda et al., 2015 (40)	50	Dual-time-point SUV	CT-derived fibrosis score, PFTs
IPF	Holman et al., 2015 (21)	6	ABC Patlak K_b , ABC CM K_i	None
IPF	Win et al., 2012 (22)	13	AFC SUV	None
IPF/control	Win et al., 2014 (23)	25/25	AFC SUV	None
Pneumonia/bronchiectasis	Jones et al., 1997 (9)	5/5	K_{iN}	None

AATD = α_1 antitrypsin deficiency; ABC = air- and blood-corrected; AFC = air fraction-corrected; BAL = bronchoalveolar lavage; BC = bronchoscopic challenge; CM = compartmental model; CRP = C-reactive protein; HV = healthy volunteer; K_{iN} = intercept-normalized K_i ; PFT = pulmonary function test; TBR = target-to-background ratio.

terms of signal and in terms of fractional volume (Fig. 1). Therefore, including V_B in a lung compartment model is even more important.

Furthermore, the lung contains air, which is not the case for other organs. Therefore, an equation that accounts for air and blood fractions separately from the other lung components (Fig. 2) has been published and applied in IPF and COPD (21,36):

$$C_M(t) = V_A C_A(t) + V_B C_B(t) + (1 - V_B - V_A) C_T(t), \quad \text{Eq. 1}$$

where, for a given ROI, $C_M(t)$ is the measured radioactivity concentration, $C_A(t)$ is the air concentration (which is negligible for intravenously administered tracers such as ^{18}F -FDG), $C_B(t)$ is the blood concentration (derived from the dynamic images or blood samples), and $C_T(t)$ is the concentration in lung cells and water (i.e., everything that is not air or blood). V_B can be estimated from the compartment model. V_A can be determined from the attenuation-correction CT scan after downsampling to match the resolution of the PET image (37,38). Therefore, this model enables isolation of the signal from all nonair and nonblood lung components within the ROI ($C_T(t)$). However, when $1 - V_B - V_A$ is less than 0.05 (such as in areas of severe emphysema), the accuracy of this correction should be treated with caution (21).

The Patlak graphical analysis is derived from the general compartment model for tracers that are irreversibly trapped in the target tissue (39,40). This analysis provides 2 parameters: an estimate of the influx rate constant K_i , a measure of ^{18}F -FDG metabolism, and the intercept, which approximates the distribution volume of all the components of the reversible compartments. This method is independent of the number of compartments. Intercept normalization of the K_i has been attempted to account for the impact of air on the measurement. However, from Equation 1, it can be shown that the intercept-normalized Patlak K_i (K_{iN}) is still influenced by both V_A and V_B (34).

With these methods, after correcting for V_A and V_B , the estimated ^{18}F -FDG uptake comes from the lung cells and water (i.e., everything that is not air or blood). In interstitial lung diseases and COPD, this is sufficient because the water fraction is small. However, in conditions with increased edema, such as ARDS, the water fraction can be significant. Using independent measures of the

tissue fraction, V_B , and wet-to-dry ratios (as a measure of water), the normalized K_i determined by the Sokoloff model or a modified 4-compartment model that includes a compartment for nonspecific trapping has been used to isolate the lung cell metabolic activity (41–43). These studies confirm the importance of further evaluating modeling approaches that can account for the effects of air, blood, and water together to measure the lung cell ^{18}F -FDG signal specifically.

Static Image Quantification Approaches. The SUV is the concentration measured within a region or voxel normalized to the patient weight and the injected activity. This is the most common parameter measured clinically for PET because of its simplicity, despite its dependency on metabolism in other organs, body mass, and other confounding factors (44,45). The SUV is also affected by air within ROIs. Normalizing it for the air fraction will likely improve its accuracy as a reflection of lung cell metabolic activity (38). Normalization for blood (such as the tissue-to-blood ratio, as explored in a dog model of ARDS (46)) may further improve the accuracy of V_B ; however, whether this approach is comparable to correcting for V_B as measured by kinetic analysis or other imaging (such as ^{15}O -CO scans) remains to be seen.

Other Contributions to Errors in ^{18}F -FDG Quantification in the Lungs. Reconstruction algorithms used to generate PET images can have a significant impact on quantification accuracy, including issues with nonlinearity and underconvergence when using iterative algorithms (45). Most research in this area has focused on detecting lung cancers, which have high signal relative to the lungs. Therefore, further investigation is needed to optimize reconstruction performance for the diffusely distributed, relatively low count activity typically seen in the lungs.

Accurately matching tissue densities between PET and CT images is also essential for accurate PET image attenuation correction and V_A correction. Gross spatial misregistration of the measured attenuation map and PET activity distribution, which frequently occurs at the diaphragm, is known to cause attenuation correction artifacts (47,48). Additionally, changes in lung density from normal respiration between the PET and CT acquisitions can lead to errors in attenuation and V_A correction, introducing additional variability to serial measurements and limiting accurate assessment of the entire lung volume (49). Improved methods for measuring changes in lung density, as well as algorithms to reduce the impact of respiration (50,51) warrant further investigation to improve PET/CT quantification accuracy in lung disease.

ARDS

The Patlak graphical analysis and compartmental model for quantifying lung ^{18}F -FDG uptake have been evaluated most extensively in animal and human models of ARDS (41,46,52–57). In animal models of ARDS, the Patlak K_i correlated with ^3H -deoxyglucose uptake in airway cells obtained by bronchoalveolar lavage (52), and K_i normalized for tissue fraction (determined independently by ^{13}N - N_2 scans) correlated with lung neutrophil numbers by histology (53). The K_i determined by the Sokoloff model and by a 4-compartment model that includes a water compartment,

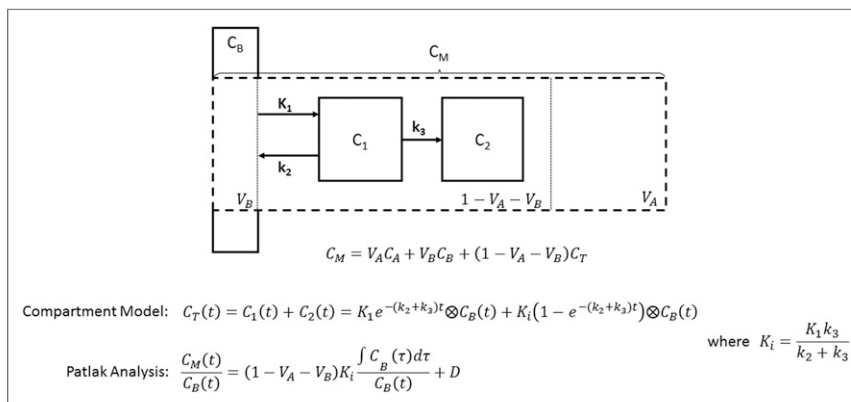


FIGURE 2. Schematic of 3-compartment model describing kinetics of tracer in lung tissue (C_T). C_B is concentration in blood, C_1 is concentration in reversible compartment, C_2 is concentration in irreversible (trapped) compartment, C_T is total tracer concentration in tissue, C_M is measured concentration in voxel or region, C_A is concentration in air, V_A is fractional air volume, V_B is fractional blood volume, and K_i is metabolic rate constant of ^{18}F -FDG. Rate constants are represented as K_1 , k_2 , and k_3 . A full derivation has been previously published (34).

when normalized for tissue fraction, blood fraction, and wet-to-dry ratios determined independently, further demonstrated regional differences in inflammation related to lung neutrophil numbers in correlating regions (42,43). In a healthy volunteer model of endotoxin-induced acute lung inflammation, both K_i and K_{iN} increased, and both correlated weakly with neutrophil numbers (57). Other lung cells also likely contributed to increased ^{18}F -FDG uptake after endotoxin instillation, as shown in mouse models (58,59). These data demonstrate that increased ^{18}F -FDG uptake, quantified by both K_i and K_{iN} , are associated with neutrophilic inflammatory responses in these models.

Further validation with compartment modeling has also been performed in ARDS animal models. Independent measures of blood fraction and extravascular lung water obtained with ^{15}O -CO and ^{15}O -H₂O PET images correlated highly with 3-compartment-model-derived estimates from the ^{18}F -FDG data in a dog model (46). The compartment model estimate of the Patlak K_i also correlated highly with the Patlak-determined K_i . Finally, the addition of another compartment for extravascular lung water improved the model fits for estimating lung ^{18}F -FDG uptake in a sheep model, supporting the applicability of this approach in ARDS (41). Human studies in patients with ARDS have used the Patlak K_i without a correction for lung density or blood fraction but instead have simply compared the K_i in normal versus dense tissue separately across subjects (19,20).

COPD

Given the validation of CT for quantifying emphysema (60), ^{18}F -FDG PET imaging holds great potential for providing additional inflammation-specific information. The K_{iN} has been the primary metric for quantifying ^{18}F -FDG uptake in COPD and asthma (10,17). Upper lung zone K_{iN} correlates negatively with pulmonary function and positively with CT-determined emphysema severity (Fig. 3) (17). K_{iN} may also correlate with a chronic bronchitis phenotype (published in abstract form (61)), suggesting the clinical relevance of this parameter. However, K_{iN} is not increased in subjects with stable asthma when compared with healthy volunteers (10). Furthermore, no difference in the whole-lung K_i was noted between COPD patients and healthy volunteers after

accounting for V_A and V_B using compartmental modeling (published in abstract form (36)). The whole-lung SUV normalized for the CT-determined air fraction has also been explored in patients with COPD with emphysema but has not been compared with tissue-based or clinical outcome measures (39). Finally, both infections and allergens frequently trigger asthma and COPD exacerbations. K_{iN} likely increases with both triggers, as has been shown in lung transplant recipients with infection (62) and in subjects with asthma after allergen challenge (8,24). Therefore, ^{18}F -FDG PET scans will need to be obtained during periods of clinical stability to study the accuracy of different quantitative parameters for measuring lung disease-specific inflammation. These studies together highlight the need to continue defining the relationship of the different ^{18}F -FDG PET quantitative parameters to outcome measures to determine which metrics are the best surrogate measures of inflammation.

Interstitial Lung Diseases/IPF

Increased ^{18}F -FDG uptake has been reported in the lungs of patients with IPF using the SUV_{max} with or without correction for the air fraction determined by CT (11,22,23,38). A study using dual-time-point imaging further demonstrated that persistently increased ^{18}F -FDG uptake predicted a more rapid decline in lung function and higher mortality in patients with IPF (40). Glucose transporter 1 is expressed on erythrocytes and inflammatory cells in lung sections from patients with IPF, with positive erythrocyte but no inflammatory cell staining at sites of angiogenesis (63). Catabolism genes associated with increased glucose metabolism have increased expression by microarray analysis of human IPF samples (64). These data together support the potential clinical relevance of measuring ^{18}F -FDG uptake in this disease. However, a modeling analysis using Equation 1 actually showed decreased ^{18}F -FDG uptake in the fibrotic areas of the lung compared with areas that appeared normal by CT when accounting for V_A and V_B (Fig. 4) (21). These findings still need to be compared with a similar analysis of healthy lungs, but they highlight how these modeling approaches can change the interpretation of ^{18}F -FDG uptake in IPF. Additionally, improved registration methods are needed to accurately correct for attenuation changes in the periphery, where fibrosis typically occurs. Collectively, these results highlight the need for a gold standard comparator to validate the most relevant ^{18}F -FDG parameters for IPF.

ISSUES AND SUGGESTED CONSIDERATIONS

The methodologic issues discussed above highlight the need for further studies to determine and validate the most appropriate approaches for lung imaging. Based on discussions among the authors, the following summary statements were created to capture the key aspects that should be considered for future validation studies.

PET measurements of ^{18}F -FDG concentration in the lung are influenced by the relative volumes of lung cells, air, blood, and water.

It is essential to understand how the different methodologies account for the relative

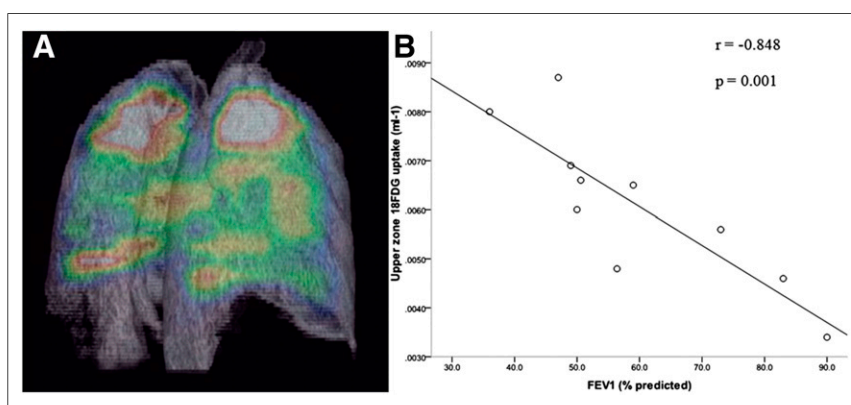


FIGURE 3. Increased intercept-normalized Patlak K_i in upper lobes of lungs of COPD patients correlates inversely with pulmonary function testing. (A) Three-dimensional imaging illustrating predominantly apical distribution of pulmonary ^{18}F -FDG uptake in patient with COPD. Maximum signal of this color spectrum is represented by white, and minimum signal by black. (B) Relationship between upper-zone ^{18}F -FDG uptake and forced expiratory volume in 1 s (FEV_{1s}) (percentage predicted) in COPD group ($n = 10$). One-tailed P value is shown. (Reprinted with permission of (17).)

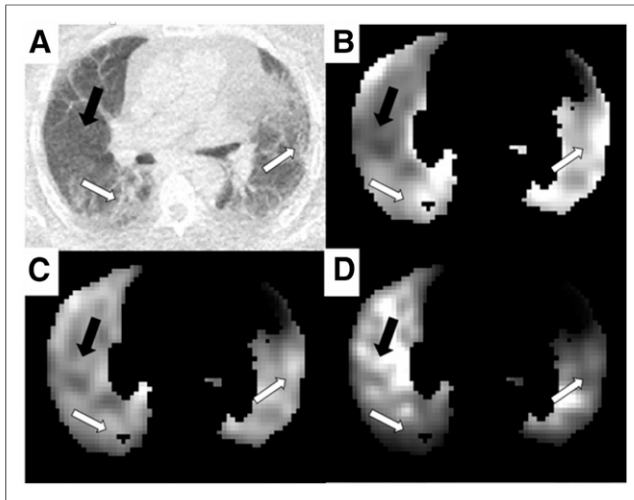


FIGURE 4. Patlak K_i parametric images from IPF patient undergoing dynamic ^{18}F -FDG study. (A) CT image displaying regions of obvious fibrosis (white arrows) and region of normal-appearing tissue (black arrow). (B–D) Patlak parametric images before air and blood correction (B), after air fraction correction (C), and after air and blood fraction correction (D). All images have been normalized such that they can be shown on same arbitrary gray scale. Images have been masked to show only lung. (Reprinted from (21).)

volumes of air, blood, and water when analyzing PET data to obtain measurements of ^{18}F -FDG concentration or kinetic parameters in the lungs.

Relative air, blood, and water volumes vary within the lung significantly among respiratory diseases and may depend on disease severity. Without correction, these differences can potentially cause significant variation in the quantified ^{18}F -FDG PET signal.

Although the K_{iN} has been used as the endpoint in many previous publications on lung ^{18}F -FDG uptake, it does not adequately account for the impact of air and blood.

Compartmental modeling is a standard methodology for PET image analysis that can be applied to lung ^{18}F -FDG data. Using CT data to estimate the air fraction and a kinetic model to account for the blood fraction, it is possible to quantify the glucose metabolic rate for all remaining lung components (i.e., lung cells and water) with ^{18}F -FDG. The compartment model may need modification to account for increased water (i.e., in ARDS). However, no complete modeling solution that includes air, blood, and water fraction corrections has yet been tested.

CONCLUSION

Investigating ^{18}F -FDG uptake and kinetics in diffuse lung diseases is becoming more common for phenotyping, monitoring disease progression, and assessing the efficacy of novel targeted treatments. For this purpose, ideally ^{18}F -FDG uptake is measured specifically in the lung cells that contribute to disease pathogenesis. However, regional variations in air, blood, and water fractions can lead to inaccurate estimates of the lung cell tracer concentration. Without accounting for these effects, PET quantification accuracy is compromised and could confound the correct interpretation of the PET parameters in the context of the known biology.

To improve confidence in lung PET quantification, validation of methods to account for air, blood, and water fractions using

independent techniques would be desirable. For example, the data provided by serial ^{15}O -CO, ^{15}O -H₂O, and dynamic ^{18}F -FDG imaging in the same imaging session would provide increased confidence in the estimated blood and water volumes (37). Furthermore, the reproducibility and reliability of these outcome measures will need to be assessed in patients with a range of diffuse lung diseases and in healthy controls. Finally, comparison with clinical information, such as that from CT, lung tissue sampling, or pulmonary function testing, can provide additional context for correctly interpreting PET quantification parameters. These are recommended as examples of future work to promote the standardization of PET analysis methods for lung imaging.

The conclusions laid out in this paper point to the need for a lung imaging collaboration that encourages data and protocol sharing. This will allow validation across the range of lung diseases to be studied, ultimately producing a standardized acquisition and processing methodology. Although not discussed as a focus of this review, these collaborative efforts will also facilitate the evaluation of the most appropriate reconstruction and motion correction algorithms and imaging protocols to optimize lung PET imaging. These efforts will ensure that accurate, reproducible, and clinically interpretable images and estimated parameters can be produced together with the requisite clinical validation before use in clinical trials of established or novel therapies.

REFERENCES

- Martinez FJ, Donohue JF, Rennard SI. The future of chronic obstructive pulmonary disease treatment: difficulties of and barriers to drug development. *Lancet*. 2011;378:1027–1037.
- Morbidity and Mortality: 2012 Chart Book on Cardiovascular, Lung, and Blood Diseases*. Bethesda, MD: National Institutes of Health; National Heart, Lung, and Blood Institute; 2012.
- Arrowsmith J. Trial watch: phase III and submission failures: 2007–2010. *Nat Rev Drug Discov*. 2011;10:87.
- Adams CP, Brantner VV. Estimating the cost of new drug development: is it really 802 million dollars? *Health Aff (Millwood)*. 2006;25:420–428.
- Biomarker qualification program. <http://www.fda.gov/Drugs/DevelopmentApprovalProcess/DrugDevelopmentToolsQualificationProgram/ucm284076.htm>. U.S. Food and Drug Administration website. Accessed January 11, 2017.
- Chen DL, Kinahan PE. Multimodality molecular imaging of the lung. *J Magn Reson Imaging*. 2010;32:1409–1420.
- Chen DL, Ferkol TW, Mintun MA, Pittman JE, Rosenbluth DB, Schuster DP. Quantifying pulmonary inflammation in cystic fibrosis with positron emission tomography. *Am J Respir Crit Care Med*. 2006;173:1363–1369.
- Harris RS, Venegas JG, Wongviriyawong C, et al. ^{18}F -FDG uptake rate is a biomarker of eosinophilic inflammation and airway response in asthma. *J Nucl Med*. 2011;52:1713–1720.
- Jones HA, Sriskandan S, Peters A, et al. Dissociation of neutrophil emigration and metabolic activity in lobar pneumonia and bronchiectasis. *Eur Respir J*. 1997;10:795–803.
- Jones HA, Marino PS, Shakur BH, Morrell NW. In vivo assessment of lung inflammatory cell activity in patients with COPD and asthma. *Eur Respir J*. 2003;21:567–573.
- Groves AM, Win T, Screaton NJ, et al. Idiopathic pulmonary fibrosis and diffuse parenchymal lung disease: implications from initial experience with ^{18}F -FDG PET/CT. *J Nucl Med*. 2009;50:538–545.
- Scherer PM, Chen DL. Imaging pulmonary inflammation. *J Nucl Med*. 2016;57:1764–1770.
- Chen DL, Schiebler ML, Goo JM, van Beek EJ. PET imaging approaches for inflammatory lung diseases: current concepts and future directions. *Eur J Radiol*. 2017;86:371–376.
- Jones HA, Clark R, Rhodes C, Schofield J, Krausz T, Haslett C. In vivo measurement of neutrophil activity in experimental lung inflammation. *Am J Respir Crit Care Med*. 1994;149:1635–1639.
- Amin R, Charron M, Grinblat L, et al. Cystic fibrosis: detecting changes in airway inflammation with FDG PET/CT. *Radiology*. 2012;264:868–875.

16. Labiris NR, Nahmias C, Freitag AP, Thompson ML, Dolovich MB. Uptake of ¹⁸F-fluorodeoxyglucose in the cystic fibrosis lung: a measure of lung inflammation? *Eur Respir J*. 2003;21:848–854.
17. Subramanian DR, Jenkins L, Edgar R, Quraishi N, Stockley RA, Parr DG. Assessment of pulmonary neutrophilic inflammation in emphysema by quantitative positron emission tomography. *Am J Respir Crit Care Med*. 2012;186:1125–1132.
18. Bellani G, Guerra L, Musch G, et al. Lung regional metabolic activity and gas volume changes induced by tidal ventilation in patients with acute lung injury. *Am J Respir Crit Care Med*. 2011;183:1193–1199.
19. Bellani G, Messa C, Guerra L, et al. Lungs of patients with acute respiratory distress syndrome show diffuse inflammation in normally aerated regions: a [¹⁸F]-fluoro-2-deoxy-D-glucose PET/CT study. *Crit Care Med*. 2009;37:2216–2222.
20. Grecchi E, Veronese M, Moresco RM, et al. Quantification of dynamic [¹⁸F]FDG PET studies in acute lung injury. *Mol Imaging Biol*. 2016;18:143–152.
21. Holman BF, Cuplov V, Millner L, et al. Improved correction for the tissue fraction effect in lung PET/CT imaging. *Phys Med Biol*. 2015;60:7387–7402.
22. Win T, Lambrou T, Hutton BF, et al. ¹⁸F-fluorodeoxyglucose positron emission tomography pulmonary imaging in idiopathic pulmonary fibrosis is reproducible: implications for future clinical trials. *Eur J Nucl Med Mol Imaging*. 2012;39:521–528.
23. Win T, Thomas BA, Lambrou T, et al. Areas of normal pulmonary parenchyma on HRCT exhibit increased FDG PET signal in IPF patients. *Eur J Nucl Med Mol Imaging*. 2014;41:337–342.
24. Taylor IK, Hill AA, Hayes M, et al. Imaging allergen-invoked airway inflammation in atopic asthma with [¹⁸F]-fluorodeoxyglucose and positron emission tomography. *Lancet*. 1996;347:937–940.
25. Klein M, Cohen-Cymberek M, Armoni S, et al. ¹⁸F-fluorodeoxyglucose-PET/CT imaging of lungs in patients with cystic fibrosis. *Chest*. 2009;136:1220–1228.
26. Butt Y, Kurdowska A, Allen TC. Acute lung injury: a clinical and molecular review. *Arch Pathol Lab Med*. 2016;140:345–350.
27. Barnes PJ. Alveolar macrophages as orchestrators of COPD. *COPD*. 2004;1:59–70.
28. Barnes PJ. Immunology of asthma and chronic obstructive pulmonary disease. *Nat Rev Immunol*. 2008;8:183–192.
29. Faner R, Cruz T, Agusti A. Immune response in chronic obstructive pulmonary disease. *Expert Rev Clin Immunol*. 2013;9:821–833.
30. Gutierrez P, Closa D, Piner R, Bulbena O, Menendez R, Torres A. Macrophage activation in exacerbated COPD with and without community-acquired pneumonia. *Eur Respir J*. 2010;36:285–291.
31. Jørgensen K, Müller MF, Nel J, Upton RN, Houtz E, Ricksten SE. Reduced intrathoracic blood volume and left and right ventricular dimensions in patients with severe emphysema: an MRI study. *Chest*. 2007;131:1050–1057.
32. Meltzer EB, Noble PW. Idiopathic pulmonary fibrosis. *Orphanet J Rare Dis*. 2008;3:8.
33. Sokoloff L, Reivich M, Kennedy C, et al. The [¹⁴C]deoxyglucose method for the measurement of local cerebral glucose utilization: theory, procedure, and normal values in the conscious and anesthetized albino rat. *J Neurochem*. 1977;28:897–916.
34. Gunn RN, Gunn SR, Cunningham VJ. Positron emission tomography compartmental models. *J Cereb Blood Flow Metab*. 2001;21:635–652.
35. Hawkins RA, Phelps ME, Huang SC. Effects of temporal sampling, glucose metabolic rates, and disruptions of the blood-brain barrier on the FDG model with and without a vascular compartment: studies in human brain tumors with PET. *J Cereb Blood Flow Metab*. 1986;6:170–183.
36. Coello C, Fisk M, Wilson F, et al. Quantitative analysis of dynamic ¹⁸F-FDG in lungs of HV and COPD subjects [abstract]. *J Nucl Med*. 2016;57(suppl 2):482.
37. Rhodes CG, Hughes JM. Pulmonary studies using positron emission tomography. *Eur Respir J*. 1995;8:1001–1017.
38. Lambrou T, Groves AM, Erlandsson K, et al. The importance of correction for tissue fraction effects in lung PET: preliminary findings. *Eur J Nucl Med Mol Imaging*. 2011;38:2238–2246.
39. Torigian DA, Dam V, Chen X, et al. In vivo quantification of pulmonary inflammation in relation to emphysema severity via partial volume corrected ¹⁸F-FDG-PET using computer-assisted analysis of diagnostic chest CT. *Hell J Nucl Med*. 2013;16:12–18.
40. Umeda Y, Demura Y, Morikawa M, et al. Prognostic value of dual-time-point ¹⁸F-FDG PET for idiopathic pulmonary fibrosis. *J Nucl Med*. 2015;56:1869–1875.
41. Schroeder T, Vidal Melo MF, Musch G, Harris RS, Venegas JG, Winkler T. Modeling pulmonary kinetics of 2-deoxy-2-[¹⁸F]fluoro-D-glucose during acute lung injury. *Acad Radiol*. 2008;15:763–775.
42. de Prost N, Costa EL, Wellman T, et al. Effects of surfactant depletion on regional pulmonary metabolic activity during mechanical ventilation. *J Appl Physiol*. 2011;111:1249–1258.
43. de Prost N, Feng Y, Wellman T, et al. ¹⁸F-FDG kinetics parameters depend on the mechanism of injury in early experimental acute respiratory distress syndrome. *J Nucl Med*. 2014;55:1871–1877.
44. Carlier T, Bailly C. State-of-the-art and recent advances in quantification for therapeutic follow-up in oncology using PET. *Front Med (Lausanne)*. 2015;2:18.
45. Gámez-Cenzano C, Pino-Sorroche F. Standardization and quantification in FDG-PET/CT imaging for staging and restaging of malignant disease. *PET Clin*. 2014;9:117–127.
46. Chen DL, Mintun MA, Schuster DP. Comparison of methods to quantitate ¹⁸F-FDG uptake with PET during experimental acute lung injury. *J Nucl Med*. 2004;45:1583–1590.
47. Gilman MD, Fischman AJ, Krishnasetty V, Halpern EF, Aquino SL. Optimal CT breathing protocol for combined thoracic PET/CT. *AJR*. 2006;187:1357–1360.
48. Goerres GW, Kamel E, Heidelberg TN, Schwitter MR, Burger C, von Schulthess GK. PET-CT image co-registration in the thorax: influence of respiration. *Eur J Nucl Med Mol Imaging*. 2002;29:351–360.
49. Holman BF, Cuplov V, Hutton BF, Groves AM, Thielemans K. The effect of respiratory induced density variations on non-TOF PET quantitation in the lung. *Phys Med Biol*. 2016;61:3148–3163.
50. Prior JO, Peguret N, Pomoni A, et al. Reduction of respiratory motion during PET/CT by pulsatile-flow ventilation: a first clinical evaluation. *J Nucl Med*. 2016;57:416–419.
51. Grootjans W, Tixier F, van der Vos CS, et al. The impact of optimal respiratory gating and image noise on evaluation of intratumor heterogeneity on ¹⁸F-FDG PET imaging of lung cancer. *J Nucl Med*. 2016;57:1692–1698.
52. Chen DL, Schuster DP. Positron emission tomography with [¹⁸F]fluorodeoxyglucose to evaluate neutrophil kinetics during acute lung injury. *Am J Physiol Lung Cell Mol Physiol*. 2004;286:L834–L840.
53. Musch G, Venegas JG, Bellani G, et al. Regional gas exchange and cellular metabolic activity in ventilator-induced lung injury. *Anesthesiology*. 2007;106:723–735.
54. Costa EL, Musch G, Winkler T, et al. Mild endotoxemia during mechanical ventilation produces spatially heterogeneous pulmonary neutrophilic inflammation in sheep. *Anesthesiology*. 2010;112:658–669.
55. Schroeder T, Vidal Melo MF, Musch G, Harris RS, Venegas JG, Winkler T. Image-derived input function for assessment of ¹⁸F-FDG uptake by the inflamed lung. *J Nucl Med*. 2007;48:1889–1896.
56. Chen DL, Bedient TJ, Kozłowski J, et al. [¹⁸F]fluorodeoxyglucose positron emission tomography for lung antiinflammatory response evaluation. *Am J Respir Crit Care Med*. 2009;180:533–539.
57. Chen DL, Rosenbluth DB, Mintun MA, Schuster DP. FDG-PET imaging of pulmonary inflammation in healthy volunteers after airway instillation of endotoxin. *J Appl Physiol (1985)*. 2006;100:1602–1609.
58. Zhou Z, Kozłowski J, Goodrich AL, Markman N, Chen DL, Schuster DP. Molecular imaging of lung glucose uptake after endotoxin in mice. *Am J Physiol Lung Cell Mol Physiol*. 2005;289:L760–L768.
59. Saha D, Takahashi K, de Prost N, et al. Micro-autoradiographic assessment of cell types contributing to 2-deoxy-2-[¹⁸F]fluoro-D-glucose uptake during ventilator-induced and endotoxemic lung injury. *Mol Imaging Biol*. 2013;15:19–27.
60. Nambu A, Zach J, Schroeder J, et al. Quantitative computed tomography measurements to evaluate airway disease in chronic obstructive pulmonary disease: relationship to physiological measurements, clinical index and visual assessment of airway disease. *Eur J Radiol*. 2016;85:2144–2151.
61. Chen DL, Azulay D-O, Atkinson JJ, et al. Reproducibility of positron emission tomography (PET)-measured [¹⁸F]fluorodeoxyglucose (¹⁸F]FDG) uptake as a marker of lung inflammation in chronic obstructive pulmonary disease (COPD) [abstract]. *Am J Respir Crit Care Med*. 2011;183:A6449.
62. Jones HA, Donovan T, Goddard MJ, et al. Use of ¹⁸F-FDG-pet to discriminate between infection and rejection in lung transplant recipients. *Transplantation*. 2004;77:1462–1464.
63. El-Chemaly S, Malide D, Yao J, et al. Glucose transporter-1 distribution in fibrotic lung disease: association with [¹⁸F]-2-fluoro-2-deoxyglucose-PET scan uptake, inflammation, and neovascularization. *Chest*. 2013;143:1685–1691.
64. Kaminski N, Rosas IO. Gene expression profiling as a window into idiopathic pulmonary fibrosis pathogenesis: can we identify the right target genes? *Proc Am Thorac Soc*. 2006;3:339–344.