

SCIENTIFIC REPORTS



OPEN

Integrin $\alpha 5\beta 1$ expression on dopaminergic neurons is involved in dopaminergic neurite outgrowth on striatal neurons

Received: 19 September 2016

Accepted: 06 January 2017

Published: 08 February 2017

Yasuhiko Izumi¹, Seiko Wakita¹, Chisato Kanbara¹, Toshie Nakai¹, Akinori Akaike^{1,2} & Toshiaki Kume¹

During development, dopaminergic neurons born in the substantia nigra extend their axons toward the striatum. However, the mechanisms by which the dopaminergic axons extend the striatum to innervate their targets remain unclear. We previously showed that paired-cultivation of mesencephalic cells containing dopaminergic neurons with striatal cells leads to the extension of dopaminergic neurites from the mesencephalic cell region to the striatal cell region. The present study shows that dopaminergic neurites extended along striatal neurons in the paired-cultures of mesencephalic cells with striatal cells. The extension of dopaminergic neurites was suppressed by the pharmacological inhibition of integrin $\alpha 5\beta 1$. Using lentiviral vectors, short hairpin RNA (shRNA)-mediated knockdown of integrin $\alpha 5$ in dopaminergic neurons suppressed the neurite outgrowth to the striatal cell region. In contrast, the knockdown of integrin $\alpha 5$ in non-dopaminergic mesencephalic and striatal cells had no effect. Furthermore, overexpression of integrin $\alpha 5$ in dopaminergic neurons differentiated from embryonic stem cells enhanced their neurite outgrowth on striatal cells. These results indicate that integrin $\alpha 5\beta 1$ expression on dopaminergic neurons plays an important role in the dopaminergic neurite outgrowth on striatal neurons.

Dopaminergic neurons in the substantia nigra pars compacta project to the dorsolateral striatum, thus forming the nigrostriatal projection. In humans, a selective loss of this projection is a pathological hallmark of Parkinson disease (PD). Although the exact causes of neuronal loss remain unclear, the regeneration of this pathway shows great promise as a therapy for PD. Transplantation of fetal nigral dopamine neurons for PD patients gives rise to substantial symptomatic relief for a decade¹, although it has been reported that dyskinesia occurs after transplantation². Olanow *et al.*³ suggest that it is likely that off-medication dyskinesia represent a variant of diphasic dyskinesia due to incomplete or aberrant reinnervation of the striatum. To successfully reestablish the lost nigrostriatal pathway, considerable knowledge regarding the axon guidance signals present in the extracellular milieu is required.

In rat and mouse embryos, dopaminergic axons, which begin their projection in a dorsal direction from the ventrocaudal region of the midbrain, are rostrally guided by Wnt5a and Semaphorin 3F as chemorepellants and Wnt7b as a chemoattractant^{4–7}. The dopaminergic axons rostrally elongate along the medial forebrain bundle as they move ventrally to the thalamus. Next, the axons are directed into the striatum via the repulsive effect of ephrin-A5⁸. Although a correlation between dopaminergic innervation and the striatal distribution of glycosaminoglycans during the early postnatal period has been suggested⁹, it remains unclear how the dopaminergic axons extend to the striatum in order to innervate their targets.

To address this issue, we previously reconstructed the dopaminergic innervation of striatal cells using dissociated primary cultures¹⁰. When mesencephalic cells containing dopaminergic neurons were adjacently paired-cultured with striatal cells, dopaminergic neurites extended from the mesencephalic cell region to the striatal cell region. In addition, this paired-cultivation enables the quantitative evaluation of dopaminergic neurite

¹Department of Pharmacology, Graduate School of Pharmaceutical Sciences, Kyoto University, 46-29 Shimoadachi-cho, Sakyo-ku, Kyoto 606-8501, Japan. ²Department of Cellular Pharmacology, Graduate School of Pharmaceutical Sciences, Nagoya University, Furo-cho, Chikusa-ku, Nagoya 464-8601, Japan. Correspondence and requests for materials should be addressed to T.K. (email: tkume@pharm.kyoto-u.ac.jp)

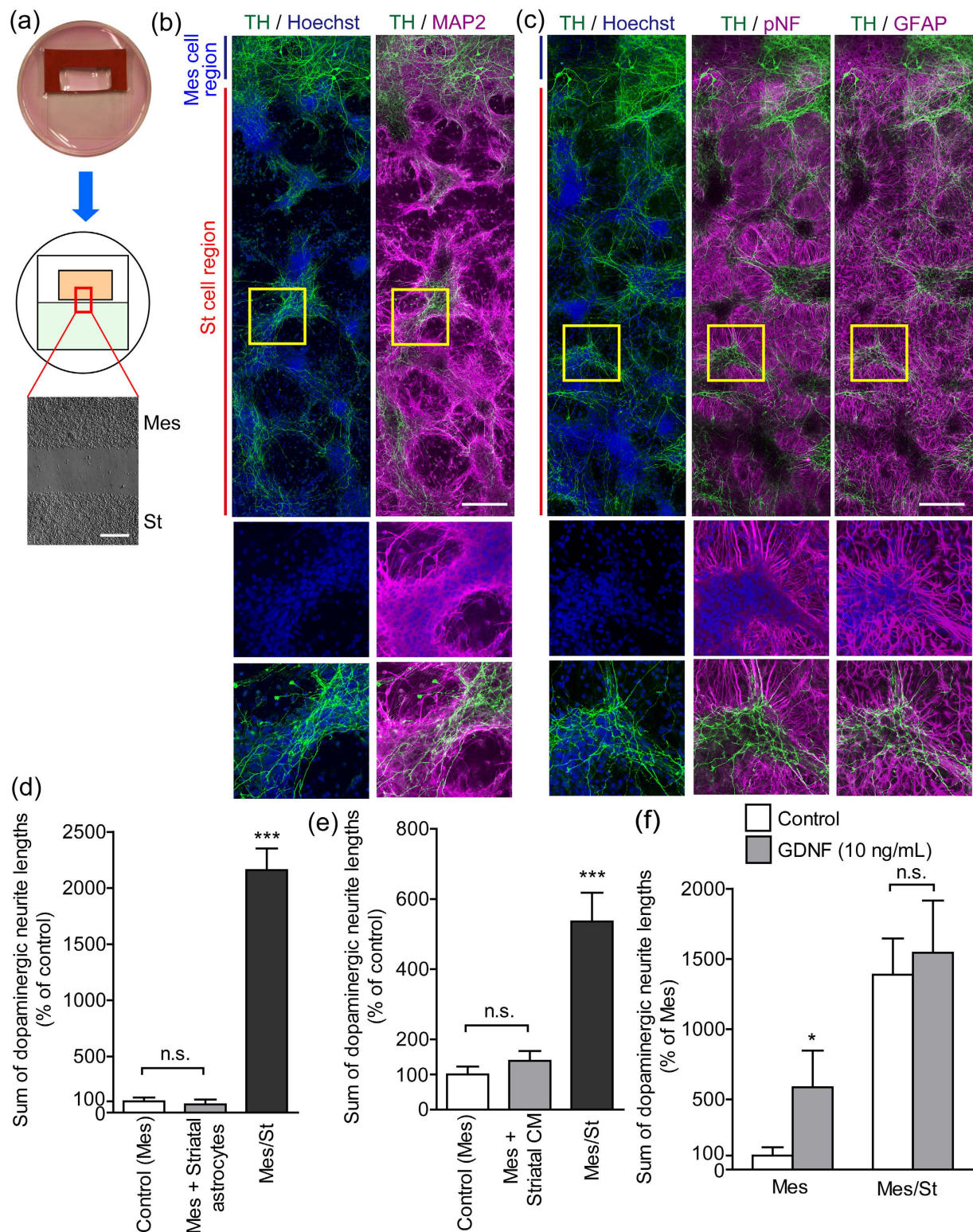


Figure 1. The effects of striatal cells on dopaminergic neurite outgrowth in paired-cultures of mesencephalic and striatal cells.

(a) Scheme of paired-cultures of mesencephalic and striatal cells. A coverslip in a 35 mm culture dish was divided into two compartments with an isolation wall. Mesencephalic cells were plated inside the isolation wall and striatal cells were plated outside. The isolation wall was removed 24 h after plating. A microphotograph shows the vicinity of the borderline. The upper region is comprised of mesencephalic cells (Mes), and the lower region is comprised of striatal cells (St). Scale bar = 200 μ m. (b and c) Representative photographs of the dopaminergic innervation of striatal cells. Mesencephalic cells were paired-cultured with striatal cells for 10 days, and the paired-cultures were processed for TH, MAP2, pNF, and GFAP immunostaining and nuclear staining. Fluorescence images show the striatal cell region near the borderline. The lower images were high-power fields outlined by a square in the upper images. Scale bar = 200 μ m. (d) Striatal astrocytes had

no effect on dopaminergic neurite outgrowth. Control (Mes) group: mesencephalic cells were cultured alone for 10 days. Mes + Striatal astrocytes group: mesencephalic cells were paired-cultured with astrocytes derived from the striatum. Mes/St group: mesencephalic cells were paired-cultured with striatal cells. (e) Striatal CM did not affect dopaminergic neurite outgrowth. Mes + Striatal CM group: mesencephalic cells were cultured in CM prepared from striatal cultures. (f) GDNF did not enhance dopaminergic neurite outgrowth in paired-cultures of mesencephalic and striatal cells. Mesencephalic cells only or paired-cultures of mesencephalic and striatal cells were incubated in the presence or absence of GDNF (10 ng/mL) for 10 days. * $p < 0.05$ and *** $p < 0.001$ vs. control (Mes) group. n.s.: not significant.

outgrowth to the striatal cell region. In the present study, we pharmacologically and genetically examined the precise mechanisms behind the dopaminergic neurite outgrowth on striatal neurons in the paired-cultures. Here, we show that integrin $\alpha 5\beta 1$ expression on dopaminergic neurons is involved in the dopaminergic neurite outgrowth on striatal neurons. In addition, we investigated the neurite outgrowth of integrin $\alpha 5$ -overexpressing dopaminergic neurons derived from embryonic stem (ES) cells on striatal cultures.

Results

Dopaminergic neurite outgrowth on striatal neurons in paired-cultures of mesencephalic and striatal cells. Our previous study¹⁰ demonstrated that dopaminergic neurites extended from the mesencephalic cell region to the striatal cell region after 10 days of paired-cultivation of mesencephalic and striatal cells (Fig. 1a). We used fluorescence staining to clarify the pattern of dopaminergic neurite outgrowth to the striatal cell region. Nuclear staining with Hoechst 33258 in the striatal cell region revealed that striatal cells formed clusters after 10 days in culture. The clusters of striatal cells were surrounded by microtubule associated protein 2 (MAP2)-positive dendrites of striatal neurons, suggesting that striatal neurons tended to form clusters (Fig. 1b). Phosphorylated neurofilaments (pNF)-positive axons of striatal neurons connected the clusters (Fig. 1c). Importantly, tyrosine hydroxylase (TH)-positive dopaminergic neurites extended along the clusters of striatal neurons (Fig. 1b and c). Glial fibrillary acidic protein (GFAP)-positive astrocytes were mainly localized to the striatal cell region outside of the clusters (Fig. 1c). In our previous report¹⁰, synaptophysin was expressed at the growth cones of dopaminergic neurites which extended along the striatal neuronal clusters. To examine the involvement of striatal astrocytes in dopaminergic neurite outgrowth, mesencephalic cells were adjacently paired-cultured with striatal astrocytes for 10 days. The paired-cultivation with striatal astrocytes had no effect on dopaminergic neurite outgrowth (Fig. 1d). To examine the involvement of humoral factors from striatal cells in dopaminergic neurite outgrowth, mesencephalic cells were cultured in striatal cell-conditioned medium (CM) for 10 days. The striatal CM had no effect on dopaminergic neurite outgrowth (Fig. 1e). We previously reported that glial derived neurotrophic factor (GDNF) extended dopaminergic neurites beyond the mesencephalic cell region in mesencephalic cell cultures¹⁰. However, GDNF did not enhance dopaminergic neurite outgrowth to the striatal cell region in the paired-cultures of mesencephalic and striatal cells (Fig. 1f), suggesting that the signaling of GDNF was saturated.

Inhibition of integrin $\alpha 5\beta 1$ suppressed dopaminergic neurite outgrowth to the striatal cell region. Cell adhesion molecules, such as neural cell adhesion molecule (NCAM) and integrin, play important roles in the signaling of GDNF for dopaminergic neurite outgrowth^{11–13}. The function-blocking antibody anti-NCAM (AB5032), which inhibited GDNF-induced dopaminergic neurite outgrowth (data not shown), had no effect on the dopaminergic neurite outgrowth to the striatal cell region in the paired-cultures of mesencephalic and striatal cells (Fig. 2a). In contrast, the synthetic Arg-Gly-Asp-Ser (RGDS) peptide, an inhibitor of RGD-binding integrins, significantly suppressed neurite outgrowth, whereas treatment with a glutamic acid-substituted control peptide (RGES) showed no effect (Fig. 2b and c). To narrow down the candidates of integrin heterodimers, the effects of more selective blocking peptides were examined. ATN-161 (Ac-PHSCN-NH₂), which is derived from the synergy region of fibronectin, binds to both $\alpha 5\beta 1$ and $\alpha V\beta 3$ *in vitro*¹⁴. Cyclo(RGDfV), a cyclic pentapeptide containing the RGD sequence, is a selective $\alpha V\beta 3$ antagonist¹⁵. A5-1 (VILVLF) is an antagonistic peptide against integrin $\alpha 5\beta 1$ ¹⁶. ATN-161 and A5-1 significantly suppressed dopaminergic neurite outgrowth to the striatal cell region, whereas treatment with cyclo(RGDfV) had no effect (Fig. 2d–f). To confirm the involvement of integrin $\alpha 5\beta 1$, the effects of function-blocking antibodies were examined. Anti-integrin $\alpha 5$ (HMa5-1) and anti-integrin $\beta 1$ (Ha2/5) antibodies have function-blocking properties^{17,18}. These antibodies significantly suppressed dopaminergic neurite outgrowth to the striatal cell region, whereas treatment with control IgG had no effect (Fig. 2g–i).

Expression of integrin $\alpha 5\beta 1$ in dopaminergic neurons. We examined the expression of integrin mRNA (integrin $\alpha 1, 2, 4, 5, 6, 7, 8, V$, and $\beta 1, 2, 3, 4, 5$) in mesencephalic and striatal cultures. Whole-brain samples from adult rats were used as a positive control. Although there were differences in expression levels, all of the integrin mRNAs tested in this study were expressed, except for integrin $\beta 4$ in mesencephalic cultures and integrin $\alpha 2$ in striatal cultures (Fig. 3a). Integrin $\alpha 5$ and $\beta 1$ were expressed in dopaminergic soma (Fig. 3b). Furthermore, integrin $\alpha 5$ and $\beta 1$ were intensely expressed in dopaminergic growth cones and varicosities (Fig. 3c). The percentage of dopaminergic neurons expressing integrin $\alpha 5$ and $\beta 1$ was $96.7 \pm 1.9\%$ and $93.3 \pm 2.1\%$, respectively. To examine the involvement of integrin $\alpha 5\beta 1$ in dopaminergic neurite outgrowth, the outside of the mesencephalic cell region was coated with extracellular matrix. Fibronectin is a glycoprotein that binds to integrin $\alpha 5\beta 1$. The fibronectin coating outside of the mesencephalic cell region enhanced dopaminergic neurite outgrowth in mesencephalic cell cultures. Collagen and laminin are extracellular matrices that bind to integrin family members other than integrin $\alpha 5\beta 1$. The collagen type I coating enhanced dopaminergic neurite outgrowth, whereas the

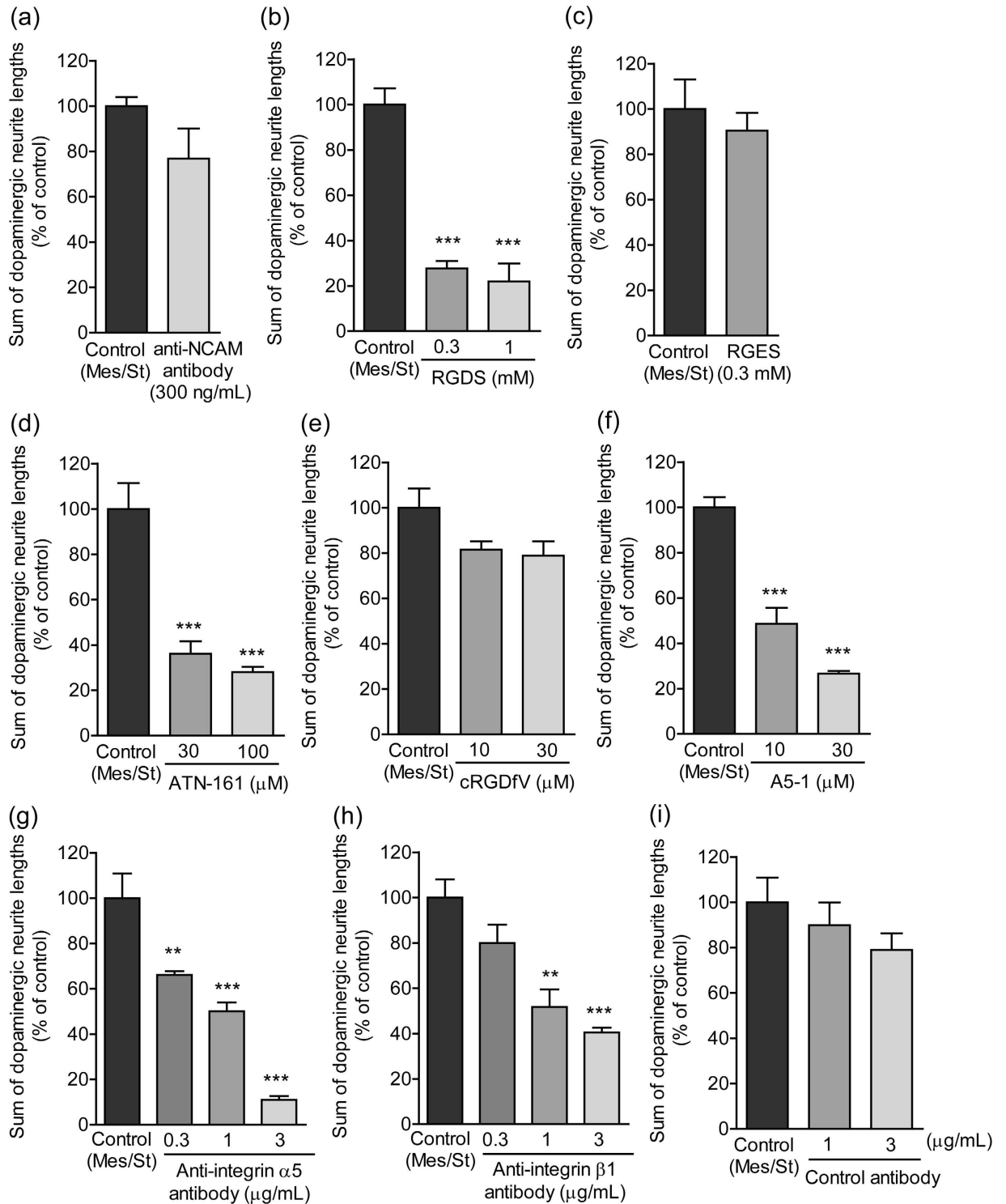


Figure 2. Involvement of cell adhesion molecules in dopaminergic neurite outgrowth to the striatal cell region. Mesencephalic cells were paired-cultured with striatal cells for 10 days in the presence or absence of function-blocking peptides and antibodies. ** $p < 0.01$ and *** $p < 0.001$ vs. control (Mes/St) group.

laminin coating did not (Fig. 3d). A5-1 suppressed dopaminergic neurite outgrowth on fibronectin coating, but did not on collagen coating (Fig. 3e).

Knockdown of integrin α 5 in mesencephalic cells suppressed dopaminergic neurite outgrowth to the striatal cell region. Integrin α 5 β 1 was expressed in both mesencephalic and striatal cultures. To clarify the involvement of integrin α 5 β 1 expression on dopaminergic neurons in neurite outgrowth, we completed

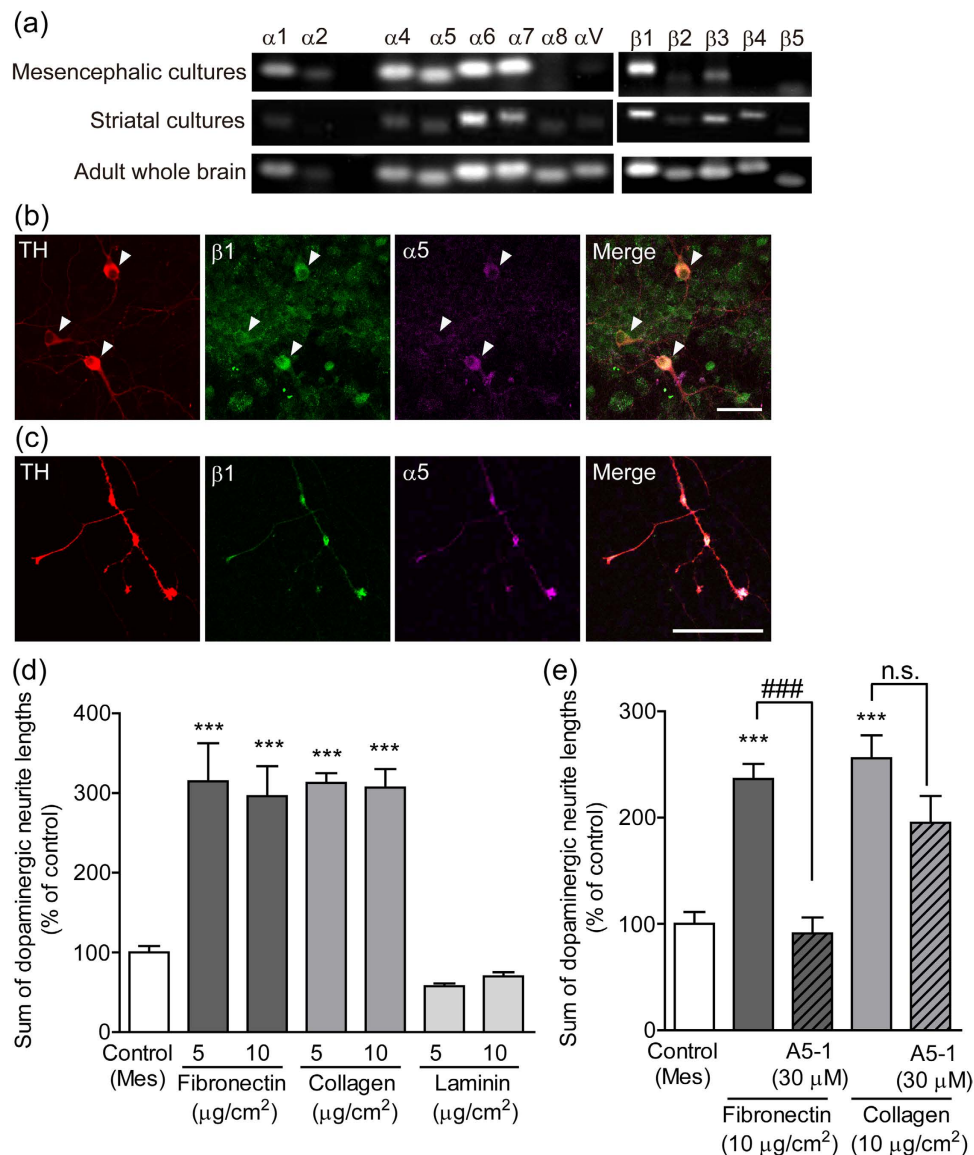


Figure 3. Participation of integrin $\alpha 5\beta 1$ in dopaminergic neurite outgrowth. (a) Expression of integrin mRNA in mesencephalic and striatal cultures. mRNA levels were analyzed using RT-PCR. (b and c) Expression of integrin $\alpha 5$ and $\beta 1$ on dopaminergic neurons. Representative photographs of dopaminergic soma (b) and neurites (c). Mesencephalic cells were cultured alone for 10 days and then processed for immunostaining of TH, integrin $\alpha 5$ and integrin $\beta 1$. Arrowheads indicate dopaminergic soma. Scale bars = 50 μm (b) and 25 μm (c). (d) Influence of the extracellular matrix on dopaminergic neurite outgrowth. The outside of the isolation wall was coated by fibronectin, collagen type I, or laminin (5 and 10 $\mu\text{g}/\text{cm}^2$). Mesencephalic cells were cultured alone for 10 days. (e) The effect of integrin $\alpha 5\beta 1$ blocking peptide on dopaminergic neurite outgrowth on the extracellular matrix. The outside of the isolation wall was coated by fibronectin or collagen type I (10 $\mu\text{g}/\text{cm}^2$). Mesencephalic cells alone were cultured in the presence or absence of A5-1 (30 μM) for 10 days. *** $p < 0.001$ vs. control (Mes) group. ### $p < 0.001$. n.s.: not significant.

a lentiviral vector-mediated gene knockdown in mesencephalic cells. The silencing lentiviral vector constructs expressed both shRNA and Venus, which was as a marker gene (Fig. 4a). To produce mesencephalic cell-specific knockdown, the lentiviral vectors were applied to the inside of the isolation wall containing mesencephalic cells. The isolation wall was removed the next day after the lentiviral vectors were washed out. After paired-cultivation with striatal cells for 5 days, Venus was preferentially expressed in mesencephalic cells (Fig. 4b). Integrin $\alpha 5$ shRNA selectively decreased the expression of endogenous integrin $\alpha 5$ in mesencephalic cells and had no detectable effect on the expression in striatal cells (Fig. 4c). After paired-cultivation with striatal cells for 10 days, immunocytochemistry was performed using anti-green fluorescent protein (GFP) (for Venus) and anti-TH antibodies. Both lentiviral vectors, which expressed either control shRNA or integrin $\alpha 5$ shRNA, infected approximately 70% of the dopaminergic neurons (Fig. 4d and e). There was no difference in dopaminergic cell viability between vectors (Fig. 4f). Figure 4g shows that distribution of dopaminergic growth cones from the borderline of the

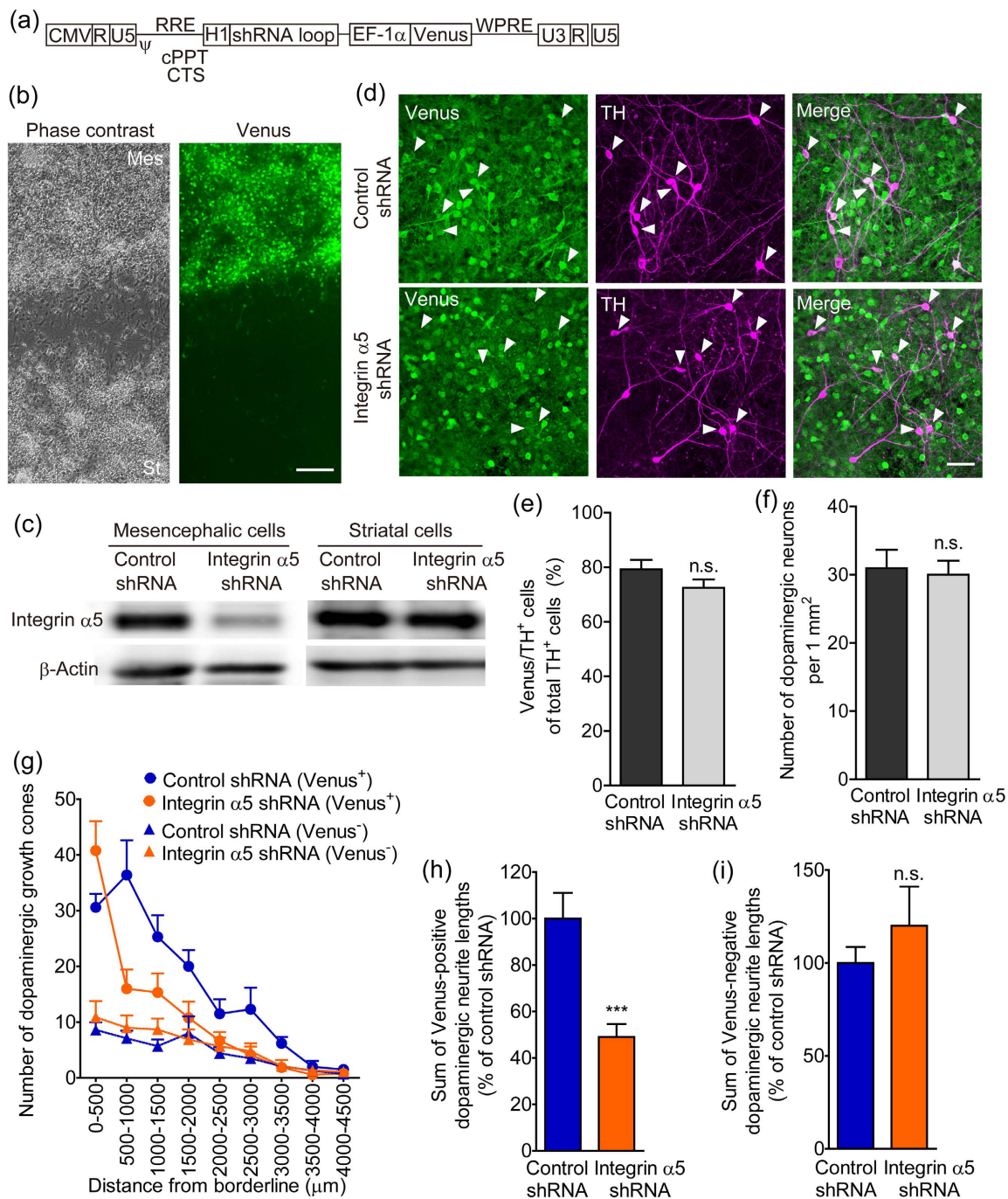


Figure 4. The effect of integrin $\alpha 5$ knockdown in mesencephalic cells on dopaminergic neurite outgrowth to the striatal cell region. (a) Structure of the lentiviral vector expressing shRNA and Venus under the control of the human H1 and human EF-1 α promoters, respectively. (b) Preferential infection of mesencephalic cells with lentiviral vectors. Lentiviral vectors were applied inside the isolation wall during 5 to 24 hours after cell plating. Mesencephalic cells were paired-cultured with striatal cells for 5 days. Representative photographs show the vicinity of the borderline between the cell regions. Left: phase-contrast image. Right: Venus fluorescence. Scale bar = 200 μ m. (c) Selective knockdown of integrin $\alpha 5$ in mesencephalic cells. Protein samples were separately collected from the mesencephalic and striatal cells of paired-cultures 6 days after infection with lentiviral vectors. β -Actin was used as a loading control. (d–f) The effects of lentiviral vectors on infection efficiency and cell density in dopaminergic neurons. After infection with lentiviral vectors, mesencephalic cells were paired-cultured with striatal cells for 10 days and then processed for immunostaining of Venus and TH. Arrowheads (d) indicate Venus-positive dopaminergic neurons. Scale bar = 50 μ m. $n = 20$. (g) Distribution of Venus-positive and Venus-negative dopaminergic growth cones from the borderline of the mesencephalic cell region. (h and i) The effect of integrin $\alpha 5$ shRNA infection in mesencephalic cells on dopaminergic neurite outgrowth to the striatal cell region. Venus-positive (h) and Venus-negative (i) dopaminergic neurite lengths were summed. *** $p < 0.001$ vs. control shRNA. n.s.: not significant.

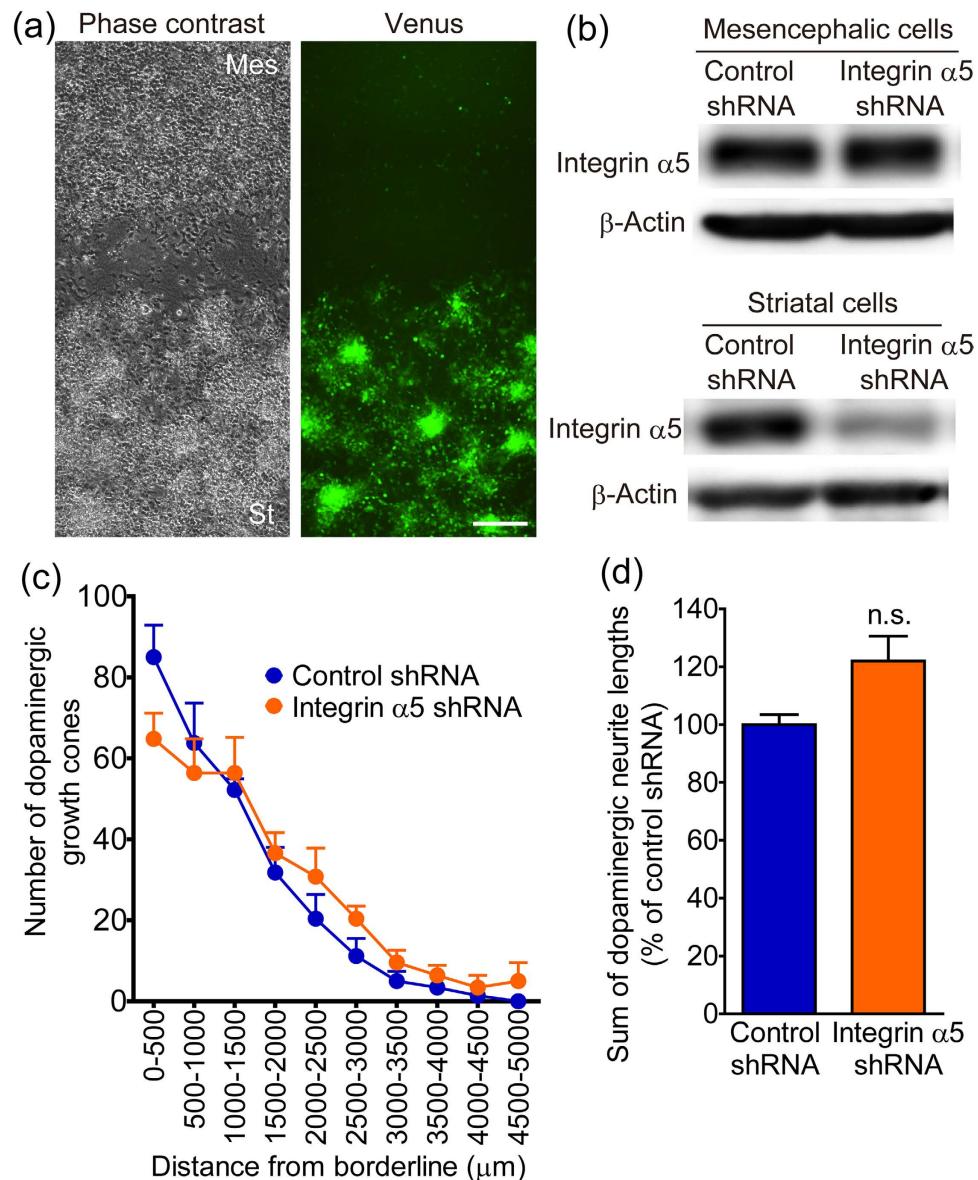


Figure 5. The effect of integrin $\alpha 5$ knockdown in striatal cells on dopaminergic neurite outgrowth to the striatal cell region. (a) Preferential infection of striatal cells with lentiviral vectors. Lentiviral vectors were applied outside the isolation wall during 5 to 24 hours after cell plating. Mesencephalic cells were paired-cultured with striatal cells for 5 days. Representative photographs show the vicinity of the borderline between the cell regions. Left: phase-contrast image. Right: Venus fluorescence. Scale bar = 200 μm . (b) Selective knockdown of integrin $\alpha 5$ in striatal cells. Protein samples were separately collected from the mesencephalic and striatal cells of paired-cultures 6 days after infection with lentiviral vectors. (c) Distribution of dopaminergic growth cones from the borderline of the mesencephalic cell region. (d) The effect integrin $\alpha 5$ shRNA infection in striatal cells with on dopaminergic neurite outgrowth to the striatal cell region. After infection with lentiviral vectors, mesencephalic cells were paired-cultured with striatal cells for 10 days and then processed for TH immunostaining. TH-positive dopaminergic neurite lengths were summed. n.s.: not significant.

mesencephalic cell region. In cultures transfected with integrin $\alpha 5$ shRNA, the number of Venus-positive dopaminergic growth cones was decreased away from the borderline. Thus, transfection of mesencephalic cells with integrin $\alpha 5$ shRNA significantly suppressed Venus-positive dopaminergic neurite outgrowth to the striatal cell region (Fig. 4h). There was no difference in the distribution of Venus-negative dopaminergic growth cones or the Venus-negative dopaminergic neurite outgrowth between control and integrin $\alpha 5$ shRNA (Fig. 4g and i).

Knockdown of integrin $\alpha 5$ in striatal cells did not affect dopaminergic neurite outgrowth to the striatal cell region. To eliminate the possibility that integrin $\alpha 5\beta 1$ expression in striatal cells is involved in dopaminergic neurite outgrowth, we selectively knock downed integrin $\alpha 5$ in striatal cells. The lentiviral vectors

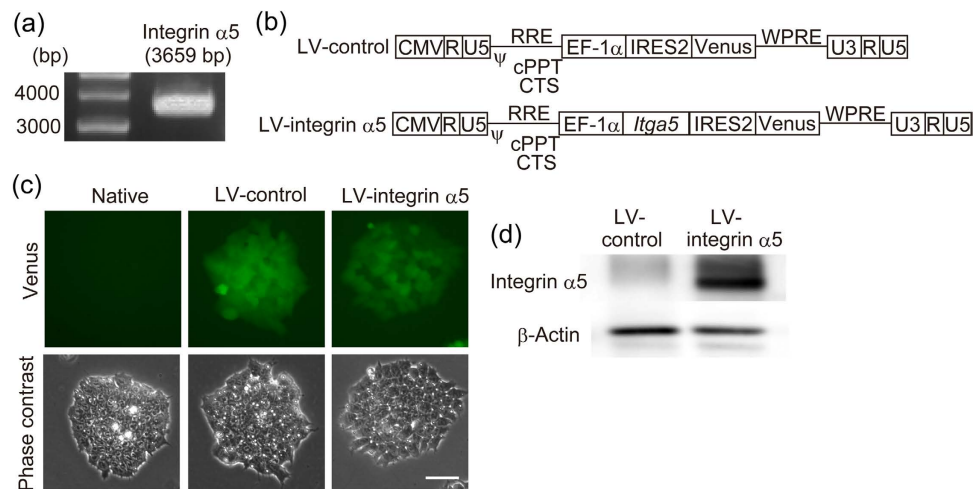


Figure 6. Transduction of integrin $\alpha 5$ in undifferentiated ES cells by lentiviral vectors. (a) Full-length mouse integrin $\alpha 5$ mRNA was isolated from whole brains. Integrin $\alpha 5$ cDNA was amplified with PCR using specific primers. (b) Structure of the lentiviral vector expressing integrin $\alpha 5$ and/or Venus under the control of the EF-1 α promoter. The integrin $\alpha 5$ gene (*Itga5*) was incorporated upstream of the internal ribosome entry site 2 (IRES2) region. The translation of Venus was initiated via IRES2. (c,d) Expression of Venus and integrin $\alpha 5$ in undifferentiated ES cells. Mouse ES cells were transfected with lentiviral vectors, and a fluorescent colony of ES cells was picked under the microscope to obtain a single clone. Scale bar = 50 μm .

were applied to the outside of the isolation wall containing striatal cells. After paired-cultivation with striatal cells for 5 days, Venus was preferentially expressed in striatal cells (Fig. 5a). Integrin $\alpha 5$ shRNA selectively decreased the expression of endogenous integrin $\alpha 5$ in striatal cells and had no detectable effect in mesencephalic cells (Fig. 5b). After paired-cultivation with striatal cells for 10 days, immunocytochemistry was performed using anti-TH antibodies. There was no difference in the distribution of dopaminergic growth cones or the dopaminergic neurite outgrowth between control and integrin $\alpha 5$ shRNA (Fig. 5c and d).

Overexpression of integrin $\alpha 5$ in ES cell-derived dopaminergic neurons enhanced dopaminergic neurite outgrowth on striatal cultures.

To confirm that integrin $\alpha 5\beta 1$ expression on dopaminergic neurons participates in the neurite outgrowth on striatal neurons, we produced integrin $\alpha 5$ -overexpressing dopaminergic neurons from mouse ES cells. Full-length mouse integrin $\alpha 5$ mRNA was isolated from the whole brain (Fig. 6a). cDNA was incorporated into a bicistronic IRES-Venus expression lentiviral vector (LV-integrin $\alpha 5$). The control vector (LV-control) consisted of the lentiviral backbone vector with the gene encoding Venus (Fig. 6b). Mouse ES cells were transfected with these lentiviral vectors and cloned. We confirmed that undifferentiated ES cells transfected with the vectors expressed Venus (Fig. 6c), LV-integrin $\alpha 5$ -transfected cells expressed integrin $\alpha 5$, and undifferentiated ES cells did not express endogenous integrin $\alpha 5$ (Fig. 6d). The cloned ES cells were differentiated with the stromal cell-derived inducing activity method (SDIA method), by which mesencephalic dopaminergic neurons are induced¹⁹. We confirmed that the mesencephalic dopaminergic neuron markers *Nurr1* and *Ptx3* were induced in differentiated ES cells (Fig. 7a). After differentiation, LV-integrin $\alpha 5$ -transfected cells expressed more integrin $\alpha 5$ than LV-control-transfected cells (Fig. 7b). Confocal microscopy showed that integrin $\alpha 5$ was expressed at the plasma membrane of dopaminergic neurons differentiated from LV-control-transfected ES cells (Fig. 7c). We confirmed that Venus expression in TH-positive neurons was maintained in both clones. Although more than 90% of colonies from LV-control-transfected cells were positive for neuron-specific β -III tubulin (TuJ1), more than 50% of colonies from LV-integrin $\alpha 5$ -transfected cells were negative for TuJ1 (Fig. 7d). Flow cytometry demonstrated that the proportion of TuJ1-positive cells to total ES cells was significantly decreased by transfection with LV-integrin $\alpha 5$ (Fig. 7e). Regardless of the inefficiency of neural differentiation, immunofluorescence double-staining demonstrated that the proportion of TH-positive cells to TuJ1-positive cells was similar between LV-control- and LV-integrin $\alpha 5$ -transfected cells (Fig. 7f). To examine the effect of integrin $\alpha 5$ overexpression on dopaminergic neurite outgrowth, ES cell-derived dopaminergic neurons were replated on striatal cultures. We measured the total neurite lengths of Venus-positive dopaminergic neurons, and overexpression of integrin $\alpha 5$ in dopaminergic neurons enhanced dopaminergic neurite outgrowth on striatal cultures (Fig. 7g). In addition, the difference between LV-control- and LV-integrin $\alpha 5$ -transfected groups in dopaminergic neurite outgrowth expanded over time (1–3 days) (Fig. 7h).

Discussion

In this study, we demonstrated that both pharmacological and genetic inhibition of integrin $\alpha 5\beta 1$ suppressed the dopaminergic neurite outgrowth on striatal neurons. Furthermore, we showed that overexpression of integrin $\alpha 5$ enhanced the neurite outgrowth of stem cell-derived dopaminergic neurons on striatal cells. These findings suggest that integrin $\alpha 5\beta 1$ expression on dopaminergic neurons plays an important role in the dopaminergic neurite outgrowth on striatal neurons.

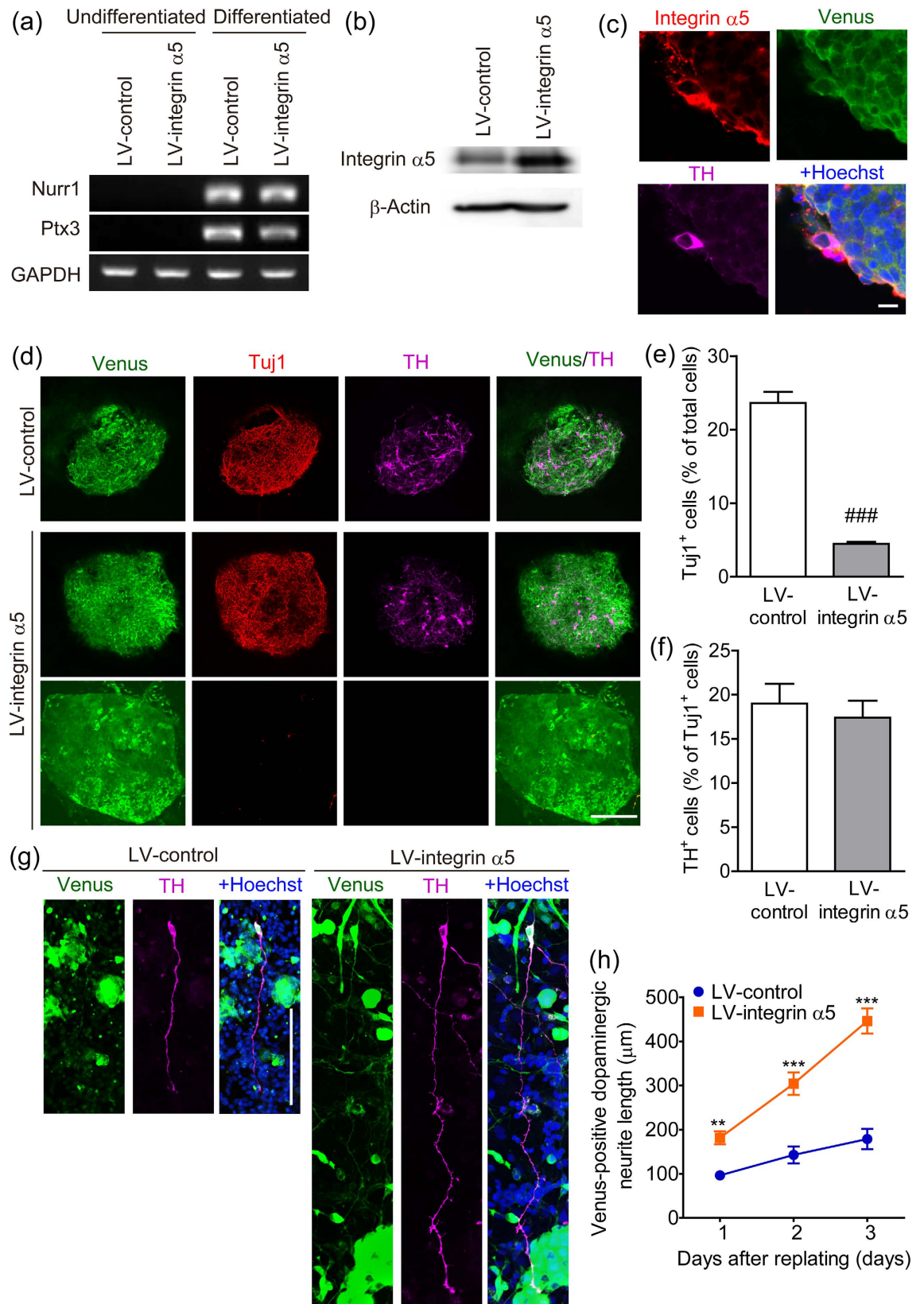


Figure 7. The effect of integrin $\alpha 5$ overexpression on the neurite outgrowth of ES cell-derived dopaminergic neurons on striatal cultures. (a) Expression of Nurr1 and Ptx3 mRNA during differentiation of ES cells. ES cells transfected with lentiviral vectors were differentiated with the SDIA method for 12 days. (b) Expression of integrin $\alpha 5$ in differentiated ES cells. ES cells transfected with lentiviral vectors were differentiated with the SDIA method for 14 days. (c) Integrin $\alpha 5$ expression in TH-positive cells differentiated from LV-control transfected ES cells. Scale bar = 10 μm . (d) Venus expression in TH-positive cells differentiated

from transfected ES cells. The lower images show a TuJ1-negative colony from LV-integrin $\alpha 5$ transfected cells. Scale bar = 200 μm . (e) The effect of integrin $\alpha 5$ overexpression on neural differentiation efficiency of ES cells. ES cell-derived colonies were detached from feeder cells after 14 days of differentiation and then dissociated into single cells. These cells were processed for Venus and β -III tubulin (TuJ1) immunostaining and analyzed by flow cytometry. (f) The effect of integrin $\alpha 5$ overexpression on dopaminergic differentiation efficiency of ES cells. (g and h) The effect of integrin $\alpha 5$ overexpression on the neurite length of ES cell-derived dopaminergic neurons. ES cell-derived colonies were detached from feeder cells after 13 days of differentiation and then dissociated into single cells. These cells were replated on striatal cultures and then processed for immunostaining after cultivation for the indicated times. Representative images (g) were obtained 2 days after cultivation on striatal cultures. Scale bar = 100 μm . $n = 10$ –18. $**p < 0.01$ and $***p < 0.001$ vs. LV-control.

Our previous report showed that in paired-cultivation conditions, dopaminergic axons prefer to extend to the striatal cell region rather than the spinal cell region¹⁰. Diffusible and/or membrane-bound factors derived from striatal cells enhance the maturation of dopaminergic neurons^{20,21}. In organotypic co-cultures of mesencephalic and striatal slices, the dopaminergic innervation of striatal slices is thought to result from adhesive interactions rather than from diffusible substances²². However, the axon-promoting factors involved in the dopaminergic neurite outgrowth on striatal neurons remain unknown. In paired-cultures with striatal cells, mesencephalic dopaminergic neurites extended along striatal neurons but not striatal astrocytes. This observation indicates that cell adhesion molecules between dopaminergic neurites and striatal neurons are important for the dopaminergic neurite outgrowth on striatal neurons. In contrast, CM derived from striatal cultures did not enhance dopaminergic neurite outgrowth, suggesting a small contribution of humoral factors to dopaminergic neurite outgrowth in our cultures. Because the concentration gradients of chemoattractants are important for the directional guidance of neurite outgrowth²³, the exchange for CM derived from striatal cultures may be insufficient for the outward extension of dopaminergic neurites from the mesencephalic cell region. Interestingly, GDNF, which enhanced the outward extension of dopaminergic neurites from the mesencephalic cell region in mesencephalic cells only cultures, had no effect in paired-cultures of mesencephalic and striatal cells. This finding suggests that the interaction with striatal cells and GDNF share the same signaling pathway to promote the extension of dopaminergic neurites. We did not detect GDNF in the CM derived from paired-cultures of mesencephalic and striatal cells (data not shown).

GDNF exert its biological effects via GDNF family receptor- $\alpha 1$ (GFR $\alpha 1$) and RET tyrosine kinase²⁴. In addition to RET, GFR $\alpha 1$ directly interacts with NCAM and integrin $\beta 1$ ¹². Notably, NCAM and integrin αV participate in GDNF-induced dopaminergic neurite outgrowth^{11,13}. Our pharmacological analysis revealed that integrin, rather than NCAM, participated in dopaminergic neurite outgrowth to the striatal cell region. Integrins are $\alpha\beta$ heterodimers, and to date, 8 β subunits have been reported to assemble with 18 α subunits to form 24 distinct integrins²⁵. Among them, the RGD-binding integrins ($\alpha 5\beta 1$, $\alpha 8\beta 1$, $\alpha V\beta 1$, $\alpha V\beta 3$, $\alpha V\beta 5$, $\alpha V\beta 6$, $\alpha V\beta 8$, and $\alpha IIb\beta 3$) share the ability to recognize ligands containing an RGD tripeptide active site. We also clarified the involvement of integrin $\alpha 5\beta 1$ in dopaminergic neurite outgrowth to the striatal cell region using specific pharmacological inhibitors. The dopaminergic neurites preferred to extend on a fibronectin matrix. These results suggest that integrin $\alpha 5\beta 1$ expression on dopaminergic neurons plays an important role in dopaminergic neurite outgrowth to the striatal cell region. However, the involvement of other integrins cannot be excluded because dopaminergic neurites also showed extension on a collagen matrix. In accordance with a previous report in which integrin $\alpha 5$ and $\beta 1$ mRNAs were expressed in the substantia nigra and the ventral tegmental area²⁶, we confirmed integrin $\alpha 5\beta 1$ mRNA expression in mesencephalic cultures and detected the expression of the corresponding proteins on almost all dopaminergic neurons. Our previous study¹⁰ reports that the percentage of dopaminergic neurons that express G-protein-activated inwardly rectifying potassium channel (GIRK)-2 and calbindin were 48% and 46%, respectively, in this cultures. Although mesencephalic dopaminergic neurons could be divided into three distinct nuclei such as A8, A9 and A10²⁷, expression of integrin $\alpha 5\beta 1$ on dopaminergic neurons seems to be not restricted to GIRK-2-positive A9 cells in the substantia nigra. These findings suggest that integrin $\alpha 5\beta 1$ expression on dopaminergic neurons does not necessarily participate in axonal guidance of the nigrostriatal dopaminergic projection.

Importantly, integrin $\alpha 5$ and $\beta 1$ mRNAs were also expressed in striatal cultures. To clarify the involvement of integrin $\alpha 5\beta 1$ expression on dopaminergic neurons, we selectively knock downed integrin $\alpha 5$ in mesencephalic and striatal cultures using a genetic-based approach. Integrin $\alpha 5$ assembles only with integrin $\beta 1$, whereas integrin $\beta 1$ assembles with integrin $\alpha 1$, 2, 3, 4, 5, 6, 7, 8, 9, 10, 11, V²⁵. That is why knockdown of integrin $\alpha 5$ is necessary and sufficient to suppress the function of integrin $\alpha 5\beta 1$. Knockdown of integrin $\alpha 5$ in dopaminergic neurons suppressed neurite outgrowth to the striatal cell region. The knockdown of integrin $\alpha 5$ in non-dopaminergic mesencephalic and striatal cells had no effect on neurite outgrowth. Therefore, we conclude that integrin $\alpha 5\beta 1$ expression on dopaminergic neurons plays an important role in neurite outgrowth to the striatal cell region.

To enhance the dopaminergic neurite outgrowth on striatal neurons, we attempted to overexpress integrin $\alpha 5$ in dopaminergic neurons. Because of the size of integrin $\alpha 5$ coding sequence, the lentiviral titer of integrin $\alpha 5$ -expressing vector was much lower than that of control vectors. The difference in viral titers made it difficult to equalize the infection efficiency in dopaminergic neurons of mesencephalic cultures. Therefore, we transduced mouse ES cells to stably express integrin $\alpha 5$ using lentiviral vectors. The elongation factor-1 α (EF-1 α) promoter was reported to be ineffective in TH-positive cells differentiated from ES cells²⁸. However, we showed that expression of transgenes under the control of the EF-1 α promoter, although reduced, was maintained in dopaminergic neurons derived from ES cells in some clones. However, when integrin $\alpha 5$ -overexpressing ES cells were differentiated with the SDIA method, a large number of TuJ1-negative colonies appeared, thus resulting in a reduction in neural differentiation efficiency. This effect may be due to the promotion of endodermal differentiation of ES cells

by integrin $\alpha 5\beta 1$ ^{29,30}. Regardless, we successfully prepared integrin $\alpha 5$ -overexpressing dopaminergic neurons differentiated from ES cells. Furthermore, we showed that overexpression of integrin $\alpha 5$ enhanced dopaminergic neurite outgrowth on striatal cells. In support of our finding that integrin $\alpha 5$ plays a role in neurite outgrowth, expression of integrin $\alpha 5$ in neuron-like cells conferred neurite outgrowth on fibronectin³¹. Myosin light chain kinase can function downstream of integrin activation via extracellular signal-regulated kinase³². It is proposed that retrograde actin flow driven by myosin, which is activated by myosin light chain kinase, participates in axonal elongation³³.

The ligands for integrin $\alpha 5\beta 1$ expressed on striatal neurons remain unknown. Dopaminergic axons originating from grafts run parallel to the neurites of striatal medium-sized spiny neurons, which are the target cells for dopaminergic innervation³⁴. This finding suggests the existence of specific adhesion molecules on striatal neurons for dopaminergic innervation. Recently, it was reported that integrin $\alpha 5$ is highly expressed in striatal neurons innervated by nigral dopaminergic neurons³⁵. However, integrins are known to form heterophilic interactions at cell-cell adhesions. Fibronectin, which is the most recognized ligand for integrin $\alpha 5\beta 1$, is mainly produced in astrocytes and fibroblasts³⁶. Fibronectin expression is increased by cytokines and injury³⁷. Moreover, the L1 cell adhesion molecule, a disintegrin and metalloproteinases-15 and -17 functionally interact with integrin $\alpha 5\beta 1$ ^{18,38,39}. Especially, L1 is reported to enhance dopaminergic neurite outgrowth in mesencephalic cultures⁴⁰. Further investigations are needed to elucidate the integrin $\alpha 5\beta 1$ ligands expressed on striatal neurons.

In summary, we showed that integrin $\alpha 5\beta 1$ expression on dopaminergic neurons plays a role in the dopaminergic neurite outgrowth on striatal neurons. The present study aids in the understanding of how axons extend to their target areas during development. In addition, our findings suggest that integrin $\alpha 5$ overexpression in dopaminergic neurons promote the neurite outgrowth on striatal neurons.

Materials and Methods

Materials. Human GDNF was purchased from Alomone Labs (Jerusalem, Israel). The neural cell adhesion molecule (NCAM) function-blocking antibody (AB5032) was purchased from Merck Millipore (Billerica, MA, USA). RGDS was purchased from Peptide Institute (Osaka, Japan). RGE8 was purchased from Abbiotec (San Diego, CA, USA). Cyclo(RGDfV) was obtained from ENZO Life Sciences (Farmingdale, NY, USA). ATN-161 (Ac-PHSCN-NH₂) and A5-1 (VILVLF) were synthesized by Medical & Biological Laboratories (Nagoya, Japan). The anti-integrin $\alpha 5$ function-blocking antibody (HMa5-1) was purchased from Santa Cruz (Dallas, TX, USA). The anti-integrin $\beta 1$ function-blocking antibody (Ha2/5), fibronectin (human), collagen I (rat), and laminin (mouse) were purchased from Becton-Dickinson (Franklin Lakes, NJ, USA).

Paired-cultivation of mesencephalic cells with striatal cells. Primary ventral mesencephalic and striatal cells were prepared from rat embryos on the 16th day of gestation. As previously described^{10,41}, mesencephalic cells were adjacently paired-cultured with striatal cells using a water-repellent isolation wall. Briefly, the isolation wall (1.0-mm thick) was placed on a polyethylenimine-coated coverslip in a 35-mm culture dish. The mesencephalic cell suspension (120 μ L) was plated inside the isolation wall (3.0×10^5 cells/cm²), and the striatal cell suspension (1.5 mL) was plated outside the isolation wall (3.0×10^5 cells/cm²). The isolation wall was removed 24 h after plating. Cultures were maintained in Eagle's minimum essential medium containing 10% fetal calf serum (1–4 days *in vitro*) or horse serum (5–12 days *in vitro*). Treatment with drugs was performed after removal of the isolation wall. Primary striatal astrocytes were prepared and enriched from rat embryos on the 16th day of gestation according to previously described procedures⁴². Cultures were incubated at 37 °C in an atmosphere of 5% CO₂ in air with 100% relative humidity. All animals were treated in accordance with the guidelines of the Kyoto University Animal Experimentation Committee and the Japanese Pharmacological Society. This study was approved by Kyoto University Animal Experimentation Committee.

Induction of neural differentiation of mouse embryonic stem (ES) cells. Undifferentiated mouse ES cells (EB5, kindly provided by Dr. Hitoshi Niwa, RIKEN Center for Developmental Biology; Kobe, Japan) were maintained on gelatin-coated dishes in Glasgow minimum essential medium supplemented with 1% fetal calf serum, 5% knockout serum replacement (Thermo Fisher Scientific, Waltham, MA, USA), 2 mM glutamine, 0.1 mM nonessential amino acids, 1 mM pyruvate, 0.1 mM 2-mercaptoethanol, and 2,000 U/ml leukemia inhibitory factor (Nacalai Tesque, Kyoto, Japan). EB5 cells carry the blasticidin S-resistance gene driven by the Oct3/4 promoter (active in the undifferentiated state) and were maintained in medium containing 20 μ g/ml blasticidin S to eliminate differentiated cells^{43,44}. Dopaminergic neurons were differentiated from mouse ES cells using the SDIA method as previously described¹⁹. Briefly, ES cells were co-cultured on PA6 stromal cells at a single-cell density in differentiation medium (Glasgow minimum essential medium supplemented with 10% knockout serum replacement, 2 mM glutamine, 0.1 mM nonessential amino acids, 1 mM pyruvate, and 0.1 mM 2-mercaptoethanol). For the replating of ES cell-derived cells on striatal cells, ES cell-derived colonies were detached from PA6 cells after 13 days of differentiation by incubation with collagenase type IV (Sigma-Aldrich, St. Louis, MO, USA) for 3 min at 37 °C. The detached colonies were isolated by spontaneous sedimentation, and gently triturated into single cells in the presence of Dispase (Thermo Fisher Scientific). ES cell-derived cells were replated on striatal cultures in the differentiation medium.

Immunocytochemistry. Immunocytochemistry was performed as previously described¹⁰. Following fixation with 4% paraformaldehyde, cells were sequentially incubated with 0.2–0.5% Triton X-100, primary antibodies, and secondary antibodies. For diaminobenzidine staining, cells were incubated with the avidin–biotinylated horseradish peroxidase complex (Vector Laboratories, Burlingame, CA, USA) and reacted with a diaminobenzidine solution (Dojindo Laboratories, Kumamoto, Japan). For nuclear staining, cells were incubated with Hoechst 33258 (100 μ g/mL). The following antibodies were commercially obtained: anti-TH from Merck Millipore,

Gene name	Amplicon size (bp)	Primer sequences
Integrin α 1	115	5'-ATGCCTTGCGTGAAGTTGG-3'
		5'-GAAATCCTCCATTCGGGTTG-3'
Integrin α 2	101	5'-TTGCTGTTGGCTATGGTTGC-3'
		5'-TCTGTGGTCTCGTCCGTCTC-3'
Integrin α 4	112	5'-CGAGTTTCAAGCAGTGGAGAG-3'
		5'-GATGCCCAAGGTGGTATGTG-3'
Integrin α 5	99	5'-GCTGCATTCCGAGTCTGG-3'
		5'-TAGGGCATCTCAGGGCTTC-3'
Integrin α 6	120	5'-GAGCTCCCTATGACGATCTGG-3'
		5'-CAGCGATTGAGTAGCCGAAG-3'
Integrin α 7	127	5'-CAGGCAGATGGGGATGATG-3'
		5'-AGGCATTCTCGTTGGACAGG-3'
Integrin α 8	104	5'-AGGCCAGAGCATTCAAATACAG-3'
		5'-GGTGGTTGTGGAGGAAGAGG-3'
Integrin α V	119	5'-TTAAGACGCCGAAAAGAATG-3'
		5'-AGCAGTTCACAGCCCAAAG-3'
Integrin β 1	139	5'-GACCTGCCTTGGTGTCTGTG-3'
		5'-GGGCAACTTCTCCCTGCTTT-3'
Integrin β 2	118	5'-TGGTGAGAAGCAGGCAGAGA-3'
		5'-TACCTCAGGGAGGGATGTGG-3'
Integrin β 3	123	5'-GGACGAAAACGCTTACAACATC-3'
		5'-ACCAGGAGGAGGACCAATC-3'
Integrin β 4	145	5'-AACTGCAAGGAGAACGCATC-3'
		5'-AGGCAGACTCGGTGGAGAAC-3'
Integrin β 5	95	5'-TTCCCAACTGTGTCCCTTC-3'
		5'-ACCCTCTGCTTCTCACTTCC-3'
Nurr1	253	5'-TGAAGAGAGCGGACAAGGAGATC-3'
		5'-TCTGGAGTTAAGAAATCGGAGCTG-3'
Ptx3	373	5'-AGGACGGCTCTCTGAAGAA-3'
		5'-TTGACCGAGTTGAAGGCGAA-3'
GAPDH	452	5'-ACCACAGTCCATGCCATCAC-3'
		5'-TCCACCACCTGTGCTGTA-3'

Table 1. Primer sets used in PCR analysis for mRNA expression.

anti-MAP2 from Sigma-Aldrich, anti-pNF (SMI 31) and anti-neuronal class III β -tubulin (Tuj1) from Covance (Princeton, NJ, USA), anti-GFP from Nacalai Tesque, anti-GFAP from Merck Millipore, anti-integrin α 5 (HMA5-1) and anti-integrin β 1 (N-20) from Santa Cruz. Images of living or immunostained cells were obtained using an IX81 inverted research microscope (Olympus, Tokyo, Japan), a BZ-8100 fluorescence microscope (Keyence, Osaka, Japan), and an A1RMP multiphoton confocal microscope (Nikon, Tokyo, Japan). The fluorescence of immunostained cells was analyzed on a BD FACSAria III cell sorter (Becton-Dickinson).

Measurement of dopaminergic neurite length. To measure dopaminergic neurite length in the paired-cultures of mesencephalic and striatal cells, cultures were processed for TH immunostaining. As previously described¹⁰, the borderline of the mesencephalic cell region was defined as the position of the most laterally located TH-positive dopaminergic soma. The distance from TH-positive dopaminergic growth cones to the borderline was measured and defined as the neurite length. The sum of all dopaminergic neurite lengths in a width of 890 μ m was calculated. To produce a continuous image, several photographs were merged using a BZ Analyzer (Keyence). There were four subjects for each experiment.

The measurements of neurite length of ES-derived dopaminergic neurons were completed using Image J software (National Institutes of Health, Bethesda, MD, USA) with the NeuronJ plug-in.

RT-PCR. Total RNA was isolated using a High Pure RNA Isolation Kit (Roche, Basel, Switzerland) according to the manufacturer's instructions. Total RNA was reverse-transcribed using oligo (dT) primers and RT-PCR was performed using a PrimeScript RT-PCR Kit (Takara Bio, Shiga, Japan) according to the manufacturer's instructions. Table 1 shows the primer sets used for amplification. The PCR conditions included 30 cycles of 30 s at 94 °C, 30 s at 60 °C, and 30 s at 72 °C.

Generation of lentiviral vectors and *in vitro* transduction. Plasmids, which were required to generate the third-generation self-inactivated human immunodeficiency virus-1-based lentiviral vectors, were kindly provided by Dr. Hiroyuki Miyoshi (RIKEN BioResource Center). Integrin α 5 shRNA was prepared by

annealing 67 base pair sense and antisense oligos that contained a 19-base stem from the rat integrin $\alpha 5$ sequence (5'-CACTAGCCAACCAGGAGTA-3')⁴⁵ and a 15-base loop (5'-ACGTGTGCTGTCCGT-3'). Control shRNA contained a non-targeting stem (5'-ACGTGACACGTTCCGGAGAA-3'). The annealed oligos were subcloned into pENTER-H1 at the BglIII and XbaI sites, and were recombined into CS-Rfa-EVb5d using Gateway LR Clonase II (Thermo Fisher Scientific). Mouse integrin $\alpha 5$ cDNA was amplified by PCR from mouse whole brain cDNA, and the coding region was verified by DNA sequencing. The cDNA was subcloned into CSII-EF-Rfa-IRES2-Venus by replacing the Rfa Gateway cassette. The vector contains an EF-1 α promoter and an internal ribosomal entry site 2 (IRES2) followed by Venus, which is a variant of yellow fluorescent protein⁴⁶. The lentiviral vectors expressing Venus only or integrin $\alpha 5$ followed by Venus were generated by transient cotransfection of HEK293T cells with CSII-EF-IRES2-Venus or CSII-EF-Itga5-IRES2-Venus, respectively, the packaging construct (pCAG-HIVgp), and the envelop- and Rev-expressing construct (pCMV-VSV-G-RSV-Rev). Two days after transfection, the vector-containing supernatant was collected, filtered through a 0.22- μ m-pore-size filter, and concentrated by centrifugation at 50,000 g for 2 hours at 20°C. The virus pellet was resuspended in culture medium and stored at -80°C until use. For the enhancement of lentiviral infection, polybrene (8 μ g/mL) was added to the lentiviral vector-containing medium.

Western blot analysis. The Western blot analysis was conducted as previously described⁴⁷, except that the detection of integrin $\alpha 5$ was performed under non-reducing conditions. The following antibodies were commercially obtained: anti-integrin $\alpha 5$ (AB1928) from Merck Millipore and anti- β -actin (AC-15) from Sigma-Aldrich.

Statistics. The statistical significance of the differences between three or more groups was analyzed with a one-way analysis of variance (ANOVA) followed by post-hoc multiple comparisons using the Turkey's test. Statistical significance was defined as $p < 0.05$. Data are expressed as the mean \pm standard error of the mean (SEM).

References

- Piccini, P. *et al.* Dopamine release from nigral transplants visualized *in vivo* in a Parkinson's patient. *Nat. Neurosci.* **2**, 1137–1140 (1999).
- Freed, C. R. *et al.* Transplantation of embryonic dopamine neurons for severe Parkinson's disease. *N. Engl. J. Med.* **344**, 710–719 (2001).
- Olanow, C. W. *et al.* A double-blind controlled trial of bilateral fetal nigral transplantation in Parkinson's disease. *Ann. Neurol.* **54**, 403–414 (2003).
- Hernández-Montiel, H. L., Tamariz, E., Sandoval-Minero, M. T. & Varela-Echavarría, A. Semaphorins 3A, 3C, and 3F in mesencephalic dopaminergic axon pathfinding. *J. Comp. Neurol.* **506**, 387–397 (2008).
- Yamauchi, K. *et al.* FGF8 signaling regulates growth of midbrain dopaminergic axons by inducing semaphorin 3F. *J. Neurosci.* **29**, 4044–4055 (2009).
- Fenstermaker, A. G. *et al.* Wnt/planar cell polarity signaling controls the anterior-posterior organization of monoaminergic axons in the brainstem. *J. Neurosci.* **30**, 16053–16064 (2010).
- Blakely, B. D. *et al.* Wnt5a regulates midbrain dopaminergic axon growth and guidance. *PLoS One* **31**, e18373 (2011).
- Deschamps, C., Faideau, M., Jaber, M., Gaillard, A. & Prestoz, L. Expression of ephrinA5 during development and potential involvement in the guidance of the mesostriatal pathway. *Exp. Neurol.* **219**, 466–480 (2009).
- Charvet, I., Hemming, F. J., Feuerstein, C. & Saxod, R. Mosaic distribution of chondroitin and keratan sulphate in the developing rat striatum: possible involvement of proteoglycans in the organization of the nigrostriatal system. *Brain Res. Dev. Brain Res.* **109**, 229–244 (1998).
- Wakita, S. *et al.* Reconstruction and quantitative evaluation of dopaminergic innervation of striatal neurons in dissociated primary cultures. *J. Neurosci. Methods* **192**, 83–89 (2010).
- Chao, C. C., Ma, Y. L., Chu, K. Y. & Lee, E. H. Integrin α 5 and NCAM mediate the effects of GDNF on DA neuron survival, outgrowth, DA turnover and motor activity in rats. *Neurobiol. Aging* **24**, 105–116 (2003).
- Cao, J. P. *et al.* Integrin β 1 is involved in the signaling of glial cell line-derived neurotrophic factor. *J. Comp. Neurol.* **509**, 203–210 (2008).
- Cao, J. P. *et al.* Involvement of NCAM in the effects of GDNF on the neurite outgrowth in the dopamine neurons. *Neurosci. Res.* **61**, 390–397 (2008).
- Khalili, P. *et al.* A non-RGD-based integrin binding peptide (ATN-161) blocks breast cancer growth and metastasis *in vivo*. *Mol. Cancer Ther.* **5**, 2271–2280 (2006).
- Dechantsreiter, M. A. *et al.* N-Methylated cyclic RGD peptides as highly active and selective α (V) β (3) integrin antagonists. *J. Med. Chem.* **42**, 3033–3040 (1999).
- Kim, E. Y., Bang, J. Y., Chang, S. I. & Kang, I. C. A novel integrin $\alpha 5\beta 1$ antagonistic peptide, A5-1, screened by Protein Chip system as a potent angiogenesis inhibitor. *Biochem. Biophys. Res. Commun.* **377**, 1288–1293 (2008).
- Mendrick, D. L. & Kelly, D. M. Temporal expression of VLA-2 and modulation of its ligand specificity by rat glomerular epithelial cells *in vitro*. *Lab. Invest.* **69**, 690–702 (1993).
- Ruppert, M., Aigner, S., Hubbe, M., Yagita, H. & Altevogt, P. The L1 adhesion molecule is a cellular ligand for VLA-5. *J. Cell Biol.* **131**, 1881–1891 (1995).
- Kawasaki, H. *et al.* Induction of Midbrain Dopaminergic Neurons from ES Cells by Stromal Cell-Derived Inducing Activity. *Neuron* **28**, 31–40 (2000).
- Prochiantz, A., Daguet, M. C., Herbet, A. & Glowinski, J. Specific stimulation of *in vitro* maturation of mesencephalic dopaminergic neurones by striatal membranes. *Nature* **293**, 570–572 (1981).
- Tomozawa, Y. & Appel, S. H. Soluble striatal extracts enhance development of mesencephalic dopaminergic neurons *in vitro*. *Brain Res.* **399**, 111–124 (1986).
- Becq, H., Bosler, O., Geffard, M., Enjalbert, A. & Herman, J. P. Anatomical and functional reconstruction of the nigrostriatal system *in vitro*: selective innervation of the striatum by dopaminergic neurons. *J. Neurosci. Res.* **58**, 553–566 (1999).
- Kapur, T. A. & Shoichet, M. S. Immobilized concentration gradients of nerve growth factor guide neurite outgrowth. *J. Biomed. Mater. Res. A.* **68**, 235–243 (2004).
- Treanor, J. J. *et al.* Characterization of a multicomponent receptor for GDNF. *Nature* **382**, 80–83.24 (1996).
- Hynes, R. O. Integrins: bidirectional, allosteric signaling machines. *Cell* **110**, 673–687 (2002).

26. Pinkstaff, J. K., Detterich, J., Lynch, G. & Gall, C. Integrin subunit gene expression is regionally differentiated in adult brain. *J. Neurosci.* **19**, 1541–1556 (1999).
27. Arenas, E., Denham, M. & Villaescusa, J. C. How to make a midbrain dopaminergic neuron. *Development* **142**, 1918–1936 (2015).
28. Zeng, X. *et al.* Stable expression of hrGFP by mouse embryonic stem cells: promoter activity in the undifferentiated state and during dopaminergic neural differentiation. *Stem Cells* **21**, 647–653 (2003).
29. Liu, Y., Wang, X., Kaufman, D. S. & Shen, W. A synthetic substrate to support early mesodermal differentiation of human embryonic stem cells. *Biomaterials* **32**, 8058–8066 (2011).
30. Brafman, D. A., Phung, C., Kumar, N. & Willert, K. Regulation of endodermal differentiation of human embryonic stem cells through integrin-ECM interactions. *Cell Death Differ.* **20**, 369–381 (2013).
31. Meland, M. N., Herndon, M. E. & Stipp, C. S. Expression of alpha5 integrin rescues fibronectin responsiveness in NT2N CNS neuronal cells. *J. Neurosci. Res.* **88**, 222–232 (2010).
32. Nguyen, D. H. *et al.* Myosin light chain kinase functions downstream of Ras/ERK to promote migration of urokinase-type plasminogen activator-stimulated cells in an integrin-selective manner. *J. Cell Biol.* **146**, 149–164 (1999).
33. Tanaka, E. & Sabry, J. Making the connection: cytoskeletal rearrangements during growth cone guidance. *Cell* **83**, 171–176 (1995).
34. Thompson, L. H., Grealish, S., Kirik, D. & Björklund, A. Reconstruction of the nigrostriatal dopamine pathway in the adult mouse brain. *Eur. J. Neurosci.* **30**, 625–638 (2009).
35. Nishimura, K. *et al.* Estradiol Facilitates Functional Integration of iPSC-Derived Dopaminergic Neurons into Striatal Neuronal Circuits via Activation of Integrin $\alpha 5\beta 1$. *Stem Cell Reports* **6**, 511–524 (2016).
36. Liesi, P., Kirkwood, T. & Vaheri, A. Fibronectin is expressed by astrocytes cultured from embryonic and early postnatal rat brain. *Exp. Cell Res.* **163**, 175–185 (1986).
37. Gris, P., Tighe, A., Levin, D., Sharma, R. & Brown, A. Transcriptional regulation of scar gene expression in primary astrocytes. *Glia* **55**, 1145–1155 (2007).
38. Nath, D. *et al.* Interaction of metargidin (ADAM-15) with $\alpha v\beta 3$ and $\alpha 5\beta 1$ integrins on different haemopoietic cells. *J. Cell Sci.* **112**, 579–587 (1999).
39. Bax, D. V. *et al.* Integrin $\alpha 5\beta 1$ and ADAM-17 interact *in vitro* and co-localize in migrating HeLa cells. *J. Biol. Chem.* **279**, 22377–22386 (2004).
40. Poltorak, M., Shimoda, K. & Freed, W. J. L1 substrate enhances outgrowth of tyrosine hydroxylase-immunoreactive neurites in mesencephalic cell culture. *Exp. Neurol.* **117**, 176–184 (1992).
41. Wakita, S. *et al.* Staurosporine induces dopaminergic neurite outgrowth through AMP-activated protein kinase/mammalian target of rapamycin signaling pathway. *Neuropharmacology* **77**, 39–48 (2014).
42. Unemura, K., Kume, T., Kondo, M., Maeda, Y., Izumi, Y. & Akaike, A. Glucocorticoids decrease astrocyte numbers by reducing glucocorticoid receptor expression *in vitro* and *in vivo*. *J. Pharmacol. Sci.* **119**, 30–39 (2012).
43. Niwa, H., Masui, S., Chambers, I., Smith, A. G. & Miyazaki, J. Phenotypic complementation establishes requirements for specific POU domain and generic transactivation function of Oct-3/4 in embryonic stem cells. *Mol. Cell Biol.* **22**, 1526–1536 (2002).
44. Ogawa, K., Matsui, H., Ohtsuka, S. & Niwa, H. A novel mechanism for regulating clonal propagation of mouse ES cells. *Genes Cells* **9**, 471–477 (2004).
45. Webb, D. J., Zhang, H., Majumdar, D. & Horwitz, A. F. alpha5 integrin signaling regulates the formation of spines and synapses in hippocampal neurons. *J. Biol. Chem.* **282**, 6929–6935 (2007).
46. Nagai, T., Ibata, K., Park, E. S., Kubota, M., Mikoshiba, K. & Miyawaki, A. A variant of yellow fluorescent protein with fast and efficient maturation for cell-biological applications. *Nat. Biotechnol.* **20**, 87–90 (2002).
47. Izumi, Y. *et al.* Compensatory role of the Nrf2-ARE pathway against paraquat toxicity: Relevance of 26S proteasome activity. *J. Pharmacol. Sci.* **129**, 150–159 (2015).

Acknowledgements

This work was supported by JSPS KAKENHI Grant Number 25460095 and 16K08267, by Novartis Research Grants, and by a grant from the Smoking Research Foundation, Japan. Lentiviral vectors were kindly provided from Dr. Hiroyuki Miyoshi (RIKEN BioResource Center). We thank Dr. Atsushi Miyawaki (RIKEN Brain Science Institute) for the Venus gene incorporated into lentivirus vectors. We thank Kanami Adachi for technical assistance.

Author Contributions

Y.I. designed research; Y.I., S.W., C.K. and T.N. performed research; Y.I., S.W., C.K., T.N., A.A. and T.K. analyzed data; Y.I. wrote the paper.

Additional Information

Competing financial interests: The authors declare no competing financial interests.

How to cite this article: Izumi, Y. *et al.* Integrin $\alpha 5\beta 1$ expression on dopaminergic neurons is involved in dopaminergic neurite outgrowth on striatal neurons. *Sci. Rep.* **7**, 42111; doi: 10.1038/srep42111 (2017).

Publisher's note: Springer Nature remains neutral with regard to jurisdictional claims in published maps and institutional affiliations.



This work is licensed under a Creative Commons Attribution 4.0 International License. The images or other third party material in this article are included in the article's Creative Commons license, unless indicated otherwise in the credit line; if the material is not included under the Creative Commons license, users will need to obtain permission from the license holder to reproduce the material. To view a copy of this license, visit <http://creativecommons.org/licenses/by/4.0/>

© The Author(s) 2017