

SCIENTIFIC REPORTS

OPEN

Photodeposited Pd Nanoparticles with Disordered Structure for Phenylacetylene Semihydrogenation

Received: 11 July 2016
Accepted: 06 January 2017
Published: 08 February 2017

Qining Fan, Sha He, Lin Hao, Xin Liu, Yue Zhu, Sailong Xu & Fazhi Zhang

Developing effective heterogeneous metal catalysts with high selectivity and satisfactory activity for chemoselective hydrogenation of alkyne to alkene is of great importance in the chemical industry. Herein, we report our efforts to fabricate TiO₂-supported Pd catalysts by a photodeposition method at room temperature for phenylacetylene semihydrogenation to styrene. The resulting Pd/TiO₂ catalyst, possessing smaller Pd ensembles with ambiguous lattice fringes and more low coordination Pd sites, exhibits higher styrene selectivity compared to two contrastive Pd/TiO₂ samples with larger ensembles and well-organized crystal structure fabricated by deposition-precipitation or photodeposition with subsequent thermal treatment at 300 °C. The sample derived from photodeposition exhibits greatly slow styrene hydrogenation in kinetic evaluation because the disordered structure of Pd particles in photodeposited Pd/TiO₂ may prevent the formation of β-hydride phases and probably produce more surface H atoms, which may favor high styrene selectivity.

The chemoselective hydrogenation of alkyne, a hydrocarbon with a carbon-carbon triple bond, is of fundamental importance for the production of fine chemicals and industrial polymerization processes^{1–3}. For instance, the removal of phenylacetylene from styrene feeds is crucial in the olefin industry as phenylacetylene acts not only as a kind of impurities in the styrene feed, but also a poison for subsequent polymerization of the styrene. Due to the strict standard for the styrene monomer purity for synthesis of polystyrene, the level of phenylacetylene should be reduced to <10 ppm. The alkyne can be hydrogenated partially to the alkene or fully to the alkane. The most widely used method to remove phenylacetylene is to convert it to styrene through the catalytic semihydrogenation which gives rise to the double benefit of lowering the concentration of phenylacetylene while increasing the production of the desired styrene^{4–7}, in which palladium-based catalysts have received considerable attention owing to their good hydrogenation selectivity toward styrene^{7,8}. Significant efforts have been devoted to development of novel strategies for the fabrication of highly selective Pd-based catalysts for alkyne hydrogenation. For example, selective deposition of metals/metal oxides, such as Cu⁹, Ag¹⁰, Si¹¹, and TiO₂^{12,13} on the surface of Pd particles promotes the catalytic selectivity *via* geometric and/or electronic effects; Formation of Pd-Cu single atom alloys catalysts enhances the alkene selectivity by tuning the chemical and adsorption properties^{14,15}; Adopting of Pd-Ga intermetallic compounds with isolation of active Pd sites in the crystallographic structure can obviously improve the hydrogenation selectivity^{16,17}; Carbon deposited on top Pd layers strongly affects the transport of hydrogen and disturbs the equilibrium of H between surfaces and deeper layers, leading to improved alkene selectivity¹⁸. Despite these encouraging results, the demand for efficient Pd catalysts with high selectivity to avoid the total hydrogenation of alkyne to alkane still remains.

Various studies have shown that the structure and surface characteristics of Pd metal play important roles in the selective hydrogenation of alkyne to alkene^{7,8}. Unselective hydrogenation to alkane proceeds on hydrogen-saturated β-hydride (subsurface H strongly coordinates with the Pd atoms in crystal lattices), thus the population of subsurface sites of Pd (the few layers below the surface) had been proposed to govern the hydrogenation events on the metal surface^{18,19}. Based on temperature-programmed desorption experiments, Khan *et al.*²⁰ demonstrated that subsurface H in Pd metal strongly enhances total hydrogenation of acetylene, whereas surface H alone (without any subsurface populations) is much more selective toward ethylene. Thus hindering the

State Key Laboratory of Chemical Resource Engineering, Beijing University of Chemical Technology, Beijing 100029, China. Correspondence and requests for materials should be addressed to F.Z. (email: zhangfz@mail.buct.edu.cn)

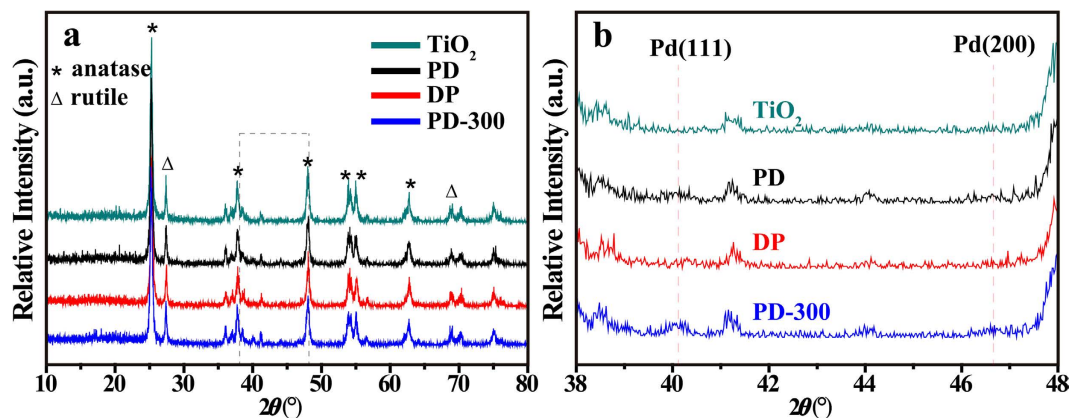


Figure 1. XRD patterns of samples of the TiO_2 support, PD, DP, and PD-300 sample (a). (b) shows the magnifying XRD patterns from 2θ 38 to 48° .

participation of subsurface H in the catalytic hydrogenation process by reducing generation of β -hydride phases apparently favors the partial hydrogenation. Herein, the TiO_2 -supported Pd catalyst with unique structural and morphological features of Pd metal particles was fabricated by a photodeposition method to obtain high hydrogenation selectivity of alkyne. The principle of the photodeposition method is that the irradiation of semiconductor substrates with UV light can result in the photoinduced electrons that could reduce the absorbed metal ions to form metal nanoparticles^{21–24}. Several groups^{25–29} have made great efforts to investigate the formation mechanism of metal particles on TiO_2 during photodeposition. From these investigations, it can be revealed that the group VIII noble metals (such as Rh and Pt) can strongly interact with, and are modified by their interaction with, the TiO_2 support. The procedures of calcination and reduction are omitted for the photodeposition of metal nanoparticles, and the synthesis condition is relatively milder. Therefore, the intrinsic surface structure and electronic properties of the as-synthesized metal catalysts can be sustained for the catalytic reaction. The metal-modified semiconductor samples prepared by this method were often used as photocatalysts showing higher photocatalytic activity than that prepared by other conventional methods. A very recently published contribution reported the synthesizing atomically dispersed Pd catalysts on ultrathin TiO_2 nanosheets by this photodeposition method, which are active for hydrogenation of $\text{C}=\text{C}$ and $\text{C}=\text{O}$ ³⁰.

In this manuscript, Pd metal nanoparticles were photodeposited on a commercial TiO_2 support. For comparison, the conventional deposition-precipitation method was used to prepare Pd/ TiO_2 catalysts. The effects of thermal treatment on the structural and morphological characteristics of the photodeposited Pd/ TiO_2 were also investigated. The resulting Pd/ TiO_2 samples were characterized by X-ray diffraction (XRD), inductively coupled plasma emission spectrometry (ICP-ES), *in situ* Fourier transformed infrared (FTIR) spectroscopy, high-resolution transmission electron microscopy (HRTEM), spherical aberration-corrected scanning transmission electron microscopy with high-angle annular dark-field detector (Cs-corrected STEM-HAADF), X-ray photoelectron spectroscopy (XPS), and temperature programmed reduction of hydrogen (H_2 -TPR). In addition, we investigated the catalytic performance of Pd/ TiO_2 samples for selective hydrogenation by using phenylacetylene as a probe molecule. The photodeposited Pd/ TiO_2 sample with smaller Pd ensembles and more low coordination Pd sites exhibits enhanced styrene selectivity. Our results indicate that photodeposition may provide an alternative to preparation of supported Pd catalysts for achieving high alkene selectivity by controlling morphology and structure of metal nanoparticles.

Results and Discussion

XRD patterns of three Pd/ TiO_2 samples (PD, DP, and PD-300 prepared by photodeposition, deposition-precipitation and photodeposition with further thermal treatment at 300°C in N_2 , respectively) and the TiO_2 support are shown in Fig. 1. For the support sample, diffraction peaks with 25.2 , 37.9 , 48.6 , 54.1 , 55.3 and 62.7° are assigned to the (101), (004), (002), (105), (211) and (204) reflections of the anatase phase, while those of 27.4 and 68.7° are ascribed to the (110) and (301) reflections of the rutile phase³¹. Many researchers reported that if the particle size of Pd metal smaller than 4–5 nm, it is hard to discern the peaks of Pd (111) and (200) diffraction^{32,33}. As shown in Fig. 1a, XRD patterns of PD, DP and PD-300 samples are similar to the TiO_2 support and no characteristic diffraction for Pd can be identified, suggesting very small particle sizes (smaller than 5 nm) in these samples. The Fig. 1b shows that two new peaks with extremely weak intensity appear at 40.1 and 46.7° which correspond to the (111) and (200) planes of Pd (JCPDS 46–1043) indicating the presence of Pd metal species. Elemental analyses performed by using an ICP-ES measurement reveal that three Pd/ TiO_2 samples have the actual Pd loadings of about 1.0 wt%, which is in good agreement with the nominal values.

The HRTEM technique was used to observe the dispersion and morphology of Pd nanoparticles on the TiO_2 support. For the PD sample, Pd nanoparticles are homogeneously distributed on the whole surface of the TiO_2 support (Fig. 2a), with a narrow particle size distribution of 1–2 nm (Fig. 2b). Fig. 2c and d show the representative HRTEM images of some individual Pd nanoparticles. It is obvious that Pd nanoparticles lay prone on the TiO_2 surface. The contact angle (CA) between the surface of the Pd nanoparticle and the outline of the metal-support interface is almost 65° , demonstrating the Pd nanoparticle has flattened sphere-like morphology.

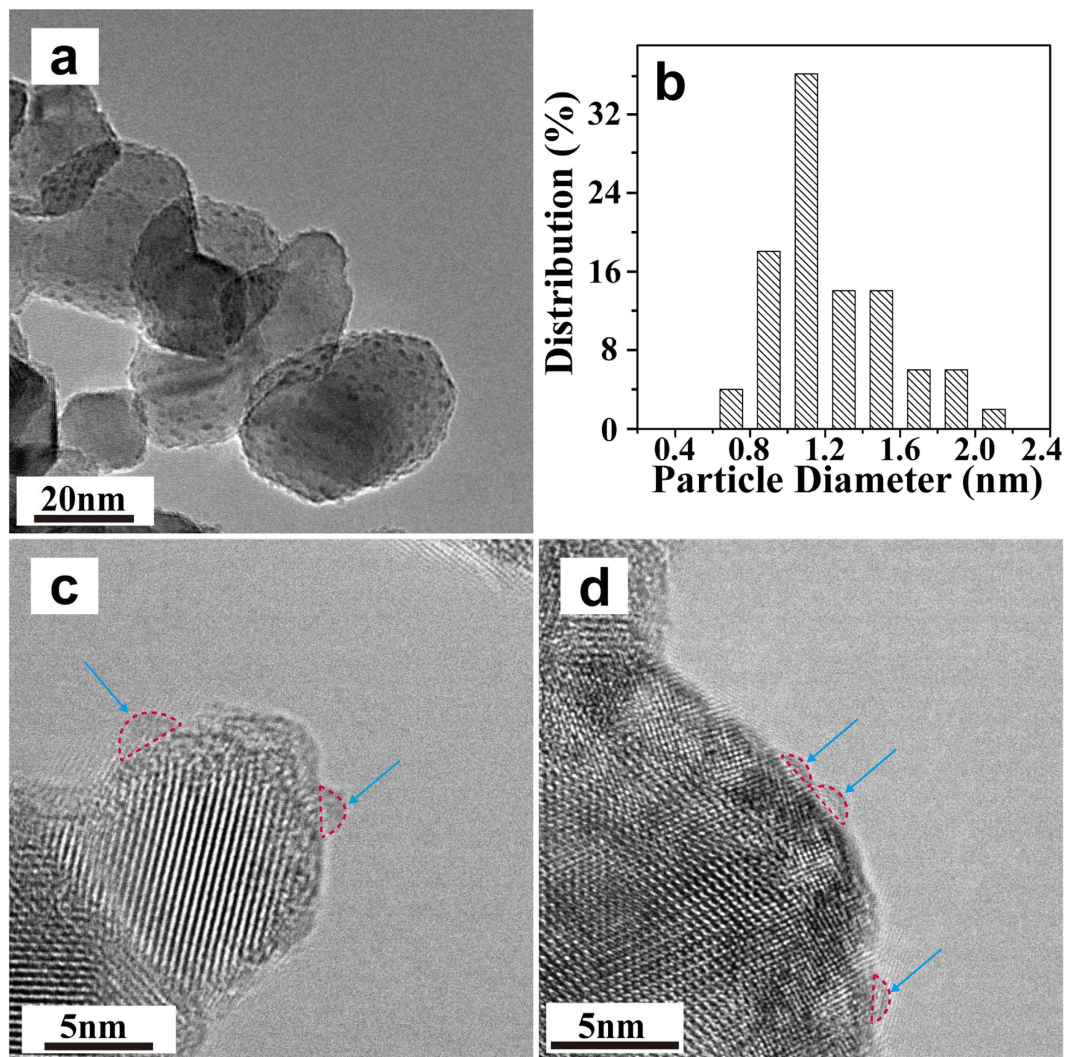


Figure 2. A HRTEM image (a) and the corresponding particle size distribution histogram (b) of the PD sample. (c) and (d) show the representative individual nanoparticles of (a). Pd particles are indicated by blue arrows.

Moreover, it is hard to distinguish the particle boundaries of Pd nanoparticles in the TEM images. The disordered bulk structure of Pd particles on the TiO_2 surface indicates that irregular arrangement of atoms constitutes the Pd metal particles. Ohyama *et al.*²³ reported that Rh or Pt metal particles photodeposited on the TiO_2 surface were not identified by TEM, although energy dispersive X-ray spectroscopy revealed that the metal species having a few dozen nanometers on the TiO_2 surface. The authors suggested that the group VIII metal strongly interact with reducible metal oxide supports (*e.g.*, TiO_2) when the supports are reduced, leading to the Rh or Pt metal (in our case, the Pd metal) a disordered structure on TiO_2 . In addition, for the PD-300 sample after high temperature treatment in N_2 , the size distribution of Pd particles is similar to the pristine PD sample, indicating a strong interaction between Pd particles and the support (Fig. 3a and b). It is worth noting that, the disorganized structure of Pd particles in the PD sample was changed by the thermal treatment. The PD-300 sample exhibits quasi-spherical morphology with obvious particle boundaries. The CA value of Pd particles increases to about 90° (Fig. 3c and d). Moreover, the spacing of crystallographic planes of 0.225 nm agrees well with the (111) lattice planes of Pd (Fig. 3c and d), indicating the rearrangement of Pd atoms and formation of crystalline structure under the 300°C treatment in N_2 . As demonstrated by XRD results (Fig. 1b), two small Pd metal peaks around 40.1 and 46.7° appear for this sample.

For the DP sample, Pd nanoparticles with quasi-spherical morphology are deposited on the support showing wider particle size distribution and a larger average size about 3–5 nm (Fig. 4a and b). Pd atoms are clearly detected and regularly queued along the lattice planes in this sample (Fig. 4c and d). The lattice spacing of Pd particles at 0.225 and 0.195 nm can be determined by measuring the spaces between adjacent filamentary fringes, which could be ascribed to the (111) and (200) plane of Pd, respectively. Furthermore, well-organized crystalline surfaces and bulk structure of Pd metal particles with the CA value of about 110° can be obtained for the DP sample.

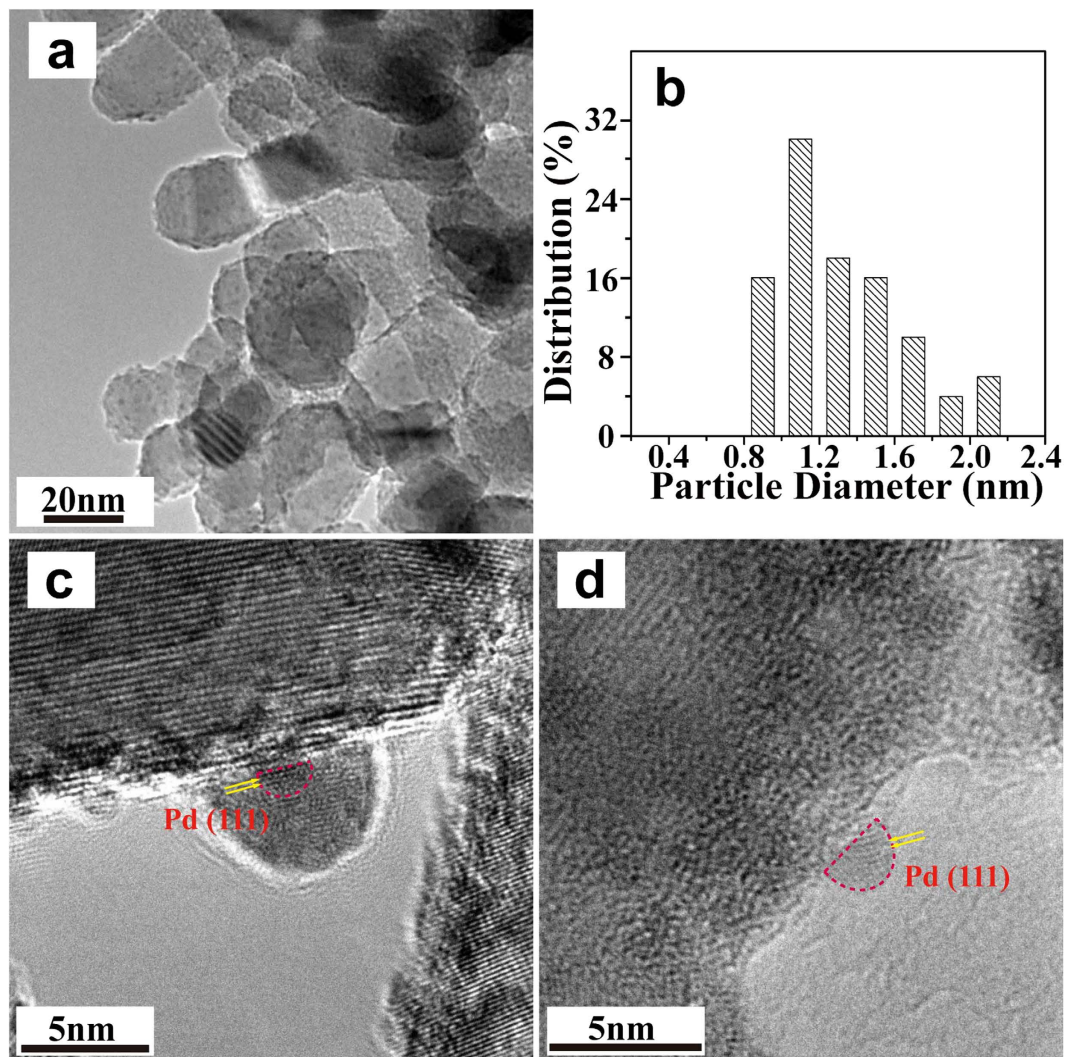


Figure 3. A HRTEM image (a) and the corresponding particle size distribution histogram (b) of the PD-300 sample. (c) and (d) show the representative individual nanoparticles of (a).

The Cs-corrected STEM-HAADF technique (Fig. 5), which can provide directly interpretable atomic number (Z) contrast information, was utilized to further characterize the morphological and structural features of Pd nanoparticles supported on the TiO₂ support by the PD and DP method. As shown in Fig. 5a and b, Pd particles in flattened spherical shape are located on the TiO₂ surface and the interface of the Pd metal and TiO₂ support is ambiguous. It is worth noting that the discontinuous phase of Pd metal in this sample containing the jumbled Pd atoms can be distinctly observed by using the atomic level STEM-HAADF, but it is difficult to discern the phase by the HRTEM (Fig. 2c and d) owing to the lack of a spherical aberration-corrector. By contrast, the bigger quasi-spherical Pd particles with well-organized structure and continuous phases are presented in the DP sample (Fig. 5c and d). The (200), (111), (222) and (220) lattice planes of face centered cubic Pd metal are distinct in the Cs-corrected STEM-HAADF images indicating Pd atoms are closely packed on the TiO₂ surface during calcination and reduction and the particle boundaries, crystal facets, and metal-support interfaces are obvious. Liu *et al.*³⁰ reported the formation of single Pd atoms on ethylene glycolate-stabilized ultrathin TiO₂ nanosheets by the photodeposition. However, we did not observe the appearance of such single Pd atoms on the commercial anatase TiO₂ support using the Cs-corrected STEM-HAADF.

Fig. 6 shows *in situ* FTIR spectra of CO adsorbed on three Pd/TiO₂ samples. Analysis of FTIR spectra was carried out by a deconvolution method to calculate the relative value of different bond structures³⁴. According to the different adsorption sites and intensity of CO on the Pd metal particles, the different surface information (such as steps, defects and terraces) in the supported Pd catalyst samples could be obtained. Two series of peaks (A- and B-type) can be distinguished roughly in the region of 2200–1800 cm⁻¹, and all spectra were deconvoluted to elemental adsorption bands (Table 1): A₁ (2070–2110 cm⁻¹), A₂ (2020–2070 cm⁻¹), B₁ (1950–2010 cm⁻¹), B₂ (1900–1940 cm⁻¹), and B₃ (1800–1890 cm⁻¹). A₁ and A₂ peaks should be attributed to interrupted linear adsorption of CO on defects (steps, terraces and kinks) of Pd crystallites, or CO linearly adsorbed on well dispersed but not crystalline Pd^{35,36}. Based on the density functional and vibrational spectroscopy studies, Yudanov *et al.*³⁷

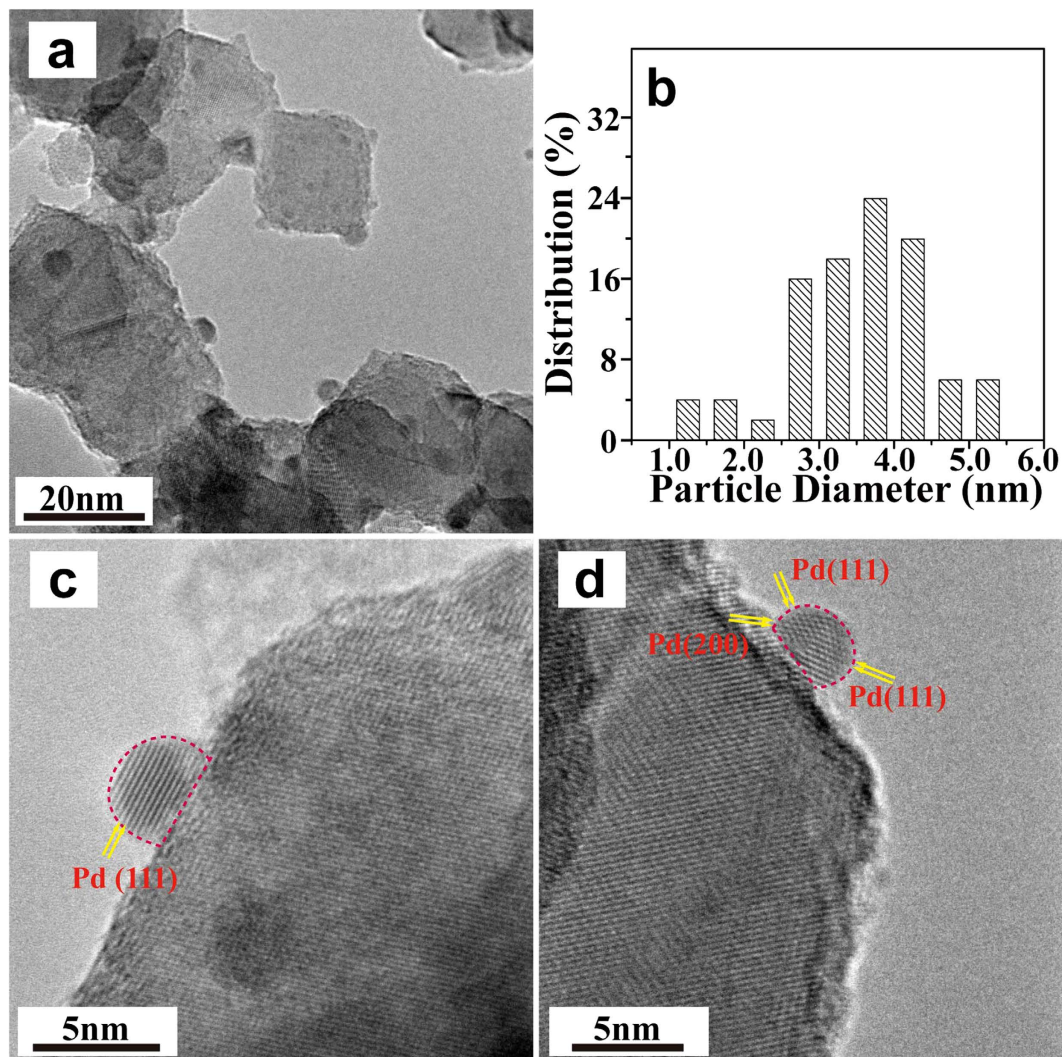


Figure 4. A HRTEM image (a) and the corresponding particle size distribution histogram (b) of the DP sample. (c) and (d) show the representative individual Pd nanoparticles.

revealed that on-top adsorption on low-coordinated Pd centers (cluster corners and surface kinks) is stronger than that on regular (111) and (100) facets. The B_1 peaks with a wavenumber range $1950\text{--}2010\text{ cm}^{-1}$ are suggested as bridge-bonded defective species, for example, bridged CO on surface steps or particle edges. Meanwhile, B_2 and B_3 peaks with the relatively low frequency range were assigned to CO bridge-bonded on (111) terraces or tri-coordinated CO adsorption^{35,38}. It is noted that the presence of multiple CO adsorption (including bridged or threefold bonds) reflects the existence of the high coordination Pd sites in the Pd catalysts. For the DP sample, the B_1 , B_2 and B_3 bands shift toward higher wavenumbers compared with that of the PD sample, indicating the presence of more or less extended planes³⁵. Meanwhile, the intensity of A_1 and A_2 bands at 2086 and 2070 cm^{-1} diminishes obviously. However, a strong band at 2120 cm^{-1} is observed, which may be attributed to the linear CO on Pd^+ ions³⁹. This result indicates that Pd nanoparticles of the DP sample are not totally reduced by H_2 . Fig. 6 also indicates the decrease of intensity of A_1 and A_2 bands for the PD-300 sample.

Based on the deconvolution of FTIR spectra, relative areas of linear bonds (A_1 and A_2 peaks) and multiple bonds (B_1 , B_2 and B_3 peaks) for three Pd/TiO₂ samples are summarized in Table 1. The ratios of the relative area of linear bonds (R_A) to the relative area of multiple bonds (R_B) are also calculated and displayed in Table 1. The PD sample shows the relatively higher R_A and lower R_B value, with the R_A/R_B ratio of 0.23 (approximating 0.07 for the DP sample). It demonstrates that Pd particles in the PD sample exhibit less ordered surfaces with more low coordination sites (surface defects, edges, steps, etc.)³⁸. This conclusion is consistent with the above HRTEM and STEM-HAADF results that reveal that smaller Pd nanoparticles with disordered structure nature on the TiO₂ surface can be obtained by the PD method. In addition, thermal treatment of the PD sample results in a decrease of R_A/R_B from 0.23 to 0.08, demonstrating the reduction of defect sites and the change of structure of Pd particles will occur by transforming Pd atoms with low coordination into those with high coordination.

The heterogeneous hydrogenation of phenylacetylene was carried out in an autoclave or a batch reactor in previous researches^{40–44}. The catalytic performance of the resulting Pd/TiO₂ samples was evaluated by

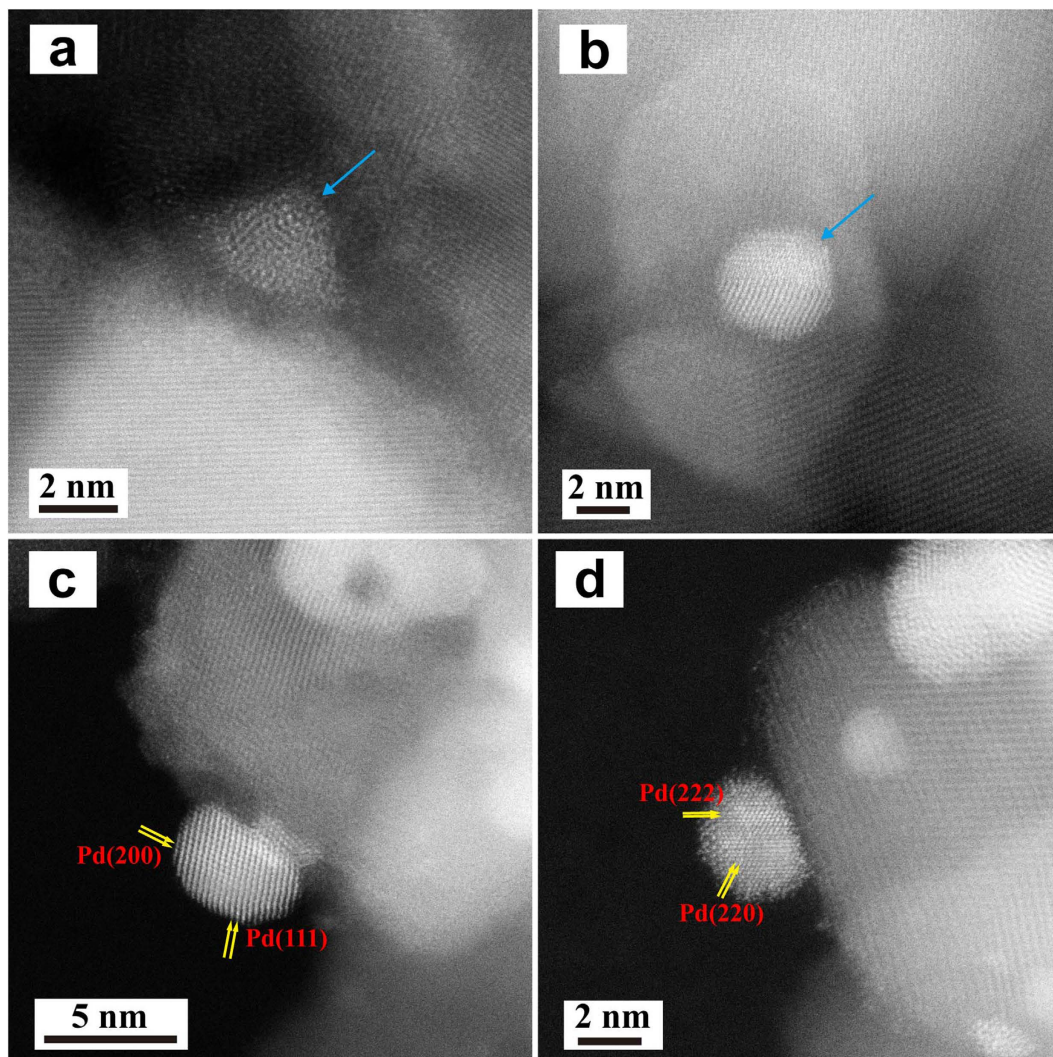


Figure 5. Representative Cs-corrected STEM-HAADF images of PD (a,b) and DP (c,d). Pd particles with low-ordered Pd atoms in the PD sample are indicated by blue arrows and panels of Pd particles with well-organized Pd atoms are shown in the DP sample.

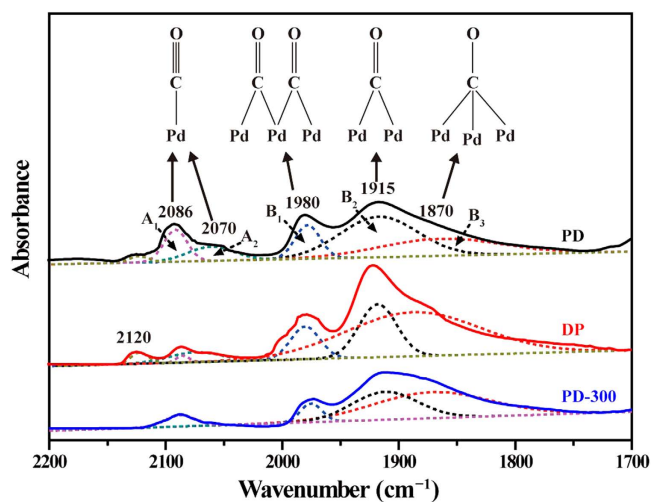


Figure 6. The deconvolution of CO-FTIR spectra of three catalyst samples.

Samples	Relative areas of linear bonds (R_A) [*]		Relative areas of multiple bonds (R_B) [#]			The ratio of R_A/R_B
	A ₁	A ₂	B ₁	B ₂	B ₃	
	2070–2110 cm^{-1}	2020–2070 cm^{-1}	1950–2010 cm^{-1}	1900–1940 cm^{-1}	1800–1890 cm^{-1}	
PD	0.10	0.09	0.11	0.42	0.28	0.23
DP	0.01	0.05	0.10	0.21	0.63	0.07
PD-300	0.06	0.01	0.07	0.33	0.53	0.08

Table 1. Relative areas of peaks from CO-FTIR for three catalyst samples. ^{*}The sum of relative areas of A₁ and A₂. [#]The sum of relative areas of B₁, B₂ and B₃.

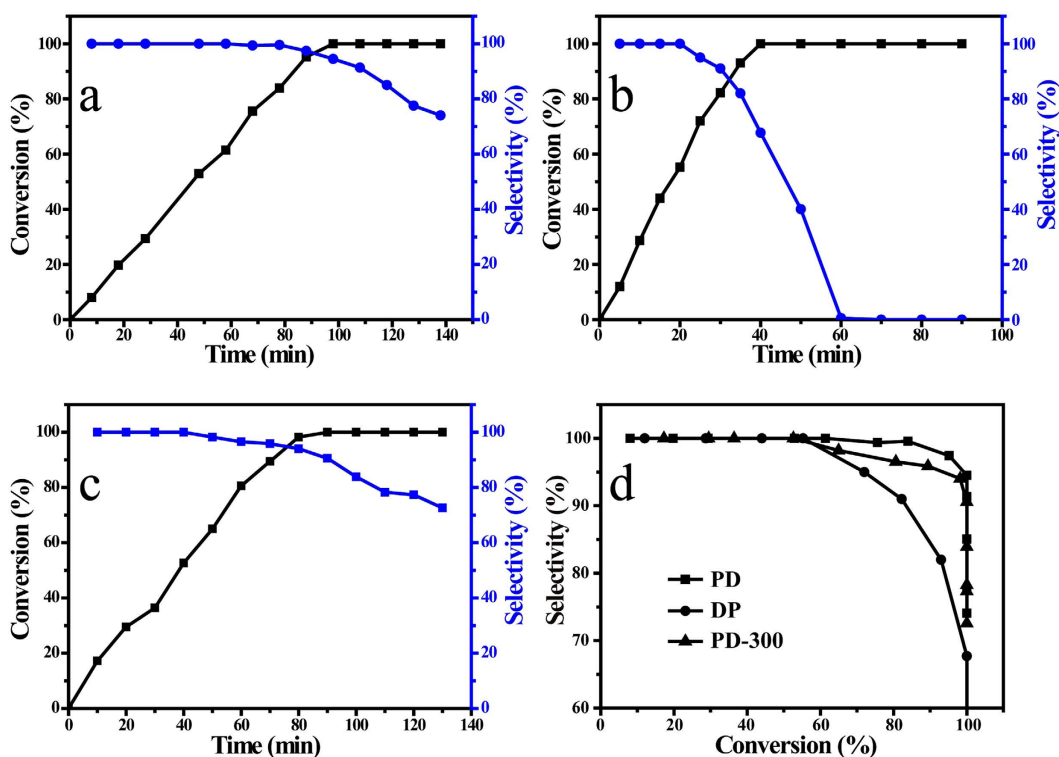


Figure 7. Selective hydrogenation of phenylacetylene to styrene in the presence of the PD (a), DP (b), and PD-300 (c) sample. Conversion of phenylacetylene vs selectivity to styrene is also presented as (d).

semihydrogenation of phenylacetylene to styrene. Fig. 7 shows the conversion of phenylacetylene and selectivity to styrene as a function of reaction time. For the PD catalyst sample, complete conversion of phenylacetylene occurred at 100 min (Fig. 7a). The DP catalyst sample exhibits higher initial activity, and the conversion of phenylacetylene reaches 100% at 40 min (Fig. 7b). The particle size may affect the specific activity of the Pd/TiO₂ sample for phenylacetylene semihydrogenation. Some groups reported that the catalytic activity of supported Pd catalysts in selective hydrogenation of alkyne decreases as the Pd particles size decreases, especially when the average size is very small ($\leq 3\text{--}5\text{ nm}$), probably due to the different band structure characteristics of nano-sized metal compared to bulk metal^{45,46}. The high activity for total hydrogenation of alkyne to alkane may result in low alkene selectivity. As shown in Fig. 7b, the selectivity to styrene for the DP sample drops straightly with the prolongation of reaction time. Especially, the selectivity falls quickly after the 100% conversion and 0% selectivity to styrene is obtained after 60 min. In contrast, the PD sample can keep high selectivity during the reaction: after reaction time 100 min, 95% selectivity is obtained (Fig. 7a). In addition, Fig. 7c exhibits that the PD-300 sample has a similar catalytic performance to the PD sample without thermal treatment, but the selectivity declines rapidly after the conversion reaches 100%. Fig. 7d presents the styrene selectivity as a function of phenylacetylene conversion, showing the different downward trends of the selectivity with the increase of conversion for the three samples. The selectivity to styrene in the same phenylacetylene conversion is in the order: PD > PD-300 > DP. It is worth noting that this order is consistent with the value of the R_A/R_B ratio in Table 1 from the results of *in situ* FTIR spectra of CO adsorbed on three Pd/TiO₂ samples.

Detailed kinetic results such as initial reaction rate r and initial rate constant k in reactions from phenylacetylene to styrene and from styrene to ethylbenzene were computed to quantitatively analyze the influence of catalysts on the reaction process. Fig. 8a shows that the consumption of phenylacetylene with reaction time in hydrogenation of phenylacetylene to styrene, and the DP sample exhibits highest activity for the R₁ reaction with

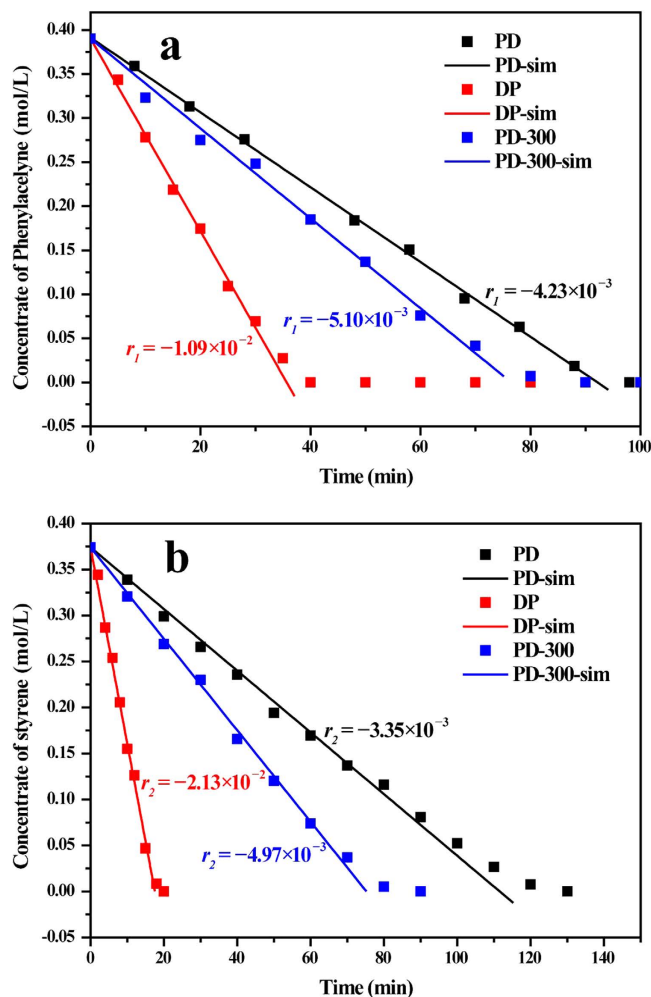


Figure 8. Concentration of phenylacetylene (a) and styrene (b) vs time during the phenylacetylene and styrene hydrogenation respectively. PD-sim, DP-sim and PD-300-sim lines are derived from the linear fit of data at the beginning of reactions to obtain approximate initial reaction rate r .

	r_1 (mol L ⁻¹ min ⁻¹ 10 ⁻³)	r_2 (mol L ⁻¹ min ⁻¹ 10 ⁻³)	k_1 (mol L ⁻¹ g _{cat} ⁻¹ MPa ⁻¹ min ⁻¹)	k_2 (mol L ⁻¹ g _{cat} ⁻¹ MPa ⁻¹ min ⁻¹)	k_2/k_1
PD	-4.23	-3.35	0.169	0.134	0.792
DP	-10.9	-21.3	0.436	0.852	1.954
PD-300	-5.10	-4.97	0.204	0.199	0.975

Table 2. The initial reaction rate r and rate constant k of phenylacetylene and styrene hydrogenation for three catalyst samples.

an initial reaction rate $-0.0109 \text{ mol L}^{-1} \text{ min}^{-1}$ from the slope of a fitted line. Compared with the DP sample, the PD sample catalyzed the R_1 reaction with an only almost half reaction rate ($-0.00423 \text{ mol L}^{-1} \text{ min}^{-1}$) and, after thermal treatment of the PD sample in 300°C , the reaction rate increases to $-0.00510 \text{ mol L}^{-1} \text{ min}^{-1}$. The similar trend among three samples is shown in Fig. 8b for hydrogenation of styrene to ethylbenzene R_2 . It should be noted that the DP catalyst with a reaction rate $-0.0213 \text{ mol L}^{-1} \text{ min}^{-1}$ are over six times active than the PD sample with a reaction rate $-0.00510 \text{ mol L}^{-1} \text{ min}^{-1}$ in hydrogenation of styrene. The value of reaction rate r , reaction rate constant k (calculated from Eqs (8) and (9)) and the ratio of k_2/k_1 are list in Table 2. The ratio of k_2/k_1 is used to quantitatively evaluate whether the catalyst facilitate styrene production and the lower ratio are more prone to maintain the higher styrene selectivity. The PD sample shows the lowest ratio of k_2/k_1 (0.792) indicating the PD sample may exhibit the highest selectivity of styrene in the semihydrogenation reaction of phenylacetylene due to the relative lower reaction rate in R_2 . Although the DP sample has both the highest k_1 and k_2 , the k_2 is great outweigh the k_1 . Therefore, this catalyst would have lowest selectivity of styrene because of the highest k_2/k_1 (1.954). In addition, The PD-300 sample derived from the PD sample after thermal treatment shows the ratio of k_2/k_1 increases from 0.792 to 0.975 indicating the decrease of selectivity to styrene during semihydrogenation. It

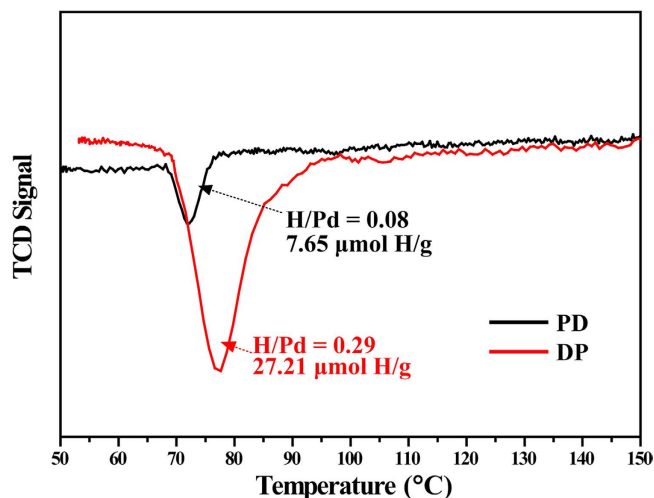


Figure 9. H_2 -TPR profiles of the PD and DP samples. The amounts of Pd per gram of the two Pd/TiO₂ catalysts were calculated from results of the ICP experiment.

should be noted that all results from kinetic analysis are consistent with results from catalytic evaluation of phenylacetylene semihydrogenation in which the PD sample have highest selectivity to styrene and the DP sample would generate more ethylbenzene at same phenylacetylene conversion. The kinetic parameters of this reaction show some difference between phenylacetylene semihydrogenation and acetylene semihydrogenation. Generally, the reaction constant of acetylene to ethylene is two or three orders of magnitude higher than that of ethylene to ethane^{47–49}. However, the DP-catalyzed reaction exhibits the faster reaction of double bonds to single bonds, which would seem to be an anomaly in acetylene hydrogenation. From the previous research of phenylacetylene semihydrogenation, there is an order of magnitude difference between R_2 and R_1 , and even the R_2 shows the higher reaction constant than R_1 in Pd-catalyst systems^{50–52}. We suppose that the same catalysts show different reaction mechanisms between phenylacetylene semihydrogenation and acetylene semihydrogenation, mainly because the small molecular acetylene would dissolve in the subsurface of Pd metal to suppress formation of the β -hydride which extremely accelerates the reaction of ethylene to ethane and this process would not occur for the phenylacetylene, a relatively larger molecule¹⁸. So, the $k_2 > k_1$ would be normal in the phenylacetylene semihydrogenation.

In order to elucidate the origin of the catalytic performance, we performed H_2 -TPR measurements for the PD and DP sample. As shown in Fig. 9, TPR profiles of both Pd catalysts show only one negative peak ranged from 67 to 95 °C. The negative peak centered in the region of 60–100 °C is attributed to the decomposition of hydrogen-saturated β -hydride⁵³. It should be noted that the initiation of the decomposition peak is at the same temperature, 67 °C, indicating same activity of the β -hydride in two samples. However, the DP sample displays a higher peak intensity and a big peak area. The higher H/Pd value 0.29 demonstrates a large amount of β -hydride in this sample (H/Pd 0.08 for PD). Under hydrogenation conditions, unselective hydrogenation of alkyne proceeds on β -hydride which is feasibly formed on large Pd ensembles with high coordination Pd sites (terrace atoms), leading to total hydrogenation of alkyne to alkane and lowered alkene selectivity^{7,8}. Thus, the larger Pd particles in the DP sample may generate more β -hydrides, which facilitate the total hydrogenation to alkane. According to literature, modifying morphology and structure of Pd particles for decreasing β -hydride phases may be beneficial for selective hydrogenation of phenylacetylene. For example, several groups have reported that the ethylene selectivity in acetylene hydrogenation over Pd catalysts is improved when the catalysts was modified with Si species either by selective deposition of Si on the Pd surfaces through chemical vapor deposition¹¹ or by uniform distribution on the Pd surfaces through forming alloys with Pd^{45,54}. The amounts of chemisorbed hydrogen are thus reduced on the Si-modified catalyst compared with those on the Pd-only catalyst mostly by geometrical dilution. On the other hand, Osswald *et al.*¹⁶ reported that the isolation of active Pd sites in crystallographic structure of Pd-Ga intermetallic compounds can result in decreasing availability of hydrogen because of the absence of Pd hydrides; Teschner *et al.*¹⁸ revealed that C dissolved in the top layers modifies the surface electronic structure of Pd and hinders the participation of subsurface H in the catalytic process. In our case, the above characterization results demonstrated that smaller Pd ensembles with low coordination Pd sites can be produced by the photodeposition method, which generate less β -hydrides in favor of selective hydrogenation of alkyne to alkene. Moreover, the value of R_A/R_B ratios from the result of *in situ* FTIR has been used to estimate catalytic performance of Pd catalysts for selective hydrogenation of acetylene⁷. The disordered Pd metal blocking multiple adsorption of CO on high coordinated Pd sites could lead to the increase of the R_A/R_B ratio, favoring high selectivity of acetylene to ethylene. Similarly, the higher styrene selectivity under the same phenylacetylene conversion is normally achieved at a higher R_A/R_B ratio for the PD sample with more low coordination Pd sites.

For exploring the possible electronic effect of the morphology and structure features of Pd particles, the surface information of three Pd/TiO₂ samples were further evaluated using a XPS technique (Fig. 10). The binding energy (BE) of Pd 3d_{5/2} for the PD sample appears at 334.9 eV, which is of lower energy than that of a Pd foil at

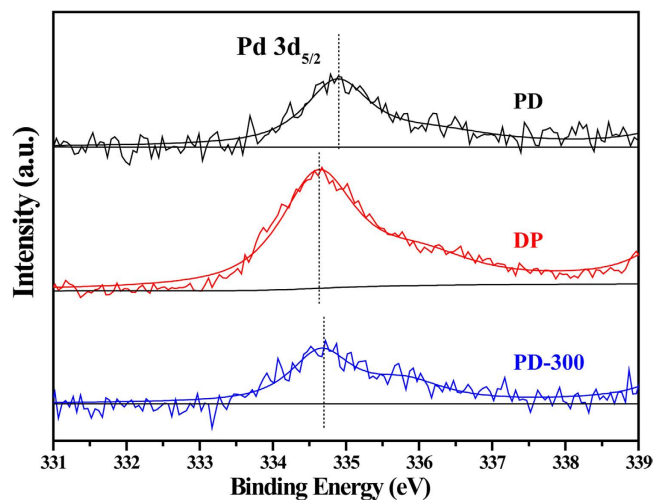


Figure 10. XPS spectra of Pd $3d_{5/2}$ for three Pd/TiO₂ samples.

335.2 eV⁵⁵. The lower BE value indicates that the surfaces of Pd metal particles are more electron-rich than the Pd foil, thus the negative shift can be attributed to the electron donor property of the support TiO₂. Wahlström *et al.*⁵⁶ reported that photoirradiation to TiO₂ generates TiO_{2-δ}, which can serve as the formation site for metal particles. These TiO_{2-δ} species were suggested to contribute to an electron trap under the conduction band of TiO₂, leading to a flow of excited electrons to TiO_{2-δ} and the reduction of metal ions on TiO_{2-δ}.⁵⁷ Compared to that of the PD sample, DP and PD-300 samples have lower BE value of Pd $3d_{5/2}$ (334.6 and 334.7 eV, respectively), indicating that the surfaces of Pd metal particles of the PD sample has less electrons than that of the DP and PD-300 samples⁵⁸. The more electron-deficient Pd in the PD sample could probably weaken the adsorption of product styrene on the Pd surface and inhibit the subsequent hydrogenation of styrene to ethylbenzene, resulting in high styrene selectivity. This result agrees with those of the PdCu bimetallic catalyst⁹ and the Pd/SiO₂ catalyst with Pd silicide formation⁴⁵, in which Pd is electron-deficient (larger binding energy from XPS results) compared to the monopalladium sample. In the latter case, the authors carried out additional hydrogenation reaction experiments with only styrene and the mixture of styrene and phenylacetylene as a reactant. The reaction results demonstrated that the commercial silica supported Pd catalyst (without Pd silicide) exhibited higher styrene conversion than the Pd/SiO₂ with Pd silicide during hydrogenation of only styrene or the mixture of styrene and phenylacetylene⁴⁵. Moreover, Fig. 6 shows that DP and PD-300 samples have lower BE value of Pd $3d_{5/2}$, compared with that of the PD sample, also indicating that the surface of Pd metal particles of the former two samples have more electrons and the stronger metal-support interaction⁵⁸. In addition, the PD-300 sample also shows lower Binding Energy than the PD sample, demonstrating that the thermal treatment can make catalysts more surface electrons and stronger metal-support interaction. As the results from the (S)TEM, there is a strong correlation between the well-organized structure (in DP and PD-300 samples) and affluent surface electrons.

Schematic representation of the active sites of DP and PD catalyst samples which are responsible for total and selective hydrogenation of phenylacetylene is shown in Fig. 11. For the DP sample, large Pd ensembles are formed on the TiO₂ support with regular arrangement of Pd atoms. A small amount of dissociated H atoms is adsorbed on the surface of Pd metal forming the surface H, which is responsible for selective hydrogenation of phenylacetylene to styrene. Meanwhile, dissolved subsurface H atoms are predominant in the Pd crystal lattices producing the β -hydrides and largely enhancing the total hydrogenation of phenylacetylene. By contrast, for the PD sample, the disordered structure may generate discontinuous spaces that enable H atoms permeating into the bulk of Pd metal and adsorbing around without formation of β -hydride phases. This unique structure of Pd particles is helpful in diminishing the hydrogen supply for the unwanted styrene hydrogenation. Therefore, the surface H atoms dissolved in the external and internal structure would be predominant in the PD sample, resulting in better selectivity to styrene due to more surface H atoms. On the other hand, the more electron-deficient Pd particles in the PD sample could probably weaken the adsorption of product styrene and inhibit the subsequent hydrogenation of styrene to ethylbenzene.

In addition, to check whether the catalyst can retain its hydrogenation selectivity, the PD sample was repeatedly used for the semihydrogenation of phenylacetylene for four times, and the experimental results are plotted in Fig. 12. The results show excellent reusability for this sample keeping high selectivity for the semihydrogenation.

In summary, the TiO₂-supported Pd catalyst was fabricated by photodeposition for phenylacetylene semihydrogenation to obtain enhanced styrene selectivity. The effects of thermal treatment on the structural, morphological, and catalytic properties of the photodeposited Pd/TiO₂ were also investigated. For comparison, a conventional deposition-precipitation method was used to prepare a contrastive Pd/TiO₂ sample. HRTEM and Cs-corrected STEM-HAADF results demonstrate that flattened spherical Pd nanoparticles with ambiguous lattice fringes and indistinct particle boundaries were deposited on the TiO₂ surface by the PD method. Larger quasi-spherical Pd ensembles are formed on the TiO₂ support with regular arrangement of Pd atoms by the DP method. The disorganized structure of photodeposited Pd nanoparticles was changed by the thermal treatment at

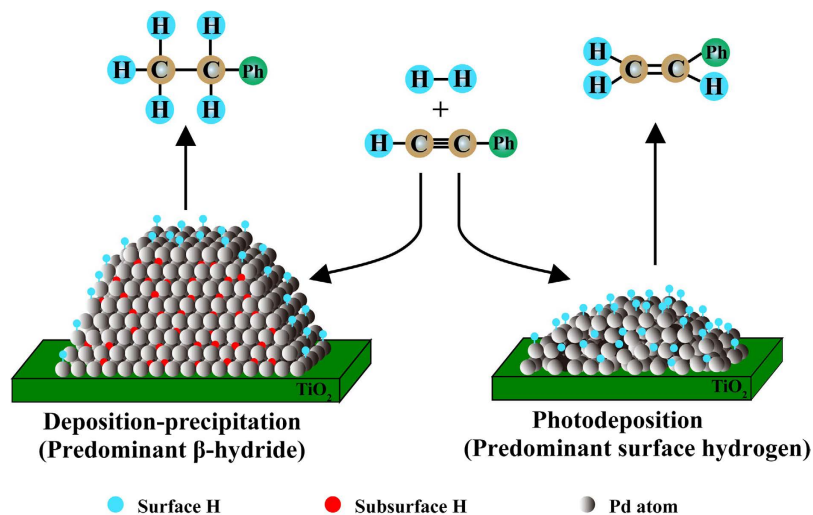


Figure 11. Schematic representation of Pd/TiO₂ catalysts prepared by two methods for semihydrogenation of phenylacetylene to styrene. (For clarity, no phenylacetylene adsorbates are depicted on the surface; Ph refers to the phenyl group).

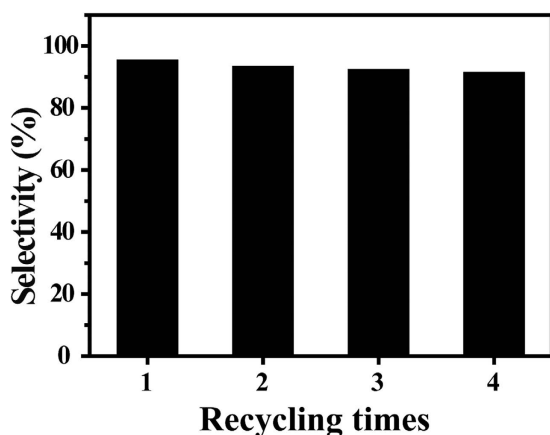


Figure 12. Reuse results of the PD sample for semihydrogenation of phenylacetylene to styrene. The conversion of phenylacetylene is 100%.

300 °C exhibiting quasi-spherical morphology with obvious particle boundaries. Analysis of *in situ* FTIR spectra demonstrated that Pd particles in the PD sample exhibit less ordered surfaces with more low-coordination sites. The kinetic results show the rate constant ratio of styrene to phenylacetylene hydrogenation for the DP sample is much greater than the ratio for the PD sample suggesting the PD sample may obtain higher selectivity in phenylacetylene semihydrogenation. H₂-TPR illustrated that the PD sample with disordered structure of Pd particles may prevent the formation of β -hydrides and probably produce more surface H atoms, which result in the excellent selectivity in phenylacetylene semihydrogenation. In addition, more metal surface electrons and stronger metal-support interaction in the DP and PD-300 samples, demonstrated by XPS, may suggest the well-organized structure from thermal treatment. The control of structural and morphological features of Pd nanoparticles by the photodeposition method imposes a beneficial effect on catalytic semihydrogenation selectivity.

Methods

Materials. Palladium chloride (PdCl₂), phenylacetylene and sodium carbonate (Na₂CO₃) purchased from J&K Scientific Ltd. (Beijing, China) were of analytical grade and used without any further purification. Anatase TiO₂ (purity > 99.9%) was obtained from Alfa Aesar Ltd. (Beijing, China). The deionized water with a conductance below 10⁻⁶ S cm⁻¹ was used in all synthesis and washing processes.

Catalyst preparation. Supported Pd catalysts with 1.0 wt% Pd contents were prepared by the photodeposition and deposition-precipitation method (denoted as PD and DP, respectively), with anatase TiO₂ powder as the support and PdCl₂ as the metal precursor compound. The PD catalyst was prepared as follows: TiO₂ powder was mixed with distilled water containing a required amount of PdCl₂, which was adjusted to yield catalysts containing 1.0 wt% Pd, followed by addition of isopropanol as the sacrificial agent under stirring. The suspension

was then subjected to ultraviolet (UV) irradiation with a high-pressure Hg lamp (300 W) for 3 h. The sample was centrifuged and dried at 110 °C. The dried PD sample was further thermally treated at 300 °C in N₂ (99.999%, 40 mL min⁻¹) for 4 h, yielding the PD-300 catalyst.

For comparison, the conventional DP method was used to prepare supported catalysts with same Pd loadings as follows: anatase TiO₂ was suspended in distilled water containing a required amount of PdCl₂·Na₂CO₃ aqueous solution (0.25 mol L⁻¹) was added dropwise to the suspension under stirring until pH value reached 10 and the suspension was constantly stirred for 5 h. The resulting suspension was then washed until no chloride anion was detected, and dried at 110 °C. Finally, the sample was calcined in a muffle furnace at 400 °C for 5 h and further reduced at 300 °C for 4 h in H₂ (99.999%, 40 mL min⁻¹), resulting the DP catalyst.

Catalyst characterization. XRD patterns were recorded on a Shimadzu XRD-6000 diffractometer using Cu K α radiation ($\lambda = 0.15406$ nm) operated at 40 kV and 30 mA, with a scan step of 2θ 0.02° and a scan speed 10° min⁻¹ in the 2θ range from 3° to 90°. The actual Pd loadings were analyzed by ICP-ES using a Shimadzu ICP-7500 instrument. HRTEM characterization was performed on JEOL JEM-2100F (200 kV). We counted the average size of 100 particles. Cs-corrected STEM-HAADF imaging was recorded using JEOL JEM-ARM200F (200 kV) equipped with a cold field emission gun and a spherical aberration corrector for probe correction. XPS was recorded using an ESCALAB250 X-ray photoelectron spectrometer equipped with monochromatized Mg K α X-ray radiation (1253.6 eV photons). The binding energy (BE) was determined by utilizing the C1s line as a reference with energy of 285.0 eV. *In situ* FTIR adsorption spectroscopy of CO experiments were recorded at resolution of 4 cm⁻¹ on a Nicolet 380 instrument. The experiments were carried out in a custom-built quartz cell equipped with KBr windows allowing sample activation and successive measurements in the range of 20–550 °C. The Pd/TiO₂ samples were pressed into a self-supporting wafer and placed in a quartz IR cell. After the cell was purged by N₂ (99.999%, 50 mL min⁻¹) at room temperature for 30 min, the catalyst was scanned to get a background record. Then the catalyst was exposed to a CO flow for 30 min and degassed by N₂ (99.999%, 50 mL min⁻¹) for 10 min to desorb the physical adsorption CO, and IR spectra were recorded. H₂-TPR were conducted on Micromeritics ChemiSorb 2920, equipped with a thermal conductivity detector (TCD). The experiments consisted of exposure of 0.05 g Pd catalyst sample to a flow of 10% H₂/Ar (50 mL min⁻¹) at 50 °C for 30 min and then heating to 150 °C at 5 °C min⁻¹.

Evaluation of catalytic performance. Liquid-phase semihydrogenation of phenylacetylene and independent hydrogenation of styrene was carried out in a 250 mL stainless steel autoclave. 0.05 g of Pd/TiO₂ catalyst was placed into the autoclave with 3 mL of phenylacetylene (styrene) and 67 mL of ethanol (as a solvent). After the autoclave was purged with 1.0 MPa hydrogen gas for three times, 0.5 MPa of H₂ pressure remained. The reaction temperature was kept at 25 °C during the reaction. When the reaction time was reached, products could be obtained from a liquid outlet and were analyzed using a Shimadzu GC-2014C chromatographic instrument by means of a flame ionization detector and a 9006-PONA capillary column. The signals of phenylacetylene, styrene, and ethylbenzene (as the reactant, desirable product, and byproduct respectively in semihydrogenation of phenylacetylene) were recorded and n-heptane was used as a standard sample to analyze data. Catalytic activity, selectivity, concentration and the reaction rate were calculated, based on chromatographic data by the area normalization method, as follows:

$$\text{Conversion (\%)} = \frac{\text{moles of converted reactants}}{\text{moles of reactants in feed}} \times 100 \quad (1)$$

$$\text{Selectivity (\%)} = \frac{\text{moles of desirable products}}{\text{moles of converted reactants}} \times 100 \quad (2)$$

$$\text{Concentration} = C = \frac{\text{moles of reactants in feed} - \text{moles of converted reactants}}{\text{total volume of liquid}} \quad (3)$$

$$\text{The reaction rate} = r = \frac{dC}{dt} \quad (4)$$

Kinetic studies of hydrogenation. The Fig. 13 shows the processes of phenylacetylene hydrogenation. The calculation of kinetic results of phenylacetylene and independent styrene hydrogenation in the liquid phase was based on models from previous research^{44,50}.

$$\frac{d(C_{Ph})}{dt} = -k_1 m_c \theta_{Ph} P_{H_2} - k_3 m_c \theta_{Ph} P_{H_2}^{3/2} \quad (5)$$

$$\frac{d(C_{St})}{dt} = k_1 m_c \theta_{Ph} P_{H_2} - k_2 m_c \theta_{St} P_{H_2} \quad (6)$$

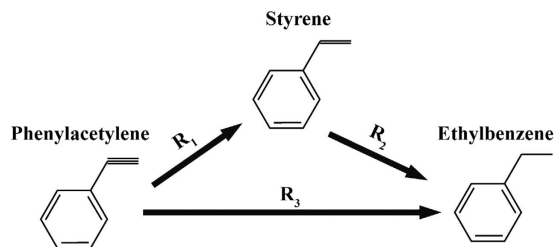


Figure 13. The scheme of phenylacetylene hydrogenation.

$$\frac{d(C_{Eb})}{dt} = k_2 m_c \theta_{St} P_{H_2} + k_3 m_c \theta_{Ph} P_{H_2}^{3/2} \quad (7)$$

C_i = molar concentration of species i , mol/L⁻¹

t = time, min

k_i = rate constant for reaction pathway R_i , mol (L_{cat} MPa^{1.3/2} min)⁻¹

m_c = catalyst mass, g

θ = surface concentration, mol/L⁻¹

P_{H_2} = pressure of hydrogen, MPa

r = reaction rate, mol L⁻¹ min⁻¹.

The R_3 cannot occur in catalytic reaction based on the result of hydrogenation reaction. Along with initial condition, $\theta_{Ph} = 1$, $\theta_{St} = 0$ for independent phenylacetylene hydrogenation and $\theta_{Ph} = 0$, $\theta_{St} = 1$ for independent styrene hydrogenation, the transient reactor mass balance of Eqs (5–7) can be expressed as following equations:

$$r_1 = -k_1 m_c P_{H_2} \quad (8)$$

for the initial stage of phenylacetylene hydrogenation and

$$r_2 = -k_2 m_c P_{H_2} \quad (9)$$

for the initial stage of independent styrene hydrogenation.

The r_1 and r_2 are initial rate of consumption of phenylacetylene and styrene. Therefore, in the initial condition, r_1 and r_2 exhibit a zero-order dependence on concentration of reactants along with results in the literature^{43,50}.

References

- Zaera, F. Regio-, stereo-, and enantioselectivity in hydrocarbon conversion on metal surfaces. *Acc. Chem. Res.* **42**, 1152–1160 (2009).
- Borodziński, A. & Bond, G. C. Selective hydrogenation of ethyne in ethene-rich streams on palladium catalysts, Part 2: Steady-state kinetics and effects of palladium particle size, carbon monoxide, and promoters. *Catal. Rev.* **50**, 379–469 (2008).
- Teschner, D. *et al.* Alkyne hydrogenation over Pd catalysts: A new paradigm. *J. Catal.* **242**, 26–37 (2006).
- Chaudhari, R., Jaganathan, R., Kolhe, D., Emig, G. & Hofmann, H. Kinetic modelling of a complex consecutive reaction in a slurry reactor: hydrogenation of phenyl acetylene. *Chem. Eng. Sci.* **41**, 3073–3081 (1986).
- Duca, D., Liotta, L. F. & Deganello, G. Selective hydrogenation of phenylacetylene on pumice-supported palladium catalysts. *J. Catal.* **154**, 69–79 (1995).
- Pang, M., Shao, Z., Wang, X., Liang, C. & Xia, W. Toward economical purification of styrene monomers: Eggshell Mo₂C for front-end hydrogenation of phenylacetylene. *AIChE J.* **61**, 2522–2531 (2015).
- Kim, W.-J. & Moon, S. H. Modified Pd catalysts for the selective hydrogenation of acetylene. *Catal. Today* **185**, 2–16 (2012).
- McCue, A. J. & Anderson, J. A. Recent advances in selective acetylene hydrogenation using palladium containing catalysts. *Front. Chem. Sci. Eng.* **9**, 142–153 (2015).
- Guczi, L. *et al.* Pumice-supported Cu-Pd catalysts: Influence of copper on the activity and selectivity of palladium in the hydrogenation of phenylacetylene and but-1-ene. *J. Catal.* **182**, 456–462 (1999).
- Han, Y. *et al.* TiO₂ supported Pd@Ag as highly selective catalysts for hydrogenation of acetylene in excess ethylene. *Chem. Commun.* **49**, 8350–8352 (2013).
- Shin, E. W., Kang, J. H., Kim, W. J., Park, J. D. & Moon, S. H. Performance of Si-modified Pd catalyst in acetylene hydrogenation: the origin of the ethylene selectivity improvement. *Appl. Catal. A: Gen.* **223**, 161–172 (2002).
- Kim, W. J., Kang, J. H., Ahn, I. Y. & Moon, S. H. Deactivation behavior of a TiO₂-added Pd catalyst in acetylene hydrogenation. *J. Catal.* **226**, 226–229 (2004).
- Weerachawanasak, P. *et al.* Effect of strong metal-support interaction on the catalytic performance of Pd/TiO₂ in the liquid-phase semihydrogenation of phenylacetylene. *J. Catal.* **262**, 199–205 (2009).
- Kyriakou, G. *et al.* Isolated metal atom geometries as a strategy for selective heterogeneous hydrogenations. *Science (Washington)* **335**, 1209–1212 (2012).
- Boucher, M. B. *et al.* Single atom alloy surface analogs in Pd_{0.18}Cu_{0.15} nanoparticles for selective hydrogenation reactions. *Phys. Chem. Chem. Phys.* **15**, 12187–12196 (2013).
- Osswald, J. *et al.* Palladium-gallium intermetallic compounds for the selective hydrogenation of acetylene: Part II: Surface characterization and catalytic performance. *J. Catal.* **258**, 219–227 (2008).
- He, Y. *et al.* Partial hydrogenation of acetylene using highly stable dispersed bimetallic Pd-Ga/MgO-Al₂O₃ catalyst. *J. Catal.* **309**, 166–173 (2014).
- Teschner, D. *et al.* The roles of subsurface carbon and hydrogen in palladium-catalyzed alkyne hydrogenation. *Science* **320**, 86–89 (2008).

19. Wilde, M. *et al.* Influence of carbon deposition on the hydrogen distribution in Pd nanoparticles and their reactivity in olefin hydrogenation. *Angew. Chem. Int. Ed.* **47**, 9289–9293 (2008).
20. Khan, N. A., Shaikhutdinov, S. & Freund, H. J. Acetylene and ethylene hydrogenation on alumina supported Pd-Ag model catalysts. *Catal. Lett.* **108**, 159–164 (2006).
21. Kraeutler, B. & Bard, A. J. Heterogeneous photocatalytic preparation of supported catalysts. Photodeposition of platinum on titanium dioxide powder and other substrates. *J. Am. Chem. Soc.* **100**, 4317–4318 (1978).
22. Zhai, Q. *et al.* Photocatalytic conversion of carbon dioxide with water to methane: Platinum and copper(I) oxide co-catalysts with a core-shell structure. *Angew. Chem. Int. Ed.* **52**, 5776–5779 (2013).
23. Ohyama, J., Yamamoto, A., Teramura, K., Shishido, T. & Tanaka, T. Modification of metal nanoparticles with TiO₂ and metal-support interaction in photodeposition. *ACS Catal.* **1**, 187–192 (2011).
24. Hidalgo, M., Murcia, J., Navío, J. & Colón, G. Photodeposition of gold on titanium dioxide for photocatalytic phenol oxidation. *Appl. Catal. A: Gen.* **397**, 112–120 (2011).
25. Tanaka, T., Ohyama, J., Teramura, K. & Hitomi, Y. Formation mechanism of metal nanoparticles studied by XAFS spectroscopy and effective synthesis of small metal nanoparticles. *Catal. Today* **183**, 108–118 (2012).
26. Teramura, K. *et al.* *In situ* time-resolved energy-dispersive XAFS study on photodeposition of Rh particles on a TiO₂ photocatalyst. *J. Phys. Chem. C* **112**, 8495–8498 (2008).
27. Ohyama, J. *et al.* Investigation of the formation process of photodeposited Rh nanoparticles on TiO₂ by *in situ* time-resolved energy-dispersive XAFS analysis. *Langmuir* **26**, 13907–13912 (2010).
28. Herrmann, J. M., Disdier, J. & Pichat, P. Photocatalytic deposition of silver on powder titania: consequences for the recovery of silver. *J. Catal.* **113**, 72–81 (1988).
29. Fernández, A. & González-Elipe, A. “*In situ*” XPS study of the photoassisted reduction of noble-metal cations on TiO₂. *Appl. Surf. Sci.* **69**, 285–289 (1993).
30. Liu, P. *et al.* Photochemical route for synthesizing atomically dispersed palladium catalysts. *Science* **352**, 797–800 (2016).
31. Panpranot, J., Kontapakdee, K. & Praserthdam, P. Effect of TiO₂ crystalline phase composition on the physicochemical and catalytic properties of Pd/TiO₂ in selective acetylene hydrogenation. *J. Phys. Chem. B* **110**, 8019–8024 (2006).
32. Baylet, A. *et al.* *In situ* Raman and *in situ* XRD analysis of PdO reduction and Pd⁰ oxidation supported on γ -Al₂O₃ catalyst under different atmospheres. *Phys. Chem. Chem. Phys.* **13**, 4607–4613 (2011).
33. Zhou, W. & Lee, J. Y. Particle size effects in Pd-catalyzed electrooxidation of formic acid. *J. Phys. Chem. C* **112**, 3789–3793 (2008).
34. Zhu, B. & Jang, B. W.-L. Insights into surface properties of non-thermal RF plasmas treated Pd/TiO₂ in acetylene hydrogenation. *J. Mol. Catal. A: Chem.* **395**, 137–144 (2014).
35. Di Gregorio, F. *et al.* Characterization of well faceted palladium nanoparticles supported on alumina by transmission electron microscopy and FT-IR spectroscopy of CO adsorption. *Appl. Catal. A: Gen.* **352**, 50–60 (2009).
36. Padilla, J., Del Angel, G. & Navarrete, J. Improved Pd/ γ -Al₂O₃-Ce catalysts for benzene combustion. *Catal. Today* **133**, 541–547 (2008).
37. Yudanov, I. V. *et al.* CO adsorption on Pd nanoparticles: Density functional and vibrational spectroscopy studies. *J. Phys. Chem. B* **107**, 255–264 (2003).
38. Rupprechter, G. *et al.* Sum frequency generation vibrational spectroscopy at solid-gas interfaces: CO adsorption on Pd model catalysts at ambient pressure. *Surf. Sci.* **502**, 109–122 (2002).
39. Wang, X., Wu, G., Guan, N. & Li, L. Supported Pd catalysts for solvent-free benzyl alcohol selective oxidation: Effects of calcination pretreatments and reconstruction of Pd sites. *Appl. Catal. B: Environ.* **115**, 7–15 (2012).
40. Yang, K., Chen, X., Guan, J. & Liang, C. Nickel silicides prepared from organometallic polymer as efficient catalyst towards hydrogenation of phenylacetylene. *Catal. Today* **246**, 176–183 (2015).
41. Karakhanov, E. A. *et al.* Ultra-low palladium catalysts for phenylacetylene semihydrogenation: Synthesis by modified pulsed laser ablation-deposition. *Appl. Catal. A: Gen.* **464–465**, 253–260 (2013).
42. Li, C., Shao, Z., Pang, M., Williams, C. T. & Liang, C. Carbon nanotubes supported Pt catalysts for phenylacetylene hydrogenation: effects of oxygen containing surface groups on Pt dispersion and catalytic performance. *Catal. Today* **186**, 69–75 (2012).
43. Marín-Astorga, N., Alvez-Manoli, G. & Reyes, P. Stereoselective hydrogenation of phenyl alkyl acetylenes on pillared clays supported palladium catalysts. *J. Mol. Catal. A: Chem.* **226**, 81–88 (2005).
44. Duca, D., Liotta, L. F. & Deganello, G. Liquid phase hydrogenation of phenylacetylene on pumice supported palladium catalysts. *Catal. Today* **24**, 15–21 (1995).
45. Panpranot, J., Phandinthong, K., Sirikajorn, T., Arai, M. & Praserthdam, P. Impact of palladium silicide formation on the catalytic properties of Pd/SiO₂ catalysts in liquid-phase semihydrogenation of phenylacetylene. *J. Mol. Catal. A: Chem.* **261**, 29–35 (2007).
46. Domínguez-Domínguez, S., Berenguer-Murcia, A., Linares-Solano, A. & Cazorla-Amorós, D. Inorganic materials as supports for palladium nanoparticles: Application in the semi-hydrogenation of phenylacetylene. *J. Catal.* **257**, 87–95 (2008).
47. Azizi, M. *et al.* Study on the acetylene hydrogenation process for ethylene production: Simulation, modification, and optimization. *Chem. Eng. Commun.* **200**, 863–877 (2013).
48. Pachulski, A., Schödel, R. & Claus, P. Modeling of a Pd-Ag/Al₂O₃ catalyst during selective hydrogenation of ethyne. *Appl. Catal. A: Gen.* **445–446**, 107–120 (2012).
49. Bos, A. N. R., Botsma, E. S., Foeth, F., Sleyster, H. W. J. & Westerterp, K. R. A kinetic study of the hydrogenation of ethyne and ethene on a commercial Pd/Al₂O₃ catalyst. *Chem. Eng. Process* **32**, 53–63 (1993).
50. Wilhite, B. A., McCready, M. J. & Varma, A. Kinetics of Phenylacetylene Hydrogenation over Pt/ γ -Al₂O₃ Catalyst. *Ind. Eng. Chem. Res.* **41**, 3345–3350 (2002).
51. Aramendía, M. A. *et al.* Optimization of the selective semi-hydrogenation of phenylacetylene with supported palladium systems. *Applied Catalysis* **63**, 375–389 (1990).
52. Carturan, G., Facchin, G., Cocco, G., Enzo, S. & Navazio, G. Influence of metal dispersion on selectivity and kinetics of phenylacetylene hydrogenation catalyzed by supported palladium. *J. Catal.* **76**, 405–417 (1982).
53. Sá, J., Arteaga, G. D., Daley, R. A., Bernardi, J. & Anderson, J. A. Factors influencing hydride formation in a Pd/TiO₂ catalyst. *J. Phys. Chem. B* **110**, 17090–17095 (2006).
54. Smith, G. V. *et al.* Modified Activities and Selectivities of Silated-Oxidized-Reduced Pd and Pt Catalysts. *J. Catal.* **161**, 441–450 (1996).
55. Militello, M. C. & Simko, S. J. Elemental palladium by XPS. *Surf. Sci. Spectra* **3**, 387–394 (1994).
56. Wahlström, E. *et al.* Bonding of Gold Nanoclusters to Oxygen Vacancies on Rutile TiO₂ (110). *Phys. Rev. Lett.* **90**, 026101 (2003).
57. Thompson, T. L. & Yates, J. T. Surface science studies of the photoactivation of TiO₂ new photochemical processes. *Chem. Rev.* **106**, 4428–4453 (2006).
58. Tauster, S., Fung, S., Baker, R. & Horsley, J. Strong interactions in supported-metal catalysts. *Science* **211**, 1121–1125 (1981).

Acknowledgements

This work was supported by National Natural Science Foundation of China (No. 21376019, 21676013), Fundamental Research Funds for the Central Universities (No. YS1406), and Beijing Engineering Center for Hierarchical Catalysts.

Author Contributions

F.Z. conceived the concept, designed the experimental system and was responsible for the direction of the work. Q.F. and S.H. are the major contributors in performing experiments and writing the manuscript while L.H., X.L., Y.Z. and S.X. performed a part of measurements and participated in the analyses. All authors have read and approved the manuscript.

Additional Information

Competing financial interests: The authors declare no competing financial interests.

How to cite this article: Fan, Q. *et al.* Photodeposited Pd Nanoparticles with Disordered Structure for Phenylacetylene Semihydrogenation. *Sci. Rep.* **7**, 42172; doi: 10.1038/srep42172 (2017).

Publisher's note: Springer Nature remains neutral with regard to jurisdictional claims in published maps and institutional affiliations.



This work is licensed under a Creative Commons Attribution 4.0 International License. The images or other third party material in this article are included in the article's Creative Commons license, unless indicated otherwise in the credit line; if the material is not included under the Creative Commons license, users will need to obtain permission from the license holder to reproduce the material. To view a copy of this license, visit <http://creativecommons.org/licenses/by/4.0/>

© The Author(s) 2017