

SCIENTIFIC REPORTS



OPEN

Influence of *FKBP5* polymorphism and DNA methylation on structural changes of the brain in major depressive disorder

Kyu-Man Han^{1,*}, Eunsoo Won^{1,*}, Youngbo Sim², June Kang³, Changsu Han⁴, Yong-Ku Kim⁴, Seung-Hyun Kim⁵, Sook-Haeng Joe⁵, Min-Soo Lee¹, Woo-Suk Tae² & Byung-Joo Ham^{1,2}

Received: 04 May 2016
Accepted: 13 January 2017
Published: 15 February 2017

A single nucleotide polymorphism of rs1360780 in the *FKBP5* gene is associated with a predisposition to developing major depressive disorder (MDD). We investigated the interactive effects of *FKBP5* rs1360780 allelic variants, DNA methylation, and the diagnosis of MDD on structural changes of the entire brain. One hundred and fourteen patients with MDD and eighty-eight healthy controls underwent T1-weighted structural magnetic resonance imaging and *FKBP5* rs1360780 genotyping, including DNA methylation of intron 7. We analyzed the volume of cortical and subcortical regions and cortical thickness using FreeSurfer. Significant genotype-by-diagnosis interactions were observed for volumes of the left pars triangularis, supramarginal gyrus, superior parietal lobule, right frontomarginal, and posterior midcingulate gyrus. The T allele was associated with significant volume reductions in these brain regions only in the MDD group except for the right posterior midcingulate gyrus. *FKBP5* DNA methylation showed a positive correlation with the thickness of the right transverse frontopolar gyrus in the C allele homozygote group. Our findings suggest that the *FKBP5* gene and its epigenetic changes could have influence on morphologic changes of several brain regions involved in emotion regulation, and that this process may be associated with the development of MDD.

The etiology of major depressive disorder (MDD) is characterized by a complex interplay between multiple genes and environmental factors¹. A recent genome-wide association study reported two genome-wide significant loci contributing to predisposition to MDD². Genetic variations involving monoaminergic neurotransmission³, neuroplasticity^{4,5}, or the hypothalamic–pituitary–adrenal (HPA) axis⁶ influence structural and functional alterations of the neural network in patients with MDD. Accumulating evidence suggests that dysregulation of the HPA axis and stress/cortisol responsivity influences the predisposition to MDD^{6,7} and structural changes in brain regions involved in HPA axis regulation, such as the hippocampus and amygdala^{8–10}. Several genetic variants are thought to be involved in the disturbed stress-regulatory hormonal system in MDD^{8,11}.

The *FKBP5* gene encodes FK506 binding protein 51 (FKBP5), which is highly expressed after stress exposure, and the inhibitory role of FKBP5 in glucocorticoid receptor activity provides an ultra-short negative feedback loop for stress-induced increases in plasma cortisol¹². It has been suggested that the rs1360780 risk allele of the *FKBP5* gene is associated with greater induction of FKBP5 by cortisol, compared to the non-risk allele¹³. The sequence containing the risk (T) allele leads to overexpression of FKBP5 following glucocorticoid receptor activation and dysregulated negative feedback on the stress-hormone system, with prolonged cortisol release after stress exposure¹⁴. Recent studies on *FKBP5* rs1360780 have suggested that the T allele is associated with a predisposition to MDD¹⁵. It has also been suggested that exposure to childhood trauma interacts with the T allele and leads to epigenetic changes, such as a reduced methylation of a second glucocorticoid response element located in

¹Department of Psychiatry, Korea University Anam Hospital, Korea University College of Medicine, Seoul, Republic of Korea. ²Brain Convergence Research Center, Korea University Anam Hospital, Seoul, Republic of Korea. ³Department of Biomedical Sciences, Korea University College of Medicine, Seoul, Republic of Korea. ⁴Department of Psychiatry, Korea University Ansan Hospital, Korea University College of Medicine, Seoul, Republic of Korea. ⁵Department of Psychiatry, Korea University Guro Hospital, Korea University College of Medicine, Seoul, Republic of Korea. *These authors contributed equally to this work. Correspondence and requests for materials should be addressed to W.-S.T. (email: wstae@korea.ac.kr) or B.-J.H. (email: hambj@korea.ac.kr)

intron 7 of the gene¹⁶. This results in an even stronger transcriptional activation of FKBP5 and disturbances to the HPA axis in addition to influencing the development of stress-related psychiatric disorders¹⁶.

Previous imaging studies on *FKBP5* rs1360780 have mainly investigated functional and structural alterations in the hippocampus or amygdala^{8,11,17,18}. Recent evidence has suggested that dysregulation of the HPA axis in patients with MDD could cause structural changes to the cortico-limbic network involved in emotion regulation in regions other than the hippocampus or amygdala, such as the orbitofrontal cortex (OFC)¹⁹ or anterior cingulate cortex (ACC)²⁰. Elevated transcript and protein levels of FKBP5 in the frontal cortex have been correlated with MDD in HIV-infected patients²¹, and *FKBP5* mRNA expression has been detected in various brain regions including the cerebral cortex in the adult mouse²². This evidence has led to investigations on the influence of the *FKBP5* genetic variant on structural changes of the entire brain, including the cortico-limbic network in MDD. However, few studies conducted on patients with MDD have explored the association between the rs1360780 allelic variant and structural changes of brain regions other than the hippocampus or amygdala. One study investigated structural changes to the whole brain of patients with MDD influenced by *FKBP5* genotype; however, this study only investigated microstructural changes of white matter tracts²³. Also, although another study explored the effects of rs1360780 on cortical volume and integrity of white matter tracts throughout the brain, the study sample was drawn from a non-clinical population²⁴.

A study by Hühne *et al.* has reported that a lifetime history of MDD and rs1360780 have significant interaction effects on epigenetic changes of intron 7 in the *FKBP5* gene²⁵. Epigenetic changes to the *FKBP5* gene have come into the spotlight due to their involvement in the pathophysiology of psychiatric disorders^{12,26}. However, there are as yet no brain imaging studies on *FKBP5* DNA methylation and MDD. Additionally, a recent meta-analysis with a large sample indicates that patients with MDD have thinner cortical gray matter in the OFC, the anterior and posterior cingulate, the insula, and the temporal lobe, and suggests that cortical thickness changes in MDD are robustly detectable findings²⁷. Thus, there is an increased need for a comprehensive approach to elucidate the influence of *FKBP5* rs1360780 and DNA methylation on changes in cortical volumes and thickness of the entire brain in patients with MDD.

In this study, we aimed to investigate the interactive effects among *FKBP5* rs1360780 allelic variants, DNA methylation, and diagnosis of MDD on volume changes in cortical and subcortical regions of the entire brain and on cortical thickness. Our *a priori* hypotheses were as follows: 1) Significant interactive effects between *FKBP5* rs1360780 genotype and MDD diagnosis on gray matter volume and/or cortical thickness reductions in the cortico-limbic network will be observed. 2) Significant correlations between DNA methylation and gray matter volume and/or cortical thickness in the cortico-limbic network according to *FKBP5* rs1360780 risk allele and/or diagnosis of MDD will be observed.

Results

Demographic and genotype characteristics. Age, gender, education level, the 17-item Hamilton Depression Rating Scale (HDRS) score, duration of illness, allelic variant of *FKBP5* rs1360780, and the proportion of drug-naïve patients according to genotype are shown in Table 1. There were no significant differences between the two groups except for the HDRS score ($t_{(200)} = 15.973$, $P < 0.001$).

***FKBP5* rs1360780 genotype and gray-matter volumes and cortical thickness.** We observed a significant genotype-by-diagnosis interaction in the volumes of the left pars triangularis ($F_{(1, 201)} = 11.074$, FDR-corrected P ($P_{\text{corr}} = 0.027$), the supramarginal gyrus ($F_{(1, 201)} = 11.832$, $P_{\text{corr}} = 0.027$), the superior parietal lobule ($F_{(1, 201)} = 14.179$, $P_{\text{corr}} = 0.017$), the right posterior midcingulate ($F_{(1, 201)} = 9.158$, $P_{\text{corr}} = 0.043$), and the frontomarginal gyrus ($F_{(1, 201)} = 9.508$, $P_{\text{corr}} = 0.043$), as shown in Table 2 and Fig. 1. However, we could not find significant genotype or diagnosis effects in the above-mentioned cortical regions, which had significant diagnosis-by-genotype interactions (all $p > 0.1$, Table S3).

In the post-hoc analysis of gray matter volumes with significant diagnosis-by-genotype interactions after FDR correction ($P_{\text{corr}} < 0.05$), we found that T allele carriers (TT or CT genotype) had smaller volumes in the left pars triangularis ($F_{(1, 113)} = 9.353$, uncorrected P ($P_{\text{uncorr}} = 0.003$), the supramarginal gyrus ($F_{(1, 113)} = 11.172$, $P_{\text{uncorr}} = 0.001$), the superior parietal lobule ($F_{(1, 113)} = 14.819$, $P_{\text{uncorr}} < 0.001$), and the right frontomarginal gyrus ($F_{(1, 113)} = 9.815$, $P_{\text{uncorr}} = 0.002$) compared to C allele homozygotes in the MDD group, while no significant differences between genotypes were observed in the healthy control group (Fig. 2 and Table S4). In contrast to the above findings, T allele carriers had an increased volume in the right posterior midcingulate gyrus ($F_{(1, 87)} = 5.113$, $P_{\text{uncorr}} = 0.026$) compared to C allele homozygotes in the healthy control group, while no significant differences were observed in the MDD group (Fig. 2 and Table S4). Post-hoc analyses of cortical volume and thickness in regions with significant diagnosis-by-genotype interactions without FDR corrections ($P_{\text{uncorr}} < 0.05$) are shown in Tables S5–S7.

We observed a significant genotype effect on the volume of the right subcentral gyrus. In all participants in both the MDD and the healthy control group, T allele carriers had smaller volumes ($F_{(1, 201)} = 19.996$, $P_{\text{corr}} = 0.001$) compared to C allele homozygotes (Table 2 and Fig. 1). However, we could not find a significant genotype effect on cortical thickness or subcortical volume (Table S3).

Patients with MDD had a trend for a thinner cortex in the right anterior cingulate gyrus ($F_{(1, 201)} = 11.909$, $P_{\text{corr}} = 0.052$; Table S3). We found no significant diagnosis effect in our cortical volume analysis (Table S3). We also could not find any significant effects for diagnosis, genotype, or their interaction in the analysis of subcortical volume, as shown in Table S3.

The DNA methylation of the *FKBP5* gene and gray-matter volumes and cortical thickness. The DNA-methylation percentage of the two CpGs did not differ between the diagnostic groups (MDD vs. healthy controls) or genotype groups (CC vs. CT + TT). There was no significant diagnosis-by-genotype interaction for

	MDD (n = 114)	HC (n = 88)	p value
Age	43.51 ± 12.0	39.89 ± 14.05	0.055
Gender (female)	90	61	0.142
Education level			
Elementary and middle school	27	13	0.117
High school or college/university	80	64	
Above graduate school	7	11	
HDRS-17 score	14.81 ± 8.02	2.27 ± 2.10	<0.001
Duration of illness (months)	45.18 ± 47.47		
<i>FKBP5</i> gene rs1360780			
CC	72	58	0.725
CT	39	29	
TT	3	1	
HWE	0.394	0.204	
CC	72	58	0.767
CT + TT	42	30	
Drug-naïve/Antidepressant	53/61		
CC	32/40		0.697
CT + TT	21/21		
Antidepressant type			
SSRI	30		
SNRI	10		
NDRI	6		
NaSSA	4		
Combination	11		

Table 1. Demographic and clinical characteristics of patients with major depressive disorder and healthy controls. Data represent mean ± standard deviation for age, HDRS-17 scores, and duration of illness. The p values for distributions of gender, education level, *FKBP5* genotype, and drug-naïve patients according to the genotype were obtained by chi-square test. The p values for comparisons of age and HDRS-17 scores were obtained by independent t-test. Allele frequencies (C/T): MDD patients 0.80/0.20, HC subjects 0.82/0.18. MDD, major depressive disorder; HC, healthy controls; HDRS-17, Hamilton Depression Rating Scale; HWE, Hardy-Weinberg equilibrium; SSRI, selective serotonin reuptake inhibitor; SNRI, serotonin and norepinephrine reuptake inhibitor; NDRI, norepinephrine-dopamine reuptake inhibitor; NaSSA, noradrenergic and specific serotonergic antidepressant; Combination, combinations of two or more types of antidepressant.

the DNA-methylation percentage of the two CpGs. We observed that the T allele was associated with a reduced methylation of the CpG in pos 1 ($F = 4.812$, $P = 0.032$) only in the MDD group. The details are described in Tables S8 and S9.

Significant correlations between methylation and volume or cortical thickness are summarized in Table 3 and Fig. 3. In a combined sample of the MDD patient group and healthy control group, C homozygous individuals showed a significant positive correlation between CpG methylation in pos 1 and thickness of the right transverse frontopolar gyrus ($r = 0.353$, $P_{\text{corr}} = 0.040$), and the covariate effect of diagnosis was significant in this correlation ($P = 0.002$). In the post-hoc analysis, we analyzed the correlations between CpG methylation in pos 1 and right transverse frontopolar gyrus thickness in each diagnostic group within the C homozygote group, and observed positive correlations in each diagnostic group at a non-significant level (C homozygous MDD patient group: $r = 0.293$, $P_{\text{uncorr}} = 0.023$, $P_{\text{corr}} > 0.05$; C homozygous healthy control group: $r = 0.371$, $P_{\text{uncorr}} = 0.009$, $P_{\text{corr}} > 0.05$, Fig. 3). We also observed that DNA methylation did not show any interactions with diagnosis, genotype, and both diagnosis and genotype in terms of the correlations with structural MRI measures (all, $P_{\text{corr}} > 0.05$). The details are described in Tables S10–S12.

Discussion

Our investigation firstly demonstrated that *FKBP5* rs1360780 genotype and MDD diagnosis have significant interactive effects on gray-matter volumes of several brain regions including the pars triangularis, frontomarginal gyrus, supramarginal gyrus, superior parietal lobule, and posterior midcingulate gyrus. We also found an allele-specific positive correlation of the *FKBP5* gene DNA methylation with thickness of the transverse frontopolar gyrus.

Structural alterations of the above-mentioned cortical regions have been reported in previous imaging studies on MDD. Gray matter volume reduction in the ventrolateral prefrontal cortex (VLPFC), which includes the pars triangularis of the inferior frontal gyrus, was reported in a pooled meta-analysis of 14 neuroimaging studies in medication-naïve patients with MDD²⁸. The frontomarginal gyrus is a part of the OFC^{29,30}. Volume reductions of the OFC in MDD are also reported by several meta-analyses of volumetric studies in patients with MDD^{31,32}. The

Brain regions	MDD (n = 114) vs. HC (n = 88)			CC (n = 130) vs. CT + TT (n = 72)			Diagnosis × Genotype interaction			
	F	P _{uncorr}	P _{corr}	F	P _{uncorr}	P _{corr}	F	P _{uncorr}	P _{corr}	
<i>cortical volume</i>										
L pars triangularis	1.387	>0.1	>0.1	1.223	>0.1	>0.1		11.074	0.001*	0.027*
L supramarginal gyrus	0.059			2.391				11.832	0.001*	0.027*
L superior parietal lobule	0.896			2.704				14.179	<0.001*	0.017*
R posterior mid-cingulate gyrus	0.089			0.027				9.158	0.003*	0.043*
R frontomarginal gyrus	1.337			0.935				9.508	0.002*	0.043*
R subcentral gyrus	0.367			19.996			<0.001*	0.001*	CC > CT + TT	1.395

Table 2. Summary of differences in volume and thickness of various brain regions among groups determined by genotype and diagnosis. The F and uncorrected P values were obtained using analysis of covariance (ANCOVA) adjusted for age, gender, education level, medication, and total intracranial volume as covariates. Only brain regions with significant difference or interaction after the multiple comparison correction are shown. The False Discovery Rate (FDR) was applied in each analysis for multiple comparison correction, $q < 0.05$; cortical volume: 76 comparisons in both hemispheres; cortical thickness: 76 comparisons in both hemispheres; subcortical volume: 14 comparisons in both hemispheres. *Regions that remained significant after the multiple comparison correction are marked with an asterisk. MDD, major depressive disorder; HC, healthy controls; CC, CC genotype of rs1360780; CT + TT, CT or TT genotype of rs1360780; L, left hemisphere; R, right hemisphere; P_{uncorr}, uncorrected P-value; P_{corr}, FDR-corrected P-value.

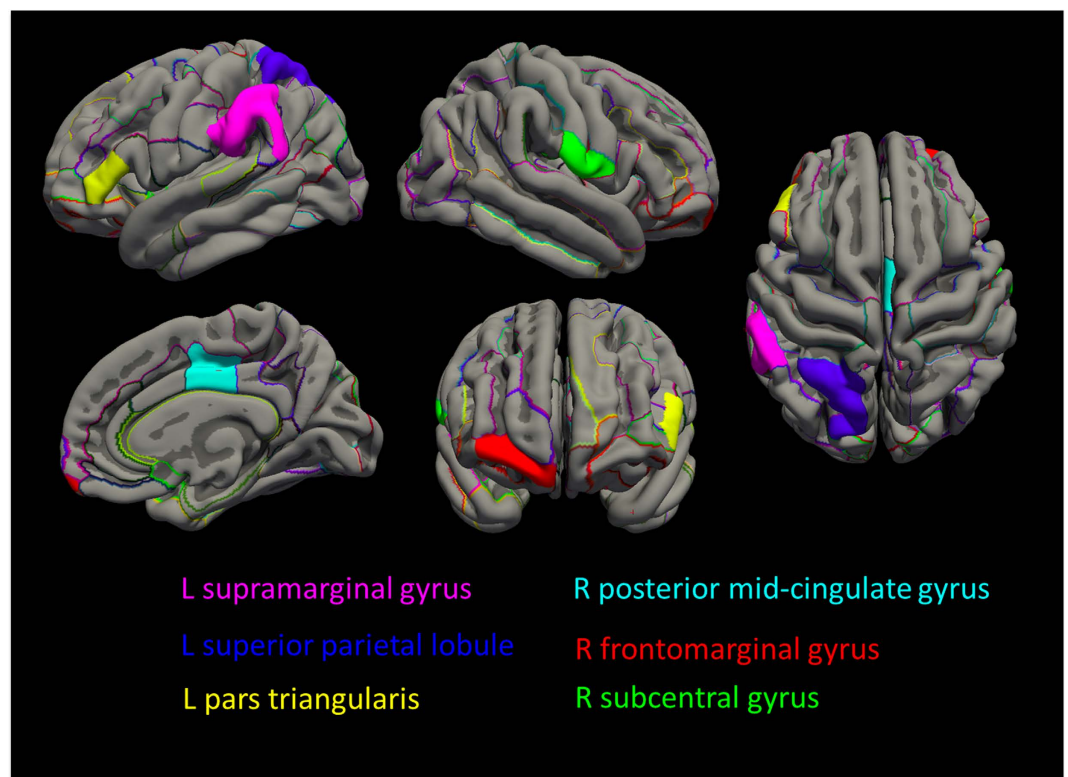


Figure 1. Schematic maps on the cortical regions with significant genotype-by-diagnosis interaction or genotype effect. The cortical parcellation criteria of the Destrieux atlas was applied. The significant interactive effect of the *FKBP5* rs1360780 genotype and major depressive disorder (MDD) diagnosis was observed in left pars triangularis (P_{corr} = 0.027), supramarginal gyrus (P_{corr} = 0.027), superior parietal lobule (P_{corr} = 0.017), and right frontomarginal (P_{corr} = 0.043) and posterior midcingulate gyrus (P_{corr} = 0.043). In all participants of both the MDD and healthy control groups, T allele was associated with a smaller volume in the right subcentral gyrus among the total participants (P_{corr} = 0.001) (R, right hemisphere; L, left hemisphere).

posterior midcingulate and dorsal posterior cingulate gyri are adjacent subdivisions of the cingulate cortex and share similar functions^{33,34}. Cortical thinning or gray matter volume changes in these two cortical regions have been reported in patients with MDD^{35–38}. Reduced cortical volume³⁹ and cortical thinning⁴⁰ of the supramarginal

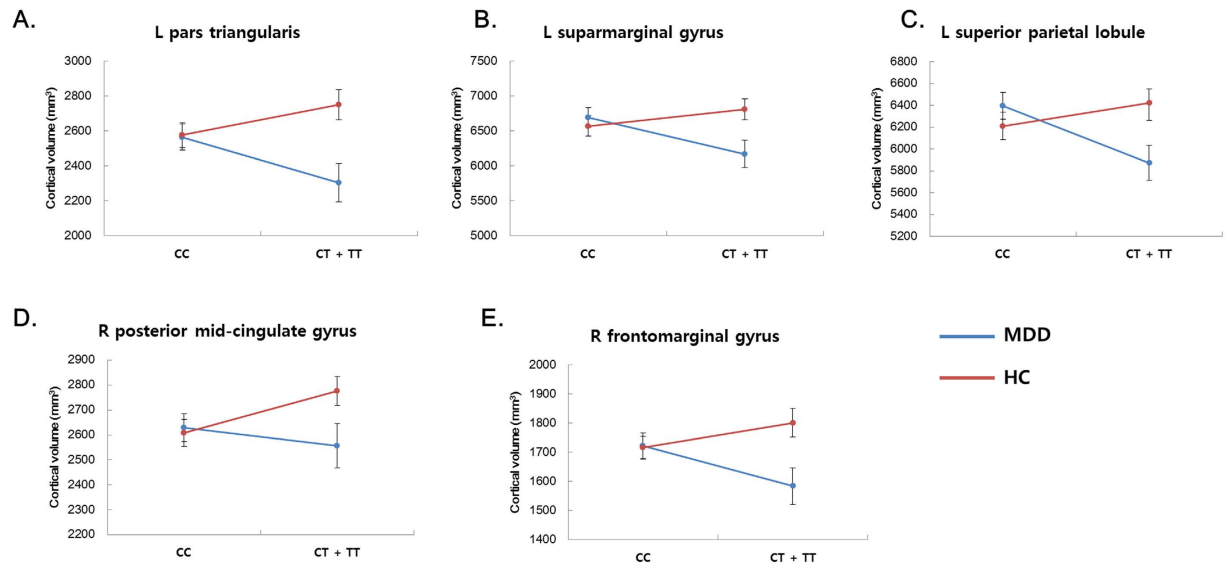


Figure 2. Interaction plot of the cortical volumes with significant diagnosis-by-genotype interactions. (Panel A = left pars triangularis, panel B = left supramarginal gyrus, panel C = left superior parietal lobule, panel D = right posterior midcingulate gyrus, panel E = right frontomarginal gyrus; MDD, major depressive disorder; HC, healthy controls; CC, CC genotype of rs1360780; CT + TT, CT or TT genotype of rs1360780; L, left hemisphere; R, right hemisphere; error bars represent the standard error of the mean).

Subgroups	Brain regions	r	P _{uncorr}	P _{corr}	CpG
<i>cortical thickness</i>					
CC (n = 118)	R transverse frontopolar gyrus	0.353	<0.001	0.040	pos 1

Table 3. Summary of correlation analyses among gray-matter volumes or cortical thickness and DNA methylation in intron 7 of the *FKBP5* gene among groups determined by diagnosis and genotype. A two-tailed Pearson's partial correlation was performed to analyze the correlations of *FKBP5* gene DNA methylation with cortical gray-matter volumes or thickness adjusting for age, gender, education level, medication, total intracranial cavity volume, *FKBP5* genotype (only included in the analyses of MDD or HC groups), and diagnosis (only included in the analyses of T allele carrier or C homozygote groups). A hierarchical moderated regression analysis was performed to investigate the interactive effect of the DNA methylation with the diagnosis, genotype, or both diagnosis and genotype in terms of the correlation with the cortical gray-matter volumes or thickness. Only regions with significant correlations after multiple comparison correction are shown. The False Discovery Rate (FDR) was applied in each analysis for multiple comparison correction, $q < 0.05$; for cortical gray-matter volumes or thickness in the analysis of diagnostic effect (MDD or HC group): 304 comparisons (=38 cortical regions \times 2 hemispheres \times 2 diagnostic groups \times 2 CpG sites); genotype effect (T allele carrier or C homozygote group): 304 comparisons (=38 cortical regions \times 2 hemispheres \times 2 genotype groups \times 2 CpG sites); and interactive effects: 456 comparisons (=38 cortical regions \times 2 hemispheres \times 3 interactions \times 2 CpG sites); for subcortical volumes in the analysis of diagnostic effect: 56 comparisons (=7 subcortical regions \times 2 hemispheres \times 2 diagnostic groups \times 2 CpG sites); genotype effect: 56 comparisons (=7 subcortical regions \times 2 hemispheres \times 2 genotype groups \times 2 CpG sites); and interactive effects: 84 comparisons (=7 subcortical regions \times 2 hemispheres \times 3 interactions \times 2 CpG sites). MDD, major depressive disorder; HC, healthy control; CC, participants with CC genotype of rs1360780; R, right hemisphere; P_{uncorr}, uncorrected P value; P_{corr}, FDR-corrected P-value.

gyrus has been reported in patients with MDD in previous studies. In addition, reduced cortical gray matter volume of the superior parietal region has been reported in patients with MDD⁴¹.

We observed a trend for a thinner cortex in the anterior cingulate gyrus, which is consistent with results of a recent meta-analysis by Schmaal *et al.*²⁷, who reported that adult patients with MDD have thinner cortices in the anterior and posterior cingulate cortex and the medial and lateral OFC compared to healthy controls. We also found thinner cortices in the straight, orbital, and ventral posterior cingulate gyri, but only when using uncorrected statistics (Table S3). However, gray matter volumes with significant diagnosis-by-genotype interactions, including the superior parietal lobule, the supramarginal gyrus, the posterior midcingulate gyrus, the frontomarginal gyrus, and the pars triangularis did not have significant volume changes as an effect of diagnosis or genotype. Our negative findings regarding the effects of MDD on cortical volume are inconsistent with the results of a recent meta-analysis on voxel-based morphometry with a large sample, which reported decreased cortical volumes in the insula, the ventromedial prefrontal cortex, and the anterior and posterior cingulate cortices

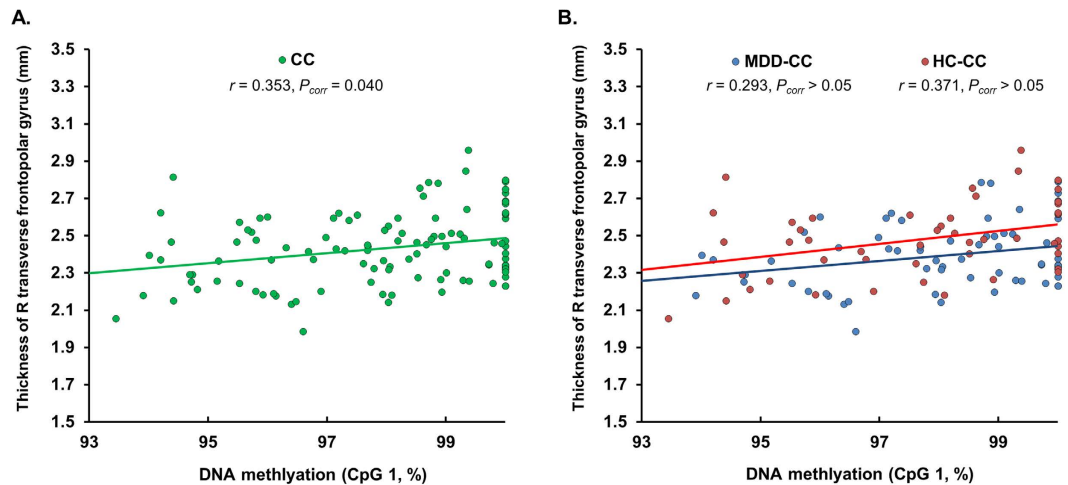


Figure 3. The graphs indicate a significant positive correlation between the percentage of DNA methylation in CpG 1 in intron 7 of the *FKBP5* gene and cortical thickness. Panel A indicates the positive correlation between methylation status and cortical thickness of the right transverse frontopolar gyrus in C homozygote individuals ($r = 0.353$, $P_{\text{corr}} = 0.040$). Panel B represents the post-hoc analysis of the correlations in each diagnostic group within the C homozygote group (C homozygous MDD patient group: $r = 0.293$, $P_{\text{corr}} > 0.05$; C homozygous HC group: $r = 0.371$, $P_{\text{corr}} > 0.05$). Trend lines (green, C homozygote group; blue, C homozygous MDD patient group; red, C homozygous HC group) obtained from bivariate linear regression analyses are presented in the graphs. The Correlation analysis was performed using a two-tailed Pearson's partial correlation adjusted for age, gender, education level, medication, diagnosis, and total intracranial cavity volume. No significant correlations were observed in the other brain regions or subgroups. (MDD, major depressive disorder; HC, healthy control; CC, C allele homozygous individuals; MDD-CC, C allele homozygous patients with MDD; HC-CC, C allele homozygous healthy controls).

in patients with MDD patients⁴². We believe that this may weaken our conclusion that there is an association between brain structural changes and *FKBP5* genotype.

In the dysfunctional cortico-limbic network model of depression, top-down inhibitory regulation of negative emotion originating in the amygdala, the ventral striatum, and the thalamus is carried out by the lateral part of the prefrontal cortex (PFC), which includes the dorsolateral prefrontal cortex (DLPFC) and the VLPFC, through cognitive and voluntary emotional control^{1,43}. In addition, the medial part of the PFC, which includes the OFC, the ACC, and the ventromedial PFC, is involved in this process through automatic and implicit emotional control^{1,43}. These voluntary and automatic regulatory sub-processes of emotion are carried out simultaneously in the reappraisal of emotional context and the generation of emotion⁴³. Thus, dysfunction in the normal top-down regulation of these two sub-processes induces overwhelming feelings of negative emotion and eventual depressive mood⁴³. The pars triangularis, which is involved in speech production and is activated during semantic processing⁴⁴, is a sub-region of the VLPFC. Abnormal activity of the VLPFC during the cognitive control of negative emotional stimuli or during affective tasks, has been reported in youths⁴⁵ and adults with MDD⁴³. Abnormal resting-state activity of the frontomarginal gyrus has been suggested by fMRI studies on MDD^{46,47}. In addition, the posterior midcingulate and dorsal posterior cingulate gyri are involved in the modulation of negative affect³³, the emotional processing of aversive social stimuli⁴⁸, and emotional regulation via cognitive reappraisal⁴⁹. Our observation of significant interactive effects between *FKBP5* genotype and MDD diagnosis in the above-mentioned cortical regions indicates that the *FKBP5* gene may be associated with structural changes of neural circuits related to emotional control and mood regulation in MDD, and is relevant to our *a priori* hypothesis.

The study by Tozzi *et al.*²³, using fMRI data and diffusion tensor images (DTIs), supports our observation of significant interactive effects on pars triangularis, frontomarginal gyrus, superior parietal lobule, and posterior midcingulate gyrus. They showed that in their fMRI analysis, rs1360780 and the diagnosis of MDD had significant interactive effects on OFC and superior parietal lobule, and MDD patients with T allele demonstrated decreased activity during geometrical trials in pars triangularis, and during an emotional task in the posterior cingulate cortex compared with homozygous C patients. They also observed that in their analysis on DTIs, the mean diffusivity of pars triangularis is increased in the patients with T allele compared with homozygous C patients, which reflects axonal degeneration and demyelination in that region. Another study by Fujii *et al.*²⁴, investigating the association of rs1360780 with gray-matter volume change in a non-clinical Japanese population, found that T allele carriers had a significant volume reduction in the left posterior cingulate region compared to non-T allele carriers. Even though the result of Fujii *et al.* is limited to a non-clinical population, we guardedly think that this too could support our observation of genotype-by-diagnosis interaction and T-allele associated volume reduction in the posterior midcingulate gyrus.

Considering the previously reported association of heightened HPA-axis activity and hypercortisolemia with gray-matter volume reduction or thinning of several cortical regions, including PFC, OFC, and ACC in MDD^{19,20,50}, the interactive effects of genotype and diagnosis on structural brain changes in our study are

congruent with the suggestion that the T allele is associated with a prolonged increase in cortisol levels and impaired negative feedback on the HPA axis^{12,17}. However, measurements of HPA-axis activity are lacking in our study, and the mediating effect of disturbed HPA-axis function on structural brain changes in MDD patient with T allele might be presumptive. Future studies are required to elucidate the neurobiological mechanisms underlying this issue.

Allele-specific epigenetic modifications of intron 7 of the *FKBP5* gene have been suggested by Klengel *et al.*¹⁶. We however could not find any significant diagnosis-by-genotype interactions or genotype effects on the percentage of DNA methylation. This negative finding may weaken our conclusion that epigenetic changes to *FKBP5* are correlated with brain structural changes according to genotype or the diagnosis of MDD. In our exploratory analysis, we found that only the T allele is associated with reduced methylation of one CpG locus and only in the MDD group. We observed no significant differences in methylation according to genotype in the healthy control group. This finding may be consistent with reports by Klengel *et al.* that interactive effects between the T allele and childhood trauma are associated with reduced *FKBP5* DNA methylation¹⁶. However, this study focused on traumatized individuals rather than patients with MDD, thus, we can only postulate from the results of this study, the association between the T allele and reduced methylation in MDD. Another study on this issue by Höhne *et al.* suggested that remitted patients with MDD showed a non-significant trend of increased methylation compared to healthy controls only in the T allele homozygote group other than the CC or CT groups²⁵, and this finding is inconsistent with our observation. We cannot provide the exact neurobiological background of this difference, however, we suspect that the discrepancy in sample size (MDD patients, $n = 61$; healthy controls, $n = 55$ in Höhne *et al.*²⁵) may have had influence on such difference. We believe that further studies are required to elucidate the associations among *FKBP5* genotype, methylation and MDD, as there is limited evidence on this issue. According to previous suggestions^{12,16}, T-allele-specific reduced methylation is associated with the development of psychiatric disorders. Considering the numerous reports on thinning of several brain regions related to the cortico-limbic network in MDD²⁷, a positive correlation between cortical thickness and DNA methylation in the MDD patient group or T-allele carrier group could be expected. However we observed a positive correlation only in the C homozygote group. We could not clearly explain why a positive correlation between methylation and cortical thickness of the right transverse frontopolar gyrus was present in C allele homozygous participants rather than in T-allele carriers or patients with MDD. This highlights the need for further studies to elucidate the exact neurobiological background of our observations.

In this study, we determined both cortical volume and thickness as intermediate phenotypes of the *FKBP5* gene, based on the cumulative evidences that these two brain structural parameters could be influenced by various genetic candidates involved in the pathophysiology of MDD³. Both alterations in cortical volume and thickness reflect brain morphologic changes related with MDD^{27,42}, and there have even been several neuroimaging studies simultaneously investigating changes in both parameters in patients with MDD^{51,52}. As cortical volume is influenced both by cortical thickness and surface area⁵³, we followed up our positive results on cortical volume by exploring the effects on (regional) cortical surface area, again using the Destrieux atlas as implemented in FreeSurfer software and using the same statistical models. After multiple test correction, we found no significant results in both the genotype and methylation related analyses (Tables S13 and S14). Yet, we observed that in 5 of 6 regions for which significant diagnosis-by-genotype interactions or genotype effects on gray-matter volume had been detected, there were at least nominally effects on surface area (Table S13). We suspect that our volumetric abnormalities in interaction of *FKBP5* genotype and MDD might be attributed to a combination of cortical thickness and area abnormalities.

To our knowledge, our study is the first to investigate the associations of *FKBP5* rs1360780 variants and DNA methylation with cortical and subcortical gray-matter volumes and cortical thickness with regard to MDD. The sample size of this study was relatively large compared to recent genetic imaging studies of the *FKBP5* gene^{18,23,54,55}. Although our study has multiple strengths, there are several limitations to consider. First, approximately 53.5% of our MDD patients were taking antidepressants, and several studies have reported relationships between brain structural changes and antidepressant treatments^{56–58}. However, we have adjusted for antidepressant use by including it as a covariate in all statistical analyses. There was no significant difference in the proportion of genotype subgroups (CC vs. T allele carrier) between medicated and drug-naïve patients with MDD (Table 1), and antidepressant treatment did not influence methylation of the *FKBP5* gene in our study (Table S15). Second, we have postulated that the influence of *FKBP5* genetic variants and epigenetic modifications on structural brain changes is mediated by disturbances in the HPA axis and its influence on the brain. However, we did not investigate HPA-axis activity in our participants by measuring plasma cortisol or adrenocorticotropic hormone (ACTH). Thus, we could not elucidate a clear causal relationship between these genetic or epigenetic markers and morphological brain changes in MDD. Third, even though there has been an emphasis on the interactions between *FKBP5* genetic variant, epigenetic changes, and childhood trauma¹⁵, we did not assess childhood trauma in the participants. With regard to volume reductions in MDD patients with the T allele, we could not clearly differentiate whether rs1360780 interacted with diagnosis-specific effects or childhood trauma, considering the high prevalence of childhood trauma in MDD patients. We also could not determine the mediating or moderating effects of childhood adversity on the relationship between DNA methylation status and structural brain alterations from our findings. Finally, we could not find an association between genotypic distribution of rs1360780 and predisposition to MDD. However, this study demonstrated a significant association between the risk allele and structural alterations in neural networks of emotion processing in patients with MDD. Furthermore, previous imaging genetic studies on *FKBP5* rs1360780 also did not detect any differences in genotypic distribution between MDD and healthy control groups²³. Our findings may provide evidence that allelic variants of rs1360780 could influence brain morphologic changes related to the pathophysiology of MDD.

In summary, we have demonstrated that the *FKBP5* rs1360780 genotype and MDD have interactive effects on gray-matter volumes of several cortical regions involved in emotion processing and mood regulation, and that

epigenetic changes to *FKBP5* are correlated with cortical thickness according to *FKBP5* genotype. We hope that our findings will provide additional neurobiological evidence for the influence of the *FKBP5* gene on structural brain changes in patients with MDD.

Method

Participants. A total of one hundred and fourteen patients diagnosed with MDD were recruited from the outpatient psychiatric clinic of Korea University Anam Hospital, located in Seoul, Republic of Korea. We included adults diagnosed with MDD, aged 20–69 years. The diagnosis of MDD was made by a board-certified psychiatrist based on the DSM-IV criteria, and confirmed by an independent psychiatrist using the Structured Clinical Interview for DSM-IV Axis I disorders (SCID-I). Their concordance for the diagnosis of MDD was 0.95. The exclusion criteria were as follows: (1) presumptive primary comorbid diagnosis of any other major psychiatric illness (based on DSM-IV criteria) on Axis I or Axis II, within the last 6 months; (2) MDD with psychotic features; (3) serious or unstable medical illness; (4) primary neurological illness, and (5) any contraindication for MRI. We assessed the duration of illness for MDD in an interview using the life-chart methodology. Eighty-eight healthy participants without histories of any psychiatric diagnoses were recruited as the control group through advertisements from the community. All participants in both groups were right-handed, according to the Edinburgh Handedness Test⁵⁹. The severity of depressive symptoms of the participants in both groups was evaluated on the same day as the MRI scans, using HDRS⁶⁰. At study enrollment, 61 patients with MDD were taking antidepressants, and 53 patients were medication-naïve. The details are described in Table 1. The study protocol was approved by the Institutional Review Board of Korea University Anam Hospital in accordance with the Declaration of Helsinki (revised in 2008), and all participants gave informed consent to participate in the study.

Genotyping and Methylation analysis. The *FKBP5* rs1360780 was genotyped using genomic DNA extracted from peripheral venous blood of each participant, and analyzed according to a previously described standard protocol⁶¹. Polymerase chain reactions were performed using the following primers: forward, 5'-GCCAAATTCAGGCAAAGGG-3'; and reverse, 5'-GATCAGCGGATGGTGGGAGG-3'. The genotyping success rate was above 95%. The allele frequencies (C allele/T allele) were as follows: patients with MDD 0.80/0.20, healthy controls 0.82/0.18. We divided the genotype groups based on the recessive model (comparing carriers of the risk-allele with non-risk allele homozygotes) in accordance with previous imaging studies on the *FKBP5* rs1360780^{18,23,24}. The genotype distribution and Hardy-Weinberg equilibrium of the two groups were assessed using a chi-square test (Table 1).

We performed pyrosequencing of bisulfite-treated genomic DNA for the methylation analysis of intron 7 of the *FKBP5* gene. Among the intronic regions of *FKBP5* gene, intron 7 has been most thoroughly investigated regarding the association of DNA methylation with transcriptional activation of *FKBP5*, childhood trauma, and predisposition to psychiatric disorders^{14,16,26}, thus we selected intron 7 as our target for the DNA methylation analysis. The details of the sodium bisulfite treatment and pyrosequencing method and the primer sequence are described in the supplement. Among a total of 202 participants, we performed a methylation analysis in 186 participants, as we failed to analyze the DNA methylation status of 10 MDD patients and 6 healthy controls during the bisulfite pyrosequencing process. We confirmed that there were no biases on demographic characteristics or genotypic distribution of the sample included in the methylation analysis. The detailed data on the sample are described in Table S1. The methylation percentage was calculated by averaging the degree of methylation at two CpG sites detected by pyrosequencing.

MRI data acquisition. MRI scans were acquired parallel to the anterior-commissure–posterior-commissure line using a 3.0 T Siemens Trio whole-body imaging system (Siemens Medical Systems, Iselin, NJ, USA), using 3D T1-weighted magnetization-prepared rapid gradient-echo (MP-RAGE) with the following parameters: 1900 ms repetition time, 2.6 ms echo time, 220 mm field of view, 256 × 256 matrix size, 1 mm slice thickness, 176 coronal slices without gap, 0.86 × 0.86 × 1 mm³ voxels, 16° flip angle, number of excitations = 1. After individual's MRI scanning, the artifacts of MRI system and motion were visually checked, and when the artifacts were observed, the subject's MRI was rescanned.

Image processing. The cortical and subcortical gray-matter volumes and cortical thickness were calculated using the automated procedure for volumetric measures of whole brain structures implemented in the FreeSurfer 5.3 development version (Massachusetts General Hospital, Boston, U.S., <http://surfer.nmr.mgh.harvard.edu>) from T1 imaging. We used the demeaned value for the total intracranial cavity volume (TICV) measured manually⁶² to normalize the regional brain volume.

A three-dimensional model of cortical surface reconstructions computed from T1 images was used in the FreeSurfer. Details of the technical aspects of these procedures have been described in previous publications^{63–65}. In summary, removal of non-brain tissue, automated Talairach transformation of each subject's native brain, segmentation of the volumetric structures^{64,66}, inflation of the cortical surface to an average spherical surface, intensity normalization, and automated topology correction were performed^{67,68}. The transition between gray/white matter and the pial boundary were determined by detecting the greatest shift in intensity through surface deformation. The entire cortex of each subject was then visually inspected, and data from subjects with inaccuracies in segmentation were discarded. Each hemisphere was then automatically parcellated into 74 distinct cortical regions consisting of gyri and sulci by a previously described method⁶⁹, and the volume and thickness of these cortical regions were automatically calculated. From the 74 cortical gyri and sulci, we used cortical volume and thickness data for 38 cortical gyri in the analysis of cortical volume and thickness (Table S2 and Figure S1). The subcortical volumes were also calculated using the automated segmentation algorithm, assignment of a

neuroanatomical label to each voxel, and volumetric measurement procedures implemented in the FreeSurfer. We obtained seven subcortical (thalamus, caudate nucleus, putamen, globus pallidum, hippocampus, amygdala, and nucleus accumbens) gray-matter volumes.

Statistical Analyses. We performed a comparison of cortical and subcortical gray-matter volumes and cortical thicknesses in the two diagnostic groups (patients with MDD vs. healthy controls) and in the *FKBP5* rs1360780 genotype groups (CC vs. CT + TT), and further investigated diagnosis-by-genotype interactions in our main analysis. The diagnosis-by-genotype interaction was determined to be the main outcome of our study. Automatically calculated data for the cortical and subcortical gray-matter volumes, and cortical thickness values obtained using FreeSurfer were analyzed using a two-way analysis of covariance (ANCOVA), with individual volumes and thickness as dependent variables; diagnosis and genotype as independent variables; and age, gender, education level, and medication (entered as medication status: 0 for medication-naïve patients with MDD and healthy controls, and 1 for patients with MDD on antidepressant treatment), and TICV as covariates. After the main analysis, we investigated the effects of genotype on gray matter volume or thickness in regions with significant diagnosis-by-genotype interactions within each diagnosis group (MDD and healthy control group) as a post-hoc analysis. We evaluated differences in the DNA methylation status of the two CpGs in intron 7 of the *FKBP5* gene between the diagnostic and genotype groups using an ANCOVA adjusted for age, gender, and medication. In order to investigate the correlations between the percentage of DNA methylation in intron 7 of this gene and cortical and subcortical gray-matter volumes and cortical thickness according to diagnosis and genotype, a two-tailed Pearson's partial correlation was performed separately for each group determined by diagnosis (MDD patients and healthy controls) and genotype (T allele carriers and C allele homozygotes). In the Pearson's partial correlation analysis between methylation and brain structural outcomes, age, gender, education level, medication, and TICV were adjusted as covariates. Specifically, in the correlation analysis regarding diagnostic groups, genotype (T allele carriers vs. C allele homozygotes) was included as an additional covariate to control for genotypic effects, while in the correlation analysis regarding genotype groups, diagnosis (MDD patients vs. healthy controls) was included as an additional covariate to control for diagnostic effects. We also investigated the interaction of DNA methylation with diagnosis, genotype, or both diagnosis and genotype in terms of the correlations with structural MRI measures using the hierarchical moderated regression analysis which has been used in previous psychiatric genetic studies^{70–72}. In the regression analysis, the same covariates as those used in the main analysis were included. False Discovery Rate (FDR) correction, as described by Benjamini and Hochberg⁷³, was applied to each main analysis and the methylation analysis for multiple comparisons correction ($q < 0.05$). The numbers of comparisons in the main analyses are as follows: cortical volume: 76 comparisons (=38 cortical regions \times 2 hemispheres), cortical thickness: 76 comparisons (=38 cortical regions \times 2 hemispheres); subcortical volume: 14 comparisons (=7 subcortical regions \times 2 hemispheres). The numbers of comparisons in the methylation analyses are as follows: for cortical gray-matter volumes or thickness in the analysis according to diagnostic groups: 304 comparisons (=38 cortical regions \times 2 hemispheres \times 2 diagnostic groups \times 2 CpG sites); genotype groups: 304 comparisons (=38 cortical regions \times 2 hemispheres \times 2 genotype groups \times 2 CpG sites); and interactive effects (e.g. diagnosis-by-methylation, genotype-by-methylation, diagnosis-by-genotype-by-methylation): 456 comparisons (=38 cortical regions \times 2 hemispheres \times 3 interactions \times 2 CpG sites); for subcortical volumes in the analysis according to diagnostic groups: 56 comparisons (=7 subcortical regions \times 2 hemispheres \times 2 diagnostic groups \times 2 CpG sites); genotype groups: 56 comparisons (=7 subcortical regions \times 2 hemispheres \times 2 genotype groups \times 2 CpG sites); and interactive effects: 84 comparisons (=7 subcortical regions \times 2 hemispheres \times 3 interactions \times 2 CpG sites). FDR correction was applied to each analysis of diagnostic effect, genotypic effect, and interaction effects and each brain structural outcome (cortical and subcortical gray-matter volumes and cortical thickness) separately in the main and methylation analyses. To analyze group differences due to demographic and clinical characteristics, age and HDRS scores were analyzed using t-tests, and the distributions of gender, education level, and drug-naïve status based on genotype were analyzed using chi-squared tests. Statistical analyses were performed using SPSS version 18.0 (SPSS Inc., Chicago, IL, USA).

References

- Kupfer, D. J., Frank, E. & Phillips, M. L. Major depressive disorder: new clinical, neurobiological, and treatment perspectives. *Lancet (London, England)* **379**, 1045–1055, doi: 10.1016/s0140-6736(11)60602-8 (2012).
- Sparse whole-genome sequencing identifies two loci for major depressive disorder. *Nature* **523**, 588–591, doi: 10.1038/nature14659 (2015).
- Won, E. & Ham, B. J. Imaging genetics studies on monoaminergic genes in major depressive disorder. *Prog Neuropsychopharmacol Biol Psychiatry* **64**, 311–319, doi: 10.1016/j.pnpbp.2015.03.014 (2016).
- Lisiecka, D. M. *et al.* BDNF Val66Met polymorphism in patterns of neural activation in individuals with MDD and healthy controls. *J Affect Disord* **184**, 239–244, doi: 10.1016/j.jad.2015.06.002 (2015).
- Ide, S. *et al.* Relationship between a BDNF gene polymorphism and the brain volume in treatment-naïve patients with major depressive disorder: A VBM analysis of brain MRI. *Psychiatry Res* **233**, 120–124, doi: 10.1016/j.psychres.2015.05.016 (2015).
- van Rossum, E. F. *et al.* Polymorphisms of the glucocorticoid receptor gene and major depression. *Biol Psychiatry* **59**, 681–688, doi: 10.1016/j.biopsych.2006.02.007 (2006).
- Menke, A. *et al.* Genetic variation in *FKBP5* associated with the extent of stress hormone dysregulation in major depression. *Genes, brain, and behavior* **12**, 289–296, doi: 10.1111/gbb.12026 (2013).
- Pagliaccio, D. *et al.* Stress-system genes and life stress predict cortisol levels and amygdala and hippocampal volumes in children. *Neuropsychopharmacology* **39**, 1245–1253, doi: 10.1038/npp.2013.327 (2014).
- Brown, E. S., Woolston, D. J. & Frol, A. B. Amygdala volume in patients receiving chronic corticosteroid therapy. *Biol Psychiatry* **63**, 705–709, doi: 10.1016/j.biopsych.2007.09.014 (2008).
- Videbech, P. & Ravnkilde, B. Hippocampal volume and depression: a meta-analysis of MRI studies. *Am J Psychiatry* **161**, 1957–1966, doi: 10.1176/appi.ajp.161.11.1957 (2004).

11. Zobel, A. *et al.* DNA sequence variants of the FKBP5 gene are associated with unipolar depression. *The international journal of neuropsychopharmacology/official scientific journal of the Collegium Internationale Neuropsychopharmacologicum (CINP)* **13**, 649–660, doi: 10.1017/s1461145709991155 (2010).
12. Klengel, T. & Binder, E. B. Allele-specific epigenetic modification: a molecular mechanism for gene-environment interactions in stress-related psychiatric disorders? *Epigenomics* **5**, 109–112, doi: 10.2217/epi.13.11 (2013).
13. Binder, E. B. *et al.* Polymorphisms in FKBP5 are associated with increased recurrence of depressive episodes and rapid response to antidepressant treatment. *Nat Genet* **36**, 1319–1325, doi: 10.1038/ng1479 (2004).
14. Klengel, T. *et al.* Allele-specific FKBP5 DNA demethylation mediates gene-childhood trauma interactions. *Nat Neurosci* **16**, 33–41, doi: 10.1038/nn.3275 (2013).
15. Zannas, A. S. & Binder, E. B. Gene-environment interactions at the FKBP5 locus: sensitive periods, mechanisms and pleiotropism. *Genes, brain, and behavior* **13**, 25–37, doi: 10.1111/gbb.12104 (2014).
16. Klengel, T. & Binder, E. B. FKBP5 allele-specific epigenetic modification in gene by environment interaction. *Neuropsychopharmacology* **40**, 244–246, doi: 10.1038/npp.2014.208 (2015).
17. Pagliaccio, D. *et al.* HPA axis genetic variation, pubertal status, and sex interact to predict amygdala and hippocampus responses to negative emotional faces in school-age children. *Neuroimage* **109**, 1–11, doi: 10.1016/j.neuroimage.2015.01.017 (2015).
18. Fani, N. *et al.* FKBP5 and attention bias for threat: associations with hippocampal function and shape. *JAMA Psychiatry* **70**, 392–400, doi: 10.1001/2013.jamapsychiatry.210 (2013).
19. Liu, X. *et al.* Relationship Between the Cortical Thickness and Serum Cortisol Levels in Drug-Naive, First-Episode Patients with Major Depressive Disorder: a Surface-Based Morphometric Study. *Depress Anxiety* **32**, 702–708, doi: 10.1002/da.22401 (2015).
20. Treadway, M. T. *et al.* Early adverse events, HPA activity and rostral anterior cingulate volume in MDD. *PLoS One* **4**, e4887, doi: 10.1371/journal.pone.0004887 (2009).
21. Tatro, E. T. *et al.* Differential expression of immunophilins FKBP51 and FKBP52 in the frontal cortex of HIV-infected patients with major depressive disorder. *Journal of neuroimmune pharmacology: the official journal of the Society on NeuroImmune Pharmacology* **4**, 218–226, doi: 10.1007/s11481-009-9146-6 (2009).
22. Scharf, S. H., Liebl, C., Binder, E. B., Schmidt, M. V. & Muller, M. B. Expression and regulation of the Fkbp5 gene in the adult mouse brain. *PLoS One* **6**, e16883, doi: 10.1371/journal.pone.0016883 (2011).
23. Tozzi, L. *et al.* Single-Nucleotide Polymorphism of the FKBP5 Gene and Childhood Maltreatment as Predictors of Structural Changes in Brain Areas Involved in Emotional Processing in Depression. *Neuropsychopharmacology* **41**, 487–497, doi: 10.1038/npp.2015.170 (2016).
24. Fujii, T. *et al.* Association between the common functional FKBP5 variant (rs1360780) and brain structure in a non-clinical population. *J Psychiatr Res* **58**, 96–101, doi: 10.1016/j.jpsychires.2014.07.009 (2014).
25. Hohne, N. *et al.* FKBP5 genotype-dependent DNA methylation and mRNA regulation after psychosocial stress in remitted depression and healthy controls. *The international journal of neuropsychopharmacology/official scientific journal of the Collegium Internationale Neuropsychopharmacologicum (CINP)* **18**, doi: 10.1093/ijnpp/pyu087 (2015).
26. Tyrka, A. R. *et al.* Childhood maltreatment and methylation of FK506 binding protein 5 gene (FKBP5). *Dev Psychopathol* **27**, 1637–1645, doi: 10.1017/s0954579415000991 (2015).
27. Schmaal, L. *et al.* Cortical abnormalities in adults and adolescents with major depression based on brain scans from 20 cohorts worldwide in the ENIGMA Major Depressive Disorder Working Group. *Molecular psychiatry*, doi: 10.1038/mp.2016.60 (2016).
28. Zhao, Y. J. *et al.* Brain grey matter abnormalities in medication-free patients with major depressive disorder: a meta-analysis. *Psychol Med* **44**, 2927–2937, doi: 10.1017/s0033291714000518 (2014).
29. Mai, J. K. & Paxinos G., A. J. *Atlas of the Human Brain*. (Academic Press, 1997).
30. Etinger, U. *et al.* Prefrontal and striatal volumes in monozygotic twins concordant and discordant for schizophrenia. *Schizophr Bull* **38**, 192–203, doi: 10.1093/schbul/sbq060 (2012).
31. Koolschijn, P. C., van Haren, N. E., Lensvelt-Mulders, G. J., Hulshoff Pol, H. E. & Kahn, R. S. Brain volume abnormalities in major depressive disorder: a meta-analysis of magnetic resonance imaging studies. *Hum Brain Mapp* **30**, 3719–3735, doi: 10.1002/hbm.20801 (2009).
32. Arnone, D., McIntosh, A. M., Ebmeier, K. P., Munafo, M. R. & Anderson, I. M. Magnetic resonance imaging studies in unipolar depression: systematic review and meta-regression analyses. *European neuropsychopharmacology: the journal of the European College of Neuropsychopharmacology* **22**, 1–16, doi: 10.1016/j.euroneuro.2011.05.003 (2012).
33. Gaebler, M., Daniels, J. K., Lamke, J. P., Fydrich, T. & Walter, H. Behavioural and neural correlates of self-focused emotion regulation in social anxiety disorder. *J Psychiatry Neurosci* **39**, 249–258 (2014).
34. Vogt, B. A. Pain and emotion interactions in subregions of the cingulate gyrus. *Nature reviews. Neuroscience* **6**, 533–544, doi: 10.1038/nrn1704 (2005).
35. van Tol, M. J. *et al.* Local cortical thinning links to resting-state disconnectivity in major depressive disorder. *Psychol Med* **44**, 2053–2065, doi: 10.1017/s0033291713002742 (2014).
36. Caetano, S. C. *et al.* Smaller cingulate volumes in unipolar depressed patients. *Biol Psychiatry* **59**, 702–706, doi: 10.1016/j.biopsych.2005.10.011 (2006).
37. Lai, C. H., Hsu, Y. Y. & Wu, Y. T. First episode drug-naive major depressive disorder with panic disorder: gray matter deficits in limbic and default network structures. *European neuropsychopharmacology: the journal of the European College of Neuropsychopharmacology* **20**, 676–682, doi: 10.1016/j.euroneuro.2010.06.002 (2010).
38. Yang, X. *et al.* Gray matter volume abnormalities were associated with sustained attention in unmedicated major depression. *Compr Psychiatry* **63**, 71–79, doi: 10.1016/j.comppsy.2015.09.003 (2015).
39. Lener, M. S. *et al.* Cortical abnormalities and association with symptom dimensions across the depressive spectrum. *J Affect Disord* **190**, 529–536, doi: 10.1016/j.jad.2015.10.027 (2016).
40. Fallucca, E. *et al.* Distinguishing between major depressive disorder and obsessive-compulsive disorder in children by measuring regional cortical thickness. *Arch Gen Psychiatry* **68**, 527–533, doi: 10.1001/archgenpsychiatry.2011.36 (2011).
41. Inkster, B. *et al.* Structural brain changes in patients with recurrent major depressive disorder presenting with anxiety symptoms. *J Neuroimaging* **21**, 375–382, doi: 10.1111/j.1552-6569.2010.00515.x (2011).
42. Wise, T. *et al.* Common and distinct patterns of grey-matter volume alteration in major depression and bipolar disorder: evidence from voxel-based meta-analysis. *Molecular psychiatry*, doi: 10.1038/mp.2016.72 (2016).
43. Rive, M. M. *et al.* Neural correlates of dysfunctional emotion regulation in major depressive disorder. A systematic review of neuroimaging studies. *Neuroscience and biobehavioral reviews* **37**, 2529–2553, doi: 10.1016/j.neubiorev.2013.07.018 (2013).
44. Vigneau, M. *et al.* Meta-analyzing left hemisphere language areas: phonology, semantics, and sentence processing. *Neuroimage* **30**, 1414–1432, doi: 10.1016/j.neuroimage.2005.11.002 (2006).
45. Miller, C. H., Hamilton, J. P., Sacchet, M. D. & Gotlib, I. H. Meta-analysis of Functional Neuroimaging of Major Depressive Disorder in Youth. *JAMA Psychiatry* **72**, 1045–1053, doi: 10.1001/jamapsychiatry.2015.1376 (2015).
46. Zhang, X. *et al.* First-episode medication-naive major depressive disorder is associated with altered resting brain function in the affective network. *PLoS One* **9**, e85241, doi: 10.1371/journal.pone.0085241 (2014).
47. Wang, L. *et al.* Amplitude of low-frequency oscillations in first-episode, treatment-naive patients with major depressive disorder: a resting-state functional MRI study. *PLoS One* **7**, e48658, doi: 10.1371/journal.pone.0048658 (2012).

48. Koenigsberg, H. W. *et al.* Neural correlates of using distancing to regulate emotional responses to social situations. *Neuropsychologia* **48**, 1813–1822, doi: 10.1016/j.neuropsychologia.2010.03.002 (2010).
49. Diekhof, E. K., Geier, K., Falkai, P. & Gruber, O. Fear is only as deep as the mind allows: a coordinate-based meta-analysis of neuroimaging studies on the regulation of negative affect. *Neuroimage* **58**, 275–285, doi: 10.1016/j.neuroimage.2011.05.073 (2011).
50. Lorenzetti, V., Allen, N. B., Fornito, A. & Yucel, M. Structural brain abnormalities in major depressive disorder: a selective review of recent MRI studies. *J Affect Disord* **117**, 1–17, doi: 10.1016/j.jad.2008.11.021 (2009).
51. Grieve, S. M., Korgaonkar, M. S., Koslow, S. H., Gordon, E. & Williams, L. M. Widespread reductions in gray matter volume in depression. *NeuroImage. Clinical* **3**, 332–339, doi: 10.1016/j.nicl.2013.08.016 (2013).
52. Ozalay, O. *et al.* Cortical thickness and VBM in young women at risk for familial depression and their depressed mothers with positive family history. *Psychiatry Res* **252**, 1–9, doi: 10.1016/j.psychres.2016.04.004 (2016).
53. Winkler, A. M. *et al.* Cortical thickness or grey matter volume? The importance of selecting the phenotype for imaging genetics studies. *Neuroimage* **53**, 1135–1146, doi: 10.1016/j.neuroimage.2009.12.028 (2010).
54. Fani, N. *et al.* FKBP5 genotype and structural integrity of the posterior cingulum. *Neuropsychopharmacology* **39**, 1206–1213, doi: 10.1038/npp.2013.322 (2014).
55. Mamdani, F. *et al.* Variable telomere length across post-mortem human brain regions and specific reduction in the hippocampus of major depressive disorder. *Transl Psychiatry* **5**, e636, doi: 10.1038/tp.2015.134 (2015).
56. Smith, R., Chen, K., Baxter, L., Fort, C. & Lane, R. D. Antidepressant effects of sertraline associated with volume increases in dorsolateral prefrontal cortex. *J Affect Disord* **146**, 414–419, doi: 10.1016/j.jad.2012.07.029 (2013).
57. Duman, R. S. & Monteggia, L. M. A neurotrophic model for stress-related mood disorders. *Biol Psychiatry* **59**, 1116–1127, doi: 10.1016/j.biopsych.2006.02.013 (2006).
58. Starkman, M. N., Giordani, B., Gebarski, S. S. & Schteingart, D. E. Improvement in mood and ideation associated with increase in right caudate volume. *J Affect Disord* **101**, 139–147, doi: 10.1016/j.jad.2006.11.007 (2007).
59. Oldfield, R. C. The assessment and analysis of handedness: the Edinburgh inventory. *Neuropsychologia* **9**, 97–113 (1971).
60. Hamilton, M. A rating scale for depression. *J Neurol Neurosurg Psychiatry* **23**, 56–62 (1960).
61. Fujii, T. *et al.* Effect of the common functional FKBP5 variant (rs1360780) on the hypothalamic-pituitary-adrenal axis and peripheral blood gene expression. *Psychoneuroendocrinology* **42**, 89–97, doi: 10.1016/j.psyneuen.2014.01.007 (2014).
62. Tae, W. S., Kim, S. S., Lee, K. U., Nam, E. C. & Kim, K. W. Validation of hippocampal volumes measured using a manual method and two automated methods (FreeSurfer and IBASPM) in chronic major depressive disorder. *Neuroradiology* **50**, 569–581, doi: 10.1007/s00234-008-0383-9 (2008).
63. Dale, A. M., Fischl, B. & Sereno, M. I. Cortical surface-based analysis. I. Segmentation and surface reconstruction. *Neuroimage* **9**, 179–194, doi: 10.1006/nimg.1998.0395 (1999).
64. Fischl, B. *et al.* Whole brain segmentation: automated labeling of neuroanatomical structures in the human brain. *Neuron* **33**, 341–355 (2002).
65. Fischl, B., Sereno, M. I. & Dale, A. M. Cortical surface-based analysis. II: Inflation, flattening, and a surface-based coordinate system. *Neuroimage* **9**, 195–207, doi: 10.1006/nimg.1998.0396 (1999).
66. Fischl, B. *et al.* Automatically parcellating the human cerebral cortex. *Cerebral cortex (New York, N.Y.: 1991)* **14**, 11–22 (2004).
67. Fischl, B., Liu, A. & Dale, A. M. Automated manifold surgery: constructing geometrically accurate and topologically correct models of the human cerebral cortex. *IEEE transactions on medical imaging* **20**, 70–80, doi: 10.1109/42.906426 (2001).
68. Segonne, F., Pacheco, J. & Fischl, B. Geometrically accurate topology-correction of cortical surfaces using nonseparating loops. *IEEE transactions on medical imaging* **26**, 518–529, doi: 10.1109/tmi.2006.887364 (2007).
69. Destrieux, C., Fischl, B., Dale, A. & Halgren, E. Automatic parcellation of human cortical gyri and sulci using standard anatomical nomenclature. *Neuroimage* **53**, 1–15, doi: 10.1016/j.neuroimage.2010.06.010 (2010).
70. Caspi, A. *et al.* Moderation of the effect of adolescent-onset cannabis use on adult psychosis by a functional polymorphism in the catechol-O-methyltransferase gene: longitudinal evidence of a gene × environment interaction. *Biol Psychiatry* **57**, 1117–1127, doi: 10.1016/j.biopsych.2005.01.026 (2005).
71. Widom, C. S. & Brzustowicz, L. M. MAOA and the “cycle of violence”: childhood abuse and neglect, MAOA genotype, and risk for violent and antisocial behavior. *Biol Psychiatry* **60**, 684–689, doi: 10.1016/j.biopsych.2006.03.039 (2006).
72. Green, M. J. *et al.* Catechol-O-methyltransferase (COMT) genotype moderates the effects of childhood trauma on cognition and symptoms in schizophrenia. *J Psychiatr Res* **49**, 43–50, doi: 10.1016/j.jpsychires.2013.10.018 (2014).
73. Benjamini, Y. & Hochberg, Y. Controlling the false discovery rate: a practical and powerful approach to multiple testing. *Journal of the Royal Statistical Society. Series B (Methodological)* **289**–300 (1995).

Acknowledgements

This research was supported by Basic Science Research Program through the National Research Foundation of Korea (NRF) funded by the Ministry of Education, Science and Technology (NRF-2014R1A1A2058864), and the Korean Health Technology R&D Project, Ministry of Health & Welfare, Republic of Korea (A120004).

Author Contributions

K.M.H. and E.W. contributed equally to this article as co-first authors. They wrote the manuscript. K.M.H. managed the literature searches, and E.W. undertook the statistical analysis of data. C.H., Y.K.K., S.H.K., S.H.J. and M.S.L. contributed to the molecular genetic analyses. J.K., Y.S. and W.S.T. contributed to analysis and interpretation of the MRI data. B.J.H. and W.S.T. designed the study and wrote the protocol as co-corresponding authors. All authors contributed significantly to and have approved the final manuscript.

Additional Information

Supplementary information accompanies this paper at <http://www.nature.com/srep>

Competing financial interests: The authors declare no competing financial interests.

How to cite this article: Han, K.-M. *et al.* Influence of *FKBP5* polymorphism and DNA methylation on structural changes of the brain in major depressive disorder. *Sci. Rep.* **7**, 42621; doi: 10.1038/srep42621 (2017).

Publisher's note: Springer Nature remains neutral with regard to jurisdictional claims in published maps and institutional affiliations.



This work is licensed under a Creative Commons Attribution 4.0 International License. The images or other third party material in this article are included in the article's Creative Commons license, unless indicated otherwise in the credit line; if the material is not included under the Creative Commons license, users will need to obtain permission from the license holder to reproduce the material. To view a copy of this license, visit <http://creativecommons.org/licenses/by/4.0/>

© The Author(s) 2017