

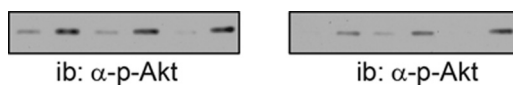


Correction for Zhang et al., RACK1 Recruits STAT3 Specifically to Insulin and Insulin-Like Growth Factor 1 Receptors for Activation, Which Is Important for Regulating Anchorage-Independent Growth

Weizhou Zhang,¹ Cong S. Zong,² Ulrich Hermanto,³ Pablo Lopez-Bergami,⁴ Ze'ev Ronai,⁵ Lu-Hai Wang¹

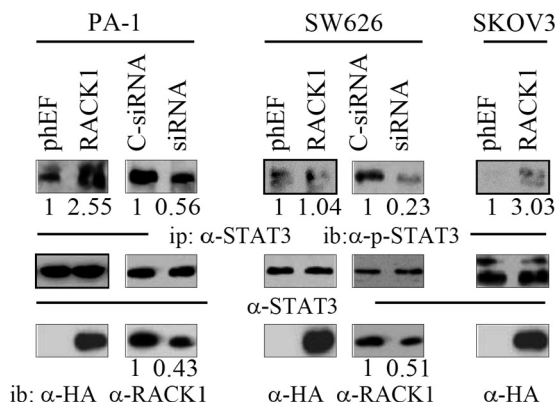
Department of Microbiology¹ and Department of Oncological Sciences,⁴ Mount Sinai School of Medicine, New York, New York, USA; Department of Molecular and Cellular Oncology² and Department of Radiation Oncology,³ M. D. Anderson Cancer Center, University of Texas, Houston, Texas, USA; Signal Transduction Program, The Burnham Institute, La Jolla, California, USA⁵

Volume 26, no. 2, p. 413–424, 2006, <https://doi.org/10.1128/MCB.26.2.413-424.2006>. Page 419, Fig. 6A and B: The Western blot images of p-Akt were placed by mistake. They were from an Akt blot that was accidentally scanned into the folder containing the other images in the figure. The correct p-Akt images (left, Fig. 6A; right, Fig. 6B) should appear as shown below.



Citation Zhang W, Zong CS, Hermanto U, Lopez-Bergami P, Ronai Z, Wang L-H. 2017. Correction for Zhang et al., RACK1 recruits STAT3 specifically to insulin and insulin-like growth factor 1 receptors for activation, which is important for regulating anchorage-independent growth. *Mol Cell Biol* 37:e00656-16. <https://doi.org/10.1128/MCB.00656-16>. **Copyright** © 2017 American Society for Microbiology. All Rights Reserved.

Page 421, Fig. 8B: Three Western blot images of p-STAT3 and STAT3 were placed by mistake: for PA-1 cells, the left image in the middle row; for SW626 cells, the left image in the top row; for SKOV3 cells, the image in the top row. The correct images should appear as shown below.



These changes do not affect the interpretation of the data and conclusions of the study.