

RESEARCH ARTICLE

The role of interleukin 17-mediated immune response in Chagas disease: High level is correlated with better left ventricular function

Giovane R. Sousa^{1#a*}, Juliana A. S. Gomes^{1,2}, Marcos Paulo S. Damasio^{2#b}, Maria Carmo P. Nunes¹, Henrique S. Costa¹, Nayara I. Medeiros³, Rafaelle C. G. Fares^{3#c}, Ana Thereza Chaves¹, Rodrigo Corrêa-Oliveira^{3,4}, Manoel Otávio C. Rocha¹

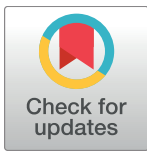
1 Postgraduate Course of Infectious Diseases and Tropical Medicine, School of Medicine, Universidade Federal de Minas Gerais, Belo Horizonte, MG, Brazil, **2** Laboratory of Cell-Cell Interactions, Department of Morphology, Institute of Biological Sciences, Universidade Federal de Minas Gerais, Belo Horizonte, MG, Brazil, **3** Laboratory of Cellular and Molecular Immunology, Centro de Pesquisas René Rachou, FIOCRUZ, Belo Horizonte, MG, Brazil, **4** National Institutes of Science and Technology Tropical Diseases (INCT-DT), Belo Horizonte, MG, Brazil

#a Current address: Section on Immunobiology, Joslin Diabetes Center, Harvard Medical School, Boston, MA, United States of America.

#b Current address: Division of Cell Signalling and Immunology, School of Life Sciences, University of Dundee, Dundee, United Kingdom.

#c Current address: United States Food and Drug Administration, Center for Biologics Evaluation and Research, Silver Spring, MD, United States of America.

* giovane.sousa@gmail.com



OPEN ACCESS

Citation: Sousa GR, Gomes JAS, Damasio MPS, Nunes MCP, Costa HS, Medeiros NI, et al. (2017) The role of interleukin 17-mediated immune response in Chagas disease: High level is correlated with better left ventricular function. PLoS ONE 12(3): e0172833. doi:10.1371/journal.pone.0172833

Editor: Eliseo A. Eugenin, Rutgers University, UNITED STATES

Received: June 20, 2016

Accepted: February 8, 2017

Published: March 9, 2017

Copyright: This is an open access article, free of all copyright, and may be freely reproduced, distributed, transmitted, modified, built upon, or otherwise used by anyone for any lawful purpose. The work is made available under the [Creative Commons CC0](https://creativecommons.org/licenses/by/4.0/) public domain dedication.

Data Availability Statement: The data may not be shared publicly under the conditions determined by study protocol approved by the Research Ethics Committee of the Universidade Federal de Minas Gerais (protocol COEP-ETHIC 502/11, CAAE # 0502.0.203.000-11). Data requests may be directed to the Principal Investigator of the study: rochamoc@medicina.ufmg.br.

Funding: This work was funded by the Conselho Nacional de Desenvolvimento Científico e

Abstract

Interleukin 17A (IL-17A) has been associated with protective rather than pathogenic response in Chagas disease (ChD). However, it is not established whether or not IL-17A-mediated immune response is correlated with patient's left ventricular (LV) function in ChD. To address this question we have gathered cardiac functional parameters from ChD patients and analysed the possible relationship between their plasma IL-17A levels and LV function. Plasma IL-17A levels were measured by BD Cytometric Bead Array (CBA) in 240 patients with positive specific serology for *Trypanosoma cruzi* (*T. cruzi*) grouped as indeterminate (IND) and Chagas cardiomyopathy (CARD) forms. The levels of IL-17A in ChD patients were compared with 32 healthy individuals, mean age of 39 years, 50% male, that were also included as a control group (non-infected [NI]). The overall mean age of ChD patients was 46 years and 52% were male. The IND group included 95 asymptomatic patients, with ages ranging from 27 to 69 years (mean of 43 years), and 42.1% of them were male. The CARD group included 145 patients, which 58.6% were male, with ages ranging from 23 to 67 years (mean of 49). The IND group presented substantially higher levels of IL-17A, median of 26.16 (3.66–48.33) as compared to both the CARD group, median of 13.89 (3.87–34.54) ($P < 0.0001$), and the NI group, median of 10.78 (6.23–22.26) ($P < 0.0001$). The data analysis demonstrated that the IND group comprises a significantly greater proportion ($P < 0.001$) of high IL-17A producers (52.6%, 50 of 95 subjects) than do the other groups. A significant direct correlation was verified between IL-17A levels and cardiac function expressed by LV ejection fraction (LVEF), LV diastolic diameter (LVDd), and body surface area (BSA)-indexed LVDd as well as ratio of the early diastolic transmitral flow velocity to

Tecnológico, <http://www.cnpq.br>, [407692/2012-6, 478846/2009-6, 404151/2012-4 (RCO), 475497/2007-4, 403592/2008-9, 308219/2012-0 (JASG)] and Fundação de Amparo à Pesquisa do Estado de Minas Gerais, <http://www.fapemig.br>, [APQ-02601-10, APQ-04129-10, PPM-00501-13 (JASG)]. JASG, MCPN, RCO and MOCR are CNPq Research Fellows. GRS was supported by a Ph.D. Studentship from the Coordenação de Aperfeiçoamento de Pessoal de Nível Superior (CAPES). The funders had no role in study design, data collection and analysis, decision to publish, or preparation of the manuscript.

Competing interests: The authors have declared that no competing interests exist.

early diastolic mitral annular velocity (E/e') in both groups. We demonstrated that plasma IL-17A levels has an accurate sensitivity and specificity to predict heart failure in serology-positive patients and might be a useful parameter to distinguish patients with or without cardiac impairment. This study indicates a consistent relationship between high expression of IL-17A and better LV in human chronic ChD. Our data raise the possibility that IL-17A plays an important immunomodulatory role in the chronic phase of ChD and might be involved in protection against myocardial damage.

Introduction

The immunopathogenesis of Chagas disease (ChD) is complex and not yet fully understood [1]. Interleukin 17A (IL-17A) is a proinflammatory cytokine that contributes to host protection against a range of infectious pathogens by inducing the recruitment of neutrophils and secretion of inflammatory mediators [2, 3]. Prior literature has suggested an important role for IL-17A in the resolution of infection with the protozoan parasite *T. cruzi* [4–6]. Moreover, preliminary data both from experimental [7] and human *T. cruzi* infection studies [8–10] have indicate that this cytokine is associated with protective rather than pathogenic responses.

Studies on IL-17A in human ChD are limited and have usually employed small sample size [8–11]. In addition, only in one study, correlation analysis was performed between this cytokine and parameters of cardiac function such as LVEF and LVDD [10]. Conflicting evidence exists regarding the role of IL-17A-mediated immune response in human ChD. Such investigations require larger sample sets of cases and controls. Given these findings, this study was designed to evaluate the plasma IL-17A levels in patients with indeterminate and severe cardiac forms of ChD and to assess whether or not IL-17A-mediated immune response would correlate with patients' LV function.

These clinical forms were selected to this study since they represent extremes of the wide clinical spectrum of ChD. The indeterminate form of ChD is defined by the presence of *T. cruzi* infection, absence of symptoms, and of electrocardiographic and radiologic abnormalities [12]. In contrast, Chagas cardiomyopathy is characterized by chronic myocarditis that involves all cardiac chambers and damage to the conduction system [13]. This most severe form of ChD manifests as three frequent syndromes that can co-occur in an individual patient: heart failure, cardiac arrhythmia, and thromboembolism [14]. These patients are of special interest for studies involving the natural development of the disease and the possible determinants of clinical outcome. The identification of non-invasive markers related to morbidity and prognosis may allow the recognition of subgroups of patients with potential to progress toward the severe forms of ChD, which should require special attention and specific therapeutic approaches in order to prevent or delay the unfavorable outcome of these patients. In this study, we gathered cardiac functional parameters from ChD patients, aged 23 to 69 years and analysed the possible relationship between their plasma IL-17A levels and LV function.

Materials and methods

Study population

This study comprises 240 patients in the chronic phase of ChD from endemic areas within the state of Minas Gerais, Brazil, who were identified and selected at the Referral Outpatient Center for Chagas Disease at the Clinical Hospital of the Universidade Federal de Minas Gerais

(UFMG), Brazil. All patients were tested positive for *T. cruzi* and fulfilled eligibility criteria. Positive specific serology for *T. cruzi* was determined by two or more tests (indirect immunofluorescence, enzyme-linked immunosorbent assay [ELISA], or indirect hemagglutination). The study protocol was approved by the Research Ethics Committee of the Universidade Federal de Minas Gerais (protocol COEP-ETHIC 502/11) and Centro de Pesquisas René Rachou (protocol CEPESH-CPqRR 15/2011) and all participants provided written informed consent.

Inclusion criteria were the diagnosis of IND defined as asymptomatic individuals, in sinus rhythm, with no significant alterations in electrocardiography, chest radiograph, and echocardiogram, and diagnosis of CARD characterized by the echocardiographic finding of a dilated left ventricle with impaired ventricular systolic function. LVEF, LVDd, and E/e' ratio were used as variables of LV function, where LVEF <55% and LVDd/BSA \geq 31mm were used to define CARD patients [12]. Healthy individuals from a non-endemic area for ChD and showing negative serological tests for the infection were included as a control group, NI. None of the patients were undergoing etiological treatment nor had been previously treated for *T. cruzi* infection. Individuals with any other chronic inflammatory disease, thyroid dysfunction, valvular heart disease, rheumatic or ischemic heart disease, coronary artery disease, systemic arterial hypertension, chronic obstructive pulmonary disease, hydroelectrolytic disorders, kidney disease, diabetes mellitus, alcoholism, pregnancy defined by laboratorial criteria, and other cardiomyopathies or infectious diseases were excluded from this study. Eligible and consenting subjects were enrolled on the study.

Echocardiogram evaluation

A standard transthoracic two-dimensional (2D) echocardiogram was performed using commercially available equipment (iE33, Philips Medical Systems, Andover, MA) according to recommendations of the American Society of Echocardiography [15]. LV ejection fraction was calculated according to the modified Simpson's rule. LV diastolic function was assessed by pulsed Doppler of the mitral inflow and by tissue Doppler imaging measurements, obtained at the medial and lateral border of the mitral annulus in the apical 4-chamber view [15]. Systolic tissue Doppler velocity (S'), and early (e') and late (A') diastolic tissue velocities were acquired, and the ratio of the mitral E velocity to the mean e' was calculated (E/e').

Multiplexed bead-based immunoassay

A BD CBA Human Th1/Th2/Th17 cytokine Kit (Catalog No. 560484; Becton Dickinson Biosciences, San Jose, CA, USA) was used to quantify IL-17A concentration in plasma, following manufacturer instructions. The data were acquired in a BD FACSCalibur flow cytometry system (BD Biosciences, San Jose, CA, USA) and analyses performed using BD FCAP Array v3.0 software (BD Biosciences, San Jose, CA, USA). The standard curve was determined using a five-parameter logistic (5-PL) equation. The results were based on standard concentration curve and expressed as picogram per milliliter (pg/mL).

Statistical analysis

Statistical comparative analyses were performed in groups of two between the NI, IND, and CARD groups, using the non-parametric Kruskal-Wallis test and Mann-Whitney U test, together with the Bonferroni correction (significance level, $0.05/3 = 0.0167$) [16]. Categorical data were presented as numbers and percentages, and continuous data were expressed as mean \pm standard deviation (SD) or median and interquartile range (25%-75%), as appropriate, based on the prior Shapiro-Wilk normality test.

IBM SPSS Statistics 20.0 software (SPSS Inc., Chicago, Illinois) was used for all analyses. Graphs were prepared using GraphPad Prism v7.0 software (San Diego, CA, USA). Results were nominally significant at two-sided $P < 0.05$.

Results

Characteristics of the study population

The major clinical, eletrocardiographic, and echocardiographic characteristics of the study population are reported in Table 1. A total of 272 subjects were included in the study. Overall, this cohort consists of middle-aged (mean age, 46 years) subjects with 52% of males. The mean age of ChD patients was 46 ± 9.9 years, and 52% were male. The IND group included 95 asymptomatic patients, with ages ranging from 27 to 69 years (mean of 43 ± 9). The CARD group included 145 patients, with ages ranging from 23 to 67 years (mean of 49 ± 10). The CARD group had significantly greater proportion of males than other groups and most of the CARD patients were in NYHA functional class I or II (84.1%). Moreover, 32 healthy individuals, 50% males, ranging from 27 to 58 years of age (mean of 39 ± 10), were also included as the NI group. As expected, the mean QRS duration in the IND group was similar to that observed in the NI group, 83.2 ± 2.6 ms and 81.4 ± 2.9 ms, respectively. QRS duration was increased in all CARD patients with mean of 124.6 ± 26 ms. Corrected QT duration was within normal limits and was similar in the three groups (Table 1). Right bundle-branch block (RBBB) was the most frequent electrocardiogram (ECG) abnormality, observed in 52 of 145 (36%) of CARD patients. Of the CARD patients with RBBB, 41 patients had associated left anterior fascicular block (LAFB) and 1 had left posterior fascicular block (LPFB). Left bundle branch block (LBBB) and first-degree atrioventricular blocks (AVB) were detected, respectively, in 3 (2%) and 13 (9%) of 145 CARD patients. Atrial fibrillation was present in 6 of 145 (4%) of CARD patients and all these patients were taking anticoagulants. Neither NI subjects nor IND patients had RBBB

Table 1. Clinical, eletrocardiographic, and echocardiographic characteristics of the study population.

Characteristic	Healthy control (n = 32)	Indeterminate form (n = 95)	Chagas cardiomyopathy (n = 145)	P-value*
Age, yr	39±10	43±9	49±10	0.0012
Male sex, n (%)	16 (50)	40 (42.1)	85 (58.6)	0.0026
Body-surface area, m ²	1.8 (1.7, 1.9)	1.8 (1.7, 1.8)	1.6 (1.6, 1.7)	0.0189
Heart rate, beats/min	69 (63, 76)	68 (62, 76)	63 (60, 74)	0.0203
Blood pressure, mm Hg				
• Systolic	116±8	119±10	107±12	<0.0001
• Diastolic	79±7	82±7	71±10	<0.0001
Eletrocardiographic				
• QRS duration, ms	81.4±2.9	83.2±2.6	124.6±26	0.0037
• Corrected QT interval, ms	451±32	453±35	453±41	0.4565
Echocardiographic				
• LV ejection fraction, %	68 (66, 70)	66 (63, 69)	38 (29, 47)	<0.0001
• LV end-diastolic diameter, mm	45 (43, 47)	48 (45, 50)	63 (59, 68)	<0.0001
• LV end-diastolic diameter/BSA, mm/m ²	25 (23, 26)	27 (25, 28)	37 (34, 41)	<0.0001
• E/e' ratio	7.3 (6.2, 10.1)	8.2 (6.3, 10.1)	10.3 (7.5, 14.2)	<0.0001

Values are expressed as mean and standard deviation (mean±SD), median (interquartile range), or absolute number and percentage. E/e' ratio, ratio of the early diastolic transmitral flow velocity to early diastolic mitral annular velocity; LAFB, left anterior fascicular block; LV, left ventricular; RBBB, right bundle branch block; LBBB, left bundle branch block.

*P-value< 0.05 (two-sided) for comparison between the groups (Kruskal-Wallis test).

doi:10.1371/journal.pone.0172833.t001

(with or without associated LAFB), LBBB, LPFB, or other significant ECG abnormality that would motivate the exclusion from this study.

Plasma IL-17A levels are associated with morbidity in Chagas disease

To determine whether the levels of IL-17A are associated with morbidity in ChD, the concentration of this cytokine was evaluated in the plasma from IND and CARD patients as well as healthy individuals. Differences among the three groups were observed for IL-17A ($P < 0.0001$). The IND group presented substantially higher levels of IL-17A, median of 26.16 (3.66–48.33) as compared to the CARD group, median of 13.89 (3.87–34.54) ($P < 0.0001$), and the NI group, median of 10.78 (6.23–22.26) ($P < 0.0001$) (Fig 1). To establish the IL-17A cutoff that would permit the identification of patients with IND and CARD forms of ChD, an analysis was performed that allows a division of the individuals into three categories: low (3.66–12.69 pg/mL), intermediate (12.88–24.88 pg/mL), and high (24.89–48.33 pg/mL) IL-17A producers. To that end, these three groups were identified based on the detailed analysis of individual levels of IL-17A obtained for NI, IND, and CARD groups; a statistical method based in tertiles [17] was employed to determine the cut-off for IL-17A plasma levels, as shown in Fig 1. Data analysis demonstrated that the IND group comprises a significantly higher frequency of intermediate (40% 38/95) and high (52.63% 50/95) IL-17A producers than do the other groups ($P < 0.001$) (Fig 1). In contrast, most of the CARD patients displayed values of IL-17A levels that are below the cutoff for low IL-17A producers, being significantly lower than IND patients (7.36%, 7/95) ($P < 0.001$), while approximately 30.34% (44/145) and 26.89% (39/145) of CARD patients were identified as intermediate and high IL-17A producers, respectively (Fig 1). None of the individuals were identified as high IL-17A producers in the NI group (Fig 1).

High IL-17A levels correlated with better left ventricular function in Chagas disease

In order to investigate the existence of association between IL-17A levels and LV function in ChD, correlation analysis was performed between the plasma levels of IL-17A in either ChD patients and healthy non-chagasic individuals and variables of LV systolic and diastolic ventricular functions. Data analysis indicated a relationship between lower levels of IL-17A and worse cardiac function in ChD. Interestingly, a significant direct correlation was identified between IL-17A levels and LVEF in ChD patients as a whole (Fig 2A). In addition, a significant inverse correlations between IL-17A levels and either LVDd (Fig 2B), LVDd/BSA (Fig 2C) or E/e' ratio (Fig 2D) could be observed. In contrast, no linear relationship could be found between IL-17A levels and variables of LV ventricular function in the NI group.

When the association between the levels of IL-17A and LVEF was investigated in the IND group, a significant direct correlation was observed ($r = 0.6972$, $P < 0.0001$) (Fig 3A). In contrast, a significant inverse correlation could be found between IL-17A levels and both LVDd ($r = -0.3974$, $P < 0.0001$) (Fig 3B) and LVDd/BSA ($r = -0.3427$, $P < 0.0001$) in the same group (Fig 3C). Plasma IL-17A levels were also inversely correlated with E/e' ratio in the IND group ($r = -0.3694$, $P < 0.0001$) (Fig 3D). A significant direct correlation was identified when IL-17A levels were compared with LVEF in the CARD group ($r = 0.5309$, $P < 0.0001$) (Fig 3E). Conversely, inverse correlation was observed between IL-17A levels and both LVDd ($r = -0.3029$, $P = 0.0006$) (Fig 3F) and LVDd/BSA ($r = -0.4017$, $P = 0.0001$) (Fig 3G) in the CARD group. Similar results could be found when comparing IL-17A levels and E/e' ratio in the same group ($r = -0.3371$, $P = 0.0001$) (Fig 3H).

Although, the IL-17A levels correlated directly with better left ventricular function in chronic ChD, we sought to obtain additional evidence of the strength of association.

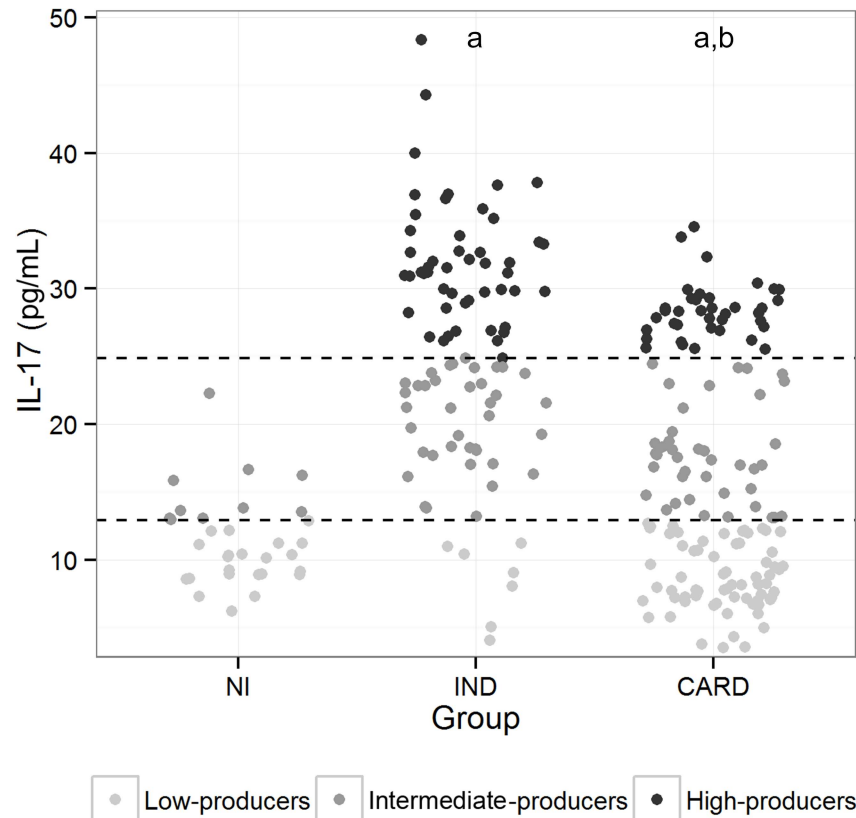


Fig 1. Analyses of plasma IL-17A levels in the study groups. Representative scatter plot graph of plasma IL-17A used to establish the cutoff to define low, intermediate, and high cytokine producers. Low IL-17A producers were defined by values of lower than the first tertile. Intermediate IL-17A producers were defined by values equal to or lower than the second tertile, while high IL-17A producers were defined by values higher than or equal to the second tertile [18]. The results were expressed by pg/mL. Results were considered significant with a *P*-value <0.05.

doi:10.1371/journal.pone.0172833.g001

Considering that in clinical workup the determination of plasma IL-17A levels would be achieved to downstream to Chagas serology, a Receiver Operating Characteristic (ROC) curve analysis was performed based on the IND and CARD groups. The contribution of IL-17A levels to discriminate diseased cases with heart failure (CARD) from infected patients without cardiac impairment (IND) is shown in the ROC curve (Fig 4). The area under the ROC curve (AUC) to predict HF (Fig 4) was 0.78 (95% CI: 0.722, 0.838; *P* < 0.0001). The optimal threshold of IL-17A to predict CARD in serology-positive patients was less than 17.97 pg/mL based on accurate sensitivity and specificity of 61% and 84%, respectively.

Discussion

The principal findings of this study were: (a) The plasma IL-17A levels were at least 2-fold higher in the IND group than those in the NI and CARD groups; (b) The IND group presented a significantly greater proportion of high IL-17A producers than do the other groups; and (c) high plasma levels of IL-17A is associated with better LV function in ChD.

There was also a greater proportion of males in the CARD group; however, an association between male sex and risk progression to chronic Chagas cardiomyopathy (CCC) or death in patients with ChD has previously been reported [18–20]. A previous study in an endemic area including asymptomatic *T. cruzi*-seropositive blood donors demonstrated that male sex was

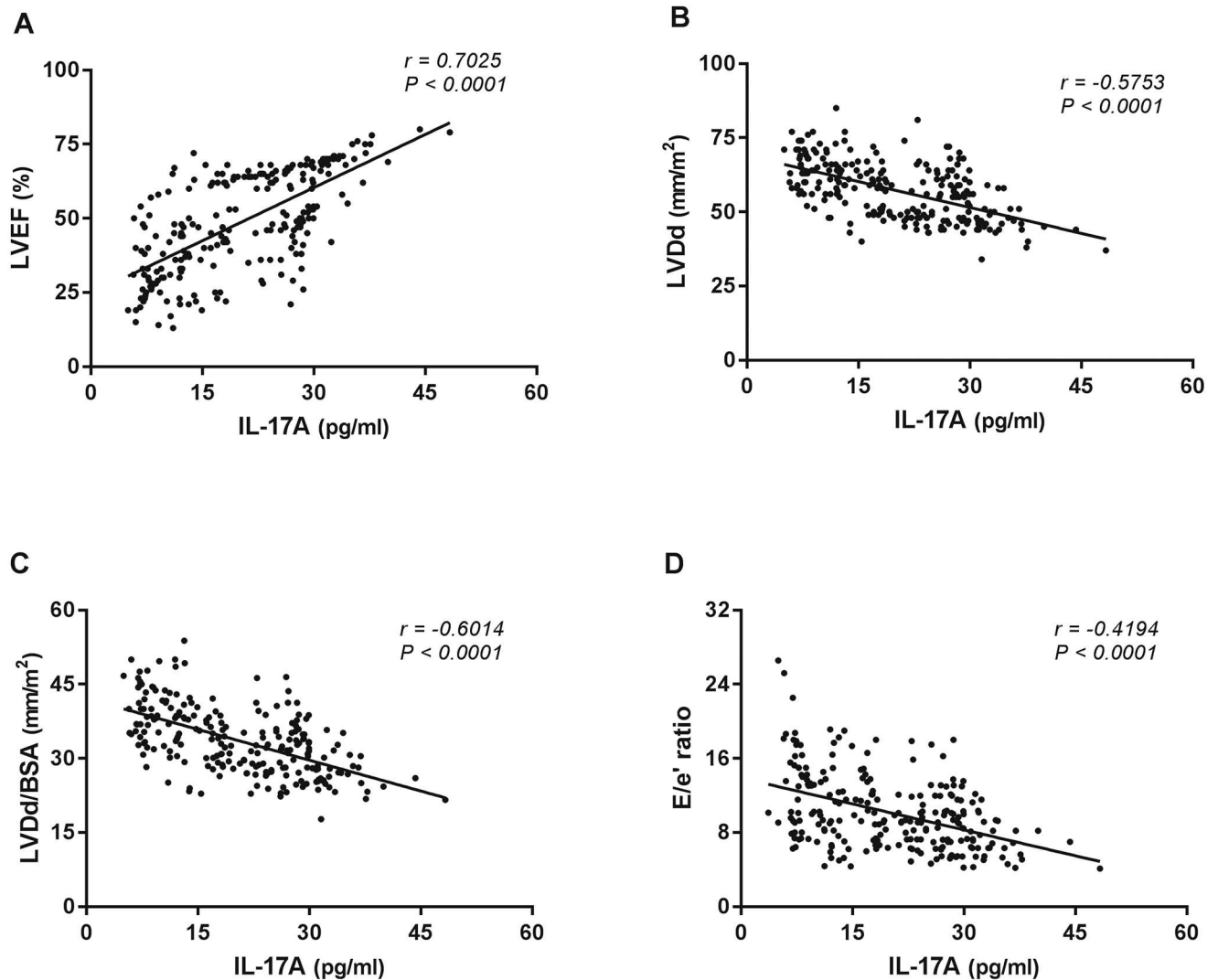


Fig 2. Correlation analysis between plasma IL-17A levels and echocardiographic parameters of left ventricular function in Chagas disease patients. Correlation analysis was performed between plasma IL-17A levels and variables of LV function (LVEF, LVDd, LVDd/BSA, and E/e' ratio) in the ChD patients as a whole. The analysis was performed using the Spearman correlation coefficient, and results were considered significant when P -value < 0.05 . Significant differences are indicated in each graph together with the r value.

doi:10.1371/journal.pone.0172833.g002

associated with the onset of cardiomyopathy [21]. Therefore, in the present study the greater proportion of male in CARD group was expected.

The present study included quantitative cardiac functional parameters to assess the LV function of the study population. In CCC patients, impairment of LV filling and systolic dysfunction usually coexist [22–24] and are consistent predictors of functional capacity [25, 26] and mortality [27] in this severe form of ChD. A previous study showed that patients with mild or moderate systolic dysfunction, the E/e' ratio (an important marker of LV filling pressure) of more than 15 was powerful in predicting prognosis in patients with Chagas cardiomyopathy [28].

Higher levels of IL-17A in the IND group compared to the NI group might be explained by a possible effect of *T. cruzi* infection inducing immune response even in these asymptomatic patients. This result is in agreement with findings from previous studies [8–10]. A significant

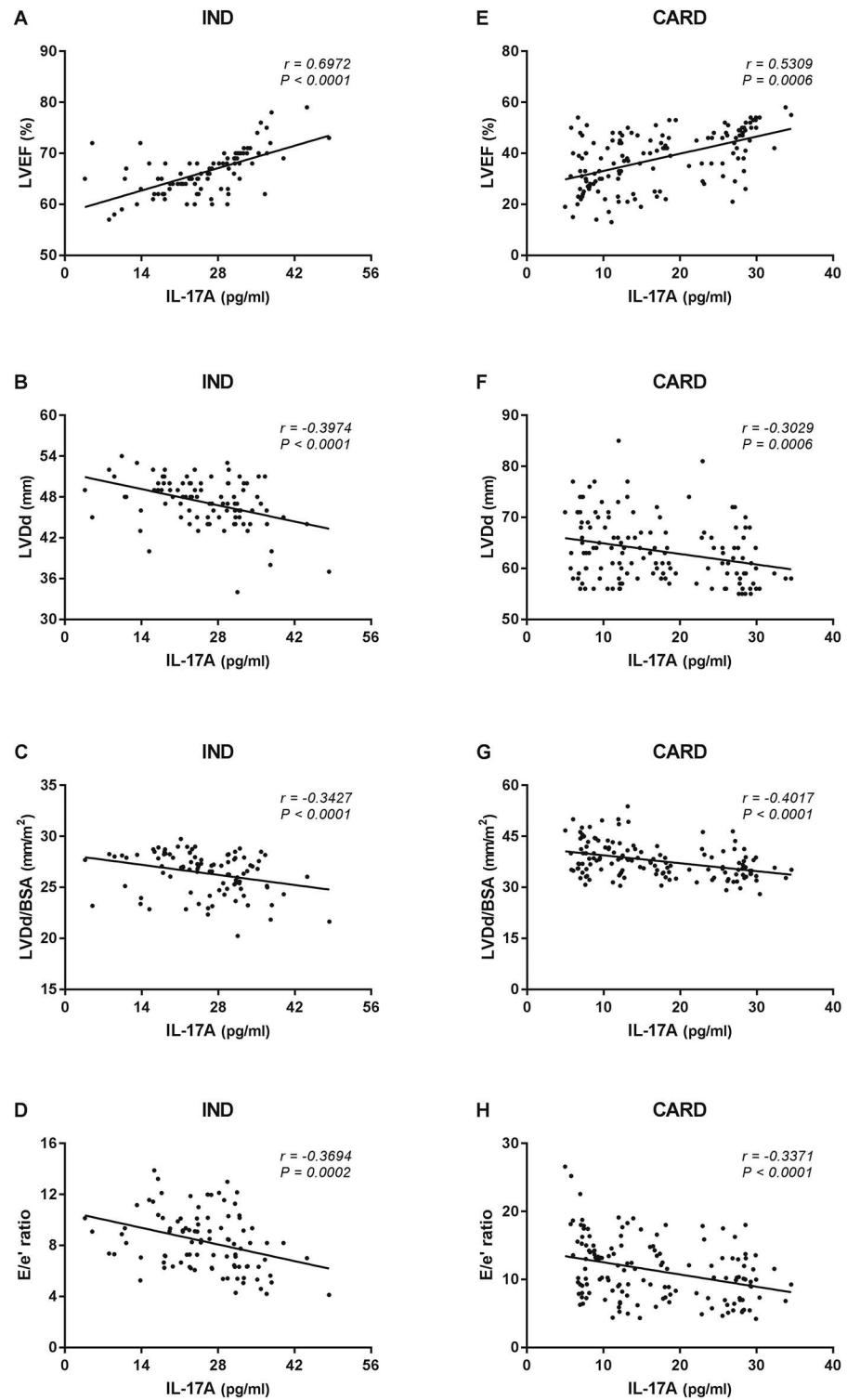


Fig 3. Correlation analysis between plasma IL-17A levels and echocardiographic parameters of left ventricular function according to the form of Chagas disease. Correlation analysis was performed between plasma IL-17A levels and parameters of LV function (LVEF, LVDd, LVDd/BSA, and E/e' ratio) in the IND (n = 95, A, B, C, and D, respectively) and CARD (n = 145, E, F, G, and H, respectively) groups. The analysis was performed using the Spearman correlation coefficient, and results were considered significant when P-value < 0.05. Significant differences are indicated in each graph together with the r value.

doi:10.1371/journal.pone.0172833.g003

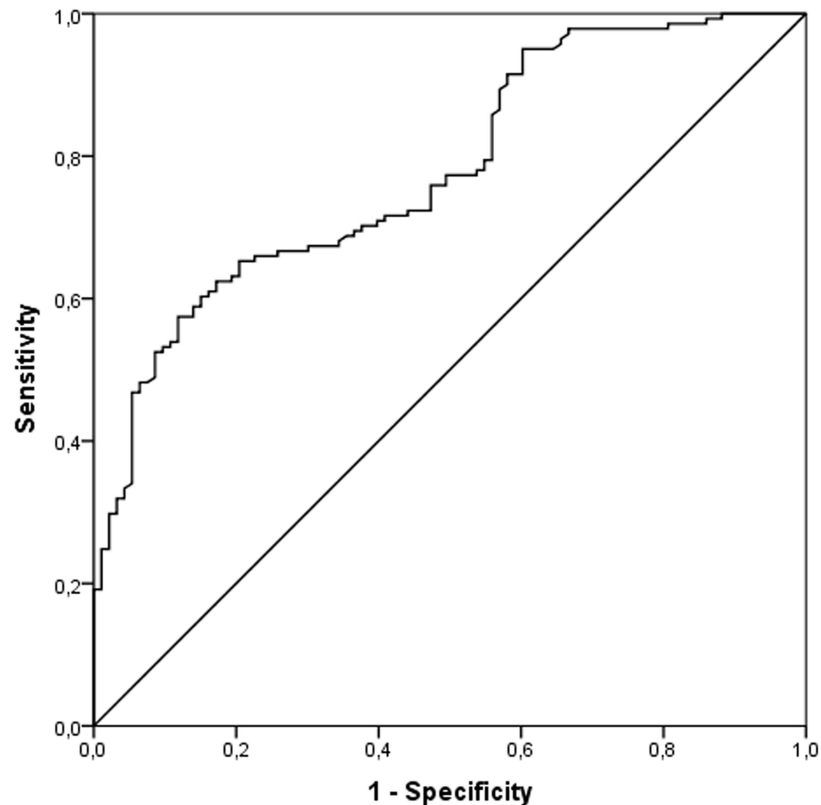


Fig 4. Receiver operating characteristics curve of sensitivity of heart failure prediction against specificity. A risk score was calculated on the basis of the plasma IL-17A levels in the IND and CARD groups by logistic regression, and the proportion of all cases that score greater than any given cutoff (sensitivity) against the proportion of the IND patients that would also exceed the same cutoff (specificity) was plotted. The slope of the tangent line at a cutpoint indicates the likelihood ratio for that value of the test and the diagonal line represents random prediction.

doi:10.1371/journal.pone.0172833.g004

frequency of IND patients presented high levels of IL-17A, whereas most of the CARD patients expressed low levels of this cytokine. Although, low and high producers of IL-17A were observed in both groups. The importance of this differential expression throughout the chronic phase of ChD and to the disease outcome remains unknown. A possible explanation, for the broad distribution range of IL-17A levels produced by CARD patients, could be the difference in the expression of immune response determined by different host's genetic patterns. Furthermore, it could be hypothesized that lower IL-17A producers in the CARD group would develop an earlier or worse LV function. On the other hand, higher IL-17A producers in the same group probably would display later and less intense cardiac morbidity. In contrast, lower IL-17A producers in the IND group would be those likely to develop myocardial damage, whereas those that show higher levels of this cytokine would tend to present a later cardiac involvement or remain asymptomatic. In this context, it is seems reasonable to consider that intermediate IL-17A producers might present an expression profile resulting of balanced immune response controlled by regulatory mechanisms such as Foxp3+CD25(high)CD4+ regulatory T cells previously demonstrated by our group [8]. Nevertheless, the disease progression and clinical future of those patients has not been established yet and probably involve multiple factors.

We also addressed the question of whether or not IL-17A-mediated immune response is correlated with patients' LV. Notably, a significant correlation was observed between the plasma IL-17A levels in either IND or CARD groups and cardiac involvement expressed by variables of systolic (LVEF) and diastolic (LVDd, LVDd/BSA and E/e' ratio) ventricular function. Overall, these data showed that high plasma levels of IL-17A are associated with better LV function. Thus, it is tempting to speculate that IL-17A might be linked to a protective role in the chronic phase of ChD. While our data indicate a consistent relationship between high IL-17A levels and better cardiac function in human ChD, this and other previous studies in patients with ChD were cross-sectional and could not establish causality between heart damage protection and IL-17A expression. In-depth basic and translational investigations aimed at understanding the molecular immunology and the pathophysiology are needed to elucidate the mechanisms underlying the IL-17A expression in long-term chronic ChD. Our longitudinal study cohort in progress provide an opportunity to investigate the influence of IL-17A expression on disease progression and clinical outcome since multiple samples are available from the same patients and healthy control subjects without ChD.

The findings from prior studies have suggested a possible protective role of IL-17A in experimental infection models [4] and in human ChD [10]. In order to better understand the role of IL-17A in *T. cruzi* infection, IL-17A^{-/-} mice and anti-IL-17A treatment were used as strategy [4, 5]. In this study, it was verified earlier mortality of IL-17A^{-/-} mice when compared to mice controls treated with anti-IL-17A. These studies suggest that IL-17A would be relevant for the balance of immune response and important for parasite control during the chronic phase of the disease [1]. However, a recent study investigating the role of IL-17A in non-chagasic inflammatory dilated cardiomyopathy—an important cause of noncongenital heart failure in individuals under the age of 40, has reported that IL-17A/IL-17RA signaling pathway is required for the development of the disease [29]. It was demonstrated that IL-17RA^{-/-} develop limited cardiac enlargement and fibrosis. They further showed that IL-17A was associated with induction of chemokine production by fibroblasts, which attracts effector cells to the myocardium and increases inflammation [29]. In ChD context, increased expression of IL-17A mRNA was found in the myocardial inflammatory infiltrate of CCC patients [30]. In this cross-sectional study, the expression of IL-17A was evaluated in myocardial samples from 14 end-stage heart failure CCC patients, 8 end-stage heart failure patients with noninflammatory cardiomyopathies (5 patients with idiopathic dilated cardiomyopathy and 3 patients with ischemic cardiomyopathy, all seronegative for *T. cruzi*), and 6 nonfailing donor hearts. However, patients with indeterminate form of ChD—important subjects to study the immune response and its association with disease morbidity and mortality in chronic ChD were not included in the investigation.

In the present study we have examined the expression of IL-17A in plasma samples from a large set of IND and CARD patients, and healthy controls. We demonstrated that plasma IL-17A levels has an accurate sensitivity and specificity to predict heart failure in serology-positive patients and might be a useful parameter to distinguish patients with or without cardiac impairment, as CARD and IND patients, respectively. Our findings indicate a consistent relationship between high expression of IL-17A and better LV in human chronic ChD. Nonetheless, observations on human plasma samples may not reflect which would be observed in myocardial LV free wall heart specimens from IND and CARD patients.

IL-17A has been described as a cytokine secreted by T helper 17 cells (Th17). Moreover, other cells were recognized as IL-17A sources, such as monocytes, neutrophils, and natural killer T (NKT) cells [2, 3, 31]. Bermejo *et al.* showed that B cells are the principal source of IL-17A after infection with the extracellular parasite *T. cruzi* and that the B cells produce IL-17A independently of ROR γ T, which is considered the main transcription factor involved with

Th17 differentiation [6]. Fibroblasts, macrophages, neutrophils, B and T lymphocytes are considered target cells of this cytokine [3]. Once IL-17A binds to its receptor, it induces the secretion of inflammatory cytokines (TNF, IL-1 and IL-6) and chemokines (CXCL1, CXCL5, IL-8, CCL2, and CCL7). Like many cytokines, IL-17A may play a role in tumor development, encephalomyelitis, arthritis, systemic lupus erythematosus, inflammatory bowel disease, sepsis, and allergic diseases [31, 32]. In contrast to pathogenic roles of IL-17A in autoimmune and chronic inflammatory diseases, this cytokine promotes host defense against pathogens at epithelial and mucosal tissues which include the skin, lung, and intestine [2, 3, 31].

IL-17A induces the expression of several proinflammatory chemokines and cytokines through activation of NF- κ B, MAPKs and C/EBPs cascades [32–34]. Furthermore, other studies have indicated that IL-17A can activate JAK–PI3K and JAK–STAT pathways [35, 36]. However, how IL-17A contributes to the activation of these pathways is unclear. Hence, further investigations will be necessary to identify the signaling pathway and the effects of IL-17A in distinct cell populations such as CD8+ T cells, macrophages, and NKT cells. It is also important to evaluate the signaling induced by IL-17A considering the presence of antigens and different gene polymorphisms.

In this study, we included a large and homogenous cohort of ChD patients who have not been previously treated for *T. cruzi* infection and performed a strategic analysis to establish an appropriate determination of cutoff edge that allows the division of IL-17A levels in three categories [37]. This method of analysis dichotomize low and high producers of IL-17A –extremes of expression, and express better a biological phenomenon that presents a wide dispersion.

In conclusion, our data raise the possibility that IL-17A plays an important immunomodulatory role in the chronic phase of ChD and might be involved in protection against myocardial damage. However, there are still many open questions pertaining the role of IL-17A in *T. cruzi* infection [38] and further studies will be necessary to address them. To elucidate the role of IL-17A in the development or control of chronic Chagas cardiomyopathy, we are now also investigating whether lower levels of IL-17A are related to higher morbidity, expressed by arrhythmogenic substrates, in CARD patients and either by the presence of subclinical alterations or arrhythmogenicity in IND patients. Understanding the role of this cytokine may provide useful information for better comprehension of the pathogenesis of ChD and contribute to the proper management and treatment of the patients.

Acknowledgments

We thank the colleagues of the Division of Echocardiography and of the Referral Outpatient Center for Chagas Disease at the Clinical Hospital, UFMG as well as of the Laboratory of Cellular and Molecular Immunology and of the Flow Cytometry facility at the Centro de Pesquisas René Rachou, FIOCRUZ for their technical assistance. The authors also thank the Program for Technological Development in Tools for Health–PDTIS–FIOCRUZ for the use of its facilities. We acknowledge Professor Paul Crocker at the Division of Cell Signalling and Immunology, University of Dundee, UK for helpful discussions. We are very grateful to all patients and control volunteers who participated in this study. This work was supported by the Conselho Nacional de Desenvolvimento Científico e Tecnológico (CNPq) and Fundação de Amparo à Pesquisa do Estado de Minas Gerais (FAPEMIG), Brazil. JASG, MCPN, RCO and MOCR are CNPq Research Fellows. GRS was supported by a Ph.D. Studentship from the Coordenação de Aperfeiçoamento de Pessoal de Nível Superior (CAPES).

Author Contributions

Conceptualization: MOCR RCO.

Data curation: GRS.

Formal analysis: GRS MPSD.

Funding acquisition: JASG RCO.

Investigation: GRS MPSD MCPN.

Project administration: MOCR.

Resources: JASG RCO MCPN MOCR.

Supervision: MOCR.

Visualization: GRS MPSD HSC NIM RCGF ATC.

Writing – original draft: GRS MPSD.

Writing – review & editing: GRS MPSD MCPN RCO MOCR.

References

1. Dutra WO, Menezes CA, Magalhaes LM, Gollob KJ. Immunoregulatory networks in human Chagas disease. *Parasite Immunol.* 2014; 36(8):377–87. doi: [10.1111/pim.12107](https://doi.org/10.1111/pim.12107) PMID: [24611805](https://pubmed.ncbi.nlm.nih.gov/24611805/)
2. Gaffen SL. Structure and signalling in the IL-17 receptor family. *Nat Rev Immunol.* 2009; 9(8):556–67. doi: [10.1038/nri2586](https://doi.org/10.1038/nri2586) PMID: [19575028](https://pubmed.ncbi.nlm.nih.gov/19575028/)
3. Gaffen S. IL-17 receptor composition. *Nat Rev Immunol.* 2016; 16(1):4.
4. Miyazaki Y, Hamano S, Wang S, Shimanoe Y, Iwakura Y, Yoshida H. IL-17 is necessary for host protection against acute-phase *Trypanosoma cruzi* infection. *J Immunol.* 2010; 185(2):1150–7. doi: [10.4049/jimmunol.0900047](https://doi.org/10.4049/jimmunol.0900047) PMID: [20562260](https://pubmed.ncbi.nlm.nih.gov/20562260/)
5. da Matta Guedes PM, Gutierrez FR, Maia FL, Milanezi CM, Silva GK, Pavanelli WR, et al. IL-17 produced during *Trypanosoma cruzi* infection plays a central role in regulating parasite-induced myocarditis. *PLoS Negl Trop Dis.* 2010; 4(2):e604. doi: [10.1371/journal.pntd.0000604](https://doi.org/10.1371/journal.pntd.0000604) PMID: [20169058](https://pubmed.ncbi.nlm.nih.gov/20169058/)
6. Bermejo DA, Jackson SW, Gorosito-Serran M, Acosta-Rodriguez EV, Amezcua-Vesely MC, Sather BD, et al. *Trypanosoma cruzi* trans-sialidase initiates a program independent of the transcription factors ROR γ and Ahr that leads to IL-17 production by activated B cells. *Nat Immunol.* 2013; 14(5):514–22. doi: [10.1038/ni.2569](https://doi.org/10.1038/ni.2569) PMID: [23563688](https://pubmed.ncbi.nlm.nih.gov/23563688/)
7. Tosello Boari J, Amezcua Vesely MC, Bermejo DA, Ramello MC, Montes CL, Cejas H, et al. IL-17RA signaling reduces inflammation and mortality during *Trypanosoma cruzi* infection by recruiting suppressive IL-10-producing neutrophils. *PLoS Pathog.* 2012; 8(4):e1002658. doi: [10.1371/journal.ppat.1002658](https://doi.org/10.1371/journal.ppat.1002658) PMID: [22577359](https://pubmed.ncbi.nlm.nih.gov/22577359/)
8. de Araujo FF, Correa-Oliveira R, Rocha MO, Chaves AT, Fiuza JA, Fares RC, et al. Foxp3+CD25(high) CD4+ regulatory T cells from indeterminate patients with Chagas disease can suppress the effector cells and cytokines and reveal altered correlations with disease severity. *Immunobiology.* 2012; 217(8):768–77. doi: [10.1016/j.imbio.2012.04.008](https://doi.org/10.1016/j.imbio.2012.04.008) PMID: [22672991](https://pubmed.ncbi.nlm.nih.gov/22672991/)
9. Guedes PM, Gutierrez FR, Silva GK, Dellalibera-Joviliano R, Rodrigues GJ, Bendhack LM, et al. Deficient regulatory T cell activity and low frequency of IL-17-producing T cells correlate with the extent of cardiomyopathy in human Chagas' disease. *PLoS Negl Trop Dis.* 2012; 6(4):e1630. doi: [10.1371/journal.pntd.0001630](https://doi.org/10.1371/journal.pntd.0001630) PMID: [22545173](https://pubmed.ncbi.nlm.nih.gov/22545173/)
10. Magalhaes LM, Villani FN, Nunes Mdo C, Gollob KJ, Rocha MO, Dutra WO. High interleukin 17 expression is correlated with better cardiac function in human Chagas disease. *J Infect Dis.* 2013; 207(4):661–5. doi: [10.1093/infdis/jis724](https://doi.org/10.1093/infdis/jis724) PMID: [23204182](https://pubmed.ncbi.nlm.nih.gov/23204182/)
11. Perez AR, Silva-Barbosa SD, Berbert LR, Revelli S, Beloscar J, Savino W, et al. Immunoneuroendocrine alterations in patients with progressive forms of chronic Chagas disease. *J Neuroimmunol.* 2011; 235(1–2):84–90. doi: [10.1016/j.jneuroim.2011.03.010](https://doi.org/10.1016/j.jneuroim.2011.03.010) PMID: [21496931](https://pubmed.ncbi.nlm.nih.gov/21496931/)
12. Rocha MO, Ribeiro AL, Teixeira MM. Clinical management of chronic Chagas cardiomyopathy. *Front Biosci.* 2003; 8:e44–54. PMID: [12456332](https://pubmed.ncbi.nlm.nih.gov/12456332/)
13. Nunes MC, Dones W, Morillo CA, Encina JJ, Ribeiro AL. Chagas disease: an overview of clinical and epidemiological aspects. *J Am Coll Cardiol.* 2013; 62(9):767–76. doi: [10.1016/j.jacc.2013.05.046](https://doi.org/10.1016/j.jacc.2013.05.046) PMID: [23770163](https://pubmed.ncbi.nlm.nih.gov/23770163/)

14. Ribeiro AL, Nunes MP, Teixeira MM, Rocha MO. Diagnosis and management of Chagas disease and cardiomyopathy. *Nat Rev Cardiol*. 2012; 9(10):576–89. doi: [10.1038/nrcardio.2012.109](https://doi.org/10.1038/nrcardio.2012.109) PMID: [22847166](https://pubmed.ncbi.nlm.nih.gov/22847166/)
15. Lang RM, Bierig M, Devereux RB, Flachskampf FA, Foster E, Pellikka PA, et al. Recommendations for chamber quantification: a report from the American Society of Echocardiography's Guidelines and Standards Committee and the Chamber Quantification Writing Group, developed in conjunction with the European Association of Echocardiography, a branch of the European Society of Cardiology. *J Am Soc Echocardiogr*. 2005; 18(12):1440–63. doi: [10.1016/j.echo.2005.10.005](https://doi.org/10.1016/j.echo.2005.10.005) PMID: [16376782](https://pubmed.ncbi.nlm.nih.gov/16376782/)
16. Snedecor GW, Cochran WG. *Statistical Methods*. 7th ed. Ames, Iowa, Iowa State University Press, 1980
17. Altman DG. *Practical statistics for medical research*. 1st ed. London: Chapman & Hall; 1991.
18. Rassi A Jr, Rassi A, Little WC, Xavier SS, Rassi SG, Rassi AG, et al. Development and validation of a risk score for predicting death in Chagas' heart disease. *N Engl J Med*. 2006; 355(8):799–808. doi: [10.1056/NEJMoa053241](https://doi.org/10.1056/NEJMoa053241) PMID: [16928995](https://pubmed.ncbi.nlm.nih.gov/16928995/)
19. Basquiera AL, Sembaj A, Aguerri AM, Omelianiuk M, Guzmán S, Moreno Barral J, et al. Risk progression to chronic Chagas cardiomyopathy: influence of male sex and of parasitaemia detected by polymerase chain reaction. *Heart*. 2003; 89(10):1186–90. PMID: [12975414](https://pubmed.ncbi.nlm.nih.gov/12975414/)
20. Pereira JB, Wilcox HP, Coura JR. [The evolution of chronic chagasic cardiopathy. I. The influence of parasitemia]. *Rev Soc Bras Med Trop*. 1992; 25(2):101–8. PMID: [1308935](https://pubmed.ncbi.nlm.nih.gov/1308935/)
21. Sabino EC, Ribeiro AL, Salemi VM, Di Lorenzo Oliveira C, Antunes AP, Menezes MM, et al. Ten-year incidence of Chagas cardiomyopathy among asymptomatic *Trypanosoma cruzi*-seropositive former blood donors. *Circulation*. 2013; 127(10):1105–15. doi: [10.1161/CIRCULATIONAHA.112.123612](https://doi.org/10.1161/CIRCULATIONAHA.112.123612) PMID: [23393012](https://pubmed.ncbi.nlm.nih.gov/23393012/)
22. Acquatella H. Echocardiography in Chagas heart disease. *Circulation*. 2007; 115(9):1124–31. doi: [10.1161/CIRCULATIONAHA.106.627323](https://doi.org/10.1161/CIRCULATIONAHA.106.627323) PMID: [17339570](https://pubmed.ncbi.nlm.nih.gov/17339570/)
23. Rocha MO, Nunes MC, Ribeiro AL. Morbidity and prognostic factors in chronic chagasic cardiopathy. *Mem Inst Oswaldo Cruz*. 2009; 104 Suppl 1:159–66.
24. Nunes MC, Barbosa MM, Ribeiro AL, Colosimo EA, Rocha MO. Left atrial volume provides independent prognostic value in patients with Chagas cardiomyopathy. *J Am Soc Echocardiogr*. 2009; 22(1):82–8.
25. Lima MM, Nunes MC, Rocha MO, Beloti FR, Alencar MC, Ribeiro AL. Left ventricular diastolic function and exercise capacity in patients with Chagas cardiomyopathy. *Echocardiography*. 2010; 27(5):519–24. doi: [10.1111/j.1540-8175.2009.01081.x](https://doi.org/10.1111/j.1540-8175.2009.01081.x) PMID: [20412275](https://pubmed.ncbi.nlm.nih.gov/20412275/)
26. Lima MM, Nunes MC, Nascimento B, Costa HS, Sousa LA, Teixeira AL, et al. Improvement of the functional capacity is associated with BDNF and autonomic modulation in Chagas disease. *Int J Cardiol*. 2013; 167(5):2363–6. doi: [10.1016/j.ijcard.2012.11.055](https://doi.org/10.1016/j.ijcard.2012.11.055) PMID: [23232458](https://pubmed.ncbi.nlm.nih.gov/23232458/)
27. Nunes MC, Reis RC, Colosimo EA, Ribeiro AL, Barbosa FB, da Silva JL, et al. Risk estimation approach in Chagas disease is still needed. *Int J Cardiol*. 2011; 147(2):294–6. doi: [10.1016/j.ijcard.2010.12.044](https://doi.org/10.1016/j.ijcard.2010.12.044) PMID: [21194765](https://pubmed.ncbi.nlm.nih.gov/21194765/)
28. Nunes MP, Colosimo EA, Reis RC, Barbosa MM, da Silva JL, Barbosa F, et al. Different prognostic impact of the tissue Doppler-derived E/e' ratio on mortality in Chagas cardiomyopathy patients with heart failure. *J Heart Lung Transplant*. 2012; 31(6):634–41. doi: [10.1016/j.healun.2012.01.865](https://doi.org/10.1016/j.healun.2012.01.865) PMID: [22305956](https://pubmed.ncbi.nlm.nih.gov/22305956/)
29. Wu L, Ong S, Talor MV, Barin JG, Baldeviano GC, Kass DA, et al. Cardiac fibroblasts mediate IL-17A-driven inflammatory dilated cardiomyopathy. *J Exp Med*. 2014; 211(7):1449–64. doi: [10.1084/jem.20132126](https://doi.org/10.1084/jem.20132126) PMID: [24935258](https://pubmed.ncbi.nlm.nih.gov/24935258/)
30. Nogueira LG, Santos RH, Fiorelli AI, Mairena EC, Benvenuti LA, Bocchi EA, et al. Myocardial gene expression of T-bet, GATA-3, Ror- γ t, FoxP3, and hallmark cytokines in chronic Chagas disease cardiomyopathy: an essentially unopposed TH1-type response. *Mediators Inflamm*. 2014; 2014:914326. doi: [10.1155/2014/914326](https://doi.org/10.1155/2014/914326) PMID: [25152568](https://pubmed.ncbi.nlm.nih.gov/25152568/)
31. Iwakura Y, Ishigame H, Saijo S, Nakae S. Functional specialization of interleukin-17 family members. *Immunity*. 2011; 34(2):149–62. doi: [10.1016/j.immuni.2011.02.012](https://doi.org/10.1016/j.immuni.2011.02.012) PMID: [21349428](https://pubmed.ncbi.nlm.nih.gov/21349428/)
32. Duerr RH, Taylor KD, Brant SR, Rioux JD, Silverberg MS, Daly MJ, et al. A genome-wide association study identifies IL23R as an inflammatory bowel disease gene. *Science*. 2006; 314(5804):1461–3. doi: [10.1126/science.1135245](https://doi.org/10.1126/science.1135245) PMID: [17068223](https://pubmed.ncbi.nlm.nih.gov/17068223/)
33. Zhu S, Qian Y. IL-17/IL-17 receptor system in autoimmune disease: mechanisms and therapeutic potential. *Clin Sci (Lond)*. 2012; 122(11):487–511.
34. Garg AV, Ahmed M, Vallejo AN, Ma A, Gaffen SL. The deubiquitinase A20 mediates feedback inhibition of interleukin-17 receptor signaling. *Sci Signal*. 2013; 6(278):ra44. doi: [10.1126/scisignal.2003699](https://doi.org/10.1126/scisignal.2003699) PMID: [23737552](https://pubmed.ncbi.nlm.nih.gov/23737552/)

35. Song X, Qian Y. The activation and regulation of IL-17 receptor mediated signaling. *Cytokine*. 2013; 62(2):175–82. doi: [10.1016/j.cyto.2013.03.014](https://doi.org/10.1016/j.cyto.2013.03.014) PMID: [23557798](https://pubmed.ncbi.nlm.nih.gov/23557798/)
36. Song X, Dai D, He X, Zhu S, Yao Y, Gao H et al. Growth Factor FGF2 Cooperates with Interleukin-17 to Repair Intestinal Epithelial Damage. *Immunity*. 2015; 43(3):488–501. doi: [10.1016/j.immuni.2015.06.024](https://doi.org/10.1016/j.immuni.2015.06.024) PMID: [26320657](https://pubmed.ncbi.nlm.nih.gov/26320657/)
37. Sousa GR, Gomes JA, Fares RC, Damasio MP, Chaves AT, Ferreira KS, et al. Plasma cytokine expression is associated with cardiac morbidity in chagas disease. *PLoS One*. 2014; 9(3):e87082. doi: [10.1371/journal.pone.0087082](https://doi.org/10.1371/journal.pone.0087082) PMID: [24603474](https://pubmed.ncbi.nlm.nih.gov/24603474/)
38. León B, Lund FE. IL-17-producing B cells combat parasites. *Nat Immunol*. 2013; 14(5):419–21. doi: [10.1038/ni.2593](https://doi.org/10.1038/ni.2593) PMID: [23598388](https://pubmed.ncbi.nlm.nih.gov/23598388/)