

ARTICLE

Received 11 Nov 2016 | Accepted 27 Jan 2017 | Published 16 Mar 2017

DOI: 10.1038/ncomms14785

OPEN

Enhancing CO₂ electrolysis through synergistic control of non-stoichiometry and doping to tune cathode surface structures

Lingting Ye^{1,*}, Minyi Zhang^{2,*}, Ping Huang¹, Guocong Guo², Maochun Hong², Chunsen Li², John T.S. Irvine^{1,3} & Kui Xie¹

Sustainable future energy scenarios require significant efficiency improvements in both electricity generation and storage. High-temperature solid oxide cells, and in particular carbon dioxide electrolyzers, afford chemical storage of available electricity that can both stabilize and extend the utilization of renewables. Here we present a double doping strategy to facilitate CO₂ reduction at perovskite titanate cathode surfaces, promoting adsorption/activation by making use of redox active dopants such as Mn linked to oxygen vacancies and dopants such as Ni that afford metal nanoparticle exsolution. Combined experimental characterization and first-principle calculations reveal that the adsorbed and activated CO₂ adopts an intermediate chemical state between a carbon dioxide molecule and a carbonate ion. The dual doping strategy provides optimal performance with no degradation being observed after 100 h of high-temperature operation and 10 redox cycles, suggesting a reliable cathode material for CO₂ electrolysis.

¹Key Lab of Design & Assembly of Functional Nanostructure, Fujian Institute of Research on the Structure of Matter, Chinese Academy of Sciences, Fuzhou, Fujian 350002, China. ²State Key Lab of Structural Chemistry, Fujian Institute of Research on the Structure of Matter, Chinese Academy of Sciences, Fuzhou, Fujian 350002, China. ³School of Chemistry, University of St Andrews, St Andrews, Fife KY16 9ST, Scotland, UK. *These authors contributed equally to this work. Correspondence and requests for materials should be addressed to C.L. (email: chunsen.li@fjirsm.ac.cn) or to J.T.S.I. (email: jtsi@st-andrews.ac.uk) or to K.X. (email: kxie@fjirsm.ac.cn).

Solid oxide electrolyzers (SOEs) have been attracting great interest due to their high efficiencies in converting low-carbon fuels from renewable electrical energy^{1,2}. They can exploit available high-temperature heat streams from nuclear plants or exhaust industry heat to maximize electrical efficiency and both thermodynamic and kinetic advantages can be anticipated because of the high operating temperatures^{3,4}. In SOEs, using an externally applied potential, CO₂ can be electrochemically converted into CO and O²⁻ at the cathode, while the generated O²⁻ ions transport through the electrolyte to the anode to form O₂ gas^{1,5,6}.

Currently, nickel/yttria-stabilized zirconia (Ni-YSZ) composites are the cathode of choice for high-temperature SOEs^{5,6}. In such a composite, the percolating networks of both Ni and YSZ provide sufficient electronic and ionic conductivity, while the Ni guarantees high electrocatalytic activity towards the reduction reaction. Long-term operation with Ni-YSZ is feasible only in CO/CO₂ gas mixtures, where the presence of CO maintains a reducing atmosphere⁷. Under realistic conditions however, reduction-oxidation (redox) cycles of Ni will inevitably occur in the cathode, ultimately leading to electrode degradation and delamination^{8,9}. In contrast, redox-stable ceramic cathodes would offer a promising alternative for direct high-performance CO₂ electrolysis. Especially materials exhibiting n-type conduction properties are expected to demonstrate improved conductivity under the strongly reducing cathode conditions. Perovskite-type doped strontium titanates, (La,Sr)TiO_{3+δ} (LST_{O+}), are such materials, due to the reducibility of Ti⁴⁺ to Ti³⁺, and have therefore attracted a significant amount of interest within the field of SOE and fuel cell electrodes^{10,11}. A composite cathode based on La_{0.2}Sr_{0.8}TiO_{3.1} was shown to be well adapted to direct CO₂ electrolysis¹², because the titanate is partially electrochemically reduced (Ti⁴⁺ → Ti³⁺) at potentials required for CO₂ reduction and the n-type electronic conduction is accordingly enhanced, but cathode performance for CO₂ electrolysis is still limited by insufficient electro-catalytic activity and the weak high-temperature chemical adsorption of reactants¹³.

The incorporation of catalytically active metal nanoparticles through impregnation methods has proven to be an effective approach to enhance ceramic electrode activity¹⁴. However, long-term stability of nanocatalysts at high operating temperature remains a major challenge¹⁵ due to particle agglomeration leading to performance degradation^{16,17}. An alternative method is to incorporate the metal element as a dopant within the host lattice during the synthesis of the catalyst in air, which is then exsolved at the surface in the form of catalytically active metallic nanoparticles under reducing conditions. If the composition and conditions are carefully chosen to avoid full decomposition, anchored nanoparticles can be grown on the cathode. Any possible agglomeration of exsolved Ni nanoparticles on the substrate surface can be remedied by periodically cycling from oxidizing to reducing conditions¹¹. We have recently demonstrated the *in situ* growth of metal nanoparticles directly from a perovskite backbone support through control of composition, particularly by tuning deviations from the ideal ABO₃ stoichiometry¹⁸. The exsolved metal nanoparticles exhibit enhanced high-temperature stability and improved coking resistance, due to a stronger metal-oxide interface resulting from an anchoring effect with the parent perovskite. The key surface effects and defect interactions of exsolution-based perovskite materials are expected to demonstrate promising catalytic functionalities¹⁹.

High-temperature CO₂ electrolysis suffers from poor adsorption and activation of the reactant, due to the linear molecules lacking polarity. This is believed to cause local starvation of

CO₂ in SOE cathodes^{1,3,7,12}. Currently, preferential chemical adsorption of CO₂ on solid oxide materials is based on grafting solid amines, which produces an alkaline surface. However, the desorption temperature is normally below 500 °C, which is far below typical electrolyser operating temperatures^{20,21}. Surface oxygen vacancies created next to redox active sites on solid oxide materials may provide alternative sites for CO₂ chemisorption and are expected to significantly elevate the onset temperature of chemical desorption of CO₂, which would benefit cathode performance²². Combining oxygen vacancies and exsolved catalytic nanoparticles should finally produce an active interface for electrocatalytic CO₂ reduction.

In this work, active nanostructures are investigated on titanate surface under differing regimes of perovskite non-stoichiometry. The exsolved metal nanoparticles coupled with tailored oxygen vacancies through Cr and Mn substitution produce a strongly interactive interface. Chemical adsorption/activation of CO₂ is investigated on these titanate surfaces as well as their effectiveness as cathode materials for indirect CO₂ electrolysis.

Results

Crystal structure and microstructure. Different perovskite-defect chemistries and their combinations have been investigated, (oxygen excess, cation deficient and Cr/Mn doped) seeking to optimize electrolysis cathode properties. X-ray diffraction analysis confirms the synthesis of pure-phase La_{0.2}Sr_{0.8}Ti_{1.0}O_{3+δ} (LST_{O+}), La_{0.2}Sr_{0.8}Ti_{0.9}Cr_{0.1}O_{3+δ} (LST_{CO+}), La_{0.2}Sr_{0.8}Ti_{0.9}Mn_{0.1}O_{3+δ} (LSTM_{O+}), (La_{0.2}Sr_{0.8})_{0.95}Ti_{0.9}Mn_{0.1}O_{3+δ} (LSTM_{A-}), (La_{0.2}Sr_{0.8})_{0.95}Ti_{0.9}Cr_{0.1}O_{3-δ} (LST_{CA-}), (La_{0.2}Sr_{0.8})_{0.95}Ti_{0.85}Cr_{0.1}Ni_{0.05}O_{3+δ} (LSTCN_{A-}) and (La_{0.2}Sr_{0.8})_{0.95}Ti_{0.85}Mn_{0.1}Ni_{0.05}O_{3+δ} (LSTMN_A) powders (Fig. 1). The patterns are shown in Supplementary Section (Supplementary Fig. 1a,b). All oxidized samples could be indexed assuming a cubic symmetry, with space group *Pm-3m*. As shown in Supplementary Figs 1 and 2 and Supplementary Table 1, on reduction, a unit cell expansion is observed due to the reductions of Ti, Mn and Cr (from M⁴⁺ to M^{3+/2+}). The doping and reduction of Mn/Cr should be coupled with the creation of additional oxygen vacancies in the titanate, which in turn should facilitate CO₂ chemisorption. The LST_{O+} is oxygen-excess while the oxygen with δ amount is present in the form of oxygen interstitial in perovskite oxide. However, the (La,Sr)(Ti,M)O_{3+δ} (M = Mn, Cr) has redox-active dopants such as Mn linked to oxygen vacancies even though the interstitial oxygen might be still present after reduction. The nickel containing compounds LSTMN_{A-} and LSTCN_{A-} exhibit nickel exsolution on reduction, as observed in X-ray diffraction, X-ray photoelectron spectroscopy (XPS) and microscopy. Supplementary Fig. 2 shows the emergence of a peak at 2θ = 44.5°, corresponding to cubic metallic nickel. Due to the A-site deficiency, the perovskite structure is retained for the titanate phase, suggesting structural redox stability. XPS on oxidized and reduced samples shows that nickel is only present as Ni²⁺ in the former, whereas metallic Ni⁰ is additionally present in the latter, corroborating the X-ray diffraction results. XPS furthermore confirms the presence of the reduced species Ti³⁺, Mn³⁺ and Cr^{3+/2+} within the reduced titanates (Supplementary Figs 3 and 4). Figure 2a,b present scanning electron microscopic micrographs of sintered LSTMN_{A-} pellets after reduction, showing uniform titanate surface decoration with Ni nanoparticles. The nanoparticles exist within a narrow size distribution, with an average of 60 nm, which should prove highly active as electrocatalyst. The growth of these Ni nanoparticles was studied using high-resolution transmission electron microscopy. From the lattice spacings in Fig. 2c,d, 0.275 and 0.203 nm, it becomes clear that two distinct phases have emerged, that is, reduced titanate (110) and metallic nickel (111), respectively.

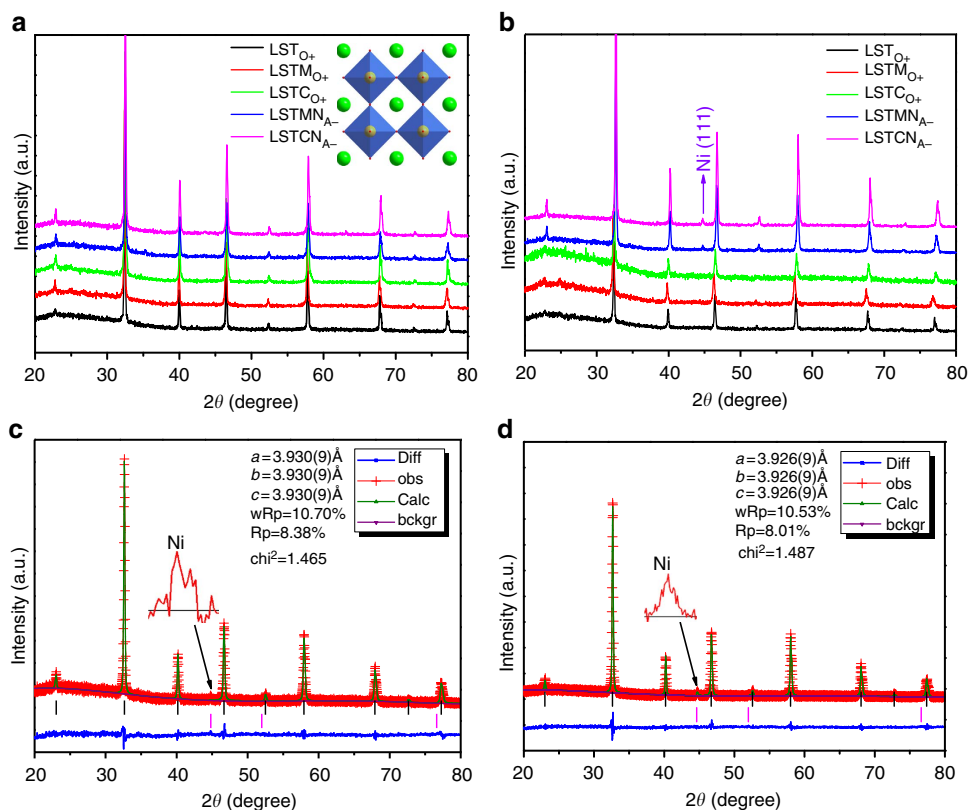


Figure 1 | X-ray diffraction patterns for a series of samples. X-ray diffraction of (a) oxidized and (b) reduced LSTO_{+} , LSTM_{O+} , LSTCO_{+} , LSTMN_{A-} and LSTCN_{A-} ; X-ray diffraction Rietveld refinement of reduced (c) LSTMN_{A-} and (d) LSTCN_{A-} . bckgr, background; calc, calculated; diff, difference; obs, observed.

A clear hetero-junction is visible between the two phases, suggesting a strong interaction between the titanate backbone and exsolved nanoparticles. This anchoring effect is expected to provide enhanced thermal stability of the catalyst, preventing the severe long-term agglomeration which is commonly observed for impregnated catalysts²³. Regeneration of the nanoparticles is also possible through periodic redox cycling. Besides, selected-area electron diffraction analysis for the reduced LSTMN_{A-} is shown in Supplementary Fig. 5, it shows that LSTMN_{A-} is able to produce the polycrystalline structure.

Oxygen nonstoichiometry and conductivity. Thermogravimetric analysis on the various titanates, as shown in Supplementary Fig. 6 and Supplementary Table 2, suggests varying degrees of oxygen stoichiometry, depending on titanium substitution with Cr/Mn/Ni. Whereas LSTO_{+} shows a change of 0.032 mol of oxygen upon oxidation/reduction, the Cr- and Mn-substituted stoichiometries release/absorb 0.039 and 0.056 mol of lattice oxygen, confirming the reducibility of the Mn and consequent formation of additional oxygen vacancies upon reduction. However, the Cr^{3+} in titanate lattice is less reducible that leads to similar oxygen absorption for reduced LSTO_{+} and LSTCO_{+} samples. And strong reduction only produces partial transition of Cr^{3+} to Cr^{2+} as confirmed by the larger weight gains in thermogravimetric analysis (TGA) in Supplementary Fig. 6c. The weight changes increase even further upon nickel introduction and it is suggested that lattice nickel was partially reduced to metallic nickel during reduction at 800 °C for 20 h. This would result in reduced titanate with Ni present as secondary phase. Assuming that the majority of metallic Ni resides on the titanate

surface, it is clear that an active nanostructure is formed with the presence of Ni nanoparticles coupled with a large concentration of oxygen vacancies.

The varying oxygen contents and abilities to store and release lattice oxygen also manifest themselves in the oxide ionic conductivities of the titanates. The ion conductivity of sintered pellets is tested using the electron-blocking electrode method for the reduced states²⁴. As shown in Supplementary Fig. 7, reduced LSTO_{+} has the lowest ionic conductivity, reaching $6.8 \times 10^{-4} \text{ S cm}^{-1}$ at 800 °C. Upon substitution with Cr/Mn and consequently increasing oxygen vacancy concentration under reducing conditions, this increases by an order of magnitude to $6.1\text{--}6.3 \times 10^{-3} \text{ S cm}^{-1}$. Introducing A-site deficiency and nickel on the B-site causes an additional 30% increase to $8.6\text{--}9.3 \times 10^{-3} \text{ S cm}^{-1}$ under identical conditions. These experimental observations are further substantiated by theoretical calculations on oxide ion migration in simplified SrTiO_3 . These reveal that oxide ion transport by a vacancy-mediated mechanism is much more favourable than through an interstitial one; as shown in Supplementary Figs 7 and 8, the energy barrier for the former is 0.42 eV, as compared to 5 eV for the latter. This is to be expected for the dense perovskite structure and confirms that creating additional oxygen ion vacancies should indeed be beneficial for ionic transport by increasing the concentration of charge carriers.

CO₂ adsorption and activation. The chemical adsorption of CO₂ molecules on reduced titanate samples was investigated by *in situ* infrared spectroscopy. The infrared scans for all the samples without CO₂ adsorption at room temperature are shown

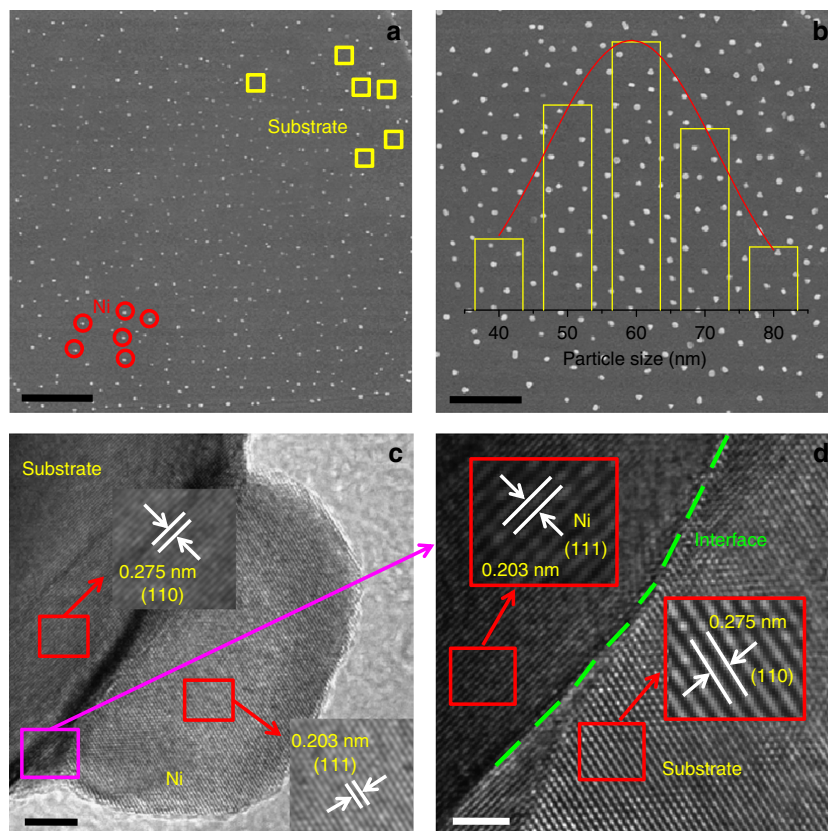


Figure 2 | Scanning electron microscopy and high-resolution transmission electron microscopy for LSTMN_{A-} sample. (a) Scanning electron microscopic results for the reduced LSTMN_{A-}, Scale bars, 5 μm; (b) Ni nanoparticles size distribution of the reduced LSTMN_{A-} inset, Scale bars, 3 μm; (c) High-resolution transmission electron microscopic results for the reduced LSTMN_{A-}, Scale bars, 5 nm; (d) the legible hetero-junction of Ni and substrate along the corresponding to pink square shown in (c), Scale bars, 2 nm.

in Supplementary Fig. 9a,b, in which no CO₂ or carbonate species (CO₃²⁻) signals are observed. In contrast, all samples with adsorbed CO₂ show absorption signals in two distinct infrared bands at room temperature in Supplementary Fig. 9c,d, that is, 2,380–2,300 cm⁻¹, which is associated with CO₂ molecules²⁵ on the sample surface, and 1,500–1,430 cm⁻¹, which is typically observed for CO₃²⁻ (ref. 26). The chemisorbed carbon dioxide on the titanate surface is therefore assumed to be intermediate between molecular CO₂ and carbonate ions. As expected from the concentration of oxygen ion vacancies, which should translate into an active oxide surface, the strongest infrared absorption is observed for LSTMN_{A-} and LSTCN_{A-}. To test the ability to adsorb CO₂ at elevated temperature, LSTMN_{A-} was subjected to *in situ* infrared tests between 400 and 1,200 °C. As Fig. 3a,b reveal, both infrared bands remain visible up to 1,200 °C, suggesting that both CO₂ and carbonate species remain adsorbed, due to strong bonding with this titanate's surface. Temperature Programmed Desorption sheds further light on the adsorption/desorption behaviour. Figure 3c shows how physisorbed CO₂ is desorbed below 100 °C, whereas chemisorbed CO₂ is retained until much higher temperatures. For Cr/Mn-substituted titanate, the strongest desorption is extended to approximately 800 °C, with concomitant increased adsorption capacity by an order of magnitude as compared to LSTO₊ (0.043 versus 0.0056 ml m⁻², respectively). These results are further corroborated by TGA in pure Ar atmosphere on reduced titanate samples that have subsequently been treated in CO₂ at room temperature for 60 min, shown in Supplementary Fig. 9e. Much enhanced weight loss and continued desorption between 800 and 1,200 °C is observed for all Cr/Mn-substituted samples as

compared to LSTO₊, which desorbs almost all CO₂ below 800 °C. This is obviously also much improved when compared to amine-grafted oxides, which typically desorb below 500 °C (refs 20,21).

Theoretical calculations were carried out to construct a tentative mechanism for CO₂ adsorption and activation on the titanate surface in conjunction with exsolved Ni nanoparticles and oxide vacancy defects. Before considering the presence and effect of such oxide vacancies however, we first study the CO₂ chemisorption behaviour on the boundary of a Ni cluster and SrTiO₃ pristine surface (110), see Supplementary Fig. 10. As shown in Fig. 4a and Supplementary Fig. 11c, upon adsorption, low energy scenarios are found for CO₂ forming a bidentate configuration including a carbonate formation (Supplementary Fig. 11a). Lowest adsorption energies of -2.23 and -2.60 eV are calculated for the configurations in which the carbon atom of CO₂ binds with a Ni atom from the cluster, whereas one of CO₂'s oxygen atoms (O1) attaches to an *hcp* site on the titanate surface, interacting with two Sr atoms and one Ti atom. With a calculated bond length of 1.906 Å for C-Ni, a strong interaction is expected. The Sr-O1 and Ti-O1 distances are 2.490 Å and 2.194 Å, respectively, which differ substantially from bulk strontium titanate (2.767 Å for Sr-O (ref. 27) and 1.952 Å for Ti-O from experimental observations²⁸). The C-O1 bond length is elongated to 1.403 Å and the O-C-O angle is bent to 120.9° relative to the gaseous values of 1.18 Å and 180.0°, respectively. This suggests that apart from a strong interaction between adsorbed CO₂ and the Ni/SrTiO₃ surface, the distorted CO₂ seems highly activated. Furthermore, by binding another CO₂ molecule to the previously adsorbed oxygen atoms of CO₂, such as O2 atom in Fig. 4a, these bidentate configurations could

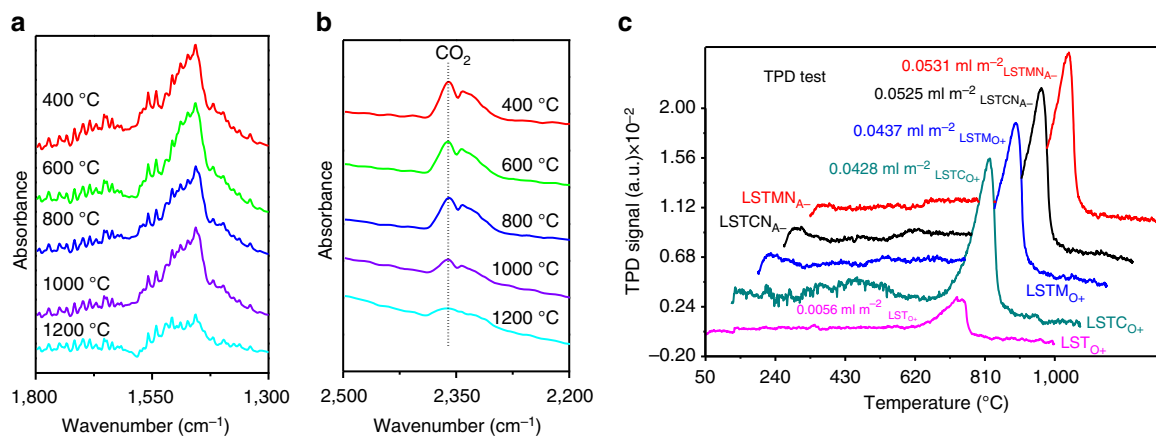


Figure 3 | Chemical adsorption of CO₂ for a series of samples. (a,b) *In situ* infrared spectroscopy of CO₂ adsorbed on the reduced LSTMN_{A-} from 400 to 1,200 °C; (c) Temperature Programmed Desorption (TPD) test of CO₂ on the reduced samples from 50 to 1,000 °C in pure CO₂.

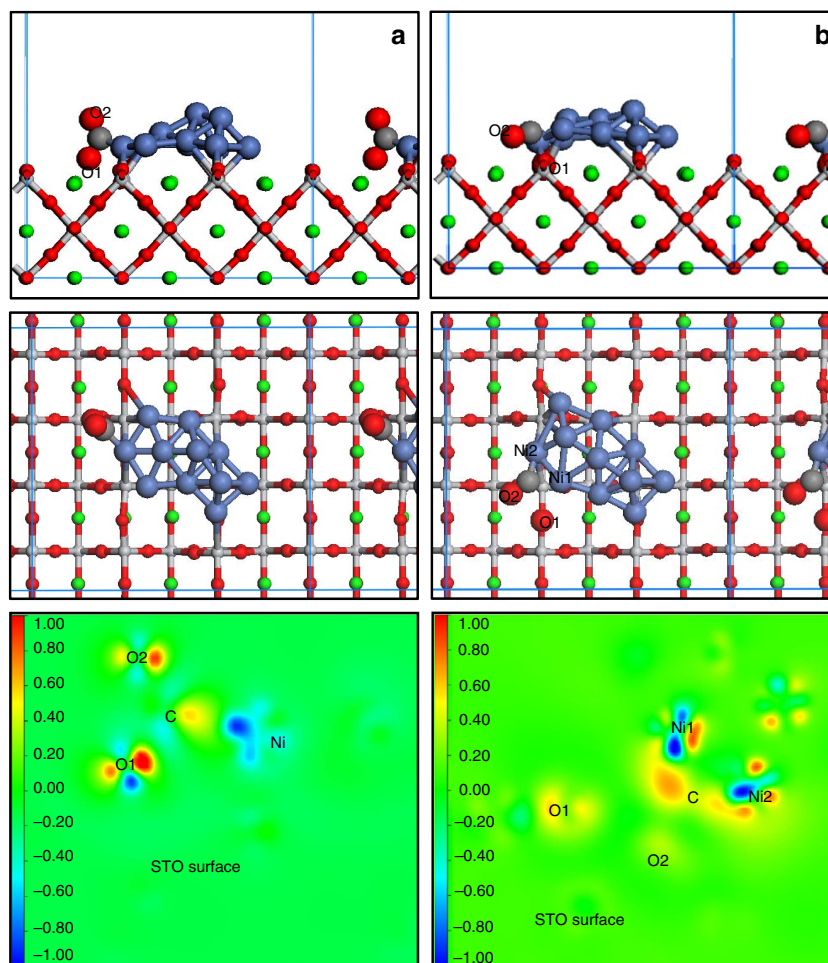


Figure 4 | Theoretical calculations. Different adsorption configurations of CO₂ on (a) the (110) Ni/STO system surface and (b) defected site of the (110) Ni/STO system surface. The upper panels show side views while the middle panels give top-down views. Unit cells used in the calculations are marked by blue rectangles. Nickel is blue, strontium is green, titanium is pale, oxygen is red and carbon is grey. The bottom panels show contour plots of the electronic charge density difference for CO₂ adsorption on the (110) Ni/STO system surface (bottom left) and defected site of the (110) Ni/STO system surface (bottom right).

be basic configurations to further generate carbonate, which may play a role as shown in our infrared experimental results. Contour plots shown in Fig. 4a indicate that the Ni cluster donates electron

charge to the adsorbed CO₂ molecule; the charge density changes take place predominantly within the 2*p* orbitals of C, O, Ni and relevant surface atoms. The electrostatic interactions between

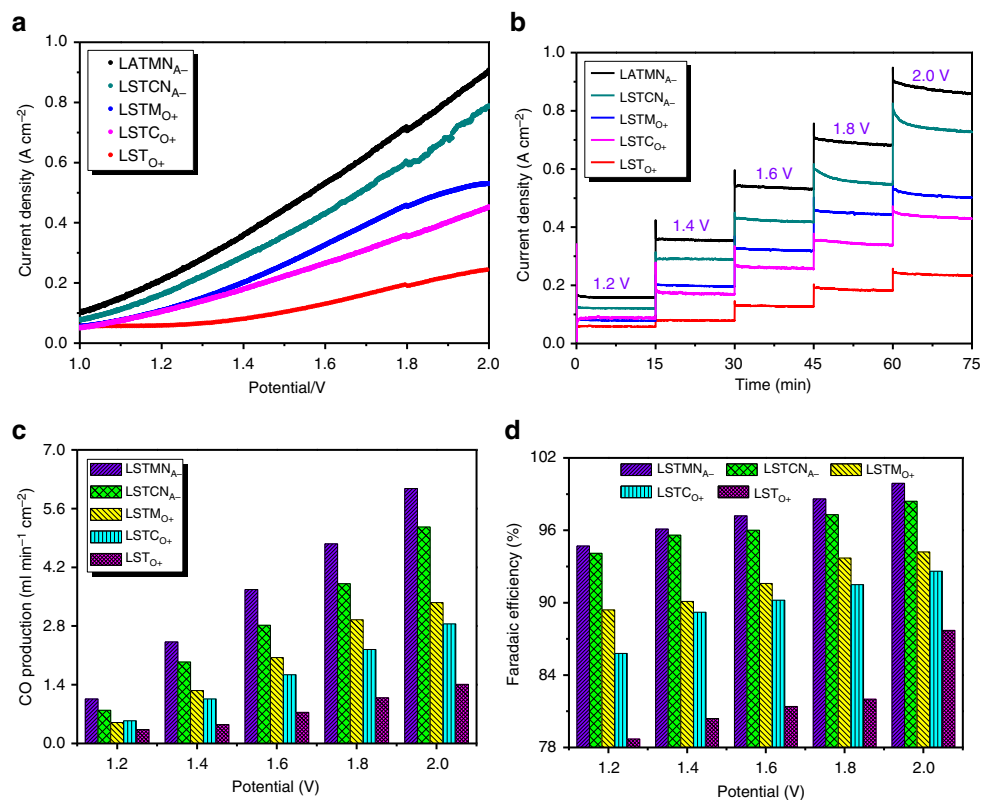


Figure 5 | Electrolysis performance. (a) I - V curves of CO_2 electrolysis with different cathodes at $800\text{ }^\circ\text{C}$; (b) short-term performances of CO_2 electrolysis at different voltages; (c) CO production and (d) current efficiency with different cathodes.

surface and CO_2 , which would also affect the observed bidentate configuration, clearly suggest a strong chemical adsorption and activation, promoted by Ni exsolution.

Next we consider adsorption onto a titanate surface that includes oxygen vacancy defects. We use a simplified scenario of a single oxide vacancy site residing in close proximity to the Ni cluster on the SrTiO_3 (110) surface and simulate how CO_2 would approach and adsorb onto this site as shown in Supplementary Fig. 12. A distinctly different adsorption mechanism emerges now as compared to the vacancy-free titanate surface: in this scenario the CO_2 molecule exothermally dissociates into a CO moiety binding to the Ni cluster and an oxygen atom occupying the vacant surface site, with greatly enlarging of C-O1 distance from gaseous value of 1.177 to 3.265 Å (Fig. 4b and Supplementary Fig. 12). The carbon atom of CO_2 is now binding to two Ni atoms, with bond lengths C-Ni1 of 1.820 and C-Ni2 of 1.889 Å. The calculated Sr-O1 and Ti-O1 bond distances are 2.728–2.783 Å and 2.020–1.880 Å, respectively, which are very similar to those observed in bulk SrTiO_3 (2.767 and 1.952 Å, respectively)^{27,28}, indeed suggesting that O1 is now occupying the oxygen vacancy. The contour plot for this scenario shows that charge density is increased on 2p orbital of C and O1 atom and depleted on Ni 4s orbitals. These charge rearrangements mainly result from the C-O1 bond breaking that causes charge transfer back to the C and O1 atom, respectively. Moreover, electron charge density is also donated by the Ni cluster to the C 2p orbital, albeit originating from Ni 4s orbitals instead. The 2p orbital of O1 accepts charge density from the neighbouring surface atoms. These calculations strongly suggest a synergistic effect from the exsolved Ni cluster and neighbouring oxygen vacancy, causing promotion of the adsorbed CO_2 molecule by effectively weakening the C-O1 bond. This

promotion effect is expected to translate itself into a very catalytically active surface for CO_2 electrolysis.

Electrolysis performance. Both symmetrical and full electrolyser cells were fabricated, comprising composite titanate cathodes with $\text{Ce}_{0.8}\text{Sm}_{0.2}\text{O}_{2-\delta}$. As can be seen in Supplementary Fig. 13, the cells contain dense electrolytes as well as porous electrodes of around 10 μm in thickness. AC impedance was performed on the symmetrical cells to assess the electrode polarization behaviour under reducing conditions, with pH_2 ranging from 0.20 to 1.0 bar. For all titanates, it was found that the series resistance R_s was dominated by the YSZ electrolyte, confirming sufficient electronic conductivity as provided by the reduced titanates. And the ohmic resistance of electrode is negligible because the conductivity of electrodes is 3–4 orders of magnitude higher than that of the YSZ electrolyte. The electrode performance of all materials improved significantly with increasing pH_2 from 0.20 to 1.0 bar, with polarization resistances decreasing by 50–60%. $\text{LST}_{\text{O}+}$ was found to have the poorest performance (5.32–2.00 Ωcm^2), whereas Cr/Mn-substituted and Ni-exsolving $\text{LSTMN}_{\text{A}-}$ and $\text{LSTCN}_{\text{A}-}$ cathodes perform best, with the lowest R_p recorded of 0.67 Ωcm^2 at $800\text{ }^\circ\text{C}$ and $\text{pH}_2 = 1.0$ bar. The symmetrical cell results are summarized in Supplementary Figs 14–16.

The cells were used to perform direct CO_2 electrolysis under varying applied voltages, ranging from 1.2 to 2.0 V at $800\text{ }^\circ\text{C}$. The open circuit voltage of the cells was established by exposing the cathode and anode to 100% H_2 and static air, respectively, and was found to reach 1.1 V, indicating good gas separation by the cells. Typical current-voltage (I - V) curves for the various cathode materials in direct CO_2 electrolysis mode can be found in Fig. 5. As expected from the previous findings, $\text{LST}_{\text{O}+}$ shows the poorest

Table 1 | Performance with different cathodes.

| Cathode | Applied bias (V) | | | | |
|--|------------------|------|------|------|------|
| | 1.2 | 1.4 | 1.6 | 1.8 | 2.0 |
| <i>LST_{O+}</i> | | | | | |
| Current density (A cm ⁻²) | 0.06 | 0.08 | 0.13 | 0.19 | 0.23 |
| CO production (ml min ⁻¹ cm ⁻²) | 0.33 | 0.45 | 0.74 | 1.09 | 1.41 |
| Faradaic efficiency (%) | 78.7 | 80.4 | 81.4 | 82.0 | 87.7 |
| <i>LSTM_{O+}</i> | | | | | |
| Current density (A cm ⁻²) | 0.08 | 0.20 | 0.32 | 0.45 | 0.51 |
| CO production (ml min ⁻¹ cm ⁻²) | 0.50 | 1.26 | 2.05 | 2.95 | 3.36 |
| Faradaic efficiency (%) | 89.4 | 90.1 | 91.6 | 93.7 | 94.2 |
| <i>LSTC_{O+}</i> | | | | | |
| Current density (A cm ⁻²) | 0.09 | 0.17 | 0.26 | 0.35 | 0.44 |
| CO production (ml min ⁻¹ cm ⁻²) | 0.54 | 1.06 | 1.64 | 2.24 | 2.85 |
| Faradaic efficiency (%) | 85.8 | 89.2 | 90.2 | 91.5 | 92.6 |
| <i>LSTM_{A-}</i> | | | | | |
| Current density (A cm ⁻²) | 0.10 | 0.22 | 0.36 | 0.51 | 0.66 |
| CO production (ml min ⁻¹ cm ⁻²) | 0.63 | 1.39 | 2.34 | 3.41 | 4.43 |
| Faradaic efficiency (%) | 90.1 | 90.4 | 93.0 | 95.6 | 96.0 |
| <i>LSTC_{A-}</i> | | | | | |
| Current density (A cm ⁻²) | 0.09 | 0.20 | 0.32 | 0.45 | 0.55 |
| CO production (ml min ⁻¹ cm ⁻²) | 0.56 | 1.26 | 2.06 | 2.98 | 3.67 |
| Faradaic efficiency (%) | 89.0 | 90.1 | 92.1 | 94.7 | 95.4 |
| <i>LSTMN_{A-}</i> | | | | | |
| Current density (A cm ⁻²) | 0.16 | 0.36 | 0.54 | 0.69 | 0.87 |
| CO production (ml min ⁻¹ cm ⁻²) | 1.06 | 2.42 | 3.67 | 4.76 | 6.08 |
| Faradaic efficiency (%) | 94.7 | 96.1 | 97.2 | 98.6 | 99.9 |
| <i>LSTCN_{A-}</i> | | | | | |
| Current density (A cm ⁻²) | 0.12 | 0.29 | 0.42 | 0.56 | 0.75 |
| CO production (ml min ⁻¹ cm ⁻²) | 0.79 | 1.94 | 2.82 | 3.81 | 5.16 |
| Faradaic efficiency (%) | 94.1 | 95.6 | 96.0 | 97.3 | 98.4 |

LST_{O+}, La_{0.2}Sr_{0.8}Ti_{1.0}O_{3+δ}; *LSTC_{A-}*, (La_{0.2}Sr_{0.8})_{0.95}Ti_{0.9}Cr_{0.1}O_{3-δ}; *LSTC_{O+}*, La_{0.2}Sr_{0.8}Ti_{0.9}Cr_{0.1}O_{3+δ}; *LSTMN_{A-}*, (La_{0.2}Sr_{0.8})_{0.95}Ti_{0.85}Mn_{0.1}Ni_{0.05}O_{3+δ}; *LSTM_{A-}*, (La_{0.2}Sr_{0.8})_{0.95}Ti_{0.9}Mn_{0.1}O_{3+δ}; *LSTM_{O+}*, La_{0.2}Sr_{0.8}Ti_{0.9}Mn_{0.1}O_{3+δ}; *LSTMN_{A-}*, (La_{0.2}Sr_{0.8})_{0.95}Ti_{0.85}Mn_{0.1}Ni_{0.05}O_{3+δ}. Comparison of CO₂ electrolysis with different cathodes under applied biases.

performance, reaching a maximum current density of 0.24 A cm⁻² at 2.0 V. Improved performance is observed for Mn/Cr-substituted compositions, which can be attributed to enhanced CO₂ adsorption and activation at high temperatures. *LSTM_{O+}* reaches a maximum current density of 0.53 A cm⁻² at 2.0 V. The nickel exsolving compositions show a further improvement, with maximum current densities of 0.91 and 0.79 A cm⁻² at 2.0 V for *LSTMN_{A-}* and *LSTCN_{A-}*, respectively. As the potentiostatic measurement in Fig. 5b shows, performances tail off somewhat over time, but a stable current density of 0.87 A cm⁻² seems to be attained for *LSTMN_{A-}* at 2.0 V, a factor 3–4 times higher than observed for *LST_{O+}*. Further evidence of these titanates' suitability to reduce CO₂ at the cathode comes from inspecting the rate of CO production as measured by gas chromatography and corresponding Faradaic efficiencies at different applied voltages, shown in Fig. 5c,d. *LSTMN_{A-}* and *LSTCN_{A-}* yield 6.08 and 5.16 ml min⁻¹cm⁻² of CO at 2.0 V and 800 °C, respectively, corresponding to Faradaic efficiencies of 99.9 and 98.4%, respectively. When compared to unmodified *LST_{O+}*, this constitutes a 400% improvement of performance. The effect of Ni exsolution yields a performance boost of 75–85% when comparing with Cr/Mn substitution only. Results have been summarized in Table 1.

One aspect that has been ignored so far is the effect of A-site deficiency on electrode performance. To enhance Ni exsolution,

5% A-site deficiency was introduced in the *LSTMN_{A-}* and *LSTCN_{A-}* materials, but the A-site deficiency itself may enhance electrode performance. The oxygen interstitial is present in *LST_{O+}*, *LSTM_{O+}* and *LSTC_{O+}*, though the oxygen vacancies are created and linked to redox active dopants such as Mn/Cr after reduction. However, the A-site deficiency would further produce higher oxygen vacancy concentration that may be positive to electrode activity enhancement. To study this effect, Cr/Mn-substituted *LSTM_{A-}* and *LSTC_{A-}* (5% A-site deficiency but no nickel substitution) were also used as cathode materials. Their performance, as indicated in Supplementary Fig. 17, is in between *LSTM_{O+}*/*LSTC_{O+}* and *LSTMN_{A-}*/*LSTCN_{A-}*, suggesting a positive electrocatalytic effect from the A-site deficiency. This may be the result of enhanced reducibility in such compositions and hence oxygen vacancy concentration, as proposed by Savaniu and Irvine²⁹. Still, the effect of Ni exsolution adds to the cathode's electrochemical activity, as indicated by the superior performance.

To further understand the observed electrochemical performance in CO₂ electrolysis mode at 800 °C for the different cathode materials, impedance spectroscopy was carried out under a range of applied biases, that is, 1.1–1.6 V. Similar trends are observed for all cathode materials, as shown in Supplementary Figs 18 and 19. First, series resistance, *R_s*, is stable and dominated by the electrolyte resistance, which is indicative of the titanates'

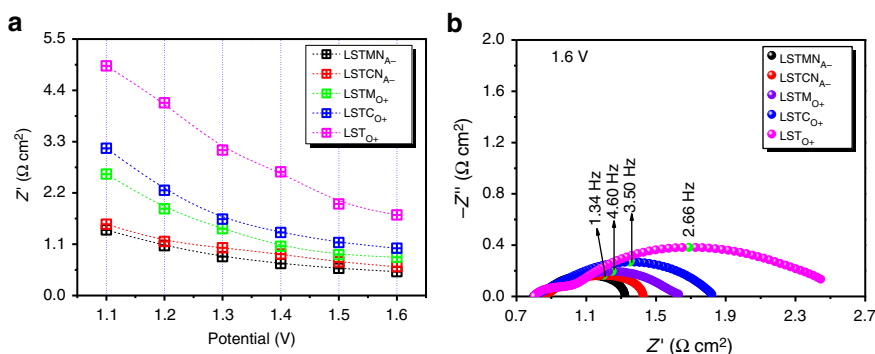


Figure 6 | AC impedance spectroscopy with different cathodes. (a) The comparison of R_p for the high-temperature CO_2 electrolysis with different electrode; (b) *in situ* AC impedance at 1.6 V.

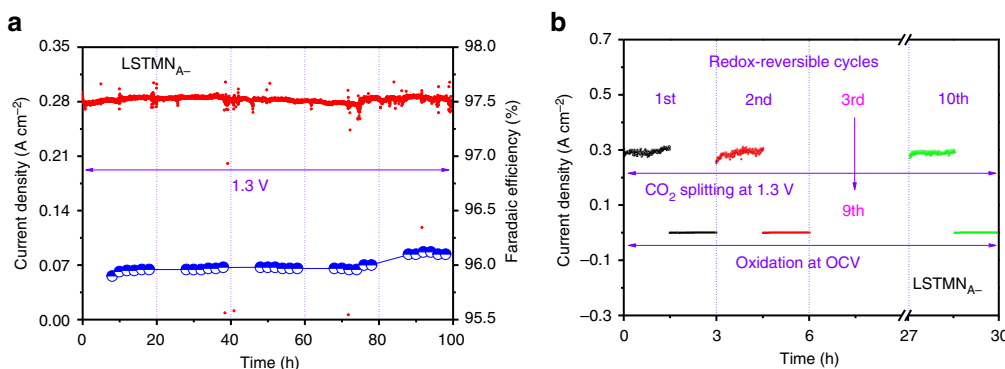


Figure 7 | Cycling performance. (a) The long-term performance and current efficiency of the $\text{LSTMN}_{\text{A}-}$ cathode with the flow of CO_2 at 800°C ; (b) the short-term performance of $\text{LSTMN}_{\text{A}-}$ cathode after 10 redox cycles.

capability to provide an electronically conductive electrode backbone. In our full electrolyzers, the ohmic resistance of electrode is negligible because the conductivity of titanates is 3–4 orders of magnitude higher than that of YSZ electrolyte. Second, polarization resistances, R_p , decrease with increasing voltages, which may be due to that the increasing potential leads to a stronger reducing potential that produces higher oxygen vacancy concentration in titanate and thus better ionic conductivity and CO_2 adsorption/activation, enhancing electrode kinetics. A change in the fermi level of the electron can also be expected to facilitate electrode polarizations by increasing applied potential. The electrode response seems to be dominated by two low frequency processes. One is related to gas conversion and its response diminishes upon increasing the applied voltage, as expected. The second process is tentatively attributed to dissociative adsorption of reactant species. This seems justified, as R_p is largest for $\text{LSTO}_{\text{O}+}$ ($4.92\text{--}1.73\ \Omega\ \text{cm}^2$ at 1.1–1.6 V) and decreases for $\text{LSTM}_{\text{O}+}$ ($2.86\text{--}0.82\ \Omega\ \text{cm}^2$ at 1.1–1.6 V) to finally be lowest for $\text{LSTMN}_{\text{A}-}$ ($1.41\text{--}0.51\ \Omega\ \text{cm}^2$ at 1.1–1.6 V). Therefore R_p seems to decrease with the electrode's increasing ability to chemically adsorb and activate CO_2 , with the best electrode performance observed for electrodes with both exsolved Ni and oxygen vacancies on its surface. The hetero-junction interface with Ni nanoparticles interacting with oxygen vacancy on titanate provides a synergy to facilitate electrode reaction. However, the catalytic activity of Mn itself in ABO_3 oxide is better than the Cr-doped sample, and the ionic conductivity of $\text{LSTM}_{\text{O}+}$ is higher than that of $\text{LSTCO}_{\text{O}+}$. The above two points would accordingly deliver better performance for $\text{LSTM}_{\text{O}+}$ electrode even though $\text{LSTCO}_{\text{O}+}$

has a higher oxygen vacancy concentration. The different cathode materials' impedance responses at 1.6 V are summarized in Fig. 6.

The long-term stability of the exsolving cathode material $\text{LSTMN}_{\text{A}-}$ was assessed by performing CO_2 electrolysis for a period of 100 h at 1.3 V and 800°C in 100% CO_2 atmosphere. As shown in Fig. 7a, a stable current density of $0.28\ \text{A}\ \text{cm}^{-2}$ is retained for the duration of the experiment. The stability of this material upon switching between oxidizing and reducing conditions was similarly assessed by redox cycling at 800°C in alternating 5% H_2/Ar and air atmospheres, with subsequent CO_2 electrolysis at 1.3 V. As indicated by Fig. 7b and Supplementary Fig. 20, no performance degradation can be observed after 10 such redox cycles, demonstrating excellent stability of the active nanostructured surface of the titanate within the frames of these experiments. The anchoring of Ni nanoparticles to the perovskite lattice is expected to improve both long-term and redox stability, by preventing particle coalescence driven by surface energy reduction¹⁸.

Discussion

In conclusion, we have shown exceptionally high performance for direct CO_2 electrolysis with near 100% Faradaic efficiency. The key is the tailored surface structure of doped strontium titanate that is *in situ* constructed through a combination of Ni particle exsolution and oxygen stoichiometry engineering. These active surface structures enable high-temperature chemical adsorption/activation of CO_2 and furthermore exhibit high-temperature stability for several tens of hours with significant

redox cycling ability. Our work shows that these titanates are serious candidates for alternative cathode materials in SOE cells, providing the tools to develop the next generations of electrochemical devices for energy conversion and storage.

Methods

Synthesis. Ceramic oxides including $\text{La}_{0.2}\text{Sr}_{0.8}\text{Ti}_{1.0}\text{O}_{3+\delta}$ (LSTO₊), $\text{La}_{0.2}\text{Sr}_{0.8}\text{Ti}_{0.9}\text{Cr}_{0.1}\text{O}_{3+\delta}$ (LSTCO₊), $\text{La}_{0.2}\text{Sr}_{0.8}\text{Ti}_{0.9}\text{Mn}_{0.1}\text{O}_{3+\delta}$ (LSTM_{O+}), $(\text{La}_{0.2}\text{Sr}_{0.8})_{0.95}\text{Ti}_{0.9}\text{Mn}_{0.1}\text{O}_{3+\delta}$ (LSTM_{A-}), $(\text{La}_{0.2}\text{Sr}_{0.8})_{0.95}\text{Ti}_{0.9}\text{Cr}_{0.1}\text{O}_{3-\delta}$ (LSTCO₋), $(\text{La}_{0.2}\text{Sr}_{0.8})_{0.95}\text{Ti}_{0.85}\text{Cr}_{0.1}\text{Ni}_{0.05}\text{O}_{3+\delta}$ (LSTCNA₋), $(\text{La}_{0.2}\text{Sr}_{0.8})_{0.95}\text{Ti}_{0.85}\text{Mn}_{0.1}\text{Ni}_{0.05}\text{O}_{3+\delta}$ (LSTMNA₋), $(\text{La}_{0.8}\text{Sr}_{0.2})_{0.95}\text{MnO}_{3-\delta}$ (LSMA₋) and $\text{Ce}_{0.8}\text{Sm}_{0.2}\text{O}_{2-\delta}$ powders were synthesized using a solid-state reaction method performed in air³⁰.

Characterization. Phase formations were confirmed by using X-ray diffraction (Cu K α , Miniflex 600, Rigaku Corporation, Japan), and the data were refined by using the General Structure Analysis System software³¹. Scanning electron microscopy (SU-8010, JEOL Ltd, Japan) and high-resolution transmission electron microscopy (Tecnai F20, FEI Ltd, USA) were employed to investigate the exsolution of nanoparticles. XPS (ESCALAB 250Xi, Thermo, USA) with monochromatized Al K α at $h\nu = 1,486.6$ eV was utilized to analyse elemental oxidation states. TGA was conducted on a Netzsch STA449F3 to calculate oxygen non-stoichiometry. To this end, powder samples were first reduced in 5% H₂/Ar at 800 °C for 20 h and TGA was subsequently performed on these samples from room temperature to 1,200 °C in air. The electrical properties of the reduced samples were examined using DC four-terminal method (Keithley 2,000, Keithley Instruments Inc., USA) in an atmosphere of 5% H₂/Ar between 650 and 800 °C. The H₂O content in 5% H₂/Ar or H₂ streams were measured to be 0.5 and 1%, respectively corresponding to oxygen partial pressures of $\sim 1 \times 10^{-20}$ and $\sim 1 \times 10^{-22}$ atm, respectively, at 800 °C. Approximately 2.0 g of the samples' powders were pressed into pellets and sintered at 1,400 °C for 10 h in air to get dense samples for the conductivity tests. Before the conductivity tests, the samples' pellets were reduced at 800 °C for 20 h in 5% H₂/Ar. All infrared spectra were collected using Fourier transform infrared spectrometer (VERTEX 70, Bruker). The powder samples were first reduced in 5% H₂/Ar at 800 °C for 20 h and Temperature Programmed Desorption tests of CO₂ were subsequently recorded from 50 to 1,200 °C in CO₂ with a Micromeritics-Hiden Autochem II 2920-QIC20.

Electrochemical characterization. Symmetric cells with 0.5-mm-thick YSZ and different titanate electrodes (1 cm²) were assembled and treated at 1,200 °C for 3 h in air. The current collector was made with silver paste (SS-8060, Xinluyi, China) and treated at 550 °C for 30 min in air. The 0.5-mm-thick YSZ-supported single SOEs with titanate cathodes (1 cm²) and LSM anode (1 cm²) were assembled and treated at 1,200 °C for 3 h in air. The current collector was made with silver paste (SS-8060, Xinluyi, China) and treated at 550 °C for 30 min in air. Electrochemical measurement was performed using an electrochemical station (IM6, Zahner, Germany). The frequency range was 4 MHz to 100 mHz, and the voltage perturbation was 10 mV. The gas flow was controlled with mass flow meters (D08-3 F, Sevenstar, China). The electrolysis experiment was conducted by flowing 5% H₂/Ar at the flow rate of 50 ml min⁻¹ for 1.5 h and then pure hydrogen at the flow rate of 50 ml min⁻¹ was supplied to cathode for 2.0 h at operation temperature. After that, the cathode would be sufficiently reduced and activated. And then the CO₂ electrolysis was performed. The online gas chromatography (GC2014, Shimadzu, Japan) was used to analyse the CO production of the output gas from the electrolyser cells at the flow rate of 50 ml min⁻¹ at 800 °C.

Theoretical calculations. Theoretical calculations are utilized to understand the mechanism of oxide ion conduction and CO₂ chemical adsorption. All calculations were performed using density functional theory implemented in the Vienna Ab Initio Simulation Package (VASP)^{32,33}. Within the projector augmented wave (PAW) framework, the plane-wave cutoff energy was set to 500 eV, which gives well-converged relative energies for the system. The Perdew-Burke-Ernzerhof functional was used to describe exchange and correlation³⁴. In electronic and geometric optimizations, energies and residual forces were converged to 10⁻⁶ eV and 0.02 eV Å⁻¹, respectively. In order to simplify and facilitate the calculation, the creation of oxygen vacancies through La and Mn/Cr substitution on the A and B-site, respectively, has been simplified by making oxygen-deficient SrTiO₃. The lattice parameters of SrTiO₃ (STO), optimized with a 13 × 13 × 13 k-point grid³⁵, were $a = b = c = 3.947$ Å, which is in good agreement with our experimental values. A superstructure with dimensions of 11.86 × 11.86 × 7.89 Å³ (89 atoms) was used to simulate the oxygen transport process within STO bulk. A 2 × 2 × 4 k-point grid was used for Brillouin zone sampling of this superstructure model. The climbing-image nudged elastic band method³⁶ was used to explore the transition states of the oxygen vacancies transport process. The periodic slab model was used to simulate the (110) surface of STO with Sr-Ti-O terminations. For this model, three Sr-Ti-O layers and two O layers were included in the slab. The three bottom layers were fixed to their bulk geometries during optimization while other atoms were fully relaxed. A vacuum layer with thickness of about 22 Å was inserted in the c direction to avoid the slab-to-slab interaction. The Ni segregation on the (110) surface slab of

STO was mimicked by a system containing a Ni cluster with 11 Ni atoms laying on (110) surface of STO with Sr-Ti-O terminations. A 2 × 2 × 1 k-point grid is employed for Brillouin zone sampling of (110) Ni/STO surface system. The adsorption energy of CO₂ is calculated as $E = E_{\text{tot}} - E_{\text{slab}} - E_{\text{ad}}$, where E_{tot} , E_{slab} and E_{ad} are the energy of the Ni/STO surface system without adsorption, the energy of the CO₂ in gas phase and the total energy of the adsorption system, respectively.

Data availability. The data that support the findings of this study are available from the corresponding author(s) upon request.

References

- Yue, X. & Irvine, J. T. S. Alternative cathode material for CO₂ reduction by high temperature solid oxide electrolysis cells. *J. Electrochem. Soc.* **159**, F442–F448 (2012).
- LagunaBercero, M. A., Skinner, S. J. & Kilner, J. A. Performance and characterization of (La, Sr)MnO₃/YSZ and La_{0.6}Sr_{0.4}Co_{0.2}Fe_{0.8}O₃ electrodes for solid oxide electrolysis cells. *Chem. Mater.* **22**, 1134–1141 (2010).
- Xie, K. *et al.* Direct synthesis of methane from CO₂/H₂O in an oxygen-ion conducting solid oxide electrolyser. *Energy Environ. Sci.* **4**, 2218–2222 (2011).
- Hauch, A. *et al.* Highly efficient high temperature electrolysis. *J. Mater. Chem.* **18**, 2331–2340 (2008).
- Zhan, Z. & Lin, Z. Electrochemical reduction of CO₂ in solid oxide electrolysis cells. *J. Power Sources* **195**, 7250–7254 (2010).
- Knibbe, R. *et al.* Solid oxide electrolysis cells: degradation at high current densities. *J. Electrochem. Soc.* **157**, B1209–B1217 (2010).
- Ebbesen, S. D. & Mogensen, M. Electrolysis of carbon dioxide in solid oxide electrolysis cells. *J. Power Sources* **193**, 349–358 (2009).
- Bidrawn, F. *et al.* Efficient reduction of CO₂ in a solid oxide electrolyzer. *Electrochem. Solid-State Lett.* **11**, 167–170 (2008).
- Kim-Lohsoontorn, P. & Bae, J. Electrochemical performance of solid oxide electrolysis cell electrodes under high-temperature coelectrolysis of steam and carbon dioxide. *J. Power Sources* **196**, 7161–7168 (2011).
- Tsekouras, G. & Irvine, J. T. S. The role of defect chemistry in strontium titanates utilised for high temperature steam electrolysis. *J. Mater. Chem.* **21**, 9367–9376 (2011).
- Tsekouras, G., Neagu, D. & Irvine, J. T. S. Step-change in high temperature steam electrolysis performance of perovskite oxide cathodes with exsolution of B-site dopants. *Energy Environ. Sci.* **6**, 256–266 (2012).
- Li, Y. *et al.* Composite fuelelectrode La_{0.2}Sr_{0.8}TiO_{3-δ}-Ce_{0.8}Sm_{0.2}O_{2-δ} for electrolysis of CO₂ in an oxygen-ion conducting solid oxide electrolyser. *Phys. Chem. Chem. Phys.* **14**, 15547–15553 (2012).
- Yang, L. *et al.* A composite cathode based on scandium doped titanate with enhanced electrocatalytic activity towards direct carbon dioxide electrolysis. *Phys. Chem. Chem. Phys.* **16**, 21417–21428 (2014).
- Xing, R. *et al.* Co-electrolysis of steam and CO₂ in a solid oxide electrolysis cell with La_{0.75}Sr_{0.25}Cr_{0.5}Mn_{0.5}O_{3-δ}-Cu ceramic composite electrode. *J. Power Sources* **274**, 260–264 (2015).
- Kim, G. *et al.* Investigation of the structural and catalytic requirements for high-performance SOFC anodes formed by infiltration of LSCM. *Electrochem. Solid-State Lett.* **12**, B48–B52 (2009).
- Xu, S. *et al.* Composite cathode based on Fe-loaded LSCM for steam electrolysis in an oxide-ion-conducting solid oxide electrolyser. *J. Power Sources* **239**, 332–340 (2013).
- Li, Y. *et al.* Composite cathode based on Ni-loaded La_{0.75}Sr_{0.25}Cr_{0.5}Mn_{0.5}O_{3-δ} for direct steam electrolysis in an oxide-ion-conducting solid oxide electrolyzer. *Int. J. Hydrogen Energy* **38**, 10196–10207 (2013).
- Neagu, D. *et al.* In situ growth of nanoparticles through control of non-stoichiometry. *Nat. Chem.* **5**, 916–923 (2013).
- Neagu, D. *et al.* Nano-socketed nickel particles with enhanced coking resistance grown in situ by redox exsolution. *Nat. Commun.* **6**, 8120 (2015).
- Hicks, J. C. *et al.* Designing adsorbents for CO₂ capture from flue gas—hyperbranched aminosilicas capable of capturing CO₂ reversibly. *J. Am. Chem. Soc.* **130**, 2902–2903 (2008).
- Khatir, R. A. *et al.* Thermal and chemical stability of regenerable solid amine sorbent for CO₂ capture. *Energy Fuels* **20**, 1514–1520 (2006).
- Qi, W. *et al.* Remarkable chemical adsorption of manganese-doped titanate for direct carbon dioxide electrolysis. *J. Mater. Chem. A* **2**, 6904–6915 (2014).
- Irvine, J. T. S. *et al.* Evolution of the electrochemical interface in high-temperature fuel cells and electrolysers. *Nature Energy* **1**, 15014 (2016).
- Li, X. *et al.* Synthesis and electrical properties of Co-doped Y_{0.08}Sr_{0.92}TiO_{3-δ} as a potential SOFC anode. *Solid State Ionics* **179**, 1588–1592 (2008).
- Figueiredo, M. C. *et al.* In situ spectroscopic study of CO₂ electroreduction at copper electrodes in acetonitrile. *ACS Catal.* **6**, 2382–2392 (2016).
- Su, W. *et al.* Surface phases of TiO₂ nanoparticles studied by UV Raman spectroscopy and FT-IR spectroscopy. *J. Phys. Chem. C* **112**, 7710–7716 (2008).

27. Kuroiwa, Y. *et al.* Atomic replacement effect on electron charge density of perovskite oxides. *J. Korean Phys. Soc.* **42**, 1425–1428 (2003).
28. Silva, L. F. *et al.* Long-range and short-range structures of cube-like shape SrTiO₃ powders: microwave-assisted hydrothermal synthesis and photocatalytic activity. *Phys. Chem. Chem. Phys.* **15**, 12386–12393 (2013).
29. Savaniu, C. D. & Irvine, J. T. S. Reduction studies and evaluation of surface modified A-site deficient La-doped SrTiO₃ as anode material for IT-SOFCs. *J. Mater. Chem.* **19**, 8119–8128 (2009).
30. Gan, Y. *et al.* Composite cathode La_{0.4}Sr_{0.4}TiO_{3-δ}-Ce_{0.8}Sm_{0.2}O_{2-δ} impregnated with Ni for high-temperature steam electrolysis. *J. Power Sources* **245**, 245–255 (2014).
31. Tao, S. & Irvine, J. T. S. Structural and electrochemical properties of the perovskite oxide Pr_{0.7}Sr_{0.3}Cr_{0.9}Ni_{0.1}O_{3-δ}. *Solid State Ionics* **179**, 725–731 (2008).
32. Kresse, G. & Furthmüller, J. Efficiency of ab-initio total energy calculations for metals and semiconductors using a plane-wave basis set. *Comput. Mater. Sci.* **6**, 15–50 (1996).
33. Kresse, G. & Furthmüller, J. Efficient iterative schemes for ab initio total-energy calculations using a plane-wave basis set. *Phys. Rev. B Condens. Matter* **54**, 11169–11186 (1996).
34. Perdew, J. P., Burke, K. & Ernzerhof, M. ERRATA: Generalized gradient approximation made simple. *Phys. Rev. Lett.* **77**, 3865–3868 (1996).
35. Methfessel, M. & Paxton, A. T. High-precision sampling for Brillouin-zone integration in metals. *Phys. Rev. B* **40**, 3616–3621 (1989).
36. Henkelman, G., Uberuaga, B. P. & Jónsson, H. A climbing image nudged elastic band method for finding saddle points and minimum energy paths. *J. Chem. Phys.* **113**, 9901–9904 (2000).

Acknowledgements

K.X. acknowledges Natural Science Foundation of China (91545123) and Natural Science Foundation of Fujian Province (2016J01275) for funding this work. C.L. acknowledges support by the Strategic Priority Research Program of the Chinese Academy of Sciences, Grant No. XDB20000000 and Hundred Talents Program of the Chinese Academy of

Sciences. J.T.S.I. acknowledges funding from EPSRC Platform Grant EP/K015540/1 and Royal Society Wolfson Merit Award WRMA 2012/R2.

Author contributions

K.X. fully designed and supervised the project. J.T.S.I. supervised part of the project. L.Y. conducted the experimental work. M.Z. and C.L. carried out the theoretical calculations. All authors contributed to data analysis and gave approval to the final version of the manuscript.

Additional information

Supplementary Information accompanies this paper at <http://www.nature.com/naturecommunications>

Competing interests: The authors declare no competing financial interests.

Reprints and permission information is available online at <http://npg.nature.com/reprintsandpermissions/>

How to cite this article: Ye, L. *et al.* Enhancing CO₂ electrolysis through synergistic control of non-stoichiometry and doping to tune cathode surface structures. *Nat. Commun.* **8**, 14785 doi: 10.1038/ncomms14785 (2017).

Publisher's note: Springer Nature remains neutral with regard to jurisdictional claims in published maps and institutional affiliations.



This work is licensed under a Creative Commons Attribution 4.0 International License. The images or other third party material in this article are included in the article's Creative Commons license, unless indicated otherwise in the credit line; if the material is not included under the Creative Commons license, users will need to obtain permission from the license holder to reproduce the material. To view a copy of this license, visit <http://creativecommons.org/licenses/by/4.0/>

© The Author(s) 2017