

RESEARCH ARTICLE

Association between fatty acid metabolism in the brain and Alzheimer disease neuropathology and cognitive performance: A nontargeted metabolomic study

Stuart G. Snowden¹, Amera A. Ebshiana¹, Abdul Hye², Yang An³, Olga Pletnikova⁴, Richard O'Brien⁵, John Troncoso⁴, Cristina Legido-Quigley^{1*}, Madhav Thambisetty^{6*}

1 Institute of Pharmaceutical Science, King's College London, London, United Kingdom, **2** Institute of Psychiatry, Psychology and Neuroscience, King's College London, London, United Kingdom, **3** Laboratory of Behavioral Neuroscience, National Institute on Aging, Baltimore, Maryland, United States of America, **4** Division of Neuropathology, Johns Hopkins School of Medicine, Johns Hopkins University, Baltimore, Maryland, United States of America, **5** Department of Neurology, Duke University Medical School, Duke University, Durham, North Carolina, United States of America, **6** Clinical and Translational Neuroscience Unit, Laboratory of Behavioral Neuroscience, National Institute on Aging, Baltimore, Maryland, United States of America

☞ These authors contributed equally to this work.

* cristina.legido_quigley@kcl.ac.uk (CLD); thambisetty@nih.gov (MT)



OPEN ACCESS

Citation: Snowden SG, Ebshiana AA, Hye A, An Y, Pletnikova O, O'Brien R, et al. (2017) Association between fatty acid metabolism in the brain and Alzheimer disease neuropathology and cognitive performance: A nontargeted metabolomic study. *PLoS Med* 14(3): e1002266. doi:10.1371/journal.pmed.1002266

Academic Editor: Carol Brayne, University of Cambridge, UNITED KINGDOM

Received: September 16, 2016

Accepted: February 15, 2017

Published: March 21, 2017

Copyright: This is an open access article, free of all copyright, and may be freely reproduced, distributed, transmitted, modified, built upon, or otherwise used by anyone for any lawful purpose. The work is made available under the [Creative Commons CC0](https://creativecommons.org/licenses/by/4.0/) public domain dedication.

Data Availability Statement: Data from BLSA participants used in the preparation of this manuscript are available to investigators upon request. Please address requests to Dr. Eleanor Simonsick at simonsickel@grc.nia.nih.gov.

Funding: The research leading to these results has received support from the Innovative Medicines Initiative Joint Undertaking (<http://www.imi.europa.eu/>) under European Medical Information Framework grant agreement no. 115372,

Abstract

Background

The metabolic basis of Alzheimer disease (AD) pathology and expression of AD symptoms is poorly understood. Omega-3 and -6 fatty acids have previously been linked to both protective and pathogenic effects in AD. However, to date little is known about how the abundance of these species is affected by differing levels of disease pathology in the brain.

Methods and findings

We performed metabolic profiling on brain tissue samples from 43 individuals ranging in age from 57 to 95 y old who were stratified into three groups: AD ($N = 14$), controls ($N = 14$) and “asymptomatic Alzheimer’s disease” (ASYMAD), i.e., individuals with significant AD neuropathology at death but without evidence for cognitive impairment during life ($N = 15$) from the autopsy sample of the Baltimore Longitudinal Study of Aging (BLSA). We measured 4,897 metabolite features in regions both vulnerable in the middle frontal and inferior temporal gyri (MFG and ITG) and resistant (cerebellum) to classical AD pathology. The levels of six unsaturated fatty acids (UFAs) in whole brain were compared in controls versus AD, and the differences were as follows: linoleic acid ($p = 8.8 \times 10^{-8}$, FC = 0.52, $q = 1.03 \times 10^{-6}$), linolenic acid ($p = 2.5 \times 10^{-4}$, FC = 0.84, $q = 4.03 \times 10^{-4}$), docosahexaenoic acid ($p = 1.7 \times 10^{-7}$, FC = 1.45, $q = 1.24 \times 10^{-6}$), eicosapentaenoic acid ($p = 4.4 \times 10^{-4}$, FC = 0.16, $q = 6.48 \times 10^{-4}$), oleic acid ($p = 3.3 \times 10^{-7}$, FC = 0.34, $q = 1.46 \times 10^{-6}$), and arachidonic acid ($p = 2.98 \times 10^{-5}$, FC = 0.75, $q = 7.95 \times 10^{-5}$). These fatty acids were strongly associated with AD when comparing the groups in the MFG and ITG, respectively: linoleic acid ($p < 0.0001$, $p = 0.0006$),

resources of which are composed of financial contribution from the European Union's Seventh Framework Programme (FP7/2007-2013) and European Federation of Pharmaceutical Industries and Association companies' in kind contribution for SGS and CLQ. This work has been supported by a grant to AAE from the Libyan Cultural attaché of Libyan embassy. This research was supported in part by the Intramural Research Program of the NIH, National Institute on Aging for MT and YA. The funders had no role in study design, data collection and analysis, decision to publish, or preparation of the manuscript.

Competing interests: The authors have declared that no competing interests exist.

Abbreviations: A β , amyloid- β ; AD, Alzheimer disease; ASYMAD, asymptomatic Alzheimer's disease; BLSA, Baltimore Longitudinal Study of Aging; CB, cerebellum; CERAD, Consortium to Establish a Registry for Alzheimer's Disease; COX, cyclooxygenase; CYP450, cytochrome P450; DHA, docosahexaenoic acid; EPA, eicosapentaenoic acid; GC-MS, gas chromatography–mass spectrometry; ITG, inferior temporal gyrus; LC-MS, liquid chromatography–mass spectrometry; LOX, lipoxygenase; MFG, middle frontal gyrus; PLS-DA, partial least square–discriminant analysis; PUFA, poly-unsaturated fatty acid; UFA, unsaturated fatty acid.

linolenic acid ($p < 0.0001$, $p = 0.002$), docosahexaenoic acid ($p < 0.0001$, $p = 0.0024$), eicosapentaenoic acid ($p = 0.0002$, $p = 0.0008$), oleic acid ($p < 0.0001$, $p = 0.0003$), and arachidonic acid ($p = 0.0001$, $p = 0.001$). Significant associations were also observed between the abundance of these UFAs with neuritic plaque and neurofibrillary tangle burden as well as domain-specific cognitive performance assessed during life. Based on the regional pattern of differences in brain tissue levels of these metabolites, we propose that alterations in UFA metabolism represent both global metabolic perturbations in AD as well as those related to specific features of AD pathology. Within the middle frontal gyrus, decrements in linoleic acid, linolenic acid, and arachidonic acid (control>ASYMAD>AD) and increases in docosahexanoic acid (AD>ASYMAD>control) may represent regionally specific threshold levels of these metabolites beyond which the accumulation of AD pathology triggers the expression of clinical symptoms. The main limitation of this study is the relatively small sample size. There are few cohorts with extensive longitudinal cognitive assessments during life and detailed neuropathological assessments at death, such as the BLSA

Conclusions

The findings of this study suggest that unsaturated fatty acid metabolism is significantly dysregulated in the brains of patients with varying degrees of Alzheimer pathology.

Author summary

Why was this study done?

- Currently it is thought that the main cause of memory problems in association with dementia is the presence of two big molecules in the brain called tau and amyloid proteins.
- The small molecule changes that occur inside the brain during Alzheimer disease are unknown.

What did the researchers do and find?

- We compared the differences in hundreds of small molecules in the brain in three groups: 14 people with healthy brains, 15 that had tau and amyloid but didn't show memory problems, and 14 that had these proteins and had memory loss.
- Then we also had a look at three different areas in the brain, one that usually shows no tau or amyloid deposition, one that shows more tau, and another that shows more amyloid.
- The main molecules that were different were six small fats, such as omegas, which were different everywhere in the brain.

What do these findings mean?

- Each fat showed a specific trend in Alzheimer patients.
- The number of people in the study was small, but the results suggest a role of fats in dementia.

Introduction

Alzheimer disease (AD) is a neurodegenerative disorder characterised by progressive cognitive decline, with impairment in multiple cognitive domains including memory, executive function, and language [1]. AD accounts for between 60% and 80% of total dementia cases worldwide [2] and represents a major cause of global morbidity and mortality. It is currently estimated that there are over 46 million people suffering from the disease worldwide, with the number of patients estimated to rise to 131.5 million by 2050 [3]. As well as a major human cost, dementia also imposes a significant economic impact costing US\$818 billion in 2015, and estimated to rise to US\$1 trillion by 2018 [3].

Extracellular accumulation of amyloid- β ($A\beta$) plaques and intracellular accumulation of neurofibrillary tangles are the pathological hallmarks of AD. A growing body of evidence suggests that metabolic perturbations in various pathways may mediate the occurrence of Alzheimer pathology as well as the onset of cognitive impairment in patients [4]. The application of large-scale unbiased metabolomics techniques to study the role of metabolism in Alzheimer pathogenesis may facilitate a more complete understanding of Alzheimer pathology and mechanisms triggering symptom expression. Metabolomics can be defined as “the unbiased analysis of the composition of small molecule metabolites in a given biological tissue or fluid under a specific set of environmental conditions” [5–7]. Several metabolomic studies have previously examined the relationship between metabolism and AD pathology. While studies on serum, plasma, and cerebrospinal fluid have identified several metabolic pathways involving bile acids, sphingolipids, antioxidants, phospholipids, and amino acids that appear to be associated with disease [8–13], it is likely that metabolomic studies on human brain tissue samples may provide direct insights into the molecular basis of Alzheimer pathogenesis. A handful of studies have performed metabolomics on brain tissue samples from both transgenic animal models and humans. Salek et al. found alterations in neurotransmitters, amino acids and antioxidants to be strongly associated with AD [14]. Graham et al. [15] used metabolomics to analyze human brain neocortex samples (15 controls versus 15 AD) and were able to differentiate controls and AD samples, [15]. Inoue et al. analyzed the parietal and frontal lobes of healthy controls and Alzheimer patients (10 versus 10) and identified increased brain polyamine metabolism in AD brains [16].

In AD, there is a regional specificity in the vulnerability of various brain regions to pathology, with some regions exhibiting greater amyloid pathology whilst others are dominated by neurofibrillary tangles [17,18]. However, previous studies have not examined changes in brain metabolite profiles in relation to the regional distribution of disease pathology. Equally important, few studies have addressed the relationships between brain metabolite signatures and the manifestation of clinical symptoms of AD in response to pathology. It is now well recognized that substantial levels of Alzheimer pathology can occur in the brains of cognitively normal individuals [19]. In the Baltimore Longitudinal Study of Aging (BLSA), we have categorized this group of individuals as “asymptomatic Alzheimer’s disease” (ASYMAD) [20], i.e., subjects

with significant AD neuropathology at death but without evidence for cognitive impairment during life, as assessed by longitudinal cognitive assessments [20].

In this study, we applied untargeted metabolomics to brain tissue collected through the autopsy sample of the BLSA in three groups of individuals (AD; $N = 14$, control; $N = 14$ and ASYMAD; $N = 15$) and studied differences in brain metabolite levels within regions both vulnerable and resistant to AD pathology. We thus examined the middle frontal gyrus (MFG; vulnerable to A β deposition), inferior temporal gyrus (ITG; vulnerable to tau deposition), and the cerebellum (CB), which is relatively spared of classical AD pathology [21].

The relationships between metabolic shifts and specific features of Alzheimer pathology and disease outcome were assessed by applying untargeted metabolomics utilizing liquid chromatography–mass spectrometry (LC-MS) and gas chromatography–mass spectrometry (GC-MS) to maximize the metabolite coverage obtained.

Materials and methods

Sample information

The ethics approval was obtained from the Institutional Review Board of the University of Maryland Baltimore County (03-AG-0325 THE BALTIMORE LONGITUDINAL STUDY OF AGING). The BLSA is a prospective, ongoing cohort study of community-dwelling volunteer participants in Baltimore that originated in 1958. As such, it is among the largest and longest running longitudinal studies of aging in the United States [22,23]. In general, at the time of entry into the study, participants had no physical or cognitive impairment. Detailed examinations, including neuropsychological assessments and neurological, laboratory, and radiological evaluations, were conducted every 2 y. Since 2003, participants older than 80 y have received yearly assessments. Written informed consent was obtained at each visit, and the study was approved by the local Institutional Review Board and the National Institute on Aging. After each visit, cognitive status was considered at consensus diagnosis conferences relying on information from neuropsychological tests as well as clinical data as described previously [24]. Diagnoses of dementia and AD were based on DSM-III-R [25] and the NINCDS-ADRDA criteria [26], respectively.

Brain tissue was collected through the autopsy sample of the BLSA. The autopsy program of the BLSA was initiated in 1986. We have previously described the study protocol in detail. Briefly, the mean age at death in the autopsy sample is 88.3 ± 7.3 y (range 69.3–103.2), and the mean interval between last evaluation and death is 8.7 ± 6.7 mo [27]. As reported previously, the autopsy subsample is not significantly different from the BLSA cohort as a whole in terms of the rates of dementia and clinical stroke [28]. Table 1 describes the demographic characteristics of the participants whose brain tissue samples were used in this study.

Chemicals and reagents

All solvents and reagents, water, methanol, acetonitrile, ammonium formate, formic acid, and methyl tertiary butyl ether (MTBE), were LC-MS grade purchased from Sigma-Aldrich. Two internal standards for LC-MS analysis were added, L-serine- $^{13}\text{C}_3$ ^{15}N (95%) and L-valine- $^{13}\text{C}_5$ ^{15}N (95%), purchased from Sigma-Aldrich. Sample derivatization for GC-MS analysis was performed using N,O-Bis(trimethylsilyl)trifluoroacetamide (BSTFA) with 1% trimethylchlorosilane (TMCS) purchased from Sigma-Aldrich.

Sample preparation

The in-vial dual extractions were performed as previously described [7]. After LC-MS analysis, the remaining aqueous and nonaqueous phases were split into separate vials and dried down

Table 1. Clinical characteristics of study participants.

	Control	Asymptomatic	AD
Participants (f/m)	14 (4/10)	15 (5/10)	14 (7/7)
Age at death (y) ^a	82.6 +/- 11.0 (64.2–99.2)	89.2 +/- 7.9 (71.9–96.4)	87.9 +/- 8.9 (62.9–98.7)
MMSE ^b	27.8 +/- 2.4 (23–30)	29.0 +/- 0.9* (25–30)	23.0 +/- 6.9** (8–30)
PMI (h) ^c	16.9 +/- 6.4 (7.0–28.0)	14.8 +/- 8.1 (2.0–33.0)	14.7 +/- 6.0 (3.0–23.0)
ApoE ^d	5/7/1/1	1/10/4/0	3/7/3/1

^a values are reported as the mean +/- standard deviation.

^b range values are reported as the mean +/- standard deviation.

^c values are reported as the mean +/- standard deviation.

^d range distribution of ApoE genotypes (e2:e3/e3:e3/e3:e4/e4:e4). No participants were e2:e2 or e2:e4.

MMSE: Mini-mental state examination, PMI: postmortem interval.

*p<0.05.

**p<0.01.

The calculated p-values were relative to controls.

doi:10.1371/journal.pmed.1002266.t001

under a stream of nitrogen at 37°C. Samples were then resuspended in a 1:1 solution of acetonitrile and the derivatizing agents N,O-Bis(Trimethylsilyl)trifluoroacetamide and 1% Trimethylchlorosilane, and were incubated at 37°C for 1 h. After incubation, samples were again dried down under nitrogen at 37°C and were subsequently resuspended in 25 µl of toluene for analysis.

Metabolite acquisition

Samples were analysed using HILIC LC-MS analysis performed as described previously [7]. GC-MS analysis was carried out on a Shimadzu QP-2010 with an AOC-20S autosampler and AOC-20i autoinjector (Shimadzu, Kyoto, Japan). The aqueous phase was analysed in split less mode with 2 µl of sample injected on a BP5MS capillary column (length 30 m, thickness 0.25 mm, diameter 0.25 mm). The carrier gas (helium) pressure was 79.5 Kpa, with a total flow of 125 ml/min, a column flow of 1.18 ml/min, a linear velocity of 40 cm/s, and a purge flow of 6 ml/min. The gradient temperature started at 80°C and was held for 5 min followed by a linear increase of 10°C per min to 200°C, where the rate of increase was slowed to 2°C per min to a final temperature of 225°C, and was held for 4 min. Analysis of 1 µl nonaqueous phase was performed in the split less mode on the same column. The carrier gas (helium) pressure was set to 86.2 Kpa with a total flow of 122.8ml/min, a column flow of 1.16 ml/min, a linear velocity of 40cm/s, and a purge flow of 6 ml/min. The gradient temperature started at 100°C and was held for 5 min, followed by a linear increase of 15°C per min to 250°C, where the rate of increase was slowed to 2°C per min to a final temperature of 310°C, where it was held for 4 min. Mass spectral analysis of both phases was performed using electron ionisation between 50 and 600 m/z with an ion source temperature of 200°C, an interface temperature of 280°C with a scan speed of 833, and an event time of 0.2 s.

Data processing

Initially, all raw data files were converted into.mzXML format, LC-MS files were converted using msConvert (ProteoWizard) whilst GC-MS files were converted using GCMS Solutions (Shimadzu). Converted data files were analysed using XCMS and performed in the open source software package R, with peak picking performed on all MS assays using a “centwave” method, which allows the deconvolution of closely eluting or slightly overlapping peaks. After peak picking, metabolite features were defined as peaks with an average intensity 5 times

higher in analytical samples than is measured in the extraction blanks. Metabolite features were analysed using a range of multivariate tests, with all of the data logarithmically transformed (base10) and scaled to unit variance (UV), including principal component analysis (PCA) and partial least square–discriminant analysis (PLS-DA) performed in SIMCA 13.0.4 (Umetrics, Umeå, Sweden). Model performance was assessed based on the cumulative correlation coefficients ($R^2X[\text{cum}]$) and predictive performance based on 7-fold cross validation ($Q^2[\text{cum}]$), with the significance of the model assessed based on the ANOVA of the cross-validated residuals (CV-ANOVA). Feature selection to create curated models was performed by iteratively removing metabolite features that had a score of less than 1 in the variable importance to projections plot to achieve the fitted model with the optimal R^2 and Q^2 values. All metabolite annotations were made by matching metabolite fragmentation patterns to those in both in-house and publicly available spectral libraries.

To compare the fatty acids among three groups (CN, ASYMAD, and DEMENT), we used nonparametric Kruskal–Wallis test for testing the null hypothesis that all three groups are equal and Mann–Whitney U test for pairwise comparisons. To control for type 1 errors in the p -values calculated using the Mann–Whitney U test, two false discovery rate strategies were employed. The first was to determine which p -values passed a Bonferroni corrected significance threshold and the second was to subject the p -values to a Benjamini–Hochberg procedure performed in “R.” The relationship of metabolite abundance to measures of neuritic plaque and neurofibrillary tangle burdens in the brain as described by the Consortium to Establish a Registry for Alzheimer’s Disease (CERAD) and Braak scores, respectively, were determined by calculating the Pearson’s product-moment correlation coefficient. To evaluate the effect of fatty acids on longitudinal cognitive performance, we created domain-specific composite scores. We standardized each of the cognitive measures (using their baseline mean and standard deviation) and averaged the corresponding Z scores to form the composite score. Trail making tests A and B were first log transformed and then standardized. The following five cognitive domains were created: memory is the composite score of CVLT, learning and immediate free recall and CVLT long delay free recall, attention is the composite score of Trail making test A and WAIS-R Digits Forward, executive function is the composite score of Trail making test B and WAIS-R Digits Backward, language is the composite score of Letter Fluency and Semantic Fluency, and visuospatial ability is the composite score of clock drawing and card rotation tests.

We then used separate linear mixed models with each cognitive domain as the outcome variable. The main predictor time (or time of follow up) was anchored at the last visit, and all the previous longitudinal follow-up visits were negative relative to the last visit. This kind of recentering of the time variable allows us to test the effect of the levels of each fatty acid on the cognitive performance at last visit and cognitive rates of change simultaneously in a single model. The predictors included fatty acid levels, sex, age at last visit, time, and interactions of time with fatty acid levels, sex, and age at last visit. Random effects included intercept and time with unstructured covariance. Sex was coded -0.5 for females and 0.5 for males, age at last visit was mean centered, each fatty acid level was standardized. All analyses were conducted in SAS 9.4 (Cary, NC).

Results

The clinical characteristics of the three diagnostic groups analysed are summarised in [Table 1](#). The three groups did not differ significantly in age at death, postmortem interval, sex, or APOE $\epsilon 4$ status. In this study, a total of 4,897 metabolite features were measured, 3,482 by LC-MS and 1,415 by GC-MS. Of these measured metabolite features, 126 were successfully annotated, representing 100 structurally distinct metabolites ([S1 Table](#), [S2 Table](#)).

Multivariate models were constructed based on all 4,897 metabolite features to assess the effects of both brain region and pathological diagnosis on metabolite composition. In curated PLS-DA models, it can be seen that both brain region (S1 Fig: $R^2X = 0.639$, $R^2Y = 0.622$, $Q^2 = 0.608$, cross validated ANOVA [CV-ANOVA] = 5.65×10^{-33}) and pathological diagnosis (S1 Fig: $R^2X = 0.499$, $R^2Y = 0.439$, $Q^2 = 0.404$, CV-ANOVA = 4.72×10^{-21}) are significantly associated with metabolite composition. The PLS-DA scores plots (S1 Fig) show that all three of the brain regions possess unique metabolite compositions, whilst the MFG and the ITG are compositionally distinct, shown by a modest separation in the second component (t[2]), and are more similar to each other than they are with the CB (S1 Fig), which is highly compositionally distinct, as shown by a clear separation in the first component (t[1]). As with the brain regions, PLS-DA analysis showed that the three diagnostic groups possessed unique chemical compositions, with less difference observed between control and ASYMAD, shown by the modest separation in the second component, with the AD groups the most distinct with the greatest separation in the first component.

Having shown that AD pathology is significantly associated with brain metabolite levels, we then examined specific metabolites and metabolic pathways driving the observed shifts. The metabolite features that were used to generate the optimal curated PLS-DA models in all three diagnostic groups (S1 Fig) were taken forward for further analyses of their relationships to AD pathology and disease status. The optimal curated PLS-DA model was comprised (S1 Fig) of 876 metabolite features putatively representing 160 metabolites as associated with diagnostic status, with 31 of these metabolites annotated (Table 2).

These annotated metabolites were subsequently mapped onto known metabolic pathways using the Kyoto Encyclopedia of Genes and Genomes' pathway mapping tool [29]. This approach identified 113 metabolic pathways that contained at least one of the 31 metabolites. Of these 113 metabolic pathways, poly-unsaturated fatty acid (PUFA) metabolism was identified for more detailed analysis, as the metabolites in this pathway showed the strongest association with diagnostic status.

Table 3 and Fig 1 summarize results of analyses comparing brain tissue unsaturated fatty acid (UFA) levels between the three groups. The overall pattern of results showed that brain tissue levels of the UFAs, linoleic acid, linolenic acid, eicosapentaenoic acid (EPA), oleic acid, and arachidonic acid were reduced in the ITG and MFG regions in AD relative to the control group. The AD group showed higher tissue levels of docosahexaenoic acid (DHA) in the ITG and MFG regions relative to controls. Within the CB, EPA levels also appeared to be lower in AD with oleic acid levels showing a similar trend relative to controls. Cerebellar DHA levels in AD were also higher relative to controls. Within the MFG, decrements in the levels of oleic acid, linoleic acid, linolenic acid, and arachidonic followed the pattern control > ASYMAD > AD. Increments in DHA levels in the MFG followed the pattern AD > ASYMAD > control.

As well as associating with disease status, levels of all six UFAs in the MFG and ITG were shown to correlate significantly with both measures of neurofibrillary pathology estimated by Braak score and amyloid plaque burden assessed by the CERAD score (Table 4). Assessments of brain tissue levels of these UFAs in relation to domain-specific measures of cognitive performance showed consistent patterns across domains and several significant cross sectional and longitudinal associations across the three brain regions were found (S3–S7 Tables and S3 Fig and S4 Fig). In general, the pattern of these associations showed that lower tissue levels of linoleic acid, linolenic acid, EPA, oleic acid, and arachidonic acid were related to worse cognitive performance, whereas higher brain DHA levels were associated with poorer cognitive performance. The strongest associations with cognitive performance were between abundance of these fatty acids in the MFG and the final pre-mortem memory, attention and executive

Table 2. Annotated metabolites in order of significance (*p*-value) for the comparison of controls versus individuals with dementia.

Metabolite	Control versus Asymptomatic			Control versus Dementia		
	<i>p</i> -value	<i>q</i> -value ^a	FC ^b	<i>p</i> -value	<i>q</i> -value ^a	FC ^b
Cholesterol	7.5 × 10 ⁻³	4.96 × 10 ⁻²	0.74	6.8 × 10 ⁻⁸⁺	1.03 × 10 ⁻⁶	0.53
Linoleic Acid	7.3 × 10 ⁻³	5.81 × 10 ⁻²	0.74	8.8 × 10 ⁻⁸⁺	1.03 × 10 ⁻⁶	0.52
Cholestenol	1.0 × 10 ⁻¹	5.81 × 10 ⁻²	1.17	1.0 × 10 ⁻⁷⁺	1.03 × 10 ⁻⁶	1.44
Docosahexaenoic acid	1.7 × 10 ⁻¹	5.81 × 10 ⁻²	1.14	1.7 × 10 ⁻⁷⁺	1.24 × 10 ⁻⁶	1.45
Carbamic acid	1.9 × 10 ⁻¹	8.68 × 10 ⁻²	1.15	2.0 × 10 ⁻⁷⁺	1.24 × 10 ⁻⁶	1.53
Methylheptadecadiynoic acid	2.4 × 10 ⁻²	1.50 × 10 ⁻¹	0.79	2.8 × 10 ⁻⁷⁺	1.45 × 10 ⁻⁶	0.59
Oleic acid	5.5 × 10 ⁻²	1.73 × 10 ⁻¹	0.73	3.3 × 10 ^{-7*+}	1.46 × 10 ⁻⁶	0.34
Palmitic acid	1.9 × 10 ⁻²	1.73 × 10 ⁻¹	0.73	4.8 × 10 ^{-7*+}	1.86 × 10 ⁻⁶	0.44
Hexanedioic acid	2.7 × 10 ⁻¹	1.73 × 10 ⁻¹	1.11	6.4 × 10 ⁻⁷⁺	2.20 × 10 ⁻⁶	1.42
Dimethylglycine	2.9 × 10 ⁻²	1.73 × 10 ⁻¹	0.89	1.0 × 10 ⁻⁶⁺	3.10 × 10 ⁻⁶	0.74
Guanidobutanoate	1.9 × 10 ⁻¹	1.73 × 10 ⁻¹	0.94	3.7 × 10 ⁻⁶⁺	1.04 × 10 ⁻⁵	0.75
Ascorbate	1.5 × 10 ⁻¹	1.73 × 10 ⁻¹	1.20	1.9 × 10 ⁻⁵⁺	4.91 × 10 ⁻⁵	1.54
Aminobutanal	6.7 × 10 ⁻²	1.79 × 10 ⁻¹	0.94	9.1 × 10 ⁻⁵⁺	2.07 × 10 ⁻⁴	0.86
Gluconic acid	1.4 × 10 ⁻²	1.90 × 10 ⁻¹	1.31	1.0 × 10 ⁻⁴⁺	2.07 × 10 ⁻⁴	1.51
Cysteine	4.7 × 10 ⁻¹	1.90 × 10 ⁻¹	1.06	1.0 × 10 ⁻⁴⁺	2.07 × 10 ⁻⁴	1.33
Aspartate	6.2 × 10 ⁻²	1.94 × 10 ⁻¹	1.17	1.5 × 10 ⁻⁴⁺	2.91 × 10 ⁻⁴	0.84
L-DOPA	9.2 × 10 ⁻²	2.55 × 10 ⁻¹	1.11	1.8 × 10 ^{-4*+}	3.27 × 10 ⁻⁴	1.23
Fumaric acid	4.4 × 10 ⁻²	2.56 × 10 ⁻¹	0.91	1.9 × 10 ⁻⁴⁺	3.27 × 10 ⁻⁴	0.85
Linolenic acid	7.5 × 10 ⁻²	2.56 × 10 ⁻¹	0.90	2.5 × 10 ⁻⁴⁺	4.03 × 10 ⁻⁴	0.84
Indoleacetic acid	1.4 × 10 ⁻¹	2.56 × 10 ⁻¹	0.93	2.6 × 10 ⁻⁴⁺	4.03 × 10 ⁻⁴	0.82
Eicosapentaenoic acid	1.6 × 10 ⁻³	2.56 × 10 ⁻¹	0.25	4.4 × 10 ⁻⁴	6.48 × 10 ⁻⁴	0.16
Allantoin	6.9 × 10 ⁻³	2.56 × 10 ⁻¹	1.19	4.6 × 10 ⁻⁴	6.48 × 10 ⁻⁴	1.30
Hypoxanthine	4.7 × 10 ⁻¹	2.56 × 10 ⁻¹	0.98	5.4 × 10 ⁻⁴	7.28 × 10 ⁻⁴	0.88
Coumaric acid	5.9 × 10 ⁻²	3.10 × 10 ⁻¹	1.16	7.6 × 10 ⁻⁴	9.82 × 10 ⁻⁴	1.28
Adenine	9.2 × 10 ⁻²	3.35 × 10 ⁻¹	1.10	8.0 × 10 ⁻⁴	9.92 × 10 ⁻⁴	1.18
Oxoarginine	9.0 × 10 ⁻¹	4.29 × 10 ⁻¹	0.99	8.6 × 10 ⁻⁴	1.03 × 10 ⁻³	0.77
Deoxyflourouridine	5.2 × 10 ⁻¹	5.20 × 10 ⁻¹	1.08	1.0 × 10 ⁻³	1.15 × 10 ⁻³	1.45
Arginine	5.7 × 10 ⁻²	5.20 × 10 ⁻¹	1.24	1.1 × 10 ⁻³	1.22 × 10 ⁻³	1.38
GABA	3.6 × 10 ⁻¹	5.56 × 10 ⁻¹	1.07	4.4 × 10 ⁻³	4.70 × 10 ⁻³	1.18
Methylstearate	5.4 × 10 ⁻¹	5.58 × 10 ⁻¹	0.85	2.6 × 10 ⁻²	2.69 × 10 ⁻²	0.56
Octadecanal	1.6 × 10 ⁻¹	9.00 × 10 ⁻¹	2.41	5.6 × 10 ⁻¹	5.60 × 10 ⁻¹	0.68

^a *q*-value calculated using Benjamini-Hochberg (0.05 threshold).

^b fold change in metabolite abundance relative to controls.

+ significant below Bonferroni correct *p*-value = 3.14 × 10⁻⁴.

DOPA: dihydroxy-phenylalanine, GABA: gamma-aminobutyrate.

doi:10.1371/journal.pmed.1002266.t002

function scores (Fig 2), as well as longitudinal trajectories in memory and language performance. The strongest association observed in the ITG between levels of these fatty acids was with longitudinal trajectory of visuospatial performance (S4 Fig).

Discussion

The metabolic basis of vulnerability to AD pathology and the subsequent expression of symptoms of AD are poorly understood. In this study, we applied mass spectrometry-based metabolomics to human brain tissue samples from a well-characterized longitudinal cohort, i.e., the BLSA, to address this issue. Our results suggest that perturbations in brain UFA metabolism

Table 3. Relative differences in the abundance of six UFAs between all three diagnostic groups in individual brain regions.

Fatty acid	Overall <i>p</i> -value		Cont versus Asymp			Cont versus Dem			Asymp versus Dem		
	<i>p</i> -value ^a	q-value ^c	<i>p</i> -value ^b	q-value ^c	FC	<i>p</i> -value ^b	q-value ^c	FC	<i>p</i> -value ^b	q-value ^c	FC
CB region											
Linoleic	0.0910	0.1024									
Oleic	0.0160	0.0192	0.1800	0.3240	1.67	0.0840	0.1008	0.49	0.0089	0.0200	0.29
Docosahexanoic	<0.0001 ⁺	<0.0003	0.0003	0.0027	0.34	0.0330	0.0424	1.24	0.0001 ⁺	0.0004	3.67
Arachidonic	0.2900	0.2900									
Linolenic	0.2600	0.2753									
Eicosapentaenoic	0.0110	0.0141	0.0062	0.0140	0.11	0.0280	0.0388	0.27	0.3000	0.3600	2.32
ITG region											
Linoleic	0.0006	0.0012	0.0006	0.0027	0.42	0.0130	0.0234	0.57	0.0640	0.1152	1.34
Oleic	0.0003	0.0007	0.0006	0.0027	0.26	0.0043	0.0111	0.43	0.0340	0.0680	1.64
Docosahexanoic	0.0024	0.0033	0.0018	0.0054	1.43	0.0220	0.0330	1.30	0.1000	0.1500	0.91
Arachidonic	0.001	0.0016	0.0008	0.0029	0.71	0.0069	0.0155	0.77	0.2100	0.2700	1.09
Linolenic	0.002	0.0030	0.0021	0.0054	0.81	0.0081	0.0162	0.86	0.1800	0.2492	1.06
Eicosapentaenoic	0.0008	0.0014	0.0004	0.0027	0.09	0.0220	0.0330	0.21	0.0920	0.1500	2.24
MFG region											
Linoleic	<0.0001 ⁺	<0.0003	0.2900	0.4350	0.86	0.0001 ⁺	0.0009	0.41	<0.0001 ⁺	<0.00036	0.47
Oleic	<0.0001 ⁺	<0.0003	0.2000	0.3273	0.41	0.0004	0.0018	0.30	<0.0001 ⁺	<0.00036	0.73
Docosahexanoic	<0.0001 ⁺	<0.0003	0.0110	0.0220	1.25	<0.0001 ⁺	<0.0009	1.39	0.0037	0.0095	1.11
Arachidonic	0.0001 ⁺	0.0003	0.6100	0.8446	0.98	0.0009	0.0027	0.69	<0.0001 ⁺	<0.00036	0.69
Linolenic	<0.0001 ⁺	<0.0003	0.7100	0.9000	0.91	0.0004	0.0018	0.81	<0.0001 ⁺	<0.00036	0.90
Eicosapentaenoic	0.0002 ⁺	0.0005	0.7800	0.9000	1.25	0.0006	0.0022	0.08	0.0003 ⁺	0.0009	0.06

^a *p*-value calculated using Kruskal-Wallis test.

^b *p*-value calculated using Mann-Whitney U test.

^c q-value calculated using Benjamini-Hochberg (0.05 threshold).

⁺ significant below Bonferroni correct *p*-value = 3.14×10^{-4} .

Asymp, asymptomatic AD; Cont, control; Dem, dementia AD; FC, fold change.

doi:10.1371/journal.pmed.1002266.t003

are closely related to AD pathogenesis. To the best of our knowledge, this report is the first to measure brain tissue levels of UFAs to demonstrate a relationship with both severity of AD pathology and the expression of AD symptoms. Including brain tissue samples from “ASY-MAD” individuals who represent an intermediate group in the gradation of neuropathology from controls to AD patients in the absence of cognitive impairment during life allowed us to relate measures of brain UFAs to incremental levels of AD pathology and symptom expression. Importantly, by measuring UFA levels in brain regions both vulnerable to distinct pathological features of AD, i.e., MFG (amyloid deposition) and ITG (tau accumulation) as well as in a region relatively resistant to AD pathology, i.e., CB, we were able to ask whether the observed alterations in these metabolites were related to AD-defining pathological processes. We can categorize our results broadly as follows:

- i. In the CB, the observed shifts in the abundance of the six UFAs measured do not follow a consistent trend (Fig 1) as observed in both the ITG and MFG, which are vulnerable to tau and amyloid pathology, respectively. Consistent shifts in the abundance of the UFAs are observed in the ITG, with the greatest difference between control and ASYMAD participants (Fig 1). Consistent shifts are also observed in the MFG, with the ASYMAD group being intermediate (Control>ASYMAD>AD) (Fig 1).

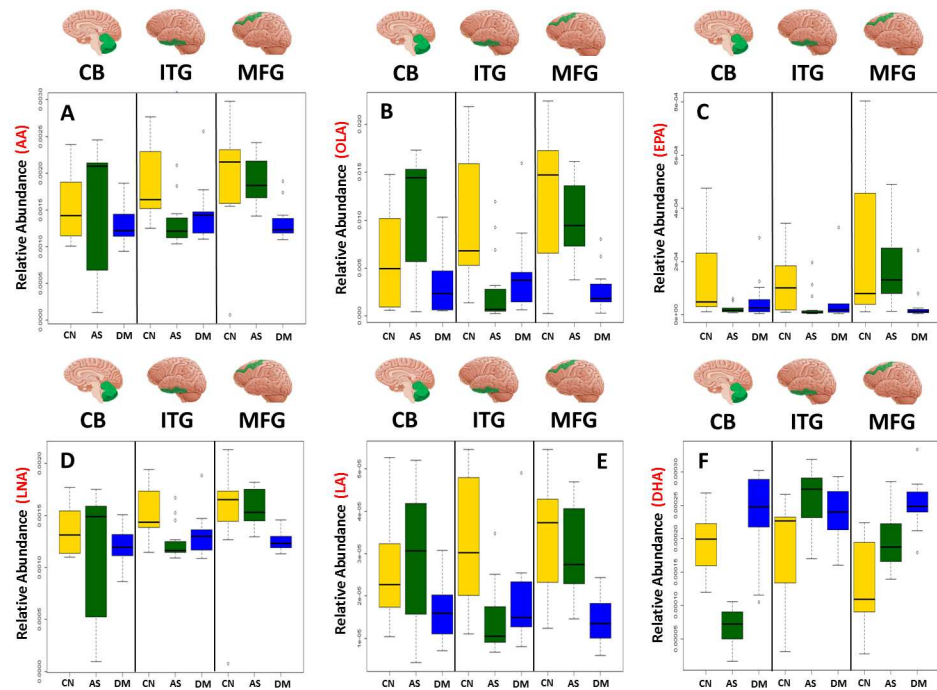


Fig 1. Boxplots showing the effect of disease status on the abundance of six UFAs in the CB, ITG, and MFG. Dysregulation of six UFAs shown by boxplots of three disease statuses separated by brain region A) arachidonic acid (AA), B) oleic acid (OLA), C) eicosapentaenoic acid (EPA), D) linolenic acid (LNA), E) linoleic acid (LA), F) docosahexaenoic acid (DHA). AS, asymptomatic Alzheimer; CN, control; DM, Dementia/Alzheimer.

doi:10.1371/journal.pmed.1002266.g001

- ii. There is an extensive body of literature exploring the potential mechanisms of Alzheimer pathology [30–32] with a number of metabolomic studies having examined associations with AD [9–11,33], however few have studied these differences in human brain tissue [15,16]. Our current report identified metabolite compositional differences between three diagnostic groups, i.e., healthy controls, AD, and ASYMADs, i.e., individuals with significant levels of Alzheimer pathology, but with no cognitive impairment during life (S1 Fig). The overall pattern of metabolite shifts observed in the brain was mirrored in each of the individual brain regions (S2 Fig), with the metabolism of PUFAs discriminating between the clinical groups in all brain regions.
- iii. Whilst the CB was included in this study as a brain region showing low levels of Alzheimer pathology, we did observe significant alterations in the levels of the six UFAs in this region relative to controls, suggesting that both Alzheimer pathology and other non-AD-related processes may contribute to or result from the metabolic differences observed in this brain region [34].

Previous studies have examined the abundance of UFAs in the brain of AD patients. Nasaruddin et al. [35] reported that the abundance of 20 fatty acids was increased in Brodmann’ 7 region of late stage AD patients. Four of these species, i.e., oleic, linoleic, linolenic, and arachidonic acid were shown to be reduced in our present study, whereas levels of DHA were consistent. Cunnane et al. [36] measured fatty acids in both plasma and brain tissue samples and reported lower levels of esterified DHA in the AD group—specifically in phosphatidylserine in the middle frontal and superior temporal cortices. It must be noted that DHA containing

Table 4. Correlation analysis of the abundance of UFAs and CERAD and Braak scores.

Region	Fatty acid	Braak (tau)		CERAD (Aβ)	
		r	p-value	r	p-value
Cerebellum	EPA	-0.31	0.096	-0.35	0.055
	Linoleic	-0.13	0.497	-0.19	0.306
	Arachidonic acid	-0.11	0.559	-0.19	0.033
	Oleic acid	-0.28	0.133	-0.27	0.142
	DHA	0.41	0.024	0.34	0.068
	Linolenic acid	-0.36	0.053	0.30	0.108
ITG	EPA	-0.33	0.042	-0.36	0.028
	Linoleic	-0.38	0.018	-0.35	0.032
	Arachidonic acid	-0.38	0.020	-0.37	0.025
	Oleic acid	-0.34	0.040	-0.35	0.034
	DHA	0.31	0.058	0.32	0.048
	Linolenic acid	-0.26	0.115	-0.32	0.052
MFG	EPA	-0.61	<0.001	-0.53	<0.001
	Linoleic	-0.57	<0.001	-0.58	<0.001
	Arachidonic acid	-0.56	<0.001	-0.55	<0.001
	Oleic acid	-0.64	<0.001	-0.64	<0.001
	DHA	0.60	<0.001	-0.69	<0.001
	Linolenic acid	-0.63	<0.001	-0.67	<0.001

Relationships between global measures of amyloid and tau pathologies and the regional abundances of six UFAs, values highlighted in bold are significant at $p < 0.05$.

doi:10.1371/journal.pmed.1002266.t004

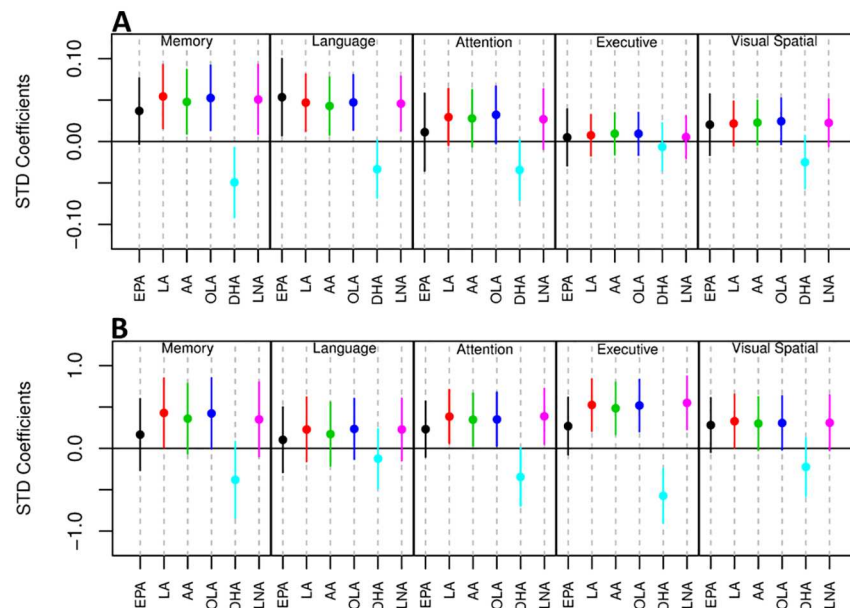


Fig 2. Forest plot showing the relationship of the abundance of six UFAs in the MFG and five measures of cognitive performance. A) Association between UFA levels and longitudinal cognitive performance. **B)** Association between UFA levels and cognitive performance at the last visit prior to death. AA, arachidonic acid; DHA, docosahexaenoic acid; EPA, eicosapentaenoic acid; LA, linoleic acid; LNA, linolenic acid; OLA, oleic acid; STD, Standard.

doi:10.1371/journal.pmed.1002266.g002

phospholipids are structurally and functionally distinct metabolites to the free fatty acids reported in this study.

The PUFAs can broadly be split into two classes, the omega-3 and omega-6 fatty acids. Alpha-linolenic acid (omega-3) and linoleic acid (omega-6) are both “parental” essential fatty acids, both of which are converted into long chain UFAs, arachidonic acid from linoleic acid and DHA and EPA from linolenic acid. Amtul et al. [37] performed an in vitro study to determine the effect of the omega-6 fatty acids linoleic acid and arachidonic acid, and the omega-9 fatty acid oleic acid on the pathology of AD. Linoleic, arachidonic, and oleic acid were all shown to induce the polymerisation of both tau and A β [37], with arachidonic acid also shown to induce A β_{42} formation reducing the observed ratio of A β_{40} /A β_{42} [37]. Whilst this information and additional literature [38] would point to oleic acid being pathogenic, there is also a significant body of literature supporting the idea that oleic acid is protective against AD [39,40]. Amtul et al. demonstrated that in in vitro models, oleic acid supplementation reduced secreted A β levels and validated these findings in a transgenic mouse model fed an oleic acid-rich diet [39]. The potential benefits of oleic acid supplementation in humans are highlighted by olive oil, which is rich in oleic acid and thought to be protective against age-related cognitive decline and onset of AD [39,41–43]. In a clinical trial, Martinez-Lapiscina et al. [44] showed that patients randomised to an olive oil-rich diet had better cognitive function compared to those on a control diet [44].

Dietary supplementation with the omega-3 fatty acids DHA and EPA has also been shown to improve cognitive performance in several animal studies of AD [45–48]. Previous human studies have also reported promising effects on cognition in individuals receiving either DHA, EPA, or a combination of the two [49–51]. The mechanisms by which DHA supplementation may impact AD may be by modulating a beta deposition in the brain [52]. The potentially protective effects of EPA in the brain may be mediated through competitive inhibition of the action of lipoxygenases (LOX) (Fig 3), cyclooxygenases (COX), and cytochrome P450 (CYP450) against its omega-6 homologue arachidonic acid (ARA) [53–56]. The breakdown of ARA by COX and 5-LOX produces prostaglandin E₂ and leukotriene B₄ [53], which, respectively, are both highly proinflammatory [54], whilst the breakdown of EPA by these enzymes to produce prostaglandin E₃ and leukotriene B₅ is less efficient [53] and whilst they are also proinflammatory, they are less potent than the products of ARA [55,56].

UFAs are also precursors of the eicosanoids, which are a large class of highly potent regulatory lipid hormones (Fig 3), possessing a wide range of biological functions. Studies have shown that DHA and EPA containing phosphatidylcholines (PCs) are reduced in abundance in the blood of patients with AD [12,57,58]. It has been reported that COX, LOX, and CYP450, i.e., enzymes that break down EPA and the other five UFAs measured, have all been shown to be up-regulated in patients with AD [59,60], potentially explaining the decrease in the observed UFA species. Breakdown of EPA and other UFAs by COX leads to the production of prostaglandins with LOX breakdown leading to the production of leukotrienes, and breakdown by CYP450 producing epoxyeicosatrienoic acid (Fig 3), all of which have been associated with pathology in a range of diseases including AD [61–63]. The breakdown of DHA by these three enzymes produces resolvins, maresins, and protectins, which have been shown to be protective against numerous disease pathologies [64–66], including in AD [67,68].

Strengths and limitations

The main strengths of this study are the well-characterized longitudinal BLSA cohort with serial cognitive assessments and detailed neuropathological examination at death. Inclusion of the “ASYMAD” group of individuals allows us to relate the observed shifts in metabolism with

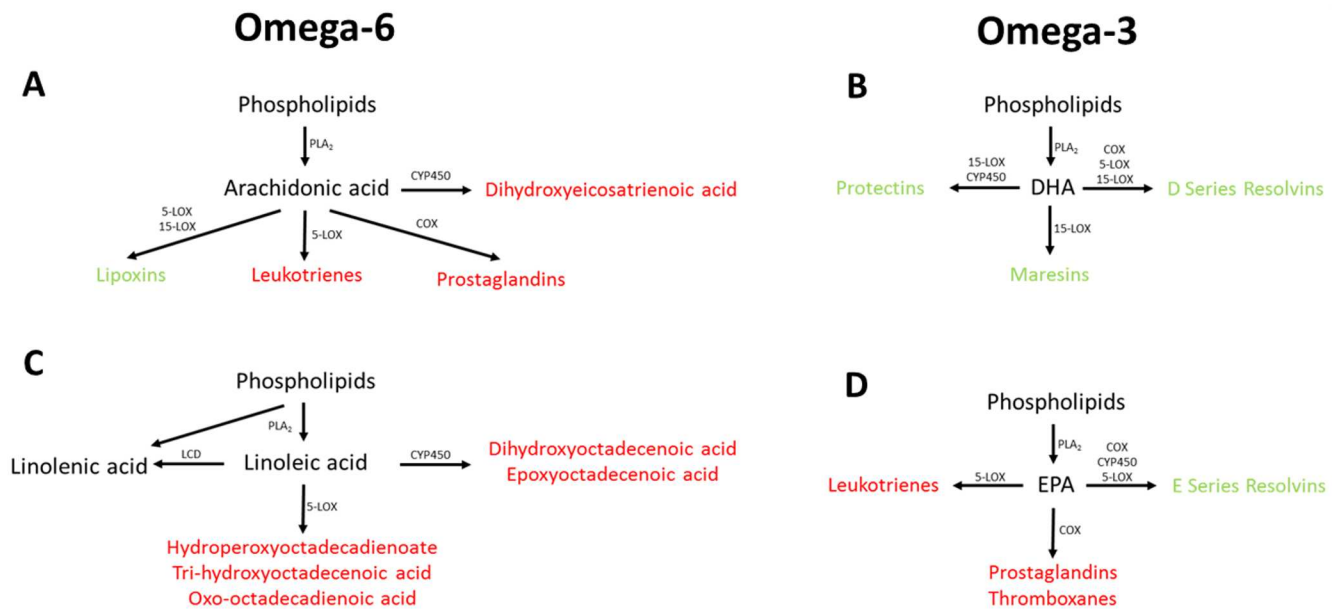


Fig 3. Overview of omega-3 and omega-6 UFA metabolism showing the potential association between the measured UFAs. Metabolites highlighted in red have been associated with increased risk of disease pathology, with metabolites highlighted in green have been associated with decreased risk of disease pathology. COX, cyclooxygenase; CYP450, cytochrome P450; DHA, docosahexaenoic acid; EPA, eicosapentaenoic acid; LCD, lineoyl-CoA desaturase; LOX, lipoxygenase; PLA₂, phospholipase A₂.

doi:10.1371/journal.pmed.1002266.g003

both severity of pathology and the expression of AD symptoms. Inclusion of distinct brain regions representing areas both vulnerable and resistant to AD pathology is another key strength of this study

We applied four distinct metabolomic assays utilising a range of complimentary instruments and chromatographic techniques that together provided a wide coverage of the brain metabolome.

The main limitation of this study is the relatively small sample size. There are few cohorts with extensive longitudinal cognitive assessments during life and detailed neuropathological assessments at death as the BLSA. Our findings therefore merit confirmation in larger studies. Another limitation of this study is one shared by all nontargeted metabolomics approaches, which is the difficulty in assigning metabolite identities to metabolite features within the dataset. With the advent of large publicly available metabolite databases, it is hoped that larger numbers of metabolites will be identified in future studies using these methods.

In summary, we identified significant differences in the abundance of six UFAs in three brain regions with gradations in these metabolites being related to both severity of neuropathology at death as well as domain-specific cognitive performance during life. Our work suggests that dysregulation of UFA's metabolism plays a role in driving AD pathology and that these results provide further evidence for the metabolic basis of AD pathogenesis.

Supporting information

S1 STROBE Checklist.
(DOC)

S1 Table. Summary of the association of all annotated metabolites with disease pathology.
^a *p*-value calculated using mann-whitney U-test. ^b fold change relative to controls. ^c fold

change relative to asymptomatic. AMP; adenosine-monophosphate, Asymp; asymptomatic, Cont; control, Dem; dementia/Alzheimer, GABA; gamma-aminobutanoate, L-DOPA; L-dihydroxy-phenylalanine.

(DOCX)

S2 Table. Summary of the association of all annotated metabolites with brain region. ^a *p*-value calculated using mann-whitney U-test. ^b fold change relative to CB, ^c fold change relative to ITG. AMP; adenosine-monophosphate, CB; cerebellum, GABA; gamma-aminobutanoate, ITG; inferior temporal gyrus, L-DOPA; L-dihydroxy-phenylalanine, MFG; medial frontal gyrus.

(DOCX)

S3 Table. Correlation of the abundance of six UFAs with measures of both cross sectional and longitudinal memory performance. Relationships between global measures of cross sectional and longitudinal memory performance and the regional abundances of six UFAs, values highlighted in bold are significant at $p < 0.05$. * correlation of fatty acid abundance to last memory score before death, + correlation of fatty acid abundance to rate of longitudinal decline in memory. CERAD; Consortium to Establish a Registry for Alzheimer's Disease.

(DOCX)

S4 Table. Correlation of the abundance of six UFAs with measures of both cross sectional and longitudinal language performance. Relationships between global measures of cross sectional and longitudinal language performance and the regional abundances of six UFAs, values highlighted in bold are significant at $p < 0.05$. * correlation of fatty acid abundance to last language score before death, + correlation of fatty acid abundance to rate of longitudinal decline in language. CERAD; Consortium to Establish a Registry for Alzheimer's Disease.

(DOCX)

S5 Table. Correlation of the abundance of six UFAs with measures of both cross sectional and longitudinal attention span. Relationships between global measures of cross sectional and longitudinal attention span performance and the regional abundances of six UFAs, values highlighted in bold are significant at $p < 0.05$. * correlation of fatty acid abundance to last attention span score before death, + correlation of fatty acid abundance to rate of longitudinal decline in attention span. CERAD; Consortium to Establish a Registry for Alzheimer's Disease.

(DOCX)

S6 Table. Correlation of the abundance of six UFAs with measures of both cross sectional and longitudinal executive function. Relationships between global measures of cross sectional and longitudinal attention span performance and the regional abundances of six UFAs, values highlighted in bold are significant at $p < 0.05$. * correlation of fatty acid abundance to last executive function score before death, + correlation of fatty acid abundance to rate of longitudinal decline in executive function score. CERAD; Consortium to Establish a Registry for Alzheimer's Disease.

(DOCX)

S7 Table. Correlation of the abundance of six UFAs with measures of both cross sectional and longitudinal visual spatial awareness. Relationships between global measures of cross sectional and longitudinal attention span performance and the regional abundances of six UFAs, values highlighted in bold are significant at $p < 0.05$. * correlation of fatty acid abundance to last visual spatial awareness score before death, + correlation of fatty acid abundance to rate of longitudinal decline in visual spatial awareness score. CERAD; Consortium to Establish a Registry for Alzheimer's Disease.

(DOCX)

S1 Fig. Scores plots from curated PLS-DA models comparing the metabolite composition of brain regions and diagnostic groups. A) Comparison of metabolite composition of CB, ITG, and MFG ($R^2X = 0.639$, $R^2Y = 0.622$, $Q^2 = 0.608$, CV-ANOVA = 5.65×10^{-33}) B) Comparison of metabolite composition of diagnostic groups, control, asymptomatic, and individuals with dementia ($R^2X = 0.499$, $R^2Y = 0.439$, $Q^2 = 0.404$, CV-ANOVA = 4.72×10^{-21}). (TIF)

S2 Fig. Scores plots from curated PLS-DA models comparing the metabolite composition of diagnostic groups in individual brain regions. A) Comparison of metabolite composition of diagnostic groups, control, asymptomatic, and individuals with dementia in CB samples ($R^2X = 0.527$, $R^2Y = 0.539$, $Q^2 = 0.424$, CV-ANOVA = 5.04×10^{-4}), B) Comparison of metabolite composition of diagnostic groups, control, asymptomatic, and individuals with dementia in ITG samples ($R^2X = 0.592$, $R^2Y = 0.563$, $Q^2 = 0.424$, CV-ANOVA = 3.28×10^{-7}), C) Comparison of metabolite composition of diagnostic groups, control, asymptomatic, and individual with dementia in MFG samples ($R^2X = 0.650$, $R^2Y = 0.563$, $Q^2 = 0.490$, CV-ANOVA = 1.62×10^{-5}). (TIF)

S3 Fig. Forest plot showing the relationship of the abundance of six UFAs in the CB and five measures of cognition. A) association between fatty acid abundance of UFA levels and longitudinal cognitive performance B) associations between fatty acid abundance cognitive performance at the last visit prior to death. AA: arachidonic acid, DHA: docosahexaenoic acid, EPA: eicosapentaenoic acid, LA: linoleic acid, LNA: linolenic acid, OLA: oleic acid. (TIF)

S4 Fig. Forest plot showing the relationship of the abundance of six UFAs in the ITG and five measures of cognition. A) association between fatty acid abundance of UFA levels and longitudinal cognitive performance B) associations between fatty acid abundance cognitive performance at the last visit prior to death. AA: arachidonic acid, DHA: docosahexaenoic acid, EPA: eicosapentaenoic acid, LA: linoleic acid, LNA: linolenic acid, OLA: oleic acid. (TIF)

S1 Text. Analysis plan.
(DOCX)

Acknowledgments

We would like to thank Dr Mathew Arno manager of the genomics centre for permitting us to use his TissueLyzer. We are grateful to participants in the BLSA for their invaluable contribution.

Author Contributions

Conceptualization: CLQ MT OP RO JT SGS AAE AH YA.

Data curation: SGS AAE CLQ YA.

Formal analysis: SGS YA.

Funding acquisition: CLQ MT AH.

Investigation: SGS AAE.

Methodology: SGS AAE CLQ.

Project administration: CLQ MT.

Resources: AH MT CLQ.

Supervision: CLQ MT.

Visualization: SGS YA.

Writing – original draft: SGS.

Writing – review & editing: SGS CLQ MT AAE YA AH JT ROB OP.

References

1. Reitz C, Brayne C, Mayeux R Epidemiology of Alzheimer disease. *Nature Reviews Neurology*.2011; 7: 137–152. doi: [10.1038/nrneurol.2011.2](https://doi.org/10.1038/nrneurol.2011.2) PMID: [21304480](https://pubmed.ncbi.nlm.nih.gov/21304480/)
2. <http://www.alz.org/what-is-dementia.asp>.
3. Alzheimer's Disease International: World Alzheimer's report 2015, the global impact of dementia: an analysis of prevalence, incidence, cost and trends. 2015.
4. de la Monte SM, Tong M Brain metabolic dysfunction at the core of Alzheimer's disease. *Biochemical Pharmacology*.2014; 88: 548–559. doi: [10.1016/j.bcp.2013.12.012](https://doi.org/10.1016/j.bcp.2013.12.012) PMID: [24380887](https://pubmed.ncbi.nlm.nih.gov/24380887/)
5. Snowden S, Dahlén S-E, Wheelock CE Application of metabolomics approaches to the study of respiratory diseases. *Bioanalysis*.2012; 4: 2265–2290. doi: [10.4155/bio.12.218](https://doi.org/10.4155/bio.12.218) PMID: [23046268](https://pubmed.ncbi.nlm.nih.gov/23046268/)
6. Fiehn O (2002) Metabolomics—the link between genotypes and phenotypes. In: Town C, editor. *Functional Genomics*: Springer Netherlands. pp. 155–171.
7. Ebshiana AA, Snowden SG, Thambisetty M, Parsons R, Hye A, et al. Metabolomic Method: UPLC-q-ToF Polar and Non-Polar Metabolites in the Healthy Rat Cerebellum Using an In-Vial Dual Extraction. *PLoS ONE*.2015; 10: e0122883. doi: [10.1371/journal.pone.0122883](https://doi.org/10.1371/journal.pone.0122883) PMID: [25853858](https://pubmed.ncbi.nlm.nih.gov/25853858/)
8. Greenberg N, Grassano A, Thambisetty M, Lovestone S, Legido-Quigley C A proposed metabolic strategy for monitoring disease progression in Alzheimer's disease. *ELECTROPHORESIS*.2009; 30: 1235–1239. doi: [10.1002/elps.200800589](https://doi.org/10.1002/elps.200800589) PMID: [19288586](https://pubmed.ncbi.nlm.nih.gov/19288586/)
9. Han X, Rozen S, Boyle SH, Hellegers C, Cheng H, et al. Metabolomics in Early Alzheimer's Disease: Identification of Altered Plasma Sphingolipidome Using Shotgun Lipidomics. *PLoS ONE*.2011; 6: e21643. doi: [10.1371/journal.pone.0021643](https://doi.org/10.1371/journal.pone.0021643) PMID: [21779331](https://pubmed.ncbi.nlm.nih.gov/21779331/)
10. Kaddurah-Daouk R, Rozen S, Matson W, Han X, Hulette CM, et al. Metabolomic changes in autopsy-confirmed Alzheimer's disease. *Alzheimer's & Dementia*.2011; 7: 309–317.
11. Oresic M, Hyotylainen T, Herukka SK, Sysi-Aho M, Mattila I, et al. Metabolome in progression to Alzheimer's disease. *Transl Psychiatry*.2011; 1: e57. doi: [10.1038/tp.2011.55](https://doi.org/10.1038/tp.2011.55) PMID: [22832349](https://pubmed.ncbi.nlm.nih.gov/22832349/)
12. Whiley L, Sen A, Heaton J, Proitsi P, García-Gómez D, et al. Evidence of altered phosphatidylcholine metabolism in Alzheimer's disease. *Neurobiology of Aging*.2014; 35: 271–278. doi: [10.1016/j.neurobiolaging.2013.08.001](https://doi.org/10.1016/j.neurobiolaging.2013.08.001) PMID: [24041970](https://pubmed.ncbi.nlm.nih.gov/24041970/)
13. Mapstone M, Cheema AK, Fiandaca MS, Zhong X, Mhyre TR, et al. Plasma phospholipids identify antecedent memory impairment in older adults. *Nat Med*.2014; 20: 415–418. doi: [10.1038/nm.3466](https://doi.org/10.1038/nm.3466) PMID: [24608097](https://pubmed.ncbi.nlm.nih.gov/24608097/)
14. Salek RM, Xia J, Innes A, Sweatman BC, Adalbert R, et al. A metabolomic study of the CRND8 transgenic mouse model of Alzheimer's disease. *Neurochemistry International*.2010; 56: 937–947. doi: [10.1016/j.neuint.2010.04.001](https://doi.org/10.1016/j.neuint.2010.04.001) PMID: [20398713](https://pubmed.ncbi.nlm.nih.gov/20398713/)
15. Graham SF, Chevallier OP, Roberts D, Hölscher C, Elliott CT, et al. Investigation of the Human Brain Metabolome to Identify Potential Markers for Early Diagnosis and Therapeutic Targets of Alzheimer's Disease. *Analytical Chemistry*.2013; 85: 1803–1811. doi: [10.1021/ac303163f](https://doi.org/10.1021/ac303163f) PMID: [23252551](https://pubmed.ncbi.nlm.nih.gov/23252551/)
16. Inoue K, Tsutsui H, Akatsu H, Hashizume Y, Matsukawa N, et al. Metabolic profiling of Alzheimer's disease brains. *Scientific Reports*.2013; 3: 2364. doi: [10.1038/srep02364](https://doi.org/10.1038/srep02364) PMID: [23917584](https://pubmed.ncbi.nlm.nih.gov/23917584/)
17. Braak H, Braak E Diagnostic Criteria for Neuropathologic Assessment of Alzheimer's Disease. *Neurobiology of Aging*.1997; 18: S85–S88. PMID: [9330992](https://pubmed.ncbi.nlm.nih.gov/9330992/)
18. Jellinger KA, Baner C (1998) Neuropathology of Alzheimer's disease: a critical update. In: Gertz HJ, Arendt T, editors. *Alzheimer's Disease—From Basic Research to Clinical Applications*. Vienna: Springer Vienna. pp. 77–95.
19. Bennett DA, Schneider JA, Arvanitakis Z, Kelly JF, Aggarwal NT, et al. Neuropathology of older persons without cognitive impairment from two community-based studies. *Neurology*.2006; 66: 1837–1844. doi: [10.1212/01.wnl.0000219668.47116.e6](https://doi.org/10.1212/01.wnl.0000219668.47116.e6) PMID: [16801647](https://pubmed.ncbi.nlm.nih.gov/16801647/)

20. Iacono D, Resnick SM, O'Brien R, Zonderman AB, An Y, et al. Mild Cognitive Impairment and Asymptomatic Alzheimer Disease Subjects: Equivalent β -Amyloid and Tau Loads With Divergent Cognitive Outcomes. *Journal of Neuropathology & Experimental Neurology*.2014; 73: 295–304.
21. Lerner AJ The Cerebellum in Alzheimer's Disease. *Dementia and Geriatric Cognitive Disorders*.1997; 8: 203–209. PMID: [9213064](#)
22. Shock NW, Grulich R, Andres R, Arenberg D, Costa PT, et al. Normal human aging. The Baltimore Longitudinal Study of Aging Washington DC. US Government Printing Office.1984.
23. Ferrucci L The Baltimore Longitudinal Study of Aging (BLSA): A 50-Year-Long Journey and Plans for the Future. *The Journals of Gerontology Series A: Biological Sciences and Medical Sciences*.2008; 63: 1416–1419.
24. Kawas C, Gray S, Brookmeyer R, Fozard J, Zonderman A Age-specific incidence rates of Alzheimer's disease: The Baltimore Longitudinal Study of Aging. *Neurology*.2000; 54: 2072–2077. PMID: [10851365](#)
25. American Psychiatric Association. American Psychiatric Association APAWGtRDSM, III. Diagnostic and statistical manual of mental disorders. 1987.
26. McKhann G, Drachman D, Folstein M, Katzman R, Price D, et al. Clinical diagnosis of Alzheimer's disease: Report of the NINCDS-ADRDA Work Group* under the auspices of Department of Health and Human Services Task Force on Alzheimer's Disease. *Neurology*.1984; 34: 939. PMID: [6610841](#)
27. O'Brien RJ, Resnick SM, Zonderman AB, Ferrucci L, Crain BJ, et al. Neuropathologic Studies of the Baltimore Longitudinal Study of Aging (BLSA). *Journal of Alzheimer's disease: JAD*.2009; 18: 665–675. doi: [10.3233/JAD-2009-1179](#) PMID: [19661626](#)
28. Gamaldo A, Moghekar A, Kilada S, Resnick SM, Zonderman AB, et al. Effect of a clinical stroke on the risk of dementia in a prospective cohort. *Neurology*.2006; 67: 1363–1369. doi: [10.1212/01.wnl.0000240285.89067.3f](#) PMID: [17060561](#)
29. Kanehisa M, Goto S KEGG: Kyoto Encyclopedia of Genes and Genomes. *Nucleic Acids Research*.2000; 28: 27–30. PMID: [10592173](#)
30. de Calignon A, Polydoro M, Suárez-Calvet M, William C, Adamowicz David H, et al. Propagation of Tau Pathology in a Model of Early Alzheimer's Disease. *Neuron*.2012; 73: 685–697. doi: [10.1016/j.neuron.2011.11.033](#) PMID: [22365544](#)
31. Hardy JA, Higgins GA Alzheimer's Disease: The Amyloid Cascade Hypothesis. *Science*.1992; 256: 184. PMID: [1566067](#)
32. Iqbal K, del C. Alonso A, Chen S, Chohan MO, El-Akkad E, et al. Tau pathology in Alzheimer disease and other tauopathies. *Biochimica et Biophysica Acta (BBA)—Molecular Basis of Disease*.2005; 1739: 198–210.
33. Whiley L, Godzien J, Ruperez FJ, Legido-Quigley C, Barbas C In-Vial Dual Extraction for Direct LC-MS Analysis of Plasma for Comprehensive and Highly Reproducible Metabolic Fingerprinting. *Analytical Chemistry*.2012; 84: 5992–5999. doi: [10.1021/ac300716u](#) PMID: [22702345](#)
34. Xu J, Begley P, Church SJ, Patassini S, Hollywood KA, et al. Graded perturbations of metabolism in multiple regions of human brain in Alzheimer's disease: Snapshot of a pervasive metabolic disorder. *Biochimica et Biophysica Acta (BBA)—Molecular Basis of Disease*.2016.
35. Nasaruddin ML, Hölscher C, Kehoe P, Graham SF, Green BD Wide-ranging alterations in the brain fatty acid complement of subjects with late Alzheimer's disease as detected by GC-MS. *American Journal of Translational Research*.2016; 8: 154–165. PMID: [27069549](#)
36. Cunnane SC, Schneider JA, Christine T, Tremblay-Mercier J, Fortier M, et al. Plasma and brain fatty acid profiles in mild cognitive impairment and Alzheimer's disease. *Journal of Alzheimer's disease: JAD*.2012; 29: 691–697. doi: [10.3233/JAD-2012-110629](#) PMID: [22466064](#)
37. Amtul Z, Uhrig M, Wang L, Rozmahel RF, Beyreuther K Detrimental effects of arachidonic acid and its metabolites in cellular and mouse models of Alzheimer's disease: structural insight. *Neurobiology of Aging*.2012; 33: 831.e821–831.e831.
38. Wilson DM, Binder LI Free fatty acids stimulate the polymerization of tau and amyloid beta peptides. In vitro evidence for a common effector of pathogenesis in Alzheimer's disease. *The American Journal of Pathology*.1997; 150: 2181–2195. PMID: [9176408](#)
39. Amtul Z, Westaway D, Cechetto DF, Rozmahel RF Oleic Acid Ameliorates Amyloidosis in Cellular and Mouse Models of Alzheimer's Disease. *Brain Pathology*.2011; 21: 321–329. doi: [10.1111/j.1750-3639.2010.00449.x](#) PMID: [21040071](#)
40. Park Y-S, Jang H-J, Lee K-H, Hahn T-R, Paik Y-S Prolyl Endopeptidase Inhibitory Activity of Unsaturated Fatty Acids. *Journal of Agricultural and Food Chemistry*.2006; 54: 1238–1242. doi: [10.1021/jf052521h](#) PMID: [16478242](#)

41. López-Miranda J, Pérez-Jiménez F, Ros E, De Caterina R, Badimón L, et al. Olive oil and health: Summary of the II international conference on olive oil and health consensus report, Jaén and Córdoba (Spain) 2008. *Nutrition, Metabolism and Cardiovascular Diseases*.2010; 20: 284–294. doi: [10.1016/j.numecd.2009.12.007](https://doi.org/10.1016/j.numecd.2009.12.007) PMID: [20303720](https://pubmed.ncbi.nlm.nih.gov/20303720/)
42. Valls-Pedret C, Sala-Vila A, Serra-Mir M, et al. Mediterranean diet and age-related cognitive decline: A randomized clinical trial. *JAMA Internal Medicine*.2015; 175: 1094–1103. doi: [10.1001/jamainternmed.2015.1668](https://doi.org/10.1001/jamainternmed.2015.1668) PMID: [25961184](https://pubmed.ncbi.nlm.nih.gov/25961184/)
43. Pelletier A, Barul C, Féart C, Helmer C, Bernard C, et al. Mediterranean diet and preserved brain structural connectivity in older subjects. *Alzheimer's & Dementia*.2015; 11: 1023–1031.
44. Martínez-Lapiscina EH, Clavero P, Toledo E, San Julian B, Sanchez-Tainta A, et al. Virgin olive oil supplementation and long-term cognition: the Predimed-Navarra randomized, trial. *The journal of nutrition, health & aging*.2013; 17: 544–552.
45. Hashimoto M, Hossain S, Shimada T, Sugioka K, Yamasaki H, et al. Docosahexaenoic acid provides protection from impairment of learning ability in Alzheimer's disease model rats. *Journal of Neurochemistry*.2002; 81: 1084–1091. PMID: [12065621](https://pubmed.ncbi.nlm.nih.gov/12065621/)
46. Cole GM, Frautschy SA Docosahexaenoic Acid Protects from Amyloid and Dendritic Pathology in an Alzheimer's Disease Mouse Model. *Nutrition and Health*.2006; 18: 249–259. doi: [10.1177/026010600601800307](https://doi.org/10.1177/026010600601800307) PMID: [17180870](https://pubmed.ncbi.nlm.nih.gov/17180870/)
47. Cole GM, Frautschy SA DHA May Prevent Age-Related Dementia. *The Journal of Nutrition*.2010; 140: 869–874. doi: [10.3945/jn.109.113910](https://doi.org/10.3945/jn.109.113910) PMID: [20181786](https://pubmed.ncbi.nlm.nih.gov/20181786/)
48. Swanson D, Block R, Mousa SA Omega-3 Fatty Acids EPA and DHA: Health Benefits Throughout Life. *Advances in Nutrition: An International Review Journal*.2012; 3: 1–7.
49. Freund-Levi Y, Eriksdotter-Jönhagen M, Cederholm T, et al. Ω -3 fatty acid treatment in 174 patients with mild to moderate alzheimer disease: Omegad study: a randomized double-blind trial. *Archives of Neurology*.2006; 63: 1402–1408. doi: [10.1001/archneur.63.10.1402](https://doi.org/10.1001/archneur.63.10.1402) PMID: [17030655](https://pubmed.ncbi.nlm.nih.gov/17030655/)
50. Morris M, Evans DA, Bienias JL, et al. COnsumption of fish and n-3 fatty acids and risk of incident alzheimer disease. *Archives of Neurology*.2003; 60: 940–946. doi: [10.1001/archneur.60.7.940](https://doi.org/10.1001/archneur.60.7.940) PMID: [12873849](https://pubmed.ncbi.nlm.nih.gov/12873849/)
51. Quinn JF, Raman R, Thomas RG, et al. Docosahexaenoic acid supplementation and cognitive decline in alzheimer disease: A randomized trial. *JAMA*.2010; 304: 1903–1911. doi: [10.1001/jama.2010.1510](https://doi.org/10.1001/jama.2010.1510) PMID: [21045096](https://pubmed.ncbi.nlm.nih.gov/21045096/)
52. Grimm MOW, Kuchenbecker J, Grösgen S, Burg VK, Hundsdoerfer B, et al. Docosahexaenoic Acid Reduces Amyloid β Production via Multiple Pleiotropic Mechanisms. *Journal of Biological Chemistry*.2011; 286: 14028–14039. doi: [10.1074/jbc.M110.182329](https://doi.org/10.1074/jbc.M110.182329) PMID: [21324907](https://pubmed.ncbi.nlm.nih.gov/21324907/)
53. James MJ, Gibson RA, Cleland LG Dietary polyunsaturated fatty acids and inflammatory mediator production. *The American Journal of Clinical Nutrition*.2000; 71: 343s–348s. PMID: [10617994](https://pubmed.ncbi.nlm.nih.gov/10617994/)
54. Rola-Pleszczynski M, Thivierge M, Gagnon N, Lacasse C, Stankova J Differential regulation of cytokine and cytokine receptor genes by PAF, LTB4 and PGE2. *Journal of lipid mediators*.1993; 6: 175–181. PMID: [8395242](https://pubmed.ncbi.nlm.nih.gov/8395242/)
55. Hawkes JS, James MJ, Cleland LG Biological activity of prostaglandin E3 with regard to oedema formation in mice. *Agents and Actions*.1992; 35: 85–87. PMID: [1509981](https://pubmed.ncbi.nlm.nih.gov/1509981/)
56. Goldman DW, Pickett WC, Goetzl EJ Human neutrophil chemotactic and degranulating activities of leukotriene B5 (LTB5) derived from eicosapentaenoic acid. *Biochemical and Biophysical Research Communications*.1983; 117: 282–288. PMID: [6318749](https://pubmed.ncbi.nlm.nih.gov/6318749/)
57. Schaefer EJ, Bongard V, Beiser AS, et al. Plasma phosphatidylcholine docosahexaenoic acid content and risk of dementia and alzheimer disease: The framingham heart study. *Archives of Neurology*.2006; 63: 1545–1550. doi: [10.1001/archneur.63.11.1545](https://doi.org/10.1001/archneur.63.11.1545) PMID: [17101822](https://pubmed.ncbi.nlm.nih.gov/17101822/)
58. Simpson BN, Kim M, Chuang Y-F, Beason-Held L, Kitner-Triolo M, et al. Blood metabolite markers of cognitive performance and brain function in aging. *Journal of Cerebral Blood Flow & Metabolism*.2015.
59. Ikonovic MD, Abrahamson EE, Uz T, Manev H, DeKosky ST Increased 5-Lipoxygenase Immunoreactivity in the Hippocampus of Patients With Alzheimer's Disease. *Journal of Histochemistry & Cytochemistry*.2008; 56: 1065–1073.
60. Manev H 5-Lipoxygenase gene polymorphism and onset of Alzheimer's disease. *Medical Hypotheses*.2000; 54: 75–76. doi: [10.1054/mehy.1998.0824](https://doi.org/10.1054/mehy.1998.0824) PMID: [10790729](https://pubmed.ncbi.nlm.nih.gov/10790729/)
61. Bazan NG, Colangelo V, Lukiw WJ Prostaglandins and other lipid mediators in Alzheimer's disease. *Prostaglandins & Other Lipid Mediators*.2002; 68–69: 197–210.
62. Funk CD Prostaglandins and Leukotrienes: Advances in Eicosanoid Biology. *Science*.2001; 294: 1871–1875. doi: [10.1126/science.294.5548.1871](https://doi.org/10.1126/science.294.5548.1871) PMID: [11729303](https://pubmed.ncbi.nlm.nih.gov/11729303/)

63. Sanchez-Mejia RO, Newman JW, Toh S, Yu G-Q, Zhou Y, et al. Phospholipase A2 reduction ameliorates cognitive deficits in a mouse model of Alzheimer's disease. *Nat Neurosci*.2008; 11: 1311–1318. doi: [10.1038/nn.2213](https://doi.org/10.1038/nn.2213) PMID: [18931664](https://pubmed.ncbi.nlm.nih.gov/18931664/)
64. Serhan CN, Yang R, Martinod K, Kasuga K, Pillai PS, et al. Maresins: novel macrophage mediators with potent antiinflammatory and proresolving actions. *The Journal of Experimental Medicine*.2009; 206: 15–23. doi: [10.1084/jem.20081880](https://doi.org/10.1084/jem.20081880) PMID: [19103881](https://pubmed.ncbi.nlm.nih.gov/19103881/)
65. Serhan CN, Hong S, Gronert K, Colgan SP, Devchand PR, et al. Resolvins: A Family of Bioactive Products of Omega-3 Fatty Acid Transformation Circuits Initiated by Aspirin Treatment that Counter Proinflammation Signals. *The Journal of Experimental Medicine*.2002; 196: 1025–1037. doi: [10.1084/jem.20020760](https://doi.org/10.1084/jem.20020760) PMID: [12391014](https://pubmed.ncbi.nlm.nih.gov/12391014/)
66. Ariel A, Serhan CN Resolvins and protectins in the termination program of acute inflammation. *Trends in Immunology*.2007; 28: 176–183. doi: [10.1016/j.it.2007.02.007](https://doi.org/10.1016/j.it.2007.02.007) PMID: [17337246](https://pubmed.ncbi.nlm.nih.gov/17337246/)
67. Mizwicki MT, Liu G, Fiala M, Magpantay L, Sayre J, et al. 1 α ,25-Dihydroxyvitamin D(3) and Resolvin D1 Retune the Balance between Amyloid- β Phagocytosis and Inflammation in Alzheimer's Disease Patients. *Journal of Alzheimer's disease: JAD*.2013; 34: 155–170. doi: [10.3233/JAD-121735](https://doi.org/10.3233/JAD-121735) PMID: [23186989](https://pubmed.ncbi.nlm.nih.gov/23186989/)
68. Farooqui AA Lipid mediators and their metabolism in the nucleous: implications for Alzheimer's disease. *Journal of Alzheimer's disease: JAD*.2012; 30 Suppl 2: S163–178.