

Anti-inflammatory effect of lycopene in SW480 human colorectal cancer cells

Jae Hoon Cha¹, Woo Kyoung Kim¹, Ae Wha Ha¹, Myung Hwan Kim² and Moon Jeong Chang³

¹Department of Food Science and Nutrition, Dankook University, Gyeonggi 16890, Korea

²Department of Food Engineering, Dankook University, Chungnam 31116, Korea

³Department of Food and Nutrition, Kookmin University, 77 Jeongneung-Ro, Seongbuk-gu, Seoul 02707, Korea

BACKGROUND/OBJECTIVES: Although the antioxidative effects of lycopene are generally known, the molecular mechanisms underlying the anti-inflammatory properties of lycopene are not fully elucidated. This study aimed to examine the role and mechanism of lycopene as an inhibitor of inflammation.

METHODS/MATERIALS: Lipopolysaccharide (LPS)-stimulated SW 480 human colorectal cancer cells were treated with 0, 10, 20, and 30 μ M lycopene. The MTT assay was performed to determine the effects of lycopene on cell proliferation. Western blotting was performed to observe the expression of inflammation-related proteins, including nuclear factor-kappa B (NF- κ B), inhibitor kappa B ($I\kappa$ B), mitogen-activated protein kinase (MAPK), extracellular signal-related kinase (ERK), c-jun NH2-terminal kinase (JNK), and p38 (p38 MAP kinase). Real-time polymerase chain reaction was performed to investigate the mRNA expression of tumor necrosis factor α (TNF- α), interleukin-1 beta (IL-1 β), interleukin-6 (IL-6), inducible nitric oxide synthase (iNOS), and cyclooxygenase-2 (COX-2). Concentrations of nitric oxide (NO) and prostaglandin E₂ (PGE₂) were determined via enzyme-linked immunosorbent assays.

RESULTS: In cells treated with lycopene and LPS, the mRNA expression of TNF- α , IL-1 β , IL-6, iNOS, and COX-2 were decreased significantly in a dose-dependent manner ($P < 0.05$). The concentrations of PGE₂ and NO decreased according to the lycopene concentration ($P < 0.05$). The protein expressions of NF- κ B and JNK were decreased significantly according to lycopene concentration ($P < 0.05$).

CONCLUSIONS: Lycopene restrains NF- κ B and JNK activation, which causes inflammation, and suppresses the expression of TNF- α , IL-1 β , IL-6, COX-2, and iNOS in SW480 human colorectal cancer cells.

Nutrition Research and Practice 2017;11(2):90-96; <https://doi.org/10.4162/nrp.2017.11.2.90>; pISSN 1976-1457 eISSN 2005-6168

Keywords: Lycopene, colorectal cancer, inflammation, nitric oxide, prostaglandin

INTRODUCTION

In Korea, cancer has emerged as one of the most problematic diseases. Although the rates of lung cancer, liver cancer, and gastric cancer have decreased continuously since 2000, the death rate associated with colorectal cancer (CRC) has increased with age from 1999 to 2012 at an average annual increase rate of 5.2% [1,2]. In 2013, CRC was the third-most common type of cancer among South Korean cancer patients, with an incidence of 12.3% (behind thyroid and stomach cancer) and was the second-most common type among men (14.6%) and third-most common among women (9.9%) [3].

Inflammation is the local reaction of an area of the body to tissue damage and is characterized by symptoms such as swelling, fever, and pain. During acute inflammation, immune cells eliminate viruses or other pathogens through various

processes. In the context of a sustained or repeated inflammatory response, various cytokines are secreted to damage the functions of macrophages [4]. It is generally accepted that chronic sustained inflammation, caused by high fat diet, obesity, or low vegetable consumption, are related with the CRC development [4-6]. Furthermore, CRC patients who exhibit inflammatory responses tend to have a higher tumor recurrence rate and increased number of side effects to medical and surgical treatment than those without inflammatory responses [7].

The inflammation cascade signaling molecules are the source of clinical targets that when antagonized, block the physiological effect of the cascade or pathway. Some of inflammatory cytokines, including tumor necrosis factor α (TNF- α), interleukin-1 beta (IL-1 β), and interleukin-6 (IL-6), as well as inflammation-inducing enzymes, such as cyclooxygenase-2 (COX-2) and inducible nitric oxide synthase (iNOS), were revealed to implicate in CRC [8].

This research was supported by the Cooperative Research Program(pj01130502) for Agriculture Science and Technology Development of the Rural Development Administration, Republic of Korea

⁵ Corresponding Author: Moon Jeong Chang, Tel. 82-2-910-4776, Fax. 82-22-910-5249, Email. cmoon@kookmin.ac.kr

Received: June 29, 2016, Revised: August 7, 2016, Accepted: November 22, 2016

This is an Open Access article distributed under the terms of the Creative Commons Attribution Non-Commercial License (<http://creativecommons.org/licenses/by-nc/3.0/>) which permits unrestricted non-commercial use, distribution, and reproduction in any medium, provided the original work is properly cited.

Therefore inhibitors of these inflammatory pathways could be ideal against CRC.

Lycopene is a main component of red-colored fruits and vegetables, composing of 40 carbon atoms linked through unsaturated and conjugated double bonds [9]. Lycopene has been reported to exert anti-inflammatory and anticancer effects and lycopene intake has been found to relate with decreases in the incidence of breast cancer, prostate cancer, and lung cancer [9-12]. Giovannucci *et al.* [13] reported that the consumption of tomatoes or lycopene correlated negatively with the incidence rate of CRC. However, no previous study has investigated the anti-inflammatory effects of lycopene in SW 480 cell (CRC cell). Therefore here we evaluated whether lycopene proliferates SW480 human CRC cell and targets nuclear factor-kappa B (NF- κ B) activation and associated signaling as a mechanism of its anti-inflammatory effects in CRC.

MATERIALS AND METHODS

Materials

Lycopene was purchased from Sigma (St. Louis, MO, USA) and was dissolved in dimethyl sulfoxide (DMSO). Cell culture media was purchased from Welgene (Gyeongsangbuk-do, South Korea). Western blotting antibodies against β -actin, extracellular signal-related kinase (ERK), c-jun NH2-terminal kinase (JNK), p38 (p38 MAP kinase), NF- κ B and inhibitor kappa B (I κ B) were purchased from Cell Signaling Technologies (Danvers, MA, USA).

Cell culture and treatment

SW480 human colorectal cancer cells were purchased from a Korean cell line bank. Cells were maintained in Dulbecco's modified Eagle's medium/Nutrient Mixture Ham's F12 (DMEM/F12; Welgene, Korea) containing 10% fetal bovine serum (FBS; Welgene, Korea), 100 units/mL penicillin, and 100 μ g/mL streptomycin in a 37°C, 5% CO₂ incubator. The medium was replaced every 2-3 days for subculture.

Analysis of cell viability

Cells were plated in 24-well plates at a density of 2.5×10^4 cells/mL. After 48 h, the medium was replaced with serum-free media (SFM) to induce serum starvation for the next 24 h. After an overnight incubation, the cells were treated with various concentrations of lycopene (0-30 μ M) in the presence or absence of Lipopolysaccharide (LPS) to induce inflammation (100 ng/mL), according to the experimental design. An MTT assay was performed, as previously described [14], every 0, 24, 48, and 96 h during experimental treatments, after which the optical density of the plates was measured at 490 nm on a microplate reader (Tecan, Groedig, Austria).

Western blotting analysis

Cells treated with lycopene in the presence or absence of LPS were collected and washed with ice-cold phosphate-buffered saline (PBS), and the resulting cell pellets were suspended in 400 μ L of RIPA lysis buffer (Cell Signaling Technology). Subsequently, the lysates were then mixed in an oscillator for 30 min and centrifuged (12,000 g at 4°C) for 5 min to obtain the cytosolic fraction. Protein concentrations were

determined using the Bradford assay (Bio-Rad, Munich, Germany) according to the manufacturer's instructions.

Samples of cellular protein from cell extracts were separated using 8-10% sodium dodecyl sulfate polyacrylamide gel electrophoresis (SDS-PAGE) and transferred to membranes. Antibodies against β -actin, ERK, JNK, p38, NF- κ B, and I κ B were diluted in 5% milk or BSA/TBST (20 mM Tris-HCl, 0.1% Tween 20, 137 mM NaCl, pH 7.4) and applied to membranes, followed by an overnight incubation at 4°C. After three 10-20 min washes in TBST, the membranes were incubated for 2-3 h in anti-mouse or rabbit IgG (Cell Signaling). After another series of washes in TBST, enhanced chemiluminescent (ECL) detection solution (Bio-Rad) was added to the blots for 0.5-2 min. The blots were then exposed to X-Omat Film (Kodak), and the molecular weights of the detected bands were compared against a high molecular weight marker. Each band concentration was calculated using Image J Launcher (National Institutes of Health, Bethesda, MD, USA), imaging programs [15].

mRNA expression analysis using real-time polymerase chain reaction (PCR)

Total RNA was extracted using TRIzol reagent (Sigma). A 5 μ g aliquot of extracted RNA was subjected to reverse transcription to generate cDNA. A 2 μ L sample of cDNA was then mixed with 6 μ L of nuclease-free water, 10 μ L of 2X SYBR Green Master Mix (Applied Biosystems, Foster City, CA, USA), and 1 μ L each of primer (forward/reverse) and subjected to PCR. The primers used for each experiment are shown in Table 1. Applied Biosystems Step One software v2.1 was used to set the following conditions: 10 min at 95°C, followed by 40 cycles of 15 min in 95°C, 1 min at 60°C, 15 min at 95°C, 1 min at 60°C, and 15 min in 95°C. Data were analyzed using a program included in the Applied Biosystems StepOne software v2.1 package, using the $\Delta\Delta$ CT method. Each experiment was repeated three times [16,17].

Analysis of prostaglandin E₂ and nitric oxide

After treating SW480 cells with media containing 100 ng/mL LPS and 0, 10, 20, or 30 μ M lycopene, cell supernatants were collected and prostaglandin E₂ (PGE₂) concentrations were determined using an enzyme-linked immunosorbent assay (ELISA) kit (ADI-900-001; Enzo Life Sciences, Farmingdale, NY,

Table 1. Primer sequences used for real time PCR

Gene ¹⁾	Primer	Sequence
TNF- α	Forward	5'-CAG AGG GAA GAG TTC CCC AG-3'
	Reverse	5'-CCT TGG TCT GGT AGG AGA CG-3'
iNOS	Forward	5'-CGG TGC TGT ATT TCC TTA CGA GGC GAA-3'
	Reverse	5'-GGT GCT GTC TGT TAG GAG GTC AAG TAA-3'
COX-2	Forward	5'-TCC TTG CTG TTC CCA CCC ATG-3'
	Reverse	5'-CAT CAT CAG ACC AGG CAC CAG-3'
IL-1 β	Forward	5'-GTA GCC CAC GTC GTA GCA AA-3'
	Reverse	5'-CCC TTC TCC AGC TGG GAG AC-3'
GAPDH	Forward	5'-GAA GGT GAA GGT CGG AGT C-3'
	Reverse	5'-GAA GAT GGT GAT GGG ATT TC-3'

¹⁾ TNF- α , Tumor Necrosis Factor-alpha; IL-1 β , Interleukin-1 beta; IL-6, Interleukin-6; iNOS, Inducible NO synthase; COX-2, Cyclooxygenase-2; GAPDH, Glyceraldehyde-3-phosphate dehydrogenase.

USA) [18]. To determine the concentrations of nitric oxide (NO), the cell supernatant was mixed with Griess reagent at a ratio of 1:1 in a 96-well plate and allowed to react for 10 min. Subsequently, the absorbance in each well at 540 nm was determined using a microplate reader (Infinite 200; TECAN, Grödig, Austria) [19].

Statistical Analysis

At least three independent repeats of all experiments in this study were performed, and the obtained results were analyzed using SPSS (version 23; SPSS, Inc., Chicago, IL, USA) to calculate the mean and standard deviation of each group. After performing the analysis of variance (ANOVA), the differences among the groups were calculated using Duncan's multiple range test; significance was defined as an α level < 0.05.

RESULTS

Effects of lycopene on cytotoxicity in SW480 cells

When cells treated with lycopene (0-30 μ M) for 0, 24, 48, and 96 h were subjected to the MTT assay, lycopene was found to inhibit proliferation in a concentration-dependent manner at 96 h ($P < 0.05$; Fig. 1). Subsequently, cells were treated with lycopene for 24 h and additionally with LPS (100 ng/mL) for another 18 h to induce inflammation. Treatment with both LPS and lycopene did not affect cell proliferation; therefore, this condition was used for the remainder of the experiments.

When MTT assay was performed after SW 480 cell were

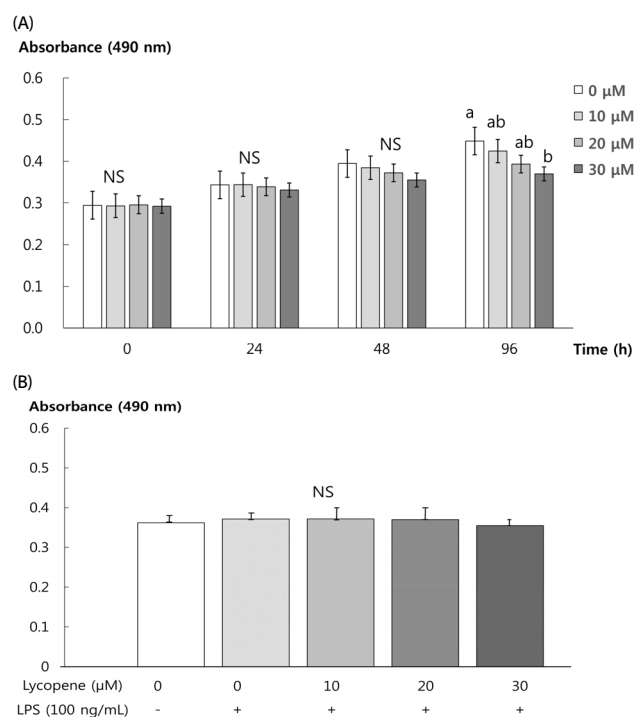


Fig. 1. Effect of lycopene on cell proliferation in SW480 cells. The effect of lycopene on viable cell numbers were estimated by the MTT assay (A). The effect of lycopene and LPS on viable cell numbers after 24 h incubation the MTT assay (B). Each graph represents the mean \pm SE of three independent experiments. Comparison among concentration of lycopene that yielded significant differences at $\alpha = 0.05$ as indicated by different letters above each graph by Duncan's multiple range test.

treated with 0, 10, 20, and 30 μ M of lycopene and incubated for 0, 24, 48, and 96 h, it was found that lycopene did not affect cell proliferation as a function of time after exposure at 0, 24, and 48 h. After 96 h, however, the lycopene suppressed SW 480 cell proliferation accordingly with its concentration ($P < 0.05$) (Fig. 1). This study tried to see the effects of lycopene in suppressing inflammation under the condition that the lycopene treatment did not affect cell proliferation, and so the time for incubation was set at 24 h. Another reason we decided to incubate SW 480 cells only for 24 h was that 24 h incubation of SW 480 cell has no effect on protein and mRNA expression due to apoptosis.

Effects of lycopene on the cytokine mRNA expression

The expression levels of mRNAs encoding the inflammatory cytokines TNF- α , IL-1 β , and IL-6 in SW480 cells were measured. The expression of cytokine mRNAs was found to increase significantly with LPS treatment and to decrease in response to lycopene treatment in a concentration-dependent manner ($P < 0.05$; Fig. 2).

Effects of lycopene on COX-2 mRNA expression and PGE₂ production

LPS treatment led to a significant increase in the expression of COX-2 mRNA, whereas treatment with lycopene significantly decreased the expression of COX-2 mRNA in a lycopene dose-dependent manner ($P < 0.05$; Fig. 3). PGE₂ production was also found to decrease significantly in response to lycopene treatment in a dose-dependent manner ($P < 0.05$).

Effects of lycopene on iNOS mRNA expression and NO production

The expression of iNOS mRNA and production of NO were increased significantly with LPS treatment but decreased significantly in a dose-dependent manner with lycopene treatment ($P < 0.05$; Fig. 4).

Effects of lycopene on the expression of inflammation-related proteins

The expression levels of NF- κ B and mitogen-activated protein kinase (MAPK) (ERK, JNK, p38) proteins, which are related to inflammation, were measured in SW480 cells. The expression of NF- κ B and I κ B were increased significantly with LPS

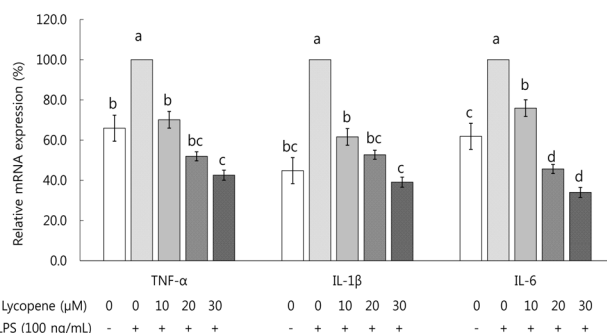


Fig. 2. Effects of lycopene on the mRNA expression of TNF- α , IL-1 β and IL-6 in LPS-stimulated SW480 cells. Total RNA was isolated and real-time PCR was performed. Each graph represents the mean \pm SE of three independent experiments. Comparison among concentration of lycopene that yielded significant differences at $\alpha = 0.05$ as indicated by different letters above each graph by Duncan's multiple range test.

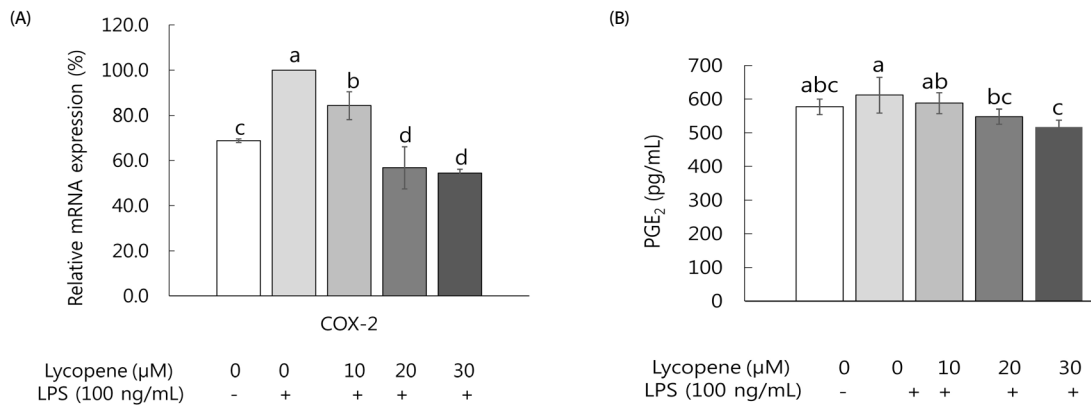


Fig. 3. Effects of lycopene on the mRNA expression of COX-2 (A) and PGE₂ concentration (B) in LPS-stimulated SW480 cells. Total RNA was isolated and real-time PCR was performed. PGE₂ concentration was measured at 405 nm by ELISA assay. Each graph represents the mean ± SE of three independent experiments. Comparison among concentration of lycopene that yielded significant differences at α=0,05 as indicated by different letters above each graph by Duncan's multiple range test.

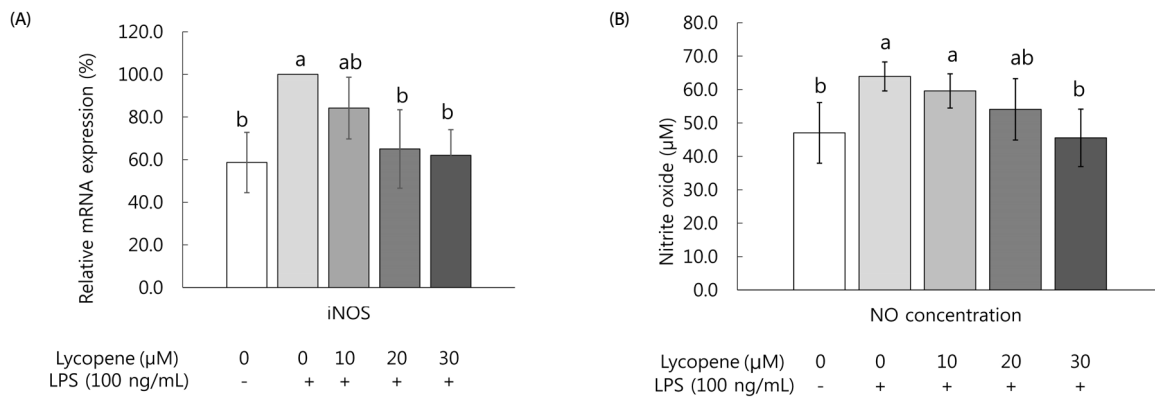


Fig. 4. Effects of lycopene on the mRNA expression of iNOS (A) and NO (B) concentration in LPS-stimulated SW480 cells. Total RNA was isolated and real-time PCR was performed. NO concentration was measured at 540 nm by Griess reaction assay. Each graph represents the mean ± SE of three independent experiments. Comparison among concentration of lycopene that yielded significant differences at α=0,05 as indicated by different letters above each graph by Duncan's multiple range test.

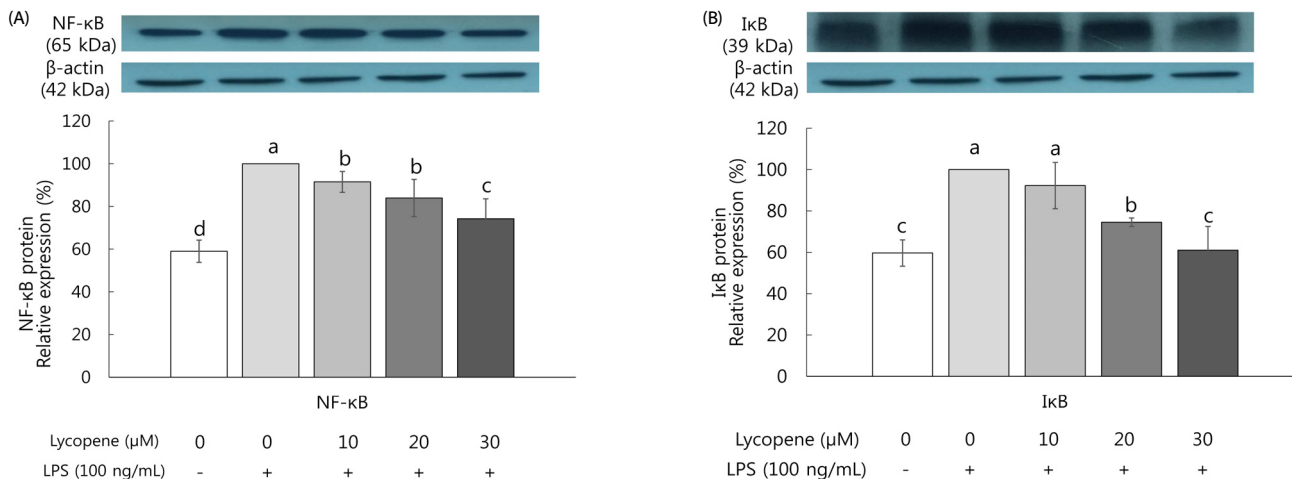


Fig. 5. Effects of lycopene on protein expression of NF-κB (A) and IκB (B) in LPS-stimulated SW480 cells. Protein expression was measured by western blot assay. Actin was used as an internal control in a densitometric analysis. Each graph represents the mean ± SE of three independent experiments. Comparison among concentration of lycopene that yielded significant differences at α=0,05 as indicated by different letters above each graph by Duncan's multiple range test.

treatment, and these levels differed significantly according to the lycopene concentration ($P < 0.05$; Fig. 5). Regarding MAPKs, the expression levels of all three proteins were increased

significantly with LPS treatment. The expression of JNK protein were decreased significantly according to the lycopene concentration ($P < 0.05$). The expression of ERK were decreased

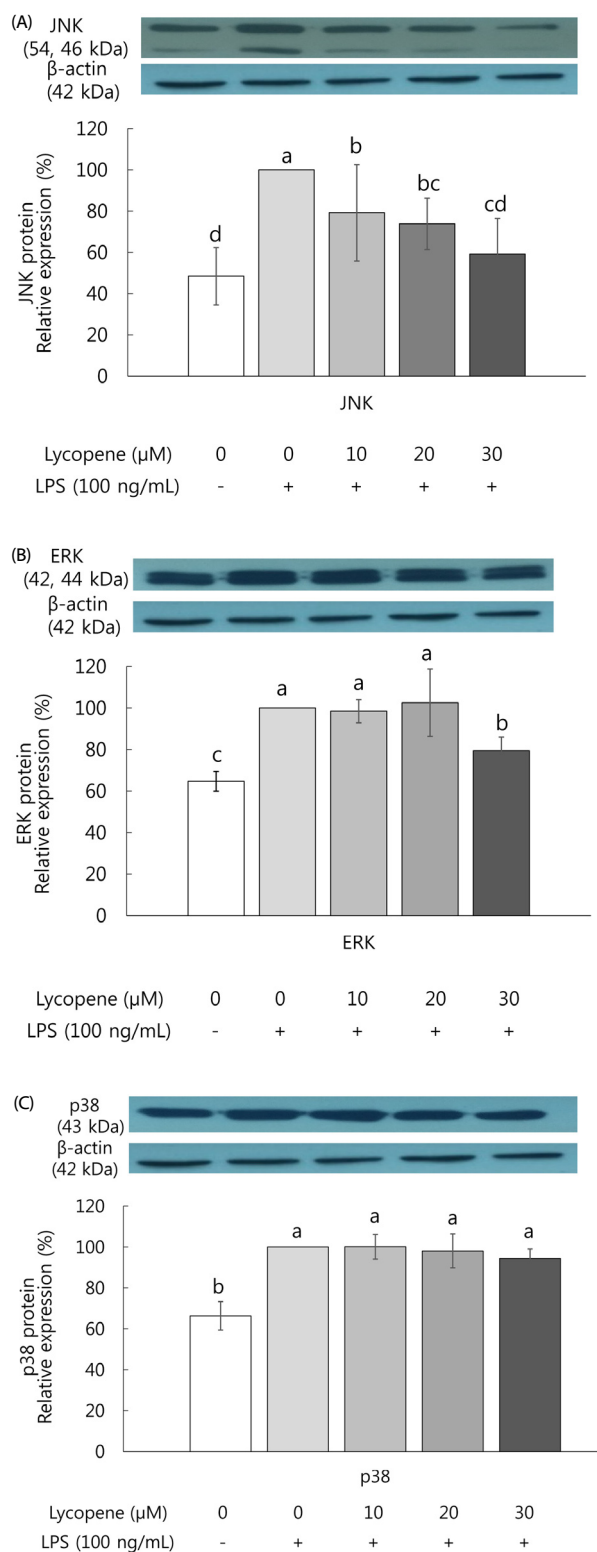


Fig. 6. Effects of lycopene on protein expression of JNK (A), ERK (B), p38 (C) in LPS-stimulated SW480 cells. Protein expression was measured by western blot assay. Actin was used as an internal control in a densitometric analysis. Each graph represents the mean \pm SE of three independent experiments. Comparison among concentration of lycopene that yielded significant differences at $\alpha = 0,05$ as indicated by different letters above each graph by Duncan's multiple range test.

significantly in response to treatment only with 30 μ M lycopene ($P < 0.05$). The expression of p38 tended to decrease in a lycopene concentration-dependent manner, but this trend was not significant (Fig. 6).

DISCUSSION

Colorectal cancer (CRC) represents a paradigm for the connection between inflammation and cancer, based on studies which indicate a causal association of CRC with genes encoding for pro-inflammatory mediators [20]. Lycopene has been reported to exert anti-inflammatory and anticancer effects and is known to prevent chronic vascular diseases and cancer [9-12]. However, the anti-inflammatory effects of lycopene in CRC cell and the related mechanisms have not been sufficiently studied.

To see the cytotoxic effect of lycopene on SW 480 cell (human CRC cell), SW 480 cells were treated with various concentrations of lycopene (0-100 μ M), concentrations used in previous lycopene and CRC cell study [21-24]. As a result of MTT assay, 100 μ M concentration of lycopene showed minimal membrane damage on SW 480 cells after 24 h of exposure compared to the culture control. At 30 μ M, lycopene showed no cell damage (99% cell viability), indicating that the any inhibition effect of lycopene up to the concentration of 30 μ M lycopene on SW 480 cell was not due to cell death. Thus in this study, SW 480 cells were treated with 0, 10, 20, and 30 μ M of lycopene, which elicited an effective anti-inflammatory activity.

In this study, the inhibitory effect of various lycopene treatment was detected at 24, 48 and 96 h of incubation. Lycopene treatment to SW 480 cells led to a significant decrease in the proliferation of SW480 cells at 96 h after treatment. Several *in vitro* studies have also been reported that lycopene inhibited cell growth in CRC cells. Lee *et al.* [21] found that 0-100 μ M of lycopene has a suppressive effect, as a dose dependent matter, on the proliferation of colorectal cancer cells through apoptosis. Huang *et al.* [22] reported that with lycopene treatment (12 μ M), the proportion of CRC cells undergoing late apoptosis or necrosis was higher than early apoptosis. Other studies also reported the antiproliferation effect of lycopene treatment (2-20 μ M) on HT-29 cells, another CRC cells [23-24]. The difference in antiproliferation effect may be accounted for by the source of lycopene used in cell culture and the amount of lycopene used in each study. In order to identify the anti-inflammatory effects of lycopene in SW 480 cell without affecting cell proliferation, the time of 24 h of lycopene treatment was used to perform dose-response experiments.

LPS is a potent inducer of inflammation, triggering an early inflammatory response that constitutes the first mechanism of defense by the host. The host response to LPS is characterized by the production of various cytokines and proinflammatory mediators [25]. The effective dosages of LPS to induce inflammation were reported in a wide range, from 10 ng to 1 mg/mL [26-29]. In order to see the anti-inflammatory effect of lycopene on colon cancer cell, SW 480 cells were treated with lycopene for 24 h and then cells were again treated with LPS for 18 h to induce inflammation. As a result of MTT assay, it was found the both LPS (100 ng/mL) and lycopene treatment (0-30 μ M) did not affect cell proliferation, and so this condition

was used for the remainder of the experiment. In response to LPS treatment to SW 480 cells, the mRNA expression levels of TNF- α , IL-1 β , and IL-6 were increased significantly but decreased significantly in response to lycopene in a dose-dependent manner. Lycopene was also significantly effective in inhibiting mRNA expressions of COX-2 and iNOS with subsequent inhibition of PGE₂ and NO production, which confirming the anti-inflammatory effects of this molecule in colon cancer cells.

COX-2, the expression of which is induced by inflammatory stimuli, biosynthesizes PGE₂ from arachidonic acid, thus inducing inflammation and atropy. In response to an inflammatory stimulus, iNOS produces NO, a harmful compound in the body that increases vascular permeability, causes edema and septic shock consequent to excessive vasodilatation, inhibits wound healing, and intensifies inflammation in damaged nerve tissues, cytotoxicity, and other types of tissue damage [30].

Although no previous study of anti-inflammatory effects of lycopene on CRC cell exist, lycopene reduced several proinflammatory mediators, such as IL-1 β , TNF- α , or proinflammatory enzyme activities, such as COX-2 in a variety of cell lines, including blood mononuclear cells (PBMC) from human subjects [27], human macrophages [28], and mouse macrophage [29]. Several *In vivo* and human studies have also suggested promising anti-inflammatory effects of lycopene in the development of colon cancer [13,20,31-34]. Lycopene was found to have anti-inflammatory effects in a rat model of induced-colitis [31]. In that study, a more attenuated inflammatory reaction in terms of microscopic changes and decreased myeloperoxidase (MPO) activity, as a marker of inflammation, were observed in the group fed a diet supplemented with lycopene (300 μ g/rat/day) while no significant effect was noted in the beta-carotene-supplemented group. In human studies, lycopene consumption interacted with MAPK-signaling genes to alter risk of colorectal cancer [32]. Giovannucci *et al.* [13] reported that the intake level of tomato or lycopene was negatively correlated with the incidence of colorectal cancer. Those above findings support our *in vitro* study reporting that lycopene treatment may help relieve inflammation in CRC. This study showed that LPS treatment induces the activation of NF- κ B, as confirmed by I κ B phosphorylation and lycopene inhibited expression of NF- κ B as a dose dependent manner. Inactivation of NF- κ B by lycopene was strongly linked the decreased expression of the pro-inflammatory cytokines, such as TNF- α , IL-1 β , and IL-6, and decreased expression of inflammatory releasing enzymes, COX-2 and iNOS with subsequent inhibition of PGE₂ and NO production.

Several studies have also been reported that lycopene modulates NF- κ B activation, showing anti-inflammatory properties related to the inhibition of the NF- κ B signaling cascade [26-29]. Lycopene has been suggested to induce NF- κ B inactivation by inhibiting the phosphorylation of i kappa B kinase alpha (IKK α) and i kappa B alpha (IKB α) and by decreasing the translocation of the NF- κ Bp65 subunit from the cytosol to the nucleus [28]. NF- κ B is activated constitutively in many tumors/tumor cells, including human CRC cells [3,8,19]. This is one of the major reasons why the chemotherapeutic agents are ineffective in inducing apoptosis in cancer cells including CRC [8,15]. Constitutively active NF- κ B provides growth and survival signals in

human malignancies, suggesting that the agents that inhibit NF- κ B activation could be effective in CRC prevention and therapy [8,11].

We investigated whether the inhibitory effect of lycopene on LPS -induced NF- κ B activation pathway extends to MAPK signaling pathway. Among MAP kinases, only the expression of JNK protein decreased significantly according to the lycopene concentration. The three major groups of distinctly regulated MAPK cascades are characterized by ERK1/2, JNK, and p38 MAP kinase [35]. The MAP kinases (ERK1/2, p38 and JNK) has been reported to activate NF- κ B signaling and the consequent expression of pro-inflammatory cytokines [36-37]. JNK pathway, also known as stress-activated protein kinase 1 (SAPK1), is activated by pro-inflammatory cytokines and oxidative stress. JNK have been shown to be modulated by obesity and insulin resistance. A study by Hardwick and colleagues observed that both p38 and JNK were highly expressed in colonic adenomatous polyps [38]. However, no *in vitro* study regarding lycopene and MAPK signaling pathway in CRC cell exist. Only one gene study showed that dietary factors involved in inflammation and oxidative stress interact with MAPK-signaling genes to alter risk of CRC and MAPK-signaling pathway interacted with lycopene consumption [32].

In conclusion, This study found that lycopene inhibits the protein expression of NF- κ B and JNK in SW480 colorectal cancer cells, thus leading to (1) reduced production of TNF- α , IL-1, and IL-6 and (2) inhibited expression of COX-2 and iNOS mRNA with subsequent inhibition of PGE₂ and NO production. These findings represent a direct evidence that lycopene may act as an anti-inflammatory compound in cells exposed to LPS and provide novel data on important molecular mechanisms by which lycopene regulates LPS-driven NF- κ B-dependent inflammation in human CRC cells. Further *in vivo* and *in vitro* study regarding the role of lycopene in modulation of the immune system and dietary supplementation of lycopene for reducing inflammation in CRC are needed to verify our *in vitro* findings.

CONFLICT OF INTEREST

The authors declare no potential conflicts of interests.

REFERENCES

1. Korean Statistical Information Service. Cause of death [Internet]. Daejeon: Statistics Korea; c2014 [cited 2016 August 29]. Available from: http://kosis.kr/statHtml/statHtml.do?orgId=101&tblId=DT_1B34E01&conn_path=I2.
2. Korean Statistical Information Service. Cancer registration statistics [Internet]. Daejeon: Statistics Korea; c2013 [cited 2016 August 29]. Available from: http://kosis.kr/statHtml/statHtml.do?orgId=117&tblId=DT_117N_A00022&conn_path=I2.
3. Kim DH. Risk factors of colorectal cancer. *J Korean Soc Coloproctol* 2009;25:356-62.
4. Coussens LM, Werb Z. Inflammation and cancer. *Nature* 2002; 420:860-7.
5. Tuan J, Chen YX. Dietary and lifestyle factors associated with colorectal cancer risk and interactions with microbiota: fiber, red or processed meat and alcoholic drinks. *Gastrointest Tumors*

- 2016;3:17-24.
6. Cho YA, Lee J, Oh JH, Shin A, Kim J. Dietary inflammatory index and risk of colorectal cancer: a case-control study in Korea. *Nutrients* 2016;8:E469.
 7. Youn SW. Systemic inflammatory response as a prognostic factor in patients with cancer. *J Korean Orient Oncol* 2012;17:1-7.
 8. Danese S, Mantovani A. Inflammatory bowel disease and intestinal cancer: a paradigm of the Yin-Yang interplay between inflammation and cancer. *Oncogene* 2010;29:3313-23.
 9. Holzapfel NP, Holzapfel BM, Champ S, Feldthusen J, Clements J, Hutmacher DW. The potential role of lycopene for the prevention and therapy of prostate cancer: from molecular mechanisms to clinical evidence. *Int J Mol Sci* 2013;14:14620-46.
 10. Koh MS, Hwang JS, Moon AR. Lycopene inhibits proliferation, invasion and migration of human breast cancer cells. *Biomol Ther* 2010;18:92-8.
 11. Giovannucci E. Tomatoes, tomato-based products, lycopene, and cancer: review of the epidemiologic literature. *J Natl Cancer Inst* 1999;91:317-31.
 12. Michaud DS, Feskanich D, Rimm EB, Colditz GA, Speizer FE, Willett WC, Giovannucci E. Intake of specific carotenoids and risk of lung cancer in 2 prospective US cohorts. *Am J Clin Nutr* 2000;72:990-7.
 13. Giovannucci E, Ascherio A, Rimm EB, Stampfer MJ, Colditz GA, Willett WC. Intake of carotenoids and retinol in relation to risk of prostate cancer. *J Natl Cancer Inst* 1995;87:1767-76.
 14. Seo EY, Lee HS, Kim WK. Effect of [6]-gingerol on inhibition of cell proliferation in MDA-MB-231 human breast cancer cells. *Korean J Nutr* 2005;38:656-62.
 15. Lin D, Ma J, Xue Y, Wang Z. Penehyclidine hydrochloride preconditioning provides cardioprotection in a rat model of myocardial ischemia/reperfusion injury. *PLoS One* 2015;10:e0138051.
 16. Livak KJ, Schmittgen TD. Analysis of relative gene expression data using real-time quantitative PCR and the 2(-Delta Delta C(T)) method. *Methods* 2001;25:402-8.
 17. Son CH, Lee SH, Park CH, Park JT, Park SG, Lee JA, Suh GH, Oh KS. Confirmation of male specific fetal free RNA in maternal plasma and comparison of accuracy on the sex determination using real-time pcr method in Korean native cattle. *Korean J Embryo Transf* 2013;28:343-8.
 18. McCarthy MK, Procaro MC, Wilke CA, Moore BB, Weinberg JB. Prostaglandin E2 production and T cell function in mouse adenovirus type 1 infection following allogeneic bone marrow transplantation. *PLoS One* 2015;10:e0139235.
 19. Kang HJ, Hong SH, Kang KH, Park C, Choi YH. Anti-inflammatory effects of Hwang-Heuk-San, a traditional Korean herbal formulation, on lipopolysaccharide-stimulated murine macrophages. *BMC Complement Altern Med* 2015;15:447.
 20. Slattey ML, Lundgreen A, Wolff RK. Dietary influence on MAPK-signaling pathways and risk of colon and rectal cancer. *Nutr Cancer* 2013;65:729-38.
 21. Lee HS, Jung JI, Kang YH, Khachik F, Yoon JH. Effect of lycopene on the insulin-like growth factor-I receptor signaling pathway in human colon cancer HT-29 cells. *J Korean Soc Food Sci Nutr* 2003;32:437-43.
 22. Huang RF, Wei YJ, Inbaraj BS, Chen BH. Inhibition of colon cancer cell growth by nanoemulsion carrying gold nanoparticles and lycopene. *Int J Nanomedicine* 2015;10:2823-46.
 23. Tang FY, Shih CJ, Cheng LH, Ho HJ, Chen HJ. Lycopene inhibits growth of human colon cancer cells via suppression of the Akt signaling pathway. *Mol Nutr Food Res* 2008;52:646-54.
 24. Lin MC, Wang FY, Kuo YH, Tang FY. Cancer chemopreventive effects of lycopene: suppression of MMP-7 expression and cell invasion in human colon cancer cells. *J Agric Food Chem* 2011;59:11304-18.
 25. Triantafilou M, Triantafilou K. The dynamics of LPS recognition: complex orchestration of multiple receptors. *J Endotoxin Res* 2005;11:5-11.
 26. Hung CF, Huang TF, Chen BH, Shieh JM, Wu PH, Wu WB. Lycopene inhibits TNF-alpha-induced endothelial ICAM-1 expression and monocyte-endothelial adhesion. *Eur J Pharmacol* 2008;586:275-82.
 27. Bessler H, Salman H, Bergman M, Alcalay Y, Djaldetti M. In vitro effect of lycopene on cytokine production by human peripheral blood mononuclear cells. *Immunol Invest* 2008;37:183-90.
 28. Feng D, Ling WH, Duan RD. Lycopene suppresses LPS-induced NO and IL-6 production by inhibiting the activation of ERK, p38MAPK, and NF- κ B in macrophages. *Inflamm Res* 2010;59:115-21.
 29. Rafi MM, Yadav PN, Reyes M. Lycopene inhibits LPS-induced proinflammatory mediator inducible nitric oxide synthase in mouse macrophage cells. *J Food Sci* 2007;72:S069-074.
 30. Bonizzi G, Karin M. The two NF- κ B activation pathways and their role in innate and adaptive immunity. *Trends Immunol* 2004;25:280-8.
 31. Reifen R, Nur T, Matas Z, Halpern Z. Lycopene supplementation attenuates the inflammatory status of colitis in a rat model. *Int J Vitam Nutr Res* 2001;71:347-51.
 32. Riso P, Visioli F, Grande S, Guarnieri S, Gardana C, Simonetti P, Porrini M. Effect of a tomato-based drink on markers of inflammation, immunomodulation, and oxidative stress. *J Agric Food Chem* 2006;54:2563-6.
 33. Vrieling A, Voskuil DW, Bonfrer JM, Korse CM, van Doorn J, Cats A, Depla AC, Timmer R, Witteman BJ, van Leeuwen FE, Van't Veer LJ, Rookus MA, Kampman E. Lycopene supplementation elevates circulating insulin-like growth factor binding protein-1 and -2 concentrations in persons at greater risk of colorectal cancer. *Am J Clin Nutr* 2007;86:1456-62.
 34. Levy J, Bosin E, Feldman B, Giat Y, Mlinster A, Danilenko M, Sharoni Y. Lycopene is a more potent inhibitor of human cancer cell proliferation than either alpha-carotene or beta-carotene. *Nutr Cancer* 1995;24:257-66.
 35. Zhang N, Ahsan MH, Zhu L, Sambucetti LC, Purchio AF, West DB. NF-kappaB and not the MAPK signaling pathway regulates GADD45beta expression during acute inflammation. *J Biol Chem* 2005;280:21400-8.
 36. Palozza P, Parrone N, Catalano A, Simone R. Tomato lycopene and inflammatory cascade: basic interactions and clinical implications. *Curr Med Chem* 2010;17:2547-63.
 37. Kim GY, Kim JH, Ahn SC, Lee HJ, Moon DO, Lee CM, Park YM. Lycopene suppresses the lipopolysaccharide-induced phenotypic and functional maturation of murine dendritic cells through inhibition of mitogen-activated protein kinases and nuclear factor-kappaB. *Immunology* 2004;113:203-11.
 38. Hardwick JC, van den Brink GR, Offerhaus GJ, van Deventer SJ, Peppelenbosch MP. NF-kappaB, p38 MAPK and JNK are highly expressed and active in the stroma of human colonic adenomatous polyps. *Oncogene* 2001;20:819-27.