

Verteporfin suppresses cell survival, angiogenesis and vasculogenic mimicry of pancreatic ductal adenocarcinoma via disrupting the YAP-TEAD complex

Honglong Wei,¹ Fuhai Wang,¹ Yong Wang,¹ Tao Li,¹ Peng Xiu,¹ Jingtao Zhong,¹ Xueying Sun² and Jie Li¹

¹Department of General Surgery, Qianfoshan Hospital, Shandong University, Jinan, China; ²Department of Molecular Medicine and Pathology, Faculty of Medical and Health Sciences, University of Auckland, Auckland, New Zealand

Key words

Angiogenesis, apoptosis, pancreatic cancer, vasculogenic mimicry, verteporfin

Correspondence

Jie Li, Department of General Surgery, Qianfoshan Hospital, Shandong University, 16766 Jingshi Road, Jinan 250014, China.
Tel/Fax: +86-531-8926-9815; E-mail: lijieqfs@126.com

Funding Information

National Major Research and Development Program of China (2016YFC0106004), Shandong Provincial Science and Technology Development Planning, China (2015GSF121040) and Shandong Provincial Natural Science Foundation, China (ZR2012HL05 and ZR2015HL080).

Received August 18, 2016; Revised December 7, 2016; Accepted December 17, 2016

Cancer Sci 108 (2017) 478–487

doi: 10.1111/cas.13138

Pancreatic ductal adenocarcinoma (PDAC) is one of the most aggressive human malignancies, and the overall 5-year survival rate of is <5%.⁽¹⁾ The incidence rate of PDAC is annually increasing because of the obesity, high-fat diets, diabetes, smoking, alcoholic dependence, and chronic pancreatitis.⁽²⁾ The standard chemotherapeutic regimen for advanced PDAC only prolongs the survival for 3 months.^(3,4) Therefore, it is urgently required to seek novel therapeutic strategies.

The Yes-associated protein 1 (YAP) is the most critical downstream effector in the Hippo signaling cascade, and plays an essential role in physiological and pathological process.⁽⁵⁾ YAP serves as a transcriptional co-activator and regulates the activity of various transcription factors, such as TEADs and CTGF, which are implicated in cell proliferation, apoptosis, chemoresistance and angiogenesis.⁽⁶⁾ YAP is highly expressed in several types of malignant tumors including pancreatic cancer,^(7–9) and is shown to participate in the development, progression and recurrence of PDAC.^(10,11) Hyperactivated YAP could enhance the secretion of microfibrillar associated protein 5 (MFAP5) to promote neoangiogenesis *in vitro* and

Pancreatic ductal adenocarcinoma (PDAC) is one of the most aggressive human malignancies. The Yes-associated protein-1 (YAP) plays a critical role in cell proliferation, apoptosis and angiogenesis. Verteporfin is a photosensitizer used in photodynamic therapy and also a small molecular inhibitor of the Hippo-YAP pathway. However, little is known about whether verteporfin could inhibit YAP activity in PDAC cells. Our present results showed that verteporfin suppressed the proliferation of human PDAC PANC-1 and SW1990 cells by arresting cells at the G1 phase, and inducing apoptosis in dose- and time-dependent manners. Verteporfin also inhibited the tumor growth on the PDAC xenograft model. Treatment with verteporfin led to downregulation of cyclinD1 and cyclinE1, modulation of Bcl-2 family proteins and activation of PARP. In addition, verteporfin exhibited an inhibitory effect on angiogenesis and vasculogenic mimicry via suppressing Ang2, MMP2, VE-cadherin, and α -SMA expression *in vitro* and *in vivo*. Mechanism studies demonstrated that verteporfin impaired YAP and TEAD interaction to suppress the expression of targeted genes. Our results provide a foundation for repurposing verteporfin as a promising anti-tumor drug in the treatment of pancreatic cancer by targeting the Hippo pathway.

in vivo.⁽¹²⁾ Therefore, YAP may be a potential target for cancer therapies.

As one of the hallmarks of cancer, angiogenesis is characterized by the formation of new and irregular blood vessels to supply nutrients and oxygen in tumors.⁽¹³⁾ Tumor cells secrete pro-angiogenic factors to facilitate tumor growth and metastasis. Consequently, angiogenesis inhibition has become an important therapeutic strategy to prevent tumor progression and metastasis. Vasculogenic mimicry (VM), another form of tumor vascularization, has drawn an attention, since it is independent of angiogenesis and formed by highly invasive and genetically dysregulated cancer cells.^(14,15) VM is detected in various solid tumors including pancreatic cancer.^(16–18) Tumors with high VM abilities are often highly aggressive and associated with poor prognosis.⁽¹⁹⁾ Pancreatic cancer is one of the most vascularized and angiogenic solid tumors.⁽²⁰⁾ Therefore, inhibition of angiogenesis and VM could suppress the progression of pancreatic cancer.

Verteporfin is a photosensitizer clinically used for photodynamic therapy to treat neovascularization caused by age-related macular degeneration.⁽²¹⁾ Recently, studies have shown that verteporfin could inhibit YAP activation by disrupting YAP-

TEAD interactions and preventing YAP induced oncogenic growth.⁽²²⁾ Verteporfin was shown to inhibit angiogenesis and the growth and migration of human retinoblastoma cells via disrupting the YAP-TEAD-associated downstream proto-oncogenes.⁽²³⁾ Furthermore, verteporfin effectively inhibited the expression of YAP and endothelial growth factor receptor (EGFR) and enhanced the effects of cytotoxic drugs in killing cells from esophageal cancer⁽²⁴⁾ and lung cancer.⁽²⁵⁾ The results from a phase I/II study of verteporfin photodynamic therapy in locally advanced pancreatic cancer indicated that verteporfin was feasible and safe, and might represent a useful supplement for the treatment of pancreatic cancer.⁽²⁶⁾

In this study, we have shown that verteporfin inhibited the proliferation of PDAC cells by arresting cells at G1 phase via reducing the expression of cyclinD1 and cyclinE1, and inducing apoptosis by activating the intrinsic apoptotic signaling pathway. Verteporfin also inhibited tumor angiogenesis by downregulating angiopoietin-2 (Ang2) through inhibiting YAP activity, and suppressed VM by downregulating MMP2, VE-cadherin

and α -SMA expression. The above mechanism studies on YAP regulation by verteporfin provide insights into potential approaches with verteporfin in PDAC therapy.

Materials and Methods

Cell culture. Human umbilical vein endothelial cells (HUVECs) and human pancreatic ductal cells (HPDE6) were purchased from Fuheng biology (Shanghai, China). Human PDAC PANC-1 and SW1990 cells were obtained from CTCC (Shanghai, China). Cells were cultured in Dulbecco's modified Eagle's medium (Hyclone, Logan, Utah, USA) containing 10% fetal bovine serum (Gibco, Carlsbad, CA, USA) in a humidified incubator containing 5% CO₂ at 37°C.

Transmission electron microscopy. Conventional electron microscopy was used to visualize PANC-1 and SW1990 cells morphology at the ultrastructural level. The cells after verteporfin treated were fixed with 2.5% glutaraldehyde, and post-fixed in 1% phosphate-buffered osmium tetroxide. After

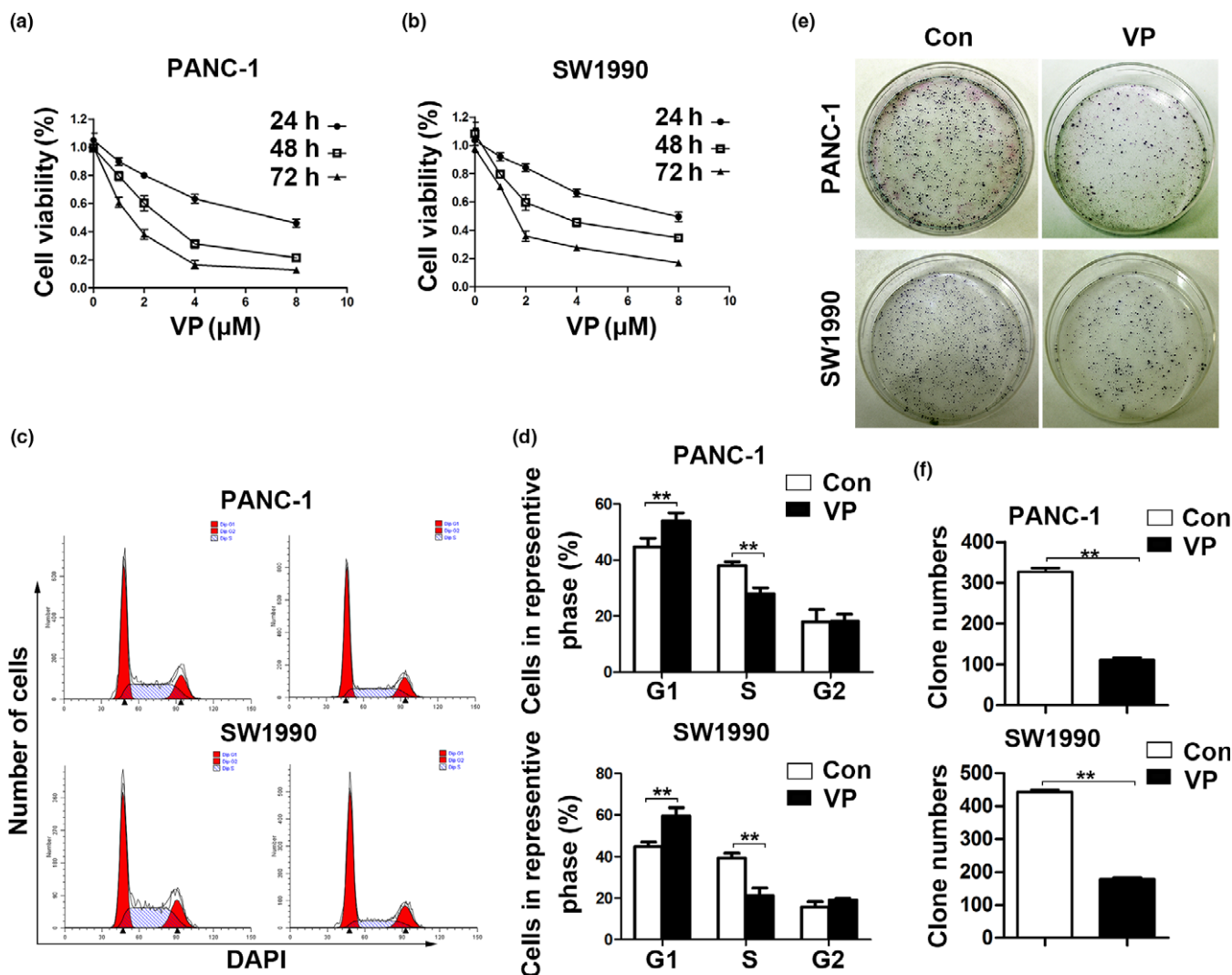


Fig. 1. Verteporfin inhibits cell proliferation and cell cycle progression *in vitro*. (a, b) PANC-1 and SW1990 cells were incubated with vehicle or verteporfin at various concentrations for 24, 48, and 72 h. Cell viability was assessed (%). (c) Proportion of PANC-1 and SW1990 cells at different phases of cell cycle was measured by flow cytometry. (d) Representative histograms depicting cell cycle profiles of PANC-1 and SW1990 cells were shown. (e, f) Representative colonies formed by PANC-1 or SW1990 cells treated with vehicle or verteporfin were shown in the left panel, and the quantified results in the right panel. The experiments were performed in triplicate. Data were presented as mean \pm SD. * $P < 0.05$; ** $P < 0.01$; *** $P < 0.001$.

being embedded, sectioned, and double-stained with uranyl acetate and lead citrate, images were captured with a transmission electron microscope (JEM-1200EX, JEOL Ltd, Tokyo, Japan).

Flow cytometry for cell cycle and apoptosis assay. For cell cycle assay, 1×10^6 cells were harvested, washed, and fixed with ice-cold 70% ethanol overnight at 4°C. After washing again, cells were incubated with DAPI and RNaseA for 30 min at room temperature, and then analyzed cytometrically. For cell apoptosis assay, cells were harvested and incubated with 1 μ L of Zombie violet stain and 5 μ L of FITC-conjugated Annexin V for 30 min (Biolegend, San Diego, CA, USA), and then analyzed cytometrically. Three independent repeated experiments were performed.

Gene expression vectors and transfection. Full-length human YAP ectopic expression lentivirus vector and the negative control (GeneChem, Shanghai, China) were transfected into HUVECs according to the manufacturer's instruction. YAP shRNA (5'-CCCAGTTAAATGTTCCACCAAT-3') and scrambled control shRNA (GenePharma, Shanghai, China) were transfected into HUVECs with the PolyJet DNA *in vitro* transfection reagent (SignaGen, Ijamsville, MD, USA).

Transwell assay. The assay was performed as previously described.⁽²⁷⁾ Briefly, cells were added to the upper compartment of the chamber. After incubation for 24 h, cells in the lower compartment were fixed with methanol, and stained with 0.1% crystal violet. The number of migrated cells in five randomly selected fields (magnification, 100 \times) was counted under

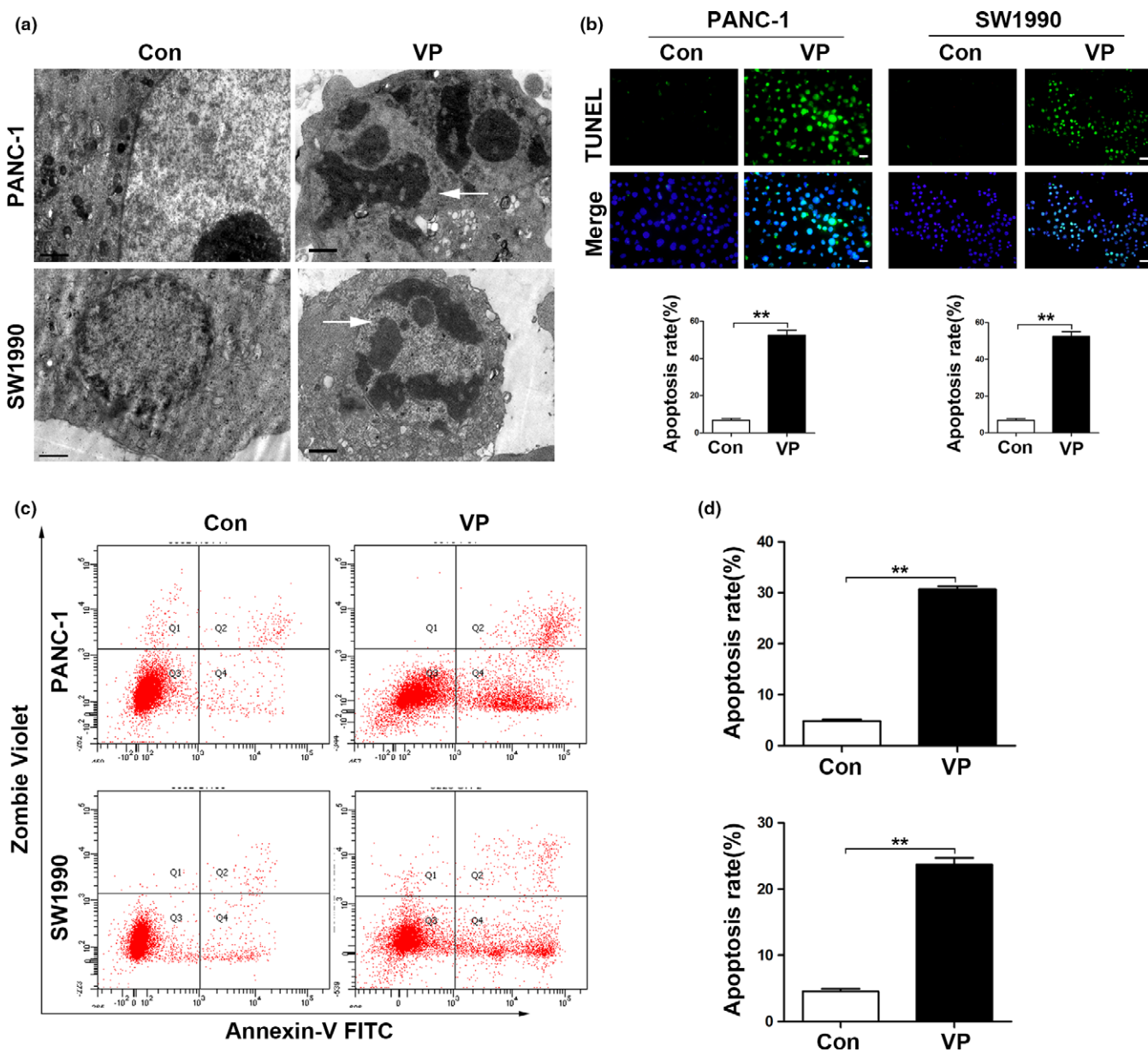


Fig. 2. Verteporfin induces cell apoptosis in pancreatic cancer cells. (a) Ultrastructure of PDAC cells treated with vehicle control or verteporfin (Magnification $\times 10\,000$, bar = 1 μ M) was examined by electron microscopy. (b) PDAC cells were incubated with vehicle control or verteporfin and then stained by TUNEL (Magnification $\times 200$, bar = 50 μ M). TUNEL positive cells were quantified. (c) Representative dot plots were from cytometrically analyzed apoptotic cells. (d) Percentages of apoptotic cells (%) were quantified. The experiments were performed in triplicate. Data were presented as mean \pm SD. * $P < 0.05$; ** $P < 0.01$; *** $P < 0.001$.

microscopy. The experiments were repeated at least in triplicate.

In vitro tube formation assay. The assay was performed as previously described.⁽²⁷⁾ Briefly, 24-well culture plates were coated with 200 μ L of Matrigel matrix (Corning, Bedford, MA, USA). Cells (2.5×10^3 /well) were seeded in plates. Twenty-four hours after treatments, images were captured with an Olympus microscope. The number of tubular structures in five randomly chosen fields (magnification, 40 \times) was quantified with the Image-Pro Plus 6.0 software (Media Cybernetics, Rockville, MD, USA).

Chicken chorioallantoic membrane (CAM) assay. Chorioallantoic membrane assay was performed as described previously.⁽²⁸⁾ Groups of 10 fertilized chicken eggs were incubated at 37.8°C and 60–70% relative humidity for 8 days. A small hole was then drilled on the broad end of each egg and a window was carefully created on the eggshell. The chorioallantoic membranes were treated with either vehicle or verteporfin. The windows were then sealed with cellophane tape. After incubation for further 48 h, the CAMs were photographed. Angiogenesis was quantified by counting the number of branching blood vessels.

Animal experiments. The animal experiments were approved by the Animal Care and Use Committee of Shandong University. Six-week-old male BALB/c nude (nu/nu) mice were purchased from Beijing HFK Bioscience (Beijing, China). The experimental protocol has been described previously.^(29,30) Briefly, the PANC-1 or SW1990 cells (10^7 cells in 100 μ L PBS) were subcutaneously inoculated into the right axilla of mice after a week of acclimatization. Tumor growth was measured daily with calipers. The tumor volume was calculated as $a^2 \times b \times \pi/6$, where b is the length in millimeters and a is the width in millimeters. When tumors reached a mean volume of 70–150 mm³, the animals were randomized to two groups. The mice in the verteporfin group were intraperitoneally injected with verteporfin (100 mg/kg body weight) every 2 days for 3 weeks. The control mice received the intraperitoneal injection with an equal volume of PBS. The tumors were harvested at the end of the experiments.

Statistical analysis. The data were expressed as the mean \pm standard deviation. Comparisons were made with one-way ANOVA followed by Dunnett's *t*-test. The GraphPad Prism 5 software (La Jolla, CA, USA) was used to evaluate statistical significance. A value of $P < 0.05$ was considered to indicate a statistically significant difference.

Antibody and reagents, Cell viability assay, Colony formation assay, TUNEL assay, Quantitative real-time PCR, Western blot, immunohistochemistry and periodic acid-schiff staining. Please see details in Supplemental additional materials and methods.

Results

Verteporfin inhibits cell proliferation and cell cycle progression. Incubation of verteporfin reduced the viability of PANC-1 and SW1990 cells in dose- and time-dependent manners. The IC₅₀ of verteporfin was 6.8, 2.6, and 1.4 μ M in PANC-1 cells after incubation for 24, 48 and 72 h, respectively (Fig. 1a). Similarly, the IC₅₀ in SW1990 cells was 7.7, 3.6 and 1.7 μ M after incubation for 24, 48, and 72 h, respectively (Fig. 1b). Flow cytometry assays revealed that verteporfin increased the percentage of cells in G1 phase and decreased the percentage of cells in S phase (Fig. 1c,d). Additionally, the number of colonies formed

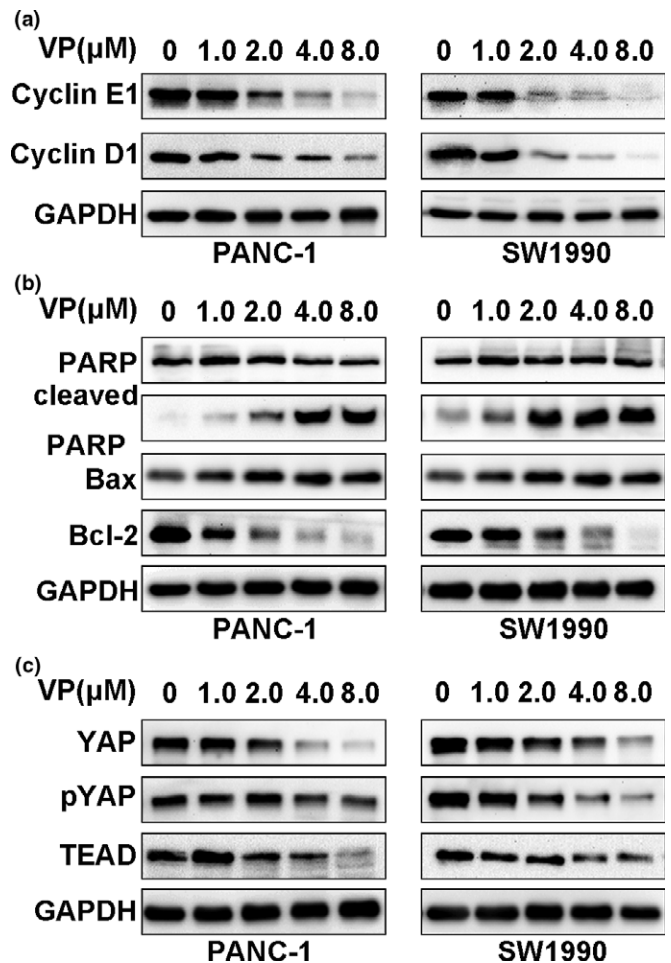


Fig. 3. Verteporfin inhibits cell cycle progression and induces apoptosis via disrupting YAP-TEAD interaction. PDAC cells were treated with verteporfin at various concentrations for 24 h, and then subjected to Western blotting for detecting the expression of cyclinD1 and cyclinE1 (a), the expression of PARP, cleaved PARP, Bax and Bcl-2 (b), and the expression of proteins in the Hippo pathway, YAP, pYAP and TEAD (c).

by verteporfin-pretreated PDAC cells was significantly less than those by control cells (Fig. 1d,e).

Verteporfin induces cell apoptosis. Under electron microscopy, control cells displayed regular oval shape with prominent nucleus, distinct nucleolus and maintained the integrity of cellular membranes; while verteporfin-treated cells featured significant cytoplasmic vacuolization, large vacuoles, autophagosome, and swollen mitochondria (Fig. 2a). Verteporfin significantly induced apoptosis in PANC-1 and SW1990 cells as detected by TUNEL assay (Fig. 2b). Annexin V-FITC/Zombie violet apoptosis assay showed that the apoptosis rates of PANC-1 and SW1990 cells treated with verteporfin were approximately 30% and 24%, respectively (Fig. 2c,d). Similarly, verteporfin also inhibited the viability and induced the apoptosis of HPDE6 and HUVECs in relatively more doses (Fig. S1).

Verteporfin regulates the expression of proteins involved in cell cycle progression and apoptosis via disrupting YAP-TEAD interaction. Mizuno *et al.* found that YAP1 knockdown led to an accumulation of cells in G0 and G1 phase as well as a significant loss of S phase cells in mesothelioma cell lines. Mechanism studies demonstrated that YAP directly regulated the

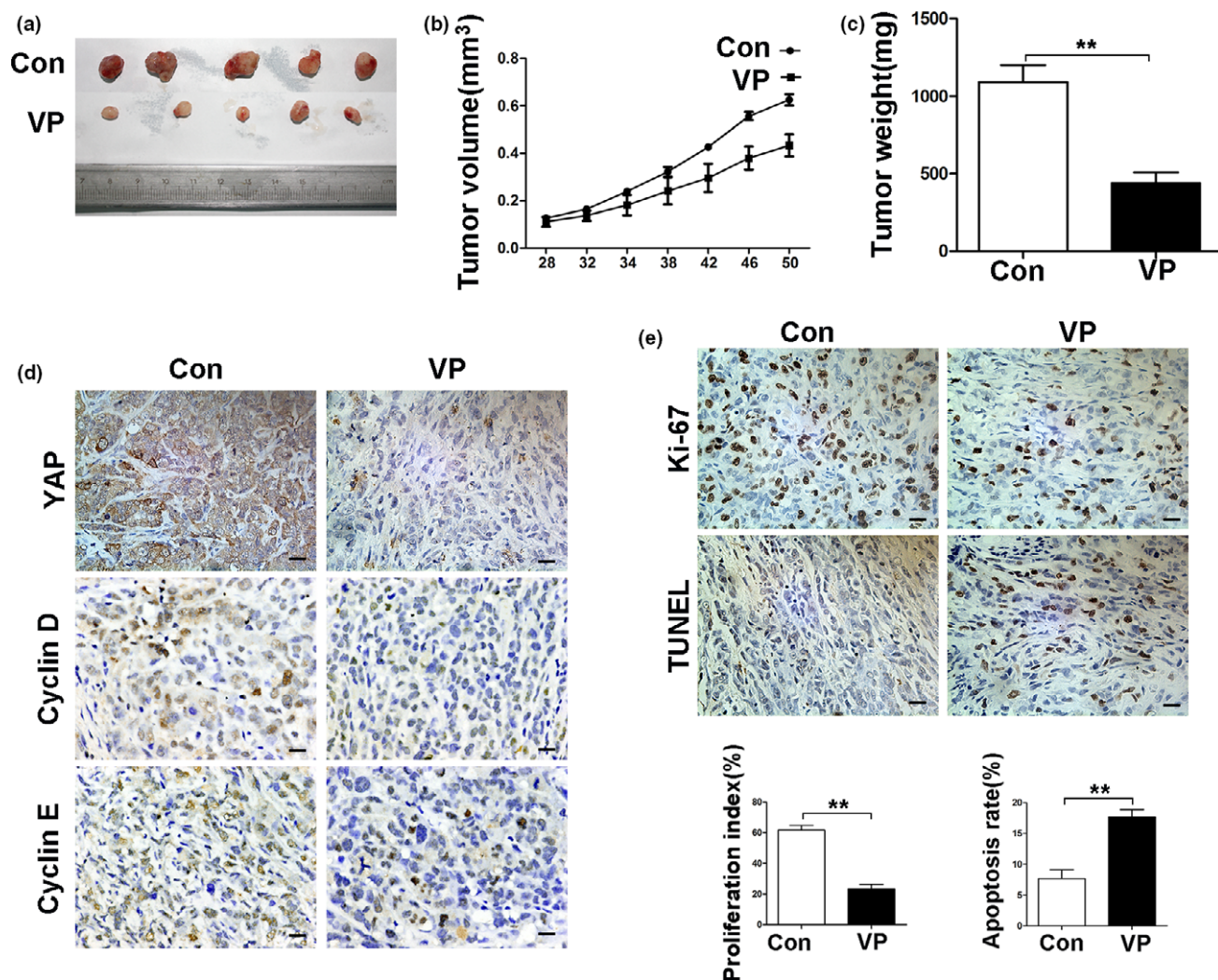


Fig. 4. Verteporfin suppresses tumor growth in the PDAC xenograft model. The treatment schedule was shown in Materials and Methods. (a) Tumors were measured and tumor volume calculated at indicated time points. At the end of the experiment, tumors were excised and photographed (b), and weighed (c). (d) Tumoral expression of YAP, cyclinD1 and cyclinE1 was detected by IHC. (e) Tumor sections were stained with an anti-Ki67 antibody and TUNEL (Magnification $\times 400$, bar = 25 μm). Proliferation and apoptosis indexes were quantified. Data were presented as mean \pm SD. * $P < 0.05$; ** $P < 0.01$; *** $P < 0.001$.

expressions of cyclinD1 and foxhead box m1 (FOXM1).⁽³¹⁾ Here, verteporfin inhibited the expression of cyclinD1 and cyclinE1 in a dose-dependent manner (Fig. 3a). Verteporfin also increased the expression of Bax, decreased the expression of Bcl-2, and activated PARP (Fig. 3b). Verteporfin also suppressed necrosis-associated protein expression in PDAC cells (Fig. S2). It has been shown that verteporfin abrogated the interaction of YAP and TEAD.⁽²²⁾ As expected, verteporfin inhibited the expression of total YAP, phosphoYAP and TEAD in a dose-dependent manner (Fig. 3c). The results indicate that verteporfin may induce cell G1 phase arrest and apoptosis via disrupting the YAP-TEAD interaction.

Verteporfin suppresses tumor growth in PDAC xenograft model. In subsequent study, we further observed the effect of verteporfin on the PDAC xenograft model. Tumors from verteporfin-treated mice were significantly smaller than those from vehicle-treated controls (Fig. 4a,b). The weights of tumors harvested from mice at the end of experiments showed a similar trend to the volume of tumors (Fig. 4c). Immunohistochemical analysis of tumor sections showed that verteporfin decreased

the expression of YAP, cyclinD1 and cyclinE1 (Fig. 4d). Fewer Ki-67 positive-cells were observed in tumors treated with verteporfin compared with control tumors. TUNEL assay showed increased apoptosis in verteporfin-treated tumors (Fig. 4e).

YAP transcriptionally regulates Ang2 expression to enhance angiogenesis. Ang2 is the critical marker for vasculogenic events, and we have reported that Ang2 contributed to neo-angiogenesis.⁽²⁷⁾ In addition, YAP plays an important role in angiogenic sprouting and remodeling of HUVECs, and the expression of Ang2 correlates to YAP expression.⁽³²⁾ Here, we showed that depletion of YAP inhibited, while overexpression of YAP increased, Ang2 expression (Fig. 5a,b). Accordingly, depletion of YAP inhibited, while overexpression of YAP promoted, the migration of HUVECs (Fig. 5c,d). Depletion of YAP impaired, while overexpression of YAP, promote the capillary tube formation ability of HUVECs (Fig. 5e,f).

Verteporfin inhibits angiogenesis by downregulating Ang2 expression. Western blot analysis showed that verteporfin suppressed Ang2 expression in a dose-dependent manner

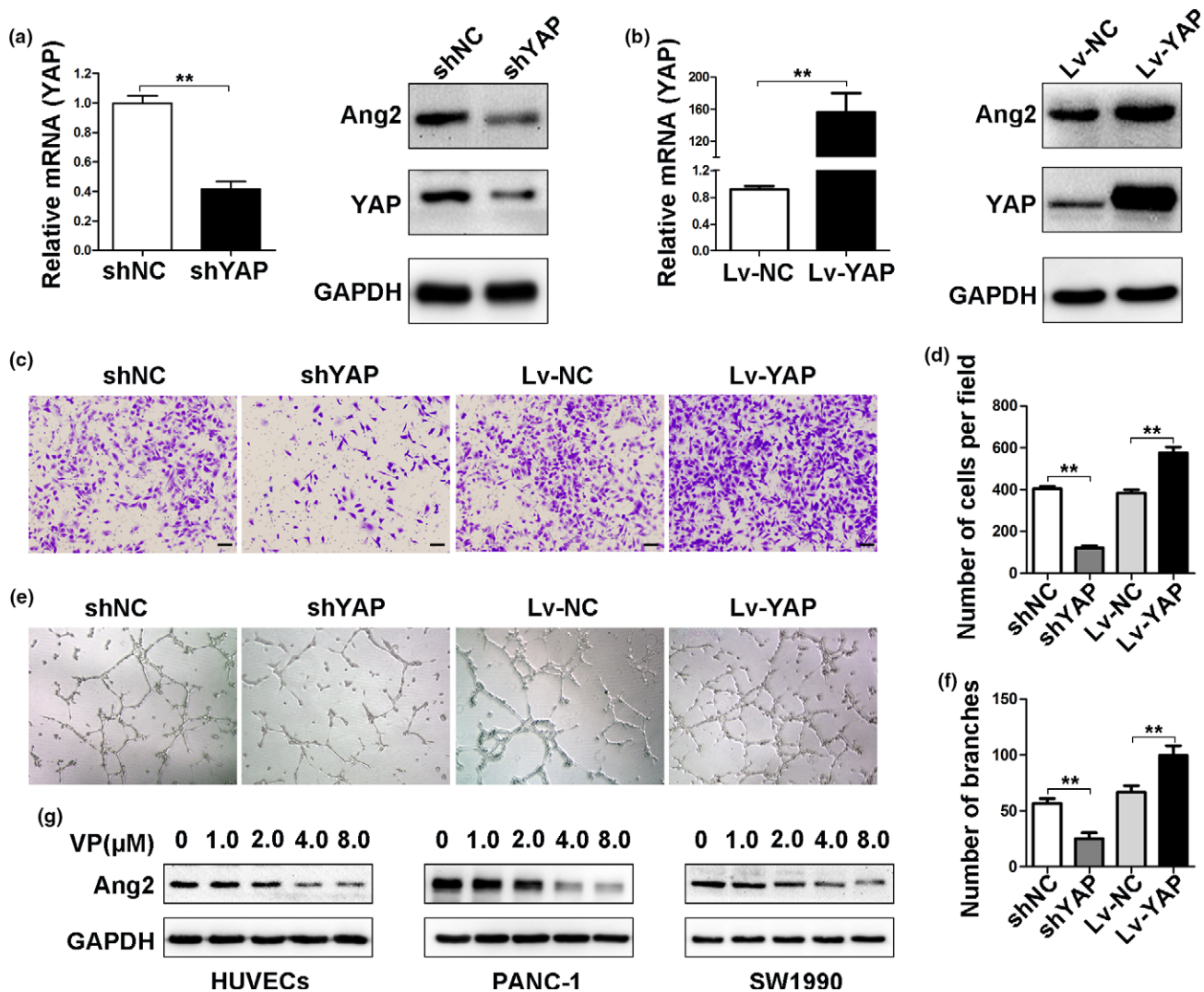


Fig. 5. YAP regulates Ang2 expression to enhance angiogenesis. (a) Human umbilical vein endothelial cells (HUVECs) were transfected with control or YAPshRNAs. YAP mRNA was detected by qRT-PCR, and YAP and Ang2 proteins by Western blot analysis. (b) HUVECs were transfected with control or YAP ectopic expression vectors. YAP mRNA was determined by qRT-PCR, and YAP and Ang2 proteins by Western blot analysis. (c–f) HUVECs were transfected with control or YAPshRNAs, or control or YAP ectopic expression vectors. (c) cell migration was analyzed by transwell assays (Magnification $\times 100$, bar = 100 μM), and (e, f) angiogenesis by tube formation assays (Magnification $\times 40$). Cell migration (d) and tube formation (f) were quantified. (g) The expression of Ang2 was detected by Western blot analysis in HUVECs and PDAC cells treated with verteporfin at various concentrations. Data were presented as mean \pm SD. * $P < 0.05$; ** $P < 0.01$; *** $P < 0.001$.

(Fig. 5g). Verteporfin inhibited the migration and tube formation of HUVECs (Fig. 6a,b). In a CAM angiogenesis model, verteporfin exhibited an anti-angiogenic activity as well (Fig. 6c). In the xenograft model, verteporfin-treated tumors expressed less Ang2 (Fig. 6d) and CD31 (Fig. 6e) than control tumors as detected by IHC (Fig. 6d).

Verteporfin suppresses the migration of PDAC cells and formation of VM via downregulating MMP2, VE-cadherin and α -SMA expression. The formation of VM by tumor cells contributes to tumor rapid progression, drug resistance and metastasis.⁽³³⁾ Verteporfin treatment inhibited the migration ability of PDAC cells as examined by transwell assays (Fig. 7a). PANC-1 and SW1990 cells were able to form tube-like structures, which was disrupted by verteporfin treatment (Fig. 7b). Verteporfin treatment inhibited the expression of MMP2, VE-cadherin and α -SMA in a dose-dependent manner (Fig. 7c), three markers for VM.⁽³⁴⁾ To quantify VM, we double stained tumor sections with antibodies against CD31 and PAS. CD31 is a well-known

marker for endothelial cells, while PAS is used to detect basement membrane structures and VM networks in tumors.⁽¹⁷⁾ Verteporfin treatment resulted in less detectable VM (branching networks of PAS+ structures and lacking CD31 staining) compared to the controls (Fig. 7d). Verteporfin-treated tumors had lower expression levels of MMP2, VE-cadherin and α -SMA than control tumors as detected by IHC (Fig. 7e). Similar results were observed in the SW1990 xenograft model (Fig. S3).

Discussion

Yes-associated protein-1 is highly expressed in various malignant tumors including pancreatic cancer, and its activation is an independent predictor of the survival of cancer patients.^(8,35,36) Although initially regarded as a photo-sensitizer in photodynamic therapy, verteporfin has recently been reported to exhibit anti-tumor activities by disrupting YAP-

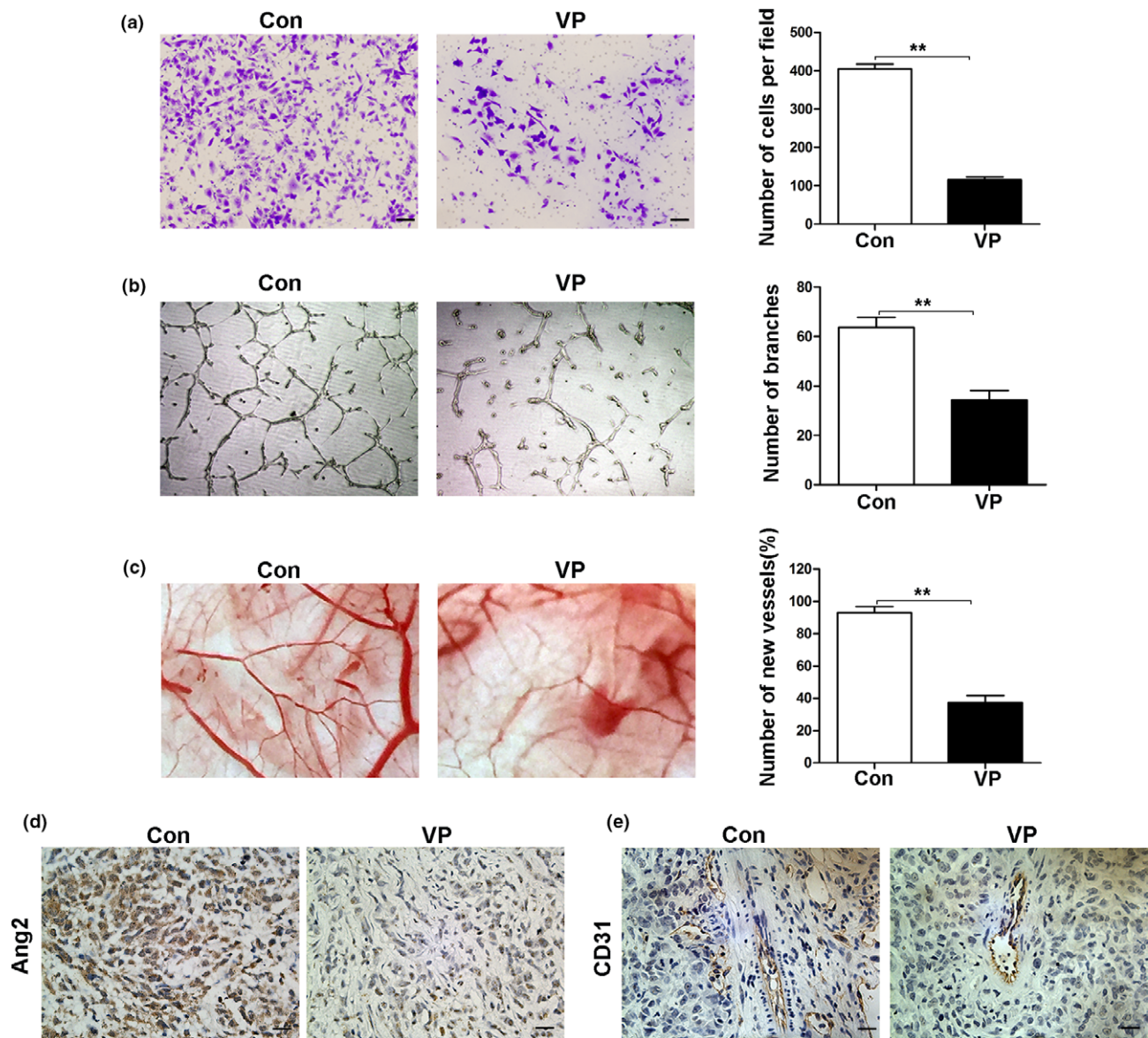


Fig. 6. Verteporfin inhibits angiogenesis by downregulating Ang2 expression. (a–c) Human umbilical vein endothelial cells (HUVECs) were pre-treated with verteporfin at 4 μ M concentration for 24 h. Cell migration was analyzed by transwell assays (Magnification $\times 100$, bar = 100 μ M) (a), and angiogenesis by tube formation assays (Magnification $\times 40$) (b) and by chorioallantoic membrane assays (c). (d, e) The expression of Ang2 and CD31 was detected by IHC (Magnification $\times 400$, bar = 25 μ M). Data were presented as mean \pm SD. * $P < 0.05$; ** $P < 0.01$; *** $P < 0.001$.

TEAD interaction.⁽²²⁾ In accordance with previous reports that verteporfin inhibited the growth of cells from esophageal cancer⁽²⁴⁾ and lung cancer,⁽²⁵⁾ our present results demonstrated that verteporfin also suppressed the growth of pancreatic cancer cells and induced apoptosis *in vitro* and *in vivo*. Verteporfin treatment led to downregulation of cyclinD1 and cyclinE1, modulation of Bcl-2 family proteins, and activation of PARP. Verteporfin had also displayed a profound effect on angiogenesis through suppressing Ang2 expression. Verteporfin suppressed the migration of PDAC cells and the formation of VM by downregulating MMP2, VE-cadherin and α -SMA (Fig. 8). The encouraging results warrant a further investigation of verteporfin as an anti-tumor agent in PDAC.

Recent studies suggest that the Hippo-YAP pathway is implicated in cell proliferation, apoptosis, chemo-resistance and angiogenesis.^(6,37) YAP regulates the transcription of

cyclinD1 and FOXM1, which are important factors for G1 progression and G1/S transition.⁽³¹⁾ Hyperactivated YAP also regulates the insensitivity to apoptosis of cancer cells.⁽³⁷⁾ Activated YAP resulted in gemcitabine resistance in pancreatic cancer.⁽³⁸⁾ Thus, YAP has become a promising target for seeking novel cancer therapeutics. It has been reported that verteporfin induced the sequestration of YAP in the cytoplasm by increasing 14-3-3 σ expression, thereby inhibiting YAP activation.⁽³⁹⁾ Verteporfin interfered with the YAP-TEAD pathway, resulting in downregulation of the downstream proto-oncogenes, such as c-myc and Axl, thus inducing growth inhibition, apoptosis, and G0/G1-phase cell cycle arrest of human retinoblastoma cells.⁽²³⁾ In the present study, we showed that verteporfin inhibited the proliferation and induced apoptosis of PDAC cells by regulating cell cycle- and apoptosis-related proteins via suppressing YAP-TEAD interaction.

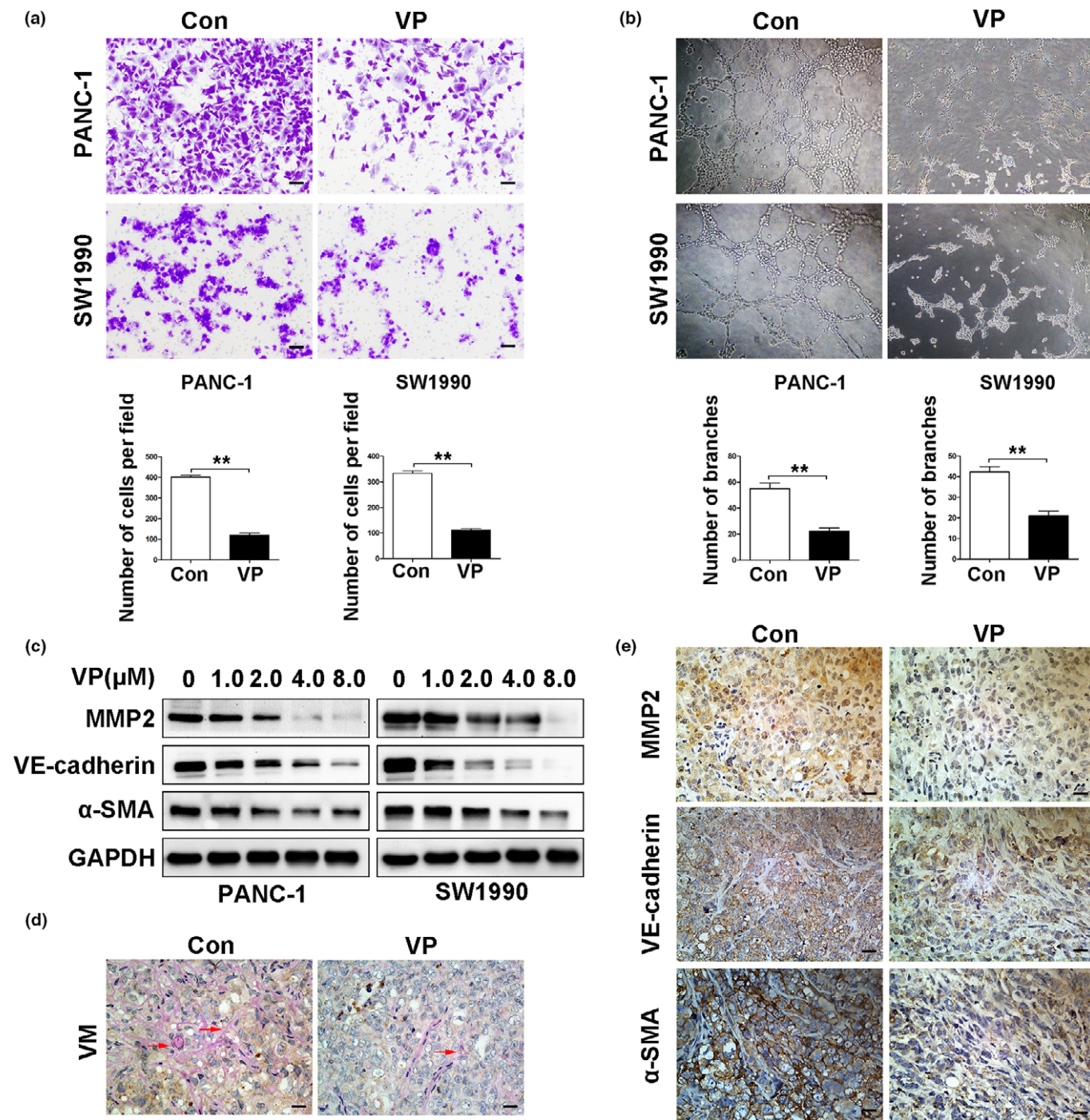


Fig. 7. Verteporfin suppresses vasculogenic mimicry *in vitro* and *in vivo*. PANC-1 and SW1990 cells were pre-treated with verteporfin at 4 μM concentration for 24 h. (a) Cell migration was analyzed by transwell assays (Magnification $\times 100$, bar = 100 μM), and (b) VM by tube formation assays (Magnification $\times 40$). The above results were quantified. (c) The expression of MMP2, VE-cadherin and α -SMA was detected by Western blot analysis in PANC-1 and SW1990 cells treated with verteporfin at various concentrations. (d) VM formed in tumors harvested from Figure 4 was detected by staining tumor sections with anti-CD31 and anti-PAS antibodies (red arrow, CD31-negative and PAS positive). (e) The expression of MMP2, VE-cadherin and α -SMA in tumors harvested from Figure 4 was detected by IHC (Magnification $\times 400$, bar = 25 μM). Data were presented as mean \pm SD. * $P < 0.05$; ** $P < 0.01$; *** $P < 0.001$.

Hippo signaling is also involved in tumor progression, metastasis, and angiogenesis.⁽⁶⁾ In cholangiocarcinoma, hyper-activated YAP enhanced the expression of pro-angiogenic MFAP5.⁽¹⁰⁾ The YAP-TEAD complex regulates the expression of genes participating in angiogenesis and cell migration, such as CTGF, CYR61 and VEGF-A, which could be inhibited by

verteporfin.⁽²³⁾ Ang2 is one member of the angiopoietin family which induces destabilization, disassociation from the endothelial cell basement membrane, migration and sprouting of endothelium cells, thus regulating tumor angiogenesis and progression.⁽⁴⁰⁾ High expression of Ang2 is associated with poor prognosis of patients with breast cancer,⁽⁴¹⁾ colorectal

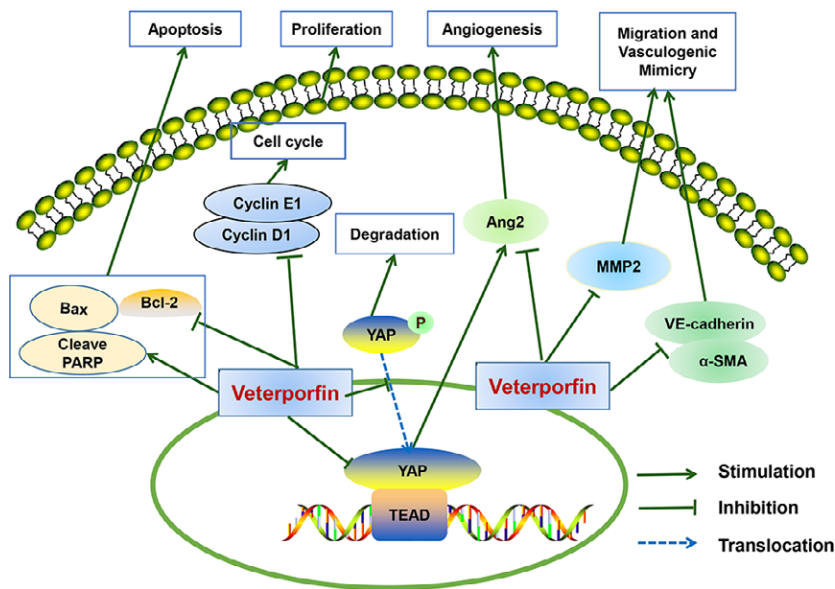


Fig. 8. Schematic of a hypothetical mechanism for the anti-tumor effects of verteporfin in pancreatic ductal adenocarcinoma (PDAC) cells. Verteporfin suppresses cell survival, migration, angiogenesis and vasculogenic mimicry of pancreatic cancer via disrupting the YAP-TEAD interaction. Verteporfin inhibits cell cycle progression by suppressing cyclinD1 and cyclinE1 expression. Verteporfin induces cell apoptosis by activating the intrinsic apoptosis pathway. Verteporfin also inhibits Ang2, MMP2, VE-cadherin and α -SMA expression to suppress angiogenesis and vasculogenic mimicry.

carcinoma⁽⁴²⁾ and melanoma.⁽⁴³⁾ The role of Ang2 in pancreatic cancer progression has also been reported, and silencing Ang2 exerted an anti-angiogenesis effect.⁽⁴⁴⁾ Ang2 stimulated the migration and invasion, and induced metastasis of pancreatic cancer cells through MMP2-mediated pathway.⁽⁴⁵⁾ Our previous study has shown that inhibition of Ang2 by T7 peptide, an active fragment of full-length Tumstatin, inhibited angiogenesis and exerted its antitumor effects.⁽²⁷⁾ It has been recently reported that YAP could regulate vascular remodeling and angiogenesis through transcriptionally targeting Ang2.⁽³²⁾ Our present results have shown that verteporfin could decrease Ang2 expression to regulate angiogenesis through disrupting YAP and TEAD interaction.

Vasculogenic mimicry is an alternative type of blood supplement independent of endothelial vessels, formed by the aggressive metastatic tumor cells.^(15,33) VM is shown to enhance tumor growth, chemoresistance and metastasis. Vascular signaling pathway, embryonic/stem cell pathways, and hypoxia/hypoxia-reoxygenation signaling pathways are implicated in tumor cell VM, which enhances a high degree of plasticity phenotype and promotes embryonic stem cells markers expression.^(15,46) It has been reported that YAP plays an important role in regulating stem cells in epithelial tissues,⁽⁴⁷⁾ but it is unknown whether YAP participates in VM. MMP2, VE-cadherin and α -SMA are key markers for VM.⁽³⁴⁾ In the present study, we found that verteporfin suppressed VM via downregulating MMP2, VE-cadherin and α -SMA expression. The dual effects of verteporfin on tumor

angiogenesis and VM may synergize to improve the efficacy of its anti-tumor activities against PDAC.

In summary, verteporfin is an FDA-approved photosensitizer for treating age-related macular degeneration and exhibits limited toxicity,⁽²¹⁾ and could inhibit tumorigenesis via disrupting YAP-TEAD complexes.⁽⁴⁸⁾ Our present results have demonstrated that verteporfin suppressed the growth of pancreatic cancer cells by inducing G1 phase arrest and apoptosis *in vitro* and *in vivo*. The mechanisms accounting for its activities include downregulation of cyclinD1 and cyclinE1, modulation of Bcl-2 family proteins and activation of PARP. Verteporfin has also displayed an inhibitory effect on angiogenesis by suppressing Ang2 expression, and the migration of PDAC cells and VM via downregulating MMP2, VE-cadherin and α -SMA expression. The encouraging results warrant a future investigation of verteporfin as a novel therapeutic in the treatment of pancreatic cancer.

Acknowledgments

This work was supported by the National Major Research and Development Program of China (2016YFC0106004), Shandong Provincial Science and Technology Development Planning, China (2015GSF121040) and Shandong Provincial Natural Science Foundation, China (ZR2012HL05 and ZR2015HL080).

Conflict of Interest

We have no conflict of interest.

References

- Ryan DP, Hong TS, Bardeesy N. Pancreatic adenocarcinoma. *N Engl J Med* 2014; **371**: 1039–49.
- Siegel RL, Miller KD, Jemal A. Cancer statistics, 2016. *CA Cancer J Clin* 2016; **66**: 7–30.
- Faris JE, Blaszkowsky LS, McDermott S *et al*. FOLFIRINOX in locally advanced pancreatic cancer: the Massachusetts General Hospital Cancer Center experience. *Oncologist* 2013; **18**: 543–8.
- Von Hoff DD, Ervin T, Arena FP *et al*. Increased survival in pancreatic cancer with nab-paclitaxel plus gemcitabine. *N Engl J Med* 2013; **369**: 1691–703.

- Zhao B, Tumaneng K, Guan KL. The Hippo pathway in organ size control, tissue regeneration and stem cell self-renewal. *Nat Cell Biol* 2011; **13**: 877–83.
- Sebio A, Lenz HJ. Molecular pathways: Hippo signaling, a critical tumor suppressor. *Clin Cancer Res* 2015; **21**: 5002–7.
- Kang W, Tong JH, Chan AW *et al*. Yes-associated protein 1 exhibits oncogenic property in gastric cancer and its nuclear accumulation associates with poor prognosis. *Clin Cancer Res* 2011; **17**: 2130–9.
- Sohn BH, Shim JJ, Kim SB *et al*. Inactivation of Hippo pathway is significantly associated with poor prognosis in hepatocellular carcinoma. *Clin Cancer Res* 2016; **22**: 1256–64.

- 9 Diep CH, Zucker KM, Hostetter G *et al.* Down-regulation of yes associated protein 1 expression reduces cell proliferation and clonogenicity of pancreatic cancer cells. *PLoS One* 2012; **7**: e32783.
- 10 Yang S, Zhang L, Purohit V *et al.* Active YAP promotes pancreatic cancer cell motility, invasion and tumorigenesis in a mitotic phosphorylation-dependent manner through LPAR3. *Oncotarget* 2015; **6**: 36019–31.
- 11 Morvaridi S, Dhall D, Greene MI *et al.* Role of YAP and TAZ in pancreatic ductal adenocarcinoma and in stellate cells associated with cancer and chronic pancreatitis. *Sci Rep* 2015; **5**: 16759.
- 12 Marti P, Stein C, Blumer T *et al.* YAP promotes proliferation, chemoresistance, and angiogenesis in human cholangiocarcinoma through TEAD transcription factors. *Hepatology* 2015; **62**: 1497–510.
- 13 Potente M, Gerhardt H, Carmeliet P. Basic and therapeutic aspects of angiogenesis. *Cell* 2011; **146**: 873–87.
- 14 Maniotis AJ, Folberg R, Hess A *et al.* Vascular channel formation by human melanoma cells in vivo and in vitro: vasculogenic mimicry. *Am J Pathol* 1999; **155**: 739–52.
- 15 Kirschmann DA, Seftor EA, Hardy KM *et al.* Molecular pathways: vasculogenic mimicry in tumor cells: diagnostic and therapeutic implications. *Clin Cancer Res* 2012; **18**: 2726–32.
- 16 Liu WB, Xu GL, Jia WD *et al.* Prognostic significance and mechanisms of patterned matrix vasculogenic mimicry in hepatocellular carcinoma. *Med Oncol* 2011; **28**(Suppl 1): S228–38.
- 17 Tan LY, Mintoff C, Johan MZ *et al.* Desmoglein 2 promotes vasculogenic mimicry in melanoma and is associated with poor clinical outcome. *Oncotarget* 2016; **7**: 46492–508. doi:10.18632/oncotarget.10216.
- 18 Guo JQ, Zheng QH, Chen H *et al.* Ginsenoside Rg3 inhibition of vasculogenic mimicry in pancreatic cancer through downregulation of VE-cadherin/EphA2/MMP9/MMP2 expression. *Int J Oncol* 2014; **45**: 1065–72.
- 19 Cao Z, Bao M, Miele L *et al.* Tumour vasculogenic mimicry is associated with poor prognosis of human cancer patients: a systemic review and meta-analysis. *Eur J Cancer* 2013; **49**: 3914–23.
- 20 Lin SZ, Wei WT, Chen H *et al.* Antitumor activity of emodin against pancreatic cancer depends on its dual role: promotion of apoptosis and suppression of angiogenesis. *PLoS One* 2012; **7**: e42146.
- 21 Henney JE. From the Food and Drug Administration. *JAMA* 2000; **283**: 2779.
- 22 Liu-Chittenden Y, Huang B, Shim JS *et al.* Genetic and pharmacological disruption of the TEAD-YAP complex suppresses the oncogenic activity of YAP. *Genes Dev* 2012; **26**: 1300–5.
- 23 Brodowska K, Al-Moujahed A, Marmalidou A *et al.* The clinically used photosensitizer verteporfin (VP) inhibits YAP-TEAD and human retinoblastoma cell growth in vitro without light activation. *Exp Eye Res* 2014; **124**: 67–73.
- 24 Song S, Honjo S, Jin J *et al.* The Hippo coactivator YAP1 mediates EGFR overexpression and confers chemoresistance in esophageal cancer. *Clin Cancer Res* 2015; **21**: 2580–90.
- 25 Cheng H, Zhang Z, Rodriguez-Barrueco R *et al.* Functional genomics screen identifies YAP1 as a key determinant to enhance treatment sensitivity in lung cancer cells. *Oncotarget* 2016; **7**: 28976–88.
- 26 Huggett MT, Jermyn M, Gillams A *et al.* Phase I/II study of verteporfin photodynamic therapy in locally advanced pancreatic cancer. *Br J Cancer* 2014; **110**: 1698–704.
- 27 Wang F, Dong X, Xiu P *et al.* T7 peptide inhibits angiogenesis via downregulation of angiopoietin-2 and autophagy. *Oncol Rep* 2015; **33**: 675–84.
- 28 Li X, Kong X, Wang Y *et al.* 53BP1 is a novel regulator of angiogenesis in breast cancer. *Cancer Sci* 2013; **104**: 1420–6.
- 29 Xiu P, Dong X, Dong X *et al.* Secretory clusterin contributes to oxaliplatin resistance by activating Akt pathway in hepatocellular carcinoma. *Cancer Sci* 2013; **104**: 375–82.
- 30 He C, Dong X, Zhai B *et al.* MiR-21 mediates sorafenib resistance of hepatocellular carcinoma cells by inhibiting autophagy via the PTEN/Akt pathway. *Oncotarget* 2015; **6**: 28867–81.
- 31 Mizuno T, Murakami H, Fujii M *et al.* YAP induces malignant mesothelioma cell proliferation by upregulating transcription of cell cycle-promoting genes. *Oncogene* 2012; **31**: 5117–22.
- 32 Choi HJ, Zhang H, Park H *et al.* Yes-associated protein regulates endothelial cell contact-mediated expression of angiopoietin-2. *Nat Commun* 2015; **6**: 6943.
- 33 Weis SM, Cheresh DA. Tumor angiogenesis: molecular pathways and therapeutic targets. *Nat Med* 2011; **17**: 1359–70.
- 34 Zhang C, Chen W, Zhang X *et al.* Galunisertib inhibits glioma vasculogenic mimicry formation induced by astrocytes. *Sci Rep* 2016; **6**: 23056.
- 35 Wang Y, Dong Q, Zhang Q *et al.* Overexpression of yes-associated protein contributes to progression and poor prognosis of non-small-cell lung cancer. *Cancer Sci* 2010; **101**: 1279–85.
- 36 Pei T, Li Y, Wang J *et al.* YAP is a critical oncogene in human cholangiocarcinoma. *Oncotarget* 2015; **6**: 17206–20.
- 37 Zhao Y, Yang X. The Hippo pathway in chemotherapeutic drug resistance. *Int J Cancer* 2015; **137**: 2767–73.
- 38 Chen M, Wang M, Xu S *et al.* Upregulation of miR-181c contributes to chemoresistance in pancreatic cancer by inactivating the Hippo signaling pathway. *Oncotarget* 2015; **6**: 44466–79.
- 39 Wang C, Zhu X, Feng W *et al.* Verteporfin inhibits YAP function through up-regulating 14-3-3Sigma sequestering YAP in the cytoplasm. *Am J Cancer Res* 2016; **6**: 27–37.
- 40 Vasudev NS, Reynolds AR. Anti-angiogenic therapy for cancer: current progress, unresolved questions and future directions. *Angiogenesis* 2014; **17**: 471–94.
- 41 Imanishi Y, Hu B, Jarzynka MJ *et al.* Angiopoietin-2 stimulates breast cancer metastasis through the alpha(5)beta(1) integrin-mediated pathway. *Cancer Res* 2007; **67**: 4254–63.
- 42 Goede V, Coutelle O, Neuneier J *et al.* Identification of serum angiopoietin-2 as a biomarker for clinical outcome of colorectal cancer patients treated with bevacizumab-containing therapy. *Br J Cancer* 2010; **103**: 1407–14.
- 43 Holopainen T, Saharinen P, D'Amico G *et al.* Effects of angiopoietin-2-blocking antibody on endothelial cell-cell junctions and lung metastasis. *J Natl Cancer Inst* 2012; **104**: 461–75.
- 44 Zhou J, Zhang ZX, Zhao H *et al.* Anti-angiogenesis by lentivirus-mediated small interfering RNA silencing of angiopoietin-2 gene in pancreatic carcinoma. *Technol Cancer Res Treat* 2011; **10**: 361–9.
- 45 Zhang ZX, Zhou J, Zhang Y *et al.* Knockdown of angiopoietin-2 suppresses metastasis in human pancreatic carcinoma by reduced matrix metalloproteinase-2. *Mol Biotechnol* 2013; **53**: 336–44.
- 46 Seftor RE, Hess AR, Seftor EA *et al.* Tumor cell vasculogenic mimicry: from controversy to therapeutic promise. *Am J Pathol* 2012; **181**: 1115–25.
- 47 Meng Z, Moroishi T, Guan KL. Mechanisms of Hippo pathway regulation. *Genes Dev* 2016; **30**: 1–17.
- 48 Perra A, Kowalik MA, Ghiso E *et al.* YAP activation is an early event and a potential therapeutic target in liver cancer development. *J Hepatol* 2014; **61**: 1088–96.

Supporting Information

Additional Supporting Information may be found online in the supporting information tab for this article:

Fig. S1. Verteporfin inhibits the viability and induces the apoptosis of HPDE6 and HUVECs.

Fig. S2. Verteporfin suppresses necrosis-associated protein expression in PDAC cells.

Fig. S3. Verteporfin suppresses vasculogenic mimicry in SW1990 xenografts.

Appendix S1. Materials and methods.