

## Review Article

# Exercise and Protein Intake: A Synergistic Approach against Sarcopenia

**Anna Maria Martone,<sup>1</sup> Emanuele Marzetti,<sup>1</sup> Riccardo Calvani,<sup>1</sup> Anna Picca,<sup>1</sup> Matteo Tosato,<sup>1</sup> Luca Santoro,<sup>2</sup> Angela Di Giorgio,<sup>2</sup> Antonio Nesci,<sup>2</sup> Alex Sisto,<sup>1</sup> Angelo Santoliquido,<sup>2</sup> and Francesco Landi<sup>1</sup>**

<sup>1</sup>*Department of Geriatrics, Neurosciences and Orthopedics, Catholic University of the Sacred Heart, Rome, Italy*

<sup>2</sup>*Department of Medicine, Catholic University of the Sacred Heart, Rome, Italy*

Correspondence should be addressed to Francesco Landi; [francesco.landi@unicatt.it](mailto:francesco.landi@unicatt.it)

Received 13 July 2016; Revised 22 November 2016; Accepted 30 January 2017; Published 21 March 2017

Academic Editor: Ignacio Ara

Copyright © 2017 Anna Maria Martone et al. This is an open access article distributed under the Creative Commons Attribution License, which permits unrestricted use, distribution, and reproduction in any medium, provided the original work is properly cited.

Sarcopenia, the age-dependent loss of muscle mass and function/strength, is increasingly recognized as a major risk factor for adverse outcomes in frail older people. As such, the skeletal muscle is a relevant target for interventions aimed at preventing or postponing the occurrence of negative health-related events in late life. The association among physical inactivity, insufficient intake of energy and protein, and poor muscle health in older adults suggests that physical exercise and targeted nutritional supplementation may offer substantial therapeutic gain against sarcopenia and its negative correlates. This view is supported by observational studies as well as by small-scale clinical trials. In this review, we summarize the available evidence on the beneficial effects of behavioral interventions on sarcopenia. We also briefly describe how the knowledge gathered so far has been used to design the “Sarcopenia and Physical fRailty IN older people: multicomponent Treatment strategies” (SPRINTT) project. The randomized clinical trial conducted within SPRINTT will provide robust evidence on the effectiveness of exercise and nutrition at preventing negative outcomes associated with sarcopenia and physical frailty.

## 1. Introduction

The aging process is accompanied by multisystem derangements that ultimately deplete the homeostatic capacity of the organism as a whole. The progressive loss of muscle mass and strength/function is one of the most noticeable correlates of aging, evident across multiple species [1]. This condition, referred to as sarcopenia [2], has a multifactorial origin, involving lifestyle habits, disease triggers, and age-dependent biological changes (e.g., chronic inflammation, mitochondrial abnormalities, loss of neuromuscular junctions, reduced satellite cell number/function, and hormonal alterations) [3].

Muscle decay is advocated as a true biomarker of aging, able to distinguish, at the clinical level, biological from chronological age [1]. Not surprisingly, the “muscle aging” phenomenon, as a paradigm for exploring the aging process as a whole, has attracted remarkable attention in the field of biogerontology [1]. At the same time, the recognition

of sarcopenia as a major determinant of adverse health outcomes has ignited growing interest among researchers in the attempt of devising interventions to halt or reverse muscle aging [4].

The lack of a univocal operational definition of sarcopenia represents a major limitation in the field. Originally described solely as the age-related loss of muscle mass [5], it is now widely acknowledged that sarcopenia encompasses both quantitative (i.e., mass) and qualitative (i.e., strength and/or function) declines of skeletal muscle [6]. Yet, depending on the tools used for the assessment of muscle mass and function and the reference values considered, the resulting phenotypes are only partly overlapping [7]. As a consequence, sarcopenia has not yet been incorporated in everyday clinical practice nor is its underlying pathophysiology fully understood, which impacts the discovery of meaningful biological targets for interventions.

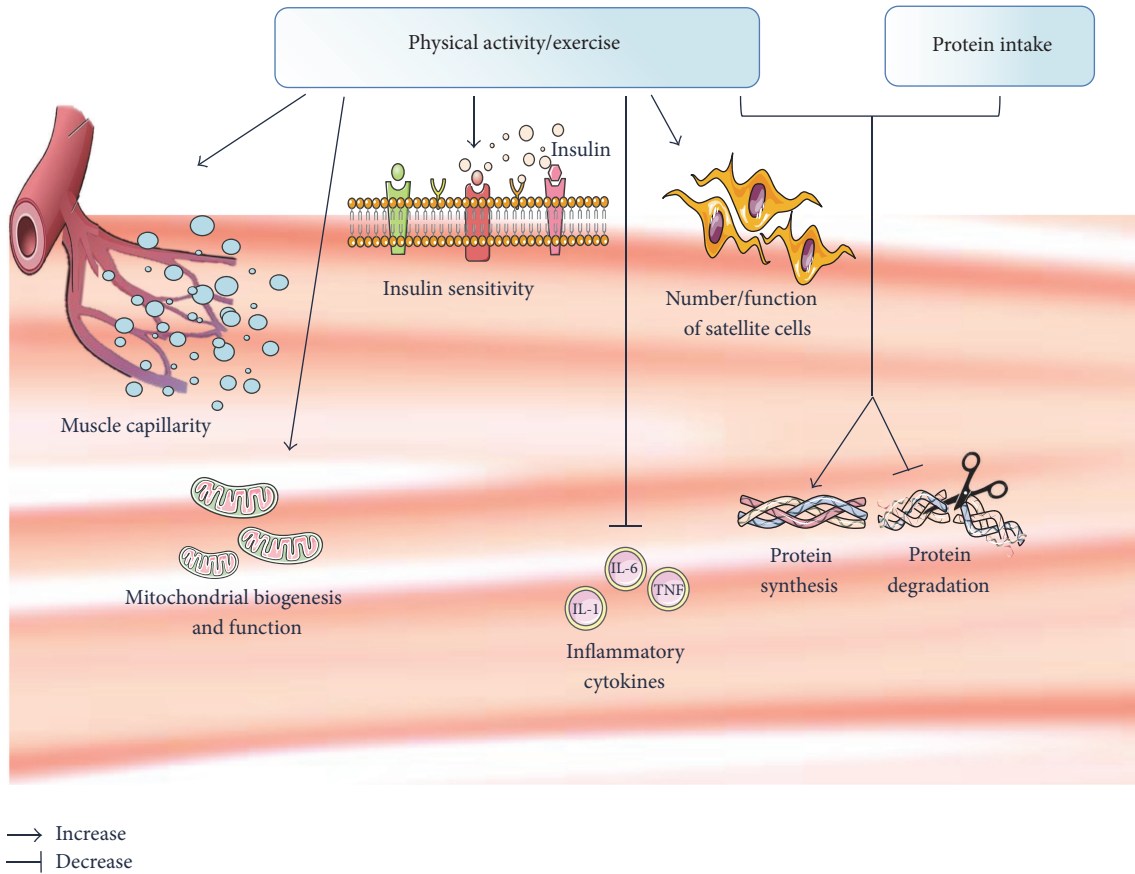


FIGURE 1: Scheme illustrating major effects of physical activity/exercise and protein intake on muscle physiology. IL: interleukin; TNF: tumor necrosis factor.

In such a scenario, physical exercise and adequate protein and energy intake are to date the only strategies of proven efficacy (and safety) to improve muscle health across ages [8]. It is speculated that the combination of the two interventions might convey much larger benefits than those achievable through the administration of either of them. Indeed, the synergy between exercise and diet may tackle sarcopenia in multiple aspects, possibly maximizing the effects brought about by each of the two components [9].

## 2. Protein and Muscle: An Intimate Liaison

Muscle mass is controlled by complex interactions of multiple factors; nonetheless, the dynamic balance between protein synthesis and breakdown is a major determinant of it [10]. Indeed, meaningful losses or gains in muscle mass and quality result from sustained variations in muscle protein synthesis, breakdown, or the combination of both processes. Whether sarcopenia primarily results from diminished basal protein synthetic rates or blunted muscle anabolism in response to anabolic stimuli is yet to be established.

Muscle protein synthesis is regulated by several anabolic stimuli, including physical activity and food ingestion. Essential amino acids (EAAs) are the most important nutritional inputs for protein synthesis. In this respect, leucine is

considered the primary nutritional regulator of muscle protein anabolism [11], due to its ability to trigger the mammalian target of rapamycin (mTOR) pathway and inhibit the proteasome (Figure 1) [11]. It is worth noting that aged muscles show a reduced anabolic response to low doses (e.g., less than 10 g) of EAAs [12]; yet, higher doses (e.g., 10–15 g, with at least 3 g of leucine) are sufficient to induce a protein anabolic response comparable to that observed in younger adults [12]. Therefore, it is recommended that older persons consume protein sources with higher proportions of EAAs (i.e., high-quality proteins), such as lean meat and other leucine-rich foods (e.g., soybeans, peanuts, cowpea, and lentils) [13].

Recently, consensus and opinion articles as well as small-scale clinical trials have emphasized that protein intake above the current recommended dietary allowance (RDA; 0.8 g/kg/day) may be requested to maintain muscle health in late life [14–17]. It appears therefore appropriate to promote protein intake of 1.0–1.2 g/kg/day, while 1.2–1.5 g/kg/day of protein may be required in older adults with acute or chronic diseases [10, 16, 17]. Finally, older people with severe illnesses or overt malnutrition may need as much as 2.0 g/kg/day of protein [17].

Closely related to the amino acid composition of dietary proteins is their absorption kinetics. Indeed, the speed of protein digestion and amino acid absorption by the gut impacts

postprandial protein deposition as well as protein breakdown [18]. Noticeably, in young individuals, slowly digested proteins (e.g., casein) produce greater protein retention than those that are digested faster (e.g., whey) [18]. A divergent pattern has been observed in older persons, such that the postprandial protein synthesis appears to be stimulated to a greater extent by whey proteins as opposed to casein [19, 20]. Although the concept of “fast” versus “slow” protein has been questioned [21], the evidence accumulated thus far is sufficiently robust to recommend the prescription of fast-digested protein supplements to improve muscle health in old age [17].

With regard to the source of dietary protein, no conclusive evidence is available about the possible differential effects of animal-derived versus plant-based proteins. It should however be considered that animal protein sources generally contain greater amounts of EAAs and are more digestible than those of vegetal origin [22]. Furthermore, plant-based proteins undergo greater splanchnic extraction and subsequent urea synthesis than animal-derived proteins [22]. Recently, the consumption of large amounts of soy proteins, as a strategy to overcome their lower anabolic potency, has been shown to stimulate muscle protein synthesis in older men to a smaller degree than isolated whey proteins, both at rest and following exercise [23]. Such a difference has been attributed to the fact that soy proteins are directed more toward oxidation rather than being used for *de novo* muscle protein synthesis. In addition to proteins, meat contains a vast array of biologically active compounds (e.g., creatine, carnitine, iron, and cobalamin), all of which may favorably influence muscle physiology [24]. Based on the current evidence, the consumption of lean meat 4-5 times a week should therefore be recommended to maintain muscle health in advanced age.

Finally, the formulation of protein sources may have an important effect on protein digestion, amino acid absorption, and muscle anabolism. For instance, Conley et al. [25] showed that older adults achieved higher plasma amino acid concentrations after ingestion of a liquid meal replacement product as compared with an energy- and macronutrient-matched solid replacement. Whether specific physical properties of protein sources may be harnessed to obtain therapeutic gain in the context of sarcopenia warrants further investigation.

### **3. Exercise: Much More Than Mechanical Stimulation**

Physical activity refers to any level of bodily movement that results from skeletal muscle activation and leads to an increase in energy expenditure [26]. Exercise, instead, is a planned, structured, repetitive activity aimed at improving fitness [26]. Physical activity and exercise represent, to date, the most effective interventions for the promotion of healthy aging [27]. With regard to the skeletal muscle, exercise mitigates several deleterious effects of aging, including impaired insulin sensitivity, mitochondrial dysfunction, acceleration of myonuclear apoptosis, and inflammation (Figure 1) [28].

Among the various types of training, low-intensity endurance exercise increases aerobic fitness by improving

skeletal muscle oxidative capacity and cardiovascular function. The increased muscle capillarity allows matching the greater requests for mitochondrial oxygen flux [29, 30]. Enlargement of the muscle mitochondrial compartment is typically observed during endurance exercise, especially in untrained persons (Figure 1). Conversely, the muscle fiber cross-sectional area is relatively unaffected by this type of training [31]. High-load resistance exercise, instead, impacts both fiber cross-sectional area and muscle function (strength and power), mainly through increasing the number and size of fast-twitch fibers (i.e., types IIA and IIX) [30]. In response to different exercise protocols, muscle cells modulate the expression of specific proteins pertaining to mitochondrial biogenesis and function, such as peroxisome proliferator activated receptor gamma coactivator-1 alpha (PGC-1 $\alpha$ ) and muscle fatty acid binding protein (mFABP) [28]. In particular, PGC-1 $\alpha$ , by activating several transcription factors, orchestrates mitochondrial biogenesis, while mFABP is involved in fatty acid utilization for mitochondrial energy production [28].

The activation and recruitment of satellite cells are believed to represent a major adaptation to chronic exercise (Figure 1). The incorporation of new nuclei from satellite cells into existing muscle fibers increases the number of “myonuclear domains” (i.e., the anatomical and functional units made up by a myonucleus and the surrounding volume of sarcoplasm) and, therefore, the fiber cross-sectional area [32]. Satellite cell activation is influenced by a number of factors, including age, nutritional status, and type and intensity of physical exercise. During physical exercise, myofibers release hormones and inflammatory mediators able to activate satellite cells [33], ultimately increasing the number of nuclei incorporated in muscle fibers.

Downregulation of systemic inflammation is an additional mechanism whereby exercise positively impacts muscle physiology. Studies have shown a decrease of circulating levels of several inflammatory mediators in older adults engaged in exercise interventions (both aerobic and resistance training) [34]. Such an adaptation has been correlated with improvements in muscle mass and physical performance [35–37]. Furthermore, downregulation of tumor necrosis factor alpha (TNF- $\alpha$ ) mediated myonuclear apoptosis has been observed in senescent rodents performing treadmill exercise, in conjunction with gains in muscle mass and strength [38].

Collectively, available evidence indicates that regular physical exercise positively affects muscle physiology through local and systemic effects. As discussed in the next section, it is plausible that the combination of exercise and targeted nutrition interventions may be a more valuable strategy to manage sarcopenia.

### **4. Protein Supplementation and Exercise: A Plausible, Magnificent Strategy**

The intensity, duration, and mode of the activity performed as well as the nutritional status and diet (in particular daily protein intake) markedly influence skeletal muscle mass, strength, and metabolism [28, 39]. However, in older people,

muscular responses to a single anabolic stimulus may be blunted compared with young persons, possibly reflecting differences in the physiological reserve across life stages [28]. The combination of exercise with increased protein intake seems to be the most plausible strategy to overcome such an issue (Figure 1). This view has been embraced by several scientific societies as well as experts in the fields of muscle aging, nutrition, and physiology [17, 40, 41]. In this regard, Tieland et al. [42] showed that 24-week protein supplementation combined with resistance training increased muscle mass, strength, and physical performance in frail elderly participants. The combination of protein plus exercise allowed for larger gains in muscle mass relative to exercise alone [43].

As highlighted by Cruz-Jentoft et al. [40], assessing the possible synergistic effect of a multicomponent intervention (exercise plus nutrition/protein supplementation) on muscle properties is a challenging task. Ideally, studies should use at least four arms (i.e., exercise, nutrition, both, and neither of them), should be conducted for a sufficient time, and should enroll an adequately large population to appreciate the differential responses elicited on “anabolic resistant” aged muscle. Another critical aspect to consider is the timing of “administration” of exercise and nutrition. Muscle performance and feeding patterns are influenced by and affect circadian rhythms [43, 44] that could themselves be altered over the course of aging [45]. In addition, muscle protein synthesis fluctuates quite largely during the day and is influenced by several factors, including total energy/carbohydrate intake, timing of protein intake, and functional and training status [46]. In this respect, it should be considered that the existence of an optimal time window for protein consumption in relation to exercise is still a matter of debate. Traditionally, it is assumed that muscle is responsive to nutrient ingestion, especially amino acids, for up to three hours following resistance exercise [47]. However, inconsistent results in timing and total protein effects on muscle metabolism and lean body mass accretion have been reported, especially in older persons engaged in chronic resistance exercise programs [48]. Moreover, as elegantly highlighted by Simmons et al. [46], the effect of the timing of protein intake in conjunction with exercise may be biased by the methodologies used to measure muscle protein synthesis. That said, the identification of a theoretical anabolic time window for nutrient/protein ingestion would be highly relevant to older adults. Indeed, the consumption of protein at the time when the muscle anabolic responsiveness is maximal would allow for reducing the overall protein load and maintaining fat-free mass during periods of either increased energy expenditure or limited protein intake (e.g., exercise, chronic and acute disease conditions) [48].

### 5. The SPRINTT Clinical Trial: Testing Exercise and Nutrition in the “Real World”

Despite the encouraging findings obtained by observational studies and small clinical trials, the effectiveness of combining physical exercise and dietary protein intervention at preventing adverse health outcomes in older adults has not yet

been conclusively established. The ongoing “Sarcopenia and Physical fRailty IN older people: multicomponent Treatment strategies” (SPRINTT) project has been specifically designed to provide clinicians and health authorities with all the evidence necessary to promote practical strategies for older adults at risk of physical disability [49]. With an expected sample size of 1,500 participants followed up for an average of 24 months, SPRINTT is the largest and longest clinical trial designed to test the effectiveness of a multimodal strategy at preventing mobility disability in older adults with physical frailty and sarcopenia (PF&S) [49, 50]. The PF&S condition is defined by the cooccurrence of low muscle mass (according to the cut points recommended by the Foundation for the National Institute of Health Sarcopenia Project [51]) and reduced physical performance, operationalized as a summary score on the Short Physical Performance Battery [52] between three and nine. Older adults with PF&S are randomized to either a multicomponent intervention (MCI), involving structured physical activity, nutritional counseling/dietary intervention, and an information and communication technology (ICT) intervention, or a Healthy Aging Lifestyle Education (HALE) program [49]. The physical activity program has been taken and modified from the Lifestyle Interventions and Independence for Elders (LIFE) study [53], given its full safety profile and efficacy in preventing mobility disability in at-risk older persons. As part of the ICT component of the MCI, actimetry data are collected through a dedicated device in order to monitor adherence to physical activity and provide personalized feedback/tips to the participant.

The nutritional component of the SPRINTT study has been designed to maximize the benefits of physical activity. As previously discussed, nutrition represents an important and potentially modifiable factor that impacts muscle health and the frailty status of older people [8, 54]. As such, not only is nutrition involved in the direct assessment of frailty, but also it may play a role in the definition of interventions aimed at restoring robustness and contrasting sarcopenia [8, 55]. In SPRINTT, the multifactorial properties of nutrition in bolstering the beneficial effect of physical activity on PF&S are exploited through the combination of nutritional assessments and personalized dietary recommendations. SPRINTT broadly aims at achieving two predefined nutritional targets: (1) total daily energy intake of 25–30-kcal/kg body weight [56] and (2) average daily protein intake of at least 1.0–1.2 g/kg body weight [17].

### 6. Conclusions

The preservation of muscle mass and function is increasingly recognized as a crucial factor for promoting healthy aging and improving quality of life. As such, sarcopenia represents an ideal target for interventions aimed at preventing or postponing the occurrence of negative health-related events in late life. At present, multicomponent lifestyle interventions, involving the combination of exercise and nutrition (in particular, adequate protein intake), are the only “fountain of youth” available to achieve healthy aging. High-quality clinical trials are needed to identify the type, modes, and

duration of multidomain interventions that maximize the health benefits in advanced age.

## Competing Interests

Riccardo Calvani, Francesco Landi, Emanuele Marzetti, and Matteo Tosato are partners of the SPRINTT Consortium, which is partly funded by the European Federation of Pharmaceutical Industries and Associations (EFPIA). Angela Di Giorgio, Anna Maria Martone, Antonio Nesci, Anna Picca, Angelo Santoliquido, Luca Santoro, and Alex Sisto declare no competing interests.

## Authors' Contributions

Anna Maria Martone, Riccardo Calvani, and Anna Picca conceived and drafted the manuscript; Matteo Tosato and Alex Sisto contributed to the conception of the manuscript; Luca Santoro, Angela Di Giorgio, Antonio Nesci, and Angelo Santoliquido revised the manuscript, providing intellectual input; Emanuele Marzetti and Francesco Landi served as scientific advisors and critically revised the manuscript. All authors approved the final version of the manuscript.

## Acknowledgments

The study was partly supported by grants from the Innovative Medicines Initiative-Joint Undertaking (IMI-JU #115621), intramural research grants from the Catholic University of the Sacred Heart (D3.2 2013 and D3.2 2015), the nonprofit research foundation "Centro Studi Achille e Linda Lorenzon," and Fondazione Roma (NCDs Call for Proposals 2013). The figure was drawn using the freely available Servier Medical Art resource (<http://www.servier.com/Powerpoint-image-bank>).

## References

- [1] A. L. Fisher, "Of worms and women: sarcopenia and its role in disability and mortality," *Journal of the American Geriatrics Society*, vol. 52, no. 7, pp. 1185–1190, 2004.
- [2] A. J. Cruz-Jentoft and F. Landi, "Sarcopenia," *Clinical Medicine, Journal of the Royal College of Physicians*, vol. 14, no. 2, pp. 183–186, 2014.
- [3] Y. Rolland, S. Czerwinski, G. A. Van Kan et al., "Sarcopenia: its assessment, etiology, pathogenesis, consequences and future perspectives," *Journal of Nutrition, Health and Aging*, vol. 12, no. 7, pp. 433–450, 2008.
- [4] F. Landi, R. Calvani, M. Cesari et al., "Sarcopenia as the biological substrate of physical frailty," *Clinics in Geriatric Medicine*, vol. 31, no. 3, pp. 367–374, 2015.
- [5] I. H. Rosenberg, "Summary comments," *American Journal of Clinical Nutrition*, vol. 50, no. 5, pp. 1231–1233, 1989.
- [6] R. Calvani, F. Marini, M. Cesari et al., "Biomarkers for physical frailty and sarcopenia: state of the science and future developments," *Journal of Cachexia, Sarcopenia and Muscle*, vol. 6, no. 4, pp. 278–286, 2015.
- [7] D. Scott, A. Hayes, K. M. Sanders, D. Aitken, P. R. Ebeling, and G. Jones, "Operational definitions of sarcopenia and their associations with 5-year changes in falls risk in community-dwelling middle-aged and older adults," *Osteoporosis International*, vol. 25, no. 1, pp. 187–193, 2014.
- [8] R. Calvani, A. Miccheli, F. Landi et al., "Current nutritional recommendations and novel dietary strategies to manage sarcopenia," *The Journal of Frailty & Aging*, vol. 2, no. 1, pp. 38–53, 2013.
- [9] D. R. Moore, "Keeping older muscle "young" through dietary protein and physical activity," *Advances in Nutrition*, vol. 5, no. 5, pp. 599S–607S, 2014.
- [10] D. Paddon-Jones, K. R. Short, W. W. Campbell, E. Volpi, and R. R. Wolfe, "Role of dietary protein in the sarcopenia of aging," *The American Journal of Clinical Nutrition*, vol. 87, no. 5, pp. 1562S–1566S, 2008.
- [11] J. C. Anthony, T. G. Anthony, S. R. Kimball, and L. S. Jefferson, "Signaling pathways involved in translational control of protein synthesis in skeletal muscle by leucine," *Journal of Nutrition*, vol. 131, no. 3, pp. 856S–860S, 2001.
- [12] C. S. Katsanos, H. Kobayashi, M. Sheffield-Moore, A. Aarsland, and R. R. Wolfe, "Aging is associated with diminished accretion of muscle proteins after the ingestion of a small bolus of essential amino acids," *American Journal of Clinical Nutrition*, vol. 82, no. 5, pp. 1065–1073, 2005.
- [13] F. Landi, R. Calvani, M. Tosato et al., "Protein intake and muscle health in old age: from biological plausibility to clinical evidence," *Nutrients*, vol. 8, no. 5, article 295, 2016.
- [14] R. A. Fielding, B. Vellas, W. J. Evans et al., "Sarcopenia: an undiagnosed condition in older adults. current consensus definition: prevalence, etiology, and consequences. International working group on sarcopenia," *Journal of the American Medical Directors Association*, vol. 12, no. 4, pp. 249–256, 2011.
- [15] E. Volpi, W. W. Campbell, J. T. Dwyer et al., "Is the optimal level of protein intake for older adults greater than the recommended dietary allowance?" *The Journals of Gerontology, Series A: Biological Sciences and Medical Sciences*, vol. 68, no. 6, pp. 677–681, 2013.
- [16] J. E. Morley, J. M. Argiles, W. J. Evans et al., "Nutritional recommendations for the management of sarcopenia," *Journal of the American Medical Directors Association*, vol. 11, no. 6, pp. 391–396, 2010.
- [17] J. Bauer, G. Biolo, T. Cederholm et al., "Evidence-based recommendations for optimal dietary protein intake in older people: a position paper from the prot-age study group," *Journal of the American Medical Directors Association*, vol. 14, no. 8, pp. 542–559, 2013.
- [18] Y. Boirie, M. Dangin, P. Gachon, M.-P. Vasson, J.-L. Maubois, and B. Beaufrère, "Slow and fast dietary proteins differently modulate postprandial protein accretion," *Proceedings of the National Academy of Sciences of the United States of America*, vol. 94, no. 26, pp. 14930–14935, 1997.
- [19] M. Dangin, C. Guillet, C. Garcia-Rodenas et al., "The rate of protein digestion affects protein gain differently during aging in humans," *Journal of Physiology*, vol. 549, no. 2, pp. 635–644, 2003.
- [20] B. Pennings, Y. Boirie, J. M. G. Senden, A. P. Gijsen, H. Kuipers, and L. J. C. van Loon, "Whey protein stimulates postprandial muscle protein accretion more effectively than do casein and casein hydrolysate in older men," *The American Journal of Clinical Nutrition*, vol. 93, no. 5, pp. 997–1005, 2011.
- [21] R. Koopman, S. Walrand, M. Beelen et al., "Dietary protein digestion and absorption rates and the subsequent postprandial muscle protein synthetic response do not differ between young

- and elderly men," *Journal of Nutrition*, vol. 139, no. 9, pp. 1707–1713, 2009.
- [22] S. van Vliet, N. A. Burd, and L. J. C. van Loon, "The skeletal muscle anabolic response to plant- versus animal-based protein consumption," *Journal of Nutrition*, vol. 145, no. 9, pp. 1981–1991, 2015.
- [23] Y. Yang, T. A. Churchward-Venne, N. A. Burd, L. Breen, M. A. Tarnopolsky, and S. M. Phillips, "Myofibrillar protein synthesis following ingestion of soy protein isolate at rest and after resistance exercise in elderly men," *Nutrition and Metabolism*, vol. 9, article no. 57, 2012.
- [24] M. Rondanelli, S. Perna, M. A. Faliva, G. Peroni, V. Infantino, and R. Pozzi, "Novel insights on intake of meat and prevention of sarcopenia: all reasons for an adequate consumption," *Nutrition Hospitalaria*, vol. 32, no. 5, pp. 2136–2143, 2015.
- [25] T. B. Conley, J. W. Apolzan, H. J. Leidy, K. A. Greaves, E. Lim, and W. W. Campbell, "Effect of food form on postprandial plasma amino acid concentrations in older adults," *The British Journal of Nutrition*, vol. 106, no. 2, pp. 203–207, 2011.
- [26] C. J. Caspersen, K. E. Powell, and G. Christenson, "Physical activity, exercise and physical fitness: definitions and distinctions for health-related research," *Public Health Reports*, vol. 100, no. 2, pp. 126–131, 1985.
- [27] World Health Organization, *Global Recommendations on Physical Activity for Health*, WHO, Geneva, Switzerland, 2010, [http://apps.who.int/iris/bitstream/10665/44399/1/9789241599979\\_eng.pdf](http://apps.who.int/iris/bitstream/10665/44399/1/9789241599979_eng.pdf).
- [28] G. D. Cartee, R. T. Hepple, M. M. Bamman, and J. R. Zierath, "Exercise promotes healthy aging of skeletal muscle," *Cell Metabolism*, vol. 23, no. 6, pp. 1034–1047, 2016.
- [29] E. Marzetti, R. Calvani, M. Cesari et al., "Mitochondrial dysfunction and sarcopenia of aging: from signaling pathways to clinical trials," *International Journal of Biochemistry and Cell Biology*, vol. 45, no. 10, pp. 2288–2301, 2013.
- [30] F. Landi, E. Marzetti, A. M. Martone, R. Bernabei, and G. Onder, "Exercise as a remedy for sarcopenia," *Current Opinion in Clinical Nutrition and Metabolic Care*, vol. 17, no. 1, pp. 25–31, 2014.
- [31] E. Pasini, S. Le Douairon Lahaye, V. Flati et al., "Effects of treadmill exercise and training frequency on anabolic signaling pathways in the skeletal muscle of aged rats," *Experimental Gerontology*, vol. 47, no. 1, pp. 23–28, 2012.
- [32] R. Calvani, A.-M. Joseph, P. J. Adhietty et al., "Mitochondrial pathways in sarcopenia of aging and disuse muscle atrophy," *Biological Chemistry*, vol. 394, no. 3, pp. 393–414, 2013.
- [33] J.-S. Kang and R. S. Krauss, "Muscle stem cells in developmental and regenerative myogenesis," *Current Opinion in Clinical Nutrition and Metabolic Care*, vol. 13, no. 3, pp. 243–248, 2010.
- [34] T. S. Bowen, G. Schuler, and V. Adams, "Skeletal muscle wasting in cachexia and sarcopenia: molecular pathophysiology and impact of exercise training," *Journal of Cachexia, Sarcopenia and Muscle*, vol. 6, no. 3, pp. 197–207, 2015.
- [35] B. J. Nicklas, F.-C. Hsu, T. J. Brinkley et al., "Exercise training and plasma C-reactive protein and interleukin-6 in elderly people," *Journal of the American Geriatrics Society*, vol. 56, no. 11, pp. 2045–2052, 2008.
- [36] P. R. P. Nunes, L. C. Barcelos, A. A. Oliveira et al., "Effect of resistance training on muscular strength and indicators of abdominal adiposity, metabolic risk, and inflammation in postmenopausal women: controlled and randomized clinical trial of efficacy of training volume," *Age*, vol. 38, no. 2, article 40, 2016.
- [37] Y. Mavros, S. Kay, K. A. Simpson et al., "Reductions in C-reactive protein in older adults with type 2 diabetes are related to improvements in body composition following a randomized controlled trial of resistance training," *Journal of Cachexia, Sarcopenia and Muscle*, vol. 5, no. 2, pp. 111–120, 2014.
- [38] E. Marzetti, L. Groban, S. E. Wohlgemuth et al., "Effects of short-term GH supplementation and treadmill exercise training on physical performance and skeletal muscle apoptosis in old rats," *American Journal of Physiology—Regulatory Integrative and Comparative Physiology*, vol. 294, no. 2, pp. R558–R567, 2008.
- [39] B. Egan and J. R. Zierath, "Exercise metabolism and the molecular regulation of skeletal muscle adaptation," *Cell Metabolism*, vol. 17, no. 2, pp. 162–184, 2013.
- [40] A. J. Cruz-Jentoft, F. Landi, S. M. Schneider et al., "Prevalence of and interventions for sarcopenia in ageing adults: a systematic review. Report of the International Sarcopenia Initiative (EWG-SOP and IWGS)," *Age and Ageing*, vol. 43, no. 6, pp. 48–759, 2014.
- [41] N. E. P. Deutz, J. M. Bauer, R. Barazzoni et al., "Protein intake and exercise for optimal muscle function with aging: recommendations from the ESPEN Expert Group," *Clinical Nutrition*, vol. 33, no. 6, pp. 929–936, 2014.
- [42] M. Tieland, M. L. Dirks, N. van der Zwaluw et al., "Protein supplementation increases muscle mass gain during prolonged resistance-type exercise training in frail elderly people: a randomized, double-blind, placebo-controlled trial," *Journal of the American Medical Directors Association*, vol. 13, no. 8, pp. 713–719, 2012.
- [43] E. Facer-Childs and R. Brandstaetter, "The impact of circadian phenotype and time since awakening on diurnal performance in athletes," *Current Biology*, vol. 25, no. 4, pp. 518–522, 2015.
- [44] V. D. Longo and S. Panda, "Fasting, circadian rhythms, and time-restricted feeding in healthy lifespan," *Cell Metabolism*, vol. 23, no. 6, pp. 1048–1059, 2016.
- [45] J. Mattis and A. Sehgal, "Circadian rhythms, sleep, and disorders of aging," *Trends in Endocrinology and Metabolism*, vol. 27, no. 4, pp. 192–203, 2016.
- [46] E. Simmons, J. D. Fluckey, and S. E. Riechman, "Cumulative muscle protein synthesis and protein intake requirements," *Annual Review of Nutrition*, vol. 36, pp. 17–43, 2016.
- [47] G. Biolo, K. D. Tipton, S. Klein, and R. R. Wolfe, "An abundant supply of amino acids enhances the metabolic effect of exercise on muscle protein," *American Journal of Physiology - Endocrinology and Metabolism*, vol. 273, no. 1, pp. E122–E129, 1997.
- [48] R. D. Andrews, D. A. MacLean, and S. E. Riechman, "Protein intake for skeletal muscle hypertrophy with resistance training in seniors," *International Journal of Sport Nutrition and Exercise Metabolism*, vol. 16, no. 4, pp. 362–372, 2006.
- [49] E. Marzetti, R. Calvani, F. Landi et al., "Innovative medicines initiative: the SPRINTT project," *The Journal of Frailty & Aging*, vol. 4, no. 4, pp. 207–208, 2015.
- [50] E. Marzetti, R. Calvani, M. Cesari et al., "Operationalization of the physical frailty & sarcopenia syndrome: rationale and clinical implementation," *Translational Medicine @ UniSa*, vol. 13, pp. 29–32, 2016.
- [51] P. M. Cawthon, K. W. Peters, M. D. Shardell et al., "Cutpoints for low appendicular lean mass that identify older adults with clinically significant weakness," *Journals of Gerontology. Series A Biological Sciences and Medical Sciences*, vol. 69, no. 5, pp. 567–575, 2014.

- [52] J. M. Guralnik, E. M. Simonsick, L. Ferrucci et al., "A short physical performance battery assessing lower extremity function: association with self-reported disability and prediction of mortality and nursing home admission," *Journals of Gerontology*, vol. 49, no. 2, pp. M85–M94, 1994.
- [53] M. Pahor, J. M. Guralnik, W. T. Ambrosius et al., "Effect of structured physical activity on prevention of major mobility disability in older adults: the LIFE study randomized clinical trial," *The Journal of the American Medical Association*, vol. 311, no. 23, pp. 2387–2396, 2014.
- [54] J.-P. Michel, A. J. Cruz-Jentoft, and T. Cederholm, "Frailty, exercise and nutrition," *Clinics in Geriatric Medicine*, vol. 31, no. 3, pp. 375–387, 2015.
- [55] G. A. van Kan, Y. Rolland, M. Houles, S. Gillette-Guyonnet, M. Soto, and B. Vellas, "The assessment of frailty in older adults," *Clinics in Geriatric Medicine*, vol. 26, no. 2, pp. 275–286, 2010.
- [56] M. I. T. D. Correia, R. A. Hegazi, T. Higashiguchi et al., "Evidence-based recommendations for addressing malnutrition in health care: an updated strategy from the feedM.E. global study group," *Journal of the American Medical Directors Association*, vol. 15, no. 8, pp. 544–550, 2014.