



Published in final edited form as:

Cancer Epidemiol Biomarkers Prev. 2017 April ; 26(4): 516–524. doi:10.1158/1055-9965.EPI-16-0926.

Measures Matter: The Local Exposure/Isolation (LEx/Is) Metrics and Relationships Between Local Level Segregation and Breast Cancer Survival

Amin Bemanian¹ and Kirsten M.M. Beyer²

¹PhD Program for Public and Community Health, Institute for Health and Society, Medical College of Wisconsin and Medical Scientist Training Program, Medical College of Wisconsin

²Division of Epidemiology, Institute for Health and Society, Medical College of Wisconsin

Abstract

Background—The Black to White disparity in breast cancer survival is increasing, and racial residential segregation is a potential driver for this trend. However, study findings have been mixed, and no study has comprehensively compared the effectiveness of different local level segregation metrics in explaining cancer survival.

Methods—We proposed a set of new local segregation metrics named LEx/Is (Local Exposure and Isolation) and compared our new local isolation metric to two related metrics - the location quotient (LQ) and the index of concentration at extremes (ICE) - across the 102 largest US metropolitan areas. Then, using case data from the Milwaukee, WI metropolitan area, we used proportional hazards models to explore associations between segregation and breast cancer survival.

Results—Across the 102 metropolitan areas, the new local isolation metric was less skewed than the LQ or ICE. Across all races, Hispanic isolation was associated with poorer all-cause survival, and Hispanic LQ and Hispanic-White ICE were found to be associated with poorer survival for both breast cancer specific and all-cause mortality. For Black patients, Black LQ was associated with lower all-cause mortality and Black local isolation was associated with reduced all-cause and breast cancer specific mortality. ICE was found to suffer from high multicollinearity.

Conclusions—Local segregation is associated with breast cancer survival, but associations varied based on patient race and metric employed.

Impact—We highlight how selection of a segregation measure can alter study findings. These relationships need to be validated in other geographic areas.

Keywords

Racial residential segregation; Breast cancer; Cancer survival; Racial disparities; Methodology; modeling; and biostatistics

Correspondence Contact Information: Amin Bemanian, 8701 Watertown Plank Road, Suite H2100, Milwaukee, WI 53226, Phone: 414-955-7509, Fax: 414-955-0176, abemanian@mcw.edu.

Financial Disclosure: The authors declare no potential conflicts of interest.

1. INTRODUCTION

1.1 Segregation and Health

Nearly 50 years after the passage of the Fair Housing Act, residential racial segregation still plagues many US cities.(1,2) Black segregation levels declined across the US from 2000 to 2010, but remain extreme in northern cities such as Milwaukee, Detroit, Chicago and New York.(3) Additionally, Hispanic segregation is increasing nationally.(3) Segregation has been linked not only to social and economic inequality,(4–7) but also to racial health disparities. Like segregation, racial health disparities persist, including a mortality gap between Blacks and Whites and lower life expectancy among Blacks.(8,9) Previous studies have found that metropolitan areas with higher segregation see worse Black mortality, while segregation has a mixed association with White mortality.(10,11) Segregation is thought to contribute to disparities in several ways, including by widening socioeconomic status (SES) gaps across races, concentrating minorities in underserved neighborhoods, and increasing exposure of environmental hazards to minorities.(5,10)

One such health disparity is the widening breast cancer mortality and survival gap between Black and White women.(12,13) Whitman *et al.* (2011) found a positive correlation between Black-White mortality rate ratios and segregation in a sample of 24 cities.(14) Mammography utilization has been shown to be decreased in counties with greater Asian and Black segregation, but increased in counties with greater Hispanic segregation.(15) Pruitt *et al.*(2015) identified Black and Hispanic local segregation to be associated with decreased breast cancer survival.(16) In contrast, Warner and Gomez found that residence in a high percent Black neighborhood corresponded to *decreased* Black breast cancer mortality and increased White mortality, but was not associated with survival length.(17) Mixed findings among these studies may be partially due to variation among methods used to measure segregation.

1.2 Measuring Segregation: Metropolitan Area Metrics

Much research has focused on how to best measure segregation. Massey and Denton outline five major “dimensions” of segregation: evenness, exposure, concentration, centralization, and clustering.(18) The majority of the literature on traditional segregation metrics focuses on evenness and exposure/isolation.(19–22) Evenness measures how racial/ethnic groups are distributed across the subunits (e.g. census tracts, ZIP codes) within a metropolitan area, with a maximum evenness indicating that proportions for groups are constant across all subunits.(18) Dissimilarity is the most common measure of evenness, but the Gini, Atkinson, and entropy indices may be used.(19,23–26) Alternatively, the exposure index measures the geographic potential for two individuals from two different racial/ethnic groups to interact. (18,27) Exposure ($E_{m,n}$) has been defined by Lieberman as:(27)

$$E_{m,n} = \sum_{i=1}^N \frac{x_{im}}{Y_m} * \frac{x_{in}}{X_i}$$

Where i is a specific subunit, N is the total number of subunits in the MSA, m and n are two racial/ethnic groups, x_{im} is the number of individuals from a specific ethnic group within a specific subunit, Y_m is the total number of individuals from a specific ethnic group in the entire MSA, and X_i is the total population of the subunit. Massey and Denton propose interpreting exposure as the probability that a random individual from group m shares a common subunit with an individual from group n .(18) Analogously, the isolation index measures the potential of interaction among members of the same group.

While traditional segregation measures have been well studied and validated, they have a major conceptual limitation as summary measures of a larger region (e.g. metropolitan statistical areas (MSAs)). They do not provide insight into the racial makeup or lived experiences of smaller subunits within that region. Their equations average the racial compositions of the subunits. On a city scale, the objective of traditional metrics is to determine whether racial groups occupy different spaces within the city. For subunits (tracts and ZCTAs), we are generally more interested in determining how much a subunit's demographics are manifesting the city's segregation levels, rather than whether groups occupy different spaces within the smaller unit. In order to study segregation at a local level, we require new metrics.

1.3 Measuring Segregation: Small Area Metrics

Local metrics must describe local experiences of segregation. Existing local segregation indices such as the location quotient (LQ) and the index of concentration at extremes (ICE) have been examined for relationships with cancer outcomes. However, neither of these indices provides an intuitive way to examine co-residence of two races in the same space, which could be useful to measure interactions among individuals of different racial or ethnic groups.

The location quotient (LQ) for a particular ZCTA (or another areal subunit) i and racial/ethnic group m is given as follows:(4,16)

$$LQ_{im} = \left(\frac{x_{im}}{X_i} \right) / \left(\frac{Y_m}{Y} \right)$$

where Y is the total population of the MSA. An LQ value of zero indicates that there are no individuals of that particular race/ethnicity within the ZCTA, while a value of one indicates that the proportion of that racial/ethnic group within the ZCTA is equal to the proportion of that racial/ethnic group in the larger region (e.g. MSA). In order to correct for potential skew problems, a $\log_{10}(x + 1)$ transformation can be applied.(16)

The index of concentration at extremes (ICE) is calculated, per Krieger et al. (2016), using a generalized formula:(28)

$$ICE_i = \frac{D_i - P_i}{T_i}$$

where D_j is the population of members of a “deprived” category in ZCTA i , P_j is the population of a “privileged” category in the ZCTA, and T_i is the total population of the ZCTA. The “deprived” and “privileged” categories can be defined by race/ethnicity (i.e. Black as deprived and White as privileged) or by a combination of race/ethnicity and income quintile (e.g. Black/80th Percentile or Lower vs White/20th Percentile or Higher). The purpose of controlling for income is to reduce multicollinearity between racial composition and SES.(28)

An alternative approach to describing local segregation are typology methods that convert numerical indices into categorical classifications.(29) These classifications have predefined boundaries to categorize the neighborhoods. Such approaches have been argued as being robust incorporating multiple dimensions of segregation and advantageous by describing neighborhoods in “normative” terms (e.g. “diverse” or “predominately ethnic”).(29) Additionally, the proportion of neighborhoods of each type within the metropolitan area can be used as a summary metric for the region.(29,30) This paper focuses on comparing numerical metrics, but typological methods provide another potential approach.

1.4 Research Objectives

In this paper we are interested in the relationship between racial residential segregation and breast cancer survival. First, we propose a new class of local segregation metrics, called LEx/Is (Local Exposure and Isolation), adapting the exposure and isolation metrics into local metrics. Then, we compare LEx/Is with the LQ and ICE across 102 US MSAs. Finally, we examine the relationship between local segregation and breast cancer survival in the Milwaukee, WI metropolitan area while comparing LEx/Is, LQ and ICE. This paper thus contributes both a new segregation measurement approach and a comparison of three metrics in the study of an important health disparity.

2. METHODS AND MATERIALS

2.1 LEx/Is: a new set of local segregation metrics

We propose a novel set of local segregation metrics based on the traditional exposure and isolation indices.(18) The purpose of the local exposure and isolation indices is to measure the probability that two individuals living within a specific subunit (i.e. the ZCTA) of either different or the same racial/ethnic group(s) will interact. Using the assumption that individuals within a subunit are randomly mixed, we estimate this probability as randomly and independently selecting two individuals living in that subunit:

$$P_{m,n}(i) = p_{im} \times p_{in} = \frac{x_{im}}{X_i} * \frac{x_{in}}{X_i}$$

For the case where $m = n$, this is the local exposure probability between two groups, while where $m \neq n$ is the local isolation probability of a single group. We standardize this probability with a logit transformation and center it against the expected case that all races/ethnicities are evenly distributed across the entire MSA. The resulting index is:

$$E_{m,n}^*(i) = \text{logit}(P_{m,n}(i)) - \text{logit}(P_m \times P_n) = \log\left(\frac{p_{im} \times p_{in}}{1 - p_{im} \times p_{in}}\right) - \log\left(\frac{P_m \times P_n}{1 - P_m \times P_n}\right)$$

Where $E_{m,n}^*(i)$ is the Localized Exposure/Isolation metric (LEx/Is) for ZCTA i , and P_m is the proportion of group m out of the entire MSA. A zero value for local exposure indicates that the estimated probability of the interaction between two people of the given groups within the subunit is equal to the expected probability if the MSA were perfectly mixed. Values greater than zero indicate that the interaction is more likely to occur within the subunit than in the MSA, and values less than zero indicate that it is less likely. Exponentiation of each LEx/Is metric results in the odds ratio of the specific exposure or isolation of interest in the ZCTA relative to the MSA. The resulting local isolation metrics are comparable to location quotients (e.g. Black local isolation and Black LQ), and can be used in statistical models in an analogous fashion. The local exposure metrics can additionally be interpreted as meaningful interaction terms of the isolation terms (e.g. Black-Hispanic exposure is a function of Black isolation and Hispanic isolation). Models can be developed including isolation terms only, exposure terms only, or a combination of terms, depending on the research question.

2.2 A comparison across MSAs

We first compared three local segregation metrics (LQ, ICE and LEx/Is) across the 102 largest US MSAs, based on 2010 census data. We also examined the 15 most segregated and 15 least segregated MSAs, according to their 2010 MSA-wide level of Black-White isolation.(31) Correlations among the local isolation metric, LQ, and ICE were examined using Kendall's τ . Local exposure was not compared, as it is not conceptually analogous. The statistical distributions of local indices across MSAs were plotted and compared.

2.3 The Milwaukee, WI Study Area

The Milwaukee-Waukesha-West Allis, WI MSA had a total population of 1,581,159 residents in the 2010 US Census, of whom 69% were non-Hispanic White, 16% were non-Hispanic Black, and 9% were Hispanic/Latino. Milwaukee's metropolitan area is extremely segregated, with the highest level of overall Black-White isolation of the 100 largest MSAs in 2010.(31) The MSA was chosen as the scale for the study in keeping with previous literature examining segregation and cancer outcomes.(16,32–35) Additionally, MSAs are recommended over municipal boundaries, as they represent the full extent of the housing market in a given metropolitan setting, and include greater diversity of lived experiences within MSA.(36)

2.4 Data Sources

Patient case data was obtained from the Wisconsin Cancer Reporting System (WCRS) for invasive female breast cancer cases from years 2002–2011. WCRS collects reports of newly diagnosed pre-invasive and invasive cancer cases from physicians and clinics across Wisconsin, along with demographic information about the patients and tumor characteristics. Only patients who were non-Hispanic White, non-Hispanic Black, or

Hispanic were included in the study, as these groups are most affected by segregation and are by far the largest racial and ethnic groups in the region. There was no missing data for ZIP code and only 0.72% of cases were either un-staged or missing stage data. Records missing stage were excluded. Demographic data for ZCTAs was obtained from a combination of the 2000 and 2010 US Decennial Census and the 2008–2012 American Community Survey (ACS).(37–39) Census counts were used to calculate segregation indices for both 2000 and 2010. The percent of households living below the poverty line was obtained from the 2000 Census and the five year 2008–2012 ACS. Cases diagnosed in 2005 or earlier were matched to the 2000 Census Variables, while cases from 2006 and onwards were matched to the ACS and 2010 Census variables.

2.5 Statistical Analysis

Descriptive analyses were conducted to characterize the study population. Multivariate Cox proportional hazards regressions were used to model survival time for all-cause and breast cancer specific mortality. All models controlled for age, diagnosis stage, race/ethnicity, and ZCTA level shared frailties. Non-Hispanic White patients were categorized as “White”, non-Hispanic Black/African American patients were categorized as “Black”, and Hispanic/Latino patients, regardless of race, were categorized as “Hispanic.” Different models for each local segregation measure were tested with and without controlling for ZCTA SES to investigate collinearity between segregation and SES. SES was measured by the ZCTA’s poverty area status (>20% households below poverty line) for models using LEx/Is and LQ, and by controlling for income in the calculation of ICE. Models were stratified on diagnosis stage, age, and ZCTA poverty, due to proportional hazards assumption concerns. All analyses were conducted in the R statistical language.(40)

3. RESULTS

3.1 Comparison of local isolation to other local segregation indices across MSAs

Correlations were strongest between local isolation and LQ (Kendall’s τ White: 0.729, Black: 0.945, Hispanic: 0.946). ICE, uncontrolled for income, showed moderate to strong correlations with local isolation (Black: 0.624 and Hispanic: 0.428), while controlling for income resulted in weaker correlations (Black: 0.326 and Hispanic: 0.265). All correlations were found to be significant at a $p < 0.001$ confidence level. A comparison of Black isolation, Black LQ, and Black ICE (no income) found local isolation to be less skewed than LQ or ICE for the case of all 102 MSAs and the 15 most segregated MSAs, and no worse skewed in the 15 least segregated MSAs, as shown in Figure 1.

3.2 Relationship between racial residential segregation and breast cancer survival

Table 1 presents the characteristics of the study population. Black and Hispanic patients tended to be younger, more likely to live in ZCTAs designated as poverty areas, and more likely to be diagnosed at a later stage. Majorities of Black and White patients lived in ZCTAs where they were the majority race, while a plurality of Hispanic patients lived in predominately White ZCTAs. As illustrated in Figure 2, Black and Hispanic populations are clustered in ZCTAs within Milwaukee County, where there are higher poverty rates. Black

isolation ($\tau = 0.447$), Hispanic isolation ($\tau = 0.423$), and Black-Hispanic exposure ($\tau = 0.510$) all were significantly correlated to the poverty level of the ZCTA ($p < 0.001$ for all).

Boxplots in Figure 2 reveal Black and White patients had little overlap in their Black local isolation, Black LQ, and Black-White race-only ICE scores, but had more overlap for Hispanic segregation indices. Hispanic patients' segregation scores overlapped with both other races, except for Black patients with high Black local isolation and Black LQ scores. Differences in the scaling of each segregation index are apparent in Figure 1 as well. ICE scores adjusting for race and income together were in a very tight range and showed heavy overlap across races. Segregation indices were examined for multicollinearity using the variance inflation factor (VIF). ICE was found to have much higher VIFs (Hispanic-White: 5.94, Hispanic-White controlled for income: 10.05) than local isolation (1.22) or LQ (1.32). Correlation between Black-White and Hispanic-White ICE ($\rho = 0.879$) was far higher than the correlation between Black and Hispanic local isolation and LQ ($\rho = 0.230$ and -0.011), likely resulting in the difference in multicollinearity

Segregation was found to be significantly associated with both all-cause survival and breast cancer specific survival, as shown in Table 2. ZCTA poverty area status was significantly associated with decreased all-cause and breast cancer specific survival in all models that included it. Local Hispanic isolation was significantly associated with decreased all-cause survival, even after adjustment for poverty area status. Local Black-Hispanic exposure was nearly significant ($p = 0.052$) for poorer all-cause survival when not adjusted for poverty. Hispanic LQ was associated with poorer all-cause and breast cancer specific survival, but these relationships became non-significant once adjusted for poverty. Hispanic-White ICE, controlled for income, was found to be significantly associated with poorer all-cause survival, while the unadjusted Hispanic-White ICE was associated with poorer breast cancer specific survival. Unadjusted Black-White ICE was associated with better all-cause and breast cancer specific survival, but this relationship was not significant when ICE was controlled for income. Black patients were found to have significantly poorer survival in all models relative to Whites. A model with only individual-level variables found Hispanics to have significantly poorer all-cause survival relative to Whites (HR: 1.42, 95% CI: 1.00–2.01), but this became non-significant in models which included local Hispanic segregation.

Within-race survival models provided evidence that segregation is related differently to survival across races, as shown in Table 3. Black patients were found to have improved all-cause survival in neighborhoods with higher Black local isolation and LQ, and improved breast cancer specific survival with higher Black local isolation. White patients had significantly poorer survival in ZCTAs with higher Hispanic-White ICE scores adjusted for income (HR: 280.9. CI: 1.10–71461.1), but this estimate is highly unstable. Additionally, for Whites, the Hispanic LQ ($p = 0.079$) and Hispanic local isolation ($p = 0.056$) were nearly significant predictors of poorer all-cause survival.

4. DISCUSSION

This paper proposes a set of alternative local segregation metrics known as LEx/Is. LEx/Is is conceptually distinct from previous local methods by estimating the relative likelihood of

specific racial interactions at the local level. The location quotient is the relative percent composition of a specific race/ethnicity, while the index of concentrated extremes is an absolute rate difference between “privileged” and “disadvantaged” groups. Comparing these metrics, we found that the local isolation index was most correlated to the LQ. This is expected, as both the LQ and local isolation are only dependent on a single racial proportion within a subunit, whereas ICE is dependent on the percent difference of two races. While the proposed local isolation metric is similar to the LQ, we consider that the local isolation index may provide a stronger framework for extension and improvement. Future work could incorporate additional data to better estimate the probability of interactions at the local level. Additionally, the local exposure index is unique from either LQ or ICE.

A comparison of the distributions of each metric reveals that the local isolation metric tends to be more symmetric and normally distributed – especially in situations of higher overall MSA level segregation. The differences between isolation and LQ are likely due at least in part to selection of the logit term of LEx/Is versus the $\log_{10}(x+1)$ transformation of LQ. For future studies where a normality assumption is necessary, the distributions of different metrics should be considered. Additional transformations can be applied to the LQ and ICE or they can be categorized to make them suitable for these analyses. Proportional hazards models lack such assumptions, allowing us to test all of the metrics for relationships with breast cancer survival in this study.

Survival analyses showed that local segregation had significant relationships with all-cause and breast cancer specific survival. Notably, models including only patient level covariates identified Hispanic ethnicity as a risk factor for poorer survival, while models with a measure of Hispanic segregation associated segregation with poorer mortality but not the patient’s Hispanic ethnicity. This difference highlights how using only a patient’s race/ethnicity as a variable may mask the areal effect of segregation as an individual level effect. Local Hispanic isolation and Hispanic-White ICE maintained significant associations even after adjusting for ZCTA SES, indicating that these metrics may be more sensitive than the LQ. The difference between the performance of LQ and local isolation is likely due at least in part to how the logarithmic and logit transformation behave with values very close to 0 or 1. The ICE and LQ are finitely bound by range of proportions. Due to the logistic transformation, LEx/Is will approach $+\infty$ as the proportion product ($p_{im} \times p_{in}$) approaches 1 and will approach $-\infty$ as the product approaches 0. The ICE models, however, violate the assumption of no multicollinearity, making them unsuitable for survival analysis. This high multicollinearity resulted in the unstable confidence intervals shown in Tables 2 and 3, as multicollinearity results in increased standard error estimates for the effect coefficient.⁽⁴¹⁾ It is unclear whether the multicollinearity stems from the extreme segregation seen in the Milwaukee MSA or is a more general concern; additional research is needed to address this question. One possible remedy is to split the models by patient race and only test the effect of the specific ICE which corresponds to the race in question (i.e. Black patients and Black-White ICE).

Black-Hispanic exposure was not significantly related to survival in any model. Nevertheless, the local exposure component of LEx/Is presents a new opportunity to investigate how different racial and ethnic groups co-occupying and interacting socially in

the same space could affect health outcomes. While a term looking at the interaction between two location quotients is possible, it would not be as easy to interpret as local exposure. Similarly, the ICE focuses on the difference between groups and cannot measure co-residence or diversity directly. Furthermore, local exposure provides a value-agnostic framework to look at racial interactions, whereas ICE requires prior judgment regarding which group is privileged and which is deprived, especially when income-adjusted.

Splitting the models by patient race revealed that the relationship between segregation and survival varied significantly by patient race. Notably, Black patients tended to fare better in communities with high Black isolation for both all-cause and breast cancer specific survival. This finding echoes prior work by Warner and Gomez, who found that Black women living in predominantly Black neighborhoods in highly segregated cities in California experienced improved survival.(17) It is very important to note that these results do not necessarily mean that residential racial segregation confers a survival benefit for Black women. Whitman et al. found that metropolitan area segregation was associated with larger disparities in Black-White breast cancer mortality.(14) Beyond breast cancer, Gibbons and Yang's analysis of Philadelphia neighborhoods found Black individuals living in predominately White neighborhoods were nearly twice as likely to report poor or fair health relative to their counterparts.(42) In combination, these findings may suggest that while metropolitan area segregation is associated with poorer survival, within the existing reality of segregation, racial and ethnic enclaves may protect the health of minority residents. Black patients in Black neighborhoods may benefit, for instance, from a combination of increased social support, better access to health care, more willingness to access care, or less exposure to stress due to racism. This "ethnic density effect" has also been documented in the United Kingdom where minority individuals experienced less interpersonal racism in areas with higher ethnic density and suffer from less disease when economic deprivation is controlled.(43) More research is necessary to examine the health effects of living in diverse neighborhoods. There was a limited ability to investigate the effects of diversity in this study given the extreme segregation of Milwaukee, but the local exposure index would be well suited for such an approach.

There are several study limitations. First, data on individual level SES was not available, and thus our findings rely on ZCTA level socioeconomic measures. It is important not to assume that all patients living in poverty areas were impoverished or the converse. Additionally, this study had very few Hispanic patients (n = 252), making any sort of interaction between Hispanic ethnicity and segregation difficult to identify. This study is limited to a single metropolitan area, which is one of the most segregated cities in the country. Thus, these findings are not universally generalizable. In particular, Southern and Western cities have a different history of residential segregation and often have different racial distributions than those in the Midwest and Northeast.(44) Studies comparing findings across multiple MSAs are necessary to determine whether these relationships depend on geographic region or overall segregation levels. By pooling multiple MSAs, larger sample sizes would enable the investigation of the interaction of patient race and specific segregation experiences.

Finally, the LEx/Is metrics – like the LQ and ICE – do not account for spatial information about the local areas, such as their location, adjacency, or physical area. Spatial approaches

to traditional, non-local segregation metrics exist - such as centrality, spatially adjusted dissimilarity, and measures of spatial heterogeneity.(18,22,23,45) These approaches, however, are unsuitable for our goal of describing segregation on a local scale. There are proposals for a combined spatial and local segregation metric, but such approaches are technically challenging and have yet to be applied to health questions.(46) A major future direction for the field will be to integrate spatial knowledge into studies of segregation and health outcomes.

In conclusion, this study reveals the critical importance of measurement in research examining relationships between segregation and health outcomes. Findings varied widely depending on the metric used. These metrics have different interpretations and meanings. Future studies would benefit from incorporating multiple segregation measures. More work is necessary to identify relationships between local level segregation and other cancer outcomes, and to determine whether the relationships described here exist in other metropolitan areas. Finally, qualitative studies should complement this work to investigate how segregation is perceived by cancer patients and survivors and to identify potential mechanisms linking segregation to survival. Measures of racial residential segregation are important tools for better understanding cancer survival disparities, and this paper highlights the need for a cautious and systematic approach when investigating these relationships.

Acknowledgments

Financial Support: All authors received support from Research and Education Program Fund, a component of the Advancing a Healthier Wisconsin endowment at the Medical College of Wisconsin (AHW#: 5520316);

A. Bemanian received support from NIGMS T32-GM080202

References

1. Denton NA. Half Empty or Half Full: Segregation and Segregated Neighborhoods 30 Years After the Fair Housing Act. *Cityscape*. 1999; 4:107–22.
2. Massey DS, Rothwell J, Domina T. The Changing Bases of Segregation in the United States. *Ann Am Acad Pol Soc Sci* [Internet]. 2009; 626:74–90. Available from: <http://www.pubmedcentral.nih.gov/articlerender.fcgi?artid=3844132&tool=pmcentrez&rendertype=abstract>.
3. Frey, WH. Census Data: Blacks and Hispanics Take Different Segregation Paths. *Brookings* [Internet]. 2010. Available from: <http://www.brookings.edu/research/opinions/2010/12/16-census-frey>
4. Sudano JJ, Perzynski A, Wong DWS, Colabianchi N, Litaker D. Neighborhood racial residential segregation and changes in health or death among older adults. *Health Place* [Internet] Elsevier. 2013; 19:80–8. Available from: <http://dx.doi.org/10.1016/j.healthplace.2012.09.015>.
5. Williams, DR. Race, Socioeconomic Status, and Health: Added Effects of Racism and Discrimination. In: Adler, N.Marmot, M.McEwen, BS., Stewart, J., editors. *Socioeconomic Status and Health: Indicators and Pathways*. Ann Arbor, Michigan: New York Academy of Science; 1999. p. 173-88.
6. Alexander, M. *The New Jim Crow*. The New Press; 2012.
7. Sampson, RJ. *Great American City: Chicago and the Enduring Neighborhood Effect*. 2012.
8. Harper S, Rushani D, Kaufman JS. Trends in the Black-White Life Expectancy Gap, 2003–2008. *JAMA* [Internet]. 2012; 307:2257–9. Available from: <http://jama.jamanetwork.com/article.aspx?doi=10.1001/jama.2012.5059>.

9. CDC. Mortality Tables [Internet]. Natl Vital Stat System. 2015. [cited 2016 Jan 1]. Available from: http://www.cdc.gov/nchs/nvss/mortality_tables.htm
10. Collins, C., Williams, DR. Segregation and Mortality: The Deadly Effects of Racism [Internet]; Sociol Forum. 1999. p. 495-523.[cited 2015 Apr 30]Available from: http://deepblue.lib.umich.edu/bitstream/handle/2027.42/45655/11206_2004_Article_411172.pdf?sequence=1&isAllowed=y
11. Hayanga AJ, Zeliadt SB, Backhus LM. Lung cancer mortality and residential segregation in the United States. *J Am Coll Surg*. 2011; 213:S117.
12. Hunt BR, Whitman S, Hurlbert MS. Increasing Black: White disparities in breast cancer mortality in the 50 largest cities in the United States. *Cancer Epidemiol* [Internet] Elsevier Ltd. 2014; 38:118–23. Available from: <http://dx.doi.org/10.1016/j.canep.2013.09.009>.
13. Fast Stats: An interactive tool for access to SEER cancer statistics [Internet]. Surveill Res Program, Natl Cancer Inst. [cited 2016 Jan 1]. Available from: <http://seer.cancer.gov/faststats>
14. Whitman S, Ansell D, Orsi J, Francois T. The Racial Disparity in Breast Cancer Mortality. *J Community Health* [Internet]. 2011; 36:588–96. Available from: <http://link.springer.com/10.1007/s10900-010-9346-2>.
15. Mobley, LR., Subramanian, S., Tangka, FK., Hoover, S., Wang, J., Hall, JJ., et al. Breast Cancer Screening Among Women with Medicaid, 2006–2008: a Multilevel Analysis; *J Racial Ethn Heal Disparities* [Internet]. *Journal of Racial and Ethnic Health Disparities*. 2016. p. 2006-8. Available from: <http://link.springer.com/10.1007/s40615-016-0245-9>
16. Pruitt, SL., Lee, SJC., Tiro, Ja, Xuan, L., Ruiz, JM., Inrig, S. Residential racial segregation and mortality among black, white, and Hispanic urban breast cancer patients in Texas, 1995 to 2009. *Cancer* [Internet]. 2015. n/a-n/a. Available from: <http://doi.wiley.com/10.1002/cncr.29282>
17. Warner E, Gomez S. Impact of neighborhood racial composition and metropolitan residential segregation on disparities in breast cancer stage at diagnosis and survival between black and. *J Community Health* [Internet]. 2010; 35:398–408. [cited 2014 Jul 6]. Available from: <http://link.springer.com/article/10.1007/s10900-010-9265-2>.
18. Massey DS, Denton Na. The Dimensions of Residential Segregation. *Soc Forces* [Internet]. 1988; 67:281–315. Available from: <http://sf.oxfordjournals.org/content/67/2/281.abstract>.
19. Jakubs JF. Residential Segregation: The Taeuber Index Reconsidered. *J Reg Sci*. 1977; 17:281–3.
20. Wong DWS. Spatial Indices of Segregation. *Urban Stud* [Internet]. 1993; 30:559–72. Available from: <http://usj.sagepub.com/cgi/doi/10.1080/00420989320080551>.
21. Kramer, MR., Cooper, HL., Drews-Botsch, CD., Waller, La, Hogue, CR. *Soc Sci Med* [Internet]. Vol. 71. Elsevier Ltd; 2010. Metropolitan isolation segregation and Black-White disparities in very preterm birth: A test of mediating pathways and variance explained; p. 2108-16. Available from: <http://dx.doi.org/10.1016/j.socscimed.2010.09.011>
22. Morrill R. On the measure of geographical segregation. *Geogr Res forum*. 1991; 11:25–36.
23. Wong DWS. Implementing spatial segregation measures in GIS. *Comput Environ Urban Syst*. 2003; 27:53–70.
24. Wiecha JL, El Ayadi AM, Fuemmeler BF, Carter JE, Handler S, Johnson S, et al. Diffusion of an integrated health education program in an urban school system: Planet health. *J Pediatr Psychol*. 2004; 29:467–74. [PubMed: 15277589]
25. James, DR., Taeuber, KE. *Sociol Methodol*. 1985. Measures of Segregation; p. 1-32.
26. Theil H, Finizza AJ. A note on the measurement of racial integration of schools by means of informational concepts†. *J Math Sociol* [Internet]. 1971; 1:187–93. Available from: <http://www.tandfonline.com/doi/abs/10.1080/0022250X.1971.9989795>.
27. Lieberman, S. An Asymmetrical Approach to Segregation. In: Peach, C.Robinson, V., Smith, S., editors. *Ethn Segreg Cities*. Croom Helm; 1981. p. 61-82.
28. Krieger N, Singh N, Waterman PD. Metrics for monitoring cancer inequities: residential segregation, the Index of Concentration at the Extremes (ICE), and breast cancer estrogen receptor status (USA, 1992–2012). *Cancer Causes Control* [Internet] Springer International Publishing. 2016; 27:1139–51. Available from: <http://dx.doi.org/10.1007/s10552-016-0793-7>.
29. Johnston, R., Poulsen, M., Forrest, J. Segregation matters, measurement matters. In: Lloyd, C.Shuttleworth, I., Wong, DWS., editors. *Soc Segreg*. Bristol: Policy Press; 2014. p. 13-44.

30. Clark WAV, Anderson E, Östh J, Malmberg B. A Multiscalar Analysis of Neighborhood Composition in Los Angeles, 2000–2010: A Location-Based Approach to Segregation and Diversity. *Ann Assoc Am Geogr* [Internet]. 2015; 105:1260–84. Available from: <http://www.tandfonline.com/doi/full/10.1080/00045608.2015.1072790>.
31. Frey, WH. Analysis of 1990, 2000, and 2010 Census Decennial Census tract data [Internet]. Brookings Inst Univ Michigan Soc Sci Data Anal. 2010. [cited 2016 May 3]. Available from: <http://www.psc.isr.umich.edu/dis/census/segregation2010.html>
32. Cutler DM, Glaeser EL, Vigdor JL. When are ghettos bad? Lessons from immigrant segregation in the United States. *J Urban Econ*. 2008; 63:759–74.
33. Polednak AP. Poverty, residential segregation, and black/white mortality ratios in urban areas. *J Health Care Poor Underserved*. 1993; 4:363–73. [PubMed: 8260570]
34. Ihlanfeldt KR, Scafidi B. Black Self-Segregation as a Cause of Housing Segregation: Evidence from the Multi-City Study of Urban Inequality. *J Urban Econ* [Internet]. 2002; 51:366–90. Available from: <http://www.sciencedirect.com/science/article/pii/S0094119001922491>.
35. Beyer KMM, Zhou Y, Matthews K, Hoormann K, Bemanian A, Laud PW, et al. Breast and Colorectal Cancer Survival Disparities in Southeastern Wisconsin. *Wis Med J*. 2016; 115:17–22.
36. Osypuk TL, Acevedo-Garcia D. Beyond individual neighborhoods: A geography of opportunity perspective for understanding racial/ethnic health disparities. *Health Place* [Internet] Elsevier. 2010; 16:1113–23. Available from: <http://dx.doi.org/10.1016/j.healthplace.2010.07.002>.
37. US Census Bureau. Census 2010 [Internet]. Am FactFinder. 2010. Available from: <http://factfinder2.census.gov>
38. US Census Bureau. American Community Survey, 2008–2012 5-Year Estimates [Internet]. Am FactFinder. 2012. Available from: <http://factfinder2.census.gov>
39. US Census Bureau. Census 2000. 2000.
40. Team RC. R: A Language and Environment for Statistical Computing [Internet]. Vienna, Austria: R Foundation for Statistical Computing; 2015. Available from: <http://www.r-project.org/>
41. Yoo W, Mayberry R, Bae S, Singh K, He Q, Lillard J Jr. A study of effects of multicollinearity in the multivariable analysis. ... *J Appl ...* [Internet]. 2014; 4:9. Available from: <http://www.ncbi.nlm.nih.gov/pmc/articles/PMC4318006/>.
42. Gibbons J, Yang TC. Self-rated health and residential segregation: How does race/ethnicity matter? *J Urban Heal*. 2014; 91:648–60.
43. Stafford, M., Bécares, L., Nazroo, J. *Ethn Integr* [Internet]. Dordrecht: Springer Netherlands; 2010. Racial Discrimination and Health: Exploring the Possible Protective Effects of Ethnic Density; p. 225-50. Available from: http://link.springer.com/10.1007/978-90-481-9103-1_11
44. Tolnay SE. The African American “Great Migration” and Beyond. *Annu Rev Sociol* [Internet]. 2003; 29:209–32. Available from: <http://www.annualreviews.org/doi/abs/10.1146/annurev.soc.29.010202.100009>.
45. Ben, Wu X., Sui, DZ. An initial exploration of a lacunarity-based segregation measure. *Environ Plan B Plan Des*. 2001; 28:433–46.
46. O’Sullivan D, Wong DWS. A surface-based approach to measuring spatial segregation. *Geogr Anal*. 2007; 39:147–68.

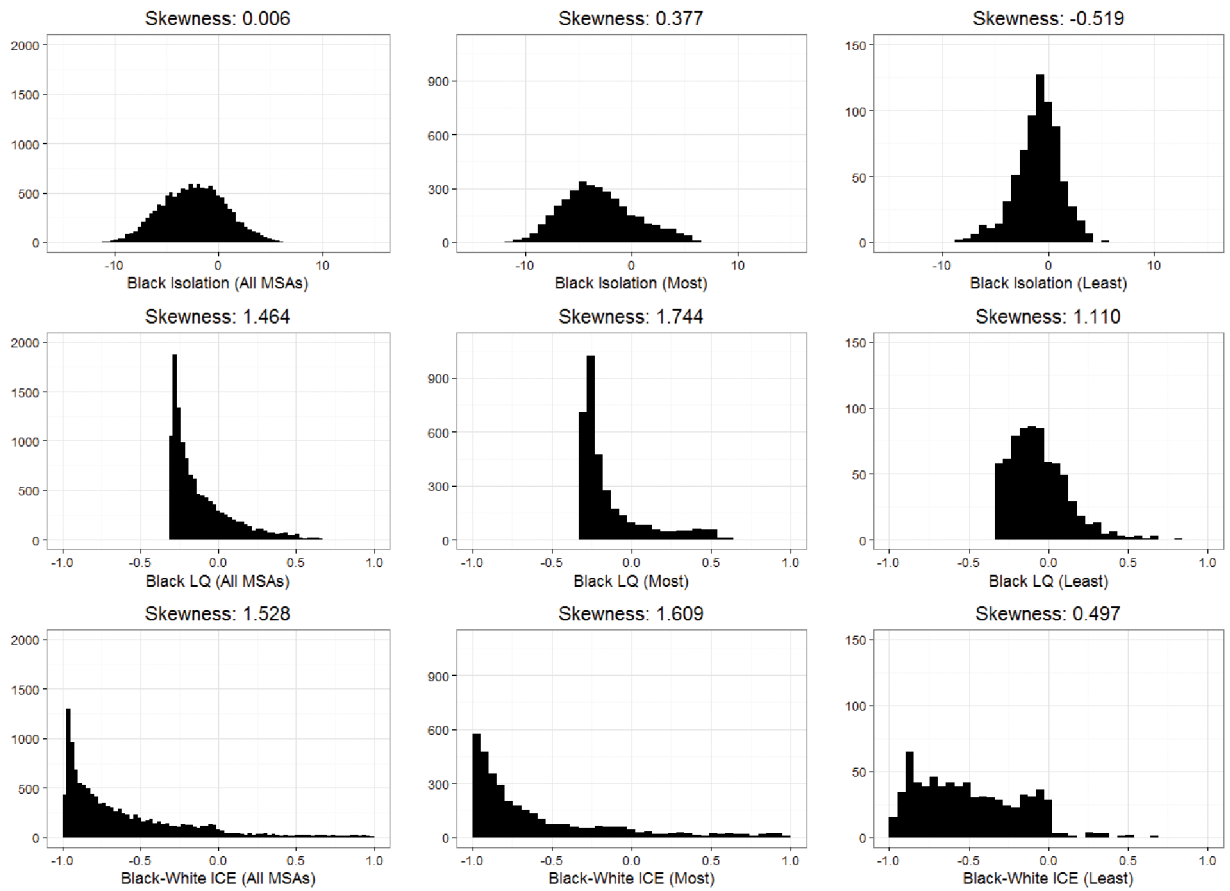


Figure 1. Comparisons of the distribution of ZCTA level Black segregation indices in the 102 largest MSAs in the US (left column), the 15 most Black-White segregated of those MSAs (middle column), and the 15 least segregated (right column)

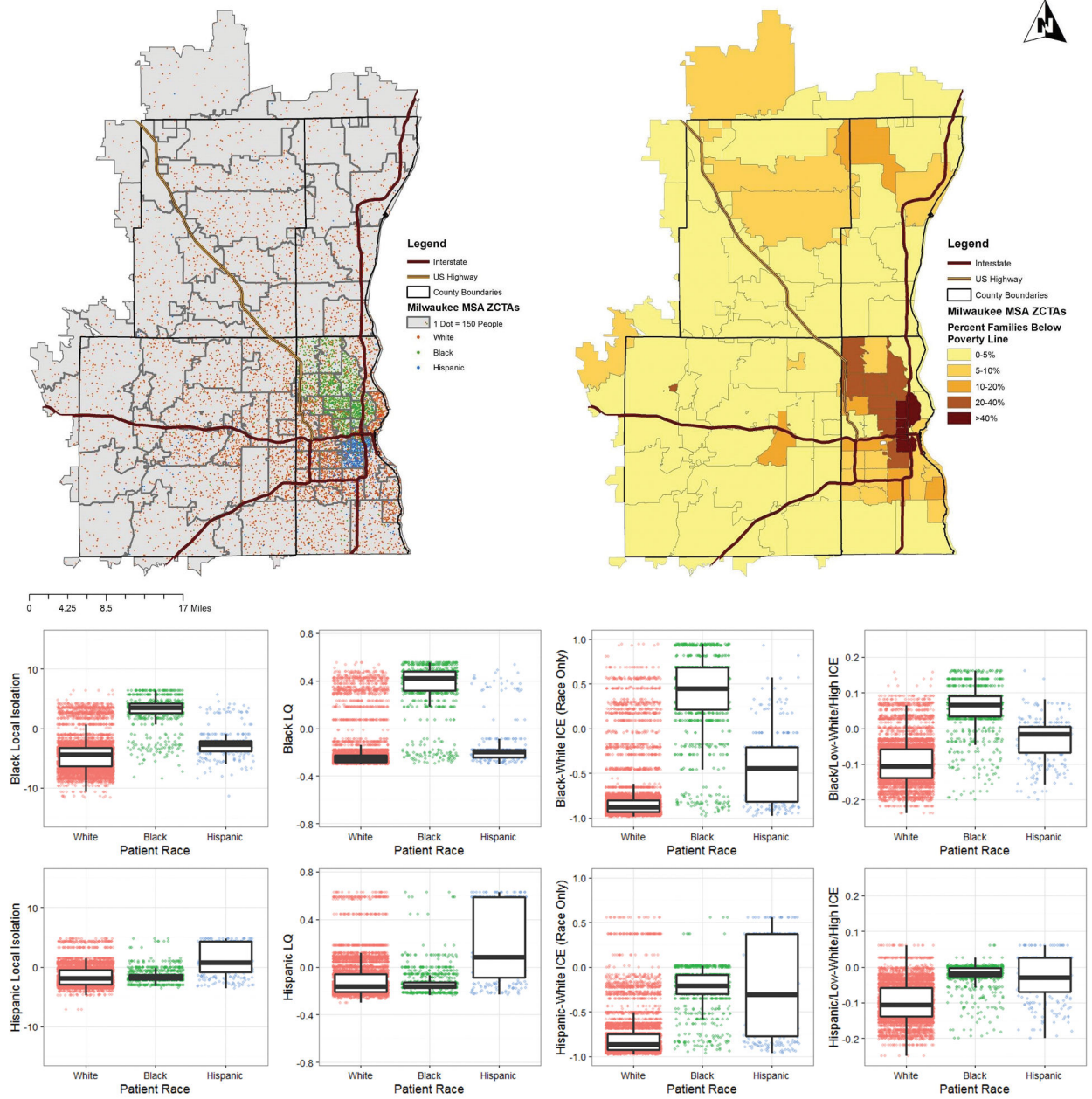


Figure 2.

TOP: Maps of Milwaukee-Waukesha-West Allis, WI MSA. TOP LEFT: Dot map of racial distribution in study area by ZCTA. TOP RIGHT: Percent households below poverty line in study area by ZCTA. BOTTOM: Jittered distribution of patients by race for each segregation index. Top row is Black segregation indices, bottom row is Hispanic segregation indices. Columns from left to right are: local isolation, LQ, ICE (uncontrolled for income), ICE (controlled for income). Boxes correspond to the 1st to 3rd quartiles of each race’s distribution. Whiskers extend to 1.5-times the inter-quartile range.

Patient demographics for breast cancer cases from the WCRS. First row percentages are percent of total number of patients. All other percentages are calculated within race. *p*-value calculated for chi-squared test for differences between races

Table 1

	Black (n)	%	White (n)	%	Hispanic (n)	%	All (n)	%	p
Count	940	11.25%	7164	85.73%	252	3.02%	8356	100%	-
Deceased	215	22.87%	1153	16.09%	33	13.10%	1401	16.77%	<0.001
Breast-specific	148	15.74%	602	8.40%	22	8.73%	772	9.24%	<0.001
Cancer Stage Localized	468	49.79%	4658	65.02%	151	59.92%	5277	63.15%	<0.001
Regional or Distant	472	50.21%	2506	34.98%	101	40.08%	3079	36.85%	
Age 18-44	196	20.85%	845	11.80%	73	28.97%	1114	13.33%	<0.001
45-54	281	29.89%	1643	22.93%	81	32.14%	2005	23.99%	
55-64	209	22.23%	1684	23.51%	48	19.05%	1941	23.23%	
65-74	136	14.47%	1390	19.40%	33	13.10%	1559	18.66%	
75+	118	12.55%	1602	22.36%	17	6.75%	1737	20.79%	
ZCTA >20% below poverty	644	68.51%	458	6.39%	106	42.06%	1208	14.46%	<0.001
ZCTA Majority Race Black	731	77.77%	407	5.68%	26	10.32%	1164	13.93%	<0.001
White	126	13.40%	6503	90.77%	124	49.21%	6753	80.82%	
Hispanic	8	0.85%	92	1.28%	68	26.98%	168	2.01%	
No majority	75	7.97%	162	2.26%	34	13.49%	271	3.24%	

Table 2

Models for all-cause survival and breast cancer specific survival fitted with and without inclusion of ZCTA SES data. All models were adjusted for patient race, age, and stage. Models 1.1a, 1.2a, 1.3a, 1.4a controlled for ZCTA poverty level. Bolded indicates significance at 95% confidence ($p < 0.05$).

	Model 1.1a: Isolation & Poverty	Model 1.1b: Isolation only	Model 1.2a: Exposure & Poverty	Model 1.2b: Exposure only	Model 1.3a: Full LEx/Is & Poverty	Model 1.3b: Full LEx/Is only	Model 1.4a: LQ & Poverty	Model 1.4b: LQ only	Model 1.5a: ICE with Race & Income	Model 1.5b: ICE with Race (No Income)
	HR (95% CI)	HR (95% CI)	HR (95% CI)	HR (95% CI)	HR (95% CI)	HR (95% CI)	HR (95% CI)	HR (95% CI)	HR (95% CI)	HR (95% CI)
All Cause Survival										
Black Segregation	0.99 (0.97,1.01)	1.00 (0.98,1.02)	-	-	0.87 (0.71,1.07)	0.97 (0.81,1.17)	0.77 (0.55,1.09)	0.99 (0.74,1.33)	0.32 (0.03,3.74)	0.66 (0.49,0.89)
Hispanic Segregation	1.04 (1.01,1.08)	1.05 (1.01,1.09)	-	-	0.91 (0.73,1.14)	1.02 (0.83,1.25)	1.40 (0.97,2.14)	1.73 (1.21,2.47)	184.9 (1.03,475.9)	2.29 (1.49,3.48)
Black-Hispanic Exposure (LEx/Is only)	-	-	1.01 (0.98,1.04)	1.03 [‡] (1.00,1.07)	1.29 (0.85,1.96)	1.07 (0.72,1.57)	-	-	-	-
Breast Cancer Specific Survival										
Black Segregation	0.98 (0.95,1.01)	1.00 (0.97,1.02)	-	-	1.01 (0.78,1.29)	1.12 (0.90,1.39)	0.68 (0.42,1.10)	0.95 (0.64,1.41)	0.511 (0.02,13.8)	0.65 (0.44,0.94)
Hispanic Segregation	1.03 (0.98,1.08)	1.04 [‡] (0.99,1.09)	-	-	1.06 (0.80,1.40)	1.19 (0.92,1.52)	1.32 (0.79,2.19)	1.72 (1.08,2.47)	9.39 (0.13,640.9)	2.43 (1.43,4.10)
Black-Hispanic Exposure (LEx/Is only)	-	-	1.01 (0.95,1.04)	1.02 (0.98,1.06)	0.95 (0.56,1.60)	0.77 (0.49,1.24)	-	-	-	-

[‡]: indicates $p < 0.10$.

Note: segregation hazard ratio magnitude cannot be directly compared across models with different metrics, due to differences in unit definition.

Table 3

Patient race-specific survival models controlling for the effects of ZCTA poverty and patient age and stage. Bolded indicates significance at 95% confidence.

	Model 3.1: Local Isolation		Model 3.2: LQ	
	All Cause	Breast Ca. Specific	All Cause	Breast Ca. Specific
	HR (95% CI)	HR (95% CI)	HR (95% CI)	HR (95% CI)
White Patients (n = 7164)				
Black Segregation	0.99 (0.97,1.02)	0.98 (0.95,1.01)	0.86 (0.59,1.24)	0.69 (0.39,1.20)
Hispanic Segregation	1.04 [‡] (1.00,1.08)	1.04 (0.98,1.09)	1.43 [‡] (0.96,2.14)	1.47 (0.84,2.57)
Black Patients (n = 940)				
Black Segregation	0.91 (0.85,0.98)	0.91 (0.83,1.00)	0.37 (0.14,0.92)	0.35 (0.11,1.11)
Hispanic Segregation	0.98 (0.86,1.11)	0.91 (0.78,1.07)	0.88 (0.21,3.80)	0.49 (0.08,3.07)
Hispanic Patients (n = 252)				
Black Segregation	1.12 (0.92,1.35)	1.16 (0.93,1.44)	3.52 (0.24,52.0)	3.70 (0.21,66.4)
Hispanic Segregation	1.02 (0.83,1.25)	1.04 (0.83,1.30)	1.08 (0.16,7.43)	1.20 (0.15,9.58)

[‡] indicates $p < 0.10$.

Note: segregation hazard ratio magnitude cannot be directly compared across isolation and LQ models, due to differences in unit definition.