

SCIENTIFIC REPORTS



OPEN

The Phosphatidylcholine Transfer Protein Stard7 is Required for Mitochondrial and Epithelial Cell Homeostasis

Received: 10 October 2016

Accepted: 15 March 2017

Published: 12 April 2017

Li Yang¹, Cheng-Lun Na¹, Shiyu Luo², David Wu³, Simon Hogan³, Taosheng Huang² & Timothy E. Weaver¹

Mitochondria synthesize select phospholipids but lack the machinery for synthesis of the most abundant mitochondrial phospholipid, phosphatidylcholine (PC). Although the phospholipid transfer protein Stard7 promotes uptake of PC by mitochondria, the importance of this pathway for mitochondrial and cellular homeostasis represents a significant knowledge gap. Haploinsufficiency for Stard7 is associated with significant exacerbation of allergic airway disease in mice, including an increase in epithelial barrier permeability. To test the hypothesis that Stard7 deficiency leads to altered barrier structure/function downstream of mitochondrial dysfunction, Stard7 expression was knocked down in a bronchiolar epithelial cell line (BEAS-2B) and specifically deleted in lung epithelial cells of mice (Stard7^{epi Δ}). Stard7 deficiency was associated with altered mitochondrial size and membrane organization both *in vitro* and *in vivo*. Altered mitochondrial structure was accompanied by disruption of mitochondrial homeostasis, including decreased aerobic respiration, increased oxidant stress, and mitochondrial DNA damage that, in turn, was linked to altered barrier integrity and function. Both mitochondrial and barrier defects were largely corrected by targeting Stard7 to mitochondria or treating epithelial cells with a mitochondrial-targeted antioxidant. These studies suggest that Stard7-mediated transfer of PC is crucial for mitochondrial homeostasis and that mitochondrial dysfunction contributes to altered barrier permeability in Stard7-deficient mice.

The mechanism(s) by which newly synthesized phospholipids are transferred from the ER through an aqueous environment to a specific target membrane is poorly understood. The Steroidogenic acute regulatory protein (StAR)-related lipid transfer (START) domain is a ~210 amino acid module that binds and transfers lipid molecules between donor and acceptor membranes^{1,2}. There are 15 mammalian proteins that contain a START domain, including a subfamily of 4 proteins that preferentially transfers ceramide (Stard11) or phosphatidylcholine (Stard2/PC-TP, Stard10, and Stard7). Stard7, the focus of this study, was originally detected in a choriocarcinoma cell line (JEG-3) and subsequently in a range of tumor cell lines, as well as normal cells/tissues^{3,4}. Knockdown of Stard7 was associated with altered trophoblast cell behavior, including decreased cell migration, proliferation, intercellular desmosomes, and phospholipid synthesis⁵; in addition, Stard7 knockdown in HepG2 cells was associated with ER stress, increased reactive oxygen species (ROS) and altered mitochondrial morphology⁶. Importantly, Stard7 was shown to specifically transfer PC to mitochondria⁷, raising the possibility that many of the cellular phenotypes associated with loss of Stard7 expression may be downstream of mitochondrial dysfunction.

The Stard7 mRNA transcript encodes a protein, Stard7-1, that contains a mitochondrial targeting sequence (MTS)⁷. Cleavage of the NH₂-terminal domain containing the MTS yields Stard7-2, an isoform that also binds/transfers phosphatidylcholine (PC). Horibata and Sugimoto⁷ reported that Stard7-1, but not Stard7-2, facilitated transfer of PC to mitochondria in HEPA-1 cells and, recently, demonstrated that Stard7 is important for

¹Perinatal Institute, Division of Neonatology, Perinatal and Pulmonary Biology, Cincinnati Children's Hospital Medical Center, Cincinnati, OH, 45229-3039, USA. ²Division of Human Genetics, Cincinnati Children's Hospital Medical Center, Cincinnati, OH, 45229-3039, USA. ³Division of Allergy and Immunology, Cincinnati Children's Hospital Medical Center, Cincinnati, OH, 45229-3039, USA. Correspondence and requests for materials should be addressed to T.E.W. (email: tim.weaver@cchmc.org)

mitochondrial homeostasis⁸. Mitochondria can synthesize specific phospholipids, including phosphatidylglycerol, phosphatidylethanolamine (PE), and cardiolipin, but lack the enzymatic machinery to synthesize PC via the *de novo* or remodeling pathways^{9,10}. PC is the major phospholipid species in mitochondria, comprising up to 45% of total mitochondrial phospholipids; further, PC is the major donor of linoleic acid for remodeling of cardiolipin¹¹, a phospholipid dimer required for mitochondrial membrane organization and function of enzymes involved in oxidative phosphorylation¹². Thus, import of PC, via transfer proteins or other processes such as membrane contacts¹³, is critical for mitochondrial function and homeostasis; yet little is known about the mechanism(s) underlying mitochondrial PC import or the impact of individual PC transfer pathways on cellular homeostasis and organ function.

To begin to address this knowledge gap, we generated global knockout mice for *Stard7*¹⁴. *Stard7*^{-/-} mice died at E11 while *Stard7*^{+/-} mice survived and were fertile. Unexpectedly, approximately 30% of adult *Stard7*^{+/-} mice developed pruritic skin lesions associated with marked Th2 inflammation and elevated IgE; moreover, *Stard7*^{+/-} mice mounted an exaggerated allergic airway response following allergen sensitization and challenge¹⁴. These results suggest that *Stard7* is an important component of a novel protective pathway that modulates allergic responses at critical mucosal-environmental interfaces. In support of this hypothesis, *Stard7* expression was decreased by 50% in the nasal epithelia of human patients with an acute asthma exacerbation^{14,15}. Whether the pathogenesis of allergic airway disease is causally linked to mitochondrial dysfunction in *Stard7*-deficient cells remains unknown.

As much as 20% of the world's population is affected by allergic disease¹⁶. Allergic asthma is a chronic inflammatory disorder characterized by infiltration of Th2 cells and eosinophils, increased mucus production and bronchial hyperresponsiveness¹⁷. It has been proposed that asthma is primarily a defect of epithelial barrier function that allows greater access of environmental allergens, microorganisms, and toxicants to airway tissues^{18,19}. Importantly mitochondrial dysfunction, oxidative stress, and impaired barrier function have all been linked to asthma pathogenesis^{20–24}. In this study, we tested the hypothesis that deficiency of *Stard7* in airway epithelial cells perturbs mitochondrial homeostasis and that this event is linked to an increase in airway epithelial barrier permeability.

Results

Mitochondrial structure is altered in *Stard7*-deficient cells. Haploinsufficiency for *Stard7* is associated with significant exacerbation of allergic airway disease, including increased airway epithelial barrier permeability¹⁴. Since a likely function for *Stard7* involves targeted transport of PC to mitochondria⁷, the current study was designed to determine if *Stard7* deficiency leads to mitochondrial dysfunction that, in turn, leads to altered barrier structure/function in *Stard7*-deficient mice. Expression of the two *Stard7* isoforms, *Stard7*-1 and *Stard7*-2⁴, was first assessed in normal human bronchial epithelial cells immortalized with SV40T antigen (BEAS-2B cells). Western blotting of BEAS-2B cell lysates detected endogenous *Stard7* as a band migrating with Mr~34 k, consistent with the predicted mass of *Stard7*-2 (Fig. S1a). Following transfection of BEAS-2B cells with *Stard7* shRNAs, two cell lines were identified in which both *Stard7* mRNA and protein were decreased by > 90%. Transient transfection of knockdown cells (shRNA-1 cell line), with a shRNA-resistant construct encoding HA-tagged *Stard7*-1, demonstrated that most *Stard7*-1 protein (Mr~43 k) was converted to the smaller *Stard7*-2 isoform (Fig. S1b). Inhibition of mitochondrial function by CCCP resulted in a prominent increase in *Stard7*-1 and a decrease in *Stard7*-2. These results in BEAS-2B cells confirm similar findings in HEPA-1 cells and support the previously proposed model in which *Stard7*-1 is targeted to mitochondria, where the NH₂-terminal peptide of ~75 residues is rapidly cleaved to generate *Stard7*-2⁷.

The effect of *Stard7* deficiency on mitochondrial structure was assessed by analyses of BEAS-2B control (untransfected) and knockdown cells. Cristae were readily detected by transmission electron microscopy (TEM) in most mitochondria of control BEAS-2B cells but were less frequently observed in *Stard7*-deficient (shRNA-1 knockdown) cells (Fig. 1a), similar to recent findings in two liver cell lines^{6,8}. To assess the impact of *Stard7* deficiency on mitochondrial size, confocal images of control and knockdown cells were subjected to morphometric analysis of Tomm22⁺ compartments (Fig. 1b). Loss of *Stard7* expression was associated with a significant increase in the number of mitochondria with surface area <0.5 μm², *p* = 0.0045 (Fig. 1b). Mitochondrial membrane potential was assessed by staining control and knockdown cells with DiI C₁(5) (MitoProbe) followed by flow cytometry (Fig. 1c). Accumulation of membrane-sensitive dye was decreased in knockdown cells, consistent with fewer mitochondria with active membrane potentials. Transfection of *Stard7*-1 resulted in partial correction of mitochondrial membrane potential whereas transfection of *Stard7*-2 did not significantly alter membrane potential. Altogether, mitochondrial size, membrane organization, and membrane potential were altered in *Stard7*-deficient BEAS-2B cells.

Mitochondrial respiration is perturbed in *Stard7*-deficient cells. The potential importance of *Stard7* for mitochondrial respiration was assessed by measuring the oxygen consumption rate (OCR) in control and knockdown cells, using the Seahorse Extracellular Flux (XF24) Analyzer (Fig. 2a). *Stard7* deficiency resulted in a decrease in baseline respiration that was partially restored by transient transfection of *Stard7*-1 but not *Stard7*-2. Maximal respiration was also affected in knockdown cells, resulting in a dramatic decrease in spare respiratory capacity that was partially rescued by *Stard7*-1, similar to recent findings in HEPA-1 cells⁸. Incomplete rescue of basal and maximal respiration by *Stard7*-1 (as well as mitochondrial membrane potential, Fig. 1c) is likely related to transfection efficiency of ~50% in these experiments. Since *Stard7*-1 contains a mitochondrial targeting sequence (MTS) that is not present in *Stard7*-2, these results are consistent with the conclusion that mitochondrial targeting of *Stard7* is critical for maintenance of mitochondrial respiration.

The primary function of mitochondria is the production of ATP. Decreased mitochondrial respiration in *Stard7*-deficient cells was unexpectedly associated with an increase in cellular ATP concentration (Fig. 2b).

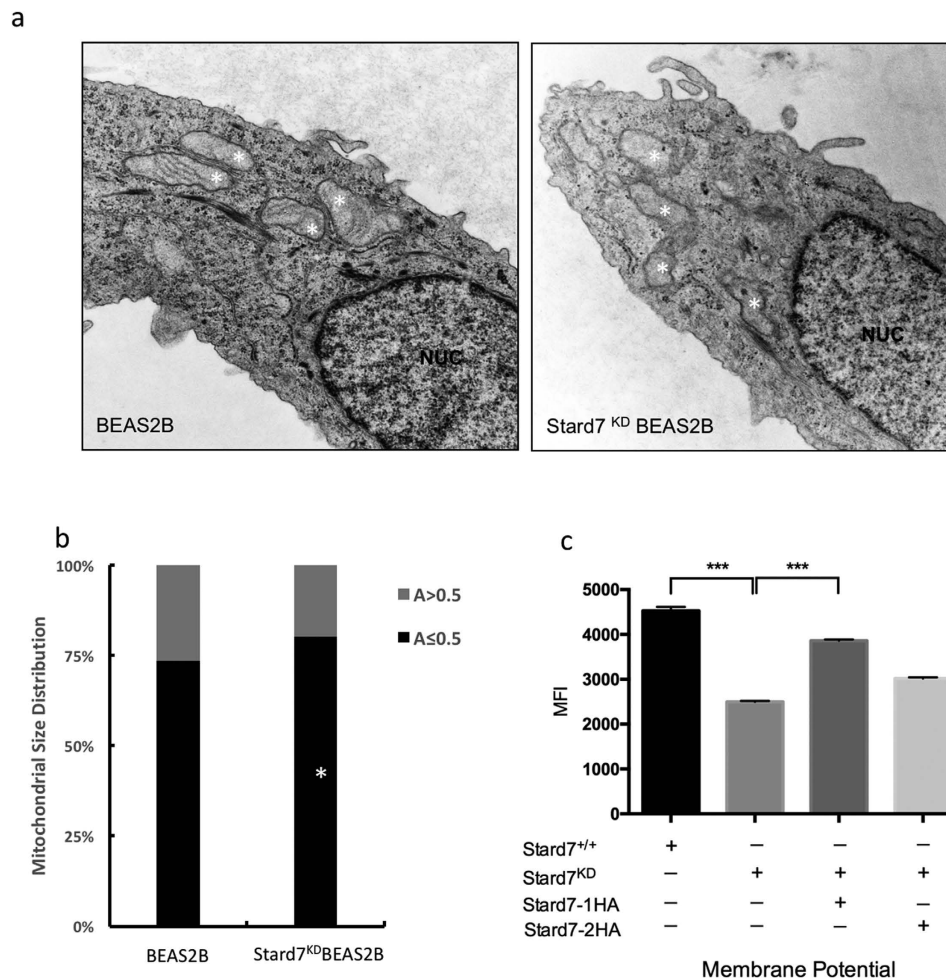


Figure 1. Stard7 deficiency is associated with altered mitochondrial structure in BEAS-2B cells. (a) Transmission electron microscopy of BEAS-2B and Stard7^{KD}BEAS-2B cells detected smaller mitochondria and poorly defined cristae in knockdown cells compared to WT cells. NUC: nucleus. **(b)** Images of mitochondria labeled by TOMM22 antibody were collected from BEAS-2B ($n = 47$) and Stard7^{KD}BEAS-2B cells ($n = 48$) for morphometric analyses of surface area (A). Stard7^{KD}BEAS-2B cells had higher than expected numbers of smaller mitochondria ($A \leq 0.5 \mu\text{m}^2$) compared to BEAS-2B cells ($*p = 0.0045$). **(c)** Mitochondrial membrane potential ($\Delta\psi\text{m}$) was assessed after incubation with or without DiI_{C1}(5) for 30 minutes followed by flow cytometry. Stard7 deficiency was associated with decreased $\Delta\psi\text{m}$. BEAS-2B cells vs. Stard7^{KD}BEAS-2B cells, $***p < 0.0001$. Transient transfection of Stard7^{KD}BEAS-2B cells with Stard7-1HA partially restored $\Delta\psi\text{m}$. Stard7^{KD}BEAS-2B/Stard7-1HA vs. Stard7^{KD}BEAS-2B cells, $***p < 0.0001$. MFI, mean fluorescence intensity.

Inhibition of ATPase synthase (oligomycin treatment) resulted in decreased cellular ATP in WT BEAS-2B cells but not in knockdown cells, consistent with elevated non-mitochondrial respiration in the absence of Stard7 (Fig. 2b), similar to results in HEPA-1 cells⁸. Inhibition of glyceraldehyde-3-phosphate dehydrogenase (3-bromopyruvate treatment) depleted ATP content in both WT and knockdown cells (Fig. 2b). These results confirm that glycolysis contributes to maintenance of ATP levels in Stard7-deficient cells.

Stard7 deficiency is associated with increased ROS and mtDNA damage. Altered mitochondrial homeostasis can result in increased generation of ROS and mtDNA damage, in addition to other pathologic changes. To determine if Stard7-deficiency was associated with altered generation of ROS, control and knockdown cells were incubated with 2',7'-dichlorofluorescein diacetate (DCFDA), which is deacetylated to a non-fluorescent compound by cellular esterases. Generation of ROS results in oxidation to highly fluorescent 2',7'-dichlorofluorescein (DCF) that can be detected by flow cytometry. Basal ROS were significantly elevated in knockdown cells compared to control cells (Fig. 3a). Oxidant challenge with tert-butyl hydroperoxide (TBHP) resulted in elevated ROS in both control and knockdown cells, although oxidant burden was significantly higher in Stard7-deficient cells. Transfection of knockdown cells with Stard7-1, but not Stard7-2, decreased ROS to levels comparable to those in control cells (Fig. 3b). Excessive accumulation of ROS can damage mitochondrial DNA leading to changes in mitochondrial DNA conformation and gene expression. Mitochondrial DNA exists primarily in a supercoiled conformation that is a relatively poor template for DNA amplification²⁵; oxidative

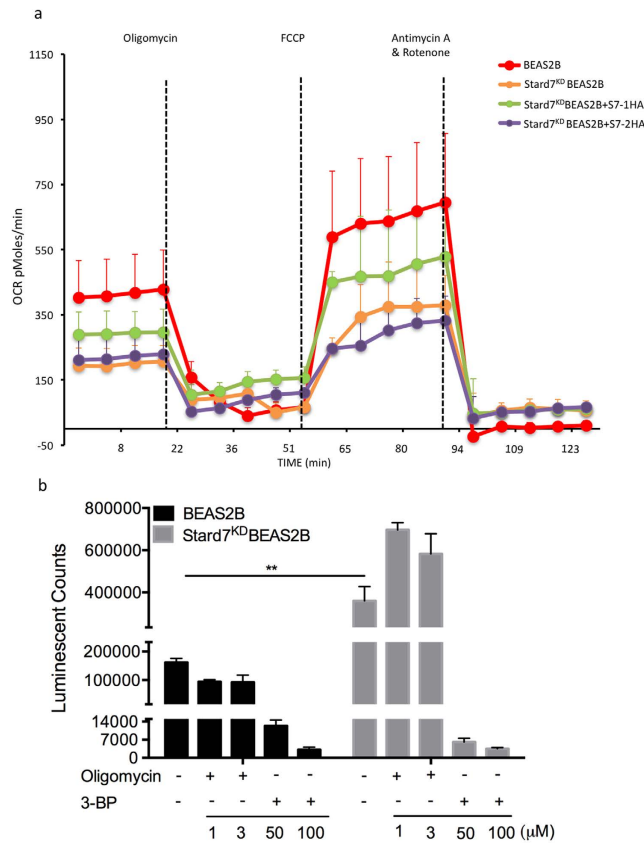


Figure 2. Stard7 deficiency is associated with altered mitochondrial function. (a) Mitochondrial OCR (pMoles/min) was measured under basal conditions and in response to the indicated mitochondrial inhibitors. The OCR was lower in Stard7^{KD}BEAS-2B cells. Transient transfection of Stard7^{KD}BEAS-2B cells with Stard7-1HA partially restored OCR (mean \pm SEM, $n = 5$). (b) BEAS-2B and Stard7^{KD}BEAS-2B cells were treated with or without the indicated concentration of 3-BP or oligomycin for one hour and cellular ATP levels were determined. Data represent the averages of three independent experiments (mean \pm SEM). BEAS-2B cells vs. Stard7^{KD}BEAS-2B cells, ** $p = 0.0078$. OCR: oxygen consumption rate. FCCP: carbonyl cyanide p-trifluoromethoxyphenylhydrazine. 3-BP: 3-bromopyruvate.

damage results in strand breaks and a relaxed DNA structure that is a better substrate for PCR. Results of qPCR analyses for 3 mitochondrial genes (16S RNA, tRNA, and Cox4) in control and knockdown cells indicated that Stard7 deficiency was associated with a significant increase in copy number for all 3 mitochondrial gene targets (Fig. 3c). Treatment with H₂O₂ significantly increased DNA amplification in control cells as expected but, with the exception of Cox4, only modestly increased DNA amplification in knockdown cells. Moreover, expression of an oxidant-sensitive gene, interferon alpha inducible protein 27 (IFI27), was dramatically downregulated in knockdown cells and upregulated in response to treatment with the mitochondrial-targeted antioxidant, MitoTEMPO (Fig. 3d). These findings suggest that Stard7 deficiency leads to elevated mitochondrial ROS that, in turn, results in significant perturbation of mitochondrial DNA structure. In support of this hypothesis, sequencing of the mitochondrial genome confirmed that oxidative stress in Stard7-deficient cells was associated with an increase in sequence variations compared to WT BEAS-2B cells (Table 1).

Paracellular permeability is increased following Stard7 knockdown. We next assessed the effect of Stard7 deficiency on epithelial barrier permeability. Confluent cultures of BEAS-2B cells undergo squamous differentiation to form a selectively permeable epithelial monolayer in culture. Transepithelial resistance (TEER) was significantly decreased and paracellular permeability to FITC-dextran was increased in monolayers of knockdown cells compared to control cells (Fig. 4a); further, cell-cell adhesion, as visualized by staining for E-cadherin (Fig. 4b), was disrupted in knockdown cells. Consistent with a leaky monolayer, expression of the tight junction proteins claudin-1, claudin-4 and ZO-1 was decreased in Stard7-deficient cells (Fig. 4c). Importantly, treatment of knockdown cells with a mitochondrial-targeted antioxidant, MitoTEMPO, substantially restored E-cadherin expression (Fig. 4b) as well as claudin-1, claudin-4 and ZO-1 expression (Fig. 4c). Collectively, analyses in BEAS-2B cells suggest a model in which loss of Stard7 expression leads to mitochondrial dysfunction and oxidative stress that, in turn, promotes increased epithelial barrier permeability.

Targeted deletion of Stard7 in lung epithelial cells is associated with altered mitochondrial structure and function *in vivo*. As a first step toward evaluating Stard7 function *in vivo*, we generated

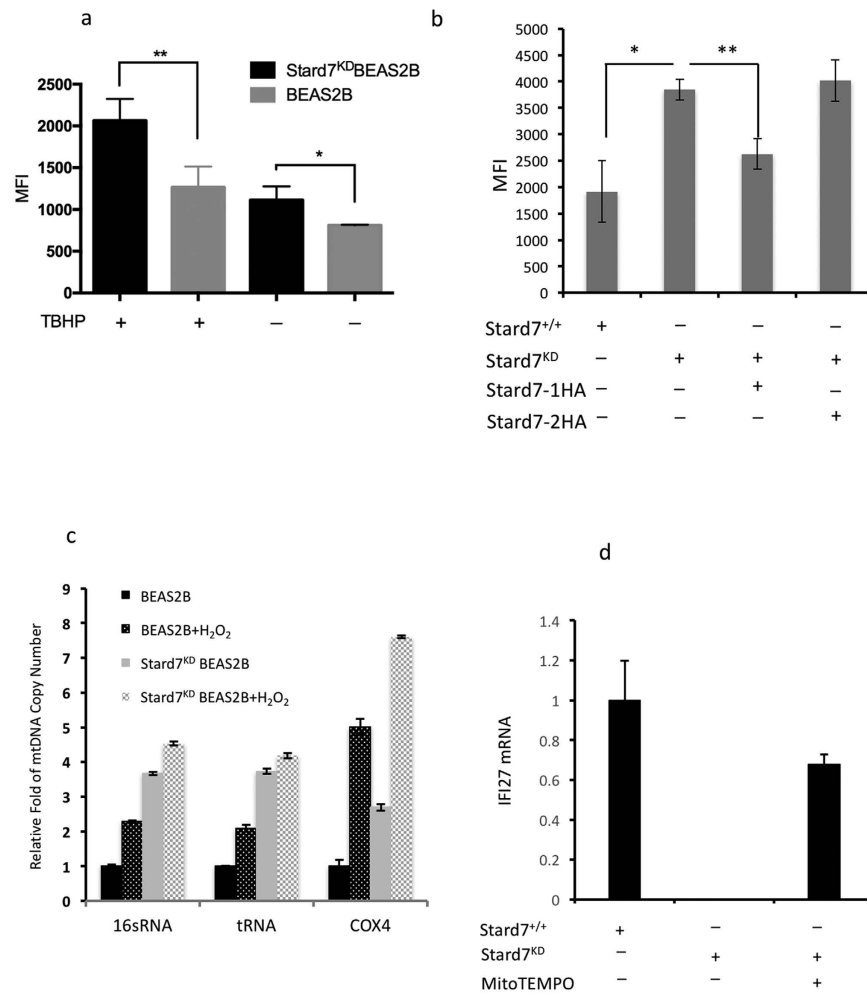


Figure 3. Stard7 deficiency leads to excessive generation of ROS and mitochondrial DNA damage. (a) BEAS-2B and Stard7^{KD}BEAS-2B cells were incubated with or without DCFDA (20 μ M) and/or TBHP (25 μ M) to induce oxidant stress and cultured for 3 hours. ROS were analyzed by flow cytometry. Data are expressed as MFI (mean \pm SEM, $n = 3$); * $p = 0.032$, BEAS-2B cells vs. Stard7^{KD}BEAS-2B cells; ** $p = 0.0186$, TBHP-treated BEAS-2B cells vs. TBHP-treated Stard7^{KD}BEAS-2B cells. **(b)** Knockdown cells were transiently transfected with Stard7-1HA or Stard7-2HA and ROS levels assessed as described in panel a. * $p = 0.0111$, Stard7^{KD}BEAS-2B cells vs. BEAS-2B cells; ** $p = 0.0072$, Stard7-1HA transfected Stard7^{KD}BEAS-2B cells vs. Stard7^{KD}BEAS-2B cells. **(c)** Relative mitochondrial DNA copy numbers were determined by qRT-PCR using primers for mitochondrial genes (16 sRNA, tRNA and Cox4) or a nuclear gene (actin). **(d)** Expression of the oxidant-sensitive gene interferon alpha inducible protein 27 (IFI27) was assessed in BEAS-2B and Stard7^{KD}BEAS-2B cells by qRT-PCR before and after treatment with MitoTEMPO. MFI: mean fluorescent intensity, DCFDA: dichlorofluorescein diacetate; TBHP: tert-butyl Hydroperoxide.

Stard7^{fl/fl} mice and crossed them to Shh-Cre driver mice to generate animals with targeted deletion of Stard7 in epithelial cells of the lung (Stard7^{epi Δ / Δ} , Fig. S2). Loss of Stard7 expression in lung epithelial cells was confirmed by immunocytochemistry (Fig. S3). Ultrastructural analyses of airway epithelial cells detected lipid inclusions and mitochondria with decreased numbers of cristae in the subapical region of ciliated cells of Stard7^{epi Δ / Δ} mice compared to Stard7^{fl/fl} controls (Fig. S4). Higher power magnification revealed multiple mitochondrial abnormalities in Stard7-deficient cells, including lipid accumulation juxtaposed to the outer mitochondrial membrane (Fig. 5a, white arrows), formation of mitochondrial blebs (Fig. 5a, black arrows) and isolation membrane (Fig. 5a, arrowhead), and autophagosomes containing mitochondrial fragments (Fig. 5a, asterisk). Morphometric analyses of mitochondria in ciliated bronchiolar cells from Stard7^{fl/fl} and Stard7^{epi Δ / Δ} mice identified a >60% decrease in the surface area ratio of cristae in Stard7-deficient cells (Fig. 5b). These results indicate that targeted disruption of Stard7 expression in lung epithelial cells *in vivo* leads to profound changes in mitochondrial morphology.

To determine if altered mitochondrial structure was accompanied by changes in function, epithelial cells were isolated from lungs of Stard7^{fl/fl} and Stard7^{epi Δ / Δ} mice and subjected to mitochondrial stress test. Both resting and maximal respiration were decreased in Stard7-deficient cells (Fig. 6a) but cellular ATP content was maintained (Fig. 6b). Analyses of cellular ROS in isolated lung epithelial cells revealed increased oxidative stress in cells from Stard7^{epi Δ / Δ} mice compared to Stard7^{fl/fl} control mice (Fig. 6c). Taken together, these results indicate that targeted

Nucleoid Position	Gene	Mutation Call	Heteroplasmy %
3992	NADH-ubiquinone oxidoreductase chain 1	c.686C > CT	49.06
4024	NADH-ubiquinone oxidoreductase chain 1	c.718A > AG	49.06
4587	NADH-ubiquinone oxidoreductase chain 2	c.118T > CT	46.88
5004	NADH-ubiquinone oxidoreductase chain 2	c.535T > CT	48.48
8269	Cytochrome oxidase II	c.684G > AG	51.85
9123	ATP synthase F0 subunit 6	c.597G > AG	53.12
10044	tRNA glycine	IVS1-15A > AG	50
12618	NADH dehydrogenase subunit 5	c.282G > AG	11.11
13105	NADH dehydrogenase subunit 5	c.769A > AG	46.43
13947	NADH dehydrogenase subunit 5	c.1611C > AC	9.01
14365	NADH dehydrogenase subunit 6	c.309C > CT	50
14582	NADH dehydrogenase subunit 6	c.92T > TC	47.37

Table 1. Mitochondrial DNA Mutations in Stard7^{KD}BEAS-2B. Table depicting mutations in mitochondrial genes of Stard7^{KD}BEAS-2B cells. A total of 12 mutations were found.

deletion of Stard7 leads to disruption of mitochondrial homeostasis in lung epithelial cells of Stard7^{epiΔ/Δ} mice, similar to findings in BEAS-2B cells (this study) and HEPA-1 cells⁸.

Stard7 deficiency is associated with altered epithelial barrier integrity *in vivo*. To determine the impact of altered mitochondrial structure and function on epithelial barrier integrity, mice were intravenously injected with FITC-albumin and barrier leak estimated by recovery of fluorescent label in bronchoalveolar lavage fluid (Fig. 7a). This analysis revealed that alveolar epithelial barrier permeability was significantly increased in Stard7^{epiΔ/Δ} mice compared to Stard7^{fl/fl} controls. Scanning electron microscopy of the surface of the bronchiolar epithelium detected tight cell-cell junctions among ciliated and club cells of 4-month-old Stard7^{fl/fl} mice (Fig. 7b, left panel). In contrast, surface fractures, consistent with disruption of cell-cell junctions, were detected in the bronchiolar epithelium of Stard7^{epiΔ/Δ} mice (Fig. 7b, right panel). Access of lanthanum nitrate to intercellular spaces in the bronchiolar epithelium of Stard7^{epiΔ/Δ} mice, but not Stard7^{fl/fl} mice, confirmed that paracellular permeability was increased in airways of Stard7-deficient animals (Fig. 7c). To further assess the effect of Stard7 deficiency on airway epithelial barrier function, tracheal epithelial cells (mTEC) were isolated from Stard7^{epiΔ/Δ} and Stard7^{fl/fl} mice and cultured at an air-liquid interface. Barrier leak, estimated from paracellular flux of FITC-dextran, was significantly increased in monolayers of Stard7-deficient cells (Fig. 7d). Importantly, incubation of Stard7-deficient cells with MitoTEMPO completely reversed the increase in epithelial barrier permeability. Collectively, these findings indicate that selective deletion of Stard7 in lung epithelial cells leads to mitochondrial dysfunction that, in turn, is associated with oxidant-mediated changes in epithelial barrier integrity and function.

Discussion

Loss of Stard7 expression was associated with altered mitochondrial size and membrane organization in a human airway epithelial cell line and in lung epithelial cells of mice with targeted deletion of Stard7. Changes in mitochondrial structure were accompanied by perturbation of mitochondrial homeostasis, including decreased aerobic respiration, increased generation of ROS, and mitochondrial DNA damage. Impaired mitochondrial function was partially rescued by specific targeting of Stard7 to mitochondria. Mitochondrial dysfunction in Stard7-deficient epithelial cells was subsequently linked to increased epithelial barrier permeability *in vitro* and *in vivo*. These findings provide evidence that Stard7 is required for mitochondrial structure/function and suggest that Stard7-mediated PC transfer is important for mitochondrial homeostasis and that mitochondrial dysfunction associated with Stard7 deficiency can lead to altered epithelial barrier function.

In the present study, western blotting of airway epithelial cells detected Stard7 as a protein with Mr~34k (Stard7-2), with only a trace amount of Stard7-1 (Mr~43k), consistent with previous findings in a liver cell line⁷ and placental tissue/cells²⁶. Generation of Stard7-2 likely occurs by proteolytic processing of Stard7-1 resulting in removal of a 75-amino acid leader sequence that harbors a MTS, predicted to be contained within residues 1–58⁷. Removal of the domain downstream of the MTS (~17 amino acids) likely occurs at the OMM, but the precise cleavage site(s) and the identity of the enzyme(s) involved in the cleavage event are not known. Rapid conversion of Stard7-1 to Stard7-2⁷ and localization of Stard7 to cytoplasm, plasma membrane and nucleus^{26,27} suggests that Stard7-2 may also have a non-mitochondrial function. Given the ability of Stard7-2 to bind and transport PC⁷, it is possible that Stard7-2 may facilitate exchange of PC among intracellular organelles other than mitochondria. The importance of this putative PC transport pathway and the regulation of PC transfer activity, by association with other proteins and/or post-translational modification(s) of Stard7-2, remain unknown.

Consistent with the ability of Stard7-1 to specifically transfer PC to mitochondria, Horibata, *et al.*⁸ recently demonstrated that PC species in isolated mitochondria were decreased following knockdown or knockout of Stard7 in HEPA-1 cells. Based on the complete absence of Stard7 in knockout cells, the change in mitochondrial PC content was less than expected, an outcome that likely reflects redundancy in mitochondrial PC transfer pathways. In this regard, phosphorylation of S110 by protein Kinase C was previously shown to mediate interaction of Stard2/PC-TP with the OMM, although it is not known if this interaction is coupled to PC transfer²⁸. The ability of Stard10 to function as a mitochondrial PC transfer protein has not been tested. It is possible that PC transfer

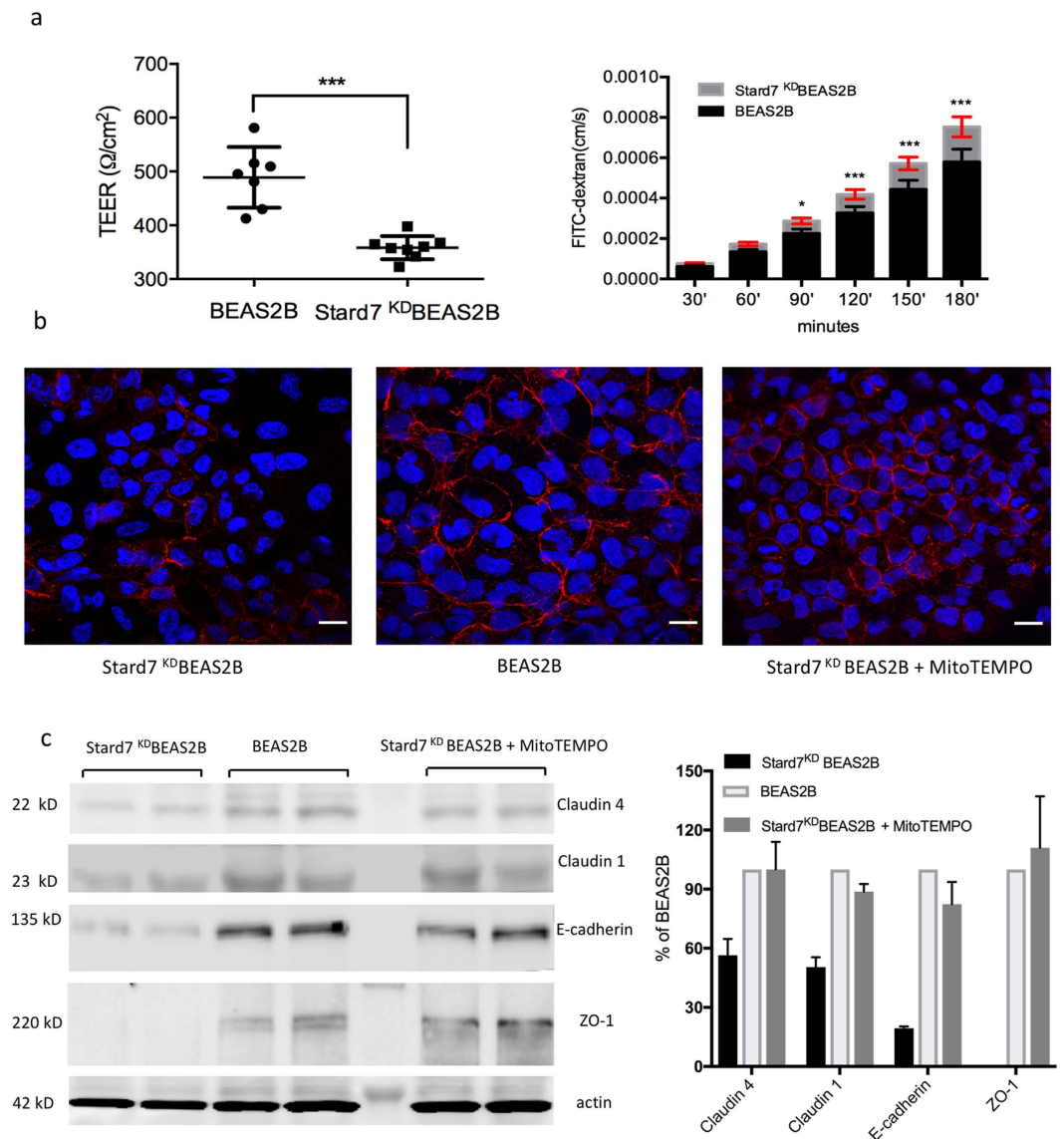


Figure 4. Stard7 deficiency increases epithelial barrier permeability. (a) The effect of Stard7 deficiency on BEAS-2B cell monolayer integrity was assessed by measuring transepithelial electrical resistance (TEER, left panel). The effect of Stard7 deficiency on the transepithelial permeability was determined by measuring apical to basolateral diffusion of FITC-dextran at the indicated time points (right panel). Data are expressed as mean \pm SEM, $n = 3$; * $p < 0.05$, *** $p < 0.0001$, BEAS-2B cells vs. Stard7^{KD}BEAS-2B cells. (b) Expression of the adherens junction protein E-cadherin was assessed by immunofluorescent staining of BEAS-2B cells and Stard7^{KD}BEAS-2B cells cultured in the presence or absence of MitoTEMPO. Scale bars = 50 μM . (c) Apical junction protein expression was assessed in BEAS-2B cells and Stard7^{KD}BEAS-2B cells, cultured in the presence or absence of MitoTEMPO. Equal numbers of cells from each experimental group were aliquoted in duplicate, cultured for 48 h, and 20 μg protein from each cell lysate analyzed by SDS-PAGE/western blotting (left panel). Protein bands were quantitated by densitometry, the data normalized to actin, and mean values expressed as percent of BEAS-2B control cells (right panel).

pathways may also involve phospholipid transfer proteins that are not members of the START domain family. Additionally, PC transfer may occur at ER-OMM contact sites referred to as mitochondrial associated membranes (MAM)¹³; however, although import of PS via MAMs has been studied in mammalian cells, comparable analyses for PC are lacking^{9,10}. The consequences of mitochondrial PC deficiency are also poorly understood. In yeast, depletion of PC affected the import, folding, and integration of proteins into the OMM²⁹; altered import of nuclear-encoded proteins into the mitochondria can lead to protein accumulation in the cytosol with consequent activation of stress response pathways^{30,31}. Whether altered protein translocation contributes to mitochondrial dysfunction in Stard7-deficient cells remains to be determined. Overall, loss of PC associated with Stard7 deficiency likely contributed to changes in mitochondrial structure and function by altering membrane geometry and

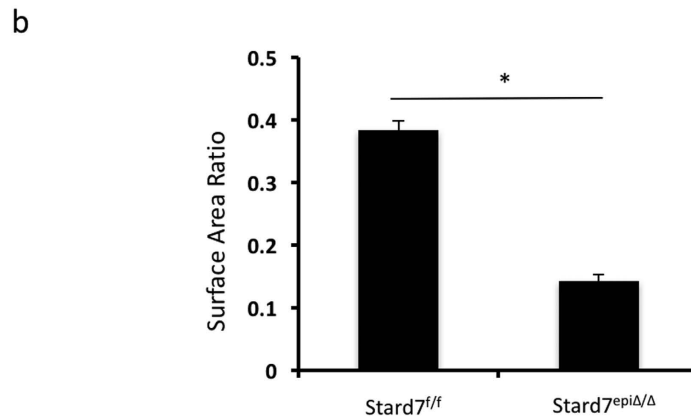
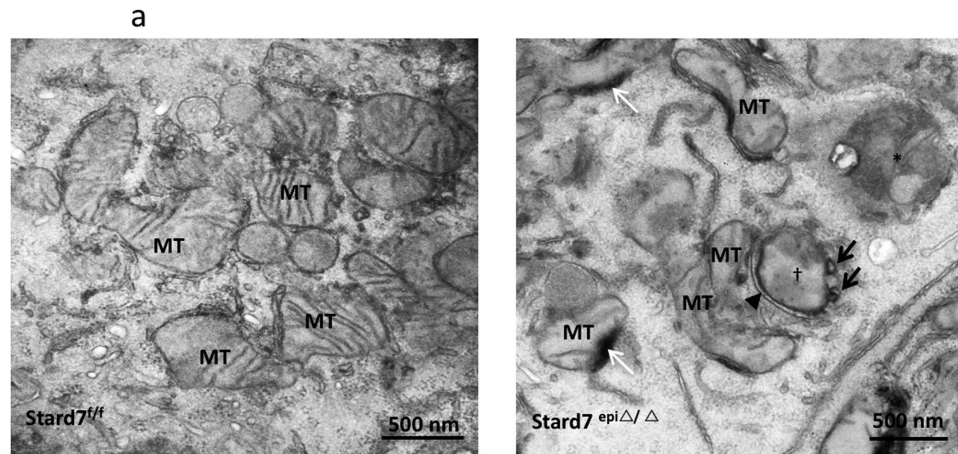


Figure 5. Altered mitochondrial structure in airway epithelial cells of *Stard7*^{epiΔ/Δ} mice. (a) Airway sections obtained from lungs of 4-month-old *Stard7*^{fl/fl} and *Stard7*^{epiΔ/Δ} mice were examined by electron microscopy. *Stard7*^{epiΔ/Δ} mice exhibited mitochondrial abnormalities in bronchiolar epithelial cells, including poorly defined mitochondrial matrix, reduction in number of cristae, increased lipid accumulation juxtaposed to outer limiting membrane of mitochondria (white arrow), formation of mitochondrial blebs (black arrow), and mitochondrial disintegration. Formation of an isolation membrane (small arrow) encircling a mitochondria (cross) and autophagosomes (asterisk) containing mitochondrial fragments were pronounced in some *Stard7*^{KO} cells. (b) Electron micrographs of mitochondria in ciliated bronchiolar epithelial cells, acquired from 4-month-old *Stard7*^{fl/fl} and *Stard7*^{epiΔ/Δ} mice, were used for morphometric analysis. There was a significant reduction of mitochondrial cristae in ciliated bronchiolar epithelial cells of *Stard7*^{epiΔ/Δ} mice compared to *Stard7*^{fl/fl} mice, ***p* < 0.001; MT = mitochondria.

disrupting formation of supercomplexes required for mitochondrial respiration. In this regard Horibata, *et al.*⁸ showed that the formation and stability of supercomplexes was altered in *Stard7* knockdown cells.

Disruption of mitochondrial respiration in *Stard7*-deficient cells did not negatively impact cellular ATP content; rather, ATP levels were maintained by glycolysis, although we cannot exclude the possibility that decreased energy consumption also contributed to an increase in ATP availability. *Stard7* deficiency was associated with increased ROS in both BEAS-2B cells and isolated lung epithelial cells (this study) as well as HepG2 cells⁶. Oxidant stress has been linked to increased barrier permeability, in part, through disruption of apical junctional complexes^{AJC 32–35}. AJC consist of tight junctions and underlying *adherens* junctions that regulate paracellular solute passage and cell-cell adhesion, respectively. In this study, increased ROS were associated with decreased expression of key tight junction proteins, including claudin-1, claudin-4, and ZO-1, and increased epithelial barrier permeability in *Stard7*-deficient cells. Expression of E-cadherin, an *adherens* junction protein critical for cell-cell adhesion, was also significantly perturbed and was substantially rescued by treatment of *Stard7*-deficient cells with a mitochondrial-targeted antioxidant. Further, MitoTEMPO treatment of airway epithelial cells from *Stard7*-deficient mice restored barrier function. Collectively, these findings suggest that *Stard7* deficiency leads to increased mitochondrial ROS that, in turn, promote epithelial barrier leak. Importantly, mitochondrial dysfunction, oxidative stress and epithelial barrier dysfunction are strongly implicated in the pathogenesis of allergic airway disease^{36–39}.

In summary, these studies demonstrate that loss of *Stard7* expression is associated with altered mitochondrial structure and function, both *in vitro* and *in vivo*. Mitochondrial dysfunction arising from *Stard7* deficiency was associated with elevated ROS and impaired epithelial barrier integrity; whether, barrier leak is sufficient

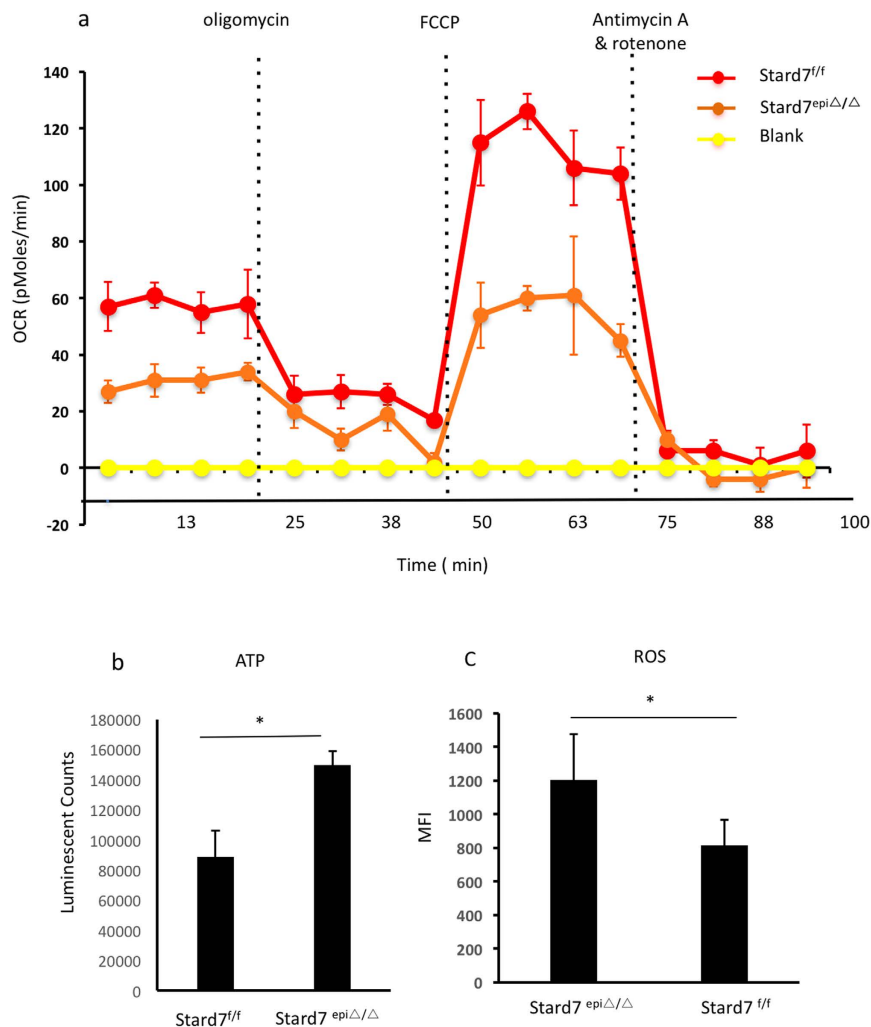


Figure 6. Impact of Stard7 deficiency on OCR, ATP, and ROS in lung epithelial cells. (a) Lung epithelial cells were isolated from 4-month-old Stard7^{fl/fl} and Stard7^{epiΔ/Δ} mice and OCR (pMoles/min) measured under basal conditions and in response to the indicated mitochondrial inhibitors. OCR was lower in lung epithelial cells from Stard7^{epiΔ/Δ} mice (mean ± SEM, $n = 5$). (b) Cellular ATP levels were assessed in isolated epithelial cells. Data are presented as mean ± SEM, $n = 3$. There was a significant increase of ATP in lung epithelial cells of Stard7^{epiΔ/Δ} compared to Stard7^{fl/fl} mice, * $p = 0.0115$. (c) Isolated lung epithelial cells were incubated with or without DCFDA and analyzed by flow cytometry. ROS levels were significantly increased in lung epithelial cells of Stard7^{epiΔ/Δ} mice compared to Stard7^{fl/fl} mice, * $p = 0.0193$. Data is presented as MFI (mean ± SEM, $n = 3$).

to promote airway hyperreactivity or other aspects of the allergic airway phenotype in Stard7-deficient mice, remains to be determined. Lastly, given the relative abundance of cytosolic Stard7-2, we cannot exclude the possibility that loss of Stard7 expression may also affect cellular homeostasis via a non-mitochondrial pathway(s).

Methods

Generation and characterization of Stard7^{epiΔ/Δ} mice. All experiments involving mice were performed in accordance with guidelines and regulations approved by the Institutional Animal Care and Use Committee of the Cincinnati Children's Research Foundation (Cincinnati, OH). All mice were housed in a pathogen-free barrier facility in humidity- and temperature-controlled rooms on a 12:12 h light/dark cycle and were allowed access to food and water *ad libitum*. Stard7^{epiΔ/Δ} mice were generated by breeding three existing lines of mice, as illustrated in Fig. S3. Primers used for genotyping are listed in Table 2 (supplement). Antibodies used for western blotting or immunofluorescence microscopy are described in Table 3 (supplement).

Knockdown of Stard7 in BEAS-2B Cells. BEAS-2B cells were grown and maintained in RPMI-1640 media with 5% heat-inactivated FBS. The sequence of the Stard7 shRNA (Sigma, TRCN0000151458) is listed in Table 4 (supplement). Lentiviral particles were prepared by the Viral Vector Core (Cincinnati Children's Hospital Medical Center). Cells in 10-cm plates were transduced with viral particles (multiplicity of infection = 45-90) in 1 ml of RPMI-160 media containing 6 μg/ml of polybrene (Sigma, USA). After 24 h, conditioned media was removed and replaced with fresh RPMI-160 media. Cells were selected with 10 μg/ml puromycin (Sigma) for 1 month after viral

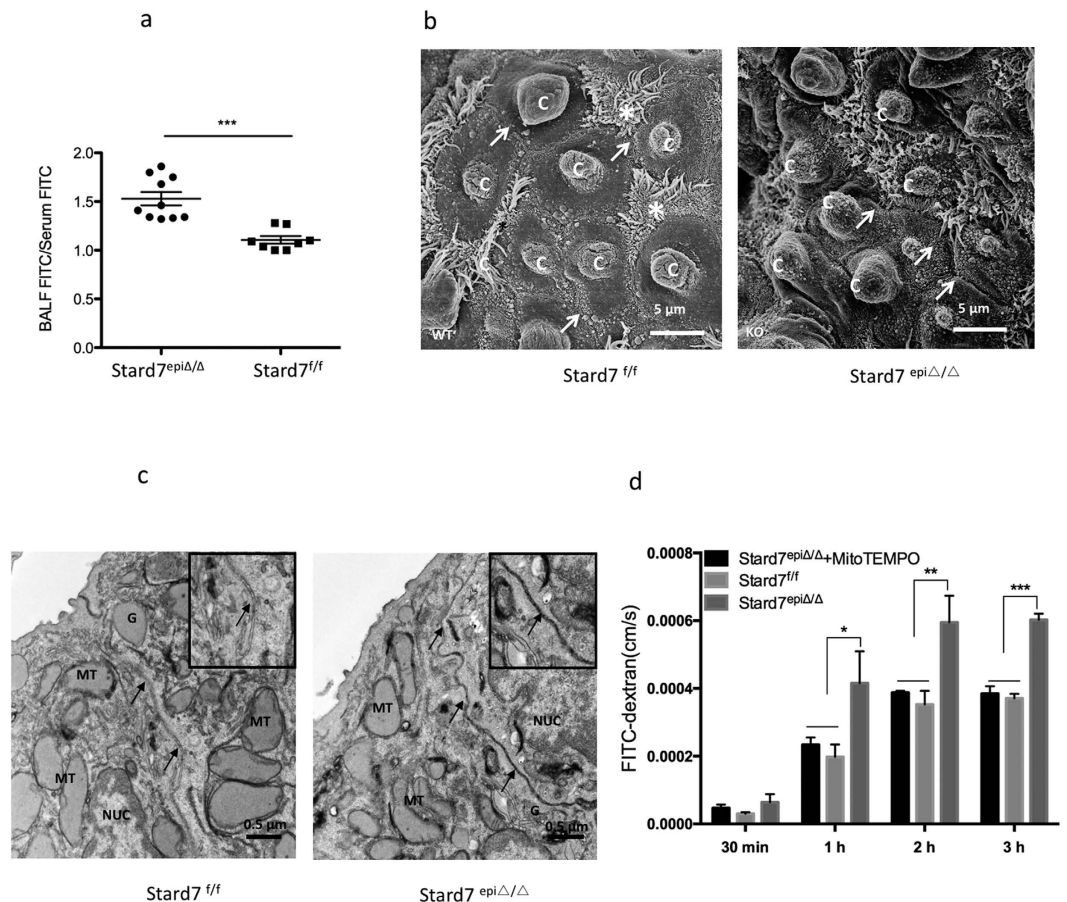


Figure 7. Altered epithelial barrier structure and function in *Stard7*^{epiΔ/Δ} mice. (a) Epithelial barrier permeability was assessed by tail vein injection of FITC-albumin, followed by quantitation of FITC in BALF and serum from *Stard7*^{f/f} and *Stard7*^{epiΔ/Δ} mice. Results are expressed as BALF FITC/Serum FITC, $n = 8-10$ mice/group. *Stard7*^{f/f} mice vs. *Stard7*^{epiΔ/Δ} mice, *** $p = 0.0001$. (b) SEM detected surface fractures between bronchiolar epithelial cells (asterisk) and club cells (C) in *Stard7*^{epiΔ/Δ} mice. (c) Fixed mouse lungs were cut into 1–2 mm lung slices, incubated with 2% lanthanum nitrate at room temperature overnight, and processed for electron microscopy. Penetration of electron dense lanthanum nitrate into the intercellular spaces (arrow) was detected in the airway epithelium of *Stard7*^{epiΔ/Δ} mice. G: Golgi, MT: mitochondria, NUC: Nucleus. (d) Tracheal epithelial cells were isolated from *Stard7*^{epiΔ/Δ} and *Stard7*^{f/f} mice and cultured until TEER >220/cm². Cells were subsequently differentiated at an air-liquid interface for 3 weeks and treated with/without MitoTEMPO (5 μM) every other day. Paracellular flux of FITC-dextran was measured over a 3 hr period. *Stard7*^{epiΔ/Δ} vs. *Stard7*^{epiΔ/Δ} + MitoTEMPO, * $p = 0.0311$, ** $p = 0.0106$, *** $p < 0.001$; *Stard7*^{epiΔ/Δ} vs. *Stard7*^{f/f}, * $p = 0.0201$, ** $p = 0.0091$, *** $p < 0.001$.

transduction. *Stard7* mRNA (*Stard7* probe set from Integrated DNA Technologies, Hs.PT.58.20774759) and protein were assessed by qPCR and western blotting of *Stard7* knockdown (*Stard7*^{KD}) BEAS-2B cells.

Generation of *Stard7*-1HA and *Stard7*-2HA Constructs. *Stard7* constructs resistant to *Stard7*shRNA were generated by introducing silent mutations (bold letters) using the oligonucleotides listed in Table 4 (supplement). Site-directed mutagenesis of human *Stard7* was performed according to the manufacturer's protocol (QuikChange II XL Site-Directed Mutagenesis Kit, Agilent Technologies, Cat# 200522) and verified by DNA sequence analysis. Primers used for *Stard7*-1HA and *Stard7*-2HA constructs are listed in Table 4 (supplement). An HA tag (YPYDVPDYA)⁴⁰ was encoded in the downstream primer. The amplified *Stard7*-1HA and *Stard7*-2HA PCR fragments were cloned into the EcoV/XbaI sites of pcDNA3.1(+) vector (Invitrogen, Carlsbad, CA). *Stard7*^{KD}BEAS-2B cells were transfected with pcDNA3.1-*Stard7*-1HA, pcDNA-*Stard7*-2HA or empty vector plasmid using X-tremegene HP DNA transfection reagent (Sigma-Aldrich, Cat# 06366236001).

Mitochondrial Respiration. Mitochondrial respiration was determined by measuring oxygen consumption rate (OCR) with a Seahorse XF24 Analyzer and the XF Cell Mito Stress Test Kit (Seahorse Bioscience, North Billerica, MA, USA). Briefly, BEAS-2B cells (1×10^5 cells/well) or *Stard7*^{KD}BEAS-2B cells were seeded onto 24-well XF-PS plates overnight. On the day of the assay, cell culture media was replaced with XF assay media (unbuffered Dulbecco's modified Eagle's medium supplemented with 11 mM glucose, 2 mL L-glutamax, and

1 mM sodium pyruvate). Basal OCR was measured over time followed by sequential addition of the mitochondrial inhibitors oligomycin (1 μ M), carbonyl cyanide-p-trifluoromethoxyphenylhydrazon (3 μ M), and antimycin A/rotenone (1 μ M). ATP-linked respiration was derived from the difference between OCR at baseline and following oligomycin addition. The difference in OCR between antimycin A and oligomycin represented the amount of oxygen consumed due to proton leak. Maximal OCR was determined by subtracting the OCR after antimycin A addition from the OCR induced by carbonyl cyanide-p-trifluoromethoxyphenylhydrazon (FCCP). Lastly, the reserve capacity was calculated by the difference between maximal and basal respiration.

Mitochondrial Membrane Potential. Mitochondrial membrane potential ($\Delta\psi_m$) was assessed using the membrane potential sensitive cyanine dye DilC₁(5) (MitoProbe, ThermoFisher, Cat# M34151). The dye becomes concentrated in mitochondria with active membrane potentials leading to an increase in fluorescence intensity; disruption of $\Delta\psi_m$ significantly compromises DilC₁(5) accumulation, resulting in a decrease of fluorescence intensity. BEAS-2B or Stard7^{KD}BEAS-2B cells (2 \times 10⁵/200 μ l) were incubated with or without 25 nM DilC₁(5) for 20 min at 37 °C, followed by 2 wash steps and analysis by flow cytometry (LSRII flow cytometer, BD Bioscience).

Mitochondrial ROS Analysis. ROS were assayed using DCFDA, according to the manufacturer's instructions (Abcam, Cat# ab113851). BEAS-2B or Stard7^{KD}BEAS-2B cells (5 \times 10⁵ cells/ml) were incubated with 20 μ M DCFDA for 30 min at 37 °C, then analyzed by flow cytometry. Cells were also treated with TBHP (50 μ M) to induce oxidative stress.

Mitochondrial (mt) DNA Copy Number and Mutation Analyses. Total genomic DNA from 1 \times 10⁷ BEAS-2B and Stard7^{KD}BEAS-2B cells was isolated with QIAamp kit (Qiagen). The relative mtDNA copy numbers were measured by real-time PCR (ABI PRISM 7900) for mitochondrial genes (16sRNA, tRNA and Cox4) and normalized by simultaneous quantitation of nuclear DNA (actin). Primer sequences are listed in Table 4 (supplement). PCR was performed for 40 cycles with 10 ng DNA in a 25- μ L reaction mixture using a SYBR green PCR master mix kit and 50 nmol forward and reverse primers. PCR cycling conditions included a 15-s denaturation step at 95 °C, 20-s annealing step at 60 °C, and 15-s extension step at 72 °C. A melting curve was performed for 20 min after the real-time PCR, and analysis was performed using the Dissociation Curve Software. The amplified products were denatured and reannealed at different temperatures to detect their specific melting temperatures. The threshold cycle number (Ct) values were determined in the same quantitative PCR run and results confirmed by a second run. Ct values were used as a measure of the copy number, and Ct value differences were used to quantify mtDNA copy number relative to β -actin, calculated as follows: relative copy number (Rc) = 2 ^{$\Delta\Delta$ Ct}, where Δ Ct = Ct β -actin - CtmtDNA⁴¹.

To determine if elevated ROS were associated with increased frequency of mtDNA mutation, the mitochondrial genomes of BEAS-2B and Stard7^{KD}BEAS-2B cells were compared (Table 1). mtDNA was amplified in a single PCR reaction, as previously described⁴² using primers F-2120 and R-2119 (Table 4, supplement) that specifically recognize mtDNA but not nuclear mitochondrial pseudo-genes. Amplified DNA was used for library preparation with the Nextera XT DNA Kit (Illumina). Sequencing was performed on the Illumina MiSeq platform (DNA Core Facility, Cincinnati Children's Hospital Medical Center), and sequence reads ranging from 100 to 200 bp were quality filtered and processed using NextGENe software. The sequence error correction feature (condensation) was used to reduce false-positive variants and produce sample consensus sequence and variant calls. Alignment without sequence condensation was used to calculate the percentage of the mitochondrial genome with a depth of coverage of 1,000. Starting from quality FASTQ reads, the reads were quality filtered and converted to FASTA format. Filtered reads were aligned to the human mitochondrial sequence reference NC_012920.1, followed by variant calling. Variant heteroplasmy was calculated by NextGENe software as follows: Base heteroplasmy (mutant allele frequency %) = mutant allele (forward + reverse)/total coverage of all alleles C, G, T, and A (forward + reverse) 100⁴³.

Mouse Tracheal Epithelial Cell Isolation and culture. Isolated mouse tracheal epithelial cells were cultured at an air-liquid interface, as previously described⁴⁴. Briefly, mTECs were isolated from the tracheas of 6-8 week old Stard7^{fl/fl} and Stard7^{epi Δ / Δ} mice and grown as submerged cultures on the apical surface of membrane inserts in transwell plates for 10 days. When TEER exceeded 220 Ω /cm², the apical media was removed and mTECs were differentiated at an air-liquid interface for 3 weeks prior to analysis.

Scanning Electron Microscopy (SEM). Lungs from 4-5-month-old Stard7^{epi Δ / Δ} and Stard7^{fl/fl} mice were inflation-fixed with 2% paraformaldehyde, 2% glutaraldehyde, and 0.1% CaCl₂ in 0.1 M sodium cacodylate buffer, pH 7.3 for 30 min on ice. Lung slices (1-2 mm thick) were incubated with 1% osmium (EMS, Hatfield, PA) and 1.5% potassium ferrocyanide (Sigma-Aldrich, St. Louis, MO) in 0.1 M, pH 7.3, for 2 hours, dehydrated in a graded series of alcohol, washed with hexamethyldisilazane (EMS, Hatfield, PA), and air dried in a chemical fume hood for up to 2 days. Lung slices were mounted on specimen stubs and coated with palladium/gold using a Denton Vacuum Desk IV sputter coater (Denton Vacuum, Moorestown, NJ). Scanning electron images were acquired using a Hitachi field emission scanning electron microscope SU8010 (Hitachi High Technologies America, Inc., Clarksburg, MD) at 5 kV.

Transmission Electron Microscopy. Lungs from 4-5-month-old Stard7^{fl/fl} and Stard7^{epi Δ / Δ} mice were fixed for transmission electron microscopy as described for SEM, with modifications to visualize defective airway cell junctions by incubation with the permeability tracer lanthanum nitrate. Following inflation fixation, lung slices were incubated with 2% lanthanum nitrate in fixative at room temperature overnight, followed by routine preparation for TEM^{45,46}. Electron micrographs were collected using a Hitachi H-7650 TEM (Hitachi

High Technologies America, Inc., Dallas, TX) equipped with an AMT transmission electron microscope charge-coupled device camera (Advanced Microscopy Techniques, Woburn, MA).

Morphometric Analysis of mitochondria by Confocal Microscopy and TEM. Mitochondrial morphometry was determined by image analysis using a protocol modified from Koopman *et al.*⁴⁷. Mitochondria of BEAS-2B cells were labeled with TOMM22 antibody and analyzed by confocal microscopy as previously described⁴⁶. Acquired image stacks of labeled BEAS-2B cells were segmented by channel separation and thresholding to generate binary images. Subsets of labeled BEAS-2B cells were extracted and resampled at 0.5 μm sample distance from the original image stacks (sample distance 0.125 μm) for morphometric analysis. Binary images of labeled mitochondria were measured using the shape descriptor module in FIJI⁴⁸.

Randomly selected ciliated bronchiolar epithelial cells obtained from the airways of 4-month-old Stard7^{fl/fl} and Stard7^{epi Δ/Δ} mice were chosen for mitochondrial morphometry at the EM level. To determine the size and shape of mitochondria, individual mitochondria were manually traced using a Wacom Intuos graphic tablet. Binary images of traced mitochondria were segmented by thresholding, followed by point counting, as described by Mülhfeld *et al.*⁴⁹.

Statistical Analyses. Data are expressed as mean \pm SEM. Significant difference between groups were analyzed using Prism 5 software (GraphPad Software, San Diego, CA) by unpaired Student t test and ANOVA, unless otherwise noted. Statistical significance was set at * $p \leq 0.05$, ** $p \leq 0.01$, and *** $p \leq 0.001$.

References

- Alpy, F. & Tomasetto, C. Give lipids a START: the StAR-related lipid transfer (START) domain in mammals. *J. Cell Sci.* **118**, 2791–2801 (2005).
- Clark, B. J. The mammalian START domain protein family in lipid transport in health and disease. *J. Endocrinol.* **212**, 257–275 (2012).
- Durand, S., Angeletti, S. & Genti-Raimondi, S. GTT1/StarD7, a novel phosphatidylcholine transfer protein-like highly expressed in gestational trophoblastic tumour: cloning and characterization. *Placenta* **25**, 37–44 (2004).
- Flores-Martin, J., Rena, V., Angeletti, S., Panzetta-Dutari, G. M. & Genti-Raimondi, S. The Lipid Transfer Protein StarD7: Structure, Function, and Regulation. *Int. J. Mol. Sci.* **14**, 6170–6186 (2013).
- Flores-Martin, J., Rena, V., Marquez, S., Panzetta-Dutari, G. M. & Genti-Raimondi, S. StarD7 knockdown modulates ABCG2 expression, cell migration, proliferation, and differentiation of human choriocarcinoma JEG-3 cells. *PLoS One* **7**, e44152 (2012).
- Flores-Martin, J., Reyna, L., Ridano, M. E., Panzetta-Dutari, G. M. & Genti-Raimondi, S. Suppression of StarD7 promotes endoplasmic reticulum stress and induces ROS production. *Free Radic. Biol. Med.* **99**, 286–295 (2016).
- Horibata, Y. & Sugimoto, H. StarD7 mediates the intracellular trafficking of phosphatidylcholine to mitochondria. *J. Biol. Chem.* **285**, 7358–7365 (2010).
- Horibata, Y. *et al.* StarD7 Protein Deficiency Adversely Affects the Phosphatidylcholine Composition, Respiratory Activity, and Cristae Structure of Mitochondria. *J. Biol. Chem.* **291**, 24880–24891 (2016).
- Flis, V. V. & Daum, G. Lipid transport between the endoplasmic reticulum and mitochondria. *Cold Spring Harb. Perspect. Biol.* **5**, (2013).
- Tamura, Y., Sesaki, H. & Endo, T. Phospholipid transport via mitochondria. *Traffic* **15**, 933–945 (2014).
- Xu, Y., Malhotra, A., Ren, M. & Schlame, M. The enzymatic function of tafazzin. *J. Biol. Chem.* **281**, 39217–39224 (2006).
- Ren, M., Phoon, C. K. & Schlame, M. Metabolism and function of mitochondrial cardiolipin. *Prog. Lipid Res.* **55**, 1–16 (2014).
- Vance, J. E. M. A. M. (mitochondria-associated membranes) in mammalian cells: lipids and beyond. *Biochim. Biophys. Acta* **1841**, 595–609 (2014).
- Yang, L. *et al.* Haploinsufficiency for Stard7 is associated with enhanced allergic responses in lung and skin. *J. Immunol.* **194**, 5635–5643 (2015).
- Guajardo, J. R. *et al.* Altered gene expression profiles in nasal respiratory epithelium reflect stable versus acute childhood asthma. *J. Allergy Clin. Immunol.* **115**, 243–251 (2005).
- Wills-Karp, M. Allergen-specific pattern recognition receptor pathways. *Curr. Opin. Immunol.* **22**, 777–782 (2010).
- Lambrecht, B. N. & Hammad, H. The airway epithelium in asthma. *Nat. Med.* **18**, 684–692 (2012).
- Holgate, S. T., Roberts, G., Arshad, H. S., Howarth, P. H. & Davies, D. E. The role of the airway epithelium and its interaction with environmental factors in asthma pathogenesis. *Proc. Am. Thorac. Soc.* **6**, 655–659 (2009).
- Holgate, S. T. The sentinel role of the airway epithelium in asthma pathogenesis. *Immunol. Rev.* **242**, 205–219 (2011).
- Konradová, V., Copová, C., Suková, B. & Houstěk, J. Ultrastructure of the bronchial epithelium in three children with asthma. *Pediatr. Pulmonol.* **1**, 182–187 (1985).
- Aguilera-Aguirre, L. *et al.* Mitochondrial dysfunction increases allergic airway inflammation. *J. Immunol.* **183**, 5379–5387 (2009).
- Mabalarajan, U. *et al.* Linoleic acid metabolite drives severe asthma by causing airway epithelial injury. *Sci. Rep.* **3**, 1349 (2013).
- Thomas, B. *et al.* Ciliary dysfunction and ultrastructural abnormalities are features of severe asthma. *J. Allergy Clin. Immunol.* **126**, 722–729.e2 (2010).
- Mabalarajan, U. *et al.* Mitochondrial structural changes and dysfunction are associated with experimental allergic asthma. *J. Immunol.* **181**, 3540–3548 (2008).
- Chan, S. W. & Chen, J. Z. Measuring mtDNA damage using a supercoiling-sensitive qPCR approach. *Methods Mol. Biol.* **554**, 183–197 (2009).
- Angeletti, S. *et al.* Expression and localization of StarD7 in trophoblast cells. *Placenta* **29**, 396–404 (2008).
- Leman, E. S. *et al.* Identification of nuclear structural protein alterations associated with seminomas. *J. Cell. Biochem.* **108**, 1274–1279 (2009).
- de Brouwer, A. P. *et al.* Clofibrate-induced relocation of phosphatidylcholine transfer protein to mitochondria in endothelial cells. *Exp. Cell Res.* **274**, 100–111 (2002).
- Schuler, M. H. *et al.* Phosphatidylcholine Affects the Role of the Sorting and Assembly Machinery in the Biogenesis of Mitochondrial β -Barrel Proteins. *J. Biol. Chem.* **290**, 26523–26532 (2015).
- Richter-Dennerlein, R., Dennerlein, S. & Rehling, P. Integrating mitochondrial translation into the cellular context. *Nat. Rev. Mol. Cell Biol.* **16**, 586–592 (2015).
- Lin, Y. F. & Haynes, C. M. Metabolism and the UPR(mt). *Mol. Cell* **61**, 677–682 (2016).
- Overgaard, C. E., Daugherty, B. L., Mitchell, L. A. & Koval, M. Claudins: control of barrier function and regulation in response to oxidant stress. *Antioxid. Redox Signal.* **15**, 1179–1193 (2011).
- Blasig, I. E. *et al.* Occludin protein family: oxidative stress and reducing conditions. *Antioxid. Redox Signal.* **15**, 1195–1219 (2011).

34. González-Mariscal, L., Quirós, M. & Díaz-Coránguez, M. ZO proteins and redox-dependent processes. *Antioxid. Redox Signal.* **15**, 1235–1253 (2011).
35. Blasig, I. E. & Haseloff, R. F. Tight junctions and tissue barriers. *Antioxid. Redox Signal.* **15**, 1163–1166 (2011).
36. Georas, S. N. & Rezaee, F. Epithelial barrier function: at the front line of asthma immunology and allergic airway inflammation. *J. Allergy Clin. Immunol.* **134**, 509–520 (2014).
37. Schumacker, P. T. *et al.* Mitochondria in lung biology and pathology: more than just a powerhouse. *Am. J. Physiol. Lung. Cell Mol. Physiol.* **306**, L962–74 (2014).
38. Ciencewicki, J., Trivedi, S. & Kleeberger, S. R. Oxidants and the pathogenesis of lung diseases. *J. Allergy Clin. Immunol.* **122**, 456–68, quiz 469 (2008).
39. Cloonan, S. M. & Choi, A. M. Mitochondria in lung disease. *J. Clin. Invest.* **126**, 809–820 (2016).
40. Kolodziej, P. A. & Young, R. A. Epitope tagging and protein surveillance. *Methods Enzymol.* **194**, 508–519 (1991).
41. Rooney, J. P. *et al.* PCR based determination of mitochondrial DNA copy number in multiple species. *Methods Mol Biol* **1241**, 23–38 (2015).
42. Ma, H. *et al.* Metabolic rescue in pluripotent cells from patients with mtDNA disease. *Nature* **524**, 234–238 (2015).
43. Kang, E. *et al.* Age-Related Accumulation of Somatic Mitochondrial DNA Mutations in Adult-Derived Human iPSCs. *Cell Stem Cell* **18**, 625–636 (2016).
44. Lam, H. C., Choi, A. M. & Ryter, S. W. Isolation of mouse respiratory epithelial cells and exposure to experimental cigarette smoke at air liquid interface. *J Vis Exp* e2513 (2011).
45. Hahn, D. R., Na, C. L. & Weaver, T. E. Reserve autophagic capacity in alveolar epithelia provides a replicative niche for influenza A virus. *Am. J. Respir. Cell Mol. Biol.* **51**, 400–412 (2014).
46. Fritz, J. M. *et al.* Deficiency of the BiP co-chaperone ERdj4 causes constitutive endoplasmic reticulum stress and metabolic defects. *Mol. Biol. Cell* **25**, 431–440 (2014).
47. Koopman, W. J. *et al.* Mitochondrial network complexity and pathological decrease in complex I activity are tightly correlated in isolated human complex I deficiency. *Am. J. Physiol. Cell Physiol.* **289**, C881–90 (2005).
48. Schindelin, J. *et al.* Fiji: an open-source platform for biological-image analysis. *Nat. Methods* **9**, 676–682 (2012).
49. Mühlfeld, C., Knudsen, L. & Ochs, M. Stereology and morphometry of lung tissue. *Methods Mol. Biol.* **931**, 367–390 (2013).

Acknowledgements

This study was supported by grants from the NHLBI (HL122130 and HL124186). The secretarial assistance of Ann Maher is gratefully acknowledged.

Author Contributions

T.E.W., L.Y., S.H., T.H., and C.-L.N. conceived and designed the experiments. L.Y., C.-L.N., S.L., and D.W. performed the experiments. T.E.W. wrote the manuscript.

Additional Information

Supplementary information accompanies this paper at <http://www.nature.com/srep>

Competing Interests: The authors declare no competing financial interests.

How to cite this article: Yang, L. *et al.* The Phosphatidylcholine Transfer Protein Stard7 is Required for Mitochondrial and Epithelial Cell Homeostasis. *Sci. Rep.* **7**, 46416; doi: 10.1038/srep46416 (2017).

Publisher's note: Springer Nature remains neutral with regard to jurisdictional claims in published maps and institutional affiliations.



This work is licensed under a Creative Commons Attribution 4.0 International License. The images or other third party material in this article are included in the article's Creative Commons license, unless indicated otherwise in the credit line; if the material is not included under the Creative Commons license, users will need to obtain permission from the license holder to reproduce the material. To view a copy of this license, visit <http://creativecommons.org/licenses/by/4.0/>

© The Author(s) 2017