

Keywords: colorectal cancer; CpG island methylator phenotype; microsatellite instability; prognosis; serrated neoplasia pathway

Distinct clinical outcomes of two CIMP-positive colorectal cancer subtypes based on a revised CIMP classification system

Jeong Mo Bae^{1,2}, Jung Ho Kim^{1,3}, Yoonjin Kwak^{3,4}, Dae-Won Lee⁵, Yongjun Cha⁵, Xianyu Wen¹, Tae Hun Lee¹, Nam-Yun Cho¹, Seung-Yong Jeong⁶, Kyu Joo Park⁶, Sae Won Han⁵, Hye Seung Lee^{3,4}, Tae-You Kim⁵ and Gyeong Hoon Kang^{*,1,3}

¹Laboratory of Epigenetics, Cancer Research Institute, Seoul National University College of Medicine, Seoul, South Korea; ²Department of Pathology, SMG-SNU Boramae Medical Center, Seoul, South Korea; ³Department of Pathology, Seoul National University College of Medicine, 103 Daehak-ro, Seoul 110-744, South Korea; ⁴Department of Pathology, Seoul National University Bundang Hospital, Seongnam, South Korea; ⁵Department of Internal Medicine, Seoul National University Hospital, Seoul, South Korea and ⁶Department of Surgery, Seoul National University Hospital, Seoul, South Korea

Background: Colorectal cancer (CRC) is a heterogeneous disease in terms of molecular carcinogenic pathways. Based on recent findings regarding the multiple serrated neoplasia pathway, we revised an eight-marker panel for a new CIMP classification system.

Methods: 1370 patients who received surgical resection for CRCs were classified into three CIMP subtypes (CIMP-N: 0–4 methylated markers, CIMP-P1: 5–6 methylated markers and CIMP-P2: 7–8 methylated markers). Our findings were validated in a separate set of high-risk stage II or stage III CRCs receiving adjuvant fluoropyrimidine plus oxaliplatin ($n = 950$).

Results: A total of 1287/62/21 CRCs cases were classified as CIMP-N/CIMP-P1/CIMP-P2, respectively. CIMP-N showed male predominance, distal location, lower T, N category and devoid of *BRAF* mutation, microsatellite instability (MSI) and *MLH1* methylation. CIMP-P1 showed female predominance, proximal location, advanced TNM stage, mild decrease of CK20 and CDX2 expression, mild increase of CK7 expression, *BRAF* mutation, MSI and *MLH1* methylation. CIMP-P2 showed older age, female predominance, proximal location, advanced T category, markedly reduced CK20 and CDX2 expression, rare *KRAS* mutation, high frequency of CK7 expression, *BRAF* mutation, MSI and *MLH1* methylation. CIMP-N showed better 5-year cancer-specific survival (CSS; HR = 0.47; 95% CI: 0.28–0.78) in discovery set and better 5-year relapse-free survival (RFS; HR = 0.50; 95% CI: 0.29–0.88) in validation set compared with CIMP-P1. CIMP-P2 showed marginally better 5-year CSS (HR = 0.28, 95% CI: 0.07–1.22) in discovery set and marginally better 5-year RFS (HR = 0.21, 95% CI: 0.05–0.92) in validation set compared with CIMP-P1.

Conclusions: CIMP subtypes classified using our revised system showed different clinical outcomes, demonstrating the heterogeneity of multiple serrated precursors of CIMP-positive CRCs.

Comprehensive genomic and epigenomic studies have revealed the heterogeneity of colorectal cancers (CRCs; Hinoue *et al*, 2012; Network TCGA, 2012). Currently, three major subtypes are widely accepted in the classification of CRCs: phenotypes with

chromosomal instability (CIN) or microsatellite instability (MSI) and the CpG island methylator phenotype (CIMP; Ogino *et al*, 2009; Boland and Goel, 2010). Virtually all CRCs arise from premalignant polyps. Fearon and Vogelstein (1990) previously

*Correspondence: Professor GH Kang; E-mail: ghkang@snu.ac.kr

Received 27 September 2016; revised 6 February 2017; accepted 8 February 2017; published online 9 March 2017



© The Author(s) named above

revealed a multistep pathway of CIN tumorigenesis, termed the 'adenoma-carcinoma sequence'. However, recent advances in molecular biology techniques for analysing serrated polyps have helped to elucidate an alternative multistep carcinogenesis model for MSI and CIMP CRCs, termed the 'serrated neoplasia pathway' (Leggett and Whitehall, 2010; Rex *et al*, 2012).

Sessile serrated adenomas (SSAs) and traditional serrated adenomas (TSAs) are considered precursors of the serrated neoplasia pathway (Fujita *et al*, 2011; Kim *et al*, 2016). Sessile serrated adenomas occur more commonly in women and on the right side of the colon, possess *BRAF* mutations, have a positive *MLH1* methylation status and often have a deficient DNA mismatch repair (dMMR) system. Traditional serrated adenomas occur more commonly in men and on the left side of the colon, possess *KRAS* or *BRAF* mutations, and have a proficient DNA mismatch repair (pMMR) system (Kim *et al*, 2010). Several recent studies investigating tubulovillous adenomas with serrated features (sTVA) suggest that sTVAs are involved as precursors in the serrated neoplasia pathway (Tsai *et al*, 2014; Bettington *et al*, 2016). This heterogeneity in serrated polyps may have different prognostic implication.

Studies into the prognostic value of individual genetic or epigenetic alteration, such as *KRAS* or *BRAF* mutations, MSI or CIMP, have shown inconsistent results due to the complex interactions of these molecular alterations that arise during colorectal carcinogenesis (Kim *et al*, 2009; Ogino *et al*, 2009; Andre *et al*, 2015; Taieb *et al*, 2016). In 2007, Jass classified CRCs into five molecular subtypes based on MSI and CIMP (Jass, 2007). In 2015, two studies showed an association of CRC patient outcomes with molecular subtypes based on this classification (Phipps *et al*, 2015). However, these classifications may need to be redefined based on recent findings regarding the multiple serrated neoplasia pathway.

In this study, we propose a revised CIMP classification system for CRCs based on the methylation level, which we found to correlate with molecular alterations in the precursors of multiple carcinogenic pathways in CRCs. Moreover, we clearly demonstrate the heterogeneity of the molecular characteristics and the corresponding prognostic implications of CIMP-positive CRCs.

PATIENTS AND METHODS

Study population. The discovery set consisted of 1853 CRC patients who underwent curative or palliative surgery at Seoul National University Hospital, Seoul, South Korea, between January 2004 and June 2008. After the exclusion of 483 patients (excluded based on refusal to participate in the study ($N=174$), non-invasive cancer ($N=50$), familial adenomatous polyposis ($N=13$), multiple occurrences ($N=88$), neoadjuvant chemo- and/or radiotherapy ($N=118$) or tumour recurrence ($N=40$)), formalin-fixed paraffin-embedded (FFPE) tissue samples from 1370 patients were collected for CIMP classification. Among these patients, 951 (69.4%) received postoperative chemotherapy and/or radiotherapy. Specifically, 531 patients received 5-fluorouracil (5-FU) with leucovorin, 365 received 5-FU and leucovorin plus oxaliplatin (FOLFOX), 49 received 5-FU and leucovorin plus irinotecan (FOLFIRI), and six received radiotherapy alone. Furthermore, 105 patients received concurrent chemoradiation therapy after the surgery, and 12 received additional treatment with bevacizumab. This study was approved by the Institutional Review Board of Seoul National University Hospital and was carried out in accordance with the recommendations of the Declaration of Helsinki for biomedical research involving human subjects.

Clinicopathological analysis. Clinicopathological characteristics, including age, sex, tumour location and TNM stage, were obtained

from electronic medical records. Based on microscopic examination of representative tumour sections, two pathologists (JMB and GHK) who were blind to the molecular study results evaluated the following parameters: tumour differentiation, luminal necrosis, tumour budding, Crohn-like lymphoid reactions, number of tumour-infiltrating lymphocytes, luminal serration and mucin production (Bae *et al*, 2015).

KRAS and BRAF mutations. DNA was extracted from FFPE tumour specimens. The areas in which tumour cells were most dense were determined via light microscopy. The corresponding areas were marked on 10 serial unstained slides; the marked areas were then manually scraped from the glass slides and collected in microtubes containing a lysis buffer (50 mM Tris, 1 mM EDTA, pH 8.0 and 1% Tween-20) and proteinase K (3 mg ml⁻¹). The samples were incubated at 55 °C for up to 48 h. After centrifugation, the supernatants were transferred into newly labelled microtubes. The samples were then placed into a 95 °C heating block for 10 min to inactivate the proteinase K. After the extraction of the genomic DNA, the *KRAS* exon 2 was amplified using a hemi-nested PCR method (with rTaq DNA Polymerase; Takara, Kyoto, Japan) with the following primer set: forward primer (5'-ACTGAATATA AACTTGTGGTAGTTGGCCCT-3'), reverse primer 1 (5'-TAAT ATGTCGACTAAAACAAGATTTACCTC-3'), and reverse primer 2 (5'-TCAAAGAATGGTCCTGGACC-3'). The first PCR reaction mixture contained the forward primer and reverse primer 1 at a concentration of 400 nM, 1 × rTaq PCR buffer, 3 mM MgCl₂, 0.625 U of rTaq polymerase, 400 μM of each deoxynucleotide and 100 ng of genomic DNA in a total volume of 20 μl. The PCR reaction conditions were as follows: 95 °C initial denaturation, 25 cycles of amplification (denaturation at 94 °C for 30 s, annealing at 55 °C for 40 s and primer extension at 72 °C for 30 s), and a final extension step at 72 °C for 10 min. One microlitre of the first PCR product was used for the second PCR, which was conducted in a total volume of 25 μl containing 1 × PCR buffer (16.6 mM (NH₄)₂SO₄; 67 mM Tris, pH 8.8; 6.7 mM MgCl₂; and 10 mM β-mercaptoethanol), dNTP (each 1 mM) and primers (0.4 μM each of forward primer and reverse primer 2). The amplifications were performed in a thermal cycler for 35 cycles (30 s at 95 °C, 40 s at 57 °C and 30 s at 72 °C) and were allowed a final 10-min extension at 72 °C. Five microlitres of the PCR product were treated with 1.2 U of shrimp alkaline phosphatase and 6 U of exonuclease in a final volume of 10 μl. The PCR products were incubated at 37 °C for 15 min and then heat-inactivated at 80 °C for 15 min. The purified PCR products were sequenced with BigDye Terminator v3.1 cycle sequencing kit (Applied Biosystems, Foster City, CA, USA) and analysed with a 3730 ABI capillary electrophoresis system (Applied Biosystems). All somatic mutations that were found were further validated via an independent amplification and sequencing experiment. *BRAF* mutations at codon 600 (V600E) were analysed by a real-time PCR-based allelic discrimination method, as previously described (Young *et al*, 2005).

Microsatellite analysis. The microsatellite status of each tumour was determined through an evaluation of five microsatellite markers (D2S123, D5S346, D17S250, BAT25 and BAT26), as standardised by the National Cancer Institute (NCI) (Boland *et al*, 1998). A fluorescent label was added to either the forward or the reverse primer for each marker, and the PCR products were electrophoresed and analysed. We classified MSI status as follows: MSI-high (instability at ≥2 microsatellite markers), MSI-low (instability at 1 marker) or microsatellite stable (MSS, no instability; Ribic *et al*, 2003).

Methylation analysis. After sodium bisulfite conversion of DNA using an EZ DNA methylation kit (Zymo Research, Orange, CA, USA), a MethyLight assay was used to quantify the methylation status of the following eight CIMP markers: *CACNA1G*, *CDKN2A*

(*p16*), *CRABP1*, *IGF2*, *MLH1*, *NEUROG1*, *RUNX3* and *SOCS1*. The primer sequences and PCR conditions have been previously described (Weisenberger *et al*, 2006). M.SssI-treated genomic DNA was used as a reference sample. The percentage of methylated reference (PMR) at a particular locus was calculated by $100 \times (\text{methylated reaction at the GENE/control reaction at the ALU ratio})_{\text{sample}} / (\text{methylated reaction at the GENE/control reaction at the ALU})_{\text{M.SssI-treated placental genomic DNA}}$. The MethyLight assay was performed in triplicate, and the median value was calculated as the representative value of the methylation level of each marker. A CpG island locus with a median PMR >4 was considered to be methylated.

Immunohistochemistry. Tissue microarray (TMA) construction using FFPE tissues from 1370 CRCs was performed. Two different tumour areas in the FFPE tissue samples of each individual CRC case were extracted as two tissue cores (2 mm in diameter) and were transferred to TMA blocks. Immunohistochemical analyses were performed with commercially available antibodies against cytokeratin 7 (CK7; clone OV-TL 12/30, DAKO), cytokeratin 20 (CK20; clone Ks20.8, DAKO) and nuclear protein CDX2 (clone EPR2764Y ready-to-use, CellMarque). For the interpretation of immunohistochemical stain results, cytoplasmic and/or membranous CK7, CK20 and nuclear CDX2 were scored as the percentage of positive tumour cells. The cutoff scores for increased CK7 expression, decreased CK20 expression and decreased CDX2 expression were 10%, 50% and 20%, respectively (Bae *et al*, 2015).

Validation cohort. To validate the prognostic utility of our CIMP classification, we examined an independent cohort of stage III or high-risk stage II CRC patients receiving adjuvant fluoropyrimidine plus oxaliplatin ($N=988$) in two hospitals (Seoul National University Hospital between April 2005 and December 2012 ($N=655$) and Seoul National University Bundang Hospital between January 2007 and December 2012 ($N=333$)). Patients received adjuvant chemotherapy consisting of either FOLFOX-4 ($N=377$), modified FOLFOX-6 ($N=466$) or capecitabine plus oxaliplatin (XELOX; $N=145$). Adjuvant FOLFOX and XELOX were planned for a total of 12 and 8 cycles, respectively. There were no significant differences in clinical outcomes related to the hospitals or protocols (data not shown). The main inclusion criteria for the retrospective selection of patients were as follows:

over 18 years of age, adenocarcinoma histology, stage III or high-risk stage II CRC, complete resection of the tumour with negative margins and the completion of at least six cycles of adjuvant FOLFOX chemotherapy or four cycles of adjuvant XELOX therapy. High-risk stage II CRC was defined if the patient met any one of the following criteria: T4 lesion, obstruction or perforation, lymphovascular invasion, perineural invasion or poorly differentiated histology (Schmoll *et al*, 2012). None of the patients received anti-EGFR or anti-VEGFR treatment adjunct to FOLFOX. In total, 950 patients with complete data for their *KRAS*, *BRAF* and CIMP status were included in the validation set.

Statistical analysis. The clinical database was last updated in July 2016. The cancer-specific survival (CSS) time in the discovery set was calculated from the date of surgery to the date of death by CRC. The relapse-free survival (RFS) time in the validation set was calculated from the first date of chemotherapy to the date of documented relapse. The data from patients who did not experience cancer-specific death or relapse were censored at the date of the last follow-up visit to obtain the CSS and RFS. Categorical variables were compared using χ^2 -tests or Fisher's exact tests, as appropriate. For the comparison of clinicopathologic differences between CIMP subtypes, Kruskal–Wallis tests with *post hoc* Nemenyi tests were employed. Cancer-specific survival and RFS were calculated using a log-rank test with Kaplan–Meier curves. Hazard ratios were calculated using the Cox proportional hazard model. The assumption of proportional hazards was verified by plotting the $\log(-\log(S(t)))$ against the time of the study. In the modelling process, stage, degree of differentiation and history of chemotherapy were adjusted. All statistical tests were two-sided, and statistical significance was defined as $P < 0.05$. When multiple tests were used for a survival analysis, the level of significance was set more conservatively at $P < 0.017$ (0.05/3). All statistical analyses were performed with SAS 9.4 software (Cary, NC, USA) and R software (www.r-project.org).

RESULTS

Molecular alterations in relation to the number of methylated genes. The proportions of molecular alterations in relation to the

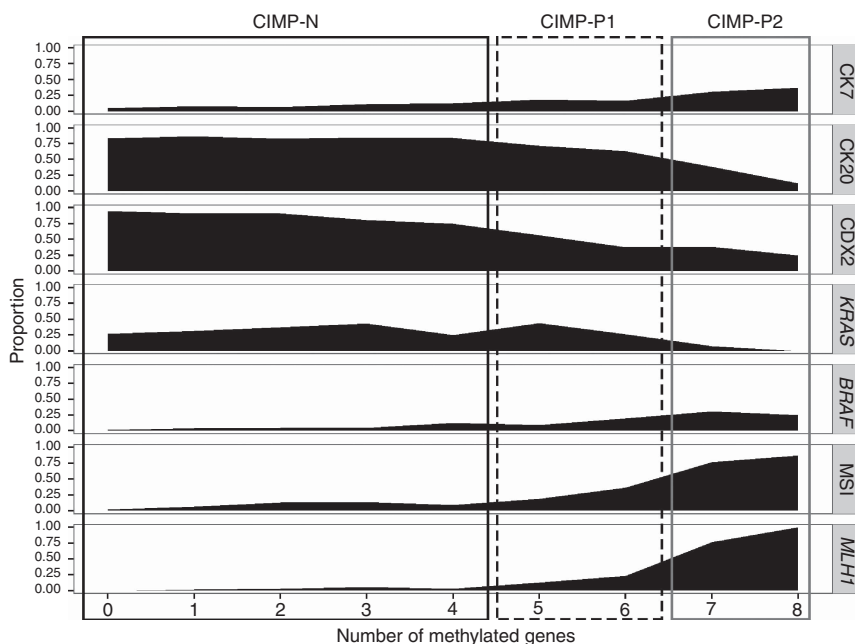


Figure 1. Molecular characteristics of colorectal cancers in the discovery set in relation to the number of methylated genes ($N=1370$).

number of methylated genes in the discovery set are shown in Figure 1. The molecular characteristics of CRCs were not different between CRCs with no methylated genes and CRCs with four methylated genes. However, the frequency of alterations associated with the serrated neoplasia pathway, such as a gain of CK7 expression, decreased CK20 and CDX2 expression, an MSI-high status and *MLH1* methylation, was moderately increased in CRCs with five or six methylated genes compared with CRCs with less than five methylated genes. Colorectal cancers with seven or eight methylated genes showed increased CK7 expression and decreased CK20 and CDX2 expression, were devoid of *KRAS* mutations, had a high rate of *BRAF* mutations, and had MSI-high and positive *MLH1* methylation statuses. Moreover, synchronous *BRAF* mutation and *MLH1* methylation were only observed in CRCs with seven or eight methylated genes (Supplementary Figure S1). Based on these trends, we classified CRCs into CIMP-negative (CIMP-N, 0–4 methylated genes), CIMP-positive 1 (CIMP-P1, 5–6 methylated genes) and CIMP-positive 2 (CIMP-P2, 7–8 methylated genes) categories. Although the five-marker panel introduced by Weisenberger *et al.* showed excellent concordance with the eight CIMP marker panel (the concordance rate between CIMP-P1 and CIMP-P2 in the eight-marker panel and CIMP in the five-marker panel: 99.3%; Supplementary Table S1), we could not discriminate subtypes of CIMP-positive CRCs using Weisenberger's five-marker panel (Supplementary Figure S2).

Clinicopathologic characteristics of newly classified CIMP subtypes. With our refined CIMP classification system, CRCs from 1287 (93.9%), 62 (4.6%) and 21 (1.5%) patients were classified as CIMP-N, CIMP-P1 and CIMP-P2, respectively. Patients with CIMP-P1 CRCs showed more proximal location ($P < 0.001$), higher T category ($P = 0.004$), higher N category ($P < 0.001$) and more advanced stage compared with CIMP-N CRCs, and were found to have poor differentiation, more lymphatic invasion, a higher number of tumour-infiltrating lymphocytes (TILs; $P < 0.001$), greater luminal serration ($P = 0.024$) and mucin production ($P = 0.013$) compared with CIMP-N CRCs. Patients with CIMP-P2 CRCs showed older age at diagnosis compared with CIMP-N CRCs ($P < 0.001$) and CIMP-P1 CRCs ($P = 0.002$) and showed more proximal location ($P < 0.001$), higher number of TILs ($P = 0.001$) and more mucin production ($P < 0.001$) compared with CIMP-N CRCs. Although the differences were not found to be statistically significant, CIMP-P2 CRCs showed a lower frequency of distant metastases ($P = 0.320$) (Tables 1 and 2).

CIMP subtypes and patient survival. To investigate whether the revised CIMP classification system has prognostic implications, we analysed the CSS in the discovery set. In survival analysis, 127 patients who met the inclusion criteria of the validation set were eliminated. During the follow-up period, 223 (17.9%) of 1243 patients reported CSS events, and the median follow-up period was 85.9 months among the survivors. In a univariate analysis, patients with CIMP-P1 CRCs showed a worse 5-year CSS rate than those with CIMP-N ($P < 0.001$) and CIMP-P2 CRCs ($P < 0.001$; Figure 2). And this finding was observed in both adjuvant chemotherapy-treated and non-treated patients (Supplementary Figure S3). In a multivariate analysis, patients with CIMP-P1 CRCs showed a worse 5-year CSS rate than those with CIMP-N CRCs ($P = 0.004$; Table 3). The statistical significance between the CSS rates of patients with CIMP-P1 CRCs and CIMP-P2 CRCs was marginal ($P = 0.090$). Survival rates in relation to two previous classification systems showed similar trend in the discovery set (Supplementary Figure S4).

Validation of the revised CIMP classification system. Survival analysis results from the discovery set could be biased by heterogeneity in cancer stages, adjuvant treatment modalities and

general patient conditions. Therefore, we attempted to validate the prognostic utility of our revised CIMP classification system in an independent cohort of high-risk stage II or stage III CRC patients receiving adjuvant fluoropyrimidine plus oxaliplatin chemotherapy (FOLFOX or XELOX). Clinicopathologic and molecular characteristics of validation set are summarised in Supplementary Table S2. During the follow-up period, 155 (16.3%) out of 950 patients reported RFS events in the validation set. The median follow-up period was 60.9 months among the survivors. Survival rates in relation to two previous classification systems showed a similar trend in the validation set (Supplementary Figure S5). In our revised CIMP classification system, patients with CIMP-P1 CRCs showed a worse 5-year RFS rate than those with CIMP-N ($P = 0.018$) and CIMP-P2 ($P = 0.006$) in a univariate survival analysis (Figure 3). In a multivariate analysis, patients with CIMP-P1 showed a worse 5-year RFS rate than those with CIMP-N ($P = 0.015$) and CIMP-P2 CRCs ($P = 0.038$). Therefore, we conclude that our revised CIMP classification system can predict clinical outcomes of CRC patients. In addition, our data show that CIMP-P1 and CIMP-P2 CRCs exhibit different clinical behaviours. In a subgroup analysis, MSI/CIMP-P1 CRCs showed RFS trends that were more similar to those of MSS/CIMP-P1 CRCs than to those of CIMP-P2 CRCs, although the statistical significance was marginal ($P = 0.094$ for MSS/CIMP-P1 vs CIMP-P2 and $P = 0.046$ for MSI/CIMP-P1 vs CIMP-P2; Supplementary Figure S6). Among the *KRAS*-mutated/pMMR CRCs, patients with CIMP-P1 CRCs showed poorer RFS rates than those with CIMP-N CRCs ($P = 0.095$; Supplementary Figure S7).

DISCUSSION

The CIMP includes a subset of CRCs that exhibit a concordant hypermethylation of multiple genes or CpG island loci, as originally described by Toyota *et al.* (1999). Although there are currently no consensus gene marker panels or marker threshold values for hypermethylation or standardised methodologies, CIMP-positive CRCs are strongly associated with female sex, proximal locations and MSI (Weisenberger *et al.*, 2006; Kim *et al.*, 2009; Ogino *et al.*, 2009). Currently, the five-marker panel (*CACNA1G*, *IGF2*, *NEUROG1*, *RUNX3* and *SOCS1*)-based CIMP classification system introduced by Weisenberger *et al.* and the 8-marker panel (*CACNA1G*, *CDKN2A*, *CRABP1*, *IGF2*, *MLH1*, *NEUROG1*, *RUNX3* and *SOCS1*)-based CIMP classification system that combines the two five-marker panel introduced by Weisenberger *et al.* and Ogino *et al.* are widely used (Weisenberger *et al.*, 2006; Ogino *et al.*, 2009). Because the five-marker panel introduced by Weisenberger *et al.* does not contain *MLH1*, it does not provide a detailed classification of CIMP-positive CRCs. In our present study, we successfully distinguished heterogeneous CIMP-positive CRCs using an eight-marker based CIMP classification system.

Although several studies report poor clinical outcomes for CIMP-positive CRCs, other studies have shown inconsistent results (Shen *et al.*, 2007a; Ogino *et al.*, 2007b, 2009; Barault *et al.*, 2008; Bae *et al.*, 2013; Juo *et al.*, 2014). These inconsistencies may arise from the heterogeneity of CIMP-positive CRCs. Issa's group classified CIMP-positive CRCs into CIMP1 and CIMP2 CRCs by analysing 27 CpG sites in 97 cases of CRC (Shen *et al.*, 2007b). These CIMP1 CRCs showed *MLH1* methylation, frequent *BRAF* mutations, MSI, and rare *KRAS* mutation or *TP53* mutation. The CIMP2 CRCs described by Issa's group show frequent *KRAS* mutations and rarely displayed MSI or *BRAF* and *TP53* mutation. However, there were no significant differences observed in patient age and sex or stage between CIMP1 and CIMP2 CRCs. Our revised CIMP classification system showed similar spectra of molecular characteristics to that of the CIMP classification system described by Issa's group. However, in our present study, CIMP-P1 and

Table 1. Clinicopathologic and molecular characteristics of colorectal cancers from patients in the discovery set (N = 1370)

| | CIMP-N (N = 1287, 93.9%) | CIMP-P1 (N = 62, 4.6%) | CIMP-P2 (N = 21, 1.5%) | P Overall | CIMP-N vs CIMP-P1 | CIMP-N vs CIMP-P2 | CIMP-P1 vs CIMP-P2 |
|-----------------------|-----------------------------|---------------------------|---------------------------|-----------|----------------------|----------------------|-----------------------|
| Age, median (min–max) | 62 (20–93) | 62 (39–80) | 71 (41–83) | 0.001 | > 0.999 | <0.001 | 0.002 |
| Sex | | | | 0.046 | 0.110 | 0.800 | 0.870 |
| Female | 510 (39.6%) | 34 (54.8%) | 10 (52.4%) | | | | |
| Male | 777 (60.4%) | 29 (45.2%) | 10 (47.6%) | | | | |
| Location | | | | <0.001 | <0.001 | <0.001 | 0.077 |
| Proximal colon | 290 (22.5%) | 35 (56.4%) | 17 (80.9%) | | | | |
| Distal colon | 526 (40.9%) | 14 (22.6%) | 4 (19.0%) | | | | |
| Rectum | 471 (36.6%) | 13 (21.0%) | 0 (0.0%) | | | | |
| Gross pattern | | | | 0.517 | 0.800 | 0.760 | 0.960 |
| Fungating | 851 (66.1%) | 38 (61.3%) | 12 (57.1%) | | | | |
| Ulcerative | 436 (33.9%) | 24 (38.7%) | 9 (42.9%) | | | | |
| T category | | | | 0.001 | 0.004 | 0.343 | 0.895 |
| T1 | 56 (4.4%) | 0 (0.0%) | 0 (0.0%) | | | | |
| T2 | 196 (15.2%) | 2 (3.2%) | 0 (0.0%) | | | | |
| T3 | 913 (71.0%) | 47 (75.8%) | 19 (90.5%) | | | | |
| T4 | 121 (9.4%) | 13 (21.0%) | 2 (9.5%) | | | | |
| N category | | | | <0.001 | <0.001 | 0.884 | 0.200 |
| N0 | 665 (51.7%) | 17 (27.4%) | 9 (42.9%) | | | | |
| N1 | 354 (27.5%) | 17 (27.4%) | 8 (38.1%) | | | | |
| N2 | 268 (20.8%) | 28 (45.2%) | 4 (19.0%) | | | | |
| M category | | | | 0.053 | 0.430 | 0.630 | 0.320 |
| M0 | 1075 (83.5%) | 46 (74.2%) | 20 (95.2%) | | | | |
| M1 | 212 (16.5%) | 16 (25.8%) | 1 (4.8%) | | | | |
| Stage | | | | 0.001 | 0.001 | 0.904 | 0.300 |
| I | 205 (15.9%) | 0 (0.0%) | 0 (0.0%) | | | | |
| II | 421 (32.7%) | 17 (27.4%) | 9 (42.9%) | | | | |
| III | 450 (35.0%) | 29 (46.8%) | 11 (52.4%) | | | | |
| IV | 211 (16.4%) | 16 (25.8%) | 1 (4.8%) | | | | |
| KRAS | | | | 0.103 | 0.799 | 0.103 | 0.088 |
| Wild type | 892 (69.3%) | 40 (64.5%) | 20 (95.2%) | | | | |
| Mutated | 395 (30.7%) | 22 (35.5%) | 1 (4.8%) | | | | |
| BRAF | | | | <0.001 | 0.290 | 0.110 | 0.600 |
| Wild type | 1245 (96.7%) | 53 (85.5%) | 15 (71.4%) | | | | |
| Mutated | 42 (3.3%) | 9 (14.5%) | 6 (28.6%) | | | | |
| MSI | | | | <0.001 | 0.008 | <0.001 | 0.001 |
| MSS | 1120 (87.0%) | 41 (66.1%) | 4 (19.1%) | | | | |
| MSI-low | 96 (7.5%) | 4 (6.5%) | 0 (0.0%) | | | | |
| MSI-high | 71 (5.5%) | 17 (27.4%) | 17 (80.9%) | | | | |
| MLH1 | | | | <0.001 | 0.073 | <0.001 | <0.001 |
| Unmethylated | 1270 (98.7%) | 51 (80.9%) | 3 (15.0%) | | | | |
| Methylated | 17 (1.3%) | 11 (17.7%) | 18 (85.7%) | | | | |
| CK7 expression | | | | <0.001 | 0.062 | <0.001 | 0.020 |
| Not expressed | 1197 (93.0%) | 51 (82.3%) | 14 (66.7%) | | | | |
| Expressed | 90 (7.0%) | 11 (17.7%) | 7 (33.3%) | | | | |
| CK20 expression | | | | <0.001 | 0.210 | 0.220 | 0.810 |
| Retained | 1091 (84.7%) | 42 (67.7%) | 6 (28.6%) | | | | |
| Decreased | 196 (15.3%) | 20 (32.3%) | 15 (71.4%) | | | | |
| CDX2 expression | | | | <0.001 | <0.001 | <0.001 | 0.590 |
| Retained | 1172 (91.3%) | 30 (48.4%) | 7 (33.3%) | | | | |
| Decreased | 111 (8.7%) | 32 (51.6%) | 14 (66.7%) | | | | |

Abbreviations: MSI = microsatellite instability; MSS = microsatellite stable.

CIMP-P2 CRCs exhibited several clinicopathologic differences. CIMP-P1 CRCs showed a strong association with aggressive clinicopathologic characteristics, such as nodal metastasis, distant metastasis and lymphovascular invasion. However, TNM stage of CIMP-P2 CRCs was not significantly different with CIMP-N CRCs. Moreover, CIMP-P2 CRCs showed more favourable clinical outcome than CIMP-P1 CRCs in the discovery and validation sets. Differential patient survival between those with CIMP-P1 and CIMP-P2 CRCs highlights the clinical relevance of this subclassification for CIMP-positive CRCs.

In 2007, Ogino *et al* (2007a) set a cutoff of $\geq 6/8$ methylated markers for CIMP-high based on the frequency of MSI-high, *KRAS*

mutation and *BRAF* mutation. In that study, the frequency of MSI-high in CRCs with $\geq 6/8$ methylated markers was greater than that of CRCs with $< 6/8$ methylated markers. Moreover, *BRAF*-mutated/MSI-high CRCs showed $\geq 6/8$ methylated markers. However, the frequency of *KRAS* mutation in CRCs with 0–6/8 methylated markers were greater than 30%, while the frequency of *KRAS* mutation in CRCs in CRCs with 7/8 or 8/8 methylated markers showed rare *KRAS* mutation. In our present study, cutoff of $\geq 5/8$ methylated markers for CIMP (including CIMP-P1 and CIMP-P2) showed excellent concordance with CIMP using the five-marker panel by Weisenberger *et al* (Supplementary Table S1). And CRCs with 7/8 or 8/8 methylated markers showed marked

Table 2. Histologic characteristics of colorectal cancers from patients in the discovery set

| | CIMP-N (N = 1287, 93.9%) | CIMP-P1 (N = 62, 4.6%) | CIMP-P2 (N = 21, 1.5%) | P Overall | CIMP-N vs CIMP-P1 | CIMP-N vs CIMP-P2 | CIMP-P1 vs CIMP-P2 |
|---------------------------------|-----------------------------|---------------------------|---------------------------|-----------|----------------------|----------------------|-----------------------|
| Differentiation | | | | <0.001 | 0.022 | 0.217 | 0.996 |
| Well differentiated | 83 (6.5%) | 2 (3.2%) | 0 (0.0%) | | | | |
| Moderately differentiated | 1165 (90.5%) | 47 (75.8%) | 17 (80.9%) | | | | |
| Poorly differentiated | 39 (3.0%) | 13 (21.0%) | 4 (19.1%) | | | | |
| Lymphatic invasion | | | | <0.001 | <0.001 | 0.260 | 0.680 |
| Absent | 806 (62.6%) | 19 (30.7%) | 9 (42.9%) | | | | |
| Present | 481 (37.4%) | 43 (69.3%) | 12 (57.1%) | | | | |
| Venous invasion | | | | 0.036 | 0.520 | 0.570 | 0.320 |
| Absent | 1122 (87.2%) | 49 (79.0%) | 21 (100.0%) | | | | |
| Present | 165 (12.8%) | 13 (21.0%) | 0 (0.0%) | | | | |
| Perineural invasion | | | | 0.050 | 0.340 | 0.520 | 0.220 |
| Absent | 987 (76.7%) | 41 (66.1%) | 19 (90.5%) | | | | |
| Present | 300 (23.3%) | 21 (33.9%) | 2 (9.5%) | | | | |
| Luminal necrosis | | | | <0.001 | 0.330 | 0.130 | 0.600 |
| Absent | 111 (8.6%) | 12 (19.4%) | 7 (33.3%) | | | | |
| Present | 1176 (91.4%) | 50 (80.6%) | 14 (66.7%) | | | | |
| Tumour budding | | | | 0.038 | 0.120 | 0.900 | 0.800 |
| Absent | 377 (29.3%) | 9 (14.5%) | 5 (23.8%) | | | | |
| Present | 910 (70.7%) | 53 (85.5%) | 16 (76.2%) | | | | |
| Tumour-infiltrating lymphocytes | | | | <0.001 | 0.013 | 0.001 | 0.252 |
| Low (<8/HPF) | 1001 (77.8%) | 35 (56.4%) | 7 (33.3%) | | | | |
| High (≥8/HPF) | 286 (22.2%) | 27 (43.6%) | 14 (66.7%) | | | | |
| Crohn-like lymphoid reaction | | | | 0.118 | 0.790 | 0.510 | 0.800 |
| Absent | 1101 (85.5%) | 50 (80.6%) | 15 (71.4%) | | | | |
| Present | 186 (14.5%) | 12 (19.4%) | 6 (28.6%) | | | | |
| Serration | | | | <0.001 | 0.024 | 0.226 | 0.996 |
| Absent | 1250 (97.1%) | 48 (77.4%) | 16 (76.2%) | | | | |
| Present | 37 (2.9%) | 14 (22.6%) | 5 (23.8%) | | | | |
| Mucin production | | | | <0.001 | 0.013 | <0.001 | 0.048 |
| Absent | 1144 (88.9%) | 42 (66.7%) | 7 (33.3%) | | | | |
| Present | 143 (11.1%) | 21 (33.3%) | 14 (66.7%) | | | | |

Abbreviation: HPF = high-power field.

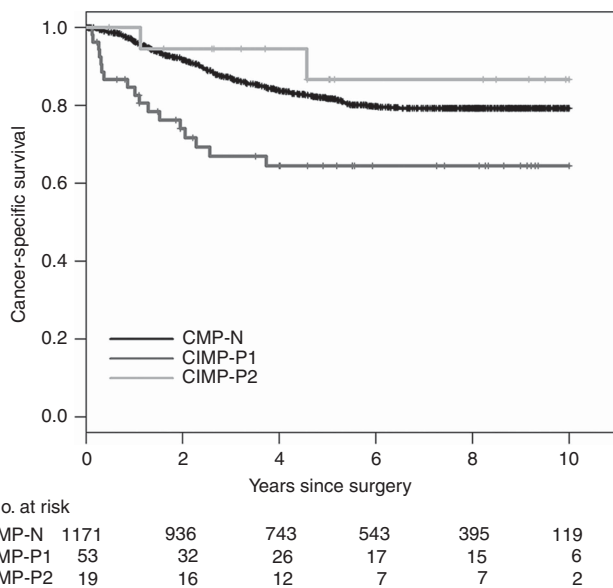


Figure 2. Cancer-specific survival of patients in the discovery set (N = 1243) in relation to the revised CIMP classification system.

difference in frequency of KRAS mutation compared with CRCs with 0–6/8 methylated markers. Moreover, BRAF-mutated/MSI-high CRCs showed 7/8 or 8/8 methylated markers. BRAF-mutated CIMP-P1 CRCs (5/8 or 6/8 methylated markers) did not show MSI-high or MLH1 methylation.

Table 3. Multivariate survival analysis of the discovery and the validation sets

| | HR (95% CI) | P |
|---|------------------|-------|
| 5-year CSS in the discovery set^a | | |
| CIMP-N | 0.47 (0.28–0.78) | 0.004 |
| CIMP-P1 | Reference | – |
| CIMP-P2 | 0.28 (0.07–1.22) | 0.090 |
| 5-year RFS in the validation set^b | | |
| CIMP-N | 0.50 (0.29–0.88) | 0.015 |
| CIMP-P1 | Reference | – |
| CIMP-P2 | 0.21 (0.05–0.92) | 0.038 |

Abbreviations: CI = confidence interval; CSS = cancer-specific survival; HR = hazard ratio; RFS = relapse-free survival.
^aAdjusted for stage, differentiation and chemotherapy status.
^bAdjusted for stage (III vs II, high risk) and differentiation.

Recent advances in the characterisation of TSAs suggest that they can be classified into three distinct molecular subtypes: BRAF-mutated, KRAS-mutated and KRAS/BRAF-wild type (Tsai *et al*, 2014; Wiland *et al*, 2014; Bettington *et al*, 2015). BRAF-mutated TSAs are more common among women, predominantly found in the right colon, and have more extensive methylation and serrated dysplasia than KRAS-mutated or KRAS/BRAF-wild-type TSA (Kim *et al*, 2010; Bettington *et al*, 2015). Therefore, BRAF-mutated TSAs are regarded as a precursor of BRAF-mutated/pMMR/CIMP-positive CRCs, which show most aggressive clinical behaviour (Pai *et al*, 2012; Phipps *et al*, 2015; Sinicrope *et al*, 2015). However, the precursor of KRAS-mutated/CIMP-positive CRC has yet to be conclusively determined, as

several subtypes of conventional adenomas, particularly TVAs, have been found to be precursors of CIMP-positive CRCs. Tubulovillous adenomas shows more methylation compared with tubular adenomas (Kakar *et al*, 2008). Several studies have demonstrated that sTVAs show more methylation than conventional TVAs (Tsai *et al*, 2014; Bettington *et al*, 2016). Because *BRAF*-wild-type TSAs and sTVAs show high frequencies of *KRAS* mutations, it is nearly impossible to distinguish between them as the potential precursors of *BRAF*-wild-type CIMP-positive CRCs (Bettington *et al*, 2016). Moreover, Farchoukh *et al* (2016) reported that *BRAF*-wild type/*MLH1*-methylated CRCs harbour *KRAS* mutations and arise from conventional adenomas. Based on recent findings regarding the serrated neoplasia pathway, we can make predictions about the putative precursors of the various CIMP-positive CRC subtypes (Figure 4).

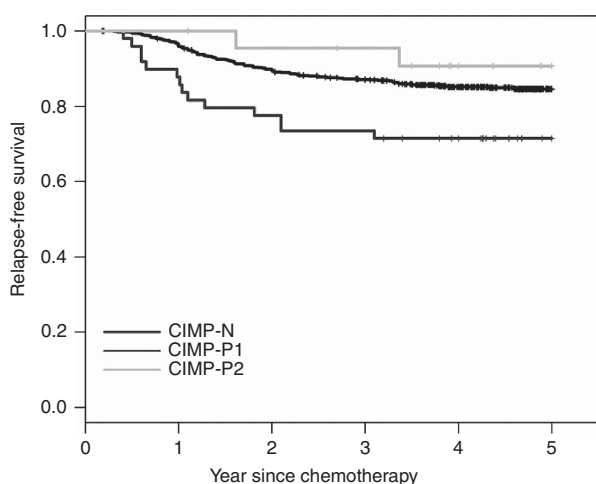
Prospective clinical trials examining adjuvant FOLFOX and recent other two studies showed the adverse prognostic effect of *KRAS* mutations on CRC prognoses (Hutchins *et al*, 2011; Phipps *et al*, 2015; Sinicrope *et al*, 2015; Taieb *et al*, 2016). However, it is of interest whether the clinical outcomes of *KRAS*-mutated CRCs differ according to their methylation status. In a study by Phipps *et al* (2015), the authors excluded 37 *KRAS*-mutated CIMP-

positive CRCs in their survival analysis. A study by Sinicrope *et al* (2015) only analysed the influence of *MLH1* methylation status. Therefore, we investigated the effect of the methylation status on *KRAS*-mutated CRC prognoses. We found that *KRAS*-mutated/CIMP-positive CRCs showed worse clinical outcomes than *KRAS*-mutated/CIMP-negative CRCs in the validation set. This finding suggests that CRCs arising from *KRAS*-mutated TSAs or sTVAs are more aggressive than *KRAS*-mutated/CIMP-negative CRCs arising from conventional adenomas.

In our present study, CIMP-P1 CRCs were categorised as MSS/CIMP-P1 or MSI/CIMP-P1 CRCs. Because MSI/CIMP-P1 CRCs showed a high frequency of *MLH1* methylation, it is of interest whether clinical outcomes of MSI/CIMP-P1 CRCs are more similar to those of MSS/CIMP-P1 or CIMP-P2 CRCs. Although the statistical significance was marginal, patients with MSI/CIMP-P1 CRC showed RFS that were similar to those of patients with MSS/CIMP-P1 CRC in the validation set. Recently, Farchoukh *et al* (2016) found no significant differences in DFS between patients with *MLH1*-hypermethylated/*BRAF* wild-type CRC and *MLH1*-hypermethylated/*BRAF*-mutated CRCs. Therefore, we can presume that the clinical outcome of patients with CIMP-positive CRC is more strongly influenced by the level of methylation than MMR or *BRAF* mutation status.

Special consideration is required for the selection of chemotherapeutic agents for the treatment of CIMP-P1 CRCs. In our validation set, CIMP-P1 CRCs that received oxaliplatin-based adjuvant chemotherapy showed worst RFS among CIMP subtypes. Recently, we reported that metastatic CIMP-high CRCs showed poor overall survival when treated with FOLFOX (Cha *et al*, 2016). In that study, all of the CIMP-high CRC showed methylation of five or six markers, which corresponds to the CIMP-P1 in the present study. Additionally, Zhang *et al* (2016) reported that FOLFOX treatment followed by an irinotecan-based regimen shows unfavourable outcomes compared with the irinotecan-based regimen followed by FOLFOX treatment in metastatic CIMP-positive CRCs. Because stage III CIMP-positive CRCs can benefit from joint use of irinotecan with 5-FU (IFL) compared with 5-FU and leukovorin (FL), the CIMP could be used as a predictive marker for selecting oxaliplatin or irinotecan as an adjuvant or palliative chemotherapeutic agent for CRC treatment (Shiovitz *et al*, 2014).

Our discovery set comes with several limitations. First, our data were collected retrospectively at a single institution and from patients that received a variety of different post-operative treatments. Therefore, we aimed to validate the results from the discovery set in a validation set that controlled for tumour stage, performance status and adjuvant modality, and this set was collected from two institutions using the same patient care strategy.



| No. at risk | 0 | 1 | 2 | 3 | 4 | 5 |
|-------------|-----|-----|-----|-----|-----|-----|
| CIMP-N | 878 | 839 | 774 | 735 | 599 | 393 |
| CIMP-P1 | 49 | 43 | 38 | 36 | 30 | 20 |
| CIMP-P2 | 23 | 23 | 21 | 20 | 14 | 12 |

Figure 3. Relapse-free survival of patients in the validation set (N = 950) in relation to the revised CIMP classification system.

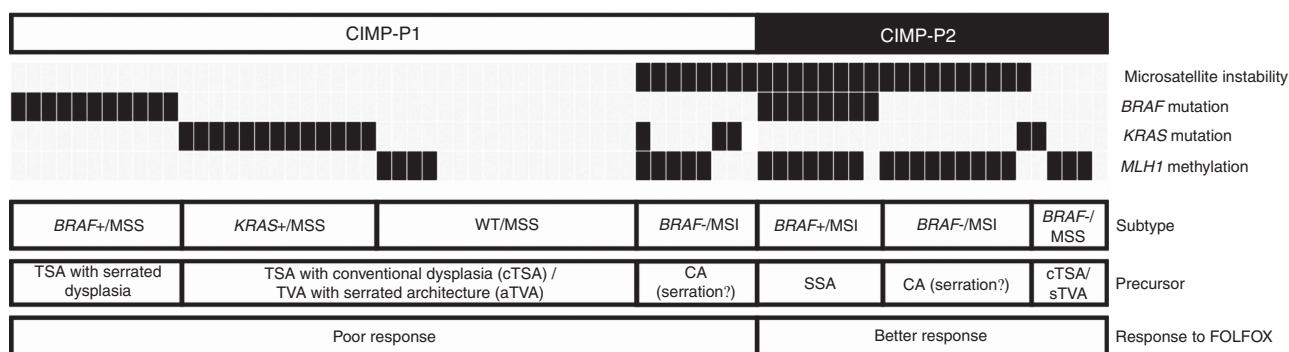


Figure 4. Molecular sub-classification of CIMP-positive colorectal cancers and their putative precursors. CA = conventional adenoma; MSS = microsatellite stable; MSI = microsatellite instability; SSA = sessile serrated adenoma; TSA = traditional serrated adenoma; TVA = tubulovillous adenoma.

The results from the analysis of the discovery set were consistently reproduced by the analysis of the validation set, substantiating the results of our present study. Second, our study showed the lower frequency of *KRAS* mutation, *BRAF* mutation and MSI-high compared with those of Western countries. The frequencies of those molecular alterations in CRCs of Eastern Asia are lower than Western countries (Yuen *et al*, 2002; Nagasaka *et al*, 2004; Jeon *et al*, 2008; Shin *et al*, 2014). This discrepancy might originate from ethnic or environmental difference. However, we could not rule out the possibility of selection bias originated from hospital-based study.

CONCLUSION

CIMP-positive CRCs can be categorised as CIMP-P1 or CIMP-P2 based on the number of methylated markers. CIMP-P1 CRCs are more aggressive than CIMP-N and CIMP-P2 CRCs. Finally, our revised CIMP classification system reflects the biologic behaviours of multiple serrated precursors.

ACKNOWLEDGEMENTS

This work was supported by a grant from the National Research Foundation (NRF) funded by the Korean Ministry of Science, ICT and Future Planning (2011-0030049; 2016M3A9B6026921), a grant (2009-0093820) from the Priority Research Centers Program through the NRF, a grant from the SNUH Research Fund (0420150260 (2015-1174)) and a grant from the Korea Health Technology R&D Project through the Korea Health Industry Development Institute funded by the Korean Ministry of Health and Welfare (HI14C1277).

CONFLICT OF INTEREST

The authors declare no conflict of interest.

REFERENCES

- Andre T, de Gramont A, Vernerey D, Chibaudel B, Bonnetain F, Tijeras-Raballand A, Scriver A, Hickish T, Taberero J, Van Laethem JL, Banzi M, Maertense E, Shmueli E, Carlsson GU, Scheithauer W, Papamichael D, Moehler M, Landolfi S, Demetter P, Colote S, Tournigand C, Louvet C, Duval A, Flejou JF, de Gramont A (2015) Adjuvant fluorouracil, leucovorin, and oxaliplatin in stage II to III colon cancer: updated 10-year survival and outcomes according to *BRAF* mutation and mismatch repair status of the MOSAIC Study. *J Clin Oncol* **33**(35): 4176–4187.
- Bae JM, Kim JH, Cho NY, Kim TY, Kang GH (2013) Prognostic implication of the CpG island methylator phenotype in colorectal cancers depends on tumour location. *Br J Cancer* **109**(4): 1004–1012.
- Bae JM, Lee TH, Cho NY, Kim TY, Kang GH (2015) Loss of *CDX2* expression is associated with poor prognosis in colorectal cancer patients. *World J Gastroenterol* **21**(5): 1457–1467.
- Barault L, Charon-Barra C, Jooste V, de la Vega MF, Martin L, Roignot P, Rat P, Bouvier AM, Laurent-Puig P, Faivre J, Chapusot C, Piard F (2008) Hypermethylator phenotype in sporadic colon cancer: study on a population-based series of 582 cases. *Cancer Res* **68**(20): 8541–8546.
- Bettington M, Walker N, Rosty C, Brown I, Clouston A, McKeone D, Pearson SA, Klein K, Leggett B, Whitehall V (2016) Serrated tubulovillous adenoma of the large intestine. *Histopathology* **68**(4): 578–587.
- Bettington ML, Walker NI, Rosty C, Brown IS, Clouston AD, McKeone DM, Pearson SA, Klein K, Leggett BA, Whitehall VL (2015) A clinicopathological and molecular analysis of 200 traditional serrated adenomas. *Mod Pathol* **28**(3): 414–427.
- Boland CR, Goel A (2010) Microsatellite instability in colorectal cancer. *Gastroenterology* **138**(6): 2073–2087 e3.
- Boland CR, Thibodeau SN, Hamilton SR, Sidransky D, Eshleman JR, Burt RW, Meltzer SJ, Rodriguez-Bigas MA, Fodde R, Ranzani GN, Srivastava S (1998) A National Cancer Institute Workshop on Microsatellite Instability for cancer detection and familial predisposition: development of international criteria for the determination of microsatellite instability in colorectal cancer. *Cancer Res* **58**(22): 5248–5257.
- Cha Y, Kim KJ, Han SW, Rhee YY, Bae JM, Wen X, Cho NY, Lee DW, Lee KH, Kim TY, Oh DY, Im SA, Bang YJ, Jeong SY, Park KJ, Kang GH, Kim TY (2016) Adverse prognostic impact of the CpG island methylator phenotype in metastatic colorectal cancer. *Br J Cancer* **115**(2): 164–171.
- Farchouk L, Kuan SF, Dudley B, Brand R, Nikiforova M, Pai RK (2016) *MLH1*-deficient colorectal carcinoma with wild-type *BRAF* and *MLH1* promoter hypermethylation harbor *KRAS* mutations and arise from conventional adenomas. *Am J Surg Pathol* **40**(10): 1390–1399.
- Fearon ER, Vogelstein B (1990) A genetic model for colorectal tumorigenesis. *Cell* **61**(5): 759–767.
- Fujita K, Yamamoto H, Matsumoto T, Hirahashi M, Gushima M, Kishimoto J, Nishiyama K, Taguchi T, Yao T, Oda Y (2011) Sessile serrated adenoma with early neoplastic progression: a clinicopathologic and molecular study. *Am J Surg Pathol* **35**(2): 295–304.
- Hinoue T, Weisenberger DJ, Lange CP, Shen H, Byun HM, Van Den Berg D, Malik S, Pan F, Noushmehr H, van Dijk CM, Tollenaar RA, Laird PW (2012) Genome-scale analysis of aberrant DNA methylation in colorectal cancer. *Genome Res* **22**(2): 271–282.
- Hutchins G, Southward K, Handley K, Magill L, Beaumont C, Stahlschmidt J, Richman S, Chambers P, Seymour M, Kerr D, Gray R, Quirke P (2011) Value of mismatch repair, *KRAS*, and *BRAF* mutations in predicting recurrence and benefits from chemotherapy in colorectal cancer. *J Clin Oncol* **29**(10): 1261–1270.
- Jass JR (2007) Classification of colorectal cancer based on correlation of clinical, morphological and molecular features. *Histopathology* **50**(1): 113–130.
- Jeon CH, Lee HI, Shin IH, Park JW (2008) Genetic alterations of *APC*, *K-ras*, *p53*, *MSI*, and *MAGE* in Korean colorectal cancer patients. *Int J Colorectal Dis* **23**(1): 29–35.
- Juo YY, Johnston FM, Zhang DY, Juo HH, Wang H, Pappou EP, Yu T, Easwaran H, Baylin S, van Engeland M, Ahuja N (2014) Prognostic value of CpG island methylator phenotype among colorectal cancer patients: a systematic review and meta-analysis. *Ann Oncol* **25**(12): 2314–2327.
- Kakar S, Deng G, Cun L, Sahai V, Kim YS (2008) CpG island methylation is frequently present in tubulovillous and villous adenomas and correlates with size, site, and villous component. *Hum Pathol* **39**(1): 30–36.
- Kim JH, Bae JM, Cho NY, Kang GH (2016) Distinct features between *MLH1*-methylated and unmethylated colorectal carcinomas with the CpG island methylator phenotype: implications in the serrated neoplasia pathway. *Oncotarget* **7**(12): 14095–14111.
- Kim JH, Shin SH, Kwon HJ, Cho NY, Kang GH (2009) Prognostic implications of CpG island hypermethylator phenotype in colorectal cancers. *Virchows Arch* **455**(6): 485–494.
- Kim KM, Lee EJ, Kim YH, Chang DK, Odze RD (2010) *KRAS* mutations in traditional serrated adenomas from Korea herald an aggressive phenotype. *Am J Surg Pathol* **34**(5): 667–675.
- Leggett B, Whitehall V (2010) Role of the serrated pathway in colorectal cancer pathogenesis. *Gastroenterology* **138**(6): 2088–2100.
- Nagasaka T, Sasamoto H, Notohara K, Cullings HM, Takeda M, Kimura K, Kambara T, MacPhee DG, Young J, Leggett BA, Jass JR, Tanaka N, Matsubara N (2004) Colorectal cancer with mutation in *BRAF*, *KRAS*, and wild-type with respect to both oncogenes showing different patterns of DNA methylation. *J Clin Oncol* **22**(22): 4584–4594.
- Network TCGA (2012) Comprehensive molecular characterization of human colon and rectal cancer. *Nature* **487**(7407): 330–337.
- Ogino S, Kawasaki T, Kirkner GJ, Kraft P, Loda M, Fuchs CS (2007a) Evaluation of markers for CpG island methylator phenotype (CIMP) in colorectal cancer by a large population-based sample. *J Mol Diagn* **9**(3): 305–314.
- Ogino S, Meyerhardt JA, Kawasaki T, Clark JW, Ryan DP, Kulke MH, Enzinger PC, Wolpin BM, Loda M, Fuchs CS (2007b) CpG island methylation, response to combination chemotherapy, and patient survival in advanced microsatellite stable colorectal carcinoma. *Virchows Arch* **450**(5): 529–537.

- Ogino S, Nosho K, Kirkner GJ, Kawasaki T, Meyerhardt JA, Loda M, Giovannucci EL, Fuchs CS (2009) CpG island methylator phenotype, microsatellite instability, BRAF mutation and clinical outcome in colon cancer. *Gut* **58**(1): 90–96.
- Pai RK, Jayachandran P, Koong AC, Chang DT, Kwok S, Ma L, Arber DA, Balise RR, Tubbs RR, Shadrach B, Pai RK (2012) BRAF-mutated, microsatellite-stable adenocarcinoma of the proximal colon: an aggressive adenocarcinoma with poor survival, mucinous differentiation, and adverse morphologic features. *Am J Surg Pathol* **36**(5): 744–752.
- Phipps AI, Limburg PJ, Baron JA, Burnett-Hartman AN, Weisenberger DJ, Laird PW, Sinicrope FA, Rosty C, Buchanan DD, Potter JD, Newcomb PA (2015) Association between molecular subtypes of colorectal cancer and patient survival. *Gastroenterology* **148**(1): 77–87.e2.
- Rex DK, Ahnen DJ, Baron JA, Batts KP, Burke CA, Burt RW, Goldblum JR, Guillem JG, Kahi CJ, Kalady MF, O'Brien MJ, Odze RD, Ogino S, Parry S, Snover DC, Torlakovic EE, Wise PE, Young J, Church J (2012) Serrated lesions of the colorectum: review and recommendations from an expert panel. *Am J Gastroenterol* **107**(9): 1315–1329quiz 1314, 1330.
- Ribic CM, Sargent DJ, Moore MJ, Thibodeau SN, French AJ, Goldberg RM, Hamilton SR, Laurent-Puig P, Gryfe R, Shepherd LE, Tu D, Redston M, Gallinger S (2003) Tumor microsatellite-instability status as a predictor of benefit from fluorouracil-based adjuvant chemotherapy for colon cancer. *N Engl J Med* **349**(3): 247–257.
- Schmoll HJ, Van Cutsem E, Stein A, Valentini V, Glimelius B, Haustermans K, Nordlinger B, van de Velde CJ, Balmana J, Regula J, Nagtegaal ID, Beets-Tan RG, Arnold D, Ciardiello F, Hoff P, Kerr D, Kohne CH, Labianca R, Price T, Scheithauer W, Sobrero A, Tabernero J, Aderka D, Barroso S, Bodoky G, Douillard JY, El Ghazaly H, Gallardo J, Garin A, Glynne-Jones R, Jordan K, Meshcheryakov A, Papamichail D, Pfeiffer P, Souglakos I, Turhal S, Cervantes A (2012) ESMO Consensus Guidelines for management of patients with colon and rectal cancer: a personalized approach to clinical decision making. *Ann Oncol* **23**(10): 2479–2516.
- Shen L, Catalano PJ, Benson 3rd AB, O'Dwyer P, Hamilton SR, Issa JP (2007a) Association between DNA methylation and shortened survival in patients with advanced colorectal cancer treated with 5-fluorouracil based chemotherapy. *Clin Cancer Res* **13**(20): 6093–6098.
- Shen L, Toyota M, Kondo Y, Lin E, Zhang L, Guo Y, Hernandez NS, Chen X, Ahmed S, Konishi K, Hamilton SR, Issa JP (2007b) Integrated genetic and epigenetic analysis identifies three different subclasses of colon cancer. *Proc Natl Acad Sci USA* **104**(47): 18654–18659.
- Shin US, Cho SS, Moon SM, Park SH, Jee SH, Jung EJ, Hwang DY (2014) Is microsatellite instability really a good prognostic factor of colorectal cancer? *Ann Coloproctol* **30**(1): 28–34.
- Shiovitz S, Bertagnoli MM, Renfro LA, Nam E, Foster NR, Dzieciatkowski S, Luo Y, Lao VV, Monnat Jr RJ, Emond MJ, Maizels N, Niedzwiecki D, Goldberg RM, Saltz LB, Venook A, Warren RS, Grady WM (2014) CpG island methylator phenotype is associated with response to adjuvant irinotecan-based therapy for stage III colon cancer. *Gastroenterology* **147**(3): 637–645.
- Sinicrope FA, Shi Q, Smyrk TC, Thibodeau SN, Dienstmann R, Guinney J, Bot BM, Tejpar S, Delorenzi M, Goldberg RM, Mahoney M, Sargent DJ, Alberts SR (2015) Molecular markers identify subtypes of stage III colon cancer associated with patient outcomes. *Gastroenterology* **148**(1): 88–99.
- Taieb J, Zaanan A, Le Malicot K, Julie C, Blons H, Mineur L, Bennouna J, Tabernero J, Mini E, Folprecht G, Van Laethem JL, Lepage C, Emile JF, Laurent-Puig P (2016) Prognostic effect of BRAF and KRAS mutations in patients with stage III colon cancer treated with leucovorin, fluorouracil, and oxaliplatin with or without cetuximab: a post hoc analysis of the PETACC-8 trial. *JAMA Oncol* **2**(5): 643–652.
- Toyota M, Ahuja N, Ohe-Toyota M, Herman JG, Baylin SB, Issa JP (1999) CpG island methylator phenotype in colorectal cancer. *Proc Natl Acad Sci USA* **96**(15): 8681–8686.
- Tsai JH, Liao JY, Lin YL, Lin LI, Cheng YC, Cheng ML, Jeng YM (2014) Traditional serrated adenoma has two pathways of neoplastic progression that are distinct from the sessile serrated pathway of colorectal carcinogenesis. *Mod Pathol* **27**(10): 1375–1385.
- Weisenberger DJ, Siegmund KD, Campan M, Young J, Long TI, Faasse MA, Kang GH, Widschwendter M, Weener D, Buchanan D, Koh H, Simms L, Barker M, Leggett B, Levine J, Kim M, French AJ, Thibodeau SN, Jass J, Haile R, Laird PW (2006) CpG island methylator phenotype underlies sporadic microsatellite instability and is tightly associated with BRAF mutation in colorectal cancer. *Nat Genet* **38**(7): 787–793.
- Wiland HO, Shadrach B, Allende D, Carver P, Goldblum JR, Liu X, Patil DT, Rybicki LA, Pai RK (2014) Morphologic and molecular characterization of traditional serrated adenomas of the distal colon and rectum. *Am J Surg Pathol* **38**(9): 1290–1297.
- Young J, Barker MA, Simms LA, Walsh MD, Biden KG, Buchanan D, Buttenshaw R, Whitehall VL, Arnold S, Jackson L, Kambara T, Spring KJ, Jenkins MA, Walker GJ, Hopper JL, Leggett BA, Jass JR (2005) Evidence for BRAF mutation and variable levels of microsatellite instability in a syndrome of familial colorectal cancer. *Clin Gastroenterol Hepatol* **3**(3): 254–263.
- Yuen ST, Davies H, Chan TL, Ho JW, Bignell GR, Cox C, Stephens P, Edkins S, Tsui WW, Chan AS, Futreal PA, Stratton MR, Wooster R, Leung SY (2002) Similarity of the phenotypic patterns associated with BRAF and KRAS mutations in colorectal neoplasia. *Cancer Res* **62**(22): 6451–6455.
- Zhang X, Shimodaira H, Soeda H, Komine K, Takahashi H, Ouchi K, Inoue M, Takahashi M, Takahashi S, Ishioka C (2016) CpG island methylator phenotype is associated with the efficacy of sequential oxaliplatin- and irinotecan-based chemotherapy and EGFR-related gene mutation in Japanese patients with metastatic colorectal cancer. *Int J Clin Oncol* **21**(6): 1091–1101.



This work is licensed under the Creative Commons Attribution-Non-Commercial-Share Alike 4.0 International License. To view a copy of this license, visit <http://creativecommons.org/licenses/by-nc-sa/4.0/>

© The Author(s) named above 2017

Supplementary Information accompanies this paper on British Journal of Cancer website (<http://www.nature.com/bjc>)