



# Excess BMI in Childhood: A Modifiable Risk Factor for Type 1 Diabetes Development?

*Diabetes Care* 2017;40:698–701 | DOI: 10.2337/dc16-2331

Christine Therese Ferrara,<sup>1</sup>  
Susan Michelle Geyer,<sup>2</sup> Yuk-Fun Liu,<sup>3</sup>  
Carmella Evans-Molina,<sup>4</sup>  
Ingrid M. Libman,<sup>5</sup> Rachel Besser,<sup>6</sup>  
Dorothy J. Becker,<sup>5</sup> Henry Rodriguez,<sup>2</sup>  
Antoinette Moran,<sup>7</sup> Stephen E. Gitelman,<sup>1</sup>  
Maria J. Redondo,<sup>8</sup> and the Type 1  
Diabetes TrialNet Study Group\*

## OBJECTIVE

We aimed to determine the effect of elevated BMI over time on the progression to type 1 diabetes in youth.

## RESEARCH DESIGN AND METHODS

We studied 1,117 children in the TrialNet Pathway to Prevention cohort (autoantibody-positive relatives of patients with type 1 diabetes). Longitudinally accumulated BMI above the 85th age- and sex-adjusted percentile generated a cumulative excess BMI (ceBMI) index. Recursive partitioning and multivariate analyses yielded sex- and age-specific ceBMI thresholds for greatest type 1 diabetes risk.

## RESULTS

Higher ceBMI conferred significantly greater risk of progressing to type 1 diabetes. The increased diabetes risk occurred at lower ceBMI values in children <12 years of age compared with older subjects and in females versus males.

## CONCLUSIONS

Elevated BMI is associated with increased risk of diabetes progression in pediatric autoantibody-positive relatives, but the effect varies by sex and age.

Studies report conflicting data regarding the roles of weight and obesity on type 1 diabetes risk (1–5). Most studies limit analyses to BMI at a single time point prior to diabetes diagnosis. Further, the influence of sex and age remain unexplored. We evaluated the longitudinal influence of cumulative excess BMI (ceBMI), a calculated aggregate measure of BMI elevation over time, on progression to type 1 diabetes in children of the TrialNet Pathway to Prevention (PTP) cohort.

## RESEARCH DESIGN AND METHODS

The TrialNet PTP study screened 3,285 individuals from March 2004 to June 2014 and monitored them for progression to diabetes through November 2015 (6). This analysis included participants aged 2–18 years at their first BMI evaluation with  $\geq 2$  BMI measurements before 20 years of age ( $n = 1,117$ ). Baseline was defined as the first visit with a BMI evaluation.

Standard protocol oral glucose tolerance test and HbA<sub>1c</sub> were obtained at each visit (7). Diabetes was diagnosed according to American Diabetes Association criteria (8). HbA<sub>1c</sub>  $\geq 6.5\%$  was part of confirmatory testing (9).

BMI was calculated as weight (kg)/height (m<sup>2</sup>). ceBMI was adopted to measure persistent BMI elevation  $\geq 85$ th percentile for age- and sex-adjusted BMI. Weighted sums of the differences between actual BMI and the corresponding 85th percentile at each BMI assessment were calculated (10,11) and then further annualized to

<sup>1</sup>University of California, San Francisco, San Francisco, CA

<sup>2</sup>University of South Florida, Tampa, FL

<sup>3</sup>King's College London, London, U.K.

<sup>4</sup>Indiana University School of Medicine, Indianapolis, IN

<sup>5</sup>Children's Hospital of Pittsburgh of UPMC, Pittsburgh, PA

<sup>6</sup>Oxford University Hospitals NHS Foundation Trust, Oxford, U.K.

<sup>7</sup>Department of Pediatric Endocrinology, University of Minnesota Masonic Children's Hospital, Minneapolis, MN

<sup>8</sup>Baylor College of Medicine, Houston, TX

Corresponding author: Christine Therese Ferrara, christine.ferrara@ucsf.edu.

Received 1 November 2016 and accepted 30 January 2017.

This article contains Supplementary Data online at <http://care.diabetesjournals.org/lookup/suppl/doi:10.2337/dc16-2331/-/DC1>.

\*A complete list of the Type 1 Diabetes TrialNet Study Group can be found in the Supplementary Data online.

© 2017 by the American Diabetes Association. Readers may use this article as long as the work is properly cited, the use is educational and not for profit, and the work is not altered. More information is available at <http://www.diabetesjournals.org/content/license>.

accommodate irregular timing of BMI assessment in relation to time to diabetes or censoring (for calculation of ceBMI, see Supplementary Data). For individuals who progressed to diabetes, the last BMI used was  $\geq 6$  months prior to diagnosis date.

### Statistical Considerations

Pearson  $\chi^2$  tests, Fisher exact tests, Wilcoxon rank-sum tests, Kruskal-Wallis tests, and nonparametric Spearman rank correlation tests were used as appropriate. Analyses of BMI were based on relevant Centers for Disease Control and Prevention cutoffs ([www.cdc.gov/nccdphp/dnpao/growthcharts/resources/sas.htm](http://www.cdc.gov/nccdphp/dnpao/growthcharts/resources/sas.htm)). ceBMI was analyzed as both a continuous measure and a dichotomized measure. ceBMI  $\geq 0$  indicated that an individual's average BMI was  $\geq 85$ th age- and sex-adjusted percentile during the observation period.

The primary outcome was time to type 1 diabetes (i.e., time from first BMI evaluation to date of diagnosis). Those not diagnosed with type 1 diabetes were censored at their last follow-up or enrollment in a prevention trial. Kaplan-Meier methods assessed distribution differences in the time to type 1 diabetes among groups, and Cox proportional hazards models evaluated the influence of continuous and categorical variables. Assumptions for proportionality of hazards were tested. All time-to-event analyses were adjusted for age, sex, and antibody number confirmed at screening (single vs. multiple). Additional adjustment for the presence of the highest-risk HLA genotype (i.e., DR3-DQ2/DR4-DQ8) did not alter significance of the results. Recursive partitioning analysis was used to identify critical cut points for ceBMI and age at first BMI evaluation for influence on diabetes development and risk stratification of time-to-event (12) (rpart package in R).

Inferential tests were two-sided. Any  $P$  values  $< 0.05$  (0.1 for interaction terms) were considered significant. All analyses were conducted in R (version 3.1.2; Windows; Microsoft).

### RESULTS

We analyzed a total of 1,117 pediatric subjects of the PTP cohort between the ages of 2 and 18 years (median: 10.1 years; interquartile range [IQR]: 6.7–13.3 years), of whom 20% ( $n =$

220) developed diabetes. Median first BMI percentile was 63.8% (IQR: 36.6–84.8%), with 14% overweight (BMI  $\geq 85$ th to  $< 95$ th percentile) and 11% obese ( $\geq 95$ th percentile). ceBMI ranged from  $-10$  to  $15.1$  kg/m<sup>2</sup> (median:  $-1.86$  kg/m<sup>2</sup>; IQR:  $-3.6$  to  $-0.03$  m<sup>2</sup>/kg). Nearly 25% of subjects had ceBMI values  $\geq 0$  kg/m<sup>2</sup> representing sustained excess BMI above the Centers for Disease Control and Prevention thresholds of overweight/obesity (Supplementary Table 1).

Higher ceBMI was associated with significantly greater risk of progression to type 1 diabetes, which persisted after adjusting for age at first BMI evaluation, antibody number, and sex. For each 1-kg/m<sup>2</sup> increase in ceBMI, there was a 6.3% increased relative risk of type 1 diabetes progression (hazard ratio [HR]: 1.063 [95% CI 1.03–1.10];  $P = 0.0006$ ). Individuals who, on average, were persistently overweight or obese (ceBMI  $\geq 0$ ) had a 63% greater type 1 diabetes risk, adjusted for age, sex, and antibody number (HR: 1.63 [95% CI: 1.22–2.18];  $P = 0.0009$ ).

Age at baseline was a significant independent risk factor for type 1 diabetes progression (HR: 0.94;  $P = 0.0006$ ), adjusted for ceBMI, sex, and antibody status. A significant interaction between age and sex together with ceBMI in relation to time to diabetes ( $P = 0.072$ ) triggered investigation of age- and sex-specific strata. By recursive partitioning algorithms, we first identified 12 years as the age cut point that best discriminated risk for type 1 diabetes progression for the combined cohort and for males or females independently. Recursive partitioning analysis as well as multivariable model-based diagnostics identified cut points for ceBMI that best differentiated risk for disease progression (ceBMI diabetes risk threshold). The ceBMI diabetes risk threshold was lower in children  $< 12$  years, regardless of sex ( $-1.4$  kg/m<sup>2</sup>), than in older children ( $4.6$  kg/m<sup>2</sup>). That is, the increase in type 1 diabetes risk occurs at lower levels of sustained excess BMI in younger children.

Males overall had a higher ceBMI diabetes risk threshold influencing progression to type 1 diabetes than females, suggesting an increased sensitivity to BMI in female subjects. Males  $\geq 12$  years of age were least affected by ceBMI and had a risk threshold ( $5$  kg/m<sup>2</sup>) much higher than the threshold defining

overweight/obese. In contrast, females  $< 12$  years old appeared to be most influenced by body weight, as the ceBMI risk threshold was  $-1.35$  kg/m<sup>2</sup>, suggesting that BMI percentiles below the overweight/obese threshold still increase type 1 diabetes risk in this subgroup (Fig. 1).

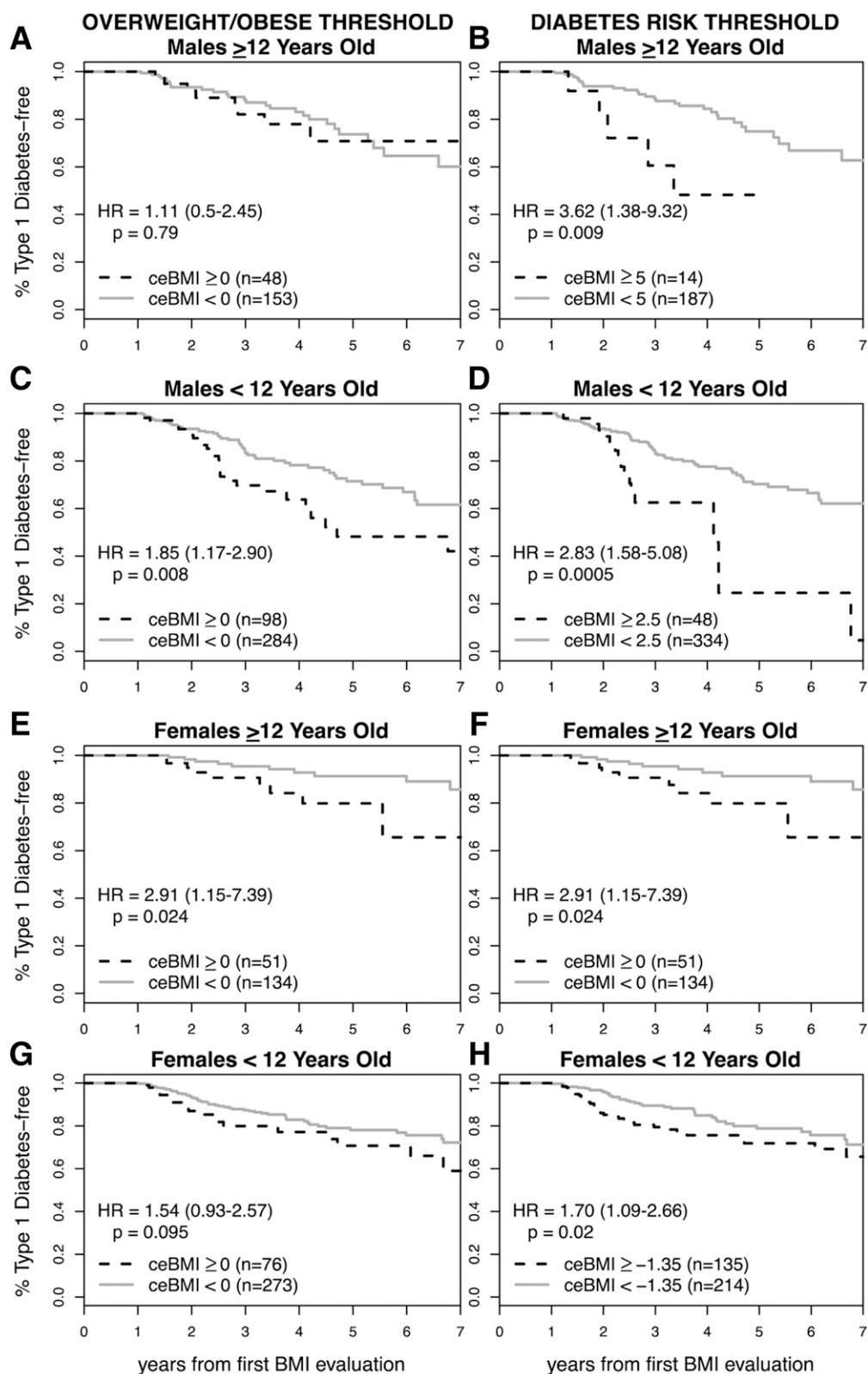
### CONCLUSIONS

Our study is the first to apply ceBMI methodology to type 1 diabetes, and results support that sustained elevation of BMI is associated with type 1 diabetes progression, with effects varying by sex and age. Older age diluted the effect of elevated BMI on type 1 diabetes progression as seen by a lower ceBMI diabetes risk threshold in individuals  $< 12$  years old compared with those  $\geq 12$  years old. This age-dependent effect of sustained excess BMI on type 1 diabetes progression is present in both sexes, but females were more sensitive to the effect of elevated BMI.

These findings lend insight into prior studies that reported inconsistent results of the effects of BMI on type 1 diabetes risk (2–5). Beyond incorporation of longitudinal data, ceBMI measurement offers the additional advantage of an unrestricted upper limit compared with BMI percentile and may offer greater resolution than BMI Z-score.

Limitations include the lack of Tanner staging and sex hormone measurements that could elucidate mechanisms of the identified age- and sex-specific ceBMI diabetes risk thresholds. Our study was not designed to specifically address the effects of acute changes in BMI on disease onset, and the small number of diabetes events in some age and sex strata further hindered this ability. Finally, we investigated an at-risk cohort of autoantibody-positive relatives of patients with type 1 diabetes; although this cohort was heterogeneous, the results may not be broadly applicable to the general population.

Our results indicate that sustained elevation of BMI is associated with increased progression to type 1 diabetes in an at-risk pediatric population and that the BMI 85th percentile may not appropriately differentiate this risk for all pediatric subjects. Our data suggest that lifestyle modifications may delay disease onset in an at-risk population and suggest



**Figure 1**—Effect of ceBMI on type 1 diabetes risk comparing traditional overweight/obese ceBMI definitions to age- and sex-specific ceBMI diabetes risk thresholds. Proportion type 1 diabetes-free pediatric subjects of the PTP cohort according to age ( $\geq 12$  vs.  $< 12$  years old) and sex strata (males vs. females). A, C, E, and G: Assessment of overweight/obese threshold based on the 85th percentile for age- and sex-adjusted BMI. Dotted lines indicate ceBMI  $\geq 0$  (overweight/obese); solid gray indicates ceBMI  $< 0$  (nonoverweight/obese). B, D, F, and H: Assessment of ceBMI diabetes risk thresholds identified by recursive partitioning. Dotted lines indicate greater than or equal to age- and sex-specific ceBMI diabetes risk threshold; solid gray indicates less than age- and sex-specific ceBMI diabetes risk threshold. All models adjusted for antibody number (single vs. multiple).

age- and sex-specific ceBMI thresholds to implement such changes.

**Funding.** The sponsor of the trial was the Type 1 Diabetes TrialNet PTP Study Group. The Type 1 Diabetes TrialNet PTP Study Group is a clinical trials network funded by the National Institutes of Health through the National Institute of Diabetes and Digestive and Kidney Diseases, the National Institute of Allergy and Infectious Diseases, and the *Eunice Kennedy Shriver* National Institute of Child Health and Human Development, through the cooperative agreements U01-DK-061010, U01-DK-061034, U01-DK-061042, U01-DK-061058, U01-DK-085465, U01-DK-085453, U01-DK-085461, U01-DK-085463, U01-DK-085466, U01-DK-085499, U01-DK-085504, U01-DK-085505, U01-DK-085509, U01-DK-103180, U01-DK-103153, U01-DK-085476, and U01-DK-103266 and JDRF. This work was also partially supported by National Institutes of Health grants K12-DK-094726 (to C.T.F.) and U01-DK-103180-01 (to M.J.R.).

The contents of this article are solely the responsibility of the authors and do not necessarily represent the official views of the National Institutes of Health or JDRF.

**Duality of Interest.** No potential conflicts of interest relevant to this article were reported.

**Author Contributions.** C.T.F. designed the analysis and study design, researched data, and wrote the manuscript. S.M.G. analyzed the data, contributed statistical support, and contributed to the writing of the manuscript. Y.-F.L., C.E.-M., I.M.L., R.B., D.J.B., H.R., A.M., and S.E.G. reviewed and edited the manuscript and contrib-

uted to the discussion. M.J.R. contributed to the data analysis design and interpretation of results and critically revised the manuscript. All authors are members of the Type 1 Diabetes TrialNet Study Group. M.J.R. is the guarantor of this work and, as such, had full access to all the data in the study and takes responsibility for the integrity of the data and the accuracy of the data analysis.

**Prior Presentation.** Parts of this study were presented in abstract form at the 76th Scientific Sessions of the American Diabetes Association, New Orleans, LA, 10–14 June 2016.

## References

1. Wilkin TJ. The accelerator hypothesis: weight gain as the missing link between type I and type II diabetes. *Diabetologia* 2001;44:914–922
2. Elding Larsson H, Vehik K, Haller MJ, et al.; TEDDY Study Group. Growth and risk for islet autoimmunity and progression to type 1 diabetes in early childhood: the Environmental Determinants of Diabetes in the Young Study. *Diabetes* 2016;65:1988–1995
3. Meah FA, DiMeglio LA, Greenbaum CJ, et al.; Type 1 Diabetes TrialNet Study Group. The relationship between BMI and insulin resistance and progression from single to multiple autoantibody positivity and type 1 diabetes among TrialNet Pathway to Prevention participants. *Diabetologia* 2016;59:1186–1195
4. Kuchlbauer V, Vogel M, Gausche R, et al. High birth weights but not excessive weight gain prior to manifestation are related to earlier onset of diabetes in childhood: ‘accelerator hypothesis’ revisited. *Pediatr Diabetes* 2014;15:428–435
5. Sosenko JM, Krischer JP, Palmer JP, et al.; Diabetes Prevention Trial–Type 1 Study Group. A risk score for type 1 diabetes derived from

autoantibody-positive participants in the Diabetes Prevention Trial–Type 1. *Diabetes Care* 2008;31:528–533

6. Greenbaum CJ, Mandrup-Poulsen T, McGee PF, et al.; Type 1 Diabetes Trial Net Research Group; European C-Peptide Trial Study Group. Mixed-meal tolerance test versus glucagon stimulation test for the assessment of beta-cell function in therapeutic trials in type 1 diabetes. *Diabetes Care* 2008;31:1966–1971

7. Sosenko JM, Mahon J, Raffkin L, et al.; Diabetes Prevention Trial–Type 1 and TrialNet Study Groups. A comparison of the baseline metabolic profiles between Diabetes Prevention Trial–Type 1 and TrialNet Natural History Study participants. *Pediatr Diabetes* 2011;12:85–90

8. American Diabetes Association. Standards of medical care in diabetes—2014. *Diabetes Care* 2014;37(Suppl. 1):S14–S80

9. Skyler JS, Greenbaum CJ, Lachin JM, et al.; Type 1 Diabetes TrialNet Study Group. Type 1 Diabetes TrialNet—an international collaborative clinical trials network. *Ann N Y Acad Sci* 2008;1150:14–24

10. Lee JM, Gebremariam A, Vijan S, Gurney JG. Excess body mass index-years, a measure of degree and duration of excess weight, and risk for incident diabetes. *Arch Pediatr Adolesc Med* 2012;166:42–48

11. Bouchard DR, Porneala B, Janssen I, et al. Risk of type 2 diabetes and cumulative excess weight exposure in the Framingham Offspring Study. *J Diabetes Complications* 2013;27:214–218

12. Xu P, Krischer JP; Type 1 Diabetes TrialNet Study Group. Prognostic classification factors associated with development of multiple autoantibodies, dysglycemia, and type 1 diabetes—a recursive partitioning analysis. *Diabetes Care* 2016;39:1036–1044