

Initial single-centre Canadian experience with 18F-fluoromethylcholine positron emission tomography-computed tomography (18F-FCH PET/CT) for biochemical recurrence in prostate cancer patients initially treated with curative intent

Simon Gauvin, MD;^{*1} Yannick Cerantola, MD;^{*2,3} Eléonore Haberer;^{1,2} Vincent Pelsser, MD;¹ Stephan Probst, MD;^{1,4} Franck Bladou, MD;^{1,2} Maurice Anidjar, MD^{1,2}

*Co-first authors; ¹co-senior authors

¹Department of Radiology, Jewish General Hospital, McGill University Health Centre, Montreal, QC, Canada; ²Department of Urology, Jewish General Hospital, Montreal, QC, Canada; ³Department of Urology, University Hospital of Lausanne, Switzerland; ⁴Department of Nuclear Medicine, Jewish General Hospital, Montreal, QC, Canada

Cite as: *Can Urol Assoc J* 2017;11(1-2):47-52. <http://dx.doi.org/10.5489/cuaj.4068>

Abstract

Introduction: We sought to determine predictive factors (patient and prostate-specific antigen [PSA] characteristics) for 18F-fluoromethylcholine positron emission tomography-computed tomography (18F-FCH PET/CT) positivity in the context of biochemical recurrence after local treatment of prostate cancer (PCa) with curative intent.

Methods: This is a retrospective study including 60 18F-FCH PET/CT scans of patients with biochemical recurrence after initial radical prostatectomy (RP), external beam radiation therapy (EBRT), or focal high-intensity focused ultrasound (HIFU) with curative intent. The results were compared to findings on magnetic resonance imaging (MRI), computed tomography (CT), bone scan (BS), and histological analysis when available. Univariate analysis was performed to correlate results with patient characteristics.

Results: Thirty-eight (63.3%) scans were positive, 17 (28.3%) negative, and 5 (8.3%) equivocal. Of the positive scans, 16 demonstrated local recurrence, 12 regional/distant lymph nodes, five bone metastasis, and five local and distant recurrences. Among the 22 PET/CTs showing metastasis, conventional imaging was performed in 16 patients (72.7%). Of these, it demonstrated the lesion(s) found on PET/CT in eight patients (50.0%), was negative in seven (43.8%), and equivocal in one (6.3%). The trigger PSA ($p=0.04$), prostate-specific antigen velocity (PSAV) ($p=0.03$), and prostate-specific antigen doubling time (PSADT) ($p=0.046$) were significantly different when comparing positive and negative scans. Patients with positive scans were more likely to have received EBRT initially (odds ratio [OR] 11.0, 95% confidence interval [CI] 2.2–55.3). A trigger PSA of 2.6 ng/mL had a sensitivity of 84% and specificity of 65% for a positive scan. PET/CT changed the clinical management plan in 17 patients (28.3%).

Conclusions: 18F-FCH PET/CT demonstrates a high detection rate for local and distant recurrences after localized PCa treatment. A trigger PSA above 2.6 ng/mL seems optimal for appropriate patient selection.

Introduction

Prostate adenocarcinoma (PCa) is the most common cancer among Canadian men. The lifetime risk of developing prostate cancer is one in eight and the lifetime risk of dying from it is one in 27.¹ Treatment options for localized PCa include active surveillance in low-risk cancer, and radical prostatectomy (RP), external beam radiation therapy (EBRT), and in some instances, focal therapy —such as high-intensity focused ultrasound (HIFU) — in intermediate-risk disease.^{2–4} High-risk disease is treated by surgery or a combination of radiation therapy and androgen-deprivation therapy (ADT). Recurrence after treatment is not uncommon, occurring in approximately 20–30% of patients with RP and 20–50% of patients after EBRT.^{5–8}

Differentiating between local or metastatic recurrence is of primordial importance in selecting appropriate treatment. Local salvage treatment with curative intent can be offered in case of local recurrence. Systemic palliative treatment with hormonal therapy and/or chemotherapy remains the current standard for patients with metastatic disease. Therapy directed to oligometastases remains controversial, with a small number of studies showing some benefits.^{9–11}

Computed tomography (CT) and bone scintigraphy (BS) are widely used as part of initial workup of biochemical recurrence. However, these are limited by poor ability to detect disease at low prostate-specific antigen (PSA) levels.^{12–15} Novel functional imaging techniques have been developed and increasingly studied over the last decade, including 11C-choline and 18F-fluoromethylcholine (18F-FCH).¹⁶ Choline is an essential component of phospholipid membrane and demonstrates increased metabolism in PCa.¹⁷ The limited short half-life of 11C-choline (20.3 minutes)

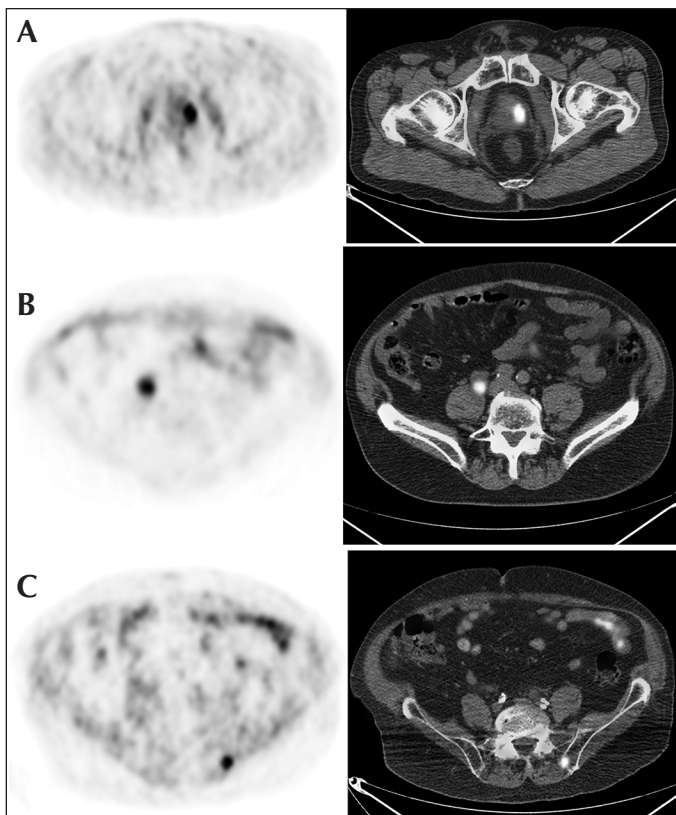


Fig. 1. Examples of positive 18F-fluoromethylcholine positron emission tomography-computed tomography (18F-FCH PET/CT) scans. **(A)** Axial 18F-FCH PET/CT images obtained from a patient with biochemical recurrence initially treated with external beam radiation therapy (EBRT). Focal uptake in the left prostate is demonstrated (SUV 7.2). The patient subsequently underwent salvage brachytherapy with response in prostate-specific antigen; **(B)** axial PET/CT images from a different patient with biochemical recurrence after initial radical prostatectomy demonstrating an enlarged right common iliac lymph node with high uptake (SUV 12.2), consistent with recurrence. Followup imaging later showed complete resolution of lymphadenopathy after the patient received hormone therapy; **(C)** axial PET/CT images from another patient with initial EBRT demonstrating increased uptake in the left posterior iliac bone (SUV 8.3), consistent with a bone metastasis.

prompted research into synthesis of 18F-FCH with a longer half-life (109.7 minutes). Although conflicting results have been reported in the course of initial staging of PCa, 18F-FCH positron emission tomography-computed tomography (PET/CT) has shown promising results for detection of metastasis in the context of biochemical recurrence.^{16,18-22} Recent reports suggest that this functional imaging technique might directly impact the management of these patients.²³⁻²⁵

The primary objective of this study was to determine predictive factors (patient and PSA characteristics) for 18F-FCH PET/CT positivity in patients with biochemical failure after local treatment for PCa with curative intent. Secondary objectives were to evaluate the impact of PET/CT on patient management and to compare its value to standard imaging techniques.

Methods

Patients and study design

This study was approved by the hospital research ethics committee (study #13-047) and written informed consent was obtained from all patients. We conducted a single-centre, retrospective analysis including 60 18F-FCH PET/CT scans (59 patients) performed from March 2014–January 2016. Inclusion criteria consisted of: histologically proven PCa, initial treatment with curative intent (RP, EBRT, or HIFU), and biochemical recurrence as defined by the guidelines of the European Association of Urology.²⁶ Patients with distant nodal or bone metastases or with non-diagnostic scans were excluded. Patient characteristics are presented in Tables 1 and 2.

Technique and study interpretation

PET/CT preparation consisted of four-hour fasting. Approximately 4 MBq/kg IV of 18F-fluoromethylcholine (18F-FCH) supplied by the Montreal Neurological Institute (Montreal, QC, Canada) were administered. Studies were performed using a hybrid PET/CT scanner (Discovery ST, General Electric Medical Systems, Waukesha, WI, U.S.). Images were acquired 10–30 minutes post-injection from skull base to thighs (6–7 beds, 3–4 minutes/bed). A nuclear medicine specialist then classified the results as positive, negative, or equivocal; a positive examination was defined as 18F-FCH uptake higher than background activity and not explained by physiological process. Examples of positive 18F-FCH PET/CT findings are provided in Fig. 1.

Validation of results

PET/CT findings were compared to magnetic resonance imaging (MRI), CT, BS, and histological analysis when available. Validation criteria included: 1) positive histological analysis; 2) response to treatment, defined by decreased PSA after treatment and/or response on followup imaging; 3) progression on followup PET/CT; and 4) positive conventional imaging. All negative PET/CTs were considered false negatives, as they failed to detect the cause of biochemical recurrence.

Impact on clinical management

A summary of clinical information was provided to two urooncologists, who were not the main treating physicians and were blinded to identifying information, PET/CT results, and information available afterwards. They were then asked to independently determine the theoretical management had

Table 1. Patient characteristics

Characteristics	Value
Age, years	
Mean (SD)	67.9 (9.3)
Median	67.9
Range	43.0–88.5
T stage, n (%) (NA=5)	
T1	11 (18.3)
T2	29 (48.3)
T3	15 (25)
N stage, n (%) (NA=3)	
Nx	16 (26.7)
N0	35 (58.3)
N1	6 (10.0)
Gleason score, n (%) (NA=3)	
6	6 (10.0)
7	31 (51.7)
≥8	20 (33.3)
Initial treatment, n (%)	
RP	33 (55.0)
EBRT	26 (43.3)
Focal HIFU	1 (1.7)
Other treatments, n (%) (NA=1)	
Yes	21 (35.0)
No	38 (63.3)
Margin status in patients post-RP, n (%) (NA=3)	
Positive	13 (39.4)
Negative	17 (51.5)
Time from end of initial treatment to PET/CT, years (NA=1)	
Mean (SD)	5.5 (3.4)
Median	5.6
Range	0.1–14.3
ADT at time of the PET/CT, n (%) (NA=2)	
Yes	8 (13.3)
No	50 (83.3)

ADT: androgen-deprivation therapy; EBRT: external beam radiation therapy; HIFU: high-intensity focused ultrasound; NA: not available; PET/CT: positron emission tomography-computed tomography; RP: radical prostatectomy; SD: standard deviation.

Table 2. Patient PSA characteristics

Characteristics	Value
PSA at diagnosis, ng/mL (NA=5)	
Mean (SD)	13.6 (12.3)
Median	9
Range	4.0–59.3
PSA nadir, ng/mL (NA=3)	
Mean (SD)	1.1 (2.0)
Median	0.2
Range	0.0–9.5
Trigger PSA, ng/mL (NA=1)	
Mean (SD)	8.0 (11.7)
Median	3.9
Range	0.2–56.6
PSADT, months (NA=5)	
Mean (SD)	9.9 (9.4)
Median	6.2
Range	1.2–36.0
PSAV, ng/mL/year (NA=5)	
Mean (SD)	7.6 (14.3)
Median	2.2
Range	0.1–79.0

NA: not available; PSA: prostate-specific antigen; PSADT: prostate-specific antigen doubling time; PSAV: prostate-specific antigen velocity; SD: standard deviation.

Results

PET/CT results and sites of recurrence

Sixty examinations were performed at a median PSA of 3.9 ng/mL. Of these, 38 (63.3%) PET/CT scans were positive, 17 (28.3%) negative, and five (8.3%) equivocal/indeterminate. Of the 38 positive scans, 16 demonstrated local recurrence (14 in patients with initial EBRT, one RP, and one HIFU), 12 regional and/or distant lymph nodes (10 RP, two EBRT), five bone metastasis, and five local and distant recurrences.

Lesion-based validation of PET/CT results

Fifteen (71.4%) of the positive scans for local recurrence (n=21) were validated according to histological analysis in 10 patients (66.7%), response to treatment as defined by a decrease in PSA in two patients (13.3%), and correlation with conventional imaging in three patients (20.0%). One scan was a biopsy-proven false positive.

Eighteen (81.8%) of the positive scans for metastasis (n=22) were validated according to a response to treatment on following imaging studies in eight patients (44.4%), a response to treatment (decreased PSA) in five patients (27.8%), correlation with conventional imaging in four patients (22.2%), and progression on followup PET/CT in one patient (5.6%). One scan was considered false positive after comparison with conventional imaging.

the PET/CT not been performed. Finally, the theoretical and actual therapeutic strategies were compared.

Statistical analysis

All statistical analyses were performed using SAS (v.9.4) (SAS Institute Inc., Cary, NC, U.S.). For descriptive statistics, we computed t-test for continuous variables or performed one-way ANOVA. Results with p<0.05 were considered statistically significant. The Chi-square test for proportions and Fisher exact test were calculated when necessary. Finally, we modeled the probability of having a positive scan using PROC LOGISTIC.

Table 3. Qualitative factors analysis

Characteristics	Positive, n (%)	Negative, n (%)	p
T stage (NA=5)			
T1	8 (21.1)	2 (11.8)	0.748
T2	16 (42.1)	10 (58.8)	
T3	10 (26.3)	4 (23.5)	
N stage (NA=3)			
Nx	7 (18.4)	9 (52.9)	0.009
N0	27 (71.5)	4 (23.5)	
N1	2 (5.3)	3 (17.7)	
Gleason score (NA=3)			
6	6 (15.8)	0 (0.0)	0.069
7	16 (42.1)	13 (76.5)	
≥8	14 (36.8)	3 (17.6)	
Initial treatment			
RP	15 (39.5)	15 (88.2)	0.002
EBRT	22 (57.9)	2 (11.8)	
Focal HIFU	1 (2.6)	0 (0.0)	
Other treatments (NA=1)			
Yes	11 (29.0)	10 (58.9)	0.088
No	26 (68.4)	7 (41.2)	
ADT at time of the PET/CT (NA=2)			
Yes	7 (18.4)	0 (0.0)	0.137
No	30 (78.9)	16 (94.1)	
Margin status in patients post RP (NA=3)			
Positive	6 (40.0)	6 (40.0)	1.000
Negative	7 (46.7)	8 (53.3)	

ADT: androgen-deprivation therapy; EBRT: external beam radiation therapy; HIFU: high-intensity focused ultrasound; NA: not available; PET/CT: positron emission tomography-computed tomography; RP: radical prostatectomy.

One local, two nodal, and one bone recurrence were missed by PET/CT.

Comparison with conventional imaging modalities

Among the 21 PET/CTs showing local recurrence, prostate MRI was performed in 11 patients (52.4%). Of these, 10 were positive (90.9%) and 1 was equivocal (9.1%).

Table 4. Quantitative factors analysis

Characteristics	Positive, mean (SD)	Negative, mean (SD)	p
Age, years	69.6 (8.6)	64.6 (9.3)	0.061
Time from end of initial treatment to PET/CT, years	5.9 (3.1)	5.7 (3.9)	0.875
PSA at diagnosis, ng/mL	12.7 (11.3)	15.0 (7.6)	0.525
PSA nadir, ng/mL	1.2 (2.0)	0.9 (2.3)	0.559
Trigger PSA, ng/mL	10.9 (6.4)	3.5 (0.5)	0.035
PSADT, months	8.2 (7.6)	13.9 (12.0)	0.046
PSAV, ng/mL/year	11.1 (17.0)	1.9 (4.4)	0.032

PET/CT: positron emission tomography-computed tomography; PSA: prostate-specific antigen; PSADT: prostate-specific antigen doubling time; PSAV: prostate-specific antigen velocity; SD: standard deviation.

Table 5. Crude odds ratio of positive and negative PET/CT scans

Characteristics	Positive, n (%)	Negative, n (%)	Crude odds ratio	95% CI
Number of PET/CT scans	38	17		
Initial treatment RP	15 (39.5)	15 (88.2)	1.0	Ref.
Initial treatment EBRT	22 (57.9)	2 (11.8)	11.0	2.2–55.3
Trigger PSA <2 ng/mL	3 (7.9)	9 (52.9)	1.0	Ref.
Trigger PSA ≥2 ng/mL	34 (89.5)	8 (47.1)	12.8	2.8–58.1
PSAV <1 ng/mL/year	4 (10.5)	11 (64.7)	1.0	Ref.
PSAV ≥1 but <5 ng/mL/year	14 (36.8)	5 (29.4)	7.7	1.7–35.7
PSAV ≥5 ng/mL/year	16 (42.1)	1 (5.9)	44.0	4.3–448.3

PET/CT: positron emission tomography-computed tomography; CI: confidence interval; EBRT: external beam radiation therapy; PSA: prostate-specific antigen; PSADT: prostate-specific antigen doubling time; PSAV: prostate-specific antigen velocity; RP: radical prostatectomy; Ref.: reference; SD: standard deviation.

Among the 22 PET/CT scans showing metastatic disease, conventional imaging was performed in 16 patients (72.7%). Of these, conventional imaging demonstrated the lesion(s) found on PET/CT in eight patients (50.0%), was negative in seven (43.8%), and equivocal in one (6.3%).

Correlation between patient characteristics and PET/CT results

More patients with a positive scan were initially treated with EBRT ($p=0.002$). Moreover, there was a significant difference between trigger PSA, prostate-specific antigen velocity (PSAV), and prostate-specific antigen doubling time (PSADT) when comparing positive and negative PET/CTs (Tables 3, 4, and 5).

Thirty-four patients (89.5%) with a positive PET/CT ($n=38$) had a trigger PSA ≥2 ng/mL, three (7.9%) 1–2 ng/mL, and none (0%) <1 ng/mL. PET/CT was positive in 77%, 60%, and 0% for patients with a trigger PSA ≥2 ng/mL, 1–2 ng/mL, and <1 ng/mL, respectively.

There was no statistically significant relationship between maximum standardized uptake values (SUVmax) and Gleason scores ($p=0.27$) or trigger PSA ($p=0.14$).

A trigger PSA of 2.6 ng/mL and PSADT of 4.4 months had a sensitivity of 84% and 76% and specificity of 65% and 50%, respectively for a positive scan (Fig. 2).

Impact on clinical management

The theoretical and actual management plans differed in 17 cases (28.3%), 11 of which with positive PET/CT. The treatment plan changed from watchful waiting to treatment in seven cases and from treatment to watchful waiting in four cases. In six cases, the therapeutic strategy was modified; two of these involved converting palliative to a curative intent salvage treatment.

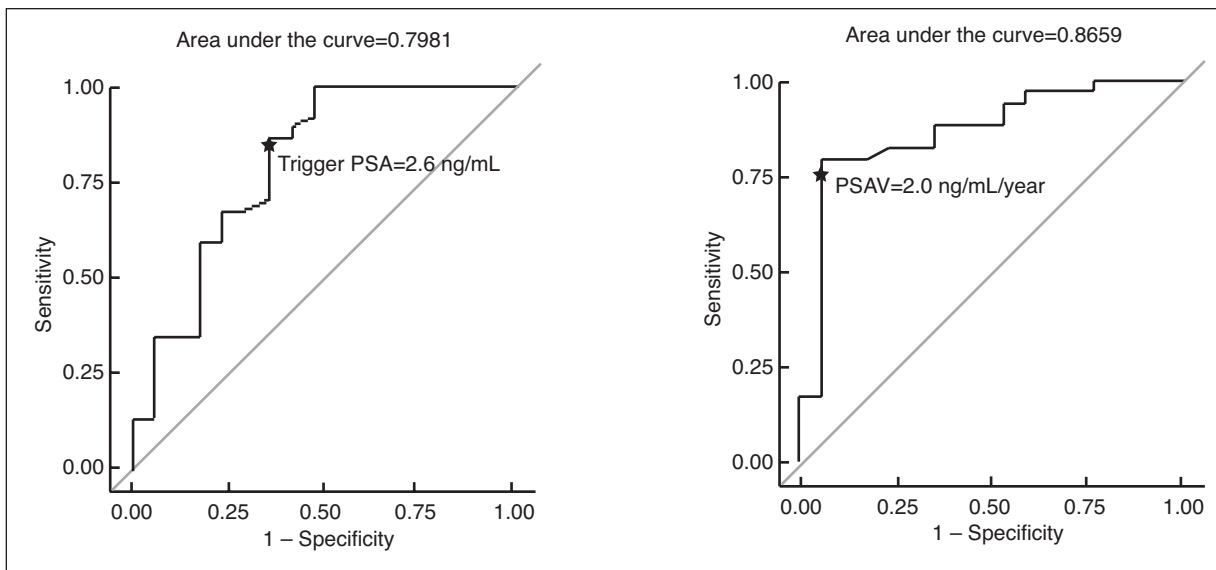


Fig. 2. Trigger prostate-specific antigen (PSA) and PSA velocity (PSAV) receiver operating characteristic (ROC) curves.

Discussion

In this study, we report our initial local experience with 18F-FCH PET/CT in the context of PCa biochemical recurrence after treatment with curative intent.

Reported detection rates for 18F-FCH PET/CT vary from 38–98%. This is probably related to heterogeneous study groups. Our study shows a detection rate of 63.3% for recurrence after localized treatment of PCa, similar to previous studies.^{27,28} A large number of the positive PET/CTs were validated using pre-established criteria.

PSA parameters were significantly different when comparing positive and negative PET/CT results, which confirms the known relationship with PSA kinetics.^{27,29-31} We found the best threshold values to predict PET/CT positivity to be a trigger PSA of 2.6 ng/mL, PSAV of 2.0 ng/mL/year, and PSADT of 4.4 months. In comparison, Rodado-Marina et al reported a trigger PSA of 3.5 ng/mL (sensitivity 64%, specificity 76%) and PSADT of six months (sensitivity 58%, specificity 58%) while Cimitan et al reported a sensitivity of 79.5% and specificity of 67% for a trigger PSA of 2 ng/mL.^{27,30}

Initial Gleason score was not significantly different between patients with positive and negative PET/CT ($p=0.069$). This could possibly be related to our small sample size. In a larger study, Cimitan et al demonstrated that a Gleason score ≥ 7 was an independent predictive factor for positive PET/CT, even with a low trigger PSA.³⁰

We did not find ADT administration at the time of the scan to negatively affect the detection rate, which is consistent with Chondrogiannis et al.³¹

In our study, PET/CT did not add significant value to the MRI diagnosis in context of local recurrence. In fact, pelvic MRI remains the modality of choice, with a sensitivity as

high as 91% in the context of biochemical recurrence after RP.^{32,33} Interestingly, 18F-FCH PET/CT detected extraprostatic disease not identified by conventional imaging in seven patients (43.8%).

More specific markers have been developed to increase detection rates of biochemical recurrence. In a study including 125 patients, Bluemel et al found that ⁶⁸Ga-PSMA PET/CT detected location of recurrences in 43.8% of choline-negative patients.³⁴ In a study including 319 patients, Afshar-Oromieh et al determined that ⁶⁸Ga-PSMA PET/CT was positive in 92.3%, 71.8%, and 52.9% of cases when PSA >2 ng/mL, 1–2 ng/mL, and ≤ 1 ng/mL, respectively.³⁵ Therefore, when compared to our results, ⁶⁸Ga-PSMA PET/CT has a higher detection rate and is positive at lower PSA values than 18F-FCH PET/CT.

We found that PET/CT had an impact on clinical management in 17 patients (28.3%), in the context of biochemical recurrence. This is lower than in other studies, which showed a change of treatment plan in 48–55% of patients.^{23,24} These studies used retrospective questionnaires completed by treating physicians and were not blinded, in contrast to our study. This could possibly explain the difference between results.

Our study remains limited by its retrospective design and relatively small sample size. Nevertheless, to the best of our knowledge, our study cohort represents the largest Canadian PCa patient group studied so far.

Conclusion

In conclusion, 18F-FCH PET/CT demonstrates a high detection rate for local, as well as distant recurrences after localized PCa treatment with curative intent. A trigger PSA above 2.6 ng/mL seems optimal for appropriate patient selection.

Further studies are needed to better understand the role of 18F-FCH PET/CT in the management of PCa patients.

Competing interests: Dr. Probst has been an advisor for Bayer and has participated in a clinical trial for Progenics. The remaining authors report no competing personal or financial interests.

This paper has been peer-reviewed.

References

1. Cancer.ca. Canadian Cancer Society's Advisory Committee on Cancer Statistics; 2015 [updated 2015; cited 2016 February 17]. <http://www.cancer.ca/>. Accessed February 17, 2016.
2. Heidenreich A, Bastian PJ, Bellmunt J, et al. EAU guidelines on prostate cancer. Part 1: screening, diagnosis, and local treatment with curative intent-update 2013. *Eur Urol* 2014;65:124-37. <https://doi.org/10.1016/j.eururo.2013.09.046>
3. Shah TT, Kasivisvanathan V, Jameson C, et al. Histological outcomes after focal high-intensity focused ultrasound and cryotherapy. *World J Urol* 2015;33:955-64. <https://doi.org/10.1007/s00345-015-1561-0>
4. Valerio M, Ahmed HU, Emberton M, et al. The role of focal therapy in the management of localised prostate cancer: A systematic review. *Eur Urol* 2014;66:732-51. <https://doi.org/10.1016/j.eururo.2013.05.048>
5. Han M, Partin AW, Pound CR, et al. Long-term biochemical disease-free and cancer-specific survival following anatomic radical retropubic prostatectomy. The 15-year Johns Hopkins experience. *Urol Clin North Am* 2001;28:555-65. [https://doi.org/10.1016/S0094-0143\(05\)70163-4](https://doi.org/10.1016/S0094-0143(05)70163-4)
6. Stephenson AJ, Scardino PT, Eastham JA, et al. Preoperative nomogram predicting the 10-year probability of prostate cancer recurrence after radical prostatectomy. *J Natl Cancer Inst* 2006;98:715-7. <https://doi.org/10.1093/jnci/dj1190>
7. Ward JF, Blute ML, Slezak J, et al. The long-term clinical impact of biochemical recurrence of prostate cancer 5 or more years after radical prostatectomy. *J Urol* 2003;170:1872-6. <https://doi.org/10.1097/01.ju.000091876.13656.2e>
8. Chism DB, Hanlon AL, Horwitz EM, et al. A comparison of the single and double factor high-risk models for risk assignment of prostate cancer treated with 3D conformal radiotherapy. *Int J Radiat Oncol Biol Phys* 2004;59:380-5. <https://doi.org/10.1016/j.ijrobp.2003.10.059>
9. Ost P, Jerezek-Fossa BA, As NV, et al. Progression-free survival following stereotactic body radiotherapy for oligometastatic prostate cancer treatment-naïve recurrence: A multi-institutional analysis. *Eur Urol* 2016;69:9-12. <https://doi.org/10.1016/j.eururo.2015.07.004>
10. Ost P, Bossi A, Decaestecker K, et al. Metastasis-directed therapy of regional and distant recurrences after curative treatment of prostate cancer: A systematic review of the literature. *Eur Urol* 2015;67:852-63. <https://doi.org/10.1016/j.eururo.2014.09.004>
11. Pasqualetti F, Panichi M, Sainato A, et al. [18F]Choline PET/CT and stereotactic body radiotherapy on treatment decision making of oligometastatic prostate cancer patients: Preliminary results. *Radiat Oncol* 2016;11:9. <https://doi.org/10.1186/s13014-016-0586-x>
12. Kane CJ, Amling CL, Johnstone PA, et al. Limited value of bone scintigraphy and computed tomography in assessing biochemical failure after radical prostatectomy. *Urology* 2003;61:607-11. [https://doi.org/10.1016/S0090-4295\(02\)02411-1](https://doi.org/10.1016/S0090-4295(02)02411-1)
13. Gomez P, Manoharan M, Kim SS, et al. Radionuclide bone scintigraphy in patients with biochemical recurrence after radical prostatectomy: When is it indicated? *BJU Int* 2004;94:299-302. <https://doi.org/10.1111/j.1464-410X.2004.04927.x>
14. Beresford MJ, Gillatt D, Benson RJ, et al. A systematic review of the role of imaging before salvage radiotherapy for post-prostatectomy biochemical recurrence. *Clin Oncol (R Coll Radiol)* 2010;22:46-55. <https://doi.org/10.1016/j.clon.2009.10.015>
15. Rouviere O, Vitry T, Lyonnet D. Imaging of prostate cancer local recurrences: Why and how? *Eur Radiol* 2010;20:1254-66. <https://doi.org/10.1007/s00330-009-1647-4>
16. Vali R, Loidl W, Pirich C, et al. Imaging of prostate cancer with PET/CT using 18F-fluorocholine. *Am J Nucl Med Mol Imaging* 2015;5:96-108.
17. Ramirez de Molina A, Rodriguez-Gonzalez A, Gutierrez R, et al. Overexpression of choline kinase is a frequent feature in human tumour-derived cell lines and in lung, prostate, and colorectal human cancers. *Biochem Biophys Res Commun* 2002;296:580-3. [https://doi.org/10.1016/S0006-291X\(02\)00920-8](https://doi.org/10.1016/S0006-291X(02)00920-8)
18. Umbuhr MH, Muntener M, Hany T, et al. The role of 11C-choline and 18F-fluorocholine positron emission tomography (PET) and PET/CT in prostate cancer: A systematic review and meta-analysis. *Eur Urol* 2013;64:106-17. <https://doi.org/10.1016/j.eururo.2013.04.019>
19. Leiblich A, Stevens D, Sooriakumaran P. The utility of molecular imaging in prostate cancer. *Curr Urol Rep* 2016;17:26. <https://doi.org/10.1007/s11934-015-0573-z>
20. Beheshti M, Imamovic L, Broinger G, et al. 18F choline PET/CT in the preoperative staging of prostate cancer in patients with intermediate or high risk of extracapsular disease: A prospective study of 130 patients. *Radiology* 2010;254:925-33. <https://doi.org/10.1148/radiol.09090413>
21. Kjalhede H, Ahlgren G, Almquist H, et al. 18F-choline PET/CT for early detection of metastases in biochemical recurrence following radical prostatectomy. *World J Urol* 2015;33:1749-52. <https://doi.org/10.1007/s00345-015-1547-y>
22. Evangelista L, Cimitan M, Zannoni F, et al. Comparison between conventional imaging (abdominal-pelvic computed tomography and bone scan) and [18F]choline positron emission tomography/computed tomography imaging for the initial staging of patients with intermediate- to high-risk prostate cancer: A retrospective analysis. *Scand J Urol* 2015;49:345-53. <https://doi.org/10.3109/21681805.2015.1005665>
23. Soyka JD, Muster MA, Schmid DT, et al. Clinical impact of 18F-choline PET/CT in patients with recurrent prostate cancer. *Eur J Nucl Med Mol Imaging* 2012;39:936-43. <https://doi.org/10.1007/s00259-012-2083-2>
24. Goldstein J, Even-Sapir E, Ben-Haim S, et al. Does choline PET/CT change the management of prostate cancer patients with biochemical failure? *Am J Clin Oncol* 2014. [Epub ahead of print]. <https://doi.org/10.1097/COC.0000000000000139>
25. D'Angelillo RM, Sciuto R, Ramella S, et al. 18F-choline positron emission tomography/computed tomography-driven high-dose salvage radiation therapy in patients with biochemical progression after radical prostatectomy: Feasibility study in 60 patients. *Int J Radiat Oncol Biol Phys* 2014;90:296-302. <https://doi.org/10.1016/j.ijrobp.2014.05.050>
26. Heidenreich A, Bastian PJ, Bellmunt J, et al. EAU guidelines on prostate cancer. Part 2: Treatment of advanced, relapsing, and castration-resistant prostate cancer. *Eur Urol* 2014;65:467-79. <https://doi.org/10.1016/j.eururo.2013.11.002>
27. Rodado-Marina S, Coronado-Poggio M, Garcia-Vicente AM, et al. Clinical utility of 18F-fluorocholine positron-emission tomography/computed tomography (PET/CT) in biochemical relapse of prostate cancer after radical treatment: Results of a multicentre study. *BJU Int* 2015;115:874-83. <https://doi.org/10.1111/bju.12953>
28. Cimitan M, Bortolus R, Morassut S, et al. [18F]fluorocholine PET/CT imaging for the detection of recurrent prostate cancer at PSA relapse: Experience in 100 consecutive patients. *Eur J Nucl Med Mol Imaging* 2006;33:1387-98. <https://doi.org/10.1007/s00259-006-0150-2>
29. Schillaci O, Calabria F, Tavolozza M, et al. Influence of PSA, PSA velocity, and PSA doubling time on contrast-enhanced 18F-choline PET/CT detection rate in patients with rising PSA after radical prostatectomy. *Eur J Nucl Med Mol Imaging* 2012;39:589-96. <https://doi.org/10.1007/s00259-011-2030-7>
30. Cimitan M, Evangelista L, Hodolic M, et al. Gleason score at diagnosis predicts the rate of detection of 18F-choline PET/CT performed when biochemical evidence indicates recurrence of prostate cancer: Experience with 1000 patients. *J Nucl Med* 2015;56:209-15. <https://doi.org/10.2967/jnumed.114.141887>
31. Chondrogiannis S, Marzola MC, Ferretti A, et al. Is the detection rate of 18F-choline PET/CT influenced by androgen-deprivation therapy? *Eur J Nucl Med Mol Imaging* 2014;41:1293-300. <https://doi.org/10.1007/s00259-014-2720-z>
32. Linder BJ, Kawashima A, Woodrum DA, et al. Early localization of recurrent prostate cancer after prostatectomy by endorectal coil magnetic resonance imaging. *Can J Urol* 2014;21:7283-9.
33. Kitajima K, Murphy RC, Nathan MA, et al. Detection of recurrent prostate cancer after radical prostatectomy: Comparison of 11C-choline PET/CT with pelvic multiparametric MR imaging with endorectal coil. *J Nucl Med* 2014;55:223-32. <https://doi.org/10.2967/jnumed.113.123018>
34. Bluemel C, Krebs M, Palat B, et al. 68Ga-PSMA-PET/CT in patients with biochemical prostate cancer recurrence and negative 18F-Choline-PET/CT. *Clin Nucl Med* 2016;41:515-21. <https://doi.org/10.1097/RLU.0000000000001197>
35. Afshar-Oromieh A, Avtzi E, Giesel FL, et al. The diagnostic value of PET/CT imaging with the 68Ga-labelled PSMA ligand HBED-CC in the diagnosis of recurrent prostate cancer. *Eur J Nucl Med Mol Imaging* 2015;42:197-209. <https://doi.org/10.1007/s00259-014-2949-6>

Correspondence: Dr. Simon Gauvin, Department of Radiology, Jewish General Hospital, McGill University Health Centre, Montreal, QC, Canada; simon.gauvin@mail.mcgill.ca