



## RESEARCH ARTICLE

**REVISED** **A genomic atlas of human adrenal and gonad development**  
[version 2; referees: 4 approved]

Ignacio del Valle<sup>1</sup>, Federica Buonocore<sup>1</sup>, Andrew J. Duncan<sup>1</sup>, Lin Lin<sup>1</sup>,  
Martino Barenco<sup>2</sup>, Rahul Parnaik<sup>1</sup>, Sonia Shah<sup>3,4</sup>, Mike Hubank<sup>5</sup>, Dianne Gerrelli<sup>2</sup>,  
John C. Achermann <sup>1</sup>

<sup>1</sup>Genetics and Genomic Medicine, UCL Great Ormond Street Institute of Child Health, London, UK<sup>2</sup>Developmental Biology and Cancer, UCL Great Ormond Street Institute of Child Health, London, UK<sup>3</sup>Institute for Molecular Bioscience, University of Queensland, Brisbane, Australia<sup>4</sup>Institute of Cardiovascular Science, University College London, London, UK<sup>5</sup>The Centre for Molecular Pathology, Royal Marsden Hospital, Sutton, UK

**v2** First published: 07 Apr 2017, 2:25 (doi: [10.12688/wellcomeopenres.11253.1](https://doi.org/10.12688/wellcomeopenres.11253.1))  
Latest published: 23 Oct 2017, 2:25 (doi: [10.12688/wellcomeopenres.11253.2](https://doi.org/10.12688/wellcomeopenres.11253.2))

**Abstract**

**Background:** In humans, the adrenal glands and gonads undergo distinct biological events between 6-10 weeks post conception (wpc), such as testis determination, the onset of steroidogenesis and primordial germ cell development. However, relatively little is currently known about the genetic mechanisms underlying these processes. We therefore aimed to generate a detailed genomic atlas of adrenal and gonad development across these critical stages of human embryonic and fetal development.

**Methods:** RNA was extracted from 53 tissue samples between 6-10 wpc (adrenal, testis, ovary and control). Affymetrix array analysis was performed and differential gene expression was analysed using Bioconductor. A mathematical model was constructed to investigate time-series changes across the dataset. Pathway analysis was performed using ClueGo and cellular localisation of novel factors confirmed using immunohistochemistry.

**Results:** Using this approach, we have identified novel components of adrenal development (e.g. *ASB4*, *NPR3*) and confirmed the role of *SRY* as the main human testis-determining gene. By mathematical modelling time-series data we have found new genes up-regulated with *SOX9* in the testis (e.g. *CITED1*), which may represent components of the testis development pathway. We have shown that testicular steroidogenesis has a distinct onset at around 8 wpc and identified potential novel components in adrenal and testicular steroidogenesis (e.g. *MGARP*, *FOXO4*, *MAP3K15*, *GRAMD1B*, *RMND2*), as well as testis biomarkers (e.g. *SCUBE1*). We have also shown that the developing human ovary expresses distinct subsets of genes (e.g. *OR10G9*, *OR4D5*), but enrichment for established biological pathways is limited.

**Conclusion:** This genomic atlas is revealing important novel aspects of human development and new candidate genes for adrenal and reproductive disorders.

**Open Peer Review**

Referee Status:

	Invited Referees			
	1	2	3	4
<b>version 2</b> published 23 Oct 2017		 report	 report	
<b>version 1</b> published 07 Apr 2017	 report	 report	 report	 report

- Olle Söder**, Karolinska Institutet, Sweden
- Andrew H. Sinclair** , Murdoch Children's Research Institute, Australia  
**Katie Ayers**, Murdoch Children's Research Institute, Australia
- Rodolfo A. Rey** , Hospital de Niños R. Gutiérrez, Argentina  
Universidad de Buenos Aires, Argentina  
**Romina P. Grinspon** , Hospital de Niños R. Gutiérrez, Argentina

4 **Jorma Toppari** , University of Turku, Finland  
**Juho-Antti Mäkelä** , University of Turku, Finland

---

**Discuss this article**

Comments (0)

**Corresponding author:** John C. Achermann ([j.achermann@ucl.ac.uk](mailto:j.achermann@ucl.ac.uk))

**Author roles:** **del Valle I:** Conceptualization, Data Curation, Formal Analysis, Investigation, Methodology, Validation, Visualization, Writing – Original Draft Preparation, Writing – Review & Editing; **Buonocore F:** Data Curation, Formal Analysis, Investigation, Resources, Validation, Visualization, Writing – Review & Editing; **Duncan AJ:** Data Curation, Formal Analysis, Investigation, Methodology, Validation, Visualization, Writing – Review & Editing; **Lin L:** Conceptualization, Investigation, Methodology, Validation, Writing – Review & Editing; **Barenco M:** Data Curation, Formal Analysis, Methodology, Software, Writing – Original Draft Preparation; **Parnaik R:** Investigation, Methodology, Validation, Visualization, Writing – Review & Editing; **Shah S:** Data Curation, Formal Analysis, Validation; **Hubank M:** Conceptualization, Methodology, Resources, Supervision, Writing – Review & Editing; **Gerrelli D:** Conceptualization, Formal Analysis, Funding Acquisition, Investigation, Methodology, Resources, Writing – Review & Editing; **Achermann JC:** Conceptualization, Data Curation, Funding Acquisition, Methodology, Project Administration, Supervision, Visualization, Writing – Original Draft Preparation, Writing – Review & Editing

**Competing interests:** No competing interests were disclosed.

**How to cite this article:** del Valle I, Buonocore F, Duncan AJ *et al.* **A genomic atlas of human adrenal and gonad development [version 2; referees: 4 approved]** Wellcome Open Research 2017, 2:25 (doi: [10.12688/wellcomeopenres.11253.2](https://doi.org/10.12688/wellcomeopenres.11253.2))

**Copyright:** © 2017 del Valle I *et al.* This is an open access article distributed under the terms of the [Creative Commons Attribution Licence](https://creativecommons.org/licenses/by/4.0/), which permits unrestricted use, distribution, and reproduction in any medium, provided the original work is properly cited.

**Grant information:** JCA is a Wellcome Trust Senior Research Fellow in Clinical Science [grant no. 098513/Z/12/Z], with support from the National Institute for Health Research Biomedical Research Centre at Great Ormond Street Hospital for Children NHS Foundation Trust, and University College London. The human embryonic and fetal material was provided by the Joint MRC/Wellcome Trust [grant no. 099175/Z/12/Z] Human Developmental Biology Resource ([www.hdbr.org](http://www.hdbr.org)).

*The funders had no role in study design, data collection and analysis, decision to publish, or preparation of the manuscript.*

**First published:** 07 Apr 2017, 2:25 (doi: [10.12688/wellcomeopenres.11253.1](https://doi.org/10.12688/wellcomeopenres.11253.1))

**REVISED Amendments from Version 1**

We have undertaken further qRTPCR validation of adrenal gene expression and include these data as a revised [Figure 5b](#). We also include higher power immunohistochemistry of FOXO4 and NR5A1 in the nuclei of fetal testis Leydig cells as a revised [Figure 12d](#). We include a dataset of differential gene expression in the testis versus ovary ([Dataset 7](#), OSF). We now include three Supplementary Figures of further validation data to show serial upregulation of novel genes in the testis with time (qRTPCR, [Supplementary Figure 1](#)); upregulation of novel steroidogenic components with time (qRTPCR and immunohistochemistry, [Supplementary Figure 2](#)); higher powered adrenal expression data for GRAMD1B and RMDN2 in the adrenal gland as well as additional negative control data (immunohistochemistry, [Supplementary Figure 3](#)). Finally, we have extended the discussion to include a paragraph outlining several limitations of the study and possible future approaches.

See referee reports

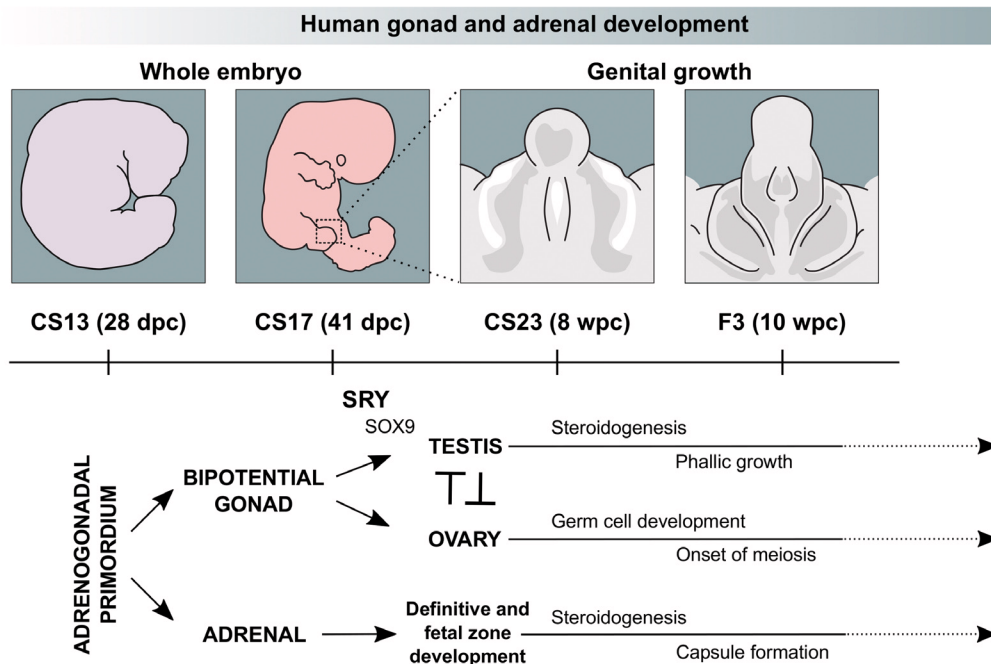
**Introduction**

The development of the adrenal gland and gonads (testes, ovaries) are two of the most important embryological events, but relatively little is known about the exact mechanisms of these processes in humans.

Development of these structures is closely linked as they arise from a shared region of intermediate mesoderm in early embryogenesis and subsequently have common biological processes, such as the ability to synthesise steroid hormones (see [Figure 1](#) for an overview).

The primordial adrenal gland arises as a distinct structure at around 28 days post-conception (dpc) and undergoes rapid growth during late embryonic and early fetal life ([Ishimoto & Jaffe, 2011](#)). The adrenal cortex develops into definitive and fetal zones that can produce steroid hormones (cortisol, aldosterone) and large amounts of adrenal androgens, such as dehydroepiandrosterone (DHEA) ([Miller & Auchus, 2011](#); [Xing \*et al.\*, 2015](#)). Chromaffin cells derived from the sympathetic nervous system migrate into the developing adrenal gland and later coalesce to form the adrenal medulla, which secretes adrenaline and noradrenaline ([Figure 1](#)). It has been proposed that the entire hypothalamic-pituitary-adrenal (HPA) axis is functionally intact during early fetal life ([Goto \*et al.\*, 2006](#)).

In contrast, the developing gonad remains “bipotential” until around 41 dpc as it can differentiate into either a testis or ovary ([Figure 1](#)) ([Bashamboo \*et al.\*, 2017](#); [Svingen & Koopman, 2013](#)).



**Figure 1. Current model of human gonad and adrenal development between Carnegie Stage 13 (CS13) and Fetal Stage 3 (F3).** The bipotential gonad and adrenal gland both arise from the adrenogonadal primordium around CS13. Sex determination in the bipotential gonad occurs between CS17 and CS23 when transient *SRY* expression promotes the upregulation of genes, including *SOX9*, in the developing testis. Sex differentiation starts with the onset of steroidogenesis around CS23, which results in development of the external genitalia and phallic growth (right panel). Ovary-specific genes are thought to suppress male pathway specification. The ovary also supports germ cell expansion and entry into meiosis. The fetal adrenal cortex develops into definitive and fetal zones, producing steroid hormones and adrenal androgens. Chromaffin cells derived from the sympathetic nervous system migrate into the developing adrenal gland, merging later to form the adrenal medulla.

In the developing 46,XY embryo, transient expression of the testis-determining gene, *SRY*, on the Y chromosome is believed to lead to upregulation of genes such as *SOX9* and the process of testis determination (Bashamboo *et al.*, 2017; Hanley *et al.*, 2000; Hiramatsu *et al.*, 2009; Koopman *et al.*, 2016; Sekido & Lovell-Badge, 2008). At around 7–8 weeks post conception (wpc), Sertoli cells secrete the peptide hormone Anti-Müllerian Hormone (AMH, also known as Müllerian Inhibiting Substance, MIS) to regress Müllerian structures (uterus and upper vagina). Fetal Leydig cells develop and synthesise testosterone. Testosterone stabilises Wolffian structures and stimulates development of the external genitalia through its peripheral conversion to dihydrotestosterone (Figure 1) (Miller & Auchus, 2011).

Ovary development in the 46,XX embryo was originally thought to be a “passive” process that occurs in the absence of *SRY* and other components of the testis-determining pathway. Although the morphological changes in the ovary are less striking, data from mice and from 46,XX individuals with rare forms of ovotestis development suggest that distinct pathways are up-regulated (e.g. *RSPO1/WNT4/β-catenin*), which may function largely to repress testis development (Figure 1) (Bashamboo *et al.*, 2017; Beverdam & Koopman, 2006; Bouma *et al.*, 2007; Jameson *et al.*, 2012; Nef *et al.*, 2005). The ovary also has expansion of primordial germ cells starting towards the end of this early fetal period (Fowler *et al.*, 2009).

Given the limited data currently available (Gerrard *et al.*, 2016; Houmarad *et al.*, 2009; O’Shaughnessy *et al.*, 2007; Ostrer *et al.*, 2007), we aimed to generate a genomic atlas of human adrenal and gonad development between 6 and 10 wpc. This period represents a critical window for organogenesis during which many key biological events occur in tissue specification and cellular differentiation. This unique dataset is supported by our current knowledge of key genetic components in these processes and by human conditions affecting adrenal and gonadal function. By comparing datasets at different times and in different tissues, as well as by mathematical modelling of time series data, several novel insights into human adrenal and gonad development are emerging.

## Methods

### Tissue samples

Human embryonic and fetal tissue samples used in this study were obtained in collaboration with the MRC/Wellcome Trust-funded Human Developmental Biology Resource (HDBR). The HDBR is a tissue bank regulated by the Human Tissue Authority. Samples were collected with appropriate maternal written consent and with approval from the NRES Committee London-Fulham (REC reference 08/H0712/34+5). Material was obtained only from surgical terminations of pregnancy to avoid any potentially interfering effects of anti-progestogens on nuclear receptor gene transcription.

All materials were kept on ice and processed rapidly after collection. The adrenal glands, gonads and any control tissues needed were identified and removed by blunt dissection under a dissecting microscope. Samples were immediately immersed

in RNAlater® (Ambion, Austin, TX, USA) and stored at -20 C. The age of the embryonic or fetal sample was calculated based on morphological characteristics using published guidelines (Hern, 1984; O’Rahilly & Müller, 1987) by a single experienced researcher (DG) (Supplementary Table 1). Each tissue sample was also karyotyped using standard G-banding, to determine the sex of the embryo/fetus and also to ensure there were no significant aneuploidies or chromosomal rearrangements present.

A total of 53 different organs between 42 days post conception (dpc) (Carnegie Stage 17) and 10 weeks post conception (wpc) (Fetal Stage 3) were included in the analysis. This dataset consisted of 17 adrenal glands, 20 testes and 10 ovaries, as well as 6 “control” samples (46, XY) from spine, brain, muscle, heart, kidney and liver. The adrenal gland and testis samples came from the same fetus in 11 cases across the age range. Control samples were obtained from 2 of these. An overview of all samples is provided in Supplementary Table 1.

### RNA extraction

RNA was extracted using the TRIzol method. In brief, the tissue sample was removed from RNAlater® and homogenized in 1ml TRIzol reagent using a Pellet Pestle micro-grinder (Kontes/Kimble Chase, USA). Chloroform (0.2 ml) was added to allow phase separation, and RNA was precipitated from aqueous phase by addition of 0.5 ml isopropyl alcohol. The RNA pellet was washed in 1ml ice-cold 75% ethanol and air dried before resuspension in nuclease-free water. The concentration and A260/A280 ratio was measured using a NanoDrop ND-1000 spectrophotometer (NanoDrop Technologies, Witec, Littau, Switzerland). RNA was stored at -80 C prior to use.

### Arrays

Expression assay was performed using the Affymetrix GeneChip Human Gene 1.0 ST array, covering approximately 36000 RefSeq transcripts. In brief, RNA concentration and quality was assessed using an Agilent Bioanalyzer. 250ng of total RNA was converted to ssDNA using the Ambion Whole Transcript Sense Target Labeling Assay and labelled and prepared for hybridisation using the Affymetrix Genechip WT Terminal Labelling and Hybridisation kits, as per the manufacturer’s protocol. Hybridisation was performed for 16 hours at 45 C. Arrays were washed and stained using the Affymetrix Fluidics Station 450 and scanned on the Affymetrix Genechip 3000S scanner as per the manufacturer’s instructions.

After passing quality control, CEL files were normalised using the Robust Multi-array Average (RMA) algorithm (oligo package in R, version 1.38.0). Adjustments for batch effects was performed using ComBat (sva package, version 3.22.0) (Leek *et al.*, 2012). One adrenal sample that was an extreme outlier in several QC platforms was excluded prior to further analysis (leaving the 17 adrenal samples reported above). Statistical analysis of the microarray data was carried out in R programming environment (version 3.3.3 running under Ubuntu 16.04.2) using Bioconductor packages ‘oligo’ (Carvalho & Irizarry, 2010) and ‘limma’ (version 3.30.12) (Smyth, 2004). The hierarchical cluster dendrogram was generated using the agglomeration method ward.D2.

Differentially expressed genes were obtained using linear models and the Benjamini and Hochberg method was applied to adjust the P-values for multiple testing (Benjamini & Hochberg, 1995). The cut-off values for adjusted P-values and  $\log_2$  fold-changes were 0.05 and 1 or 2, respectively. The heatmap (version 1.0.8) and VennDiagram packages (version 1.6.17) were used to generate the heatmaps and Venn diagrams, respectively. Pathway enrichment analysis was carried out using the Cytoscape plug-in ClueGO (version numbers 3.4.0 and 2.3.3, respectively) (Bindea *et al.*, 2009).

Array data are available from the [ArrayExpress database](#) under the accession number E-MTAB-5525.

### A model of expression changes over time

A phenomenological model (“BALT model”) was developed to pinpoint the time when gene expression levels change, as well as evaluating the speed and magnitude of this transition. The general form of the model is a sigmoid function relating the transcript concentration  $X$  (on a 2-log scale) to the time elapsed since conception ( $t$ , expressed in days):

$$X(t) = B + \frac{A}{1 + e^{f(T)(L-t)}}$$

In the formula above, B (“basis”) is the basic expression level at the start of the time course and A (“amplitude”) is the amplitude of the difference between the finishing expression level and the starting one. For down-regulated genes this latter parameter takes negative values. The parameter L (“localisation”) captures the inflexion point of the sigmoid, and hence can identify at which point in time a gene undergoes a change of expression level. Finally, T (“Transition”) is a measure of the speed of this transition and the sub-function  $f$  was chosen so that this parameter can also be expressed in days.

The model was fitted to the data for each gene using a least square objective function (maximum likelihood) with a gradient following algorithm (Levenberg-Marquardt). With this, the values for the aforementioned parameters that best fit the data were obtained as well as an evaluation of the goodness of fit (and thus, of the validity of the model). Furthermore, robustness of the parameters were estimated using a Markov Chain Monte Carlo procedure.

It was found that most of the differentially expressed genes in our biological system could be well described by this model or simplified versions of it. Hence the procedure was seen as a way to compress high dimensional data into a smaller set of easily interpretable indicators. This modelling framework allowed genes to be grouped according to their transition times between different expression levels in a developmental process as well as the manner of this transition. This model was used predominantly to investigate time course data in the testis. The two main groups of genes that were analysed were those that followed a curvilinear upregulation in expression from the start of the dataset similar to SOX9, as well as genes that showed a sigmoidal upregulation in expression with the onset of steroidogenesis. The mid-point (in dpc) of the

Carnegie or Fetal Stage was used when analysing data for the model ([Supplementary Table 1](#)).

### Quantitative RT-PCR

Purified RNA from adrenal glands or testis and control tissue (liver, brain, muscle) was quantified using the NanoDrop 1000 spectrophotometer (Thermo Fisher Scientific). First-strand cDNA was synthesised using SuperScript II Reverse Transcriptase (Invitrogen) and random primers according to the manufacturer’s instructions. Taqman® probes were obtained for the following genes of interest: *MAP3K15*, *ASB4*, *TDGF1*, *FOXO4*, *NRK*, *CITED1*, *ZNF280B*, *PRPS2*, *ANKRD18A*, *GRAMD1B* and *RMDN2* (Applied Biosystems, Warrington, UK). Amplification was performed in a total volume of 20  $\mu$ l per reaction using TaqMan® Gene Expression Master Mix on the StepOnePlus™ System (Thermo Fisher Scientific). Three biological replicates were used for each group. The relative quantification of gene expression was calculated as  $2^{-\Delta\Delta Ct}$  using the comparative Ct ( $\Delta\Delta Ct$ ) method and GAPDH as the housekeeping internal control. Data were analysed with StepOne software (v 2.1) and results expressed as fold change above control. Standard error of the mean is shown.

### Immunohistochemistry

Human adrenal glands and testes of the relevant ages of interest were obtained with approval from the HDBR. Tissues were sunk and positioned in Tissue-Tek® O.C.T. (Fisher Scientific, Loughborough, UK) and frozen on dry ice. Frozen sections were cut at 12  $\mu$ m thickness, collected on Superfrost slides (Fisher Scientific), dried and stored at -20 C. For immunohistochemistry, sections were fixed briefly in 4% PFA in TBS, rinsed in TBS and blocked for 1 hour in 1% BSA in TBS-Tween (0.5% Tween), before being incubated overnight with the following primary antibodies: NR5A1 (Invitrogen N1665/434200, 1:200), CYP11A1 (Sigma HPA016436, 1:20), NRK (Sigma HPA017238, 1:250), SOX9 (Sigma HPA001758, 1:200), CITED1 (Abcam ab15036, 1:200), GRAMD1B (Sigma HPA008557, 1:200; Abnova PAB15705, 1:200), RMDN2 (Sigma HPA034706, 1:200), FOXO4 (Cell Signalling 2499, 1:200), AMH (Abcam ab103233 1:200), INSL3 (Sigma HPA028615, 1:1000), SCUBE1 (Abcam ab105358, 1:50). The next morning, sections were washed in TBS-Tween and incubated for 1 hour with the relevant secondary antibodies: Alexa488 goat anti-mouse (Invitrogen A11001, 1:400) and Alexa555 goat anti-rabbit (Invitrogen A21429, 1:400). Nuclei were counterstained with DAPI (10  $\mu$ g/ml, Sigma). Slides were washed with TBS-Tween and mounted using ProLong Gold Antifade Mountant (Life Technologies). Images were collected on a Zeiss LSM 710 confocal microscope (Carl Zeiss) and analysed using Zeiss Zen 2009 and Image J (version 1.46r).

### Results

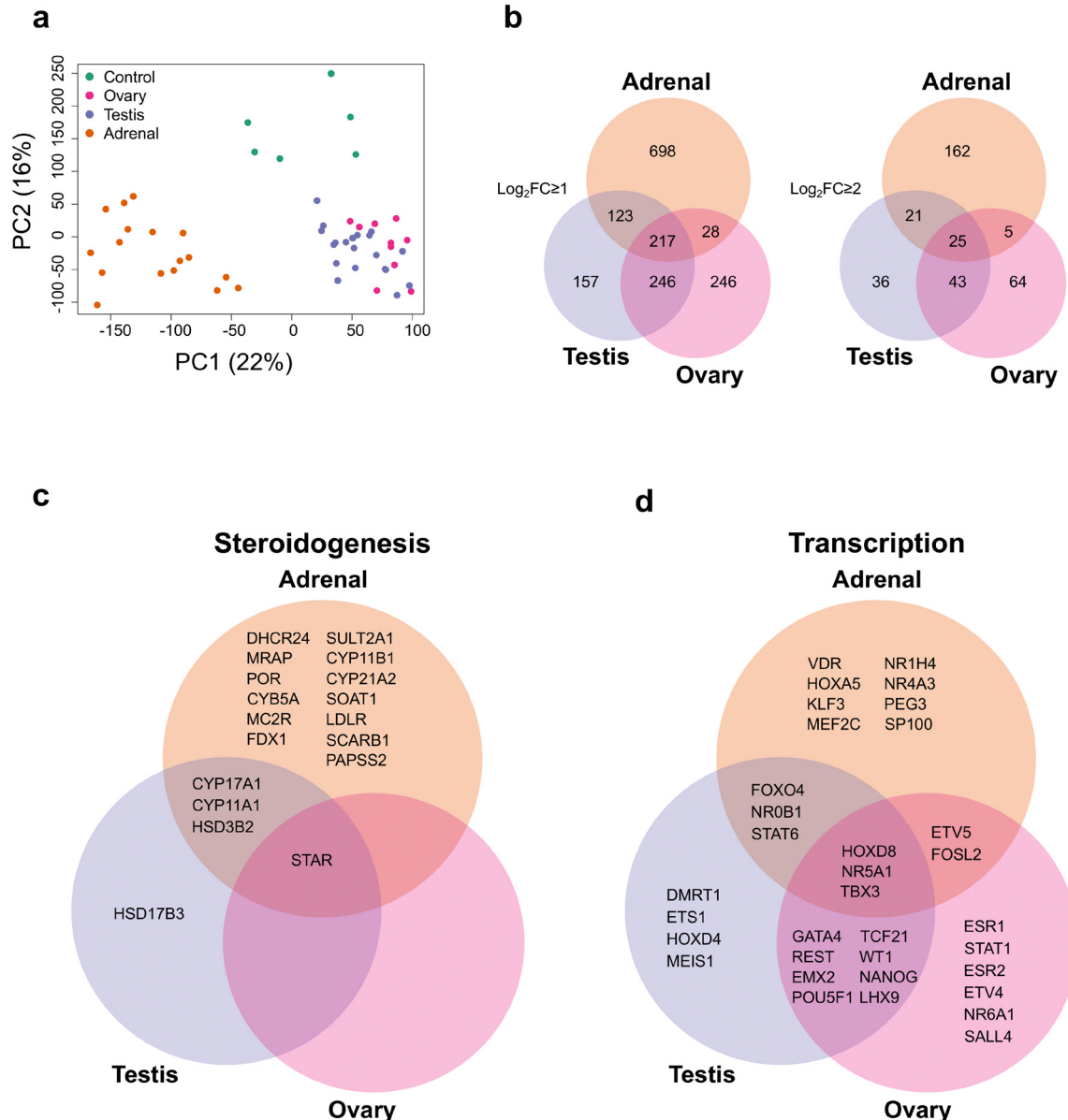
#### Generation of an atlas of gene expression in human adrenal gland, testis and ovary

Human embryonic and fetal tissues of interest were obtained following ethical approval and with informed consent from the Human Developmental Biology Resource (HDBR, [www.hdb.org](http://www.hdb.org)). RNA was extracted and gene expression profiling performed using Affymetrix ST1.0 Gene arrays. A total of 53 different

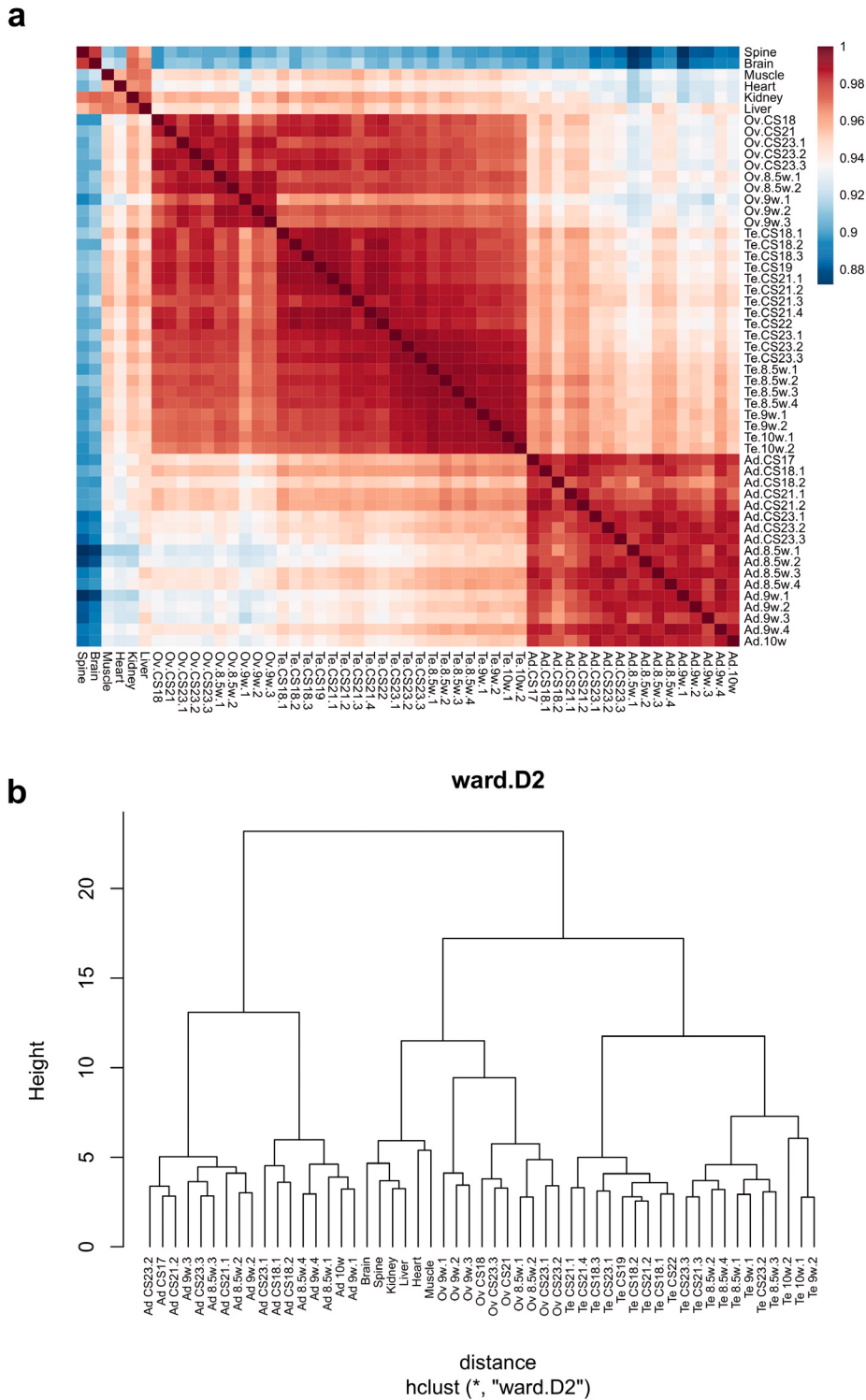
organs between 42 days (6 weeks) and 70 days (10 weeks) post-conception were included in the final analysis ([Supplementary Table 1](#)). This dataset consisted of 17 adrenal glands (46,XY), 10 ovaries (46,XX), and 20 testes (46,XY), as well as 6 control samples (46,XY) from spine, brain, muscle, heart, kidney and liver. Adrenal and control samples with a 46,XY karyotype were intentionally chosen so that subtle effects of Y-chromosome genes on testis determination and sex development could be analysed.

All relevant CEL files have been deposited in the [ArrayExpress database](#) (E-MTAB-5525) and the entire dataset of  $\log_2$  normalised values is included in [Dataset 1](#).

Initial comparisons of gene expression profiles in the different samples were undertaken using principal components analysis (PCA) and by generating correlation plots (heatmaps) and cluster dendrograms ([Figure 2a](#), [Figure 3](#)). Samples from each tissue



**Figure 2. Differential gene expression in adrenal gland, testis and ovary compared to controls.** (a) Principal component analysis of the 53 samples included in the study (17 adrenal, 20 testes, 10 ovary and 6 controls). The scatter plot shows the position of samples based on the two first principal components (PC1, PC2). (b) Venn diagram showing the overlap between differentially up-regulated genes in the adrenal, testis and ovary compared with control samples using either  $\log_2FC \geq 1$  or  $\log_2FC \geq 2$ . (c) Selected examples of differentially up-regulated genes ( $\log_2FC \geq 2$ ) involved in steroidogenesis (d) Selected transcription factors differentially expressed in each tissue ( $\log_2FC \geq 1$ ). For all comparisons,  $P$ -value  $\leq 0.05$ .



**Figure 3. Cluster analysis for all 53 samples included in the study. (a) Correlation plot (heatmap) of gene expression. (b) Hierarchical cluster dendrogram using the agglomeration method ward.D2.**

clearly clustered together, with more similarity between testis and ovary profiles than adrenal gland (Figure 2a, Figure 3).

### Global gene expression patterns reveal known disease-causing genes and identify novel tissue-specific factors

An analysis of global gene expression patterns was initially performed for the three tissues (adrenal, testis, ovary) compared to controls. Genes were identified that were up-regulated with a  $\log_2$  fold change (FC) of  $\geq 2$  or  $\geq 1$  and adjusted *P*-value lower than 0.05 ( $P \leq 0.05$ ) (Dataset 2–Dataset 4).

An overview of the number of differentially up-regulated genes that are specific to each tissue, or overlapping, is shown in Figure 2b. As expected, there was greater overlap between testis and adrenal (due to shared steroidogenic pathways) and testis and ovary (due to their gonadal origin and presence of germ cells) than between adrenal and ovary, which are developmentally and functionally more distinct.

Analysis of factors known to be involved in steroidogenesis showed that shared components of the steroidogenic pathways overlapped in the adrenal and testis datasets (e.g. *CYP11A1*, *HSD3B2*, *CYP17A1*), whereas the gene responsible for conversion of delta-4 steroids (e.g. androstenedione) into testosterone, *HSD17B3*, was the only testis-specific steroidogenic enzyme (Figure 2c). Adrenal-specific steroidogenic components included the enzymes needed to make aldosterone and cortisol from precursors (e.g. *CYP11B1*, *CYP21A2*) as well as adrenal-specific receptors involved in signalling pathways (e.g. *MC2R* [also known as the ACTH receptor], *MRAP*).

An analysis of known transcription factors (Figure 2d) revealed several key genes shared between the testis and ovary involved in gonad development (e.g., *WT1*, *EMX2*, *LHX9*, *GATA4*) or in germ cell maturation (e.g., *POU5F1* [also known as *OCT4*] and *NANOG*) (Figure 2d). One key transcription factor shared between the adrenal and testis was the nuclear receptor *NR0B1* (also known as DAX-1), responsible for X-linked adrenal hypoplasia congenita with male infertility (Suntharalingham *et al.*, 2015). Another key nuclear receptor common to all three tissues was *NR5A1* (also known as steroidogenic factor-1), responsible for adrenal insufficiency, testicular dysgenesis and primary ovarian insufficiency (Achermann *et al.*, 1999; Lourenço *et al.*, 2009; Suntharalingham *et al.*, 2015). Therefore, the dataset seemed validated based on known factors involved in development as well as in genetic conditions in humans.

### Known and novel adrenal-specific genes

Initial analysis focused on genes up-regulated in the adrenal gland compared to controls (Figure 4a, Table 1 and Dataset 2). The most strongly differentially expressed adrenal genes were *CYP17A1* (absolute FC 240.2), *CYP11A1* (absolute FC 115.4), *SULT2A1* (absolute FC 97.3), *STAR* (absolute FC 73.4), *MC2R* (the ACTH receptor) (absolute FC 62.3) and *CYP11B1* (absolute FC 47.8) (Figure 4a–d and Table 1). These genes are known core

components of adrenal steroidogenesis and most are associated with monogenic disorders in humans (Table 1). The most strongly differentially expressed transcription factors were *FOXO4* (absolute FC 10), *NR0B1* (DAX-1) (absolute FC 9.5) and *NR5A1* (SF-1) (absolute FC 7.8) (Figure 5a). Key novel genes or those that have not been extensively studied in the adrenal gland before include *MGARP* (also known as *OSAP*), *MAP3K15*, *ASB4*, *NRK*, and *TDGF1* (Figure 4d). Expression of these genes was confirmed by qRT-PCR and/or immunohistochemistry (Figure 4c, Figure 5b). Analysis of the heatmap for the top 50 differentially expressed genes revealed that several novel genes appear to be highly adrenal-specific (e.g., *ASB4*, *NPR3*, *GRB14*), whereas others are also expressed in the later testis samples, suggesting a potential novel role for these genes in steroidogenesis (see below) (Figure 4d).

### SRY is the primary driver of human testis development

Studies in transgenic mice and humans with *SRY* deletions and translocations have suggested that *SRY* is the primary Y-chromosomal testis-determining gene in humans, but direct evidence is limited (Bashamboo *et al.*, 2017; Hanley *et al.*, 2000; Koopman *et al.*, 2016). *SRY* is thought to be transiently up-regulated in the 46,XY bipotential gonad at around 42 dpc, leading to downstream expression of testis development pathways (Hanley *et al.*, 2000). Analysis of *SRY* expression in early testis samples (CS18–CS19) compared to control tissues (all 46,XY) showed that *SRY* is the only significantly differentially-expressed protein coding Y-chromosomal gene (absolute FC 2,  $P$ -value  $\leq 0.003$ ) (Figure 6a and Dataset 5). Although changes are subtle, there was a clear transient expression of *SRY* that had occurred by the start of our dataset (around 45 dpc), with a reduction in intensity around CS23 (57 dpc) (Figure 6a, Figure 6b).

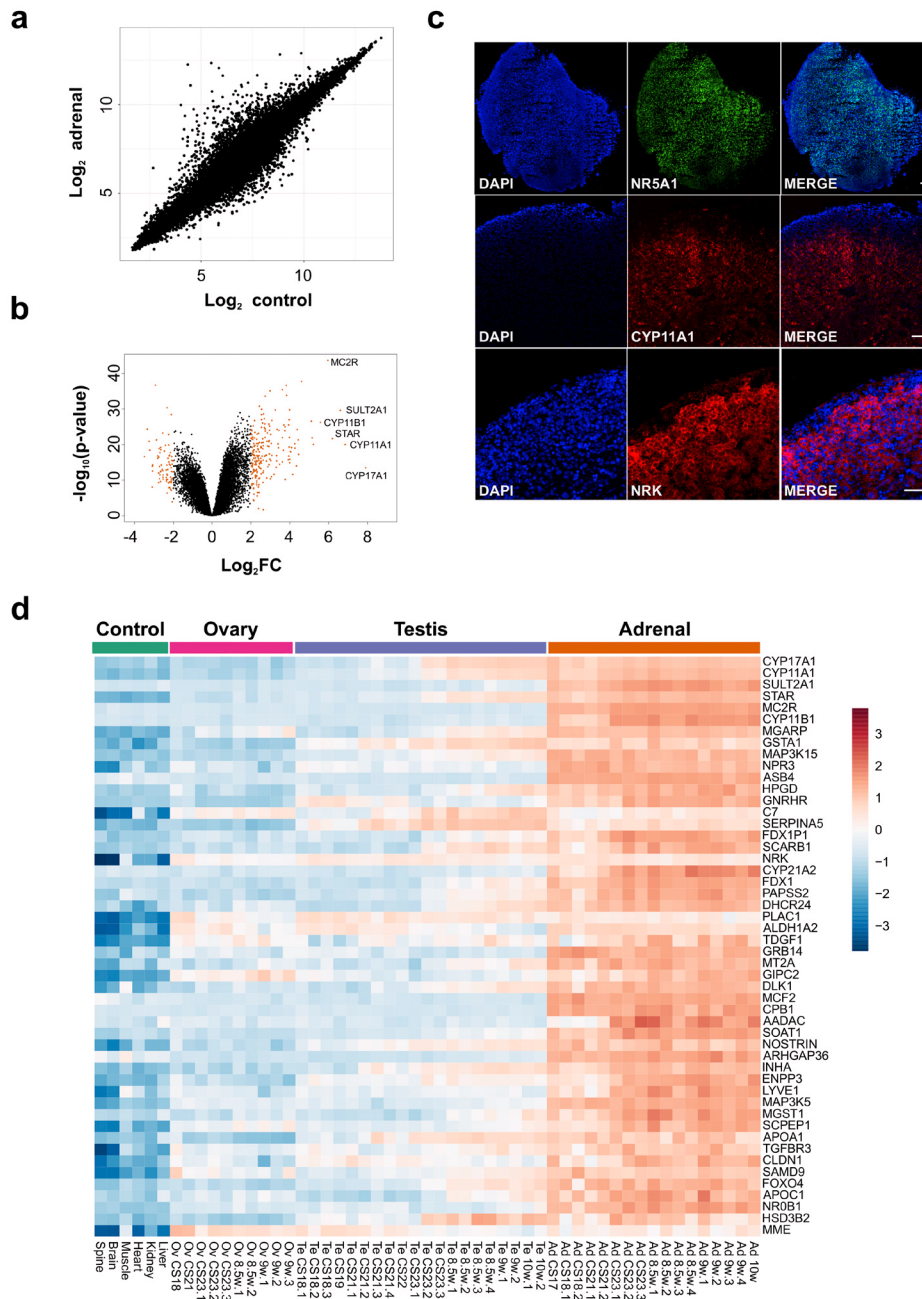
Other genes that are differentially expressed in the early testis compared to controls are shown in the heatmap in Figure 6c, Figure 7a and Figure 7b. These include the gene encoding renin (*REN*) as well as mesonephric factors such as *NPHS2* and *WT1*. Pathway-enrichment analysis using ClueGO confirmed “sex differentiation” and “renal system development” as the two major up-regulated pathways in the dataset (Figure 7c).

### Modelling dynamic changes in the testis downstream of SRY

Studies in mice have shown that *SOX9* is a target of *SRY*, and disruption of *SOX9* in humans results in testicular dysgenesis (Bashamboo *et al.*, 2017; Bishop *et al.*, 2000; Sekido & Lovell-Badge, 2008). However, the dynamics of *SOX9* expression in human testis development are still not well understood and it is not established whether *SOX9* is the only potential *SRY* target (Hanley *et al.*, 2000; Ostrer *et al.*, 2007). Analysis of *SOX9* across the testis series revealed an approximate 2-fold increase in gene expression levels with a curvilinear pattern (Figure 8a).

In order to assess detailed patterns and changes in gene expression across the time series dataset, and to be able to group genes with similar dynamic expression patterns together, a phenomenological

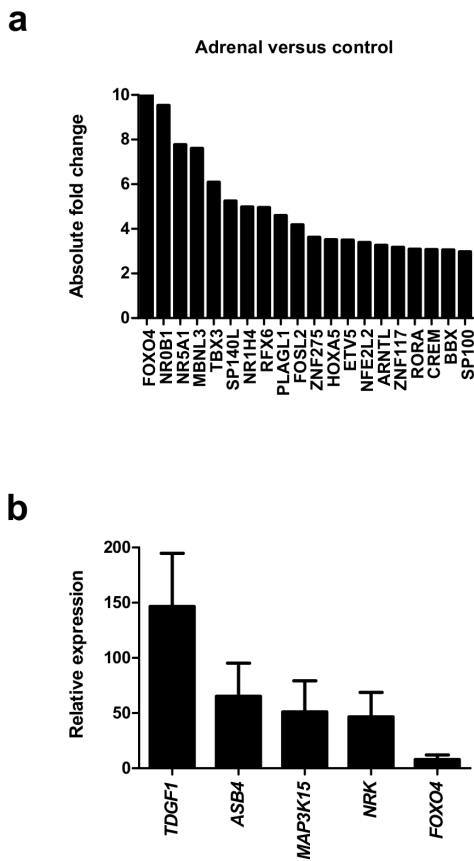




**Figure 4. Differential expression of genes in the adrenal gland.** (a) Correlation plot for  $\log_2$  mean gene expression levels in the adrenal versus control samples (Pearson's product-moment correlation test correlation coefficient=0.96,  $P$ -value $\leq 2.2e-16$ ). (b) Volcano plot analysis of differentially expressed genes in adrenal versus control samples. Genes with a  $\log_2FC \geq 2$  (or  $\log_2FC \leq -2$ ) and  $P$ -values $\leq 0.000005$  are shown in orange. (c) Immunohistochemistry of NR5A1, CYP11A1 and NRK in the human adrenal gland (9 wpc). Nuclei are stained blue with DAPI, which also highlights the outer capsule. Scale bars, 100  $\mu$ m. (d) Heatmap representing normalised gene expression values for the top 50 differentially up-regulated adrenal genes compared to control samples across the whole sample dataset. Genes are ordered according to descending  $\log_2FC$  values. The intensity of gene expression is indicated by a colour scale: blue for lowest and red for highest expression levels. For all samples shown,  $P$ -values $\leq 1e-10$ .

**Table 1. The top 20 differentially expressed adrenal genes and other selected genes associated with monogenic disorders in humans.** Genes are ranked based on  $\log_2FC$  in the adrenal (n=17) compared to control samples (n=6). Further clinical information is available at Online Mendelian Inheritance in Man (OMIM).

Rank	Gene	$\log_2FC$	Fold change	OMIM gene	Clinical condition (monogenic)
1	CYP17A1	7.91	240.2	609300	Congenital adrenal hyperplasia (due to 17 $\alpha$ -hydroxylase deficiency)
2	CYP11A1	6.85	115.4	118485	Congenital adrenal hyperplasia (due to CYP11A1/P450scc deficiency)
3	SULT2A1	6.60	97.3	-	
4	STAR	6.20	73.4	600617	Congenital lipoid adrenal hyperplasia; Familial glucocorticoid deficiency type 3
5	MC2R	5.96	62.3	607397	Familial glucocorticoid deficiency, type 1
6	CYP11B1	5.58	47.8	610613	Congenital adrenal hyperplasia (due to 11 $\beta$ -hydroxylase deficiency)
7	MGARP	5.21	37.1	-	
8	GSTA1	5.15	35.5	-	
9	MAP3K15	5.11	34.5	-	
10	NPR3	4.62	24.6	-	
11	ASB4	4.60	24.3	-	
12	HPGD	4.46	22.0	601688	Cranioosteoarthropathy; Primary hypertrophic osteoarthropathy type 1
13	GNRHR	4.43	21.6	138850	Hypogonadotropic hypogonadism
14	C7	4.34	20.3	217070	C7 (complement) deficiency
15	SERPINA5	4.26	19.2	-	
16	FDX1P1	4.26	19.1	-	
17	SCARB1	4.15	17.8	601040	High-density lipoprotein elevation
18	NRK	4.09	17.1	-	
19	CYP21A2	4.09	17.1	613815	Congenital adrenal hyperplasia (due to 21-hydroxylase deficiency)
20	FDX1	4.03	16.3	-	
21	PAPSS2	4.00	16.0	603005	Brachyolmia type 4 with mild epiphyseal and metaphyseal changes, adrenal hyperandrogenism
22	DHCR24	4.00	15.9	606418	Desmosterolosis
25	TDGF1	3.96	15.6	187395	Forebrain defects
36	INHA	3.67	12.8	147380	Adrenocortical carcinoma (paediatric)
43	APOA1	3.42	10.7	107680	Apolipoprotein A-I deficiency
46	SAMD9	3.34	10.2	610456	MIRAGE syndrome (includes growth restriction, adrenal hypoplasia, testicular dysfunction)
49	NR0B1 (DAX-1)	3.25	9.5	300473	X-linked adrenal hypoplasia congenita
50	HSD3B2	3.19	9.1	613890	Congenital adrenal hyperplasia (due to 3 $\beta$ -hydroxysteroid dehydrogenase deficiency type 2)
60	NR5A1 (SF-1)	2.96	7.8	184757	DSD (testicular dysgenesis/impaired testosterone synthesis) +/- adrenal insufficiency
72	LDLR	2.81	7.0	600694	Familial hypercholesterolaemia
77	AMHR2	2.73	6.7	600956	Persistent Müllerian duct syndrome, type 2
105	POR	2.53	5.8	124015	P450 oxidoreductase deficiency/Antley-Bixler syndrome
117	MRAP	2.43	5.4	615410	Familial glucocorticoid deficiency, type 2
142	NPC1	2.31	5.0	607623	Niemann-Pick disease type C1



**Figure 5. Analysis of differentially expressed adrenal genes.** (a) Absolute fold change (FC) of the top 20 up-regulated transcription factors in the adrenal gland compared to control samples. Data are derived from the array dataset. (b) Confirmation of differential expression of several novel genes in the adrenal gland (9 wpc) by qRT-PCR. Pooled liver, brain and muscle were used as a control. *GAPDH* was used as a housekeeping gene.

mathematical model was developed that allowed expression points of any gene to be described based on the basal gene expression value (“B”), the amplitude of the change (“A”), the localisation time of the maximum transition (“L”), and the rate of transition (“T”) (“BALT model”) (Figure 8b) (See methods for details).

Using this approach, several genes were found to have similar expression dynamics to *SOX9* (Figure 8c, Figure 8d, Table 2 and Supplementary Table 2). Analysis of the heatmap for these factors in the entire dataset showed that a subset of these genes had predominantly testis-specific upregulation (*CITED1*, *ANKRD18A*, *G6PD*, *SLC52A3*, *KEL*, *ZNF280B*, *PRPS2*, *INHBB*) (Figure 8d and Supplementary Figure 1). Immunohistochemistry of human fetal testis showed strong expression of *CITED1* in seminiferous cords in a similar pattern to *SOX9* (Figure 8e). Similar expression data are seen for *CITED1* in the adult testis (*CITED1* in the Human Protein Atlas). Adult expression data confirmed predominant testis expression of *ZNF280B* and *PRPS2*, whereas several other genes are expressed

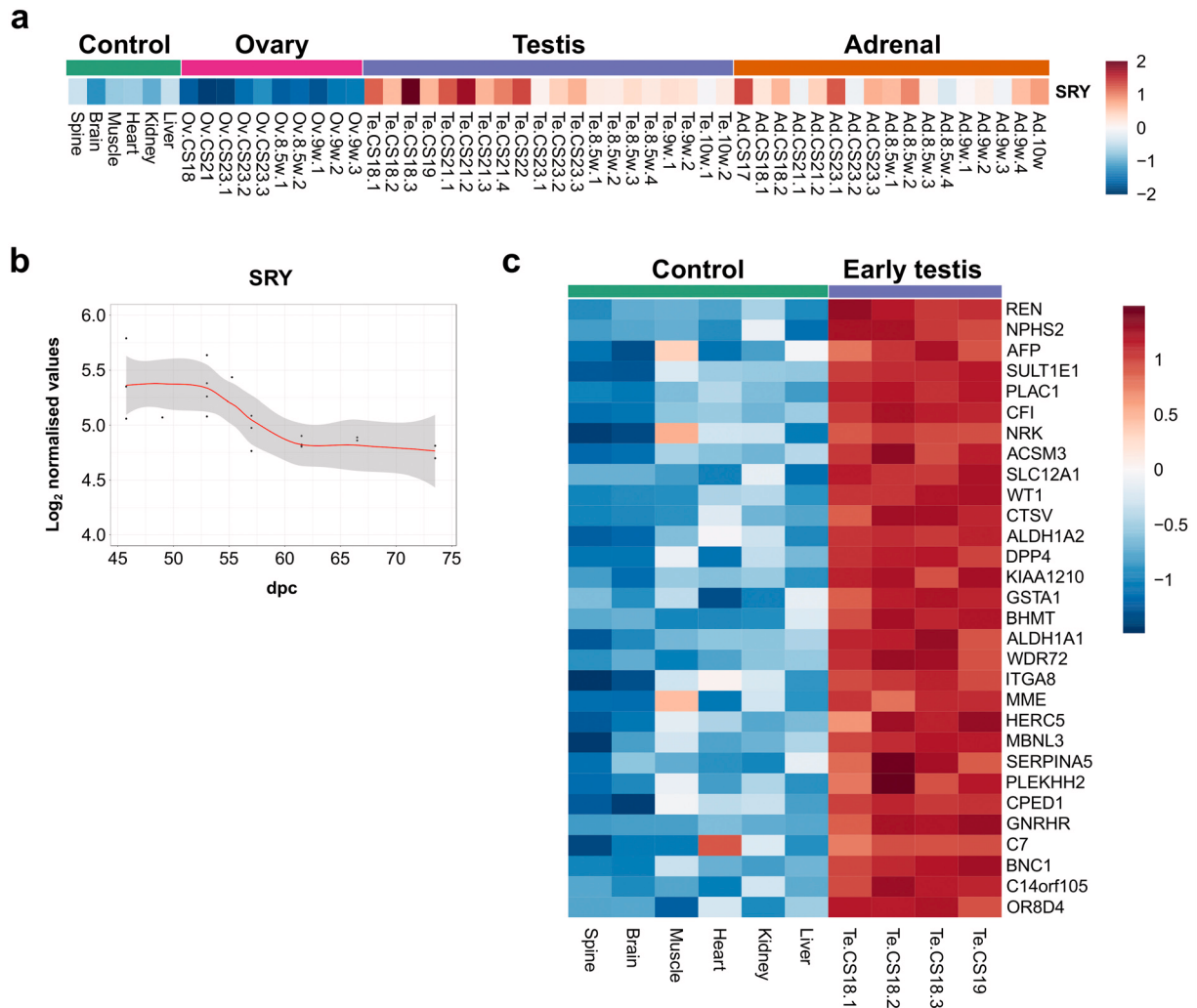
in adult testis but also strongly in at least one other system (e.g., *ANKRD18A*, *SLC52A3*, *KEL*) (Human Protein Atlas). In addition, *INHBB* encodes the  $\beta$ -subunit of inhibin B, a well-established testis protein, which together with *SOX9* provides validation for the dataset (Valeri *et al.*, 2013).

#### Identifying known and novel components of steroidogenesis

Using the “BALT” model across the time-series dataset, the expression of key known components of testis steroidogenesis showed marked upregulation around a fixed time point (“L”) between 54–57 dpc (*LHCGR*, *STAR*, *CYP11A1*, *HSD3B2*, *CYP17A1*, *HSD17B3*) (Figure 9a). Expression levels of all these enzymes showed a sigmoid-type pattern, suggesting that discrete biological events occur in this fixed window (Supplementary Table 3). The heatmap of normalised gene expression plots for these enzymes showed similar discrete changes between early testis (CS18 to CS22) and late testis (F1 to F3) for many known components involved in testosterone synthesis (Figure 9b). Principal components analysis also demonstrated segregation of samples into two distinct groups (Figure 10a). A subset of genes was seen to be up-regulated with age in a correlation plot (Figure 10b), and pathway-enrichment analysis strongly reflected processes involving “cholesterol”, “sterol” and “steroid” metabolism or biosynthesis (Figure 10c). Therefore, CS23 (8 weeks) was a discrete point around which the onset of testicular steroidogenesis could be modelled, and samples either side of this time point were used for “pre-steroidogenesis” (“early”) versus “post-steroidogenesis” (“late”) comparisons. An overview of key genes in this dataset, many of which are associated with monogenic disorders in humans, is shown in Table 3.

In order to identify potential novel core components of steroidogenesis in the adrenal gland and testis, genes were identified that were both up-regulated in late testis samples compared to early ones (post-steroidogenesis versus pre-steroidogenesis,  $\log_2FC \geq 1$ ), and up-regulated in adrenal samples versus controls (adrenal versus controls,  $\log_2FC \geq 2$ ) (Figure 11a). A total of 45 overlapping genes were found, including all relevant known steroidogenic enzymes and 17 novel genes (Figure 11a–c, Table 4). Enrichment-pathway analysis showed upregulation of genes involved in “cholesterol transport and metabolism” as well as “steroid biosynthesis”, further validating the analysis (Figure 11d). The heatmap for these 45 genes confirmed highly selective expression in the fetal adrenal gland and in the fetal testis, but largely after CS23 (Figure 11c).

An overview of the proposed function of the 17 potentially novel factors is shown in Table 5. These genes include *MGARP* (also known as *OSAP*), which may be involved in mitochondrial trafficking, *MAP3K15* (*ASK3*) involved in cell signalling of stress, and the imprinted gene *DLK1* (*PREF1*) implicated in growth and differentiation (Guasti *et al.*, 2013; Naguro *et al.*, 2012; Zhou *et al.*, 2011). Two genes that have not been studied previously are *GRAMD1B* and *RMDN2* (*FAM82A1*). These genes are clearly expressed with the onset of steroidogenesis (Figure 11b,c)



**Figure 6. SRY expression in early human testis and differential expression of other genes.** (a) Heatmap showing normalised gene expression values for *SRY* across the whole sample dataset. (b) Scatter plot of normalised gene expression of *SRY* in testis samples between 45 and 74 dpc. Loess method was used to fit a smooth curve between expression values. (c) Heatmap representing normalised gene expression values for the top 30 differentially up-regulated genes in early testis samples (CS18 and CS19 stages) ( $N=4$ ) compared to control samples ( $N=6$ ). Genes are ordered according to decreasing  $\log_2FC$  values. The intensity of gene expression is indicated by a colour scale: blue for lowest and red for highest expression levels. For all samples shown,  $P$ -values  $\leq 0.05$ .

and show strong expression in the cytoplasm of NR5A1 (SF-1) positive fetal Leydig cells and adrenal cells by immunohistochemistry (Figure 12a–c, Supplementary Figure 2a,b and Supplementary Figure 3a). However, currently the true biological function of these genes remains unknown. The transcription factor FOXO4 showed expression in the nuclei of Leydig cells in the fetal testis (Figure 12d).

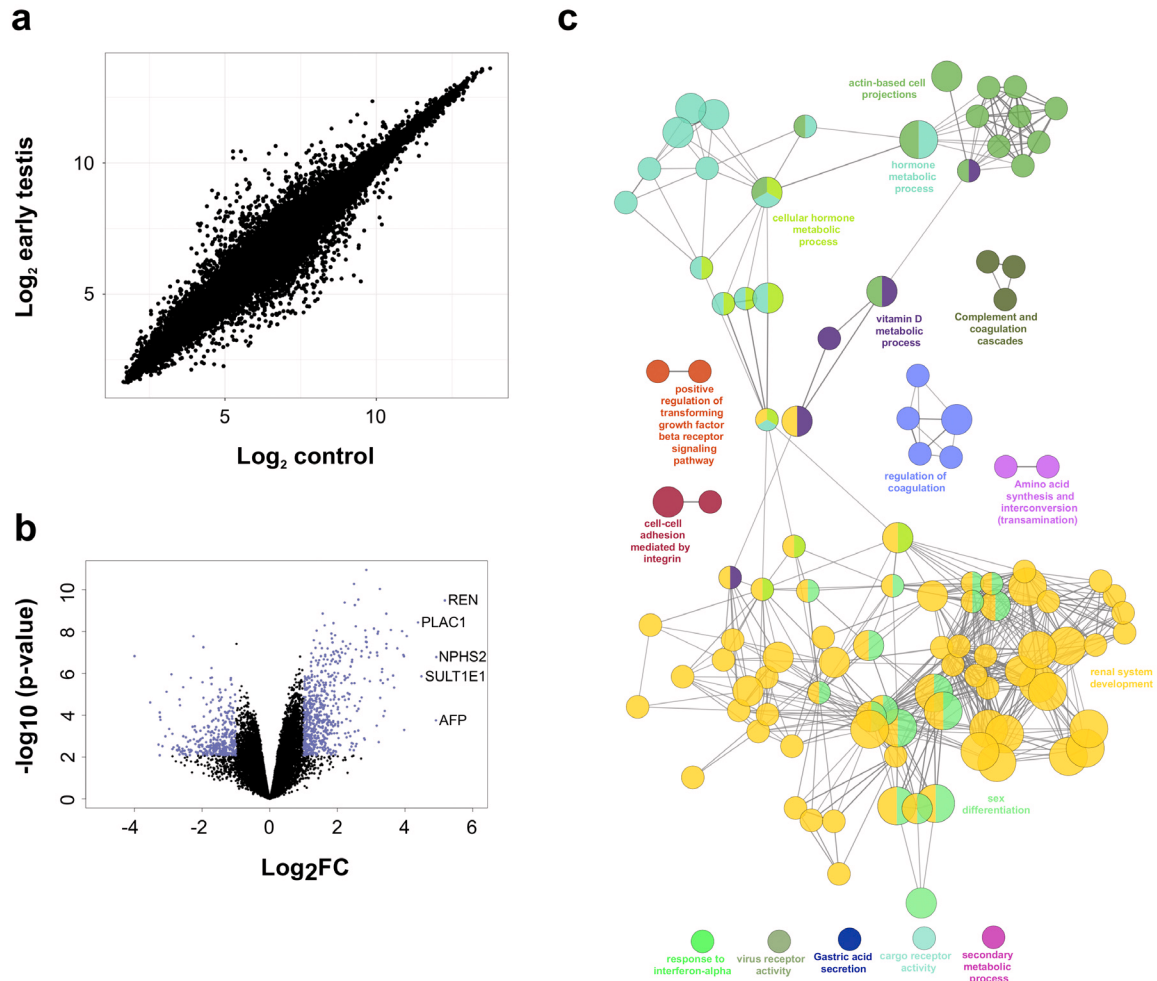
#### Identification of potential secreted proteins in the testis

The analysis of genes that showed progressive upregulation in the developing testis was extended to try to identify novel biomarkers. The protein structures encoded by genes that were up-regulated in late testis samples (F1 to F3;  $FC \geq 1$ , Dataset 6) were reviewed for characteristics of secreted proteins, such as the presence of a cleaved signal peptide. Using this approach,

the three major testis biomarkers Anti-Müllerian Hormone (*AMH/MIS*), inhibin  $\alpha$ -subunit (*INHA*) and insulin-like 3 (*INSL3*) were identified (Figure 13a–c). Novel factors identified included EGFLAM, CARTPT, ADAMTS5, SCUBE1 and EPPIN (Figure 13a). Expression of SCUBE1 was shown in seminiferous cords in the developing testis (Figure 13d).

#### Ovarian development is not a passive process

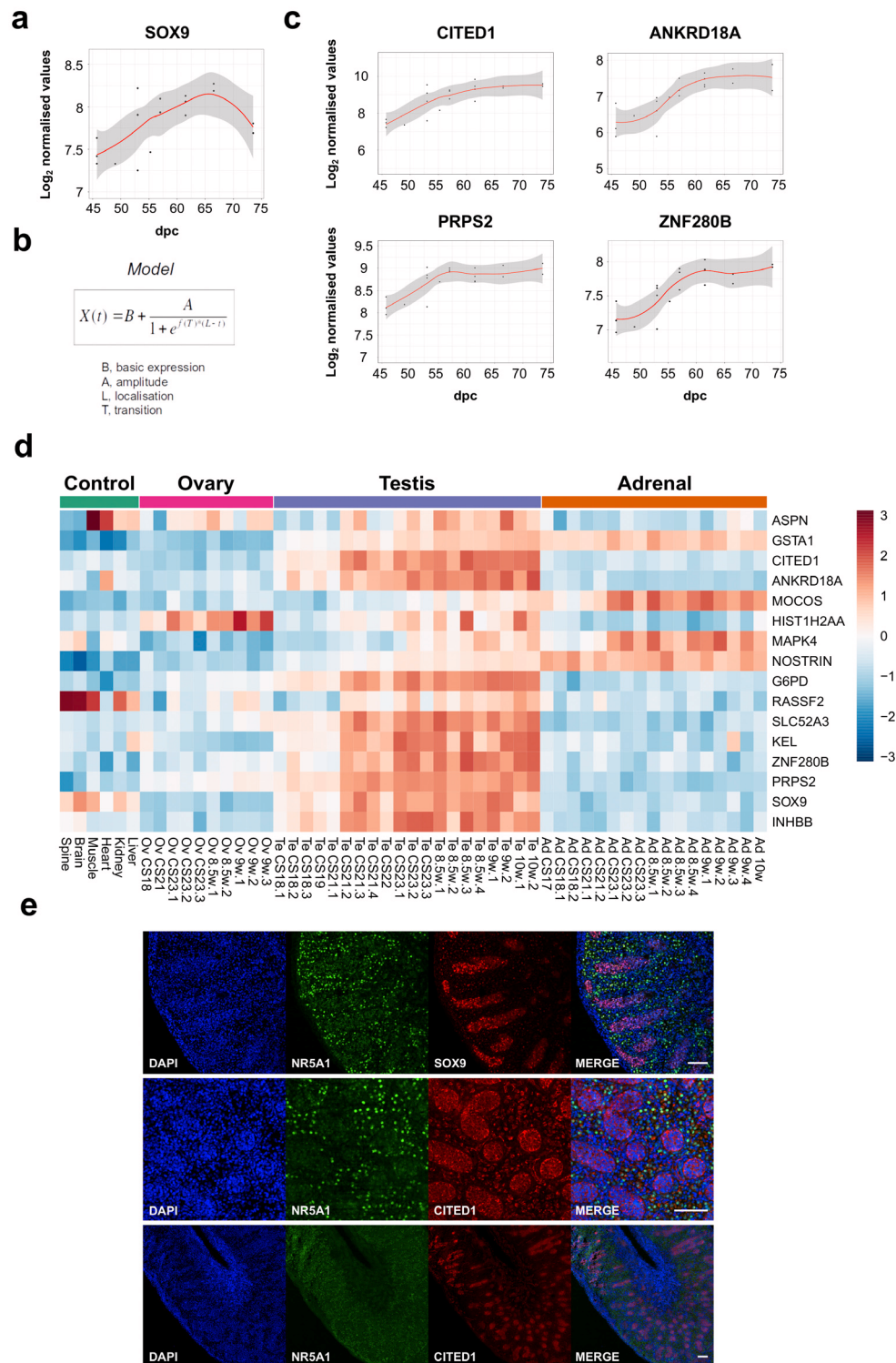
Although ovary development was once thought to be a less biologically active process, several studies in the mouse have shown changes in discrete sets of differentially expressed genes in the early ovary (Beverdam & Koopman, 2006; Jameson et al., 2012; Nef et al., 2005). However, it is unclear whether similar effects are also present during early human gonad development.



**Figure 7. Differentially expressed genes in the early testis compared to control samples.** (a) Correlation plot for  $\text{log}_2$  mean gene expression levels in the early testis (CS18 to CS19) ( $N=4$ ) versus control samples ( $N=6$ ) (Pearson's product-moment correlation test correlation coefficient=0.968,  $P$ -values  $\leq 2.2\text{e-}16$ ). (b) Volcano plot for the differentially expressed genes in early testis versus control samples. Purple colour indicates genes with absolute  $\text{log}_2\text{FC} \geq 1$  and  $P$ -value  $\leq 0.05$ . (c) Pathway-enrichment analysis using ClueGO for differentially expressed up-regulated pathways in early testis compared to control samples ( $\text{log}_2\text{FC} \geq 1$ ,  $P$ -values  $\leq 0.005$ ).

By studying up-regulated genes in the ovary and comparing them to control samples, (Dataset 4) and by studying up-regulated genes in the testis and comparing them to controls (Dataset 3), very similar numbers of gonad-specific differentially expressed genes were found ( $\text{log}_2\text{FC} \geq 1$ , ovary 274 versus testis 280;  $\text{log}_2\text{FC} \geq 2$ , ovary 69 versus testis 57) (Figure 14a). As expected, there was substantial overlap in genes that were co-expressed in both the ovary and the testis ( $\text{log}_2\text{FC} \geq 1$ , 463;  $\text{log}_2\text{FC} \geq 2$ , 68). Although the number of strongly up-regulated genes was somewhat higher in the testis compared to the ovary when observed in a volcano plot (Figure 14b and Dataset 7), in part due to Y chromosomal genes, a similar scatter of up- and down-regulated genes was seen for the ovary versus control as for the testis versus control, again reinforcing the concept of the developing ovary having discrete genetic activity (Figure 14c).

Analysis of the top 20 up-regulated genes in the ovary compared to control data is shown in the heatmap in Figure 14d. Many of these genes were also expressed to some extent in the testis, and may represent factors involved in pluripotency and germ cell development such as HIST1H2BA, NANOG and POU5F1 (also known as OCT4). Expression of several genes appeared to increase in the ovary across the time course (CS18 to F2) and to decrease in the testis, such as *OR10G9*, *GABRG1*, *OR4D5*, *NPNT*, *CNTNAP4* and *NPY* (Figure 14d). These genes could potentially encode novel components of an ovary-specification program. However, pathway-enrichment analysis of the 274 genes differentially up-regulated in the ovary compared to controls ( $\text{log}_2\text{FC} \geq 1$ ,  $P < 0.05$ ) resulted in very few biological processes other than “germ cell development” and “type 1 interferon signalling pathway”



**Figure 8. Identification of potential genes downstream of SRY using the BALT model.** (a) Scatter plot showing curvilinear upregulation of *SOX9* during testis development (45 to 74 dpc). Loess method was used for fitting a smooth curve between variables. (b) Equation used in the BALT mathematical model (see methods for details). (c) Scatter plots showing changes in gene expression patterns for *CITED1*, *ANKRD18A*, *PRPS2* and *ZNF280B* in the developing testis (45 to 74 dpc). Loess method was used for fitting a smooth curve between variables. (d) Heatmap representing normalised gene expression values for genes showing similar expression patterns to *SOX9*, based on the BALT mathematical model. The intensity of gene expression is indicated by a colour scale: blue for lowest and red for highest expression levels. For all samples shown,  $P$ -values  $\leq 0.005$ . (e) Immunohistochemistry for NR5A1 (SF-1, staining Leydig cells), SOX9, and CITED1 in the human fetal testis (11 wpc). Nuclei are counterstained blue with DAPI. Scale bars, 100  $\mu$ m.

**Table 2. Potential biological functions of genes up-regulated during early testis development.** Monogenic disorders associated with these factors are shown in italics. Potential function has been summarised from data in the [GeneCards database](#).

Gene	Protein	Potential function
ASPN	Asporin	Leucine-rich repeat (LRR) protein associated with the cartilage matrix
GSTA1	Glutathione- S-transferase, alpha-1	Enzyme involved in detoxification of cellular compounds by conjugation with reduced glutathione
CITED1	CBP/p300-interacting transactivator with Glu/Asp-rich-C-terminal domain	Transcriptional co-regulator
ANKRD18A	Ankyrin repeat domain-containing protein 18A	Unknown
MOCOS	Molybdenum cofactor sulfurase	Enzyme involved in sulphuration of the molybdenum cofactor of xanthine dehydrogenase and aldehyde oxidase
HIST1H2AA	Histone gene cluster 1, H2A histone family, member A	Replication-dependent histone
MAPK4	Mitogen-activated protein kinase 4	Regulator of cell signalling
NOSTRIN	Nitric oxide synthase trafficker	Protein that binds endothelial nitric oxide synthase (eNOS) and triggers translocation of ENOS from the plasma membrane to sub-cellular structures
G6PD	Glucose-6-phosphate dehydrogenase	Enzyme involved in generation of NADPH in the hexose monophosphate pathway ( <i>associated with G6PD deficiency</i> )
RASSF2	RAS association domain family protein 2	Protein that interacts with RAS proteins in cell growth and mitogenesis
SLC52A3	Solute carrier family 52, member 3	Transmembrane protein that mediates cellular uptake of riboflavin ( <i>associated with Brown-Vialetto-van Laere syndrome type 1</i> )
KEL	Kell blood group metalloendopeptidase	Metalloendopeptidase that generates active endothelin-3 from big endothelin-3
ZNF280B	Zinc finger protein 280B	Transcription factor that upregulates expression of MDM2 and negatively regulates p53
PRPS2	Phosphoribosylpyrophosphate synthetase 2	Enzyme involved in regulation of nucleotide production pathways
SOX9	SRY-box 9	Transcription factor involved in the regulation of testis development
INHBB	Inhibin beta B	Growth and differentiation factor involved in reproduction and development

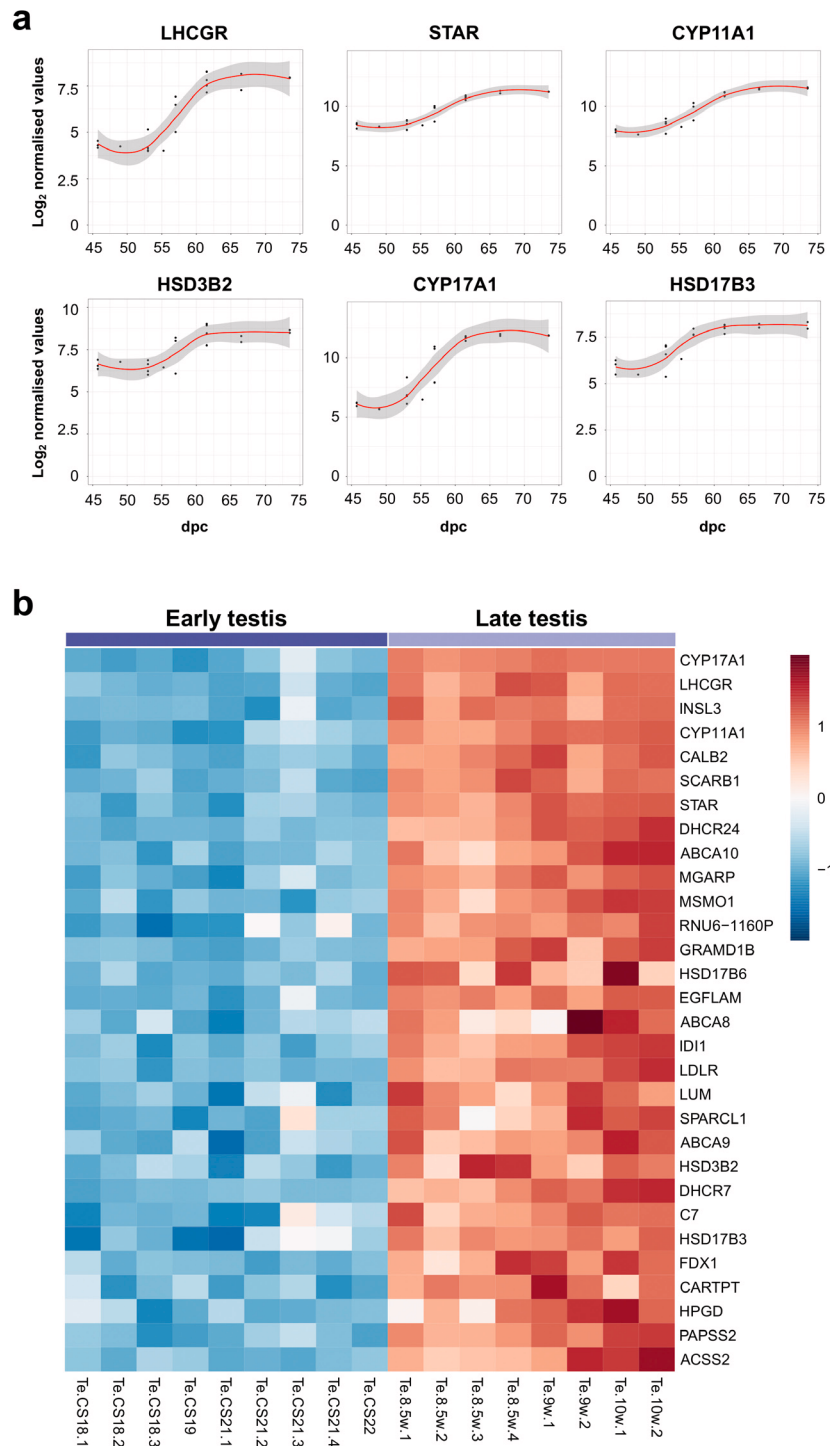
(Figure 15a). In contrast, pathway-enrichment analysis for the 280 genes up-regulated in the testis samples versus controls ( $\log_2FC \geq 1$ ,  $P < 0.05$ ) revealed many more detailed networks, with enrichment in terms such as “androgen” and “reproductive” processes (Figure 15b). Taken together, these data suggest that current knowledge of the genetic events in the early stages of human ovary development is still very limited.

## Discussion

Adrenal development and gonad development are two of the most fundamental biological processes. However, current knowledge about the genetic mechanisms underlying these events is derived largely from studies in mice (Beverdam & Koopman, 2006; Inoue *et al.*, 2016; Jameson *et al.*, 2012; McClelland *et al.*, 2015; McClelland & Yao, 2017; McDowell *et al.*, 2012; Nef *et al.*,

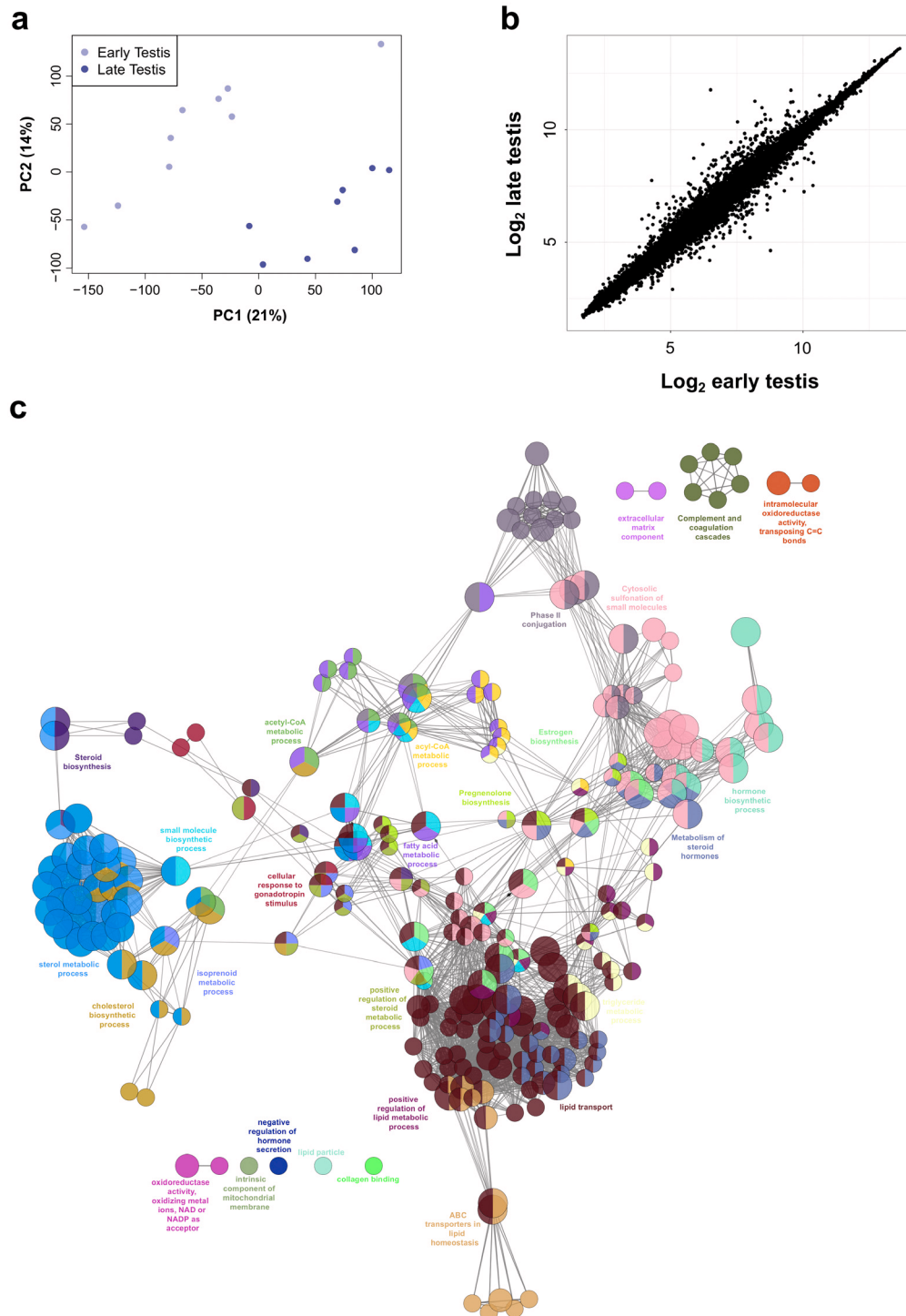
2005; King *et al.*, 2015) and few data are currently available from humans (Fowler *et al.*, 2009; Gerrard *et al.*, 2016; Houmard *et al.*, 2009; O’Shaughnessy *et al.*, 2007), especially during the first trimester or across all three tissues. Of the published data, the recent study from Gerrard *et al.* provides the most detailed insight into early human adrenal and testis expressed genes currently available, but this work included just two samples from pooled RNA between CS18 and CS22 (Gerrard *et al.*, 2016). Given the potential biological differences between species, as well as a lack of detailed time course data for all three tissues, our aim was to generate a detailed “Atlas” of genomic events across a critical period in human embryonic and fetal development (6 to 10 wpc).

Initial analysis focused on global gene expression patterns in the adrenal, testis and ovary compared to control tissues. Control



**Figure 9. Determination of genes up-regulated with the onset of fetal testicular steroidogenesis.** (a) Scatter plots showing changes in gene expression patterns for known testicular steroidogenic genes, *LHCGR*, *STAR*, *CYP11A1*, *HSD3B2*, *CYP17A1* and *HSD17B3*. The plot shows normalised gene expression values for testis samples between approximately 46 and 74 dpc. Loess method was used for fitting a smooth curve between variables. (b) Heatmap representing normalised gene expression values for the top 30 differentially up-regulated genes when comparing late (F1 to F3) ( $N=8$ ) and early (CS18 to CS22) ( $N=9$ ) testis samples. The intensity of gene expression is indicated by a colour scale: blue for lowest and red for highest expression levels. For all samples shown,  $P$ -values  $\leq 1e-4$ . Genes are ordered according to descending  $\log_2FC$  values.

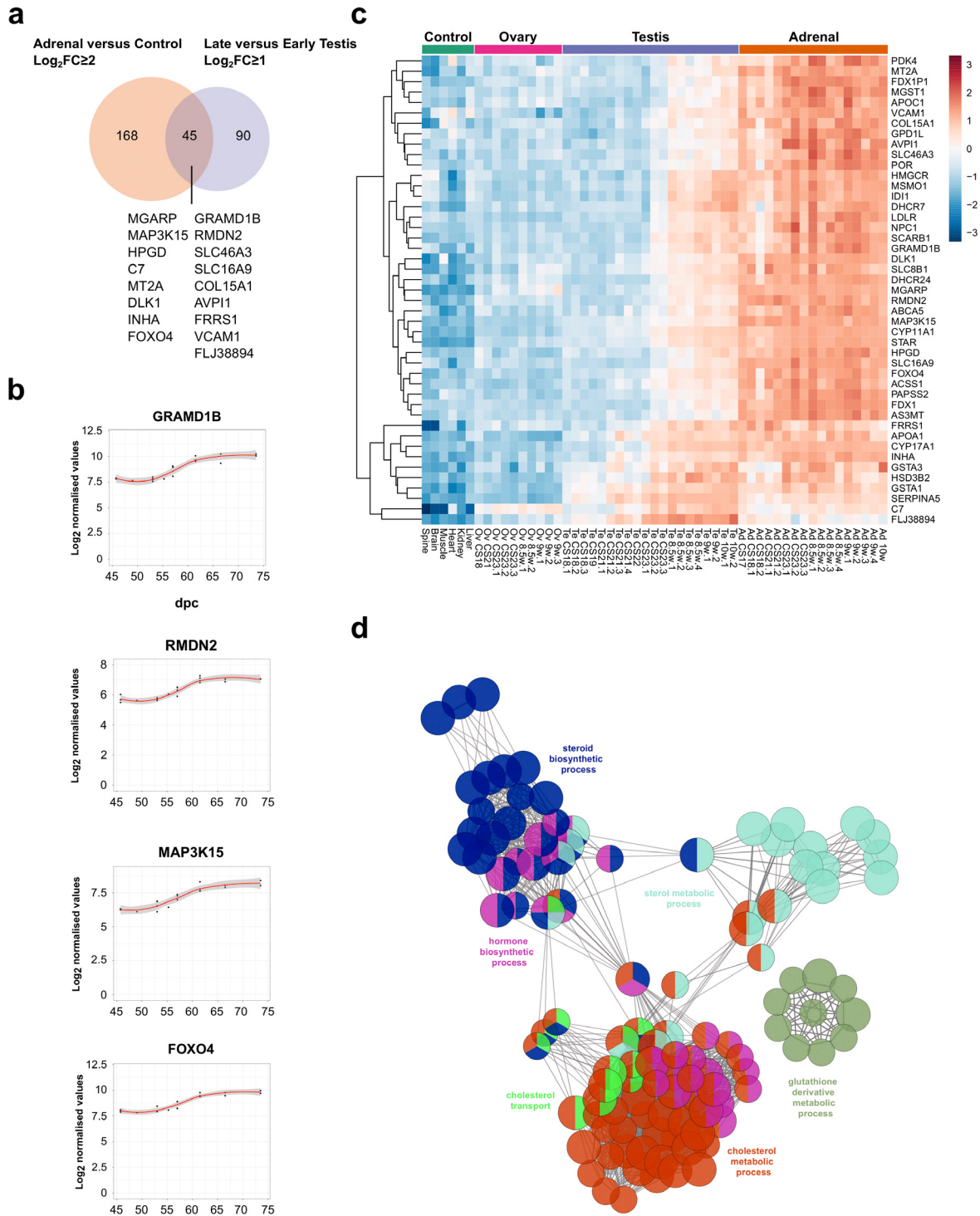




**Figure 10. Differential gene expression in early compared to late testis samples.** (a) Principal component analysis of early ( $N=9$ ) compared to late ( $N=8$ ) testis samples. The scatter plot shows samples plotted on the two first principal components (PC1, PC2). (b) Correlation plot for  $\log_2$  mean gene expression levels in the early testis (CS18 to CS22) versus late testis (F1 to F3) samples (Pearson's product-moment correlation test correlation coefficient=0.992,  $P$ -value $< 2.2e-16$ ). (c) Pathway-enrichment analysis using ClueGO for differentially up-regulated genes in early testis compared to late testis samples ( $\log_2FC \geq 1$ ,  $P$ -values  $\leq 0.01$ ).

**Table 3. The top 20 differentially expressed genes after the onset of testicular steroidogenesis (“late testis” vs “early testis”), with any associated clinical conditions in humans.** Several other high-ranking genes associated with monogenic disorders are also shown. Genes are ranked based on  $\log_2FC$  in the late testis (n=8) compared to early testis (n=9). Further clinical information is available at Online Mendelian Inheritance in Man (OMIM).

Rank	Gene	$\log_2FC$	Fold change	OMIM gene	Clinical condition (monogenic)
1	CYP17A1	5.27	38.5	609300	Congenital adrenal hyperplasia (due to 17 $\alpha$ -hydroxylase deficiency)
2	LHCGR	3.47	11.1	152790	Leydig cell hypoplasia
3	INSL3	3.13	8.8	146738	Cryptorchidism
4	CYP11A1	3.08	8.5	118485	Congenital adrenal hyperplasia (due to CYP11A1/P450scc deficiency)
5	CALB2	2.86	7.3		
6	SCARB1	2.83	7.1	601040	High-density lipoprotein elevation
7	STAR	2.54	5.8	600617	Congenital lipoid adrenal hyperplasia; Familial glucocorticoid deficiency type 3
8	DHCR24	2.22	4.6	606418	Desmosterolosis
9	ABCA10	2.21	4.6		
10	MGARP	2.16	4.5		
11	MSMO1	2.12	4.3	607545	Microcephaly, congenital cataract and psoriasiform dermatitis
12	RNU6-1160P	2.11	4.3		
13	GRAMD1B	2.04	4.1		
14	HSD17B6	2.03	4.1		
15	EGFLAM	2.02	4.1		
16	ABCA8	2.02	4.0		
17	IDI1	2.01	4.0		
18	LDLR	1.95	3.9	600694	Familial hypercholesterolaemia
19	LUM	1.95	3.9		
20	SPARCL1	1.94	3.8		
22	HSD3B2	1.92	3.8	613890	Congenital adrenal hyperplasia (due to 3 $\beta$ -hydroxysteroid dehydrogenase deficiency type 2)
23	DHCR7	1.92	3.8	602858	Smith-Lemli-Opitz syndrome
24	C7	1.87	3.7	217070	C7 (complement) deficiency
25	HSD17B3	1.87	3.7	605573	17 $\beta$ -hydroxysteroid dehydrogenase deficiency type 3
28	HPGD	1.84	3.6	601688	Cranioosteoarthropathy; Primary hypertrophic osteoarthropathy type 1
29	PAPSS2	1.83	3.5	603005	Brachyolmia type 4 with mild epiphyseal and metaphyseal changes, adrenal hyperandrogenism
41	FDPS	1.61	3.0	134629	Porokeratosis type 9
42	MVD	1.59	3.0	603236	Porokeratosis type 7
49	NPC1	1.55	2.9	607623	Niemann-Pick disease type C1
68	INHA	1.40	2.6	147380	Adrenocortical carcinoma (paediatric)
100	AMH	1.18	2.3	600956	Persistent Müllerian duct syndrome, type 1
119	POR	1.07	2.1	124015	P450 oxidoreductase deficiency, Antley-Bixler syndrome



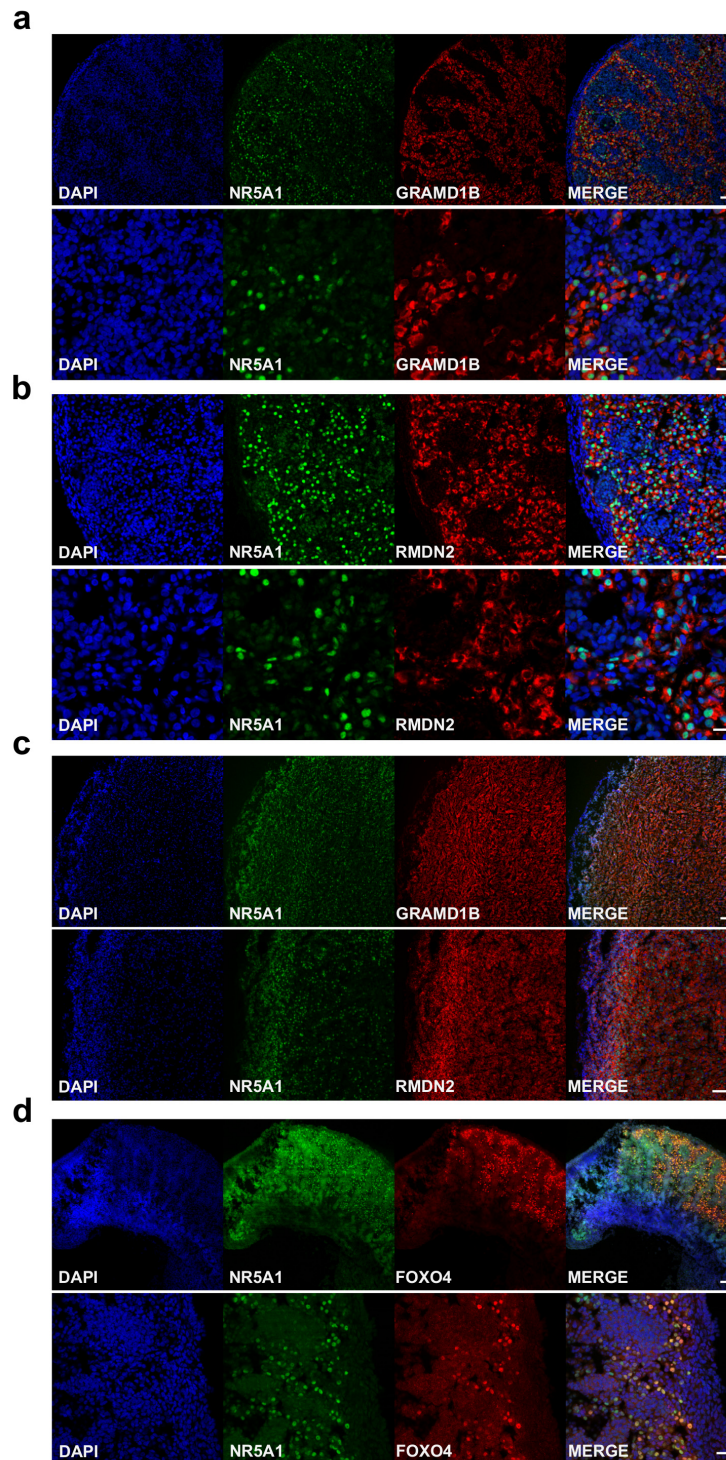
**Figure 11. Identification of novel steroidogenesis genes.** (a) Venn diagram displaying the overlap for up-regulated genes between adrenal and control samples ( $\text{log}_2\text{FC} \geq 2$ ) with late versus early testis samples ( $\text{log}_2\text{FC} \geq 1$ ). A subset of genes found in the intersection are displayed, which are not yet established components of steroidogenesis. In all cases,  $P\text{-value} \leq 0.05$ . (b) Scatter plots showing changes in gene expression patterns for four novel factors, *GRAMD1B*, *RMDN2*, *MAP3K15*, and *FOXO4*. The plot shows normalised gene expression values for testis samples between approximately 46 and 74 dpc. Loess method was used for fitting a smooth curve between variables. (c) Heatmap representing normalised gene expression values for the 45 genes identified in the intersection between adrenal versus control and late testis versus early testis. The intensity of gene expression is indicated by a colour scale: blue for lowest and red for highest expression levels. Row-based unsupervised hierarchical clustering was performed. (d) Pathway-enrichment analysis using ClueGO for the 45 genes identified in the intersection shown in (a).

**Table 4. Known and potentially novel genes identified as components of steroidogenesis in humans.** These 45 genes were determined from the overlap between genes differentially expressed in the adrenal gland vs. control ( $\log_2FC \geq 2$ ) and in the testis vs. control ( $\log_2FC \geq 1$ ).

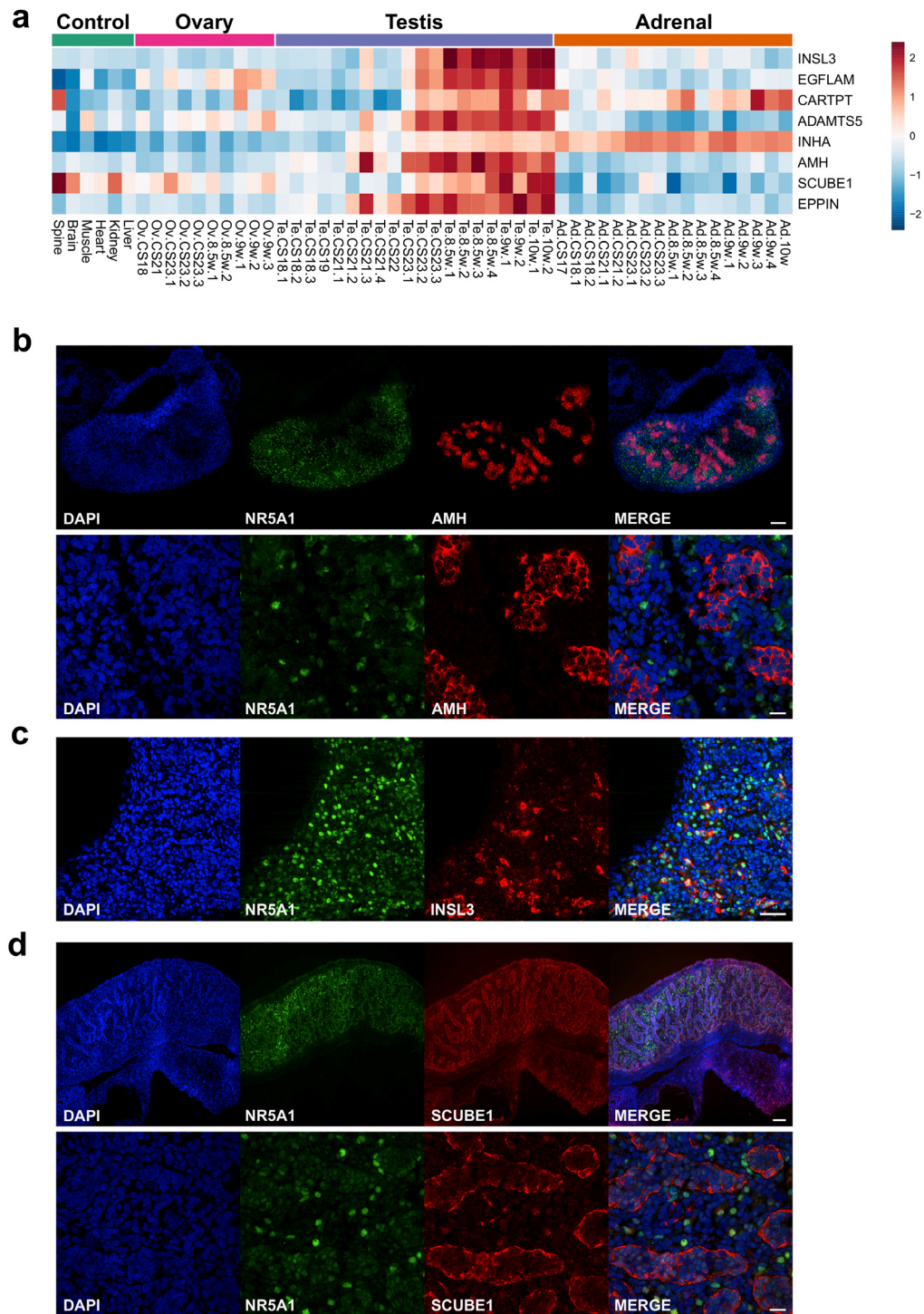
<b>Steroidogenesis</b>
<i>CYP17A1, CYP11A1, STAR, FDX1P1, FDX1, PAPSS2, HSD3B2, POR</i>
<b>Cholesterol metabolism &amp; oxidative stress</b>
<i>SERPINA5, SCARB1, DHCR24, APOA1, APOC1, MSMO1, AS3MT, LDLR, DHCR7, ACSS1, NPC1, PDK4, ABCA5, IDI1, GPD1L, HMGCR</i>
<b>Oxidative stress</b>
<i>GSTA1, MGST1, SLC8B1, GSTA3</i>
<b>Novel</b>
<i>MGARP (OSAP), MAP3K15, HPGD, C7, MT2A, DLK1 (PREF1), INHA, FOXO4, GRAMD1B, RMDN2, SLC46A3, SLC16A9, COL15A1, AVPI1, FRRS1, VCAM1, FLJ38894</i>

**Table 5. Overview of potentially novel genes identified in human steroidogenesis.** Potential function has been summarized from data in the GeneCards database, [www.genecards.org](http://www.genecards.org).

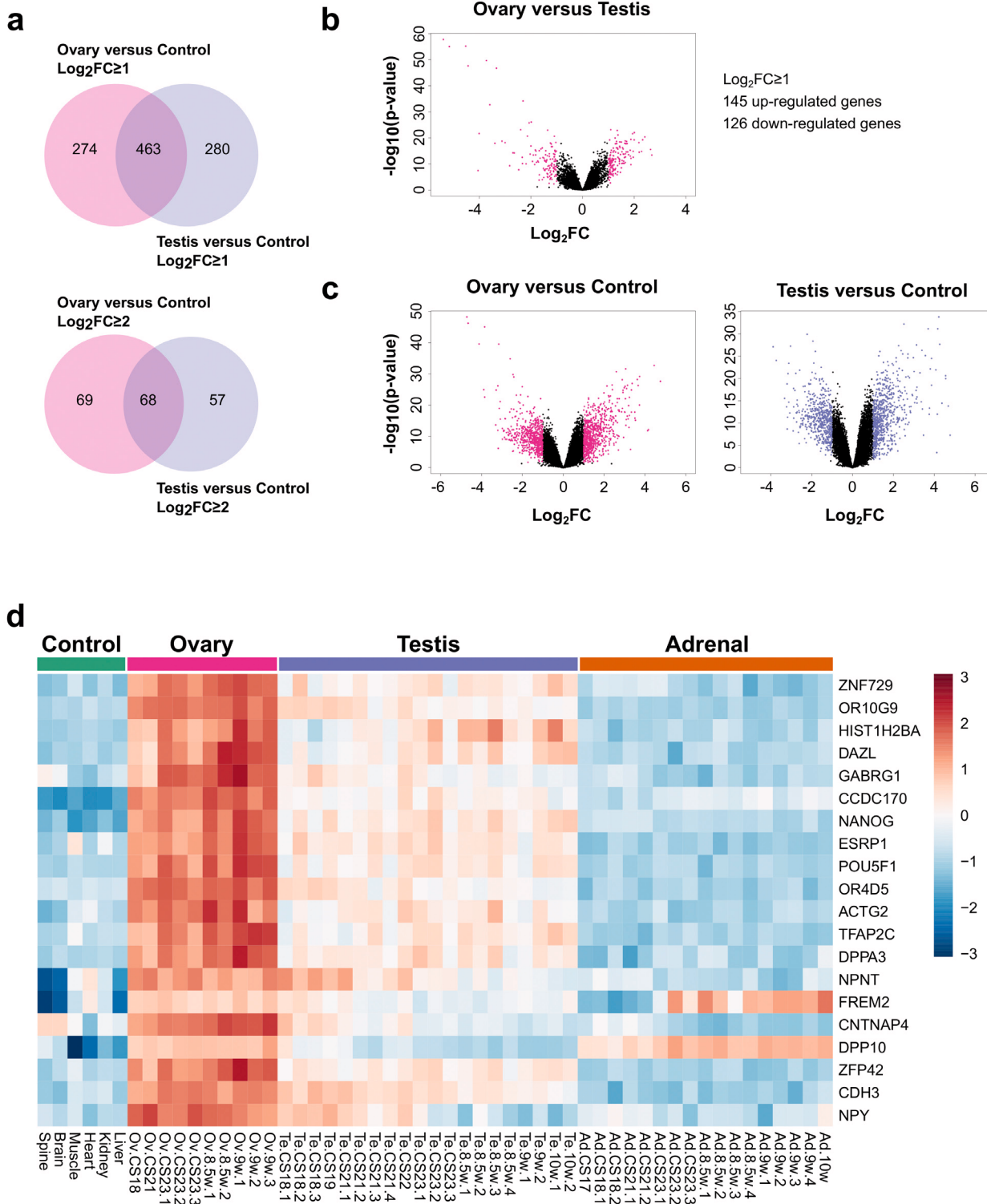
Rank	Gene	Protein	OMIM gene	Potential function
1	MGARP (OSAP)	Mitochondria localized glutamic acid rich protein	-	Possible mitochondrial integrity and trafficking of mitochondria along microtubules
2	MAP3K15 (ASK3)	Mitogen-activated protein kinase kinase kinase 15	300820	Cell signalling of stress and apoptosis
3	HPGD	15-hydroxyprostaglandin dehydrogenase	601688	Metabolism and degradation of prostaglandins and NAD-dependent dehydrogenation
4	C7	Complement component 7	217070	Cytolytic phase of complement activation forming part of the membrane attack complex
5	MT2A	Metallothionein 2A	156360	Possible regulation of oxidative stress and binding to metal ions
6	DLK1 (PREF1, FA1)	Delta-like non-canonical notch ligand 1	176290	Imprinted (paternally expressed) regulator of cell growth and differentiation
7	INHA	Inhibin alpha	147380	Alpha subunit of TGF-beta glycoprotein hormone involved in regulation of hormone secretion, cell growth and apoptosis. Variants implicated in paediatric adrenal cancer.
8	FOXO4	Forkhead box O4	3000033	Transcription factor involved in oxidative stress, growth and differentiation, and leukaemia
9	GRAMD1B	GRAM domain containing 1B	(612559)	Locus has susceptibility to chronic lymphocytic leukaemia
10	RMDN2 (FAM82A1)	Regulator of microtubule dynamics 2	611872	Microtubule association during cell division
11	SLC46A3	Solute carrier family 46, member 3	616764	Membrane transport of small molecules
12	SLC16A9	Solute carrier family 16, member 9	614242	Monocarboxylic acid transporter across plasma membranes
13	COL15A1	Collagen type XV, alpha-1	120325	Structural component of muscle and vessels, possible precursor of restin (antiangiogenic)
14	AVPI1	Arginine vasopressin induced 1	-	May be involved in MAP kinase activation and cell cycling
15	FRRS1	Ferric chelate reductase 1	611578	Reduces ferric to ferrous iron before its transport from the endosome to cytoplasm
16	VCAM1	Vascular cell adhesion molecule 1	192225	Glycoprotein expressed in endothelial cells, interacts with integrins on leukocytes to mediate adhesion and signal transduction
17	FLJ38894	-	-	



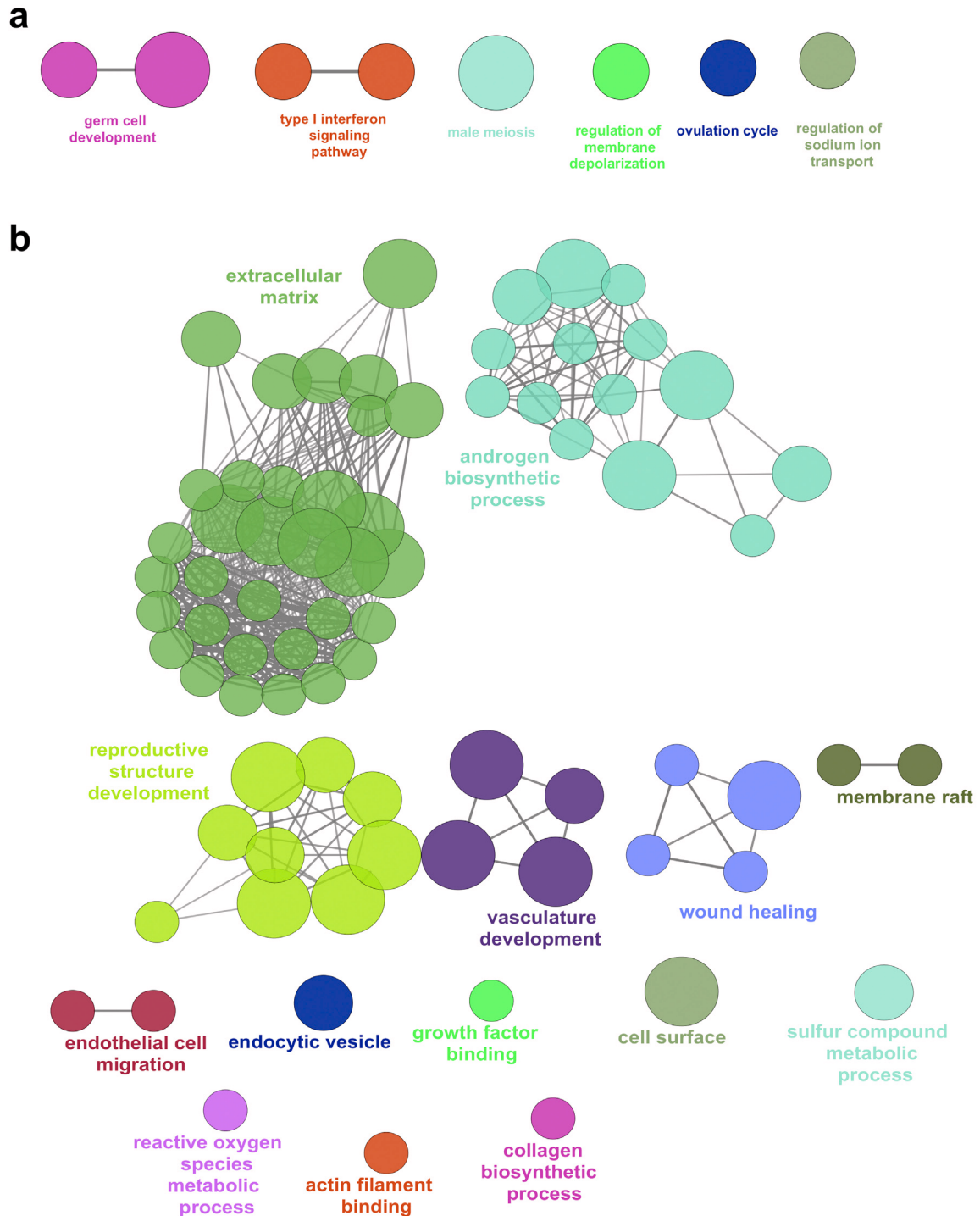
**Figure 12. Validation of novel steroidogenic genes.** (a) Immunohistochemistry for GRAMD1B in human fetal testis at 9 wpc. NR5A1 (SF-1) was used to highlight Leydig cells (green). DAPI was used to counterstain nuclei (blue) and to highlight the outer capsule. Scale bars, 50  $\mu\text{m}$  (top panels) and 20  $\mu\text{m}$  (bottom panels). (b) Immunohistochemistry of RMDN2 performed as above. Scale bars, 50  $\mu\text{m}$  (top panels) and 20  $\mu\text{m}$  (bottom panels). (c) Immunohistochemistry of GRAMD1B and RMDN2 in the fetal adrenal gland at 9 wpc. NR5A1 (SF-1) was used to highlight the definitive zone and fetal zone cells (green). DAPI was used to counterstain nuclei (blue) and to highlight the outer capsule. Scale bars, 100  $\mu\text{m}$ . (d) Immunohistochemistry for FOXO4 in human fetal testis at 11 wpc. NR5A1 (SF-1) was used to highlight Leydig cells (green). DAPI was used to counterstain nuclei (blue). Scale bar, 100  $\mu\text{m}$  (top panels) and 20  $\mu\text{m}$  (bottom panels).



**Figure 13. Identification of potential testis-secreted proteins.** (a) Heatmap representing normalised gene expression values for potential secreted proteins. The intensity of gene expression is indicated by a colour scale: blue for lowest and red for highest expression levels. (b) Immunohistochemistry for AMH (MIS) in human fetal testis at 9 wpc. NR5A1 (SF-1) was used to highlight Leydig cells (green). DAPI was used to counterstain nuclei (blue) and to highlight the outer capsule. Scale bars, 100  $\mu$ m (top panels) and 20  $\mu$ m (bottom panels) (c) Immunohistochemistry for INSL3 in human fetal testis at 9 wpc. NR5A1 (SF-1) was used to highlight Leydig cells (green). DAPI was used to counterstain nuclei (blue). Scale bar, 50  $\mu$ m (d) Immunohistochemistry for SCUBE1 in human fetal testis at 9 wpc. NR5A1 (SF-1) was used to highlight Leydig cells (green). DAPI was used to counterstain nuclei (blue). Scale bars, 100  $\mu$ m (top panels) and 20  $\mu$ m (bottom panels).



**Figure 14. Ovary development dynamics.** (a) Venn diagram displaying the overlap for up-regulated genes between ovary and control versus testis and control samples using  $\text{log}_2\text{FC} \geq 1$  (upper panel) and  $\text{log}_2\text{FC} \geq 2$  (lower panel) cut-offs.  $P$ -values  $\leq 0.05$ . (b) Volcano plot analysis of differentially expressed genes in ovary versus testis samples. Genes with an absolute  $\text{log}_2\text{FC} \geq 1$  and  $P$ -value  $\leq 0.05$  are shown in pink. (c) Volcano plot analysis of differentially expressed genes in the ovary versus control samples (left panel) and testis versus control samples (right panel). Genes with an absolute  $\text{log}_2\text{FC} \geq 1$  and  $P$ -value  $\leq 0.05$  are shown in pink and purple respectively. (d) Heatmap representing normalised gene expression values for the top 20 differentially expressed genes found only in the ovary versus control samples, using a  $\text{log}_2\text{FC} \geq 2$  cut-off. The intensity of gene expression is indicated by a colour scale: blue for lowest and red for highest expression levels.  $P$ -values  $\leq 1 \times 10^{-5}$ . Genes are ordered according to decreasing  $\text{log}_2\text{FC}$  values.



**Figure 15. Pathway enrichment analysis of ovary-specific genes.** (a) Pathway-enrichment analysis using ClueGO for differentially up-regulated genes in the ovary compared to control, with testis up-regulated genes excluded ( $\log_2FC \geq 1$ ,  $P\text{-value} \leq 0.05$ ). (b) Pathway-enrichment analysis using ClueGO for differentially up-regulated genes in the testis compared to control, with ovary up-regulated genes excluded ( $\log_2FC \geq 1$ ,  $P\text{-value} \leq 0.05$ ).



samples were chosen to represent a range of developmental tissues (neuroectoderm, mesoderm, endoderm) across the study period. Approximately 0.5–1% of all genes were differentially expressed in each tissue at  $\log_2FC \geq 2$  (absolute fold change 4) and 3–5% of all genes at  $\log_2FC \geq 1$  (absolute fold change 2). The strong overlap between the adrenal and testis partly reflected shared components of steroidogenesis, whereas the overlap between testis and ovary reflected the shared origins of these tissues as well as the presence of germ cells.

Initial validation of our dataset came from known genes involved in distinct biological processes or monogenic disorders in humans. For example, two of the most strongly expressed transcription factors were the nuclear receptors *NROB1* (DAX-1), which was found in the adrenal and testis, and *NR5A1* (SF-1), which was found in all three tissues. Pathogenic variants in *NROB1* cause X-linked adrenal hypoplasia and impaired spermatogenesis in males (Suntharalingham *et al.*, 2015), whereas pathogenic variants in *NR5A1* are associated with adrenal insufficiency, testicular dysfunction and primary ovarian insufficiency (Achermann *et al.*, 1999; Lourenço *et al.*, 2009; McElreavey & Achermann, 2017; Suntharalingham *et al.*, 2015). These findings, together with the identification and distribution of steroidogenic components and the detection of known gonadal regulators (e.g. *EMX2*, *LHX9*, *TCF21*, *WT1*, *GATA4*) and germ cell pluripotency factors (e.g. *POU5F1*, *NANOG*) provided strong validation for our dataset (Svingen & Koopman, 2013).

Analysis of genes that were differentially expressed in the adrenal gland provided further support for our experimental approach. The six genes most strongly expressed all represent major core components of adrenal steroidogenesis (*CYP17A1*, *CYP11A1*, *SULT2A1*, *STAR*, *MC2R*, *CYP11B1*) (Miller & Auchus, 2011). All have associations with human adrenal disorders except for sulfotransferase 2A1, which is involved in sulphation of dehydroepiandrosterone (DHEA) to dehydroepiandrosterone sulphate (DHEAS), the main steroid synthesised by the fetal adrenal zone. Novel factors identified in the adrenal gland include adrenal-specific factors such as *ASB4* and *NPR3*, and two kinases (*MAP3K15*, *NRK*) that are also expressed in the testis. *FOXO4* and *TBX3* emerged as novel transcription factors that have not previously been implicated in adrenal development. Of note, several genes associated with adrenal insufficiency in humans were not differentially expressed during early development; namely *NNT*, *TXNRD2*, *AAAS*, *MCM4* and *SGPL1*. Most of these factors have ubiquitous expression and may have a pathogenic effect through oxidative stress pathways or through the accumulation of toxic metabolites. These conditions may be precipitated by postnatal stress and affected children very rarely present with adrenal insufficiency in early infancy, unlike other conditions associated with differentially expressed genes where children often present in the neonatal period (e.g. *NROB1*, *NR5A1*, *SAMD9*, *CDKN1C*, *MRAP*, *MC2R*, *STAR*, *CYP11A1*, *HSD3B2*, *CYP17A1*, *POR*, *CYP21A2*, *CYP11B1*) (Guran *et al.*, 2016).

The role of *SRY* as the primary testis-determining gene has been known for 25 years, following transgenic mouse studies as well as the discovery of duplication of *SRY* in individuals with 46,XX testicular disorders of sex development (DSD) or disruption of *SRY* in 46,XY testicular dysgenesis (Bashamboo *et al.*, 2017;

Koopman *et al.*, 2016; Svingen & Koopman, 2013). *SRY* is believed to undergo a transient wave of expression in the developing testis that regulates transcription of downstream factors such as *SOX9* and initiates testis development pathways (Hiramatsu *et al.*, 2009). Although *in situ* hybridization studies of *SRY* in early human testis have been reported, suggesting onset of *SRY* expression at approximately 42 dpc, data regarding *SRY* expression in humans are still very limited (Hanley *et al.*, 2000). *SRY* is already up-regulated at the start of our study (45 dpc) and falls with the onset of steroidogenesis around 56dpc. By comparing early testis samples (CS18–CS22) with 46,XY controls, *SRY* was the only protein coding Y-chromosome gene detected. Although it is widely assumed that *SRY* is the only Y-chromosomal testis-determining factor, this provides the first direct evidence in humans that this is the case.

Other genes up-regulated in the early testis show an overlap with mesonephric development and factors involved in nephrotic syndrome (e.g., *NPFS2*, *WT1*). Of note, the highest differentially expressed gene encodes renin (*REN*), which supports data from previous studies of mouse testis development (Beverdam & Koopman, 2006; Bouma *et al.*, 2007; Inoue *et al.*, 2016; Nef *et al.*, 2005). Renin is a hormone typically secreted from the juxtaglomerular apparatus in the kidney that regulates angiotensin and aldosterone, thereby modulating renal sodium reabsorption and arterial blood pressure. Its role in the testis is unclear, as is its expression in extra-adrenal tissue. Furthermore, it has been proposed that *SRY*-dependent expression of renin-angiotensin system genes, including *REN* itself, is a major factor responsible for differences in blood pressure between men and women (Araujo *et al.*, 2015; Prokop *et al.*, 2012).

It is well-established that *SOX9* is a target of *SRY* in testis determination, and *SOX9* expression rises in the early human testis following expression of *SRY* (Hanley *et al.*, 2000; Ostrer *et al.*, 2007; Sekido & Lovell-Badge, 2008). Although data from mice and humans suggest that *SOX9* is in itself sufficient to trigger downstream testis pathways (Bishop *et al.*, 2000; Kim *et al.*, 2015) it is unclear if other *SRY* targets exist, or what direct targets of *SOX9* might be. Attempts have been made to investigate this using ChIP-Chip in mice, but this approach is challenging given the amount of fetal tissue needed at the correct stage of development (Bhandari *et al.*, 2012; Li *et al.*, 2014).

An alternative approach is to study the pattern of *SOX9* expression across a time-series, and to identify other genes with similar expression profiles. Rather than using a correlative approach, we developed a mathematical model that could be used to capture subtle changes in our dataset more quantitatively. Using this approach, coupled with subsequent review of gene expression in different fetal and adult tissues, we have identified a small group of genes that are up-regulated with *SOX9* in the testis (e.g., *CITED1*, *ZNF280B*, *PRPS2*).

Of these, *CITED1* (encoding Cbp/p300 interacting transactivator with Glu/Asp rich carboxy-terminal domain 1) is of greatest interest, as it is a transcriptional co-regulator, and strongly expressed in the adult testis, epididymis and pituitary gland. *Cited1* knockout mice have growth restriction, late placental insufficiency and abnormalities in nephron patterning and pubertal mammary ductal morphogenesis (Howlin *et al.*, 2006; Novitskaya *et al.*, 2011;

Plisov, 2005; [Rodriguez et al., 2004](#)). Although *Cited1* was identified as a target of Sry in one mouse ChIP-CHIP study ([Li et al., 2014](#)), little is known about *Cited1* in mouse testis. In contrast, the related protein Cited2 influences adrenal and gonad development in the mouse, potentially through the regulation of *Sfl* as well as of Sry itself ([Buaas et al., 2009](#); [Combes et al., 2010](#)). *CITED2* is ubiquitously expressed in humans and does not show differential expression in our datasets, and pathogenic variants in *CITED2* have not been found in patients with adrenal and adrenogonadal disorders, suggesting that CITED1 might be a more important co-regulator in humans ([Ferraz-de-Souza et al., 2009](#)). Amongst the other key genes identified, *ZNF280B* has been proposed to encode a negative regulator of p53 in prostate cancer cells ([Gao et al., 2013](#)), whereas *PRPS2* encodes a testis specific phosphoribosylpyrophosphate synthetase that may function as an anti-apoptotic factor ([Lei et al., 2015](#); [Taira et al., 1990](#)).

The advantage of having multiple serial samples for the testis is that the BALT model could be used to accurately pinpoint the onset of steroidogenesis. Using this approach a distinct sigmoid-shaped upregulation of all the known genes involved in testicular steroidogenesis was seen between 54 and 57 dpc, with marked increases in fold-change. This discrete change in activity allowed us to divide the datasets into “pre-steroidogenic” and “post-steroidogenic” stages.

In order to identify novel components involved in steroidogenesis, genes were identified that were up-regulated in the testis post-steroidogenesis compared to pre-steroidogenesis, and also up-regulated in the adrenal gland compared to control samples. A total of 45 genes were identified, including all known core components of steroidogenesis and many factors involved in cholesterol biosynthesis and oxidative stress.

The 17 “novel” genes identified included *MGARP* (also known as *OSAP*), *DLK1* (*PREF1*), and *MAP3K15* (*ASK3*). *MGARP* has been implicated in mitochondrial trafficking and steroidogenesis ([Jia et al., 2014](#); [Jin et al., 2012](#); [Zhou et al., 2011](#)), but may also be a key target of OCT4 during reprogramming to pluripotency ([Tiemann et al., 2014](#)). *DLK1* is an imprinted gene that is involved in inhibiting adipocyte differentiation, which has previously been shown to be expressed in the outer undifferentiated zone of the male rat adrenal gland and signals to the adrenal capsule to regulate zonation ([Guasti et al., 2013](#)). *MAP3K15* seems to be a novel kinase linked to steroidogenesis, which has very recently been shown to be differentially expressed in the adult adrenal gland ([Bergman et al., 2017](#)). Of note, the *Map3k15/Ask3* knockout mouse is hypertensive and studies have linked this kinase to the response to osmotic stress and blood pressure regulation in the mouse kidney, through interactions with WNK1 or WNK4 ([Maruyama et al., 2016](#); [Naguro et al., 2012](#)). In our dataset, *MAP3K15* was predominantly expressed in steroidogenic tissue, and not in the kidney. Similar findings are seen in RNA expression data for *MAP3K15* in the Human Protein Atlas. Taken together, these findings suggest that adrenal effects of MAP3K15 may be an important area to focus future research on.

Other potential novel components of steroidogenesis with unknown function include *FOXO4*, *GRAMD1B* and *RMDN2* (*FAM82A1*). FOXO transcription factors play important roles in

development, cancer and metabolic homeostasis ([Coomans de Brachène & Demoulin, 2016](#)). FOXO4 has been implicated as a negative regulator of cell proliferation in several tumours, but a link to steroidogenesis has not previously been established ([Li et al., 2016](#)). *GRAMD1B* has been shown to be enriched in mouse fetal Leydig cells following CRHR1 agonist stimulation ([McDowell et al., 2012](#)), and has been identified in other expression studies of mouse fetal Leydig cells ([Inoue et al., 2016](#); [McClelland & Yao, 2017](#)). We have shown by immunohistochemistry that there is clear upregulation of GRAMD1B in the cytoplasm of NR5A1-positive steroidogenic cells with the onset of steroidogenesis in humans. Similar upregulation of expression of RMDN2, a putative microtubule regulator, was also seen in these cells. However, the exact functional role of both GRAMD1B and RMDN2 in steroidogenesis is currently unknown.

In addition to steroidogenesis, the fetal testis has important biological roles through the secretion of proteins or hormones that regulate Müllerian regression (e.g., AMH), endocrine feedback (e.g., inhibin B) and testis descent (e.g. INSL3) ([Valeri et al., 2013](#)). These circulating proteins are also proving to be important biomarkers of testis integrity and function postnatally. Using a strategy to identify genes encoding secreted proteins, all three major factors were identified, namely AMH, inhibin ( $\alpha$ -subunit) and INSL3. Potential novel secreted proteins include EPPIN, which has been extensively studied as a novel approach to male contraception ([O’Rand et al., 2016](#)), and SCUBE1, a secreted cell surface glycoprotein belonging to the EGF superfamily. SCUBE1 was first identified from vascular endothelial cells and is released by activated platelets. Plasma levels of SCUBE1 have been measured as a potential biomarker in several conditions, such as gastric cancer, hypertension, ischaemic heart disease, and stroke ([Özkan et al., 2013](#)). Higher levels of SCUBE1 have been reported in adult males compared to females in some, but not all studies, although few control data exist ([Ulusoy et al., 2012](#)). An acute elevation in SCUBE1 has been demonstrated in experimental models of rat testis torsion, but it is unclear whether testicular SCUBE1 contributes significantly to circulating levels of SCUBE1 in humans ([Turedi et al., 2015](#)).

Although ovary development was originally viewed as a relatively passive process compared to testis development, studies in mice have shown that a similar number of differentially expressed genes are up-regulated in both organs during early development ([Beverdam & Koopman, 2006](#); [Bouma et al., 2007](#); [Nef et al., 2005](#)). Our data show that this is true in human gonad development too, with 274 and 280 genes differentially expressed in the ovary and testis, respectively, at  $\log_2FC > 1$ , and 69 and 57 genes at  $\log_2FC > 2$ . However, pathway-enrichment analysis of the tissue-specific genes revealed virtually no annotated pathways in the ovary, whereas tissue-specific pathways were more abundant in the testis. As expected, amongst the differentially-expressed ovary factors are several key genes involved in germ cell development, e.g. *NANOG*, *POU5F1*, *TFAP2C*, *ZFP42* (*REX1*). In addition, several genes involved in neurotransmission were higher in the developing ovary but were attenuated in the developing testis (*OR10G9*, *GABRG1*, *OR4D5*, *NPNT*, *CNTNAP4* and *NPY*). These include two olfactory receptors of unknown function, a GABA receptor isoform subunit, neuropeptide Y and contactin associated protein like 4 (CNTNAP4), which has recently been implicated

in GABAergic synaptic transmission (Karayannis *et al.*, 2014). Clearly, our understanding of very early human ovary development is still limited.

Although we feel this is an important study in human development, there are several limitations. Firstly, whole tissue samples were used for RNA extraction and RNA analysis. Using this approach transcriptomic signals from small populations of cells might be relatively attenuated. For example, the interstitial/Leydig cell population in the testis is only a relatively small population of the total number of cells. We have addressed this by studying relative changes in gene expression over time, which is independent of the total signal strength, and confirming key findings by immunohistochemistry, although the proportion of cell populations may also change with time. Future studies of single cell transcriptomics will be able to address this in more detail. Secondly, these studies use microarray analysis rather than RNA-Seq. Microarray analyses are restricted by the specificity and number of probes and the arrays used in this study did not address differently spliced isoforms. Future studies using RNA-Seq might address both these points.

## Conclusion

We have developed an important dataset describing the genomic landscape across three different tissues and spanning critical stages in human embryonic and fetal development. We have identified several important elements previously determined from studies in mice (e.g. Renin in testis), but also several novel aspects that may be specific to humans (e.g. CITED1 rather than CITED2 in early testis). By studying time-series changes and differential expression patterns, we have discovered novel components of these important biological processes and interesting new pathways for further investigation. The dataset is highly validated based on known human disorders of adrenal and gonad function and will provide important insight to assign likely biological significance to new genes identified in whole exome and whole genome studies of patients with undiagnosed conditions. Finally, from the limited number of examples discussed above, novel insights from our genomic atlas could fuel many aspects of translational research, including biological sex-differences in humans, vulnerability to early life insults and programming, blood pressure regulation and stem cell/germ cell development.

## Data availability

Array data are available from the [ArrayExpress database](#) under the accession number E-MTAB-5525.

Datasets are available from Open Science Framework (OSF), with the DOI [10.17605/OSF.IO/WV5DA](https://doi.org/10.17605/OSF.IO/WV5DA). (Achermann, 2017).

**Dataset 1. Complete dataset of normalised log<sub>2</sub> gene expression levels of all 53 samples included in the study.**

**Dataset 2. Differentially expressed genes in the adrenal gland compared to controls.**

**Dataset 3. Differentially expressed genes in the testis compared to controls.**

**Dataset 4. Differentially expressed genes in the ovary compared to controls.**

**Dataset 5. Differentially expressed genes in the early testis compared to controls.**

**Dataset 6. Differentially expressed genes in the late testis compared to early testis.**

**Dataset 7. Differentially expressed genes in the testis compared to ovary.**

## Consent

Human embryonic and fetal tissue samples used in this study were obtained in collaboration with the MRC/Wellcome Trust-funded Human Developmental Biology Resource (HDBR). The HDBR is a tissue bank regulated by the Human Tissue Authority. Samples were collected with appropriate maternal written consent and with approval from the NRES Committee London-Fulham (REC reference 08/H0712/34+5).

## Author contributions

IdV and FB were involved in bioinformatic analysis, study design and manuscript preparation. AJD and RP undertook immunohistochemistry and protein characterisation. LL undertook sample preparation, RNA extraction and RTPCR. MB and SS were involved in data modelling and bioinformatic analysis. MH facilitated microarray studies and study design. DG was involved in sample coordination, dissection and staging, and study design. JCA was involved in study design, interpreting clinical and biological aspects of the work, data analysis and manuscript preparation. All authors were involved in the revision of the draft manuscript and have agreed to the final content.

## Competing interests

No competing interests were disclosed.

## Grant information

JCA is a Wellcome Trust Senior Research Fellow in Clinical Science [grant no. 098513/Z/12/Z], with support from the National Institute for Health Research Biomedical Research Centre at Great Ormond Street Hospital for Children NHS Foundation Trust, and University College London. The human embryonic and fetal material was provided by the Joint MRC/Wellcome Trust [grant no. 099175/Z/12/Z] [Human Developmental Biology Resource](#).

*The funders had no role in study design, data collection and analysis, decision to publish, or preparation of the manuscript.*

## Acknowledgments

We are grateful to Nipurna Jina and Kerra Pearce (UCL Genomics, UCL Great Ormond Street Institute of Child Health), Jacky Pallas (Bloomsbury Centre for Bioinformatics, UCL), and past and present members of the Human Developmental Biology Resource for helpful discussions and technical support. Imaging and analysis was performed at the UCL Great Ormond Street Institute of Child Health Cell Imaging Facility.

**Supplementary material****Supplementary Figure 1. Upregulation of novel testis genes over time.**[Click here to access the data.](#)**Supplementary Figure 2. Upregulation of potentially novel steroidogenic genes in human testis over time.**[Click here to access the data.](#)**Supplementary Figure 3. Expression of novel human steroidogenic genes in the adrenal gland.**[Click here to access the data.](#)**Supplementary Table 1. Overview of all 53 tissue samples included in the study.**[Click here to access the data.](#)**Supplementary Table 2. Genes that are up-regulated during early testis development with a similar pattern to SOX9, ranked by amplitude of change from basal expression.**[Click here to access the data.](#)**Supplementary Table 3. Genes that are up-regulated around the onset of testicular steroidogenesis.**[Click here to access the data.](#)**References**

- Achermann JC: **A genomic atlas of human adrenal and gonad development.** *OSF*. 2017.  
[Data Source](#)
- Achermann JC, Ito M, Ito M, *et al.*: **A mutation in the gene encoding steroidogenic factor-1 causes XY sex reversal and adrenal failure in humans.** *Nat Genet.* 1999; **22**(2): 125–126.  
[PubMed Abstract](#) | [Publisher Full Text](#)
- Araujo FC, Milsted A, Watanabe IK, *et al.*: **Similarities and differences of X and Y chromosome homologous genes, SRY and SOX3, in regulating the renin-angiotensin system promoters.** *Physiol Genomics.* 2015; **47**(5): 177–186.  
[PubMed Abstract](#) | [Publisher Full Text](#) | [Free Full Text](#)
- Bashamboo A, Eozenou C, Rojo S, *et al.*: **Anomalies in human sex determination provide unique insights into the complex genetic interactions of early gonad development.** *Clin Genet.* 2017; **91**(2): 143–156.  
[PubMed Abstract](#) | [Publisher Full Text](#)
- Benjamini Y, Hochberg Y: **Controlling the false discovery rate: a practical and powerful approach to multiple testing.** *J R Stat Soc B.* 1995; **57**(1): 289–300.  
[Reference Source](#)
- Bergman J, Botling J, Fagerberg L, *et al.*: **The Human Adrenal Gland Proteome Defined by Transcriptomics and Antibody-Based Profiling.** *Endocrinology.* 2017; **158**(2): 239–251.  
[PubMed Abstract](#) | [Publisher Full Text](#)
- Beverdam A, Koopman P: **Expression profiling of purified mouse gonadal somatic cells during the critical time window of sex determination reveals novel candidate genes for human sexual dysgenesis syndromes.** *Hum Mol Genet.* 2006; **15**(3): 417–431.  
[PubMed Abstract](#) | [Publisher Full Text](#)
- Bhandari RK, Haque MM, Skinner MK: **Global genome analysis of the downstream binding targets of testis determining factor SRY and SOX9.** *PLoS One.* 2012; **7**(9): e43380.  
[PubMed Abstract](#) | [Publisher Full Text](#) | [Free Full Text](#)
- Bindea G, Mlecnik B, Hackl H, *et al.*: **ClueGO: a Cytoscape plug-in to decipher functionally grouped gene ontology and pathway annotation networks.** *Bioinformatics.* 2009; **25**(8): 1091–1093.  
[PubMed Abstract](#) | [Publisher Full Text](#) | [Free Full Text](#)
- Bishop CE, Whitworth DJ, Qin Y, *et al.*: **A transgenic insertion upstream of sox9 is associated with dominant XX sex reversal in the mouse.** *Nat Genet.* 2000; **26**(4): 490–494.  
[PubMed Abstract](#) | [Publisher Full Text](#)
- Bouma GJ, Affourtit JP, Bult CJ, *et al.*: **Transcriptional profile of mouse pre-granulosa and Sertoli cells isolated from early-differentiated fetal gonads.** *Gene Expr Patterns.* 2007; **7**(1–2): 113–123.  
[PubMed Abstract](#) | [Publisher Full Text](#)
- Buaas FW, Val P, Swain A: **The transcription co-factor CITED2 functions during sex determination and early gonad development.** *Hum Mol Genet.* 2009; **18**(16): 2989–3001.  
[PubMed Abstract](#) | [Publisher Full Text](#)
- Carvalho BS, Irizarry RA: **A framework for oligonucleotide microarray preprocessing.** *Bioinformatics.* 2010; **26**(19): 2363–2367.  
[PubMed Abstract](#) | [Publisher Full Text](#) | [Free Full Text](#)
- Combes AN, Spiller CM, Harley VR, *et al.*: **Gonadal defects in Cited2-mutant mice indicate a role for SF1 in both testis and ovary differentiation.** *Int J Dev Biol.* 2010; **54**(4): 683–689.  
[PubMed Abstract](#) | [Publisher Full Text](#)
- Coomans de Brachène A, Demoulin JB: **FOXO transcription factors in cancer development and therapy.** *Cell Mol Life Sci.* 2016; **73**(6): 1159–1172.  
[PubMed Abstract](#) | [Publisher Full Text](#)
- Ferraz-de-Souza B, Martin F, Mallet D, *et al.*: **CBP/p300-interacting transactivator, with Glu/Asp-rich C-terminal domain, 2, and pre-B-cell leukemia transcription factor 1 in human adrenal development and disease.** *J Clin Endocrinol Metab.* 2009; **94**(2): 678–683.  
[PubMed Abstract](#) | [Publisher Full Text](#) | [Free Full Text](#)
- Fowler PA, Flannigan S, Mathers A, *et al.*: **Gene expression analysis of human fetal ovarian primordial follicle formation.** *J Clin Endocrinol Metab.* 2009; **94**(4): 1427–1435.  
[PubMed Abstract](#) | [Publisher Full Text](#)
- Gao S, Hsieh CL, Zhou J, *et al.*: **Zinc Finger 280B regulates sGCa1 and p53 in prostate cancer cells.** *PLoS One.* 2013; **8**(11): e78766.  
[PubMed Abstract](#) | [Publisher Full Text](#) | [Free Full Text](#)
- Gerrard DT, Berry AA, Jennings RE, *et al.*: **An integrative transcriptomic atlas of organogenesis in human embryos.** *eLife.* 2016; **5**: pii-e15657.  
[PubMed Abstract](#) | [Publisher Full Text](#) | [Free Full Text](#)
- Goto M, Piper Hanley K, Marcos J, *et al.*: **In humans, early cortisol biosynthesis provides a mechanism to safeguard female sexual development.** *J Clin Invest.* 2006; **116**(4): 953–960.  
[PubMed Abstract](#) | [Publisher Full Text](#) | [Free Full Text](#)
- Guasti L, Cavlan D, Cogger K, *et al.*: **Dik1 up-regulates Gli1 expression in male rat adrenal capsule cells through the activation of  $\beta$ 1 integrin and ERK1/2.** *Endocrinology.* 2013; **154**(12): 4675–4684.  
[PubMed Abstract](#) | [Publisher Full Text](#)
- Guran T, Buonocore F, Saka N, *et al.*: **Rare Causes of Primary Adrenal Insufficiency: Genetic and Clinical Characterization of a Large Nationwide Cohort.** *J Clin Endocrinol Metab.* 2016; **101**(1): 284–292.  
[PubMed Abstract](#) | [Publisher Full Text](#) | [Free Full Text](#)
- Hanley NA, Hagan DM, Clement-Jones M, *et al.*: **SRY, SOX9, and DAX1 expression**

- patterns during human sex determination and gonadal development. *Mech Dev*. 2000; **91**(1–2): 403–407.  
[PubMed Abstract](#) | [Publisher Full Text](#)
- Hern WM: Correlation of fetal age and measurements between 10 and 26 weeks of gestation. *Obstet Gynecol*. 1984; **63**(1): 26–32.  
[PubMed Abstract](#)
- Hiramatsu R, Matoba S, Kanai-Azuma M, et al.: A critical time window of Sry action in gonadal sex determination in mice. *Development*. 2009; **136**(6): 129–138.  
[PubMed Abstract](#) | [Publisher Full Text](#)
- Houmard B, Small C, Yang L, et al.: Global gene expression in the human fetal testis and ovary. *Biol Reprod*. 2009; **81**(2): 438–443.  
[PubMed Abstract](#) | [Publisher Full Text](#) | [Free Full Text](#)
- Howlin J, McBryan J, Napoletano S, et al.: CITED1 homozygous null mice display aberrant pubertal mammary ductal morphogenesis. *Oncogene*. 2006; **25**(10): 1532–1542.  
[PubMed Abstract](#) | [Publisher Full Text](#)
- Inoue M, Shima Y, Miyabayashi K, et al.: Isolation and Characterization of Fetal Leydig Progenitor Cells of Male Mice. *Endocrinology*. 2016; **157**(3): 1222–1233.  
[PubMed Abstract](#) | [Publisher Full Text](#)
- Ishimoto H, Jaffe RB: Development and function of the human fetal adrenal cortex: a key component in the fetoplacental unit. *Endocr Rev*. 2011; **32**(3): 317–355.  
[PubMed Abstract](#) | [Publisher Full Text](#) | [Free Full Text](#)
- Jameson SA, Natarajan A, Cool J, et al.: Temporal transcriptional profiling of somatic and germ cells reveals biased lineage priming of sexual fate in the fetal mouse gonad. *PLoS Genet*. 2012; **8**(3): e1002575.  
[PubMed Abstract](#) | [Publisher Full Text](#) | [Free Full Text](#)
- Jia L, Liang T, Yu X, et al.: MGARP regulates mouse neocortical development via mitochondrial positioning. *Mol Neurobiol*. 2014; **49**(3): 1293–1308.  
[PubMed Abstract](#) | [Publisher Full Text](#)
- Jin D, Li R, Mao D, et al.: Mitochondria-localized glutamic acid-rich protein (MGARP) gene transcription is regulated by Sp1. *PLoS One*. 2012; **7**(11): e50053.  
[PubMed Abstract](#) | [Publisher Full Text](#) | [Free Full Text](#)
- Karayannis T, Au E, Patel JC, et al.: Cntnap4 differentially contributes to GABAergic and dopaminergic synaptic transmission. *Nature*. 2014; **511**(7508): 236–240.  
[PubMed Abstract](#) | [Publisher Full Text](#) | [Free Full Text](#)
- Kim GJ, Sock E, Buchberger A, et al.: Copy number variation of two separate regulatory regions upstream of SOX9 causes isolated 46,XY or 46,XX disorder of sex development. *J Med Genet*. 2015; **52**(4): 240–247.  
[PubMed Abstract](#) | [Publisher Full Text](#)
- Koopman P, Sinclair A, Lovell-Badge R: Of sex and determination: marking 25 years of Randy, the sex-reversed mouse. *Development*. 2016; **143**(10): 1633–1637.  
[PubMed Abstract](#) | [Publisher Full Text](#)
- Leek JT, Johnson WE, Parker HS, et al.: The SVA package for removing batch effects and other unwanted variation in high-throughput experiments. *Bioinformatics*. 2012; **28**(6): 882–883.  
[PubMed Abstract](#) | [Publisher Full Text](#) | [Free Full Text](#)
- Lei B, Wan B, Peng J, et al.: PRPS2 Expression Correlates with Sertoli-Cell only Syndrome and Inhibits the Apoptosis of TM4 Sertoli Cells. *J Urol*. 2015; **194**(5): 1491–1497.  
[PubMed Abstract](#) | [Publisher Full Text](#)
- Li J, Jiang Z, Han F, et al.: FOXO4 and FOXD3 are predictive of prognosis in gastric carcinoma patients. *Oncotarget*. 2016; **7**(18): 25585–25592.  
[PubMed Abstract](#) | [Publisher Full Text](#) | [Free Full Text](#)
- Li Y, Zheng M, Lau YF: The sex-determining factors SRY and SOX9 regulate similar target genes and promote testis cord formation during testicular differentiation. *Cell Rep*. 2014; **8**(3): 723–733.  
[PubMed Abstract](#) | [Publisher Full Text](#)
- Lourenço D, Brauner R, Lin L, et al.: Mutations in NR5A1 associated with ovarian insufficiency. *N Engl J Med*. 2009; **360**(12): 1200–1210.  
[PubMed Abstract](#) | [Publisher Full Text](#) | [Free Full Text](#)
- Maruyama J, Kobayashi Y, Umeda T, et al.: Osmotic stress induces the phosphorylation of WNK4 Ser575 via the p38MAPK-MK pathway. *Sci Rep*. 2016; **6**: 18710.  
[PubMed Abstract](#) | [Publisher Full Text](#) | [Free Full Text](#)
- McClelland KS, Bell K, Lamey C, et al.: Purification and Transcriptomic Analysis of Mouse Fetal Leydig Cells Reveals Candidate Genes for Specification of Gonadal Steroidogenic Cells. *Biol Reprod*. 2015; **92**(6): 145, 1–17.  
[PubMed Abstract](#) | [Publisher Full Text](#)
- McClelland KS, Yao HH: Leveraging Online Resources to Prioritize Candidate Genes for Functional Analyses: Using the Fetal Testis as a Test Case. *Sex Dev*. 2017; **11**(1): 1–20.  
[PubMed Abstract](#) | [Publisher Full Text](#)
- McDowell EN, Kisielewski AE, Pike JW, et al.: A transcriptome-wide screen for mRNAs enriched in fetal Leydig cells: CRRH1 agonism stimulates rat and mouse fetal testis steroidogenesis. *PLoS One*. 2012; **7**(10): e47359.  
[PubMed Abstract](#) | [Publisher Full Text](#) | [Free Full Text](#)
- McElreavey K, Achermann JC: Steroidogenic Factor-1 (SF-1, NR5A1) and 46,XX Ovotesticular Disorders of Sex Development: One Factor, Many Phenotypes. *Horm Res Paediatr*. 2017; **8**(3): 189–190.  
[PubMed Abstract](#) | [Publisher Full Text](#)
- Miller WL, Auchus RJ: The molecular biology, biochemistry, and physiology of human steroidogenesis and its disorders. *Endocr Rev*. 2011; **32**(1): 81–151.  
[PubMed Abstract](#) | [Publisher Full Text](#) | [Free Full Text](#)
- Naguro I, Umeda T, Kobayashi Y, et al.: ASK3 responds to osmotic stress and regulates blood pressure by suppressing WNK1-SPAK/OSR1 signaling in the kidney. *Nat Commun*. 2012; **3**: 1285.  
[PubMed Abstract](#) | [Publisher Full Text](#)
- Nef S, Schaad O, Stallings NR, et al.: Gene expression during sex determination reveals a robust female genetic program at the onset of ovarian development. *Dev Biol*. 2005; **287**(2): 361–377.  
[PubMed Abstract](#) | [Publisher Full Text](#)
- Novitskaya T, Baserga M, de Caestecker MP: Organ-specific defects in insulin-like growth factor and insulin receptor signaling in late gestational asymmetric intrauterine growth restriction in Cited1 mutant mice. *Endocrinology*. 2011; **152**(6): 2503–2516.  
[PubMed Abstract](#) | [Publisher Full Text](#) | [Free Full Text](#)
- O'Rahilly R, Müller F: Developmental stages in human embryos. Washington. ISBN 0-87279-666-3. 1987; **637**: 306.  
**Reference Source**
- O'Rand MG, Silva EJ, Hamil KG: Non-hormonal male contraception: A review and development of an Eppin based contraceptive. *Pharmacol Ther*. 2016; **157**: 105–111.  
[PubMed Abstract](#) | [Publisher Full Text](#) | [Free Full Text](#)
- O'Shaughnessy PJ, Baker PJ, Monteiro A, et al.: Developmental changes in human fetal testicular cell numbers and messenger ribonucleic acid levels during the second trimester. *J Clin Endocrinol Metab*. 2007; **92**(12): 4792–4801.  
[PubMed Abstract](#) | [Publisher Full Text](#)
- Ostner H, Huang HY, Masch RJ, et al.: A cellular study of human testis development. *Sex Dev*. 2007; **1**(5): 286–292.  
[PubMed Abstract](#) | [Publisher Full Text](#)
- Özkan G, Ulusoy S, Menteşe A, et al.: New marker of platelet activation, SCUBE1, is elevated in hypertensive patients. *Am J Hypertens*. 2013; **26**(6): 748–753.  
[PubMed Abstract](#) | [Publisher Full Text](#)
- Plisov S, Tsang M, Shi G, et al.: Cited1 is a bifunctional transcriptional cofactor that regulates early nephron patterning. *J Am Soc Nephrol*. 2005; **16**(6): 1632–1644.  
[PubMed Abstract](#) | [Publisher Full Text](#)
- Prokop JW, Watanabe IK, Turner ME, et al.: From rat to human: regulation of Renin-Angiotensin system genes by sry. *Int J Hypertens*. 2012; **2012**: 724240.  
[PubMed Abstract](#) | [Publisher Full Text](#) | [Free Full Text](#)
- Rodriguez TA, Sparrow DB, Scott AN, et al.: Cited1 is required in trophoblasts for placental development and for embryo growth and survival. *Mol Cell Biol*. 2004; **24**(1): 228–244.  
[PubMed Abstract](#) | [Publisher Full Text](#) | [Free Full Text](#)
- Sekido R, Lovell-Badge R: Sex determination involves synergistic action of SRY and SF1 on a specific Sox9 enhancer. *Nature*. 2008; **453**(7197): 930–934.  
[PubMed Abstract](#) | [Publisher Full Text](#)
- Smyth GK: Linear models and empirical bayes methods for assessing differential expression in microarray experiments. *Stat Appl Genet Mol Biol*. 2004; **3**: 1–26, Article3.  
[PubMed Abstract](#) | [Publisher Full Text](#)
- Suntharalingham JP, Buonocore F, Duncan AJ, et al.: DAX-1 (NR0B1) and steroidogenic factor-1 (SF-1, NR5A1) in human disease. *Best Pract Res Clin Endocrinol Metab*. 2015; **29**(4): 607–619.  
[PubMed Abstract](#) | [Publisher Full Text](#) | [Free Full Text](#)
- Svingen T, Koopman P: Building the mammalian testis: Origins, differentiation, and assembly of the component cell populations. *Genes Dev*. 2013; **27**(22): 2409–2426.  
[PubMed Abstract](#) | [Publisher Full Text](#) | [Free Full Text](#)
- Taira M, Iizasa T, Shimada H, et al.: A human testis-specific mRNA for phosphoribosylpyrophosphate synthetase that initiates from a non-AUG codon. *J Biol Chem*. 1990; **265**(27): 16491–16497.  
[PubMed Abstract](#)
- Tiemann U, Marthaler AG, Adachi K, et al.: Counteracting activities of OCT4 and KLF4 during reprogramming to pluripotency. *Stem Cell Reports*. 2014; **2**(3): 351–365.  
[PubMed Abstract](#) | [Publisher Full Text](#) | [Free Full Text](#)
- Turedi S, Tatli O, Alver A, et al.: The Diagnostic Value of Plasma SCUBE1, a Novel Biomarker of Platelet Activation, in Testicular Torsion: A Randomized, Controlled, Experimental Study. *Urology*. 2015; **86**(3): 516–520.  
[PubMed Abstract](#) | [Publisher Full Text](#)
- Ulusoy S, Ozkan G, Menteşe A, et al.: Signal peptide-CUB-EGF domain-containing protein 1 (SCUBE1) level in hemodialysis patients and parameters affecting that level. *Clin Biochem*. 2012; **45**(16–17): 1444–1449.  
[PubMed Abstract](#) | [Publisher Full Text](#)
- Valeri C, Scheingart HF, Rey RA: The prepubertal testis: biomarkers and functions. *Curr Opin Endocrinol Diabetes Obes*. 2013; **20**(3): 224–233.  
[PubMed Abstract](#) | [Publisher Full Text](#)
- Xing Y, Lerario AM, Rainey W, et al.: Development of Adrenal Cortex Zonation. *Endocrinol Metab Clin North Am*. 2015; **44**(2): 243–274.  
[PubMed Abstract](#) | [Publisher Full Text](#) | [Free Full Text](#)
- Zhou M, Wang Y, Qi S, et al.: The expression of a mitochondria-localized glutamic acid-rich protein (MGARP/OSAP) is under the regulation of the HPG axis. *Endocrinology*. 2011; **152**(6): 2311–2320.  
[PubMed Abstract](#) | [Publisher Full Text](#)

# Open Peer Review




Current Referee Status:    

---

## Version 2

Referee Report 08 November 2017

doi:[10.21956/wellcomeopenres.14044.r27229](https://doi.org/10.21956/wellcomeopenres.14044.r27229)

 **Rodolfo A. Rey** <sup>1,2</sup>, **Romina P. Grinspon** <sup>1</sup>

<sup>1</sup> Centro de Investigaciones Endocrinológicas “Dr. César Bergadá” (CEDIE) CONICET – FEI – División de Endocrinología, Hospital de Niños R. Gutiérrez, Buenos Aires, Argentina

<sup>2</sup> Departamento de Biología Celular, Histología, Embriología y Genética, Facultad de Medicina, Universidad de Buenos Aires, Buenos Aires, Argentina

The authors have addressed all the comments satisfactorily.

**Competing Interests:** No competing interests were disclosed.

**We have read this submission. We believe that we have an appropriate level of expertise to confirm that it is of an acceptable scientific standard.**

Referee Report 26 October 2017

doi:[10.21956/wellcomeopenres.14044.r27230](https://doi.org/10.21956/wellcomeopenres.14044.r27230)

 **Andrew H. Sinclair** , **Katie Ayers**

Murdoch Children's Research Institute, Melbourne, VIC, Australia

We are happy to approve publication of the revised version of this manuscript.

**Competing Interests:** No competing interests were disclosed.

**We have read this submission. We believe that we have an appropriate level of expertise to confirm that it is of an acceptable scientific standard.**

---

## Version 1

Referee Report 02 May 2017

doi:[10.21956/wellcomeopenres.12140.r22401](https://doi.org/10.21956/wellcomeopenres.12140.r22401)



Jorma Toppari <sup>1</sup>, Juho-Antti Mäkelä <sup>2</sup>

<sup>1</sup> Department of Pediatrics, University of Turku, Turku, Finland

<sup>2</sup> Department of Physiology, University of Turku, Turku, Finland

Research manuscript entitled “*A genomic atlas of human adrenal and gonad development*” by del Valle *et al.* is an ambitious research effort and it addresses many puzzling questions concerning embryonic and early fetal gonad and adrenal gland development in human. The authors need to be thanked for taking up such a challenge and congratulated for being able to create a nicely flowing and very well written article from an enormous amount of data. The article is indeed a pleasure to read and the microarray data is presented in a clear and easily digestible manner. The article makes a substantial contribution to our canon of knowledge concerning early events in embryonic and fetal testicular, ovarian, and adrenal gland development. While it is able to corroborate earlier findings by others, it also provides an extensive amount of new data and sheds light on species-dependent differences in organogenesis. Despite these achievements, there are concerns that should be addressed in order to improve the quality of the data and make the presented arguments more scientifically sound.

There are two major concerns that should be addressed to a satisfactory extent. Firstly, the main concern of the manuscript is data validation. Novel findings based on microarray data should always be confirmed using another method, such as qPCR and/or immunohistochemical staining (as the authors have done for the adrenal data: Fig4 and Fig 5). At many points in the manuscript (p8, p11, p25, p27) the authors propose that co-enrichment with known markers associated with distinct biological processes or monogenic disorders validates the data. This is, however, at best merely correlative data and provides only weak validation. It would greatly improve the quality of the research if the authors would validate the data at least for the most important candidate genes using qPCR and/or immunohistochemistry. The authors have included a good selection of immunohistochemical stainings but they are partially a cause for concern in their own right (see below) plus fail to provide sufficient validation for the data. The latter statement might sound harsh but in order to validate microarray data the authors need to provide at least two stainings: one that shows low/no expression at a specific time point (say CITED1 in the early testis) and high expression in another time point (CITED1 in late testis). Including this kind of data would be sufficient to address this concern and would provide the minimum acceptable validation for the microarray findings. Strictly speaking IHC does not validate microarray data as it visualizes proteins, not RNA, but at the end it is the protein expression that we are interested in and in most cases microarray/RNAseq/qPCR are just tools to identify the differentially expressed mRNAs that are translated into proteins.

The second major concern is the quality of immunohistochemical stainings. Particularly lack of negative control stainings and difficulty to interpret the data due to inappropriate magnification and/or absence of high magnification insets. Please include negative control stainings at least for the novel markers. Provide high magnification inset for the following figures: Fig.4c top and middle panel, Fig.12c and Fig.12d. Due to poor quality, please consider providing an alternative image of higher magnification or after cropping (+inset) for Fig.12d and Fig.13d top panel.

Minor points:

1. P8, left column, row 12 from top. For Figure 2c  $FC \geq 2$  was used, whereas for 2d  $FC \geq 1$ . Therefore it is a bit misleading to use term “...similar analysis...” in this case.
2. P8, right column, row 1 from top: check spelling.

3. Figure 5b. The number of samples included in the qPCR analysis is not mentioned and error bars are not shown. The authors might also consider redrawing the scale for Y axis.
4. Related to referee question #5: Is the data presented in Figure 14b and 14c available somewhere to have a look at the differentially expressed genes (cf. Figure 4b/Table 1)?
5. P26, left column, rows 5-7 from the bottom. The provided data only indicates that GRAMD1B and RMDN2 are expressed in 9 wpc testis. Because only one time point was included in the analysis, it does not demonstrate upregulation of these genes/enhanced expression of the protein products, as stated in the text.

**Is the work clearly and accurately presented and does it cite the current literature?**

Yes

**Is the study design appropriate and is the work technically sound?**

Partly

**Are sufficient details of methods and analysis provided to allow replication by others?**

Yes

**If applicable, is the statistical analysis and its interpretation appropriate?**

I cannot comment. A qualified statistician is required.

**Are all the source data underlying the results available to ensure full reproducibility?**

Partly

**Are the conclusions drawn adequately supported by the results?**

Partly

**Competing Interests:** No competing interests were disclosed.

**Referee Expertise:** JT: developmental endocrinology, spermatogenesis; J-AM: stem cells, spermatogenesis

**We have read this submission. We believe that we have an appropriate level of expertise to confirm that it is of an acceptable scientific standard.**

Author Response 17 Oct 2017

**John Achermann**, UCL GOS Institute of Child Health, UK

**We thank the reviewers for their constructive comments. We have addressed these as shown in bold below and modified the revised manuscript accordingly.**

There are two major concerns that should be addressed to a satisfactory extent. Firstly, the main concern of the manuscript is data validation. Novel findings based on microarray data should always be confirmed using another method, such as qPCR and/or immunohistochemical staining (as the authors have done for the adrenal data: Fig4 and Fig 5). At many points in the manuscript (p8, p11, p25, p27) the authors propose that co-enrichment with known markers associated with distinct biological processes or monogenic disorders validates the data. This is, however, at best



merely correlative data and provides only weak validation. It would greatly improve the quality of the research if the authors would validate the data at least for the most important candidate genes using qPCR and/or immunohistochemistry. The authors have included a good selection of immunohistochemical stainings but they are partially a cause for concern in their own right (see below) plus fail to provide sufficient validation for the data. The latter statement might sound harsh but in order to validate microarray data the authors need to provide at least two stainings: one that shows low/no expression at a specific time point (say CITED1 in the early testis) and high expression in another time point (CITED1 in late testis). Including this kind of data would be sufficient to address this concern and would provide the minimum acceptable validation for the microarray findings. Strictly speaking IHC does not validate microarray data as it visualizes proteins, not RNA, but at the end it is the protein expression that we are interested in and in most cases microarray/RNAseq/qPCR are just tools to identify the differentially expressed mRNAs that are translated into proteins.

**We agreed that further validation would be ideal at both the RNA level (qRT-PCR) and protein level (immunohistochemistry), but we tried to focus on the key new genes described and were limited by the specificity of antibodies for IHC for some genes/protein of interest. We did focus largely on IHC data as we felt this provided validation at the protein level as well as RNA, but agree we could have included more validation across the time series (some of which we omitted because of space).**

To address these issues, we have:

- 1) Provided qRT-PCR data for validation of key upregulated testis genes (CITED1, ZNF280B, PRPS2, ANKRD18A) in the testis versus control samples. We also show changes in expression level across three time points (CS18, CS23, 10 wpc). These data are now shown as Supplementary Figure 1 and details have been added to the methods.**
- 2) Provided qRT-PCR data for upregulation of key novel steroidogenic components (GRAMD1B, FOXO4, MAP3K15, RMDN2) across time points before and after the onset of steroidogenesis (CS21, 8.5 wpc). These data are now shown as Supplementary Figure 2a and details have been added to the methods.**
- 3) Unfortunately we do not have IHC data for CITED1 across time, but we have shown clear sequential upregulation by qRT-PCR as described above (Supplementary Figure 1). Furthermore, we have analysed available data from single-cell transcriptomics in human gonad development recently published by Li *et al.* (Single-Cell RNA-Seq Analysis Maps Development of Human Germline Cells and Gonadal Niche Interactions. Li L, Dong J, Yan L, Yong J, Liu X, Hu Y, Fan X, Wu X, Guo H, Wang X, Zhu X, Li R, Yan J, Wei Y, Zhao Y, Wang W, Ren Y, Yuan P, Yan Z, Hu B, Guo F, Wen L, Tang F, Qiao J. *Cell Stem Cell*. 2017 Jun 1;20(6):858-873.e4. doi: 10.1016/j.stem.2017.03.007). We analysed all cells from 46,XY embryos/foetuses between 4 and 19 weeks gestation that cover the time course of interest (1207 single cells). Using a cut-off of >0.5 TPM to indicate expressed genes, we found that 221/1014 [21%] of SOX9 negative cells co-expressed CITED1, whereas 97/193 [50%] of SOX9 positive cells co-expressed CITED1 (Chi-squared 66.2, df =1, p-value < 4e<sup>-16</sup>). Furthermore, Cited1 was identified within developing Sertoli cells in recently available data from mouse single-cell transcriptomics, with an expression time course shortly after SOX9 (Deciphering cell lineage specification during male sex determination with single-cell RNA sequencing. Stevant I, Neirijnck Y, Borel C, Escoffier J, Smith LB,**

**Antonarakis SE, Dermitzakis ET, Nef S.**

**<http://www.biorxiv.org/content/early/2017/09/18/190264>). We feel that these are additional novel, independent data to show the potential link between SOX9 and CITED1 in testis development.**

**4) We now provide sequential IHC data for GRAMD1B and RMDN2 before and after the onset of steroidogenesis to show an increase in protein expression in the cytoplasm of Leydig cells (Supplementary Figure 2b).**

**Please note that in the original manuscript we have included links to the Human Protein Atlas for many key novel factors. This resource provides IHC data for adult tissues as well as graphical data for qPCR datasets (e.g. FANTOM5, GTEX).**

The second major concern is the quality of immunohistochemical stainings. Particularly lack of negative control stainings and difficulty to interpret the data due to inappropriate magnification and/or absence of high magnification insets. Please include negative control stainings at least for the novel markers. Provide high magnification inset for the following figures: Fig.4c top and middle panel, Fig.12c and Fig.12d. Due to poor quality, please consider providing an alternative image of higher magnification or after cropping (+inset) for Fig.12d and Fig.13d top panel.

**Negative control data are particularly important to assess binding of secondary antibodies and non-specific effects. We include representative negative data in Supplementary Figure 3b. Moreover, all of the IHC images shown include areas of negative staining (e.g. capsule, non-endocrine tissue) which are important internal negative controls for the primary antibody.**

**The main aim of Fig. 4c (upper and middle panels) was to show the distribution of the factors within the adrenal in general, but not in the capsule. Higher power magnification of SF-1/NR5A1 in the adrenal gland is shown in Fig. 12c and in the new Supplementary Figure 3a, but we feel that including it as an inset would be too crowded.**

**We have included a higher power images of Fig. 12c (GRAMD1B, RMND2 in the adrenal gland) in Supplementary Figure 3a. We have added a higher magnification image of FOXO4 staining of nuclei into Figure 12d as an additional panel as requested, which shows co-expression of FOXO4 and NR5A1 in nuclei of Leydig cells. Unfortunately we are unable to provide a better quality image for 13d (upper panel) but a higher power magnification is shown.**

Minor points:

P8, left column, row 12 from top. For Figure 2c  $FC \geq 2$  was used, whereas for 2d  $FC \geq 1$ . Therefore it is a bit misleading to use term "...similar analysis..." in this case.

**We have changed this to "analysis".**

P8, right column, row 1 from top: check spelling.

**We are unclear what this refers to.**

Figure 5b. The number of samples included in the qPCR analysis is not mentioned and error bars are not shown. The authors might also consider redrawing the scale for Y axis.

**We agree that these data should have been presented better. We have repeated the experiment again three times in triplicate and present data with error bars. We have replaced this part of the Figure 5b.**

Related to referee question #5: Is the data presented in Figure 14b and 14c available somewhere to have a look at the differentially expressed genes (cf. Figure 4b/Table 1)?

**We have uploaded this dataset into OSF as Dataset 7. We apologise that this was not included.**

P26, left column, rows 5-7 from the bottom. The provided data only indicates that GRAMD1B and RMDN2 are expressed in 9 wpc testis. Because only one time point was included in the analysis, it does not demonstrate upregulation of these genes/enhanced expression of the protein products, as stated in the text.

**We have now included qRTPCR and IHC to show up-regulation over time in Supplementary Figure 2a, b.**

**Competing Interests:** No competing interests were disclosed.

Referee Report 24 April 2017

doi:[10.21956/wellcomeopenres.12140.r21686](https://doi.org/10.21956/wellcomeopenres.12140.r21686)



**Rodolfo A. Rey** <sup>1,2</sup>, **Romina P. Grinspon** <sup>1</sup>

<sup>1</sup> Centro de Investigaciones Endocrinológicas “Dr. César Bergadá” (CEDIE) CONICET – FEI – División de Endocrinología, Hospital de Niños R. Gutiérrez, Buenos Aires, Argentina

<sup>2</sup> Departamento de Biología Celular, Histología, Embriología y Genética, Facultad de Medicina, Universidad de Buenos Aires, Buenos Aires, Argentina

The comprehension of the mechanisms underlying adrenal and gonadal development in the first trimester of intrauterine life is essential for the understanding of human congenital disorders. Most of the information available on normal embryonic and fetal development of the adrenals and gonads derives from studies in experimental models. This study provides crucial insight into the comprehension of these developmental processes in humans. In fact, by performing microarray studies on tissues obtained from accurately staged embryos and fetuses to assess time-series changes and differential expression patterns, del Valle and colleagues have constructed an atlas of RNA expression in the adrenals, testes and ovaries from 6 to 10 weeks post-conception, a critical period in the differentiation of these organs. The authors validate their findings using quantitative RT-PCR and immunohistochemistry of genes known to be important in adrenal and gonadal development. The expression profiles of known genes were corroborated whereas unknown profiles of genes in the gonads and adrenals have been described. These findings set the bases for a wide variety of future studies addressing the physiology and pathophysiology of human adrenal and gonadal development.

We have minor comments:

**Title and text:** We have concerns about the use of the phrase “genomic atlas” in this study. In fact, genomic atlases, e.g. cancer genome atlas, refer to the comprehensive description of variants of the genome, whereas this work makes a comprehensive description of the transcripts present in the three organs at different developmental stages. The phrases “transcriptomic atlas” or “atlas of gene expression” (as used on page 5) seem more adequate.

**Methods and Results:** Carnegie and fetal stages are based on the morphological development of the embryo, and are not directly dependent on either age or size. This concept should be more clearly expressed (e.g. Supplementary Table 1 and text in Methods) in order to avoid that the non-specialised reader interpret that there are precise cut-offs (e.g. CS18=44-47.5 days, etc.).

**Methods and Results:** Tissue transcriptome analysis by microarray is a powerful technique. Nonetheless, like other techniques based on RNA extraction from whole tissue, one limitation is the confounding effect due to modifications in RNA levels in single components whose relative proportion in the tissue varies or differs. For instance, STAR was 73-fold higher in the adrenal tissue probably because most of the tissue sample was composed of steroidogenic cells, whereas a similar amount of testis sample would only have a few Leydig cells. This does not mean that one cortical adrenal cell expresses more STAR than one Leydig cell. Or, if Sertoli cells represent 80% of testicular tissue on week 6 and 50% on week 10, microarray results from whole testicular tissue will show a lower expression level of a given Sertoli cell RNA even if each Sertoli cell expresses the same amount of the given RNA. This limitation should be considered in the interpretation of the results: up/down-regulation give the idea of regulated increase/decrease of a given RNA expression in one cell rather than increase/decrease of RNA levels in whole tissue, which could be due to the relative proportion of cells expressing that given RNA. Therefore, the words up-regulation and down-regulation may be misleading, and may need to be replaced (e.g. “more/less abundant in whole testicular/ovarian/adrenal tissue”).

**Methods:** We do not have expertise to assess the BALT model used to pinpoint the time when gene expression levels change. A mathematician/statistician should be consulted.

**Results:** We would have expected SRY and SOX9 to appear as a testis differentially expressed genes on Figure 2. Could the authors discuss why they did not select them for this figure?

**Figure 6:** A differential expression of SRY on the adrenal is unexpected. Could the authors comment on this?

**Suppl. Table 1:** there are two samples (Ovary CS21 and Testis CS18.2) with the same abnormal karyotype translocation: 46,XX inv(9)(p11q13) and 46,XY inv(9)(p11q13) respectively. This a frequent finding in infertile patients. Could the authors discuss this finding?

**Discussion:** page 25, “The role of SRY as the primary testis-determining gene has been known for 25 years, following transgenic mouse studies as well as the discovery of duplication of SRY in individuals with 46,XX testicular disorders of sex development (DSD)”. Do the authors mean translocation of SRY, or is it really duplication?

## References

1. del Valle I, Buonocore F, Duncan A, Lin L, Barenco M, Parnaik R, Shah S, Hubank M, Gerrelli D, Achermann J: A genomic atlas of human adrenal and gonad development. *Wellcome Open Research*. 2017; **2**. [Publisher Full Text](#)

**Is the work clearly and accurately presented and does it cite the current literature?**

Yes

**Is the study design appropriate and is the work technically sound?**

Yes

**Are sufficient details of methods and analysis provided to allow replication by others?**

Yes

**If applicable, is the statistical analysis and its interpretation appropriate?**

I cannot comment. A qualified statistician is required.

**Are all the source data underlying the results available to ensure full reproducibility?**

Yes

**Are the conclusions drawn adequately supported by the results?**

Yes

**Competing Interests:** No competing interests were disclosed.

**We have read this submission. We believe that we have an appropriate level of expertise to confirm that it is of an acceptable scientific standard.**

Author Response 17 Oct 2017

**John Achermann**, UCL GOS Institute of Child Health, UK

**We thank the reviewers for their positive and constructive comments. We have addressed these as shown in bold below and modified the revised manuscript accordingly.**

Minor comments:

Title and text: We have concerns about the use of the phrase “genomic atlas” in this study. In fact, genomic atlases, e.g. cancer genome atlas, refer to the comprehensive description of variants of the genome, whereas this work makes a comprehensive description of the transcripts present in the three organs at different developmental stages. The phrases “transcriptomic atlas” or “atlas of gene expression” (as used on page 5) seem more adequate.

**We agree that in the age of genome sequencing there might be confusion and that other terms might be more accurate, but this term has been used to describe developmental datasets before so we would prefer to leave the title as it is.**

Methods and Results: Carnegie and fetal stages are based on the morphological development of the embryo, and are not directly dependent on either age or size. This concept should be more clearly expressed (e.g. Supplementary Table 1 and text in Methods) in order to avoid that the non-specialised reader interpret that there are precise cut-offs (e.g. CS18=44-47.5 days, etc.).

**We have added a note in the methods to state that staging is based on morphological characteristics.**

Methods and Results: Tissue transcriptome analysis by microarray is a powerful technique. Nonetheless, like other techniques based on RNA extraction from whole tissue, one limitation is the confounding effect due to modifications in RNA levels in single components whose relative proportion in the tissue varies or differs. For instance, STAR was 73-fold higher in the adrenal tissue probably because most of the tissue sample was composed of steroidogenic cells, whereas a similar amount of testis sample would only have a few Leydig cells. This does not mean that one cortical adrenal cell expresses more STAR than one Leydig cell. Or, if Sertoli cells represent 80% of testicular tissue on week 6 and 50% on week 10, microarray results from whole testicular tissue will show a lower expression level of a given Sertoli cell RNA even if each Sertoli cell expresses the same amount of the given RNA. This limitation should be considered in the interpretation of the results: up/down-regulation give the idea of regulated increase/decrease of a given RNA expression in one cell rather than increase/decrease of RNA levels in whole tissue, which could be due to the relative proportion of cells expressing that given RNA. Therefore, the words up-regulation and down-regulation may be misleading, and may need to be replaced (e.g. "more/less abundant in whole testicular/ovarian/adrenal tissue").

**We have approached this study on the "whole tissue" level and talk about up-regulation or down-regulation of genes in this regard. However, it is an important point to consider, so we have added a paragraph in the discussion to address some of the limitations of this work and included this point.**

Results: We would have expected SRY and SOX9 to appear as a testis differentially expressed genes on Figure 2. Could the authors discuss why they did not select them for this figure?

**We used a cut-off value of  $\log_2$  FC >1 (i.e., two-fold) for this analysis and both factors were just below. As can be seen in Fig. 6b and 8a even changes within the tissue are subtle.**

Figure 6: A differential expression of SRY on the adrenal is unexpected. Could the authors comment on this?

**SRY may have some extra-gonadal expression, for example in the adrenal and brain. We mentioned the potential role of SRY in the regulation of renin in the discussion. This is an interesting area for future research.**

Suppl. Table 1: there are two samples (Ovary CS21 and Testis CS18.2) with the same abnormal karyotype translocation: 46,XX inv(9)(p11q13) and 46,XY inv(9)(p11q13) respectively. This a frequent finding in infertile patients. Could the authors discuss this finding?

**The inv(9)(p11q13) balanced translocation is quite a common finding in the general population (1.2-2.3%). Although data originally suggested this could be linked to infertility, more recent publications have shown that differences in 1800 infertile people were not statistically significantly higher (Association of pericentric inversion of chromosome 9 and infertility in romanian population. Dana M, Stoian V. *Maedica (Buchar)*. 2012 Jan;7(1):25-9; see also Heteromorphic variants of chromosome 9. Kosyakova *et al*. *Molecular Cytogenetics* 2013;6:14). Several studies are also biased as this change can increase with age and individuals being investigated for fertility were often older. There were no specific outlying effects of these samples in our analysis, so we felt comfortable**

**including them in the dataset.**

Discussion: page 25, "The role of SRY as the primary testis-determining gene has been known for 25 years, following transgenic mouse studies as well as the discovery of duplication of SRY in individuals with 46,XX testicular disorders of sex development (DSD)". Do the authors mean translocation of SRY, or is it really duplication?

**Thank you for identifying this mistake. We have changed it to translocation.**

**Competing Interests:** No competing interests were disclosed.

Referee Report 20 April 2017

doi:[10.21956/wellcomeopenres.12140.r21671](https://doi.org/10.21956/wellcomeopenres.12140.r21671)



**Andrew H. Sinclair** , **Katie Ayers**

Murdoch Children's Research Institute, Melbourne, VIC, Australia

The development of the adrenal glands and gonads represent two significant embryological events. The development of both tissues is closely linked as they both derive from the same region of intermediate mesoderm in early embryogenesis. Given this shared history it is not surprising that they share many processes such as steroidogenesis in common. However, until the current study most of our understanding of spatial and temporal gene expression profiles in these tissues has come from mouse studies which are not always applicable to humans. This study by Achermann and colleagues finally addresses this fundamental gap in our knowledge. The authors extracted RNA from adrenal, testis, ovary and control tissues between 6-10 weeks *post coitum* (wpc) in human embryos. The RNA was then subjected to an Affymetrix array and subsequent differential gene expression analysis and mathematical modelling to identify temporal changes across the dataset. In addition, they used pathway analysis and confirmed the cellular localization of novel genes using immunohistochemistry.

The study confirmed the expression profiles of many known genes such as *NR5A1* and identified many potential novel genes. Interestingly, they showed that the only protein coding Y-chromosome gene detected in the developing human testis (CS18-CS22) was the *SRY* gene. Twenty-five years since the discovery of *SRY* as the sole primary testis determining factor we now have further proof in human tissue that this is the case. Novel components of the adrenal pathway have been identified as have genes that are potentially up-regulated by *SOX9* such as *CITED1*, *ZNF280B* and *PRPS2*. In addition, potential novel genes were associated with adrenal and testicular steroidogenesis (eg. *FOXO4*, *MAP3K15* and *RMND2*). Of interest was the finding that while a similar number of differentially expressed genes were found in the testis and ovary, pathway-enrichment analysis failed to reveal any annotated pathways in the later. The study did reveal some interesting candidate ovarian genes such as *OR10G9* and *OR4D5*, some of which appear to be involved in neurotransmission. This clearly highlights our lack of understanding of early ovarian development, and suggests that additional methods may be required to find novel genetic pathways important in this tissue.

The public availability of this data will be a great future resource for any researchers interested in human adrenal or gonadal development. In addition, this database may allow researchers to isolate novel genes involved in gonadal and adrenal disorders, many of which currently lack a defined genetic aetiology. Finally, while the authors used a highly comprehensive set of tissues, expression analysis using

microarray platforms can have several drawbacks compared to technologies such as RNA-Seq. Microarrays have been shown to have poorer sensitivity for lowly-abundant RNA compared to RNA-Seq and may also miss expression data for poorly annotated genes and alternative transcripts. We therefore look forward to similar studies on human fetal adrenal and gonads using RNA-Seq and ultimately single cell fate mapping approaches as have been achieved in mouse.

**Is the work clearly and accurately presented and does it cite the current literature?**

Yes

**Is the study design appropriate and is the work technically sound?**

Yes

**Are sufficient details of methods and analysis provided to allow replication by others?**

Yes

**If applicable, is the statistical analysis and its interpretation appropriate?**

Yes

**Are all the source data underlying the results available to ensure full reproducibility?**

Yes

**Are the conclusions drawn adequately supported by the results?**

Yes

**Competing Interests:** No competing interests were disclosed.

**We have read this submission. We believe that we have an appropriate level of expertise to confirm that it is of an acceptable scientific standard.**

Author Response 17 Oct 2017

**John Achermann**, UCL GOS Institute of Child Health, UK

**We thank the reviewers for their positive comments and outlining some limitations. We have addressed these as shown in bold below and modified the revised manuscript accordingly.**

Finally, while the authors used a highly comprehensive set of tissues, expression analysis using microarray platforms can have several drawbacks compared to technologies such as RNA-Seq. Microarrays have been shown to have poorer sensitivity for lowly-abundant RNA compared to RNA-Seq and may also miss expression data for poorly annotated genes and alternative transcripts. We therefore look forward to similar studies on human fetal adrenal and gonads using RNA-Seq and ultimately single cell fate mapping approaches as have been achieved in mouse.

**These comments provide a very useful summary of potential drawbacks. We have included a paragraph in the discussion outlining some limitations of the study and future directions.**

**Competing Interests:** No competing interests were disclosed.



Referee Report 19 April 2017

doi:[10.21956/wellcomeopenres.12140.r21958](https://doi.org/10.21956/wellcomeopenres.12140.r21958)



**Olle Söder**

Department of Women's and Children's Health, Karolinska Institutet, Stockholm, Sweden

This is well written, comprehensive and important work on the transcriptome of human embryonic and fetal adrenal and gonad development. It is unique in its human focus and comparative approach on adrenal, testis and ovary. Datasets and Supplementary material have been made generously available. This reviewer has only a few comments to be considered.

1. The mathematical model and part of the statistics used are complex and not easy to follow for a non-expert. It should therefore be reviewed by an expert statistician.
2. It is not entirely clear if data from XX adrenals were compared with data from XY adrenals and if there was any difference.
3. In Fig. 13 D, lower part, SCUBE1 expression seems to be localized to flat cells in the periphery of the chords. Have the authors considered that these cells may be peritubular cells (PTC) rather than Sertoli cells or gonocytes? PTC may be identified by their expression of aSma and PDGF-Ra.

**Is the work clearly and accurately presented and does it cite the current literature?**

Yes

**Is the study design appropriate and is the work technically sound?**

Yes

**Are sufficient details of methods and analysis provided to allow replication by others?**

Yes

**If applicable, is the statistical analysis and its interpretation appropriate?**

I cannot comment. A qualified statistician is required.

**Are all the source data underlying the results available to ensure full reproducibility?**

Yes

**Are the conclusions drawn adequately supported by the results?**

Yes

**Competing Interests:** No competing interests were disclosed.

**Referee Expertise:** Reproductive physiology (basic science and clinical), testis biology, paediatric endocrinology

I have read this submission. I believe that I have an appropriate level of expertise to confirm that it is of an acceptable scientific standard.

Author Response 17 Oct 2017

**John Achermann**, UCL GOS Institute of Child Health, UK

**We thank the reviewers for their constructive comments. We have addressed these as shown in bold below and modified the revised manuscript accordingly.**

This reviewer has only a few comments to be considered.

The mathematical model and part of the statistics used are complex and not easy to follow for a non-expert. It should therefore be reviewed by an expert statistician.

**Most of the statistics used for comparing expression between samples and heatmaps use a standard R package. The model developed is also a fairly standard approach and similar profiles were obtained using soft and hard clustering analysis (where genes can be clustered to multiple or single clusters), but the model provided more detailed analysis over time.**

It is not entirely clear if data from XX adrenals were compared with data from XY adrenals and if there was any difference.

**The adrenal samples were intentionally chosen to be from 46,XY embryos/fetuses so that they could be compared directly with testis without the complicating effects of any sex-chromosome gene dosage. We agree that sex differences in extra gonadal tissues are an interesting area to study but are beyond the scope of this manuscript.**

In Fig. 13 D, lower part, SCUBE1 expression seems to be localized to flat cells in the periphery of the chords. Have the authors considered that these cells may be peritubular cells (PTC) rather than Sertoli cells or gonocytes? PTC may be identified by their expression of aSma and PDGF-Ra.

**Thank you. At this stage of development the cells at the boundary of the cords are not particularly flattened like classic peritubular myoid cells. Certainly the cells containing SCUBE1 are fairly round and in some cases staining is seen throughout the cytoplasm and in some more centrally positioned cells. As SCUBE1 is potentially a secreted protein we wondered if the peripheral localisation was to do with this. However, we take the reviewers point that these could be developing PTM cells. We have not been able to address this further at present but will do so if we explore the role of SCUBE1 in the future.**

**Competing Interests:** No competing interests were disclosed.