

Increased risk of critical CBF levels in SAH patients with actual CPP below calculated optimal CPP

Ulf Johnson^{1,2} · Henrik Engquist^{1,3} · Anders Lewén¹ · Tim Howells¹ · Pelle Nilsson¹ · Elisabeth Ronne-Engström¹ · Elham Rostami¹ · Per Enblad¹

Received: 4 December 2016 / Accepted: 27 February 2017 / Published online: 30 March 2017
© The Author(s) 2017. This article is published with open access at Springerlink.com

Abstract

Background Cerebral pressure autoregulation can be quantified with the pressure reactivity index (PRx), based on the correlation between blood pressure and intracranial pressure. Using PRx optimal cerebral perfusion pressure (CPPopt) can be calculated, i.e., the level of CPP where autoregulation functions best. The relation between cerebral blood flow (CBF) and CPPopt has not been examined. The objective was to assess to which extent CPPopt can be calculated in SAH patients and to investigate CPPopt in relation to CBF.

Methods Retrospective study of prospectively collected data. CBF was measured bedside with Xenon-enhanced CT (Xe-CT). The difference between actual CPP and CPPopt was calculated (CPPΔ). Correlations between CPPΔ and CBF parameters were calculated with Spearman's rank order correlation coefficient (rho). Separate calculations were done using all patients (day 0–14 after onset) as well as in two subgroups (day 0–3 and day 4–14).

Results Eighty-two patients with 145 Xe-CT scans were studied. Automated calculation of CPPopt was possible in adjunct to 60% of the Xe-CT scans. Actual CPP < CPPopt was associated with higher numbers of low-flow regions (CBF < 10 ml/100 g/min) in both the early phase (day 0–3, $n = 39$, Spearman's $\rho = -0.38$, $p = 0.02$) and late acute phase of the

disease (day 4–14, $n = 35$, Spearman's $\rho = -0.39$, $p = 0.02$). CPP level per se was not associated with CBF.

Conclusions Calculation of CPPopt is possible in a majority of patients with severe SAH. Actual CPP below CPPopt is associated with low CBF.

Keywords Subarachnoid hemorrhage · SAH · Cerebral blood flow · CBF · Autoregulation · Optimal · Cerebral perfusion pressure · CPPopt · Neurointensive care

Background

The ability to maintain stable cerebral blood flow (CBF) independently of variations in systemic blood pressure is referred to as cerebral pressure autoregulation (CPA). In aneurysmal subarachnoid hemorrhage (SAH), CPA may be disturbed to different extents [15]. Disturbed CPA in SAH is associated with delayed cerebral ischemia (DCI), vasospasm and unfavorable outcome [5, 7, 16]. CPA can be assessed with a number of methodologies, one of which is the pressure reactivity index (PRx) [9]. PRx is an autoregulatory index that relies on the correlation between spontaneous fluctuations in mean arterial blood pressure (MAP) and intracranial pressure (ICP). PRx has been studied extensively in traumatic brain injury (TBI) and to some extent also in SAH [2, 14].

Using PRx, optimal cerebral perfusion pressure (CPPopt) can be calculated. CPPopt is the level of cerebral perfusion pressure (CPP = MAP - ICP) within a given range where PRx is the lowest, i.e., where the status of autoregulation is optimal for the patient [26]. In TBI, patients with CPP close to their calculated optimum had better outcomes than those with large deviations, and treatment protocols focused on CPPopt have been proposed [1, 11, 29, 31]. Assessment of CPPopt is feasible also in patients with intracerebral hemorrhage and SAH,

✉ Ulf Johnson
Ulf.johnson@neuro.uu.se

¹ Department of Neuroscience/Neurosurgery, Uppsala University, S-75185 Uppsala, Sweden

² Department of Surgical sciences/Radiology, Uppsala University, Uppsala, Sweden

³ Department of Surgical sciences/Anaesthesia and Intensive care, Uppsala University, Uppsala, Sweden

but the literature is limited, and there is a need for further studies to clarify the utility of CPPopt especially in SAH patients [3, 12, 22]. The aim of the present study was twofold: (1) to assess to which extent CPPopt can be calculated in SAH patients and (2) to investigate CPPopt in relation to cerebral blood flow (CBF) measured bedside with xenon-enhanced computed tomography (Xe-CT).

Materials and methods

Study design, patients and treatment protocol

The study was a retrospective analysis on prospectively collected data. SAH patients treated at the neurointensive care unit (NICU) at Uppsala University Hospital with valid CBF and PRx data were included. Data from day 0 to 14 after onset were accepted. As a consequence of the Xe-CT methodology we used, only patients with mechanical ventilation, i.e., severe SAH were included (see below).

Physiological variables (ICP, MAP and CPP) were recorded by a multimodality monitoring system and stored in a database for off-line calculations. A standardized treatment protocol was used, focusing on early detection and treatment of secondary insults [24]. Unconscious patients (GCS motor score ≤ 5) were intubated and mechanically ventilated, and received a ventriculostomy for ICP monitoring and cerebrospinal fluid (CSF) drainage. Propofol and morphine were used for sedation and analgesia, respectively. ICP and CPP targets were <20 mmHg and >60 mmHg. Other aims of the treatment protocol were normotension, normovolemia, body temperature <38 °C and normal electrolyte levels. Hydrocephalus and increased ICP were treated with CSF drainage against a pressure level of 15 mmHg. Aneurysms were treated early with endovascular coiling or surgical clipping.

Xe-CT

In Xe-CT, inhaled stable xenon gas is used as a contrast agent [30]. Xenon is an inert, radiopaque gas that diffuses freely over the blood-brain barrier. A gas mixture with 28% xenon was delivered to the patient via the ventilator. After two unenhanced baseline scans, repeated scans of four 1-cm-thick slices with 1-cm gap were done during the wash-in phase of xenon. Quantitative CBF values were calculated from the dynamic changes in attenuation via a modified Kety-Schmidt equation. A system with a mobile CT scanner was used, which enables CBF measurement to be done bedside at the NICU. This was considered an advantage since severely ill patients may be impossible to transfer from the NICU for CBF measurements. The measured CBF values probably also better reflect the values during neurointensive care, rather than

values measured at the radiology department, where ventilation and sedation parameters are likely to be different.

From the CBF raw data, three parameters were derived:

- Mean global cortical CBF
- Percentage of global cortical volume with CBF <20 ml/100 g/min (CBF% <20)
- Percentage of global cortical volume with CBF <10 ml/100 g/min (CBF% <10)

As a part of a standardized protocol, all intubated SAH patients were meant to undergo Xe-CT at day 0–1, day 4–7 and day 8–12 after onset of the disease. Scans could be added or omitted for clinical reasons. A common reason for not undergoing all three Xe-CT scans as planned was clinical improvement and extubation. Contraindications for Xe-CT include high oxygen demand and intractable intracranial hypertension.

PRx

PRx was calculated as the moving correlation coefficient between PRx and MAP as described previously [4]. PRx is an index of autoregulation based on the relation between MAP and ICP and has been used extensively to study autoregulation in patients with traumatic brain injury, but also SAH [3, 5, 10]. PRx ranges between -1 and $+1$, negative or near-zero values signify intact autoregulation while positive values signify disturbed autoregulation.

Optimal CPP

Optimal CPP was calculated automatically in a 4-h moving window that was updated every minute as described by Aries et al. [1]. CPP values ranging from 40 to 120 mmHg in the 4-h window were binned in intervals of 5 mmHg and values outside the range discarded. Corresponding mean PRx values were then plotted against CPP in the fixed 5 mmHg intervals. CPPopt was defined as the lowest PRx on a U-shaped curve. When a U-shaped curve could not be identified, the lowest PRx value on an ascending or descending curve was accepted, given that the curve follows a convex shape, and that the ascending curve was at the lower end of the CPP interval, or the ascending curve at the higher end of the CPP interval. If the criteria of the automatic algorithm were not fulfilled, CPPopt was not calculated for that minute.

The difference between calculated CPPopt and actual CPP (CPP Δ) was calculated as the difference between CPPopt and mean CPP during 30 min before Xe-CT. Positive CPP Δ means that the actual CPP was higher than calculated optimal CPP, and vice versa.

Statistical analyses and patient subgroups

Correlations between CPP Δ and CBF parameters were assessed with Spearman's rank order correlation coefficient (ρ). Non-parametric testing was used because of non-normality in the CBF parameters (assessed by visual inspection of the raw data) and because linear relationships could not be assumed. Three calculations were done: one using all data (day 0–14) and two subgroups using data only from day 0–3 to day 4–14, respectively. The rationale behind the subgrouping is the occurrence of vasospasm, which is seen in about 2/3 of SAH patients with the highest prevalence on day 4–14 [20, 21]. Vasospasm may affect CPA [7] and potentially also influence PRx and CPPopt calculations [18]. The two subgroup time windows correspond approximately to before and during the expected peak prevalence of vasospasm.

Only one Xe-CT per patient in each time period was used in the calculations. If a patient was scanned multiple times in the same time window, only data from one scan was used, and the first scan with valid CPPopt data was chosen primarily. Since CPP will be a determinant in CPP Δ , correlations between CPP (mean CPP 30 min before Xe-CT) and CBF parameters were also calculated to assess whether any correlations between CPP Δ and CBF parameters were attributed only to level of CPP.

Results

One-hundred forty-five Xe-CT scans were performed on 82 SAH patients with PRx data treated at the neurointensive care unit, Uppsala University Hospital, between October 2012 and January 2016 (median number of Xe-CT scans per patient = 2, range 1–4). Sixty-six percent were female, and mean age was 59.7 years (range 28–84 years). Median CT Fisher score was 4 (range 2–4) and median Hunt & Hess grade was 3 (range 1–5). Sixty-seven patients (82%) were treated with endovascular coiling and 15 patients (18%) with surgical clipping. Some patients with low Hunt & Hess grade at admission later deteriorated and were intubated and could be included in the study. Median and interquartile ranges of the CBF parameters are presented in Table 1.

CPPopt could be calculated in adjunct to 87 of the 145 Xe-CT scans (60%) in 64 of the 82 patients (78%). Of the 64 patients, 39 were examined during day 0–3 and 35 patients during day 4–14 (10 patients examined in both periods). In the patients where CPPopt could be calculated, the median and interquartile range of CPPopt, actual CPP and CPP Δ in the different time windows are presented in Table 2. Negative CPP Δ indicates actual CPP < CPPopt, and vice versa.

Association between CPP Δ and CBF parameters

Day 0–14:

CPP Δ was moderately negatively correlated with CBF% <10, CBF% <20 and mean global CBF with borderline significance. Mean CPP was not correlated with any of the CBF parameters (Table 3). Patients with actual CPP below CPPopt had significantly higher amounts of CBF% <10 (median 5% vs. 0%, $p = 0.008$, Mann-Whitney U -test, Fig 1).

Day 0–3:

CPP Δ was moderately negatively correlated with CBF% <10. Mean CPP was not correlated with any of the CBF parameters (Table 4).

Day 4–14:

CPP Δ was moderately negatively correlated with CBF% <10. Mean CPP was not correlated with any of the CBF parameters (Table 5).

Discussion

Main findings

This is, to our knowledge, the first study to investigate the relation between CPPopt and CBF in SAH patients. CPPopt could be calculated in adjunct to at least one Xe-CT scan in 78% of the patients and in 60% of all Xe-CT scans performed, using data from a 4-h time window. The fact that CPPopt could not be calculated in all patients is of course a limitation, but the numbers are reasonably high to be of use clinically. Δ CPP was negatively correlated with CBF% <10 and CBF% <20, meaning that patients with actual CPP < calculated CPPopt had higher numbers of low-flow regions (Table 3, Fig 1). The effect was not attributed to the CPP level per se, as CPP itself was not correlated with any of the CBF parameters in any of the time windows (Tables 2 and 3). This suggests that CPP in SAH patients should be individualized according to the status of autoregulation and that low CPP in relation to the calculated optimum should be avoided. The findings were consistent in both the early (day 0–3) and late (day 4–14) time windows, but were more clear when data from all monitoring times were used, possibly because of the larger sample size. In the two time windows with smaller sample size, actual CPP above CPPopt was associated with a lower number of regions with CBF <10 ml/100 g/min. This is clinically important since CBF 10 ml/100 g/min is very close to ischemic levels [19, 30].

The correlations found were only weak to moderate, and CBF is of course determined by many factors other than the difference between CPP and CPPopt. CPPopt however seems to be important to consider in the clinical setting since it provides an available measure that may be possible to use to individualize treatment according to the status of autoregulation.

Table 1 Median (interquartile range) of mean global CBF, CBF% <10 and CBF% <20 in the different time windows used in this study

| Time window | Mean global CBF ml/100 mg/min Median (interquartile range) | CBF% <10 No unit Median (interquartile range) | CBF% <20 No unit Median (interquartile range) |
|-----------------------------|--|--|--|
| Day 0–14 (<i>n</i> = 64) | 31.5 (25.0–39.0) | 1.6 (0.0–6.7) | 16.1 (4.3–34.8) |
| Day 0–3 (<i>n</i> = 39) | 32.9 (26.6–40.1) | 0.0 (0.0–6.7) | 12.9 (3.3–30.4) |
| Day 4–14 (<i>n</i> = 35) | 29.5 (24.8–38.3) | 1.8 (0.0–5.0) | 18.8 (3.3–35.0) |

It appears from the results of this study that keeping the actual CPP at the level of calculated CPPopt or even higher reduces the risk of regional hypoperfusion at critical CBF levels (<10 ml/100 g/min), while actual CPP levels below the calculated CPPopt increase the risk. The lack of association between CPP values per se and CBF may of course be a statistical artifact (type II error), but suggests that CPP need not be high, as long as it is high enough for the individual patients. It should also be noted that the dispersion of CPP values was not great (Table 1), and if low CPP values were more common, there would probably have been a correlation between CPP per se and CBF.

Since the present study was not an outcome study, the effect of the relation between CPP and CPPopt on clinical outcome is not known. Hypoperfusion after SAH has however been associated with unfavorable outcome, and optimization of CBF is probably of great importance in the clinical management [25].

Methodological issues

When calculating CPPopt, a few methodological aspects are important to consider. One is craniospinal compliance. In situations with high craniospinal compliance (large capacity to compensate for added intracranial volume), the relation between changes in cerebral blood volume (vasodilatation and vasoconstriction) and ICP may be less pronounced. Changes in MAP will then not be reflected in ICP changes regardless of the status of pressure autoregulation, and PRx will be less

reliable. This may be the case after decompressive craniectomy or when CSF is drained via an open ventricular catheter drainage system. In the ventricular drainage system used at our institution, however, a small rubber valve at the outflow tube keeps the CSF from flowing freely, and the oscillations of the ICP curve are still visible even with an open drain. There is evidence that PRx calculations are valid with open ventricular drains as long as the ICP curve has a normal configuration [1]. Furthermore, differences found in PRx calculated with open/closed ventricular drains are probably small and clinically insignificant [17]. In this study, we therefore opted to use PRx data also from time periods with open ventricular drains.

Another aspect is the time window used to calculate CPPopt. CPPopt calculated from long time periods (i.e., data from all monitoring time) produces robust associations with outcome [26]. The status of autoregulation, and therefore optimal CPP, may however be different at different time points [27]. This approach is therefore not applicable if CPPopt is to be used for clinical decision-making. In this study we used a 4-h moving time window for CPPopt calculations. This approach has proved feasible in TBI and may be valuable in the clinical setting for continuous monitoring and customization of treatment [1].

A third methodological aspect is the algorithm used to calculate CPPopt. Different methods have been described [1, 26, 31]. In the original report by Steiner et al., a U-shaped curve was required, and CPPopt was taken as the lowest point on that curve [26]. This method allowed for estimation of CPPopt

Table 2 Median (interquartile range) of CPPopt, actual CPP (30 min mean before Xe-CT) and in the different time windows used in the study

| Time window | CPPopt, median (interquartile range) | Actual CPP, median (interquartile range) | CPPΔ, median (interquartile range) |
|---------------------------|---|---|---------------------------------------|
| Day 0–14 (<i>n</i> = 64) | 80.0 (72.0–88.0) | 76.9 (69.7–83.0) | –3.9 (–11.2–7.9) |
| Day 0–3 (<i>n</i> = 39) | 77.0 (71.0–86.0) | 74.7 (69.1–83.0) | –3.9 (–6.6–8.0) |
| Day 4–14 (<i>n</i> = 35) | 81.0 (73.0–93.0) | 79.8 (71.5–85.1) | –3.0 (–12.4–6.3) |

Negative CPPΔ indicates actual CPP < calculated CPPopt and vice versa

Table 3 Correlations between CPP Δ /mean CPP (30 min mean before Xe-CT) and CBF parameters

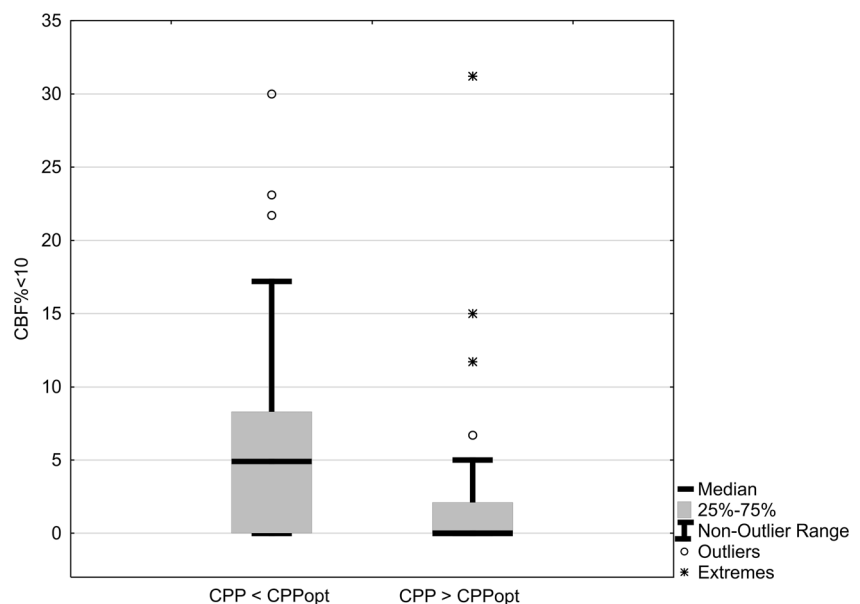
| | CPP Δ | | Actual CPP | |
|-----------------|--------------|-------|------------|------|
| | Rho | p | Rho | p |
| Mean global CBF | 0.24 | 0.05 | -0.08 | 0.51 |
| CBF% <10 | -0.39 | 0.002 | 0.01 | 0.94 |
| CBF% <20 | -0.27 | 0.03 | 0.11 | 0.37 |

Time window = day 0–14, $n = 64$. Rho, p = Spearman's rank order correlation

in 60% of patients, which is in accordance with the results of this study. Other approaches have allowed different curve shapes as well or simply taken CPPopt as the lowest PRx in a given CPP interval [1, 31]. In this study, CPPopt was taken as either the lowest PRx on a U-shaped curve or the lowest PRx on an ascending or descending convex curve. In case of an ascending or descending convex curve, it was assumed that the range of CPP was too small to form a U-shaped optimization curve, and a U-shaped curve would be found with a wider CPP range.

Another consideration is how vasospasm may affect PRx. Vascular constriction at different levels of the vascular tree may affect autoregulation in different ways. The calculation of PRx may also be affected in an unpredictable way, and the PRx values may be invalid with both false high and low values making interpretation difficult [18]. Calcium antagonists (Nimodipine) are routinely used in SAH and improve outcome [13]. However, its impact on autoregulation is not clear. Calcium antagonists have a direct effect on smooth muscle cells and in one study on healthy subjects have been shown to affect CBF and flow velocity in intracerebral arteries [28].

Fig. 1 Patients with actual CPP < calculated optimal CPP had higher numbers of regions with CBF <10 ml/100 g/min. $p = 0.008$, Mann-Whitney U -test. Time window = day 0–14, $n = 64$

**Table 4** Correlations between CPP Δ /mean CPP (30 min mean before Xe-CT) and CBF parameters

| | CPP Δ | | Actual CPP | |
|-----------------|--------------|------|------------|------|
| | Rho | p | Rho | p |
| Mean global CBF | 0.15 | 0.37 | -0.22 | 0.18 |
| CBF% <10 | -0.38 | 0.02 | 0.02 | 0.88 |
| CBF% <20 | -0.19 | 0.25 | 0.21 | 0.20 |

Time window = day 0–3, $n = 39$. Rho, p = Spearman's rank order correlation

Another study on SAH patients found that Nimodipine affected one autoregulatory index (ORx) but not PRx [8]. A limitation of the present study is that vasospasm was not assessed routinely with transcranial Doppler or angiography. The effect of vasospasm on the measurement of CPPopt could therefore not be evaluated. However, it is unlikely that vasospasm occurred during the early period day 0–3 and the results were consistent for all periods.

Retrospective studies, such as the present, are susceptible to bias. For example, the inclusion of subjects may be different if subjects are recruited continuously by predetermined criteria. Confounding is another common problem in retrospective studies, i.e., the effects are caused by unknown factors that are not measured. Since the data in this study were collected systematically in a prospective fashion and not known to the investigators at the time of study design, some of the inherent limitations of a retrospective study are overcome.

Finally, studies with a small sample size, such as the present study, are common in clinical research and have some caveats regarding significance testing. A reduced ability of

Table 5 Correlations between CPP Δ /mean CPP (30 min mean before Xe-CT) and CBF parameters

| | CPP Δ | | Actual CPP | |
|-----------------|--------------|------|------------|------|
| | Rho | p | Rho | p |
| Mean global CBF | 0.29 | 0.09 | 0.23 | 0.18 |
| CBF% <10 | -0.39 | 0.02 | -0.12 | 0.51 |
| CBF% <20 | -0.30 | 0.08 | -0.03 | 0.87 |

Time window = day 4–14, $n = 35$. Rho, p = Spearman's rank order correlation

detecting a true effect is intuitive, but there is also an increased risk of significant findings being false positives [6, 23]. Increasing the statistical power by increasing the sample size decreases these risks. In clinical research, however, this is not always possible. The present study is to be considered hypothesis generating rather than hypothesis testing. The statistical methods were chosen to be as robust as possible, and we do not make any claims about effect sizes. The results must still be interpreted with some caution.

Conclusions

Calculation of CPP_{opt} was possible in clearly more than half of the SAH patients included in the study (60% of all examinations and 78% of the examined patients) using data from both open/closed ventricular drains.

Actual CPP below CPP_{opt} is associated with low CBF.

Taken together, the present study demonstrates the physiological CBF properties of CPP_{opt} and that CPP_{opt} may be a valuable tool to monitor SAH patients and individualize CPP treatment to avoid regional hypoperfusion. Further studies are warranted to evaluate the utility of CPP_{opt} in the clinical management of SAH patients.

Acknowledgements To Dr Peter Smielewski, University of Cambridge, UK, and Dr. Marcel J.H. Aries, University of Groningen, The Netherlands, for their generous help in implementing and validating the CPP_{opt} algorithm and to Johan Bäckander for dedicated work with the Xe-CT scans.

Compliance with ethical standards

Disclosure The authors have no conflicts of interest to disclose.

Funding No funding was received for this research.

Conflict of interest All authors certify that they have no affiliations with or involvement in any organization or entity with any financial interest (such as honoraria; educational grants; participation in speakers' bureaus; membership, employment, consultancies, stock ownership, or other equity interest; and expert testimony or patent-licensing arrangements) or non-financial interest (such as personal or professional

relationships, affiliations, knowledge or beliefs) in the subject matter or materials discussed in this manuscript.

Ethical approval All procedures performed in studies involving human participants were in accordance with the ethical standards of the institutional and/or national research committee and with the 1964 Helsinki Declaration and its later amendments or comparable ethical standards. The study was approved by the Uppsala regional ethical review board and the local radiation safety authority. For this type of study formal consent is not required.

Open Access This article is distributed under the terms of the Creative Commons Attribution 4.0 International License (<http://creativecommons.org/licenses/by/4.0/>), which permits unrestricted use, distribution, and reproduction in any medium, provided you give appropriate credit to the original author(s) and the source, provide a link to the Creative Commons license, and indicate if changes were made.

References

1. Aries MJH, Czosnyka M, Budohoski KP et al (2012) Continuous determination of optimal cerebral perfusion pressure in traumatic brain injury. *Crit Care Med* 40(8):2456–2463
2. Barth M, Woitzik J, Weiss C, Muench E, Diepers M, Schmiedek P, Kasuya H, Vajkoczy P (2010) Correlation of clinical outcome with pressure-, oxygen-, and flow-related indices of cerebrovascular reactivity in patients following aneurysmal SAH. *Neurocrit Care* 12(2):234–243
3. Bijlenga P, Czosnyka M, Budohoski KP, Soehle M, Pickard JD, Kirkpatrick PJ, Smielewski P (2010) "Optimal cerebral perfusion pressure" in poor grade patients after subarachnoid hemorrhage. *Neurocrit Care* 13(1):17–23
4. Brady KM, Shaffner DH, Lee JK, Easley RB, Smielewski P, Czosnyka M, Jallo GI, Guerguerian A-M (2009) Continuous monitoring of cerebrovascular pressure reactivity after traumatic brain injury in children. *Pediatrics* 124(6):e1205–1212
5. Budohoski KP, Czosnyka M, Smielewski P, Kasprócz M, Helmy A, Bulters D, Pickard JD, Kirkpatrick PJ (2012) Impairment of cerebral autoregulation predicts delayed cerebral ischemia after subarachnoid hemorrhage a prospective observational study. *Stroke* 43(12):3230–3237
6. Button KS, Ioannidis JPA, Mokrysz C, Nosek BA, Flint J, Robinson ESJ, Munafò MR (2013) Power failure: why small sample size undermines the reliability of neuroscience. *Nat Rev Neurosci* 14(5):365–376
7. Calviere L, Nasr N, Arnaud C, Czosnyka M, Viguier A, Tissot B, Sol J-C, Larrue V (2015) Prediction of delayed cerebral ischemia after subarachnoid hemorrhage using cerebral blood flow velocities and cerebral autoregulation assessment. *Neurocrit Care* 23(2):253–258
8. Choi HA, Ko S-B, Chen H et al (2012) Acute effects of Nimodipine on cerebral vasculature and brain metabolism in high grade subarachnoid hemorrhage patients. *Neurocrit Care* 16(3):363–367
9. Czosnyka M, Smielewski P, Kirkpatrick P, Laing RJ, Menon D, Pickard JD (1997) Continuous assessment of the cerebral vasomotor reactivity in head injury. *Neurosurgery* 41(1):11–17–19
10. Czosnyka M, Smielewski P, Kirkpatrick P, Menon DK, Pickard JD (1996) Monitoring of cerebral autoregulation in head-injured patients. *Stroke J Cereb Circ* 27(10):1829–1834
11. Dias C, Silva MJ, Pereira E et al (2015) Optimal cerebral perfusion pressure management at bedside: a single-center pilot study. *Neurocrit Care* 23(1):92–102

12. Diedler J, Santos E, Poli S, Sykora M (2014) Optimal cerebral perfusion pressure in patients with intracerebral hemorrhage: an observational case series. *Crit Care Lond Engl* 18(2):R51
13. Dorhout Mees SM, Rinkel GJE, Feigin VL, Algra A, van den Bergh WM, Vermeulen M, van Gijn J (2007) Calcium antagonists for aneurysmal subarachnoid haemorrhage. *Cochrane Database Syst Rev* 3, CD000277
14. Eide PK, Sorteberg A, Bentsen G, Marthinsen PB, Stubhaug A, Sorteberg W (2012) Pressure-derived versus pressure wave amplitude-derived indices of cerebrovascular pressure reactivity in relation to early clinical state and 12-month outcome following aneurysmal subarachnoid hemorrhage. *J Neurosurg* 116(5):961–971
15. Fontana J, Moratin J, Ehrlich G, Scharf J, Weiß C, Schmieder K, Barth M (2015) Dynamic autoregulatory response after aneurysmal subarachnoid hemorrhage and its relation to angiographic vasospasm and clinical outcome. *Neurocrit Care* 23(3):355–363
16. Fontana J, Wenz H, Schmieder K, Barth M (2016) Impairment of dynamic pressure autoregulation precedes clinical deterioration after aneurysmal subarachnoid hemorrhage. *J Neuroimaging Off J Am Soc Neuroimaging* 26(3):339–345
17. Howells T, Johnson U, McKelvey T, Ronne-Engström E, Enblad P (2017) The effects of ventricular drainage on the intracranial pressure signal and the pressure reactivity index. *J Clin Monit Comput* 31(2):469–478
18. Johnson U, Engquist H, Howells T, Nilsson P, Ronne-Engström E, Lewén A, Rostami E, Enblad P (2016) Bedside xenon-CT shows lower CBF in SAH patients with impaired CBF pressure autoregulation as defined by pressure reactivity index (PRx). *Neurocrit Care* 25(1):47–55
19. Kaufmann AM, Firlirk AD, Fukui MB, Wechsler LR, Jungries CA, Yonas H (1999) Ischemic core and penumbra in human. *Stroke* 30(1):93–99
20. Mizuno M, Nakajima S, Sampei T, Nishimura H, Hadeishi H, Suzuki A, Yasui N, Nathal-Vera E (1994) Serial transcranial Doppler flow velocity and cerebral blood flow measurements for evaluation of cerebral vasospasm after subarachnoid hemorrhage. *Neurol Med Chir (Tokyo)* 34(3):164–171
21. Rabinstein AA, Friedman JA, Weigand SD, McClelland RL, Fulgham JR, Manno EM, Atkinson JLD, Wijidicks EFM (2004) Predictors of cerebral infarction in aneurysmal subarachnoid hemorrhage. *Stroke* 35(8):1862–1866
22. Rasulo FA, Girardini A, Lavinio A, De Peri E, Stefini R, Cenzato M, Nodari I, Latronico N (2012) Are optimal cerebral perfusion pressure and cerebrovascular autoregulation related to long-term outcome in patients with aneurysmal subarachnoid hemorrhage? *J Neurosurg Anesthesiol* 24(1):3–8
23. Royall RM (1986) The effect of sample size on the meaning of significance tests. *Am Stat* 40(4):313–315
24. Ryttefors M, Howells T, Nilsson P, Ronne-Engström E, Enblad P (2007) Secondary insults in subarachnoid hemorrhage: occurrence and impact on outcome and clinical deterioration. *Neurosurgery* 61(4):704–714, 715
25. Schubert GA, Seiz M, Hegewald AA, Manville J, Thomé C (2009) Acute hypoperfusion immediately after subarachnoid hemorrhage: a xenon contrast-enhanced CT study. *J Neurotrauma* 26(12):2225–2231
26. Steiner LA, Czosnyka M, Piechnik SK, Smielewski P, Chatfield D, Menon DK, Pickard JD (2002) Continuous monitoring of cerebrovascular pressure reactivity allows determination of optimal cerebral perfusion pressure in patients with traumatic brain injury. *Crit Care Med* 30(4):733–738
27. Sviri GE, Aaslid R, Douville CM, Moore A, Newell DW (2009) Time course for autoregulation recovery following severe traumatic brain injury. *J Neurosurg* 111(4):695–700
28. Tzeng Y-C, Chan GSH, Willie CK, Ainslie PN (2011) Determinants of human cerebral pressure–flow velocity relationships: new insights from vascular modelling and Ca²⁺ channel blockade. *J Physiol* 589(Pt 13):3263–3274
29. Weersink CSA, Aries MJH, Dias C et al (2015) Clinical and physiological events that contribute to the success rate of finding “optimal” cerebral perfusion pressure in severe brain trauma patients. *Crit Care Med* 43(9):1952–1963
30. Yonas H, Sekhar L, Johnson DW, Gur D (1989) Determination of irreversible ischemia by xenon-enhanced computed tomographic monitoring of cerebral blood flow in patients with symptomatic vasospasm. *Neurosurgery* 24(3):368–372
31. Young AMH, Donnelly J, Czosnyka M et al (2016) Continuous multimodality monitoring in children after traumatic brain injury—preliminary experience. *PLoS One* 11(3), e0148817