

ORIGINAL ARTICLE

Disrupted-in-Schizophrenia-1 is essential for normal hypothalamic-pituitary-interrenal (HPI) axis function

Helen Eachus^{1,2}, Charlotte Bright¹, Vincent T. Cunliffe², Marysia Placzek^{2,*†}, Jonathan D. Wood^{2,3,*†} and Penelope J. Watt^{1,†}

¹Department of Animal and Plant Sciences, University of Sheffield, Western Bank, Sheffield S10 2TN, UK, ²The Bateson Centre, Department of Biomedical Science, Firth Court, Western Bank, Sheffield S10 2TN, UK and ³Sheffield Institute for Translational Neuroscience, Department of Neuroscience, University of Sheffield, Sheffield S10 2HQ, UK

*To whom correspondence should be addressed at: Department of Neuroscience, Sheffield Institute for Translational Neuroscience, University of Sheffield, 385a Glossop Road, Sheffield S10 2HQ, UK. Tel: +44 1142222243; Fax: +44 1142222290; Email: j.d.wood1@sheffield.ac.uk; The Bateson Centre, Department of Biomedical Science, Firth Court, Western Bank, Sheffield S10 2TN, UK. Tel: +44 1142222353; Fax: +44 1142222787; Email: m.placzek@sheffield.ac.uk

Abstract

Psychiatric disorders arise due to an interplay of genetic and environmental factors, including stress. Studies in rodents have shown that mutants for *Disrupted-In-Schizophrenia-1* (*DISC1*), a well-accepted genetic risk factor for mental illness, display abnormal behaviours in response to stress, but the mechanisms through which *DISC1* affects stress responses remain poorly understood. Using two lines of zebrafish homozygous mutant for *disc1*, we investigated behaviour and functioning of the hypothalamic-pituitary-interrenal (HPI) axis, the fish equivalent of the hypothalamic-pituitary-adrenal (HPA) axis. Here, we show that the role of *DISC1* in stress responses is evolutionarily conserved and that *DISC1* is essential for normal functioning of the HPI axis. Adult zebrafish homozygous mutant for *disc1* show aberrant behavioural responses to stress. Our studies reveal that in the embryo, *disc1* is expressed in neural progenitor cells of the hypothalamus, a conserved region of the vertebrate brain that centrally controls responses to environmental stressors. In *disc1* mutant embryos, proliferating *rx3+* hypothalamic progenitors are not maintained normally and neuronal differentiation is compromised: *rx3*-derived *ff1b+* neurons, implicated in anxiety-related behaviours, and *corticotrophin releasing hormone* (*crh*) neurons, key regulators of the stress axis, develop abnormally, and *rx3*-derived *pomc+* neurons are disorganised. Abnormal hypothalamic development is associated with dysfunctional behavioural and neuroendocrine stress responses. In contrast to wild type siblings, *disc1* mutant larvae show altered *crh* levels, fail to upregulate cortisol levels when under stress and do not modulate shoal cohesion, indicative of abnormal social behaviour. These data indicate that *disc1* is essential for normal development of the hypothalamus and for the correct functioning of the HPA/HPI axis.

[†]Co-senior authors

Received: January 3, 2017. Revised: February 21, 2017. Accepted: February 23, 2017

© The Author 2017. Published by Oxford University Press.

This is an Open Access article distributed under the terms of the Creative Commons Attribution License (<http://creativecommons.org/licenses/by/4.0/>), which permits unrestricted reuse, distribution, and reproduction in any medium, provided the original work is properly cited.

Introduction

Phenotypes are shaped throughout the life-course by a complex interplay between genes and the environment. When homeostasis is threatened by environmental stress, animals respond adaptively by altering their metabolism, physiology and behaviour. These adaptive responses are co-ordinated by the hypothalamic-pituitary-adrenal (HPA) axis (1). Activation of the HPA axis promotes cortisol release and promotes adaptation (2,3). Circulating cortisol in turn triggers negative feedback systems that limit HPA axis function. However, this circuit can become reprogrammed to trigger responses that are seemingly maladaptive (4,5): in humans, HPA hyperactivity is linked to heightened risk for depression and anxiety disorders (6). Maladaptive stress responses can be triggered through wide-ranging insults, and increasing evidence suggests that insults in developmentally-sensitive periods predispose individuals to later heightened vulnerability to stress. For example, it is well documented that heightened stress in early life can result in the development of adult-onset psychiatric disorders in humans (1,4,7–10). At the same time, the stress response is modulated by an individual's genetic makeup, and genotype is thought to contribute to individual differences in susceptibility to psychiatric disorders (11–14). However, whilst animal models have demonstrated that ablation of individual genetic components of the HPA axis can affect stress phenotypes and behaviour (15–18), no study has yet shown a direct link between genetic regulation of HPA axis development and maladaptive stress responses.

One well established genetic risk factor for human psychiatric illness, *Disrupted-In-Schizophrenia-1* (DISC1), was originally identified at a chromosomal translocation breakpoint in a single Scottish family, in which a high proportion of family members suffered from mental illness (19). Some translocation carriers showed a range of clinical phenotypes, including schizophrenia, major depression and bipolar disorder, whilst other carriers had no psychiatric diagnosis (19). Individuals carrying this translocation, including those with no psychiatric condition, exhibited a defect in their cognitive function during decision-making processes (P300 event-related potential), a trait considered to be a marker for risk for schizophrenia (20). The incomplete penetrance and range of psychiatric presentations make DISC1 a prime candidate for understanding how environmental factors interact with a defined genetic component to yield a variety of behavioural phenotypes.

Studies in mice have shown that DISC1 can impact on behaviour (21,22) and can also modulate reactivity to stress (21,23–28). These studies have utilised either mice with *Disc1* point mutations (27), mice carrying a naturally occurring 25 base-pair deletion in *Disc1* (29,30), or transgenic mice expressing a truncated form of human DISC1 (24,28,31). Depending on the type of mutation or transgene used, varying phenotypes have been found, with many showing an impaired response to stress (23,24,28,31–33). Studies that have investigated the mechanism through which DISC1 and stress interact to modulate behaviour have revealed epigenetic modifications in dopaminergic neurons that originate in the ventral tegmental area (24). However, no study has examined whether *Disc1* mutation alters development of the HPA axis in a manner that impacts on stress modulation.

Expression studies in primates and mice have shown that DISC1 orthologues are prominently expressed in the hypothalamus (34–36), a small evolutionarily conserved part of the brain that coordinates responses to stress. Analysis of DISC1 expression in the human brain has mainly focused on the

hippocampus, but expression patterns here correspond well with those in the primate and rodent hippocampus, suggesting some level of conservation (37). We previously observed strong expression of *disc1* in the ventral diencephalon of zebrafish embryos (38). We therefore reasoned that *disc1* may be required for normal hypothalamic development and functioning of the HPA axis or corresponding hypothalamic-pituitary-interrenal (HPI) axis in fish.

To address this hypothesis, we utilised two lines of zebrafish harbouring nonsense mutations in *disc1* (L115X and Y472X) and analysed baseline and stress-responsive behaviours in the adult. We investigated the developmental origin of mutant behavioural abnormalities, and show that *disc1* is essential for normal development of the early hypothalamus and HPI axis function.

Results

Adult *disc1* mutants exhibit anxiety-like behaviour and aberrant behavioural stress responses

The L115X and Y472X mutations both introduce a premature stop codon in the N-terminal head domain of DISC1 (Fig. 1A). We have maintained both lines on a TL background and found that homozygous mutants are born in Mendelian ratios, hatch normally, are viable to adulthood, and fertile. Quantitative RT-PCR demonstrated that Y472X mRNA may be subject to nonsense-mediated decay (Fig. 1B). We first analysed whether, as in mice, the baseline behaviour of the adult *disc1* mutants, or their response to an acute stressor, is significantly different to wild type siblings. Adult Y472X mutants were tested for baseline behaviours and adult L115X mutants were tested for response to an established stress paradigm: exposure to alarm substance (Schreckstoff: a zebrafish skin extract that induces a profound fear response (39,40)). In an open field test, adult Y472X fish showed increased freezing and increased fast swimming compared to wild type siblings (Fig. 1C–D). In a light-dark test, Y472X fish showed no preference for the light compartment, in contrast to wild type siblings (Fig. 1E). In the tank diving test, L115X mutants did not increase bottom dwell time after treatment with alarm substance, in contrast to wild type siblings (Fig. 1F). Abnormalities in baseline and stress-responsive behaviour have also been described in adult *Disc1* mouse models (24,27,28,31–33). These data show that the role of DISC1 in stress responses is evolutionarily conserved.

Hypothalamic progenitors, including *rx3+* progenitors, are not maintained normally in *disc1* mutant embryos

DISC1 governs neuronal progenitor proliferation (41,42), so we reasoned that early developmental abnormalities may underlie the observed adult phenotypes. Studies in mice have shown that cellular homeostasis is disrupted in the cortex of *disc1* mutants where cortical progenitors differentiate prematurely due to compromised Wnt/GSK3 signaling (41,42). Similarly, in zebrafish, *zDisc1* promotes brain neurogenesis by promoting Wnt signaling (43), while a study in human induced pluripotent stem cells linked disruption of DISC1 with altered Wnt signaling and neural progenitor cell differentiation (44). To date, however, no study has analysed progenitor cells or differentiating neurons in the hypothalamus.

Analysis of *disc1* in embryonic zebrafish (24–55 h post-fertilisation (hpf)/2–3 days post-fertilisation (dpf)) revealed that expression is most prominent in the basal part of the brain, in

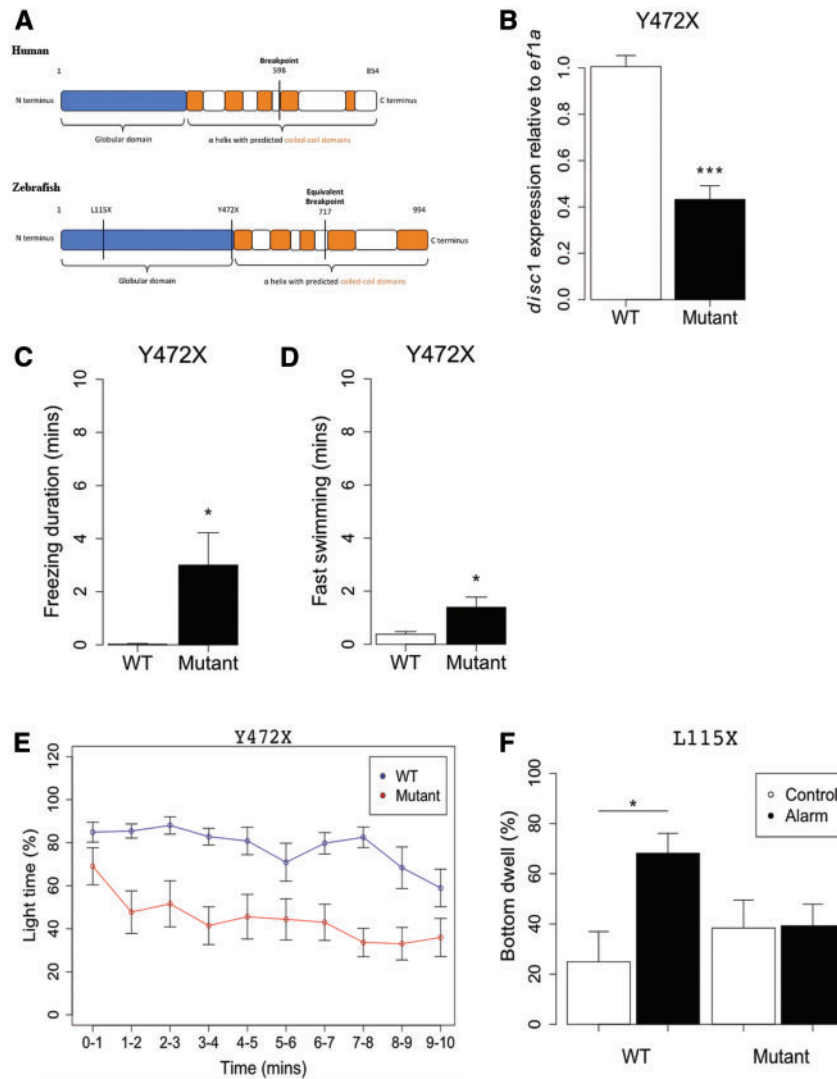


Figure 1. Abnormal behaviour in adult *disc1* zebrafish. (A) DISC1 protein schematic in human (upper) and zebrafish (lower). The predicted human DISC1 protein is 854 amino acids long, consisting of a globular N-terminal domain and C-terminal domain with predicted coiled coil regions (19). The breakpoint observed in the original Scottish pedigree is shown at 598 amino acids. The predicted zebrafish *disc1* protein is 994 amino acids long, similarly consisting of a globular N-terminal domain and C-terminal domain with predicted coiled coil regions (38). The L115X and Y472X stop codons, as well as the predicted equivalent site for the human translocation breakpoint are illustrated. (B) Quantitative RT-PCR for *disc1* in 2 dpf larvae shows a significant reduction in *disc1* mRNA in Y472X mutants (t test; $t = 7.59$, $df = 9.63$, $P = < 0.0001$). $N = 6$ each. (C) Adult Y472X mutants show a significant increase in freezing in the open field test (t test; $t = -2.44$, $df = 12.01$, $P = 0.031$). $N = 10-13$ each. (D) Adult Y472X mutants show a significant increase in high speed swimming in the open field test (t test; $t = -2.55$, $df = 13.63$, $P = 0.024$). $N = 10-13$ each. (E) Adult Y472X mutants have a significantly reduced preference for the light compartment of the light-dark test (repeated measures ANOVA; Genotype, $F = 11.79$, $df = 1,20$, $P = 0.003$; time, $F = 45.29$, $df = 1,196$, $P \leq 0.0001$; Genotype: time, $F = 0.41$, $df = 1,196$, $P = 0.522$). $N = 9-13$ each. (F) Alarm substance increases bottom dwell of L115X wild types in the tank diving test ($P = 0.027$), but has no effect on mutants ($P = 0.99$) (two-way ANOVA; Genotype: alarm interaction, $F = 4.47$, $df = 1,35$, $P = 0.042$). $N = 9-12$ each.

particular the hypothalamus (Fig. 2A-C,F-H). Transverse sections through the 55 hpf hypothalamus show that *disc1* is restricted to cells around the lateral recesses and posterior tuberal 3rd ventricle (Fig. 2J-M,O), neurogenic zones that harbour proliferating progenitors (45-50). Throughout this period, the expression of *disc1* is largely adjacent to that of retinal homeobox 3 (*rx3*) a conserved paired-like homeodomain transcription factor (Fig. 2D,I,N), which, in the tuberal hypothalamus, demarcates progenitor cells that give rise to specific hypothalamic neuronal populations, including neurons of the ventromedial nucleus (VMN) and arcuate nucleus (Arc) (51,52).

To address whether, similar to its role in the mouse cortex, DISC1 maintains hypothalamic progenitor cells, we compared *rx3* expression in wild type and *disc1* mutant embryos and post-

hatched (5 dpf) larvae. In both lines, *rx3* is altered in *disc1* mutants in comparison to wild type siblings (Fig. 3A-L; Supplementary Material, Fig. S1). In Y472X fish, *rx3* is reduced in mutant fish compared to wild type siblings at all stages examined (24 hpf-5 dpf) (Fig. 3A,C,F,G,I,L). In L115X mutant fish, *rx3* transcripts are detected at higher levels at 24 hpf than in wild type siblings (Fig. 3B and H), but from 3 dpf, L115X mutants show a similar reduction to that detected in Y472X mutants (Fig. 3D,E,J,K). Transverse sections show that *rx3* is expressed in the 3rd ventricle up to 3 dpf and in the lateral recesses up to 5 dpf in wild-type fish (Fig. 3C-F,Q). By contrast, from 2 dpf, both L115X and Y472X mutant larvae show a significant reduction in *rx3* expression in the lateral recesses, and no expression can be detected in the 3rd ventricle (Fig. 3I-L,W and Fig. 3 legend). This

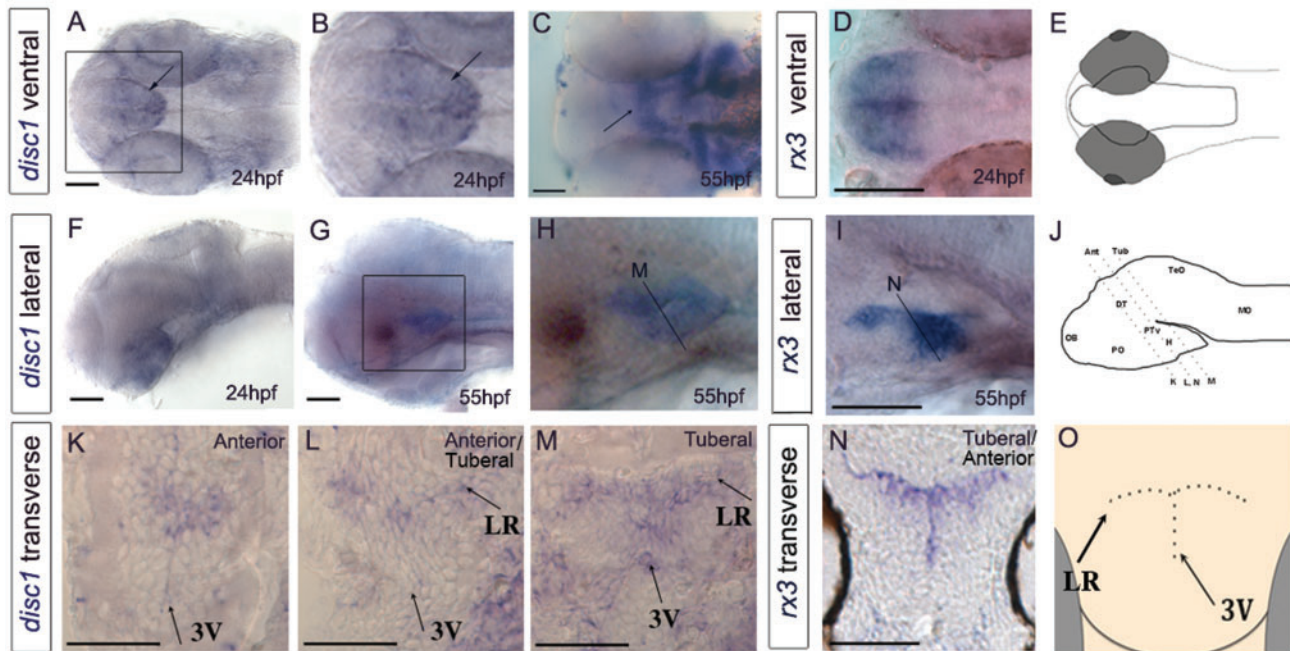


Figure 2. Expression of *disc1* in the larval zebrafish brain. (A–J) 24 hpf or 55 hpf embryos after in situ hybridization for *disc1* (A–C, F–H) or *rx3* (D, I) shown in ventral whole-mount view (A–D) or side view (F–I). Anterior to left. (B,H) show high power views of boxed regions in (A,G). (E,J) show schematic ventral and side views. Arrows point to expression of *disc1* in hypothalamus. Lines in side views (H–J) indicate planes of sections shown in (K–N). (K–N) Transverse sections taken through 55 hpf embryos after in situ hybridization for *disc1* (K–M) or *rx3* (N). Schematic (O) shows position of 3rd ventricle and lateral recesses. Abbreviations: 3V, 3rd ventricle; Ant, anterior; DT, dorsal thalamus; H, hypothalamus; LR, lateral recess; MO, medulla oblongata; OB, olfactory bulb; PO, preoptic region; PTv, ventral posterior tuberculum; TeO, tectum opticum; Tub, tuberal. N = 6 each. Scale bar: 50 μ m.

suggests that DISC1 is required to maintain progenitor cells and predicts that *disc1* mutants will show a premature decline in hypothalamic expression of phosphorylated histone H3 (phosH3), an M-phase marker whose expression correlates with proliferating progenitors in the embryonic zebrafish hypothalamus (45). At 24 hpf, a significant increase in phosH3⁺ cells is detected in the hypothalamus of *disc1* mutant embryos compared to wild type siblings (Fig. 3M,N,R–T). At 3 dpf, however, significantly fewer phosH3⁺ cells are detected in the hypothalamus of both *disc1* mutant strains compared to wild type siblings (Fig. 3O–Q,U–X). Together our analyses suggest that hypothalamic progenitors, including *rx3*⁺ progenitors, form, but are not maintained normally in *disc1* mutant embryos.

Abnormal neuroendocrine differentiation and activity in *disc1* mutant embryos

We extended these experiments to determine whether the changes in progenitor proliferation lead to alterations in neuronal differentiation. Lineage-tracing studies show that *rx3*⁺ progenitors in the tuberal hypothalamus give rise to VMN neurons that express the nuclear receptor, *ff1b* (also termed *nr5a1a*; an orthologue of mammalian SF1/NR5A1 (53)) and to Arc neurons that express *pro-opiomelanocortin* (*pomc*) (45,54). We therefore first determined if *disc1* mutant fish showed alterations in *ff1b* and *pomc*. We analysed both embryos at 2–3 dpf, a time when neuroendocrine cells are being born, and larvae at 5 dpf, a time when the neuroendocrine system begins to respond dynamically to external and internal cues (55).

In wild type embryos, *ff1b* is first detected in the developing hypothalamus at 24 hpf (56). The role of *ff1b* in the zebrafish

hypothalamus has not been determined, but in mice, hypothalamic *Sf1* governs anxiety behaviours (57). In both embryos and larvae, expression of *ff1b* was significantly more pronounced in the hypothalamus of L115X and Y472X mutants compared to wild type siblings (Figs. 4A–D, 5A–D; Supplementary Material, Fig. S2A–D) and was detected in greater numbers of cells (Figs. 4E and 5E). Thus, the failure to maintain *rx3*⁺ progenitors appears to correlate with an enhanced differentiation of hypothalamic *ff1b*⁺ cells. *ff1b* is also expressed in steroidogenic cells of the interrenal gland, and is essential for proper development of this tissue (58). We observed normal expression of *ff1b* in this region of *disc1* mutants (Supplementary Material, Fig. S2M–P).

The precursor peptide, proopiomelanocortin (*pomc*) defines Arc-like neurons in the hypothalamus. In wild type zebrafish, hypothalamic *pomc*⁺ neurons are detected from 32 hpf, i.e. some hours after *ff1b*⁺ cells (59). Analysis over 2–3 dpf revealed no significant difference in number of hypothalamic *pomc*⁺ cells at each time (Fig. 4F–J; Supplementary Material, Fig. S2E–H, K), but at 5 dpf, significantly fewer *pomc*⁺ neurons were detected in L115X mutants (Fig. 5J). In both L115X and Y472X mutants, *pomc*⁺ neurons appeared disorganised, and were not detected in the characteristic horseshoe pattern found in the wild type animals (Fig. 5F–I).

We next examined whether *disc1* affects corticotropin releasing hormone (*crhb*)-expressing neurons, a population that is specified in an *rx3*-independent manner (60), but that plays an instrumental role in the stress response. Analysis of *crhb* in Y472X mutants revealed embryonic expression in both the preoptic and tuberal hypothalamus, as shown in previous studies (61,62). At 2–3 dpf, increased numbers of *crhb*⁺ neurons were detected in mutant embryos, compared to wild types, in both domains (Fig. 4K–O, Supplementary Material, Fig. 2I–J, L). By

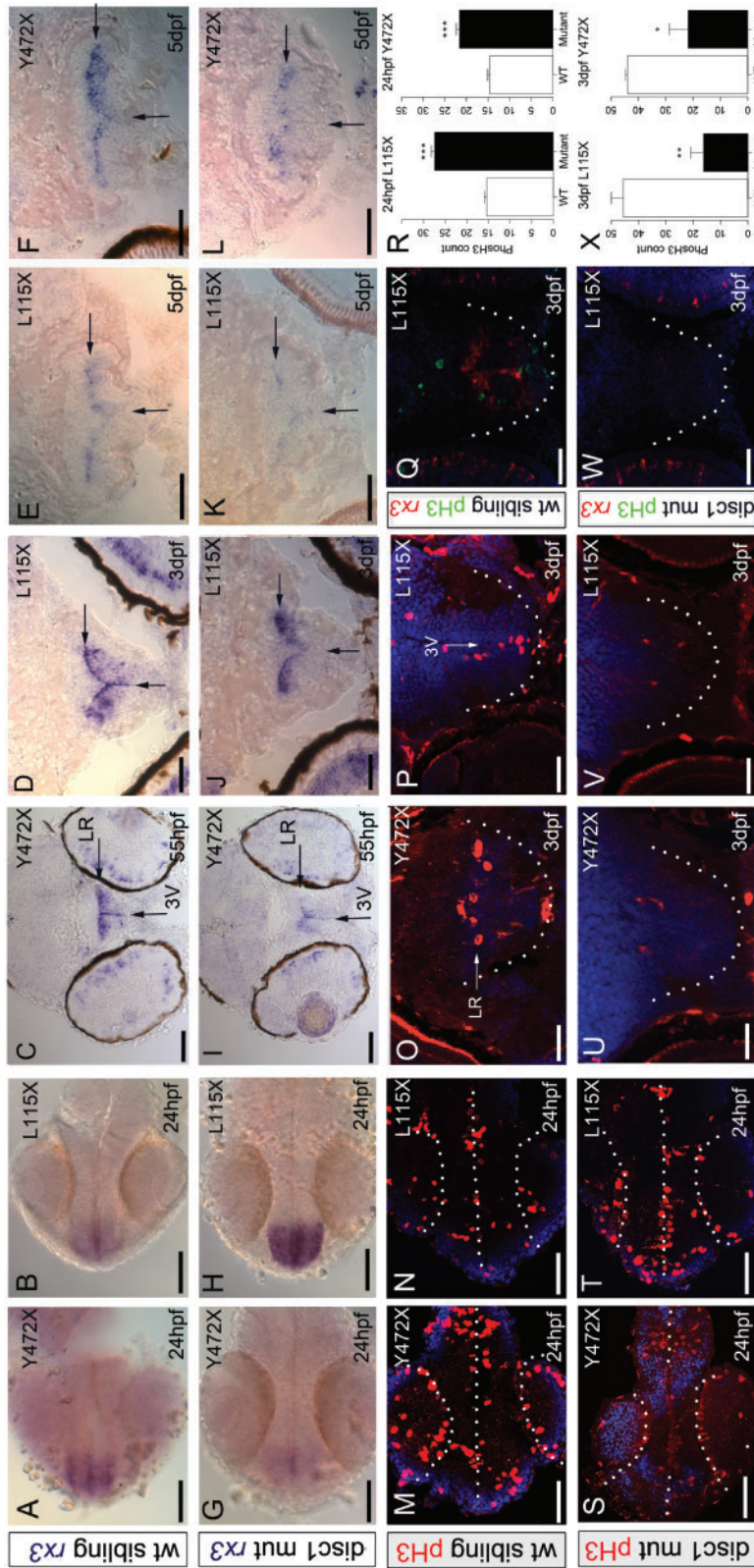


Figure 3. Progenitor cell alterations in the hypothalamus of *disc1* L115X and Y472X larvae. (A–L) *In situ* hybridization for *rx3* in wild type (A–F) and *disc1* mutant (G–L) larvae in ventral whole-mount views at 24 hpf (A,B,G,H) or representative transverse sections through posterior parts of the tubular hypothalamus at 55 hpf (C,I), 3 dpf (D,J), 3 dpf (D,J), 3 dpf (D,J), 3 dpf (D,J). Expression of *rx3* is elevated at 24 hpf, then reduced in L115X mutant larvae at later time points, when compared to wild types (B,D,E,H,I,K). In both mutant lines, no *rx3* is detected in the 3rd ventricle and the width of *rx3* expression across the lateral recess is significantly reduced at 5 dpf (L115X, *t* test, *t* = 2.80, *df* = 22, *P* = 0.010; Y472X, *t* test, *t* = 3.51, *df* = 22, *P* = 0.002). (M–X) Immunohistochemical analyses for phosphoH3 (M–P,S–V) or dual immunohistochemical/*in situ* hybridisation analyses for phosphoH3 and *rx3* (Q,W), with DAPI counter-labeling (blue) in wild type (M–Q) and *disc1* mutant (S–W) larvae in ventral whole-mount views at 24 hpf (M,N,S,T) or representative transverse sections through posterior parts of the tubular hypothalamus at 3 dpf (O–Q, U–W). Significantly more phosphoH3+ cells are detected at 24 hpf (L115X, *t* test, *t* = -12.51, *df* = 6.73, *P* ≤ 0.0001; Y472X, *t* test, *t* = -7.73, *df* = 7.06, *P* = 0.0001), and significantly fewer phosphoH3+ cells are detected at 3 dpf in mutant lines compared to wild type siblings (R,X) (L115X, *t* test, *t* = 4.58, *df* = 7.97, *P* = 0.002, Y472X, *t* test, *t* = 3.17, *df* = 4.08, *P* = 0.033). N = 5 each. Arrows point to lateral recess (LR) or 3rd ventricle (3V). In whole-mount views, dotted outlines show developing eyes and ventral midline. In transverse sections, dots outline hypothalamus. Scale bars: 50 μm.

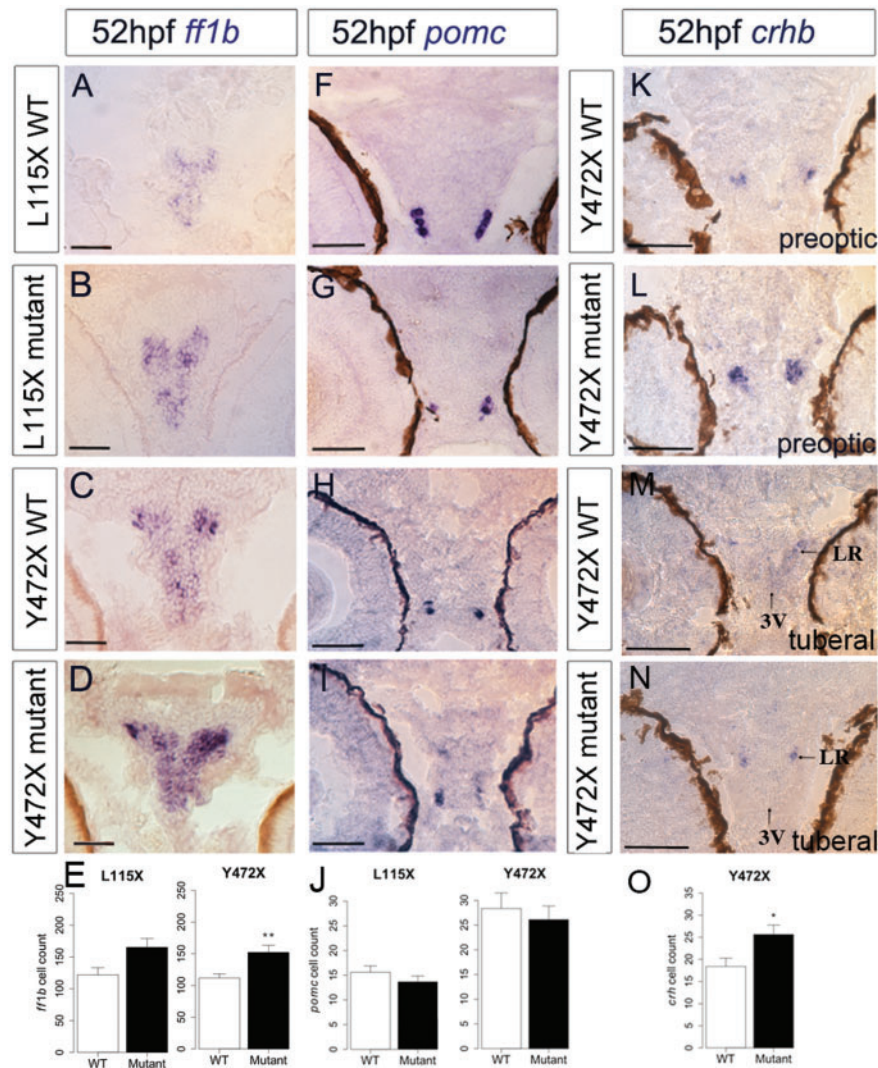


Figure 4. Abnormal neuronal differentiation in the hypothalamus of *disc1* L115X and Y472X embryos. (A–D,F–I) Transverse sections through posterior tuberal hypothalamus at 52 hpf after in situ hybridisation with *ff1b* (*nr5a1a*) (A–D) or *pomc* (F–I). *ff1b* is expressed more strongly in both L115X (B) and Y472X (D) mutant larvae, compared to wild types (A and C). (E,J) Quantitative analyses of *ff1b* and *pomc* cell number at 52hpf. *ff1b* cell count was not different in L115X embryos (t test, $t = -2.45$, $df = 3.86$, $P = 0.073$, $N = 3$), but was significantly increased in Y472X mutants compared to wild types (t test, $t = -3.13$, $df = 14.06$, $P = 0.007$, $N = 9-10$). *pomc* cell count was not significantly altered in L115X (t test, $t = 1.10$, $df = 5.56$, $P = 0.318$, $N = 3-5$) or Y472X (t test, $t = 0.54$, $df = 25.38$, $P = 0.593$, $N = 13-16$) embryos (J). (K–O) Transverse sections through preoptic (K,L) or posterior tuberal hypothalamus (M,N) at 52 hpf after in situ hybridisation with *crhb* in the Y472X line. Quantitative analysis (O) shows significantly more *crhb*⁺ cells in the preoptic and tuberal hypothalamus of mutant larvae (t test, $t = -2.53$, $df = 7.83$, $P = 0.036$). $N = 5$ each. Abbreviations: 3V, 3rd ventricle of the hypothalamus; LR, lateral recess of the hypothalamus; WT, wild type larvae; mutant, homozygous mutant larvae. Scale bar: 50 μ m.

contrast, at 5 dpf, a time when neuroendocrine-responsive transcriptional programmes adapt dynamically to the supply and demand for neuropeptides, significantly fewer *crhb*⁺ neurons could be detected in mutant larvae (Fig. 5O), and where expression was detected, it was weak, relative to that in wild type siblings, particularly in tuberal regions (Fig. 5K–S).

Taken together, our results suggest that DISC1 is required to determine appropriate numbers of hypothalamic progenitors, including *rx3*⁺ progenitors, and appropriate numbers/position of differentiated neurons, including *ff1b*⁺, *pomc*⁺ and *crh*⁺ neurons.

***disc1* mutant larvae show impaired behavioural responses to stress**

ff1b orthologues are implicated in anxiety-like behaviours in mice (57) and depression and anxiety in humans (63), whilst *crh*

orthologues are implicated in anxiety-like behaviours in mice (15,64) and primates (65), and in depression in humans (66). The altered differentiation (and, potentially activity) of *ff1b*⁺ and *crhb*⁺ neurons, together with the altered stress reactivity in *disc1* adult mutants, led us to ask whether altered behavioural responses to stress in *disc1* mutants are established early in development. We analysed each mutant strain for behavioural responses to two established stress paradigms, osmotic stress (67) and exposure to alarm substance (39,40). At 3 dpf embryos already exhibit increased cortisol levels in response to severe stress (61), while at 5 dpf, larvae display anxiety-related behaviours such as thigmotaxis and dark avoidance (68). Acute exposure to either alarm substance or sodium chloride at 5 dpf resulted in a significant increase in the nearest neighbour distance (NND, a measure of shoal cohesion) in wild type larvae, but did not affect NND in either L115X or Y472X mutants (Fig. 6A,C,E,G). By contrast,

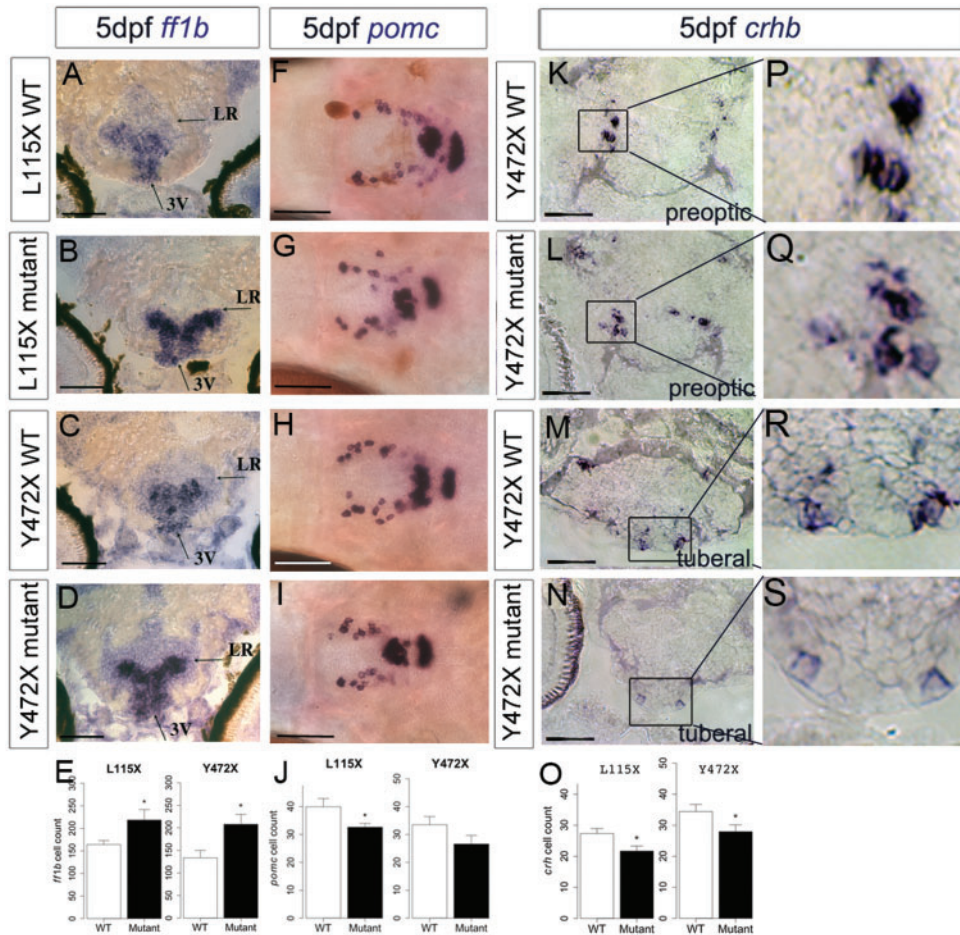


Figure 5. Abnormal neuronal differentiation in the hypothalamus of *disc1* L115X and Y472X larvae. (A–E) Transverse sections (A–D) through posterior tuberal hypothalamus at 5 dpf after *in situ* hybridisation with *ff1b*. *ff1b* is expressed more strongly in both L115X and Y472X mutant larvae, and in more cells (E) compared to wild types (L115X, *t* test, $t = -2.20$, $df = 11.64$, $P = 0.049$, Y472X, *t* test, $t = -2.70$, $df = 12.91$, $P = 0.018$). $N = 8-10$ each. (F–J) Ventral whole-mount views at 5 dpf after *in situ* hybridisation with *pomc*. *pomc*⁺ cells are disorganised in the hypothalamus of mutant larvae (G,I) compared to wild type siblings (F,H). (J) Quantitative analysis at 5 dpf shows significantly fewer hypothalamic *pomc*⁺ cells in L115X (*t* test, $t = 2.24$, $df = 21.52$, $P = 0.036$, $N = 16$) mutants compared to wild types, but no significant difference in the Y472X line (*t* test, $t = 1.63$, $df = 8.79$, $P = 0.139$, $N = 5-6$). (K–O) Transverse sections through preoptic (K, L) or posterior tuberal hypothalamus (M,N) at 5 dpf after *in situ* hybridisation with *crhb* in the Y472X line. High power views of boxed regions show weaker expression in mutant particularly in the tuberal region (P–S). Quantitative analysis (O) shows significantly fewer *crhb*⁺ cells can be detected in the preoptic and tuberal hypothalamus of both lines mutant larvae (L115X: *t* test, $t = -2.47$, $df = 21.95$, $P = 0.022$; Y472X: *t* test, $t = -2.08$, $df = 23.85$, $P = 0.049$). $N = 11-14$ each. Abbreviations: 3V, 3rd ventricle of the hypothalamus; LR, lateral recess of the hypothalamus; WT, wild type larvae; mutant, homozygous mutant larvae. Scale bar: 50 μ m.

exposure to the stressors caused a significant reduction in swimming speed of both wild type and mutant *disc1* larvae (Fig. 6B,D,F,H). L115X mutant swimming speed was not different to that of wild types, but Y472X mutants swam more slowly than wild types (Fig. 6D). To summarise, whilst both wild type and mutant larvae swam more slowly when under stress, only wild type larvae modulated shoal cohesion in response to stressors.

The failure to modulate shoaling behaviour in response to stress by *disc1* mutants could be due to abnormalities in lateral line development or the visual system, either of which could impact on shoaling behaviour (69,70). However, when exposed to a short pulse of darkness, both wild type and mutant larvae exhibit a startle response (Supplementary Material, Fig. S3A). Furthermore, analysis of FM1-43, a marker of neuromasts of the lateral line, likewise showed similar numbers in both wild type and mutant larvae (Supplementary Material, Fig. S3B). Thus, gross defects in two sensory systems - the visual system and the lateral line - do not appear to account for the impaired shoaling behaviour.

Environmental stress fails to trigger the HPI axis in *disc1* mutant larvae

The altered behavioural reactivity to stress in the *disc1* mutant larvae led us to postulate that endocrine responses might be impaired. We therefore measured cortisol levels with and without stress exposure. As anticipated (67), exposure to either alarm substance or sodium chloride led to a significant increase in whole body cortisol levels in wild type larvae. By contrast, exposure to either alarm substance or sodium chloride had no significant effect on whole body cortisol levels of either *disc1* L115X mutant larvae (Fig. 7A and C) or Y472X mutant larvae (Fig. 7B and D). No significant differences were observed in baseline cortisol levels between wild type and *disc1* mutant larvae. Together, these results show that mutations in *disc1* prevent the normal functioning of the HPI axis, in particular, the cortisol-mediated stress response.

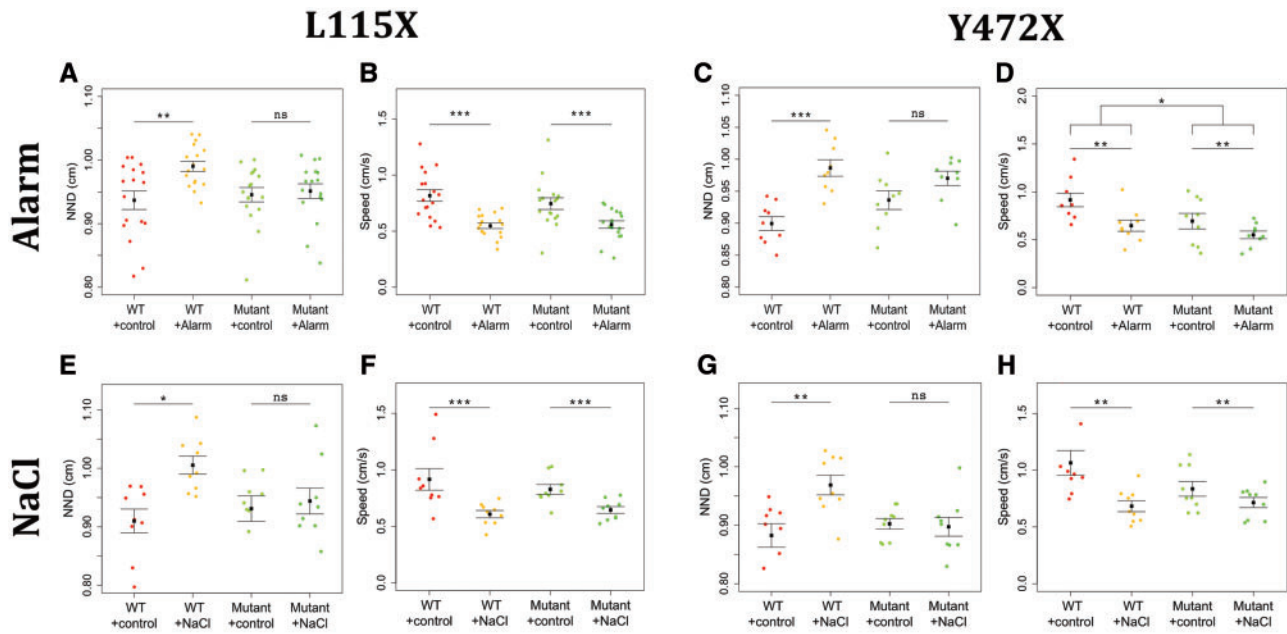


Figure 6. Shoaling behaviour of 5 dpf *disc1* L115X and Y472X larvae is modulated by chemical stressors. (A–D) Effect of alarm substance on *disc1* L115X and Y472X larval behaviour. Exposure to alarm substance caused an increase in NND of L115X ($P=0.009$) and Y472X ($P=0.0001$) wild type larvae but not mutants (L115X, $P=0.985$; Y472X, $P=0.228$) (A, C). Exposure resulted in a decrease in swim speed of both wild type and mutant L115X (two-way ANOVA, $F=29.63$, $df=1, 64$, $P<0.0001$, $N=17$) and Y472X (two-way ANOVA, $F=10.06$, $df=1, 32$, $P=0.003$, $N=9$) larvae (B, D). Y472X mutants swam slower than wild types (two-way ANOVA, $F=5.98$, $df=1, 32$, $P=0.020$, $N=9$) (D). (E–H) Effect of osmotic shock on *disc1* L115X and Y472X larval behaviour. Exposure to sodium chloride caused an increase in NND of L115X ($P=0.010$) and Y472X ($P=0.003$) wild type larvae but not mutants (L115X, $P=0.968$; Y472X, $P=0.996$) (E, G). Exposure resulted in a decrease in swim speed of both wild type and mutant L115X (two-way ANOVA, $F=18.49$, $df=1, 64$, $P=0.0002$, $N=9$) and Y472X larvae (two-way ANOVA, $F=12.32$, $df=1, 32$, $P=0.001$, $N=9$) (F, H).

Discussion

Humans that carry a mutation in *DISC1* present with a variety of psychiatric conditions, including depression, schizophrenia and bipolar disorder (19). Mouse *disc1* mutant models similarly exhibit behavioural abnormalities (21,22,27). Our studies reveal behavioural abnormalities in adult *disc1* mutant zebrafish that include freezing in the open field and a reduced preference for the light compartment in the light-dark test. What might these behaviours represent, and are they relevant to understanding the pathobiology of psychiatric disorders? Freezing behaviour is commonly observed in zebrafish after exposure to stressors such as alarm substance and is typically accompanied by darting and erratic movements (39). This combination of behaviours has been considered an anxiety-like behaviour in zebrafish (71). Moreover, freezing in the open field test is a characteristic behaviour of the zebrafish glucocorticoid receptor mutant (16), where, unaccompanied by darting, it is considered to represent a depressive-like behaviour. Since, in the open field, *disc1* mutant zebrafish exhibit increased freezing, and high speed darting in between freezing periods, we believe that behaviour in this test indicates increased anxiety. Further support for this conclusion comes through analysis of the response to the light-dark test. Wild type zebrafish strongly prefer the light compartment, a behaviour that is likely to be advantageous, in that the light allows for easier detection of food, mates and predators (68); the light compartment is also more familiar, due to its similarity to the home tank. A reduction or reversal of preference for the light compartment has previously been detected in zebrafish that have been stressed (72,73). Further, preference for the light compartment is exacerbated by exposure to anxiolytic drugs (74). Together, the decreased preference for the light compartment shown by the *disc1* Y472X mutants supports the notion that they exhibit increased anxiety-like behaviour.

DISC1 is known to interact via its N-terminal globular domain with PDE4B, mutation of which has previously been implicated in neurodevelopmental disorders such as schizophrenia (75). A recent study revealed that treatment of zebrafish larvae with the PDE4-specific small molecule inhibitor Rolipram elicited robust, anxiety-like and hyperactive behaviours (76). Taken together with our findings, these results suggest that *Disc1*-PDE4 protein complexes may perform anxiolytic functions in the zebrafish brain, disruption of which could increase the risk of developing a psychiatric disorder. Interestingly, analysis of *pde4d* homozygous mutant zebrafish indicates that *pde4d* performs an anxiogenic function in wild-type fish (76). Thus, it seems likely that *Disc1* protein might interact with a PDE4 orthologue other than *Pde4d*, such as *Pde4b*, to limit anxiogenic behaviour in zebrafish. Future biochemical studies of the formation of *Disc1*-Pde4 complexes in zebrafish may help to address this question.

The diversity of psychiatric conditions presented in the *DISC1* pedigree, suggests that *DISC1* function, or downstream effectors, might be modulated by environmental signals. Indeed, mouse models of *DISC1* display abnormal stress responses (21,23–28). We found that acute exposure to alarm substance increased bottom dwell time in wild type zebrafish, as previously described (39,77), but had no effect on *disc1* mutants. Increased bottom dwell is generally considered to be indicative of increased anxiety, and, indeed, this measure is sensitive to anxiolytic drugs (74). By this logic, a failure to increase bottom dwell duration by *disc1* L115X mutants could be considered as reduced anxiety, but this explanation seems at odds with the previously discussed anxiety-like behaviours that were detected in the Y472X mutants in the open field and light-dark tests. We therefore hypothesise that *disc1* mutants may

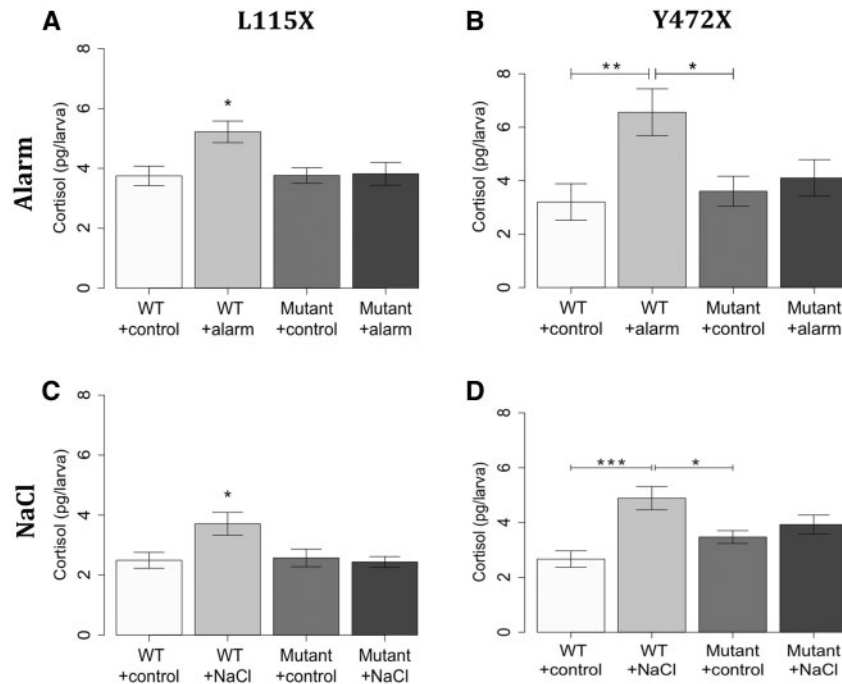


Figure 7. Effect of exposure to chemical stressors on whole body cortisol levels of 5 dpf *disc1* L115X and Y472X zebrafish larvae. **(A,B)** Exposure to alarm substance increased cortisol level in wild type L115X **(A)** ($P=0.024$, $N=15-17$) and Y472X **(B)** ($P=0.008$, $N=8-11$) larvae, but not mutants ($P=0.999$ and 0.960 respectively). *Different to all other groups at $P<0.05$. **(C,D)** Exposure to sodium chloride increased cortisol level in wild type L115X **(C)** ($P=0.026$, $N=9$) and Y472X **(D)** ($P=0.0003$, $N=8$) larvae, but not mutants ($P=0.987$ and 0.769 , respectively). *Different to all other groups at $P<0.05$.

have an impairment in their detection or processing of stressful stimuli.

The observed anxiety-like behaviours and failure to activate appropriate stress responses in the adult *disc1* mutant zebrafish led us to question whether *disc1* functions in the hypothalamus, the key regulator of the stress axis, and whether the observed behavioural defects have a developmental origin. We found that *disc1* is expressed in the developing hypothalamus in proliferating progenitor cells that line the posterior part of the 3rd ventricle and lateral recesses (45,51). Studies in mice have shown that in *Disc1* mutants, progenitor cells in the cortex exit the cell cycle, and differentiate, prematurely (41). Our studies suggest that *disc1* may play a similar role in the embryonic zebrafish hypothalamus: proliferation is initially enhanced, then prematurely reduced, in mutant embryos compared to wild type siblings. Likewise, *in situ* hybridisation reveals reduced expression of *rx3*, a marker of anterior/tuberal hypothalamic progenitors, in *disc1* mutants. Previous studies have shown that *rx3* is required for specification of *ff1b*-positive (the zebrafish homologue of SF1/NR5A1) and *pomc*-positive neurons (51), and we find that alterations in *rx3*+ progenitor cells in *disc1* mutants have downstream effects on each of these neuronal classes: *ff1b*-positive cells, which differentiate early, increase in number, while later-born *pomc*-positive neurons are disorganised, and, in the L115X line, reduced in number. In mice and zebrafish, a complete loss of *Rax/rx3* function leads to loss of *Sf1/ff1b*-positive cells (45,51), and so at first glance it is surprising that the reduced *rx3* expression observed in *disc1* mutants correlates with enhanced *ff1b* expression. However, studies in fish show that *rx3* must be downregulated in progenitor cells for them to realize their differentiation programme (45). This further supports the idea that *disc1* mutants show a premature differentiation of *rx3*-positive progenitor cells, and suggests that *ff1b*-positive neurons (which normally differentiate early) are

preferentially increased in number in *disc1* mutant fish. In summary, our studies suggest that in zebrafish, *disc1* is required for proliferation of *rx3*-positive progenitors, with loss of *disc1* function leading to premature differentiation and early excessive production of *ff1b*-positive neurons.

Several studies have linked SF1/NR5A1 to anxiety. Central nervous system-specific knockout of *Sf1* in mice leads to increased anxiety-like behaviours (57), whilst more recently, down-regulation of glutamatergic output from the VMN, which harbours *Sf1*-positive neurons, was shown to have an anxiety-reducing effect (78). NR5A1 mutations have also been linked with anxiety and depression in humans (63). Therefore, increased *ff1b/nr5a1a* expression in *disc1* mutants might indeed be expected to have behavioural consequences. Further studies are needed to determine whether upregulated expression of *ff1b* in the hypothalamus plays a direct role in the impaired stress response in *disc1* mutant larvae.

An additional possibility is that the impaired stress response that we detect in *disc1* mutant fish reflects a broader altered hypothalamic development. Expression of *disc1* is not restricted to *rx3*-positive progenitor cells, suggesting that other neuronal subsets, whose differentiation occurs independently of *rx3*, may develop abnormally in the mutant fish. In support of this idea, we detected a significant increase in the number of *crh*-positive neurons in *disc1* mutant embryos, followed by a significant reduction in *crhb* in *disc1* mutant larvae. These results are consistent with a model in which inappropriately high *crh* levels in embryos lead to unspent neuropeptide cargo, that feeds back to reduce transcription in larval neuropeptidergic cells just as they become functionally required (55). Mouse models suggest a vital role for appropriate *Crh* levels in normal stress regulation. Under stress, *Crh* knockout mice have impaired production of corticosterone, suggesting that *Crh* is essential for the normal adrenal response to stress (79). These studies raise the

possibility, therefore, that alterations in *crh* in *disc1* mutant larvae could play a direct role in aberrant stress responses.

Our studies reveal that *disc1* mutant larvae display altered behavioural and endocrine responsiveness to acute stress. Zebrafish are a shoaling fish species, in which individuals aggregate, often with a common direction. Shoaling behaviour has been reported in larvae, soon after hatching (80). When exposed to alarm substance or NaCl, wild type larvae reduce shoal cohesion, likely a stimulus avoidance response, which, in the case of alarm exposure, would confuse the predator (81). In contrast, mutant larvae appear to have a defect in this behaviour: when stressed, *disc1* mutant larvae fail to modulate shoal cohesion. Defects in brain and muscle development were previously reported in L115X mutant zebrafish (43). We did not observe morphological abnormalities in L115X homozygotes and their baseline swimming speed was normal (Fig. 6). These differences in phenotype may reflect differences in the genetic backgrounds on which the mutants were maintained (AB vs. TL). Furthermore, our studies indicate normal locomotor behaviour in response to light stimulus, and normal numbers of lateral line neuromasts, arguing against the possibility that the failure to modulate shoal cohesion is underlain by a defect in vision or mechanoreception. Instead, it raises the possibility that failure to modulate shoal cohesion indicates a reduced social interaction, as has been demonstrated in a DISC1 mouse model (28). Such changes are likely to impact negatively on the fitness of an animal, and in humans may manifest in psychiatric disease.

In support of this idea, both *disc1* mutants failed to upregulate cortisol when stressed. Under basal conditions, cortisol levels were not significantly different between mutant and wild type larvae, indicating that the differences observed in response to stress represent a failure to activate the HPI axis, rather than an inability to synthesise cortisol. Reduced corticosterone release in response to an acute stressor was seen in DISC1 transgenic mice after maternal prenatal immune activation, compared with control mice (28). In contrast, a different transgenic DISC1 mouse model showed hyper-responsivity to stress (24). In this gene-environment interaction model, isolation stress did not lead to increased corticosterone levels in wild type mice, but did lead to increased corticosterone levels in DISC1 transgenics. While these mouse models vary in the promoters used to drive DISC1 expression and the stress paradigms used, both studies, as well as our studies with zebrafish, support the conclusion that DISC1 interacts with the HPA axis, and that aberrant DISC1 function results in altered responses to stress.

In conclusion, our data suggest that *disc1* is essential for enabling normal stress responses, including stress-sensitive social behaviour, which is likely mediated, at least in part, by altered hypothalamic development. Future studies aimed at evaluating stress responses in adults may provide insight into the dynamic action of *disc1* in the HPA axis throughout the life-course. Our studies demonstrate that the *disc1* mutant zebrafish is a valuable system in which to study gene-environment interactions and the molecular pathways underlying psychiatric disorders.

Materials and Methods

Zebrafish husbandry

Adult zebrafish were maintained with a 14 h light/10 h dark cycle at 28°C according to standard protocols and were mated in groups using spawning tanks or paired using individual cross tanks (82). Both lines of *disc1* mutant zebrafish were identified in an ENU mutagenesis-based screening programme and have

been reported elsewhere (43). We obtained them as an F3 out-cross from Dr Cecilia Moens (Fred Hutchinson Cancer Research Center, Seattle, WA) and all fish used in this study were out-crossed with the TL strain to F7/F8 generations prior to in-crossing. We refer to the *disc1*^{fh291} allele as L115X and the *disc1*^{fh292} allele as Y472X throughout. Larvae were obtained from in-crosses of *disc1* wild type and in-crosses of *disc1* homozygous mutant adult siblings. For behavioural analysis, 21 larvae were maintained per petri dish in E3 medium at 28.5°C and staged according to Kimmel's guide (83). All procedures involving experimental animals were performed in compliance with local and national animal welfare laws, guidelines and policies.

Quantitative RT-PCR

Pools of 40 whole larvae were snap frozen at 2.5 dpf. RNA extraction, cDNA synthesis and qRT-PCR were carried out as previously described in Boyd et al. 2015 (84).

Behavioural analysis

Zebrafish were transferred to the behavioural analysis room and left to acclimatise for 1 h prior to analysis. Alarm substance, the osmotic stressor (250 mM NaCl) or a control solution (water) were pipetted into the centre of the fish container and movements were tracked for 10 min. Alarm substance was extracted according to the method of Schirmer and colleagues (85) and used at a concentration of 200 µl/l swimming medium. Zebrafish software (Viewpoint, France) was used to track the movement of larval and adult zebrafish and provide quantitative measures of their behaviour.

Adult behaviour

The open field and dark-light test tank was 25 x 15 x 15 cm and filled to 4.1 L, whilst the trapezoid tank diving test tank was 23.5 x 6.2 x 13.5 cm and filled maximally. The open field and tank diving tanks were bare, whilst the light-dark tank was half covered in a black opaque material on all sides. Fish were acclimated to the open field tank for 1 h prior to filming, whilst filming in the light-dark and tank diving tests began immediately after the fish was transferred to the tank. Light time is the percentage of time each fish spends in the light compartment, whilst bottom dwell is the percentage of time a fish spends in the lower half of the tank diving test tank.

Larval behaviour

Nearest-neighbour distance (NND) was quantified based on the formula provided by Miller & Gerlai (86). Briefly, NND is the mean distance of each larva to the nearest larva and is a measure of shoal cohesion, with lower values indicating greater cohesion. Swimming speed, the mean velocity of all larvae, was also measured in order to determine the motor response of larvae to the stressor.

Whole-body cortisol assay

Immediately following behavioural analysis, the larvae in a single petri dish were pooled in to a single tube and snap frozen in liquid nitrogen. Whole-body cortisol was extracted and measured according to the ELISA-based method developed by Yeh et al. (67). Cortisol standards were analysed in triplicate.

Whole-mount *in situ* hybridisation

Whole-mount *in situ* hybridisation was performed according to standard protocols (87). The following riboprobes that mark hypothalamic regions were used: *rx3* (88); *disc1* (38); *ff1b/nr5a1a* (provided by V. Laudet, Pierre and Marie Curie University, Paris, France), *pomc* (45), *crhb* (provided by W. Norton, Leicester University, UK). For analysis of *disc1*, eyes were removed after fixation. After staining, larvae were re-fixed then transferred to 30% sucrose for cryosectioning. Specimens were mounted in OCT and 12 µm thick transverse sections through the entire forebrain, were serially collected. Sense probes were routinely used as controls.

Section analysis

Section position was determined on the basis of serial number, and relative to defined morphological landmarks (optic commissure, optic vesicles, lateral ventricle, posterior hypothalamus and adenohypophysis). This enabled accurate matching of sections from wild type and mutant siblings. Note that in some cases, optic vesicles were displaced upon cryosectioning. Width across the lateral recess, in which *rx3* was expressed, was quantified manually by measuring the distance from the end point of the lateral recess, to the point where it joins the 3rd ventricle, for each section of the mid hypothalamus. The number of labeled cells in the hypothalamus was manually counted in cryosections after labeling via whole-mount *in situ* hybridization. The total number of labeled cells for each individual was counted using all hypothalamic sections, identified using morphological landmarks as described above.

Immunohistochemistry

Fixed embryos or sections were labeled using anti-phosphoH3 (06-570, Millipore) at 1:1000, as described by Muthu et al. (45), and mounted in VectaShield.

Image acquisition

Images of whole-mount and sectioned zebrafish were acquired using an Olympus BX60 microscope using Q Capture Pro 7.0 (QImaging). Images were processed using Adobe Photoshop CC 2014.

Statistical analysis

Statistical analysis and graphics were created in 'R' Version 3.3.0 (89). Data were tested for equal variance and normality prior to analysis. Statistical significance was tested using unpaired t tests, for comparisons between two samples, whilst samples classified by two or more different types of treatment were analysed by Analysis of Variance (ANOVA) and *post hoc* analysis via Tukey's test. For quantitative RT-PCR, $\Delta\Delta C_T$ values for *disc1* were calculated relative to *ef1a* for each sample. Fold change was calculated for each sample relative to the mean of the control group (wild type). Absorbance readings of cortisol standards were used to create a standard curve. Cortisol concentrations of experimental samples were determined by interpolation using a 4-parameter non-linear regression curve fit. In all cases, standard error of the mean is reported and * $P < 0.05$, ** $P < 0.01$, *** $P < 0.001$.

Supplementary Material

Supplementary Material is available at HMG online.

Acknowledgements

We would like to thank colleagues in the University of Sheffield Zebrafish Aquaria for fish husbandry, and the Zebrafish Screening Unit for access to behavioural analysis facilities and technical support.

Conflict of Interest statement. None declared.

Funding

H.E. was supported by a cross-cutting interdisciplinary network studentship provided by the University of Sheffield. Zebrafish facilities were supported through Medical Research Council awards G0400100 and G0802527. The behavioural analysis work was carried out in the Sheffield Zebrafish Screening Unit, supported by Medical Research Council pump priming grant G0802527. Funding to pay the Open Access publication charges for this article was provided by Research Councils UK.

References

1. Chrousos, G.P. (2009) Stress and disorders of the stress system. *Nat. Rev. Endocrinol.*, **5**, 374–381.
2. de Kloet, E.R., Joels, M. and Holsboer, F. (2005) Stress and the brain: From adaptation to disease. *Nat. Rev. Neurosci.*, **6**, 463–475.
3. de Celis, M.F.R., Bornstein, S.R., Androutsellis-Theotokis, A., Andoniadou, C.L., Licinio, J., Wong, M.L. and Ehrhart-Bornstein, M. (2016) The effects of stress on brain and adrenal stem cells. *Mol. Psychiatry*, **21**, 590–593.
4. Maniam, J., Antoniadis, C. and Morris, M.J. (2014) Early-life stress, HPA axis adaptation, and mechanisms contributing to later health outcomes. *Front. Endocrinol.*, **5**, 73–73.
5. McEwen, B.S. (2007) Physiology and neurobiology of stress and adaptation: Central role of the brain. *Physiol. Rev.*, **87**, 873–904.
6. O'Keane, V., Frodl, T. and Dinan, T.G. (2012) A review of atypical depression in relation to the course of depression and changes in HPA axis organization. *Psychoneuroendocrinology*, **37**, 1589–1599.
7. Carr, C.P., Severi Martins, C.M., Stingel, A.M., Lemgruber, V.B. and Juruena, M.F. (2013) The role of early life stress in adult psychiatric disorders: a systematic review according to childhood trauma subtypes. *J. Nerv. Ment. Dis.*, **201**, 1007–1020.
8. Mehta, D., Klengel, T., Conneely, K.N., Smith, A.K., Altmann, A., Pace, T.W., Rex-Haffner, M., Loeschner, A., Gonik, M., Mercer, K.B., et al. (2013) Childhood maltreatment is associated with distinct genomic and epigenetic profiles in post-traumatic stress disorder. *Proc. Natl. Acad. Sci. U.S.A.*, **110**, 8302–8307.
9. De Kloet, E.R. and Derijk, R. (2004) Signaling pathways in brain involved in predisposition and pathogenesis of stress-related disease - Genetic and kinetic factors affecting the MR/GR balance. *Ann. N. Y. Acad. Sci.*, **1032**, 14–34.
10. McEwen, B.S. and Gianaros, P.J. (2010) Central role of the brain in stress and adaptation: Links to socioeconomic status, health, and disease. *Ann. N. Y. Acad. Sci.*, **1186**, 190–222.
11. Heim, C. and Binder, E.B. (2012) Current research trends in early life stress and depression: Review of human studies on

- sensitive periods, gene-environment interactions, and epigenetics. *Exp. Neurol.*, **233**, 102–111.
12. van Os, J., Rutten, B.P.F. and Poulton, R. (2008) Gene-environment interactions in Schizophrenia: review of epidemiological findings and future directions. *Schizophr. Bull.*, **34**, 1066–1082.
 13. Kannan, G., Sawa, A. and Pletnikov, M.V. (2013) Mouse models of gene-environment interactions in schizophrenia. *Neurobiol. Dis.*, **57**, 5–11.
 14. Klengel, T., Mehta, D., Anacker, C., Rex-Haffner, M., Pruessner, J.C., Pariante, C.M., Pace, T.W.W., Mercer, K.B., Mayberg, H.S., Bradley, B., et al. (2013) Allele-specific FKBP5 DNA demethylation mediates gene-childhood trauma interactions. *Nat. Neurosci.*, **16**, 33–41.
 15. Bale, T.L., Contarino, A.B., Smith, G.W., Chan, R., Gold, L.H., Sawchenko, P.E., Koob, G.F., Vale, W.W. and Lee, K.F. (2000) Mice deficient for corticotropin-releasing hormone receptor-2 display anxiety-like behaviour and are hypersensitive to stress. *Nat. Genet.*, **24**, 410–414.
 16. Ziv, L., Muto, A., Schoonheim, P.J., Meijsing, S.H., Strasser, D., Ingraham, H.A., Schaaf, M.J.M., Yamamoto, K.R. and Baier, H. (2013) An affective disorder in zebrafish with mutation of the glucocorticoid receptor. *Mol. Psychiatry*, **18**, 681–691.
 17. Tronche, F., Kellendonk, C., Kretz, O., Gass, P., Anlag, K., Orban, P.C., Bock, R., Klein, R. and Schutz, G. (1999) Disruption of the glucocorticoid receptor gene in the nervous system results in reduced anxiety. *Nat. Genet.*, **23**, 99–103.
 18. Zelena, D., Pinter, O., Balazsfi, D.G., Langnaese, K., Richter, K., Landgraf, R., Makara, G.B. and Engemann, M. (2015) Vasopressin signaling at brain level controls stress hormone release: the vasopressin-deficient Brattleboro rat as a model. *Amino Acids*, **47**, 2245–2253.
 19. Millar, J.K., Wilson-Annan, J.C., Anderson, S., Christie, S., Taylor, M.S., Semple, C.A.M., Devon, R.S., St Clair, D.M., Muir, W.J., Blackwood, D.H.R., et al. (2000) Disruption of two novel genes by a translocation co-segregating with schizophrenia. *Hum. Mol. Genet.*, **9**, 1415–1423.
 20. Blackwood, D.H.R., Fordyce, A., Walker, M.T., St Clair, D.M., Porteous, D.J. and Muir, W.J. (2001) Schizophrenia and affective disorders - Cosegregation with a translocation at chromosome 1q42 that directly disrupts brain-expressed genes: Clinical and P300 findings in a family. *Am. J. Hum. Genet.*, **69**, 428–433.
 21. Lipina, T.V., Niwa, M., Jaaro-Peled, H., Fletcher, P.J., Seeman, P., Sawa, A. and Roder, J.C. (2010) Enhanced dopamine function in DISC1-L100P mutant mice: implications for schizophrenia. *Genes Brain Behav.*, **9**, 777–789.
 22. Kuroda, K., Yamada, S., Tanaka, M., Iizuka, M., Yano, H., Mori, D., Tsuboi, D., Nishioka, T., Namba, T., Iizuka, Y., et al. (2011) Behavioral alterations associated with targeted disruption of exons 2 and 3 of the Disc1 gene in the mouse. *Hum. Mol. Genet.*, **20**, 4666–4683.
 23. Cash-Padgett, T. and Jaaro-Peled, H. (2013) DISC1 mouse models as a tool to decipher gene-environment interactions in psychiatric disorders. *Front. Behav. Neurosci.*, **7**, 113.
 24. Niwa, M., Jaaro-Peled, H., Tankou, S., Seshadri, S., Hikida, T., Matsumoto, Y., Cascella, N.G., Kano, S., Ozaki, N., Nabeshima, T., et al. (2013) Adolescent stress-induced epigenetic control of dopaminergic neurons via glucocorticoids. *Science*, **339**, 335–339.
 25. Porteous, D.J., Thomson, P.A., Millar, J.K., Evans, K.L., Hennah, W., Soares, D.C., McCarthy, S., McCombie, W.R., Clapcote, S.J., Korth, C., et al. (2014) DISC1 as a genetic risk factor for schizophrenia and related major mental illness: response to Sullivan. *Mol. Psychiatry*, **19**, 141–143.
 26. Sullivan, P.F. (2013) Questions about DISC1 as a genetic risk factor for schizophrenia. *Mol. Psychiatry*, **18**, 1050–1052.
 27. Clapcote, S.J., Lipina, T.V., Millar, J.K., Mackie, S., Christie, S., Ogawa, F., Lerch, J.P., Trimble, K., Uchiyama, M., Sakuraba, Y., et al. (2007) Behavioral phenotypes of Disc1 missense mutations in mice. *Neuron*, **54**, 387–402.
 28. Abazyan, B., Nomura, J., Kannan, G., Ishizuka, K., Tamashiro, K.L., Nucifora, F., Pogorelov, V., Ladenheim, B., Yang, C.X., Krasnova, I.N., et al. (2010) Prenatal interaction of mutant DISC1 and immune activation produces adult psychopathology. *Biol. Psychiatry*, **68**, 1172–1181.
 29. Juan, L.-W., Liao, C.-C., Lai, W.-S., Chang, C.-Y., Pei, J.-C., Wong, W.-R., Liu, C.-M., Hwu, H.-G. and Lee, L.-J. (2014) Phenotypic characterization of C57BL/6J mice carrying the Disc1 gene from the 129S6/SvEv strain. *Brain Struct. Funct.*, **219**, 1417–1431.
 30. Gomez-Sintes, R., Kvajo, M., Gogos, J.A. and Lucas, J.J. (2014) Mice with a naturally occurring DISC1 mutation display a broad spectrum of behaviors associated to psychiatric disorders. *Front. Behav. Neurosci.*, **8**, 253.
 31. Ibi, D., Nagai, T., Koike, H., Kitahara, Y., Mizoguchi, H., Niwa, M., Jaaro-Peled, H., Nitta, A., Yoneda, Y., Nabeshima, T., et al. (2010) Combined effect of neonatal immune activation and mutant DISC1 on phenotypic changes in adulthood. *Behav. Brain Res.*, **206**, 32–37.
 32. Lipina, T.V., Zai, C., Hlousek, D., Roder, J.C. and Wong, A.H.C. (2013) Maternal immune activation during gestation interacts with Disc1 point mutation to exacerbate Schizophrenia-related behaviors in mice. *J. Neurosci.*, **33**, 7654–7666.
 33. Haque, F.N., Lipina, T.V., Roder, J.C. and Wong, A.H.C. (2012) Social defeat interacts with Disc1 mutations in the mouse to affect behavior. *Behav. Brain Res.*, **233**, 337–344.
 34. Austin, C.P., Ma, L., Ky, B., Morris, J.A. and Shughrue, P.J. (2003) DISC1 (Disrupted in Schizophrenia-1) is expressed in limbic regions of the primate brain. *Neuroreport*, **14**, 951–954.
 35. Schurov, I.L., Handford, E.J., Brandon, N.J. and Whiting, P.J. (2004) Expression of disrupted in schizophrenia 1 (DISC1) protein in the adult and developing mouse brain indicates its role in neurodevelopment. *Mol. Psychiatry*, **9**, 1100–1110.
 36. Austin, C.P., Ky, B., Ma, L., Morris, J.A. and Shughrue, P.J. (2004) Expression of disrupted-in-schizophrenia-1, a schizophrenia-associated gene, is prominent in the mouse hippocampus throughout brain development. *Neuroscience*, **124**, 3–10.
 37. James, R., Adams, R.R., Christie, S., Buchanan, S.R., Porteous, D.J. and Millar, J.K. (2004) Disrupted in Schizophrenia 1 (DISC1) is a multicompartimentalized protein that predominantly localizes to mitochondria. *Mol. Cell. Neurosci.*, **26**, 112–122.
 38. Wood, J.D., Bonath, F., Kumar, S., Ross, C.A. and Cunliffe, V.T. (2009) Disrupted-in-schizophrenia 1 and neuregulin 1 are required for the specification of oligodendrocytes and neurons in the zebrafish brain. *Hum. Mol. Genet.*, **18**, 391–404.
 39. Egan, R.J., Bergner, C.L., Hart, P.C., Cachat, J.M., Canavello, P.R., Elegante, M.F., Elkhayat, S.I., Bartels, B.K., Tien, A.K., Tien, D.H., et al. (2009) Understanding behavioral and physiological phenotypes of stress and anxiety in zebrafish. *Behav. Brain Res.*, **205**, 38–44.
 40. Speedie, N. and Gerlai, R. (2008) Alarm substance induced behavioral responses in zebrafish (*Danio rerio*). *Behav. Brain Res.*, **188**, 168–177.

41. Mao, Y., Ge, X., Frank, C.L., Madison, J.M., Koehler, A.N., Doud, M.K., Tassa, C., Berry, E.M., Soda, T., Singh, K.K., et al. (2009) Disrupted in Schizophrenia 1 regulates neuronal progenitor proliferation via modulation of GSK3 beta/beta-catenin signaling. *Cell*, **136**, 1017–1031.
42. Singh, K.K., De Rienzo, G., Drane, L., Mao, Y., Flood, Z., Madison, J., Ferreira, M., Bergen, S., King, C., Sklar, P., et al. (2011) Common DISC1 polymorphisms disrupt Wnt/GSK3 beta signaling and brain development. *Neuron*, **72**, 545–558.
43. De Rienzo, G., Bishop, J.A., Mao, Y.W., Pan, L.Y., Ma, T.P., Moens, C.B., Tsai, L.H. and Sive, H. (2011) Disc1 regulates both beta-catenin-mediated and noncanonical Wnt signaling during vertebrate embryogenesis. *faseb J.*, **25**, 4184–4197.
44. Srikanth, P., Han, K., Callahan, D.G., Makovkina, E., Muratore, C.R., Lalli, M.A., Zhou, H.L., Boyd, J.D., Kosik, K.S., Selkoe, D.J., et al. (2015) Genomic DISC1 disruption in hiPSCs alters Wnt signaling and neural cell fate. *Cell Reports*, **12**, 1414–1429.
45. Muthu, V., Eachus, H., Ellis, P., Brown, S. and Placzek, M. (2016) Rx3 and Shh direct anisotropic growth and specification in the zebrafish tuberal/anterior hypothalamus. *Development*, **143**, 2651–2663.
46. Bosco, A., Bureau, C., Affaticati, P., Gaspar, P., Bally-Cuif, L. and Lillesaar, C. (2013) Development of hypothalamic serotonergic neurons requires Fgf signalling via the ETS-domain transcription factor Etv5b. *Development*, **140**, 372–384.
47. Lee, J.E., Wu, S.-F., Goering, L.M. and Dorsky, R.I. (2006) Canonical Wnt signaling through Lef1 is required for hypothalamic neurogenesis. *Development*, **133**, 4451–4461.
48. Wang, X., Lee, J.E. and Dorsky, R.I. (2009) Identification of Wnt-responsive cells in the zebrafish hypothalamus. *Zebrafish*, **6**, 49–58.
49. Wang, X., Kopinke, D., Lin, J., McPherson, A.D., Duncan, R.N., Otsuna, H., Moro, E., Hoshijima, K., Grunwald, D.J., Argenton, F., et al. (2012) Wnt signaling regulates postembryonic hypothalamic progenitor differentiation. *Dev. Cell*, **23**, 624–636.
50. Wullmann, M.F., Puelles, L. and Wicht, H. (1999) Early post-embryonic neural development in the zebrafish: A 3-D reconstruction of forebrain proliferation zones shows their relation to prosomeres. *Eur. J. Morphol.*, **37**, 117–121.
51. Lu, F., Kar, D., Gruenig, N., Zhang, Z.W., Cousins, N., Rodgers, H.M., Swindell, E.C., Jamrich, M., Schuurmans, C., Mathers, P.H., et al. (2013) Rax is a selector gene for mediobasal hypothalamic cell types. *J. Neurosci.*, **33**, 259–272.
52. Tessmar-Raible, K., Raible, F., Christodoulou, F., Guy, K., Rembold, M., Hausen, H. and Arendt, D. (2007) Conserved sensory-neurosecretory cell types in annelid and fish forebrain: Insights into hypothalamus evolution. *Cell*, **129**, 1389–1400.
53. Kuo, M.W., Postlethwait, J., Lee, W.C., Lou, S.W., Chan, W.K. and Chung, B.C. (2005) Gene duplication, gene loss and evolution of expression domains in the vertebrate nuclear receptor NR5A (Ftz-F1) family. *Biochem. J.*, **389**, 19–26.
54. Kurrasch, D.M., Cheung, C.C., Lee, F.Y., Tran, P.V., Hata, K. and Ingraham, H.A. (2007) The neonatal ventromedial hypothalamus transcriptome reveals novel markers with spatially distinct patterning. *J. Neurosci.*, **27**, 13624–13634.
55. Kurrasch, D.M., Nevin, L.M., Wong, J.S., Baier, H. and Ingraham, H.A. (2009) Neuroendocrine transcriptional programs adapt dynamically to the supply and demand for neuropeptides as revealed in NSF mutant zebrafish. *Neural Dev.*, **4**, 22.
56. Chai, C. and Chan, W.K. (2000) Developmental expression of a novel Ftz-F1 homologue, ff1b (NR5A4), in the zebrafish *Danio rerio*. *Mech. Dev.*, **91**, 421–426.
57. Zhao, L., Kim, K.W., Ikeda, Y., Anderson, K.K., Beck, L., Chase, S., Tobet, S.A. and Parker, K.L. (2008) Central nervous system-specific knockout of steroidogenic factor 1 results in increased anxiety-like behavior. *Mol. Endocrinol.*, **22**, 1403–1415.
58. Chai, C., Liu, Y.W. and Chan, W.K. (2003) ff1b is required for the development of steroidogenic component of the zebrafish interrenal organ. *Dev. Biol.*, **260**, 226–244.
59. Liu, N.-A., Ren, M., Song, J., Rios, Y., Wawrowsky, K., Ben-Shlomo, A., Lin, S. and Melmed, S. (2008) In vivo time-lapse imaging delineates the zebrafish pituitary proopiomelanocortin lineage boundary regulated by FGF3 signal. *Dev. Biol.*, **319**, 192–200.
60. Burbidge, S., Stewart, I. and Placzek, M. (2016) Development of the Neuroendocrine Hypothalamus. *Compr. Physiol.*, **6**, 623–643.
61. Alderman, S.L. and Bernier, N.J. (2009) Ontogeny of the corticotropin-releasing factor system in zebrafish. *Gen. Comp. Endocrinol.*, **164**, 61–69.
62. Chandrasekar, G., Lauter, G. and Hauptmann, G. (2007) Distribution of corticotropin-releasing hormone in the developing zebrafish brain. *J. Comp. Neurol.*, **505**, 337–351.
63. Suwanai, A.S., Ishii, T., Haruna, H., Yamataka, A., Narumi, S., Fukuzawa, R., Ogata, T. and Hasegawa, T. (2013) A report of two novel NR5A1 mutation families: possible clinical phenotype of psychiatric symptoms of anxiety and/or depression. *Clin. Endocrinol.*, **78**, 957–965.
64. Kishimoto, T., Radulovic, J., Radulovic, M., Lin, C.R., Schrick, C., Hooshmand, F., Hermanson, O., Rosenfeld, M.G. and Spiess, J. (2000) Deletion of Crhr2 reveals an anxiolytic role for corticotropin-releasing hormone receptor-2. *Nat. Genet.*, **24**, 415–419.
65. Kalin, N.H., Fox, A.S., Kovner, R., Riedel, M.K., Fekete, E.M., Roseboom, P.H., Tromp, D.P.M., Grabow, B.P., Olsen, M.E., Brodsky, E.K., et al. (2016) Overexpressing corticotropin-releasing factor in the primate amygdala increases anxious temperament and alters its neural circuit. *Biol. Psychiat.*, **80**, 345–355.
66. Arborelius, L., Owens, M.J., Plotsky, P.M. and Nemeroff, C.B. (1999) The role of corticotropin-releasing factor in depression and anxiety disorders. *J. Endocrinol.*, **160**, 1–12.
67. Yeh, C.-M., Gloeck, M. and Ryu, S. (2013) An optimized whole-body cortisol quantification method for assessing stress levels in larval zebrafish. *Plos One*, **8**, e79406
68. Steenbergen, P.J., Richardson, M.K. and Champagne, D.L. (2011) The use of the zebrafish model in stress research. *Progress in Neuro-Psychopharmacology & Biological Psychiatry*, **35**, 1432–1451.
69. Yoshizawa, M. (2015) Behaviors of cavefish offer insight into developmental evolution. *Mol. Reprod. Dev.*, **82**, 268–280.
70. Faucher, K., Parmentier, E., Becco, C., Vandewalle, N. and Vandewalle, P. (2010) Fish lateral system is required for accurate control of shoaling behaviour. *Animal Behaviour* **79**, 679–687.
71. Cachat, J., Stewart, A., Utterback, E., Hart, P., Gaikwad, S., Wong, K., Kyzar, E., Wu, N. and Kalueff, A.V. (2011) Three-dimensional neurophenotyping of adult zebrafish behavior. *Plos One*, **6**, e17597.
72. Chakravarty, S., Reddy, B.R., Sudhakar, S.R., Saxena, S., Das, T., Meghah, V., Swamy, C.V.B., Kumar, A. and Idris, M.M. (2013) Chronic unpredictable stress (cus)-induced anxiety

- and related mood disorders in a zebrafish model: altered brain proteome profile implicates mitochondrial dysfunction. *Plos One*, **8**, e63302.
73. Champagne, D.L., Hoefnagels, C.C.M., de Kloet, R.E. and Richardson, M.K. (2010) Translating rodent behavioral repertoire to zebrafish (*Danio rerio*): Relevance for stress research. *Behav. Brain Res.*, **214**, 332–342.
 74. Gebauer, D.L., Pagnussat, N., Piato, A.L., Schaefer, I.C., Bonan, C.D. and Lara, D.R. (2011) Effects of anxiolytics in zebrafish: Similarities and differences between benzodiazepines, buspirone and ethanol. *Pharmacol. Biochem. Behav.*, **99**, 480–486.
 75. Millar, J.K., Pickard, B.S., Mackie, S., James, R., Christie, S., Buchanan, S.R., Malloy, M.P., Chubb, J.E., Huston, E., Baillie, G.S., et al. (2005) DISC1 and PDE4B are interacting genetic factors in schizophrenia that regulate cAMP signaling. *Science*, **310**, 1187–1191.
 76. Lundegaard, P.R., Anastasaki, C., Grant, N.J., Sillito, R.R., Zich, J., Zeng, Z.Q., Paranthaman, K., Larsen, A.P., Armstrong, J.D., Porteous, D.J., et al. (2015) MEK inhibitors Reverse cAMP-mediated anxiety in zebrafish. *Chem. Biol.*, **22**, 1335–1346.
 77. Mathuru, A.S., Kibat, C., Cheong, W.F., Shui, G., Wenk, M.R., Friedrich, R.W. and Jesuthasan, S. (2012) Chondroitin fragments are odorants that trigger fear behavior in fish. *Curr. Biol.*, **22**, 538–544.
 78. Cheung, C.C., Krause, W.C., Edwards, R.H., Yang, C.F., Shah, N.M., Hnasko, T.S. and Ingraham, H.A. (2015) Sex-dependent changes in metabolism and behavior, as well as reduced anxiety after eliminating ventromedial hypothalamus excitatory output. *Mol. Metabol.*, **4**, 857–866.
 79. Muglia, L., Jacobson, L., Dikkes, P. and Majzoub, J.A. (1995) Corticotropin-releasing hormone deficiency reveals major fetal but not adult glucocorticoid need. *Nature*, **373**, 427–432.
 80. Engeszer, R.E., Alberici da Barbiano, L., Ryan, M.J. and Parichy, D.M. (2007) Timing and plasticity of shoaling behaviour in the zebrafish, *Danio rerio*. *Anim. Behav.*, **74**, 1269–1275.
 81. Smith, M.F.L. and Warburton, K. (1992) Predator shoaling moderates the confusion effect in blue-green chromis, *chromis-viridis*. *Behav. Ecol. Sociobiol.*, **30**, 103–107.
 82. Nüsslein-Volhard, C., and Dahm, R. (2002) *Zebrafish: a practical approach*. Oxford: Oxford University Press, 2002, Oxford.
 83. Kimmel, C.B., Ballard, W.W., Kimmel, S.R., Ullmann, B. and Schilling, T.F. (1995) stages of embryonic-development of the zebrafish. *Dev. Dyn.*, **203**, 253–310.
 84. Boyd, P.J., Cunliffe, V.T., Roy, S. and Wood, J.D. (2015) Sonic hedgehog functions upstream of disrupted-in-schizophrenia 1 (*disc1*): implications for mental illness. *Biology Open*, **4**, 1336–1343.
 85. Schirmer, A., Jesuthasan, S. and Mathuru, A.S. (2013) Tactile stimulation reduces fear in fish. *Front. Behav. Neurosci.*, **7**, 167.
 86. Miller, N. and Gerlai, R. (2012). *Zebrafish Protocols for Neurobehavioral Research*. New York: Humana Press, Vol. 66, pp. 217–230.
 87. Thisse, C. and Thisse, B. (2008) High-resolution in situ hybridization to whole-mount zebrafish embryos. *Nat. Protoc.*, **3**, 59–69.
 88. Chuang, J.C., Mathers, P.H. and Raymond, P.A. (1999) Expression of three *Rx* homeobox genes in embryonic and adult zebrafish. *Mech. Dev.*, **84**, 195–198.
 89. R Core team. (2016). R: A language and environment for statistical computing. R Foundation for Statistical Computing, Vienna, Austria. URL <https://www.R-project.org/>.