

ARTICLE

Received 16 Sep 2016 | Accepted 14 Mar 2017 | Published 16 May 2017

DOI: 10.1038/ncomms15260

OPEN

An allosteric site in the T-cell receptor C β domain plays a critical signalling role

Kannan Natarajan¹, Andrew C. McShan², Jiansheng Jiang¹, Vlad K. Kumirov², Rui Wang¹, Huaying Zhao³, Peter Schuck³, Mulualem E. Tilahun¹, Lisa F. Boyd¹, Jinfa Ying⁴, Ad Bax⁴, David H. Margulies^{1,*} & Nikolaos G. Sgourakis^{2,*}

The molecular mechanism through which the interaction of a clonotypic $\alpha\beta$ T-cell receptor (TCR) with a peptide-loaded major histocompatibility complex (p/MHC) leads to T-cell activation is not yet fully understood. Here we exploit a high-affinity TCR (B4.2.3) to examine the structural changes that accompany binding to its p/MHC ligand (P18-I10/H2-D^d). In addition to conformational changes in complementarity-determining regions (CDRs) of the TCR seen in comparison of unliganded and bound X-ray structures, NMR characterization of the TCR β -chain dynamics reveals significant chemical shift effects in sites removed from the MHC-binding site. Remodelling of electrostatic interactions near the C β H3 helix at the membrane-proximal face of the TCR, a region implicated in interactions with the CD3 co-receptor, suggests a possible role for an allosteric mechanism in TCR signalling. The contribution of these TCR residues to signal transduction is supported by mutagenesis and T-cell functional assays.

¹Molecular Biology Section, Laboratory of Immunology, National Institute of Allergy and Infectious Diseases, National Institutes of Health, Bethesda, Maryland 20892, USA. ²Department of Chemistry and Biochemistry, University of California Santa Cruz, Santa Cruz, California 95064, USA. ³Laboratory of Cellular Imaging and Macromolecular Biophysics, National Institute of Biomedical Imaging and Bioengineering, National Institutes of Health, Bethesda, Maryland 20892, USA. ⁴Laboratory of Chemical Physics, National Institute of Diabetes and Digestive and Kidney Diseases, National Institutes of Health, Bethesda, Maryland 20892, USA. *These authors contributed equally to this work. Correspondence and requests for materials should be addressed to D.H.M. (email: dmargulies@niaid.nih.gov) or to N.G.S. (email: nsgourak@ucsc.edu).

A key step in T-cell-mediated adaptive immunity is the triggering of cell-surface $\alpha\beta$ T-cell receptors (TCR) by peptide-loaded major histocompatibility complex (p/MHC) proteins on target antigen presenting cells^{1,2}. TCR- α and - β polypeptide chains are encoded by genes assembled by recombinatorial assortment of V-J and V-D-J gene segments, respectively, and non-templated nucleotides added at junctions of rearrangement during T-cell ontogeny in the thymus. Encounter of particular clonally expressed TCR with cognate p/MHC ligand triggers a signalling cascade leading to a variety of cellular programmes including thymic selection, proliferation, cytokine production and differentiation into effector and memory T cells³.

Whereas antigen specificity is dictated by the amino-terminal variable (V) domains of the $\alpha\beta$ -receptor, signalling function is mediated by the non-covalently associated co-receptor CD3 $\gamma\epsilon$, $\delta\epsilon$ and $\zeta\zeta$ dimers, which bear cytoplasmic immunoreceptor tyrosine-based activation motifs (ITAMs)^{4,5}. Ligand binding to the TCR/CD3 complex extracellularly initiates intracellular signalling through Src kinase-mediated phosphorylation of these ITAMs⁶. In addition to their signalling function, CD3 subunits are also required for stable cell-surface expression of the TCR/CD3 complex^{7,8}. Mechanistic details concerning the transmission of signals from the extracellular domains of the TCR to the intracellular ITAMs are incomplete, and are the subject of considerable interest, the importance of which is highlighted by diseases associated with dysfunction of this cellular process⁹, the immunosuppressant role of therapeutic antibodies targeting the TCR/CD3 complex¹⁰ and the potential of synthetic TCRs towards immunotherapeutic applications^{11,12}. Efforts to understand the molecular basis of TCR-mediated signalling have relied largely on biophysical, structural and functional approaches¹³. Binding of p/MHC to the TCR induces structural changes at the cytoplasmic face of the TCR/CD3 complex, as evidenced by the accessibility of a polyproline sequence in the CD3 ϵ cytoplasmic tail¹⁴, and the repositioning of Tyr residues within the CD3 cytoplasmic ITAMs from a relatively inaccessible membrane-associated form to a cytoplasmically oriented, kinase-accessible conformation¹⁵. However, the molecular mechanism by which p/MHC binding to the TCR is communicated to the associated CD3 subunits for signalling remains unknown.

To gain further insight into the dynamics of TCR/MHC interactions, we employ complementary biophysical methods to examine the high-affinity B4.2.3 TCR in both the liganded and unliganded states. X-ray structures indicate a large rearrangement of the complementarity-determining region 3 (CDR3) loops upon binding. In addition, chemical shift mapping utilizing complementary backbone amide and side-chain methyl NMR probes reveal several residues in the C β domain of the TCR, distant from the ligand-binding interface and close to a putative CD3-binding site, that show significant perturbations upon ligand binding. Finally, mutational and functional analyses suggest a critical role of these allosteric sites in signal transduction. These results indicate a dynamic activation mechanism, where p/MHC recognition by the CDRs triggers conformational remodelling of interactions near the C β H3 helix at the membrane-proximal face of the TCR.

Results

TCR binds to its pMHC ligand with high affinity. The B4.2.3 T-cell hybridoma, derived from a BALB/c mouse immunized with P18-I10 (RGPGRAFVTI), is sensitive to picomolar concentrations of peptide presented by the MHC-I molecule, H2-D^d (refs 16,17). To probe the affinity and kinetics of the interaction between the TCR and p/MHC, we first employed surface plasmon resonance (SPR) where immobilized P18-I10/H2-D^d was offered graded concentrations of the B4.2.3 TCR. The measured affinity (K_D) is

$\sim 0.54\ \mu\text{M}$ (Fig. 1a), and no binding of the TCR was detected to H2-D^d displaying the motif peptide (MTF) AGPARAAAL, a negative control (Fig. 1b). As TCR affinities for p/MHC ligands span a wide range of K_D from 0.5 to $> 100\ \mu\text{M}$ (ref. 18), this affinity is among the highest reported for a naturally occurring TCR.

To explore the TCR/MHC interaction in a complementary assay, we employed sedimentation velocity analytical ultracentrifugation, which permits assessment of the stoichiometry as well as the affinity of the interaction. The B4.2.3 TCR interacts with P18-I10/H2-D^d strongly over a broad range of concentrations (0.1–20 μM of each component) displaying a characteristic concentration-dependent sedimentation coefficient distribution, indicative of a greater time average of molecules in complex as a function of concentration (Fig. 1c). The limiting sedimentation coefficient of $\sim 5S$ is consistent with a 1:1 stoichiometry, considering the size and shape of the individual components. The strong interaction of the TCR with the cognate P18-I10/H2-D^d ligand contrasts sharply with mixtures of B4.2.3 TCR and MTF/H2-D^d (Fig. 1d), both of which sediment at a concentration-independent velocity of 3.6S. To determine the binding affinity, we analysed the isotherm of signal weighted-average sedimentation coefficient (s_w) using the s_w values determined from the $c(s)$ distributions. A simple 1:1 association model with affinity (K_D) of 0.23 μM fits the data well (95% confidence interval: 0.14–0.40 μM). Thus, the B4.2.3 recombinant TCR interacts with P18-I10/H2-D^d with high affinity, in two distinct biophysical assays, consistent with the high peptide sensitivity of the T-cell hybridoma in functional assays^{16,17}.

TCR uses plasticity in the CDR3 loops to recognize pMHC. To elucidate the details of the ligand/receptor interaction, we determined the crystal structures of both free and p/MHC-bound states of the B4.2.3 TCR. The unliganded TCR crystallized in the P3₁ space group, with three heterodimers in the asymmetric unit (data collection and refinement statistics are provided in Table 1). The P18-I10/H2-D^d/B4.2.3 complex formed crystals in the C2 space group and diffracted to 2.1 Å, revealing a structure with an overall orientation of the TCR on P18-I10/H2-D^d that conforms to previously elucidated general principles^{19–22} (Fig. 2a). The germline-encoded CDR1 and CDR2 loops of the TCR α -chain are positioned towards the C-terminal half of the H2-D^d $\alpha 2$ helix, resulting in a diagonal orientation mode (Fig. 2b). The resulting crossing angle calculated as described²² is 30°, within the range observed for the majority of stimulatory TCR/MHC complexes (22°–87°; ref. 22). The shape complementarity index²³ of the interface is 0.71 (1.0 is a perfect match), and is among the highest observed for any TCR/MHC complex²². A summary of the interactions between selected residues of the CDRs with the MHC $\alpha 1$ and $\alpha 2$ helices and peptide is shown in Fig. 2c. While α - and β -subunits contribute almost equally to the 1,771 Å² area of interaction between B4.2.3 and H2-D^d (calculated without peptide), nine of ten hydrogen bonds at the interface are provided by the β -chain CDRs. Thus, this pMHC/TCR interface is dominated by V β interactions within the broad range observed for many different pMHC/TCR complexes²².

Superposition of the α - and β -chains of the liganded B4.2.3 TCR with their unliganded counterparts reveals marked changes in the disposition of the CDR3 α and CDR3 β loops, with little alteration discernible in CDR1 and CDR2 or in the C domains (Supplementary Fig. 1a–d) as observed in other TCRs^{22,24}. In the structures examined here, CDR3 α , spanning Ala95 to Lys102, undergoes a large conformational change upon ligand binding, in particular a 9.1 Å displacement of the C α atom of Asp99 of the first molecule in the asymmetric unit of the unliganded TCR compared to the same atom in the liganded TCR (Supplementary

Fig. 1b). The movement projects the CDR3 α loop into the peptide-binding groove, and allows interactions of the Phe97 side chain with the peptide backbone of Gly2 and Gly4. This is illustrated by a 9.2 Å displacement of the C ϵ atom of the Phe97 side chain from the free to bound form. CDR3 β , from Ser92 to Val99, is displaced inwards on ligand binding by 3.1 Å as measured at the C α of His96. Thus, the X-ray structures indicate large movements of the CDR3 α and - β loops upon p/MHC engagement that are critical for achieving a highly complementary interface. The extensive interface and hydrogen-bonding network between the α - and β -CDR domains with the P18-I10 peptide suggests an enthalpic compensation for the apparent entropic loss due to loop rearrangement and provide a structural basis for the measured high affinity of the interaction, as demonstrated both functionally and biochemically.

Increased dynamics in regions of the TCR β -chain in solution.

To gain insight into the dynamics of the B4.2.3 TCR in solution in both its free and P18-I10/H2-D^d-bound states, we prepared TCR samples for NMR labelled at the β -chain alone by *in vitro* assembly of unlabelled α -chain with triple-labelled (²H,¹³C,¹⁵N) or AILV side-chain methyl-labelled β -chain. The resulting proteins showed well-dispersed spectra, indicating stable, properly

conformed monomeric TCR, free of aggregation or degradation (Fig. 3a and Supplementary Fig. 2).

Previous studies have established strategies for obtaining NMR assignments of TCR backbone atoms using TROSY-based methods under extensive perdeuteration of the α and β -chains^{25,26}. Here we employed a multipronged approach for assignment and cross-validation of both backbone amide and side-chain methyl resonances of isotopically labelled β -chain TCR samples (outlined in Supplementary Fig. 2). First, backbone amide chemical shifts in the 2D ¹H-¹⁵N TROSY-HSQC were assigned sequentially utilizing a combination of three-dimensional (3D) HNCA, 3D HN(CA)CB and 3D HNCO experiments recorded on a triple-labelled sample. Second, Ile ¹³C δ 1, Leu ¹³C δ 1/¹³C δ 2, Val ¹³C γ 1/¹³C γ 2 chemical shift assignments were obtained from 3D HMCM[CG]CBCA methyl out-and-back experiments²⁷ recorded on a selectively methyl-labelled sample²⁸ (Supplementary Fig. 3). Backbone amide assignments obtained using the J-correlated experiments were validated by acquiring amide-to-amide NOEs in TROSY-based 3D H_N-NH_N nuclear Overhauser enhancement spectroscopy (NOESY) experiments, while side-chain methyl assignments were validated with NOE connectivities obtained from 3D H_M-C_MH_M and 3D C_M-C_MH_M SOFAST NOESY experiments²⁹. Close comparison of the NOE crosspeak intensities to their corresponding distances in the X-ray structure further permitted stereospecific disambiguation of the geminal Leu

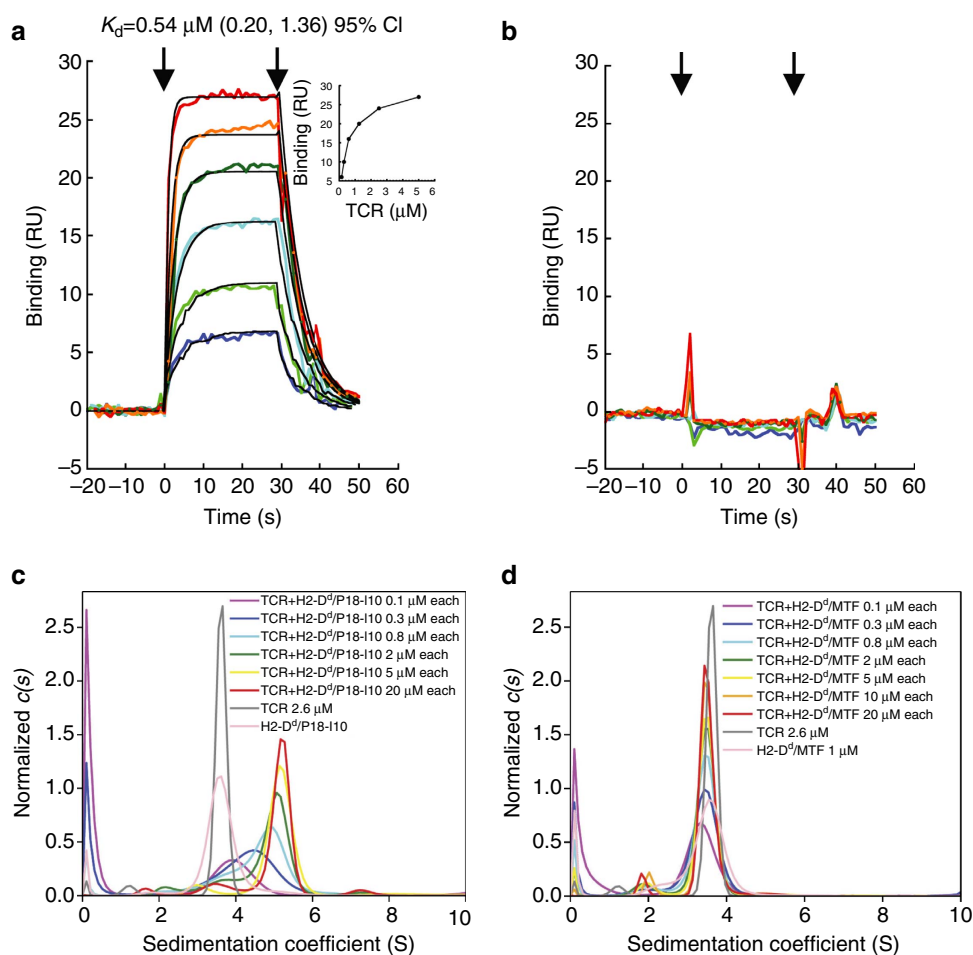


Figure 1 | TCR binds pMHC with high affinity and peptide specificity. (a,b) SPR analyses of B4.2.3 binding to P18-I10/H2-D^d (a) or MTF/H2-D^d (b). B4.2.3 was offered to immobilized P18-I10/H2-D^d complexes at concentrations of 0.16, 0.32, 0.62, 1.25, 2.5 and 5.0 μ M and data were analysed as detailed in the Methods. Inset to a shows binding isotherm with indicated fitted parameters in the top of the plot. (c,d) Sedimentation velocity analytical ultracentrifugation (SV-AUC) analyses of interaction of B4.2.3 TCR with P18-I10/H2-D^d (c) or with MTF/H2-D^d (d). Centrifugation and analysis are described in the Methods.

Table 1 | Data collection and refinement statistics.

	P18-I10/H2-D ^d /B4.2.3	B4.2.3 TCR free
Data collection		
Space group	C2	P3 ₁
Cell dimensions		
<i>a</i> , <i>b</i> , <i>c</i> (Å)	210.11, 51.32, 93.74	96.11, 96.11, 167.58
α , β , γ (°)	90.00, 97.14, 90.00	90.00, 90.00, 120.00
Resolution (Å)	29.8-2.1 (2.2-2.1)*	48.1-3.00 (3.1-3.0)*
<i>R</i> _{merge} (%) [†]	8.2 (33.2)*	13.1 (48.2)*
<i>I</i> / σ (<i>I</i>)	16.3 (2.2)*	12.6 (1.8)
Completeness (%)	97.8 (80.1)*	94.4 (65.3)*
Redundancy	6.2 (2.6)*	5.4 (3.8)*
Estimated twin fraction/ <i>law</i> [‡]	0.0/(none)	0.458/(h,-h-k,-l)
Refinement		
Resolution (Å)	29.8-2.1 (2.2-2.1)*	48.0-3.0 (3.1-3.0)*
No. of reflections (unique)	57,154	32,680
<i>R</i> _{work} / <i>R</i> _{free} (%)	18.0 (23.2)*/22.0 (30.0)*	24.0 (39.3)*/26.8 (44.1)*
No. of atoms	7,027	10,062
Wilson B-factor	36.3	70.3
Average B-factor	52.0	91.3
R.m.s deviations		
Bond lengths (Å)	0.002	0.002
Bond angles (°)	0.66	0.80
Ramachandran favoured/outliers (%)	96.0/0.8	96.0/0.2
PDB code	5IVX	5IWI

*Asterisked numbers correspond to the last resolution shell.

[†] $R_{\text{merge}} = \sum_i \sum_h |I_i(h) - \langle I(h) \rangle| / \sum_i \sum_h I_i(h)$, where $I_i(h)$ and $\langle I(h) \rangle$ are the *i*th and mean measurement of the intensity of reflection *h*.

[‡]A pseudo-merohedral twin fraction was estimated by Xtriage in PHENIX.

[§] $R_{\text{work}} = \sum_h |F_{\text{obs}}(h) - |F_{\text{calc}}(h)|| / \sum_h |F_{\text{obs}}(h)|$, where $F_{\text{obs}}(h)$ and $F_{\text{calc}}(h)$ are the observed and calculated structure factors, respectively. No *I*/ σ (*I*) cutoff was applied.

^{||} R_{free} is the *R* value obtained for a test set of reflections consisting of a randomly selected 5% subset of the data set excluded from refinement.

¹³C δ 1/¹³C δ 2 and Val ¹³C γ 1/¹³C γ 2 resonances. Finally, the combined backbone amide and side-chain methyl assignments were cross-validated using NOEs obtained from 3D H_N-C_MH_M and 3D C_M-NH_N SOFAST NOESY experiments²⁹. This approach allowed us to achieve backbone amide assignments for 90% of non-Pro residues and side-chain methyl assignment of 100% Ile δ 1, Leu δ 1/ δ 2, Val γ 1/ γ 2 and Ala β methyls for β -chain labelled TCR. Examples of our sequential assignment and NOESY-based cross-validation strategy for two selected regions of the β -chain are presented in Supplementary Figs 4 and 5. Thus, with the addition of complete, stereospecific assignments of methyl groups to our backbone assignments we obtained a complementary network of probes towards mapping dynamics of the TCR β -chain in solution.

The backbone assignments and NOE connectivity patterns further confirm the structural features of the TCR β -chain, including the identification of all conserved Ig domain disulfide bonds in an oxidized form as evidenced by the ¹³C α and ¹³C β chemical shifts of the four Cys residues (22, 90 in V β and 141, 202 in C β), as well as the observation of a single peak for all residues in the vicinity of the disulfides. Resonances from several residues within the β -chain CDR loops, CC' loop and FG loop (Supplementary Fig. 6) were absent in the TROSY spectra, likely due to conformational exchange line-broadening, suggesting the sampling of alternative environments on a μ s–ms timescale. This is consistent with the multiple crystallographic conformations observed for the same residues among the three TCR molecules in the asymmetric unit (Supplementary Fig. 1d).

The NMR backbone chemical shifts are highly sensitive probes of the local environment and secondary structure of the molecule. On the basis of the assignments of backbone ¹H, ¹⁵N^H, ¹³C α , ¹³C β and ¹³CO atoms, we used TALOS-N³⁰ to calculate the secondary structure index and found these predictions to be in excellent agreement with the DSSP³¹ annotation of our X-ray structure of the free TCR (Fig. 3c,d). When provided with

near-complete assignments, the detail of structural information contained in the chemical shifts analysis is highlighted by the robust prediction of the boundaries for the H3 and H4 α -helices in the C β domain, as well as the 3₁₀ helical segment (residues 113–115) located in the linker between V β and C β (shown as red bars in Fig. 3c, and coloured red in the diagram of Fig. 3d). The chemical shift-derived order parameter (RCI-S²), expressed in the range 0–1 with 0 indicating a random coil and 1 a fully ordered backbone structure, further reveals regions of increased disorder. As opposed to the more detailed model-free order parameters³² derived from fitting ¹⁵N relaxation rates and ¹⁵N-{¹H} NOE ratios that probe ps–ns timescale motions directly, this analysis is based on a statistical comparison of backbone chemical shifts with database values for random coils using an empirical formula parameterized by comparison to molecular dynamics simulations³³. Among regions of the TCR β -chain (lower plot in Fig. 3c), the β ₂– β ₃ loop (residues 13–17) and the β ₇– β ₈ loop (residues 68–72), not directly involved in p/MHC binding, as well as the CDR1 and CDR3 loops in the V β domain, all show decreased order parameter values with correspondingly increased crystallographic B-factors. The most unstructured region of the β -chain of the TCR in solution is the FG loop located in C β (residues 206–225), with RCI-S² values systematically below 0.75 for most residues and as low as 0.5 for Gly218. In contrast, the CC' loop (residues 157–166) shows only a minor reduction in backbone rigidity, with values in the range 0.8–0.9. However, the CC' loop may still undergo dynamic motions at a longer time scale window (μ s–ms), as suggested by the missing resonances for three amides in that region due to conformational exchange line-broadening or increased solvent exchange rates.

β -chain residues involved in the α/β -interface in solution. To characterize the α/β -interface of the B4.2.3 TCR in solution, we

utilized a TROSY-based cross-saturation transfer experiment³⁴ in which TCR was prepared with ¹⁵N, ²H-labelled β -chain and unlabelled (protonated) α -chain. Here selective irradiation of the aliphatic protons of the α -chain is expected to transfer to β -chain amides located at the interface with the α -chain through cross-relaxation. Peak intensity ratio analysis of β -chain amide resonances from saturated relative to non-saturated control experiments revealed cross-saturation transfer effects occurring from the α -chain to β -chain along discrete surfaces. These include a patch of residues on V β near the α/β interface (Gly41, Leu42, Gln43, Cys90, Phe101) and a more extended surface area on C β that includes residues near the H3/H4 helix regions (Ala137, Val140, Arg187, Val188; Fig. 4a,b). Importantly, β -chain residues distal from the α/β interface are not affected by α -chain saturation as expected (Fig. 4a,b). Mapping of affected β -chain residues on the X-ray structure of free B4.2.3 TCR suggests that the α/β -interface in solution is in good agreement with the crystallographic interface, and is dominated primarily by contacts between the constant domains (Fig. 4b). These NMR data are consistent with analysis of the X-ray structures of the TCR, which reveal that the C α /C β interface has nearly twice the surface area as that of V α /V β (1216 versus 698 Å²). Examination of a number of different TCR X-ray structures indicates that this is a generally observed phenomenon.

NMR reveals pMHC-binding effects on the TCR β -chain domain.

The completeness of the backbone assignments of unliganded TCR β -chain (Fig. 3a) allowed us to probe local conformational

changes upon binding to its p/MHC ligand. The complex between the TCR ectodomains and P18-I10/H2-D^d is 94.7 kDa and is therefore difficult to characterize by standard NMR methods. Here the use of extensive deuteration of side-chain protons to improve ¹³C relaxation and the application of TROSY methods at high magnetic fields to improve ¹⁵N relaxation allowed us to obtain high-quality NMR spectra of the bound state at room temperature (Fig. 3b). In agreement with the previous SPR and AUC measurements (Fig. 1b,c), B4.2.3 TCR formed a tight complex with P18-I10/H-2D^d under the NMR sample conditions. The exchange between free and bound states of the TCR was slow on the chemical shift timescale, as indicated by a single set of peaks for the complex, with large chemical shift changes relative to the free state (up to 0.5 p.p.m. when scaled relative to the ¹H field, as shown along the β -chain sequence in Fig. 5c). Analysis of the changes in peak positions and intensities revealed two types of effects on the TCR β -chain amide resonances: (1) chemical shift perturbations (Fig. 5c, black bars), indicating a change in the local magnetic environment and (2) conformational exchange-induced line-broadening in the bound state (Fig. 5c, red bars), suggesting a perturbation in μ s–ms timescale dynamics or increased solvent exchange rates. Several of the observed chemical shift changes correlate with the displacement of residues in V β domain loops seen in the X-ray structures, such as Ser27 in CDR1 β , Asp52 in CDR2 β and several residues in CDR3 β (Fig. 5a, right panel). In addition, the peak intensities of residues 49–53 located in the CDR2 β loop were significantly attenuated in the bound form (Fig. 5c). Notably, residues 100–105 located at

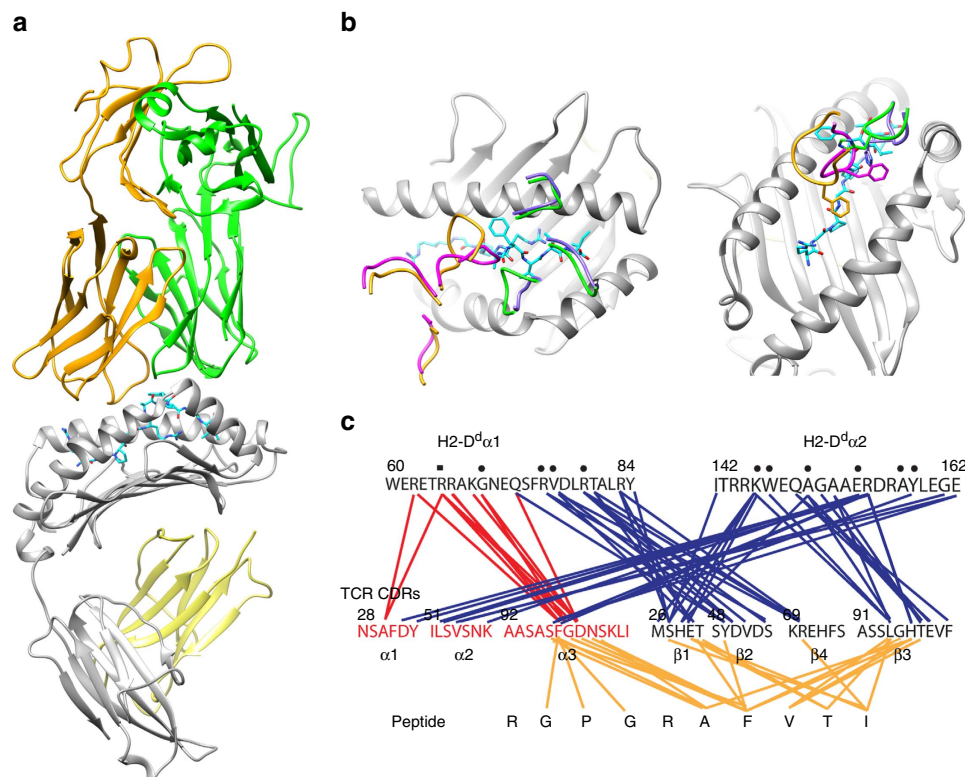


Figure 2 | X-ray structure of the complex between TCR and pMHC. (a) Ribbon diagram shows the B4.2.3 $\alpha\beta$ TCR (above) focusing its CDR loops on the P18-I10/H2-D^d/ β 2m complex (below). TCR α -chain is gold, β -chain is green, peptide (shown in stick representation) is cyan, MHC heavy chain is grey and β 2m light chain is yellow. **(b)** enlargement of view of MHC-binding groove and bound peptide. MHC and peptide coloured as in **a**, CDRs of unliganded TCR α -chain are shown in gold, β -chain in green; of liganded TCR α -chains are magenta and of β -chains are purple. The right hand panel (an $\sim 45^\circ$ counterclockwise rotation of the left) highlights the large movement of CDR3 α residue Phe97. The crossing angle of the TCR on the pMHC, calculated according to Rudolph *et al.*¹⁹, is 30° . **(c)** Contact map illustrates interactions between TCR and peptide residues (in gold), and between TCR and MHC helices (in red and blue). Data collection and refinement statistics are provided in Table 1. Structural changes between the free and bound forms of the TCR are outlined in Supplementary Fig. 1.

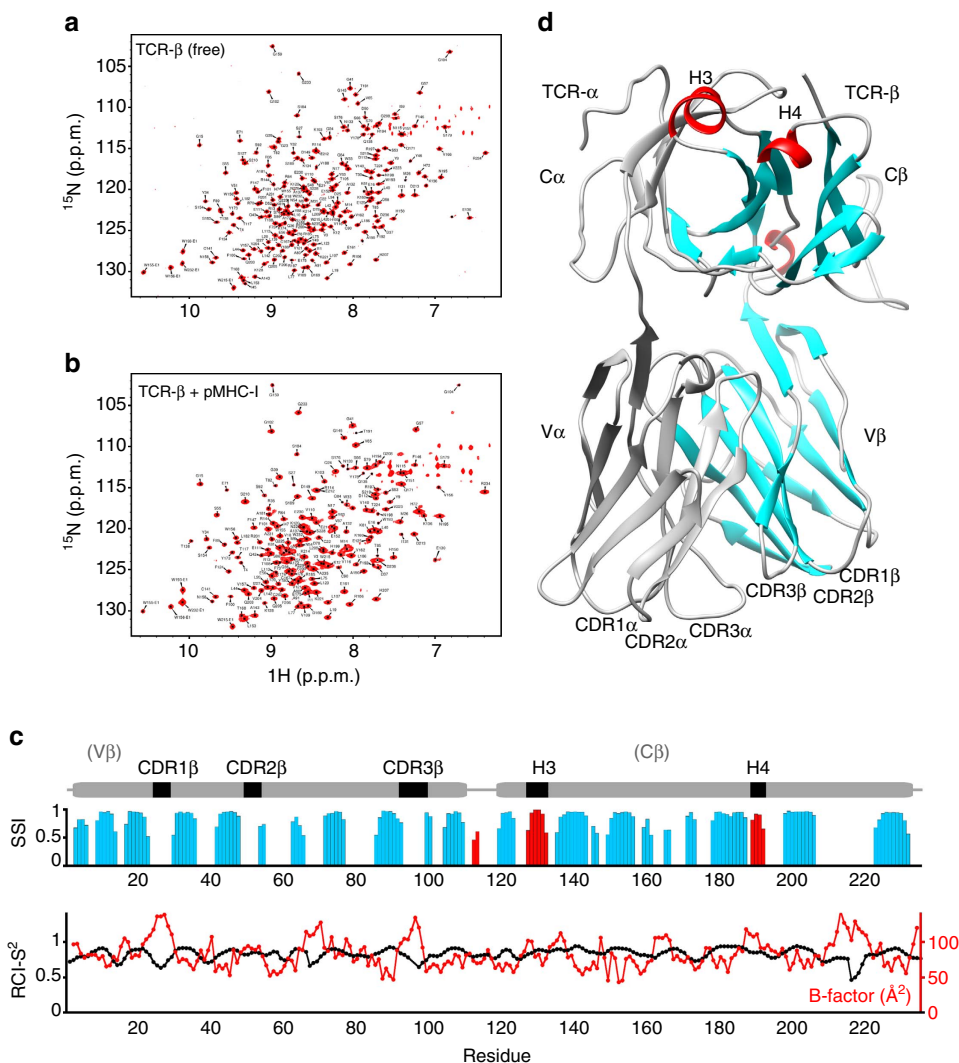


Figure 3 | NMR characterization of a TCR and its pMHC complex. (a) amide 2D ^1H - ^{15}N TROSY-HSQC (900 MHz ^1H field strength) of a 47.6 kDa disulfide-linked B4.2.3 TCR- $\alpha\beta$ heterodimer that is ^{15}N , ^{13}C , ^2H -labelled at the β -chain with 100% back exchanged protons at the amide positions during *in vitro* refolding. The α -chain of the molecule is unlabelled. (b) Spectra of the 94.7 kDa 1:1 high-affinity complex of B4.2.3 TCR with P18-I10/H2-D^d/ β 2m ($K_D \sim 0.5 \mu\text{M}$). To improve signal-to-noise for the larger complex, a 16-fold increased number of scans was used when acquiring the data. (c) TALOS-N secondary structure index (SSI) derived from the combined ^1H , ^{15}N and ^{13}C chemical shifts along the TCR β -chain sequence. Blue bars of increasing height indicate regions with high β -sheet propensity based on chemical shifts, while red bars correspond to regions with a strong α -helical signature. Gaps correspond to predicted loop regions. The random coil index order parameter (RCI-S²) is also shown, with values < 0.75 further indicating unstructured coil regions in solution. As a comparison, the crystallographic B-factors of amide N atoms in the X-ray structure of the free TCR β -chain are also shown in red. The domain diagram of the β -chain is shown on the top of the plot as guide. (d) X-ray structure of the disulfide-linked TCR- $\alpha\beta$ heterodimer in the free form, showing the unlabelled α -chain (grey) and labelled β -chain, highlighting the CDRs in the V α , V β domains and short helical regions in the C β domain (H3, H4). The TALOS-N-derived secondary structure based on the NMR chemical shifts is also shown on the structure with same colours as in c and grey for loops, with cartoons drawn according to the DSSP annotation of the PDB entry. CDR, complementarity-determining regions. H3, H4 C β domain α -helices 3 and 4.

the V α /V β domain interface also showed above average chemical shift perturbations (Fig. 5c), indicating that p/MHC-binding-induced conformational changes in the V domains are not restricted to the CDR loops.

Strikingly, the NMR data revealed long-range effects on the C β of the TCR, at the membrane proximal face of the molecule. These changes are highly localized, and cluster near the H3 helix of C β (Glu130, Thr138) at the interface with the C α domain (Fig. 5c). In addition to the shifted peaks, the resonances of several amides in the region were significantly attenuated in the bound form, suggesting further changes in dynamics at or near the H3 and H4 regions. These include Ser127, Lys134, Ser183,

Arg187 and Val188, all located at the interface with C α (highlighted with red asterisks in Fig. 5c and shown as red bars in Fig. 5a, left panel). Since amide chemical shifts can be influenced by the local backbone conformation and hydrogen-bonding geometry, these results point to discrete structural changes in the H3 and H4 regions of the β -chain of the B4.2.3 TCR upon p/MHC binding. The structural changes observed in solution in the region of the H3 helix prompted us to compare available liganded and unliganded X-ray structures of MHC-I-restricted TCR¹⁹. Although there are a limited number of X-ray structures of pMHC-I/TCR complexes for which comparison with the unliganded TCR may be made, careful

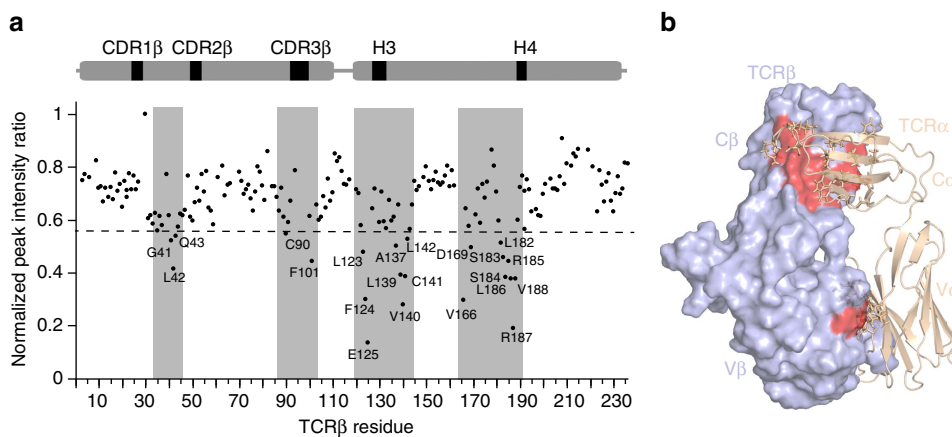


Figure 4 | Cross-saturation transfer NMR elucidates intermolecular contacts of the $\alpha\beta$ -TCR in solution. (a) Cross-saturation transfer experiment performed on free U- ^{15}N , ^2H] β -chain-labelled and unlabelled (protonated) α -chain B4.2.3 TCR acquired at 800 MHz, 25 °C. Experimental details are outlined in Methods. The plot shows the normalized peak intensity ratio ($I_{\text{saturated}}/I_{\text{non-saturated}}$) as a function of TCR β residue. The dashed line signifies 1 s.d. of chemical shift change from the average. (b) Mapping of TCR β residues affected upon cross-saturation transfer (shown in red) on the X-ray structure of the B4.2.3 TCR with β -chain shown as a surface display (light blue) and α -chain shown as cartoon (wheat) with side chains of α -chain residues near the α/β interface shown as sticks.

inspection of 10 pairs of superposed structures in the H3 helix revealed no differences in backbone configuration and no consistent changes in side-chain orientations. Notably, the H3 helix does not participate in any crystallographic contacts in our study.

We additionally carried out NMR titrations of B4.2.3 TCR selectively methyl-labelled in its β -chain with p/MHC to complement our amide-mapping results. Methyl groups, such as Ala C β , Ile C δ 1, Leu C δ 1/C δ 2 and Val C γ 1/C γ 2, are highly sensitive probes of side-chain packing within hydrophobic cores of proteins and are less influenced by the molecular size of the system under investigation because of their favourable relaxation properties³⁵. The quality of the 2D ^1H - ^{13}C HMQC spectrum of fully assigned AILV-methyl labelled β -chain TCR, refolded with unlabelled α -chain (Fig. 6a, red), allowed us to probe dynamic changes that occur in the P18-I10/H2-D^d-bound state (Fig. 6b, blue). To transfer the methyl assignments to the bound state, we recorded a 3D $\text{H}_M\text{-C}_M\text{H}_M$ SOFAST NOESY data set on the P18-I10/H2-D^d/B4.2.3 complex and compared it to a similar experiment recorded for the free state (Supplementary Fig. 4e). Similar to the ^{15}N -TROSY results obtained for β -chain backbone amides (Fig. 5c), we measured highly reproducible slow-timescale changes in peak positions (Fig. 6a, arrows) and intensities (Fig. 6a, asterisks). In particular, we observed significant effects for the methyls of Leu42, Ile45 and Ile47, located on the β -strand of the V β domain leading to CDR2 β , as well as Val51 located on CDR2 β (Fig. 6b, top panel). This corroborates the changes observed in the X-ray structure of the p/MHC-bound TCR relative to the apo structure (Supplementary Fig. 1). Smaller but statistically significant changes were also observed for the resonances of Leu75, Leu77 and Val87 located near the core of the V β domain (Fig. 6b, top panel). Likewise, the change in peak intensity between the free and bound states revealed effects: (1) near and on the CDRs including Val3, Ile47, Val51, Leu94, Val99; (2) near the interface between the V β and C β domains including Ala80, Val116; and (3) in the H3 and H4 helix regions including Ala132 and Ala190 (Fig. 6b, bottom panel, Fig. 6c).

Mutagenesis suggests a role for the TCR C β H3 helix. Our observation that the resonances of residues in and near the C β H3 helix of the B4.2.3 TCR undergo significant changes in the bound

state led us to examine the functional role of this putative allosteric site in cell-surface expression and signalling. We targeted C β residues that demonstrate significant NMR effects, that is, Ser127, Glu130, Asn133, Lys134 and Thr138 (Fig. 5a,c). We examined single Ala substitution mutants of each of these residues for their effects on cell-surface expression when paired with the parental α -chain. As shown in Fig. 7a, Ala mutation of Glu130 or Thr138 abolishes cell-surface expression as shown by anti-V α 2 antibody staining that was indistinguishable from untransfected controls. Notably, Ala mutations at the same residues in soluble β -chain constructs result in inability to refold into functional TCR heterodimers *in vitro*, consistent with their placement in a critical region at the interface with the α -subunit of the TCR. The remaining three mutants show levels of surface expression identical to the parental receptor and were further analysed for p/MHC binding and TCR activation in stimulation assays. All three mutant transfectants show decreased interleukin (IL)-2 production when compared to the wild-type transfected cells with the Asn133 Ala mutant showing the greatest reduction (Fig. 7b). Comparison of the amount of IL-2 elicited by 1 μM peptide reveals a reduction from 587 ± 45 pg in the parental transfectant to only 8 ± 4 pg in the Asn133A mutant, corresponding to a 98% decrease in IL-2 levels. Similarly, at a 1 μM peptide dose, the Lys134A mutant shows a decrease of 84% from the wild-type IL-2 levels, while the Ser127A mutation exerts a less severe effect on IL-2 levels, revealing a reduction of only 34% compared to the wild type. The severely attenuated signalling by the Asn133A and Lys134A mutants is not caused by defects in antigen recognition as all three mutants bind P18-I10/H2-D^d tetramers with equal avidity and show the same rate of dissociation as the parental transfectant (Fig. 7c). These results emphasize the functional importance of TCR C β residues Asn133 and Lys134 in p/MHC-dependent signalling and highlight the role of Glu130 and Thr138 for correct assembly, association with the CD3 co-receptor and subsequent surface expression.

To examine further whether the Asn133A substitution affected the affinity of the mutant TCR for P18-I10/H2-D^d, or the stability of the TCR heterodimer itself, we prepared recombinant Asn133A TCR and compared it with the parental B4.2.3 TCR for binding to immobilized p/MHC in an SPR assay (Supplementary Fig. 7 and Supplementary Table 1). The thermal

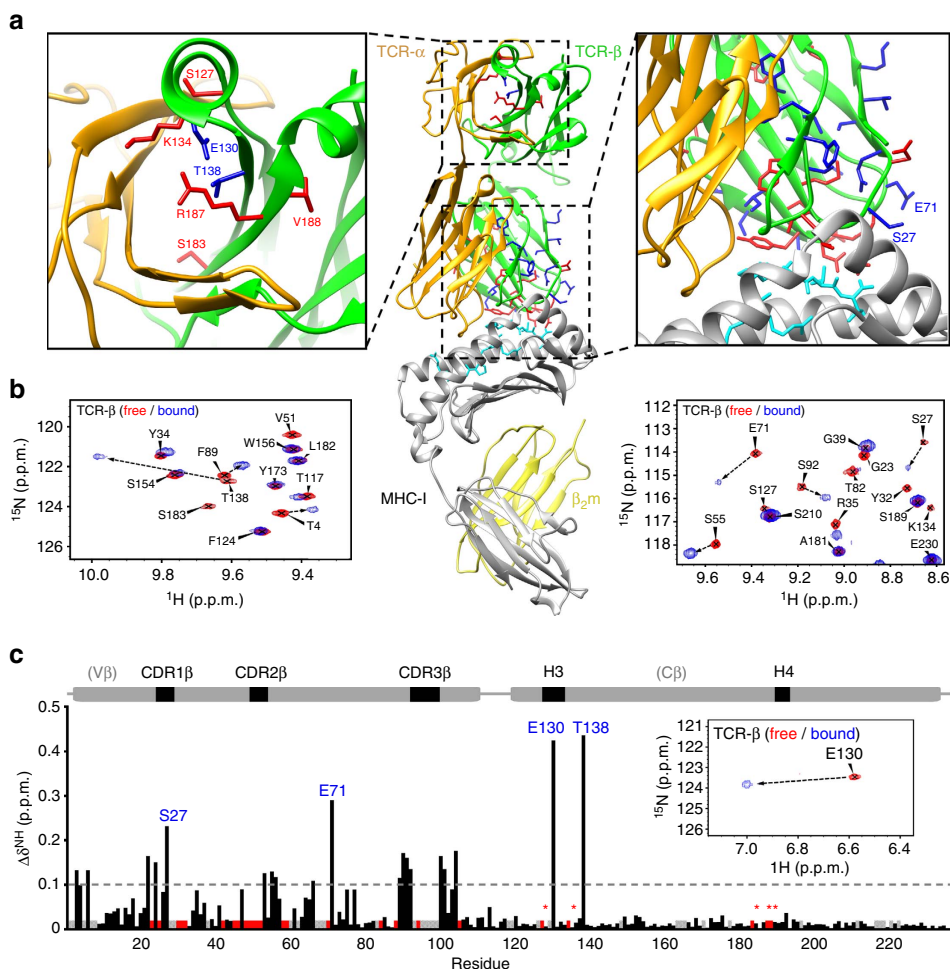


Figure 5 | pMHC-induced conformational changes on the TCR β -chain domains. (a) TCR β -chain residues with significant amide ^{15}N - ^1H TROSY-HSQC chemical shift changes upon MHC-I binding are shown as sticks on the C β and V β domains of the $\alpha\beta$ -TCR structure. Two types of observed changes are highlighted with different colours: residues with significantly attenuated resonances (>1 s.d. from the average) in the bound form are shown in red, while residues with significant chemical shift changes are in blue. In the middle panel, the tertiary structure of the B4.2.3 (beige/green)/H2-D^d (grey) complex is shown with $\beta_2\text{m}$ (yellow) and p18-110-bound peptide (cyan sticks). (b) Overlays of representative regions from TROSY-HSQC spectra recorded in the free (red) and 1:1 MHC-bound (blue) state of the TCR, using two samples that were ^{15}N , ^2H , ^{13}C -labelled at the β -chain and unlabelled α -chain (as shown in Fig. 3a,b). Pairs of peaks that correspond to the same residues in the free and bound forms are connected by dotted arrows. (c) Summary of combined $^{15}\text{N}/^1\text{H}$ chemical shift changes along the β -chain sequence, scaled relative to ^1H . The dashed line signifies 1 s.d. of combined chemical shift change from the average. Residues with significantly attenuated resonances in the bound form are shown as red bars, while unassigned and Pro residues are in grey. Red stars highlight C β domain resonances that disappear upon p/MHC binding, and that are also illustrated in the structure diagram above (a). The large chemical shift change observed for Glu130 upon p/MHC binding is highlighted in the inset.

stability of the mutated TCR was assessed using differential scanning fluorimetry, and was found to be identical to the parental protein (Supplementary Fig. 8). The SPR-binding curves, analysed both kinetically and at steady state, revealed little or no difference in the kinetic association or dissociation rate constants (k_a and k_d values) as well as the calculated or steady-state determined equilibrium constants (K_D values), indicating that the functional effect of the mutation is not the result of a p/MHC-binding defect, but rather reflects the putative allosteric site.

Discussion

A fundamental question in T-cell immunity is the mechanism by which p/MHC engagement by the TCR is relayed to the associated CD3 subunits to initiate intracellular signalling. Signal transduction likely occurs through ligand-induced conformational changes in the TCR constant domains, which are then

transmitted to the CD3 subunits^{15,36–38}. Such structural changes have been difficult to visualize crystallographically, because of the relatively low resolution typically seen for these regions in crystal structures. NMR offers an alternative approach to identify subtle changes in the local magnetic environment of proteins and can thus pinpoint sites undergoing conformational exchange in the NMR timescale. Several studies have used NMR to study the mechanism of p/MHC recognition by the TCR^{39,40}, or to explore the binding footprint of the CD3 co-receptor subunits. Early NMR studies found the interaction of CD3 $\delta\epsilon$ with TCR in solution too weak to detect significant chemical shift perturbations⁴¹. More recent work found that only a mixture of CD3 $\gamma\epsilon$ and CD3 $\delta\epsilon$ subunits produced detectable effects on the H3 and H4 helices of the TCR C β ²⁵, while a subsequent study reported weak but measurable perturbations in both C α and C β upon addition of CD3 $\delta\epsilon$ or CD3 $\gamma\epsilon$, respectively²⁶. On the cytoplasmic side, NMR studies have revealed lipid-sensitive

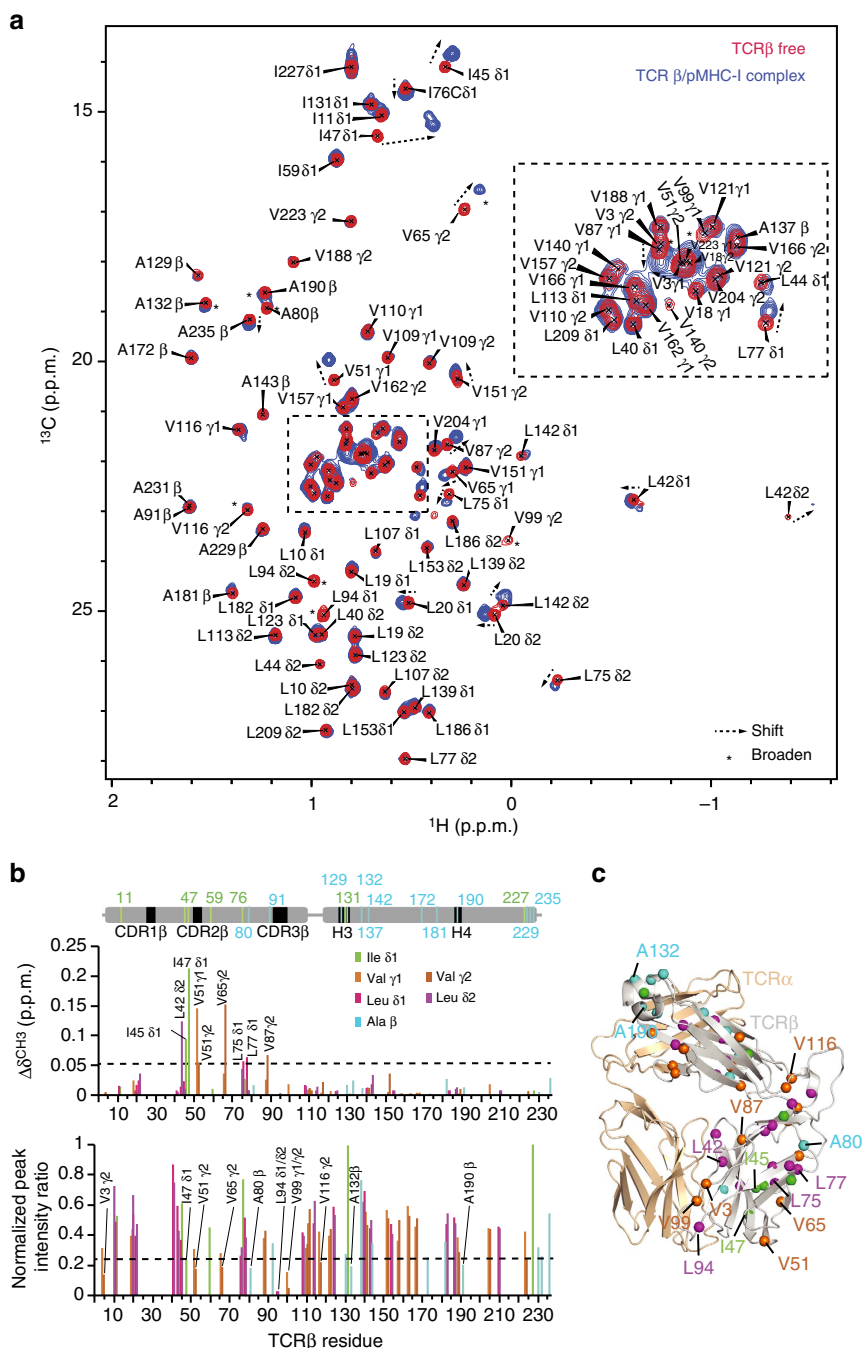


Figure 6 | Methyl probes of TCR and pMHC complex formation. (a) 2D ^1H - ^{13}C HMQC spectra of AILV ^{13}C -methyl labelled U- ^{15}N , ^2H β -chain B4.2.3 TCR in the free (red) and 1:1 P18-I10/H2-D d bound (blue) states acquired at 800 MHz, 25 $^\circ\text{C}$. Changes in chemical shift position are indicated with arrows, while changes in chemical shift intensity due to line broadening are indicated by asterisks. Stereo-specific chemical shift assignments are indicated.

Assignment of AILV-methyl chemical shifts is outlined in Supplementary Figs 2-5. (b) Plot of chemical shift deviation (CSD in p.p.m.; top) and normalized peak intensity ratio ($I_{\text{bound}}/I_{\text{free}}$; bottom) as a function of TCR β methyl residue number. The dashed line signifies 1 s.d. of combined chemical shift change from the average. Affected residues are indicated. (c) Mapping of Ala, Ile, Leu and Val methyl probes on the X-ray structure of B4.2.3 TCR with α -chain coloured wheat and β -chain coloured grey. Residues that are affected in either CSD or intensity ratio between the free and bound states are indicated.

conformational changes in the signalling domains of the CD3 $\zeta\zeta$ homodimer⁴² and the CD3 ϵ subunit³⁸.

Here we use NMR to elucidate changes in TCR dynamics upon binding to the p/MHC ligand. Using a complementary combination of backbone amide and side-chain methyl probes, we extensively map ligand-induced chemical shift perturbations along the TCR β -chain. Consistent with our X-ray structures of the free and p/MHC-bound forms of the receptor, the V β CDR

loops that directly engage the p/MHC ligand show large changes in our NMR spectra. In particular, we report significant chemical shift perturbations for the amide resonances of Ser27 on CDR1 β , Asp52 on CDR2 β and several CDR3 β residues, as well as the methyl resonances of Val51 on CDR2 β and Leu94, Val99 on the hypervariable loop region. Notably, we also observe significant NMR effects on sites located near the H3 and H4 helices of the C β domain, distal to the p/MHC recognition site. These include

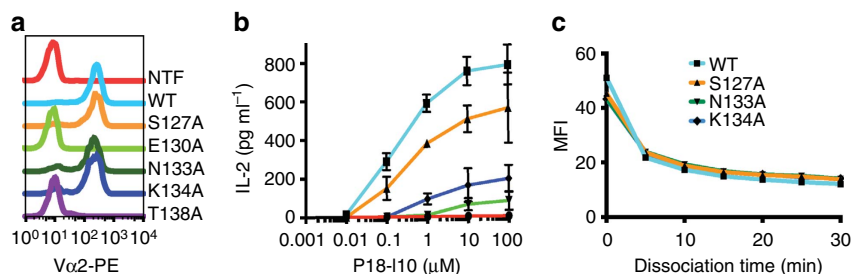


Figure 7 | Expression and function of parental and C β -mutant TCRs in transfectants of $\alpha\beta^-$ cells. (a) Staining of nontransfected (NTF), wild type (WT) and the indicated B4.2.3 TCR C β mutants with PE-conjugated anti-V α 2 antibody as analysed by flow cytometry. (b) IL-2 amounts in culture supernatants of nontransfected (NTF), wild type (WT) and the indicated B4.2.3 TCR C β mutants stimulated for 16 h with graded concentrations of P18-110 peptide in the presence of A20 cells. IL-2 levels were quantified by ELISA. (c) Dissociation of P18-110/H2-D^d tetramers from WT and mutant TCR expressing transfectants detected by flow cytometry at 5-min intervals ranging from 0 to 30 min. Error bars represent mean \pm s.d.

the amides of Glu130 and Thr138 and the methyls of Ala132 and Ala190. The importance of the H3 helix for signalling is further corroborated by functional data obtained for selected mutants that inhibit signalling without affecting the expression levels of the TCR, its stability or its ability to recognize the p/MHC.

The potential of TCR self-association having an impact on the observed chemical shift and intensity changes is ruled out by several lines of evidence. First, our AUC data are consistent with a fully monomeric TCR sample. Second, the ¹⁵N and ¹³C linewidths are consistent with a predominantly monomeric form of the heterodimer in solution, and remain very similar over a range of concentrations from 70 to 350 μ M. Finally, the NMR spectra show the same slow-exchange process and changes over a range of TCR concentrations from 70 to 250 μ M. These results conclusively support the view that the significant distal changes observed by NMR arise from an allosteric communication mechanism, as opposed to a secondary binding site or transient dimerization.

Close inspection of interactions near the H3 region in the crystal structures of the free and p/MHC-bound forms of the TCR suggests a possible explanation for the observed NMR chemical shift perturbations at this site. The interface between the C α and C β domains of the TCR is composed primarily of polar and charged residues that form a network of electrostatic interactions²². In particular, Tyr125 α in the unliganded TCR interacts with Asn133 β and Lys134 β in one of the three molecules in the asymmetric unit (Fig. 8a) and has long-range contacts with these residues in the other two molecules. However, a displacement of the C α domain upon p/MHC-binding promotes the formation of a Glu121 α -Lys134 β salt-bridge in the bound state (Fig. 8b). Notably, the side chains of Arg187 β and Asp142 α interact in both the free and the bound structures (Fig. 8a,b). These structural displacements are consistent with the measured chemical shift perturbations for the Glu130 β , Thr138 β and the broadening of the Lys134 β , Arg187 β backbone amide resonances (Fig. 5c), as well as the broadening of the Ala132 β (on H3), Ala190 β (on H4) methyl resonances (Fig. 6b). Thus, solution NMR mapping and X-ray structural data are consistent with a systematic reorganization of the C α /C β interface involving a remodelling of electrostatic interactions near the H3 and H4 regions of C β . Taken together, our results provide a link between p/MHC binding at the CDR loops and dynamic changes in the TCR C β domain that are critical for signalling⁴³.

The interface between the C α and the C β domains plays an essential role for the stability and assembly of the TCR heterodimer, as shown both *in vitro* and *in vivo* in a recent study⁴⁴. In accordance, residues at the C α /C β domain interface near the H3 helix are highly conserved across α - and β -chain sequences from different species, which could result from their

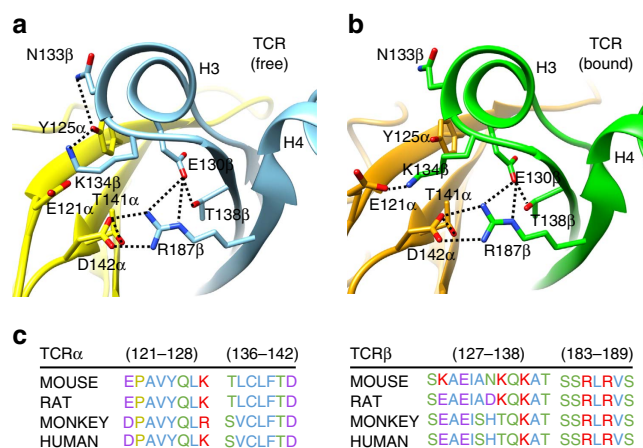


Figure 8 | Sequence conservation at the C α - and C β -domain interface near the H3 helix of the TCR. (a) Free and (b) bound X-ray structures of the B4.2.3 $\alpha\beta$ TCR dimer showing a network of electrostatic interactions (dashed lines) at the interface between the α - and β -subunit constant domains. The C α and C β domains are shown with yellow/beige and cyan/green in the free/bound structures, respectively. Functionally important residues identified by NMR to show significant changes upon MHC binding are highlighted on the structure. (c) Sequence conservation patterns within the same regions of the C α and C β domains as in a,b.

role in stabilizing the TCR itself as well as communicating an activation signal to CD3 (Fig. 8c). While Asn133 β and Lys134 β are not 100% conserved, residues with potential for hydrogen bond formation are retained at these positions, suggesting that the interface interactions with Tyr125 α and Glu121 α are crucial for TCR stability and CD3 signalling.

A plausible structural mechanism for the transmission of conformational changes from the CDRs to the C β distal sites is suggested by the observation of affected sites in the V β /C β linker region, in particular Val116 β , which shows significant line broadening in our NMR spectra. It is therefore conceivable that dynamically driven p/MHC-induced allosteric changes in the constant regions of the TCR, supported both by NMR data presented here and previous hydrogen/deuterium exchange experiments⁴⁵, could potentiate interactions with CD3 $\gamma\epsilon$ and $\delta\epsilon$, which, according to recent NMR studies, interact only weakly with the free TCR^{25,26}.

The role of the α -chain in mediating these structural changes cannot be directly addressed with the β -chain labelling scheme used here. However, similar effects on the α -chain structure are implied by the fact that most sites that undergo conformational

transitions are localized near the α/β -interface. This is consistent with an earlier crystallographic study of a human TCR that revealed extensive conformational rearrangement of the BC and DE turns on C α (ref. 46) as well as recent fluorescence⁴⁷ and hydrogen/deuterium exchange studies⁴⁵, which showed that binding of the cognate p/MHC ligand induces long-range effects on the C α A-B loop region. The structural basis of such changes at the TCR α/β -interface, and their impact on interactions with the CD3 co-receptor should be investigated in future studies.

Methods

Protein expression and purification. The expression and purification of P18-I10/H2-D^d was performed using standardized protocols^{48,49}. Briefly, cDNAs encoding the entire coding sequence of the B4.2.3 TCR α - and β -chains were amplified by RT-PCR from RNA isolated from the B4.2.3 hybridoma¹⁶. DNAs encoding the extracellular portions of the TCR chains up to, but not including, the membrane-proximal cysteine, were cloned into pET21b (Novagen) and then expressed in LB-broth at 37 °C after transformation of *Escherichia coli* BL21(DE3) (Novagen). (All reference to TCR V chain numbering is sequential beginning with the mature TCR chains). Following the strategy described by Boulter *et al.*⁵⁰ for human TCRs, an interchain disulfide was engineered between the constant domains of the TCR α - and β -chains by replacing Thr163 of C α and Ser167 of C β with Cys, and the unpaired Cys181 in the C β domain was mutated to Ala. TCR- α and β were expressed separately as inclusion bodies, solubilized in 6 M guanidine-HCl/0.1 mM dithiothreitol (DTT), mixed together and refolded and purified as for P18-I10/H2-D^d.

Crystallization and structure determination. Equal volumes of purified B4.2.3 TCR and P18-I10/H2-D^d, each at 7 mg ml⁻¹, were mixed and allowed to incubate for 30 min at room temperature before crystallization trials. Diffraction quality crystals of the complex were grown in hanging drops at 18 °C in 15% PEG 3350, 0.15 M MgCl₂, cryoprotected in 15% ethylene glycol in 20% PEG 3350, 0.2 M MgCl₂ and frozen in liquid nitrogen. Crystals of free B4.2.3 were grown in hanging drops at 18 °C in 16% PEG 4000, 0.1 M TRIS pH 8.8, 0.2 M MgCl₂, cryoprotected in 15% ethylene glycol in the crystallization solution and frozen in liquid nitrogen. Diffraction data were collected at the National Synchrotron Light Source, Brookhaven, on beamline X29 equipped with an ADSC Q315 detector. Data were indexed and scaled with HKL2000 (ref. 51). Data collection and refinement statistics are reported in Table 1. Molecular replacement solutions were readily found for the TCR and H2-D^d with Phaser⁵² using the murine AHIII 12.2 TCR (PDB 1LP9) and the previously determined structure of H2-D^d (PDB 1DDH) as search models. For the unliganded B4.2.3 TCR, the best solution was in the P3₁ space group, but analysis of the data by Xtriage indicated pseudo-merohedral twinning with a twin fraction of 0.45, necessitating the application of twin law h, -h-k, -l during refinement in Phenix⁵³. This improved R-free to 0.268 along with better electron density. The electron density map of the third heterodimer was less clear compared to the other two suggesting partial occupancy. The occupancy of chains E and F was adjusted to 0.6. Further manual increase in geometrical restraints led to improved refinement. All structure refinements were carried out in Phenix⁵³ and validated with Molprobity⁵⁴. Structure graphics were prepared with Pymol (Schrodinger, LLC) and Chimera⁵⁵.

Surface plasmon resonance. BirA-tagged H2-D^d refolded with either the P18-I10 peptide or with a motif (MTF) peptide (AGPARAAAL) was biotinylated using BirA ligase and biotin (Avidity, LLC) according to the manufacturer's instructions. Approximately 650 resonance units of biotinylated H2-D^d was captured on a streptavidin sensor chip SA (GE Healthcare) and soluble TCR, either the parental B4.2.3 or with mutated CDR3 residues, at various concentrations, was injected over this surface at 25 °C. The sensorgrams were corrected for binding to control surfaces and fitted to the Langmuir binding equation for a 1:1 interaction model to determine dissociation constants (K_D) using the BIAevaluation 3.2 software or EVILFIT⁵⁶. For the binding experiments described in Supplementary Fig. 7 and summarized in Supplementary Table 1, a BIAcore T200 instrument was employed, and data were fit to kinetic and steady-state models using T200 evaluation software 3.0. The same data analysed with EVILFIT gave similar results.

Analytical ultracentrifugation. Analytical ultracentrifugation experiments were conducted in an XL-I analytical ultracentrifuge (Beckman Coulter, Indianapolis, IN) with an An50Ti rotor, following standardized protocols⁵⁷. Briefly, protein samples were prepared by dilution of concentrated stocks with the working buffer (25 mM of HEPES, pH 7.2, 150 mM NaCl). Individual protein molecules were characterized in the primary AUC experiments with a concentration series of 1–10 μ M. For the binary interactions, equimolar mixtures of B4.2.3TCR + P18-I10/H2-D^d or B4.2.3TCR + MTF/H2-D^d were prepared in a concentration series of 0.1–20 μ M. The samples were loaded into standard

double-sector charcoal-filled epon centrepieces with 12- or 3-mm path length and sapphire windows. The sedimentation process of the protein molecules was monitored using both Rayleigh interference and ultraviolet absorbance at 280 nm detection at 20 °C and 50,000 r.p.m. The acquired sedimentation velocity data were analysed with SEDFIT using the $c(s)$ sedimentation coefficient distribution approach⁵⁸, from which the signal weighted-average sedimentation coefficient (s_w) was obtained by integration. To determine the binding affinity, the isotherm of s_w as a function of macromolecular concentrations was fitted with the 1:1 hetero-dimerization model:

$$s_w(c_{A,\text{tot}}, c_{B,\text{tot}}) = \frac{c_A \epsilon_A s_A + c_B \epsilon_B s_B + c_A c_B K_{AB} (\epsilon_A + \epsilon_B) s_{AB}}{c_{A,\text{tot}} \epsilon_A + c_{B,\text{tot}} \epsilon_B}$$

where $c_{A,\text{tot}}$ and $c_{B,\text{tot}}$ denote the total molar concentration for A and B, c indicates the molar concentration of the free component, s denotes the sedimentation coefficient, ϵ denotes the extinction coefficient and K_{AB} ($K_D = 1/K_{AB}$) is the equilibrium association-binding constant. In the analysis, s_A and s_B were fixed at the experimentally determined values, while K_{AB} and s_{AB} were subject to optimization through nonlinear regression. The error surface projection analysis was exploited to determine the error intervals of the best-fit K_D values at a 95% confidence level.

NMR sample preparation and backbone assignments. U-[¹⁵N, ¹³C, ²H]-labelled β -chain B4.2.3 TCR samples for NMR were prepared by substituting the TCR β -chain growth medium with M9 minimal media in ²H₂O containing 2 g l⁻¹ ¹³C, ²H glucose (Sigma #552151) and 1 g l⁻¹ ¹⁵NH₄Cl. To promote overexpression, we added 1 g l⁻¹ ²H, ¹⁵N, ¹³C ISOGRO (Sigma #608297). The purified β -chain inclusion bodies were refolded with unlabelled α -chain. The protein sample-refolding conditions in aqueous buffer enabled complete exchange of the amide ²H with ¹H atoms. All NMR experiments were recorded at a temperature of 25 °C using 600, 700, 800 and 900 MHz cryoprobe-equipped Bruker and Varian spectrometers. To assign the backbone resonances, we used an array of TROSY-readout triple-resonance assignment experiments (HNCO, HN(CA)CO, HNCA and HN(CA)CB), recorded at 600 MHz, supplemented with a 3D NOESY-[¹H, ¹⁵N, ¹H]-ZQ-TROSY experiment⁵⁹, recorded at 800 MHz. We used standard (incrementally sampled), non-constant-time 3D experiments with optimized INEPT transfer delays and shorter acquisition times in the indirect dimensions (30 ms in ¹⁵N, 20 ms in ¹³CO and 10/5 ms in ¹³C_z β) with a mixed-time ¹⁵N evolution period⁶⁰ when needed (HNCA and HN(CA)CB). TCR/MHC complexes for NMR were prepared by mixing β -chain-labelled B4.2.3 $\alpha\beta$ TCR and P18-I10/H2-D^d at 1:1 molar ratios, followed by incubation at room temperature for 1 h. Pure TCR/pMHC complexes were isolated by size exclusion chromatography using a Superdex 200 increase 10/300 GL column (GE Healthcare #28-9909-44) with flow rate 0.5 ml min⁻¹ in 150 mM NaCl, 25 mM Tris pH 8.0. TCR/pMHC complexes prepared for NMR by size exclusion chromatography isolation and by titration were indistinguishable in terms of the measured chemical shift changes. In contrast, control-binding experiments using the non-cognate ligand (H2-D^d) displaying the motif peptide AGPARAAAL) showed no effects on the NMR spectra of the TCR. For NMR-binding experiments U-[¹⁵N, ¹³C, ²H]-labelled β -chain B4.2.3 TCR was mixed with unlabelled P18-I10/H2-D^d p/MHC at a 1:1 molar ratio in identical buffer conditions (25 mM HEPES pH 7.3, 50 mM NaCl, 0.01% NaN₃, 1 U Roche protease inhibitor). The final concentration of the complex sample was 250 μ M. The free state assignments of the TCR β -chain were transferred to the 94.7 kDa B4.2.3/P18-I10/H2-D^d complex sample, by closely mapping to the nearest TROSY-HSQC resonances and further NOE-based validation and Ala mutagenesis for selected peaks. All spectra were processed with NMRPipe⁶¹ and analysed with NMRFAM-SPARKY⁶². Chemical shift perturbations (CSP p.p.m.) for β -chain amide resonances in the free versus the bound state were calculated using the equation $\Delta\delta^{\text{NH}} = [1/2 (\Delta\delta_{\text{H}}^2 + \Delta\delta_{\text{N}}^2/25)]^{1/2}$ (ref. 63).

Cross-saturation transfer of β -chain-labelled TCR. To determine the surface of the β -chain affected by the α -chain in solution, 2D cross-saturation transfer experiments³⁴ were performed on a 180 μ M B4.2.3 TCR sample prepared with U-[¹⁵N, ²H]-labelled β -chain and unlabelled (protonated) α -chain in 50 mM NaCl, 25 mM HEPES pH 7.3, 0.01% NaN₃, 1 U Roche protease inhibitor in 90% H₂O/10% D₂O. Acquisition parameters for the 2D ¹H-¹⁵N TROSY-HSQC were 256 and 2,048 complex points in the ¹⁵N, ¹H_N dimensions with acquisition times of 45 ms, 71 ms and 16 scans recorded at 800 MHz, 25 °C. Selective saturation of the α -chain aliphatic protons was achieved using a 1,000 point per 15 ms WURST-20 adiabatic pulse⁶⁴ with a 5.3 kHz sweepwidth and maximum radio-frequency amplitude $\gamma B_1(\text{max})/2\pi$ of 237 Hz (Q-factor of 1.0). The centre saturation frequency was set to 0.9 p.p.m. To calibrate the adiabatic pulse inversion profile, we recorded a series of 1D ¹H spectra using a WATERGATE⁶⁵ water suppression element, such that the aliphatic region, including H₂o, was sufficiently saturated while ensuring minimal perturbation of the water and amide resonances. The recycle delay was set to 3.2 s, of which 1.2 s was used for the block of saturation pulses. A control experiment without saturation of the α -chain was obtained using the same parameters with the saturation pulse turned off. The change in peak intensity was determined by calculating the ratio of $I_{\text{sat}}/I_{\text{non-sat}}$ for each assigned β -chain amide resonance and then the ratio was normalized to 1 based on the most-intense NMR peak (T30).

ILV* and AILV-methyl sample preparation and methyl assignments.

Methyl-labelled samples of the TCR β -chain were prepared according to standardized protocols²⁸ using selectively labelled precursors in two distinct ¹³C-labelling patterns, referred to as ILV* and AILV herein. All isotopes were obtained from ISOTECH Stable Isotope Products (Sigma-Aldrich), and the catalogue numbers are indicated below. ILV*-methyl (Ile ¹³CH₃ for δ 1 only; Leu ¹³CH₃/¹²C₂H₅; Val ¹³CH₃/¹²C₂H₅) U-¹⁵N, ¹³C, ²H-labelled β -chain B4.2.3 TCR was prepared in M9 minimal media culture in 1 l ²H₂O supplemented with 3 g ¹³C, ²H glucose (Sigma #552151) and 1 g ¹⁵NH₄Cl (Sigma #299251). The selective labelling of ILV* methyls was achieved by adding 60 mg l⁻¹ 2-ketobutyric acid-¹³C_{4,3,3}-²H₂ (Sigma #607541) for Ile and 120 mg l⁻¹ 2-keto-3-(methyl-d₃)-butyric acid-1,2,3,4-¹³C₄, 3-²H (Sigma #637858) for Leu/Val 1 h prior to induction with 1 mM isopropyl-D-thiogalactoside (IPTG). AILV-methyl (Ala ¹³C β ; Ile ¹³C δ 1; Leu ¹³C δ 1/¹³C δ 2; Val ¹³C γ 1/¹³C γ 2) U-¹⁵N, ²H-labelled β -chain B4.2.3 TCR was prepared in a minimal media culture in 1 l ²H₂O, supplemented with 3 g ¹²C, ²H glucose (Sigma #552003) and 1 g ¹⁵NH₄Cl. To promote overexpression, 0.2 g l⁻¹ ²H, ¹⁵N ISOGRO (Sigma #608300) was added to the minimal media. The selective labelling of AILV side-chain methyls was achieved by adding 60 mg l⁻¹ 2-ketobutyric acid-4-¹³C_{3,3}-²H₂ (Sigma #589276) for Ile and 120 mg l⁻¹ 2-keto-(3-methyl-¹³C)-butyric-4-¹³C₃-²H acid (Sigma #589063) for Leu/Val 1 h prior to induction and 100 mg l⁻¹ L-Alanine-3-¹³C, 2-²H (Sigma #740055) 30 min prior to induction with 1 mM IPTG.

Both ILV* and AILV TCR samples contained 50 mM NaCl, 25 mM HEPES pH 7.3, 0.01% NaN₃, 1 U Roche protease inhibitor in 90% H₂O/10% D₂O. Under these conditions, we obtained complete ¹³C, ¹H labelling of the desired methyl groups without observing scrambling to other side-chain carbon atoms, that remained ¹²C, ²H-labelled. Perfect superposition of Ile ¹³C δ 1, Leu ¹³C δ 1/¹³C δ 2 and Val ¹³C γ 1/¹³C γ 2 methyl resonances in the HMQC spectra recorded using the AILV and CT-HMQC spectra recorded using the ILV* sample, respectively, confirmed that the TCR structure and monomeric state were identical in the two samples.

To assign Ile, Leu and Val side-chain methyls, a 3D HMCM[CG]CBCA methyl out-and-back experiment²⁷ was recorded on 225 μ M ILV*-labelled β -chain B4.2.3 TCR at 800 MHz, 25 °C. The use of the ILV*-labelling scheme successfully generates a linear spin system needed for these experiments. Acquisition parameters were 80, 80, 1,536 complex points in the ¹³C_{aliphatic} ¹³C_M, ¹H_M dimensions with corresponding acquisition times of 4, 10 and 69 ms. A relaxation delay of 1.1 s was used with 40 scans/FID. Chemical shifts (¹³C_{aliphatic}) obtained from the 3D HMCM[CG]CBCA were compared with ¹³C α and ¹³C β chemical shifts for Ile, Leu and Val residues assigned from 3D HNCA and 3D HN(CA)CB experiments for unambiguous assignment of side-chain methyl resonances in the 2D ¹H-¹³C SOFAST HMQC. The 3D HMCM[CG]CBCA also allowed for the assignment of Ile γ 1 and Leu γ chemical shifts. Ala ¹³C β methyl NMR peaks in the 2D ¹H-¹³C SOFAST HMQC were assigned by comparison with Ala ¹³C β chemical shifts observed in 3D HN(CA)CB experiments.

AILV side-chain methyl assignments were validated and stereospecifically disambiguated using methyl-to-methyl NOEs obtained from 3D H_M-C_MH_M SOFAST NOESY and 3D C_M-C_MH_M NOESY experiments²⁹. Here the use of the AILV-labelling scheme outlined above allowed the acquisition of well-resolved ¹³C spectra, without the need for constant-time evolution in the indirect ¹³C dimensions. For the 3D H_M-C_MH_M SOFAST NOESY experiment, acquisition parameters were 64, 64, 1,280 complex points in the ¹H_M, ¹³C_M, ¹H_M dimensions with corresponding acquisition times of 13, 10 and 50 ms with 16 scans/FID. For the 3D C_M-C_MH_M SOFAST NOESY acquisition parameters were 128, 64, 1,280 complex points in the ¹³C_M, ¹³C_M, ¹H_M dimensions with corresponding acquisition times of 20, 10 and 50 ms with 16 scans/FID. Backbone amide and side-chain methyl assignments were cross-validated using methyl-to-amide NOEs obtained from 3D H_N-C_MH_M SOFAST NOESY and 3D C_M-NH_N SOFAST NOESY experiments²⁹. For the 3D H_N-C_MH_M SOFAST NOESY acquisition parameters were 80, 64 and 1,280 complex points in the ¹H_N, ¹³C_M, ¹H_M dimensions with corresponding acquisition times of 9, 10 and 50 ms with 16 scans/FID. For the 3D C_M-NH_N SOFAST NOESY acquisition parameters were 80, 64, 1,280 complex points in the ¹³C_M, ¹⁵N, ¹H_N dimensions with corresponding acquisition times of 13, 13 and 50 ms with 16 scans/FID. All 3D SOFAST NOESY experiments were recorded at 800 MHz, 25 °C on 180 to 320 μ M AILV-methyl-labelled β -chain B4.2.3 TCR samples using a relaxation delay (d1) of 0.2 s and NOE mixing time (d8) of 0.3 s. A 2D ¹H-¹³C SOFAST HMQC²⁹ was acquired on 250 μ M AILV-methyl-labelled β -chain B4.2.3 TCR in the free state and in the bound state in a 200 μ M 1:1 molar complex with P18-I10/H2-D^d at 800 MHz, 25 °C. Acquisition parameters were 250 and 1,280 complex points in the ¹³C_M, ¹H_M dimensions with corresponding acquisition times of 40 ms, 50 ms using a relaxation delay (d1) of 0.2 s with 64 scans/FID in the free state and 128 scans/FID in the bound state. The change in chemical shift (in p.p.m.) between the free and p/MHC bound state of β -chain AILV-methyls was determined using the equation $\Delta\delta^{\text{CH}_3} = [1/2 (\Delta\delta_{\text{H}}^2 + \Delta\delta_{\text{C}}^2/4)]^{1/2}$ (ref. 63). The change in peak intensity was determined by calculating the ratio of $I_{\text{bound}}/I_{\text{free}}$ for each AILV-methyl chemical shift and then normalizing the ratio to 1 based on the most-intense NMR methyl peak in the bound state (I227 δ 1). To confirm the assignments of β -chain AILV-methyl peaks that shifted upon p/MHC binding, an additional 3D H_M-C_MH_M SOFAST NOESY was acquired on labelled β -chain B4.2.3 TCR in a 200 μ M 1:1 complex with P18-I10/H2-D^d using 64, 44, 1,280 complex points in the ¹H_M, ¹³C_M, ¹H_M dimensions with corresponding acquisition times of 10, 5 and 50 ms and 64 scans/FID.

Mutagenesis and functional assays. Mutagenesis was performed using the QuikChange Lightning Multi-Site kit (Agilent Cat No. 210515) following the manufacturer's instructions. Sequences of the mutagenic oligonucleotides are listed in Supplementary Table 2. Full-length parental or mutant B4.2.3 TCR α - and β -chain, linked via a 2A sequence⁶⁶ was cloned into the pMXs retroviral vector⁶⁷ and transfected into the Phoenix-E ecotropic packaging line using X-treme GENE 9 DNA transfection reagent (Roche). Supernatants were collected after 48 h and used to infect logarithmically growing cultures of 58 α - β ⁻, a variant of the DO11.10.7 mouse T-cell hybridoma that lacks a functional TCR⁶⁸. Transductants expressing the B4.2.3 TCR or its mutants were stained with phycoerythrin (PE)-conjugated anti-V α 2 (BD Pharmingen cat. no. 553289 used at 1/100 dilution) and magnetically enriched to >90% with anti-PE Microbeads (Miltenyi Biotech). For stimulation assays, 5 \times 10⁴ parental 58 α - β ⁻ or transductants expressing parental or C β mutant B4.2.3 TCR were stimulated for 16 h with graded concentrations of P18-I10 peptide in the presence of an equal number of the BALB/c-derived B lymphoma line A20 as presenting cells in 96-well flat-bottom plates (Costar). Supernatants were diluted 1:20 for measurements of secreted IL-2 levels by ELISA (BD-Pharmingen) following the manufacturer's instructions. The results of three independent experiments were combined to obtain the means and their s.d.'s. For tetramer binding and dissociation assays, 10⁶ 58 α - β ⁻ cells expressing parental or C β mutant B4.2.3 TCR were incubated with 200 ng of PE-labelled P18-I10/H2-D^d tetramer in a volume of 100 μ l for 1 h on ice, washed with buffer (PBS containing 2% fetal calf serum and 0.1% sodium azide) resuspended in 0.5 ml buffer containing 4 μ g anti-H2-D^d mAb 34-5-8S to block rebinding of dissociated tetramer. At various time points during incubation at room temperature, cells were analysed by flow cytometry for residual bound tetramer.

Data availability. The refined coordinates and structure factors for the X-ray structures of free B4.2.3 TCR and P18-I10/H2-D^d-bound B4.2.3 TCR have been deposited in the Protein Data Bank (www.rcsb.org) with PDB IDs 5IW1 and 5IVX, respectively. NMR assignments for the backbone and side-chain methyl chemical shifts of the β -chain of the B4.2.3 TCR have been deposited into the Biological Magnetic Resonance Data Bank (http://www.bmrb.wisc.edu) under accession number 26977. All other data are available from the corresponding authors upon reasonable request.

References

1. Germain, R. N. & Margulies, D. H. The biochemistry and cell biology of antigen processing and presentation. *Annu. Rev. Immunol.* **11**, 403–450 (1993).
2. Blum, J. S., Wearsch, P. A. & Cresswell, P. Pathways of antigen processing. *Annu. Rev. Immunol.* **31**, 443–473 (2013).
3. Davis, M. M. & Chien, Y.-H. in *Fundamental Immunology, Seventh Edition* (ed. W. E. Paul) 279–305 (Walters Kluwer Lippincott Williams & Wilkins, 2013).
4. Samelson, L. E., Harford, J. B. & Klausner, R. D. Identification of the components of the murine T cell antigen receptor complex. *Cell* **43**, 223–231 (1985).
5. Brenner, M. B., Trowbridge, I. S. & Strominger, J. L. Cross-linking of human T cell receptor proteins: association between the T cell idiotype beta subunit and the T3 glycoprotein heavy subunit. *Cell* **40**, 183–190 (1985).
6. Guy, C. S. & Vignali, D. A. Organization of proximal signal initiation at the TCR:CD3 complex. *Immunol. Rev.* **232**, 7–21 (2009).
7. Hall, C. *et al.* Requirements for cell surface expression of the human TCR/CD3 complex in non-T cells. *Int. Immunol.* **3**, 359–368 (1991).
8. Manolios, N., Letourneur, F., Bonifacio, J. S. & Klausner, R. D. Pairwise, cooperative and inhibitory interactions describe the assembly and probable structure of the T-cell antigen receptor. *EMBO J.* **10**, 1643–1651 (1991).
9. Notarangelo, L. D. Immunodeficiency and immune dysregulation associated with proximal defects of T cell receptor signaling. *Curr. Opin. Immunol.* **31**, 97–101 (2014).
10. Chatenoud, L. & Bluestone, J. A. CD3-specific antibodies: a portal to the treatment of autoimmunity. *Nat. Rev. Immunol.* **7**, 622–632 (2007).
11. Phan, G. Q. & Rosenberg, S. A. Adoptive cell transfer for patients with metastatic melanoma: the potential and promise of cancer immunotherapy. *Cancer Control* **20**, 289–297 (2013).
12. Oates, J., Hassan, N. J. & Jakobsen, B. K. ImmTACs for targeted cancer therapy: Why, what, how, and which. *Mol. Immunol.* **67**, 67–74 (2015).
13. Kuhns, M. S. & Davis, M. M. TCR signaling emerges from the sum of many parts. *Front Immunol.* **3**, 159 (2012).
14. Gil, D., Schrum, A. G., Alarcon, B. & Palmer, E. T cell receptor engagement by peptide-MHC ligands induces a conformational change in the CD3 complex of thymocytes. *J. Exp. Med.* **201**, 517–522 (2005).
15. Aivazian, D. & Stern, L. J. Phosphorylation of T cell receptor zeta is regulated by a lipid dependent folding transition. *Nat. Struct. Biol.* **7**, 1023–1026 (2000).

16. Kozlowski, S. *et al.* Excess beta 2 microglobulin promoting functional peptide association with purified soluble class I MHC molecules. *Nature* **349**, 74–77 (1991).
17. Plaksin, D., Polakova, K., McPhie, P. & Margulies, D. H. A three-domain T cell receptor is biologically active and specifically stains cell surface MHC/peptide complexes. *J. Immunol.* **158**, 2218–2227 (1997).
18. Stone, J. D., Chervin, A. S. & Kranz, D. M. T-cell receptor binding affinities and kinetics: impact on T-cell activity and specificity. *Immunology* **126**, 165–176 (2009).
19. Rossjohn, J. *et al.* T cell antigen receptor recognition of antigen-presenting molecules. *Annu. Rev. Immunol.* **33**, 169–200 (2015).
20. Garcia, K. C. & Adams, E. J. How the T cell receptor sees antigen—a structural view. *Cell* **122**, 333–336 (2005).
21. Marrack, P., Scott-Browne, J. P., Dai, S., Gapin, L. & Kappler, J. W. Evolutionarily conserved amino acids that control TCR-MHC interaction. *Annu. Rev. Immunol.* **26**, 171–203 (2008).
22. Rudolph, M. G., Stanfield, R. L. & Wilson, I. A. How TCRs bind MHCs, peptides, and coreceptors. *Annu. Rev. Immunol.* **24**, 419–466 (2006).
23. Lawrence, M. C. & Colman, P. M. Shape complementarity at protein/protein interfaces. *J. Mol. Biol.* **234**, 946–950 (1993).
24. Reiser, J. B. *et al.* A T cell receptor CDR3beta loop undergoes conformational changes of unprecedented magnitude upon binding to a peptide/MHC class I complex. *Immunity* **16**, 345–354 (2002).
25. He, Y. *et al.* Identification of the docking site for CD3 on the T cell receptor beta chain by solution NMR. *J. Biol. Chem.* **290**, 19796–19805 (2015).
26. Natarajan, A. *et al.* Structural model of the extracellular assembly of the TCR-CD3 complex. *Cell Rep.* **14**, 2833–2845 (2016).
27. Tugarinov, V. & Kay, L. E. Ile, Leu, and Val methyl assignments of the 723-residue malate synthase G using a new labeling strategy and novel NMR methods. *J. Am. Chem. Soc.* **125**, 13868–13878 (2003).
28. Tugarinov, V., Kanelis, V. & Kay, L. E. Isotope labeling strategies for the study of high-molecular-weight proteins by solution NMR spectroscopy. *Nat. Protoc.* **1**, 749–754 (2006).
29. Rossi, P., Xia, Y., Khanra, N., Veglia, G. & Kalodimos, C. G. ¹⁵N and ¹³C-SOFAST-HMQC editing enhances 3D-NOESY sensitivity in highly deuterated, selectively [¹H,¹³C]-labeled proteins. *J. Biomol. NMR* **66**, 259–271 (2016).
30. Shen, Y. & Bax, A. Protein structural information derived from NMR chemical shift with the neural network program TALOS-N. *Methods Mol. Biol.* **1260**, 17–32 (2015).
31. Kabsch, W. & Sander, C. Dictionary of protein secondary structure: pattern recognition of hydrogen-bonded and geometrical features. *Biopolymers* **22**, 2577–2637 (1983).
32. Lipari, G. & Szabo, A. Model-free approach to the interpretation of nuclear magnetic-resonance relaxation in macromolecules. 2. Analysis of experimental results. *J. Am. Chem. Soc.* **104**, 4559–4570 (1982).
33. Berjanskii, M. V. & Wishart, D. S. A simple method to predict protein flexibility using secondary chemical shifts. *J. Am. Chem. Soc.* **127**, 14970–14971 (2005).
34. Takahashi, H., Nakanishi, T., Kami, K., Arata, Y. & Shimada, I. A novel NMR method for determining the interfaces of large protein-protein complexes. *Nat. Struct. Biol.* **7**, 220–223 (2000).
35. Ollerenshaw, J. E., Tugarinov, V. & Kay, L. E. Methyl TROSY: explanation and experimental verification. *Magn. Reson. Chem.* **41**, 843–852 (2003).
36. Sun, Z. J., Kim, K. S., Wagner, G. & Reinherz, E. L. Mechanisms contributing to T cell receptor signaling and assembly revealed by the solution structure of an ectodomain fragment of the CD3 epsilon gamma heterodimer. *Cell* **105**, 913–923 (2001).
37. Gil, D., Schamel, W. W., Montoya, M., Sanchez-Madrid, F. & Alarcon, B. Recruitment of Nck by CD3 epsilon reveals a ligand-induced conformational change essential for T cell receptor signaling and synapse formation. *Cell* **109**, 901–912 (2002).
38. Xu, C. *et al.* Regulation of T cell receptor activation by dynamic membrane binding of the CD3epsilon cytoplasmic tyrosine-based motif. *Cell* **135**, 702–713 (2008).
39. Varani, L. *et al.* Solution mapping of T cell receptor docking footprints on peptide-MHC. *Proc. Natl Acad. Sci. USA* **104**, 13080–13085 (2007).
40. Hawse, W. F. *et al.* TCR scanning of peptide/MHC through complementary matching of receptor and ligand molecular flexibility. *J. Immunol.* **192**, 2885–2891 (2014).
41. Sun, Z. Y. *et al.* Solution structure of the CD3epsilon/delta ectodomain and comparison with CD3epsilon/gamma as a basis for modeling T cell receptor topology and signaling. *Proc. Natl Acad. Sci. USA* **101**, 16867–16872 (2004).
42. Duchardt, E., Sigalov, A. B., Aivazian, D., Stern, L. J. & Schwalbe, H. Structure induction of the T-cell receptor zeta-chain upon lipid binding investigated by NMR spectroscopy. *Chembiochem* **8**, 820–827 (2007).
43. Kuhns, M. S. & Davis, M. M. Disruption of extracellular interactions impairs T cell receptor-CD3 complex stability and signaling. *Immunity* **26**, 357–369 (2007).
44. Feige, M. J., Behnke, J., Mittag, T. & Hendershot, L. M. Dimerization-dependent folding underlies assembly control of the clonotypic alphabeta T cell receptor chains. *J. Biol. Chem.* **290**, 26821–26831 (2015).
45. Hawse, W. F. *et al.* Cutting edge: evidence for a dynamically driven T cell signaling mechanism. *J. Immunol.* **188**, 5819–5823 (2012).
46. van Boxel, G. I., Holmes, S., Fugger, L. & Jones, E. Y. An alternative conformation of the T-cell receptor alpha constant region. *J. Mol. Biol.* **400**, 828–837 (2010).
47. Beddoe, T. *et al.* Antigen ligation triggers a conformational change within the constant domain of the alphabeta T cell receptor. *Immunity* **30**, 777–788 (2009).
48. Li, H., Natarajan, K., Malchiodi, E. L., Margulies, D. H. & Mariuzza, R. A. Three-dimensional structure of H-2Dd complexed with an immunodominant peptide from human immunodeficiency virus envelope glycoprotein 120. *J. Mol. Biol.* **283**, 179–191 (1998).
49. Natarajan, K., Li, H., Mariuzza, R. A. & Margulies, D. H. MHC class I molecules, structure and function. *Rev. Immunogenet.* **1**, 32–46 (1999).
50. Boulter, J. M. *et al.* Stable, soluble T-cell receptor molecules for crystallization and therapeutics. *Protein Eng.* **16**, 707–711 (2003).
51. Otwinowski, Z. & Minor, W. Processing of X-ray diffraction data collected in oscillation mode. *Methods Enzymol.* **276**, 307–326 (1997).
52. McCoy, A. J. *et al.* Phaser crystallographic software. *J. Appl. Crystallogr.* **40**, 658–674 (2007).
53. Adams, P. D. *et al.* The Phenix software for automated determination of macromolecular structures. *Methods* **55**, 94–106 (2011).
54. Chen, V. B. *et al.* MolProbity: all-atom structure validation for macromolecular crystallography. *Acta Crystallogr. D Biol. Crystallogr.* **66**, 12–21 (2010).
55. Pettersen, E. F. *et al.* UCSF Chimera—a visualization system for exploratory research and analysis. *J. Comput. Chem.* **25**, 1605–1612 (2004).
56. Svitel, J., Balbo, A., Mariuzza, R. A., Gonzales, N. R. & Schuck, P. Combined affinity and rate constant distributions of ligand populations from experimental surface binding kinetics and equilibria. *Biophys. J.* **84**, 4062–4077 (2003).
57. Zhao, H., Brautigam, C. A., Ghirlando, R. & Schuck, P. Overview of current methods in sedimentation velocity and sedimentation equilibrium analytical ultracentrifugation. *Curr. Protoc. Protein Sci.* **71**, 20.12.1–20.12.49 (2013).
58. Schuck, P. & Rossmanith, P. Determination of the sedimentation coefficient distribution by least-squares boundary modeling. *Biopolymers* **54**, 328–341 (2000).
59. Pervushin, K. V., Wider, G., Riek, R. & Wuthrich, K. The 3D NOESY-¹H,¹⁵N,¹H]-ZQ-TROSY NMR experiment with diagonal peak suppression. *Proc. Natl Acad. Sci. USA* **96**, 9607–9612 (1999).
60. Ying, J., Chill, J. H., Louis, J. M. & Bax, A. Mixed-time parallel evolution in multiple quantum NMR experiments: sensitivity and resolution enhancement in heteronuclear NMR. *J. Biomol. NMR* **37**, 195–204 (2007).
61. Delaglio, F. *et al.* NMRPipe: a multidimensional spectral processing system based on UNIX pipes. *J. Biomol. NMR* **6**, 277–293 (1995).
62. Lee, W., Tonelli, M. & Markley, J. L. NMRFAM-SPARKY: enhanced software for biomolecular NMR spectroscopy. *Bioinformatics* **31**, 1325–1327 (2015).
63. Grzesiek, S. *et al.* The solution structure of HIV-1 Nef reveals an unexpected fold and permits delineation of the binding surface for the SH3 domain of Hck tyrosine protein kinase. *Nat. Struct. Biol.* **3**, 340–345 (1996).
64. Kupce, E., Schmidt, P., Rance, M. & Wagner, G. Adiabatic mixing in the liquid state. *J. Magn. Reson.* **135**, 361–367 (1998).
65. Piotto, M., Saudek, V. & Sklenar, V. Gradient-tailored excitation for single-quantum NMR spectroscopy of aqueous solutions. *J. Biomol. NMR* **2**, 661–665 (1992).
66. Szymczak, A. L. *et al.* Correction of multi-gene deficiency *in vivo* using a single 'self-cleaving' 2A peptide-based retroviral vector. *Nat. Biotechnol.* **22**, 589–594 (2004).
67. Onishi, M. *et al.* Applications of retrovirus-mediated expression cloning. *Exp. Hematol.* **24**, 324–329 (1996).
68. Letourneur, F. & Malissen, B. Derivation of a T cell hybridoma variant deprived of functional T cell receptor alpha and beta chain transcripts reveals a nonfunctional alpha-mRNA of BW5147 origin. *Eur. J. Immunol.* **19**, 2269–2274 (1989).

Acknowledgements

We thank Drs Paolo Rossi (University of Minnesota) and Vitali Tugarinov (NIH) for help with the implementation of 3D SOFAST NOESY and 3D HMC[CG]CBCA experiments, respectively. We additionally thank Howard Robinson for data collection at the NSLS, Brookhaven, NY, Manqing Hong for help in refinement, Jugmohit Toor for fluorimetry and Robyn Stanfield for sharing her script for calculating TCR/pMHC crossing angles. This research was supported by the Intramural research programmes of the NIAID, NIBIB and NIDDK, NIH, a K-22 Career development Award to N.G.S. through NIAID (AI2573-01), and by the Office of the Director, NIH, under High End Instrumentation (HIE) Grant S10OD018455, which provides funding for the UCSC 800 MHz NMR spectrometer.

Author contributions

K.N., A.C.M., A.B., D.H.M. and N.G.S. designed research, interpreted data and wrote the paper. K.N., J.J., R.W. and L.F.B. prepared samples, performed crystallization and X-ray structure determination, and SPR experiments. H.Z. and P.S. performed AUC experiments and analysed and interpreted AUC data. A.C.M., N.G.S., K.N. and J.Y. prepared isotopically labelled samples and performed NMR experiments. A.C.M., N.G.S. and V.K.K. analysed NMR data. K.N. and M.E.T. performed cell-transfectant experiments.

Additional information

Supplementary Information accompanies this paper at <http://www.nature.com/naturecommunications>

Competing interests: The authors declare no competing financial interests.

Reprints and permission information is available online at <http://npg.nature.com/reprintsandpermissions/>

How to cite this article: Natarajan, K. *et al.* An allosteric site in the T-cell receptor C β domain plays a critical signalling role. *Nat. Commun.* **8**, 15260 doi: 10.1038/ncomms15260 (2017).

Publisher's note: Springer Nature remains neutral with regard to jurisdictional claims in published maps and institutional affiliations.



This work is licensed under a Creative Commons Attribution 4.0 International License. The images or other third party material in this article are included in the article's Creative Commons license, unless indicated otherwise in the credit line; if the material is not included under the Creative Commons license, users will need to obtain permission from the license holder to reproduce the material. To view a copy of this license, visit <http://creativecommons.org/licenses/by/4.0/>

© The Author(s) 2017