

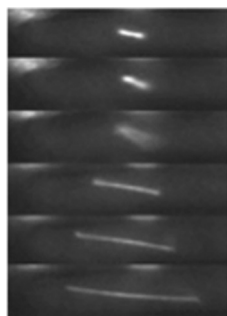


Correction for Nakano et al., “Rad51-Dependent Aberrant Chromosome Structures at Telomeres and Ribosomal DNA Activate the Spindle Assembly Checkpoint”

Akemi Nakano,^a Kenta Masuda,^a Taisuke Hiromoto,^a Katsunori Takahashi,^a Yoshitake Matsumoto,^a Ahmed G. K. Habib,^a Ahmed G. G. Darwish,^{a,b} Masashi Yukawa,^a Eiko Tsuchiya,^a Masaru Ueno^a

Department of Molecular Biotechnology, Graduate School of Advanced Sciences of Matter, Hiroshima University, Higashi-Hiroshima, Japan^a; Department of Biochemistry, Faculty of Agriculture, Minia University, Minia, Egypt^b

Volume 34, no. 8, p. 1389–1397, 2014, <https://doi.org/10.1128/MCB.01704-13>. Page 1391, Fig. 1A: The fluorescence images of the *rqh1-hd* panel were replaced with those of the wild-type panel by mistake during preparation of high-resolution images after manuscript acceptance. The correct *rqh1-hd* panel, used during review, is shown below.



Citation Nakano A, Masuda K, Hiromoto T, Takahashi K, Matsumoto Y, Habib AGK, Darwish AGG, Yukawa M, Tsuchiya E, Ueno M. 2017. Correction for Nakano et al., “Rad51-dependent aberrant chromosome structures at telomeres and ribosomal DNA activate the spindle assembly checkpoint.” *Mol Cell Biol* 37:e00175-17. <https://doi.org/10.1128/MCB.00175-17>.

Copyright © 2017 American Society for Microbiology. All Rights Reserved.

A. G. G. Darwish could not be reached when asked to agree to the correction.