

Research Article

Feeder Cell Type Affects the Growth of In Vitro Cultured Bovine Trophoblast Cells

Islam M. Saadeldin,^{1,2} Ahmed Abdelfattah-Hassan,³ and Ayman Abdel-Aziz Swelum^{1,4}

¹Department of Animal Production, College of Food and Agricultural Sciences, King Saud University, Riyadh 11451, Saudi Arabia

²Department of Physiology, Faculty of Veterinary Medicine, Zagazig University, Zagazig 44519, Egypt

³Department of Anatomy and Embryology, Faculty of Veterinary Medicine, Zagazig University, Zagazig 44519, Egypt

⁴Department of Theriogenology, Faculty of Veterinary Medicine, Zagazig University, Zagazig 44519, Egypt

Correspondence should be addressed to Islam M. Saadeldin; isaadeldin@ksu.edu.sa

Received 23 March 2017; Accepted 4 May 2017; Published 24 May 2017

Academic Editor: Enrique Gomez

Copyright © 2017 Islam M. Saadeldin et al. This is an open access article distributed under the Creative Commons Attribution License, which permits unrestricted use, distribution, and reproduction in any medium, provided the original work is properly cited.

Trophectoderm cells are the foremost embryonic cells to differentiate with prospective stem-cell properties. In the current study, we aimed at improving the current approach for trophoblast culture by using granulosa cells as feeders. Porcine granulosa cells (PGCs) compared to the conventional mouse embryonic fibroblasts (MEFs) were used to grow trophoctoderm cells from hatched bovine blastocysts. Isolated trophoctoderm cells were monitored and displayed characteristic epithelial/cuboidal morphology. The isolated trophoctoderm cells expressed mRNA of homeobox protein (*CDX2*), cytokeratin-8 (*KRT8*), and interferon tau (*IFNT*). The expression level was higher on PGCs compared to MEFs throughout the study. In addition, primary trophoctoderm cell colonies grew faster on PGCs, with a doubling time of approximately 48 hrs, compared to MEFs. PGCs feeders produced a fair amount of 17β -estradiol and progesterone. We speculated that the supplementation of sex steroids and still-unknown factors during the trophoblasts coculture on PGCs have helped to have better trophoctoderm cell's growth than on MEFs. This is the first time to use PGCs as feeders to culture trophoctoderm cells and it proved superior to MEFs. We propose PGCs as alternative feeders for long-term culture of bovine trophoctoderm cells. This model will potentially benefit studies on the early trophoblast and embryonic development in bovines.

1. Introduction

There are two distinct cell populations in the blastocysts of mammals, the trophoblast and the inner cell mass. During embryogenesis, trophoblast cells are believed to be the first to differentiate [1]. The trophoblastic cells form most of the placenta, whereas the inner cell mass grows to give the embryo and its related membranes [2]. So, although the implantation and placental formation step is dependent on the differentiation of the trophoblast, this process involves unknown participating factors and remains weakly understood. Recently, a number of specific molecules has been linked as markers to trophoblastic cells, during bovine peri-implantation processes, such as interferon tau (*IFNT*) [3, 4], early trophoblastic marker *CDX2* [5], and cytokeratin-8 (*KRT8*) in in vitro produced bovine embryos [6].

Studying development and functions of trophoblastic cells is critical; therefore, in vitro models for culturing primary trophoblast cells are essential. However, the finite lifespan of primary trophoblast cells limits their long-term culture and use in investigations. In an attempt to prolong trophoblast cells lifespan in goat, telomerase immortalized trophoblast cells (hTERT-transfected cells) showed more telomerase activity and proliferated persistently for at least 50 passages without any signs of senescence [7]. But, many researchers are skeptic about using transfected cell lines in their research because their regeneration is costly and complex, and little is known about how transfection could inadvertently change the outcomes of their research. Consequently, maintenance of trophoblastic cell lines using feeder cells comes as a more convenient and feasible approach. In this regard, recently, some trophoblastic cell lines were

established, on mouse embryonic fibroblasts as feeders, in several species as porcine [8], murine [9], and bovine [10, 11]. Henceforward, improving the culture system is of particular interest and advantage, to facilitate the *in vitro* investigation of the trophoblastic cells. In the present study, and for the first time, porcine granulosa cells were used as alternative feeder cell for culturing primary trophoblastic cells which were isolated from *in vitro* produced bovine blastocysts.

2. Materials and Methods

2.1. Oocyte Collection and In Vitro Maturation (IVM). Cow ovaries were obtained from a nearby abattoir, washed with saline and kept in it at 35°C, and promptly sent (within 2 hrs) to the lab. These cows' management was as previously described [12]. Ovarian follicles (diameter = 2–8 mm) were aspirated with an 18-gauge needle connected to 10 mL disposable syringe to obtain cumulus-oocyte complexes (COCs). The COCs were selected, if they had evenly granulated cytoplasm and enclosed by three or more layers of compact cumulus cells and washed 3x in HEPES-buffered TCM-199 (Invitrogen, USA) supplemented with 10% FBS, 2 mM NaHCO₃ (Sigma, USA), and 1% penicillin-streptomycin (v/v, Sigma, USA). Followed by IVM, COCs were cultivated in 4-well plates (30–40 oocytes per well; Falcon, BD, UK) in 450 µL TCM-199 with 10% FBS, 0.005 AU/mL FSH (Antrin, Tokyo, Japan), and 1 µg/mL 17β-estradiol (Sigma, USA) at 39°C in a humidified atmosphere of 5% CO₂ for 24 hrs.

2.2. In Vitro Fertilization (IVF) and In Vitro Culture (IVC) of Embryos. This protocol followed our previously published protocol [11]. Motile spermatozoa were obtained by purification using Percoll gradient method as previously described [13]. Shortly, semen straws were thawed and spermatozoa were collected by centrifugation on a (45–90%) Percoll discontinuous gradient at 1500 rpm for 15 minutes. The 45% Percoll solution was prepared using 90% Percoll and TALP medium (1:1 ratio). The obtained sperm-pellet was washed (2x) with TALP medium then centrifuged at 1500 rpm for 5 minutes. Then, active and motile sperms (1–2 × 10⁶ sperm/mL) were used for inseminating the IVM oocytes (day 0) for 18 hrs in 30 µL IVF/TALP medium blanketed with mineral oil at 39°C in 5% CO₂ humidified atmosphere. Plausible zygotes were stripped and cultivated in a two-step defined culture medium as previously described [14, 15] and overlaid with mineral oil (Sigma, USA). Fertilization was repeated six times (*n* = 150, 25 oocytes each). We obtained forty-nine blastocysts (32.6%); among them thirty-six blastocysts were hatched (24%) on day 10 of IVC that were used for trophoblast culture.

2.3. Preparation of Feeder Cells. Two different feeders were used: the conventional method using mouse embryonic fibroblasts (MEFs) as we described before [11] and new feeder porcine granulosa cells (PGCs). PGCs were obtained through aspiration of follicular fluid of 4–6 mm porcine ovarian follicles with an 18-gauge needle. The follicular fluid was centrifuged at 1500 rpm for 2 minutes and then washed three times using PBS and then with culture medium (DMEM

and FBS 10%). The two cell types were mitotically inactivated using mitomycin-C (Sigma-Aldrich Corp.) followed by culturing (well density = 5 × 10⁴ cell/mL) on 4-well plates coated with 0.1% (w/v) gelatin. The medium comprised of DMEM-199 and 10% (v/v) FBS, with addition of nonessential amino acids (NEAA), β-mercaptoethanol, and nucleosides as previously described [10].

2.4. Measurement of Steroid Hormones in the Culture Medium. Steroids (estrogen and progesterone) were measured in the culture medium using commercial kits, following producer's directions. Culture media were aspirated from five different replicates and were centrifuged at 1500 rpm for 5 min. The supernatant was divided into aliquots and preserved at –20°C until analyzed. Progesterone (P4) levels were measured by radioimmunoassay (RIA) using commercial progesterone kit (Coat-a-Count, Siemens, USA). The kit contains rabbit anti-P4 antibody, and the minimum detection limit is 0.02 ng/mL. The intra- and interassay coefficient of variation (CV%) ranged from 2.7 to 8.8 and from 3.9 to 9.7, respectively. Also, estradiol (E2) levels were determined by electrochemiluminescence immune-assay with commercial kit (Estradiol II kit, Roche, USA). The kit contains rabbit anti-E2 antibody and the kit minimum detection limit is 5.0 pg/mL. The intra- and interassay coefficient of variation (CV%) ranged from 2.3 to 6.2 and from 6.2 to 13.0, respectively. Each sample from each replicate was measured three times and the data were recorded as mean ± SEM.

2.5. Isolation and Culture of Bovine Trophoblastic Cells. Thirty-six IVF hatched blastocysts on days 10–11 of IVC were randomly distributed into two 4-well plates (Nunc, Thermo Scientific, Denmark), grouped into MEF and PGCs groups, eighteen embryos each and three embryos per each replicate. The plates were precoated with 0.1% gelatin and followed by culturing of mitotically inactivated feeder layers of either mouse embryonic fibroblasts (MEF) or porcine granulosa cells (PGCs). The blastocysts were primary cultivated in 1 mL DMEM/F12 medium [composed of DMEM/F12 provided with 10% FBS, 0.1 mM β-mercaptoethanol, 1% NEAA (Invitrogen), 2 mM GlutaMax, and 1% penicillin/streptomycin (Invitrogen)], with medium changes with fresh medium every 3–4 days. Subculturing of the trophoblastic cells was by mechanical detachment and chopping of the colonies into relatively equal small pieces and recultivating those pieces on new feeder-plates. The small chops were centrifuged at 1500 rpm for 2 min and pelleted in 1.5 mL rounded bottom centrifuge tubes. Then, resuspension of the pellet was done with DMEM/F12, followed by plating onto new feeder-plates (split ratio = 1:4–1:6). Incubations were done at 39°C in 5% CO₂ humidified atmosphere.

2.6. RT-PCR. Trophoblast colonies (*n* = 5, three replicates) of the 1st and 10th passages were mechanically isolated and washed three times with PBS. Total RNA was extracted from trophoblast colonies using an RNeasy total extraction kit (Qiagen, USA) following the manufacturer directions, and as we described previously [11]. Reverse transcription reactions were done in 20 µL reactions at 50°C for 50 minutes

TABLE 1: Primers used for RT-PCR.

Gene	Primer sequences (5'-3')	Annealing temperature (°C)	Fragment size (bp)	GenBank accession number
<i>IFNT</i>	F: TCCATGAGATGCTCCAGCAGT R: TGTTGGAGCCCAGTGCAGA	60	103	X65539
<i>CDX2</i>	F: GCCACCATGTACGTGAGCTAC R: ACATGGTATCCGCCGTAGTC	60	140	DQ126146
<i>KRT8</i>	F: CACCAGTCCAAGCCTGTGG R: TCAGGTCTCCTGTGCAGATGC	55	176	NM_001033610.1
<i>GAPDH</i>	F: GCGTGAACCACGAGAAGTA R: CCCTCCACGATGCCAAAGT	60	119	NM_001034034.1

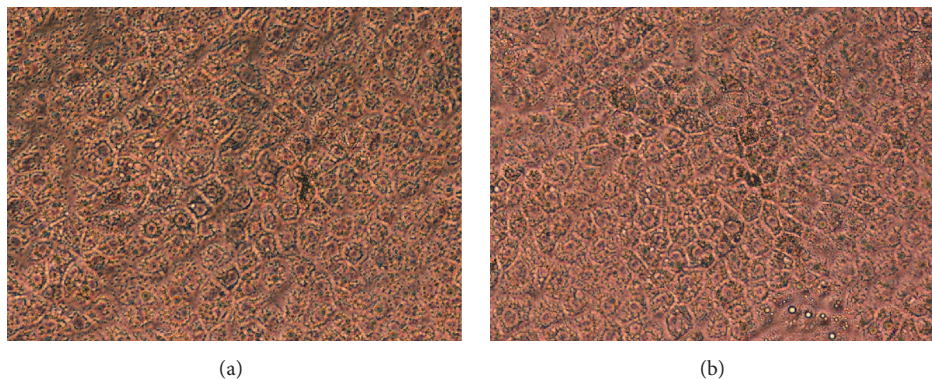


FIGURE 1: Representative phase-contrast light micrograph showing the typical cuboidal morphology of cultured bovine trophoblastic cells (10th passage) on mouse embryonic fibroblasts, MEFs (a), and on porcine granulosa cells, PGCs (b) [200x].

using random-hexamers and SuperScript™ III Reverse-Transcriptase (Invitrogen). One μg cDNA was subjected to RT-PCR using a Maxime PCR-PreMix kit (i-starTaq, Intron, Republic of Korea). Primers and their sequences, annealing temperatures and expected sizes of products are listed in Table 1. The amplification cycle was done with initial denaturation at 95°C for 5 minutes, followed by cycles of denaturation at 95°C for 30 seconds, annealing for 30 seconds, extension at 72°C for 45 seconds and final extension at 72°C for 5 minutes. PCR products ($10\ \mu\text{L}$) were ran on 1% agarose gel (Intron) stained with RedSafe™ (Intron). Densitometry scanning with ImageJ v1.45 software (NIH, USA) was done to quantify the intensity of RT-PCR signals and specific target's values were normalized using the internal control (*GAPDH*) to calculate relative expression units. All controls in RT-PCR, reactions without cDNA template and those without reverse transcription, gave no amplification reaction.

2.7. Statistical Analysis. Data were analyzed with one-way ANOVA, Tukey's test was done to conclude significant differences between the different experimental groups using GraphPad (Version 4.0). Data were considered statistically significant when P value was <0.05 .

3. Results and Discussion

In this study, the primary culture of trophoblasts was done by culturing of hatching/hatched blastocysts on feeder cells, which were either mouse embryonic fibroblasts (MEFs) or, for the first time, porcine granulosa cells (PGCs).

When the feeders were cultured alone, PGCs showed higher proliferation with approximately 24 hrs doubling time comparing to MEFs ($P \leq 0.05$). In addition, PGCs were easier to recover from monolayer cultures and offered a fair amount of sex steroids, 17β -estradiol (E2, $31.21 \pm 3.1\ \text{ng/mL}$) and progesterone (P4, $6.36 \pm 0.4\ \text{ng/mL}$). Steroids production by cultured porcine granulosa cells has been previously reported [16].

After coculture with mitotically inactivated MEFs or PGCs, blastocysts were seen attached and from it outgrowths were observed; then it was kept in culture for 10 days till it reached approximately 1 cm diameter. Following that, secondary and succeeding subcultures underwent mechanical detachment and cutting/chopping of these cell-growths and subculturing of the relatively similar sized small pieces/chops on fresh feeder-plates every 7 days (after reaching about 0.5 cm diameter). In all subcultures, trophoblasts were morphologically visible as large cuboidal cells under phase-contrast microscope (Figure 1).

The isolated trophoblastic cells showed faster growth pattern in primary culture on PGCs, in one-week colony diameter measured $7.0 \pm 0.3\ \text{mm}$, compared to those cultured on MEFs; colonies grew to $5.7 \pm 0.4\ \text{mm}$ ($P \leq 0.05$; Figures 2(a) and 2(b)), whereas, on subsequent cultures (2nd–10th) the difference in colony morphology, although it was visually larger when trophoblasts were cultured on PGCs compared to MEFs, did not reach statistical significance ($P > 0.05$; Figures 2(c), 2(d), 2(e), and 2(f)).

In contrast to the colony size, the isolated cells showed high expression of trophoblast gene-markers throughout the

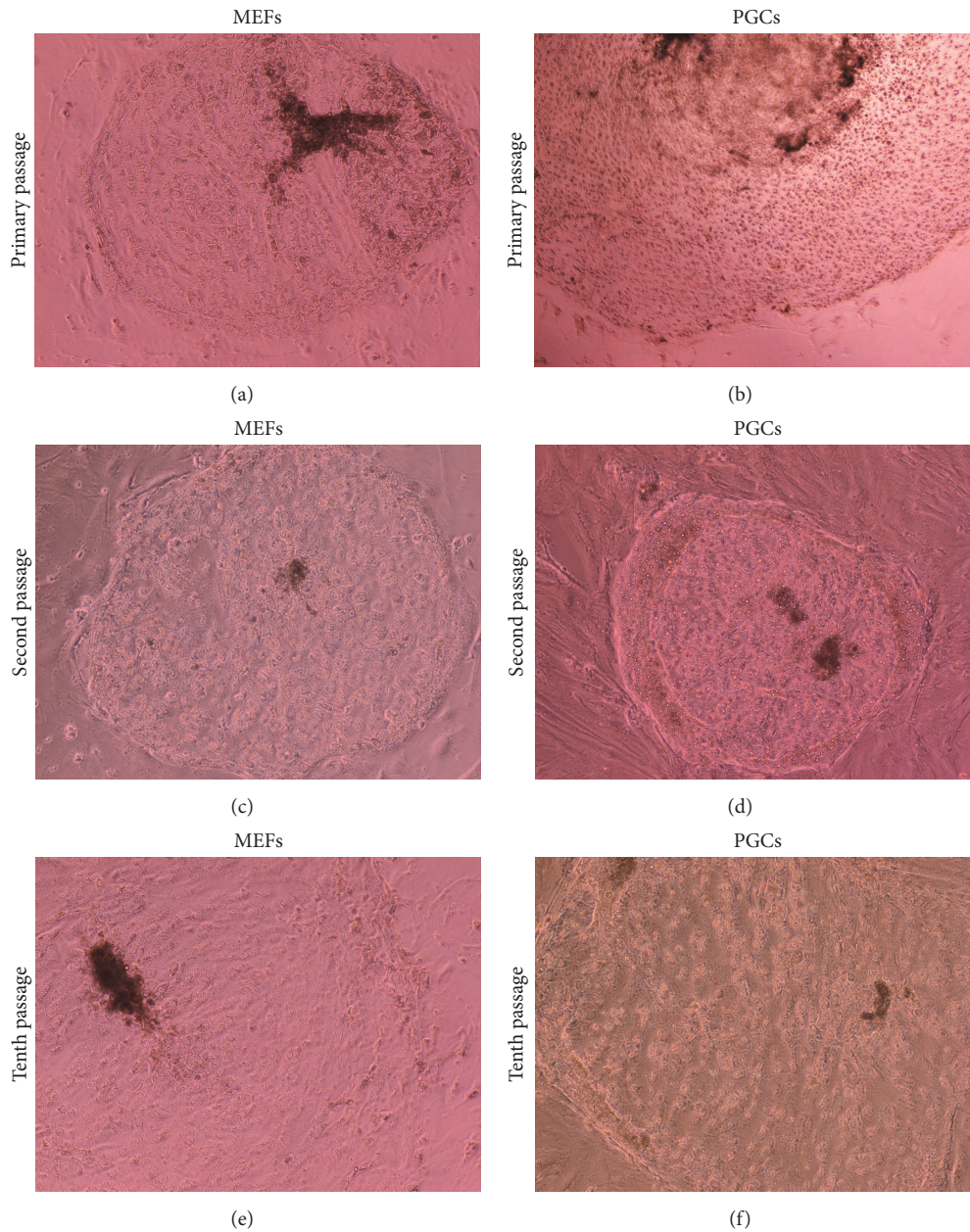


FIGURE 2: Phase-contrast light micrographs showing culture of bovine trophoblast on mouse embryonic fibroblast (MEFs) and on porcine granulosa cells (PGCs). The cells were subcultured until the 10th passage [100x].

study; these were *IFNT*, *KRT8*, and *CDX2* (Figure 3). Of importance, the expression levels of *IFNT*, *KRT8*, and *CDX2* mRNA were higher when trophoblastic cells were cultured on PGCs compared to MEFs, particularly at the 10th passage ($P \leq 0.05$; Figure 3). The culture was stopped at passage 10; that is, the culture duration was approximately 70 days after the primary culture.

Isolated trophoblastic cells on both feeders were morphologically similar, which visually is a good sign that culturing the cells on PGCs resulted in a normal morphology similar to using MEFs. What is more, the trophoblast cells isolated on PGCs showed superior quality, indicated by

higher expression of *IFNT*, *KRT8*, and *CDX2* and long-term culture for up to 70 days. Interferon tau is produced early in preimplantation [3, 4] and its expression indicates normal trophoblast function. So, in case of PGCs as feeders, higher expression of trophoblast *IFNT* fairly indicates an improved trophoblast function, while the expression of the homeobox protein *CDX2* is considered as a healthy sign of preimplantation trophoblast cells [5, 15] and again it was highly expressed in cells cultured on PGCs, favoring PGCs as feeders over MEFs. Moreover, *KRT8* expression as a marker for trophoblast is also consistent with other studies on in vitro produced bovine embryos [6, 17].

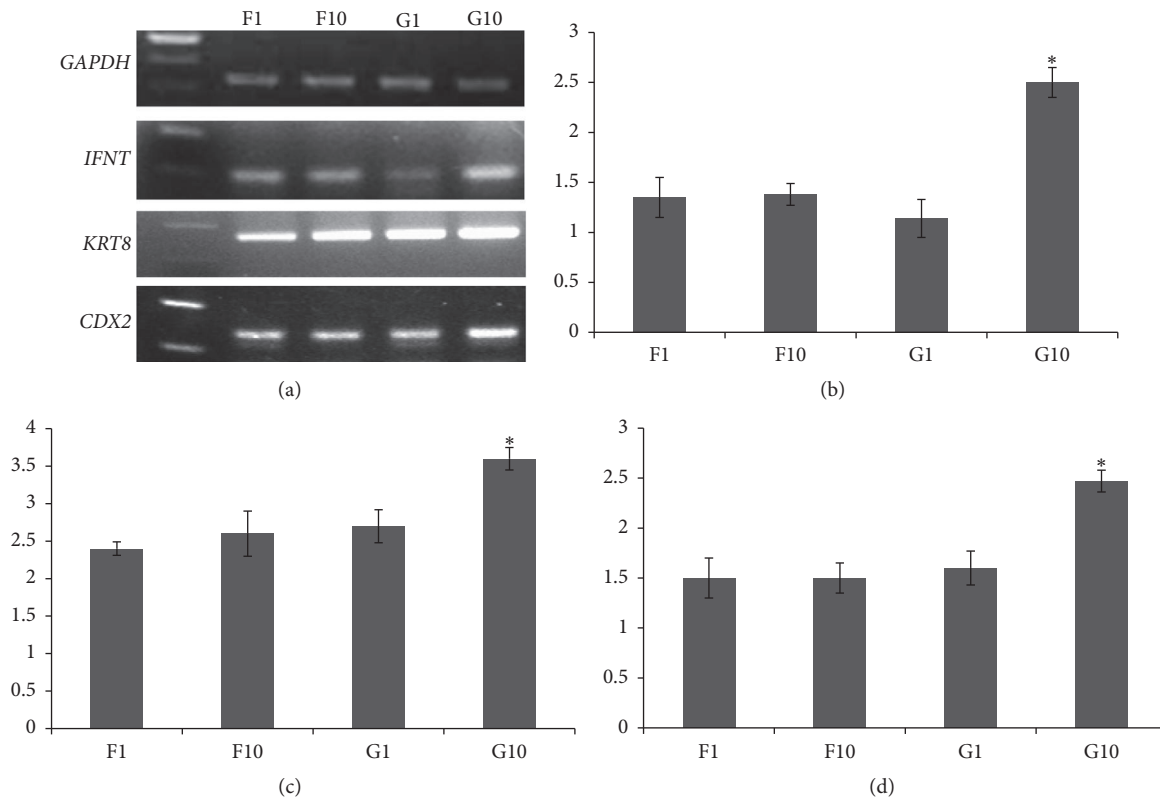


FIGURE 3: (a) RT-PCR analysis using primers specific for interferon tau (*IFNT*), keratin-8 (*KRT8*), and homeobox protein (*CDX2*) expression in trophoblast colonies. In all analyses, reactions without cDNA template or reverse transcriptions resulted in negative amplification. ((b), (c), and (d)) Densitometric relative expression values of *IFNT*, *KRT8*, and *CDX2*, respectively (normalized to those of the internal control *GAPDH*) using ImageJ v1.45 software (NIH, USA). Trophoblast cells were grown on mouse embryonic fibroblasts, primary culture (F1) and 10th passage (F10), and on porcine granulosa cells, primary culture (G1) and 10th passage (G10) [* P value ≤ 0.05].

In addition, PGCs provided the cultured trophoblastic cells with a considerable amount of E2 and P4. Previous work revealed that estrogens and progesterone receptors were expressed in trophoblast and caruncular epithelium and suggested that E2 and P4 are important factors controlling caruncular growth, differentiation, and function [18]. Interestingly, it was found recently that genes encoding steroid hormones were also expressed by bovine trophoblastic cells [19, 20]. Moreover, steroidogenic proteins were expressed in bovine placental tissue during the first half of gestation [21]. Hence, we assume that the constant supplementation of sex steroids and other yet to be determined factors, during trophoblasts coculture with PGCs, is better and superior to using MEFs as feeders. Nevertheless, steroids synthesis and functions during early implantation remain understudied and more research is needed to understand their roles(s) throughout the peri-implantation period.

4. Conclusions

In this report, we described the isolation of trophoblastic cell line from bovine IVF embryos for the first time using granulosa cells as feeders. The isolated trophoblastic cells had normal shape and superior trophoblast quality, indicated by increased expression of trophoblast markers *IFNT*, *KRT8*, and *CDX2* compared to cells isolated on MEFs. Using this

model, we anticipate more studies aiming at elucidating the fetal-maternal crosstalk at implantation. Also, it will be a valuable model for studies interested in explaining effects of diseases, infections, or toxicity on the placental formation and early development and gestation.

Ethical Approval

All procedures and handling described in this study (of mice or animal tissue) followed directions and protocols approved by the Animal Care and Ethics Committee of the King Saud University.

Disclosure

Islam M. Saadeldin and Ahmed Abdelfattah-Hassan are co-first authors. All data generated or analyzed during this study are included in this article.

Conflicts of Interest

The authors declare that they have no conflicts of interest.

Authors' Contributions

All authors shared in the design and implementation of this study. Also, all authors read and approved the final

manuscript. Islam M. Saadeldin and Ahmed Abdelfattah-Hassan are equally contributing authors to the work.

Acknowledgments

The authors extend their appreciation to the Deanship of Scientific Research at King Saud University for funding this work through the Research Group Project (no. RG-1438-018).

References

- [1] A. H. Handyside and M. H. Johnson, "Temporal and spatial patterns of the synthesis of tissue-specific polypeptides in the preimplantation mouse embryo," *Journal of Embryology and Experimental Morphology*, no. 44, pp. 191–199, 1978.
- [2] P. Hyttel, F. Sinowatz, and M. Vejlested, *Essentials of Domestic Animal Embryology*, Elsevier Saunders, 1st edition, 2010.
- [3] A. P. F. Flint, A. Henville, and W. B. Christie, "Presence of placental lactogen in bovine conceptuses before attachment," *Journal of Reproduction and Fertility*, vol. 56, no. 1, pp. 305–308, 1979.
- [4] G. Morgan, F. B. P. Wooding, J. F. Beckers, and H. G. Friesen, "An immunological cryo-ultrastructural study of a sequential appearance of proteins in placental binucleate cells in early pregnancy in the cow," *Journal of Reproduction and Fertility*, vol. 86, no. 2, pp. 745–752, 1989.
- [5] A. T. Schiffmacher and C. L. Keefer, "CDX2 regulates multiple trophoblast genes in bovine trophoblast CT-1 cells," *Molecular Reproduction and Development*, vol. 80, no. 10, pp. 826–839, 2013.
- [6] J. A. Maclean, A. Chakrabarty, S. Xie, J. A. Bixby, R. M. Roberts, and J. A. Green, "Family of kunitz proteins from trophoblast: expression of the trophoblast Kunitz domain proteins (TKDP) in cattle and sheep," *Molecular Reproduction and Development*, vol. 65, no. 1, pp. 30–40, 2003.
- [7] F. Dong, Y. Huang, W. Li et al., "The isolation and characterization of a telomerase immortalized goat trophoblast cell line," *Placenta*, vol. 34, no. 12, pp. 1243–1250, 2013.
- [8] J.-E. Fléchon, S. Laurie, and E. Notarianni, "Isolation and characterization of a feeder-dependent, porcine trophoblast cell line obtained from a 9-day blastocyst," *Placenta*, vol. 16, no. 7, pp. 643–658, 1995.
- [9] S. Tanaka, T. Kunath, A.-K. Hadjantonakis, A. Nagy, and J. Rossant, "Promotion to trophoblast stem cell proliferation by FGF4," *Science*, vol. 282, no. 5396, pp. 2072–2075, 1998.
- [10] N. C. Talbot, T. J. Caperna, J. L. Edwards, W. Garrett, K. D. Wells, and A. D. Ealy, "Bovine blastocyst-derived trophoblast and endoderm cell cultures: interferon *tau* and transferrin expression as respective in vitro markers," *Biology of Reproduction*, vol. 62, no. 2, pp. 235–247, 2000.
- [11] I. M. Saadeldin, W. Cho, B. R. da Tore, B. Kim, B. Le, and G. Jang, "Embryonic development and implantation related gene expression of oocyte reconstructed with bovine trophoblast cells," *Journal of Reproduction and Development*, vol. 58, no. 4, pp. 425–431, 2012.
- [12] A. Abdelfattah-Hassan, S. Almería, B. Serrano, N. M. de Sousa, J. F. Beckers, and F. López-Gatius, "The inseminating bull and plasma pregnancy-associated glycoprotein (PAG) levels were related to peripheral leukocyte counts during the late pregnancy/early postpartum period in high-producing dairy cows," *Theriogenology*, vol. 77, no. 7, pp. 1390–1397, 2012.
- [13] G. M. Machado, J. O. Carvalho, E. S. Filho et al., "Effect of Percoll volume, duration and force of centrifugation, on in vitro production and sex ratio of bovine embryos," *Theriogenology*, vol. 71, no. 8, pp. 1289–1297, 2009.
- [14] K. T. Lim, G. Jang, K. H. Ko et al., "Improved in vitro bovine embryo development and increased efficiency in producing viable calves using defined media," *Theriogenology*, vol. 67, no. 2, pp. 293–302, 2007.
- [15] I. M. Saadeldin, B. Kim, B. Lee, and G. Jang, "Effect of different culture media on the temporal gene expression in the bovine developing embryos," *Theriogenology*, vol. 75, no. 6, pp. 995–1004, 2011.
- [16] H. M. Picton, B. K. Campbell, and M. G. Hunter, "Maintenance of oestradiol production and expression of cytochrome P450 aromatase enzyme mRNA in long-term serum-free cultures of pig granulosa cells," *Journal of Reproduction and Fertility*, vol. 115, no. 1, pp. 67–77, 1999.
- [17] A. El-Sayed, M. Hoelker, F. Rings et al., "Large-scale transcriptional analysis of bovine embryo biopsies in relation to pregnancy success after transfer to recipients," *Physiological Genomics*, vol. 28, no. 1, pp. 84–96, 2006.
- [18] B. Hoffmann and G. Schuler, "The bovine placenta; a source and target of steroid hormones: observations during the second half of gestation," *Domestic Animal Endocrinology*, vol. 23, no. 1-2, pp. 309–320, 2002.
- [19] G. Schuler, G. R. Özalp, B. Hoffman, N. Harada, P. Browne, and A. J. Conley, "Reciprocal expression of 17 α -hydroxylase-C17,20-lyase and aromatase cytochrome P450 during bovine trophoblast differentiation: a two-cell system drives placental oestrogen synthesis," *Reproduction*, vol. 131, no. 4, pp. 669–679, 2006.
- [20] J. Vanselow, R. Fürbass, and U. Tiemann, "Cultured bovine trophoblast cells differentially express genes encoding key steroid synthesis enzymes," *Placenta*, vol. 29, no. 6, pp. 531–538, 2008.
- [21] A. Verduzco, G. Fecteau, R. Lefebvre, L. C. Smith, and B. D. Murphy, "Expression of steroidogenic proteins in bovine placenta during the first half of gestation," *Reproduction, Fertility and Development*, vol. 24, no. 2, pp. 392–404, 2012.