

RESEARCH ARTICLE

Open Access



Copaiba oil-resin (*Copaifera reticulata* Ducke) modulates the inflammation in a model of injury to rats' tongues

Francisco Bruno Teixeira^{1†}, Raíra de Brito Silva^{1†}, Osmar Alves Lameira², Liana Preto Webber³, Roberta Souza D'Almeida Couto¹, Manoela Domingues Martins³ and Rafael Rodrigues Lima^{1*}

Abstract

Background: The regeneration of integrity and tissue homeostasis after injury is a fundamental property and involves complex biological processes fully dynamic and interconnected. Although there are medications prescribed to accelerate the process of wound healing by reducing the exaggerated inflammatory response, comes the need to search for different compounds of Amazonian biodiversity that can contribute to the acceleration of the healing process. Among these products, the copaiba oil-resin is one of the most prominent feature in this scenario, as they have been reported its medicinal properties.

Methods: Aiming to evaluate the anti-inflammatory and healing effect of copaiba oil-resin (*Copaifera reticulata* Ducke) in transfixing injury of rats' tongues first proceeded up the copaiba oil-resin oral toxicity test in 5 male mice to stipulate the therapeutic dose which was established at 200 mg/kg/day. Then it was induced transfixing injury in a total of 15 Wistar rats. The animals were randomly divided into three groups based on the treatment: control group, dexamethasone group and copaiba oil-resin group. After 7 days of treatment, histological slides stained with hematoxylin and eosin was prepared. Immunohistochemistry for CD68 (macrophage marker) was performed and analyzed by the cell counter Image J.

Results: The acute toxicity test showed that the oil-resin copal has low toxicity. Furthermore, copaiba oil-resin therapy modulates the inflammatory response by decreasing the chronic inflammatory infiltrate, edema and specifically the number of macrophages.

Conclusions: The results indicate the potential of the Amazon region and showed up relevant because therapy with this extract modulates the inflammatory process.

Keywords: Copaiba oil-resin, Inflammation, Complementary therapies, Macrophage, Model of injury, Amazonian biodiversity, *Copaifera Reticulata Ducke*

Background

The Brazilian Amazon concentrates a large amount of natural resources with various therapeutic applications in alternative medicine. The oil-resin, copaiba, is a natural product of the Amazon's biodiversity more highlighted in this scenery [1, 2], mainly due to its anti-inflammatory and healing properties [2, 3]. Copaiba oil-resin is an

extracted exudate from trees in the genus *Copaifera* ("copaibeiras") that has more than 60 species cataloged in the world [3]. Copaiba oil-resin is one of the most important renewable natural remedy for the populations of the Amazon region [2].

Studies with copaiba oil-resin showed that this natural product is formed by several components of the bases diterpenes and sesquiterpenes, and the concentrations of these compounds can vary according to species, soil properties, climatic conditions, and the period of the year when the extraction was done [3].

* Correspondence: rafalima@ufpa.br

†Equal contributors

¹Laboratory of Functional and Structural Biology, Institute of Biological Science, Federal University of Pará, Belém 66075-900, Brazil

Full list of author information is available at the end of the article



Copaiba oil-resin is often used orally or topically [2]. Several studies using different species and in various administration forms identified its anti-inflammatory and wound healing property in different parts of the body [4–10].

In the Amazon region, the species, *Copaifera reticulata* Ducke, is the most frequently found and the most often used. Due to this, copaiba oil-resin is found in very popular street markets indicated treatments with injured due to their possible anti-inflammatory activity and healing [2].

Due to its widespread use, some scientific studies have proposed identify the main therapeutic activities that this compound had. From this, some studies in vitro and in vivo have observed its larvicide activity [11] and analgesic [12], antioxidant [2], anxiolytic [13], and antimicrobial [14], and inhibition of microglial and neutrophilic activation [15]. In addition to these properties, some studies have found the use of this species to be safe, and neither high toxicity nor teratogenic activity in pregnancy has been observed [16, 17].

Considering the complexity of repair tissue physiology and the structural and functional damage incurred due to wounds, it is necessary to search for different compounds that can contribute to the reduction of the inflammatory response and to accelerate the healing process. Our study evaluates the anti-inflammatory properties of copaiba oil-resin (*Copaifera reticulata* Ducke) in a model that transfixes injury in rats' tongues.

Methods

Plant material, oil-resin extraction and characterization

For oil-resin collection were used dispersed native adult plants of *Copaifera reticulata* Ducke over 30 years old located in the municipality of Belterra, Pará, Brazil. The trees were randomly drilled with a traditional auger 2 cm diameter and 45 cm in length, making up two holes in the height of 1 m and 1.50 m, respectively. Oil-resin samples were stored in plastic containers (2000 ml) by the action tree and protected from light with aluminum foil. Subsequently, they were transferred to glass jars (20 ml) for further analysis. The bore of the tree after the complete draining of the oil-resin pipe was sealed with PVC type with a diameter of $\frac{3}{4}$ and 10 cm long containing a plastic cap in order to facilitate collection and avoid other waste wood. A copy of the plant species deposited in the Herbarium IAN EMBRAPA Eastern Amazon (Exsicata: 183,939). The method of chemical characterization of copaiba oil-resin has been described by Santos-Guimarães et al., 2012 [15].

Experimental animals

A total of 15 adult male Wistar rats (3 months old), obtained from the Federal University of Pará (UFPA) were

kept in collective cages (5 animals per cage) and more 5 mice (*Mus musculus*) adult male Swiss. Animals were maintained in a climate-controlled room with a 12 h light-dark cycle (lights on 7:00 AM) and food and water ad libitum. All procedures were approved by the Ethics Committee on Experimental Animals of the Federal University of Pará (license number BIO-203-14), following the *Guide for the Care and Use of Laboratory Animals*.

Acute oral toxicity test (OECD, 2008)

A test for acute oral toxicity was performed, according to the Guide 425/2008 from the Organization for Economic Co-operation and Development (OECD) [18], where the estimation of the LD50 was estimated using the limit test method. In this study, a single Swiss albino mouse (*Mus musculus*), weighing 20 to 30 g, received a dose of 2000 mg/kg and were observed for 48 h. If the animal survived, the other 4 animals were sequentially tested with the same dose. The survival of 3 or more animals qualifies as the LD50 greater than 2000 mg/kg (low toxicity).

If the first animal should die or deaths were greater than or equal to three of five animals, would follow-up for the main test. Another animal received 175 mg/kg orally. If the animal survived, another animal was tested with a higher dose (range of 3.2×) until a dose resulted in death or overt toxicity. When the first animal of the main test manifested obvious intoxication or death, the following animal received a lower dose (range of 3.2×). The test continued until 3 consecutive animals survived the upper limit dose (2000 mg/kg) or 5 recoveries occurred in any of the 5 animals tested consecutively, and at least 4 animals recovered.

In this model, all animals were observed individually for 30 min after administering the dose and then evaluated periodically during the 48 h following surgery. In this evaluation, toxic manifestations were observed, such as changes in skin, fur, eyes, and mucous membranes. Toxicity was also evident in the animals' circulatory, respiratory, autonomic and central nervous systems and in locomotor behavior. The tests evaluating copaiba oil-resin effects were carried out with doses equivalent to 10% of the lowest dose that caused the deaths of at least three animals.

Induction of transfixing injury and experimental groups

The transfixing lesions were induced by first placing an Ainsworth clamp on the previous third of the tongue. The animals were anesthetized with ketamine (90 mg/kg, ip) and xylazine (10 mg/kg, ip). Soon after, the animals were positioned supine on a flat area and had the tongue exposed. With the aid of two Perry tweezers, which bored into the body to produce injury, two perforations were carried out: one in the right lobe of the tongue and one on

the left lobe to form standard, traumatic injuries. After surgery the animals were kept with water and food ad libitum in individual cages and divided into the following groups: a control group, a dexamethasone group, and a copaiba oil-resin group, each group $n = 5$. All animals were let to recover for 7 days.

Animal treatment

Twelve hours after surgery, animals assigned to the copaiba oil-resin group received 10% of the dose set by the acute oral toxicity test; the control group received a dose of Tween® 20 corresponding to the volume of the dose given to the animals in the copaiba oil-resin group. Animals of the third group were treated with dexamethasone and received a dose of 0.5 mg/kg/day [19]. All treatments were performed by intragastric gavage (oral route).

Obtaining of samples and histological procedures

After the stipulated survival time, animals were deeply anesthetized with ketamine (90 mg/kg, ip) and xylazine (10 mg/kg, ip) and euthanized by cervical dislocation. Tongues were removed and fixed in 10% formalin for at least 48 h. After this period, the specimens were washed with distilled water, dehydrated in progressive concentrations alcohol solutions, cleared in xylene, and embedded in paraffin. Five μm sections were obtained for hematoxylin and eosin (HE). Figure 1 depicts the schematic drawing of the applied methodology.

Histopathological evaluation

The qualitative and semi-quantitative analyses of HE stained slides were performed by two blinded examiners using a conventional light microscope. For qualitative analysis (descriptive evaluation) the following histopathological features were described: edema, inflammatory infiltrate, angiogenesis and muscle fibers. After that, semi-quantitative analysis (scores evaluation) of edema and

inflammatory infiltrate were performed using a grading system: Grade 0 (absent), Grade 1 (mild), Grade 2 (moderate) and Grade 3 (severe or intense) based on Wagner. 2013 [20] and Coelho. 2015 [21]. The examiners were previously calibrated and Kappa coefficient test ($p > 0.7$) were calculated to determine the concordance of score analysis.

Immunohistochemistry

For immunohistochemical staining, the samples were sectioned into 3- μm sections and placed on silanized slides. The slides were deparaffinized in xylene and hydrated in descending grades of ethanol. Antigen retrieval was performed prior to incubation of the primary antibody. The primary antibody, sources, antigen retrieval, dilutions and incubation times were as follows: CD68 (ED1, AbD Serotec, low pH solution in a water bath at 90 °C for 18 h, 1:100, 2 h). The sections were then incubated with diaminobenzidine tetrahydrochloride (DAB, Novocastra, Newcastle, UK) and counterstained with Mayer's hematoxylin. Negative controls were obtained by replacing the primary antibody with non-immune serum. The positive control were sections of human tonsil for CD68.

All immunohistochemical analysis was performed by one blinded observer of the treatment received. Five images of the wound healing area were captured at a magnification of 400 \times using a conventional light microscope (CX41RF model, Olympus Latin America, Inc., Miami, Florida, USA) coupled to a camera (QColor 5, RTV, Olympus Inc., BX51, Canada) and connected to a computer (Dimension 5150, Dell, Porto Alegre, RS, Brazil) using the QCapture software program, version 2.81 (Quantitative Imaging Corporation, Inc., Surrey, British Columbia, Canada). The images were analyzed using Image J software program (National Institute of Mental Health, Bethesda, Maryland, USA). The slides, stained with CD68, were analyzed and only the cells with cytoplasmic brown labeling were considered positive.

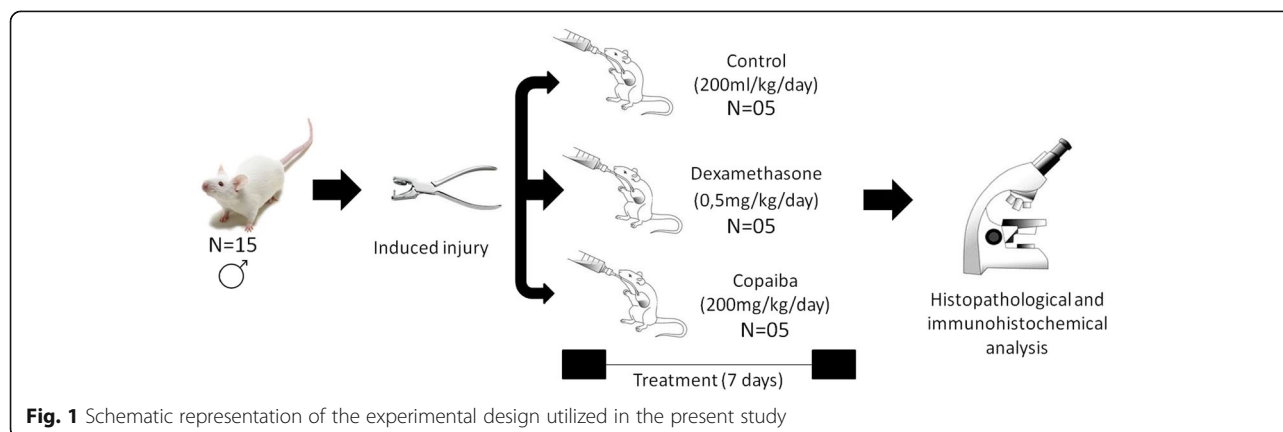


Fig. 1 Schematic representation of the experimental design utilized in the present study

Statistical analysis

The results obtained in the various assessments were entered into GraphPad Prism 5.0 software. The nonparametric Kruskal-Wallis test was used with a significance level of $p < 0.05$ for evaluation of data for scores. For quantitative evaluation of immunohistochemical assays we used ANOVA with post 1 via a Tukey test. Results were expressed textually and graphically with means and standard error (mean \pm SE).

Results

Oil-resin characterization

The copaiba oil-resin used in this research was extracted from the species, *Copaifera reticulata* Ducke, and has been characterized by Guimarães-Santos et al. in 2012 [8]. For this study, 27 components were identified with the following concentrations: δ -elemene (0.2%), cyclosativene (0.9%), α -copaene (0.5%), δ -elemene (0.2%), cyclosativene (0.9%), α -copaene (0.5%), β -elemene (3.2%), α -gurjunene (0.7%), β -caryophyllene (37.3%), trans- α -bergamotene (9.0%), aromadendrene (0.9%), epi- β -santalene (0.1%), α -

humulene + (E)- β -farnesene (5.4%), β -chamigrene (1.0%), γ -gurjunene (0.6%), γ -curcumene (0.6%), β -selinene (4.8%), α -selinene (3.0%), (Z)- α -bisabolene (1.8%), α -bulnesene (2.2%), β -bisabolene (14.5%), β -curcumene (0.4%), β -sesquiphelandrene (1.2%), (E)- γ -bisabolene (1.4%), caryophyllene oxide (0.1%), epi- β -bisabolol (0.1%), and β -bisabolol (0.2%).

Acute oral toxicity test

On the acute oral toxicity test, none of the 5 animals tested with the limit dose (2000 mg/kg/day) died or had any sign or symptom of toxicity during the 48-h test. Thus, the dose prescribed for this study was 10% of the limit dose, i.e., the copaiba oil-resin group of animals received 200 mg/kg/day and the control animals received 200 mL/kg/day of Tween 20.

Qualitative histopathological analysis

The proposed lesion induction model produced an extensive wound to the two surfaces of the tongue, reaching all the constituents of the animals' body tissue,

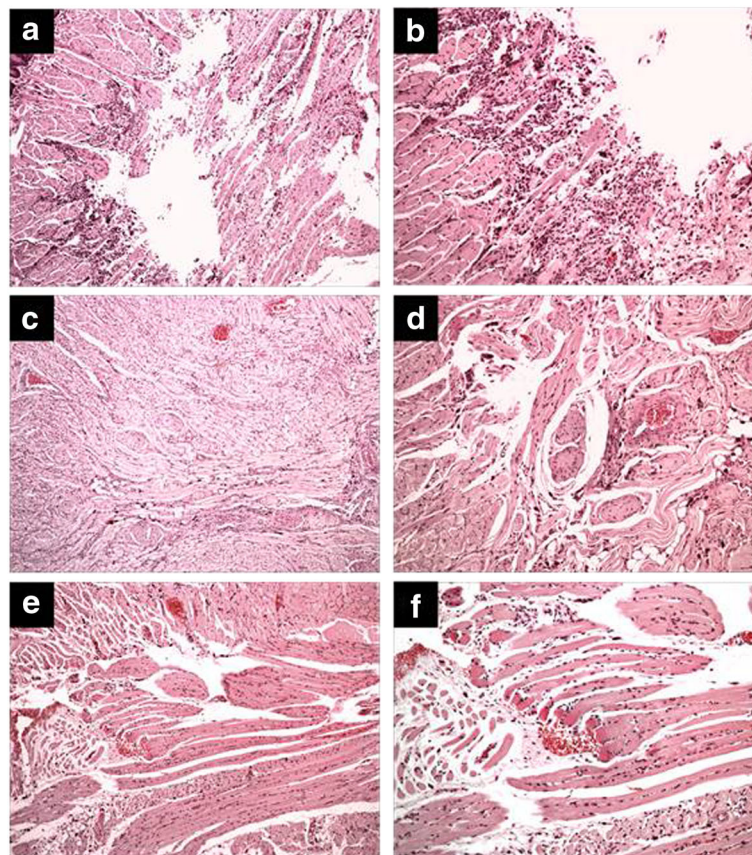


Fig. 2 Effect of treatment with copaiba oil-resin on transfixing lesions in rats' tongues stained by hematoxylin and eosin (HE). Panels (a and b) represent the control group. Panels (c and d) represent the dexamethasone group. Panels (e and f) represent the copaiba oil-resin group. It is found that the groups dexamethasone and copaiba oil-resin showed similar aspects decreasing chronic inflammatory infiltration and edema, compared to the control group

including epithelial tissue, connective tissue, and muscle tissue. The transfixing injury promoted a deep character injury.

Thus, the major differences were found in a histopathological analysis at this deepest portion of the wound, particularly in the muscle tissue of all groups.

Through qualitative analysis in HE, the control group (Fig. 2a and b) exhibited moderate chronic inflammatory infiltrate, represented by the presence of lymphocytes, plasma cells, and macrophages and accompanied by extensive edema. The formation of the angiogenesis process was also observed along with little formations of immature muscle fibers.

The dexamethasone groups (Fig. 2c and d) and copaiba oil-resin (Fig. 2e and f) showed similar aspects to each other, but when compared to the control group showed less chronic inflammatory infiltrate and greater formation of muscle fibers in the injury area. Thus, both treatments showed anti-inflammatory action and accelerated the repair in the area.

The histological sections of the dexamethasone group showed less edema, which did not occur in the control group or in the copaiba oil-resin group. Neither group appeared to have the presence of fibrosis or necrosis.

Semi-quantitative analysis of inflammatory infiltrate and edema

From the analysis score shown in Fig. 3, treatment with copaiba oil-resin in the proposed model was able to demonstrate anti-inflammatory action, it decreased the intensity of chronic inflammatory infiltrate (1.2 ± 0.20) compared to the control group (2.0 ± 0.0), and its performance was similar to the dexamethasone group (1.0 ± 0.0).

When evaluating the variable edema from the analysis score, we found treatment with the copaiba oil-resin even reduced the intensity of edema (1.8 ± 0.20) but it was not a statistically significant difference compared to the control group (2.4 ± 0.24). Treatment with dexamethasone also decreased the intensity of edema (0.25 ± 0.25) compared to the control group; however, there was no difference from the group treated with copaiba oil-resin.

Immunohistochemistry analysis

The treatment with dexamethasone and copaiba oil-resin reduced the number of CD68 positive macrophages. However, a significant reduction was only observed in the copaiba oil-resin group compared to the control group ($p = .0432$, Fig. 4).

Discussion

This study was the first to investigate the effects of copaiba oil-resin on factors that modulate inflammation of oral tissue. Research has demonstrated that copaiba oil-

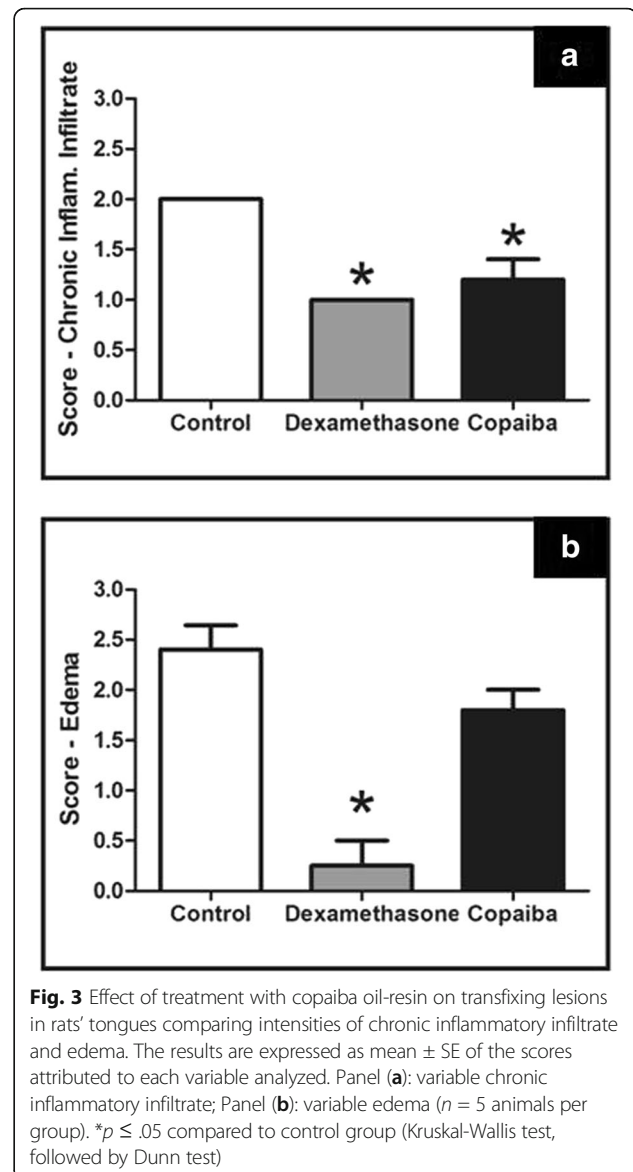


Fig. 3 Effect of treatment with copaiba oil-resin on transfixing lesions in rats' tongues comparing intensities of chronic inflammatory infiltrate and edema. The results are expressed as mean \pm SE of the scores attributed to each variable analyzed. Panel (a): variable chronic inflammatory infiltrate; Panel (b): variable edema ($n = 5$ animals per group). * $p \leq .05$ compared to control group (Kruskal-Wallis test, followed by Dunn test)

resin (*Copaifera reticulata* Ducke) could modulate the inflammatory process by decreasing the recruitment of inflammatory cells after 7 days of oral treatment.

Regeneration of integrity and tissue homeostasis after injury is a fundamental property and one of the most complex biological processes that occur during the life of all organisms. Mammals' response to injury requires a complex and dynamic interaction of numerous cellular and humoral cascades that have the purpose of performing a sequence of repair steps, comprising inflammation, tissue proliferation, and maturation of tissue [22–25].

Inflammation comprises the first phase of tissue repair where neutrophils are recruited immediately after injury and persist in large numbers through the first 48 h after the injury. Then, monocytes arise from the bloodstream and differentiate into macrophages, which phagocytize

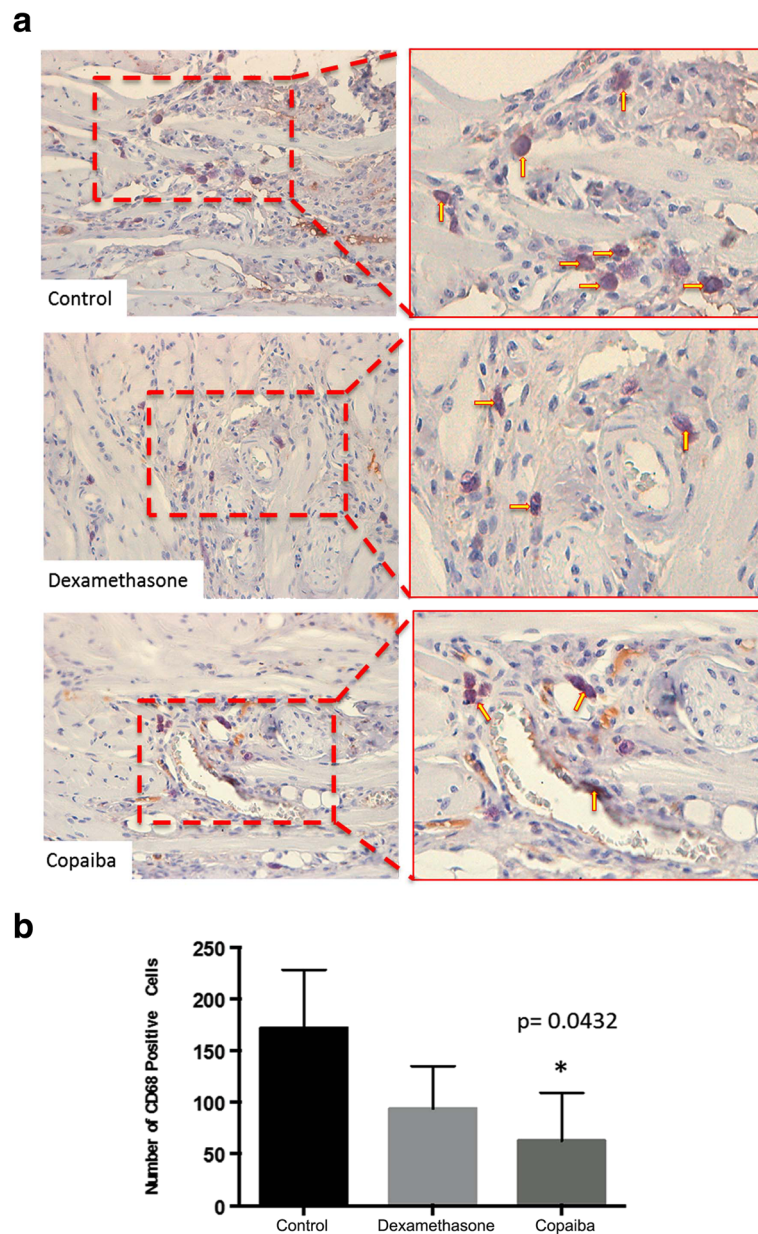


Fig. 4 Effect of treatment with copaiba oil-resin on transfixing lesions in rats' tongues comparing the CD68-positive cells. **a** Photomicrographs showing CD68-positive cells (arrows) in control, dexamethasone and oil copaiba Groups. **b** Graphic illustrating the number of CD68-positive cells in three different treatments ($n = 5$ animals per group). * $p \leq .05$ compared to control group (one-way ANOVA with Tukey's post-hoc test)

bacteria and dead cells under the influence of other cellular elements, such as lymphocytes. These inflammatory cells are crucial to the healing process [22, 23]. Thus, the model used in this study mainly assessed the chronic inflammatory infiltrate since the animal's survival period after injury was 7 days, and was, therefore, composed of lymphocytes, plasma cells, and macrophages.

The modulation of the inflammation is fundamentally important because, during the inflammatory phase, there is a release of growth factors that induce proliferation of fibroblasts with a consequent production of extracellular

matrix and myofibroblasts, which are the basis for the healing/reshuffle [22, 24].

Different therapeutic protocols, such as analgesics, corticosteroids, and anti-inflammatory agents have been tested to accelerate the wound healing process. In addition to these drugs, the pharmaceutical industry has focused research on alternative medicine, and it takes as its first ground empirical knowledge of needy populations who use nature's products as needed to treat their diseases [25–28].

In this scenario, products arising from the Amazon region, many of which have unknown composition, arise

as possible alternatives for future drug formulations. Among these, one that is most prominent is copaiba oil-resin. Copaiba oil-resin is a natural substance obtained from the trunk of the *copaifera* tree, originally from the Amazon rainforest, and has been used for over 500 years in traditional folk medicine in the region with great diversity of applications.

This natural substance is obtained by drilling the trunk of the *copaifera* tree, which belongs to the family Leguminosae-Caesalpinaceae, featuring a variety of species. One that stands out in the Amazon is *Copaifera reticulata* Ducke [2, 29, 30], the same used in this investigation.

The method of testing for acute oral toxicity, as used in our study, is among the most currently accepted in literature [26]. Although other studies have used other methods also advocated by the OECD, they observed that copaiba oil-resin intake by the rat species used in our investigation caused no acute oral toxicity, confirming our findings and, once again, demonstrating safe use of this extract by mouth [24, 25].

The lesion induction method is a model developed in our laboratory which can identify the repair process in all the extension of the organ, since the gripper Ainsworth damage all tissues that constitute tongue (epithelial tissue, connective and muscle). We can observe in the literature other types of induction of injury in the rat tongue using punch [20] and mucositis induction [21], however, neither described able to reach all tissues that constitute tongue.

Copaiba oil-resin's modulating effect on inflammation that presented in the transfixing injury in rats' tongues may be attributed to sesquiterpene β -caryophyllene. This compound represents about 40% of copaiba oil-resin's composition as reported in the literature [2]. The oil-resin used in our survey has 37% of β -caryophyllene.

The literature has shown that this high β -caryophyllene content is primarily responsible for the anti-inflammatory characteristic of copaiba oil-resin [16], as it has been reported that this compound performs selective binding and inhibiting in canabioide receptor type 2 (CB 2). The activation of CB 2 receptors are involved in stimulating the secretion of pro-inflammatory cytokines and increasing T and B lymphocyte response [31, 32].

Our results demonstrate that copaiba oil-resin reduced the number of inflammatory cells after 7 days of injury, which is similar to that found in animals treated with dexamethasone. Dexamethasone anti-inflammatory activity has been well-described in the literature and corresponds to adhesive inhibition effects and migration of leukocytes, inducing apoptosis of inflammatory cells, reduction of edema, and suppression of the production of inflammatory mediators by inhibiting phospholipase A2 and induction of anti-inflammatory cytokine IL-10 [33]. However, steroids have been associated with numerous

local and systemic side effects [34], and thus the use of other agents, such as copaiba oil-resin oil, reduces inflammation and accelerates cellular repair without causing adverse effects.

The difference in the formation of edema found in treatments with dexamethasone and copaiba oil-resin is because of differences between the two anti-inflammatory mechanisms of the treatments. However, regardless of the amount of swelling, both groups had reduced numbers of inflammatory cells and favored the formation of new fibers.

Conclusion

The results indicate that copaiba oil-resin is a natural product effective in reducing chronic inflammatory infiltrate and inhibiting macrophage activity. For not presenting effectiveness of reduction of edema, our data direct to new investigations that seek to elucidate the role of this oil-resin on other mechanisms associated with inflammation.

Abbreviations

CB 2: Canabioide receptor type; Cox-2: Cyclooxygenase-2; DAB: Diaminobenzidine tetrahydrochloride; HE: Hematoxylin and eosin; OECD: Organization for Economic Co-operation and Development; UFPA: Federal University of Pará

Acknowledgements

Rafael R. Lima is investigator from CNPq (Edital MCTI/CNPQ/Universal 14/2014). Francisco B. Teixeira and Raira Brito Silva received scholarship from Coordenação de Aperfeiçoamento de Pessoal de Nível Superior (CAPES, Brazil). Manoela D. Martins is supported by a research fellowship from Conselho Nacional de Desenvolvimento Científico e Tecnológico (CNPq, Brazil).

Funding

This research received no specific grant from any funding agency in the public, commercial, or not-for-profit sectors.

Availability of data and materials

There are no restrictions to the availability of any materials and data.

Authors' contributions

FBT and RBS performed almost all the experiments, wrote and analyzed the data and contributed equally to this work. OAL collected the plants, extracted them and analyzed the data. LPW carried out the immunoassays and wrote RSDC designed the manuscript and wrote MDM co supervised the study and approved the final manuscript. RRL designed all the research program and revised all results finding. All authors read and approved the final manuscript.

Competing interests

The authors declare that they have no competing interests.

Consent for publication

The Authors hereby consents that the Publisher publishes the manuscript in BMC Complementary and Alternative Medicine.

Ethics approval

The experimental procedures were performed in accordance with European Community (EU Directive 2010/63/EU for animal experiments) and National Institutes of Health guidelines for the care and use of laboratory animals. The study was approved by the ethical committee of the Federal University of Pará (Brazil), license number BIO-203-14. Didn't have human participation in this study.

Publisher's Note

Springer Nature remains neutral with regard to jurisdictional claims in published maps and institutional affiliations.

Author details

¹Laboratory of Functional and Structural Biology, Institute of Biological Science, Federal University of Pará, Belém 66075-900, Brazil. ²Laboratory of Biotechnology, EMBRAPA, Amazonia Oriental, Belém, PA, Brazil. ³Department of Oral Pathology, School of Dentistry, Laboratory of Bucal Pathology, Dentistry College, Federal University of Rio Grande do Sul, Porto Alegre, Rio Grande do Sul, Brazil.

Received: 26 September 2016 Accepted: 1 June 2017

Published online: 14 June 2017

References

- Giorgetti M, Negri G, Rodrigues E. Brazilian plants with possible action on the central nervous system—a study of historical sources from the 16th to 19th century. *J Ethnopharmacol.* 2007;109:338–47.
- Veiga Junior VF, Rosas EC, Carvalho MV, Henriques MGMO, Pinto AC. Chemical composition and anti-inflammatory activity of copaiba oils from *Copaifera cearensis* Huber ex Ducke. *Copaifera reticulata* Ducke and *Copaifera multijuga* Hayne - A comparative study *J Ethnopharmacol.* 2007;112:248–54.
- Herrero-Jáuregui C, Casado MA, Zoghbi MGB, Silva RCM. Chemical variability of *Copaifera reticulata* Ducke oleoresin. *Chem Biodivers.* 2011;8:674–85.
- Botelho NM, Silveira EL, Lopes LN, Santos FA, Teixeira RK, Silva TT. Copaiba oil effect under different pathways in mice subjected to sepsis. *Acta Cir Bras.* 2014;29(8):528–31.
- Dias-da-Silva MA, Pereira AC, Marin MC, Salgado MA. The influence of topic and systemic administration of copaiba oil on the alveolar wound healing after tooth extraction in rats. *J Clin Exp Dent.* 2013;5(4):e169–73.
- Dias DS, Fontes LB, Crotti AE, Aarestrup BJ, Aarestrup FM, da Silva Filho AA. Copaiba oil suppresses inflammatory cytokines in splenocytes of C57BL/6 mice induced with experimental autoimmune encephalomyelitis (EAE). *Molecules.* 2014;19(8):12814–26.
- Paiva LA, Gurgel LA, Campos AR, Silveira ER, Rao VS. Attenuation of ischemia/reperfusion-induced intestinal injury by oleo-resin from *Copaifera langsdorffii* in rats. *Life Sci.* 2004;75(16):1979–87.
- de Lima Silva JJ, Guimarães SB, da Silveira ER, de Vasconcelos PR, Lima GG, Torres SM, et al. Effects of *Copaifera langsdorffii* Desf. On ischemia-reperfusion of randomized skin flaps in rats. *Aesthet Plast Surg.* 2009;33(1):104–9.
- Yasojima EY, Teixeira RK, Houat Ade P, Costa FL, Silveira EL, Brito MV, et al. Effect of copaiba oil on correction of abdominal wall defect treated with the use of polypropylene/polyglycaprone mesh. *Acta Cir Bras.* 2013;28(2):131–5.
- Yasojima EY, Teixeira RK, Houat Ade P, Costa FL, Yamaki VN, Feitosa-Junior DJ. Copaiba oil influences ventral hernia repair with Vicryl® mesh? *Arq Bras Cir Dig.* 2015;28(3):186–9.
- Geris R, Silva IG, Silva HHG, Barison A, Rodrigues-Filho E, Ferreira AG. "Diterpenoids from *Copaifera reticulata* Ducke with Larvicidal activity against *Aedes aegypti*(L. (Diptera, Culicidae)". *Rev Inst Med trop S Paulo* 2008;50(1):25–28.
- Gomes NM, Rezende CM, Fontes SP, Matheus MF, Fernandes PD. Antinociceptive activity of Amazonian copaiba oils. *J Ethnopharmacol.* 2007;109:486–92.
- Curio M, Jacone H, Perrut J, Pinto AC, Veiga Filho VF, Silva RCB. Acute effect of *Copaifera reticulata* Ducke copaiba oil in rats tested in the elevated plus-maze: an ethological analysis. *J Pharm Pharmacol.* 2009;61:1105–10.
- Santos AO, Ueda-Nakamura T, Dias Filho BP, Veiga Junior VF, Pinto AC, Nakamura CV. "antimicrobial activity of Brazilian copaiba oils obtained from different species of the *Copaifera* genus". *Mem. Inst. Oswaldo Cruz.* 2008; 103(3):277–81.
- Guimarães-Santos A, Santos DS, Santos IR, Lima RR, Pereira A, de Moura LS, et al. Copaiba oil-resin treatment is neuroprotective and reduces neutrophil recruitment and microglia activation after motor cortex excitotoxic injury. *Evid Based Complement Alternat Med.* 2012;19:918174.
- Sachetti CG, Fascinelli ML, Sampaio JA, Lameira OA, Caldas ED. Avaliação da toxicidade aguda e potencial neurotóxico do óleo-resina de copaiba (*Copaifera reticulata* Ducke, *Fabaceae*). *Rev bras farmacogn.* 2009;19(4):937–41.
- Sachetti CG, de Carvalho RR, Paumgartten FJR, Lameira OA, Caldas ED. Developmental toxicity of copaiba tree (*Copaifera reticulata* Ducke, *Fabaceae*) oleoresin in rat. *Food Chem Toxicol.* 2011;49:1080–5.
- OECD Organization for Economic Co-operation and Development. "Acute Oral Toxicity – Up-and-Down-Procedure (UDP)". *OECD Guide 425.* 2008.
- Albano MN, Silveira MR, Danielski LG, Florentino D, Petronilho F, Piovezan AP. Anti-inflammatory and antioxidant properties of hydroalcoholic crude extract from *Casearia sylvestris* Sw. (*Salicaceae*). *J Ethnopharmacol.* 2013;147:612–7.
- Wagner VP, Meurer L, Martins MA, Danilevicz CK, Magnusson AS, Marques MM, et al. Influence of different energy densities of laser phototherapy on oral wound healing. *J Biomed Opt.* 2013;18:128002.
- Coelho FH, Salvadori G, Rados PV, Magnusson A, Danilevicz CK, Meurer L, Martins MD. "Topical *Aloe Vera* (*Aloe barbadensis* Miller) Extract Does Not Accelerate the Oral Wound Healing in Rats". *Phytother Res.* 2015;16:10.1002/ptr.5352.
- Mandelbaum SH, Santis EP, Mandelbaum MHS. Cicatrização: conceitos atuais e recursos auxiliares-Parte I. *An Bras Dermatol.* 2003;78(4):393–410.
- Gurtner GC, Werner S, Barrandon Y, Longaker MT. Wound repair and regeneration. *Nature.* 2008;453(15):314–21.
- Mendonça RJ, e Coutinho-Neto J. "Aspectos Celulares da Cicatrização". *An Bras Dermatol.* 2009;84(3):257–62.
- Eming SA, Hammerschmidt M, Krieg T, Roers A. Interrelation of immunity and tissue repair or regeneration. *Semin Cell Dev Biol.* 2009;20:517–27.
- Little JW, Minn M. Complementary and alternative medicine: impact on dentistry. *Oral Surg Oral Med Oral Pathol Oral Radiol.* 2004;98:137–45.
- Xie W, Du L. Diabetes is an inflammatory disease: evidence from traditional Chinese medicines. *Diabetes Obes Metab.* 2011;13:289–301.
- Recio MC, Andújar I, Rios JL. Anti-inflammatory agents from plants: progress and potential. *Curr Med Chem.* 2012;19:2088–103.
- Martins MD, Marques MM, Bussadori SK, Martins MA, Pavesi VC, Mesquita-Ferrari RA, et al. Comparative analysis between *Chamomilla recutita* and corticosteroids on wound healing an in vitro and in vivo study. *Phytother Res.* 2009;23(2):274–8.
- Pieri FA, Mussi MC, Moreira MAS. Copaiba oil (*Copaifera* sp): history, extraction, industrial applications and medicinal properties. *Rev bras plantas med.* 2009;11(4):465–72.
- Custódio DL, Veiga Junior VF. True and common balsams. *Rev bras farmacogn.* 2012;22(6):1–15.
- Gertsch J, Leonti M, Raduner S, Racz I, Chen JZ, Xie XQ, et al. Beta-caryophyllene is a dietary cannabinoid. *Proc Natl Acad Sci U S A.* 2008;105(26):9099–104.
- Bento AF, Marcon R, Dutra RC, Claudino RF, Cola M, Leite DFP, et al. B-Caryophyllene inhibits dextran sulfate sodium-induced colitis in mice through CB2 receptor activation and PPARγ pathway. *Am J Pathol.* 2011;178(3):1153–66.
- Goulding NJ. The molecular complexity of glucocorticoid actions in inflammation — a four-ring circus. *Curr Opin Pharmacol.* 2004;4:629–36.

Submit your next manuscript to BioMed Central and we will help you at every step:

- We accept pre-submission inquiries
- Our selector tool helps you to find the most relevant journal
- We provide round the clock customer support
- Convenient online submission
- Thorough peer review
- Inclusion in PubMed and all major indexing services
- Maximum visibility for your research

Submit your manuscript at
www.biomedcentral.com/submit

