

Medical Sciences. In the article "Epstein-Barr virus-transformed pro-B cells are prone to illegitimate recombination between the switch region of the μ chain gene and other chromosomes" by Ender Altiok, George Klein, Lore Zech, Masatsune Uno, Barbro Ehlin Henriksson, Shosh Battat,

Yasushi Ono, and Ingemar Ernberg, which appeared in number 16, August 1989, of *Proc. Natl. Acad. Sci. USA* (86, 6333-6337), the authors request that the following corrections be noted. The author and affiliation lines should read as follows.

ENDER ALTIOK*†, GEORGE KLEIN*, LORE ZECH‡, MASATSUNE UNO*§, BARBRO EHLIN HENRIKSSON*, SHOSH BATTAT¶, MASAYUKI OTSU, YASUSHI ONO§, AND INGEMAR ERNBERG*||**

Departments of *Tumor Biology and †Medical Cell Genetics, Karolinska Institute, Box 60400, S-104 01, Stockholm, Sweden; ‡Department of Microbiology, Nihon University School of Medicine, Tokyo 173, Japan; §Laboratory of Immunohematology, Tissue Typing Unit, Hadassah University Hospital, 91010 Jerusalem, Israel; and **Department of Bacteriology, Tohoku University of Medicine, Sendai 980, Japan

On p. 6333, Fig. 1 should be as follows. In particular, the cultivation time of FLEB 14-14 at the time of the detection of the rearrangements should be 52 months and the IGH configuration should be "R."

On p. 6334, Fig. 2 legend, the lane designations should be as follows.

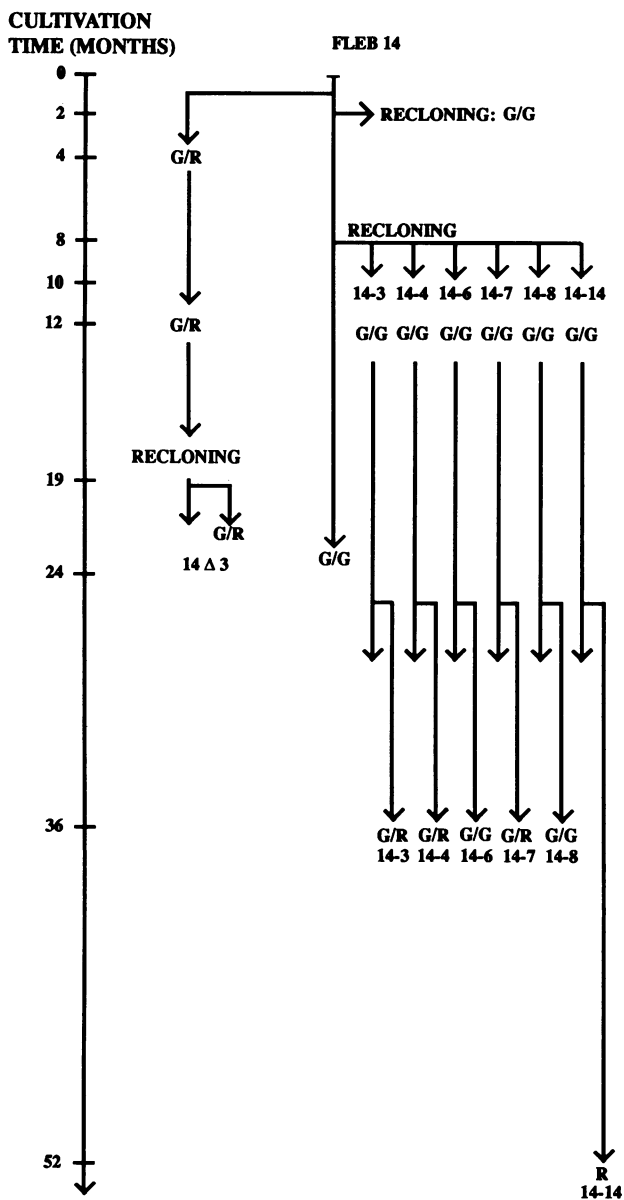


FIG. 1. Origin of the FLEB 14 sublines. IGH gene configuration was examined during culturing by Southern blot analysis of *Bam*HI-digested DNA, followed by *C μ* hybridization. G, germ-line fragment; R, rearranged fragment.

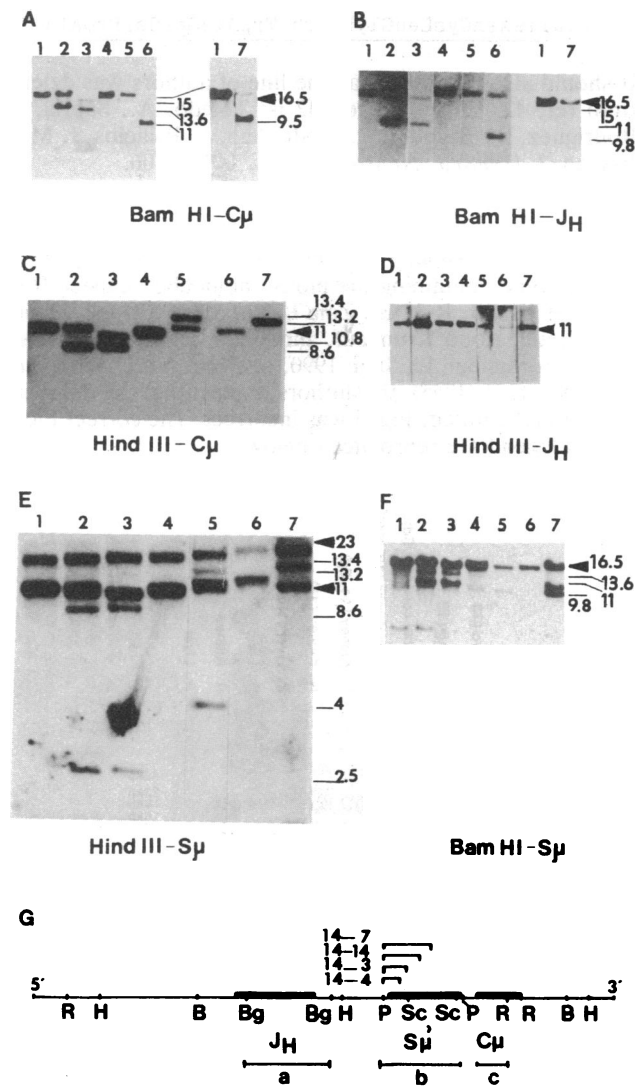


FIG. 2. Analysis of the IGH region in six FLEB 14 sublines by Southern blot. The endonuclease used for digestion and the probe used are indicated. (A and B) Lanes: 1, fetal liver; 2, 14-3; 3, 14-4; 4, 14-6; 5, 14-8; 6, 14-14; 7, 14-7. (C-F) Lanes: 1, fetal liver; 2, 14-3; 3, 14-4; 4, 14-6; 5, 14-7; 6, 14-8; 7, 14-14. Germ-line fragments are indicated by arrowheads; rearranged fragments are indicated by tick marks and sizes (kb). (G) Germ-line IGH map of FLEB 14 sublines and the location of translocation breakpoints. The estimated location of breakpoints in each subline is indicated by a horizontal bar over the *S μ* region. The exons are shown by solid rectangles. Probes are shown below each region. Probes: a, *J H* ; b, *S μ* ; c, *C μ* . R, *Eco*RI; H, *Hind*III; B, *Bam*HI; P, *Pst*I; Bg, *Bgl*II; S, *Sac*I. All *Pst*I and *Eco*RI sites are not shown on the map.