

Review Article

Innate Immune Response in Kidney Ischemia/Reperfusion Injury: Potential Target for Therapy

Aleksandra Kezić,^{1,2} Natasa Stajic,^{1,3} and Friedrich Thaiss⁴

¹School of Medicine, University of Belgrade, Belgrade, Serbia

²Clinic for Nephrology, Clinical Center of Serbia, Belgrade, Serbia

³Institute of Mother and Child Healthcare of Serbia “Dr Vukan Čupić”, Belgrade, Serbia

⁴Third Medical Department of Clinical Medicine, University Hospital Hamburg Eppendorf, Hamburg, Germany

Correspondence should be addressed to Aleksandra Kezić; aleksandrakezic@yahoo.com

Received 24 March 2017; Accepted 17 May 2017; Published 6 June 2017

Academic Editor: Bibo Ke

Copyright © 2017 Aleksandra Kezić et al. This is an open access article distributed under the Creative Commons Attribution License, which permits unrestricted use, distribution, and reproduction in any medium, provided the original work is properly cited.

Acute kidney injury caused by ischemia and subsequent reperfusion is associated with a high rate of mortality and morbidity. Ischemia/reperfusion injury in kidney transplantation causes delayed graft function and is associated with more frequent episodes of acute rejection and progression to chronic allograft nephropathy. Alloantigen-independent inflammation is an important process, participating in pathogenesis of injurious response, caused by ischemia and reperfusion. This innate immune response is characterized by the activity of classical cells belonging to the immune system, such as neutrophils, macrophages, dendritic cells, lymphocytes, and also tubular epithelial cells and endothelial cells. These immune cells not only participate in inflammation after ischemia exerting detrimental influence but also play a protective role in the healing response from ischemia/reperfusion injury. Delineating of complex mechanisms of their actions could be fruitful in future prevention and treatment of ischemia/reperfusion injury. Among numerous so far conducted experiments, observed immunomodulatory role of adenosine and adenosine receptor agonists in complex interactions of dendritic cells, natural killer T cells, and T regulatory cells is emphasized as promising in the treatment of kidney ischemia/reperfusion injury. Potential pharmacological approaches which decrease NF- κ B activity and antagonize mechanisms downstream of activated Toll-like receptors are discussed.

1. Introduction

Ischemia/reperfusion injury (IRI) is a leading cause of acute kidney injury (AKI), which is still associated with high morbidity, mortality, and increased costs of treatment in both adult and pediatric population [1, 2]. IRI represents an important risk factor for progression of chronic kidney disease (CKD), which is defined as abnormalities of kidney structure or function, present for more than 3 months [3, 4]. Kidneys are subjected to IRI in different medical conditions, characterized by the interruption of the renal blood flow followed by the subsequent restoration of perfusion, such as vascular and cardiac surgery, trauma, circulatory arrest with resuscitation, and kidney transplantation. IRI after kidney transplantation elicits cascades of pathophysiology processes that result in delayed graft function (DGF) and alloimmune-

specific response to the graft, eventually leading to acute rejection and progression to chronic allograft nephropathy (CAN) [5].

Initial hypoxic injury with subsequent production of reactive oxygen species (ROS), due to reoxygenation, initiates events in IRI, leading to apoptosis, necrosis, and a profound inflammatory response [6]. Mitochondria, as the major site of ROS production, are subjects of potential treatment of kidney IRI using mitochondria-targeted antioxidants [7]. Besides ROS, reactive nitrogen species (RNS), such as nitric oxide, are produced in kidney IRI via the activity of inducible NO synthase (iNOS), which is considered as one of inflammatory mediators [8]. Numerous experimental studies have shown an increased iNOS activity in kidney IRI [9–11]. iNOS and a great array of proinflammatory cytokines, such as TNF- α , IL-1 β , IL-6, and chemokines, are mainly elicited by

the action of transcription factors NF- κ B. This inflammatory response is sterile but shares many similarities with the immune response and inflammation provoked by pathogens [12]. Evidence supporting immunological mechanisms involved in pathogenesis of IRI has accrued in recent years, pointing to the activation of both innate and acquired immune response [13–17]. In early phase of IRI, inflammation is alloantigen independent and is characterized by activation of not just only classical cells belonging to what we call the immune system, such as macrophages, dendritic cells, and lymphocytes, but also resident renal cells, such as endothelial cells and tubular epithelial cells, which are extremely sensitive to oxidative stress. Interplay and time-dependent changes between proinflammatory and anti-inflammatory mediators, secreted by kidney resident cells and recruited inflammatory cells, determine the faith of renal injury, namely, tissue repair or progression to CKD [18, 19].

Numerous studies conducted so far do not give precise answers on how to treat or prevent kidney IRI implying inflammation and mediators of inflammation as potential target for therapy. In this article, we will discuss some features of the innate immune response in kidney IRI, emphasizing the optimal and potentially the most successful approach to treat kidney IRI based on so far achieved results and knowledge.

2. The Role of Endothelial and Tubular Epithelial Cells in Inflammation Provoked by IRI

Kidney ischemia affects primarily the structure and function of tubular epithelial cells, leading to apoptosis and/or necrosis, followed by interstitial inflammation and microvasculopathy during reperfusion, that accentuate the injury. At the beginning of reperfusion, a cortical circulation is established, but in the outer part of medulla, hypoperfusion still persists and is characterized by the congestion of peritubular capillaries that show swelling of endothelial cells, increased paracellular permeability, and increased expression of adhesive molecules, such as intercellular adhesion molecule 1 (ICAM-1) and E- and P-selectins, and leukocyte accumulation with platelet aggregates [15, 20–22] (Figure 1). This *no reflow* phenomena are caused by endothelial dysfunction that is characterized by increased vasoconstriction and decreased synthesis of vasodilatory substances like NO [23, 24]. ICAM-1 expression increases by 1 hour after IRI and accelerates neutrophil adhesion and migration in perivascular tissue [20]. Endothelial cells also increase the expression of chemokine fractalkine (CX3CL1) that is a ligand for receptor CX3CR1, significantly expressed on macrophage membrane and important for their migration from the blood vessels into the interstitial tissue [25].

Ischemia provokes a massive release of compounds from the damaged tissue called danger-associated molecular patterns (DAMPs), such as hyaluronic acid, fibronectin, heat shock proteins (HSP), and DNA which activate Toll-like receptors (TLR) 2, 4, and 5, the evolutionary conserved family of transmembrane receptors that are a type of the pattern

recognition receptor (PRR) [26]. The activation of PRR may induce both death signaling pathway and the production of proinflammatory cytokines [27]. When engaged, TLR elicit the production of a great array of proinflammatory cytokines and chemokines, such as TNF- α , IL-1 β , IL-6, CCL2, MIP-2, and chemokines produced by keratinocytes (KC), further accompanied by neutrophil and macrophage infiltration [16, 17, 28, 29]. Transduction of signals after TLR activation depends on several adaptive proteins, among which MyD88 is the most important, resulting in activation of transcription factor NF- κ B, with subsequent production of proinflammatory cytokines and chemokines [28, 29]. Besides macrophages and dendritic cells, tubular epithelial cells constitutively express TLR2 and TLR4, and this expression is increased during kidney IRI [28–30] (Figure 1). It has been shown that renal TLR2 signaling contributes to the acute kidney injury and inflammation during IRI [31]. TLR4 deficiency on kidney parenchyma cells prevented the increase of chemokine and proinflammatory cytokine production and neutrophil and macrophage accumulation in experimental kidney IRI model [29]. According to those experimental results, one can suppose that inhibitors of TLR signaling could be effective in preventing sterile inflammation induced by IRI. Recently, it has been shown that mice subjected to kidney IRI and treated with TJ-M2010-2, which inhibited MyD88 homodimerization, had better survival rate than nontreated animals [32]. Additionally, treatment with TJ-M2010-2 markedly attenuated inflammatory response and ameliorated tubular interstitial fibrosis in mice subjected to kidney IRI [32]. Human studies implicating TLR in ischemic AKI have not been conducted so far, but there are some studies investigating TLR4 antagonist TAK-242 in other clinical conditions, such as sepsis and shock [33]. Based on experimental studies confirming TLR role in kidney IRI, translational approaches using TLR antagonists in kidney IRI remain promising.

Another role of tubular epithelial cells in innate immune response is represented by the modulation of complement system. A unique feature of complement system in kidney IRI is that activation occurs predominantly by the alternative pathway [34]. The activation of complement by an alternative pathway is a prerequisite for the production of CXC chemokines. Tubular epithelial cells express a complement inhibitor called Crry on basolateral membrane. During IRI, there is Crry redistribution that allows C3 deposition and complement activation by the alternate pathway [35]. These events elicit production of keratinocyte-derived chemokine (KC or CXCL1) and MIP-2 (CXCL2) that attract neutrophils and macrophages to the kidney tissue. Selective inhibition of the alternative pathway protects the kidney from ischemic injury [36, 37].

3. Neutrophils, Macrophages, and Dendritic Cells in Kidney IRI

As early as 30 minutes after the reperfusion, neutrophils attach to activated endothelium in peritubular capillaries and accumulate in kidney interstitium, both in animal models and in human AKI [6]. Neutrophil-endothelial

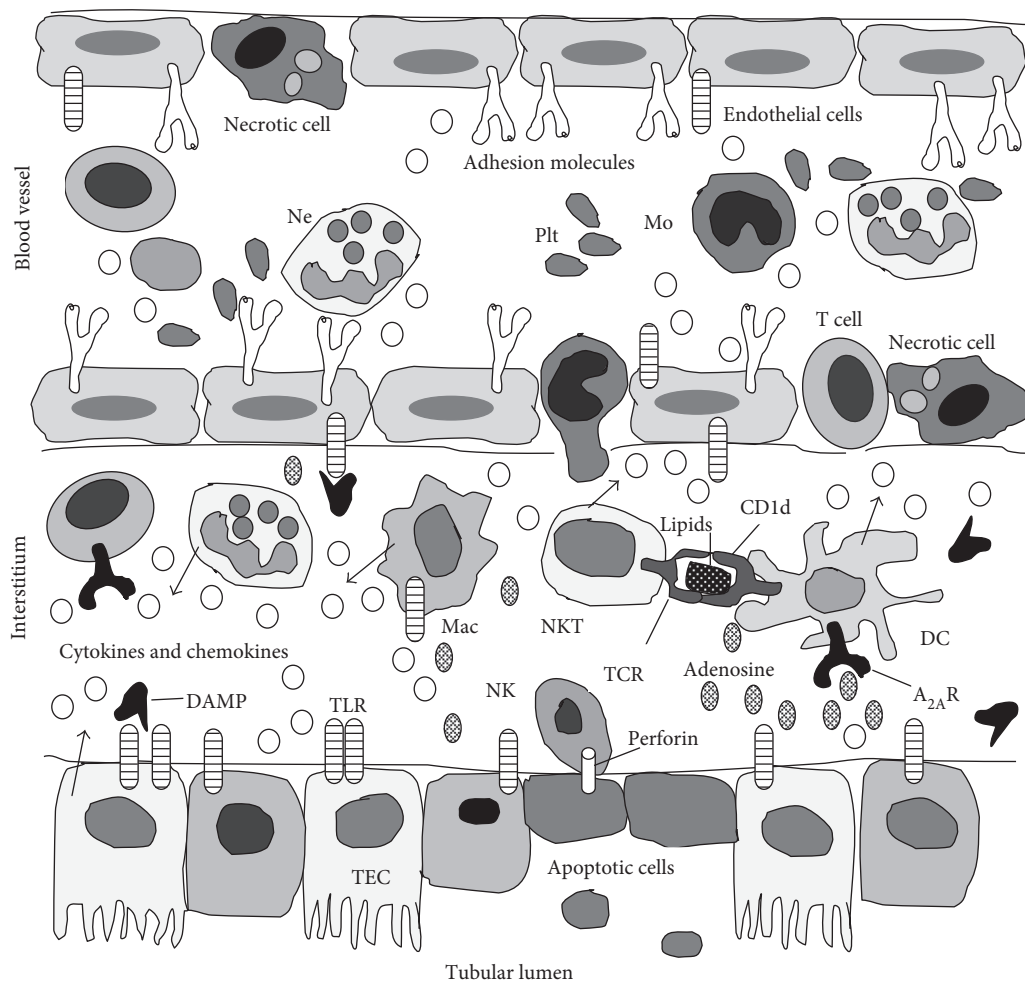


FIGURE 1: Inflammation in kidney ischemia/reperfusion injury. During reperfusion, immune cells increase their adhesiveness and adhere to activated endothelium and some of them migrate into the interstitium, continuing the inflammation together with the resident renal immune cells, by secretion of numerous cytokines, chemokines, oxygen-free radicals, complement, and other mediators. Among other mediators there is adenosine that downregulates inflammation, acting via $A_{2A}R$ expressed on dendritic cells and T cells. $A_{2A}R$: adenosine receptor; CD1d: glycoprotein presenting lipids and glycolipids to NKT; DAMP: danger-associated molecular patterns; DC: dendritic cell; Mac: macrophage; Mo: monocyte; Ne: neutrophil; NK: natural killer cell; NKT: natural killer T cell; Plt: platelet; TCR: T cell receptor; TEC: tubular epithelial cell; TLR: Toll-like receptor.

adhesion is mediated by lymphocyte function-associated antigen- (LFA-) 1 (CD11a/CD18) that is a counterreceptor for ICAM-1 (CD54). By producing reactive oxygen species, myeloperoxidase and cytokines such as IL-17, neutrophils aggravate kidney injury [38]. Neutrophil-depleted mice, mice treated by anti ICAM-1 antibody, and ICAM-1 knockout mice were protected against kidney IRI [14, 39]. The detrimental role of neutrophils in pathogenesis of acute kidney injury was shown in experimental mice models, but was not confirmed completely in humans. A phase I of human trial investigating the use of anti-ICAM-1 monoclonal antibody in 18 recipients of cadaveric renal transplants showed lower rates of DGF [40], but a randomized controlled trial failed to show beneficial effects of ICAM-1 blocking on the rate of DGF [41].

Macrophages infiltrate the kidney just after neutrophils transmigrate into it. Signal transduction pathways elicited by activation of CCR2 and CX3CR1 seem critical in

macrophage migration process, although CCR1 pathway is also involved [42–44]. CCR2-deficient mice were protected from kidney IRI and showed reduced kidney macrophage infiltration [44]. CX3CR1 deficiency and treatment with a CX3CR1 blocking antibody protected kidneys from IRI [25]. In the early phase of innate immune response, macrophages and dendritic cells contribute to tissue damage by producing a great array of chemokines and proinflammatory cytokines (TNF- α , IL-6, CCL2, CCL5, IL-12, and IL-23) [45–47]. In addition, dendritic cells presenting glycolipids by CD1d molecules to natural killer T cells (NKT), and making contact with NKT by CD40-CD40L interaction, activate NKT to produce IFN- γ , a powerful stimulator of macrophages, thereby amplifying the innate immune response [47–49] (Figure 1). Macrophages and dendritic cells are a heterogeneous population of cells that are capable of inducing “sterile” inflammation following reperfusion. CD11c⁺ MHCII⁺ dendritic cells represent the

most abundant leukocytes subset in kidneys [50]. Their increased number has been found in transplanted kidneys in rat experimental model and human transplanted kidney specimens, confirming the role of dendritic cells in DGF and acute rejection [51, 52]. Precursors of dendritic cells and macrophages are blood monocytes, which patrol and monitor the endothelium. “Resident” monocytes characterized as $CCR2^-CX3CR1^{high}GR-1^-Ly6C^-$ migrate into the tissue where they differentiate into resident macrophages and dendritic cells, whereas “inflammatory” monocytes defined as $CCR2^+CX3CR1^{low}GR-1^+Ly6C^{high}$ are recruited to injured, inflamed tissue and differentiate into active, “inflamed” macrophages and dendritic cells [48, 53, 54]. This differentiation is influenced by prevailing local microenvironment, for example, cytokine milieu. $TNF-\alpha$, IL-4, and IL-15 skew monocyte differentiation towards dendritic cells, whereas $IFN-\gamma$ and IL-6 direct monocyte differentiation towards macrophages [48, 55–58]. “Inflamed” macrophages, called M1 type, produce NO and secrete proinflammatory cytokines like IL-1 α , IL-6, $TNF-\alpha$, and IL-12, thereby causing tissue damage [59, 60]. Also, the macrophage phenotype switch parallels the course of inflammation and repair process. While M1-type macrophages play proinflammatory role, M2-type macrophages are generally believed to play prorepair role, have high phagocytosis activity, drive Th2 immune response, and are generated when monocytes are exposed to IL-4, IL-13, immune complexes, or IL-10 [61–64].

Depletion of kidney and spleen macrophages using clodronate liposomes before IRI prevents AKI, while adoptive transfer of macrophages restored the AKI response [65, 66]. On the contrary, in the recovery phase of IRI, macrophages appear essential for appropriate tissue repair, and using clodronate liposomes in that phase is deleterious for the kidney tissue [65, 66]. Those data are in line with the protective role of M2-type macrophages in appropriate resolution and tissue repair. Also, treatment of mice that are transgenic for human diphtheria toxin receptor (DTR) by diphtheria toxin (DT) prior to kidney IRI kills primarily $CD11c^+$ DCs, leading to significantly lower rise in plasma creatinine in those animals, and less tubular cell necrosis, in comparison to DT negative or mutant DT-treated wild-type control mice [48]. These experiments provide strong evidence for the participation of dendritic cells in early response in kidney IRI. Therapeutic interventions in ischemic AKI targeting dendritic cells could be promising in the future. In this regard, Li and coworkers found that mice deficient in the adenosine receptor $A_{2A}R$ only on $CD11c^+$ DCs had accentuated inflammation and significant worsening of kidney function, while treatment by selective $A_{2A}R$ agonist ATL313 protected the kidneys [67]. Adenosine mediates anti-inflammatory action in inflamed tissues [68]. The hypoxia is associated with a high levels of extracellular adenosine that activate Gs-coupled A_{2A} and/or A_{2B} (A_{2BR}) adenosine receptors on the surface of surrounding immune cells leading to increased intracellular cAMP concentration [69]. One of possible mechanism implicated in immunosuppressive effect of $A_{2A}R$ activation is inhibition of $NF-\kappa B$ pathway downstream of immunoreceptors by elevated intracellular cAMP [70].

In experiments conducted in $A_{2A}R$ -deficient mice, it has been shown that increased transcription of proinflammatory cytokines was associated with enhanced activity of the $NF-\kappa B$ [71]. $A_{2A}R$ inhibits TLR-induced transcription of proinflammatory cytokines in vivo. Also, $A_{2A}R$ down-regulate the cytokine and chemokine transcripts in kidney and liver tissues in ischemia-reperfusion injury [72, 73]. The administration of DCs treated ex vivo with an $A_{2A}R$ agonist protected the kidneys of WT mice in IRI [67]. This treatment was effective in the prevention of IRI, but there were no effects if the treatment started 24 hours after the IRI induction. A key mechanism, by which adenosine-mediated DC cell therapy is successful in AKI, appears to be suppression of $IFN-\gamma$ production by NKT and increased production of anti-inflammatory cytokine IL-10 [67]. Also, the role of $CD4^+$ T cells has been implicated in the protective effects of $A_{2A}R$ agonist ATL146e on ischemia-reperfusion damage in the kidney [74]. The beneficial effect following $A_{2A}R$ activation on $CD4^+$ T cells resulted in decreased $IFN-\gamma$ production and neutrophil recruitment.

Another approach is the development of sphingosine 1-phosphate-3 receptor (S1P3R) antagonist. Sphingosine 1-phosphate (S1P) is a major sphingolipid metabolite that is the ligand for a family of five G-protein-coupled receptors (S1PRs) with diverse cellular signaling responses [75]. The different biological processes, such as immune response, cell migration, and angiogenesis, depend on the pattern of S1PR expression and the different downstream signaling molecules [75]. Depending on the DC maturation status in mouse, the different expression profile of S1PRs can be found including S1P1 and S1P3. Mature DCs express higher levels of S1P3 mRNA compared with immature DCs [76]. Via S1P3 but not S1P1, S1P regulates migration and endocytosis of mature murine DCs [76]. The other authors accentuate the significance of both S1P3 and S1P1 in migration of mature DCs to S1P [77]. Mice that had S1P3-deficient dendritic cells were protected from IRI [78]. These S1P3-deficient DCs displayed an immature phenotype and activated the Th2/IL-4 pathway in NKT cells. If S1P3-deficient DCs were administered to mice 7 days prior to or 3 h after IRI induction, those animals were protected from IRI [78]. These findings support the development of selective S1P3 antagonists that can be used for tolerating DCs in cell-based therapy or in systemic administration for the prevention and treatment of IRI. The mechanism of S1P3R blockade is a decreased activity of $NF-\kappa B$. Dendritic cells from $S1pr3^{-/-}$ mice have significantly lower translocation of $NF-\kappa B$ to the nucleus. DC maturation and immunostimulatory activity, that is, expression of costimulatory molecules (CD40/80/86) are driven by $NF-\kappa B$ -dependent gene transcription [79, 80]. As a result, $S1PR3^{-/-}$ dendritic cells are unable to induce an inflammatory cytokine response.

4. Natural Killer T Cells and T Lymphocytes in Kidney IRI

Natural killer T cells (NKT) with dendritic cells are considered the most important link between the innate and acquired immunity. NKT represent a unique T cell

population, possessing a natural killer (NK) cell-associated marker NK1.1 (CD161), and a T cell receptor (TCR), that does not recognize peptides presented by MHC I or MHC II molecules [81]. These cells recognize lipids and glycolipids presented by CD1d molecules [82]. The best-known subset of CD1d-dependent NKT cells is type I or invariant NKT (iNKT) cells, known for expressing invariant T-cell receptor (TCR) α chain [83]. After the recognition of those molecules, iNKT produce a significant amount of proinflammatory cytokines of Th1 type (IFN- γ , TNF- α) and Th2 type (IL-4, IL-13) [83, 84]. The infiltration of these cells in the kidney starts even 30 min after the IRI induction, and maximal IFN- γ production is achieved 3 h following reperfusion [47]. iNKT directly regulate and amplify the function of dendritic cells and indirectly the function of T cells, thereby linking the innate and acquired immunity. The importance of iNKT in pathogenesis of IRI is corroborated by the fact that the blockade of iNKT using anti-CD-1d antibody or anti-NK1.1 antibody prevents AKI following IRI [47].

Numerous studies have shown the importance of CD4⁺ T cells functioning in the early phase of IRI with other cells in the innate immune response. Kinetic analysis showed significant infiltration of CD4⁺ T cells in kidneys even 1 hour after the IRI induction [85]. Mice deficient in T cells (“*nu/nu*” mice) are protected from kidney IRI, but the injury is induced if the adoptive transfer of CD4⁺ T cells has been made to those mice [85]. Interestingly, experiments with *Rag1*^{-/-} mice, which lack both T and B cells, found no protection from AKI induced by ischemia [86]. These observations suggest either the important role of NK cells or another type of cells belonging to the innate immunity in pathogenesis of kidney IRI, or that complex interactions between B and T cells may occur in kidney IRI, also implying protective roles of some immune cells in IRI. NK cell depletion in wild-type C57BL/6 mice was protective in kidney IRI implying the important role of NK cells [87]. It has been shown that NK cells can directly kill tubular epithelial cells, contributing substantially to kidney IRI (Figure 1) [87].

T cells migrate in kidney tissue by CD28-B7-1 interaction. Endothelial B7-1 expression on ascendant parts of vasa recta was found in human kidneys after ischemia [88]. The treatment of animals with monoclonal antibodies to B7-1 reduced kidney injury caused by ischemia [89]. Flow cytometry of kidney lymphocytes, detected 24 hours after the induced IRI, detected an increased number of T cells producing IFN- γ and TNF- α [90]. The adoptive transfer of CD4⁺ T cells deficient in CD28 expression or IFN- γ secretion has failed to reconstitute kidney IRI in *nu/nu* [85]. These results implicate the significance of Th1 cells for pathogenesis of IRI. The importance of Th1 cells in kidney IRI was confirmed by CCR5 blockade, the receptor for chemokine CCL5, which is predominantly expressed on Th1 cells [91]. The blockade of CCR5 by neutralizing the antibody protected mice from kidney IRI [91]. CXCR3 is also expressed on Th1 cells. CXCR3 “*knock-out*” mice subjected to kidney IRI had better survival rate, better kidney function and decreased tubular necrosis, and inflammatory cell infiltrate, compared to wild-type mice [92]. Also, the detrimental role of Th17 cells in pathogenesis of kidney IRI has recently been

confirmed [93, 94]. The intricate role of NF- κ B has been implicated in the induction of Th17 lineage. The differentiation of Th17 cell is driven by NF- κ B pathway activation through c-Rel induction of RAR-related orphan receptor gamma (ROR γ 1 and ROR γ 2) expression [95, 96]. Other studies showed anti-inflammatory role for NF- κ B kinases IKK2 through the inhibition of “classical” pathway activation [93, 97, 98]. The deletion of the IKK2 or NEMO in lymphocytes caused more tubular damage and Th17 cell infiltration, comparing to CD4^{cre} mice after renal IRI induction [93]. It has been proposed that noncanonical NF- κ B activation directs the development of Th17 cell immune response that is inhibited by the IKK2-mediated canonical NF- κ B pathway [93].

On the contrary, Th2 cells and T regulatory (Treg) cells seem to be protective in IRI. Mice which lack of IL-4, mediator of Th2 response, have significantly greater kidney ischemic injury, compared to wild type, and pointing to protective role of Th2 cells [99]. Treg cells are characterized by CD25 expression and the activity of transcription factor called “*forkhead box P3*” (FoxP3). Treg cells produce anti-inflammatory cytokines IL-10 and TGF- β and modulate the immune response. IKK2 activity and NF- κ B pathway play a critical role in peripheral Treg cell proliferation and maturation [100]. In the previously mentioned experimental model of kidney IRI in mice which had deleted IKK2 or NEMO in lymphocytes (CD4^xIKK2 ^{Δ} and CD4^xNEMO ^{Δ} mice), Treg cells were significantly reduced [93]. It has been shown that the depletion of CD4⁺CD25⁺ Treg cells by anti-CD25 antibody did not influence the early phase of IRI, but caused more necrosis, measured on day 3 after the induced IRI, suggesting a beneficial role of Treg cells in the recovery phase [101]. Treg cells become a promising candidate for cell therapy, since these cells are effective even when administered 24 hours after the ischemic insult [102], while already mentioned therapy by adenosine modified dendritic cells is effective if it is administered up to 6 hours after the beginning of ischemia.

This therapeutic option by Treg cells is limited by difficulties arising from isolating and expanding desirable Treg cells. Some investigators used an alternative approach with a pharmacologic agent to stimulate Treg cells [103]. Pretreatment of mice with the sphingosine N,N-dimethylsphingosine (DMS) increases both tissue-infiltrating T effectors (CD4⁺Foxp3⁻) and Treg (CD4⁺Foxp3⁺) cells and ameliorates IRI in experimental model of renal IRI. The administration of the anti-CTLA-4 or anti-CD25 monoclonal antibodies, which are Treg cells suppressing agents, abolished DMS protective effect suggesting a key role of Treg cells in DMS-induced renoprotection. These results point to DMS as the Treg cells recruiting drug for the treatment and prevention of kidney ischemic injury. Ex vivo expanded human Treg cells had beneficial effects in a model of transplant atherosclerosis, indicating that this way of treatment is feasible in the setting of kidney IRI [104]. Another approach to enhance Treg cell function in kidney IRI is increasing of FoxP3 expression, the key transcription factor for Treg cell differentiation, by using pharmacological inhibitors of histone/protein deacetylases,

TABLE 1: Potential pharmacological approaches targeting immunological mechanisms in ischemia/reperfusion injury.

Target	Mechanism	Drug
TLR	Antagonists of TLR	TAK242 TJ-M2010-2
NF- κ B	Decreased degradation of NF- κ B inhibitory protein I κ B α	Proteasome inhibitor (Lactacystin, PS519)
Dendritic cells	A _{2A} R agonists	ATL313 ATL146e
Treg cells	Expansion of Treg cells	(i) Sphingosine N,N-dimethylsphingosine (ii) Histone/protein deacetylases inhibitors (iii) A2aR agonists

which has been effective in treating experimentally induced inflammatory bowel disease and in improving cardiac and islet graft survival in mouse transplantation models [105]. The previously mentioned immunosuppressive effect of dendritic A_{2A}R stimulation has been approved in population of Treg cells. A_{2A}R stimulation expanded CD4(+) CD25(+) FoxP3(+) cells and increased their immunosuppressive activity [106]. This fact potentiates the role of adenosine, that is, A_{2A}R agonists in T cell and DC immunomodulation and IRI treatment. Summarized potential pharmacological approaches in kidney IRI are depicted in Table 1.

5. The Role of NF- κ B in Kidney IRI

So far, observed data implicate NF- κ B as one of the key players in pathogenesis of IRI [107–110]. A large body of evidence implicates NF- κ B in the production of reactive oxygen species (ROS), chemokines, cytokines, and in the control of pro- and antiapoptotic signaling, seemingly very important in the pathogenesis of IRI [107, 111–113]. NF- κ B functions as a crucial transcription factor in both tubular epithelial cells and inflammatory cells, linking the coordinated inflammatory and cell death signaling pathways proposed in the concept of necroinflammation. It has been shown that NF- κ B activation in renal tubular epithelial cells aggravated tubular injury and exacerbated inflammation in a mouse model of kidney IRI [114]. It encouraged investigators to search for NF- κ B-based treatments of IRI.

The inhibition of multiple steps in the NF- κ B activity tested in animal experiments, mainly using gene therapy (small interfering RNA and oligodeoxynucleotides), resulted in preservation of kidney function after the induced ischemia [107, 110, 115]. It has been shown that proteasome inhibition using lactacystin ameliorated renal dysfunction in kidney IRI [116]. Also, the derivative of lactacystin PS519 ameliorated cerebral ischemia [117]. This effect is attributed to the inhibition of NF- κ B activation via decreased degradation of I κ B α , inhibitory protein of NF- κ B. Another approach would be the use of synthetic IKK inhibitors. Systemic inhibition of IKK2 using KINK-1 reduced BUN and serum creatinine, but “paradoxically” increased the percentage of infiltrating Th17 cells in mouse model of kidney IRI [93]. Therefore, it could be concluded that systemic IKK inhibition has more beneficial effects on

tubular epithelial cells than on infiltrating lymphocytes. Dual nature of systemic use of IKK2 inhibition has also been confirmed in experimental model of rapidly progressive glomerulonephritis [118]. Therapeutic IKK2 inhibition even produced proinflammatory effects, because suppressed Treg cells’ function prevailed over the inhibited DC maturation, arguing against using IKK2 inhibitors in glomerulonephritis and possibly other immune-mediated renal diseases [118].

6. Conclusion

All the presented data accentuate the influence of the innate immune response in pathogenesis of IRI, giving potential options in therapeutic approach. However, to our knowledge, all these approaches are still waiting to be translated into larger clinical trials investigating IRI.

There are several questions that should be answered, such as different roles of inflammatory cells depending on the phase of IRI and their participation in progression of AKI to CKD, or why studies in rodents targeting some inflammatory pathways have shown protection while clinical studies targeting the same pathways have failed. Also, the discovery of underlying mechanisms linking ischemic graft injury and acute rejection and how they could be modified with novel therapeutics would be of great clinical importance.

Conflicts of Interest

The authors declare that there is no conflict of interest regarding the publication of this article.

References

- [1] A. Kaddourah, R. K. Basu, S. M. Bagshaw, S. L. Goldstein SL, and AWARE Investigators, “Epidemiology of acute kidney injury in critically ill children and young adults,” *The New England Journal of Medicine*, vol. 376, no. 1, pp. 11–20, 2017.
- [2] G. M. Chertow, E. Burdick, M. Honour, J. V. Bonventre, and D. W. Bates, “Acute kidney injury, mortality, length of stay, and costs in hospitalized patients,” *Journal of the American Society of Nephrology*, vol. 16, no. 11, pp. 3365–3370, 2005.
- [3] D. P. Basile, “The endothelial cell in ischemic acute kidney injury: implications for acute and chronic function,” *Kidney International*, vol. 72, no. 2, pp. 151–156, 2007.

- [4] M. A. Venkatachalam, K. A. Griffin, R. Lan, H. Geng, P. Saikumar, and A. K. Bidani, "Acute kidney injury: a springboard for progression in chronic kidney disease," *American Journal of Physiology. Renal Physiology*, vol. 298, no. 5, pp. F1078–F1094, 2010.
- [5] N. Perico, D. Cattaneo, M. H. Sayegh, and G. Remuzzi, "Delayed graft function in kidney transplantation," *Lancet*, vol. 364, no. 9447, pp. 1814–1827, 2004.
- [6] P. Devarajan, "Update of mechanisms of ischemic acute kidney injury," *Journal of the American Society of Nephrology*, vol. 17, no. 6, pp. 1503–1520, 2006.
- [7] A. Kezic, I. Spasojevic, V. Lezaic, and M. Bajcetic, "Mitochondria-targeted antioxidants: future perspectives in kidney ischemia reperfusion injury," *Oxidative Medicine and Cellular Longevity*, vol. 2016, Article ID 2950503, p. 12, 2016.
- [8] M. Walker, J. L. York, S. Z. Imam, S. F. Ali, K. L. Muldrew, and P. R. Mayeux, "Oxidative stress and reactive nitrogen species generation during renal ischemia," *Toxicological Sciences*, vol. 63, no. 1, pp. 143–148, 2001.
- [9] A. Kezic, F. Thaiss, J. U. Becker, T. Y. Tsui, and M. Bajcetic, "Effects of everolimus on oxidative stress in kidney model of ischemia/reperfusion injury," *American Journal of Nephrology*, vol. 37, no. 4, pp. 291–301, 2013.
- [10] E. Noiri, T. Peresleni, F. Miller, and M. S. Goligorsky, "In vivo targeting of inducible NO synthase with oligodeoxynucleotides protects rat kidney against ischemia," *The Journal of Clinical Investigation*, vol. 97, no. 10, pp. 2377–2383, 1996.
- [11] P. K. Chatterjee, N. S. A. Patel, E. O. Kvale et al., "Inhibition of inducible nitric oxide synthase reduces renal ischemia/reperfusion injury," *Kidney International*, vol. 61, no. 3, pp. 862–871, 2002.
- [12] G. Y. Chen and G. Nuñez, "Sterile inflammation: sensing and reacting to damage," *Nature Reviews. Immunology*, vol. 10, no. 12, pp. 826–837, 2010.
- [13] J. V. Bonventre and A. Zuk, "Ischemic acute renal failure: an inflammatory disease?" *Kidney International*, vol. 66, no. 2, pp. 480–485, 2004.
- [14] K. J. Kelly, W. W. Jr Williams, R. B. Colvin et al., "Intercellular adhesion molecule-1-deficient mice are protected against ischemic renal injury," *The Journal of Clinical Investigation*, vol. 97, no. 4, pp. 1056–1063, 1997.
- [15] K. K. Donnahoo, X. Meng, A. Ayala, M. P. Cain, A. H. Harken, and D. R. Meldrum, "Early kidney TNF-alpha expression mediates neutrophil infiltration and injury after renal ischemia-reperfusion," *The American Journal of Physiology*, vol. 277, no. 3, Part 2, pp. R922–R929, 1999.
- [16] S. K. Jo, S. A. Sung, W. Y. Cho, and H. K. Kim, "Macrophages contribute to the initiation of ischaemic acute renal failure in rats," *Nephrology, Dialysis, Transplantation*, vol. 21, no. 5, pp. 1231–1239, 2006.
- [17] S. R. Satpute, J. M. Park, H. R. Jang et al., "The role for T cell repertoire/antigen-specific interactions in experimental kidney ischemia reperfusion injury," *Journal of Immunology*, vol. 183, no. 2, pp. 984–992, 2009.
- [18] J. V. Bonventre, "Dedifferentiation and proliferation of surviving epithelial cells in acute renal failure," *Journal of the American Society of Nephrology*, vol. 14, no. 1, pp. S55–S61, 2003.
- [19] M. A. Venkatachalam, J. M. Weinberg, W. Kriz, and A. K. Bidani, "Failed tubule recovery, AKI-CKD transition, and kidney disease progression," *Journal of the American Society of Nephrology*, vol. 26, no. 8, pp. 1765–1776, 2015.
- [20] T. A. Sutton, "Alteration of microvascular permeability in acute kidney injury," *Microvascular Research*, vol. 77, no. 1, pp. 4–7, 2009.
- [21] M. Takada, K. C. Nadeau, G. D. Shaw, K. A. Marquette, and N. L. Tilney, "The cytokine-adhesion molecule cascade in ischemia/reperfusion injury of the rat kidney. Inhibition by a soluble P-selectin ligand," *The Journal of Clinical Investigation*, vol. 99, no. 11, pp. 2682–2690, 1997.
- [22] K. Singbartl and K. Ley, "Protection from ischemia-reperfusion induced severe acute renal failure by blocking E-selectin," *Critical Care Medicine*, vol. 28, no. 7, pp. 2507–2514, 2000.
- [23] T. A. Sutton, C. J. Fisher, and B. A. Molitoris, "Microvascular endothelial injury and dysfunction during ischemic acute renal failure," *Kidney International*, vol. 62, no. 5, pp. 1539–1549, 2002.
- [24] U. Aksu, C. Demirci, and C. Ince, "The pathogenesis of acute kidney injury and the toxic triangle of oxygen, reactive oxygen species and nitric oxide," *Contributions to Nephrology*, vol. 174, pp. 119–128, 2011.
- [25] D. J. Oh, B. Dursun, Z. He et al., "Fractalkine receptor (CX3CR1) inhibition is protective against ischemic acute renal failure in mice," *American Journal of Physiology. Renal Physiology*, vol. 294, no. 1, pp. F264–F271, 2008.
- [26] A. A. Beg, "Endogenous ligands of Toll-like receptors: implications for regulating inflammatory and immune responses," *Trends in Immunology*, vol. 23, no. 11, pp. 509–512, 2002.
- [27] A. O. Aliprantis, R. B. Yang, D. S. Weiss, P. Godowski, and A. Zychlinsky, "The apoptotic signaling pathway activated by Toll-like receptor-2," *The EMBO Journal*, vol. 19, no. 13, pp. 3325–3336, 2000.
- [28] T. G. Wolfs, W. A. Buurman, A. van Schadewijk et al., "In vivo expression of Toll-like receptor 2 and 4 by renal epithelial cells: IFN-gamma and TNF-alpha mediated up-regulation during inflammation," *Journal of Immunology*, vol. 168, no. 3, pp. 1286–1293, 2002.
- [29] H. Wu, G. Chen, K. R. Wyburn et al., "TLR4 activation mediates kidney ischemia/reperfusion injury," *The Journal of Clinical Investigation*, vol. 117, no. 10, pp. 2847–2859, 2007.
- [30] B. S. Kim, S. W. Lim, C. Li et al., "Ischemia-reperfusion injury activates innate immunity in rat kidneys," *Transplantation*, vol. 79, no. 10, pp. 1370–1377, 2005.
- [31] J. C. Leemans, G. Stokman, N. Claessen et al., "Renal-associated TLR2 mediates ischemia/reperfusion injury in the kidney," *The Journal of Clinical Investigation*, vol. 115, no. 10, pp. 2894–2903, 2005.
- [32] L. M. Zhang, J. H. Liu, C. B. Xue et al., "Pharmacological inhibition of MyD88 homodimerization counteracts renal ischemia reperfusion-induced progressive renal injury in vivo and in vitro," *Scientific Reports*, vol. 6, p. 26954, 2016.
- [33] T. W. Rice, A. P. Wheeler, G. R. Bernard et al., "A randomized, double-blind, placebo-controlled trial of TAK-242 for the treatment of severe sepsis," *Critical Care Medicine*, vol. 38, no. 8, pp. 1685–1694, 2010.

- [34] J. M. Thurman, M. S. Lucia, D. Ljubanovic, and V. M. Holers, "Acute tubular necrosis is characterized by activation of the alternative pathway of complement," *Kidney International*, vol. 67, no. 2, pp. 524–530, 2005.
- [35] J. M. Thurman, D. Ljubanović, P. A. Royer et al., "Altered renal tubular expression of the complement inhibitor Crry permits complement activation after ischemia/reperfusion," *The Journal of Clinical Investigation*, vol. 116, no. 2, pp. 357–368, 2006.
- [36] J. M. Thurman, P. A. Royer, D. Ljubanovic et al., "Treatment with an inhibitory monoclonal antibody to mouse factor B protects mice from induction of apoptosis and renal ischemia/ reperfusion injury," *Journal of the American Society of Nephrology*, vol. 17, no. 3, pp. 707–715, 2006.
- [37] X. Zheng, X. Zhang, H. Sun et al., "Protection of renal ischemia injury using combination gene silencing of complement 3 and caspase 3 genes," *Transplantation*, vol. 82, no. 12, pp. 1781–1786, 2006.
- [38] A. S. Awad, M. Rouse, L. Huang et al., "Compartmentalization of neutrophils in the kidney and lung following acute ischemic kidney injury," *Kidney International*, vol. 75, no. 7, pp. 689–698, 2009.
- [39] K. J. Kelly, W. W. Jr Williams, R. B. Colvin, and J. V. Bonventre, "Antibody to intercellular adhesion molecule 1 protects the kidney against ischemic injury," *Proceedings of the National Academy of Sciences of the United States of America*, vol. 91, no. 2, pp. 812–816, 1994.
- [40] C. E. Haug, R. B. Colvin, F. L. Delmonico et al., "A phase I trial of immunosuppression with anti-ICAM-1 (CD54) mAb in renal allograft recipients," *Transplantation*, vol. 55, no. 4, pp. 766–772, 1993.
- [41] K. Salmela, L. Wrämner, H. Ekberg et al., "A randomized multicenter trial of the anti-ICAM-1 monoclonal antibody (enlimomab) for the prevention of acute rejection and delayed onset of graft function in cadaveric renal transplantation: a report of the European Anti-ICAM-1 Renal Transplant Study Group," *Transplantation*, vol. 67, no. 5, pp. 729–736, 1999.
- [42] L. Li, L. Huang, S. S. Sung et al., "The chemokine receptors CCR2 and CX3CR1 mediate monocyte/macrophage trafficking in kidney ischemia-reperfusion injury," *Kidney International*, vol. 74, no. 12, pp. 1526–1537, 2008.
- [43] K. Furuichi, J. L. Gao, R. Horuk, T. Wada, S. Kaneko, and P. M. Murphy, "Chemokine receptor CCR1 regulates inflammatory cell infiltration after renal ischemia-reperfusion injury," *Journal of Immunology*, vol. 181, no. 12, pp. 8670–8676, 2008.
- [44] K. Furuichi, T. Wada, Y. Iwata et al., "CCR2 signaling contributes to ischemia-reperfusion injury in kidney," *Journal of the American Society of Nephrology*, vol. 14, no. 10, pp. 2503–2515, 2003.
- [45] V. Y. Melnikov, T. Eceder, G. Fantuzzi et al., "Impaired IL-18 processing protects caspase-1-deficient mice from ischemic acute renal failure," *The Journal of Clinical Investigation*, vol. 107, no. 9, pp. 1145–1152, 2001.
- [46] A. Bajwa, G. R. Kinsey, and M. D. Okusa, "Immune mechanisms and novel pharmacological therapies of acute kidney injury," *Current Drug Targets*, vol. 10, no. 12, pp. 1196–1204, 2009.
- [47] X. Dong, S. Swaminathan, L. A. Bachman, A. J. Croatt, K. A. Nath, and M. D. Griffin, "Resident dendritic cells are the predominant TNF-secreting cell in early renal ischemia-reperfusion injury," *Kidney International*, vol. 71, no. 7, pp. 619–628, 2007.
- [48] L. Li and M. D. Okusa, "Macrophages, dendritic cells and kidney ischemia-reperfusion injury," *Seminars in Nephrology*, vol. 30, no. 3, pp. 268–277, 2010.
- [49] L. Li, L. Huang, S. S. Sung et al., "NKT cell activation mediates neutrophil IFN-gamma production and renal ischemia-reperfusion injury," *Journal of Immunology*, vol. 178, no. 9, pp. 5899–5911, 2007.
- [50] T. J. Soos, T. N. Sims, L. Barisoni et al., "CX3CR1+ interstitial dendritic cells form a contiguous network throughout the entire kidney," *Kidney International*, vol. 70, no. 3, pp. 591–596, 2006.
- [51] J. G. Penfield, Y. Wang, S. Li et al., "Transplant surgery injury recruits recipient MHC class II-positive leukocytes into the kidney," *Kidney International*, vol. 56, no. 5, pp. 1759–1769, 1999.
- [52] A. Loverre, C. Capobianco, G. Stallone et al., "Ischemia-reperfusion injury-induced abnormal dendritic cell traffic in the transplanted kidney with delayed graft function," *Kidney International*, vol. 72, no. 8, pp. 994–1003, 2007.
- [53] C. Auffray, D. Fogg, M. Garfa et al., "Monitoring of blood vessels and tissues by a population of monocytes with patrolling behavior," *Science*, vol. 317, no. 5838, pp. 666–670, 2007.
- [54] F. Geissmann, S. Jung, and D. R. Littman, "Blood monocytes consist of two principal subsets with distinct migratory properties," *Immunity*, vol. 19, no. 1, pp. 71–82, 2003.
- [55] M. Mohamadzadeh, F. Berard, G. Essert et al., "Interleukin 15 skews monocyte differentiation into dendritic cells with features of Langerhans cells," *The Journal of Experimental Medicine*, vol. 194, no. 7, pp. 1013–1020, 2001.
- [56] P. Chomarat, C. Dantin, L. Bennett, J. Banchereau, and A. K. Palucka, "TNF skews monocyte differentiation from macrophages to dendritic cells," *Journal of Immunology*, vol. 171, no. 5, pp. 2262–2269, 2003.
- [57] P. Chomarat, J. Banchereau, J. Davoust, and A. K. Palucka, "IL-6 switches the differentiation of monocytes from dendritic cells to macrophages," *Nature Immunology*, vol. 1, no. 6, pp. 510–514, 2000.
- [58] Y. Delneste, P. Charbonnier, N. Herbault et al., "Interferon-gamma switches monocyte differentiation from dendritic cells to macrophages," *Blood*, vol. 101, no. 1, pp. 143–150, 2003.
- [59] S. D. Ricardo, H. v. Goor, and A. A. Eddy, "Macrophage diversity in renal injury and repair," *The Journal of Clinical Investigation*, vol. 118, no. 11, pp. 3522–3530, 2008.
- [60] P. J. Murray, J. E. Allen, S. K. Biswas et al., "Macrophage activation and polarization: nomenclature and experimental guidelines," *Immunity*, vol. 41, no. 2, pp. 339–340, 2014.
- [61] S. Lee, S. Huen, H. Nishio et al., "Distinct macrophage phenotypes contribute to kidney injury and repair," *Journal of the American Society of Nephrology*, vol. 22, no. 2, pp. 317–326, 2011.
- [62] Y. Wang, Y. P. Wang, G. Zheng et al., "Ex vivo programmed macrophages ameliorate experimental chronic inflammatory renal disease," *Kidney International*, vol. 72, no. 3, pp. 290–299, 2007.
- [63] S. S. Gordon, "Alternative activation of macrophages," *Nature Reviews. Immunology*, vol. 3, no. 1, pp. 23–35, 2003.

- [64] S. S. Bohlson, S. D. O'Conner, H. J. Hulsebus, M. M. Ho, and D. A. Fraser, "Complement, C1q, and C1q-related molecules regulate macrophage polarization," *Frontiers in Immunology*, vol. 5, p. 402, 2014.
- [65] D. A. Ferenbach, T. A. Sheldrake, K. Dhaliwal et al., "Macrophage/monocyte depletion by clodronate, but not diphtheria toxin, improves renal ischemia/reperfusion injury in mice," *Kidney International*, vol. 82, no. 8, pp. 928–933, 2012.
- [66] Y. J. Day, L. Huang, H. Ye, J. Linden, and M. D. Okusa, "Renal ischemia-reperfusion injury and adenosine 2A receptor-mediated tissue protection: role of macrophages," *American Journal of Physiology. Renal Physiology*, vol. 288, no. 4, pp. F722–F731, 2005.
- [67] L. Li, L. Huang, H. Ye et al., "Dendritic cells tolerized with adenosine A2AR agonist attenuate acute kidney injury," *The Journal of Clinical Investigation*, vol. 122, no. 11, pp. 3931–3942, 2012.
- [68] A. Ohta and M. Sitkovsky, "Role of G-protein-coupled adenosine receptors in downregulation of inflammation and protection from tissue damage," *Nature*, vol. 414, no. 6866, pp. 916–920, 2001.
- [69] M. Sitkovsky, D. Lukashev, S. Apasov et al., "Physiological control of immune response and inflammatory tissue damage by hypoxia-inducible factors and adenosine A2A receptors," *Annual Review of Immunology*, vol. 22, pp. 657–682, 2004.
- [70] S. Morello, K. Ito, S. Yamamura et al., "IL-1 beta and TNF-alpha regulation of the adenosine receptor (A2A) expression: differential requirement for NF-kappa B binding to the proximal promoter," *Journal of Immunology*, vol. 177, no. 10, pp. 7173–7183, 2006.
- [71] D. Lukashev, A. Ohta, S. Apasov, J. F. Chen, and M. Sitkovsky, "Cutting edge: physiologic attenuation of pro-inflammatory transcription by the Gs protein-coupled A2A adenosine receptor in vivo," *Journal of Immunology*, vol. 173, no. 1, pp. 21–24, 2004.
- [72] Y. J. Day, L. Huang, M. J. McDuffie et al., "Renal protection from ischemia mediated by A2A adenosine receptors on bone marrow-derived cells," *The Journal of Clinical Investigation*, vol. 112, no. 6, pp. 883–891, 2003.
- [73] Y. J. Day, M. A. Marshall, L. Huang, M. J. McDuffie, M. D. Okusa, and J. Linden, "Protection from ischemic liver injury by activation of A2A adenosine receptors during reperfusion: inhibition of chemokine induction," *The American Journal of Physiology*, vol. 286, no. 2, pp. G285–G293, 2004.
- [74] Y. J. Day, L. Huang, H. Ye, L. Li, J. Linden, and M. D. Okusa, "Renal ischemia-reperfusion injury and adenosine 2A receptor-mediated tissue protection: the role of CD4+ T cells and IFN-gamma," *Journal of Immunology*, vol. 176, no. 5, pp. 3108–3114, 2006.
- [75] S. K. Jo, A. Bajwa, A. S. Awad, K. R. Lynch, and M. D. Okusa, "Sphingosine-1-phosphate receptors: biology and therapeutic potential in kidney disease," *Kidney International*, vol. 73, no. 11, pp. 1220–1230, 2008.
- [76] Y. Maeda, H. Matsuyuki, K. Shimano, H. Kataoka, K. Sugahara, and K. Chiba, "Migration of CD4 T cells and dendritic cells toward sphingosine 1-phosphate (S1P) is mediated by different receptor subtypes: S1P regulates the functions of murine mature dendritic cells via S1P receptor type 3," *Journal of Immunology*, vol. 178, no. 6, pp. 3437–3446, 2007.
- [77] N. Czeloth, G. Bernhardt, F. Hofmann, H. Genth, and R. Förster, "Sphingosine-1-phosphate mediates migration of mature dendritic cells," *Journal of Immunology*, vol. 175, no. 5, pp. 2960–2967, 2005.
- [78] A. Bajwa, L. Huang, H. Ye et al., "Dendritic cell sphingosine 1-phosphate receptor-3 regulates Th1-Th2 polarity in kidney ischemia-reperfusion injury," *Journal of Immunology*, vol. 189, no. 5, pp. 2584–2596, 2012.
- [79] M. Rescigno, M. Martino, C. L. Sutherland, M. R. Gold, and P. Ricciardi-Castagnoli, "Dendritic cell survival and maturation are regulated by different signaling pathways," *The Journal of Experimental Medicine*, vol. 188, no. 11, pp. 2175–2180, 1998.
- [80] Q. Li and I. M. Verma, "NF-kB regulation in the immune system," *Nature Reviews. Immunology*, vol. 2, no. 10, pp. 725–734, 2002.
- [81] D. I. Godfrey, H. R. MacDonal, M. Kronenberg, M. J. Smyth, and L. V. Kaer, "NKT cells: what's in a name?" *Nature Reviews. Immunology*, vol. 4, no. 3, pp. 231–237, 2004.
- [82] S. A. Porcelli and R. L. Modlin, "The CD1 system: antigen-presenting molecules for T cell recognition of lipids and glycolipids," *Annual Review of Immunology*, vol. 17, pp. 297–329, 1999.
- [83] A. Bendelac, P. B. Savage, and L. Teyton, "The biology of NKT cells," *Annual Review of Immunology*, vol. 25, pp. 297–336, 2007.
- [84] M. Kronenberg and Y. Kinjo, "Infection, autoimmunity, and glycolipids: T cells detect microbes through self-recognition," *Immunity*, vol. 22, no. 6, pp. 657–659, 2005.
- [85] M. J. Burne, F. Daniels, A. El Ghandour et al., "Identification of the CD4(+) T cell as a major pathogenic factor in ischemic acute renal failure," *The Journal of Clinical Investigation*, vol. 108, no. 9, pp. 1283–1290, 2001.
- [86] M. J. Burne-Taney, N. Yokota-Ikeda, and H. Rabb, "Effects of combined T and B-cell deficiency on murine ischemia reperfusion injury," *American Journal of Transplantation*, vol. 5, no. 6, pp. 1186–1193, 2005.
- [87] Z. X. Zhang, S. Wang, X. Huang et al., "NK cells induce apoptosis in tubular epithelial cells and contribute to renal ischemia-reperfusion injury," *Journal of Immunology*, vol. 181, no. 11, pp. 7489–7498, 2008.
- [88] D. K. Ysebaert, K. E. De Greef, A. De Beuf et al., "T cells as mediators in renal ischemia/reperfusion injury," *Kidney International*, vol. 66, no. 2, pp. 491–496, 2004.
- [89] K. E. De Greef, D. K. Ysebaert, S. Dauwe et al., "Anti-B7-1 blocks mononuclear cell adherence in vasa recta after ischemia," *Kidney International*, vol. 60, no. 4, pp. 1415–1427, 2001.
- [90] D. B. Ascon, S. Lopez-Briones, M. Liu et al., "Phenotypic and functional characterization of kidney-infiltrating lymphocytes in renal ischemia reperfusion injury," *Journal of Immunology*, vol. 177, no. 5, pp. 3380–3387, 2006.
- [91] G. J. Ko, D. Linfert, H. R. Jang et al., "Transcriptional analysis of infiltrating T cells in kidney ischemia-reperfusion injury reveals a pathophysiological role for CCR5," *American Journal of Physiology. Renal Physiology*, vol. 302, no. 6, pp. F762–F773, 2012.
- [92] P. Fiorina, M. J. Ansari, M. Jurewicz et al., "Role of CXC chemokine receptor 3 pathway in renal ischemic injury," *Journal of the American Society of Nephrology*, vol. 17, no. 3, pp. 716–723, 2006.
- [93] L. Guo, H. H. Lee, M. L. Noriega, H. J. Paust, G. Zahner, and F. Thaiss, "Lymphocyte-specific deletion of IKK2 or NEMO

- mediates an increase in intrarenal Th17 cells and accelerates renal damage in an ischemia-reperfusion injury mouse model," *American Journal of Physiology. Renal Physiology*, vol. 311, no. 5, pp. F1005–F1014, 2016.
- [94] C. N. Patil, K. Wallace, B. D. LaMarca et al., "Low-dose testosterone protects against renal ischemia-reperfusion injury by increasing renal IL-10-to-TNF- α ratio and attenuating T-cell infiltration," *American Journal of Physiology. Renal Physiology*, vol. 311, no. 2, pp. F395–F403, 2016.
- [95] S. L. Gafen, R. Jain, A. V. Garg, and D. J. Cua, "The IL-23-IL-17 immune axis: from mechanisms to therapeutic testing," *Nature Reviews. Immunology*, vol. 14, no. 9, pp. 585–600, 2014.
- [96] Q. Ruan, V. Kameswaran, Y. Zhang et al., "The Th17 immune response is controlled by the Rel-ROR γ -ROR γ T transcriptional axis," *The Journal of Experimental Medicine*, vol. 208, no. 11, pp. 2321–2333, 2011.
- [97] C. H. Fong, M. Bebień, A. Didierlaurent et al., "An anti-inflammatory role for IKK β through the inhibition of "classical" macrophage activation," *The Journal of Experimental Medicine*, vol. 205, no. 6, pp. 1269–1276, 2008.
- [98] A. K. Mankan, O. Canli, S. Schwitalla et al., "TNF- α -dependent loss of IKK β -deficient myeloid progenitors triggers a cytokine loop culminating in granulocytosis," *Proceedings of the National Academy of Sciences of the United States of America*, vol. 108, no. 16, pp. 6567–6572, 2011.
- [99] V. P. Marques, G. M. Gonçalves, C. Q. Feitoza et al., "Influence of TH1/TH2 switched immune response on renal ischemia-reperfusion injury," *Nephron. Experimental Nephrology*, vol. 104, no. 1, pp. 48–56, 2006.
- [100] E. Gückel, S. Frey, M. M. Zaiss, G. Schett, S. Ghosh, and R. E. Voll, "Cell-intrinsic NF- κ B activation is critical for the development of natural regulatory T cells in mice," *PLoS One*, vol. 6, no. 5, article e20003, 2011.
- [101] R. M. Monteiro, N. O. Camara, M. M. Rodrigues et al., "A role for regulatory T cells in renal acute kidney injury," *Transplant Immunology*, vol. 21, no. 1, pp. 50–55, 2009.
- [102] M. T. Gandolfo, H. R. Jang, S. M. Bagnasco et al., "Foxp3+ regulatory T cells participate in repair of ischemic acute kidney injury," *Kidney International*, vol. 76, no. 7, pp. 717–729, 2009.
- [103] L. W. Lai, K. C. Yong, and Y. H. Lien, "Pharmacologic recruitment of regulatory T cells as a therapy for ischemic acute kidney injury," *Kidney International*, vol. 81, no. 10, pp. 983–992, 2012.
- [104] S. N. Nadig, J. Wieckiewicz, D. C. Wu et al., "In vivo prevention of transplant arteriosclerosis by *ex vivo*-expanded human regulatory T cells," *Nature Medicine*, vol. 16, no. 7, pp. 809–813, 2010.
- [105] R. Tao, E. F. de Zoeten, E. Ozkaynak et al., "Deacetylase inhibition promotes the generation and function of regulatory T cells," *Nature Medicine*, vol. 13, no. 11, pp. 1299–1307, 2007.
- [106] A. Ohta, R. Kini, A. Ohta, M. Subramanian, M. Madasu, and M. Sitkovsky, "The development and immunosuppressive functions of CD4(+) CD25(+) FoxP3(+) regulatory T cells are under influence of the adenosine-A2A adenosine receptor pathway," *Frontiers in Immunology*, vol. 3, p. 190, 2012.
- [107] T. C. Nichols, "NF- κ B and reperfusion injury," *Drug News & Perspectives*, vol. 17, no. 2, pp. 99–104, 2004.
- [108] C. C. Cao, X. Q. Ding, Z. L. Ou et al., "In vivo transfection of NF- κ B decoy oligodeoxynucleotides attenuate renal ischemia/reperfusion injury in rats," *Kidney International*, vol. 65, no. 3, pp. 834–845, 2004.
- [109] A. Kezic, J. U. Becker, and F. Thaiss F, "The effect of mTOR-inhibition on NF- κ B activity in kidney ischemia-reperfusion injury in mice," *Transplantation Proceedings*, vol. 45, no. 5, pp. 1708–1714, 2013.
- [110] X. Wan, L. Fan, B. Hu et al., "Small interfering RNA targeting IKK β prevents renal ischemia-reperfusion injury in rats," *American Journal of Physiology. Renal Physiology*, vol. 300, no. 4, pp. F857–F863, 2011.
- [111] F. L. Sung, T. Y. Zhu, K. K. Au-Yeung, Y. L. Siow, and K. O, "Enhanced MCP-1 expression during ischemia/reperfusion injury is mediated by oxidative stress and NF- κ B," *Kidney International*, vol. 62, no. 4, pp. 1160–1170, 2002.
- [112] M. A. Daemen, B. de Vries, and W. A. Buurman, "Apoptosis and inflammation in renal reperfusion injury," *Transplantation*, vol. 73, no. 11, pp. 1693–1700, 2002.
- [113] C. A. Latanich and L. H. Toledo-Pereyra, "Searching for NF- κ B-based treatments of ischemia reperfusion injury," *Journal of Investigative Surgery*, vol. 22, no. 4, pp. 301–315, 2009.
- [114] L. Markó, E. Vigolo, C. Hinze et al., "Tubular epithelial NF- κ B activity regulates ischemic AKI," *Journal of the American Society of Nephrology*, vol. 27, no. 9, pp. 2658–2669, 2016.
- [115] X. Wan, J. Yang, L. Xing et al., "Inhibition of I κ B Kinase β attenuates hypoxia-induced inflammatory mediators in rat renal tubular cells," *Transplantation Proceedings*, vol. 43, no. 5, pp. 1503–1510, 2011.
- [116] M. Itoh, M. Takaoka, A. Shibata, M. Ohkita, and Y. Matsumura, "Preventive effect of lactacystin, a selective proteasome inhibitor, on ischemic acute renal failure in rats," *The Journal of Pharmacology and Experimental Therapeutics*, vol. 298, no. 2, pp. 501–507, 2001.
- [117] J. B. Phillips, A. J. Williams, J. Adams, P. J. Elliott, and F. C. Tortella, "Proteasome inhibitor PS519 reduces infarction and attenuates leukocyte infiltration in a rat model of focal cerebral ischemia," *Stroke*, vol. 31, no. 7, pp. 1686–1693, 2000.
- [118] J. Gotot, E. Piotrowski, M. S. Otte et al., "Inhibitor of NF κ B kinase subunit 2 blockade hinders the initiation but aggravates the progression of crescentic GN," *Journal of the American Society of Nephrology*, vol. 27, no. 7, pp. 1917–1924, 2016.