

'*Khelaifiella massiliensis*', '*Niameybacter massiliensis*', '*Brachybacterium massiliense*', '*Enterobacter timonensis*', '*Massilibacillus massiliensis*', new bacterial species and genera isolated from the gut microbiota of healthy infants

M. Tidjani Alou¹, F. Cadoret¹, S. Brah², A. Diallo³, C. Sokhna³, V. Mehrej¹, J.-C. Lagier¹, P.-E. Fournier¹ and D. Raoult^{1,3,4}

1) Aix-Marseille Université, URMITE, UM63, CNRS7278, IRD198, Inserm 1095, Institut Hospitalo-Universitaire Méditerranée-Infection, Marseille, France, 2) Hôpital National de Niamey, Niamey, Niger, 3) Unité de Recherche sur les Maladies Infectieuses et Tropicales Emergentes IRD 198, CNRS 7278, Campus Commun UCAD-IRD of Hann, Dakar, Senegal and 4) Special Infectious Agents Unit, King Fahd Medical Research Centre, King Abdulaziz University, Jeddah, Saudi Arabia

Abstract

The main characteristics of '*Khelaifiella massiliensis*' strain MtI3^T (= CSUR P1935, = DSM100591), '*Niameybacter massiliensis*' strain MtI4^T (= CSUR P1909, = DSM100592), '*Brachybacterium massiliense*' strain MT5^T (= CSUR P2240, = DSM101766), '*Enterobacter timonensis*' strain mt20^T (= CSUR P2201, = DSM 101775) and '*Massilibacillus massiliensis*' strain Marseille-P2411^T (= CSUR P2411, = DSM102838), new species isolated from the gut of healthy African infants, are presented.

© 2017 Published by Elsevier Ltd on behalf of European Society of Clinical Microbiology and Infectious Diseases.

Keywords: Culturomics, gut microbiota, new species, taxono-genomic

Original Submission: 17 January 2017; **Accepted:** 27 February 2017

Article published online: 29 March 2017

Corresponding author: D. Raoult, Aix-Marseille Université, URMITE, UM63, CNRS7278, IRD198, Inserm 1095, Institut Hospitalo-Universitaire Méditerranée-Infection 19-21 Boulevard Jean Moulin, 13385, Marseille cedex 05, France.

E-mail: didier.raoult@gmail.com

Extensive knowledge of the gut microbiota composition has become essential for the understanding of many aspects of health and disease. For that purpose, stool samples were collected from a 7-month-old healthy girl with a weight-for-height z-score of 0.15 from Niger and a 38-month-old healthy girl with a weight-for-height z-score of -0.12 from Senegal. The diversity of these samples was explored using the culturomics concept [1,2]. Oral consent for this study was obtained from the children's parents and the study received authorization from the local ethics committee of the Institut Federatif de Recherche IFR48 under number 09-022. As part of

this study, strains MtI3^T and MtI4^T were isolated in the sample from Niger whereas strains mt20^T, MT5^T and Marseille-P2411^T were isolated in the sample from Senegal.

Growth conditions and strains phenotypic characteristics

Strain MtI3^T was first isolated after a 3-day pre-incubation in an anaerobic blood culture bottle supplemented with sheep blood and seeding on 5% sheep-blood-enriched Columbia agar (bio-Mérieux, Marcy l'Etoile, France) at 37°C in an anaerobic atmosphere. Large greyish and irregular colonies were obtained with a mean diameter of 8 mm. Cells were Gram-stain-positive bacilli with a mean diameter of 0.67 µm and a mean length of 2.99 µm. Catalase and oxidase activities were absent.

Strain MtI4^T was first isolated after a 7-day pre-incubation in an anaerobic blood culture bottle supplemented with rumen and sheep blood and seeding on 5% sheep-blood-enriched Columbia agar at 37°C in an anaerobic

atmosphere. Small white colonies were obtained with a mean diameter of 3 mm. These colonies were formed with Gram-stain-positive bacilli with a mean diameter of 0.61 μm and a mean length of 4.47 μm .

Strain MT5^T and strain mt20^T were first isolated after a 24-h and 3-day aerobic pre-incubation, respectively, in a liquid medium containing 37 g of Difco Marine Broth (Becton Dickinson, Le Pont de Claix, France) per litre of sterile water at 37°C and on 5% sheep-blood-enriched Columbia agar in aerobic conditions. Strain mt20^T formed large brown colonies with a mean diameter of 8 mm. Cells were Gram-stain-negative bacilli with a mean diameter of 0.8 μm and a mean length of 1.3 μm . Strain mt20^T exhibited oxidase and catalase activities. As for strain

mt21^T, it formed white full, circular colonies with a mean diameter of 3 mm, which were formed with Gram-stain-positive cocci. Cells had a mean diameter of 0.57 μm and exhibited catalase activity and no oxidase activity.

After a 7-day pre-incubation in an anaerobic blood culture bottle supplemented with sheep blood and rumen and seeding on 5% sheep-blood-enriched Columbia agar in an anaerobic atmosphere, strain Marseille-P2411^T was isolated. Small translucent colonies with a white centre measuring a mean diameter of 2 mm were obtained. These Gram-stain-positive bacilli had a mean diameter of 0.6 μm and a mean length of 3.65 μm . Catalase and oxidase activities were not exhibited by strain Marseille-P2411^T.

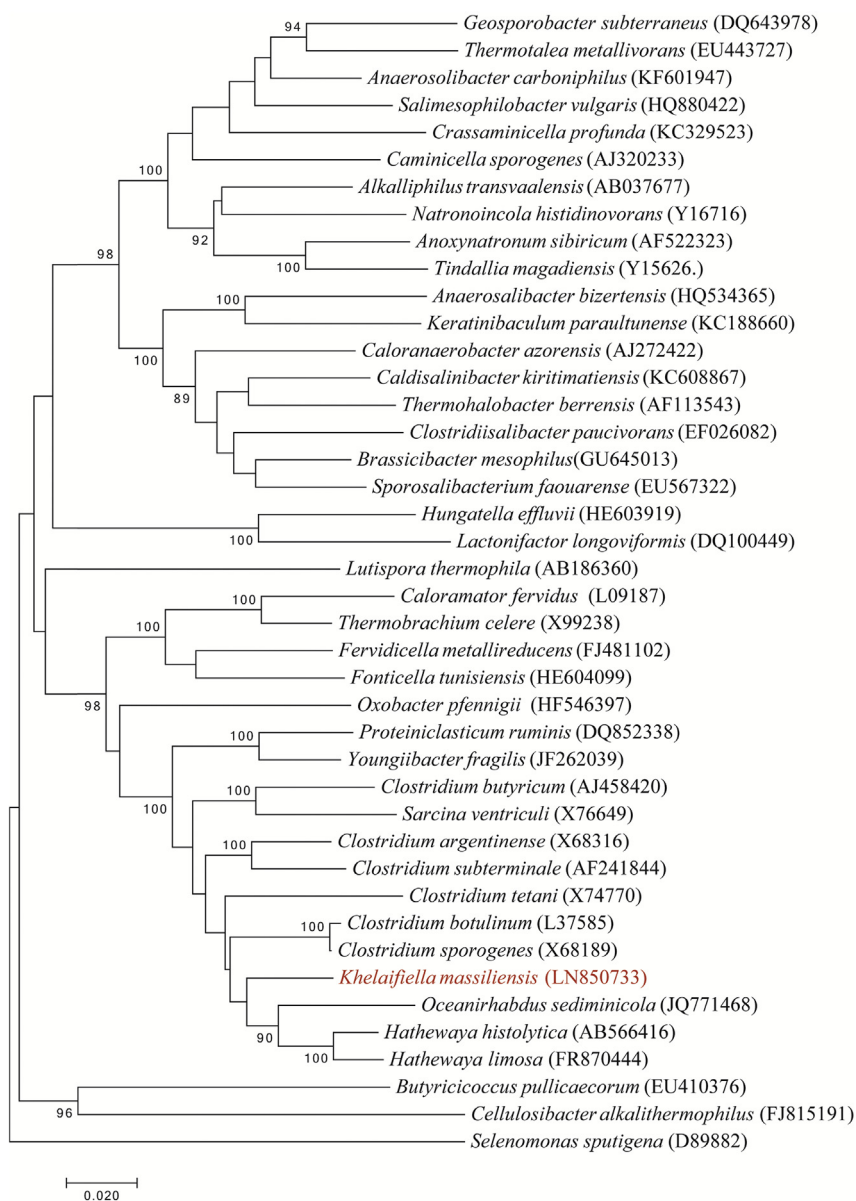


FIG 1. Phylogenetic tree showing position of 'Khelaifiella massiliensis' strain Mt13^T relative to other phylogenetically close species with validly published name. Sequences were aligned using CLUSTALW, and phylogenetic inferences were obtained using a maximum likelihood method within MEGA software [12]. Numbers at nodes are percentages of bootstrap values obtained by repeating the analysis 500 times to generate a majority consensus tree. *Selenomonas sputigena* was used as outgroup. Scale bar indicates 2% nucleotide sequence divergence.

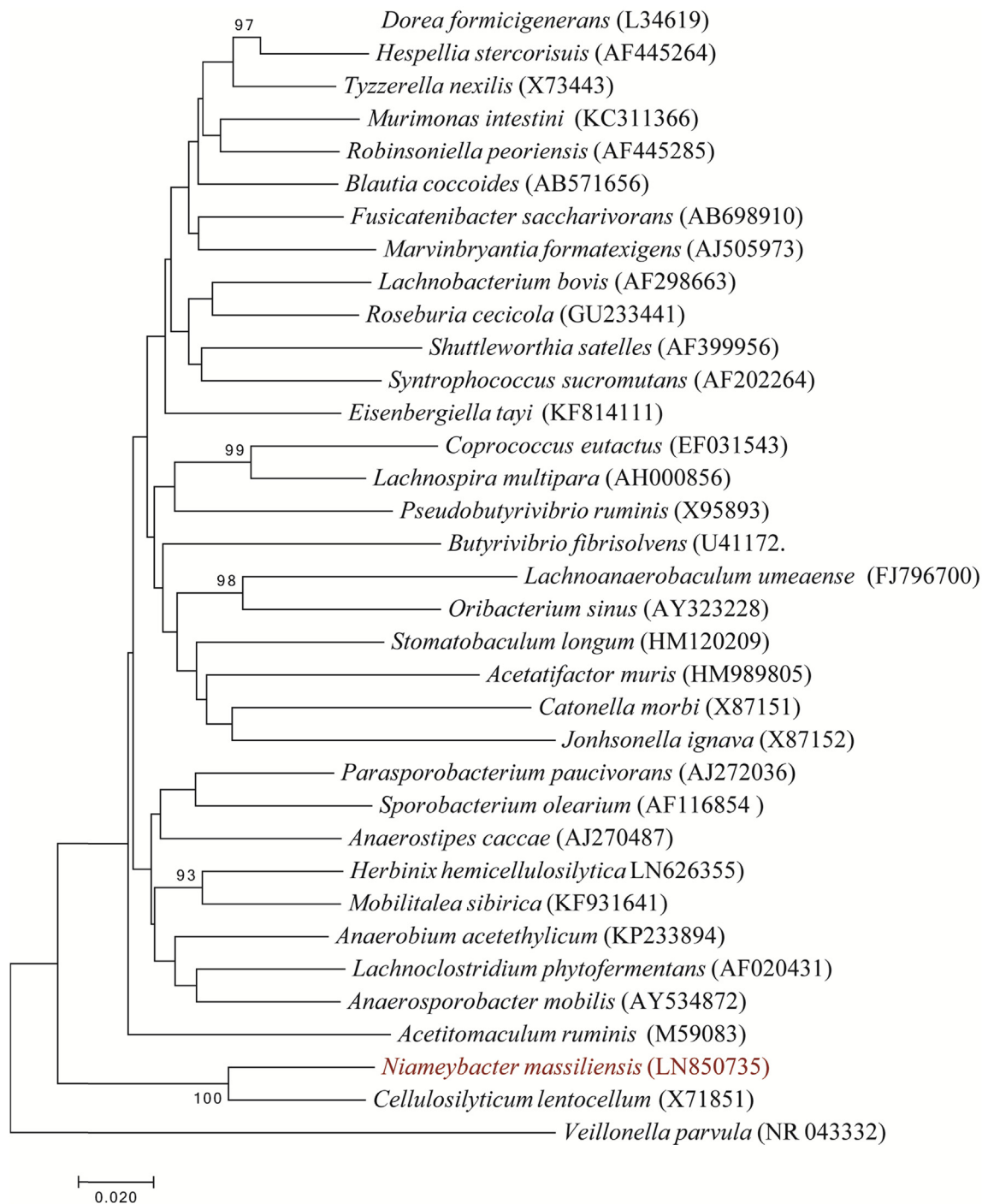


FIG 2. Phylogenetic tree showing position of ‘*Niameybacter massiliensis*’ strain Mtl4^T relative to other phylogenetically close species with validly published name. Sequences were aligned using CLUSTALW, and phylogenetic inferences were obtained using a maximum likelihood method within MEGA software [12]. Numbers at nodes are percentages of bootstrap values obtained by repeating the analysis 500 times to generate a majority consensus tree. *Veillonella parvula* was used as outgroup. Scale bar indicates 2% nucleotide sequence divergence.

Strain identification

After a failed identification of all five strains using matrix-assisted laser desorption/ionization time-of-flight mass spectrometry (MALDI-TOF MS) on a Microflex spectrometer (Bruker Daltonics, Bremen, Germany) [3,4], the 16S rRNA gene was sequenced using fD1 and rP2 primers [5] as well as the *rpoB* gene for strain mt20^T [6]. Kim *et al.* suggested a 98.65% and a 95% similarity level threshold to define a new species and a new genus, respectively, without performing DNA–DNA hybridization [7] using the 16S rRNA gene while a 97.7% threshold was set for identification using the *rpoB* gene [6].

The 16S rRNA gene of strain Mt13^T (Accession number LN850733) showed a 94.23% similarity level with *Hathewayia histolytica* strain ATCC 19401^T (Accession number AB566416) [8]. This classifies strain Mt13^T as a putative new genus within the family *Clostridiaceae* (Fig. 1), for which we suggest the name *Khelaifiella* (Khe.lai.fi.el'la N.L. fem. n. composed of *Khelaifia*, in honour of the microbiologist Saber Khelaifia, and *bacterium*, meaning rod) with the type species being '*Khelaifiella massiliensis*' (mas.si.li.en'sis; L. fem. adj. *massiliensis* for Massilia, the Roman name of Marseille, where strain Mt13^T was first

isolated). Strain Mt13^T is the type strain of the species '*Khelaifiella massiliensis*'.

The 16S rRNA gene sequences of strain Mt14^T (Accession number LN850735) revealed a 92.18% similarity level with *Cellulosilyticum lentocellum* strain RHM5^T (Accession number X71851) [9], confirming strain Mt14^T as a new genus within the family *Lachnospiraceae* (Fig. 2). The name *Niameybacter* (Nia-mey.bac'ter for Niamey, the capital of Niger where the stool sample was collected and *bacter* for bacterium) is proposed for this new genus as well the type species '*Niameybacter massiliensis*' (mas.si.li.en'sis; L. masc. adj. *massiliensis* for Massilia, the Roman name of Marseille, where strain Mt14^T was first isolated). Strain Mt14^T is the type strain of the species '*Niameybacter massiliensis*'.

The 16S rRNA sequence of strain MT5^T (Accession number LN906631) presented a 98.18% similarity level with *Brachybacterium saurashtrense* strain JG 06^T (Accession number EU937750) [10]. Strain MT5^T was therefore classified as a new species within the genus *Brachybacterium* (Fig. 3) for which we suggest the name '*Brachybacterium massiliense*' (mas.si.li.en'se; L. masc. neut. adj. *massiliense* for Massilia, the Roman name of Marseille, where strain MT5^T was first isolated). Strain MT5^T is the type strain of the species '*Brachybacterium massiliense*'.

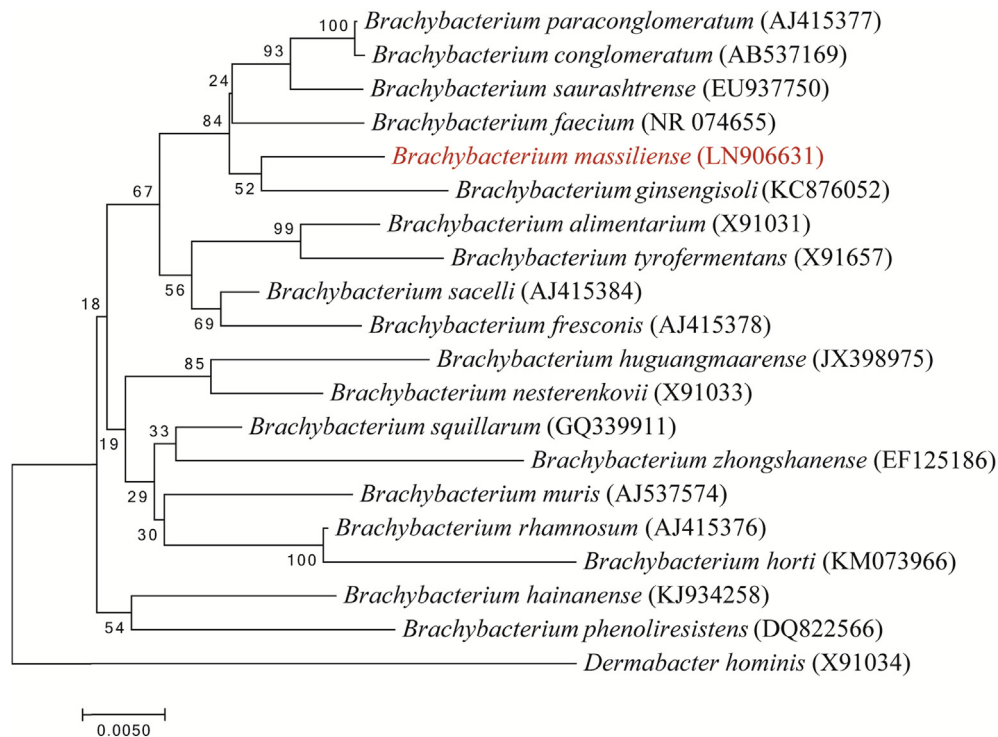


FIG 3. Phylogenetic tree showing position of '*Brachybacterium massiliense*' strain MT5^T relative to other phylogenetically close species with validly published name. Sequences were aligned using CLUSTALW, and phylogenetic inferences were obtained using a maximum likelihood method within MEGA software [12]. Numbers at nodes are percentages of bootstrap values obtained by repeating the analysis 500 times to generate a majority consensus tree. *Dermabacter hominis* was used as outgroup. Scale bar indicates 0.5% nucleotide sequence divergence.

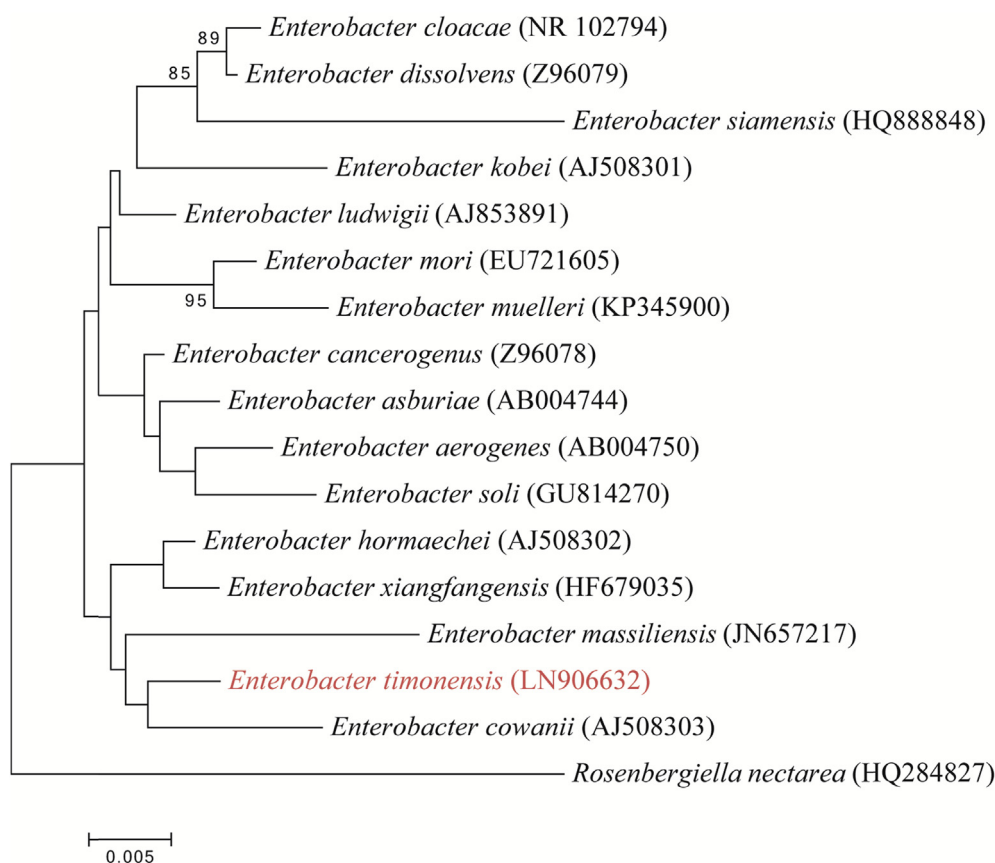


FIG 4. Phylogenetic tree showing position of ‘*Enterobacter timonensis*’ strain mt20^T relative to other phylogenetically close species with validly published names. Sequences were aligned using CLUSTALW, and phylogenetic inferences were obtained using a maximum likelihood method within MEGA software [12]. Numbers at nodes are percentages of bootstrap values obtained by repeating the analysis 500 times to generate a majority consensus tree. *Rosenbergiella nectarea* was used as the outgroup. Scale bar indicates 0.5% nucleotide sequence divergence.

The 16S rRNA gene sequence of strain mt20^T (accession number LN906632) showed a 98.4% similarity level with *Enterobacter cloacae* strain ATCC 13047^T (Accession number NR_102794) [7,8] so classifying strain mt20^T as a new species within the genus *Enterobacter* (Fig. 4). The *rpoB* gene sequence (Accession number LN906633) showed a 95.12% similarity level with the *rpoB* gene of *Enterobacter cloacae* strain ATCC 13047^T (Accession number AJ543726), confirming the status of strain mt20^T as a putative new species [6]. Strain mt20^T is the type strain of ‘*Enterobacter timonensis*’ sp. nov. (ti.mo.nen’sis. L. gen. masc. timonensis, of Timone, the name of the hospital where strain mt20^T was first isolated).

The 16S rRNA gene sequence of strain Marseille-P2411 (accession number LT161896) presented a similarity level of 94.2% with *Anaerobaculum glycerini* strain DSM 5192 (GenBank Accession number NR_025297) [11], which is the phylogenetically closest species with a validly published name (Fig. 5). A

new genus was created within the family *Veillonellaceae* named ‘*Massilibacillus*’ (mas.si’li, L., masc. adj., massili for Massilia, the old Roman name for Marseille where the genus was first isolated; bacillus as a reference to the rod shape of the cell). Strain Marseille-P2411^T is the type species of ‘*Massilibacillus massiliensis*’ (mas.si.li.en’sis, L., masc. adj., massiliensis for Massilia, the old Roman name for Marseille where strain Marseille-P2411^T was first isolated).

MALDI-TOF MS spectra

The MALDI-TOF MS spectra of ‘*Khelaifiella massiliensis*’, ‘*Niameybacter massiliensis*’, ‘*Enterobacter massiliensis*’, ‘*Brachybacterium massiliense*’ and ‘*Massilibacillus massiliensis*’ are available at <http://www.mediterraneeinfection.com/article.php?laref=256&titre=urms-database>.

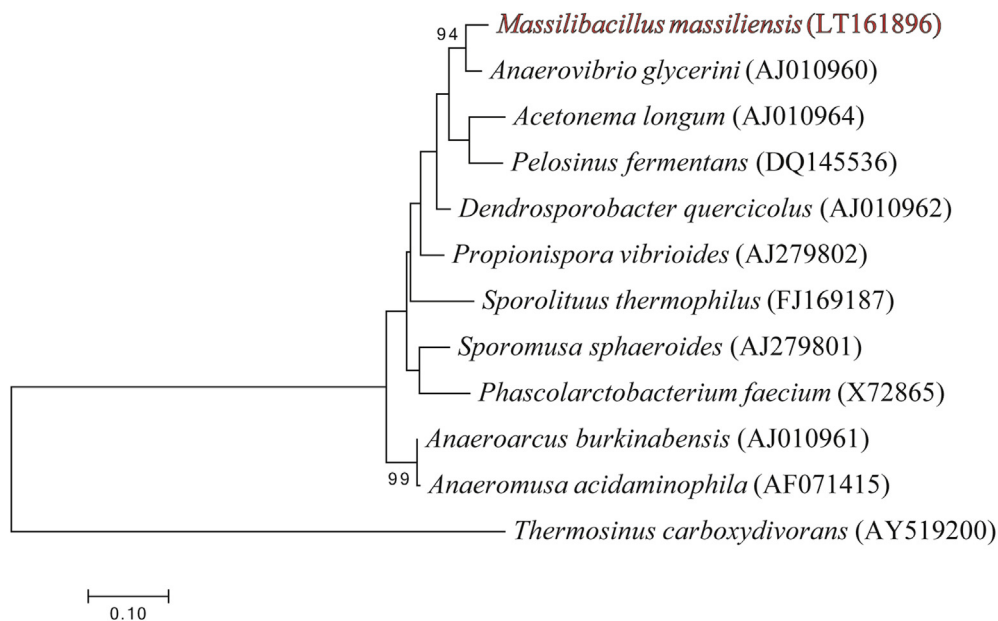


FIG 5. Phylogenetic tree showing position of '*Massilibacillus massiliensis*' strain Marseille-P2411^T relative to other phylogenetically close species with validly published name. Sequences were aligned using CLUSTALW, and phylogenetic inferences were obtained using the maximum likelihood method within MEGA software [12]. Numbers at nodes are percentages of bootstrap values obtained by repeating the analysis 500 times to generate a majority consensus tree. *Thermosinus carboxydivorans* was used as outgroup. Scale bar indicates 1% nucleotide sequence divergence.

Nucleotide sequence accession number

The 16S rRNA sequences of strains Mt13^T, Mt14^T, MT5^T and Marseille-P2411^T are deposited in the GenBank database under accession numbers LN850733, LN850735, LN906631 and LT161896, respectively.

The 16S rRNA and *rpoB* gene sequences for strain mt20^T are also deposited in the GenBank database under accession numbers LN906632 and LN906633, respectively.

Deposit in a culture collection

Strains Mt13^T, Mt14^T, MT5^T, mt20^T and Marseille-P2411^T were deposited in the Collection de Souches de l'Unité des Rickettsies (CSUR, WDCM 875) under numbers P1935, P1909, P2240, P2201 and P2411, respectively. Strains Mt14^T, MT5^T, mt20^T and Marseille-P2411^T were also deposited in the Deutsche Sammlung von Mikroorganismen und Zellkulturen GmbH (DSMZ) under numbers DSM100592, DSM101766, DSM101775 and DSM102838, respectively.

Transparency declaration

None to declare.

Acknowledgement

This study was funded by the Fondation Méditerranée Infection.

References

- [1] Lagier J-C, Armougom F, Million M, Hugon P, Pagnier I, Robert C, et al. Microbial culturomics: paradigm shift in the human gut microbiome study. *Clin Microbiol Infect* 2012;18:1185–93.
- [2] Lagier J-C, Hugon P, Khelaïfia S, Fournier P-E, La Scola B, Raoult D. The rebirth of culture in microbiology through the example of culturomics to study human gut microbiota. *Clin Microbiol Rev* 2015;28:237–64.
- [3] Seng P, Abat C, Rolain JM, Colson P, Lagier J-C, Gouriet F, et al. Identification of rare pathogenic bacteria in a clinical microbiology laboratory: impact of matrix-assisted laser desorption ionization-time of flight mass spectrometry. *J Clin Microbiol* 2013;51:2182–94.
- [4] Seng P, Drancourt M, Gouriet F, La Scola B, Fournier P-E, Rolain JM, et al. Ongoing revolution in bacteriology: routine identification of bacteria by matrix-assisted laser desorption ionization time-of-flight mass spectrometry. *Clin Infect Dis* 2009;49:543–51.
- [5] Drancourt M, Bollet C, Carlioz A, Martelin R, Gayral JP, Raoult D. 16S ribosomal DNA sequence analysis of a large collection of environmental and clinical unidentifiable bacterial isolates. *J Clin Microbiol* 2000;38:3623–30.
- [6] Adékambi T, Drancourt M, Raoult D. The *rpoB* gene as a tool for clinical microbiologists. *Trends Microbiol* 2009;17:37–45. <http://dx.doi.org/10.1016/j.tim.2008.09.008>.
- [7] Kim M, Oh H-S, Park S-C, Chun J. Towards a taxonomic coherence between average nucleotide identity and 16S rRNA gene sequence

- similarity for species demarcation of prokaryotes. *Int J Syst Evol Microbiol* 2014;64:346–51.
- [8] Lawson PA, Rainey FA. Proposal to restrict the genus *Clostridium* (Prazmowski) to *Clostridium butyricum* and related species. *ResearchGate* 2015;35. <http://dx.doi.org/10.1099/ijsem.0.000824>.
- [9] Cai S, Dong X. *Cellulosilyticum ruminicola* gen. nov., sp. nov., isolated from the rumen of yak, and reclassification of *Clostridium lentocellum* as *Cellulosilyticum lentocellum* comb. nov. *Int J Syst Evol Microbiol* 2010;60: 845–9.
- [10] Gontia I, Kavita K, Schmid M, Hartmann A, Jha B. *Brachybacterium saurashtrense* sp. nov., a halotolerant root-associated bacterium with plant growth-promoting potential. *Int J Syst Evol Microbiol* 2011;61: 2799–804.
- [11] Strömpl C, Tindall BJ, Jarvis GN, Lünsdorf H, Moore ERB, Hippe H. A re-evaluation of the taxonomy of the genus *Anaerovibrio*, with the reclassification of *Anaerovibrio glycerini* as *Anaerosinus glycerini* gen. nov., comb. nov., and *Anaerovibrio burkinabensis* as *Anaeroarcus burkinensis* [corrig.] gen. nov., comb. nov. *Int J Syst Evol Microbiol* 1999;49: 1861–72.
- [12] Kumar S, Stecher G, Tamura K. MEGA7: Molecular Evolutionary Genetics Analysis Version 7.0 for Bigger Datasets. *Mol Biol Evol* 2016;33:1870–4.