

## Original Article



## OPEN ACCESS

**Received:** Dec 6, 2016

**Revised:** May 16, 2017

**Accepted:** May 17, 2017

### Correspondence to

#### Charles S. Fuchs

Yale Cancer Center, Yale School of Medicine,  
333 Cedar Street, WWW205, New Haven, CT  
06510, USA.

Tel: +1-203-785-7870

Fax: +1-203-785-4116

E-mail: charles.fuchs@yale.edu

Copyright © 2017. Korean Gastric Cancer  
Association

This is an Open Access article distributed  
under the terms of the Creative Commons  
Attribution Non-Commercial License ([https://  
creativecommons.org/licenses/by-nc/4.0](https://creativecommons.org/licenses/by-nc/4.0))  
which permits unrestricted noncommercial  
use, distribution, and reproduction in any  
medium, provided the original work is properly  
cited.

### Funding

This research was supported by Eli Lilly and  
Company, Indianapolis, IN, USA.

### Conflict of Interest

Drs. Emig, Ferry, Chandrawansa, Hsu,  
Sashegyi, and Liepa are full-time employees  
and stockholders of Eli Lilly and Company.  
Dr. Ferry additionally received honoraria from  
Eli Lilly and Company, Sanofi, and Roche;  
he also held an advisory role for Eli Lilly and  
Company, Sanofi, and Roche; he received  
research funding from Eli Lilly and Company  
and Sanofi; he gave expert testimony for Eli  
Lilly and Company; he received travel support  
from Sanofi and Roche. Dr. Fuchs served as  
a consultant for Eli Lilly and Company, Pfizer,  
Etrinsic Health, Genentech, Merck, Gilead

# Prognostic Factor Analysis of Overall Survival in Gastric Cancer from Two Phase III Studies of Second-line Ramucirumab (REGARD and RAINBOW) Using Pooled Patient Data

Charles S. Fuchs<sup>1</sup>, Kei Muro<sup>2</sup>, Jiri Tomasek<sup>3</sup>, Eric Van Cutsem<sup>4</sup>, Jae Yong Cho<sup>5</sup>, Sang-Cheul Oh<sup>6</sup>, Howard Safran<sup>7</sup>, György Bodoky<sup>8</sup>, Ian Chau<sup>9</sup>, Yasuhiro Shimada<sup>10</sup>, Salah-Eddin Al-Batran<sup>11</sup>, Rodolfo Passalacqua<sup>12</sup>, Atsushi Ohtsu<sup>13</sup>, Michael Emig<sup>14</sup>, David Ferry<sup>15</sup>, Kumari Chandrawansa<sup>15</sup>, Yanzhi Hsu<sup>15</sup>, Andreas Sashegyi<sup>16</sup>, Astra M. Liepa<sup>16</sup>, Hansjochen Wilke<sup>17</sup>

<sup>1</sup>Dana-Farber Cancer Institute, Boston, MA, USA

<sup>2</sup>Department of Clinical Oncology, Aichi Cancer Center Hospital, Nagoya, Japan

<sup>3</sup>Masaryk Memorial Cancer Institute, Faculty of Medicine, Masaryk University, Brno, Czech Republic

<sup>4</sup>University Hospital Gasthuisberg Leuven and KU Leuven, Leuven, Belgium

<sup>5</sup>Gangnam Severance Hospital, Seoul, Korea

<sup>6</sup>Korea University Guro Hospital, Seoul, Korea

<sup>7</sup>Oncology Research Group, Brown University, Providence, RI, USA

<sup>8</sup>Szent László Hospital, Budapest, Hungary

<sup>9</sup>Royal Marsden Hospital, London and Surrey, United Kingdom

<sup>10</sup>Gastrointestinal Medical Oncology Division, National Cancer Center Hospital, Tokyo, Japan

<sup>11</sup>Institute of Clinical Research, Universitäre Zentrum für Tumorerkrankungen-University Cancer Center, Frankfurt, Germany

<sup>12</sup>Istituto Ospitalieri di Cremona, Cremona, Italy

<sup>13</sup>Exploratory Oncology Research and Clinical Trial Center, National Cancer Center, Kashiwa, Japan

<sup>14</sup>Lilly Deutschland GmbH, Bad Homburg, Germany

<sup>15</sup>Eli Lilly and Company, Bridgewater, NJ, USA

<sup>16</sup>Eli Lilly and Company, Indianapolis, IN, USA

<sup>17</sup>Departments of Oncology and Hematology with Integrated Palliative Care, Kliniken Essen-Mitte, Essen, Germany

## ABSTRACT

**Purpose:** To identify baseline prognostic factors for survival in patients with disease progression, during or after chemotherapy for the treatment of advanced gastric or gastroesophageal junction (GEJ) cancer.

**Materials and Methods:** We pooled data from patients randomized between 2009 and 2012 in 2 phase III, global double-blind studies of ramucirumab for the treatment of advanced gastric or GEJ adenocarcinoma following disease progression on first-line platinum- and/or fluoropyrimidine-containing therapy (REGARD and RAINBOW). Forty-one key baseline clinical and laboratory factors common in both studies were examined. Model building started with covariate screening using univariate Cox models (significance level=0.05). A stepwise multivariable Cox model identified the final prognostic factors (entry+exit significance level=0.01). Cox models were stratified by treatment and geographic region. The process was repeated to identify baseline prognostic quality of life (QoL) parameters.

Sciences, Macrogenics, Sanofi, Dicerna, Frive Prime Therapeutics, Bristol Myers Squibb, Bayer, Merrimack, and Celgene. Dr. Muro received honoraria from Takeda, Chugai Pharma, Yakult Honsha, Merck Serono, and Taiho Pharmaceutical. Dr. Tomasek received honoraria from Roche, Bayer, Merck, Amgen, and Eli Lilly and Company; he served in an advisory role for Ipsen, Amgen, and Roche; he received research funding from Amgen, Novartis, and Eli Lilly and Company; and he received travel support from Pfizer, Eli Lilly and Company, Novartis, and Roche. Dr. Van Cutsem received research support from Amgen, Bayer, Boehringer Ingelheim, Eli Lilly and Company, Merck Serono, Novartis, Roche, Sanofi, Celgene, and Ipsen. Dr. Chau would like to acknowledge United Kingdom National Health Service funding to the National Institute for Health Research Biomedical Research Centre at the Royal Marsden NHS Foundation Trust and The Institute of Cancer Research. Dr. Shimada received research funding from Eli Lilly and Company, Taiho Pharmaceutical, and Chugai Pharma. Dr. Al-Batran received honoraria and served as an advisor for Eli Lilly and Company. Dr. Passalacqua received honoraria from Eli Lilly and Company, Roche, and Novartis; he served as an advisor for Eli Lilly and Company; he is on the Speakers' bureau for Astellas Pharma; and he receives research funding from Amgen. Dr. Ohtsu is related to an employee of Celgene and he receives research funding from Bristol-Myers Squibb. Dr. Wilke received honoraria from Eli Lilly and Company and served as an advisor for Eli Lilly and Company.

This abstract has been presented in part at the 51st Annual Meeting of American Society of Clinical Oncology (Chicago, IL; May 29–June 2, 2015) and at the European Cancer Congress 2015 (Vienna, Austria; September 25–29, 2015).

**Results:** Of 1,020 randomized patients, 953 (93%) patients without any missing covariates were included in the analysis. We identified 12 independent prognostic factors of poor survival: 1) peritoneal metastases; 2) Eastern Cooperative Oncology Group (ECOG) performance score 1; 3) the presence of a primary tumor; 4) time to progression since prior therapy <6 months; 5) poor/unknown tumor differentiation; abnormally low blood levels of 6) albumin, 7) sodium, and/or 8) lymphocytes; and abnormally high blood levels of 9) neutrophils, 10) aspartate aminotransferase (AST), 11) alkaline phosphatase (ALP), and/or 12) lactate dehydrogenase (LDH). Factors were used to devise a 4-tier prognostic index (median overall survival [OS] by risk [months]: high=3.4, moderate=6.4, medium=9.9, and low=14.5; Harrell's C-index=0.66; 95% confidence interval [CI], 0.64–0.68). Addition of QoL to the model identified patient-reported appetite loss as an independent prognostic factor.

**Conclusions:** The identified prognostic factors and the reported prognostic index may help clinical decision-making, patient stratification, and planning of future clinical studies.

**Keywords:** Prognosis; Stomach neoplasms; Gastroesophageal junction; Survival

## INTRODUCTION

Gastric cancer is the fifth most common malignancy worldwide, representing 6.8% of all new cancers [1-3], and the third leading cause, accounting for 8.8%, of all cancer-related deaths. The 5-year survival rate declines rapidly with the extent of the cancer, from 65.4% for patients with localized lesions to 29.9% for those with regional metastases, decreasing further to 4.5% for those with distant metastases [3]. Owing to the generally asymptomatic nature in the early stages of gastric cancer, up to two-thirds of patients present with regional or distal metastatic disease [4-6].

Surgical resection is the primary treatment for non-metastatic gastric cancer, and several studies have suggested prognostic indices for these patients. However, patients with metastatic disease are treated with systemic chemotherapy, with few studies aimed at determining prognostic indices for these populations. The Royal Marsden Hospital [7,8] proposed a prognostic index from 4 factors associated with poor prognosis in first-line therapy: performance status (PS)  $\geq 2$ , liver metastasis, peritoneal metastasis, and elevated alkaline phosphatase (ALP). This analysis was performed using data exclusively from Western centers, although the index was validated in 2 independent datasets in Korea [9] and Japan [10]. Takahari and colleagues [10], noting that there are “substantial differences” in the prognosis of Asian and Western patients with advanced gastric cancer, proposed a prognostic index for first-line chemotherapy based on 4 similar risk factors: PS  $\geq 1$ , number of metastatic sites  $\geq 2$ , no prior gastrectomy, and elevated ALP [10]. However, this secondary analysis was performed exclusively with an Asian population [10]. There is a paucity of prognostic data after first-line chemotherapy in gastric cancer patients. Catalano and colleagues [11], and more recently, Kanagavel and colleagues [12], proposed prognostic indices to identify low-, intermediate-, and high-risk groups of patients with metastatic gastric cancer receiving second-line chemotherapy. However, both studies were limited by small sample sizes (n=175 and n=126, respectively) and a retrospective, non-randomized study design.

In contrast to other cancer types, such as non-Hodgkin lymphoma, multiple myeloma, and cancers of the breast, kidney, prostate, or colon, no common prognostic index exists for advanced gastric cancer, in part due to the limited numbers of studies performed, low

patient numbers, or limited geographic reach. Development of a generally applicable prognostic index for advanced gastric cancer would be valuable for assessing survival prognosis of individual patients, aiding in stratification for new randomized clinical trials (RCTs), and guiding decisions for optimal treatment strategies [7,8,10,12-14].

Improvement in quality of life (QoL), even in the absence of prolonged survival time, is an important outcome that should be considered when recommending second-line therapy [13]. Evaluation of QoL includes physical, psychological, and social dimensions, and best reflects how patients perceive their own state of health [7,15]. Chau and colleagues [7] found that a higher baseline QoL was associated with improved survival with first-line chemotherapy, indicating that QoL reflects a patient's overall well-being and has prognostic value.

The present analysis was undertaken using 2 large RCTs with Western and Asian populations to devise a prognostic index for survival in patients with previously treated advanced gastric/gastroesophageal junction (GEJ) cancer. A secondary analysis that considered baseline QoL was also performed.

## MATERIALS AND METHODS

Patient data were obtained from 2 large global RCTs of second-line therapy for advanced gastric/GEJ cancer that included patients from Asia, Europe, North and South America, Australia, and Africa. For the REGARD study (NCT00917384), 355 patients were randomized between October 2009 and January 2012 in 29 countries to receive either ramucirumab (Cyramza<sup>®</sup>; Eli Lilly and Company, Indianapolis, IN, USA) (8 mg/kg; n=238) or placebo (n=117), intravenously once every 2 weeks plus best supportive care [16]. The RAINBOW study (NCT01170663) was conducted with 665 patients who were randomized between December 2010 and September 2012 [17] to receive either ramucirumab (8 mg/kg, n=330) or placebo (n=335), intravenously on days 1 and 15, plus paclitaxel (Taxol<sup>®</sup>; Bristol-Myers Squibb Company, Princeton, NJ, USA) (80 mg/m<sup>2</sup>) intravenously on days 1, 8, and 15 of a 28-day cycle. The study designs and consolidated standards of reporting trials diagrams have been previously published [16,17].

### Patient selection

Both studies had similar eligibility criteria. Patients had advanced gastric/GEJ adenocarcinoma and disease progression within 4 months of first-line chemotherapy (platinum and/or fluoropyrimidine with or without an anthracycline). Patients had an Eastern Cooperative Oncology Group (ECOG) PS of 0 or 1, and measurable or non-measurable evaluable disease [16,17] as defined by response evaluation criteria in solid tumors (RECIST) version 1.1 (RAINBOW) or version 1.0 (REGARD) [18]. Both studies assessed QoL using the European Organization for Research and Treatment of Cancer (EORTC) 30-item Quality of Life Core Questionnaire (QLQ-C30) version 3.0 [19]. The individual data from the REGARD and RAINBOW studies were pooled (1,020 patients, 794 deaths), providing the largest to date second-line gastric cancer population to be analyzed for prognostic factors.

Both studies were conducted in accordance with the ethical principles originating in the Declaration of Helsinki, good clinical practices, and all applicable laws and regulations. The Institutional Review Board at each site approved the study, and all subjects provided written informed consent before undergoing any study procedure.

### Statistical analysis

The endpoint for the present analysis was overall survival (OS), defined as the time from randomization to time of death from any cause, with patients censored at the last-known-alive date if they were not known to have died at the time of the data cut-off.

Given the large sample size of the pooled studies (1,020 patients, 794 events), the model can accommodate a large number of covariates. A covariate pool was generated from all 41 baseline factors common in both studies (18 clinical characteristics, 22 laboratory parameters, and geographic region). The clinical characteristics included: age, race, ethnicity, sex, weight loss, ECOG PS, body weight, disease progression during first-line therapy or within 4 months, time since diagnosis, histologic subtype, presence of liver metastases, disease measurability, number of metastatic sites, primary tumor location, presence of primary tumor, time to progression since prior therapy, tumor differentiation, and presence of peritoneal metastasis. The laboratory parameters included: levels of alanine aminotransferase (ALT), ALP, aspartate aminotransferase (AST), lactate dehydrogenase (LDH), albumin, bilirubin, creatinine, erythrocytes, hematocrit, hemoglobin, leucocytes, lymphocytes, neutrophils, platelets, phosphate, potassium, magnesium, sodium, and calcium; prothrombin international normalized ratio (INR); prothrombin time (PT); and activated partial thromboplastin time (PTT).

Continuous variables for clinical characteristics were dichotomized using thresholds specified in the study protocols (age, weight loss, time to progression since prior therapy, and number of metastatic sites) or using the median (body weight and time since diagnosis) (Table 1). Laboratory parameters were analyzed based on local laboratory assessments with 3 categories (abnormally high, normal, and abnormally low). The categorized laboratory

**Table 1.** Clinical factors: baseline summary and univariate analysis

Clinical factors	Patient characteristics		Univariate Cox model	
	No. of patients	Poor prognostic group, No. of patients in each group (%)	HR	P-value
<b>Peritoneal metastases (yes vs. no)</b>	<b>1,020</b>	<b>424 (41.6)</b>	<b>1.617</b>	<b>&lt;0.0001</b>
<b>ECOG PS (1 vs. 0)</b>	<b>1,020</b>	<b>661 (64.8)</b>	<b>1.611</b>	<b>&lt;0.0001</b>
No. of metastatic sites (≥3 vs. 0 to 2)	1,020	345 (33.8)	1.445	<0.0001
Weight loss within 3 mo (≥10% vs. <10%)	1,018	154 (15.1)	1.544	<0.0001
Time since diagnosis (<9 mo vs. ≥9 mo)	1,020	524 (51.4)	1.353	<0.0001
<b>Presence of a primary tumor (yes vs. no)</b>	<b>1,020</b>	<b>678 (66.5)</b>	<b>1.360</b>	<b>&lt;0.0001</b>
<b>Time to progression since prior therapy (&lt;6 mo vs. ≥6 mo)</b>	<b>1,016</b>	<b>645 (63.5)</b>	<b>1.346</b>	<b>&lt;0.0001</b>
<b>Tumor differentiation (poor/unknown vs. well/moderate)</b>	<b>1,020</b>	<b>643 (63.0)</b>	<b>1.344</b>	<b>&lt;0.0001</b>
Body weight (<60 kg vs. ≥60 kg)	1,019	433 (42.5)	1.284	0.0014
Histologic subtype (diffuse vs. intestinal)	1,020	388 (38.0)	1.239	0.0119
Histologic subtype (other* vs. intestinal)	1,020	265 (26.0)	1.160	0.1181
Age group (<65 yr vs. ≥65 yr)	1,020	643 (63.0)	1.151	0.0613
Liver metastases (yes vs. no)	1,020	448 (43.9)	1.139	0.0727
Disease progression (during first-line therapy vs. within 4 mo after the last dose of first-line therapy)	979	475 (48.5)	1.176	0.0746
Sex (female vs. male)	1,020	300 (29.4)	1.142	0.0936
Ethnicity (Hispanic or Latino vs. not Hispanic or Latino)	1,020	117 (11.5)	1.251	0.1755
Race (other† vs. Caucasian)	1,020	54 (5.3)	1.140	0.4453
Race (Asian vs. Caucasian)	1,020	287 (28.1)	1.174	0.4493
Measureable disease (no vs. yes)	1,019	174 (17.1)	1.042	0.6756
Primary tumor location (GEJ vs. gastric junction)	1,020	228 (22.4)	1.023	0.7977

The factors that were included in the final model are shown in bold text. For each factor, the poor prognostic group is shown first for each group pair within parentheses. HR = hazard ratio; ECOG = Eastern Cooperative Oncology Group; PS = performance status; GEJ = gastroesophageal junction.

\*Histologic subtype (other) means mixed and unknown/missing; †Race (other) includes African-American, American Indian, or Alaska Native, multiple race, and others.

values were used in the analysis to account for measurement variability across local laboratories.

Two factors needed special handling: treatment and geographic region. Treatment has substantial impact on OS, as significant treatment benefits were demonstrated in both studies. As discussed in the introduction, geographic region is a well-known prognostic factor in gastric cancer, which is also confirmed in this pooled data. As these 2 factors are not individual patient characteristics, they were adjusted in Cox models as stratification factors instead of covariates. Effects of selected covariates were very similar if these 2 factors were controlled as covariates (small change in hazard ratio [HR] estimates: maximum=-0.09, average=-0.02).

Prognostic factors were identified using Cox models in 2 steps. First, univariate Cox models (including each individual factor as the sole covariate) screened the covariates (significance level=0.05). Then, the final prognostic factors were identified based on a multivariable Cox model that was built using stepwise selection of covariates (entry and exit significance level=0.01). This stringent significance level (0.01) was used to reduce the impact of multiplicity due to the large number of covariates, which decreases the chance of identifying false positive factors as prognostic. Once the factors were identified, HRs with 99% confidence limits were estimated for each prognostic factor based on the final Cox model with only the selected factors as covariates (to reduce the number of patients who may have been excluded due to missing values of unselected factors). Based on the relative magnitude of each factor's effect on OS (i.e., HR), a prognostic index was devised and grouped into 4 levels: low, medium, moderate, and high risk.

The discriminatory performance of the prognostic index was calculated using Harrell's C-index [20] and assessed visually using Kaplan-Meier plots. The internal validation was assessed via bootstrapping to estimate over-fitting optimism from model building.

To identify any additional independent prognostic factors from the QoL data, we repeated the above analyses with the 15 scales from the QLQ-C30. Following the EORTC scoring guidelines [21], each scale is reported as 0 to 100, with higher scores on the global health status and functioning scales, and lower scores on the symptom scales representing better QoL. For this analysis, these scores were dichotomized by median value (or 0 vs. >0 if median=0, or 100 vs. <100 if median=100). Once the univariate Cox models identified the significant QoL parameters (significance level=0.05), these parameters were included in the multivariable stepwise Cox regression, while the previously selected clinical and laboratory factors were forcibly included in the model (to identify additional prognostic value from QoL data). Once the QoL factors were selected, final estimates of coefficients were based on the model with only the selected clinical, laboratory, and QoL factors, to maximize the number of patients included in the analysis.

## RESULTS

Of the 1,020 total patients included in the RAINBOW and REGARD studies, 953 (93%) were included in the final multivariable Cox regression analysis for this study, after excluding patients with missing covariate values. A significant number of this population included patients with peritoneal metastasis (41.6%), ECOG PS 1 (64.8%), time to progression since prior therapy <6 months (63.5%), metastatic sites  $\geq 3$  (33.8%), poorly differentiated

**Table 2.** Laboratory parameters: baseline summary and univariate analysis

Laboratory parameters	No. of patients included in the analysis	Low vs. normal or high			High vs. normal or low		
		Low, No. of patients in each group (%)	HR	P-value	High, No. of patients in each group (%)	HR	P-value
<b>Albumin</b>	997	<b>324 (32.5)</b>	<b>1.811</b>	<b>&lt;0.0001</b>	8 (0.8)	0.485	0.1083
<b>Sodium</b>	1,008	<b>149 (14.8)</b>	<b>2.645</b>	<b>&lt;0.0001</b>	14 (1.4)	0.614	0.1786
Hematocrit	1,010	760 (75.3)	1.487	<0.0001	2 (0.2)	5.563	0.0172
Hemoglobin	1,010	781 (77.3)	1.376	0.0003	2 (0.2)	5.563	0.0172
Erythrocytes	1,007	754 (74.9)	1.365	0.0004	8 (0.8)	1.422	0.4353
<b>Lymphocytes</b>	1,007	<b>262 (26.0)</b>	<b>1.263</b>	<b>0.0004</b>	9 (0.9)	0.574	0.2183
<b>Neutrophils</b>	1,010	42 (4.2)	0.573	0.0056	<b>166 (16.4)</b>	<b>2.121</b>	<b>&lt;0.0001</b>
Potassium	1,007	46 (4.6)	1.567	0.0072	32 (3.2)	1.287	0.2322
Creatinine	1,008	132 (13.1)	1.211	0.0733	103 (10.2)	1.146	0.2445
<b>AST</b>	1,009	15 (1.5)	0.541	0.0897	<b>205 (20.3)</b>	<b>1.583</b>	<b>&lt;0.0001</b>
Calcium	986	137 (13.9)	1.192	0.1036	32 (3.3)	1.076	0.7376
Phosphate	964	53 (5.5)	0.776	0.1280	62 (6.4)	0.936	0.6803
<b>ALP</b>	994	6 (0.6)	0.410	0.1290	<b>392 (39.4)</b>	<b>1.506</b>	<b>&lt;0.0001</b>
Activated PPT	970	91 (9.4)	1.208	0.1330	63 (6.5)	1.125	0.4445
Magnesium	979	125 (12.8)	1.110	0.3429	26 (2.7)	1.000	1.0000
<b>LDH</b>	982	44 (4.5)	0.853	0.3766	<b>317 (32.3)</b>	<b>1.455</b>	<b>&lt;0.0001</b>
PT	749	42 (5.6)	0.868	0.4617	147 (19.6)	0.925	0.4883
Prothrombin INR	995	63 (6.3)	0.900	0.4856	93 (9.4)	1.432	0.0045
Leukocytes	1,010	72 (7.1)	0.907	0.4949	141 (14.0)	1.983	<0.0001
Platelets	1,010	124 (12.3)	1.074	0.5142	98 (9.7)	1.279	0.0445
Bilirubin	1,009	14 (1.4)	0.882	0.6961	47 (4.7)	1.183	0.3378
ALT	1,009	36 (3.6)	1.071	0.7174	95 (9.4)	1.266	0.0452

The factors that were included in the final model are shown in bold text.

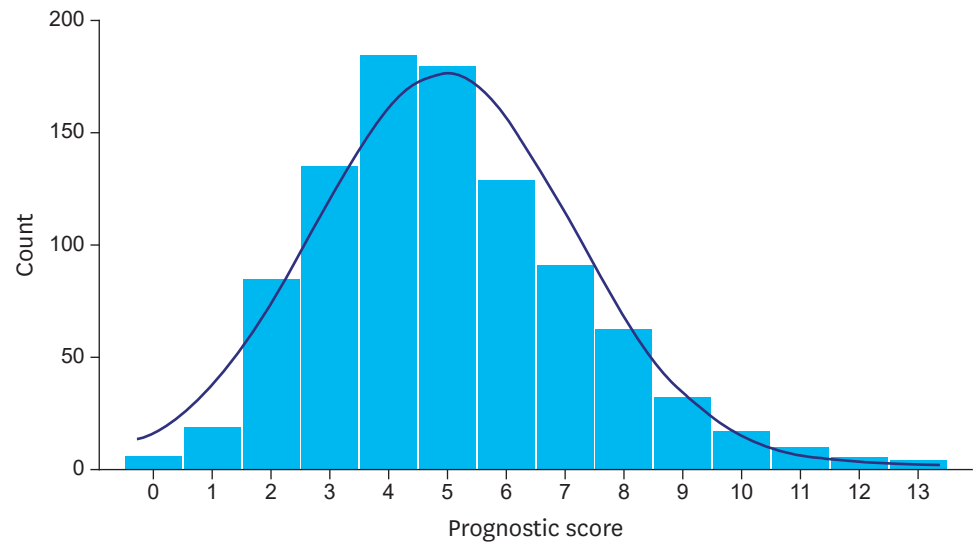
HR = hazard ratio; AST = aspartate aminotransferase; ALP = alkaline phosphatase; PTT = partial thromboplastin time; LDH = lactate dehydrogenase; PT = prothrombin time; INR = international normalized ratio; ALT = alanine aminotransferase.

**Table 3.** Multivariable Cox regression analysis of the OS for prognostic factors in advanced gastric cancer

Prognostic factors of poor survival	HR (99% CI) for mortality	P-value
Presence of a primary tumor	1.31 (1.05–1.62)	0.0014
Poor/unknown tumor differentiation	1.33 (1.08–1.64)	0.0005
Time to progression since prior therapy <6 mo	1.35 (1.10–1.66)	0.0002
ECOG PS 1	1.39 (1.12–1.73)	0.0001
Presence of peritoneal metastases	1.49 (1.22–1.83)	<0.0001
High ALP level	1.28 (1.03–1.60)	0.0030
Low lymphocyte level	1.31 (1.05–1.63)	0.0015
High LDH level	1.31 (1.05–1.63)	0.0019
Low albumin level	1.33 (1.07–1.65)	0.0006
High AST level	1.37 (1.06–1.76)	0.0014
High neutrophil level	1.52 (1.17–1.99)	<0.0001
Low sodium level	2.04 (1.54–2.71)	<0.0001

OS = overall survival; HR = hazard ratio; CI = confidence interval; ECOG = Eastern Cooperative Oncology Group; PS = performance status; ALP = alkaline phosphatase; LDH = lactate dehydrogenase; AST = aspartate aminotransferase.

tumors (63%), and diffuse tumor subtype (38%) (**Table 1**), which suggests this analysis included many critically ill patients. The Kaplan-Meier survival curve based on data pooled from both studies showed a median OS of 6.9 months, 12-month survival rate of 29% (95% confidence interval [CI], 26.1–32.0), and 24-month survival rate of 9.1% (95% CI, 6.8–11.8) (**Supplementary Fig. 1**). Results of the univariate analyses for clinical characteristics are summarized in **Table 1**, and for laboratory parameters in **Table 2**. It is important to note that the target populations for the RAINBOW and REGARD studies were very similar. The multivariable stepwise Cox regression with clinical and laboratory parameters identified 12 factors associated with poor prognosis for OS (**Table 3**): presence of peritoneal metastases, ECOG PS of 1, presence of a primary tumor, time to progression since prior therapy <6 months, poor/unknown tumor differentiation, abnormally low blood levels of albumin,



**Fig. 1.** Histogram of prognostic scores among the 953 patients. The distribution approximates a Gaussian distribution.

sodium, and/or lymphocytes (below the institutional normal range), and abnormally high blood levels of neutrophils, AST, ALP, and/or LDH (above the institutional normal range).

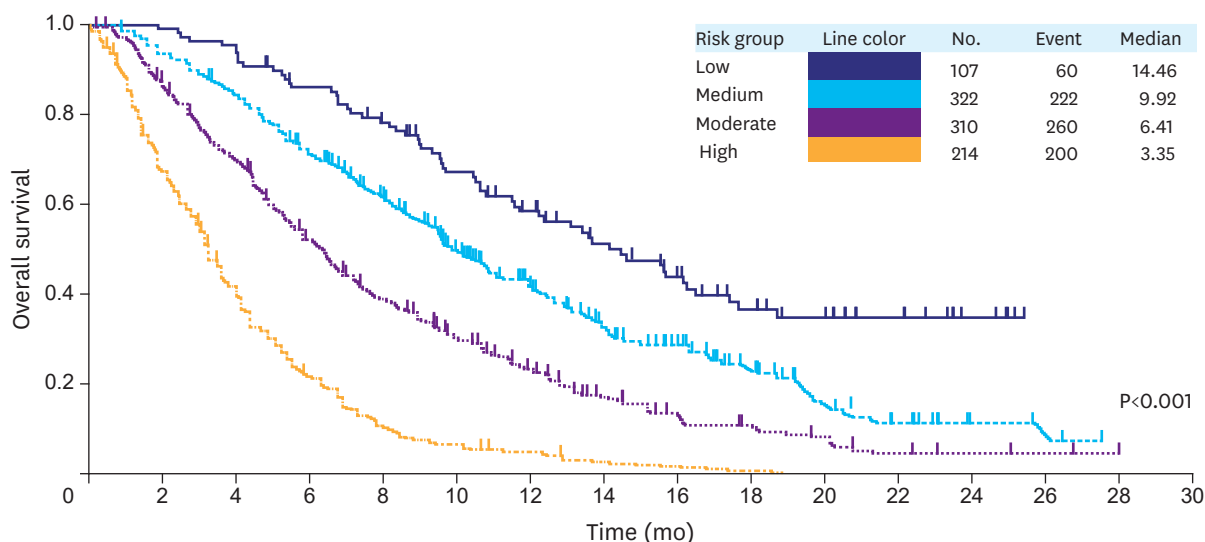
A prognostic score can be created using patient-level linear prediction (xbeta). Since the risks (as measured by HRs) of these factors had a similar magnitude (except low sodium), it was possible to create a simpler prognostic score without losing too much information for each patient by counting the number of prognostic factors (thus regarding their impact as equal, except low sodium, which was counted twice due to its relative size of HR being the square of others). Accordingly, the prognostic score ranged from 0 to 13, and approximately followed a normal distribution (**Fig. 1**).

A prognostic index was then devised using prognostic scores as follows: “Low”= 0–2, “Medium”=3–4, “Moderate”=5–6, and “High”=7–13 (**Table 4**). Kaplan-Meier survival curves were generated for each of these 4 indices (**Fig. 2**), and a clear survival curve-separation was seen for the 4 risk groups ( $P < 0.0001$ ). The median OS values for the high-, moderate-, medium-, and low-risk groups were 3.4, 6.4, 9.9, and 14.5 months (**Fig. 2**), respectively. Discriminatory performance of the prognostic index had a Harrell's C-index of 0.66 (95% CI, 0.64–0.68). The over-fitting optimism due to model building was 0.01, as assessed by mean optimism of 200 bootstrapping samples, which suggested very little over-fitting of the model.

Thirteen of the 15 QoL scales were significant in the univariate analyses (**Supplementary Table 1**). However, when included with the 12-selected clinical and laboratory factors, only patient-reported appetite loss was an independent prognostic factor ( $P < 0.0001$ ,

**Table 4.** Prognostic index (No. of patients in each group=953)

Index	Score	Total No. of included patients (%)
Low	0–2	107 (11.2)
Medium	3–4	322 (33.8)
Moderate	5–6	310 (32.5)
High	7–13	214 (22.5)



At risk	0	2	4	6	8	10	12	14	16	18	20	22	24	26	28
Low	107	106	102	90	81	64	52	42	33	24	17	11	6	0	0
Medium	322	301	267	221	182	131	96	67	51	32	18	11	4	3	0
Moderate	310	271	213	153	112	81	57	35	24	16	12	5	3	2	0
High	214	141	82	44	22	13	8	4	2	1	0	0	0	0	0

**Fig. 2.** The Kaplan-Meier curves showing OS for each of the 4 risk groups determined by the prognostic factors. The median survival and the patients at risk for each of these groups are also presented. OS = overall survival.

**Supplementary Table 2).** The HRs of each of the 12 previous factors were relatively unchanged by inclusion of appetite loss in the model.

## DISCUSSION

To the best of our knowledge, this is the largest global RCT dataset used to date to generate a prognostic index for second-line gastric cancer chemotherapy. The large sample size offers opportunities to derive a more reliable prognostic index, which distinguishes the current work from prior observations, most utilizing very limited datasets. Based on individual patient data pooled from 1,020 patients in 2 large phase III studies (RAINBOW and REGARD), we identified 12 clinical and laboratory factors that predict the survival of patients with advanced gastric/GEJ cancer after first-line chemotherapy: peritoneal metastases, ECOG PS of 1, the presence of a primary tumor, time to progression since prior therapy <math>< 6</math> months, poor/unknown tumor differentiation, abnormally low blood levels of albumin, sodium, and/or lymphocytes, and abnormally high blood levels of neutrophils, AST, ALP, and/or LDH. These factors were used to generate a prognostic index that divides patients into 4 risk groups (median OS by risk [months]: high=3.4, moderate=6.4, medium=9.9, and low=14.5), ranging from low to high risk of death. The discrimination power of this prognostic index, calculated using Harrell's C-index [20], is illustrated by the clear separation of the Kaplan-Meier survival curves for OS, along with the large range, 3.4 months to 14.5 months, in median survival time and a discrimination performance as measured by Harrell's C-index of 0.66. As the C-index is data-dependent and impacted by non-comparable patient-pairs (e.g., both patients with censored OS), 0.66 is comparable to that of many widely used prognostic systems in oncology such as the Child-Pugh system and albumin-bilirubin (ALBI) grade in



hepatocellular carcinoma [22]. Internal validation was conducted through use of bootstrap validation, which revealed very little over-fitting of the model, with a mean optimism of 0.01. However, independent external validation of the model is warranted.

We extended the analyses by including baseline QoL data from the same studies, which found patient-reported appetite loss to be an additional independent prognostic factor. Although the clinical factor of weight-loss within the previous 3 months was prognostic in the univariate analyses, the subjective assessment of appetite had independent prognostic value. Among other disease-related symptoms and aspects of patient well-being, this symptom apparently has the greatest impact on OS. Although correlations existed among many QoL scales, only appetite loss showed significant contribution of additional power to predict patient's prognosis after controlling the 12-selected strong prognostic factors. All other scales may be prognostic to some extent (as shown in the univariate analysis), but did not meet statistical criteria to qualify as prognostic factors, given that 12 strong prognostic factors were included in the model. However, lack of standardized methods to assess patient-reported appetite loss in clinical practice may limit its use in a prognostic index.

Despite several attempts to develop a prognostic index for gastric cancer, little remains known about the prognostic factors for metastatic gastric cancer, especially in the second-line setting. Most studies either focused on first-line therapy or gastric resection [7,10,14,23-25]. Chau and colleagues [7] identified 4 independent prognostic factors in a large study (1,080 patients), but this was performed exclusively in the United Kingdom, and was based on first-line treatment. Three of the 4 factors (PS, peritoneal metastasis, and high ALP) were also identified as prognostic factors in our study. Takahari and colleagues [10] also identified 4 prognostic factors (PS, ALP, number of metastatic sites, and no prior gastrectomy) exclusively in Asian patients. Only the first 2 factors were similar to those reported by Chau and colleagues [7], and 3 were identified in our study. Kanagavel and colleagues [12] identified 3 independent prognostic factors in patients with advanced gastric cancer receiving second-line therapy. PS and time to disease progression after first-line therapy were also identified in our analyses. In addition, Kanagavel and colleagues [12] included hemoglobin level as a factor. However, since hemoglobin levels are readily affected by blood transfusion or by erythropoietin, the reliability of this factor should be interpreted with caution. Moreover, this study may lack sufficient power due to small sample size (126 patients). In our study, high AST was identified as a strong prognostic factor in the univariate analysis ( $P < 0.0001$ ), although liver metastasis, which may cause an increase in AST, was not identified as a prognostic factor ( $P = 0.070$ ). This is consistent with another study [26] that identified AST as a prognostic factor, and suggests that serum AST could be a much stronger prognostic factor than liver metastasis.

Generating a generally applicable prognostic index is complicated by large variations in the incidence and mortality of gastric cancer globally, as well as substantial treatment variations in different countries. For example, gastric cancer represents only 1.3% of new cancers in the US, but accounts for 13% of all new cancers in China and the Western Pacific [2]. In addition, while only 2% of cancer-related deaths in the US are from gastric cancer, gastric cancer accounts for 15% and 14% of cancer-related deaths in China and the Western Pacific, respectively [2]. Moreover, considerable regional differences in treatment protocols exist [10]. It is therefore a strength of this analysis that it included not only a large number of patients, but also 27 (RAINBOW) and 29 (REGARD) countries from 6 continents [16,17].

Discussions of statistical methods and limitations are addressed in detail within the supplementary material section (**Supplementary Text 1**). In addition, the results presented here are derived from clinical trial data of patients who had undergone selection processes. In general practice, patients may present with characteristics or conditions that could compromise the validity of the predictive models used here. Additional studies will be required to identify a simplified prognostic model that takes into consideration different patient characteristics or conditions. Furthermore, relevant clinicopathological parameters that affect the laboratory parameters may need to be considered for clinical application of this model.

In summary, individual responses to chemotherapy are largely variable, and many patients have disease progression after first-line chemotherapy [7,10,12]. Second-line chemotherapy is not appropriate for all patients. Therefore, prognostic factors that can be applied with a high degree of confidence and across geographic regions become important decision-supporting tools. The identification of a prognostic index will help with appropriate treatment decisions, as well as enhance patient stratification in RCTs to achieve robust results. Several reports have demonstrated the feasibility and potential use of laboratory data in the stratification of patients in clinical trials [27-29]. Our current study raises the importance of assessing novel tissue-based prognostic biomarkers for their discriminatory ability over and above the prognostic index identified here by easily obtainable clinicopathological parameters. The large variation in patient survival and widely differing prognostic profiles underscore the need for RCTs balancing these profiles between treatment arms to obtain unbiased estimates of treatment effects.

## ACKNOWLEDGEMENTS

We thank all patients and institutions involved in this study. The authors also thank Michael Ossipov, Angela Lorio, and Jeanne Claypoole of inVentiv Health Clinical for assistance with writing and editorial support. Eli Lilly and Company contracted inVentiv Health Clinical for writing and editorial services.

## SUPPLEMENTARY MATERIALS

### Supplementary Text 1

Discussion of statistical methods and limitations

[Click here to view](#)

### Supplementary Table 1

QoL factors (EORTC QLQ-C30): baseline summary and univariate analysis

[Click here to view](#)

### Supplementary Table 2

Multivariable Cox regression analysis of OS for prognostic factors including QoL in advanced gastric cancer

[Click here to view](#)

### Supplementary Table 3

Covariates with Spearman correlation coefficient ( $r$ ) >0.4

[Click here to view](#)

### Supplementary Table 4

Regression analysis of the OS for prognostic factors including low sodium level, ECOG PS 1, and presence of peritoneal metastases

[Click here to view](#)

### Supplementary Fig. 1

The Kaplan-Meier curve for the pooled patient population showing probability of OS. The median survival and the patients at risk are also presented.

[Click here to view](#)

## REFERENCES

1. Ferlay J, Soerjomataram I, Dikshit R, Eser S, Mathers C, Rebelo M, et al. Cancer incidence and mortality worldwide: sources, methods and major patterns in GLOBOCAN 2012. *Int J Cancer* 2015;136:E359-E386. [PUBMED](#) | [CROSSREF](#)
2. Ferlay J, Soerjomataram I, Ervik M, Dikshit R, Eser S, Mathers C, et al. GLOBOCAN 2012 v1.0, Cancer Incidence and Mortality Worldwide: IARC CancerBase No. 11 [Internet]. Lyon: International Agency for Research on Cancer; 2013 [cited 2015 Aug 1]. Available from: <http://globocan.iarc.fr>.
3. Howlader N, Noone AM, Krapcho M, Garshell J, Miller D, Altekruse SF, et al., eds. SEER Cancer Statistics Review, 1975–2012 (based on November 2014 SEER data submission, posted to the SEER web site, April 2015) [Internet]. Bethesda (MD): National Cancer Institute; 2015 [cited 2015 Aug 1]. Available from: [http://seer.cancer.gov/csr/1975\\_2012/](http://seer.cancer.gov/csr/1975_2012/).
4. Avital I, Distler PW, Kelsen DP, Willett CG. Cancer of the stomach. In: DeVita VT, Lawrence TS, Rosenberg SA, eds. *DeVita, Hellman, and Rosenberg's Cancer: Principles and Practice of Oncology*. 9th ed. Philadelphia (PA): Lippincott Williams & Wilkins, 2011;924-954.
5. Koh TJ, Wang TC. Tumors of the stomach. In: Feldman M, Friedman LS, Sleisenger MH, eds. *Sleisenger & Fordtran's Gastrointestinal and Liver Disease*. 7th ed. Philadelphia (PA): Saunders, 2002;829-844.
6. Layke JC, Lopez PP. Gastric cancer: diagnosis and treatment options. *Am Fam Physician* 2004;69:1133-1140. [PUBMED](#)
7. Chau I, Norman AR, Cunningham D, Waters JS, Oates J, Ross PJ. Multivariate prognostic factor analysis in locally advanced and metastatic esophago-gastric cancer--pooled analysis from three multicenter, randomized, controlled trials using individual patient data. *J Clin Oncol* 2004;22:2395-2403. [PUBMED](#) | [CROSSREF](#)
8. Chau I, Ashley S, Cunningham D. Validation of the Royal Marsden hospital prognostic index in advanced esophagogastric cancer using individual patient data from the REAL 2 study. *J Clin Oncol* 2009;27:e3-e4. [PUBMED](#) | [CROSSREF](#)
9. Koo DH, Ryoo BY, Kim HJ, Ryu MH, Lee SS, Moon JH, et al. A prognostic model in patients who receive chemotherapy for metastatic or recurrent gastric cancer: validation and comparison with previous models. *Cancer Chemother Pharmacol* 2011;68:913-921. [PUBMED](#) | [CROSSREF](#)
10. Takahari D, Boku N, Mizusawa J, Takashima A, Yamada Y, Yoshino T, et al. Determination of prognostic factors in Japanese patients with advanced gastric cancer using the data from a randomized controlled trial, Japan clinical oncology group 9912. *Oncologist* 2014;19:358-366. [PUBMED](#) | [CROSSREF](#)
11. Catalano V, Graziano F, Santini D, D'Emidio S, Baldelli AM, Rossi D, et al. Second-line chemotherapy for patients with advanced gastric cancer: who may benefit? *Br J Cancer* 2008;99:1402-1407. [PUBMED](#) | [CROSSREF](#)

12. Kanagavel D, Pokataev IA, Fedyanin MY, Tryakin AA, Bazin IS, Narimanov MN, et al. A prognostic model in patients treated for metastatic gastric cancer with second-line chemotherapy. *Ann Oncol* 2010;21:1779-1785.  
[PUBMED](#) | [CROSSREF](#)
13. Outcomes of cancer treatment for technology assessment and cancer treatment guidelines. *American Society of Clinical Oncology. J Clin Oncol* 1996;14:671-679.  
[PUBMED](#) | [CROSSREF](#)
14. Sun KY, Xu JB, Chen SL, Yuan YJ, Wu H, Peng JJ, et al. Novel immunological and nutritional-based prognostic index for gastric cancer. *World J Gastroenterol* 2015;21:5961-5971.  
[PUBMED](#)
15. Dorcaratto D, Grande L, Ramón JM, Pera M. Quality of life of patients with cancer of the oesophagus and stomach. *Cir Esp* 2011;89:635-644.  
[PUBMED](#) | [CROSSREF](#)
16. Fuchs CS, Tomasek J, Yong CJ, Dumitru F, Passalacqua R, Goswami C, et al. Ramucirumab monotherapy for previously treated advanced gastric or gastro-oesophageal junction adenocarcinoma (REGARD): an international, randomised, multicentre, placebo-controlled, phase 3 trial. *Lancet* 2014;383:31-39.  
[PUBMED](#) | [CROSSREF](#)
17. Wilke H, Muro K, Van Cutsem E, Oh SC, Bodoky G, Shimada Y, et al. Ramucirumab plus paclitaxel versus placebo plus paclitaxel in patients with previously treated advanced gastric or gastro-oesophageal junction adenocarcinoma (RAINBOW): a double-blind, randomised phase 3 trial. *Lancet Oncol* 2014;15:1224-1235.  
[PUBMED](#) | [CROSSREF](#)
18. Eisenhauer EA, Therasse P, Bogaerts J, Schwartz LH, Sargent D, Ford R, et al. New response evaluation criteria in solid tumours: revised RECIST guideline (version 1.1). *Eur J Cancer* 2009;45:228-247.  
[PUBMED](#) | [CROSSREF](#)
19. Aaronson NK, Ahmedzai S, Bergman B, Bullinger M, Cull A, Duez NJ, et al. The European Organization for Research and Treatment of Cancer QLQ-C30: a quality-of-life instrument for use in international clinical trials in oncology. *J Natl Cancer Inst* 1993;85:365-376.  
[PUBMED](#) | [CROSSREF](#)
20. Harrell FE Jr, Lee KL, Mark DB. Multivariable prognostic models: issues in developing models, evaluating assumptions and adequacy, and measuring and reducing errors. *Stat Med* 1996;15:361-387.  
[PUBMED](#) | [CROSSREF](#)
21. Fayers PM, Aaronson NK, Bjordal K, Groenvold M, Curran D, Bottomley A. *EORTC QLQ-C30 Scoring Manual*. 3rd ed. Brussels: European Organisation for Research and Treatment of Cancer, 2001.
22. Johnson PJ, Berhane S, Kagebayashi C, Satomura S, Teng M, Reeves HL, et al. Assessment of liver function in patients with hepatocellular carcinoma: a new evidence-based approach-the ALBI grade. *J Clin Oncol* 2015;33:550-558.  
[PUBMED](#) | [CROSSREF](#)
23. Kusano T, Shiraishi N, Shiroshita H, Etoh T, Inomata M, Kitano S. Poor prognosis of advanced gastric cancer with metastatic suprapancreatic lymph nodes. *Ann Surg Oncol* 2013;20:2290-2295.  
[PUBMED](#) | [CROSSREF](#)
24. Louvet C, Carrat F, Mal F, Mabro M, Beerblock K, Vaillant JC, et al. Prognostic factor analysis in advanced gastric cancer patients treated with hydroxyurea, leucovorin, 5-fluorouracil, and cisplatin (HLFP regimen). *Cancer Invest* 2003;21:14-20.  
[PUBMED](#) | [CROSSREF](#)
25. Rougier P, Ducreux M, Mahjoubi M, Pignon JP, Bellefqih S, Oliveira J, et al. Efficacy of combined 5-fluorouracil and cisplatin in advanced gastric carcinomas. A phase II trial with prognostic factor analysis. *Eur J Cancer* 1994;30A:1263-1269.  
[PUBMED](#) | [CROSSREF](#)
26. Chen SL, Xue N, Wu MT, Chen H, He X, Li JP, et al. Influence of preoperative serum aspartate aminotransferase (AST) level on the prognosis of patients with non-small cell lung cancer. *Int J Mol Sci* 2016;17:1474-1486.  
[PUBMED](#) | [CROSSREF](#)
27. Zhang K, Lai Y, Axelrod R, Campling B, Hyslop T, Civan J, et al. Modeling the overall survival of patients with advanced-stage non-small cell lung cancer using data of routine laboratory tests. *Int J Cancer* 2015;136:382-391.  
[PUBMED](#) | [CROSSREF](#)
28. Watine J, Friedberg B. Laboratory variables and stratification of metastatic colorectal cancer patients: recommendations for therapeutic trials and for clinical practice guidelines. *Clin Chim Acta* 2004;345:1-15.  
[PUBMED](#) | [CROSSREF](#)

29. Watine J, Friedberg B, Bouarioua N. Biological variables and stratification of patients with inoperable non-small-cell bronchial cancer: recommendations for future trials. *Cancer Radiother* 2002;6:209-216.

[PUBMED](#) | [CROSSREF](#)