

Erratum

Structural insights into the EB1–APC interaction

Srinivas Honnappa, Corinne M John, Dirk Kostrewa, Fritz K Winkler and Michel O Steinmetz

The EMBO Journal (2005) 24, 872. doi:10.1038/sj.emboj.7600590

Correction to: *The EMBO Journal* (2005) 24, 261–269. doi:10.1038/sj.emboj.7600529

Due to a typesetting error, Figure 1 of the above article was published incorrectly in print. The correct figure is reproduced below.

The Publisher would like to apologise for any inconvenience this may have caused.

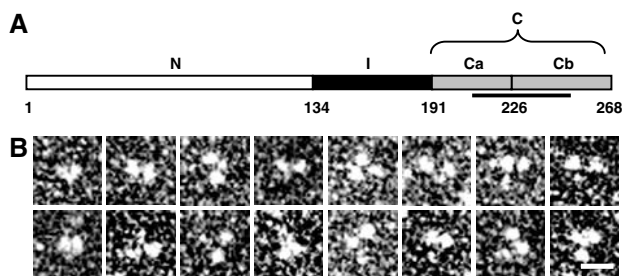


Figure 1 Molecular organization of human EB1. (A) Schematic representation of the domain organization of human EB1. Domains N, I, and C (subdivided in Ca and Cb) are depicted in white, black, and gray, respectively. Corresponding domain boundaries are indicated by residue positions. The unique EB1-like sequence motif is highlighted by a line. (B) High-magnification TEM gallery of glycerol sprayed/rotary metal shadowed EB1 specimens. Scale bar, 10 nm.