



Published in final edited form as:

Mucosal Immunol. 2017 September ; 10(5): 1259–1269. doi:10.1038/mi.2016.118.

Enrichment of herpes simplex virus type 2 (HSV-2) reactive mucosal T cells in the human female genital tract

Christine M. Posavad^{1,2}, Lin Zhao², Lichun Dong³, Lei Jin², Claire E. Stevens³, Amalia S. Magaret^{1,2,5}, Christine Johnston^{1,3}, Anna Wald^{1,2,3,4}, Jia Zhu^{1,2}, Lawrence Corey^{1,2,3}, and David M. Koelle^{1,2,3,6,7}

¹Vaccine and Infectious Disease Division, Fred Hutchinson Cancer Research Center, Seattle, WA

²Department of Laboratory Medicine, University of Washington, Seattle, WA

³Department of Medicine, University of Washington, Seattle, WA

⁴Department of Epidemiology, University of Washington, Seattle, WA

⁵Department of Biostatistics, University of Washington, Seattle, WA

⁶Department of Global Health, University of Washington, Seattle, WA

⁷Benaroya Research Institute, Seattle, WA

Abstract

Local mucosal cellular immunity is critical in providing protection from HSV-2. To characterize and quantitate HSV-2-reactive mucosal T cells, lymphocytes were isolated from endocervical cytobrush and biopsy specimens from 17 HSV-2-infected women and examined *ex vivo* for the expression of markers associated with maturation and tissue residency and for functional T cell responses to HSV-2. Compared to their circulating counterparts, cervix-derived CD4+ and CD8+ T cells were predominantly effector memory T cells (CCR7–/CD45RA–) and the majority expressed CD69, a marker of tissue residency. Co-expression of CD103, another marker of tissue residency, was highest on cervix-derived CD8+ T cells. Functional HSV-2 reactive CD4+ and CD8+ T cells responses were detected in cervical samples and a median of 17% co-expressed CD103. HSV-2 reactive CD4+ T cells co-expressed IL-2 and were significantly enriched in the cervix compared to blood. This first direct *ex vivo* documentation of local enrichment of HSV-2 reactive T cells in the human female genital mucosa is consistent with the presence of antigen-specific tissue-resident memory T cells. *Ex vivo* analysis of these T cells may uncover tissue-

Users may view, print, copy, and download text and data-mine the content in such documents, for the purposes of academic research, subject always to the full Conditions of use:http://www.nature.com/authors/editorial_policies/license.html#terms

Conflict of Interest Statement: CMP and LC are coinventors on several patents involving potential HSV vaccine candidates. D.M.K. is listed as a coinventor on patents describing T cell responses to HSV-2 and is a consultant to Agenus Inc. LC is on the scientific advisory board for and holds stock (<1% of company) in Immune Design Corp. AW received grants from Agenus, Genentech, Genocoea, Gilead, and Vical, received royalties from UptoDate, and has been a consultant for Aicuris, Eisai, and Amgen. C.J. has received research support from Aicuris GmbH.

Author Contributions: C.P. conceived the study and designed the experiments, C.P., L.Z., L.D. and L.J. performed the experiments, C.S. obtained the clinical samples, A.M. provided statistical guidance and analysis, C.J. and A.W. supervised the clinical staff and provided input related to the clinical study design, J.Z., L.C. and D.K. provided scientific input related to study design, C.P. and D.K. wrote the manuscript, and all authors edited the manuscript and contributed to the discussion.

specific mechanisms of local control of HSV-2 to assist the development of vaccine strategies that target protective T cells to sites of HSV-2 infection.

Introduction

HSV-2 is one of the most common sexually transmitted infections (STIs) worldwide, is the major cause of genital ulcer disease, and causes an incurable, lifelong infection. HSV-2 infection increases the risk of HIV acquisition (1). HSV-2 reactivation and shedding still occur in persons taking antiviral therapy (2). The development of prophylactic and therapeutic vaccines for HSV-2 infection has been challenging with several failures for prophylactic vaccines and limited success for immunotherapy (3–5).

Because HSV-2 is acquired at mucosal surfaces, local T cells are relevant to initial viral replication and subsequent pathogenesis. Murine studies have elucidated many aspects of local T cell immunity to HSV-2 including trafficking of T cells to sites of active infection, persistence of T cells at sites of prior HSV-2 exposure, effector mechanisms, and vaccine strategies that target T cells to sites of HSV-2 exposure (6–8). However, data obtained in animal models of HSV-2 and other pathogens have been difficult to translate to the natural human host. Intravaginal inoculation of HSV kills mice acutely via ascending neurologic or autonomic infection and surviving mice do not spontaneously recur (9, 10), while humans are seldom killed by primary infection and almost all HSV-2-infected persons have recurrent shedding from the genital tract (11). In the present study, we seek to confirm and extend animal data in immunocompetent women.

While numerous studies characterize the T cell response to HSV in human blood, skin, ganglia, and eye [reviewed in (12)], the female reproductive tract (FRT) has received less attention. We detected HSV-2 reactive T cell responses in the human female uterine cervix by non-specific *in vitro* polyclonal T cell expansion and demonstrated responses during both lesional and non-lesional time periods, persisting during suppressive antiviral therapy (13). Recently, we extended these findings and showed the frequent and persistent detection of HSV-2 reactive T cells from cervical cytobrush specimens collected from HSV-2 infected women that were predominantly CD4+ and directed at a broad range of HSV-2 proteins (14). These data suggest that T cell responses to HSV-2 are resident at mucosal sites of HSV-2 infection and may be involved in limiting the clinical consequences of secondary HSV-2 infection from endogenous reactivation or exogenous reinfection (13, 14).

Ex vivo analysis of these cells allows unbiased characterization of the cellular composition, function, and phenotype of the local T cell response to HSV-2. In the present study, we obtained cervical samples by cytobrush and biopsy methods to better characterize HSV-2 reactive T cells present in the FRT in the context of the total FRT T cell population.

Results

Subjects and specimens

We studied 17 HSV-2 seropositive women; of these, 6 were co-infected with HSV-1 (Table 1). The median age of the women was 39 years (range 22–68 years) and most were white

(88.2%). Participants had reported symptomatic genital HSV-2 infection for a median of 11 years (range 1.1–40.8 years). We also enrolled 2 women who were HSV-1 and -2 seronegative (HSVneg) with a median age of 39 years (26 and 51 years) and both were white. We studied 11 cytobrush samples and 12 cervical biopsies from the HSV-2 infected participants and 2 cytobrush samples from the HSVneg women. From 6 of the HSV-2 infected participants, we received both cervical samples. All HSV-2 infected participants were asymptomatic when specimens were collected. We obtained a cervicovaginal lavage (CVL) sample from 14 of the 17 HSV-2 infected women and both of the HSVneg women at the same visit we obtained other mucosal samples and all CVL samples were negative for HSV DNA.

Quantitation and phenotype of total CD3+ T cells

Total T cells isolated from PBMC, cervical cytobrushes and biopsies were phenotyped by flow cytometry. The gating strategy is depicted for a representative PBMC and biopsy sample (Figure 1A) and from a representative cervical cytobrush (Supplemental Figure 1A). Cervical biopsies yielded significantly more total CD3+ cells compared to cervical cytobrush samples. The median total yield of CD3+ cells from the 12 cervical biopsies was 8,421 (range 3,234–81,845 cells) compared to a median of 1,908 (range 972–12,117 cells) from the 11 cervical cytobrush samples ($P=0.0011$) (Figure 1B left). Total CD3+ cells from cytobrushes were comprised predominantly of CD4+ T cells with a median of 71.1% CD4+ (range 40–78.3%) and 21.8% CD8+ cells (range 9.7–40.6%) ($P=0.0033$ comparing the proportion of CD4+ versus CD8+ T cells) (Figure 1B right). In contrast, CD3+ T cells from biopsies were more balanced in their composition of CD4+ and CD8+ T cells: CD3+ cells from biopsies were comprised of a median of 45.6% CD4+ (range 25.9–65.9%) and 43.8% CD8+ cells (range 29.7–72.7%) ($P=0.78$) (Figure 1B right).

The maturational profile of CD4+ and CD8+ T cells from PBMC and cervical samples was assessed using surface CCR7 and CD45RA levels. While models of memory T-cell subsets, commitment, and plasticity continue to evolve, these markers (Figure 1A, right) provide a useful framework for progression of T cells from naïve to terminally differentiated effector cells (15). Representative paired dotplots (Figure 1A) and summarized data (Figure 1C) show that total CD4+ T cells isolated from cervical biopsies were predominantly effector memory T cells (T_{EM}) (CCR7–/CD45RA–) with much lower percentages of central memory (T_{CM}) (CCR7+/CD45RA–), naïve (CCR7+/CD45RA+) and T_{EMRA} cells (CCR7–/CD45RA+). Similarly, total CD8+ T cells isolated from cervical biopsies were predominantly T_{EM} (Figure 1A and C). The predominance of T_{EM} (CCR7–/CD45RA–) in total CD4+ and CD8+ T cells was observed in 3 cytobrush samples from which we had sufficient cells for analysis (Supplemental Figure 1A). In contrast, PBMC-derived CD4+ T cells were comprised of a broad mixture of T_{CM} , T_{EM} , and naïve cells while PBMC-derived CD8+ T cells contained all four phenotypes (representative data, Figure 1A, top right). Summarized data (Figure 1C) from 7 HSV-2+ participants show the median proportions of T_{EM} for both CD4+ and CD8+ T cell subsets were significantly greater for cervix (medians 87.3% and 90.9% for CD4+ and CD8+ T cells, respectively) compared to blood (medians 23.8% and 29.1% for CD4+ and CD8+ T cells, respectively) ($P=0.018$ for both comparisons). The proportions of naïve and T_{CM} were significantly greater in the CD4+ T

cell subset from PBMC (medians 27% and 48%, respectively) compared to cervix (medians 1.7% and 7.9%, respectively) ($P=0.018$ for both comparisons) while there was no statistically significant difference in the median proportion of T_{EMRA} between the two compartments (1.6% for PBMC versus 0.8% for cervix, $P=0.091$). The proportions of naïve and T_{EMRA} were significantly greater in the CD8+ T cell subset from PBMC (medians 30.3% and 11.1%, respectively) compared to cervix (medians 0.6% and 2.7%, respectively) ($P=0.018$ for both comparisons) while there was no statistically significant difference in the median proportion of T_{CM} between the two compartments (10.8% versus 3.3%, $P=0.128$).

The expression of CD69 and CD103, two proteins thought to enhance retention of T cells in tissue (16, 17), was compared on total CD4+ and CD8+ T cells isolated from PBMC and cervical samples. Representative data (Figure 2A) and summarized data (Figure 2B) show that CD69 was expressed on a higher proportion of CD4+ (medians 81.1% versus 0.8%, $P=0.008$) and CD8+ T cells (medians 75.7% versus 3.2%, $P=0.008$) isolated from cervical biopsies versus blood ($n=9$). CD103 expression was also expressed on a higher proportion of CD4+ (medians 12.1% versus 0.7%, $P=0.008$) and CD8+ T cells (medians 35.7% versus 2.3%, $P=0.008$) isolated from cervical biopsies versus blood ($n=9$) (Figure 2B). Additionally, a higher proportion of CD8+ T cells from the cervical biopsies expressed CD103 compared to CD4+ T cells (medians 35.7% versus 12.1%, $P=0.015$) while the expression of CD69 was similar between the T cell subsets (medians 81.1 versus 75.7, $P=0.213$). There was a similar trend toward high expression of CD69 and CD103 on total CD4+ and CD8+ from 3 cytobrush samples that were analyzed (Supplemental Figure 1A and data not shown).

Recently, Watanabe *et al.* (18) described 4 functionally and phenotypically distinct populations of T cells isolated from the skin. Within both the CD4+ and CD8+ T cell subsets, the expression of CD69 was used to distinguish the non-circulating resident population from the recirculating population. CD69+ cells were considered resident memory (T_{RM}) and were divided into CD103+ T_{RM} and CD103- T_{RM} , while potentially recirculating populations were CD69-/CD103- and either CCR7+/L-selectin+ (T_{CM}) or CCR7+/L-selectin- (migratory memory or T_{MM}) (18). Using this classification, we measured the co-expression of CD103 and CD69 on CD4+ and CD8+ T cells isolated from the cervix and blood. Representative dotplots (Figure 2C) show that while the majority of PBMC-derived CD4+ and CD8+ T cells are CD69-/CD103-, cervix-derived CD4+ and CD8+ T cells are comprised of primarily 3 populations: CD69+/CD103+, CD69+/CD103- and CD69-/CD103- T cells. Summarizing data for total CD4+ or CD8+ T cell subsets isolated from biopsies from 9 HSV-2 infected women (Figure 2D), CD8+ T cells had similar proportions of CD69+/CD103+, CD69+/CD103- and CD69-/CD103- (medians 30.4%, 31.9% and 31.5% respectively), while CD4+ T cells were comprised primarily of CD103- cells that were either CD69- (median 46.0%) or CD69+ (median 38.7%), with a lower proportion of CD69+/CD103+ cells (median 9.5%). Interestingly, CD69+/CD103+ T cells comprised a statistically significantly greater proportion of cervix-derived CD8+ T cells compared to their CD4+ counterparts (medians 30.4% versus 9.5%, $P=0.015$). The potentially recirculating population (CD69-/CD103-) made up a median of 46.0% of CD4+ T cells and 31.5% of CD8+ T cells (Figure 2C) ($P=0.028$). The proportions of CD69+/CD103- and CD69-/CD103+ were not statistically significantly different between the T cell

subsets ($p=0.139$ and $p=0.086$, respectively). Thus, the majority of cervix-derived CD4+ T cells were CD103⁻ T_{RM} in contrast to CD8+ T cells, which were comprised of similar proportions of CD103⁺ and CD103⁻ T_{RM}. A similar trend was observed in 3 cytobrush samples that were analyzed (Supplemental Figure 1A and data not shown).

Ex vivo characterization of HSV-2 reactive CD4+ T cells derived from the cervix

HSV-2 reactive CD4+ T cells were measured *ex vivo* from T cells obtained from cervical cytobrushes and biopsies: Figure 3A displays the expression of IFN- γ by CD4+ T cells isolated from a biopsy and stimulated *ex vivo* with mock or UV-HSV-2. In total, cytobrushes and biopsies from 13 HSV-2+ women and 2 HSVneg women were examined *ex vivo* for viral reactive CD4+ T cell responses by ICS and flow cytometry. Next, we determined if the proportion of CD4+/IFN- γ + cells co-incubated with HSV-2 was significantly greater from those co-incubated with mock antigen (19). Of the 18 cervical samples tested from HSV-2 infected women, CD4+ T cells from 14 of them (9 cytobrushes and 5 biopsies) were positive for HSV-2 reactivity (Figure 3B). Data from 1 of the biopsy samples were excluded because fewer than 100 cells were gated and from 3 of the 18 cervical samples (2 cytobrushes and 1 biopsy, * on Figure 3B), the proportion of CD4+/IFN- γ + cells from UV-HSV-2 co-incubated cultures was not statistically significantly greater than those co-incubated with UV-mock antigen (all analyses $P>0.05$). The median proportion of HSV-2 reactive CD4+/IFN- γ + cells from all cervical samples with >100 cells gated was 4.45% (range 0.04–11.8%). Of the 2 cervical cytobrush samples tested from the 2 HSVneg women, both had >100 cells gated but neither were positive for HSV-2 reactive CD4+ T cells (Supplemental Figure 1B). There was no statistically significant difference in the frequency of HSV-2 reactive CD4+ T cell responses in women with and without HSV-1 coinfection: the median frequency of cervix-derived HSV-2 reactive CD4+ T cells was 5.06% in HSV-1-/2+ women ($n=9$) compared to 4.46% in HSV-1+/2+ women ($n=6$) ($p=0.317$).

We next determined if the HSV-2-reactive cervical cells expressed T_{RM} phenotypic markers. As shown for biopsy-derived cells from a representative subject (Figure 3A), approximately 17% of the CD4+ T cells that co-expressed IFN- γ in response to HSV-2 also expressed CD103. Of the 5 cervical samples tested, HSV-2 reactive CD4+ T cells co-expressed CD103 at a median frequency of 17% (range 13–75%) in contrast to matched PBMC samples where CD103 expression on HSV-2 specific CD4+ T cells ranged from 0–2% (median 0%) ($P=0.0043$) (Figure 3A and data not shown). If we assess the proportion of CD103+ and CD103⁻ CD4+ cervical T cells that are IFN- γ + (that is, HSV-2 reactive), a median of 23.1% (range 14.8–58.3%) of CD103+ cells are IFN- γ + compared to 5.5% (range 2–6.7%) of CD103⁻ cells ($P=0.0043$) (Figure 3C), suggesting that the HSV-2 specific CD4+ T cells are enriched in the CD103+ subset populating the cervix.

In a subset of HSV-2 infected participants ($n=5$), we assessed the co-expression of IFN- γ and IL-2 from HSV-2 reactive CD4+ T cells; representative dotplots are displayed in Figure 3D. All 5 of the cytobrush samples tested contained CD4+ T cells that expressed IL-2 in response to HSV-2 at frequencies ranging from 0.39% to 9.62% (median 4.17%). Interestingly, the proportion of CD4+ T cells expressing IFN- γ in response to HSV-2 expression was significantly higher in these samples, with frequencies ranging from 4.14%

to 10.58% ($P=0.043$). With one exception (Participant 4), at least 50% of total HSV-2 reactive CD4+ T cell population expressed both IFN- γ and IL-2 (Figure 3E).

Enrichment of HSV-2 reactive CD4+ T cells in cervix compared to blood

The frequency of HSV-2 reactive CD4+ T cells was measured in cervical samples and blood obtained during the same study visit. Representative data (Figure 3A) and summarized paired data (Figure 3F) are consistent with local enrichment in the FRT. Cells from both sites had statistically significantly greater expression of IFN- γ from UV-HSV-2 stimulated CD4+ T cells (Figure 3A, top dotplots) compared to UV-mock stimulated cells (Figure 3A, bottom dotplots): the net % HSV-2 reactive CD4+ T cell response from T cells derived from this cervical biopsy versus PBMC was 5.44% versus 0.14%, respectively. In total, we measured HSV-2 reactive CD4+ T cell responses *ex vivo* in cytobrush samples from 11 HSV-2+ women (Figure 3F) and in biopsy samples from 6 HSV-2+ women (data not shown) along with their corresponding PBMC. In all but one cytobrush sample, the net % HSV-2 reactive CD4+/IFN- γ + T cell response was greater in the cervical samples compared to PBMC. The median frequency of cytobrush-derived HSV-2 reactive CD4+ T cells was 5.06% compared to a median of 0.15% in PBMC ($P=0.0044$). There was a median 22-fold enrichment (range 1–82 fold) of cytobrush-derived HSV-2 reactive CD4+ T cells compared to PBMC-derived cells. Similarly, there was a 25-fold (range 3–45) enrichment of cervical biopsy-derived HSV-2 reactive CD4+ T cells compared to PBMC-derived T cells (data not shown). Therefore, these data suggest that HSV-2 reactive CD4+ T cells are enriched in the cervix compared to the circulation.

Detection of HSV-2 reactive CD8+ T cells in cervical samples

Previously, we demonstrated that HSV-2 reactive CD8+ T cell activity in cervical T cell lines was detected by ICS and flow cytometry by co-culturing the T cell lines with autologous HSV-2 infected dendritic cells (DC) (14). We adapted this stimulation method in order to determine whether HSV-2 reactive CD8+ T cells could be detected *ex vivo* in cervical biopsy samples. Figure 4A displays the expression of IFN- γ by CD8+ T cells isolated from a cervical biopsy and incubated *ex vivo* with mock DC or HSV-2 DC. In total, 6 biopsies were examined *ex vivo* for viral reactive CD8+ T cell responses by ICS and flow cytometry. As displayed in Figure 4B, 5 of the cervical biopsy samples had statistically significantly greater proportions of CD8+/IFN- γ + cells co-incubated with HSV-2 DC compared to mock DC ($P<0.05$ by Fisher's Exact Test) while no measurable HSV-2 reactive CD8+ T cells were present in a biopsy from one subject. The median frequency of HSV-2 reactive CD8+ T cells from the cervical samples was 1.06% (range 0–1.68%).

We also measured the expression of CD103 on the CD8+ T cells to determine if the HSV-2-reactive CD8+ cervical T cells expressed T_{RM} phenotypic markers. As shown for biopsy-derived cells from a representative subject (Figure 4A), 16.7% of the CD8+ T cells that expressed IFN- γ in response to HSV-2 DC also co-expressed CD103. Of the 5 cervical samples with detectable HSV-2 reactive CD8+ T cells, the median proportion of HSV-2 reactive CD8+ T cells that co-expressed CD103 was 16.7% (range 0–24.4%). If we assess the proportion of CD103+ and CD103– CD8+ cervical T cells that are IFN- γ + (that is, HSV-2 reactive), a median of 1.5% (range 0–2.1%) of CD103+ cells are IFN- γ + compared

to 1.6% (range 0.4–1.8%) of CD103⁻ cells (P=0.89) (Figure 4C). These data suggest that HSV-2 reactive CD8⁺ T cells derived from the cervix are present in similar proportions of CD103⁺ and CD103⁻ populations.

Discussion

Our *ex vivo* analysis of cervix-derived T cells from HSV-2 infected women revealed that HSV-2 reactive T cells are present at this mucosal site and in sufficient quantities to analyze both phenotypic markers and functional characteristics. Total CD4⁺ and CD8⁺ T cells were primarily of the T_{EM} phenotype (CCR7⁻/CD45RA⁻) (15) and the expression of CD69 on the majority of both subsets distinguished them from PBMC. The analysis of CD103 and CD69 on these cells revealed 3 distinct populations of both CD4⁺ and CD8⁺ T cells: CD69⁺/CD103⁺ cells were more abundant in the CD8⁺ T cell subset compared to the CD4⁺ T cell subset, while the CD4⁺ T cell subset was predominantly comprised of CD69⁺/CD103⁻ cells. HSV-2 reactive CD4⁺ T cells expressed IFN- γ , IL-2 and CD103 and were significantly enriched in this mucosal compartment compared to the blood. Functional HSV-2 reactive CD8⁺ T cells were also detected in the cervix and similar proportions were CD103⁺ and CD103⁻.

In our prior studies, non-specific polyclonal *in vitro* expansion of cervix-derived lymphocytes obtained from cytobrushes allowed us to assess the phenotype of total and HSV-2 reactive CD3⁺ T cells as well as the specific viral antigens recognized by the HSV-2 reactive T cells (13, 14). Total CD3⁺ T cells were predominantly CD4⁺ and HSV-2 reactive T cells could be detected in cervical T cell lines from the majority of HSV-2 infected women. Interestingly, HSV-2 reactive CD4⁺ T cells showed greater antigenic diversity than their CD8⁺ counterparts (14). The data were also consistent with local enrichment, but the non-specific polyclonal expansion prior to antigen-specific readouts left open the possibility that biased clonotype expansion could influence the relative abundance of HSV-2-reactive cells. In our current study, we therefore directly measured both the phenotype of cervix-derived total T cells and the abundance of HSV-2 CD4⁺ reactive T cells in the cervix *ex vivo*. The majority of total CD3⁺ T cells derived from the cervix by cytobrush or biopsy were CD4⁺, although CD8⁺ T cells derived from biopsies made up a greater proportion of total CD3⁺ T cells compared to those derived from cytobrushes (Figure 1). These data are similar to a comparison of the yield and profile of T cells from HIV-negative women obtained from cytobrushes and biopsy which demonstrated that both methods resulted in the isolation of higher numbers of total CD4⁺ T cells compared to CD8⁺ T cells (20). We further showed that the vast majority of total CD4⁺ and CD8⁺ T cells derived from the cervix were T_{EM} (CCR7⁻/CD45RA⁻), in contrast to blood, which had a more balanced profile of naïve, T_{EM}, T_{CM}, and T_{EMRA} (Figure 1). These data are consistent with those obtained by the study of T cells obtained from mucosal tissue from human organ donors which suggested that mucosal sites are predominantly populated with CD4⁺ and CD8⁺ T_{EM} and are stably maintained (21), although lymphocytes from the female genital tract were not analyzed in that study.

It is possible that collagenase digestion resulted in a loss of expression of cell surface markers such as CD4 and CCR7 in the biopsy samples compared to cytobrush and PBMC

samples that were processed in the absence of collagenase; this would have resulted in underreporting of the frequencies of total CD4⁺ T cells and over-reporting of T_{EM} in the biopsy samples. While tissue digestion with dispase had significant effects on many cell surface molecules, multiple rounds of low concentration of collagenase have been shown by others to have minimal effects on CD4 (22, 23). In regards to CCR7 expression, we showed that total cytobrush-derived CD4⁺ and CD8⁺ T cells from 3 participants isolated in the absence of collagenase also contained higher proportions of T_{EM} (Supplemental Figure 1A), similar to what was observed in the biopsy samples (Fig.1). Moreover, our data are consistent with a study of cervical T cells obtained by cytobrush demonstrating that the majority of CD4⁺ and CD8⁺ T cells analyzed *ex vivo* were T_{EM} (24).

T cells derived from tissues are often distinguished from circulating T cells by the expression of CD69 and CD103, both of which are thought to enhance T cell retention within peripheral tissues. Surface expression of CD69, an early leukocyte cell activation marker, has been shown to interfere with sphingosine-1-phosphate receptor function leading to T cell retention and local memory formation (16). CD103, a constituent of α E β 7 integrin, participates in T cell retention through interaction with E-cadherin expressed on epithelial cells (17). Studies of human organ donors revealed that the highest frequency of CD69 expression was on tissue-derived CD4⁺ and CD8⁺ T_{RM}, and that CD103 was most highly expressed by gut-derived CD8⁺ T cells (21, 25). Recently, the presence of 4 discrete populations of resident and recirculating memory T cells was described in human skin (18). Non-recirculating T_{RM} were CD69⁺ and divided into CD103⁺ T_{RM} versus CD103⁻ T_{RM}, the former demonstrating superior effector function but less proliferative potential (18). Based on this terminology, the majority of the cervix-derived CD4⁺ T cells we analyzed were CD103⁻ T_{RM} (high proliferative potential) while there was a significantly greater proportion of CD103⁺ T_{RM} (low proliferative potential) in the cervix-derived CD8⁺ T subset (Figure 2D). If these CD8⁺ CD103⁺ T_{RM} indeed have less proliferative potential, it may explain at least in part why in our previous study of *in vitro* polyclonally expanded cervix-derived T cells were predominantly CD4⁺ (14). Importantly, it emphasizes the need to analyze T cells *ex vivo* to more accurately quantitate the proportions of resident and recirculating T cells within the cervix to achieve an unbiased assessment of the phenotypic makeup of these mucosal T cells.

Approximately 17% of the HSV-2 reactive CD4⁺ and CD8⁺ T cells derived from the cervix expressed CD103. While a higher proportion of total cervix-derived CD8⁺ T cells expressed CD103 compared to total cervix-derived CD4⁺ T cells, interestingly, HSV-2 CD4⁺ T cells were enriched in the CD103⁺ population compared to the HSV-2 reactive CD8⁺ T cells, which were equally distributed among the CD103⁺ and CD103⁻ populations. While we cannot rule out the possibility that T cell stimulation results in the downregulation of CD103 on the HSV-2 reactive T cells, further analysis will be required to determine the relative contributions of CD103⁺ and CD103⁻ populations and whether the cervix-derived HSV-2 reactive T cells are comprised of non-recirculating CD69⁺/CD103⁻ T_{RM} as described by Watanabe et al. (18). Recently, we have optimized the stimulation of blood-derived HSV-2 reactive CD8s using cross-presentation (26) and are employing this strategy to more fully assess the quantity and phenotype of HSV-2 reactive CD8⁺ T cells populating the cervix. Our ability to analyze cervix-derived HSV-2 reactive CD8⁺ T cells *ex vivo* will allow us to

more accurately characterize the functional capacity of T cells residing in this important site of HSV-2 infection and reactivation. This is especially important for qualitative analysis of cells with apparently decreased *in vitro* proliferative potential such as CD8 α (+)/beta(-) T cells, that reside in skin at the dermalepidermal junction and appear to play an important role in immunosurveillance (27).

The role of CD4⁺ T cells within tissues has been largely understudied compared to their CD8⁺ T cell counterparts. Evidence suggests that CD4⁺ T_{RM} predominate in tissue and are integral for *in situ* protective immunity in mucosal sites including the lung and the vagina (28–31). Recently, elegant parabiosis experiments demonstrated that uterine CD4⁺ T_{RM} generated by mucosal immunization with a candidate *Chlamydia* vaccine were required for optimal protection from lethal challenge (32). A protective role of IFN- γ has been demonstrated in several models of mucosal viral infection. CD4⁺ T cell-derived IFN- γ was necessary for generating lung-resident CD103⁺ CD8⁺ T_{RM} after influenza virus infection in mice; in the absence of this CD4⁺ T cell help, CD8⁺ T cells were impaired in their ability to mediate protection against viral challenge (31). In the murine vaginal model of HSV, the expression of IFN- γ from CD4⁺ T cells was critical for CD8⁺ T cell mobilization and protection from lethal HSV infection (30, 33). In the current study, the proportion of HSV-2 reactive CD4⁺ T cells expressing IFN- γ was higher than those producing IL-2 and both were well above the level of reactivity of 0.30% noted in our cross-sectional study of PBMC from 67 HSV-2-infected persons (34). The *ex vivo* analysis of HSV-2 reactive T cells confirmed our initial observations (13, 14) that HSV-2-reactive T cells are significantly enriched in the cervix compared to blood (Figure 3F). Further study of the factors produced by cervix-derived HSV-2 reactive CD4⁺ T cells will be required to assess the possible protective mechanism(s) of these cells.

To our knowledge, this is the first demonstration of HSV-2 reactive T cell functional responses measured *ex vivo* from a mucosal surface. It is possible that the UV-HSV-2 or HSV-DC stimulation of the cervix-derived T cells triggered non-antigen specific T cell responses. However, we did not detect HSV-2 reactive CD4⁺ T cells *ex vivo* in cervical T cells obtained from 2 HSVneg women. Moreover, non-specific polyclonal expansion of cervical cytobrush-derived T cells from 5 of the HSV-2 infected participants contained HLA-restricted CD4⁺ and CD8⁺ T cells that were reactive to HSV-2 peptides (14), suggesting the presence of bona fide HSV-2 reactive T cells in the initial cervical cytobrush sample.

Most recognized HSV-2 recurrences are on the external genitalia in men and women. However, the cervix also appears to be a physiologically significant site of infection. HSV infection of the cervix, including ulcers, has been demonstrated by colposcopy examination, most frequently in the context of primary infection (35), while the prevalence of cervical involvement during typical recurrent genital herpes in women has not been well characterized. The frequent detection and enrichment of HSV-specific T cells in the cervix suggests either intermittent exposure to antigen or long-term persistence of cells after primary infection. Cervical shedding of HSV-2 tends to occur at lower rates than from other areas of the lower genital tract (36). However, HSV infection of the uterine cervix as measured by cell culture was detected in 5.2% of women in a large cross-sectional study,

(37) and we showed that HSV-2 DNA was present in 5%-7% of CVL samples (14, 38). It is also possible that the cervical cells we detected in this study are long-persisting T_{RM} that are not maintained by local re-exposure to antigen. Rigorous examination of the role of local antigen awaits the licensing of highly effective anti-HSV drugs: the currently licensed compounds have significant breakthroughs of viral shedding when measured by sensitive methods (2) such that we are not currently able to remove antigen from the system.

Our findings, placed into the current context of HSV and T-cell immunology, suggest further studies to better define FRT T_{RM} . We have published HSV-2-specific HLA class II tetramers that can detect peptide-specific CD4 T-cells *ex vivo* (39). Single-cell transcriptomics and highly dimensional protein methods (CyTOF) could be used to compare blood and FRT-derived tetramer(+) T-cells to discover further T_{RM} markers. Therapeutic vaccines that have shown activity against FRT HSV-2 shedding and lesions have reached phase II in clinical trials (5) but their effects, if any, on antigen-specific or total T_{RM} are unknown. Antiviral compounds applied directly to the FRT can reduce the risk of HSV-2 acquisition (40), have complex immune signatures (41), and remain under consideration for HIV-1 prevention. Their effect on T_{RM} should be investigated. More fundamentally, TCR CDR3 signatures can now be derived for HSV-2-specific T-cells in the circulation and in skin biopsies using next-generation sequencing methods to demonstrate overlap in cutaneous T_{RM} (27); these have not yet been applied to cervical samples.

In summary, this study assessed functional HSV-2 reactive T cell responses of lymphocytes isolated from the human FRT and showed that they are enriched in this mucosal compartment compared to the circulation. The expression of differentiation and tissue-specific markers on T cells derived from the human FRT revealed distinct populations of CD4+ and CD8+ T cells that may relate to their retention and control at sites of HSV-2 exposure and infection. The further study of T cells in the FRT *ex vivo* should provide mechanistic data that may lead to correlates of immune protection and novel strategies to prevent HSV-2 infection.

Methods

Study Population

Healthy HSV-2 seropositive and HSV-1- and HSV-2-seronegative women at least 18 years old were enrolled into IRB-approved protocols at the University of Washington Virology Research Clinic (VRC), Seattle, WA. Women were excluded from the study if they were HIV-seropositive, pregnant, or had undergone a hysterectomy. All participants provided written informed consent. HSV Western blot to detect antibodies to HSV-1 and HSV-2 was performed as previously described (42, 43).

Cervical mucosal sample collection and transport

Samples were collected between menstrual cycles to prevent menstrual blood in cervical samples. Cervicovaginal lavage (CVL) fluid was obtained in order to measure HSV DNA by washing the cervical os and posterior vaginal wall with 10 ml of phosphate buffered saline (PBS, pH 7.0) as previously described (44). Cervical T cells were collected by cytobrush or

biopsy during speculum examination. The Cytobrush Plus® Cell Collector (Medscand, CA) was inserted into the cervical os, rotated through 360° once, and immediately placed in 5 ml of cold transport medium RPMI-CVX (RPMI 1640 medium supplemented with 5 mM l-glutamine, 50 U/ml penicillin, 50 µg/ml streptomycin, and 10% human serum, 2.5 µg/ml amphotericin B, and 5 µg/ml ciprofloxacin). One biopsy was obtained using a Baby Tischler Biopsy Forceps (Wallach Surgical, Trumbull, CT, USA) with a 4.2x2.3 mm bite size. The biopsy was placed in 5 ml of RPMI-CVX. No local injection anesthetic was used before biopsy collection. The order of sample collection was CVL, cytobrush, then biopsy. Cervical samples with visible red blood cell contamination were discarded. All samples were transported to the laboratory on wet ice and processed within four hours of collection.

CVL processing

Samples were centrifuged at $1000 \times g$ for 20 min at 4°C, aliquoted and stored at -80°C as previously described (44)

Cytobrush processing

Under sterile conditions, cervical cells were isolated as previously described (14). Briefly, cells were dislodged from the sides of the tube by vortexing, the transport medium flushed through the cytobrush bristles and the cell suspension passed through a 40 µM filter into a clean 50-ml centrifuge tube. Cells were pelleted at $250 \times g$ for 10 min, resuspended in RPMI-CVX and counted.

Biopsy processing

Cells were isolated from biopsies by collagenase digestion as described in detail in (20). Briefly, biopsies were cut into smaller pieces with sterile razor blades, placed in warm collagenase digestion media [1 mg/ml collagenase type II (Sigma-Aldrich C6885, St. Louis, MO, USA) in a 1:1 mixture of PBS and R15 [RPMI 1640 medium supplemented with 5mM l-glutamine, 50 U/ml penicillin, 50 µg/ml streptomycin, and 15% heat inactivated fetal bovine serum (Gemini Bio-Products, West Sacramento, CA, USA)] with 1 unit/ml DeoxyRibonuclease I (DNase) (Sigma) and shaken at 200 rpm in a 37°C incubator for 30 minutes. Samples were then expelled through a 16-gauge needle ten times and passed through a 70 µm cell strainer into fresh R15. The tissue collected on the strainer was placed in fresh collagenase digestion media with DNase and the cycle repeated four times. During subsequent rounds of digestion, the cell suspension was centrifuged and cell pellets resuspended in R15 and kept on ice. Pooled cells from serial digestions were used for analysis.

PBMC, DC and viruses

Peripheral blood mononuclear cells (PBMC) were isolated by Ficoll-Hypaque and analyzed *ex vivo* or cryopreserved within 8 hours of venipuncture as previously described (45). Dendritic cells were generated from PBMC using granulocyte-macrophage colony-stimulating factor and interleukin-4 as previously described (46). HSV-2 strain 333 was used at a multiplicity of infection of 10 or was ultraviolet (UV)-inactivated to use as viral antigen where indicated.

Surface staining, intracellular cytokine staining (ICS) and flow cytometry

Total cells isolated from cervical samples or PBMC were surface stained to assess the expression of T cell subsets (CD4 and CD8), markers of T cell differentiation (CCR7 and CD45RA) and markers of tissue residency (CD103 and CD69). Cells were suspended in PBS and stained with the LIVE/DEAD Fixable Aqua Dead Cell Stain kit (Life Technologies, Grand Island, NY, USA). To analyze T cell differentiation, cells were washed in FACS wash [(PBS containing 1% bovine serum albumin (Sigma)], and stained with the Human Naïve/Memory T Cell Panel (CD3 APC-Cy7, CD4-PerCP-Cy5.5, CCR7-APC and CD45RA-FITC) (BD) per manufacturer's recommendation; gating focused attention on live CD3⁺ cells in the lymphocyte forward/side scatter region that were CD4⁺ or CD4-negative, the latter of which was considered CD8⁺ for quantitation. To analyze markers of tissue residency, cells were washed in FACS wash and stained with CD3-APC-Cy7, CD4-PerCP-Cy5.5, CD69-APC, and CD103-PE (all from BD).

ICS and flow cytometry was employed to assess the expression of CD103 and cytokine production (IFN- γ and IL-2) from virus reactive T cells derived from the cervix and PBMC. To measure CD4⁺ T cell responses to HSV-2 *ex vivo*, T cells isolated from cervical samples or PBMC were co-incubated with UV-mock antigen (negative control) or UV-HSV-2 for 6 hr. To measure CD8⁺ T cell responses to HSV-2 *ex vivo*, T cells isolated from cervical samples were co-incubated with mock DC (negative control) or DC previously infected for 18 hours with HSV-2 (HSV-2 DC) (50,000/well). ICS and flow cytometry was performed using a 6-color ICS panel in a 96-well plate format modified from (19) as previously described (47) with modifications. During the 6 hr incubation at 37°C, brefeldin A (10 μ g/ml, Sigma, St. Louis, MO) and costimulatory antibodies specific for CD28 and CD49d (each at 1 μ g/ml, BD) were included. Cells were stained with the LIVE/DEAD Fixable Violet Dead Cell Stain Kit (Life Technologies) and antibodies CD3-ECD (Beckman-Coulter), CD4-FITC, CD8-PerCp-Cy5.5, IFN- γ -APC, and IL-2-PE or CD103-PE (all from BD). Gating focused attention on live CD3⁺ cells in the lymphocyte forward/side scatter region that were CD4 or CD8 single-positive. Samples were collected from 96-well plates using High Throughput Sample (HTS, BD) device for analysis by the LSRII and all FACS analyses were performed using FlowJo® software (Treestar, Inc., Ashland, OR).

Measurement of HSV DNA in cervical secretions

CVL fluid was evaluated for HSV DNA by quantitative, real-time, fluorescence-based PCR as described (48).

Statistical analysis

For a cervical sample to be considered positive for HSV-2 reactive T cells, the percentage of cytokine positive T cells cultured with viral antigen needed to be statistically significantly greater than the percentage of cytokine positive T cells cultured with control antigen (mock). Fisher's exact tests were used to compare the rate of cytokine production between the stimulated (HSV-2) and negative control (mock) cells for each cytokine subset (IFN- γ , IL-2) as previously described (19); statistical significance was defined as $P < 0.05$. Results were considered invalid if fewer than 100 events were analyzed. The Wilcoxon Signed Rank test was employed to determine the differences between samples that were paired and the

Wilcoxon Rank Sum test was employed to determine the difference when samples were not paired; statistical significance was defined as $P < 0.05$ with 2-tailed α . We compared the proportion of total CD3+ T cells that were CD4+ and CD8+ cells between cervical cytobrushes and biopsies and the proportion of total CD4+ and CD8+ T cells that were CD69+, CD103+, naïve, T_{CM} , T_{EM} , and T_{EMRA} between PBMC- and biopsy-derived T cells. We also compared the proportion of HSV-2 reactive T cells from each compartment that were CD103+ and the proportion of CD103+ and CD103- cells that were IFN- γ +. Finally, we compared the frequencies of HSV-2 reactive CD4+ T cells between PBMC-, cervical cytobrush- and cervical biopsy-derived T cells.

Supplementary Material

Refer to Web version on PubMed Central for supplementary material.

Acknowledgments

This study was supported by the National Institute of Allergy and Infectious Diseases, National Institutes of Health, grants R21 AI-083418 and R01 AI-091701 to C. Posavad, P01 AI-030731 to A. Wald, C. Johnston, J. Zhu, A. Magaret and D. Koelle, R01 AI-111780 to J. Zhu, R01 AI-42528 to L. Corey and J. Zhu, and R01 AI-094019 to D. Koelle. We thank Dr. Florian Hladik for sharing his expertise regarding the isolation of T cells from cervical biopsies, Dawn Mueller and Sean Hughes for technical assistance, Dana Varon and Steve Kuntz for clinical expertise in obtaining cervical biopsies, Dr. Meei Li Huang and Anna Rashevsky for performing the HSV PCR, Emma Robinson, Adi Braun and Julie Thach for participant scheduling, Stacy Selke for clinical data management, and Cindy Hirano, Kirsten Hauge and Lynn Wang for assistance with Institutional Review Board protocols.

References

- Freeman EE, Weiss HA, Glynn JR, Cross PL, Whitworth JA, Hayes RJ. Herpes simplex virus 2 infection increases HIV acquisition in men and women: systematic review and meta-analysis of longitudinal studies. *AIDS*. 2006; 20:73–83. [PubMed: 16327322]
- Johnston C, Saracino M, Kuntz S, Magaret A, Selke S, Huang ML, et al. Standard-dose and high-dose daily antiviral therapy for short episodes of genital HSV-2 reactivation: three randomised, open-label, cross-over trials. *Lancet*. 2012; 379:641–647. [PubMed: 22225814]
- Johnston C, Koelle DM, Wald A. Current status and prospects for development of an HSV vaccine. *Vaccine*. 2014; 32:1553–1560. [PubMed: 24016811]
- Hofstetter AM, Rosenthal SL, Stanberry LR. Current thinking on genital herpes. *Curr. Opin. Infect. Dis*. 2014; 27:75–83.
- Wald, A.Fife, L.Tyding, S.Lee, P.Van Wagoner, N.Bernstein, D.Flechtner, JB.Magaret, A.Morris, A., Hetherington, S., editors. *Infect. Dis. Soc. Amer. Philadelphia, PA: 2014. Therapeutic HSV-2 vaccine (GEN003) results in durable reduction in genital lesions at 1 year.*
- Schenkel JM, Masopust D. Tissue-resident memory T cells. *Immunity*. 2014; 41:886–897. [PubMed: 25526304]
- Iijima N, Iwasaki A. Tissue instruction for migration and retention of TRM cells. *Trends Immunol*. 2015; 36:556–564. [PubMed: 26282885]
- Carbone FR. Tissue-Resident Memory T Cells and Fixed Immune Surveillance in Nonlymphoid Organs. *J. Immunol*. 2015; 195:17–22. [PubMed: 26092813]
- Parr MB, Parr EL. Intravaginal administration of herpes simplex virus type 2 to mice leads to infection of several neural and extraneural sites. *J. Neurovirol*. 2003; 9:594–602. [PubMed: 14602572]
- Khoury-Hanold W, Yordy B, Kong P, Kong Y, Ge W, Szigeti-Buck K, et al. Viral Spread to Enteric Neurons Links Genital HSV-1 Infection to Toxic Megacolon and Lethality. *Cell Host Microbe*. 2016; 19:788–799. [PubMed: 27281569]

11. Tronstein E, Johnston C, Huang ML, Selke S, Magaret A, Warren T, et al. Genital shedding of herpes simplex virus among symptomatic and asymptomatic persons with HSV-2 infection. *JAMA*. 2011; 305:1441–1449. [PubMed: 21486977]
12. Ouwendijk WJ, Laing KJ, Verjans GM, Koelle DM. T-cell immunity to human alphaherpesviruses. *Curr Opin Virol*. 2013; 3:452–460. [PubMed: 23664660]
13. Koelle DM, Schomogyi M, Corey L. Antigen-specific T cells localize to the uterine cervix in women with genital herpes simplex virus type 2 infection. *J. Infect. Dis*. 2000; 182:662–670. [PubMed: 10950757]
14. Posavad CM, Zhao L, Mueller DE, Stevens CE, Huang ML, Wald A, et al. Persistence of mucosal T-cell responses to herpes simplex virus type 2 in the female genital tract. *Mucosal Immunol*. 2015; 8:115–126. [PubMed: 24917455]
15. Geginat J, Lanzavecchia A, Sallusto F. Proliferation and differentiation potential of human CD8+ memory T-cell subsets in response to antigen or homeostatic cytokines. *Blood*. 2003; 101:4260–4266. [PubMed: 12576317]
16. Mackay LK, Braun A, Macleod BL, Collins N, Tebartz C, Bedoui S, et al. Cutting edge: CD69 interference with sphingosine-1-phosphate receptor function regulates peripheral T cell retention. *J. Immunol*. 2015; 194:2059–2063. [PubMed: 25624457]
17. Hadley GA, Higgins JM. Integrin alphaEbeta7: molecular features and functional significance in the immune system. *Adv. Exp. Med. Biol*. 2014; 819:97–110. [PubMed: 25023170]
18. Watanabe R, Gehad A, Yang C, Scott LL, Teague JE, Schlapbach C, et al. Human skin is protected by four functionally and phenotypically discrete populations of resident and recirculating memory T cells. *Sci. Transl. Med*. 2015; 7:279ra39.
19. Horton H, Thomas EP, Stucky JA, Frank I, Moodie Z, Huang Y, et al. Optimization and validation of an 8-color intracellular cytokine staining (ICS) assay to quantify antigen-specific T cells induced by vaccination. *J. Immunol. Methods*. 2007; 323:39–54. [PubMed: 17451739]
20. McKinnon LR, Hughes SM, De Rosa SC, Martinson JA, Plants J, Brady KE, et al. Optimizing viable leukocyte sampling from the female genital tract for clinical trials: an international multi-site study. *PLoS One*. 2014; 9:e85675. [PubMed: 24454917]
21. Thome JJ, Yudanin N, Ohmura Y, Kubota M, Grinshpun B, Sathaliyawala T, et al. Spatial map of human T cell compartmentalization and maintenance over decades of life. *Cell*. 2014; 159:814–828. [PubMed: 25417158]
22. Autengruber A, Gereke M, Hansen G, Hennig C, Bruder D. Impact of enzymatic tissue disintegration on the level of surface molecule expression and immune cell function. *Eur. J. Microbiol. Immunol*. 2012; 2:112–120.
23. He X, de Oliveira VL, Keijsers R, Joosten I, Koenen HJ. Lymphocyte Isolation from Human Skin for Phenotypic Analysis and Ex Vivo Cell Culture. *J. Vis. Exp*. 2016; 110:e52564.
24. Nkwanyana NN, Gumbi PP, Roberts L, Denny L, Hanekom W, Soares A, et al. Impact of human immunodeficiency virus 1 infection and inflammation on the composition and yield of cervical mononuclear cells in the female genital tract. *Immunology*. 2009; 128:e746–e757. [PubMed: 19740336]
25. Sathaliyawala T, Kubota M, Yudanin N, Turner D, Camp P, Thome JJ, et al. Distribution and compartmentalization of human circulating and tissue-resident memory T cell subsets. *Immunity*. 2013; 38:187–197. [PubMed: 23260195]
26. Jing L, Laing KJ, Dong L, Russell RM, Barlow RS, Haas JG, et al. Extensive CD4 and CD8 T Cell Cross-Reactivity between Alphaherpesviruses. *J. Immunol*. 2016; 196:2205–2218. [PubMed: 26810224]
27. Zhu J, Peng T, Johnston C, Phasouk K, Kask AS, Klock A, et al. Immune surveillance by CD8alphaalpha+ skin-resident T cells in human herpes virus infection. *Nature*. 2013; 497:494–497. [PubMed: 23657257]
28. Turner DL, Farber DL. Mucosal resident memory CD4 T cells in protection and immunopathology. *Front. Immunol*. 2014; 5:331. [PubMed: 25071787]
29. Teijaro JR, Turner D, Pham Q, Wherry EJ, Lefrancois L, Farber DL. Cutting edge: Tissue-retentive lung memory CD4 T cells mediate optimal protection to respiratory virus infection. *J. Immunol*. 2011; 187:5510–5514. [PubMed: 22058417]

30. Nakanishi Y, Lu B, Gerard C, Iwasaki A. CD8(+) T lymphocyte mobilization to virus-infected tissue requires CD4(+) T-cell help. *Nature*. 2009; 462:510–513. [PubMed: 19898495]
31. Laidlaw BJ, Zhang N, Marshall HD, Staron MM, Guan T, Hu Y, et al. CD4+ T cell help guides formation of CD103+ lung-resident memory CD8+ T cells during influenza viral infection. *Immunity*. 2014; 41:633–645. [PubMed: 25308332]
32. Stary G, Olive A, Radovic-Moreno AF, Gondek D, Alvarez D, Basto PA, et al. VACCINES. A mucosal vaccine against *Chlamydia trachomatis* generates two waves of protective memory T cells. *Science*. 2015; 348:aaa8205. [PubMed: 26089520]
33. Iijima N, Iwasaki A. T cell memory. A local macrophage chemokine network sustains protective tissue-resident memory CD4 T cells. *Science*. 2014; 346:93–98. [PubMed: 25170048]
34. Moss NJ, Magaret A, Laing KJ, Kask AS, Wang M, Mark KE, et al. Peripheral blood CD4 T-cell and plasmacytoid dendritic cell (pDC) reactivity to herpes simplex virus 2 and pDC number do not correlate with the clinical or virologic severity of recurrent genital herpes. *J. Virol.* 2012; 86:9952–9963. [PubMed: 22761381]
35. Paavonen J, Stevens CE, Wolner-Hanssen P, Critchlow CW, Derouen T, Kiviat N, et al. Colposcopic manifestations of cervical and vaginal infections. *Obst. Gynec. Survey*. 1988; 43:373–381.
36. Tanton C, Weiss HA, LeGoff J, Changalucha J, Clayton TC, Ross DA, et al. Patterns of herpes simplex virus shedding over 1 month and the impact of acyclovir and HIV in HSV-2-seropositive women in Tanzania. *Sex. Transm. Infect.* 2011; 87:406–411. [PubMed: 21653932]
37. Eggert-Kruse W, Mildener-Sandbrink B, Schnitzler P, Rohr G, Strowitzki T, Petzoldt D. Herpes simplex virus infection of the uterine cervix—relationship with a cervical factor? *Fertility and Sterility*. 2000; 73:248–257. [PubMed: 10685523]
38. Aumakhan B, Hardick A, Quinn TC, Laeyendecker O, Gange SJ, Beyrer C, et al. Genital herpes evaluation by quantitative TaqMan PCR: correlating single detection and quantity of HSV-2 DNA in cervicovaginal lavage fluids with cross-sectional and longitudinal clinical data. *Virol J.* 2010; 7:328. [PubMed: 21087488]
39. Johnston C, Zhu J, Jing L, Laing KJ, McClurkan CM, Klock A, et al. Virologic and immunologic evidence of multifocal genital herpes simplex virus 2 infection. *J. Virol.* 2014; 88:4921–4931. [PubMed: 24554666]
40. Abdool Karim SS, Abdool Karim Q, Kharsany AB, Baxter C, Grobler AC, Werner L, et al. Tenofovir Gel for the Prevention of Herpes Simplex Virus Type 2 Infection. *NEJM*. 2015; 373:530–539. [PubMed: 26244306]
41. Hladik F, Burgener A, Ballweber L, Gottardo R, Vojtech L, Fourati S, et al. Mucosal effects of tenofovir 1% gel. *eLife*. 2015; 4
42. Morrow RA, Friedrich D. Inaccuracy of certain commercial enzyme immunoassays in diagnosing genital infections with herpes simplex virus types 1 or 2. *Am J Clin Pathol.* 2003; 120:839–844. [PubMed: 14671972]
43. Morrow RA, Friedrich D, Meier A, Corey L. Use of "biokit HSV-2 Rapid Assay" to improve the positive predictive value of Focus HerpeSelect HSV-2 ELISA. *BMC Infect Dis.* 2005; 5:84. [PubMed: 16225691]
44. John M, Keller MJ, Fam EH, Cheshenko N, Hogarty K, Kasowitz A, et al. Cervicovaginal secretions contribute to innate resistance to herpes simplex virus infection. *J. Infect. Dis.* 2005; 192:1731–1740. [PubMed: 16235171]
45. Bull M, Lee D, Stucky J, Chiu YL, Rubin A, Horton H, et al. Defining blood processing parameters for optimal detection of cryopreserved antigen-specific responses for HIV vaccine trials. *J Immunol Methods.* 2007; 322:57–69. [PubMed: 17382342]
46. Hosken N, McGowan P, Meier A, Koelle DM, Sleath P, Wagener F, et al. Diversity of the CD8+ T-cell response to herpes simplex virus type 2 proteins among persons with genital herpes. *J. Virol.* 2006; 80:5509–5515. [PubMed: 16699031]
47. Posavad CM, Remington M, Mueller DE, Zhao L, Magaret AS, Wald A, et al. Detailed characterization of T cell responses to herpes simplex virus-2 in immune seronegative persons. *J Immunol.* 2010; 184:3250–3259. [PubMed: 20164419]

48. Jerome KR, Huang ML, Wald A, Selke S, Corey L. Quantitative stability of DNA after extended storage of clinical specimens as determined by real-time PCR. *J Clin Microbiol.* 2002; 40:2609–2611. [PubMed: 12089286]

Author Manuscript

Author Manuscript

Author Manuscript

Author Manuscript

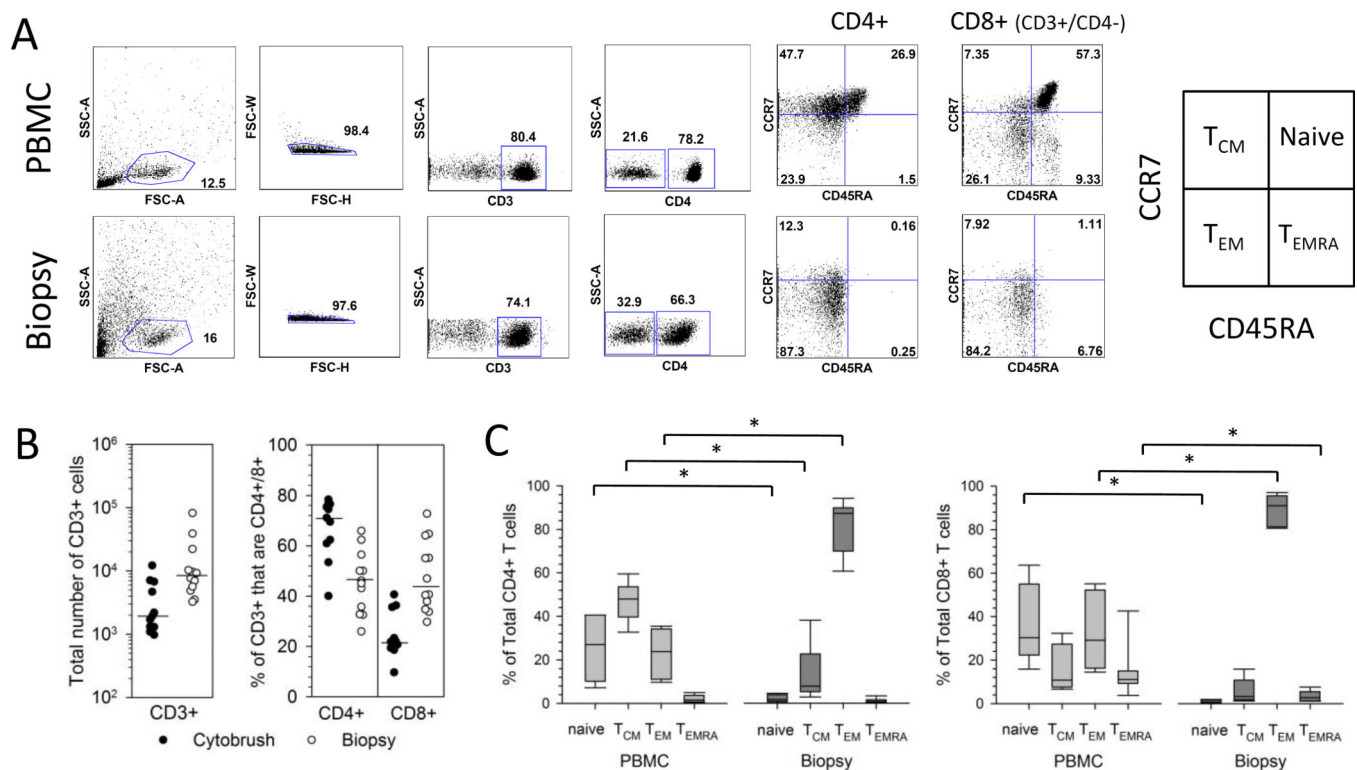


Figure 1. Phenotype of T cells isolated from cervix and PBMC

(A) Representative flow cytometry gating strategy for the enumeration of T cell subsets. Cells isolated from PBMC (top row of graphs) and a cervical biopsy (bottom row of graphs) from a representative participant were gated on lymphocytes, singlets, live cells, CD3⁺ cells, and finally CD4⁺ and CD8⁺ (CD3⁺/CD4⁻) cells. The expression of CCR7 and CD45RA was analyzed on total CD4⁺ and total CD8⁺ (CD3⁺/CD4⁻) cells and gated as quadrants. The box at right labels quadrants (15). (B) Yield and T cell subset composition of CD3⁺ T cells from cervical samples. Cells were isolated from cytobrush (closed circles) or biopsy (open circles) samples and enumerated for the total number of CD3⁺ cells (left graph). The % of the total CD3⁺ cells that are CD4⁺ or CD8⁺ (CD3⁺/CD4⁻) is displayed in the right graph. Medians are presented as bars. (C) Cervix-derived CD4⁺ and CD8⁺ T cells are predominantly T_{EM}. Percentage contribution of each T cell population to the total CD4⁺ (left) or CD8⁺ (right) T cell subset from PBMC or cervical biopsy is displayed from HSV-2-infected participants (n=7). Each box displays the median, 25th and 75th percentiles and error bars display the 10th and 90th percentiles.

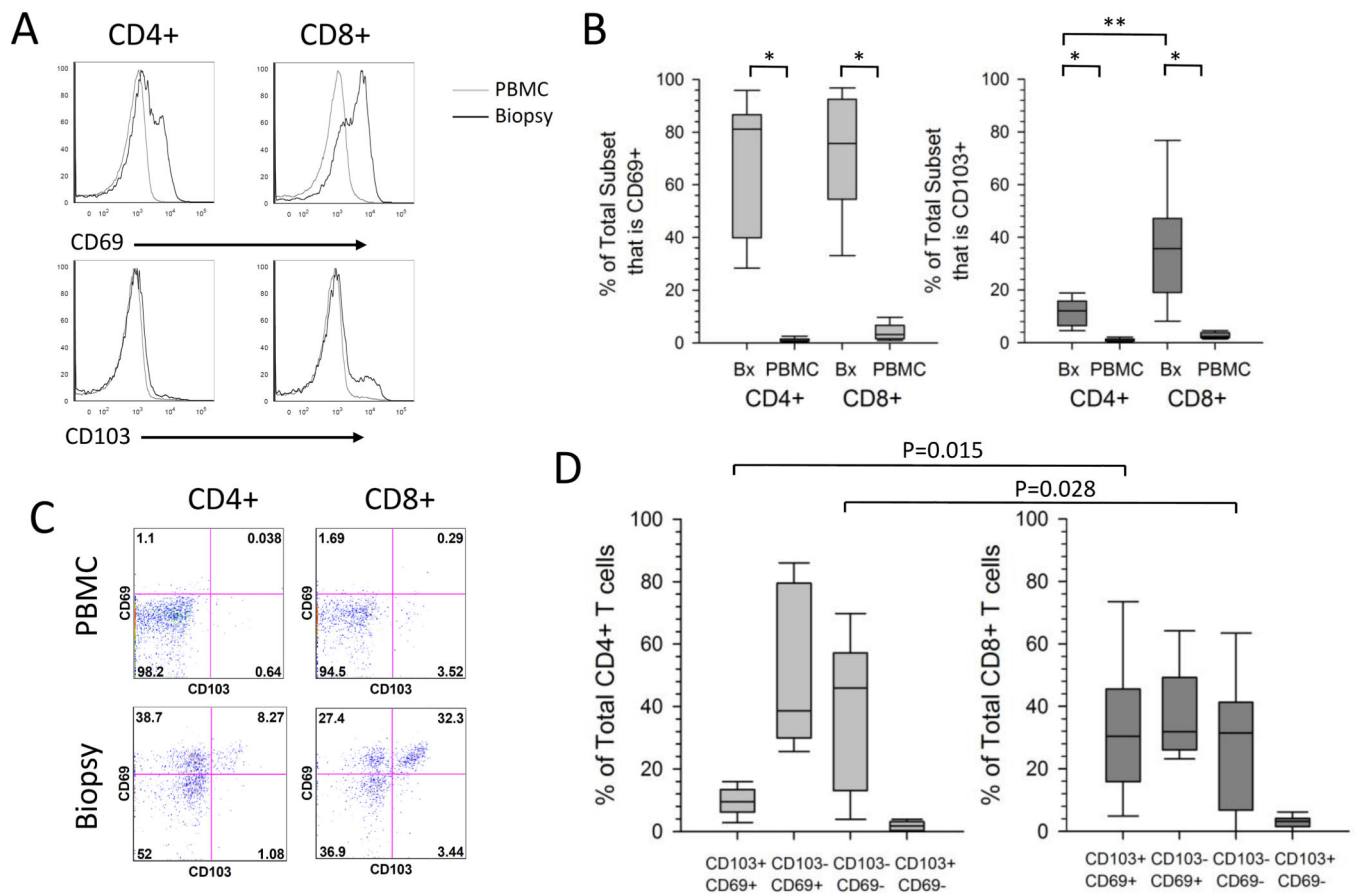


Figure 2. Expression of T_{RM} -associated markers on total T cells isolated from the cervix or PBMC

(A) Representative histograms to measure the expression of CD69 and CD103 on CD4+ and CD8+ T cells. T cells isolated from PBMC (grey line) or cervical biopsy (black line) from a representative participant were analyzed by flow cytometry. (B) Expression of CD69 and CD103 on T cells. The percentage contribution of CD69+ and CD103+ to the total CD4+ or CD8+ T cell subset isolated from PBMC or cervical biopsy from HSV-2 infected participants (n=9) is displayed. Each box displays the median, 25th and 75th percentiles and error bars display the 10th and 90th percentiles from HSV-2 infected participants (n=9). *,P=0.008 ; **, P=0.015). (C) Representative dotplots displaying the co-expression of CD103 and CD69 on PBMC or cervix derived CD4+ and CD8+ T cells from a representative participant. (D) Co-expression of CD69 and CD103 on T cells derived from the cervix. The percentage contribution of each of 4 populations to the total CD4+ or CD8+ T cell subset from cervix-derived T cells from HSV-2 infected participants (n=9) is displayed. Each box displays the median, 25th and 75th percentiles and error bars display the 10th and 90th percentiles.

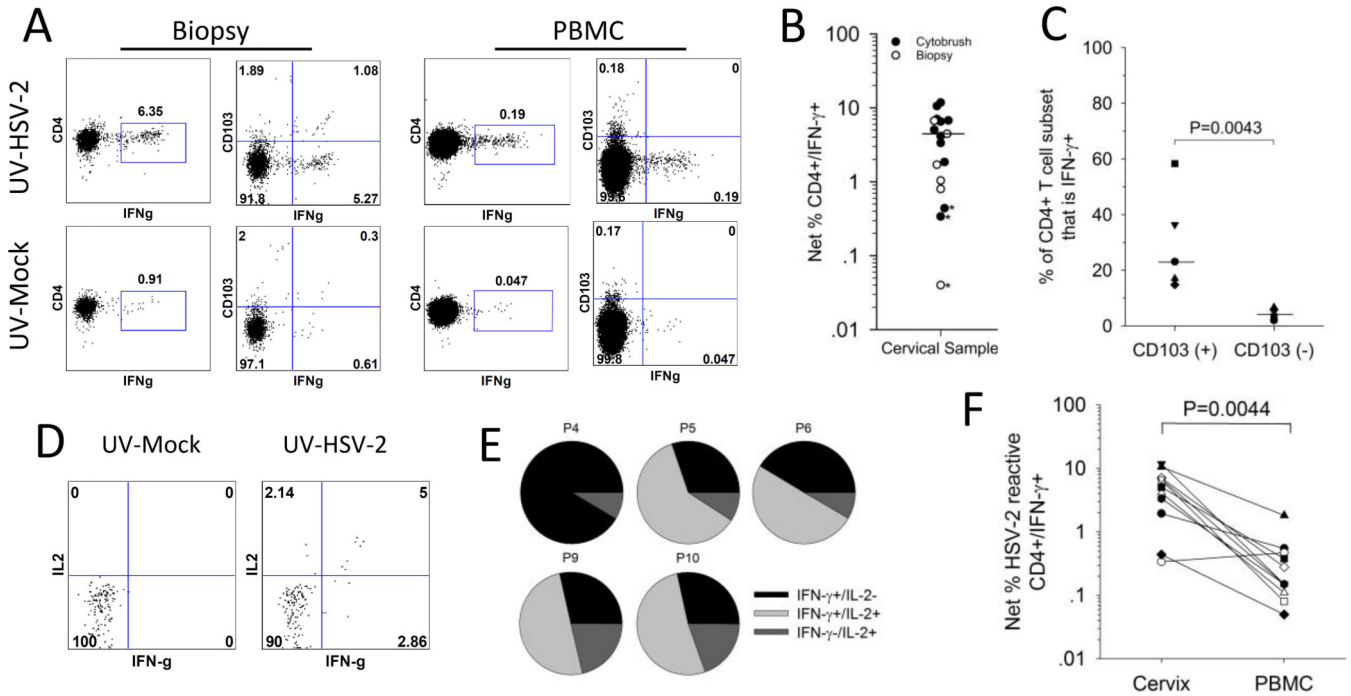


Figure 3. HSV-2 reactive CD4+ T cells are enriched in the CD103+ subset of cervical cells
 Cells isolated from the cervix or blood were co-incubated with UV-mock or UV-HSV-2 antigen and tested *ex vivo* for the expression of cytokines and CD103. (A) Representative dotplots comparing the reactivity of CD103+ and CD103– cells for IFN- γ expression in response to HSV-2 antigen. T cells from a cervical biopsy (left graphs) or PBMC (right graphs) from a representative participant were cultured with UV-mock (bottom graphs) or UV-HSV-2 (top graphs) and the resultant CD4+ T cells were analyzed by ICS and flow cytometry for the expression of IFN- γ and CD103. (B) Net % HSV-2 specific CD4+ T cells (CD4+/IFN- γ +) was measured in cytobrush and biopsy samples; *, proportion of CD4+/IFN- γ + cells stimulated with UV-HSV-2 not statistically significantly different than those stimulated with mock (Fisher’s Exact test $P > 0.05$). Median of all cervical samples where >100 cells analyzed is depicted by the bar. (C) HSV-2 reactive CD4+ T cells are enriched in the CD103(+) subset. The percentage contribution of IFN- γ + (HSV-2 reactive) cells to the total CD103(+) and CD103(-) CD4+ T cell subsets from 5 participants is displayed. Bars represent the medians. (D) Representative dotplots displaying IFN- γ and IL-2 expression on CD4+ T cells derived from a cervical cytobrush sample from a representative participant co-incubated with mock (bottom graph) or UV-HSV-2 (top graph). (E) Co-expression of IFN- γ and IL-2 by HSV-2 reactive CD4+ T cells derived from cervical cytobrushes. The percentage of single and dual cytokine expressing HSV-2 reactive CD4+ T cells relative to the total HSV-2 reactive CD4+ T cell population is displayed. P, participant. (F) HSV-2 reactive CD4+ T cells are more abundant in the cervix compared to the blood. Net % HSV-2 reactive CD4+/IFN- γ + T cells was calculated by ICS/flow cytometry from T cells derived from cervical cytobrushes (cervix) or PBMC.

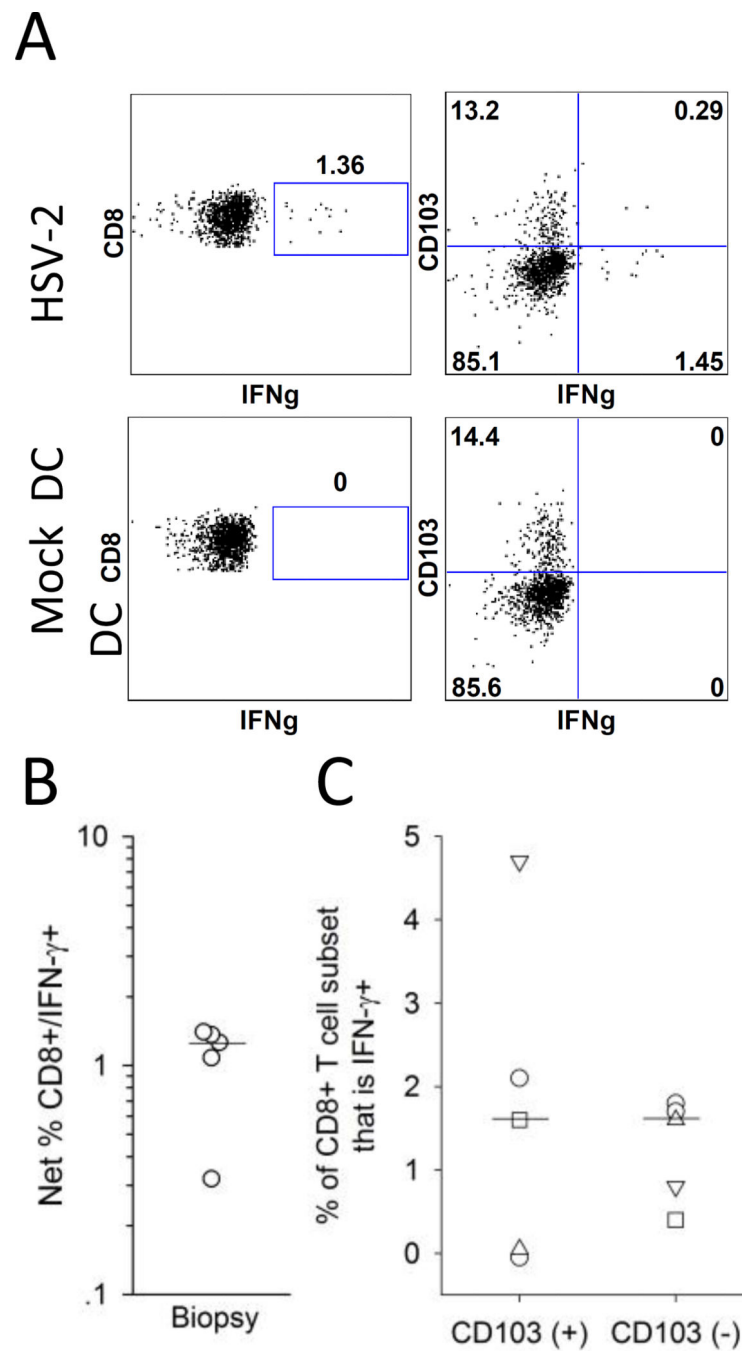


Figure 4. Detection of cervix-derived HSV-2 reactive CD8+ T cells using autologous HSV-2 infected DC

Cells isolated from cervical biopsy samples were co-cultured with autologous mock infected or HSV-2 infected DC and tested *ex vivo* for the expression of IFN- γ and CD103. (A) Representative dotplots for the expression of IFN- γ and CD103 by CD8+ T cells isolated from a cervical biopsy in response to mock DC (bottom graphs) or HSV-2 DC (bottom graphs). T cells were isolated from a cervical biopsy from a representative HSV-2 infected participant and co-cultured with autologous mock DC or HSV-2 DC and the resultant CD8+ T cells were analyzed by ICS and flow cytometry for the expression of IFN- γ and CD103.

(B) Net % HSV-2 reactive CD8+ T cells (CD8+/IFN- γ +) was measured in biopsy samples from 5 HSV-2 infected subjects; the bar depicts the median of all cervical biopsy samples. (C) Expression of CD103 on HSV-2 reactive CD8+ T cells derived from cervical biopsies. The percentage contribution of IFN- γ + (HSV-2 reactive) cells to the total CD103(+) and CD103(-) CD8+ T cell subsets from 5 participants is displayed. Bars represent the medians.

Author Manuscript

Author Manuscript

Author Manuscript

Author Manuscript

TABLE 1

Study Participants and Cervical Samples

ID	Age (yrs) ^a	Time since 1 st episode ^b	HSV serostatus	Race	Cervical Sample (#)	
					Cytobrush	Biopsy
1	51.6	27.8	1-/2+	white	1	1
2	67.7	40.8	1+/2+	white	1	1
3	39.9	11.0	1-/2+	white	1	1
4	50.5	34.3	1-/2+	black	1	0
5	38.8	8.8	1-/2+	white	1	0
6	29.0	8.6	1+/2+	white	1	0
7	23.6	3.1	1-/2+	white	1	1
8	30.8	16.4	1-/2+	white	1	1
9	32.9	3.7	1-/2+	white	1	0
10	22.0	1.5	1-/2+	black	1	0
11	51.0	18.0	1-/2+	white	0	1
12	56.4	5	1+/2+	white	0	1
13	63.5	18.9	1+/2+	white	0	1
14	27.7	3.5	1+/2+	white	0	1
15	45.0	14.0	1+/2+	white	1	1
16	38.3	19.6	1-/2+	white	0	1
17	37.0	1.1	1-/2+	white	0	1
18	26.0	N/A ^c	1-/2-	white	1	0
19	51.0	N/A	1-/2-	white	1	0

^a Age is at time of sampling.^b Time since first episode of symptomatic genital herpes.^c Not applicable.