

# SCIENTIFIC REPORTS



OPEN

## The prognostic biomarker L-homoarginine is a substrate of the cationic amino acid transporters CAT1, CAT2A and CAT2B

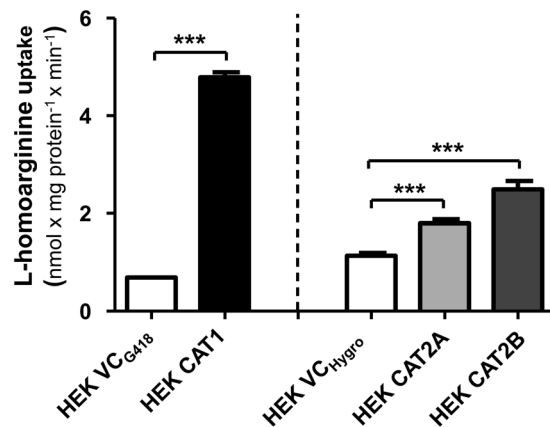
Anja Chafai, Martin F. Fromm, Jörg König & Renke Maas

Low plasma concentration of L-homoarginine is an independent predictor of cardiovascular events and total mortality. Experimental data indicate that supplementation of L-homoarginine may have protective effects. We aimed to elucidate the mechanisms involved in the cellular uptake of L-homoarginine, which are little understood, so far. Using human embryonic kidney (HEK293) cell lines stably overexpressing the human cationic amino acid transporters CAT1 [solute carrier family 7 (SLC7A1)], CAT2A (SLC7A2A) or CAT2B (SLC7A2B) we assessed the transport kinetics of L-homoarginine and interactions with the CAT substrates L-arginine and asymmetric dimethylarginine (ADMA). Significant uptake of L-homoarginine was observed for all three CATs with apparent  $K_M$ -values of  $175 \pm 7 \mu\text{M}$  for CAT1 and  $523 \pm 35 \mu\text{M}$  for CAT2B. Saturation of CAT2A-mediated L-homoarginine uptake could not be reached. Uptake of L-homoarginine by any of the three CATs could be inhibited by L-arginine and ADMA. Significant inhibition of CAT1-mediated uptake of L-homoarginine by L-arginine already occurred in the physiological concentration range. Taken together these data demonstrate that L-homoarginine is a substrate of CAT1, CAT2A and CAT2B and that CAT1 is a key site with regard to physiological relevance and interactions with related substrates such as L-arginine.

Prospective clinical studies across different populations have characterized L-homoarginine as an independent protective biomarker<sup>1</sup>. The higher its plasma concentration the lower the cardiovascular event rate and total mortality<sup>2–5</sup>. This inverse association with risk sets L-homoarginine apart from numerous other risk markers, which usually show an increase in risk with increasing plasma concentrations. A high urinary excretion of L-homoarginine is associated with lower all-cause mortality in renal transplant recipients<sup>6</sup>. Moreover, plasma L-homoarginine tends to be lower in renal failure<sup>2,4</sup> much in contrast to structurally related biomarkers such as asymmetric dimethylarginine (ADMA), which typically increases in renal failure<sup>7</sup>. In animal experiments supplementation of L-homoarginine showed protective effects such as improved neurological outcome after experimental stroke, indicating that L-homoarginine may be a protective factor rather than a protective marker<sup>8–10</sup>. Among others, L-homoarginine is a substrate of nitric oxide synthases<sup>11,12</sup> and arginases<sup>13</sup>. In both cases, it has a lower affinity to these enzymes than L-arginine, which may turn it into an effective inhibitor in the presence of L-arginine. Therefore, interactions with the L-arginine-NO pathway have been considered as a possible mechanism to explain its clinical effects<sup>2,8</sup>. But L-homoarginine may also affect L-arginine independent functions as it is known to inhibit the alkaline phosphatase(s)<sup>14</sup> and the  $\text{Na}^+/\text{K}^+$ -ATPase<sup>15</sup>. Irrespective of prevailing uncertainties regarding the precise mechanisms mediating its putative beneficial effects, supplementation of L-homoarginine has already become the target of first clinical investigations<sup>16</sup>.

L-Homoarginine is formed endogenously and may also be ingested as part of the diet<sup>17</sup>. While major pathways and enzymes involved in its synthesis, metabolism and excretion have been identified<sup>8,11,18</sup> the precise mechanisms underlying its distribution in the body and its uptake by cells remain only partly understood. Cationic

Chair of Clinical Pharmacology and Clinical Toxicology, Institute of Experimental and Clinical Pharmacology and Toxicology, Friedrich-Alexander-Universität Erlangen-Nürnberg, Erlangen, Germany. Correspondence and requests for materials should be addressed to R.M. (email: [renke.maas@fau.de](mailto:renke.maas@fau.de))



**Figure 1.** Uptake of L-homoarginine (100  $\mu\text{mol/l}$ ) by HEK cells overexpressing CAT1 (HEK CAT1), CAT2A (HEK CAT2A), CAT2B (HEK CAT2B) and by the respective control cells (HEK VC<sub>G418</sub> or HEK VC<sub>Hygro</sub>). Each data point is  $n = 6$ , mean  $\pm$  SEM. \*\*\* $p < 0.001$ .

amino acids such as L-homoarginine largely depend on transport proteins to cross cellular membranes<sup>19</sup>. In early experiments it has been recognized that L-homoarginine competes with the cellular uptake of L-arginine mediated by the so called  $\gamma^+$ -system<sup>20–22</sup>. This makes the cationic amino acid transporters of the CAT family (i.e. solute carrier 7 family – *SLC7*), which account for the transport activity of the  $\gamma^+$ -system, primary targets for further investigations. For CAT1 (*SLC7A1*), CAT2A (*SLC7A2A*) and CAT2B (*SLC7A2B*) direct evidence for transport of L-arginine and methylarginines is available<sup>19, 23, 24</sup>, which makes them promising candidates for the investigation of L-homoarginine transport. The CATs differ in their tissue distribution<sup>19</sup>. CAT1 is widely expressed in the body, with the exception of the liver. In contrast, CAT2A is predominantly expressed in the liver, while CAT2B expression appears to be functionally relevant in immune cells. In the brain immunostaining for CAT1, CAT2 and CAT3 has been observed<sup>25</sup>.

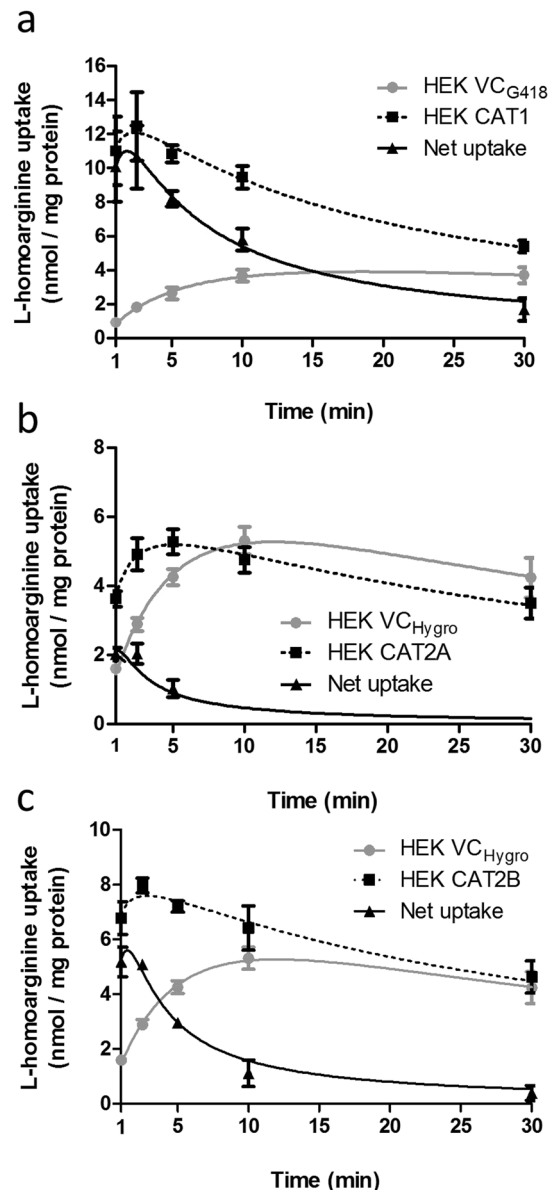
So far, data regarding putative transport of L-homoarginine by the  $\gamma^+$ -system/CATs are mostly based on assays in native cells representing the net effect of multiple related transport systems and/or on indirect evidence such as using L-homoarginine as an inhibitor or unlabeled substrate for trans-stimulation (i.e. exchange)<sup>20, 22, 26</sup>. In order to correctly interpret physiological effects of L-homoarginine and to gauge possible side effects of L-homoarginine supplementation it is of considerable interest to identify transport proteins involved in the cellular uptake of L-homoarginine and to know whether L-homoarginine is likely to interact with the transport of related substrates such as L-arginine or ADMA. Therefore, it was the aim of the present study to assess transport mechanisms involved in the cellular uptake of L-homoarginine focusing on the cationic amino acid transporters CAT1, CAT2A and CAT2B. Furthermore, possible interactions of CAT-mediated L-homoarginine uptake with known CAT substrates were investigated. Cellular uptake was studied in human embryonic kidney derived cell lines (HEK293) stably overexpressing CAT1, CAT2A or CAT2B. In previous studies we found the HEK cell lines well suited to study the CAT1-, CAT2A- or CAT2B-mediated cellular uptake of substrates related to homoarginine (such as L-arginine and ADMA)<sup>23, 24</sup>. In addition, using the same cell lines for L-homoarginine makes it easier to compare the present data for L-homoarginine to data published for L-arginine and ADMA.

## Results

**CAT1-, CAT2A- and CAT2B-mediated uptake of L-homoarginine.** In experiments using L-homoarginine (100  $\mu\text{mol/l}$ ) as substrate, cellular uptake was significantly higher in HEK cells overexpressing CAT1 (7-fold), CAT2A (1.6-fold) or CAT2B (2.2-fold), respectively, as compared to the uptake into control cells ( $p < 0.001$  vs. HEK VC<sub>G418</sub> or HEK VC<sub>Hygro</sub>, Fig. 1). Next, time dependence of L-homoarginine uptake was assessed. As shown in Fig. 2 uptake of L-homoarginine was higher in CAT1-, CAT2A- or CAT2B-expressing cells than in the respective control cells over periods of 30 min, 5 min, and 30 min, respectively. For all cell lines linearity of uptake was observed up to 2.5 min, which was chosen as incubation period for subsequent experiments. The CAT1-, CAT2A- or CAT2B-mediated net uptake was used to calculate  $K_M$ - and  $V_{max}$ - values (Fig. 3). The apparent  $V_{max}$ -values for CAT1 and CAT2B-mediated uptake of L-homoarginine were  $12 \pm 0.1$ , and  $11 \pm 0.2$   $\text{nmol} \times \text{mg protein}^{-1} \times \text{min}^{-1}$ , respectively. The corresponding  $K_M$ -values for CAT1 and CAT2B, were  $175 \pm 7$   $\mu\text{mol/l}$  and  $523 \pm 35$   $\mu\text{mol/l}$ , respectively. The  $V_{max}$ -value for CAT2A could only be estimated to be  $>20$   $\text{nmol} \times \text{mg protein}^{-1} \times \text{min}^{-1}$  due to the technical limit imposed by the maximally attainable L-homoarginine concentration.

## Inhibition of CAT1-, CAT2A- and CAT2B-mediated L-homoarginine uptake by L-arginine and ADMA.

We investigated the inhibition of CAT1-, CAT2A- and CAT2B-mediated uptake of L-homoarginine (100  $\mu\text{mol/l}$ ) by L-arginine and ADMA, which both are established and structurally related substrates of these transporters (Fig. 4). CAT1-mediated uptake of L-homoarginine was inhibited by increasing concentrations of L-arginine and ADMA with  $\text{IC}_{50}$ -values of 259  $\mu\text{mol/l}$  (95% CI: 215–312  $\mu\text{mol/l}$ ) and 379  $\mu\text{mol/l}$  (95% CI: 299–481  $\mu\text{mol/l}$ ), respectively (Fig. 4a,b). CAT2A-mediated transport of L-homoarginine could only be inhibited by very high (10000  $\mu\text{mol/l}$ ) concentrations of L-arginine and ADMA which precluded the calculation of  $\text{IC}_{50}$ -values (Fig. 4c,d). For inhibition of CAT2B-mediated uptake of L-homoarginine the  $\text{IC}_{50}$ -values were 1437



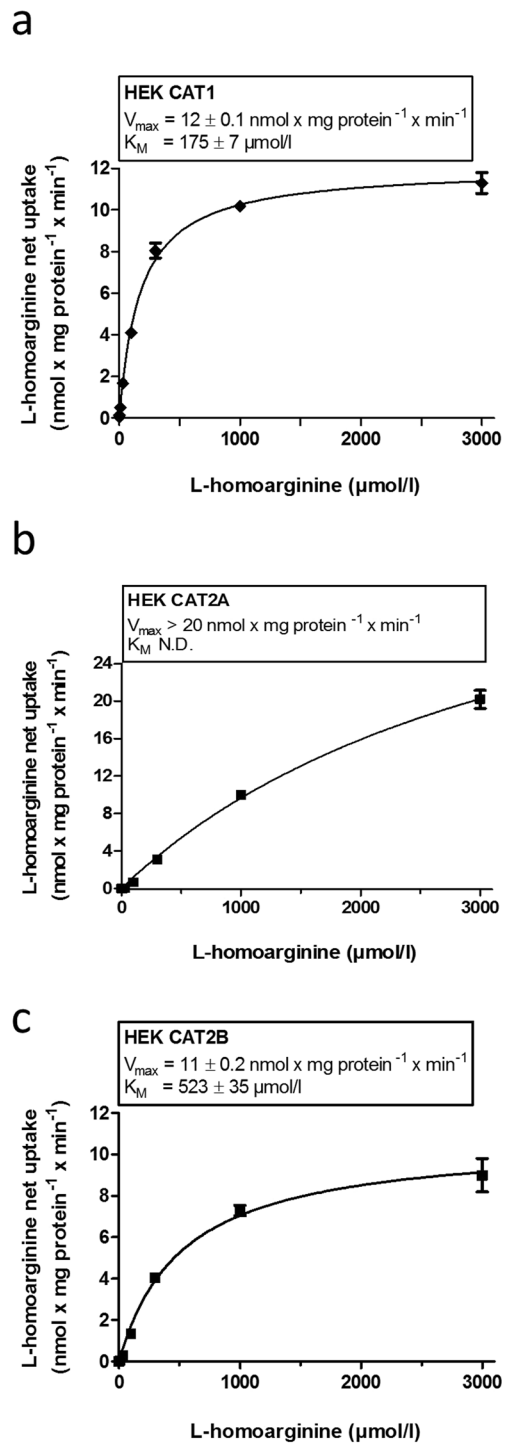
**Figure 2.** Time-dependent uptake of L-homoarginine in HEK cells overexpressing CAT1 (a), CAT2A (b) or CAT2B (c). Cells were incubated for 1, 2.5, 5, 10, and 30 min at 37 °C with 100  $\mu$ M L-homoarginine. Each data point is  $n = 6$ . \*\*\* $p < 0.001$  as compared to suitable cells (HEK VC<sub>G418</sub> or HEK VC<sub>Hygro</sub>) containing only an empty vector.

$\mu$ mol/l (95% CI: 796–2593  $\mu$ mol/l) and 608  $\mu$ mol/l (95% CI: 381–961  $\mu$ mol/l) for L-arginine and ADMA, respectively (Fig. 4e,f).

As the  $IC_{50}$ -value of CAT1-mediated L-homoarginine uptake by L-arginine was close to the physiological concentration range of L-arginine (ranging from a mean of 77  $\mu$ mol/l in fasting individuals<sup>27</sup> to up to 115  $\mu$ mol/l post prandial<sup>28</sup>) we assessed the effect of L-arginine (50 and 100  $\mu$ mol/l) on CAT1-mediated uptake of L-homoarginine (2  $\mu$ mol/l) in the physiological concentration range of both substances (Fig. 5). CAT1-mediated net uptake of L-homoarginine was significantly inhibited by 100  $\mu$ mol/l L-arginine ( $p < 0.01$ ).

#### L-Homoarginine as inhibitor of CAT1-, CAT2A- and CAT2B-mediated L-arginine and ADMA uptake.

As substrate of CAT1, CAT2A and CAT2B L-homoarginine may also inhibit the uptake of other CAT substrates. We therefore assessed the inhibition of CAT1-, CAT2A- and CAT2B-mediated L-arginine or ADMA uptake (Fig. 6). CAT1-mediated uptake of L-arginine and ADMA was inhibited by increasing L-homoarginine concentrations with  $IC_{50}$ -values of 1320  $\mu$ mol/l (95% CI: 1029–1693  $\mu$ mol/l) and 642  $\mu$ mol/l (95% CI: 487–846  $\mu$ mol/l), respectively (Fig. 6a,b).  $IC_{50}$ -values for inhibition of CAT2A-mediated uptake of L-arginine and ADMA were 3265  $\mu$ mol/l (95% CI: 3378–3650  $\mu$ mol/l) and 9244  $\mu$ mol/l (95% CI: 2636–32416  $\mu$ mol/l), respectively (Fig. 6c,d), while  $IC_{50}$ -values for inhibition of CAT2B-mediated uptake of L-arginine and ADMA by

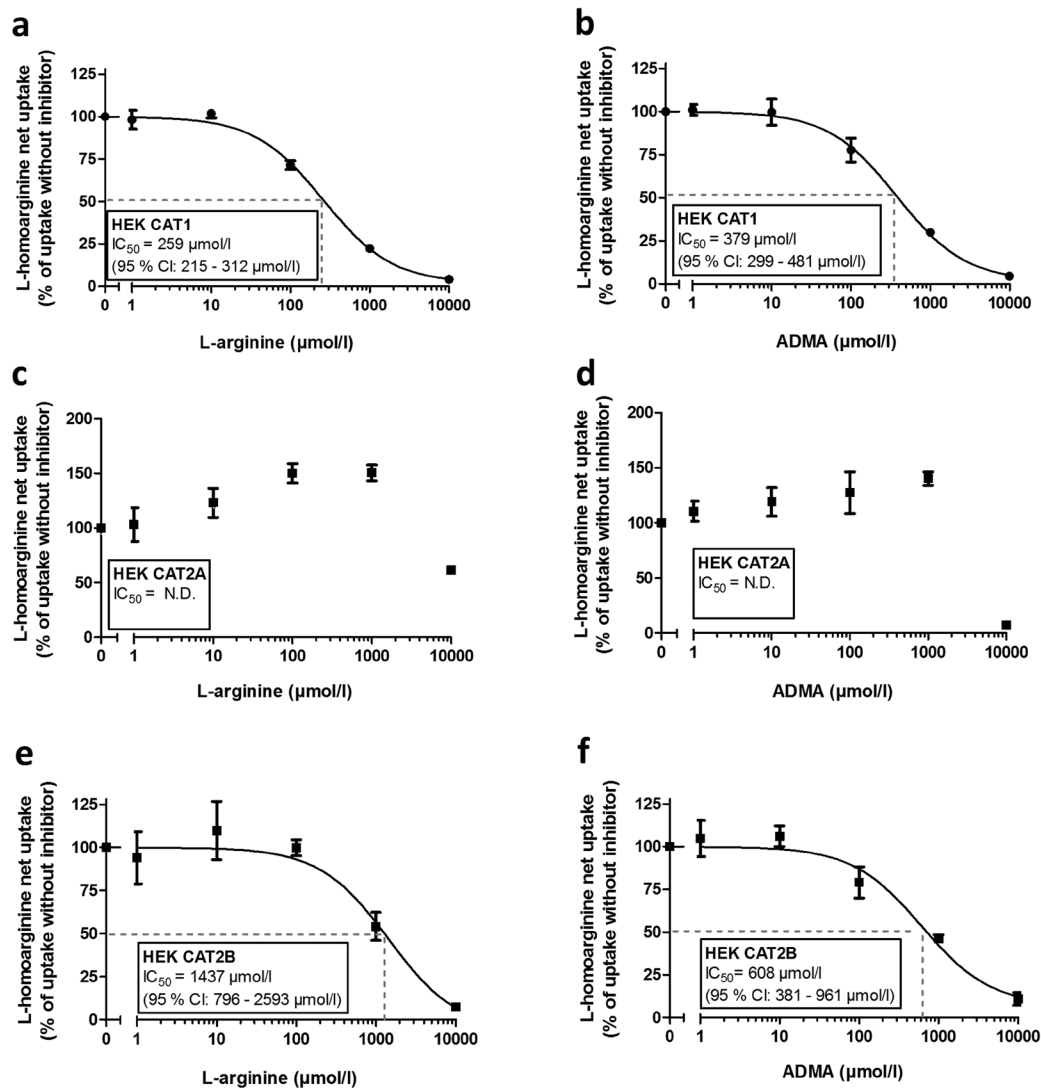


**Figure 3.** CAT1- (a), CAT2A - (b) or CAT2B-mediated (c) uptake of L-homoarginine dependent of the L-homoarginine concentration. Each data point is  $n = 6$ .

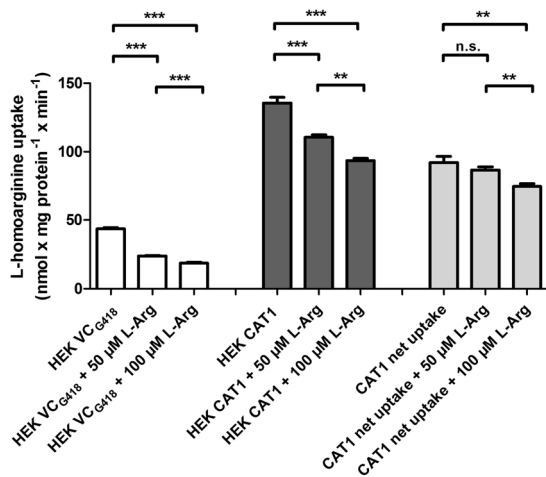
L-homoarginine were lower with 1215  $\mu\text{mol/l}$  (95% CI: 959–1539  $\mu\text{mol/l}$ ) and 1860  $\mu\text{mol/l}$  (95% CI: 797–4344  $\mu\text{mol/l}$ ), respectively (Fig. 6e,f).

## Discussion

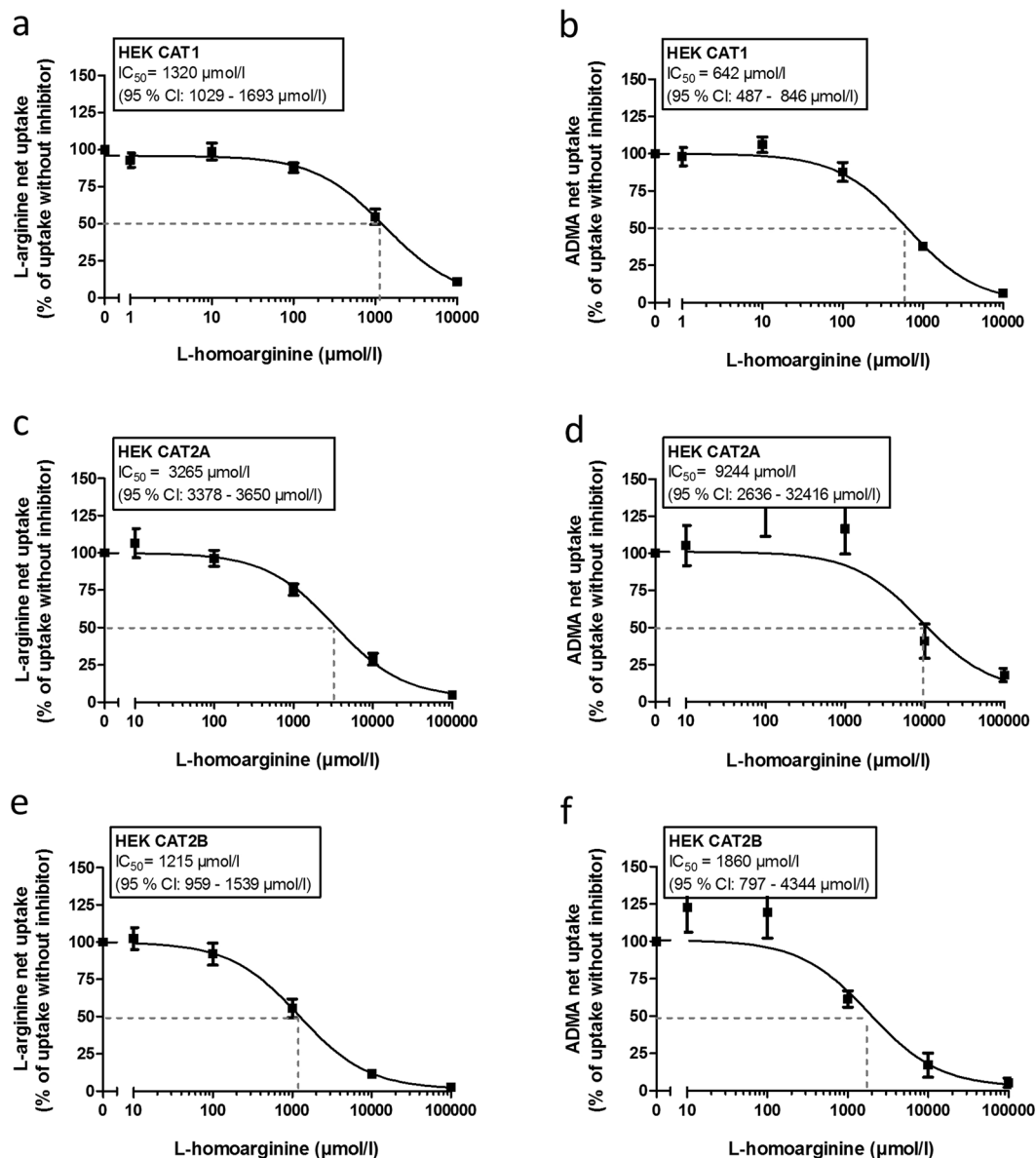
It was the aim of the present study to characterize the cellular uptake of the protective biomarker L-homoarginine by CATs and to assess the potential relevance of interactions with related endogenous CAT substrates. Transport kinetics were assessed using HEK293 cells stably overexpressing human CAT1, CAT2A and CAT2B. Our principal new findings are:



**Figure 4.** Inhibition of CAT1-, CAT2A-, CAT2B-mediated L-homoarginine (100 μmol/l) uptake by increasing concentrations of L-arginine (a,c,e) and ADMA (b,d,f). Each data point is n = 6.



**Figure 5.** Inhibition of L-homoarginine uptake by HEK CAT1 cells and respective control cells (HEK VC<sub>G418</sub>) and resulting CAT1-mediated net uptake without and with co-administration of L-arginine in physiological concentrations. Each data point is n = 6, mean ± SEM, \*\*\*p < 0.001, \*\*p < 0.01.



**Figure 6.** Inhibition of CAT1-, CAT2A-, CAT2B-mediated L-arginine (a,c,e) and ADMA (b,d,f) uptake by increasing concentrations of L-homoarginine. Each data point is n = 6.

1. L-Homoarginine is a substrate of the human cationic amino acid transporters CAT1, CAT2A and CAT2B.
2. CAT1-, CAT2A- and CAT2B-mediated uptake of L-homoarginine can be inhibited by L-arginine and ADMA, but only inhibition of CAT1-mediated uptake of L-homoarginine is likely to be functionally relevant under physiological conditions.
3. CAT1-, CAT2A- and CAT2B-mediated uptake of L-arginine and ADMA can be inhibited by L-homoarginine, but this is unlikely to be clinically relevant in the physiological concentration range.

**CAT1-, CAT2A- and CAT2B-mediated uptake of L-homoarginine.** Considering the observed low  $K_M$ -values and the known broad tissue distribution<sup>19</sup> CAT1 likely is the most relevant of the three CATs with regard to translocation through cell membranes and the biological effects of L-homoarginine. Relevant CAT1-mediated uptake of L-homoarginine was already observed at concentrations (2 μmol/l) in the (patho-) physiological concentration range of L-homoarginine (ranging from 1.5 to 2.4 μmol/l in healthy volunteers<sup>29</sup> to up to 4.7 μmol/l in women with preeclampsia<sup>30</sup>), which is still below the apparent  $K_M$ -value of 175 μmol/l of CAT1-mediated L-homoarginine transport.

With respect to possible side effects of clinical arginine supplementation it is of interest to note that in previous studies the L-homoarginine concentration required to attenuate L-arginine-dependent NO synthesis<sup>22,31</sup> was several orders of magnitude above the IC<sub>50</sub>-values we observed for inhibition of CAT1- or CAT2B-mediated uptake

of L-arginine by L-homoarginine. Moreover, the  $IC_{50}$ -values are far above the physiological plasma concentration of L-homoarginine<sup>5,16</sup>. All this makes a significant interference of oral L-homoarginine supplementation with cellular uptake of L-arginine and NOS synthesis unlikely. In animals orally supplemented L-homoarginine is readily absorbed in the small intestine and largely excreted unmetabolized<sup>32</sup>. Oral supplementation of L-homoarginine in humans leads to a significant and quite persistent rise in plasma L-homoarginine<sup>16</sup> indicating rather limited metabolism. This low rate of systemic metabolism still awaits explanation as several enzymes including NOS, arginase and alanine-glyoxylate aminotransferase 2 (AGXT2) are capable of metabolizing L-homoarginine<sup>11–13,18</sup>. The simplest explanation is that between absorption and renal elimination only a small fraction of L-homoarginine is taken up by metabolizing tissues such as the liver. Our data which indicate a low affinity, high capacity transport of L-homoarginine by CAT2A are in line with this. We found CAT2A-mediated uptake of L-homoarginine to be detectable even at physiological L-homoarginine concentrations that are several orders of magnitude below its presumed  $K_M$ -values. Uptake at these concentrations was quantitatively limited, however. Similar observations have been made for CAT2A-mediated transport of L-arginine<sup>24</sup>. Moreover, the pharmacokinetics of L-homoarginine in supplementation studies, with a large proportion of the ingested L-homoarginine being excreted unmetabolized, indicate that overall uptake of L-homoarginine into the liver may be limited and/or saturable. The expression pattern of CAT2 and functional considerations may explain this observation: In humans the liver is a key site of CAT2A expression, it is also an organ with a high enzymatic capacity for L-arginine and L-homoarginine metabolism<sup>33</sup>. High affinity uptake at low concentration by the liver and subsequent metabolism would lead to a functionally relevant depletion of plasma from L-arginine or L-homoarginine which hardly could be compensated by dietary intake.

**Interactions of CAT-mediated uptake of L-homoarginine, L-arginine and ADMA.** While L-homoarginine has already been used for over 35 years as a competitive inhibitor of the  $\gamma^+$ -mediated transport of cationic amino acids<sup>20</sup>, its interaction with individual components of this system (i.e. CAT1, CAT2A and CAT2B) still remained to be elucidated. The present study indicates that the high concentrations of L-homoarginine (1–10 mM) typically used in these studies<sup>20–22,31</sup> can indeed inhibit CAT-mediated transport of substrates, such as L-arginine. In a previous study it was noted that despite being a NO substrate, L-homoarginine in high doses actually inhibited NO synthesis in perfused rat kidneys<sup>31</sup>. Based on the observed effects of siRNA-mediated knock-down of CAT1 expression the observation was attributed to inhibition of CAT1-mediated L-arginine uptake resulting in cellular depletion of the superior NOS substrate L-arginine. This interpretation is supported by the present data. In light of the controversial discussion regarding the risks and benefits associated with L-arginine supplementation<sup>34,35</sup>, it will be of interest to further investigate the clinical relevance of this interaction by studying samples available from L-arginine supplementation studies. In this respect possible interactions at the intracellular (i.e. mitochondrial) transport level involving *SLC25A29* (encoding ORNT3) will have to be considered as well<sup>36</sup>.

With respect to biological effects of L-homoarginine it was also of interest to investigate a possible interference of L-homoarginine with the CAT1-, CAT2A- or CAT2B-mediated uptake of related substances such as L-arginine and ADMA. The present *in vitro* findings indicate that *in vivo* CAT1-, CAT2A- or CAT2B-mediated transport of L-arginine or ADMA is unlikely to be affected in a clinically significant manner by physiological concentrations of L-homoarginine. This observation is consistent with very recent observations in a clinical study in which no effect of L-homoarginine on the plasma concentrations of L-arginine and ADMA and on vascular function was observed when mean plasma concentrations of healthy volunteers were augmented from 2.9 to 17.3  $\mu\text{mol/l}$ <sup>16</sup>.

However, in line with previous observations concerning the CAT substrate ADMA<sup>23,24</sup> our data show that physiological concentrations of L-arginine may affect the CAT1-, CAT2A- or CAT2B-mediated transport of L-homoarginine. Based on this observation one would expect, in principle, that supplementation of L-arginine leads to increased plasma L-homoarginine concentrations and lowers intracellular L-homoarginine. But similar to the previously reported effects of L-arginine on the cellular uptake of ADMA, the consequences of L-arginine supplementation on plasma L-homoarginine can be expected to be modest. The  $IC_{50}$ -value for inhibition of CAT1-mediated L-homoarginine uptake by L-arginine is 259  $\mu\text{M}$ , which is only approached by specific dietary supplementations<sup>37,38</sup>. However, we already previously noted that *in vivo* CAT1 is simultaneously confronted with several chemically similar substrates competing for transport (including ADMA, monomethylarginine, L-arginine, L-lysine, L-histidine - and now L-homoarginine) which may give each substrate more apparent leverage at lower concentrations<sup>23</sup>.

The primary focus of the present study was CAT-mediated cellular uptake of L-homoarginine and the experiments were designed accordingly. Based on the data from the literature for related substrates and on our own preliminary data indicating a high transport capacity, concentrations above the physiological concentration range were required to determine some of the  $K_M$ -,  $V_{\text{max}}$ - and  $IC_{50}$ - values for homoarginine and ADMA. In addition, assays performed at higher concentrations are less sensitive to metabolism and interference by endogenous compounds. Furthermore, considering the short incubation time used in the present experiments, the extent and impact of metabolism on the observed transport kinetics can be considered marginal.

In the literature  $K_M$ -values for the uptake of L-homoarginine by cells or tissues, rather than for individual transport proteins, can be found. These range from 40  $\mu\text{mol/l}$  in fibroblasts<sup>20</sup> up to 300  $\mu\text{mol/l}$  in rat hepatocytes<sup>39</sup>. The  $IC_{50}$ -values reported in the literature for inhibition of  $\gamma^+$ -system-mediated uptake of L-arginine by L-homoarginine range between 19  $\mu\text{mol/l}$  and 240  $\mu\text{mol/l}$ , respectively<sup>20,21</sup>. This is much lower than the  $IC_{50}$ -value of 1320  $\mu\text{mol/l}$  we observed for the inhibition of CAT1-mediated uptake of L-arginine by L-homoarginine. The differences between data obtained for cell types and the values we obtained for individual transport proteins highlight the need to dissect the individual components of transport systems and to look beyond CATs for  $\gamma^+$ -like transport of L-homoarginine and arginine.

Alternative candidates for transport of L-homoarginine are plentiful. Transporters capable of transporting L-arginine or ADMA may serve as a good starting point in this respect. Experimental and clinical data show that the  $\gamma^+$ LAT system is involved in the cellular extrusion of L-arginine and ADMA<sup>40</sup>. A similar role of the  $\gamma^+$ LAT system in extrusion of L-homoarginine can be presumed but remains to be formally proven. In addition, the multidrug and toxin extrusion protein 1 (MATE1, *SLC47A1*) and the organic cation transporter 2 (OCT2, *SLC22A2*) can be considered as candidates for the cellular uptake of L-homoarginine<sup>24</sup>.

In principle, genomewide association studies (GWAS) may help to identify transport proteins relevant in the homeostasis of plasma L-homoarginine. However, no decisive evidence indicating the association of plasma L-homoarginine with specific transport proteins has emerged in these studies, so far<sup>8,41</sup>. GWAS data available for L-arginine and ADMA point, with respect to transport, into the same direction<sup>42</sup>. These findings are compatible with several constellations which are not mutually exclusive:

1. Redundant transport systems render the contribution of an individual transport protein too small to emerge as significant in GWAS analyses.
2. Transport functionality for L-homoarginine or a related co-substrate is vital, which keeps the frequency of functionally relevant genetic variations below the limit of detection in GWAS analyses.
3. For key transport proteins involved in the transport of L-homoarginine there are no frequent and functionally relevant SNPs to be found in the general population.

## Conclusion

The present study identifies L-homoarginine as substrate of CAT1, CAT2A and CAT2B. Especially uptake by CAT1 and interactions with the uptake of L-arginine are likely to be of (patho-) physiological relevance.

## Material and Methods

**Chemicals.** [<sup>3</sup>H]-L-Homoarginine (6 Ci/mmol, >99% radiochemical purity, generally labeled, <sup>3</sup>H[G]) was obtained from ViTrax Co (CA, USA), [<sup>3</sup>H]-ADMA (25 Ci/mmol, >97% radiochemical purity, <sup>3</sup>H[G] labeled by catalytic tritium gas exchange) was from BIOTREND Chemikalien GmbH (Cologne, Germany) and [2,3,4,5-<sup>3</sup>H]-labeled L-arginine (43 Ci/mmol, >99% radiochemical purity) was from American Radiolabeled Chemicals Inc. (St. Louis, MO, USA). Stock solutions of [<sup>3</sup>H]-labeled L-homoarginine, ADMA and L-arginine in water contained 20%, 50% and 2% ethanol, respectively. Unlabeled L-arginine and ADMA were from Enzo Life Sciences GmbH (Lörrach, Germany). Sodiumbutyrate was obtained from Merck KGaA (Darmstadt, Germany). Poly-D-lysine hydrobromide (research grade, molecular weight 70,000–150,000) and unlabeled L-homoarginine were purchased from Sigma-Aldrich Chemie GmbH (Taufkirchen, Germany). Unless stated otherwise purity of unlabeled compounds was at least  $\geq 97\%$ .

**Cell culture.** Cell lines and basic cell culture conditions have previously been described<sup>23,24</sup>. The original choice of human embryonic kidney cells (HEK293) cells for transfection with CAT1-, CAT2A- or CAT2B- was based on their reliable growth and well established propensity for transfection and cellular uptake experiments. In brief, uptake assays were performed using [<sup>3</sup>H]-labeled substrate and human embryonic kidney (HEK293) cells stably overexpressing the empty vector only (HEK VC<sub>G418</sub> and HEK VC<sub>hygro</sub>, depending on selection conditions) or human CAT1 (HEK CAT1, gene: *SLC7A1*, NM\_003045.4), CAT2A (HEK CAT2A, gene: *SLC7A2A*, NM\_003046.5) or CAT2B (HEK CAT2B, *SLC7A2B*, NM\_001008539.3). The cells were cultured in minimal essential medium containing 10% heat-inactivated fetal bovine serum, 100 U/l penicillin, 100  $\mu$ g/ml streptomycin, and either G418 (800  $\mu$ g/ml) or hygromycin B (260  $\mu$ g/ml) at 37 °C and 5% CO<sub>2</sub> with subculture as required. Trypsin (0.05%)-EDTA (0.02%) solution was used to detach cells. All cell culture media supplements were obtained from Invitrogen GmbH (Karlsruhe, Germany).

**Uptake transport assays.** The transport assays were performed as previously described with minor modifications<sup>23,24</sup>. Cells were seeded into poly-D-lysine-coated 12-well plates. Sodium butyrate (10 mmol/l) was added after 24 h of culture for 24 h to enhance CAT1, CAT2A or CAT2B protein expression. For the uptake experiments cells were washed with prewarmed (37 °C) transport buffer (142 mmol/l NaCl, 5 mmol/l KCl, 1 mmol/l K<sub>2</sub>HPO<sub>4</sub>, 1.2 mmol/l MgSO<sub>4</sub>, 1.5 mmol/l CaCl<sub>2</sub>, 5 mmol/l glucose, and 12.5 mmol/l HEPES, pH 7.3) and incubated with a mixture of radiolabeled and non-radiolabeled L-homoarginine, L-arginine or ADMA in transport buffer at 37 °C. In order to identify the period of linear L-homoarginine uptake time dependence was assessed. Cells were incubated with the transport buffer containing 100  $\mu$ mol/L L-homoarginine at 37 °C for 1, 2.5, 5, 10 and 30 min. For determination of kinetic parameters of CAT-mediated L-homoarginine transport increasing L-homoarginine concentrations and an incubation time of 2.5 min were used.

To analyze inhibition of CAT-mediated uptake of L-homoarginine by L-arginine or ADMA as well as CAT-mediated uptake of L-arginine and ADMA by L-homoarginine, cells were co-incubated with different concentrations of the potential inhibitors. For the uptake of L-homoarginine (100  $\mu$ mol/l) inhibitor concentrations from 1–10000  $\mu$ mol/l of L-arginine and ADMA were used. For the inhibition of the uptake of ADMA (100  $\mu$ mol/l) or L-arginine (1000  $\mu$ mol/l) L-homoarginine concentrations from 1–100000  $\mu$ mol/l were used. To analyze inhibition of CAT1-mediated uptake of L-homoarginine at physiological concentrations, a substrate concentration of 2  $\mu$ mol/l and an inhibitor concentration of up to 100  $\mu$ mol/l for L-arginine was used. After cooling to 0 °C the cells were washed three times with ice-cold transport buffer and lysed with 0.2% SDS. The intracellular accumulation of radioactivity was determined by liquid scintillation counting (TriCarb 2800; PerkinElmer Life and Analytical Sciences, Inc.) after adding 4 ml of scintillation solution (Ultima Gold XR; PerkinElmer Life and Analytical Sciences, Inc., Rodgau-Jügesheim, Germany). A bicinchoninic acid assay was used to assess the protein



concentrations. Data from at least two single experiments each performed in triplicate ( $n \geq 2 \times 3$ ) on different days were combined.

**Statistical analysis.** Statistical analysis was performed using GraphPad Prism 5 (version 5.01, 2007, GraphPad Software, San Diego, CA, USA). Net transport data were calculated as the difference of uptake from cells transfected with the respective CAT transporter and the corresponding empty control vector. Therefore, the maximum transport velocity ( $V_{\max}$ ) values have to be interpreted as “apparent” values.  $K_M$ -values for the uptake transport were calculated using Michaelis–Menten enzyme kinetics. The corresponding  $IC_{50}$  values for inhibition were calculated by fitting the data to a sigmoid dose–response regression curve. Comparisons between the groups were done using two-tailed unpaired student t-tests and between more than two groups with one-way ANOVA. Statistical significance was defined as a P value  $< 0.05$ . Unless indicated otherwise, values are reported as mean  $\pm$  standard deviation.

**Data availability.** The datasets generated during and/or analysed during the current study are available from the corresponding author on reasonable request.

## References

- Pilz, S. *et al.* Homoarginine in the renal and cardiovascular systems. *Amino acids* **47**, 1703–1713, doi:10.1007/s00726-015-1993-2 (2015).
- März, W. *et al.* Homoarginine, cardiovascular risk, and mortality. *Circulation* **122**, 967–975, doi:10.1161/CIRCULATIONAHA.109.908988 (2010).
- Atzler, D. *et al.* Homoarginine predicts mortality in treatment-naive patients with pulmonary arterial hypertension. *Int J Cardiol* **217**, 12–15, doi:10.1016/j.ijcard.2016.04.161 (2016).
- Ravani, P. *et al.* Homoarginine and mortality in pre-dialysis chronic kidney disease (CKD) patients. *PLoS one* **8**, e72694, doi:10.1371/journal.pone.0072694 (2013).
- Atzler, D. *et al.* Homoarginine and cardiovascular outcome in the population-based Dallas Heart Study. *Arteriosclerosis, thrombosis, and vascular biology* **34**, 2501–2507, doi:10.1161/ATVBAHA.114.304398 (2014).
- Frenay, A. R. *et al.* High urinary homoarginine excretion is associated with low rates of all-cause mortality and graft failure in renal transplant recipients. *Amino acids* **47**, 1827–1836, doi:10.1007/s00726-015-2038-6 (2015).
- Vallance, P., Leone, A., Calver, A., Collier, J. & Moncada, S. Accumulation of an endogenous inhibitor of nitric oxide synthesis in chronic renal failure. *Lancet* **339**, 572–575 (1992).
- Choe, C. U. *et al.* Homoarginine levels are regulated by L-arginine:glycine amidinotransferase and affect stroke outcome: results from human and murine studies. *Circulation* **128**, 1451–1461, doi:10.1161/CIRCULATIONAHA.112.000580 (2013).
- Stoeckbrand, M. *et al.* Homoarginine supplementation improves blood glucose in diet-induced obese mice. *Amino acids* **47**, 1921–1929, doi:10.1007/s00726-015-2022-1 (2015).
- Atzler, D. *et al.* Dietary Supplementation with Homoarginine Preserves Cardiac Function in a Murine Model of Post-Myocardial Infarction Heart Failure. *Circulation* **135**, 400–402, doi:10.1161/CIRCULATIONAHA.116.025673 (2017).
- Hecker, M., Walsh, D. T. & Vane, J. R. On the substrate specificity of nitric oxide synthase. *FEBS Lett* **294**, 221–224 (1991).
- Moali, C., Boucher, J. L., Sari, M. A., Stuehr, D. J. & Mansuy, D. Substrate specificity of NO synthases: detailed comparison of L-arginine, homo-L-arginine, their N omega-hydroxy derivatives, and N omega-hydroxy-L-arginine. *Biochemistry* **37**, 10453–10460, doi:10.1021/bi980742t (1998).
- Hrabak, A., Bajor, T. & Temesi, A. Comparison of substrate and inhibitor specificity of arginase and nitric oxide (NO) synthase for arginine analogues and related compounds in murine and rat macrophages. *Biochem Biophys Res Commun* **198**, 206–212 (1994).
- Lin, C. W. & Fishman, W. H. L-Homoarginine. An organ-specific, uncompetitive inhibitor of human liver and bone alkaline phosphohydrolases. *J Biol Chem* **247**, 3082–3087 (1972).
- da Silva, C. G. *et al.* In vitro inhibition of Na<sup>+</sup>, K<sup>(+)</sup>-ATPase activity from rat cerebral cortex by guanidino compounds accumulating in hyperargininemia. *Brain Res* **838**, 78–84 (1999).
- Atzler, D. *et al.* Oral supplementation with L-homoarginine in young volunteers. *Br J Clin Pharmacol* **82**, 1477–1485, doi:10.1111/bcp.13068 (2016).
- Tsikas, D. & Wu, G. Homoarginine, arginine, and relatives: analysis, metabolism, transport, physiology, and pathology. *Amino acids* **47**, 1697–1702, doi:10.1007/s00726-015-2055-5 (2015).
- Rodionov, R. N. *et al.* A Novel Pathway for Metabolism of the Cardiovascular Risk Factor Homoarginine by alanine:glyoxylate aminotransferase 2. *Sci Rep* **6**, 35277, doi:10.1038/srep35277 (2016).
- Closs, E. I., Boissel, J. P., Haberman, A. & Rotmann, A. Structure and function of cationic amino acid transporters (CATs). *J Membr Biol* **213**, 67–77, doi:10.1007/s00232-006-0875-7 (2006).
- White, M. F., Gazzola, G. C. & Christensen, H. N. Cationic amino acid transport into cultured animal cells. I. Influx into cultured human fibroblasts. *J Biol Chem* **257**, 4443–4449 (1982).
- McDonald, K. K. *et al.* Inhibition of endothelial cell amino acid transport System  $\gamma^+$  by arginine analogs that inhibit nitric oxide synthase. *Biochim Biophys Acta* **1324**, 133–141 (1997).
- Kakoki, M. *et al.* Amino acids as modulators of endothelium-derived nitric oxide. *Am J Physiol Renal Physiol* **291**, F297–304, doi:10.1152/ajprenal.00417.2005 (2006).
- Strobel, J. *et al.* Interaction of the cardiovascular risk marker asymmetric dimethylarginine (ADMA) with the human cationic amino acid transporter 1 (CAT1). *J Mol Cell Cardiol* **53**, 392–400, doi:10.1016/j.yjmcc.2012.06.002 (2012).
- Strobel, J. *et al.* Transport of asymmetric dimethylarginine (ADMA) by cationic amino acid transporter 2 (CAT2), organic cation transporter 2 (OCT2) and multidrug and toxin extrusion protein 1 (MATE1). *Amino acids* **45**, 989–1002, doi:10.1007/s00726-013-1556-3 (2013).
- Bernstein, H. G. *et al.* Possible sources and functions of L-homoarginine in the brain: review of the literature and own findings. *Amino acids* **47**, 1729–1740, doi:10.1007/s00726-015-1960-y (2015).
- Bogle, R. G., Moncada, S., Pearson, J. D. & Mann, G. E. Identification of inhibitors of nitric oxide synthase that do not interact with the endothelial cell L-arginine transporter. *Br J Pharmacol* **105**, 768–770 (1992).
- Lüneburg, N. *et al.* Reference intervals for plasma L-arginine and the L-arginine:asymmetric dimethylarginine ratio in the Framingham Offspring Cohort. *J Nutr* **141**, 2186–2190, doi:10.3945/jn.111.148197 (2011).
- Rudolph, T. K. *et al.* Acute effects of various fast-food meals on vascular function and cardiovascular disease risk markers: the Hamburg Burger Trial. *Am J Clin Nutr* **86**, 334–340 (2007).
- Atzler, D. *et al.* Reference intervals of plasma homoarginine from the German Gutenberg Health Study. *Clin Chem Lab Med* **54**, 1231–1237, doi:10.1515/cclm-2015-0785 (2016).
- Khalil, A. A., Tsikas, D., Akolekar, R., Jordan, J. & Nicolaidis, K. H. Asymmetric dimethylarginine, arginine and homoarginine at 11–13 weeks’ gestation and preeclampsia: a case-control study. *J Hum Hypertens* **27**, 38–43, doi:10.1038/jhh.2011.109 (2013).

31. Kakoki, M., Kim, H. S., Arendshorst, W. J. & Mattson, D. L. L-Arginine uptake affects nitric oxide production and blood flow in the renal medulla. *Am J Physiol Regul Integr Comp Physiol* **287**, R1478–1485, doi:10.1152/ajpregu.00386.2004 (2004).
32. Hou, Y. *et al.* Whole-body synthesis of L-homoarginine in pigs and rats supplemented with L-arginine. *Amino acids* **48**, 993–1001, doi:10.1007/s00726-015-2145-4 (2016).
33. Ryan, W. L., Barak, A. J. & Johnson, R. J. Lysine, homocitrulline, and homoarginine metabolism by the isolated perfused rat liver. *Arch Biochem Biophys* **123**, 294–297 (1968).
34. Schulman, S. P. *et al.* L-arginine therapy in acute myocardial infarction: the Vascular Interaction With Age in Myocardial Infarction (VINTAGE MI) randomized clinical trial. *JAMA* **295**, 58–64, doi:10.1001/jama.295.1.58 (2006).
35. Böger, R. H. Letter to the editor re: JAMA article on L-arginine therapy in acute myocardial infarction. *Altern Med Rev* **11**, 91–92 (2006).
36. Porcelli, V., Fiermonte, G., Longo, A. & Palmieri, F. The human gene SLC25A29, of solute carrier family 25, encodes a mitochondrial transporter of basic amino acids. *J Biol Chem* **289**, 13374–13384, doi:10.1074/jbc.M114.547448 (2014).
37. Mariotti, F. *et al.* Meal amino acids with varied levels of arginine do not affect postprandial vascular endothelial function in healthy young men. *J Nutr* **137**, 1383–1389 (2007).
38. Schwedhelm, E. *et al.* Pharmacokinetic and pharmacodynamic properties of oral L-citrulline and L-arginine: impact on nitric oxide metabolism. *Br J Clin Pharmacol* **65**, 51–59, doi:10.1111/j.1365-2125.2007.02990.x (2008).
39. White, M. F. & Christensen, H. N. Cationic amino acid transport into cultured animal cells. II. Transport system barely perceptible in ordinary hepatocytes, but active in hepatoma cell lines. *J Biol Chem* **257**, 4450–4457 (1982).
40. Closs, E. I. *et al.* Impairment of the extrusion transporter for asymmetric dimethyl-L-arginine: a novel mechanism underlying vasospastic angina. *Biochem Biophys Res Commun* **423**, 218–223, doi:10.1016/j.bbrc.2012.05.044 (2012).
41. Kleber, M. E. *et al.* Genome-wide association study identifies 3 genomic loci significantly associated with serum levels of homoarginine: the AtheroRemo Consortium. *Circ Cardiovasc Genet* **6**, 505–513, doi:10.1161/CIRCGENETICS.113.000108 (2013).
42. Lüneburg, N. *et al.* Genome-wide association study of L-arginine and dimethylarginines reveals novel metabolic pathway for symmetric dimethylarginine. *Circ Cardiovasc Genet* **7**, 864–872, doi:10.1161/CIRCGENETICS.113.000264 (2014).

## Acknowledgements

This project was supported by an unrestricted research grant of the DOKTOR ROBERT PFLEGER-STIFTUNG to A.C. and R.M.

## Author Contributions

A.C. contributed to the research design, data acquisition, data analysis including statistical analysis, and drafting of the article. J.K. contributed to the research design, data analysis and drafting of the article. M.F.F. contributed to the research design, data analysis and revised the article for important content. R.M. contributed to the research design, data analysis including statistical analysis, and drafting of the article. All authors reviewed and approved the final version of the manuscript.

## Additional Information

**Competing Interests:** The authors declare that they have no competing interests.

**Publisher's note:** Springer Nature remains neutral with regard to jurisdictional claims in published maps and institutional affiliations.



**Open Access** This article is licensed under a Creative Commons Attribution 4.0 International License, which permits use, sharing, adaptation, distribution and reproduction in any medium or format, as long as you give appropriate credit to the original author(s) and the source, provide a link to the Creative Commons license, and indicate if changes were made. The images or other third party material in this article are included in the article's Creative Commons license, unless indicated otherwise in a credit line to the material. If material is not included in the article's Creative Commons license and your intended use is not permitted by statutory regulation or exceeds the permitted use, you will need to obtain permission directly from the copyright holder. To view a copy of this license, visit <http://creativecommons.org/licenses/by/4.0/>.

© The Author(s) 2017