



# HHS Public Access

Author manuscript

*J Parkinsons Dis.* Author manuscript; available in PMC 2017 October 19.

Published in final edited form as:

*J Parkinsons Dis.* 2016 October 19; 6(4): 761–770. doi:10.3233/JPD-160888.

## Multicenter Assessment of Immunohistochemical Methods for Pathological Alpha-Synuclein in Sigmoid Colon of Autopsied Parkinson's Disease and Control Subjects

Thomas G. Beach<sup>a</sup>, Anne-Gaëlle Corbillé<sup>b,c,d,e,f</sup>, Franck Letournel<sup>e,f</sup>, Jeffrey H. Kordower<sup>g</sup>, Thomas Kremer<sup>h</sup>, David G. Munoz<sup>i</sup>, Anthony Intorcchia<sup>a</sup>, Joseph Hentzi<sup>j</sup>, Charles H. Adler<sup>j</sup>, Lucia I. Sue<sup>a</sup>, Jessica Walker<sup>a</sup>, Geidy Serrano<sup>a</sup>, and Pascal Derkinderen<sup>b,c,d</sup>

<sup>a</sup>Banner Sun Health Research Institute, Sun City, AZ

<sup>b</sup>Inserm, U913, Nantes F-44035, France

<sup>c</sup>Nantes University, Nantes F-44035, France

<sup>d</sup>Department of Neurology, CHU Nantes, Nantes F-44093, France

<sup>e</sup>CHU Angers, Neurobiology and Neuropathology Laboratory, Angers F-49033, France

<sup>f</sup>Université of Angers, UPRES EA3143, Angers F-49033, France

<sup>g</sup>Center for Brain Repair, Department of Pathology, Rush Medical College, Chicago, IL, USA

<sup>h</sup>Roche Pharmaceutical Research and Early Development, Nord DTA, Biomarker and Clinical Imaging, Roche Innovation Center, F Hoffman-La Roche, Ltd., Basel

<sup>i</sup>Laboratory Medicine, St. Michael's Hospital, University of Toronto & Li Ka Shing Knowledge Institute, Toronto, ON, Canada

<sup>j</sup>Mayo Clinic Arizona, Scottsdale, Arizona

### Abstract

**BACKGROUND**—Conflicting results from studies of Lewy-type  $\alpha$ -synucleinopathy (LTS) in colonic biopsies of subjects with Parkinson's disease (PD) prompted a two-part multicenter assessment. The first assessment, now published (*Acta Neuropathol Commun* 4:35, 2016), examined archived colonic biopsies and found that none of the tested methods was adequately sensitive or specific.

**OBJECTIVE**—As the amount of nervous tissue in typical colonic biopsies may be insufficient, and the clinical diagnosis of PD not completely accurate, the objective of the current study was to use instead full-thickness sections of sigmoid colon from autopsy-proven PD and normal subjects.

**METHODS**—Seven different immunohistochemical (IHC) methods were used, employing five different primary antibodies and four different combinations of epitope exposure and signal

---

Corresponding Author: Thomas G Beach, MD, PhD, Banner Sun Health Research Institute, 10515 West Santa Fe Drive, Sun City, AZ UNITED STATES 85351.

#### Conflicts of Interest

The authors have no conflicts of interest to report.

development protocols. Specific staining was defined as being restricted to morphological features consistent with neuronal elements. Stained slides from each subject were independently categorized as being positive or negative for LTS, and their density semi-quantitatively graded, by four raters blinded to diagnosis.

**RESULTS**—Agreement and mean diagnostic performance varied markedly between raters. With the two most accurate raters, 5 methods achieved diagnostic accuracies of 70% or greater; one method had 100% accuracy and 100% inter-rater agreement. The submucosa had the highest prevalence of pathological LTS staining, followed by the muscularis and mucosa.

**CONCLUSIONS**—The major conclusion of this study is that, when sufficient submucosa and LTS is present, and when specific staining is defined as being consistent with neuronal morphology, adequately-trained raters may reliably distinguish PD colon from control using suitable IHC methods.

### Keywords

Lewy body; gastrointestinal tract; diagnosis; pathology; biopsy; enteric nervous system

---

### Introduction

By 2012, a series of observations by multiple groups [1–11] had indicated that Lewy-type  $\alpha$ -synucleinopathy (LTS) may be present in the colon of many subjects with prodromal and clinically-manifest Parkinson's disease (PD) and other Lewy body disorders (LBD), raising the potential for an endoscopically-obtained molecular diagnosis. However, a number of subsequently-published studies [12–26] have had conflicting results regarding the sensitivity and specificity of colonic biopsies for the detection of LTS. Under the sponsorship of the Michael J. Fox Foundation for Parkinson's Research (MJFF), two studies were directed at comparing the ability of several immunohistochemical (IHC) methods to accurately differentiate Parkinson's disease (PD) subjects from normal controls on the basis of colonic LTS.

The first study, now published [27], examined LTS in archived colonic biopsies. The conclusion of this study was that adequate diagnostic accuracy was not achieved by any of the staining methods or morphologically-defined staining types. Positive staining, in densities similar to those seen in PD cases, was seen in most of the slides from control cases, with most of the staining methods used, by most of the raters. Limitations of this prior study included the lack of neuropathological confirmation of the diagnosis of PD, the absence and/or relatively small amounts of submucosa in many of the slides and the probable scarcity of neuronal elements in the typically small colonic biopsy samples.

The objective of this second study, therefore, was to evaluate several IHC methods in large, full-thickness sigmoid colon sections from autopsied PD and control subjects. There were at least two reasons for using colon autopsy specimens in this second study, rather than biopsy specimens: 1) the unequivocal presence or absence of PD in each autopsied subject had been established through clinical evaluation and a full neuropathological examination, whereas subjects with archived biopsies are generally still alive or, if they have died, often have not

had neuropathological confirmation of PD. The diagnostic error rate of a clinical diagnosis of PD ranges from 15 to 50%, depending on disease duration [28] 2) autopsy specimens are much larger than biopsy specimens, and include abundant submucosa as well as the muscularis layer with their respective neuronal plexuses, so there will be a greater probability that the specimen will contain adequate densities of neuronal structures. The plexus within the muscularis layer has been reported to have, within the colon, the greatest density of LTS [3,5,10,11]. The biopsy study may have failed due to sparse or absent neuronal structures in the much smaller samples.

## Materials and Methods

Consecutive or near-consecutive sections of formalin-fixed paraffin-embedded (FFPE) autopsy-derived sigmoid colon, from 5 PD and 5 control subjects, were provided by the Banner Sun Health Research Institute Brain and Body Donation Program (BBDP; [www.brainandbodydonationprogram.org](http://www.brainandbodydonationprogram.org))[29]. The operations of the BBDP have been approved by the Western Institutional Review Board. Subjects (Table 1) were chosen on the basis of the absence of clinical or incidental colonic pathology as well as clinicopathological confirmation of PD and both clinical (absence of dementia or parkinsonism) and pathological control status (absence of LTS in the brain and/or previously-sampled peripheral nervous system). As the sigmoid colon had not previously been tested for the presence of LTS in most of these subjects, the PD subjects were chosen from amongst those with documented higher density scores in the submandibular gland and esophagus (two of the peripheral sites routinely tested for LTS by the BBDP), on the assumption that these subjects would also be likely to have higher LTS density scores in other peripheral nervous system locations. As the intent of the study was not to provide an unbiased estimate of LTS density in a representative sampling of PD subjects, but rather to test IHC methods, we hoped to instead select PD subjects with higher-than-average colonic LTS densities.

Alternating sets of 5 sections (e.g. Set 1 consisted of section number 1 plus every nth section thereafter; Set 2 consisted of section number 2 and every nth section thereafter, etc), as well as positive and negative control sections taken from autopsy-obtained cerebral cortex with and without LTS, were sent to four participating laboratories, who each stained one or more of the section sets with their own optimized method and/or an assigned method (Table 2). These were the same four labs that had participated in the prior colon biopsy study [27]. Seven different IHC methods were used (Table 2). Primary antibodies included one polyclonal and three different monoclonal antibodies against alpha-synuclein phosphorylated at serine 129 (Methods 1 – 6) and one monoclonal antibody against alpha-synuclein without post-translational modifications (Method 7). Five different combinations of epitope exposure pretreatments and signal development protocols were used.

After preliminary examination, three staining patterns were considered as candidates for specific LTS. All three of these were morphologically consistent with nerve fibers and/or puncta. Stained sections were graded blinded to diagnosis by the same four raters that performed this function for the prior biopsy study, using three custom templates devised after initial examination of the morphologies of presumptive specifically-stained structures (Fig. 1). Method 4 was graded by only three raters. The major template used to assign

density grades, as with the prior biopsy study [27], was termed “fibers and dots” (dots synonymous with puncta), and was applied to slides stained with all methods (Fig. 2). The second template (“fibers only”) was used only for slides stained with Method 7, due to the presence of frequent non-specific puncta. The third template, also previously-used [27], was termed “perivascular dots”, and was used only for slides stained with Method 3, as it was not present in slides stained with other methods. This template was used only for a particular morphological appearance of dots embedded in vascular walls. As for the prior biopsy study, semi-quantitative density scores (none, sparse, moderate and frequent) were assigned based on the highest density of stained structures at any single location and separately for mucosa, submucosa and muscularis (Fig. 2). The perivascular pattern of staining, being relatively infrequent, was graded without reference to layer. As non-specific, clearly artifactual staining (defined as being without meaningful morphological characteristics and/or found in slides from all subjects regardless of diagnosis) was present to some extent in slides produced with all methods, raters were instructed not to grade these types of staining. As non-specific staining of epithelial cells was particularly common (diffuse staining of cytoplasm and intraluminal fecal material; an example is shown in Fig. 1d), mucosal grading was limited to the lamina propria with adjacent muscularis mucosa. Another relatively common type of non-specific staining was a granular pattern in the lamina propria, as described in the prior colonic biopsy study [27]. Following blinded grading, the score sheets were sent to a statistician, for whom the blind was then lifted.

The primary analysis was for the ability of a subject-level positive or negative designation to predict diagnostic status (PD or control). Any LTS score greater than zero, in any slide, from any layer, was regarded as defining that subject as positive for LTS. The diagnostic performance was expressed as sensitivity, specificity, Youden Index and inter-rater agreement (intra-class correlation coefficient, ICC). The Youden Index, a measure of overall diagnostic accuracy, equals sensitivity + specificity, expressed as decimals, minus one. It has a zero value when a diagnostic test gives the same proportion of positive results for groups with and without the disease, i.e. when the test has no discriminatory value at all. A Youden Index of one indicates that there are no false positives or false negatives, i.e. when the test does not misclassify a single subject. Hereafter, to be concise, “diagnostic accuracy”, will refer to the relative performance of methods and raters as expressed by the Youden Index.

The density measures, along with prevalence of positive staining, were used in secondary analyses to compare the three colonic layers assessed.

The primary analysis aimed to first calculate diagnostic accuracy and inter-rater agreement with all colonic layers included, as it was considered likely that the muscularis layer, with its reportedly higher prevalence of LTS [3,5,10,11], would be critical for this, and then to repeat the calculations with the muscularis excluded, so as to model the biopsy setting, where the muscularis layer is never obtained.

The results from these initial analyses were used to compare the histological methods and raters in terms of their ability to predict a PD diagnosis. The most accurate method and raters were then used to compare LTS density in the three colonic layers.

Two-color immunolabelling was used to confirm the neuronal origin of the “fibers and dots” staining morphology (Fig. 3). The same monoclonal antibody against phosphorylated  $\alpha$ -synuclein utilized for the immunoperoxidase procedures in Methods 1 and 6 (P-syn/81aBiologend [31]) was used in series with a rabbit polyclonal antibody against phosphorylated and non-phosphorylated neurofilament (Abcam ab 7795, Cambridge, MA). Signal development utilized an alkaline-phosphatase-activated red chromogen (Impact Red, Vector Laboratories, Burlingame, CA), in combination with a peroxidase-coupled bluish-black chromogen (ABC, Vector Laboratories, Burlingame, CA; 3,3'-diaminobenzidine with saturated nickel ammonium sulfate and imidazole, Sigma, St. Louis, MO)[35].

## Results

The appearance of the staining with several different methods is depicted in Figures 1–3. Overall, in most subjects, tissue elements exhibiting even the most common “fibers and dots” staining pattern were present at low densities. Double-staining of selected sections with an antibody raised against a pan-neuronal marker (neurofilament protein) confirmed the impression gained from morphology alone that the “fiber and dot” morphology represents neuronal structures (Fig. 3i–p). Additionally, most of the presumptive specifically-stained structures were present in an anatomical context consistent with neuronal tissue, such as within nerve fascicles in the submucosa or within the intermyenteric plexus of the muscularis.

Inter-rater agreement and mean diagnostic performance were both poor to moderate when data from all colonic regions (lamina propria, submucosa and muscularis), templates and raters were included (Table 3). Only Methods 4, 5 and 6 achieved a mean Youden Index greater than 0.5 as well as ICC scores greater than 0.5. As diagnostic performance with the “perivascular dots” template, used only for Method 3, was uniformly poor with all raters, this pattern of staining was regarded as non-specific and scores using this template were not utilized in subsequent calculations. The diagnostic performance for Method 3 improved to an average Youden Index of 0.5 (from 0.0) after exclusion of results obtained with the perivascular template.

The next sets of analyses (Table 4) were performed after exclusion of results from the muscularis layer, to model the biopsy situation. Diagnostic accuracy was overall fairly similar to that obtained with inclusion of the muscularis layer (results not shown). Results again showed poor to moderate inter-rater agreement and diagnostic performance, with average ICC values ranging from –0.07 to 0.65 and average Youden indices varying from –0.05 to 0.75. Again, only Methods 4, 5 and 6 achieved both a mean Youden Index greater than 0.5 as well as ICC scores greater than 0.5.

In a third set of analyses (Table 5), only the results from the two raters with mean Youden Indices greater than 0.5 were used (Raters 1 and 4 from Table 4, with mean Youden Indices of 0.7 and 0.625, respectively). The mean diagnostic performance and inter-rater agreement were both moderate to very good for Methods 1–6. Method 5 achieved 100% accuracy with both raters. Method 6 was 80% accurate with both raters while three other methods all

achieved 70% accuracy, averaged across the two raters. In general, specificity was better than sensitivity; six methods had 100% specificity.

The results from Method 5 and the two most-accurate readers were then used to assess the prevalence, distribution and density of LTS within the three colon layers assessed (Table 6). Combining the scores from both raters, the submucosa had the highest prevalence of pathological LTS staining; 5/5 PD cases were positive for both raters in the submucosa versus 4/5 for the muscularis and 3/5 for the mucosa. The mean LTS density score within the mucosa was approximately 63% of that within the submucosa and muscularis, which were roughly equivalent.

## Discussion

This autopsy-based study, in contrast with the prior biopsy-based study by this same group [27], was successful in identifying several IHC methods with high accuracy for PD. The differing outcomes of the two studies were most likely due to several reasons, including: 1) the autopsy specimen was much larger and hence more likely to contain a much larger number of neuronal elements, which may have been absent or very sparse in the biopsy samples 2) the diagnosis of PD in each autopsied subject had been established through a full neuropathological examination, whereas the biopsied subjects had only a less-accurate, clinically-based diagnosis. 3) Positive or specific staining was defined as that with a morphology consistent with a neuronal origin and/or a presence in an anatomical context consistent with a neuronal origin. In the prior biopsy study, all staining morphologies were accepted as potentially specific.

Several methods used in this study had acceptable diagnostic accuracy. Method 5 was the most accurate, in terms of both ICC and Youden Index. However, with only 5 subjects in each group, the 95% confidence intervals for sensitivity and specificity generally were very wide, ranging between 48% and 100%. Therefore the rank order of the top several methods might not be preserved with much larger subject numbers.

Raters may have widely varying accuracy. It is recommended that raters should receive more formalized training prior to commencing slide judging, in order to more clearly distinguish between truly positive LTS and common artifactual (non-specific or false-positive) staining patterns. Although a detailed training program, in slide-show format, was circulated to all raters, it would be preferable to conduct a training program in a videoconference format or in-person under a multi-headed microscope.

Positive and negative control slides were used, but control sections stained with omission of the primary antibody were not used; this may have resulted in a somewhat higher false-positive rate. However, it is noted that, with the two most accurate raters, specificities with several methods were very high (6 methods had 100% specificity), indicating a low rate of false-positive decisions. Also, all the antibodies used in the study have been extensively characterized.

Although this autopsy study identified several methods with useful accuracy for identifying PD subjects, positively-and specifically-stained nerve fibers were scarce and widely

scattered in some subjects, raising concerns that randomly-acquired biopsies may often miss positive sites, resulting in a high false-negative rate with respect to a true PD diagnosis. Also, the amount of submucosa obtained in typical biopsies is often minimal. If colonic biopsies are to be used for studies of diagnostic accuracy, or to select subjects for clinical trials, multiple biopsy samples from each PD subject are therefore advisable to increase sensitivity. It is possible that future methods may have higher sensitivities.

Although prior studies had suggested that the muscularis layer had a considerably higher density and prevalence of LTS than the submucosa [3,5,10,11], in this study they were roughly equivalent. This is a critical finding as biopsies do not contain the muscularis layer and therefore, to be a potentially useful diagnostic site, the submucosa and/or mucosa must contain an acceptable pathology prevalence. However, this was a small sample size, so this issue would need further exploration with a much larger and more diverse case series.

Due to our deliberate design to ensure adequate LTS densities in the PD colonic tissue, rather than sampling subjects to be representative of the PD population as a whole, we selected subjects with a long clinical symptom duration, averaging more than 15 years, and who had previously-demonstrated higher peripheral nervous system (submandibular gland and esophagus) LTS scores. Also, by coincidence, all the PD subjects were males. As a result of this deliberately-biased sampling, the prevalences and densities of colonic LTS in this small subset of PD cases are likely to be higher than that expected for the general PD population.

## Acknowledgments

Funding Information: Michael J. Fox Foundation for Parkinson's Research (Grant ID: 9035.01); National Institute of Neurological Disorders and Stroke (U24 NS072026); National Institute on Aging ((P30 AG19610)

This study was supported by a grant from the Michael J. Fox Foundation for Parkinson's Research (Grant ID: 9035.01). The Banner Sun Health Research Institute Brain and Body Donation Program is supported by the National Institute of Neurological Disorders and Stroke (U24 NS072026 National Brain and Tissue Resource for Parkinson's Disease and Related Disorders), the National Institute on Aging (P30 AG19610 Arizona Alzheimer's Disease Core Center), the Arizona Department of Health Services (contract 211002, Arizona Alzheimer's Research Center), the Arizona Biomedical Research Commission (contracts 4001, 0011, 05-901 and 1001 to the Arizona Parkinson's Disease Consortium) and the Michael J. Fox Foundation for Parkinson's Research. AGC is a recipient of a "poste d'accueil Inserm".

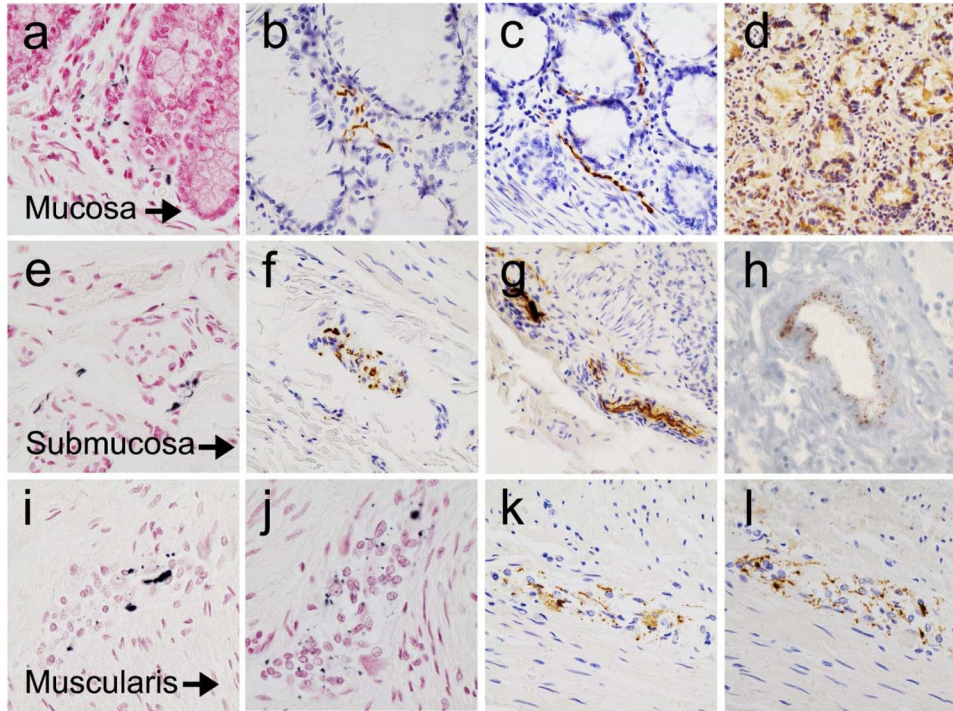
## References

1. Qualman SJ, Haupt HM, Yang P, Hamilton SR. Esophageal Lewy bodies associated with ganglion cell loss in achalasia. Similarity to Parkinson's disease. *Gastroenterology*. 1984; 87:848–56. [PubMed: 6088351]
2. Kupsky WJ, Grimes MM, Sweeting J, Bertsch R, Cote LJ. Parkinson's disease and megacolon: concentric hyaline inclusions (Lewy bodies) in enteric ganglion cells. *Neurology*. 1987; 37:1253–5. [PubMed: 3037441]
3. Wakabayashi K, Takahashi H, Takeda S, Ohama E, Ikuta F. Parkinson's disease: the presence of Lewy bodies in Auerbach's and Meissner's plexuses. *Acta Neuropathologica*. 1988; 76:217–219. [PubMed: 2850698]
3. Braak H, de Vos RA, Bohl J, Del Tredici K. Gastric alpha-synuclein immunoreactive inclusions in Meissner's and Auerbach's plexuses in cases staged for Parkinson's disease-related brain pathology. *Neurosci Lett*. 2006; 396:67–72. [PubMed: 16330147]

4. Lebouvier T, Chaumette T, Damier P, Coron E, Touchefeu Y, Vrignaud S, et al. Pathological lesions in colonic biopsies during Parkinson's disease. *Gut*. 2008; 57:1741–3. [PubMed: 19022934]
5. Beach TG, Adler CH, Sue LI, Vedders L, Lue L, White CL Iii, et al. Multi-organ distribution of phosphorylated alpha-synuclein histopathology in subjects with Lewy body disorders. *Acta Neuropathologica*. 2009; 119:689–702.
6. Lebouvier T, Coron E, Chaumette T, Paillusson S, Bruley des Varannes S, Neunlist M, et al. Routine colonic biopsies as a new tool to study the enteric nervous system in living patients. *Neurogastroenterol Motil*. 2010; 22:e11–4. [PubMed: 19650774]
7. Lebouvier T, Neunlist M, Bruley des Varannes S, Coron E, Drouard A, Nguyen JM, et al. Colonic biopsies to assess the neuropathology of Parkinson's disease and its relationship with symptoms. *PLoS One*. 2010; 5:e12728. [PubMed: 20856865]
8. Lebouvier T, Tasselli M, Paillusson S, Pouclet H, Neunlist M, Derkinderen P. Biopsable neural tissues: toward new biomarkers for Parkinson's disease? *Front Psychiatry*. 2010; 1:128. [PubMed: 21423439]
9. Shannon KM, Keshavarzian A, Mutlu E, Dodiya HB, Daian D, Jaglin JA, et al. Alpha-synuclein in colonic submucosa in early untreated Parkinson's disease. *Mov Disord*. 2012; 27:709–15. [PubMed: 21766334]
10. Pouclet H, Lebouvier T, Coron E, Varannes des SB, Neunlist M, Derkinderen P. A comparison between colonic submucosa and mucosa to detect Lewy pathology in Parkinson's disease. *Neurogastroenterol Motil*. 2012; 24:e202–5. [PubMed: 22292943]
11. Annerino DM, Arshad S, Taylor GM, Adler CH, Beach TG, Greene JG. Parkinson's disease is not associated with gastrointestinal myenteric ganglion neuron loss. *Acta Neuropathol*. 2012; 124:665–680. [PubMed: 22941241]
12. Hilton D, Stephens M, Kirk L, Edwards P, Potter R, Zajicek J, et al. Accumulation of  $\alpha$ -synuclein in the bowel of patients in the pre-clinical phase of Parkinson's disease. *Acta Neuropathologica*. 2013; 127:235–41. [PubMed: 24240814]
13. Gold A, Turkalp ZT, Munoz DG. Enteric alpha-synuclein expression is increased in Parkinson's disease but not Alzheimers disease. *Mov Disord*. 2013; 28:237–40. [PubMed: 23362176]
14. Gelpi E, Navarro-Otano J, Tolosa E, Gaig C, Compta Y, Rey MJ, et al. Multiple organ involvement by alpha-synuclein pathology in Lewy body disorders. *Mov Disord*. 2014; 29:1010–8. [PubMed: 24395122]
15. Masuda H, Asahina M, Oide T, Wakita H, Sekiguchi Y, Araki N, Kuwabara S. Antemortem detection of colonic  $\alpha$ -synuclein pathology in a patient with pure autonomic failure. *J Neurol*. 2014; 261:2451–2. [PubMed: 25319021]
16. Visanji NP, Marras C, Hazrati L-N, Liu LWC, Lang AE. Alimentary, my dear Watson? The challenges of enteric  $\alpha$ -synuclein as a Parkinson's disease biomarker. *Mov Disord*. 2014; 29:444–50. [PubMed: 24375496]
17. Schneider SA, Boettner M, Alexoudi A, Zorenkov D, Deuschl G, Wedel T. Can we use peripheral tissue biopsies to diagnose Parkinson's disease? A review of the literature. *Eur J Neurol*. 2015; 23:247–61. [PubMed: 26100920]
18. Visanji NP, Marras C, Kern DS, Dakheel Al A, Gao A, Liu LWC, et al. Colonic mucosal alpha-synuclein lacks specificity as a biomarker for Parkinson disease. *Neurology*. 2015; 84:609–16. [PubMed: 25589666]
19. Chung SJ, Kim J, Lee HJ, Ryu H-S, Kim K, Lee JH, et al. Alpha-synuclein in gastric and colonic mucosa in Parkinson's disease: Limited role as a biomarker. *Mov Disord*. 2015; 31:241–9. [PubMed: 26686342]
20. Woulfe JM, Gray MT, Munoz G. Colonic mucosal  $\alpha$ -synuclein lacks specificity as a biomarker for Parkinson disease. *Neurology*. 2015; 85:834.
21. Unger MM, Sakakibara R. Does REM sleep behavior disorder have the guts to be Parkinson disease? *Neurology*. 2015; 85:1732–3. [PubMed: 26475696]
22. Sprenger FS, Stefanova N, Gelpi E, et al. Enteric nervous system  $\alpha$ -synuclein immunoreactivity in idiopathic REM sleep behavior disorder. *Neurology*. 2015; 85:1761–8. [PubMed: 26475692]
23. Ruffmann C, Parkkinen L. Colonic mucosal  $\alpha$ -synuclein lacks specificity as a biomarker for Parkinson disease. *Neurology*. 2015; 85:834.

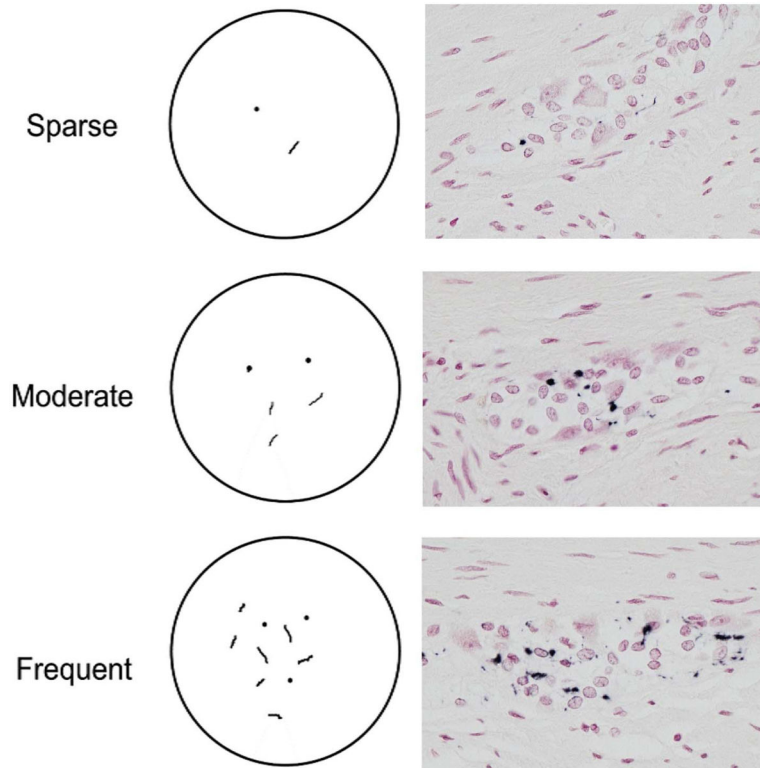


24. Cersosimo MG. Gastrointestinal biopsies for the diagnosis of alpha-synuclein pathology in Parkinson's disease (2015). *Gastroenterol Res Pract.* 2015;476041. [PubMed: 26078752]
25. Xuan Q, Zhang YX, Liu DG, Chan P, Xu SL, Cui YQ. Post-translational modifications of  $\alpha$ -synuclein contribute to neurodegeneration in the colon of elderly individuals. *Mol Med Rep.* 2016; 13:5077–83. [PubMed: 27109489]
26. Stokholm MG, Danielsen EH, Hamilton-Dutoit SJ, Borghammer P. Pathological alpha-synuclein in gastrointestinal tissues from prodromal parkinson's disease patients. *Ann Neurol.* 2016 Mar 26. [Epub ahead of print]. doi: 10.1002/ana.24648
27. Corbillé AG, Letournel F, Kordower JH, Lee J, Shanes E, Neunlist M, Munoz DG, Derkinderen P, Beach TG. Evaluation of alpha-synuclein immunohistochemical methods for the detection of Lewy-type synucleinopathy in gastrointestinal biopsies. *Acta Neuropathol Commun.* 2016; 4:35. [PubMed: 27044604]
28. Adler CH, Beach TG, Hentz JG, et al. Low clinical diagnostic accuracy of early vs advanced Parkinson disease: clinicopathologic study. *Neurology.* 2014; 83:406–12. [PubMed: 24975862]
29. Beach TG, Adler CH, Sue LI, et al. Arizona Study of Aging and Neurodegenerative Disorders and Brain and Body Donation Program. *Neuropathology.* 2015; 35:354–89. [PubMed: 25619230]
30. Beach TG, Adler CH, Lue L, et al. Unified staging system for Lewy body disorders: correlation with nigrostriatal degeneration, cognitive impairment and motor dysfunction. *Acta Neuropathol.* 2009; 117:613–34. [PubMed: 19399512]
31. Waxman EA, Giasson BI. Specificity and regulation of casein kinase-mediated phosphorylation of alpha-synuclein. *J Neuropathol Exp Neurol.* 2008; 67:402–416. [PubMed: 18451726]
32. Fujiwara H, Hasegawa M, Dohmae N, et al. Alpha-Synuclein is phosphorylated in synucleinopathy lesions. *Nat Cell Biol.* 2002; 4:160–4. [PubMed: 11813001]
33. Obi K, Akiyama H, Kondo H, et al. Relationship of phosphorylated alpha-synuclein and tau accumulation to Abeta deposition in the cerebral cortex of dementia with Lewy bodies. *Exp Neurol.* 2008; 210:409–420. [PubMed: 18164295]
34. Walker DG, Lue LF, Adler CH, et al. Changes in properties of serine 129 phosphorylated alpha-synuclein with progression of Lewy-type histopathology in human brains. *Exp Neurol.* 2013; 240:190–204. [PubMed: 23201181]
35. Beach TG, White CL, Hamilton RL, et al. Evaluation of alpha-synuclein immunohistochemical methods used by invited experts. *Acta Neuropathologica.* 2008; 116:277–88. [PubMed: 18626651]
36. Schell H, Hasegawa T, Neumann M, Kahle PJ. Nuclear and neuritic distribution of serine-129 phosphorylated alpha-synuclein in transgenic mice. *Neuroscience.* 2009; 160:796–804. [PubMed: 19272424]
37. Giasson BI, Uryu K, Trojanowski JQ, Lee VM. Mutant and wild type human alpha synucleins assemble into elongated filaments with distinct morphologies in vitro. *J Biol Chem.* 1999; 274:7619–22. [PubMed: 10075647]

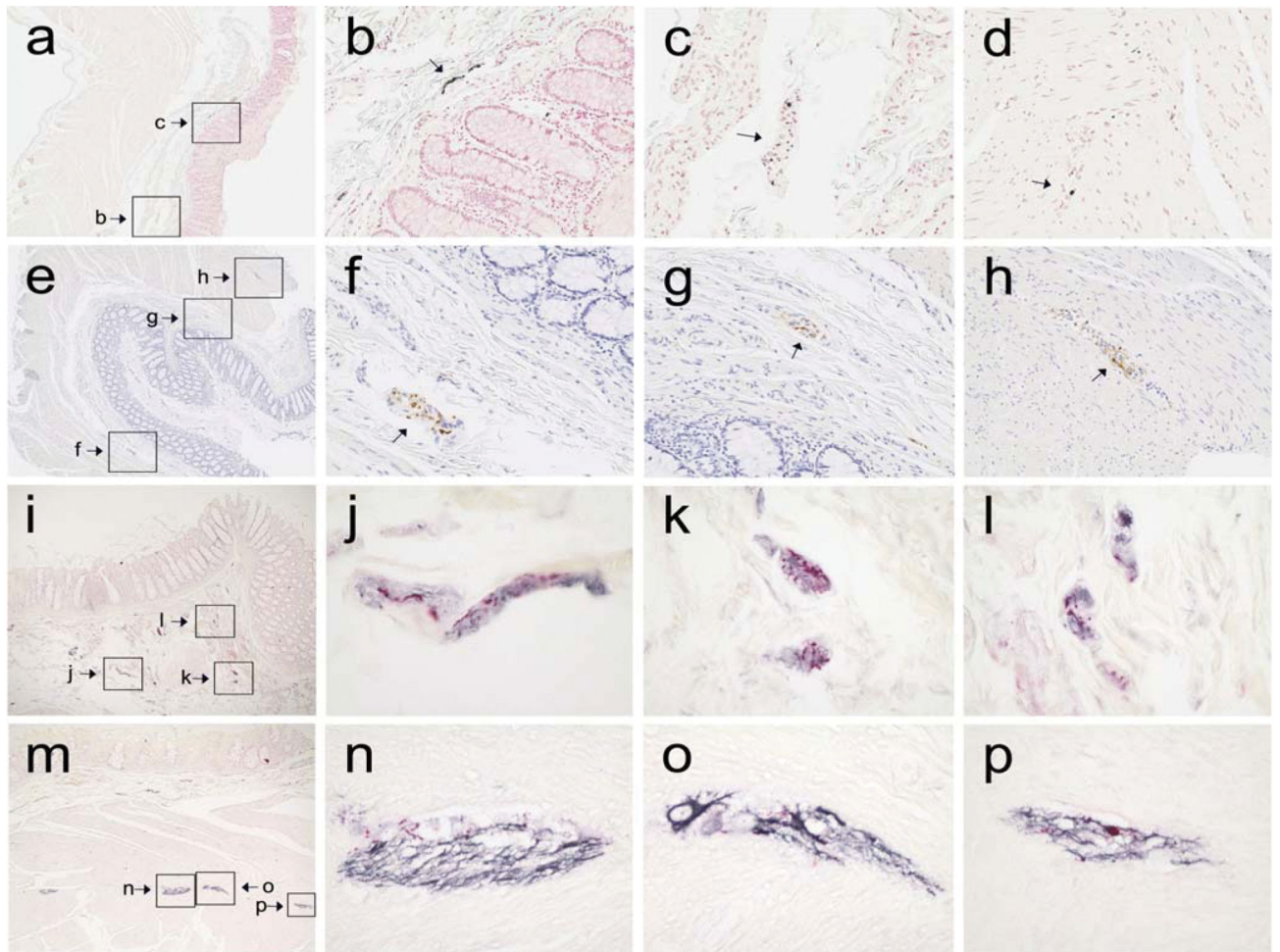


**Figure 1.**

Photomicrographs of the colon from autopsied PD subjects, stained immunohistochemically for phosphorylated  $\alpha$ -synuclein. Panels (a–c) show fibers and dots within the lamina propria, with Method 3 (a) and Method 5 (b and c). Panel (d) shows non-specific staining of epithelial cells with Method 5. Panels (e–g) show fibers and dots within the submucosa, with Method 5 (e) and Method 6 (f and g). Panel (h) shows dots embedded within the vascular wall (graded with the “perivascular dots” template) of a blood vessel in the submucosa, photomicrograph from prior study [27]. Panels (i–l) show fibers and dots within the myenteric plexus, with Method 2 (i and j), Method 5 (k) and Method 6 (l). Specific staining is black, with a red counterstain (panels a, e, i and j), or brown, with a blue counterstain (remainder of panels).



**Figure 2.** Diagrammatic template (left series of panels) used for density grading of “dots and fibers” type of morphology. On the right series of panels are photomicrographs of sections stained with Method 2, showing examples of each density grade within the myenteric plexus of PD subjects. Specific staining is black, with a red counterstain.



**Figure 3.**

Low-magnification photomicrographs (a, e) of the full thickness of the colonic wall from two PD subjects, stained immunohistochemically for phosphorylated  $\alpha$ -synuclein with Method 4 (a) and Method 5 (e); boxes show the location of higher magnification features of interest (small arrows in b, c, f, g and h), including a large fiber in the submucosa (b), probable nerve fascicles in the submucosa (c, f and g) and probable nerve fascicles in the intermyenteric plexus (d and h; d located just outside the area depicted in a). Low magnification photographs (i, m) of the colonic wall from a PD subject, double-stained for phosphorylated  $\alpha$ -synuclein and neurofilament protein; boxes show the location of higher magnification features of interest in the submucosa (i – l) and muscularis (m – p). Structures staining for phosphorylated  $\alpha$ -synuclein are red while those staining for neurofilament are black; the counterstain is light red.

**Table 1**

Characteristics of study subjects. PMI = postmortem interval in hours; clinical symptoms = symptom duration in years; UPDRS = last motor score prior to death on the Unified Parkinson’s Disease Rating Scale; Unified Lewy Stage = brain stage of LTS according to the Unified Staging System for Lewy Body Disorders [30]; Lewy CNS Load = mean summary score of LTS density in 10 standard brain regions; Lewy PNS Load = mean summary score of LTS density in lower esophagus and submandibular gland.

	Age Mean (SD)	Gender (M:F)	PMI Mean (SD)	Clinical Symptoms, Years Mean (SD)	UPDRS <sup>1</sup> Mean (SD)	Unified Lewy Stage Median	Lewy CNS Load Mean (SD)	Lewy PNS Load Mean (SD)
<b>PD (n=5)</b>	77.4 (6.9)	5:0	3.1 (0.9)	15.2 (8.0)	36.8 (16.9)	IV, Neocortical	30.6 (2.5)	5.5 (1.1)
<b>Control (n=5)</b>	81 (7.5)	5:0	3.3 (1.3)	NA	13.7 (10.1)	0, No Lewy Bodies	0 (0)	0 (0)

<sup>1</sup>Four PD cases were on medication while one was off; 2 control subjects did not have UPDRS score available.

**Table 2**

Immunohistochemical methods used by the four participating laboratories. p-synuclein =  $\alpha$ -synuclein phosphorylated at serine 129; a-synuclein =  $\alpha$ -synuclein unmodified form; ABC = avidin-biotin peroxidase complex; DAB = 3, 3' di-aminobenzidine.

	Primary antibody	Epitope exposure	Signal development
<b>Method 1</b>	p-synuclein, monoclonal P-syn/81 <sup>a</sup> Biolegend [31] 1:50,000	Ventana Protease 2 72° C, 8 minutes Citrate buffer, pH 6.4 90° C, 4 minutes	Ventana Benchmark Ultra, Optiview multimer and amplifier
<b>Method 2</b>	p-synuclein, polyclonal H. Akiyama, Tokyo [32–35] 1:10,000	Proteinase K 1:100 37° C, 20 minutes (5) [35]	ABC, DAB Vector Laboratories
<b>Method 3</b>	p-synuclein, monoclonal [EP1536Y] ab51253 Abcam [36] 1:5,000	As above.	As above.
<b>Method 4</b>	p-synuclein, monoclonal MJF-R13 (8-8) ab168381 Abcam 1: 5,000	As above.	As above.
<b>Method 5</b>	As above, 1:10,000	Proteinase K for 15 minutes (Bond Enzyme Pretreatment Kit)	DAB, BOND MAX Leica Biosystems, Newcastle, U.K.
<b>Method 6</b>	p-synuclein, monoclonal P-syn/81 <sup>a</sup> Biolegend [31] 1:5,000	As above.	As above.
<b>Method 7</b>	a-synuclein Monoclonal LB509 Invitrogen [37] 1:500	Formic acid 15 minutes Boiling citrate buffer 20 minutes [9]	ABC, DAB Vector Laboratories

**Table 3**

Intraclass Correlation Coefficient (ICC) and diagnostic performance for individual and grouped raters, using all scoring templates and three colonic layers.

Rater	ICC	Sensitivity	Specificity	Youden Index
<b>Method 1</b>				
Rater 1		80%	100%	0.80
Rater 2		80%	60%	0.40
Rater 3		20%	60%	- 0.20
Rater 4		80%	100%	0.80
All	0.17	65%	80%	0.45
<b>Method 2</b>				
Rater 1		80%	80%	0.60
Rater 2		80%	20%	0.00
Rater 3		40%	100%	0.40
Rater 4		80%	100%	0.80
All	0.28	70%	75%	0.45
<b>Method 3</b>				
Rater 1		80%	20%	0.00
Rater 2		80%	0%	- 0.20
Rater 3		20%	100%	0.20
Rater 4		100%	0%	0.00
All	0.02	70%	30%	0%
<b>Method 4</b>				
Rater 1		100%	100%	1.00
Rater 2		80%	80%	0.60
Rater 4		80%	100%	0.80
All	0.74	87%	93%	0.80
<b>Method 5</b>				
Rater 1		100%	100%	1.00
Rater 2		80%	100%	0.80
Rater 3		20%	100%	0.20
Rater 4		100%	100%	1.00
All	0.65	75%	100%	0.75
<b>Method 6</b>				
Rater 1		100%	100%	1.00
Rater 2		80%	80%	0.60
Rater 3		40%	100%	0.40
Rater 4		80%	100%	0.80
All	0.64	75%	95%	0.70
<b>Method 7</b>				

<b>Rater</b>	<b>ICC</b>	<b>Sensitivity</b>	<b>Specificity</b>	<b>Youden Index</b>
Rater 1		100%	0%	0.00
Rater 2		80%	40%	0.20
Rater 3		80%	0%	-0.20
Rater 4		100%	20%	0.20
All	-0.12	90%	15%	0.05

Author Manuscript

Author Manuscript

Author Manuscript

Author Manuscript



**Table 4**

Intraclass Correlation Coefficient (ICC) and diagnostic performance for individual and grouped raters, with exclusion of data from the muscularis layer and the perivascular template.

Rater	ICC	Sensitivity	Specificity	Youden Index
<b>Method 1</b>				
Rater 1		80%	100%	0.80
Rater 2		60%	80%	0.40
Rater 3		20%	80%	0.00
Rater 4		60%	100%	0.60
All	0.38	55%	90%	0.45
<b>Method 2</b>				
Rater 1		80%	100%	0.80
Rater 2		80%	40%	0.20
Rater 3		20%	100%	0.20
Rater 4		60%	100%	0.60
All	0.22	60%	85%	0.45
<b>Method 3</b>				
Rater 1		40%	100%	0.40
Rater 2		80%	40%	0.20
Rater 3		20%	100%	0.20
Rater 4		60%	100%	0.60
All	0.47	50%	85%	0.35
<b>Method 4</b>				
Rater 1		80%	100%	0.80
Rater 2		60%	100%	0.60
Rater 4		60%	100%	0.60
All	0.56	67%	100%	0.67
<b>Method 5</b>				
Rater 1		100%	100%	1.00
Rater 2		80%	100%	0.80
Rater 3		20%	100%	0.20
Rater 4		100%	100%	1.00
All	0.65	75%	100%	0.75
<b>Method 6</b>				
Rater 1		80%	100%	0.80
Rater 2		60%	80%	0.40
Rater 3		40%	100%	0.40
Rater 4		80%	100%	0.80
All	0.59	65%	95%	0.60
<b>Method 7</b>				

<b>Rater</b>	<b>ICC</b>	<b>Sensitivity</b>	<b>Specificity</b>	<b>Youden Index</b>
Rater 1		100%	20%	0.20
Rater 2		60%	40%	0.00
Rater 3		40%	0%	-0.60
Rater 4		100%	20%	0.20
All	-0.07	75%	20%	-0.05

Author Manuscript

Author Manuscript

Author Manuscript

Author Manuscript

**Table 5**

Inter-rater agreement (ICC), mean sensitivity, mean specificity and overall diagnostic performance (Youden Index) for the two most accurate raters' scores, after exclusion of results for the perivascular staining pattern and the muscularis layer.

Method	ICC	Sensitivity	Specificity	Youden Index
Method 1	0.8	70%	100%	0.70
Method 2	0.8	70%	100%	0.70
Method 3	0.76	50%	100%	0.50
Method 4	0.8	70%	100%	0.70
Method 5	1.0	100%	100%	1.00
Method 6	0.58	80%	100%	0.80
Method 7	-0.11	100%	20%	0.20

Author Manuscript

Author Manuscript

Author Manuscript

Author Manuscript

**Table 6**

Prevalence, distribution and densities of LTS within the five PD cases and the three colon layers assessed, using data from Method 5, showing individual results for the two most accurate raters as well as for their combined scores. Shown are the individual and combined rater prevalences (the percentage of PD cases found to have pathological staining) and mean density scores, with standard deviation in parentheses.

<b>Rater</b>	<b>Mucosa</b>	<b>Submucosa</b>	<b>Muscularis</b>	<b>All Layers</b>
<b>Rater 1</b>	40%; 0.61 (0.9)	100%; 1.26 (1.1)	60%; 0.84 (1.1)	100%; 0.87 (1.1)
<b>Rater 2</b>	80%; 0.92 (1.1)	100%; 1.16 (1.2)	100%; 1.56 (0.9)	100%; 1.24 (1.1)
<b>Both Raters</b>	60%; 0.76 (1.0)	100%; 1.21 (1.2)	80%; 1.2; (1.0)	100%; 1.05 (1.1)