



HHS Public Access

Author manuscript

Breast Cancer Res Treat. Author manuscript; available in PMC 2017 July 13.

Published in final edited form as:

Breast Cancer Res Treat. 2017 June ; 163(2): 391–398. doi:10.1007/s10549-017-4188-6.

Using ePrognosis to Estimate 2-year All-Cause Mortality in Older Women with Breast Cancer: Cancer and Leukemia Group B (CALGB) 49907 and 369901 (Alliance A151503)

Gretchen G Kimmick, MD MS¹, Brittny Major, MS², Jonathan Clapp, MS³, Jeff Sloan, PhD², Brandelyn Pitcher, MS^{1,4}, Karla Ballman, PhD⁵, Myra Barginear, MD⁶, Rachel A Freedman, MD⁷, Andrew Artz, MD⁸, Heidi D Klepin, MD⁹, Jacqueline M Lafky, MS², Judith Hopkins, MD¹⁰, Eric Winer, MD⁷, Clifford Hudis, MD¹¹, Hyman Muss, MD¹², Harvey Cohen, MD¹, Aminah Jatoi, MD¹³, Arti Hurria, MD^{*,14}, and Jeanne Mandelblatt, MD^{*,15}

¹Duke Cancer Institute, Duke University Medical Center, Durham, NC

²Alliance Statistics and Data Center, Mayo Clinic, Rochester, MN

³Department of Oncology, MedStar Georgetown University Medical Center, and Department of Biostatistics, Biomathematics, and Bioinformatics, Georgetown University, Washington, DC

⁴Alliance Statistics and Data Center, Duke University, Durham, NC

⁵Division of Biostatistics and Epidemiology, Weill Medical College of Cornell University, New York, NY

⁶Hofstra-North Shore LIJ School of Medicine, Northwell Health Cancer Institute, Lake Success, NY

⁷Dana-Farber/Partners CancerCare, Boston, MA

⁸University of Chicago Comprehensive Cancer Center, Chicago, IL

⁹Wake Forest University School of Medicine, Winston-Salem, NC

¹⁰Forsyth Regional Cancer Center, Winston-Salem, NC

¹¹American Society of Clinical Oncology, Alexandria, VA

¹²UNC Lineberger Cancer Center, University of North Carolina at Chapel Hill, Chapel Hill, NC

¹³Mayo Clinic, Rochester, MN

¹⁴City of Hope, Duarte, CA

¹⁵Department of Oncology and Cancer Prevention and Control Program, Lombardi Comprehensive Cancer Center, MedStar Georgetown University Medical Center, Georgetown University, Washington DC

Correspondence: Gretchen Kimmick, Box 3204 DUMC, Durham, NC 29910, gretchen.kimmick@duke.edu, Phone: 919-668-0718.

*Drs. Hurria and Mandelblatt contributed equally and serve as co-senior authors

Conflicts of Interest:

None of the authors has potential conflicts of interest or specific financial interests relevant to the subject of their manuscript.

Abstract

Purpose—Tools to estimate survival, such as ePrognosis (<http://eprognosis.ucsf.edu/carey2.php>), were developed for general, not cancer, populations. In older patients with breast cancer, accurate overall survival estimates would facilitate discussions about adjuvant therapies.

Methods—Secondary analyses were performed of data from two parallel breast cancer studies (CALGB/Alliance 49907/NCT000224102 and CALGB/Alliance 369901/NCT00068328). We included patients (n=971) who were age 70 years and older with complete baseline quality of life data (194 from 49907; 777 from 369901). Estimated versus observed all-cause two-year mortality rates were compared. ePrognosis score was calculated based on age, sex, and daily function (derived from EORTC QLQ-C30). ePrognosis scores range from 0 to 10, with higher scores indicating worse prognosis based on mortality of community-dwelling elders, and were categorized into three groups (0–2, 3–6, 7–10). Observed mortality rates were estimated using Kaplan-Meier methods.

Results—Patient mean age was 75.8 years (range 70–91) and 73% had stage I-IIA disease. Most patients were classified by ePrognosis as good prognosis (n=562, 58% 0–2) and few (n=18, 2% 7–10) poor prognosis. Two-year observed mortality rates were significantly lower than ePrognosis estimates for patients scoring 0–2 (2% vs 5%, p=0.001) and 3–6 (8% vs 12%, p=0.01). The same trend was seen with scores of 7–10 (23% vs 36%, p=0.25).

Conclusions—ePrognosis tool only modestly overestimates mortality rate in older breast cancer patients enrolled in two cooperative group studies. This tool, which estimates non-cancer mortality risk based on readily available clinical information, may inform adjuvant therapy decisions, but should be validated in non-clinical trial populations.

Keywords

Breast cancer; survival estimates; ePrognosis; elderly

INTRODUCTION

Cancer systemic adjuvant therapy prevents future distant recurrences and improves long-term survival.[1] In older patients, the balance of benefits and risks of cancer treatment is complicated by competing causes of mortality, presence of frailty, and advanced age. These factors are associated with increase treatment toxicity and limited overall and cancer-specific survival and, therefore, hinder discussions about preventive therapies and participation in clinical trials.[2,3] Data on life expectancy could support treatment decision-making.

Several extant tools are available to estimate life expectancy in older individuals and they are compiled for clinical use in ePrognosis (<http://eprognosis.ucsf.edu/>).[4] The ePrognosis tools were designed for older adults without severe illnesses, such as cancer, and are validated in community-dwelling, nursing-home, or hospitalized older individuals. None of these indices is validated in patients with non-metastatic cancer, who might be considering potentially curative adjuvant therapies.

We conducted a secondary analysis of data from two cancer cooperative group studies to compare short-term (two-year) ePrognosis estimated versus observed all-cause mortality rates among older women with non-metastatic breast cancer. Studies included were (1) a phase III, randomized study of adjuvant chemotherapy for breast cancer in women age 65 years and older (CALGB 49907/NCT000224102)[5] and (2) a parallel observational study with the same eligibility criteria (CALGB 369901/NCT00068328)[6]. CALGB is now a part of the Alliance for Clinical Trials in Oncology. By design, the two studies included a common core of sociodemographic and quality of life data.[7]

METHODS

This study was deemed exempt by the Duke University Hospital System Institutional Review Board.

Patients with early-stage breast cancer participating in CALGB/Alliance 49907 and 369901, who were age 70 years and older and had completed baseline quality of life questionnaires, were included in the analysis (Figure 1). Age 70 years was chosen to parallel ePrognosis. We selected two-year all-cause mortality because short-term limits in life expectancy would have a large influence on systemic therapy decisions, particularly among women with estrogen-receptor negative. Cause of death was grouped as breast cancer-related and other, which included unknown cause.

Estimations of Prognosis

The two-year ePrognosis tool[8] was developed from the Asset and Health Dynamics Among the Oldest Old (AHEAD) study of 4516 community dwelling adults, age 70 years and older, and provides mortality estimates based on answers to six function questions. We matched data items collected from the European Organization for Research and Treatment of Cancer Quality of Life Questionnaire (EORTC-QLQ-C30) at baseline to the ePrognosis tool.

The ePrognosis tool assigns a score to each item, for a summary score ranging from 1–10, with zero indicating the best prognosis. We applied the scoring system to the study data as follows:

1. “How old is your patient?” Age was available in both studies and was scored as 0 if age 70–75, 1 if age 76–80, and 2 if age >80.
2. “What is your patient’s sex?” All patients were female and were score as 0.
3. “Does your patient need help from another person to bathe?” Defined from the question “do you need help with eating, dressing, washing yourself, or using the toilet?” on the EORTC QLQ-C30. Scored as 0 if answered “not at all”, otherwise 1 point.
4. “Does your patient need help from another person to shop for groceries?” Defined from the EORTC QLQ-C30: During the past week, were you limited in doing either your work or other daily activities? Scored as 0 if answered “not at all”, otherwise 2 points.

5. “Does your patient have difficulty walking several blocks?” Defined from the EORTC QLQ-C30: Do you have any trouble taking a long walk? Scored as 0 if answered “not at all”, otherwise 2 points.
6. “Does your patient have difficulty pushing or pulling a heavy object, such as an arm chair?” Defined from the EORTC QLQ-C30: Have you felt weak? Scored as 0 if answered “not at all”, otherwise 1 point.

Statistical Analysis

Observed all-cause mortality rates (and 95% confidence intervals) were calculated for both samples combined and each protocol separately from study entry to death using Kaplan-Meier methods.[9,10] All-cause mortality rates were also calculated for each stratum of the ePrognosis score categories (0–2 points, 3–6 points, and 7–10 points). Observations were censored at the date last known alive. The two-year survival Index scores from ePrognosis were used to generate an estimated survival rate for each score category. A two-sided z-test was used to compare the observed versus estimated mortality rates. Data collection and statistical analyses were conducted by the Alliance Statistical and Data Center. All analyses were conducted using SAS Version 9.4 (SAS Institute, Cary, NC, USA) on a dataset locked on May 15, 2015.

RESULTS

Participant mean age was 76 years with range of 70–91 years. Patient characteristics, overall and by study, are presented in Table 1. Of those that died within 2 years, 55% died from causes related to breast cancer. Most women were in the good prognosis category (n=562, 58%) and 18 (2%) in the poor prognosis category.

Predicted and observed mortality estimates by ePrognosis are shown in Table 2 and Appendix Figure 1. Two-year observed mortality was significantly lower than estimated from ePrognosis for patients scoring 0–2 (2% vs 5%, p=0.001) and 3–6 (8% vs 12%, p=0.01) points. Although not significant, the same trend was seen for the small number with scores of 7–10 (23% vs 36%, p=0.25).

The results are similar within each study (Appendix Table 1 and Figures 2 and 3).

DISCUSSION

Older women with non-metastatic breast cancer participating in cooperative group studies have very low two-year all-cause mortality rates. The ePrognosis tool systematically, but only slightly, over-estimated mortality. This may have implications for practice, since the tool may be used by clinicians when discussing systemic treatment options that have short-term toxicity but long-term benefits in preventing recurrence.[1]

These results are consistent with studies of linked SEER-Medicare datasets showing that women age 65 years and older with early-stage breast cancer have higher non-breast cancer survival than matched women without breast cancer.[11,12] Higher socio-economic status, healthier behaviors, better healthcare access, and more routine doctor visits to treat

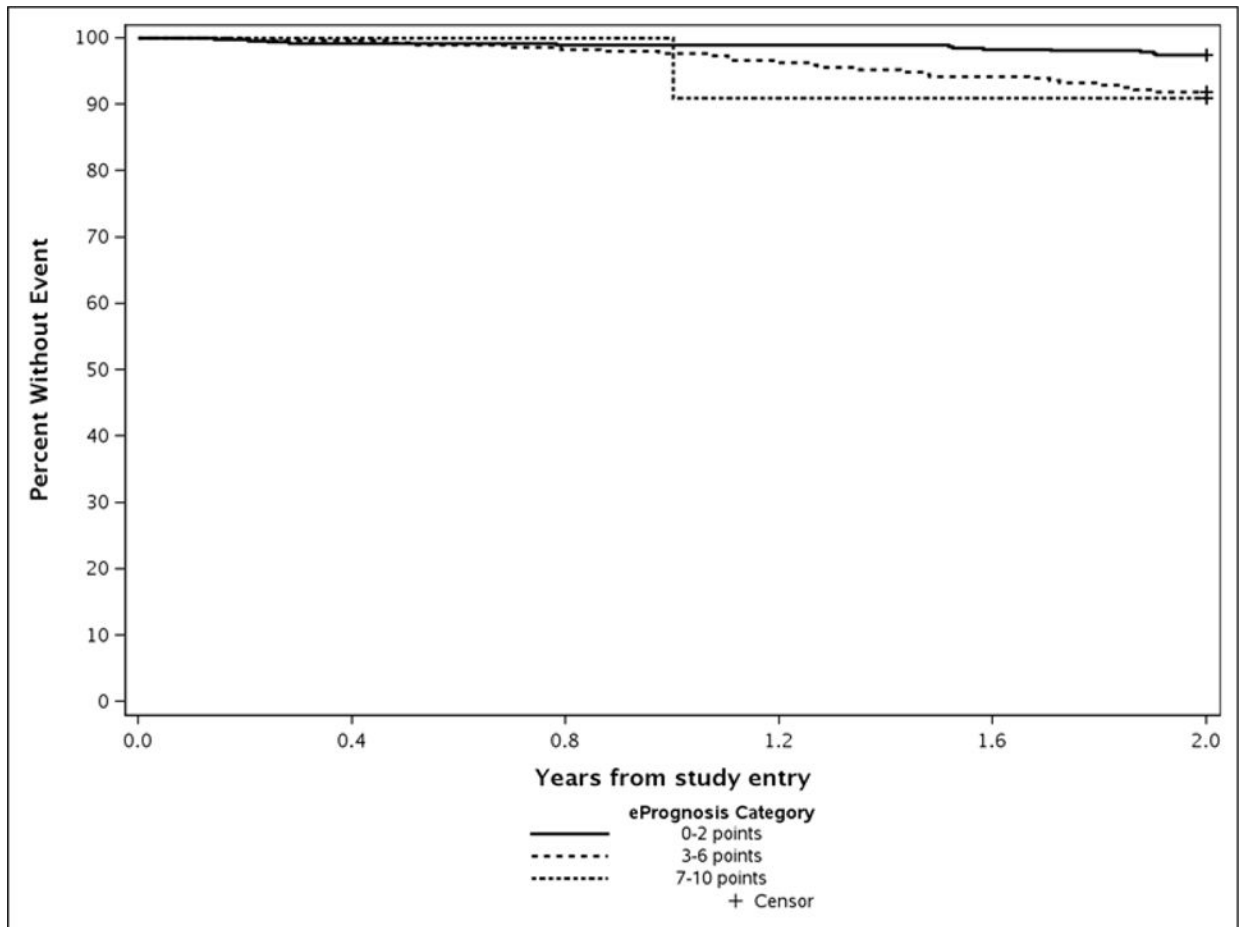
coexisting illness are thought to explain the better non-breast cancer survival seen in older breast cancer patients.[11,13,14] Use of older datasets to derive ePrognosis estimates and lower mortality over time due to improvements in management of acute toxicities and comorbidities may also explain why ePrognosis provided an overestimate.[15] Interestingly, other online prognostic tools, such as Adjuvant! Online and PREDICT, slightly overestimate 10-year survival.[16,17]

This study is limited by the secondary nature of the analysis, some non-correspondence between items on the tool and those available from EORTC, and use of cooperative group data. These results will need to be confirmed in broader, older breast cancer populations and community settings. However, the prospective design of the original studies, high quality of data collection, and inclusion of many community hospitals and observational data enhances the generalizability of the finding.

Despite these caveats, the results were robust across data sets and prognostic groups and suggest that tools developed in general populations provide a slight overestimate of mortality in older breast cancer patients, which may not be clinically significant. Even so, development and testing of more accurate tools to estimate mortality in older breast cancer patients could enhance shared decision-making about the risks and benefits of adjuvant therapies.

Acknowledgments

Support: Research reported in this publication was supported by the National Cancer Institute of the National Institutes of Health under the Award Number UG1CA189823 (Alliance for Clinical Trials in Oncology NCORP Grant), U10CA003927, U10CA007968, U10CA032291, U10CA035279, U10CA041287, U10CA047559, U10CA047577, U10CA077597, U10CA180790, U10CA180836, U10CA180838, U10CA180857, and U10CA180867. The research was also supported by National Cancer Institute at the National Institutes of Health grants U10CA084131 and R01CA127617 to JSM. The research was also supported, in part, by National Cancer Institute at the National Institutes of Health grant R35CA197289, R01CA129769, R01CA124924, and K05CA096940 to JSM. Alliance protocol 369901 was further supported, in part, by the National Cancer Institute at the National Institutes of Health legacy grants #U10CA031946 to the Cancer and Leukemia Group B (now Alliance for Clinical Trials in Oncology) and #U10CA033601 to the CALGB Statistical Center (now Alliance Statistics and Data Center). Earlier portions of the Alliance 369901 trial were also funded in part by a grant to support patient accrual from Amgen Pharmaceuticals to the CALGB Foundation. The content of this manuscript is solely the responsibility of the authors and does not necessarily represent the official views of the National Cancer Institute at the National Institutes of Health.



Appendix Figure 3.
Observed 2-year Survival among CALGB/Alliance 369901 Patients by ePrognosis Category

Appendix Table 1

Predicted vs. Observed 2-year All-Cause Mortality Rates in a Sample of Non-Metastatic Breast Cancer Patients Ages 70 years and Older by Study

ePrognosis Prediction		49907 Patients				369901 Patients			
Points	Predicted Probability of Survival	N	Number of Deaths	Observed Probability of Overall Survival at 2 years (%; 95% CI)	p-value	N	Number of Deaths	Observed Probability of Overall Survival at 2 years (%; 95% CI)	p-value
0-2	5%	92	0	0%	0.03	470	12	3% (1-4%)	0.047
3-6	12%	95	9	10% (5-18%)	0.55	296	24	8% (6-12%)	0.03
7-10	36%	7	3	43% (26-83%)	0.70	11	1	9% (1-49%)	0.06

References

1. Muss HB. Adjuvant chemotherapy in older women with breast cancer: who and what? *J Clin Oncol.* 2014; 32(19):1996-2000. DOI: 10.1200/JCO.2013.54.8586 [PubMed: 24868030]

2. Hurria A. Management of elderly patients with cancer. *J Natl Compr Canc Netw*. 2013; 11(5 Suppl): 698–701. [PubMed: 23704247]
3. Kimmick G. Clinical trial accrual in older cancer patients: The most important steps are the first ones. *J Geriatr Oncol*. 2016; 7(3):158–161. DOI: 10.1016/j.jgo.2016.03.006 [PubMed: 27091511]
4. Yourman LC, Lee SJ, Schonberg MA, Widera EW, Smith AK. Prognostic indices for older adults: a systematic review. *JAMA*. 2012; 307(2):182–192. doi:307/2/182 [pii] 10.1001/jama.2011.1966. [PubMed: 22235089]
5. Muss HB, Berry DA, Cirincione CT, Theodoulou M, Mauer AM, Kornblith AB, Partridge AH, Dressler LG, Cohen HJ, Becker HP, Kartcheske PA, Wheeler JD, Perez EA, Wolff AC, Gralow JR, Burstein HJ, Mahmood AA, Magrinat G, Parker BA, Hart RD, Grenier D, Norton L, Hudis CA, Winer EP. Adjuvant chemotherapy in older women with early-stage breast cancer. *N Engl J Med*. 2009; 360(20):2055–2065. doi:360/20/2055 [pii] 10.1056/NEJMoa0810266. [PubMed: 19439741]
6. Mandelblatt JS, Faul LA, Luta G, Makgoeng SB, Isaacs C, Taylor K, Sheppard VB, Tallarico M, Barry WT, Cohen HJ. Patient and physician decision styles and breast cancer chemotherapy use in older women: Cancer and Leukemia Group B protocol 369901. *J Clin Oncol*. 2012; 30(21):2609–2614. DOI: 10.1200/JCO.2011.40.2909 [PubMed: 22614985]
7. Mandelblatt JS, Makgoeng SB, Luta G, Hurria A, Kimmick G, Isaacs C, Tallarico M, Barry WT, Pitcher B, Winer EP, Hudis C, Cohen HJ, Muss HB. A planned, prospective comparison of short-term quality of life outcomes among older patients with breast cancer treated with standard chemotherapy in a randomized clinical trial vs. an observational study: CALGB #49907 and #369901. *J Geriatr Oncol*. 2013; 4(4):353–361. DOI: 10.1016/j.jgo.2013.05.004 [PubMed: 24472479]
8. Carey EC, Walter LC, Lindquist K, Covinsky KE. Development and validation of a functional morbidity index to predict mortality in community-dwelling elders. *J Gen Intern Med*. 2004; 19(10): 1027–1033. doi:JGI40016 [pii] 10.1111/j.1525-1497.2004.40016.x. [PubMed: 15482555]
9. Therneau, TM., Grambsch, PM. *Modeling survival data: extending the Cox model*. Springer-Verlag; New York: 2000.
10. Sprinthal, RC. *Basic Statistical Analysis*. 9th. Pearson Education; Old Tappan, NJ: 2011.
11. Schonberg MA, Marcantonio ER, Ngo L, Li D, Silliman RA, McCarthy EP. Causes of death and relative survival of older women after a breast cancer diagnosis. *J Clin Oncol*. 2011; 29(12):1570–1577. doi:JCO.2010.33.0472 [pii] 10.1200/JCO.2010.33.0472. [PubMed: 21402602]
12. Cho H, Mariotto AB, Mann BS, Klabunde CN, Feuer EJ. Assessing NonCancer-Related Health Status of US Cancer Patients: Other-Cause Survival and Comorbidity Prevalence. *American Journal of Epidemiology*. 2013; 178(3):339–349. DOI: 10.1093/aje/kws580 [PubMed: 23825168]
13. Anderson RT, Yang TC, Matthews SA, Camacho F, Kern T, Mackley HB, Kimmick G, Louis C, Lengerich E, Yao N. Breast cancer screening, area deprivation, and later-stage breast cancer in Appalachia: does geography matter? *Health Serv Res*. 2014; 49(2):546–567. DOI: 10.1111/1475-6773.12108 [PubMed: 24117371]
14. Halpern MT, Ward EM, Pavluck AL, Schrag NM, Bian J, Chen AY. Association of insurance status and ethnicity with cancer stage at diagnosis for 12 cancer sites: a retrospective analysis. *Lancet Oncol*. 2008; 9(3):222–231. DOI: 10.1016/S1470-2045(08)70032-9 [PubMed: 18282806]
15. Mariotto AB, Wesley MN, Cronin KA, Johnson KA, Feuer EJ. Estimates of long-term survival for newly diagnosed cancer patients - A projection approach. *Cancer*. 2006; 106(9):2039–2050. DOI: 10.1002/cncr.21803 [PubMed: 16572414]
16. de Glas NA, van de Water W, Engelhardt EG, Bastiaannet E, de Craen AJ, Kroep JR, Putter H, Stiggelbout AM, Weijl NI, van de Velde CJ, Portielje JE, Liefers GJ. Validity of Adjuvant! Online program in older patients with breast cancer: a population-based study. *Lancet Oncol*. 2014; 15(7): 722–729. DOI: 10.1016/S1470-2045(14)70200-1 [PubMed: 24836274]
17. de Glas NA, Bastiaannet E, Engels CC, de Craen AJ, Putter H, van de Velde CJ, Hurria A, Liefers GJ, Portielje JE. Validity of the online PREDICT tool in older patients with breast cancer: a population-based study. *Br J Cancer*. 2016; 114(4):395–400. DOI: 10.1038/bjc.2015.466 [PubMed: 26783995]

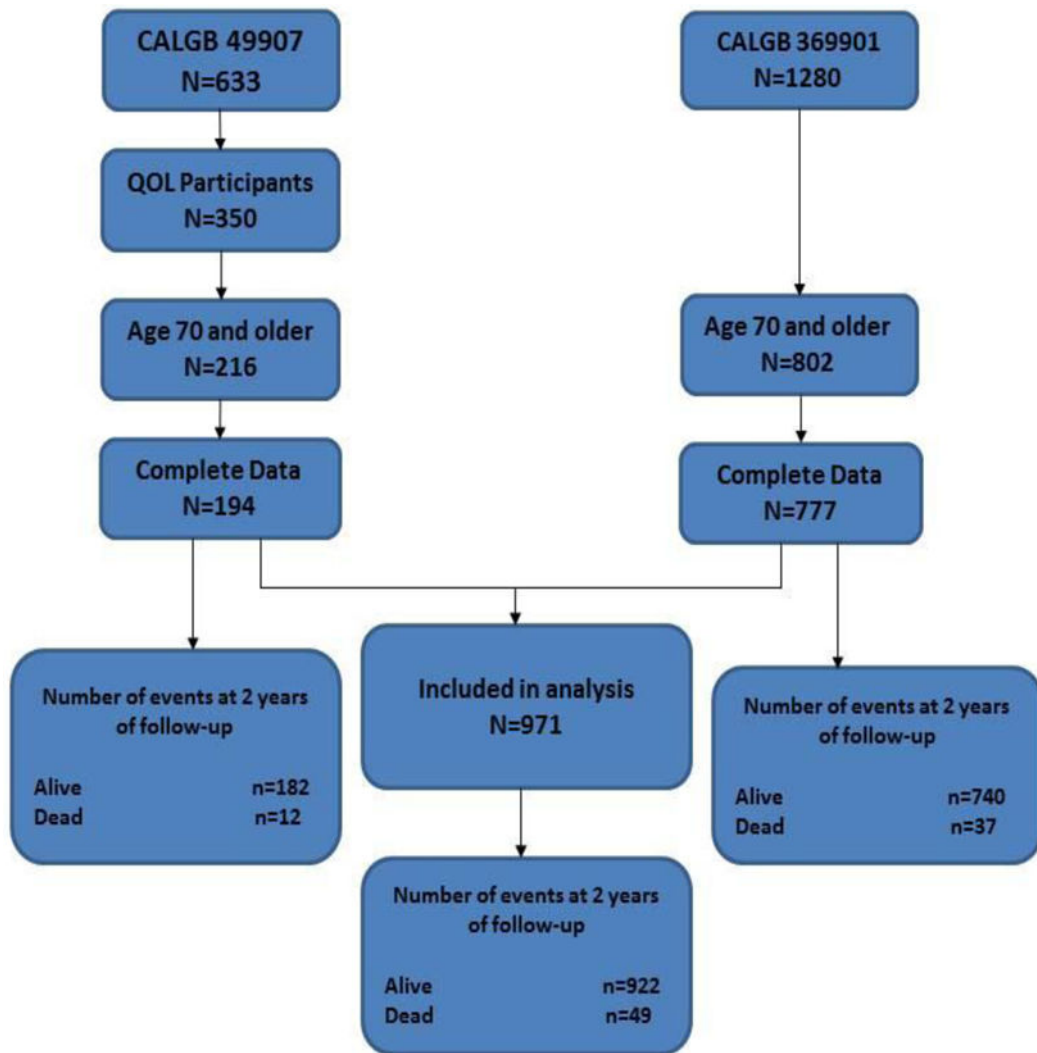


Figure 1.
Sample derivation and number of events.

Table 1

Characteristics of Non-Metastatic Breast Cancer Patients ages 70+ Enrolled in Two CALGB/Alliance Protocols

Characteristic	Total (N=971)	49907 (N=194)	369901 (N=777)	p-value
Years of enrollment		2001–2006	2004–2011	
Median follow-up (years) range	6.67 (0, 12.6)	8.17 (0, 12.61)	6.59 (0.14, 10.75)	
Age , (years) mean (SD) range	75.8 (4.6) (70, 91)	74.6 (3.7) (70, 89)	76.1 (4.7) (70, 91)	0.0002 0.001
70–75	535 (55.1%)	124 (63.9%)	411 (52.9%)	
76–80	287 (29.6%)	57 (29.4%)	230 (29.6%)	
>80	149 (15.3%)	13 (6.7%)	136 (17.5%)	
ECOG Performance status		131 (67.5%)	<i>Not Available</i>	
0		59 (30.4%)		
1		4 (2.1%)		
2				
Missing				
Race or ethnic group	863 (88.9%)	166 (85.6%)	697 (89.7%)	0.30
White	88 (9.1%)	23 (11.9%)	65 (8.4%)	
Black or African American	15 (1.5%)	3 (1.5%)	12 (1.5%)	
Other	5 (<1%)	2(1.0%)	3 (0.4%)	
Unknown				
Ethnicity	18 (1.8%)	4 (2.0%)	14 (1.8%)	0.74
Hispanic or Latino	936 (96.4%)	178 (91.8%)	758 (97.4%)	
Non-Hispanic	18 (1.8%)	12 (6.2%)	6 (<1%)	
Unknown/Not reported				
Tumor size	560 (57.7%)	76 (39.2%)	484 (62.3%)	<0.0001
2 cm	365 (37.6%)	107 (55.2%)	258 (33.2%)	
> 2 to 5 cm	43 (4.4%)	10 (5.2%)	33 (4.2%)	
> 5 cm	3 (<1%)	1 (< 1%)	2 (<1%)	
Missing				
No. of positive lymph nodes	308 (31.7%)	51 (26.3%)	257 (33.1%)	<0.0001
0	218 (22.5%)	104 (53.6%)	114 (14.7%)	
1–3	89 (9.2%)	31 (16.0%)	58 (7.5%)	
4–9	52 (5.3%)	7 (3.6%)	45 (5.8%)	
10	304 (31.3%)	1 (< 1%)	303 (39.0%)	
Missing				
ER Positive status	210 (21.6%)	80 (41.2%)	130 (16.7%)	<0.0001
Negative	760 (78.3%)	114 (58.8%)	646 (83.1%)	
Positive	1 (<1%)	0	1 (<1%)	
Missing				
HER2 status		155 (79.9%)	<i>Not available</i>	
Negative		29 (14.9%)		
Positive		10 (5.2%)		
Unknown				
Type of surgery	589 (60.7%)	80 (41.2%)	509 (65.5%)	<0.0001
Partial mastectomy/lumpectomy/excisional bx	381 (39.2%)	113 (58.2%)	268 (34.4%)	
Mastectomy/NOS	2(<1%)	1 (< 1%)	1 (<1%)	
Missing				
Axillary evaluation	311 (32.0%)	0	311 (40.0%)	<0.0001
Sentinel-node biopsy only	208 (21.4%)	71 (36.6%)	137 (17.6%)	
Axillary dissection only	387 (40.0%)	87 (44.8%)	300 (38.6%)	
Sentinel-node biopsy and axillary dissection	64 (6.6%)	35 (18.0%)	29 (3.7%)	
Neither sentinel-node nor axillary dissection	1 (<1%)	1 <1%)	0	
Missing				
Adjuvant chemotherapy	442 (45.5%)	194 (100%)	248 (31.9%)	
Chemotherapy	492 (50.7%)	0	492 (63.3%)	
No Chemotherapy	37 (3.8%)	0	37 (4.8%)	
Not reported/Unknown				

Characteristic	Total (N=971)	49907 (N=194)	369901 (N=777)	p-value
AJCC Stage	380 (40.2%)	18 (10.7%)	362 (46.6%)	<0.0001
Stage I	308 (32.6%)	67 (39.6%)	241 (31.1%)	
Stage IIA	159 (16.8%)	68 (40.2%)	91 (11.7%)	
Stage IIB	67 (7.1%)	14 (8.3%)	53 (6.8%)	
Stage IIIA	6 (0.6%)	0 (0.0%)	6 (0.8%)	
Stage IIIB	25 (2.6%)	2 (1.2%)	23 (3.0%)	
Stage IIIC	26 (2.7%)	25 (12.9%)	1 (<1%)	
Missing				
Cause of Death	27 (55.1%)	7 (58.3%)	20 (54.1%)	0.796
Breast Cancer-related Cause	22 (44.9%)	5 (41.7%)	17 (45.9%)	
Other Cause				

Author Manuscript

Author Manuscript

Author Manuscript

Author Manuscript

Table 2 Predicted vs. Observed 2-year Mortality Rates in a Sample of Non-Metastatic Breast Cancer Patients ages 70 and Older

ePrognosis Prediction		49907 and 369901 Patients			
Points	Predicted Probability of Mortality	N	Number of Deaths	Observed Probability of Overall Mortality at 2 years (%; 95% CI)	p-value
0-2	5%	562	12	2% (1-4%)	0.001
3-6	12%	391	33	8% (6-12%)	0.01
7-10	36%	18	4	23% (9-49%)	0.25